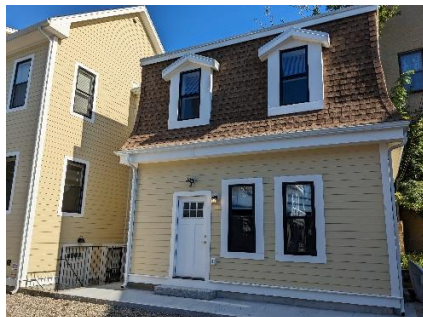




Mayor Katjana Ballantyne and LaCourt Orphanage Trust, LLC are pleased to announce **one (1) income-restricted rental apartment** available through the City of Somerville Inclusionary Housing Program at:

29 Chandler St., Somerville



Features: granite countertops, hardwood floors, on-site coin-op laundry, shared outdoor patio

Address + Unit Number	Tier	Bedrooms	Monthly Rent	Utilities Included	Approx. Area (SF)
29 Chandler St #3	Tier R3 81%-110% AMI	2	\$2,549.00	Water/Sewer	956

Annual Gross Income Limits	2 people	3 people	4 people	5 people
Tier R3: 81%-110% AMI	\$94,801 - \$130,592	\$106,651 - \$146,916	\$118,451 - \$163,240	\$127,951 - \$176,299.20
Asset Limit (excluding restricted accounts): \$75,000				

* Min. income requirements are waived for households with rental subsidies through mobile housing vouchers such as Section 8, MRVP, VASH etc.

APPLICATIONS AVAILABLE: Tues. Oct. 10 – Thurs. Nov. 9, 2023

Online at: somervillema.gov/inclusionaryhousing

Request hard applications and more information at: (617) 625-6600 X 2566 or

inclusionary@somervillema.gov

APPLICATION DEADLINE: Thurs. Nov. 9, 2023 at 2:00 PM

Faxed to: 617-591-3235; Emailed to: inclusionary@somervillema.gov

Mailed/Dropped off to: City Hall Annex: 50 Evergreen Ave., Somerville, MA 02145;

LOTTERY: Thurs. Nov. 16, 2023 @ 10AM | View the lottery here: <https://us02web.zoom.us/j/82584687325>

VIRTUAL OFFICE HOURS: Thurs. @ 5:30-7:30 PM

Online: <https://us02web.zoom.us/j/81106664399> / Meeting ID: 811 0666 4399 / Call in: +1 305-224-1968

FOR MORE INFORMATION, CONTACT: INCLUSIONARY@SOMERVILLEMA.GOV / 617-625-6600 ext. 2566

Visit: somervillema.gov/inclusionaryhousing



Individuals with disabilities who need auxiliary aids and services for effective communication, written materials in alternative formats, or reasonable modifications in policies and procedures, in order to access the programs and activities of the City of Somerville or to attend meetings, should contact the ADA Coordinator, Adrienne Pomeroy, at 617-625-6600 x2259 or apomeroy@somervillema.gov.

