



Revolution Drive Parking Changes

Traffic Commission 7/7/26



Revolution Drive between Grand Union Blvd and Assembly Row

Current parking regulations

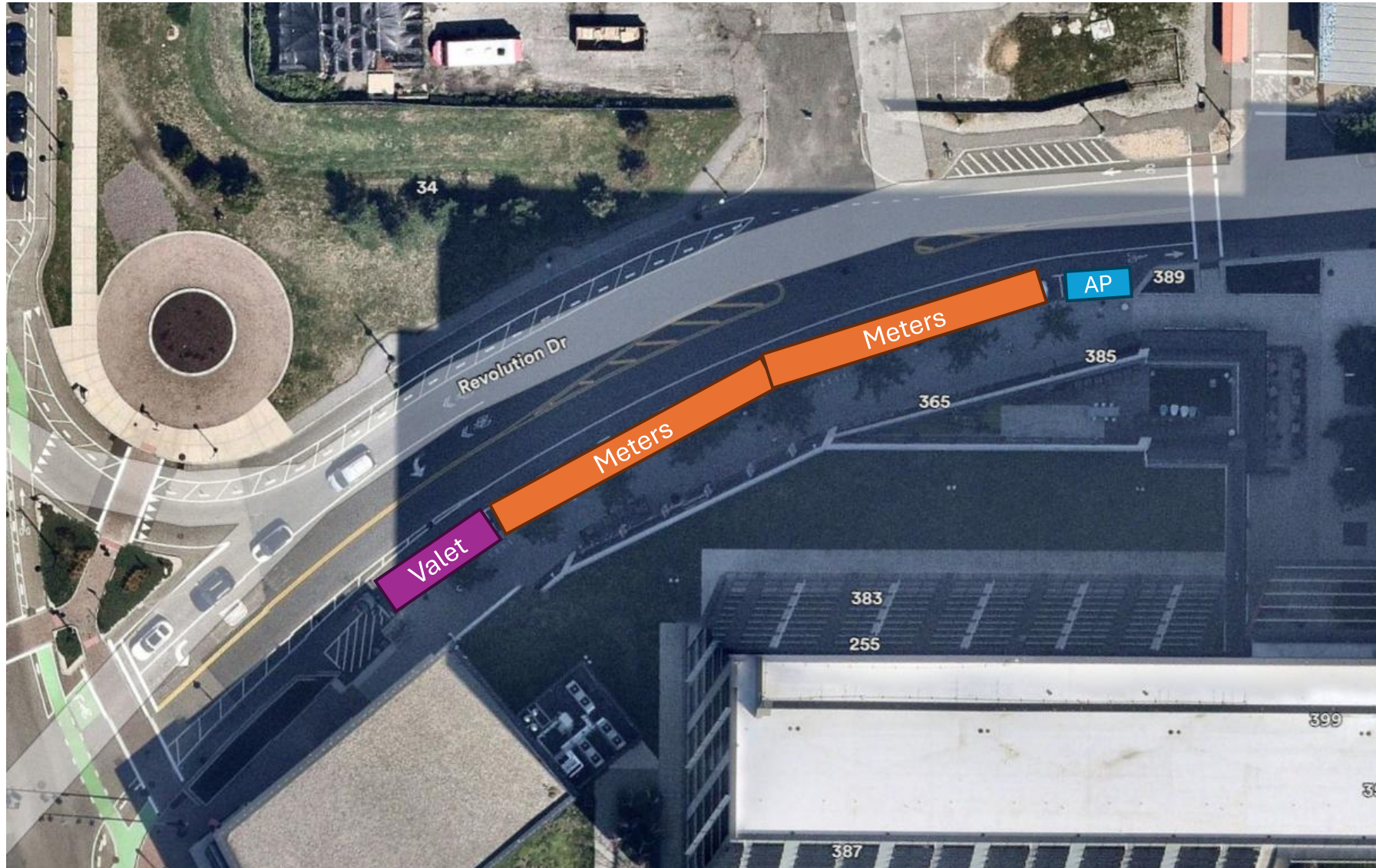
MGB Valet (2)



Meters (9)



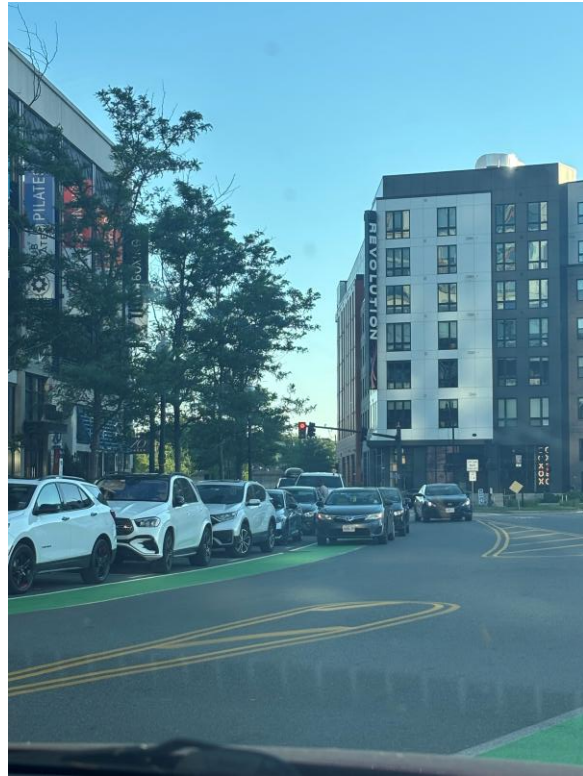
Accessible
Parking (1)



Lack of short-term parking options leads to frequent double parking in the bike and vehicle travel lanes

Businesses:

- Lucky Strike
- MGB Imaging
- Squeeze Massage
- Zo Greek
- Jersey Mike's – requested a loading zone for customer pick ups
- Fitness Studios
- Parrelli Optical
- Ruth's Chris



6/9 @ 7:01pm



6/9 @ 7:07pm



6/15 @ 6:18pm

Revolution Drive between Assembly Row and Great River Road

Current parking regulations

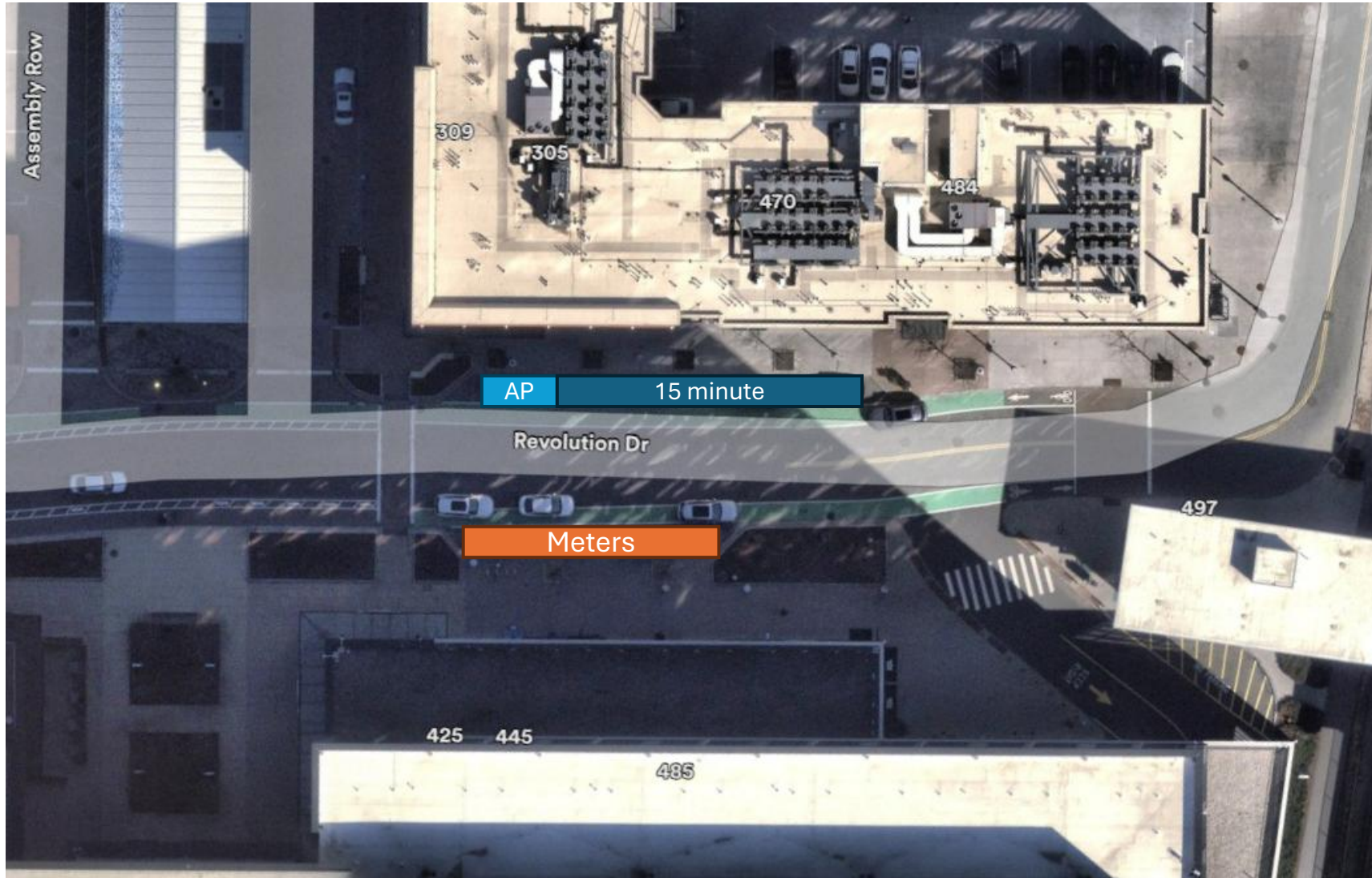
Meters (3)



Accessible
Parking (1)



Pick up/drop off only,
15 minute limit (4)



Lack of short-term parking options leads to frequent double parking in the bike and vehicle travel lanes

Businesses:

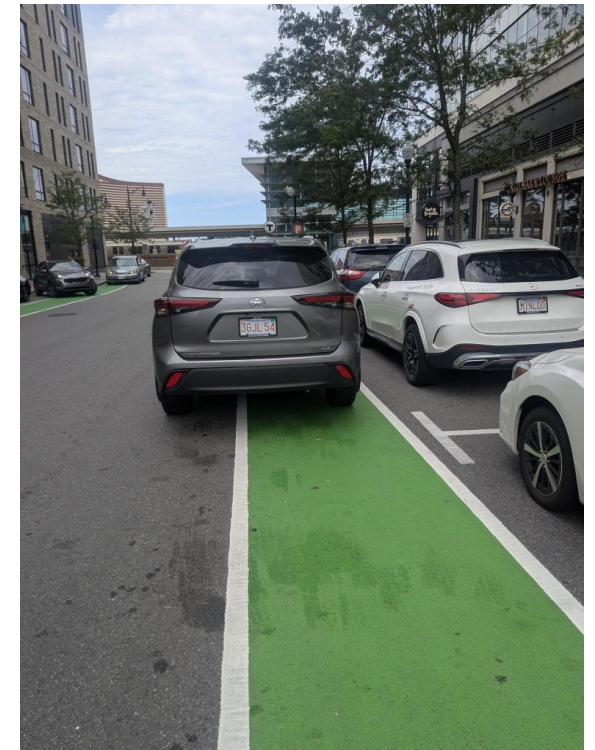
- Capital One Café
- Mike's Pastry
- Sabroso Taqueria
- Nail Bar
- Pop Up Bagels
- Tatte Café
- Good Time Golf



6/9 @ 5:18pm



6/9 @ 7:02pm



6/14 @ 1:42pm

Revolution Drive between Grand Union Blvd and Assembly Row

Proposed parking regulations

MGB Valet (2)



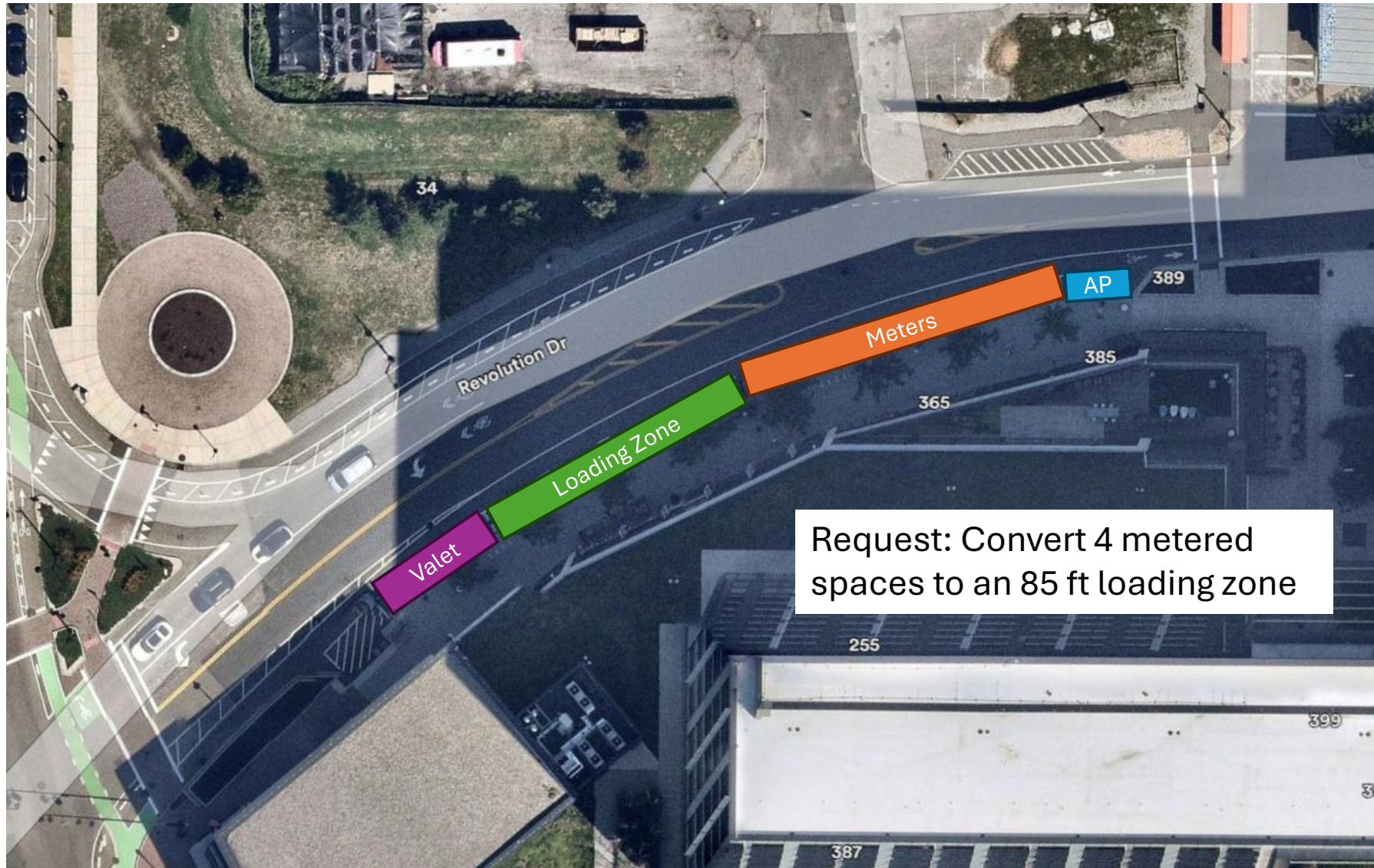
Loading Zone (85 ft)



Meters (5)

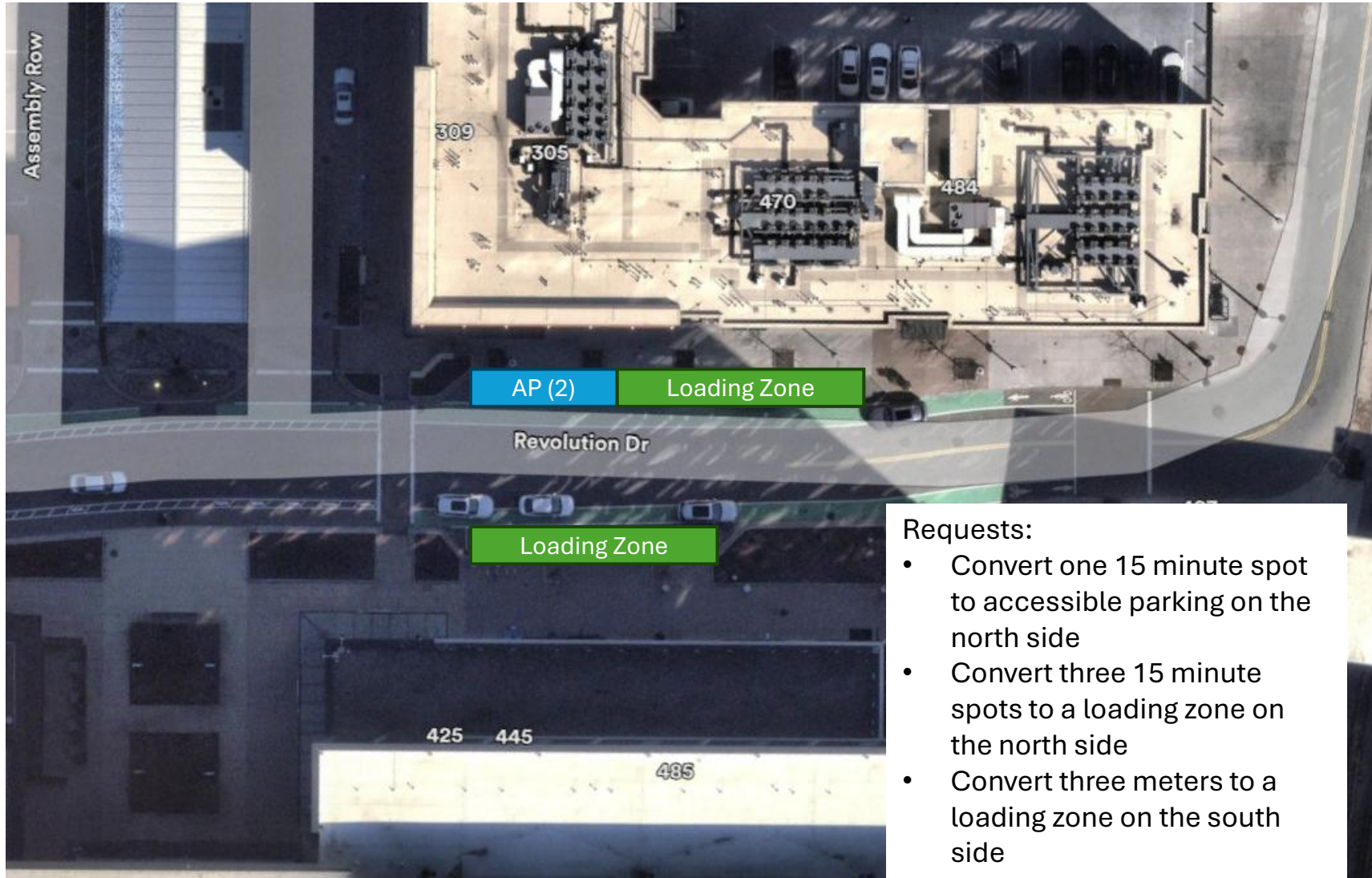


Accessible Parking (1)



Revolution Drive between Assembly Row and Great River Road

Proposed parking regulations



Accessible
Parking (2)



Loading Zone,
north side (65 ft)



Loading Zone,
south side (65 ft)



- Requests:
- Convert one 15 minute spot to accessible parking on the north side
 - Convert three 15 minute spots to a loading zone on the north side
 - Convert three meters to a loading zone on the south side

Assembly Row Parking Options

- The City regulates approximately 290 on-street parking spaces in Assembly Row
 - 73% are metered spaces
 - 12% are short-term parking (including loading zones)
 - 9% are restricted-use (Valet, Police, Fire, Courthouse)
 - 6% are accessible parking spaces
- Assembly Row also offers six parking garages and one surface lot that total over 6,000 parking spaces
 - Approximately 2,300 spaces are available to the general public
 - Free parking for the first three hours

Parking Option Nearby: MGB Garage



- These parking regulation changes will free up curbside parking for quick pick up/drop off/loading activities
- Adjacent ~2,000 space parking garage – 660 spaces available to the public
- Parking is *free* for the first 3 hours
- The parking garage can accommodate visitors looking to stay for longer durations

Summary of proposed changes

Revolution Dr between Grand Union Blvd and Assembly Row

Parking Regulation	Existing Regulations	Proposed Regulations
Metered	9	5
MGB Valet	2	2
Accessible	1	1
Loading	0	4

Revolution Dr between Assembly Row and Great River Rd

Parking Regulation	Existing Regulations	Proposed Regulations
Metered	3	0
15 minute	4	0
Accessible	1	2
Loading	0	6

Regulation Requests

- Item # 5 – Request to change parking regulations on Revolution Drive, as detailed within.
 - a) Regarding the curb on the south side of Revolution Dr, from approximately 165 ft east of Grand Union Blvd to approximately 250 ft east of Grand Union Blvd (355 Revolution Dr), request to convert four metered parking spaces to an 85 ft loading zone.
 - b) Regarding the curb on the south side of Revolution Dr, from approximately 40 ft east of Assembly Row to approximately 105 ft east of Assembly Row (445-485 Revolution Dr), request to convert three metered parking spaces to a 65 ft loading zone.
 - c) Regarding the curb on the north side of Revolution Dr, from approximately 60 ft east of Assembly Row to approximately 80 ft east of Assembly Row (470 Revolution Dr), request to convert one 15 minute parking space to an accessible parking space.
 - d) Regarding the curb on the north side of Revolution Dr, from approximately 80 ft east of Assembly Row to approximately 150 ft east of Assembly Row (470 Revolution Dr), request to convert 15 minute parking spaces to a 70 ft loading zone.