

Central Hill Parking Zone Pilot



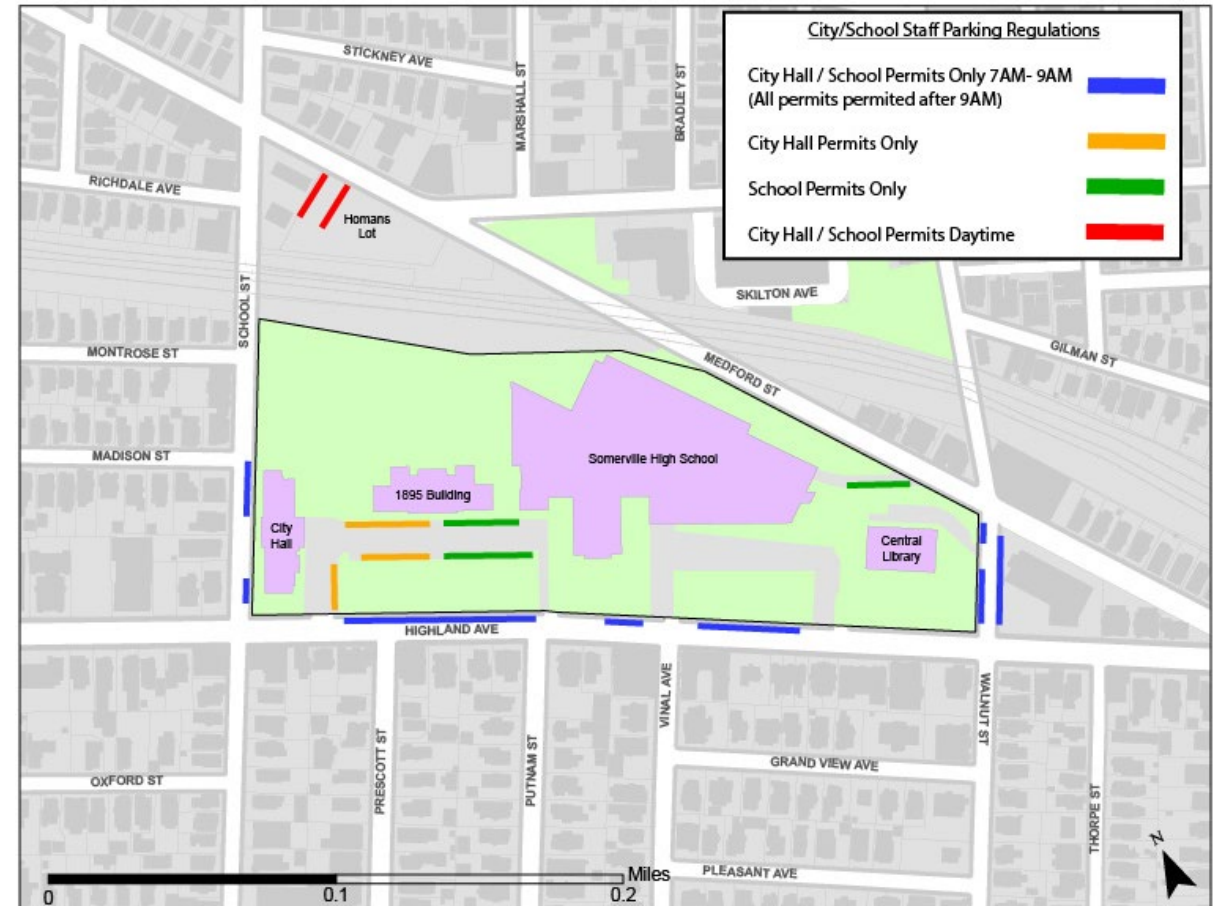
TRAFFIC COMMISSION 6/2/2026

Background & Pilot Regulations

With construction of the new Somerville High School and Central Hill campus, a majority of the on-site surface parking on the campus was replaced with public open space and recreation space.

“City Hall or School Permit” Parking Only

- 7am-9am only on school days
- Highland Ave (north side)
- School St (east side)
- Walnut St (both sides)



Pilot Objectives

Respond to concerns that curb management around Central Hill had become unpredictable and unpleasant for all users – residents, workforce, visitors.

Determine whether parking conflicts could be reduced by providing time-limited, priority parking on arterial streets for municipal / school workforce.

Collect data on changing curb use patterns in weekday and overnight time periods.

Pilot Timeline



11/18/2021: One-year pilot approved by Traffic Commission

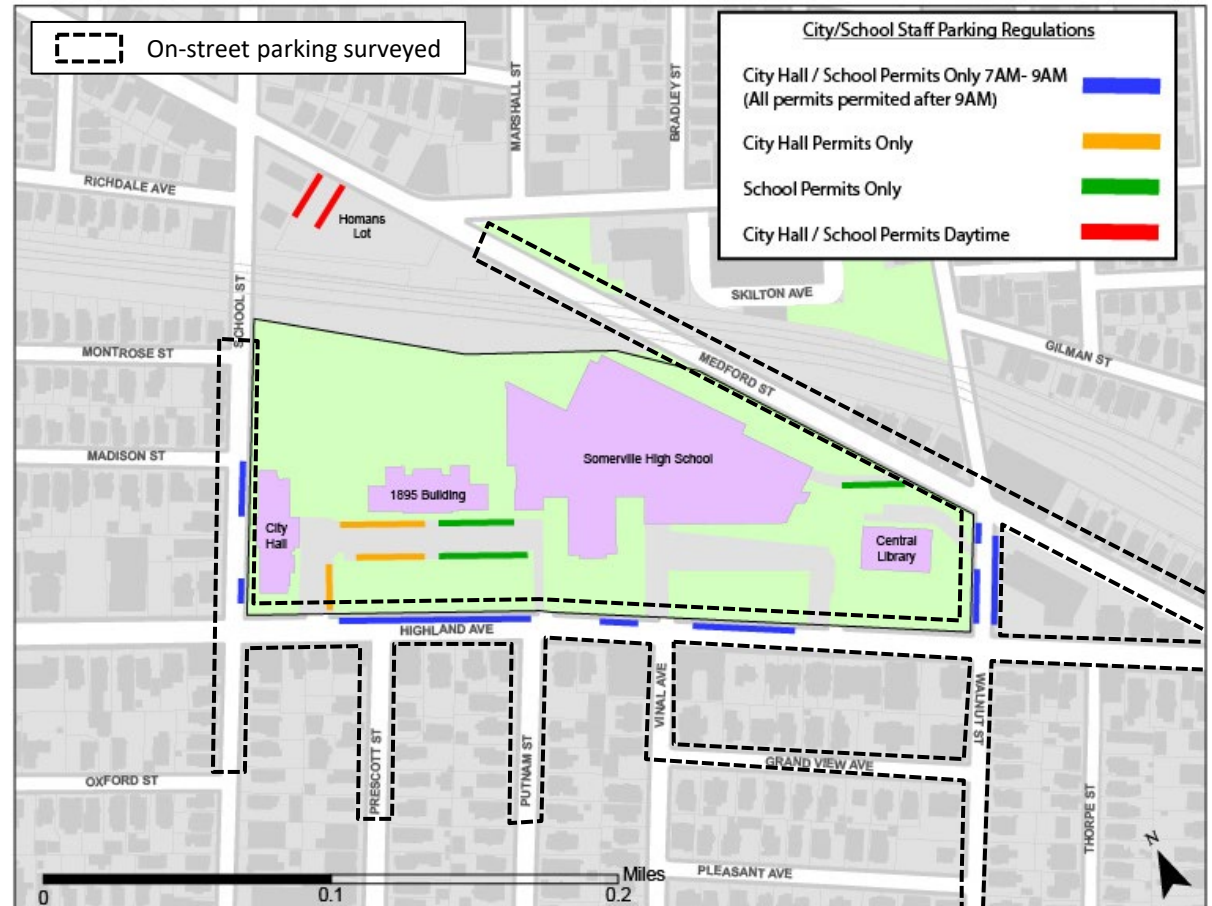
01/24/2022: Signs installed, pilot goes into effect

2023-2025: Pilot extension approved by Traffic Commission annually following collection and review of parking utilization data

June 30, 2026: Pilot extension set to expire

Data Collection Methodologies

On six occasions between 2022-2025, Mobility Division staff have conducted morning parking inventories within the pilot zone and surrounding streets.



Study Findings Summary

Pilot regulations are being used utilized.

- Utilization of SPS staff designated parking spaces peaked between 87-94% of capacity.

Resident parking is available overnight.

- Before 7:00 AM, highest resident parking utilization observed was 82%. (Does not include pilot regulated spaces.)
- Parking available on all streets observed in studies, including Highland Ave, School St, Walnut St, Medford St, and more.

SPS Staff Parking Utilization

Includes: SHS concourse, Homans Lot, 7-9am pilot spaces

	School Staff Designated Parking		
	6:30-7:00am	7:30-8:00am	8:30-9:00am
June 2022	33%	78%	90%
October 2022	46%	82%	89%
April 2023	33%	79%	87%
November 2023	24%	82%	94%
November 2024	43%	88%	92%
November 2025	44%	88%	90%

Efforts to Reduce Parking Demand

Workforce Transit Pass Program

- Free monthly MBTA subway and bus passes available to all City and SPS staff.

Student Transit Pass Program

- Free MBTA subway and bus passes available to all SPS students Grade 7-12 during September-June.

Free annual Bluebikes bike share membership available to all City and SPS staff

- Bluebikes stations are located at City Hall and Somerville High School

Resident Parking Utilization

Includes: RPP, 2-hour except by permit

	Resident Parking		
	6:30-7:00am	7:30-8:00am	8:30-9:00am
June 2022	75%	80%	82%
October 2022	82%	91%	83%
April 2023	77%	83%	87%
November 2023	71%	75%	74%
November 2024	71%	82%	86%
November 2025	76%	80%	80%

Request to Make Existing Pilot Regulations Permanent



Request to Make Existing Pilot Regulations Permanent

- a. Approximately 16 spaces on the north side of Highland Ave between City Hall concourse entrance and exit, regulated as City Hall or School Permit Parking Only from 7:00am to 9:00am, Mon-Fri, School days Only, September-June; 2 hour except by permit 9:00am-2:30am, permit parking only 2:30am-7:00am.
- b. Approximately 9 spaces on the north side of Highland Ave between Somerville High School concourse entrance and exit, regulated as City Hall or School Permit Parking Only from 7:00am to 9:00am, Mon-Fri, School days Only, September-June; 2 hour except by permit 9:00am-2:30am, permit parking only 2:30am-7:00am.
- c. Approximately 5 spaces on the north side of Highland Ave between City Hall concourse entrance and Somerville High School concourse exit, regulated as City Hall or School Permit Parking Only from 7:00am to 9:00am, Mon-Fri, School days Only, September-June; 2 hour except by permit 9:00am-2:30am, permit parking only 2:30am-7:00am.
- d. Approximately 8 spaces on the west side of Walnut St between Highland Ave and Medford St, regulated as City Hall or School Permit Parking Only from 7:00am to 9:00am, Mon-Fri, School days Only, September-June; 2 hour except by permit 9:00am-2:30am, permit parking only 2:30am-7:00am.
- e. Approximately 9 spaces on the east side Walnut St between Highland Ave and Medford St, regulated as City Hall or School Permit Parking Only from 7:00am to 9:00am, Mon-Fri, School days Only, September-June; 2 hour except by permit 9:00am-2:30am, permit parking only 2:30am-7:00am.
- f. Approximately 7 spaces on the east side of School St between Highland Ave to opposite Madison St, regulated as City Hall or School Permit Parking Only from 7:00am to 9:00am, Mon-Fri, School days Only, September-June; 2 hour except by permit 9:00am-2:30am, permit parking only 2:30am-7:00am.

Request to Make Existing Pilot Regulations Permanent

In the years following the initial approval of the pilot in 2021, several major projects with impacts to transportation patterns and parking in the Central Hill area supported a regular review of the pilot

- Medford Street bridge reconstruction
- Green Line and Community Path extensions
- Spring Hill reconstruction

At this time, we anticipate parking demands to stay consistent in Central Hill in upcoming years

- Of note: Highland Avenue and School Street are currently designated for protected bike lanes by 2030 as part of the Priority Network of the City's Bicycle Network Plan

The Mobility Division will continue to monitor curbside demands in the Central Hill area and evaluate regulations as conditions change in the future