

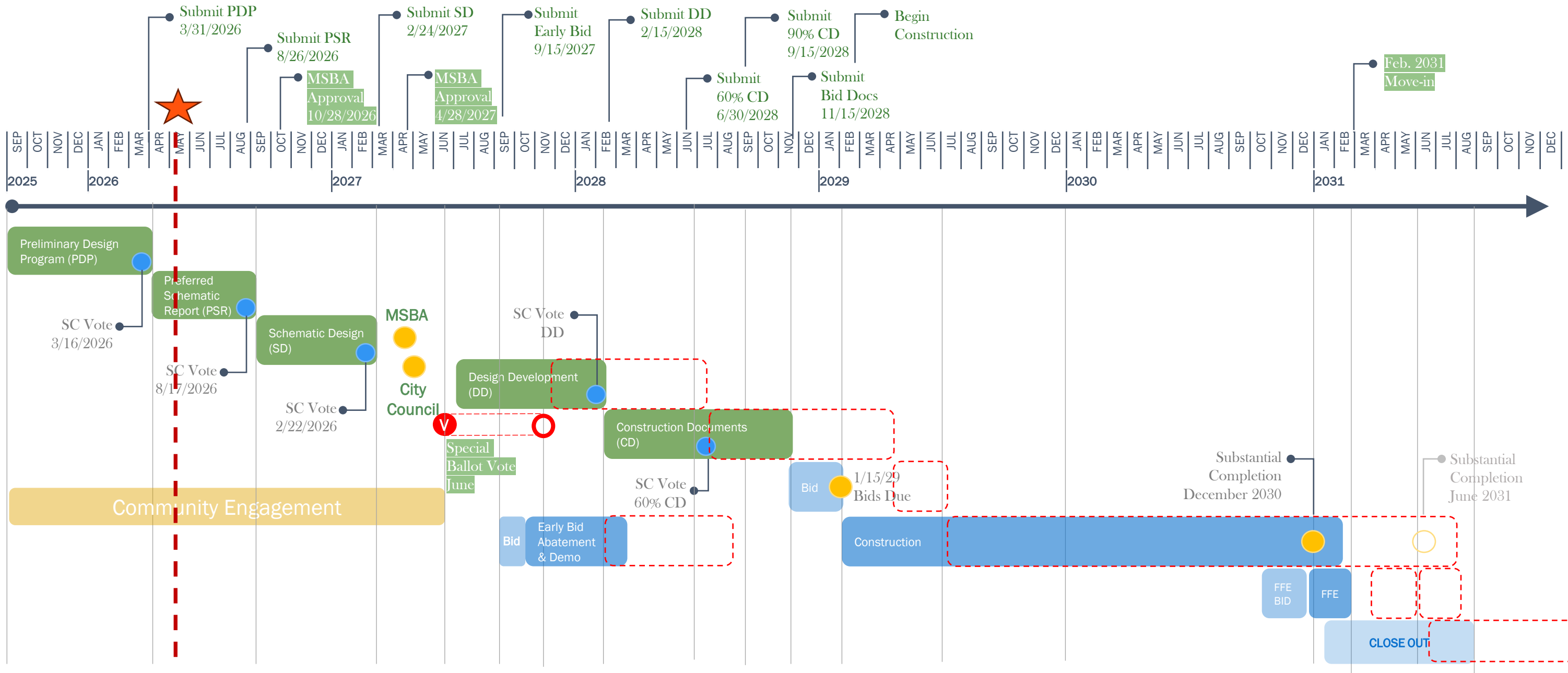


115 Sycamore Street New School Building

Community Programs May 11, 2026

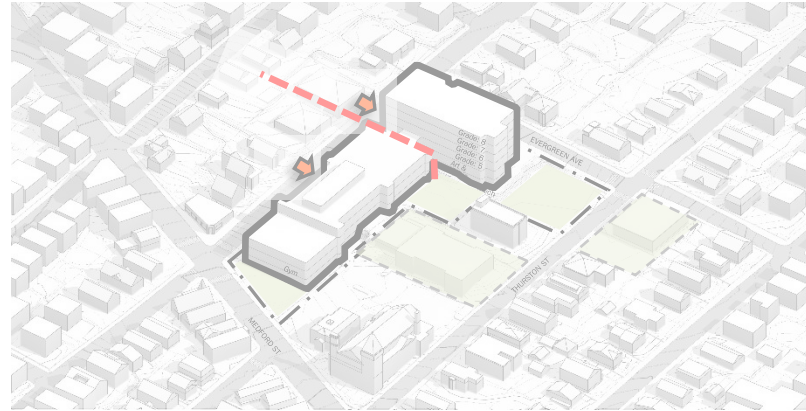
PERKINS —
EASTMAN
Human by Design

PROJECT TIMELINE

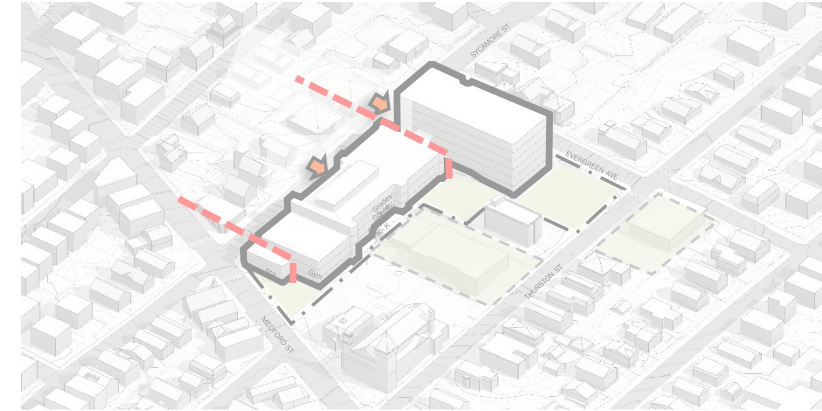


OPTION SUMMARY

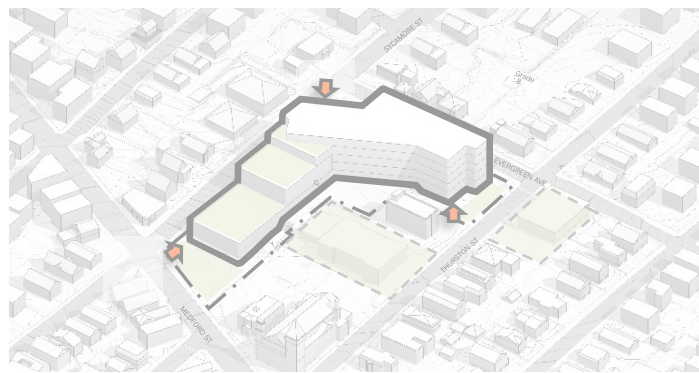
1A ADDITION/RENOVATION
115 SYCAMORE ST. 690 STUDENTS



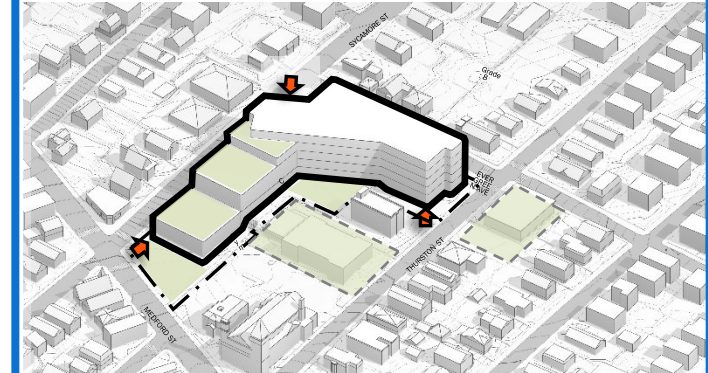
1B ADDITION/RENOVATION
115 SYCAMORE ST. 925 STUDENTS



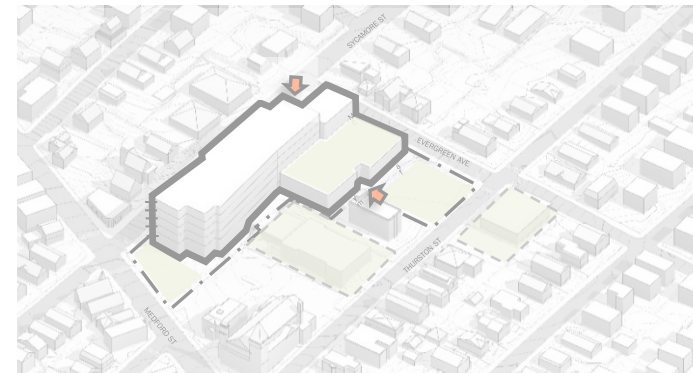
2A NEW CONSTRUCTION
115 SYCAMORE ST. 690 STUDENTS



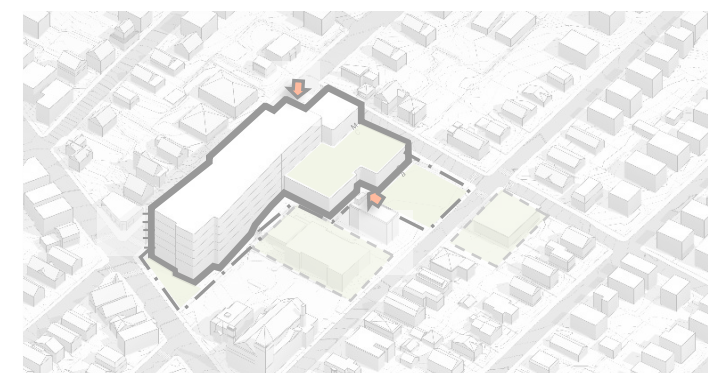
2B NEW CONSTRUCTION
115 SYCAMORE ST. 925 STUDENTS



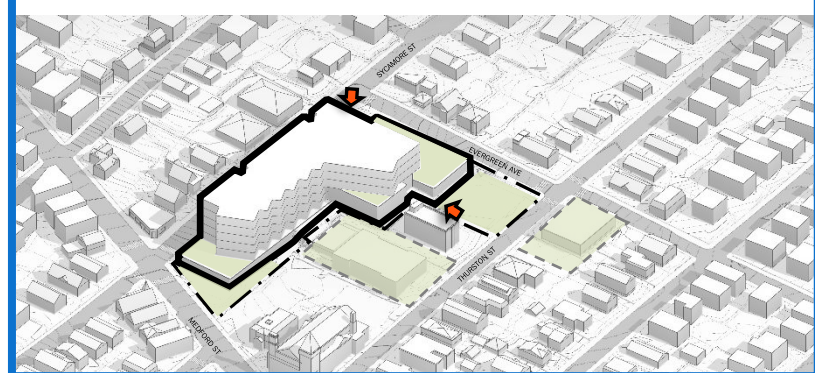
3A NEW CONSTRUCTION
115 SYCAMORE ST. 690 STUDENTS



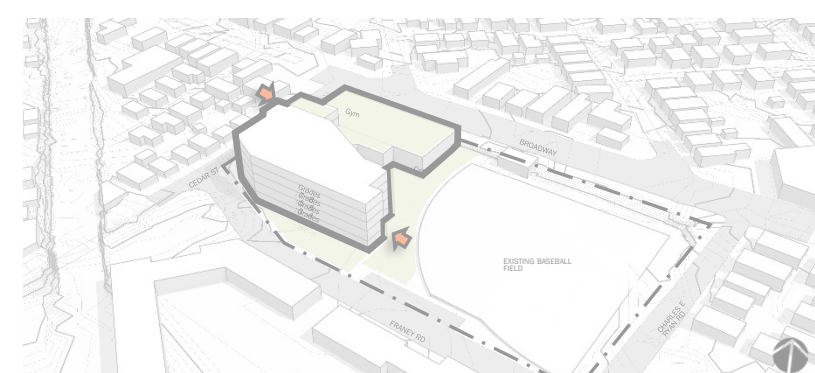
3B NEW CONSTRUCTION
115 SYCAMORE ST. 925 STUDENTS



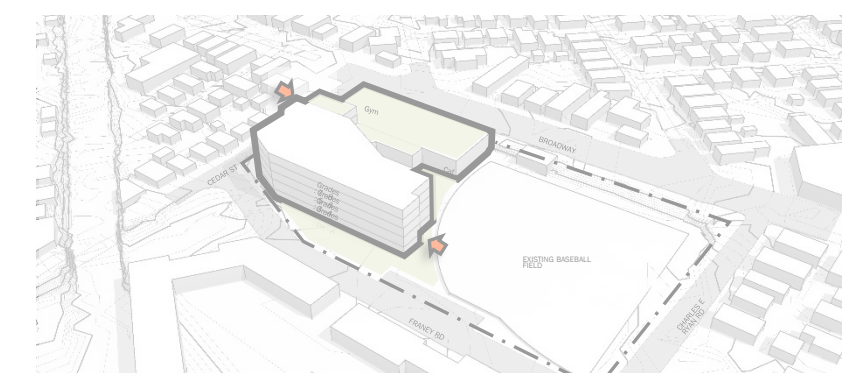
4 NEW CONSTRUCTION
115 SYCAMORE ST. 925 STUDENTS



5A NEW CONSTRUCTION
TRUM FIELD. 690 STUDENTS



5B NEW CONSTRUCTION
TRUM FIELD. 925 STUDENTS



EXISTING SITE AT 115 SYCAMORE STREET



EXISTING OUTDOOR EQUIPMENT



PLAYGROUND EQUIPMENT
Quantity: 4 Condition: Fair



PLAYGROUND EQUIPMENT
Quantity: 1 Set Condition: Fair



CUSTOM EQUIPMENT SET (LANDSCAPE STRUCTURE)
Quantity: 1 Set Finished Year: 2018 Condition: Good



VIKING SWING 2.5 (GORIC)
Quantity: 1 Finished Year: 2018 Condition: Fair



CUSTOM PLAY EQUIPMENT SET (LITTLE TIKES)
Quantity: 1 Set Finished Year: 2018 Condition: Good



MONKEY TRAIL (KOMPAN)
Quantity: 1 Set Finished Year: 2018 Condition: Good



FIELD LIGHT
Quantity: 4 Condition: Fair



SLIDE
Quantity: 1 Condition: Fair



PLAYGROUND/FIELD SIGNAGE
Quantity: 4 Condition: Fair



PLAYGROUND EQUIPMENT

Winter Hill Community Innovation School

SCHOOL AND COMMUNITY PROGRAMS

Internal Stakeholders:

- SomerPromise + SFLC
- Parks and Recreation
- DPW
- SPS community

External Stakeholders:

- Abutter/neighbors
- Parkour Generations
- SBC
- Sports leagues that historically used WHCIS field

COMMUNITY INPUT TO DATE

- Easily Accessible Playground Space
- Soccer Field – same size or bigger
- Full Size Basketball Court
- Hardscape for teaching kids to ride bikes (BB Court)
- Walking track
- Play Structures for various age groups and abilities
- Mae’s Garden (and possible Community Garden)
- Parkour Group
- After hour public toilets
- Dedicated community space inside of the school
- Community access to Cafeteria and Gym
- Cooling and Warming Shelter
- Space to vote (without having to close school)
- Community space for Birthday Parties and Family Events



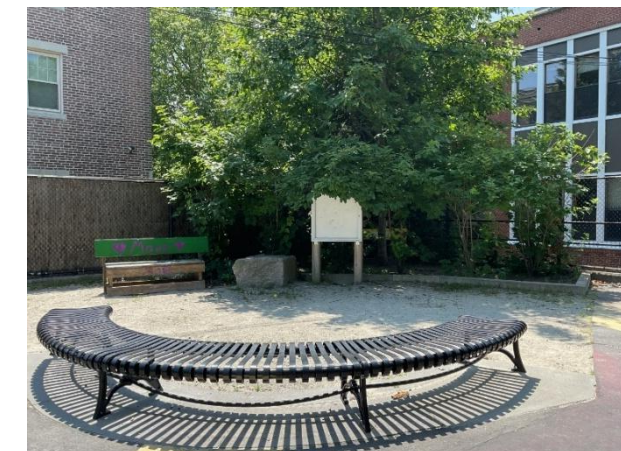
SCHOOL COMMUNITY INPUT TO DATE

Spaces to be accessed include:

- Media Center/Computer Lab
- Gym & alternative PE space
- Caf & ideally teaching kitchen
- AIM's Life Skills suite
- (IEP) Conference space
- Specialty STE, Maker or Fab Lab spaces
- Playgrounds

Somerville Family Learning Center

- Welcome center for families to enroll, onboard, get assistance, use computers w/o going to main office
- Play group space for up to 40 (use sectioned-off cafe space)
- Food pantry/freezer and 2nd hand clothing shop
- ideally independent from the school with access to shared spaces



OPTION 2B



Main Floor & Site

OPTION 4

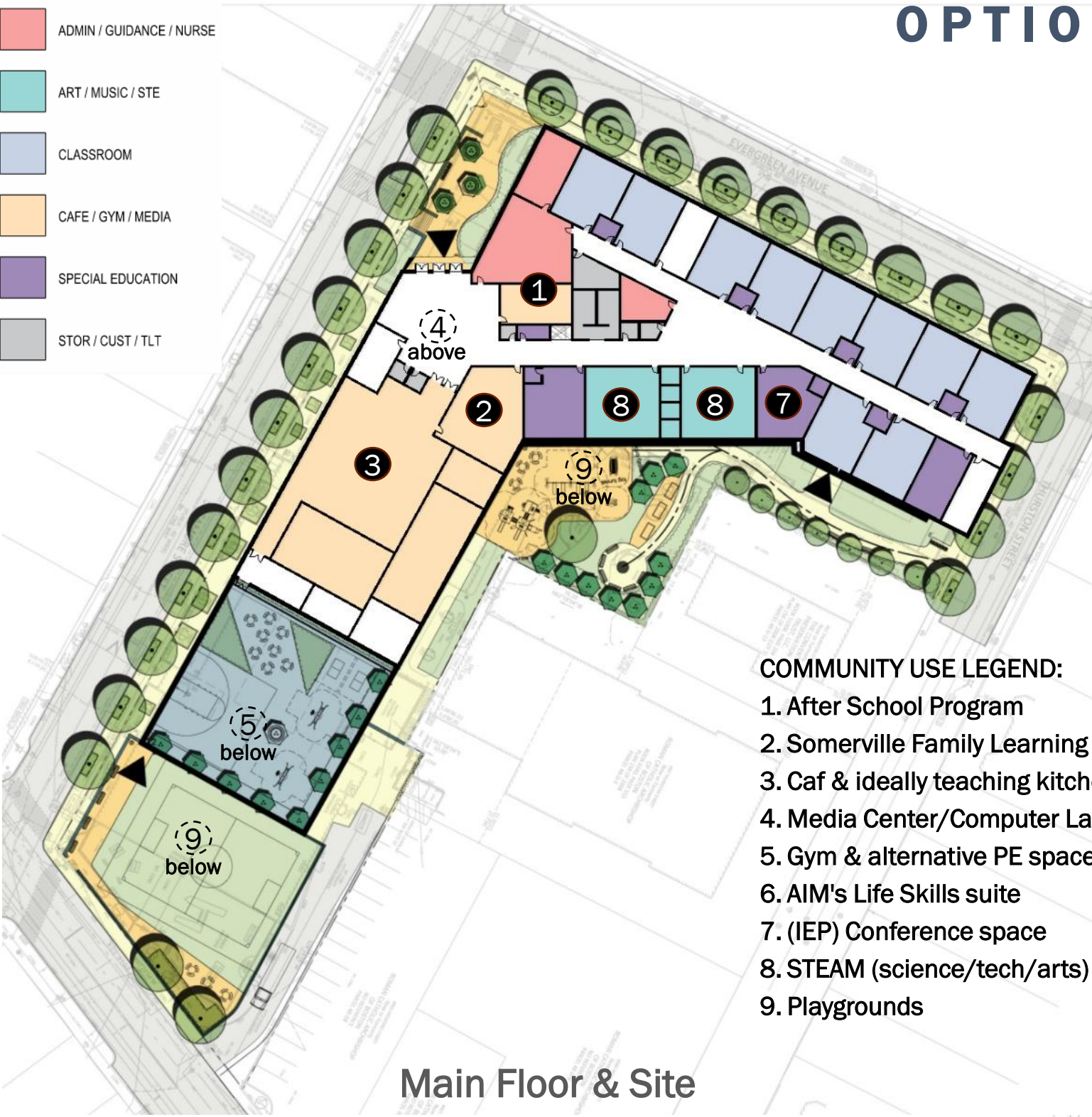


Main Floor & Site



OPTION 2B

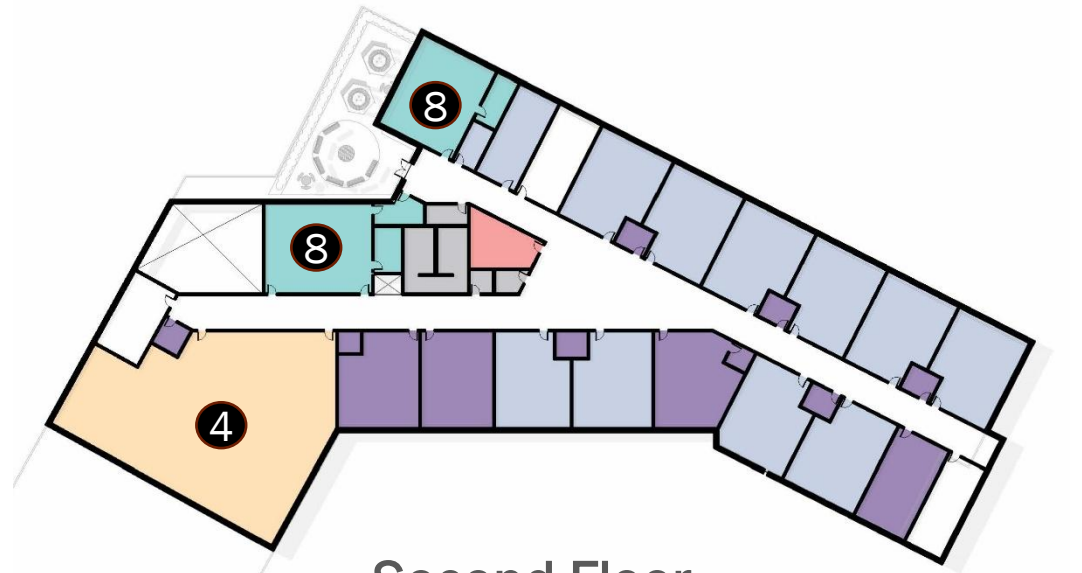
- ADMIN / GUIDANCE / NURSE
- ART / MUSIC / STE
- CLASSROOM
- CAFE / GYM / MEDIA
- SPECIAL EDUCATION
- STOR / CUST / TLT



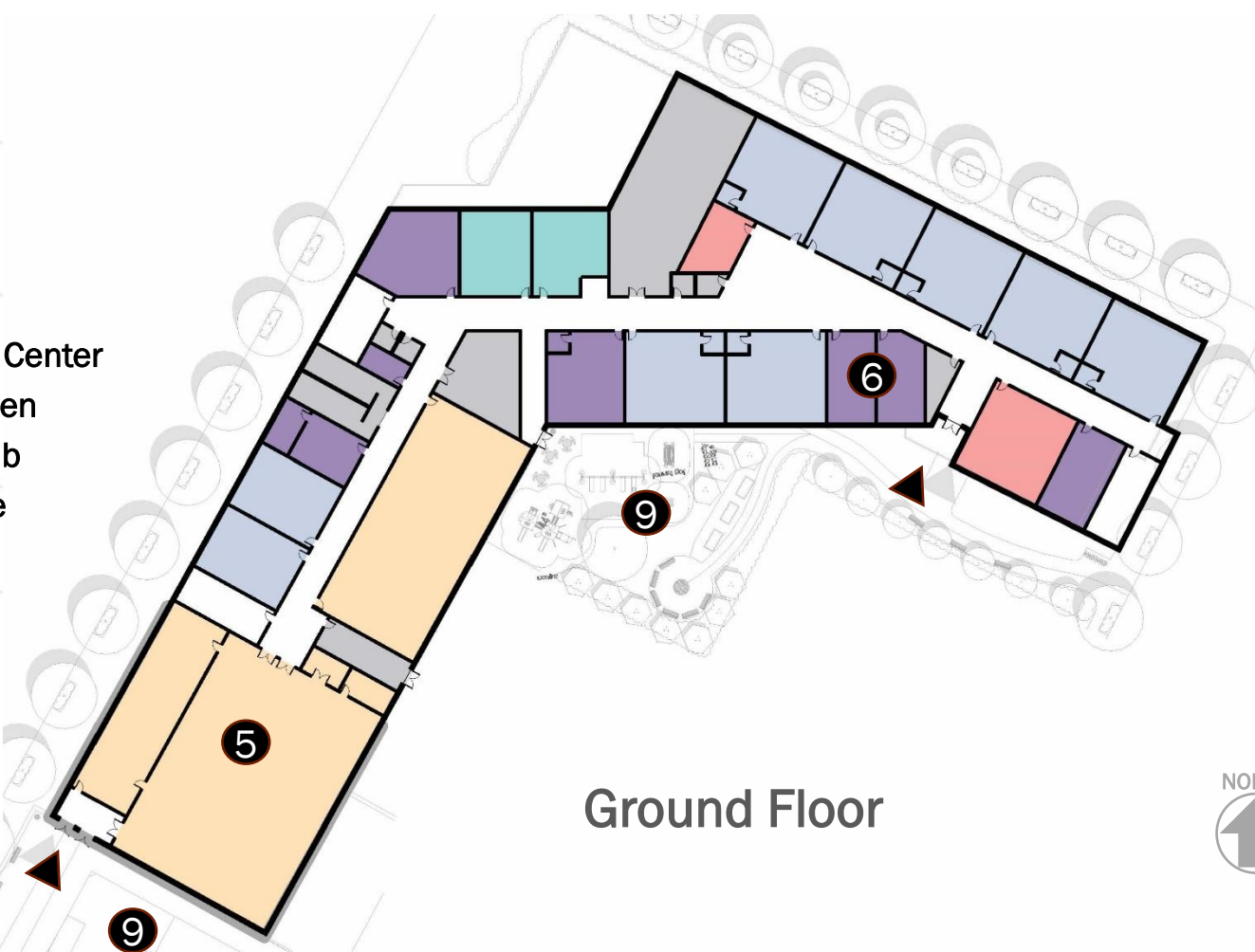
Main Floor & Site

COMMUNITY USE LEGEND:

1. After School Program
2. Somerville Family Learning Center
3. Caf & ideally teaching kitchen
4. Media Center/Computer Lab
5. Gym & alternative PE space
6. AIM's Life Skills suite
7. (IEP) Conference space
8. STEAM (science/tech/arts)
9. Playgrounds



Second Floor

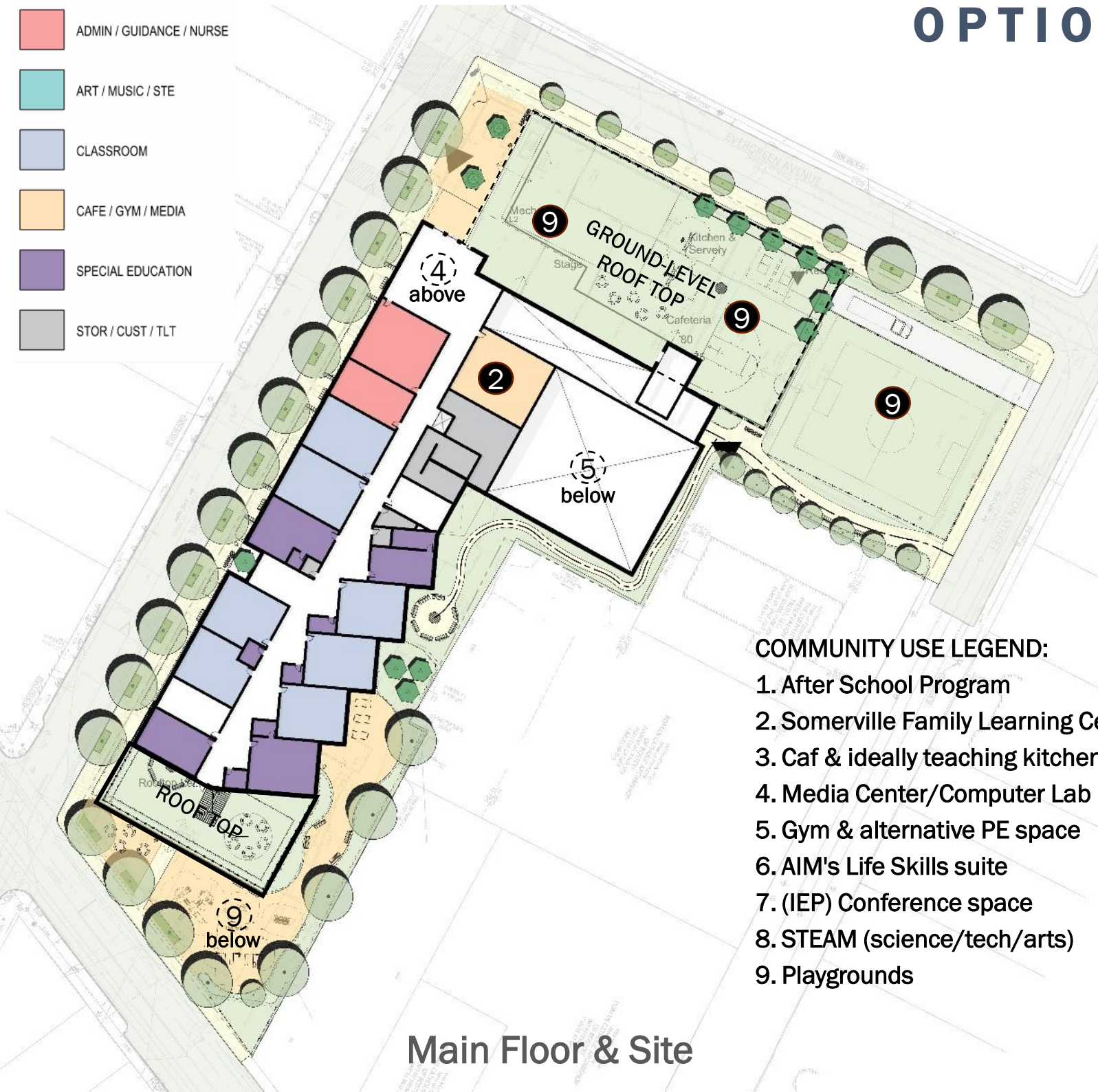


Ground Floor



OPTION 4

- ADMIN / GUIDANCE / NURSE
- ART / MUSIC / STE
- CLASSROOM
- CAFE / GYM / MEDIA
- SPECIAL EDUCATION
- STOR / CUST / TLT

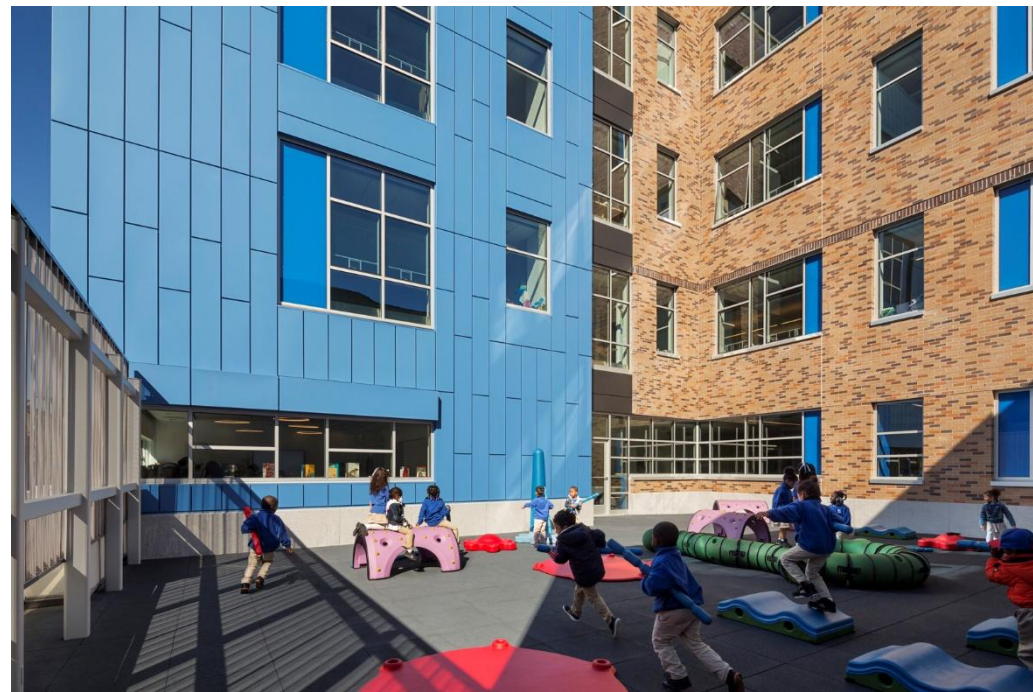


COMMUNITY USE LEGEND:

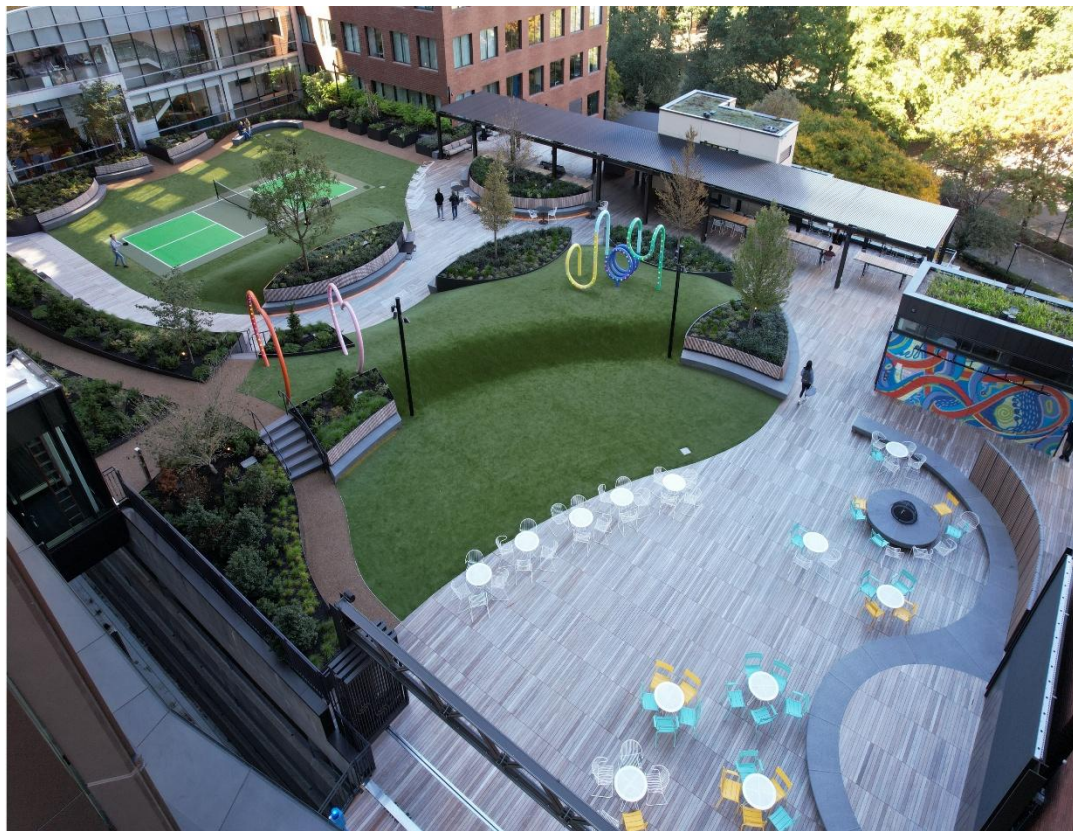
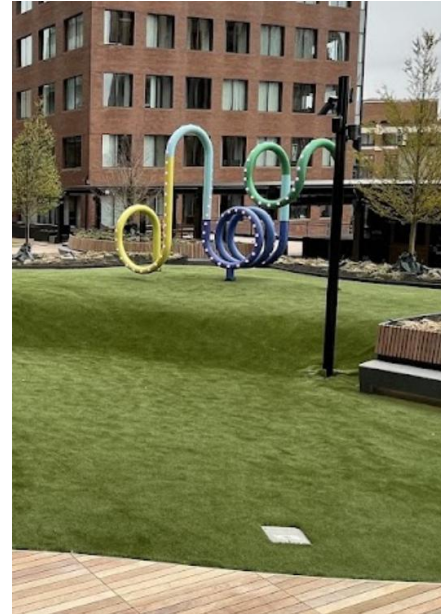
1. After School Program
2. Somerville Family Learning Center
3. Caf & ideally teaching kitchen
4. Media Center/Computer Lab
5. Gym & alternative PE space
6. AIM's Life Skills suite
7. (IEP) Conference space
8. STEAM (science/tech/arts)
9. Playgrounds



ROOFTOP PLAY SPACE CONCEPTS



ROOFTOP PLAY SPACE CONCEPTS



INDOOR COMMUNITY SPACES



BREAKOUT GROUPS

Steve

Station 1

Children

Outside Spaces

- Play structures
- Outdoor Learning
- Afterschool Programs
- Summer Programs
- Sports
- Gardens
- Performance

Lisa

Station 2

Adult

Outside Spaces

- Outdoor Learning
- Sports
- Garden
- Performance
- Gathering

Emily/Bob

Station 3

Children

Inside Spaces

- Play space
- STEM
- Media Center
- Cafeteria
- Gym

Dan

Station 4

Adult

Inside Spaces

- Family
- Food Pantry
- Adult Education
- STEM
- Media Center
- Cafeteria
- Gym
- Kitchen