

318 Harvard Street
Suite 25
Brookline, MA 02446
617.735.1180
Verdantla.com

Date: 03/12/26
To: Planning, Preservation & Zoning
City of Somerville
From: Erin Hossaini-Fitch, Verdant LA
Re: 32 Webster Street, ZP25-000097

To Estello and Whomever this May Concern,

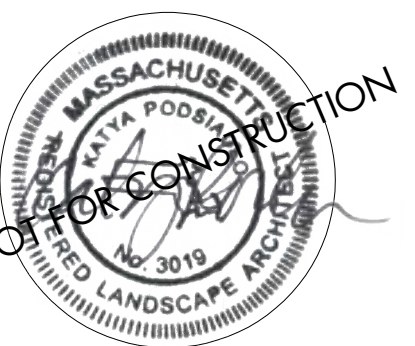
Please see below our responses to the plan review comments received March 9, 2026.

VLA Responses as follows:

1. *Approval Condition Noted as Complete 12/30/25*
2. *Record Comment has been accommodated on Revised Landscape Set previously submitted (dated 12/08/25).*
3. *Record Comment has been accommodated on Revised Landscape Set previously submitted (dated 12/08/25).*
4. *Approval Condition Noted as Complete 12/30/25*
5. *Zoning requirement noted and met*
6. *Zoning requirement noted and met*
7. *Zoning requirement noted and met*
8. Please refer to revised Landscape Sheets dated 03/12/26 – sheet L1 Tree Protection & Removal Plan. Refer to Tree Survey table as provided on sheet L1 for additional information regarding existing trees.
9. Please refer to revised Landscape Sheets dated 03/12/26 – all Tree Protection Fencing notes have been revised to note direction by City Tree Warden rather than City Arborist.
10. Please refer to revised Landscape Sheets dated 03/12/26 – Tree Protection Prior to Site Work notes have been revised to note coordination with City Tree Warden as directed.
11. Please refer to revised Landscape Sheets dated 03/12/26 – sheet L2 for images of existing trees. Refer to Updated Existing Conditions Plan as applicable. Official tree removal permit exemption to be provided by Owner as applicable.

Sincerely,

Verdant Landscape Architecture, Inc.
Erin Hossaini-Fitch, PLA *LEED Green Associate*
Associate / Project Landscape Architect



REVISIONS		
MARK	ISSUE	DATE

DRAWING INFORMATION
ISSUE: _____
DATE: REVISED 03/12/2026
SCALE: AS NOTED

PROJECT NUMBER:
DRAWN BY: EH
CHECKED BY: KP

DRAWING TITLE
**EXISTING TREE
IMAGERY**

DRAWING NUMBER
L2
© Verdant Landscape Architecture



Tree #1: Black Cherry, Snag/Suckering from Stump



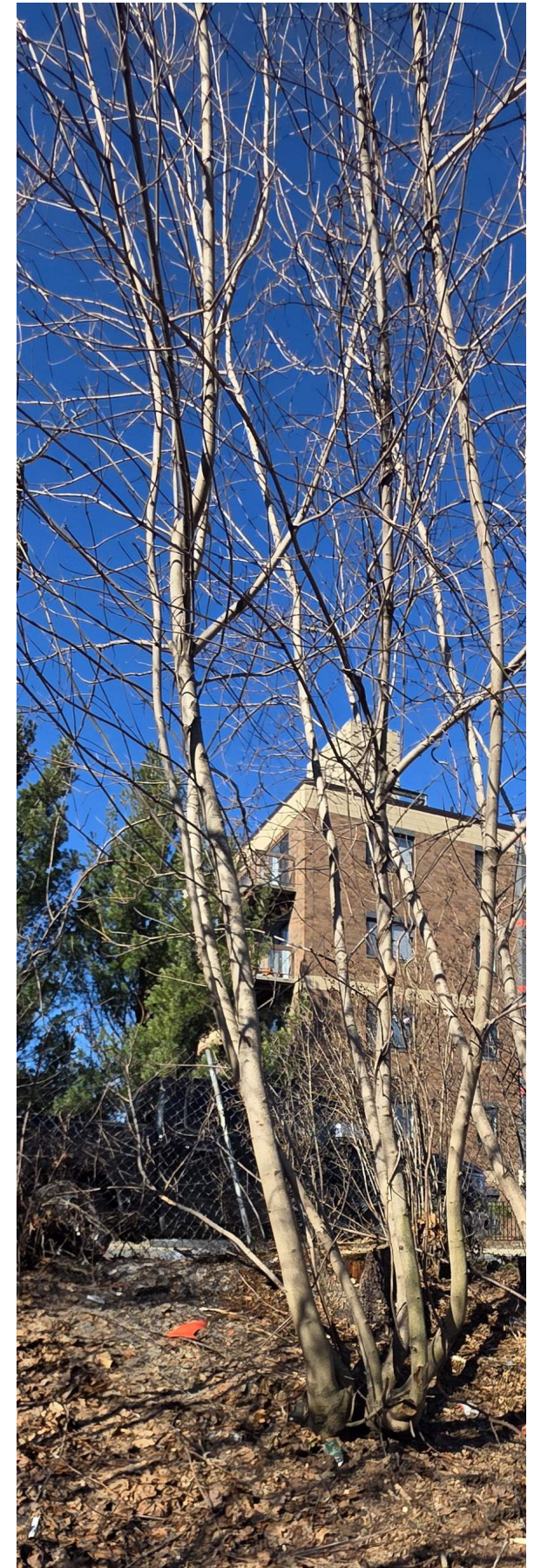
Tree #2: 28" Ash



Tree #3: 10" Ash



Tree #4: 8" Norway Maple



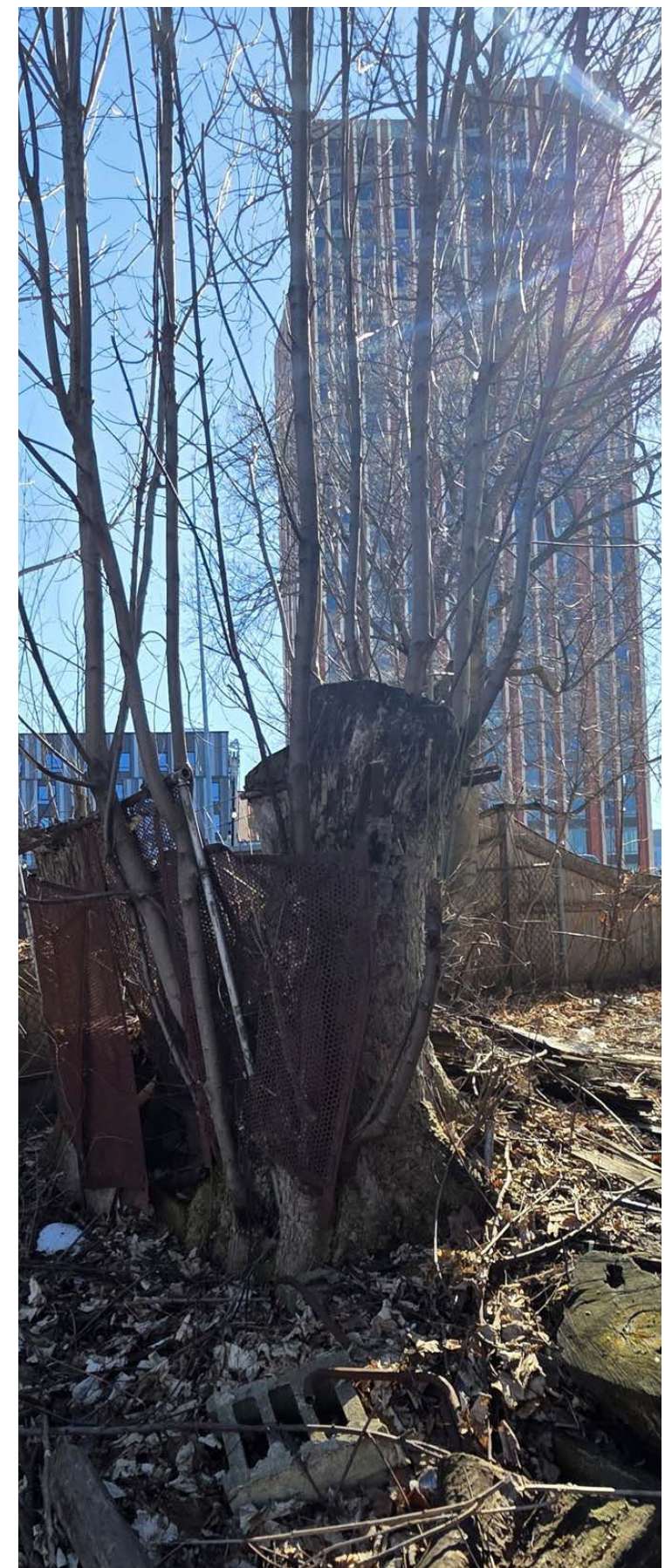
Tree #5: 8" Multi-Stem Norway Maple



Tree #6: Sycamore Maple Snag/Suckering from Stump



Tree #7: 6" Amur Cork



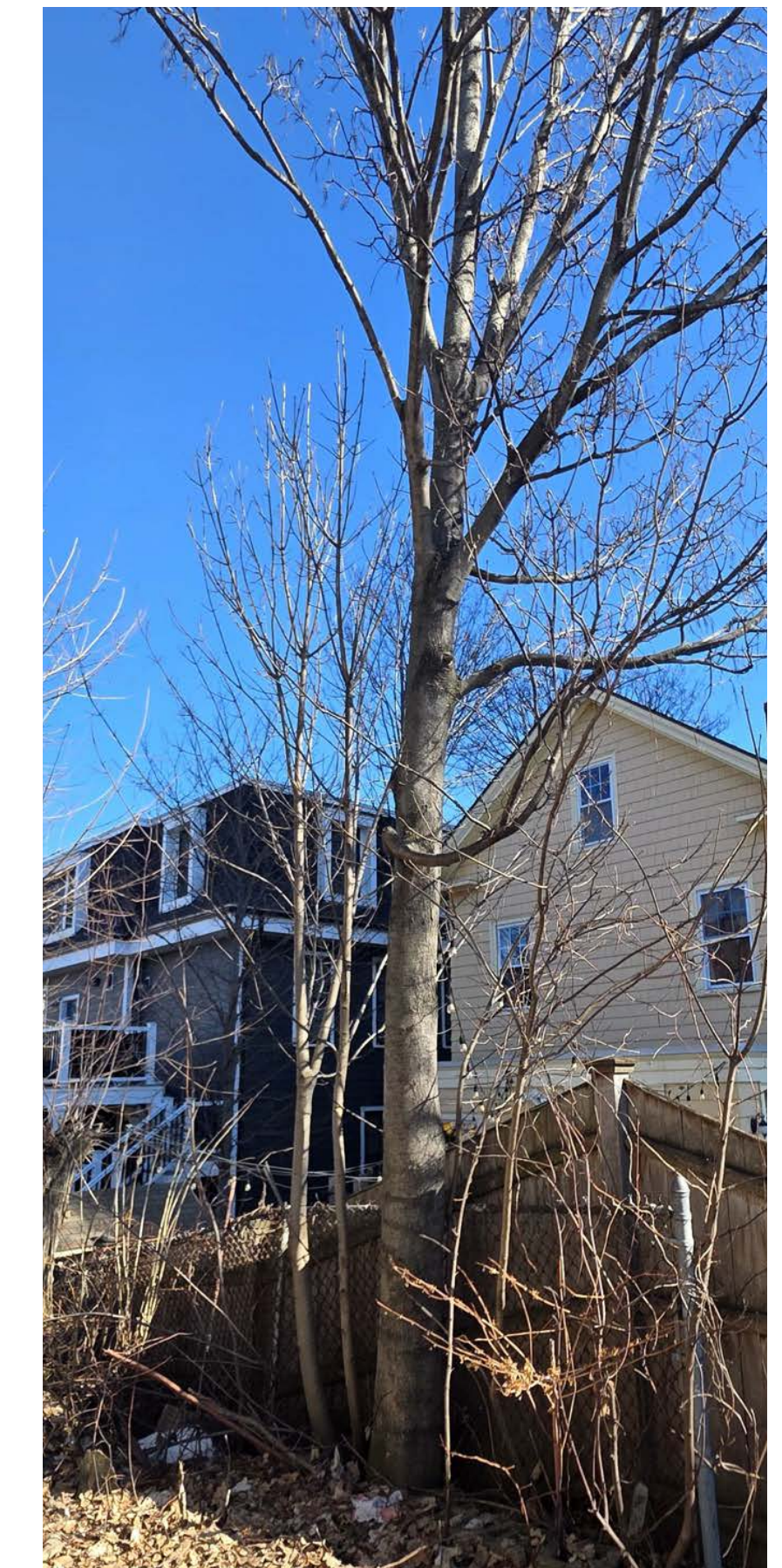
Tree #8: Sycamore Maple Snag/Suckering from Stump



Tree #9: 5" Norway Maple



Tree #10: Red Oak Snag/Suckering from Stump



Tree #11: 11" Norway Maple