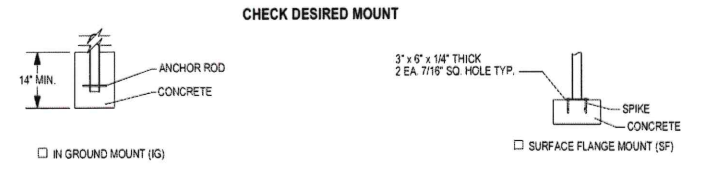
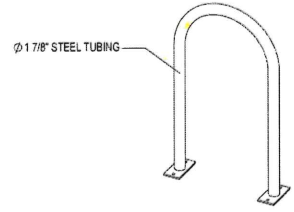
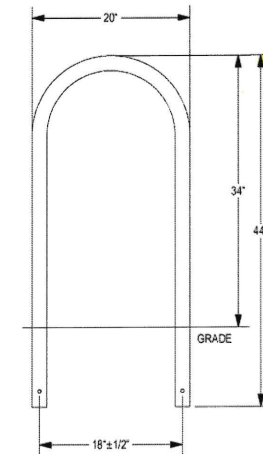
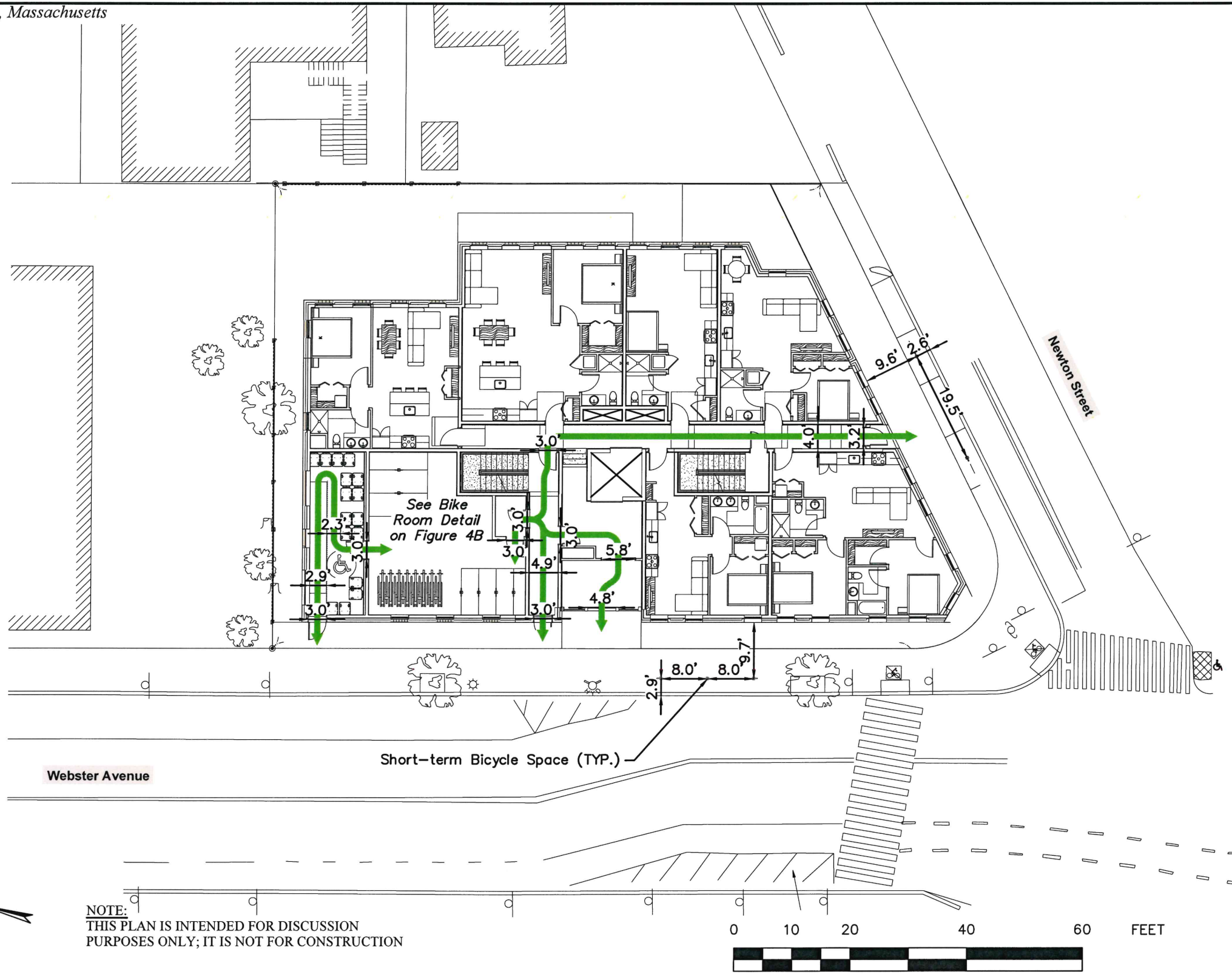




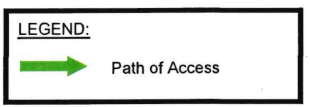
MADRAX DIVISION
GRABER MANUFACTURING, INC.
1086 UNIEK DRIVE
WALNANCE, WI 53597
P(800) 448-7931, P(608) 849-1080, F(608) 849-1081
WWW.MADRAX.COM, E-MAIL: SALES@MADRAX.COM



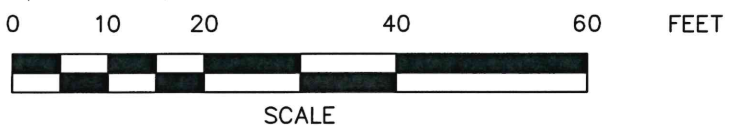
PRODUCT: U199-IG(SF)
DESCRIPTION: 1/ BIKE RACK
2 BIKE, SURFACE OR IN GROUND MOUNT
DATE: 10-4-18
ENG: SMC
CONFIDENTIAL DRAWING AND INFORMATION IS NOT TO BE COPIED OR DISCLOSED TO OTHERS WITHOUT THE CONSENT OF GRABER MANUFACTURING, INC. SPECIFICATIONS ARE SUBJECT TO CHANGE WITHOUT NOTICE.
©2019 GRABER MANUFACTURING, INC. ALL PROPRIETARY RIGHTS RESERVED.

NOTES:
1. INSTALL BIKE RACKS ACCORDING TO MANUFACTURER'S SPECIFICATIONS.
2. CONSULTANT TO SELECT COLOR FINISH. SEE MANUFACTURER'S SPECIFICATIONS.
3. SEE SITE PLAN FOR LOCATION OR CONSULT OWNER.

SHORT-TERM BICYCLE RACK DETAIL
NOT TO SCALE



NOTE:
THIS PLAN IS INTENDED FOR DISCUSSION PURPOSES ONLY; IT IS NOT FOR CONSTRUCTION

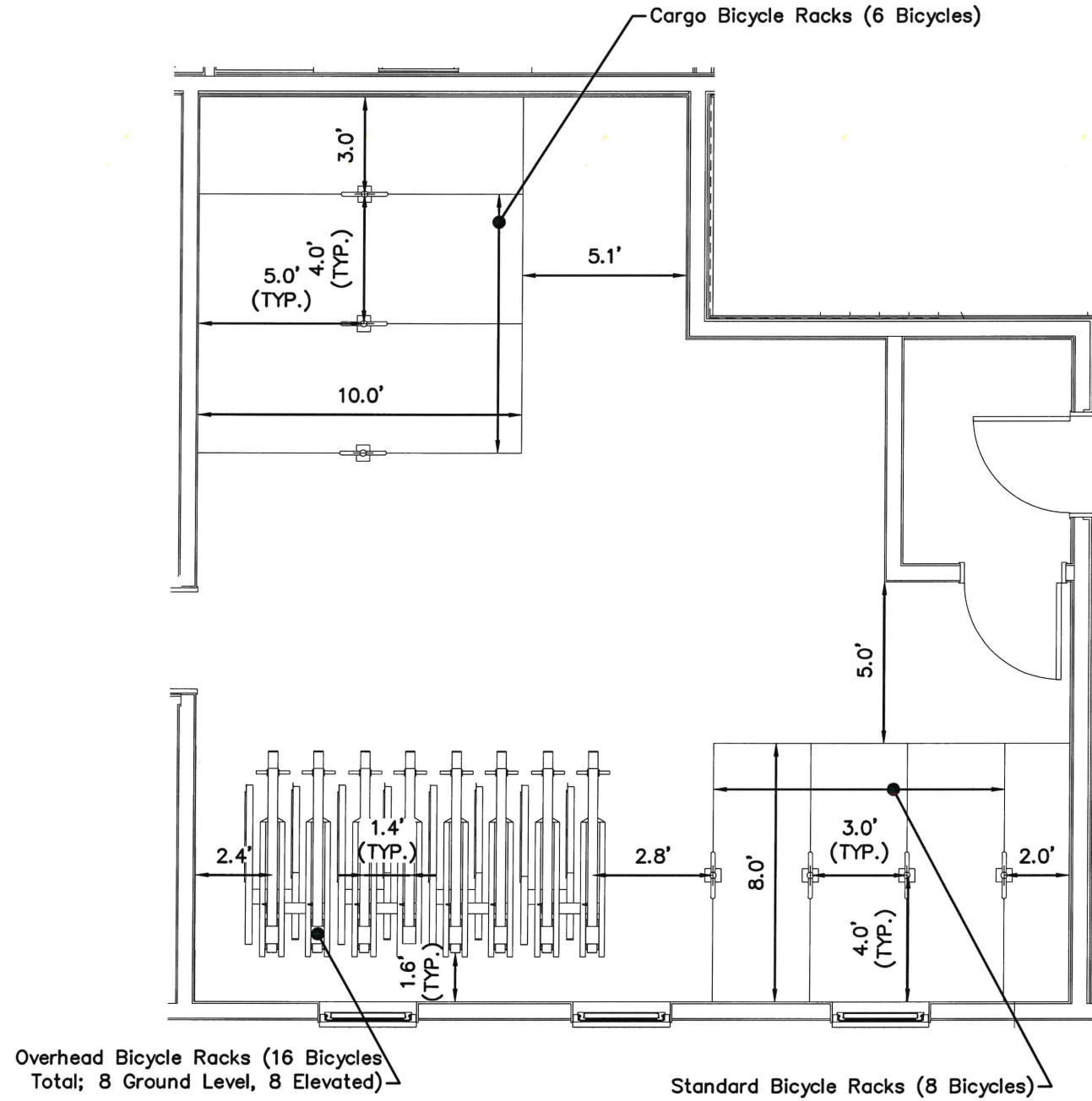


Scale: 1" = 20'

Source: Balance Architects

Figure 4A

Bicycle Parking Plan



NOTE:
THIS PLAN IS INTENDED FOR DISCUSSION PURPOSES ONLY; IT IS NOT FOR CONSTRUCTION

BICYCLE ROOM DETAIL
SCALE: 1" = 5'

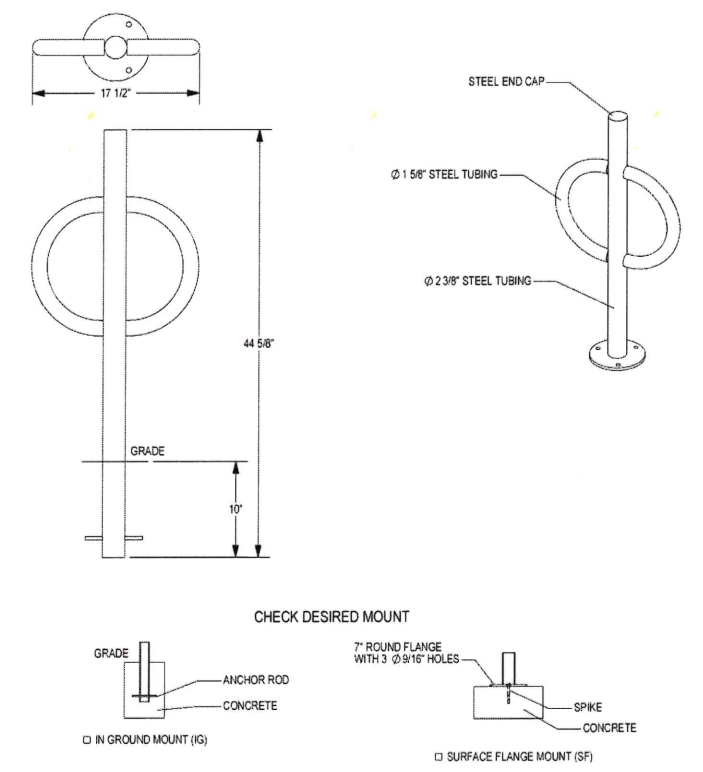
Scale: As Noted



MADRAX DIVISION
GRABER MANUFACTURING, INC.
1080 UNIEK DRIVE
WALWAKEE, WI 53597
P(800) 448-7931, P(608) 849-1080, F(608) 849-1081
WWW.MADRAX.COM, E-MAIL: SALES@MADRAX.COM

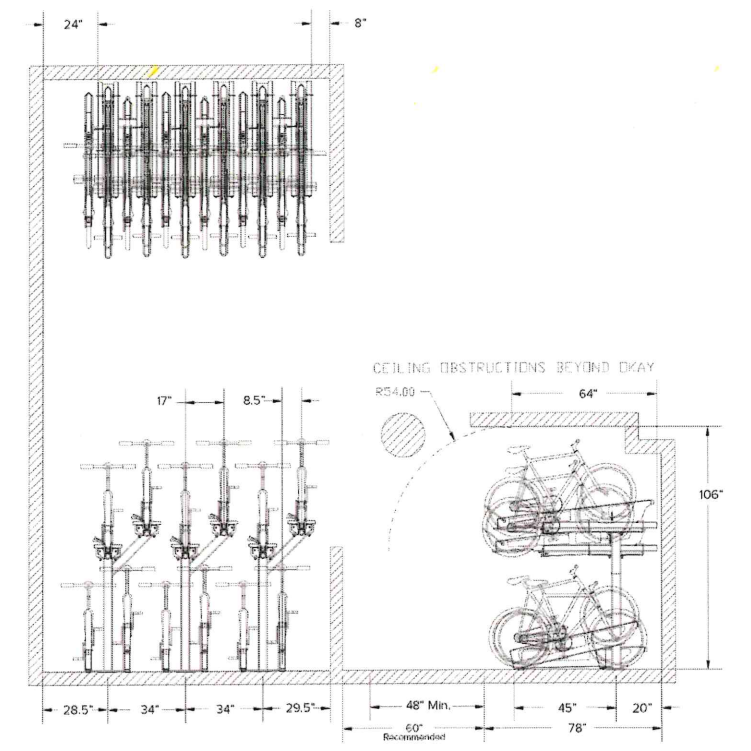


Setbacks Single Sided



PRODUCT: PAR-2-SF(IG)
DESCRIPTION: POST AND RING BIKE RACK WITH FLAT CAP, TUBE STEEL ARMS
2 BIKE, SURFACE OR IN GROUND MOUNT
DATE: 10-17-18
ENG: SMC
CONFIDENTIAL DRAWING AND INFORMATION IS NOT TO BE COPIED OR DISCLOSED TO OTHERS WITHOUT THE CONSENT OF GRABER MANUFACTURING, INC. SPECIFICATIONS ARE SUBJECT TO CHANGE WITHOUT NOTICE.
©2018 GRABER MANUFACTURING, INC. ALL PROPRIETARY RIGHTS RESERVED.

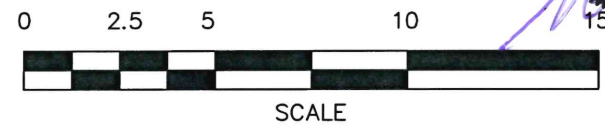
STANDARD/CARGO BICYCLE RACK DETAIL
NOT TO SCALE



OVERHEAD BICYCLE RACK DETAIL
NOT TO SCALE

NOTES:
1. INSTALL BIKE RACKS ACCORDING TO MANUFACTURER'S SPECIFICATIONS
2. CONSULTANT TO SELECT COLOR FINISH; SEE MANUFACTURER'S SPECIFICATIONS
3. SEE SITE PLAN FOR LOCATION OR CONSULT OWNER.

NOTES:
1. THIS PLAN IS INTENDED FOR DISCUSSION PURPOSES ONLY; IT IS NOT FOR CONSTRUCTION.
2. 29 LONG-TERM BICYCLE SPACES ARE REQUIRED (30 ARE PROVIDED); OF WHICH, AT LEAST 20% (6 OR MORE) MUST ACCOMMODATE LARGER CARGO BICYCLES (ASSUMED TO OCCUPY 8' OR LESS OF LENGTH) AND A MAXIMUM OF 25% (UP TO 7) CAN BE ELEVATED. THE OVERHEAD RACK SYSTEM IDENTIFIED IS MANUFACTURED IN EVEN NUMBERED SETS, THEREFORE EIGHT OVERHEAD RACKS ARE PROVIDED.



4.7.24

Source: Balance Architects

Figure 4B

Bicycle Parking Details