

42 Spring Street, Somerville, MA 02143

The Pond-Hayden-Carter House is a Greek Revival structure built in 1845. Today, the idiosyncratic home is popularly known as the "Pink House" and the "Barbie House," and has been featured in publications such as *The Boston Globe*, *Boston Magazine*, and *USA Today*.

The owner proposes modest exterior changes in conjunction with a broader scope of base-building repairs. The intent is to execute these changes in a manner that honors the previous owner's distinctive aesthetic, allowing the home to maintain a unified appearance. For the Commission's review, we are providing two options for each proposed change: (1) the owner's preferred option, which seeks to match the existing conditions, and (2) an alternate option, should the Commission find the preferred approach unsuitable.

The proposed changes include the following:

(1) Basement Entry & Canopy:

A new entry into the basement from the exterior driveway, including an entry canopy designed to reflect the existing dormer on the north elevation of the house. The proposed canopy features a standing seam metal roof to match the roofing elsewhere on the structure, along with a gable bracket to replicate the one found on the north elevation. The paint colors will also match the existing house, predominantly featuring purple, yellow, and pink. *The alternate offered is a more modest hipped-roof canopy, ideally also painted to match the existing palette.*

(2) Rear Dormer Pediment:

A new pediment decoration on one of the rear dormers, designed to mirror the ornamentation on the north dormer referenced above. Paint colors will match the existing palette. *The alternate offered is simply horizontal clapboards.*

(3) Driveway:

A new driveway consisting of granite cobble borders with similar-colored pavers laid in a random ashlar pattern in between. *The alternate offered here is a brick herringbone pattern.*



42 SPRING STREET
SITE WORK + NEW ENTRY
42 SPRING ST., SOMERVILLE MA 02143

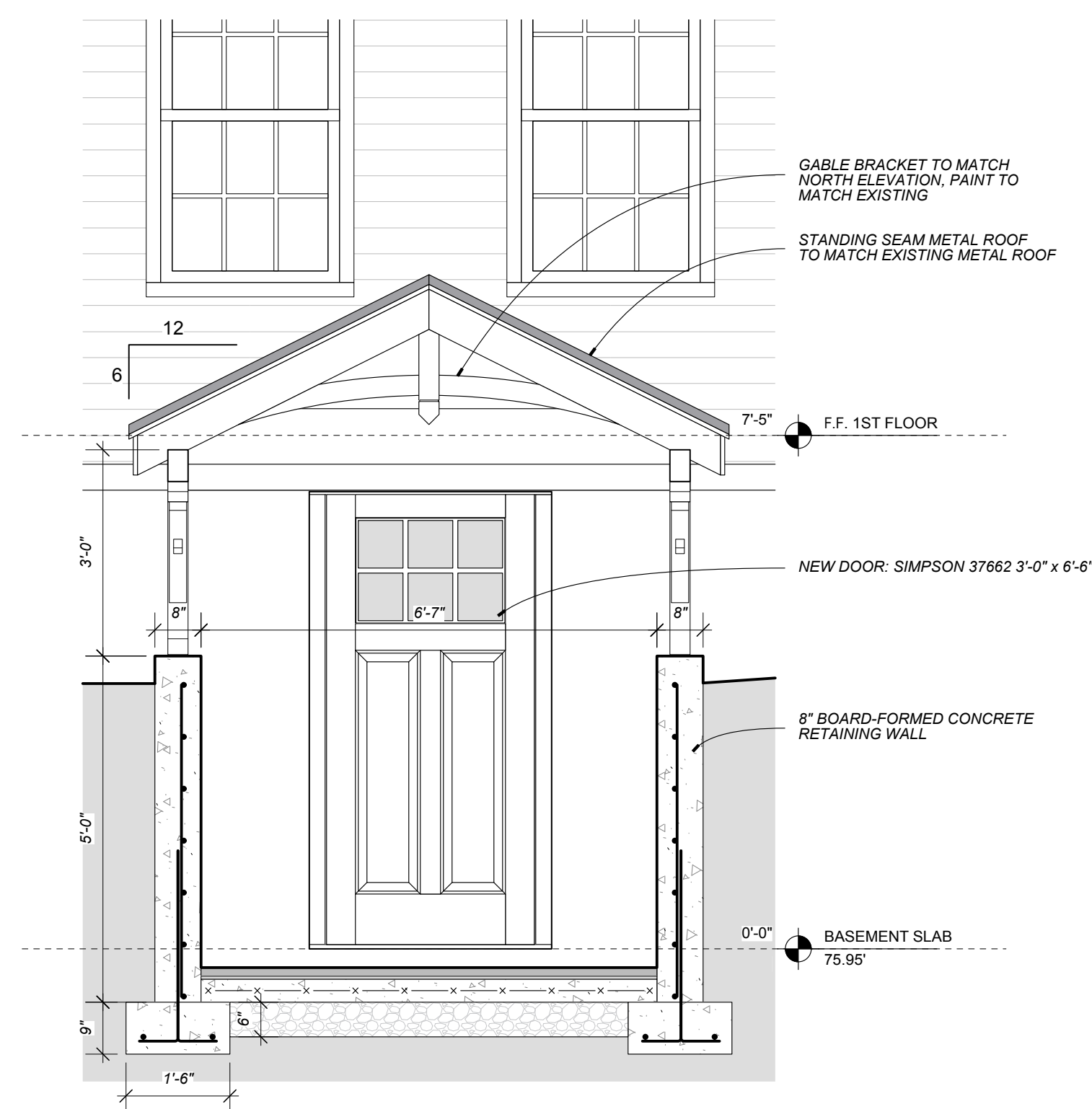
Garth Goldstein Studio, Inc.
490 Broadway • suite 4 • somerville, ma 02145
garth@ggs-studio.com • 617 308 3094

Civil Engineer
BOSTON CITY STREET #202
BOSTON, MA 02127
413.281.6615

Structural Engineer
GOWEN ASSOCIATES
100 STATE STREET
NATICK, MA 01760
508.656.3876

HISTORIC REVIEW 3-31-26
ISSUED FOR NO. DATE

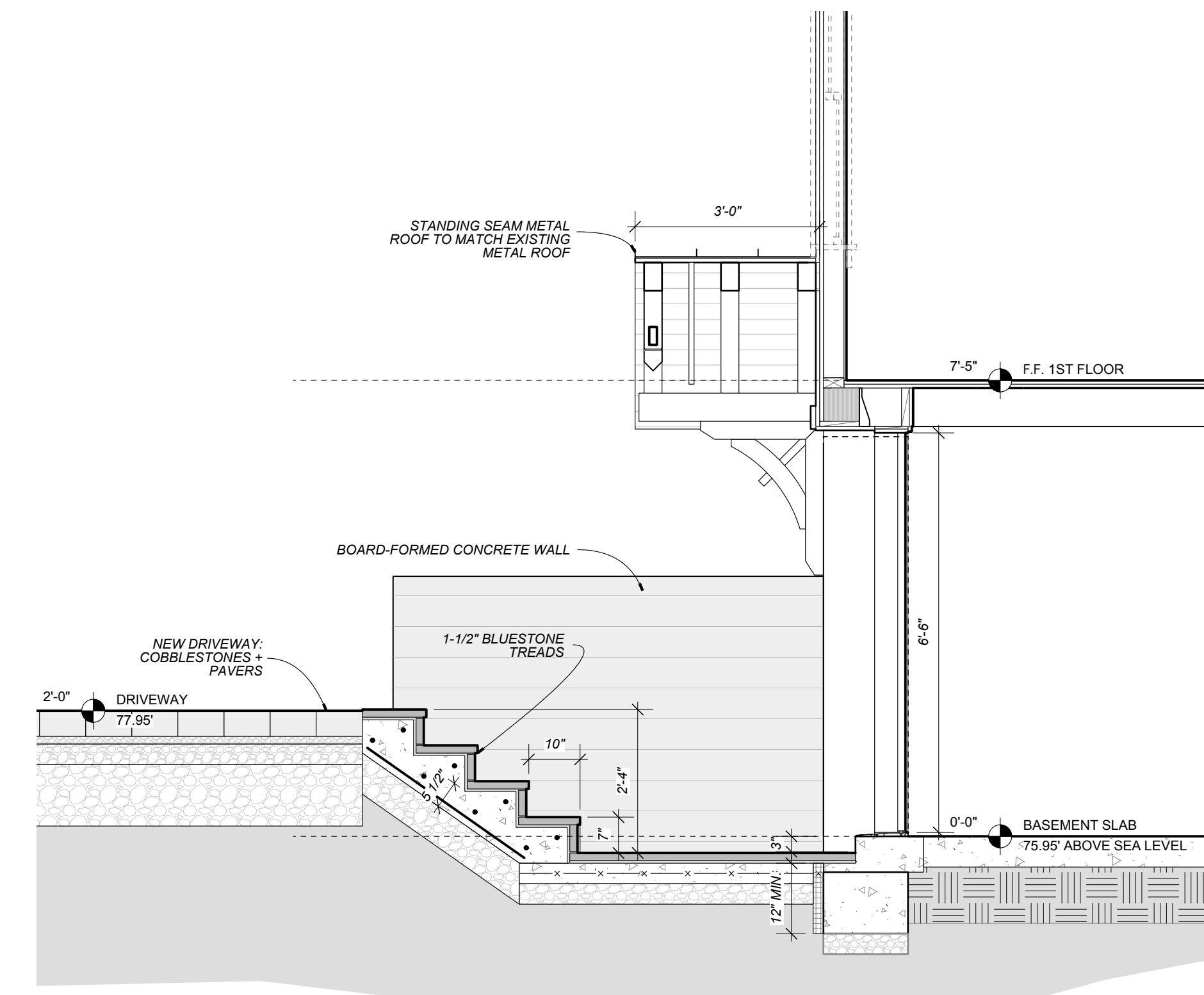
EXISTING CONDITIONS
H1



3
H2
ENLARGED ENTRY ELEVATION DETAIL
1/4" = 1'-0"



1
H2
EXISTING SOUTH ELEVATION
1/4" = 1'-0"



4
H2
SECTION THROUGH NEW ENTRY
1/4" = 1'-0"

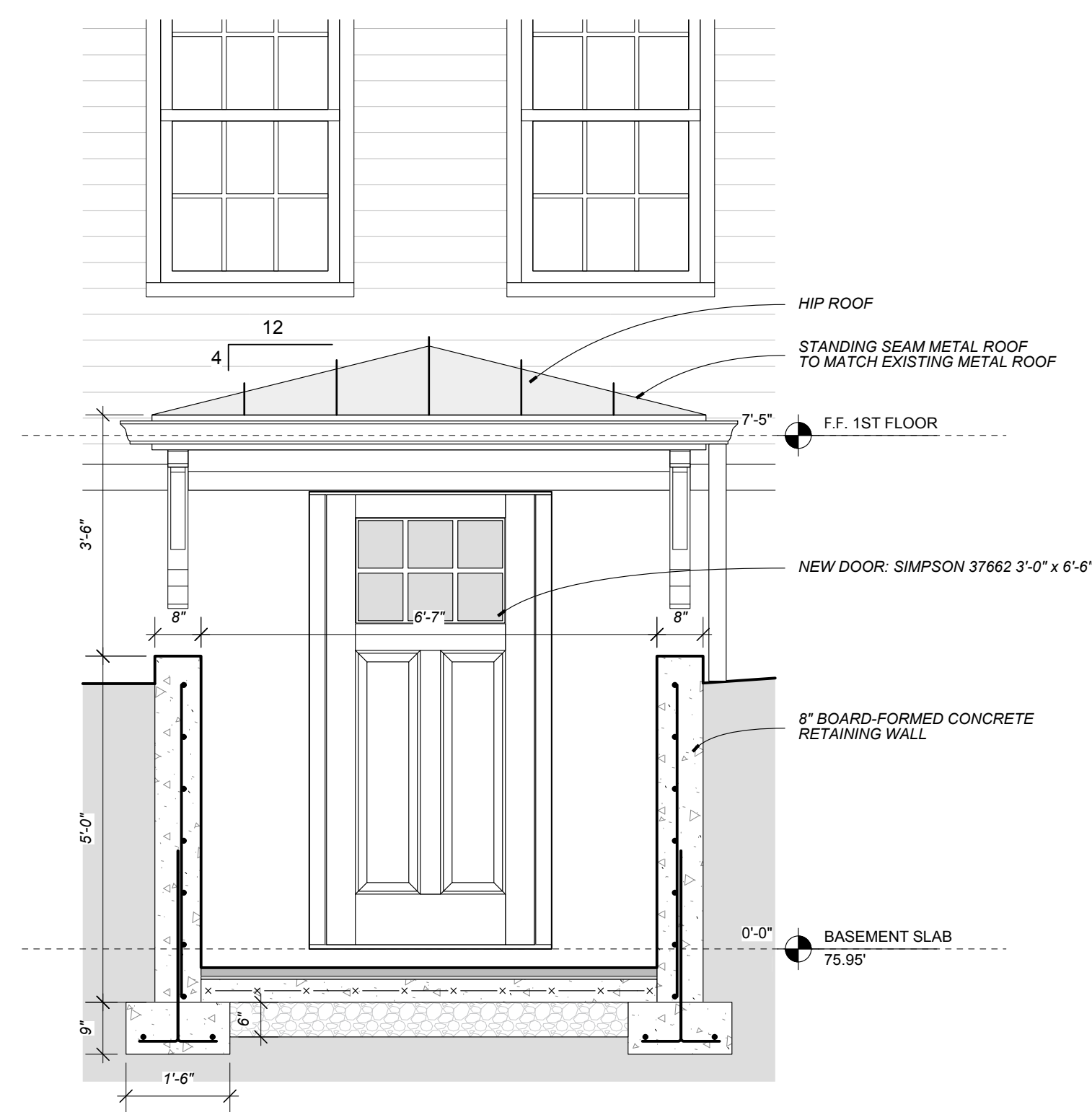


5
H2
PHOTO FROM EXISTING NORTH ELEVATION



2
H2
NEW SOUTH ELEVATION
1/4" = 1'-0"

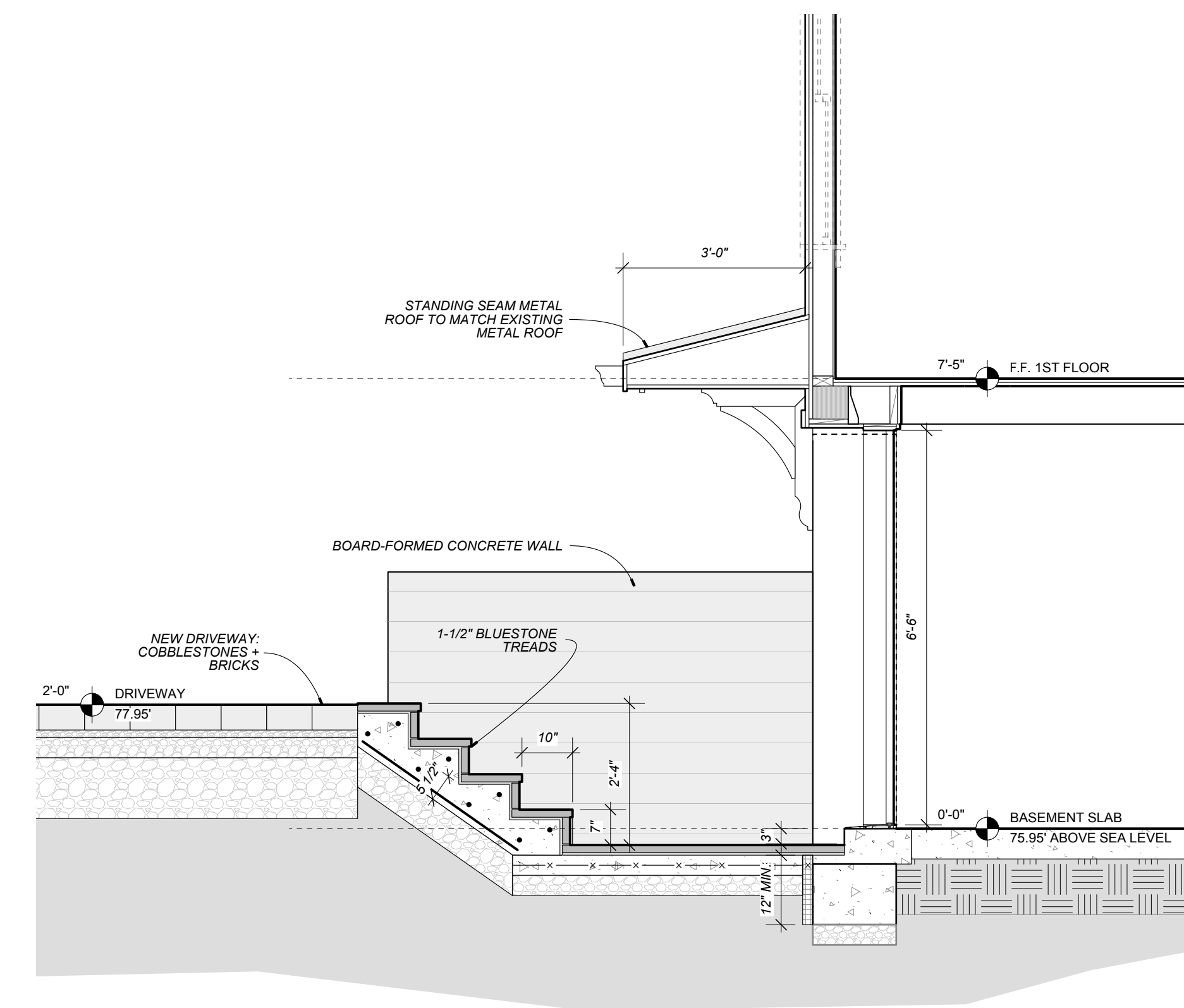
ENTRY CANOPY
3
H2



3
H3 ENLARGED ENTRY ELEVATION DETAIL
1/4" = 1'-0"



1
H3 EXISTING SOUTH ELEVATION
1/4" = 1'-0"



4
H3 SECTION THROUGH NEW ENTRY
1/4" = 1'-0"



2
H3 NEW SOUTH ELEVATION
1/4" = 1'-0"

ENDURACOLOR



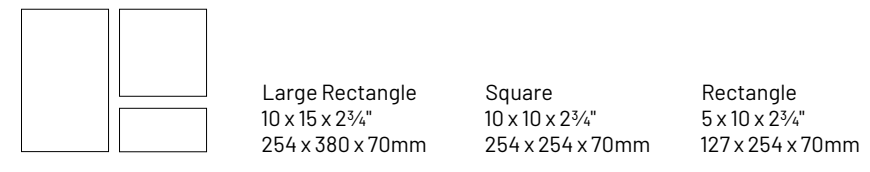
WESTPORT

Westport



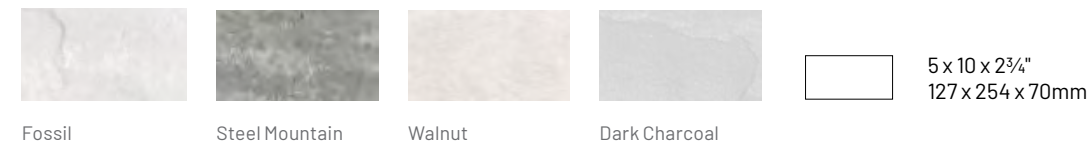
FOSSIL STEEL MOUNTAIN WALNUT DARK CHARCOAL
Rectangle Only

3 UNIT RANDOM BUNDLE DRIVE FRIENDLY



Large Rectangle 10 x 15 x 2 1/4" 254 x 380 x 70mm
Square 10 x 10 x 2 1/4" 254 x 254 x 70mm
Rectangle 5 x 10 x 2 1/4" 127 x 254 x 70mm

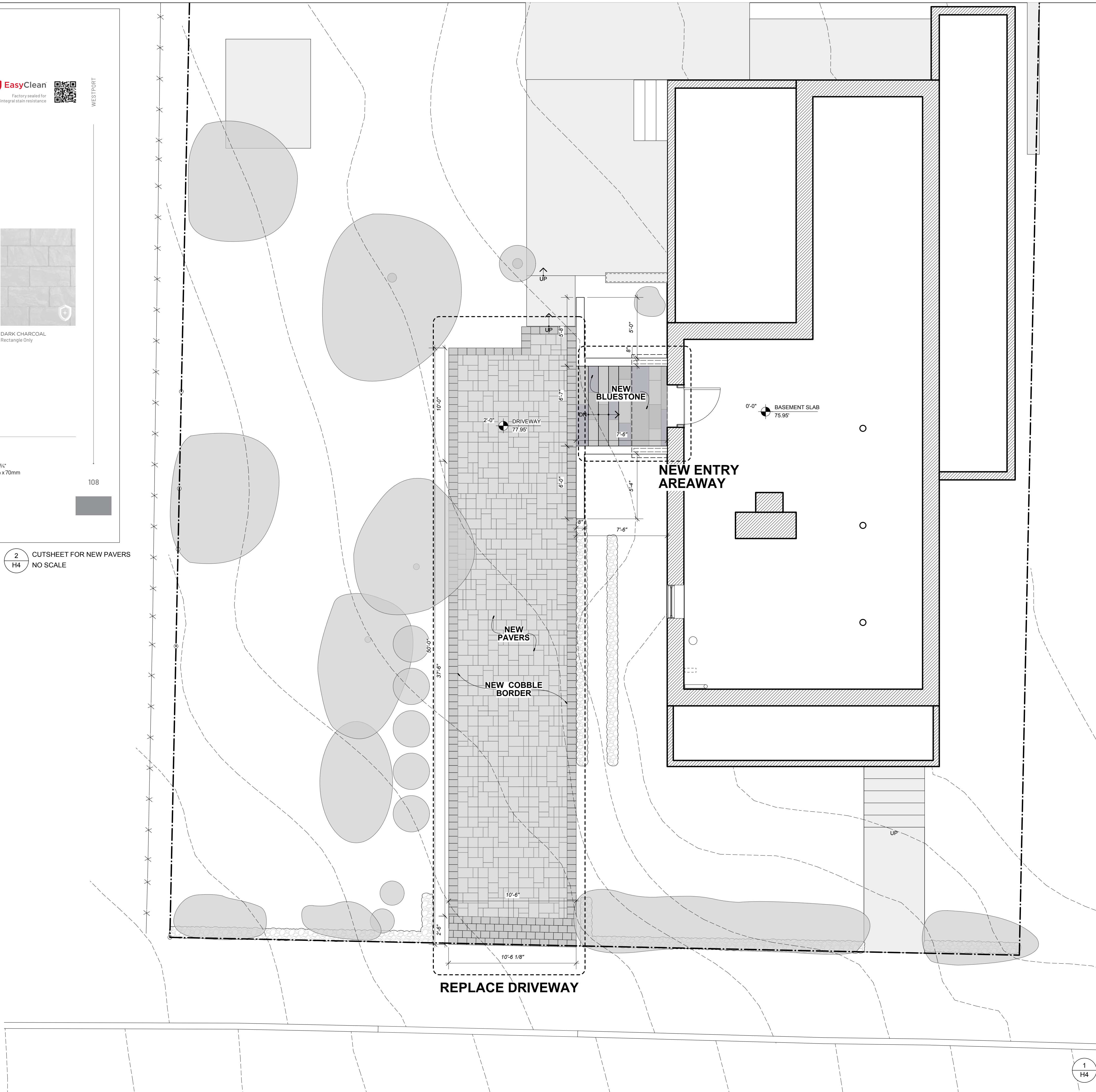
RECTANGLE SOLD SEPARATELY



Fossil Steel Mountain Walnut Dark Charcoal
5 x 10 x 2 1/4" 127 x 254 x 70mm

108

2 CUTSHEET FOR NEW PAVERS
H4 NO SCALE



1 SITE PLAN PROPOSED
H4 1/4" = 1'-0"

42 SPRING STREET
SITE WORK + NEW ENTRY
42 SPRING ST., SOMERVILLE MA 02143

Garth Goldstein Studio, Inc.
490 Broadway • suite 4 • somerville, ma 02145
garth@ggs-studio.com • 617 308 3094

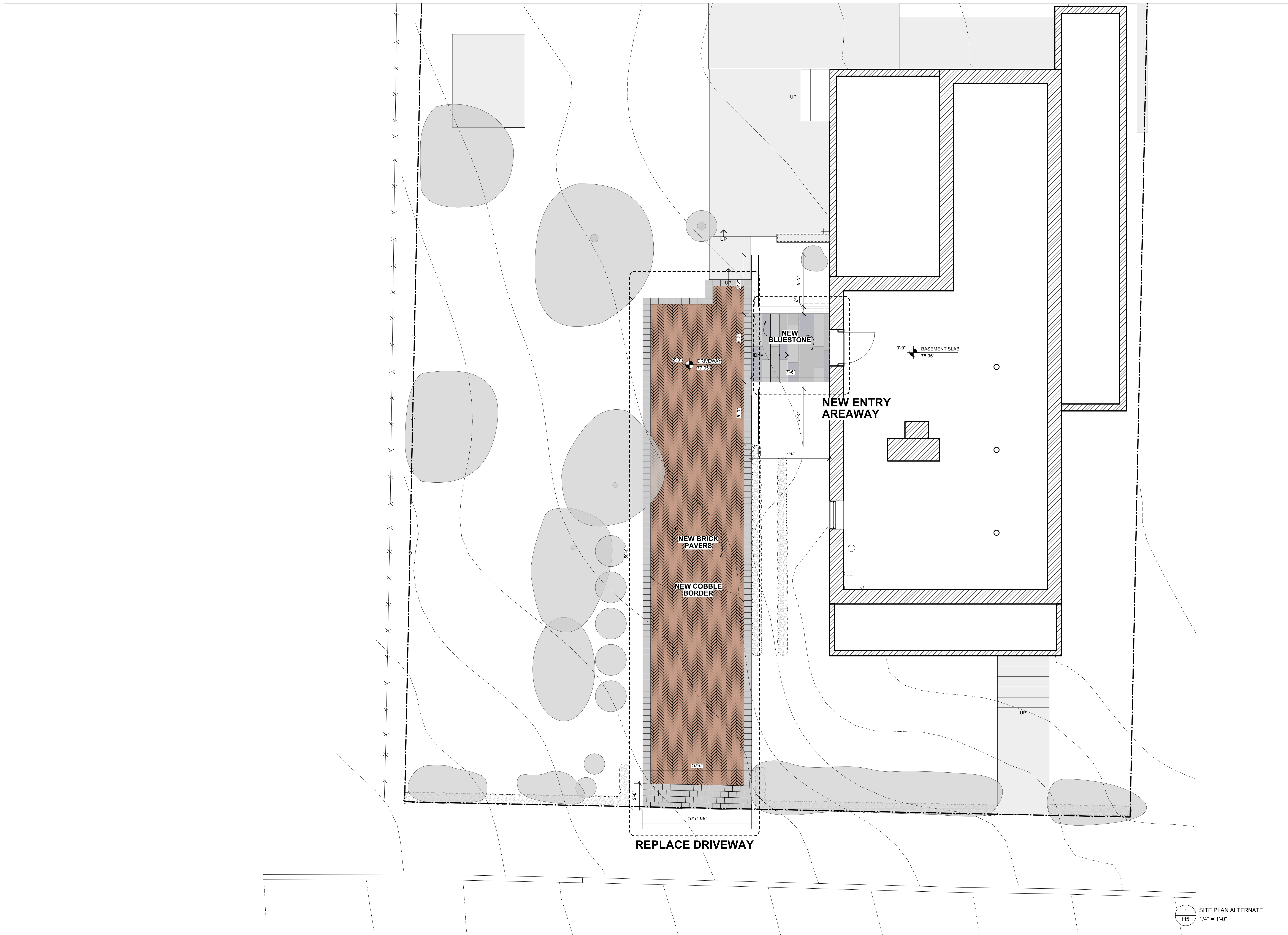
Civil Engineer
BOSTON OFFICE
BOSTON, MA 02127 #202
413.281.6615

Structural Engineer
COWEN ASSOCIATES
NATICK, MA 01760
508.655.3876

HISTORIC REVIEW 3-31-26
ISSUED FOR NO. DATE

HISTORICAL - NEW DRIVEWAY

H4



42 SPRING STREET
SITE WORK + NEW ENTRY
 42 SPRING ST., SOMERVILLE MA 02143

Garth Goldstein Studio, Inc.
 490 Broadway • suite 4 • somerville, ma 02145
 garth@ggs-studio.com • 617 308 3094

Civil Engineer
 BOSTON OFFICE
 100 STATE STREET #202
 BOSTON, MA 02127
 413.281.6615

Structural Engineer
 COWIEN ASSOCIATES
 100 STATE STREET #202
 NATICK, MA 01760
 508.655.3876

HISTORIC REVIEW 3-31-26
 ISSUED FOR NO. DATE

HISTORICAL -
 ALTERNATE DRIVEWAY
H5

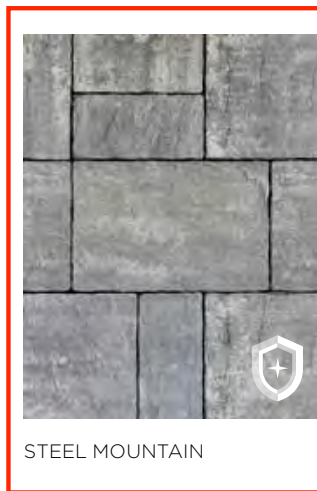
1 SITE PLAN ALTERNATE
 H5 1/4" = 1'-0"



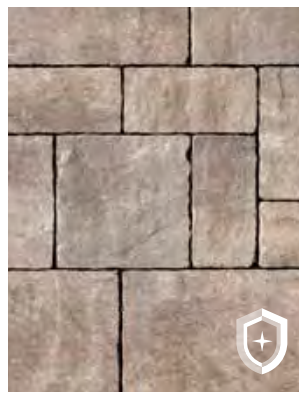
Westport®



FOSSIL



STEEL MOUNTAIN

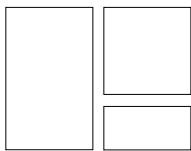


WALNUT



DARK CHARCOAL
Rectangle Only

3 UNIT RANDOM BUNDLE DRIVE FRIENDLY



Large Rectangle
10 x 15 x 2¾"
254 x 380 x 70mm

Square
10 x 10 x 2¾"
254 x 254 x 70mm

Rectangle
5 x 10 x 2¾"
127 x 254 x 70mm

RECTANGLE SOLD SEPARATELY



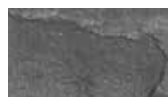
Fossil



Steel Mountain



Walnut



Dark Charcoal



5 x 10 x 2¾"
127 x 254 x 70mm



77662 NANTUCKET

The door you have selected is available with almost unlimited personalization options. For example, you can order this door in any type of wood and any size and change virtually any detail. To make this door even more "you," Personalize Your Door below.

DOOR SPECIFICATIONS (AS SHOWN):

Wood Species: Fir

Glass: Clear

Profile: Ovolo Sticking

Panel Type: 3/4" FP

Rough opening needs to be 2" wider and 2 1/2" taller than your door.

Get a Quote



View on my Home



Print



Where to Buy



Guided Tour



Nantucket Visualizer



Exterior Door Selection Guide

PERSONALIZE YOUR DOOR

Make Your Selections on the Left and See Your Door on the Right

77662

FINALIZE MY QUOTE

(DOOR ONLY) MSRP PER DOOR: \$3,275.08

Use my location to provide accurate pricing

STANDARD OPTIONS

Quantity: 1 Change Quantity

Change Door Shape

No Face-Pin Option? Yes No [view more](#)

Wood Species:

Original Slab Width: Feet: 3, Inches: 0, Fraction: 0 [view more](#)

Original Slab Height: Feet: 6, Inches: 8, Fraction: 0 [view more](#)

Thickness:

IG Glass, Option 1: [view more](#)

Add Low-E: Yes No

Sticking Profile:

Bar Type: [view more](#)

Panel Type:

Groove Type:

Stile Width: [view more](#)

