

Section 6.0 **Landscape Plans**

Existing Tree Removal Plan

Existing Tree Inventory

Tree Conflict Diagram

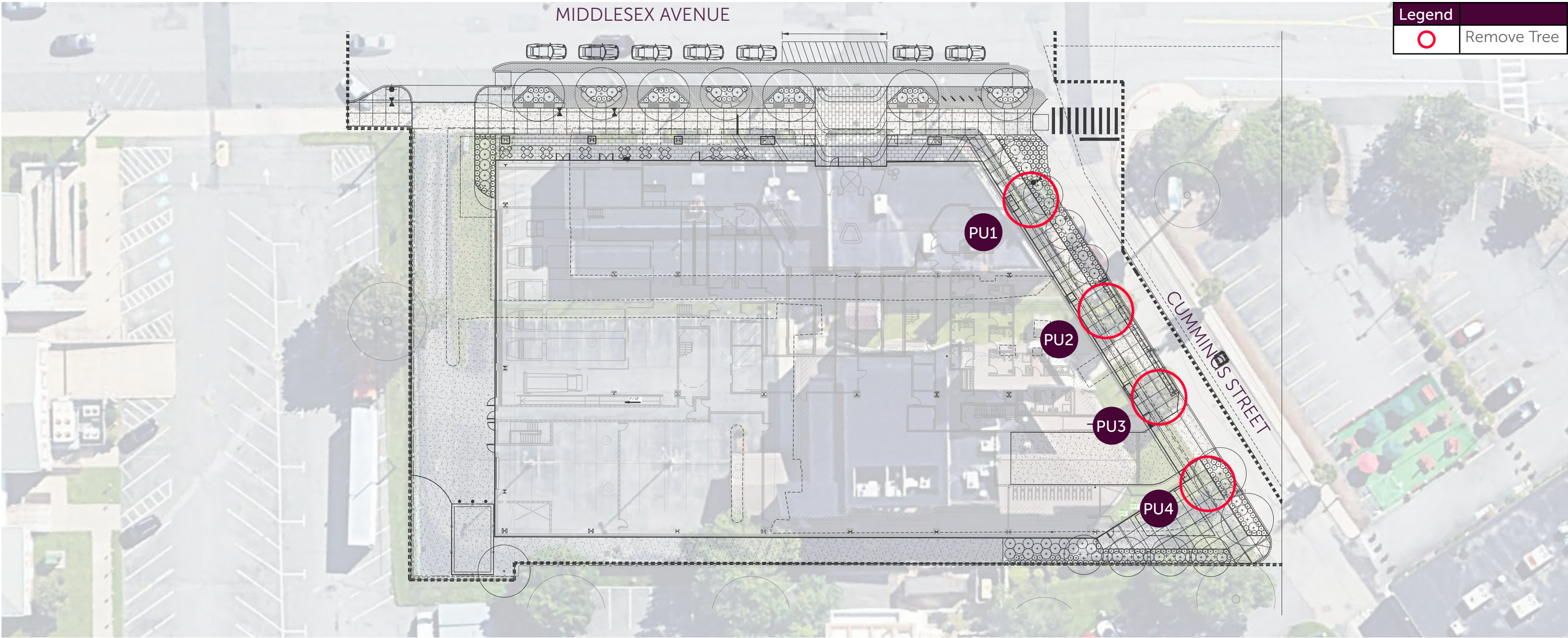
Proposed Tree Plan

Proposed Tree Inventory

Green Score Calculation

Planting Plan

EXISTING TREE REMOVAL PLAN



Reference	Botanical	Common	DBH	Condition	Land	Proposed	Reason	Comment
PU1	Acer x freemanii	Freeman Maple	12"	Poor	Public	Remove	Will be damaged during construction	
PU2	Acer x freemanii	Freeman Maple	12"	Good	Public	Remove	Will be damaged during construction	
PU3	Acer x freemanii	Freeman Maple	12"	Good	Public	Remove	Will be damaged during construction	
PU4	Acer x freemanii	Freeman Maple	10"	Good	Public	Remove	Will be damaged during construction	

SUMMARY:

- 4 existing public street trees to be removed totalling ~46" DBH due to conflicts with proposed design



EXISTING TREE INVENTORY



TREE PU1: 12" DBH FREEMAN MAPLE
FAIR CONDITION



TREE PU2: 12" DBH FREEMAN MAPLE
GOOD CONDITION






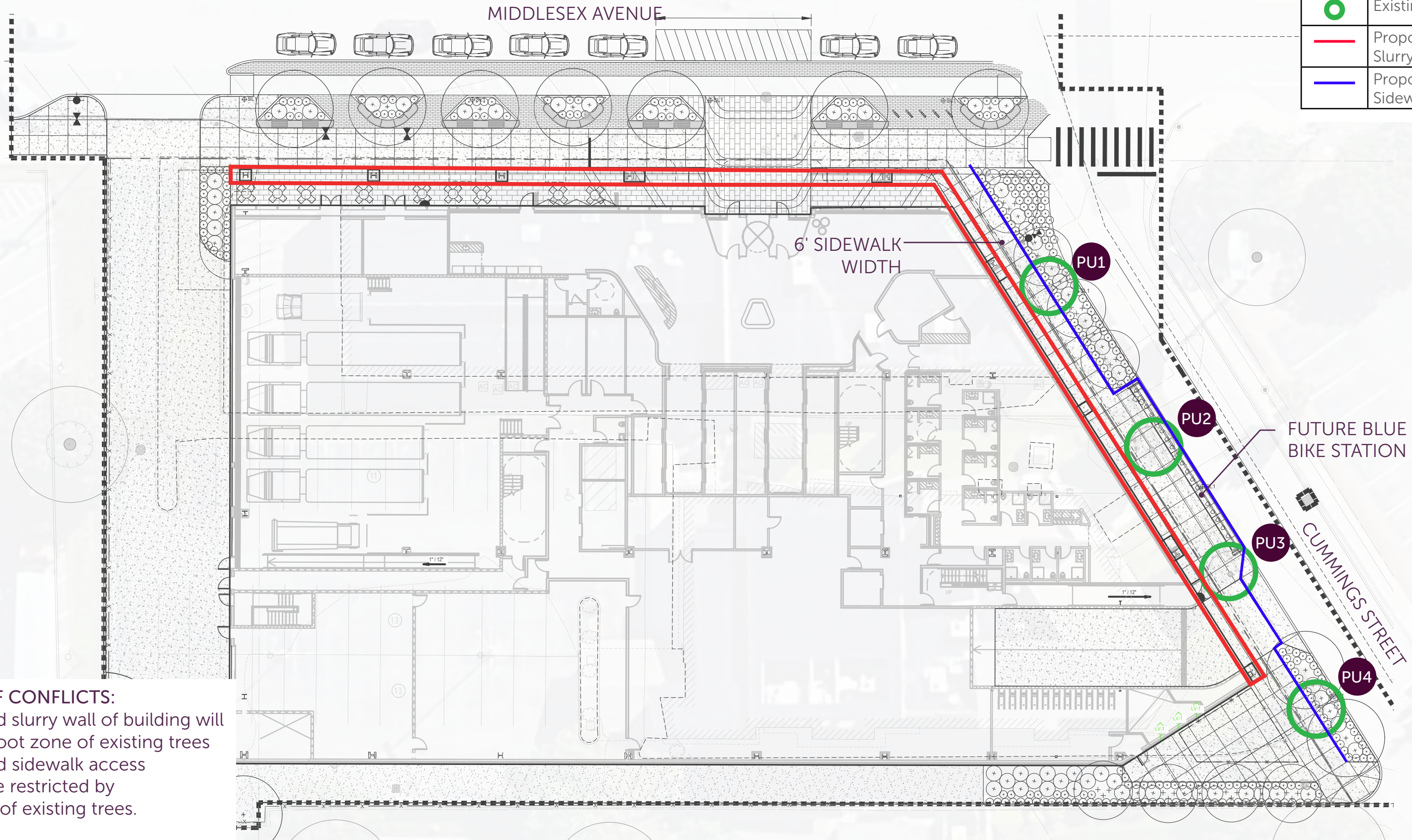
TREE PU3: 12" DBH FREEMAN MAPLE
GOOD CONDITION



TREE PU4: 10" DBH FREEMAN MAPLE
GOOD CONDITION

TREE CONFLICT DIAGRAM

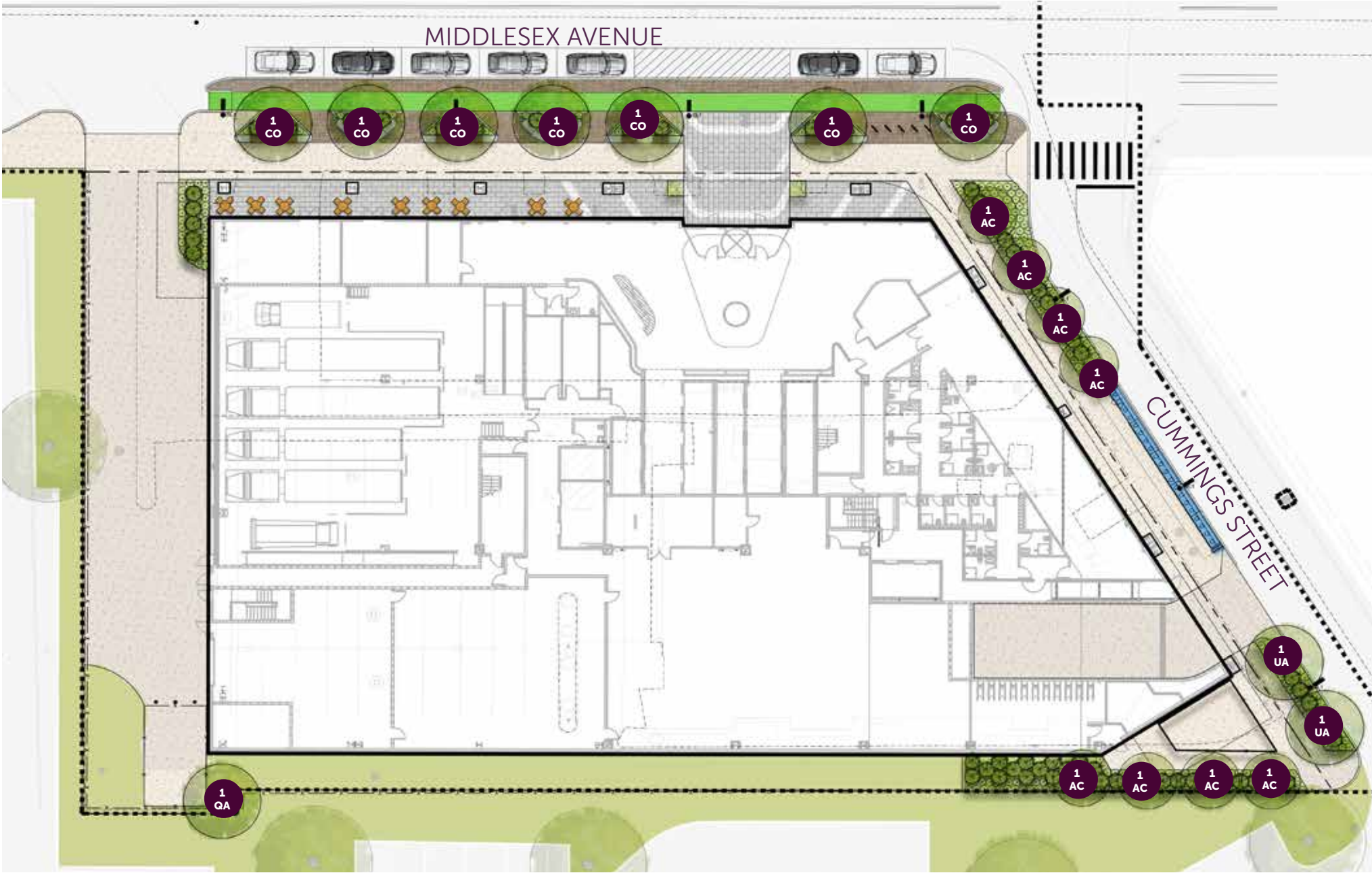
Legend	
	Existing Tree
	Proposed Slurry Wall
	Proposed Sidewalk



- NATURE OF CONFLICTS:**
- Proposed slurry wall of building will impact root zone of existing trees
 - Proposed sidewalk access would be restricted by location of existing trees.



PROPOSED TREE PLAN



SUMMARY:

- 11 specimen trees are proposed on site to help with wind mitigation as well as shade canopy in the public realm
- 8 ornamental trees are proposed to help mitigate views of utilities and soften the streetscape
- 46" DBH total of removed trees will be replaced by 55" DBH total of proposed trees

Key	Quantity	Botanical	Common	Size	Root	Comment
AC	8	Amalanchier canadensis	Canadian Serviceberry	2-2.5" Cal.	B&B	Ornamental
CO	7	Celtis occidentalis	Hackberry	4-4.5" Cal.	B&B	
QA	1	Quercus acutissima	Sawtooth Oak	3-3.5" Cal.	B&B	Marcescent
UA	2	Ulmus americana 'Jefferson'	Jefferson American Elm	4-4.5" Cal.	B&B	



PROPOSED TREE INVENTORY



AMELANCHIER CANADENSIS



CELTIS OCCIDENTALIS



QUERCUS ACUTISSIMA



ULMUS AMERICANA 'JEFFERSON'

Somerville Green Score - 120 Middlesex

DIRECTIONS:

1. Enter the Lot Area in square feet to the right >>>

2. Enter the area in square feet or the number of landscape elements

Area or Number

44,995

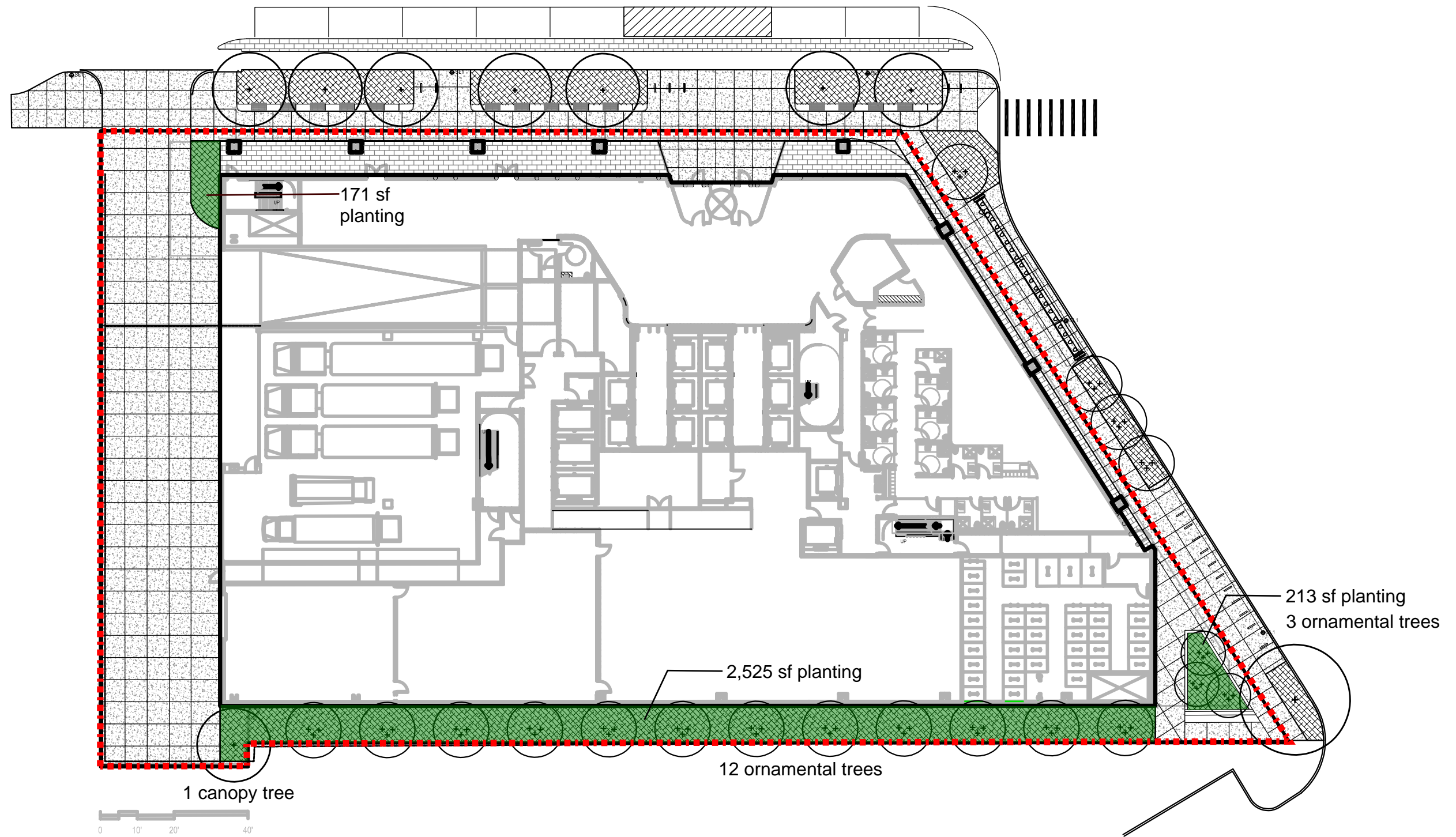
	Area or Number	Sq Ft Credit	Multiplier	Weighted Area	Score Value	% of Score
Soils						
Landscaped area with a soil depth less than 24 inches (enter square feet) w/BONUS CREDIT - De-paved Lot Area	2,909	actual sq ft	0.4	1163.6	0.026	37%
Landscaped area with a soil depth equal to or greater than 24 inches (enter square feet)	0	actual sq ft	0.6	0	0.000	0%
Pervious Paving with 6 to 24 inches of subsurface soil or gravel (enter square feet)	0	actual sq ft	0.2	0	0.000	0%
Pervious Paving with more than 24 inches of subsurface soil or gravel (enter square feet)	0	actual sq ft	0.5	0	0.000	0%
Groundcovers						
Turf grass, mulch, and inorganic surfacing materials (enter square feet)	0	actual sq ft	0.1	0	0.000	0%
Plants						
Vegetation less than two (2) feet tall at maturity (enter square feet) w/BONUS CREDITS - Native Species, De-paved Lot Area	2,525	actual sq ft	0.4	1010	0.022	32%
Vegetation less than two (2) feet tall at maturity (enter square feet) w/BONUS CREDITS - Native Species, Public Visibility	213	actual sq ft	0.4	85.2	0.002	3%
Vegetation at least two (2) feet tall at maturity (enter number of individual plants) w/BONUS CREDITS - Native Species, Public Visibility	4	12	0.5	24	0.001	1%
Trees						
Small Tree (enter number of trees) w/BONUS CREDITS - Native Species, Public Visibility	3	50	0.8	120	0.003	4%
Small Tree (enter number of trees) w/BONUS CREDIT - Native Species	12	50	0.7	420	0.009	13%
Large Tree (enter number of trees) w/BONUS CREDITS Native Species, High Value	1	450	0.8	360	0.008	11%
Preserved Tree (enter DBH)	0	65	0.8	0	0.000	0%
Engineered Landscape						
Vegetated Wall (enter square feet)	0	actual sq ft	0.1	0	0.000	0%
Rain gardens, bioswales, and stormwater planters (enter square feet)	0	actual sq ft	1.0	0	0.000	0%
Green Roof with up to 6" of growth medium (enter square feet)	0	actual sq ft	0.1	0	0.000	0%
Green Roof with 6"-10" of growth medium (enter square feet)	0	actual sq ft	0.4	0	0.000	0%
Green Roof of 10"-24" growth medium (enter square feet)	0	actual sq ft	0.6	0	0.000	0%
Green Roof of over 24" growth medium	N/A	Calculate as if soils, groundcovers, plants, and trees				N/A

Add to multiplier

Possible Bonuses	
Publicly Visible Landscape	0.1
Native Species	0.1
High Value Species	0.1
50% Irrigation from storm water	0.1
Food cultivation	0.1
De-paved lot area	0.1

Green Score = 0.071

	Green Score District Requirements			
	NR & UR	MR3 & MR4	MR5, MR6, & HR	FAB, CC, CB, CI
Required Score:	0.35	0.25	0.20	0.20
Target Score:	0.40	0.3	0.25	-
Actual Green Score:	0.071	0.071	0.071	0.071

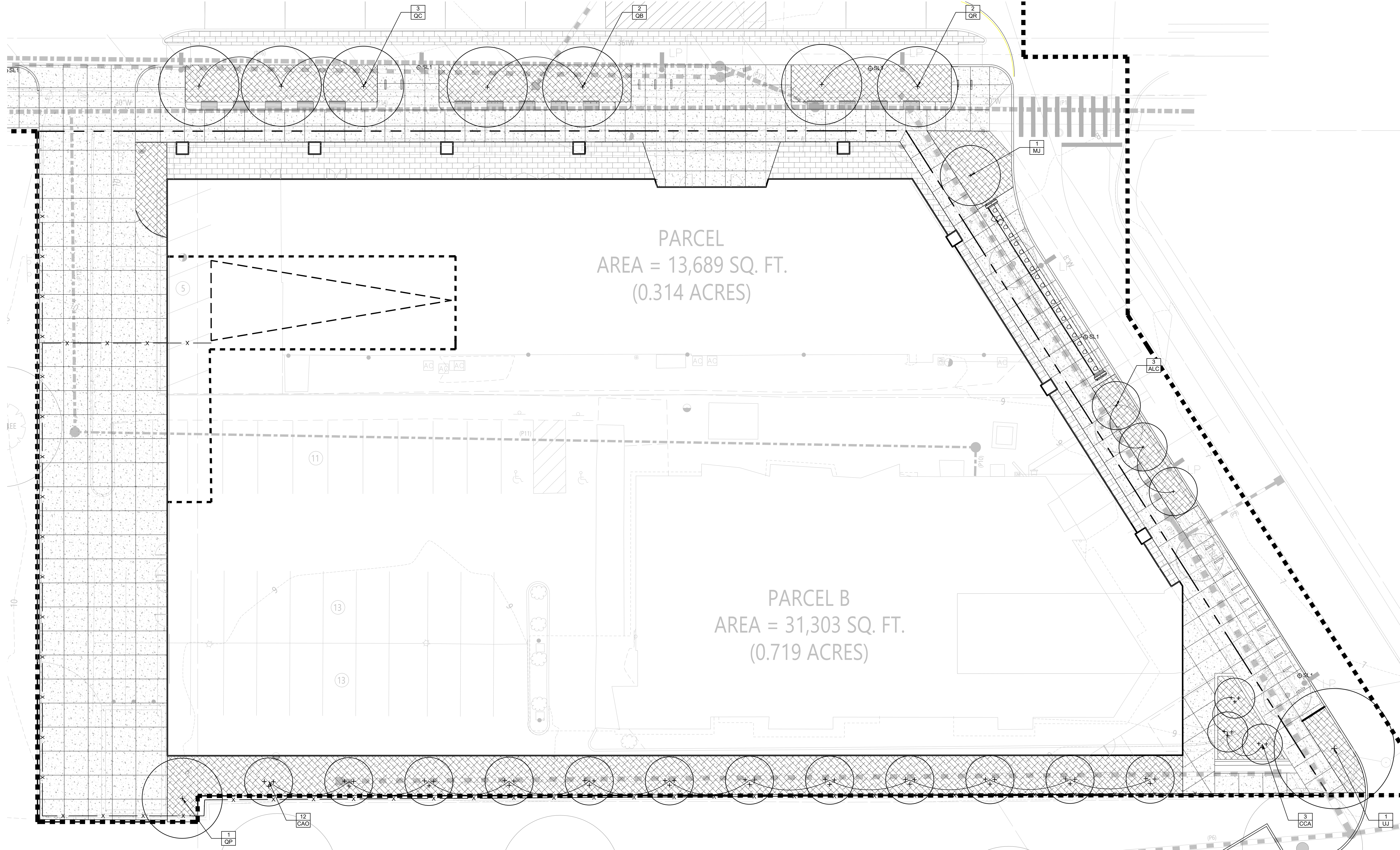
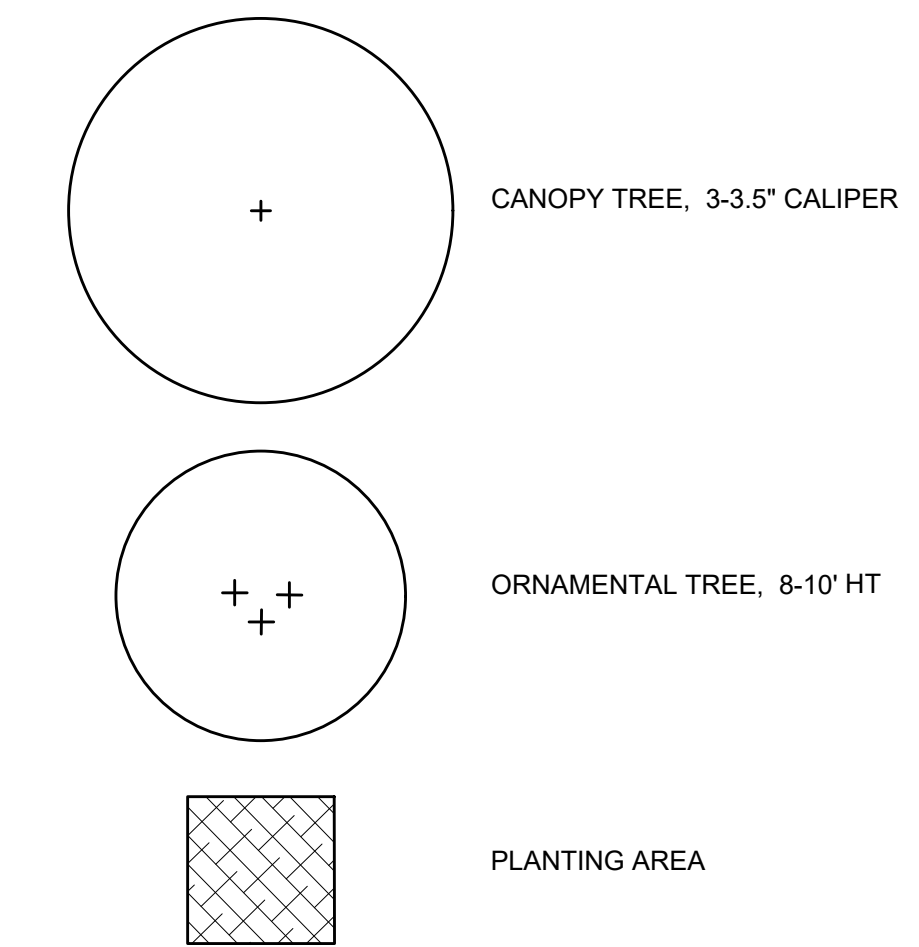


PLANTING SCHEDULE

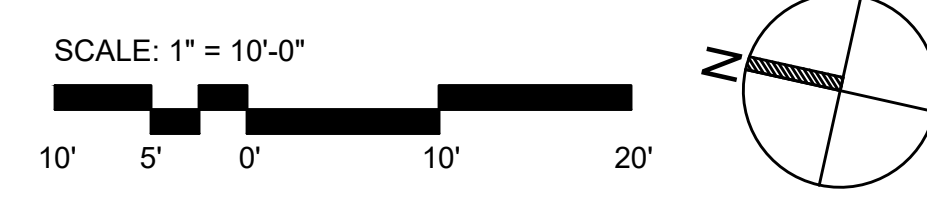
SYM	QTY	SCIENTIFIC NAME	COMMON NAME	SIZE	SPACING	COMMENTS
DECIDUOUS TREES						
CAO	12	Carpinus caroliniana	American Hornbeam	10'-12" Ht.	AS SHOWN	B&B, multi-stem, 3-4 evenly-sized main trunks, full branches
QB	2	Quercus bicolor	Swamp White Oak	3'-3.5' cal.	AS SHOWN	B&B, single stem, matched, straight central leader, full branches, limb to 7'
QC	3	Quercus cocinea	Scarlet Oak	3'-3.5' cal.	AS SHOWN	B&B, single stem, matched, straight central leader, full branches, limb to 7'
QP	1	Quercus palustris	Pin Oak	3'-3.5' cal.	AS SHOWN	B&B, single stem, matched, straight central leader, full branches, limb to 7'
QR	2	Quercus rubra	Red Oak	3'-3.5' cal.	AS SHOWN	B&B, single stem, matched, straight central leader, full branches, limb to 7'
UJ	1	Ulmus americana 'Jefferson'	Jefferson American Elm	3'-3-1/2" Cal.	AS SHOWN	B&B, single stem, matched, straight central leader, full branches, limb to 7'
ORNAMENTAL TREES						
ALC	3	Amelanchier laevis 'Cumulus'	Cumulus Allegheny Serviceberry	2.5'-3' cal.		B&B, single stem, matched, straight central leader, full branches, limb to 6'
CCA	3	Cercis canadensis	Eastern Redbud Multi-Stem	8'-10' Ht.	AS SHOWN	B&B, multi-stem, 3-4 evenly-sized main trunks, full branches
MJ	1	Magnolia virginiana 'Jim Wilson'	Moonlight® Sweetbay Magnolia	2-1/2'-3' Cal.	AS SHOWN	B&B, single stem, matched, straight central leader, full branches, limb to 6'

SYM	SCIENTIFIC NAME	COMMON NAME	SIZE	SPACING	COMMENTS
SHRUBS					
CAH	Clethra alnifolia 'Hummingbird'	Hummingbird Summersweet	#3 cont., 24" ht. min.	30" O.C.	full and rounded, staggered rows
CSA	Cornus sericea 'Arctic Fire'	Arctic Fire Red Twig Dogwood	#3 cont., 24" ht. min.	48" O.C.	full and rounded, staggered rows
DG	Deutzia gracilis	Slender Deutzia	#3 cont., 24" ht. min.	36" O.C.	full and rounded, staggered rows
DL	Diervilla lonicera	Bush Honeysuckle	#3 cont., 18" ht. min.	30" O.C.	full and rounded, staggered rows
FGA	Fothergilla gardenii	Dwarf Fothergilla	#3 cont., 18" ht. min.	30" O.C.	full and rounded, staggered rows
IGS	Ilex glabra 'Shamrock'	Shamrock Inkberry Holly	#3 cont., 24" ht. min.	30" O.C.	full and rounded, staggered rows
IVH	Itea virginica 'Henry's Garnet'	Henry's Garnet Sweetspire	#3 cont., 30" ht. min.	30" O.C.	full and rounded, staggered rows
ORNAMENTAL GRASSES					
CAP	Carex appalachica	Appalachian Sedge	#2 cont.	12" O.C.	staggered rows
ES	Eragrostis spectabilis	Purple Lovegrass	#3 cont.	18" O.C.	staggered rows
LSP	Liriope spicata	Creeping Lilyturf	#2 cont.	9" O.C.	staggered rows
PVS	Panicum virgatum 'Shenandoah'	Shenandoah Switchgrass	#2 cont.	24" O.C.	staggered rows
SSC	Schizachyrium scoparium	Little Bluestem	#2 cont.	18" O.C.	STAGGERED ROWS
SHE	Sporobolus heterolepis	Prairie Dropseed	#2 cont.	24" O.C.	staggered rows
PERENNIALS					
ACA	Anemone canadensis	Canadian Anemone	#2 cont.	18" O.C.	staggered rows
AOO	Aster oblongifolius 'October Skies'	October Skies Fall Aster	#2 cont.	18" O.C.	staggered rows
AXB	Astilbe x arendsii 'Bridal Veil'	Bridal Veil Astilbe	#2 cont.	15" O.C.	staggered rows
EPM	Echinacea purpurea 'Magnus'	Magnus Purple Coneflower	#2 cont.	18" O.C.	staggered rows
GR	Geranium x 'Rozanne'	Rozanne Cranesbill	#2 cont.	18" O.C.	staggered rows
HAB	Heuchera x 'Autumn Birdie'	Coral Bells	#1 cont.	18" O.C.	staggered rows
RFQ	Rudbeckia fulgida 'Goldsturm'	Goldsturm Coneflower	#2 cont.	12" O.C.	staggered rows
SNC	Salvia nemorosa 'Caradonna'	Caradonna Meadow Sage	#2 cont.	12" O.C.	staggered rows

PLANTING LEGEND



1 PLANTING PLAN



Perkins & Will

225 Franklin Street, Suite 1100
Boston, MA 02110
(617) 478-0300
www.perkinswill.com

CONSULTANTS

CIVIL
Beals+Thomas, Inc.
144 Turnpike Road, Southborough, MA 01772

STRUCTURAL
Thornton Tomasetti
27 Wormwood Street, Suite 200, Boston, MA 02210

MECHANICAL/ELECTRICAL/PLUMBING
BR+A Consulting Engineers
10 Guest Street, 4th Floor, Boston, MA 02135

LANDSCAPING
Copley Wolff
10 Post Office Square, Suite 1315, Boston, MA 02109

ENVELOPE
Simpson Gumpertz & Heger
480 Totten Pond Road, Waltham, MA 02451

LIFE SAFETY
Code Red Consultants, LLC
154 Turnpike Road, Suite 200, Southborough, MA 01772

LIGHTING
Horton Lees Brogden
233 Lewis Wharf, Boston, MA 02110

SUSTAINABILITY
The Green Engineer, Inc.
23 Bradford St., Concord, MA 01742

VERTICAL TRANSPORTATION / FACADE MAINTENANCE
Lerch Bates, Inc.
303 Wyman Street, Suite 351, Waltham, MA 02451

ACOUSTICAL
Acenitech
33 Moulton Street, Cambridge, MA 02138

PARKING
Desman Associates
18 Tremont Street, Suite 300, Boston, MA 02108

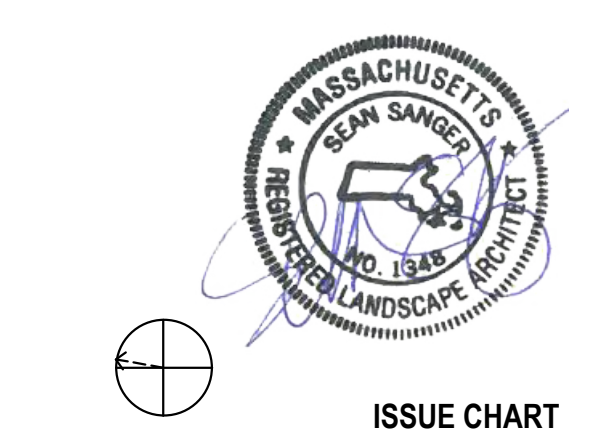
CONTRACTOR
John Moriarty & Associates
3 Church Street, #2, Winchester, MA 01890

PROJECT

120 MIDDLESEX
SOMERVILLE, MA 02145

DIVCOWEST
181 Morgan Avenue, Floor 2
Cambridge, MA 02141

KEYPLAN



ISSUE CHART

NO.	DATE	DESCRIPTION
1	2026.03.23	SITE PLAN APPROVAL
2		
3		
4		
5		
6		
7		
8		
9		
10		
11		
12		
13		
14		
15		
16		
17		
18		
19		
20		

PLANTING PLAN

SHEET NUMBER

L2-00

26/2026 7:38:22 AM Autodesk Docs://D:\work\120M\MIDDLESEX\DIVCO-120M\ARCH-DIVCO-120M\Concepts\1.rvt