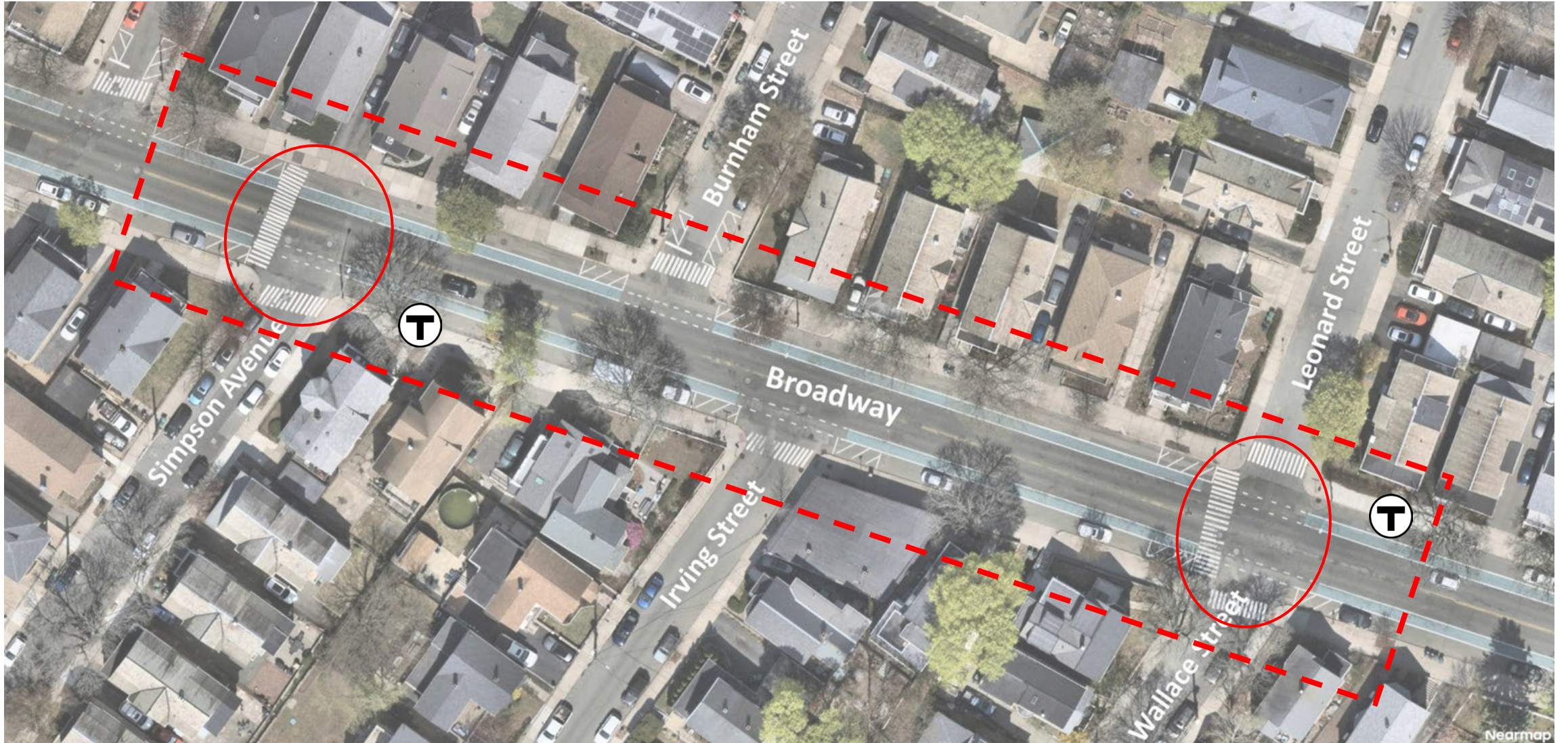


# Broadway at Wallace Street & Simpson Avenue Quick-Build Safety Improvements

4/9/26

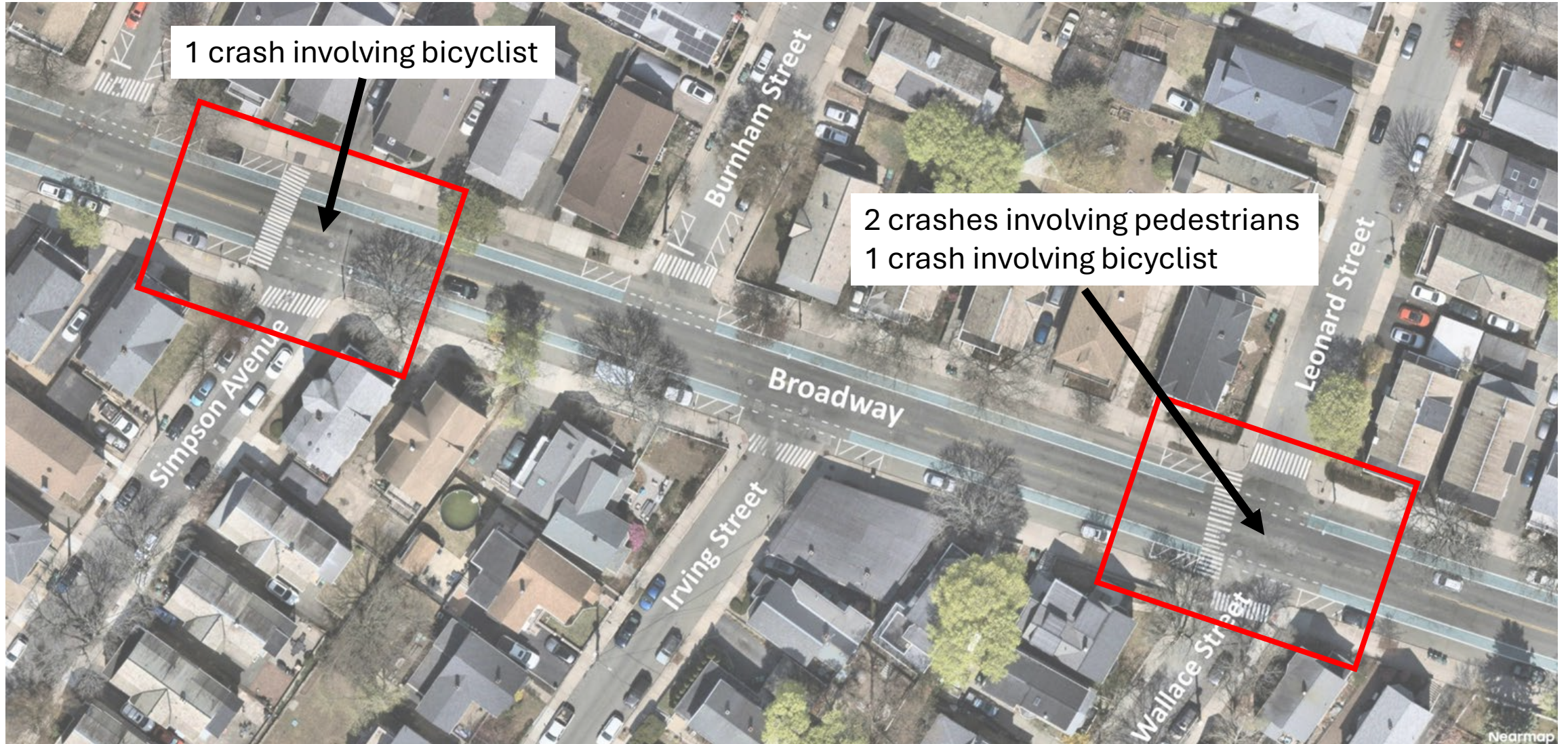
# Project Area



# Community Feedback

- **Community members have expressed feeling unsafe crossing the street at the intersections of Broadway & Wallace Street/Leonard Street and Broadway & Simpson Avenue**
  - Vehicles are speeding and not yielding to pedestrians in the crosswalks
  - Vehicles are taking frequent and fast turns from Broadway onto side streets
  - It is difficult for pedestrians to see oncoming traffic because parked vehicles are blocking sightlines
  - Vehicles are using the Broadway @ Leonard Street bus stop to pass other vehicles that have stopped for pedestrians or are waiting to take a left turn
- The project was informed by community feedback received through the Mobility Division's general engagement channels and at two project-specific outreach pop-ups at these intersections in October 2025

# Crash History (2020-2024)



# Representative Vehicle Speeds\*



\*85<sup>th</sup> percentile speeds

# Vehicle Volumes: 7am-7pm



# Vehicle Volumes: AM Peak Hour

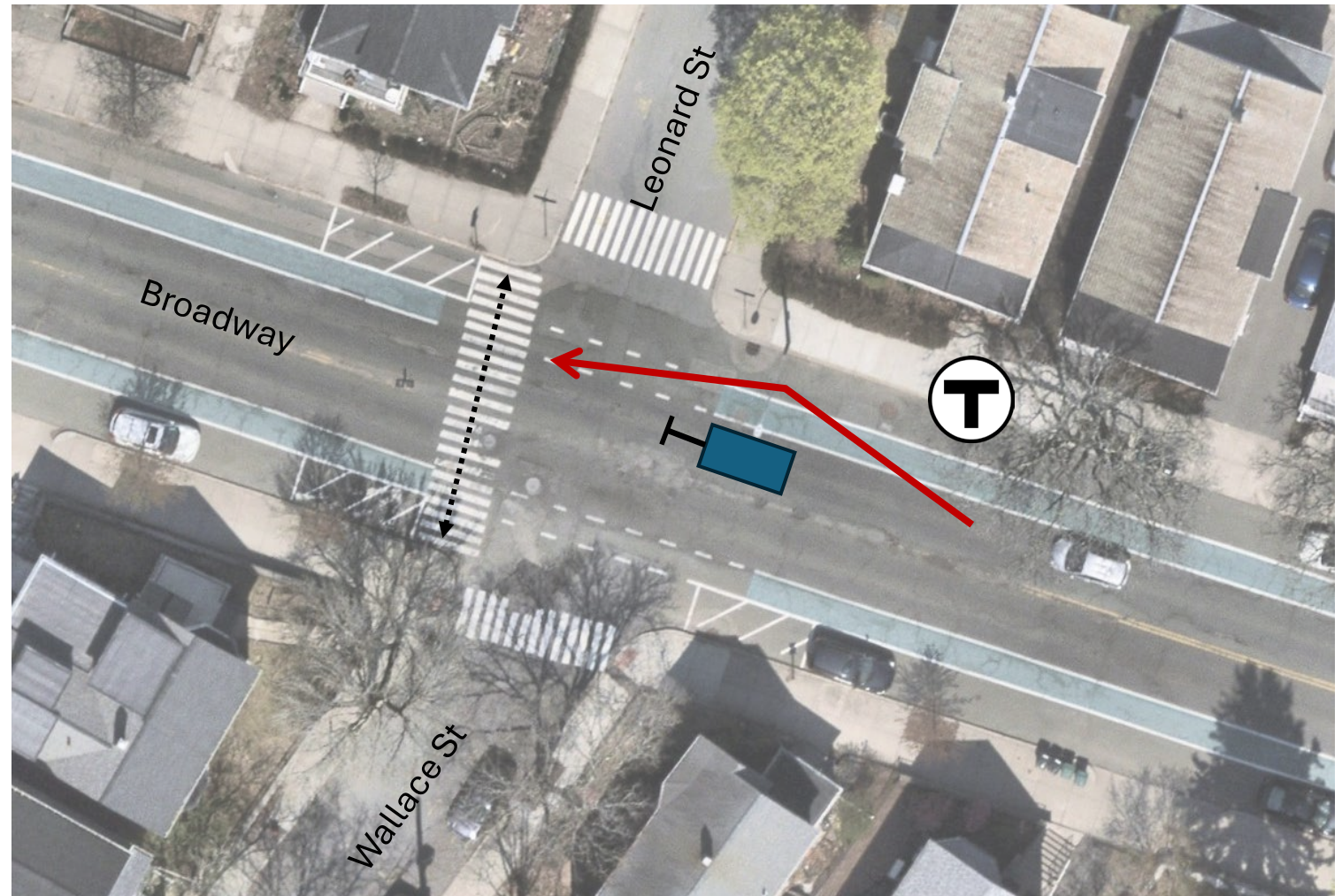


# Vehicle Yielding

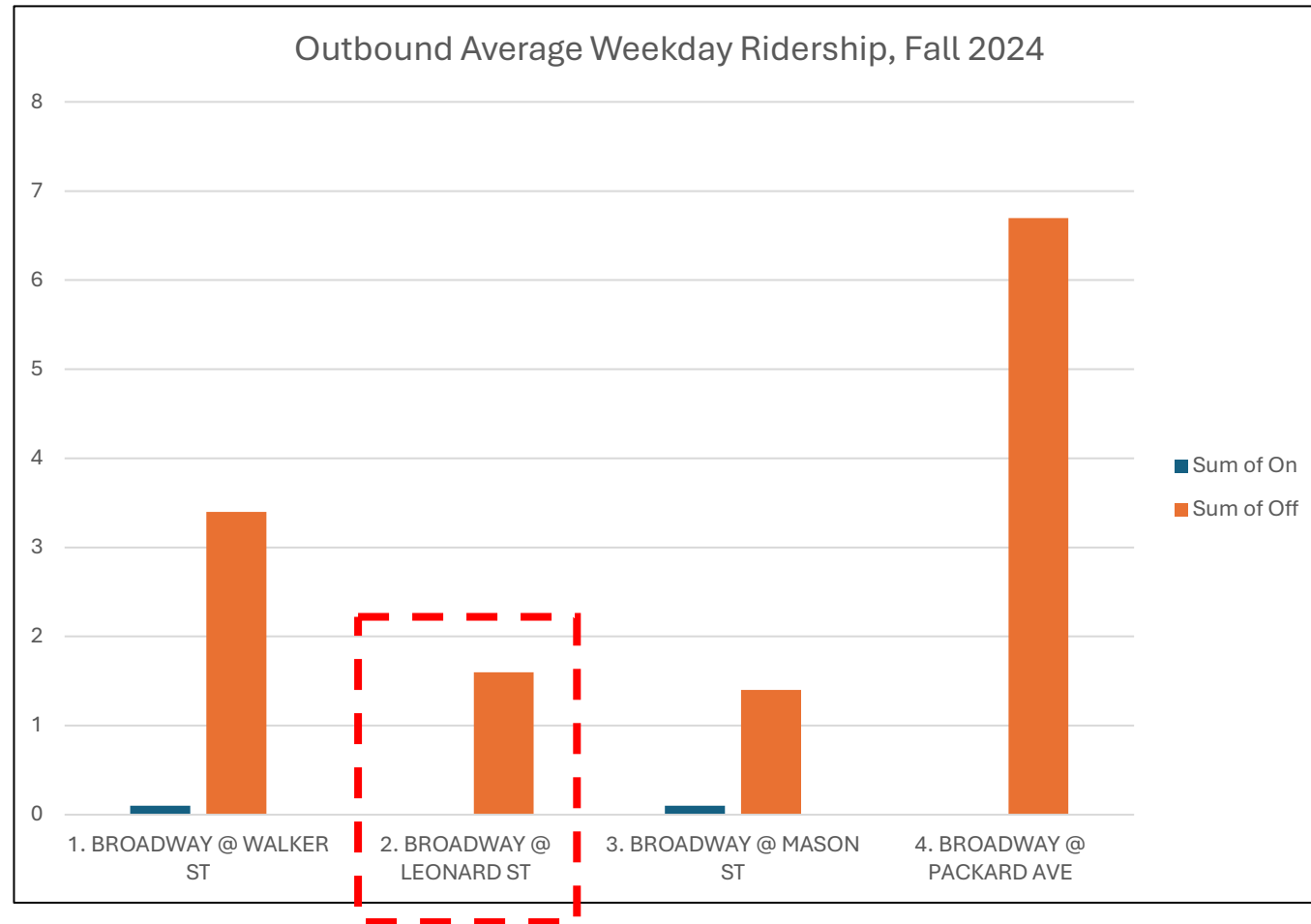


# Dangerous passing behavior observed at Wallace Street / Leonard Street crossing

- High volume of left turns from Broadway onto Wallace Street.
- Vehicles traveling thru on Broadway use Broadway @ Leonard Street bus stop to bypass vehicles slowing or stopping to make left turn onto Wallace Street or stopping for pedestrians in the crosswalk.
- This behavior creates a dangerous condition for pedestrians.



# Broadway @ Leonard Street bus stop utilization averages <2 riders per day



# Existing bus stop spacing



# Bus stop spacing w/Broadway @ Leonard Street stop elimination



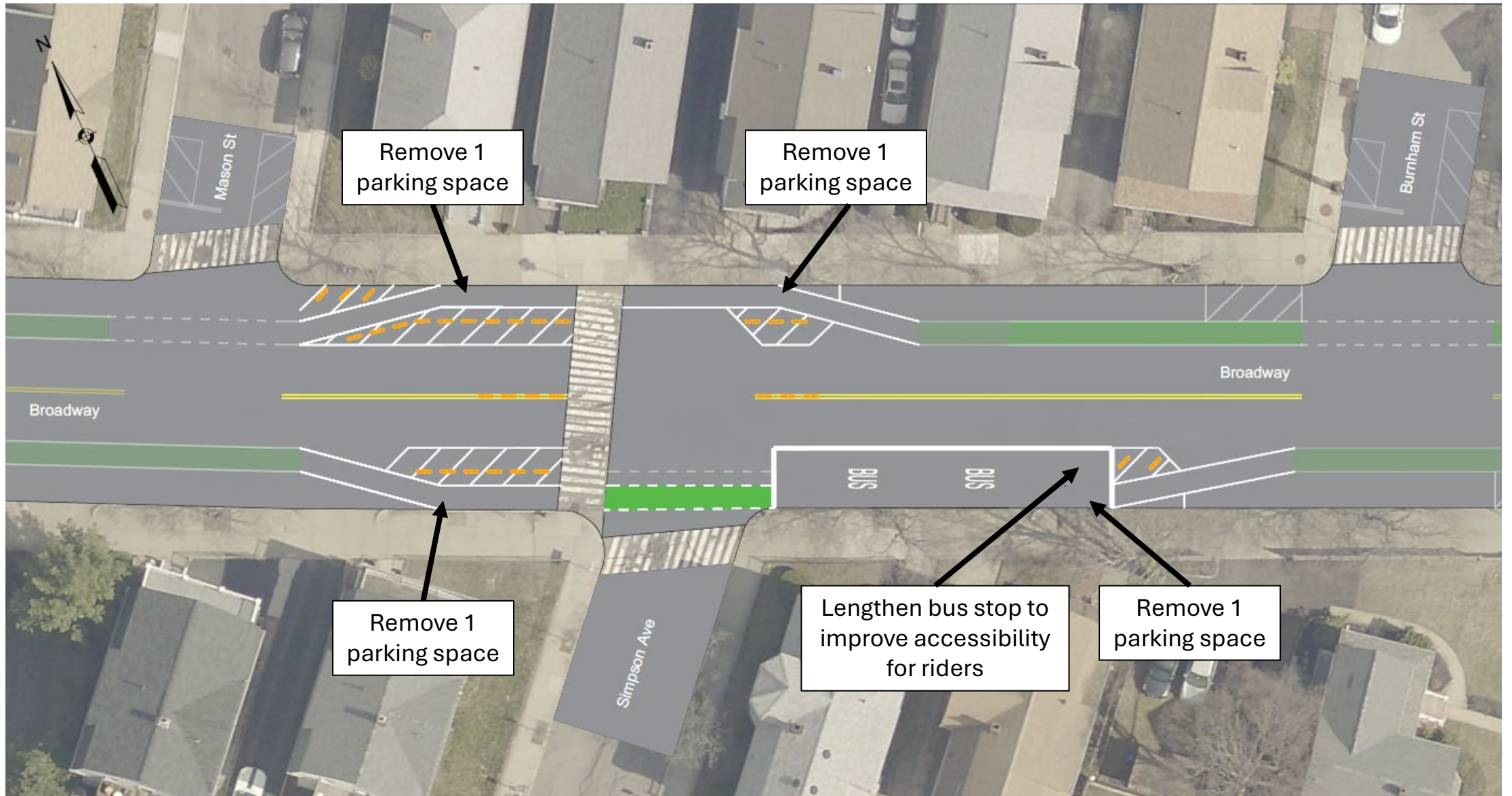
# Possible future stop spacing w/stop relocation



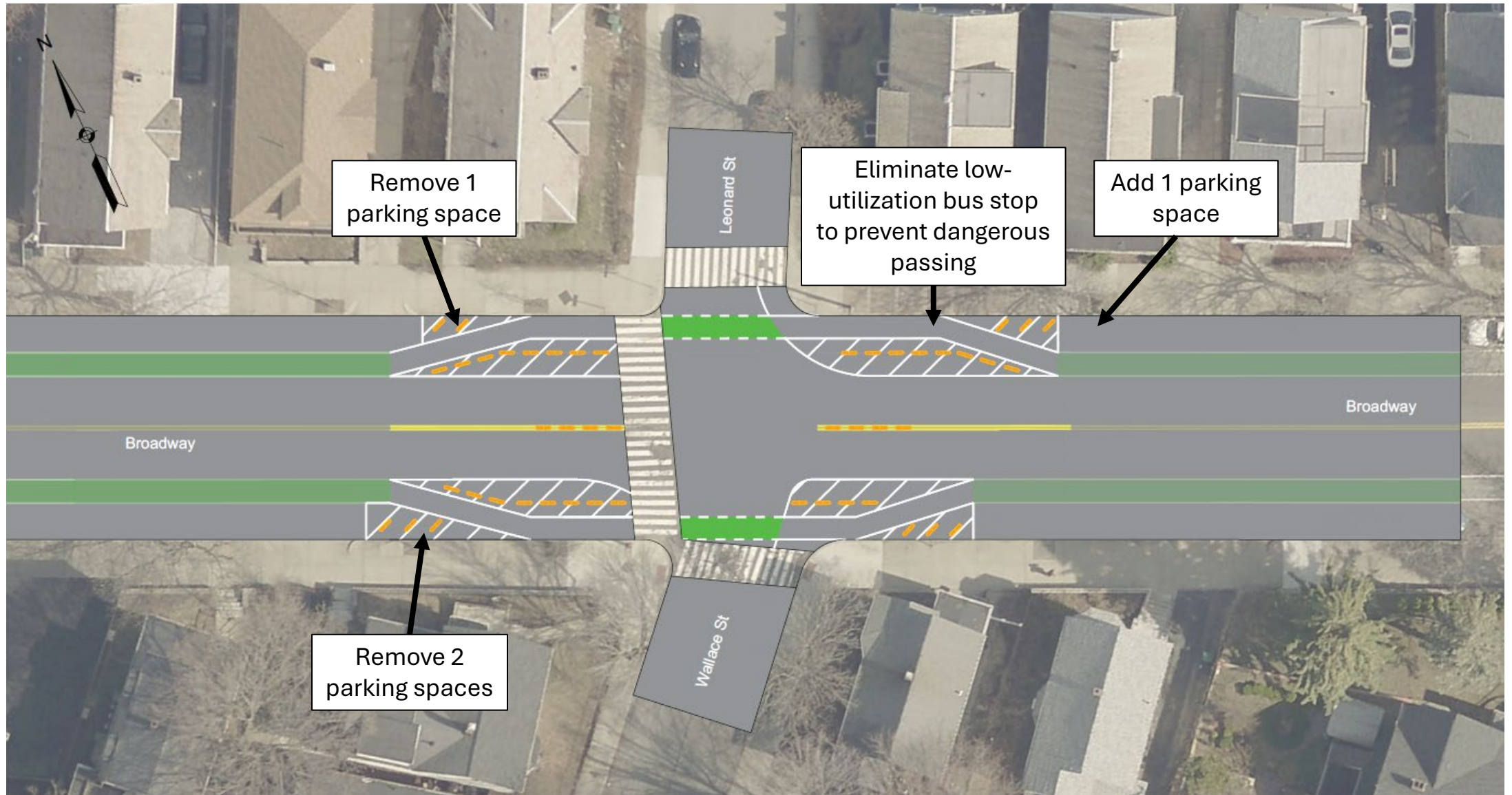
# Quick-Build Safety Opportunities

- **Better visibility between road users**
  - Pull parking farther from the intersections to improve sightlines between vehicles and pedestrians in the crosswalks
  - Create greater separation between people driving and biking
- **Reduce vehicle speeds**
  - Install flex posts along the roadway centerline and in buffer areas to force vehicles to turn more slowly
  - Visually narrow travel lanes with pavement markings and flex posts
- **Prevent dangerous passing behavior**
  - Eliminate Broadway @ Leonard Street bus stop

# Broadway at Simpson Ave Redesign



# Broadway at Wallace St/Leonard St Redesign



# Summary of Curb Regulation Changes

- **Remove seven (7) on-street parking spaces, add one (1) on-street parking space**
  - Net reduction of six (6) on-street parking spaces
  - All on-street parking spaces removed and added are regulated as two-hour parking except by permit 8:00am-2:30am, permit parking only 2:30am-8:00am
- **Eliminate one bus stop to prevent dangerous passing**
- **Expand one bus stop to improve accessibility**