



# Winter Hill Community Innovation School

Meeting #4 February 2, 2026

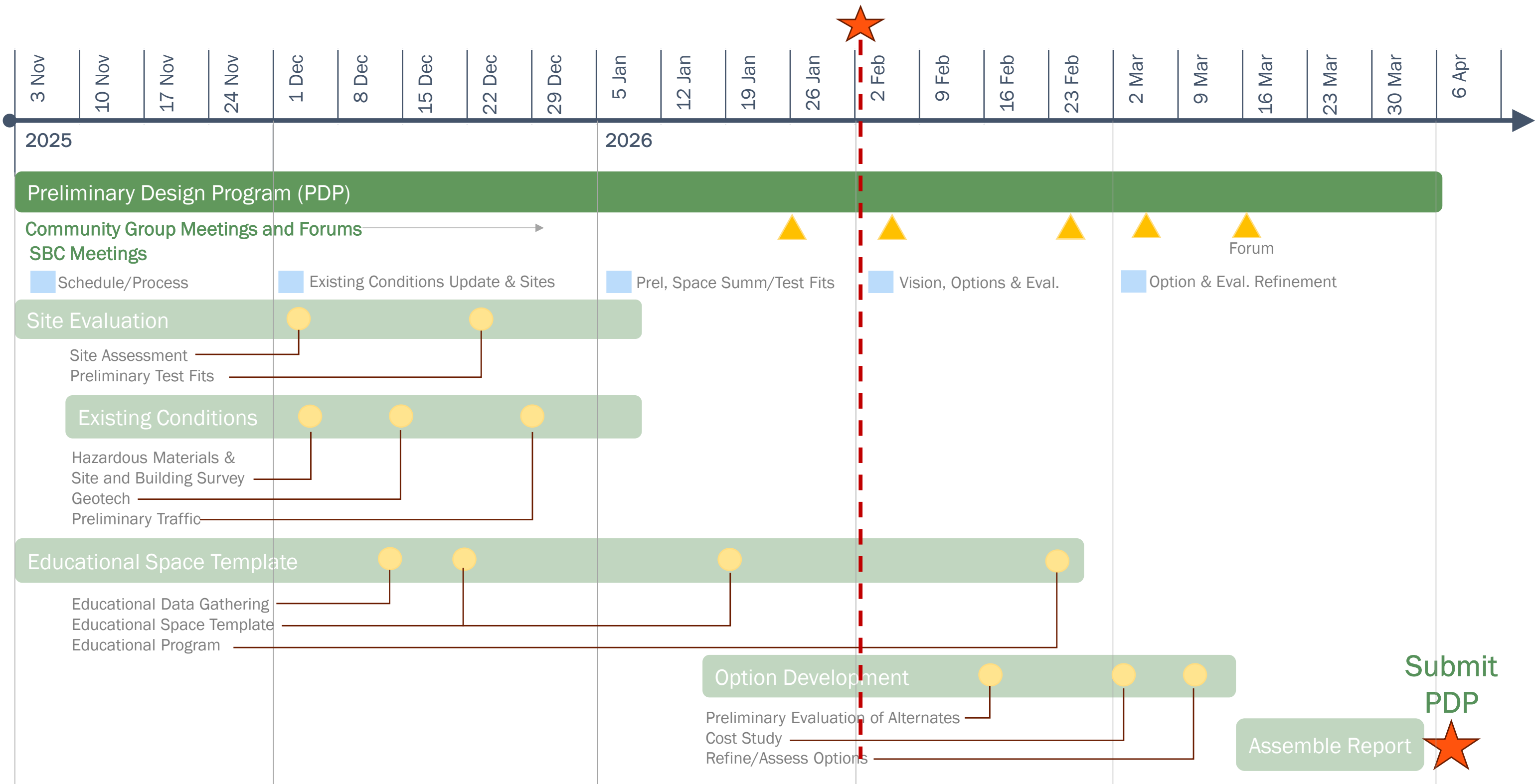
PERKINS —  
EASTMAN  
*Human by Design*



## **A G E N D A**

- Workplan Update
- Visioning & Programming Update
- Community Engagement Update
- Preliminary Options & Evaluation Criteria

# PDP WORKPLAN

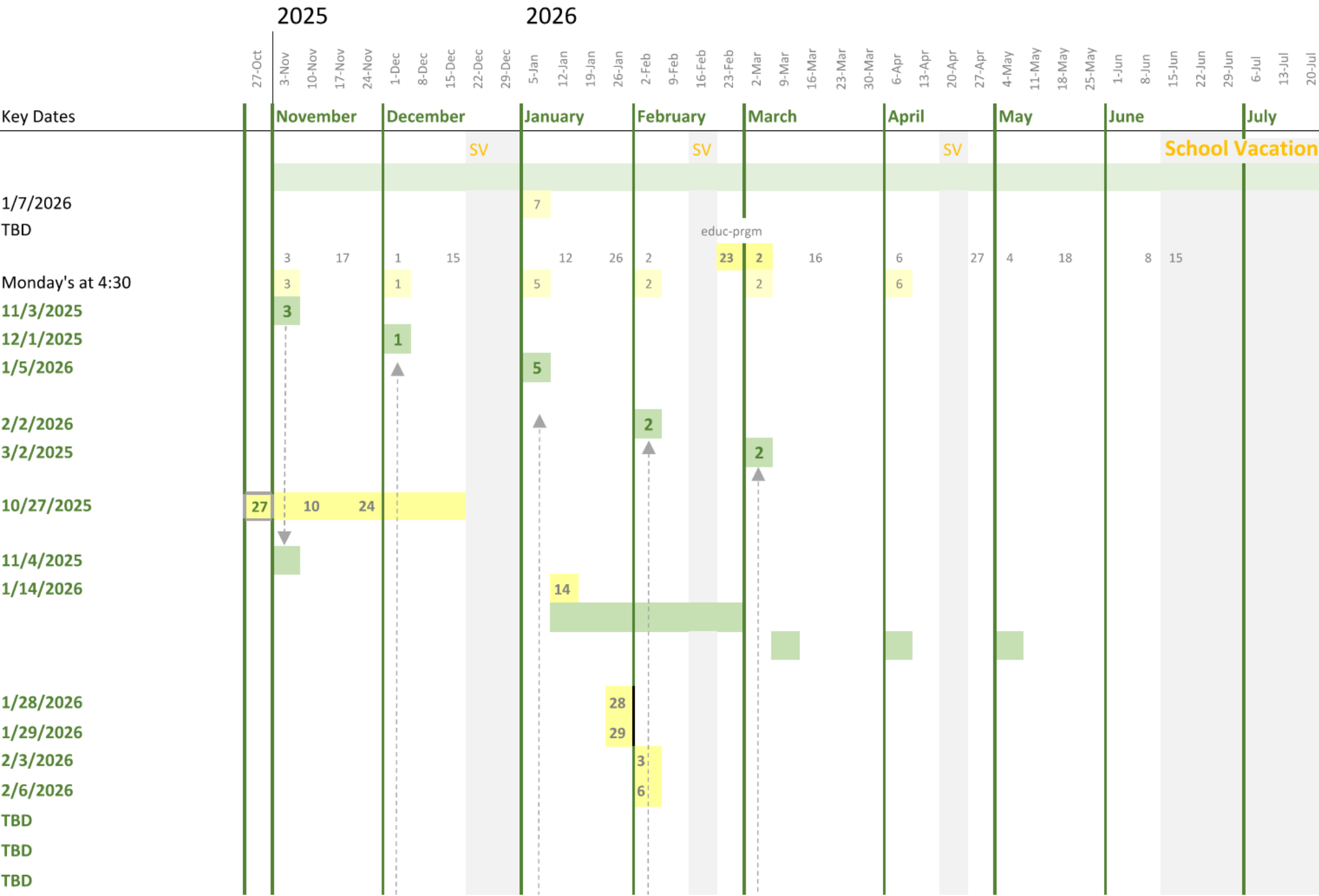


# PROJECT UPDATE

## WINTER HILL COMMUNITY INNOVATION SCHOOL WORKPLAN

### FEASIBILITY/SCHEMATIC OVERVIEW

2/2/2026



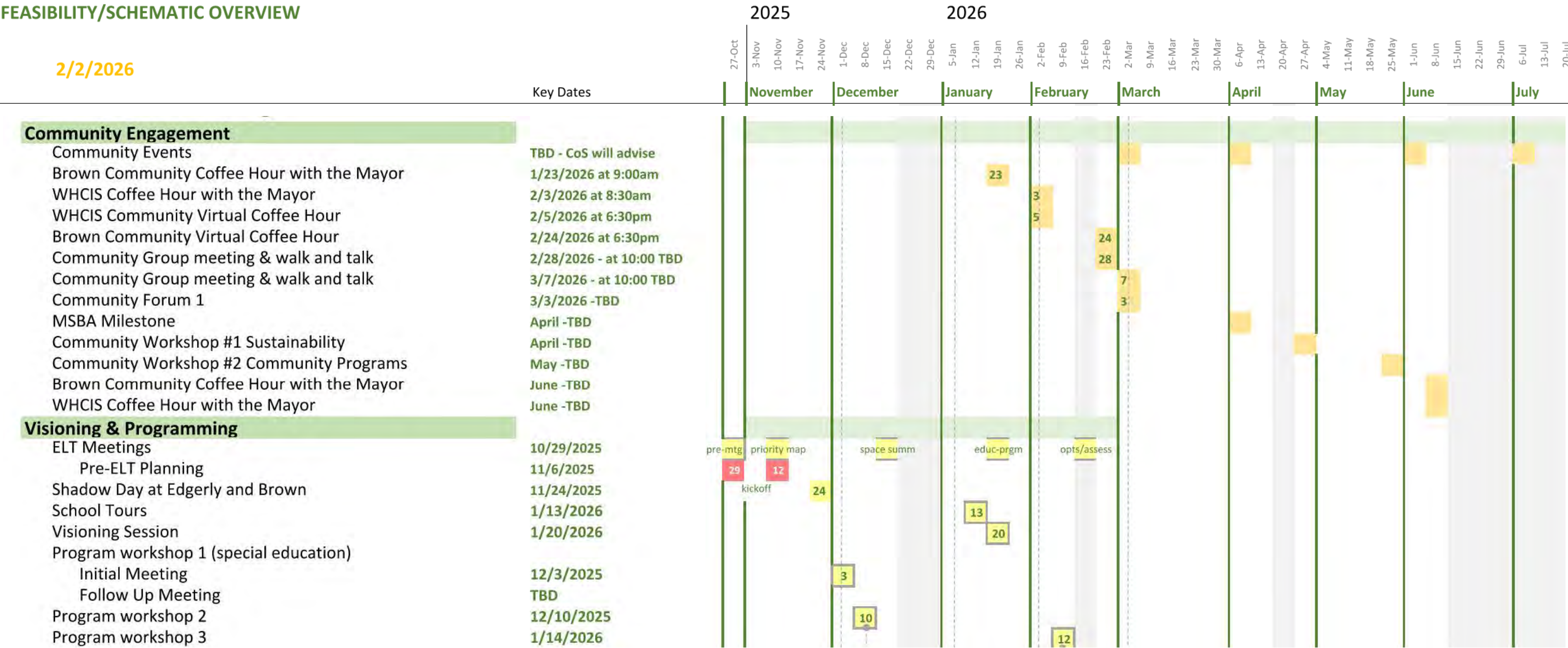


# PROJECT UPDATE

## WINTER HILL COMMUNITY INNOVATION SCHOOL WORKPLAN

### FEASIBILITY/SCHEMATIC OVERVIEW

2/2/2026

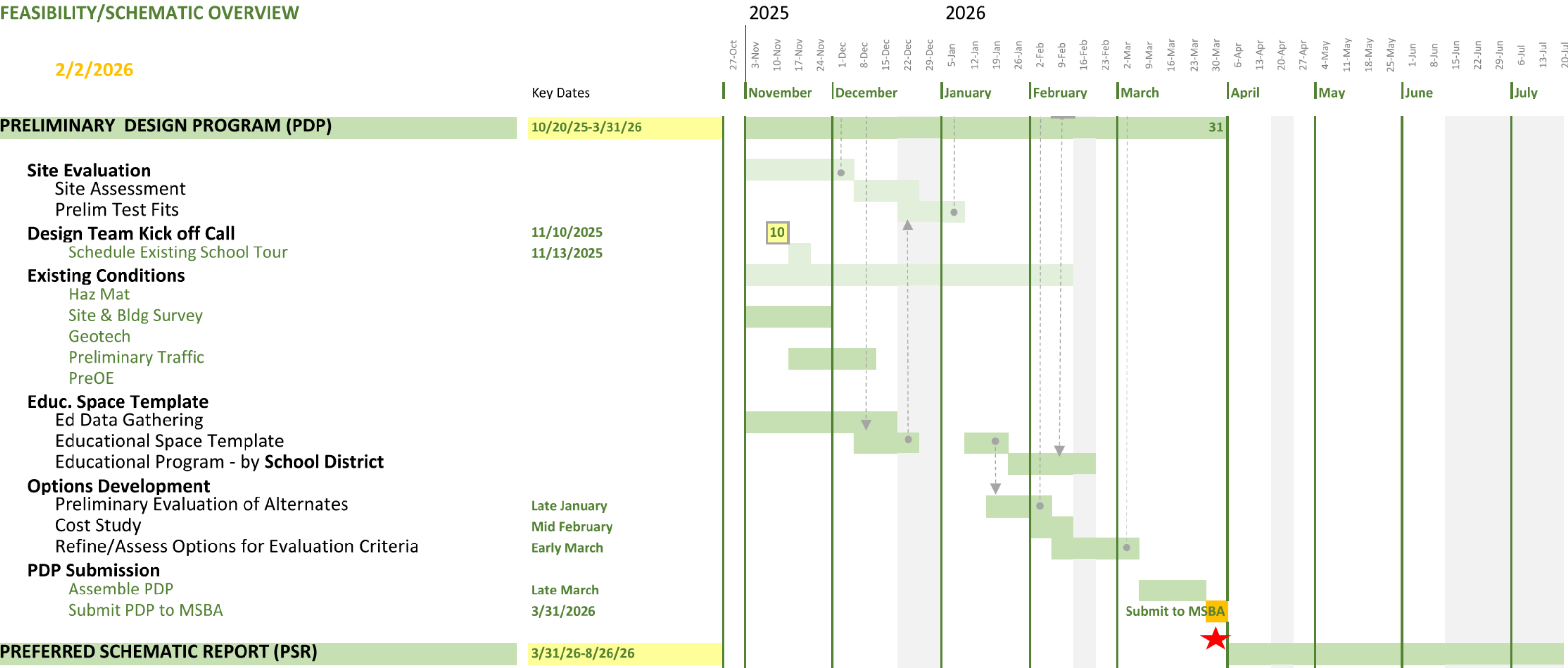


# PROJECT UPDATE

## WINTER HILL COMMUNITY INNOVATION SCHOOL WORKPLAN

### FEASIBILITY/SCHEMATIC OVERVIEW

2/2/2026





# VISIONING & PROGRAMMING UPDATE

# VISIONING & PROGRAMMING



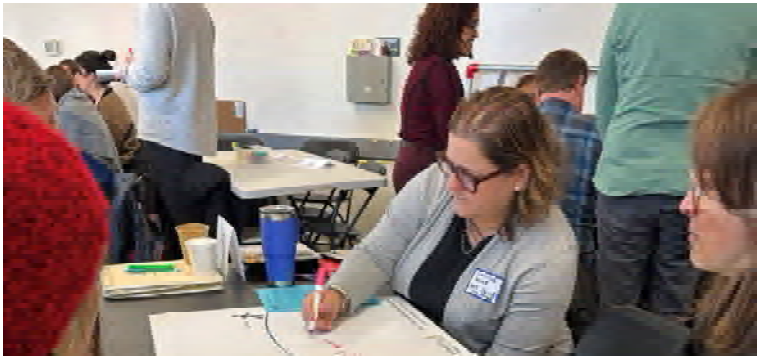
Shadow Day / November 24, 2025



School Tours / January 13, 2026



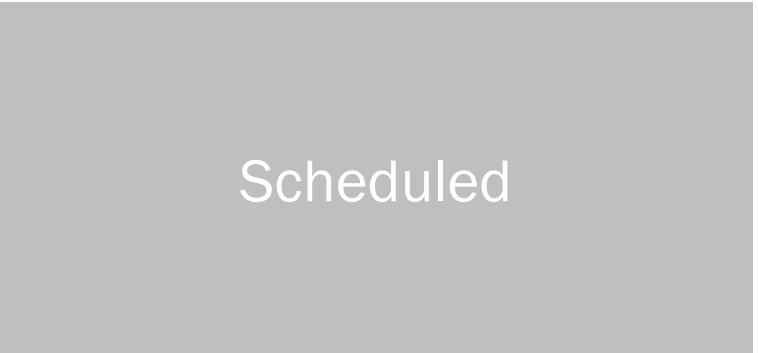
Visioning Session / January 20, 2026



Program Workshop 1 / December 1



Program Workshop 2 / December 10



Program Workshop 3 / February 12



# VISIONING FORUM



## Purpose and Structure:

1. Share an **Understanding of PK-8 Learners** & Evolving Developmental Traits
2. Examine **How Learning Sticks** & Developmental Practices to Support It
3. Define the **Winter Hill Identity** as and Community Innovation School
4. Development of **Guiding Educational Principles** to Shape Decision-Making
5. Explore **How Learning Environments Can Support the Identity & Principles**



## 60+ Forum Participants, Including:

- Educational Leadership Team
- Teachers, Specialists (WHCIS+Brown)
- Parents & Community Members
- City Leaders & Facilities Staff



## VISIONING OUTCOMES – GUIDING PRINCIPLES

- **Design must be developmentally driven**, supporting distinct PK, elementary, and middle school needs within a cohesive PK–8 identity.
- **The whole child is central**, with social-emotional growth, belonging, creativity, movement, and well-being embedded throughout the school experience.
- **Flexibility is essential** across space, time, and programming to enable innovation, choice, and future adaptability.
- **Equity and inclusion must be built in**, ensuring all learners and specialized programs are visible, valued, and appropriately supported.
- **Winter Hill is a community hub**, strengthening family engagement, shared use, and learning beyond the school day.
- **Learning is experiential and collaborative**, grounded in project-based, hands-on, and interdisciplinary approaches.
- **The environment should foster pride and shared ownership**, reinforcing a welcoming, restorative, and innovative school culture.





# VISIONING OUTCOMES – DEVELOPMENTAL DESIGN IMPLICATIONS

## Essential Daily Student Experiences

- **Daily opportunities for movement and play**, indoors and outdoors
- **Choice and agency in learning** through flexible activities and ways to engage
- **Developmentally appropriate environments and routines** aligned to age and student needs
- **Belonging and connection** through strong peer and adult relationships
- **Time and space for collaboration, small-group, and independent learning**
- **Embedded wellness and sensory supports** within a calm, predictable



## Building Design to Support Daily Experiences

- **Grade-band organization by developmental stage**, with age-appropriate classrooms, bathrooms, and outdoor areas
- **Purposeful separation and connection**, using shared spaces that allow safe, intentional multiage interaction
- **Streamlined circulation and arrival patterns**, including multiple or staggered entrances to ease congestion
- **Adaptable, well-supported learning spaces**, serving small groups, intervention, specialists, and varied instruction
- **Built-in wellness and sensory supports**, such as quiet spaces, acoustic control, and access to natural light
- **Accessible, community-oriented spaces**, supporting families and programs throughout and beyond the school day

# COMMUNITY ENGAGEMENT UPDATE



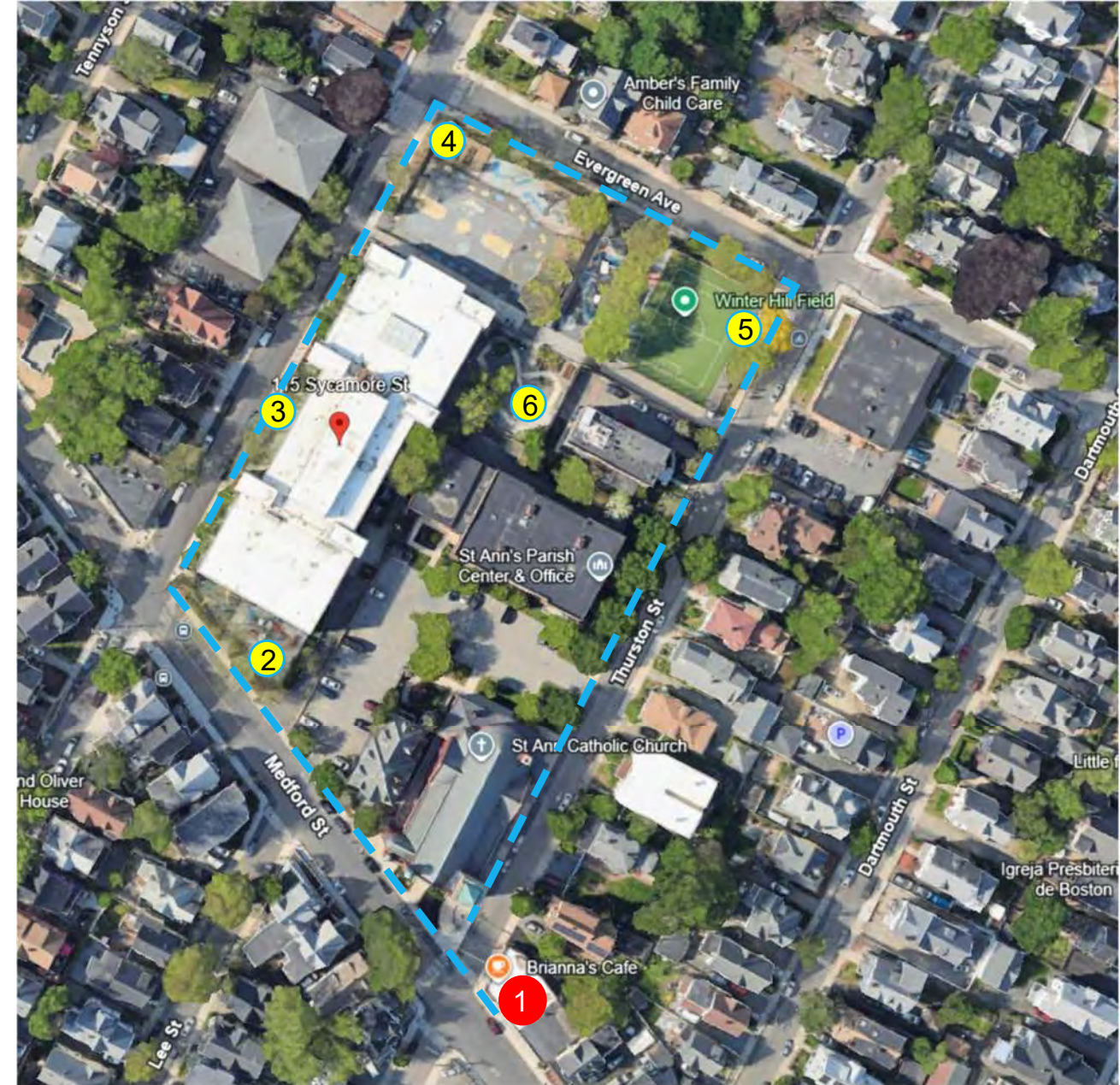
## PROJECT UPDATE

Community Engagement	
Community Events	TBD - CoS will advise
Brown Community Coffee Hour with the Mayor	1/23/2026 at 9:00am
WHCIS Coffee Hour with the Mayor	2/3/2026 at 8:30am
WHCIS Community Virtual Coffee Hour	2/5/2026 at 6:30pm
Brown Community Virtual Coffee Hour	2/24/2026 at 6:30pm
Community Group meeting & walk and talk	2/28/2026 - at 10:00 TBD
Community Group meeting & walk and talk	3/7/2026 - at 10:00 TBD
Community Forum 1	3/3/2026 -TBD
MSBA Milestone	April -TBD
Community Workshop #1 Sustainability	April -TBD
Community Workshop #2 Community Programs	May -TBD
Brown Community Coffee Hour with the Mayor	June -TBD
WHCIS Coffee Hour with the Mayor	June -TBD

# COMMUNITY OUTREACH

## Community Group Meeting and Walk and Talk

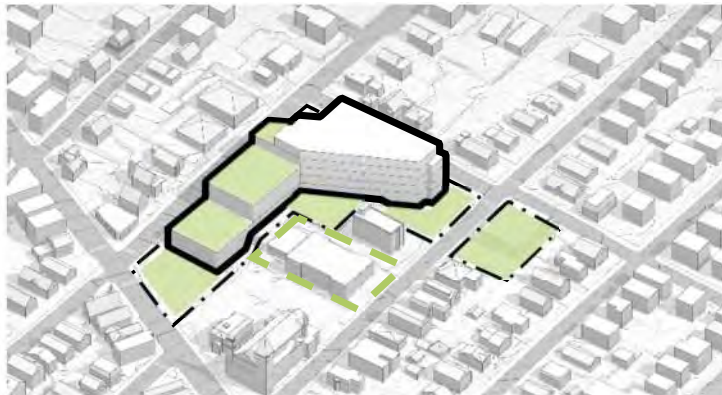
- 1 Meet at Brianna's
  - Brief project overview (grab a coffee or hot chocolate)
  - Present site assessment - what we knowDiscuss Community Needs in a neighborhood walk:
- 2
  - Discuss traffic concern
  - Outdoor space needs
  - Neighbors to the south
- 3
  - What works well
  - What doesn't work
  - What things could be improved?
  - Safety and Security concerns
  - Neighbors to the west
- 4
  - What are important features that should not be lost
  - How does the community use the outdoor spaces
  - How are the planting beds used by the community
  - Neighbors to the north
- 5
  - What do you notice about the plants and trees in this area
  - Sustainability – EV stations, PV, geothermal
  - Neighbors to the east
- 6 Review and gather final comments
  - Other community needs





# PRELIMINARY OPTIONS & EVALUATION

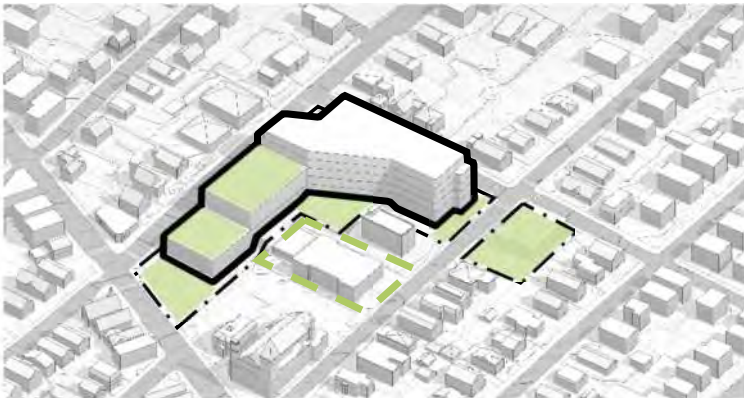
Winter Hill (690)



Trum Field (690)



Winter Hill (925)



Trum Field (925)

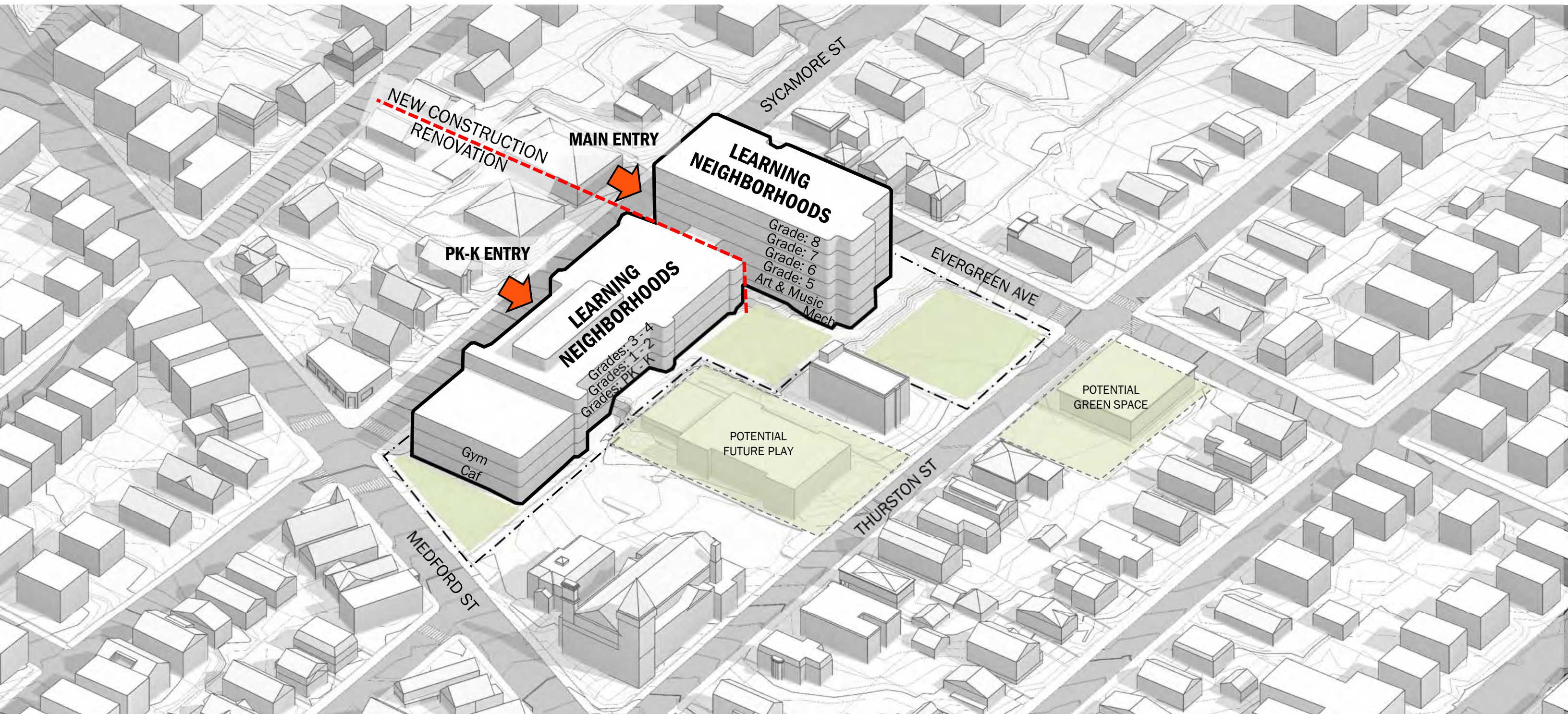


Neighbors	Replaces Old School		Mixed Use Urban/Business Area		Larger School		Mixed Use Urban/Business Area	
Walkers	Central to WH		North of WH		Central to WH/West of Brown		North of WH	
Drop Off/Pick up	3 Locations		1 Locations		3 Locations		1 Locations	
Traffic / Safety	Less Traffic		Congestion on Broadway		Less Traffic		Congestion on Broadway	
Parking	Street		Street (competes with other parking needs)		Street		Street (competes with other parking needs)	
Outdoor Play Space	Ground Level Space: 45,150 SF City Annex: 15,600 SF Church Property: 24,800 SF		40,800 SF		Ground Level Space: 40,600 SF City Annex: 15,600 SF Church Property: 24,800 SF		35,500 SF	
Roof top Play Space	13,500 SF		15,000 SF		13,000 SF		17,000 SF	
Preliminary Outdoor Program	50,000 SF		50,000 SF		66,000 SF		66,000 SF	
Solar Orientation/Energy	Geothermal Potential at Annex		Geothermal in Baseball Field		Additional Geothermal Potential at Annex		Geothermal in Baseball Field	



# ADDITION/RENOVATION – OPTION 1A

## AT 115 SYCAMORE STREET FOR 690





# ADDITION/RENOVATION – OPTION 1A

## AT 115 SYCAMORE STREET FOR 690



# ADDITION/RENOVATION – OPTION 1A

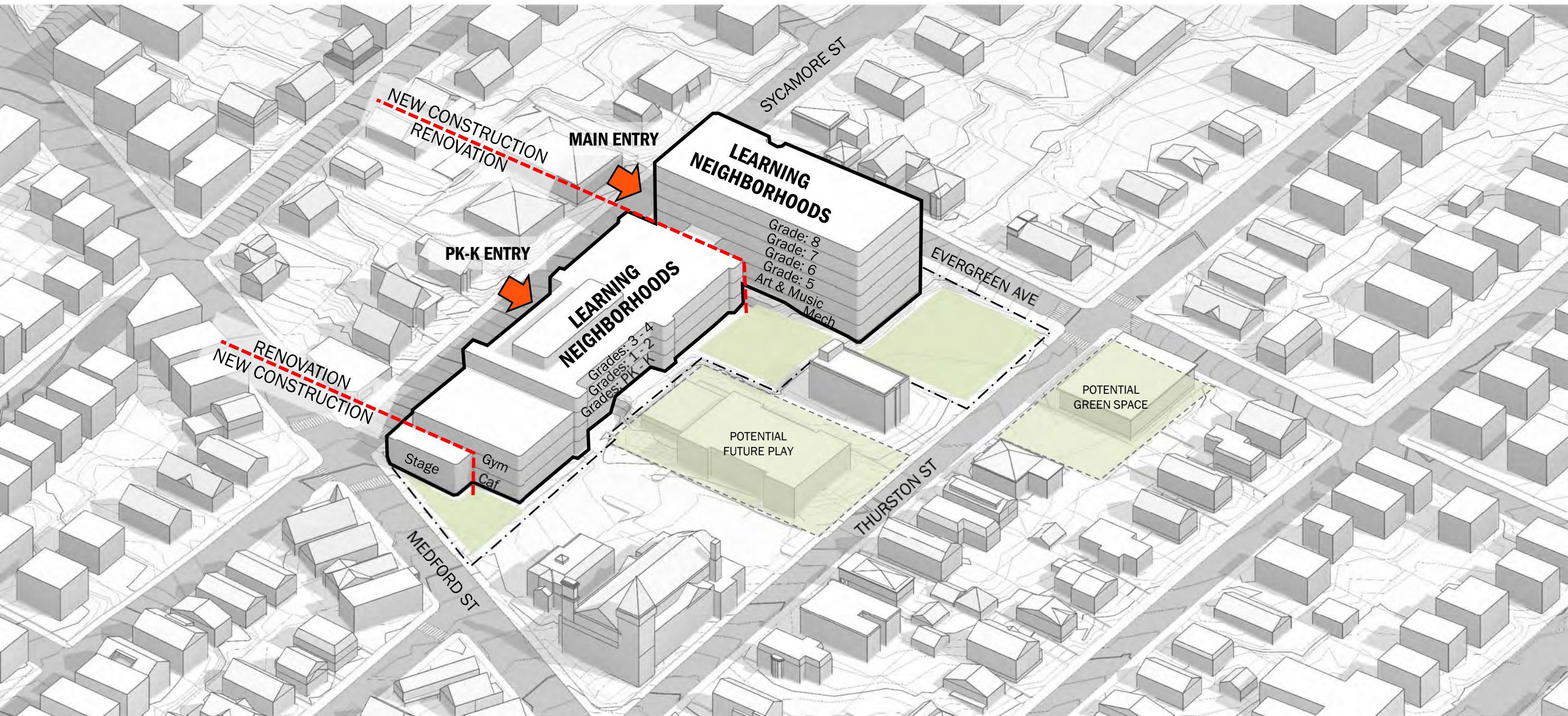
## AT 115 SYCAMORE STREET FOR 690





# ADDITION/RENOVATION – OPTION 1B

## AT 115 SYCAMORE STREET FOR 925





# ADDITION/RENOVATION – OPTION 1B

## AT 115 SYCAMORE STREET FOR 925





# ADDITION/RENOVATION – OPTION 1B

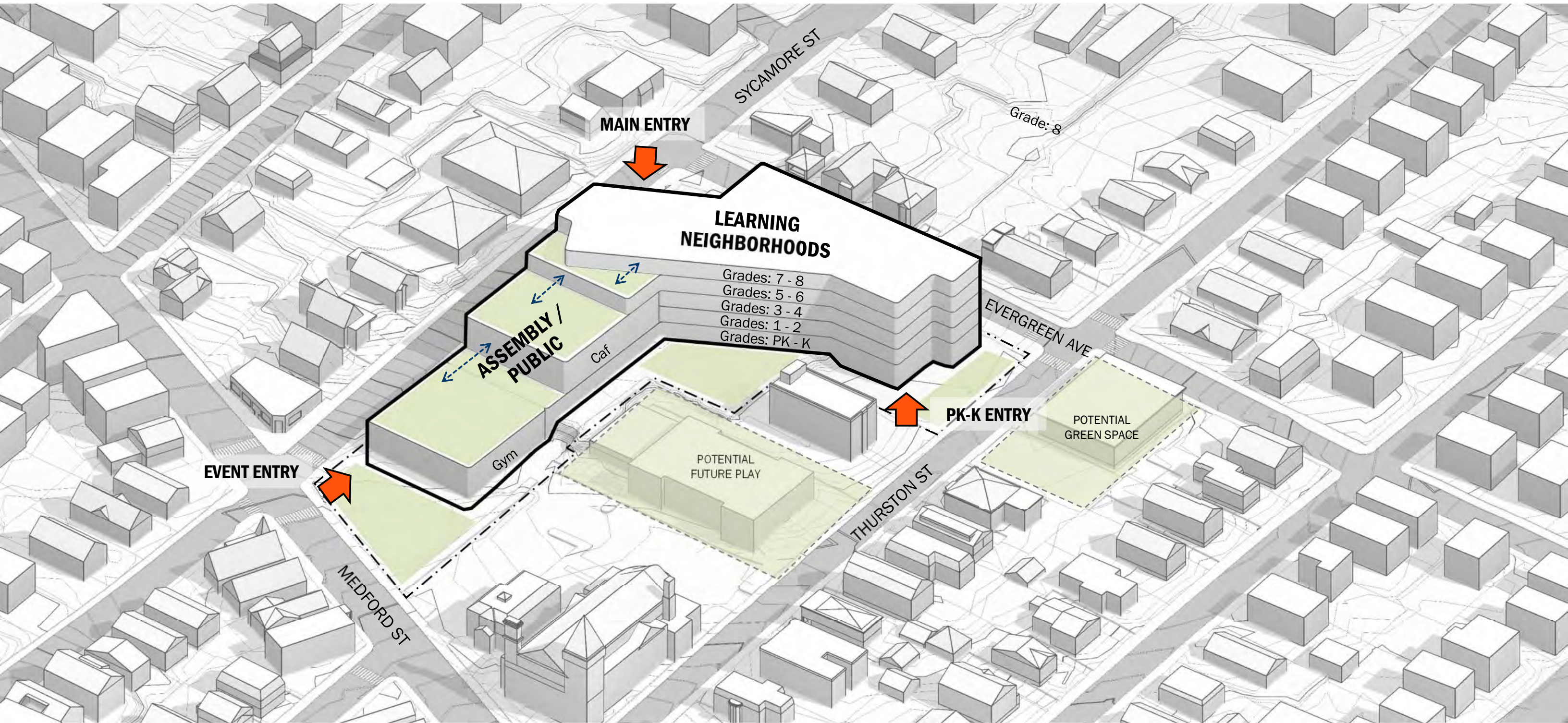
## AT 115 SYCAMORE STREET FOR 925





# NEW CONSTRUCTION- OPTION 2A

## AT 115 SYCAMORE STREET FOR 690





# NEW CONSTRUCTION- OPTION 2A

## AT 115 SYCAMORE STREET FOR 690



PERKINS — EASTMAN



NOTE: SPECIAL EDUCATION SPACES  
ARE LOCATED WITHIN EACH ACADEMIC  
NEIGHBORHOOD



# NEW CONSTRUCTION- OPTION 2A

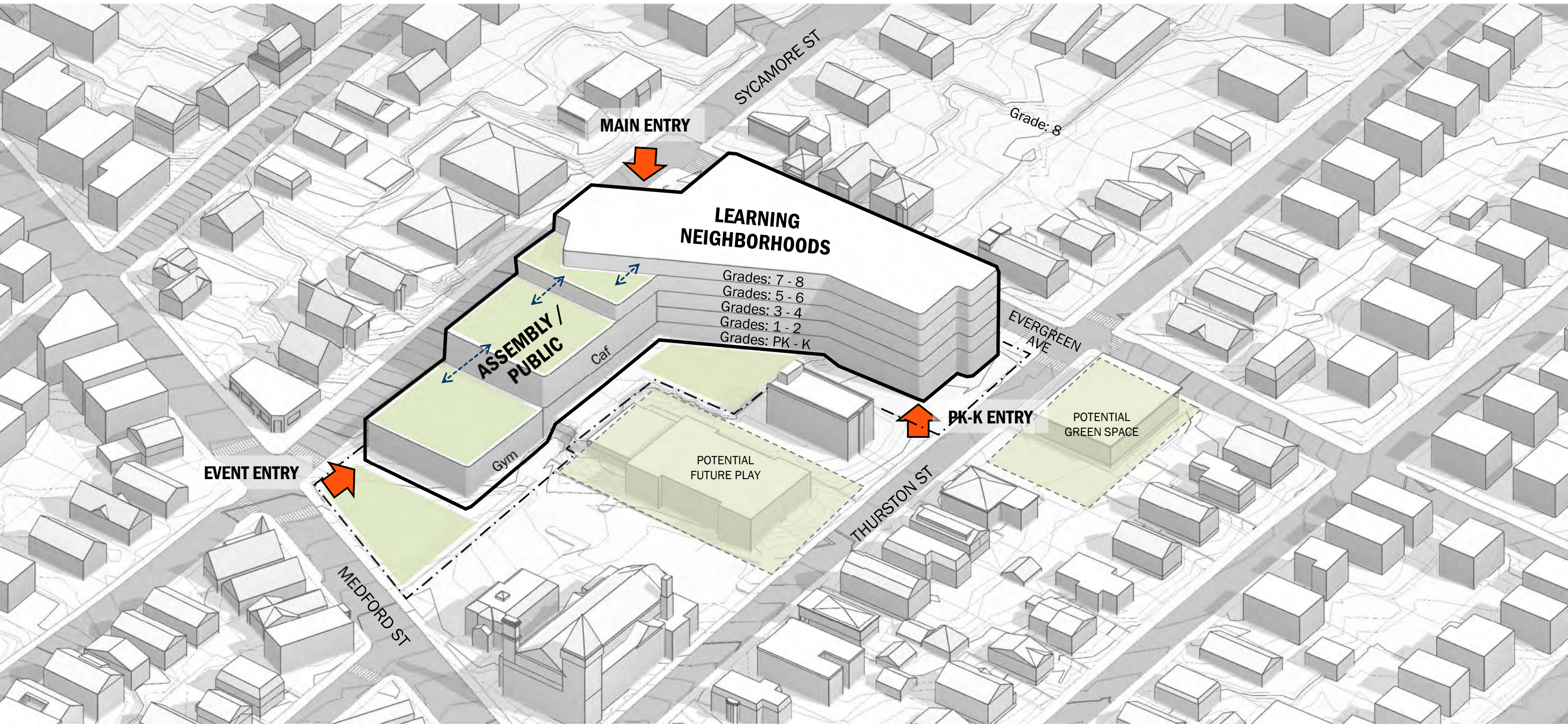
## AT 115 SYCAMORE STREET FOR 690





# NEW CONSTRUCTION- OPTION 2B

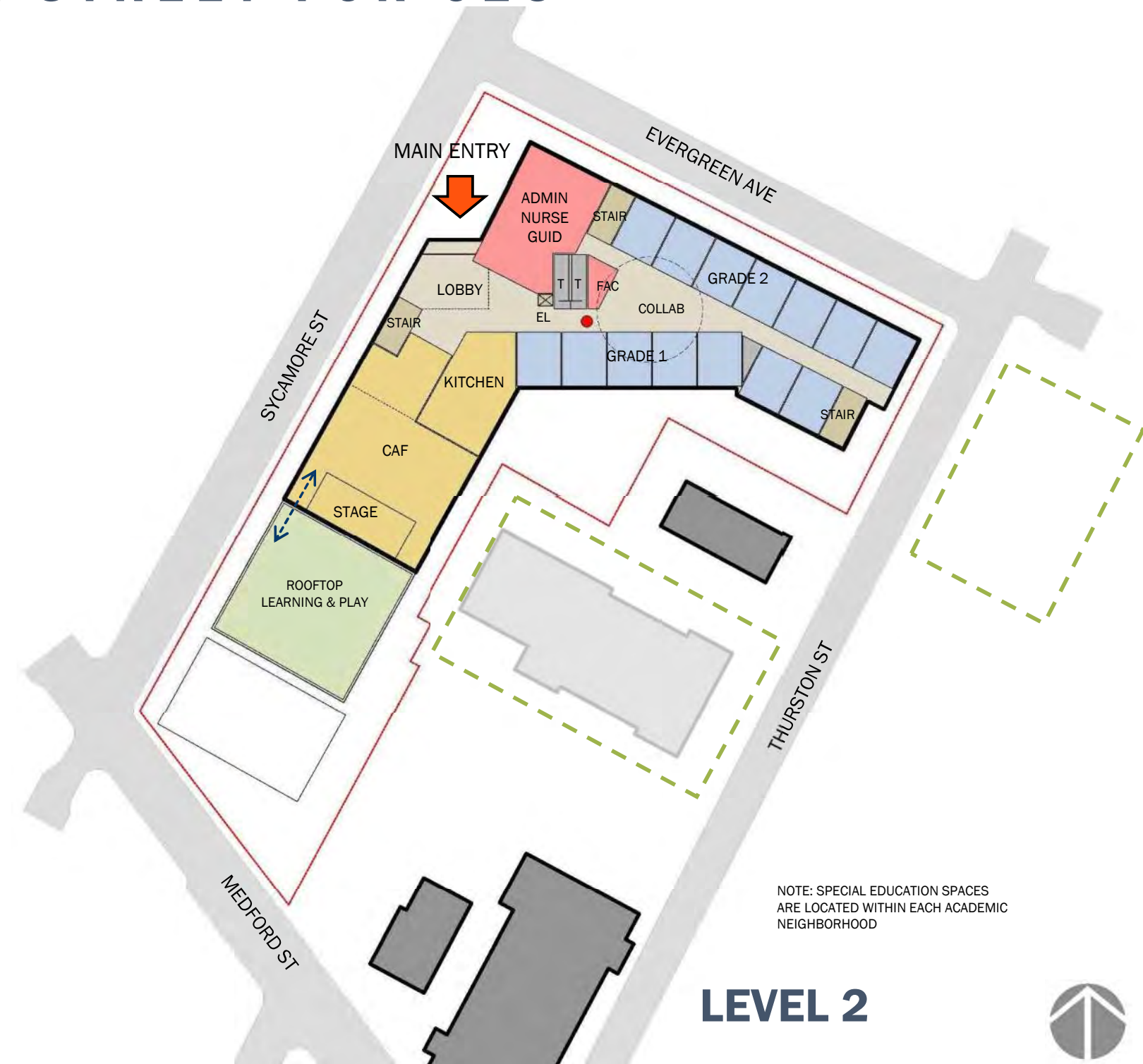
## AT 115 SYCAMORE STREET FOR 925





# NEW CONSTRUCTION- OPTION 2B

## AT 115 SYCAMORE STREET FOR 925



NOTE: SPECIAL EDUCATION SPACES ARE LOCATED WITHIN EACH ACADEMIC NEIGHBORHOOD





# NEW CONSTRUCTION- OPTION 2B

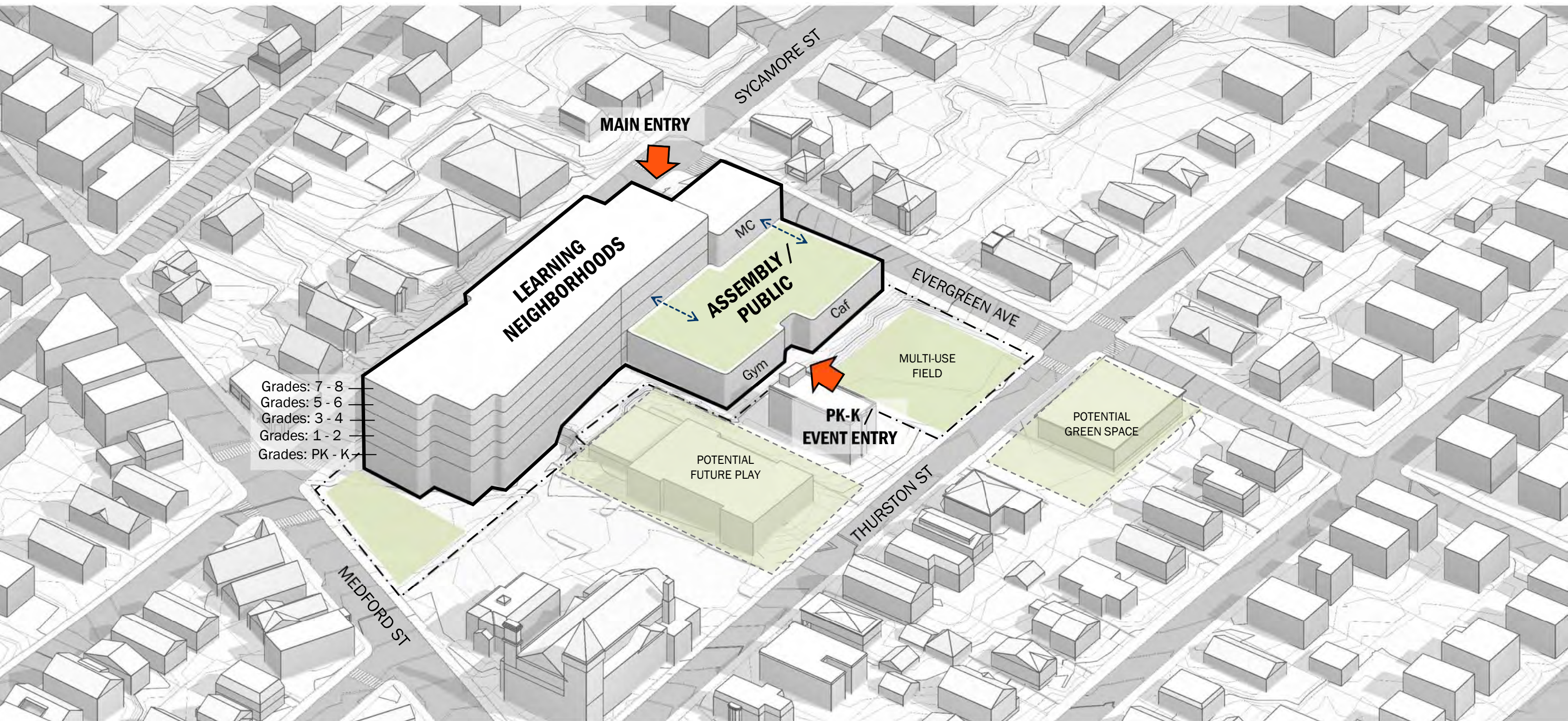
## AT 115 SYCAMORE STREET FOR 925





# NEW CONSTRUCTION - OPTION 3A

## AT 115 SYCAMORE STREET FOR 690





# NEW CONSTRUCTION – OPTION 3A

## AT 115 SYCAMORE STREET FOR 690



NOTE: SPECIAL EDUCATION SPACES  
ARE LOCATED WITHIN EACH ACADEMIC  
NEIGHBORHOOD



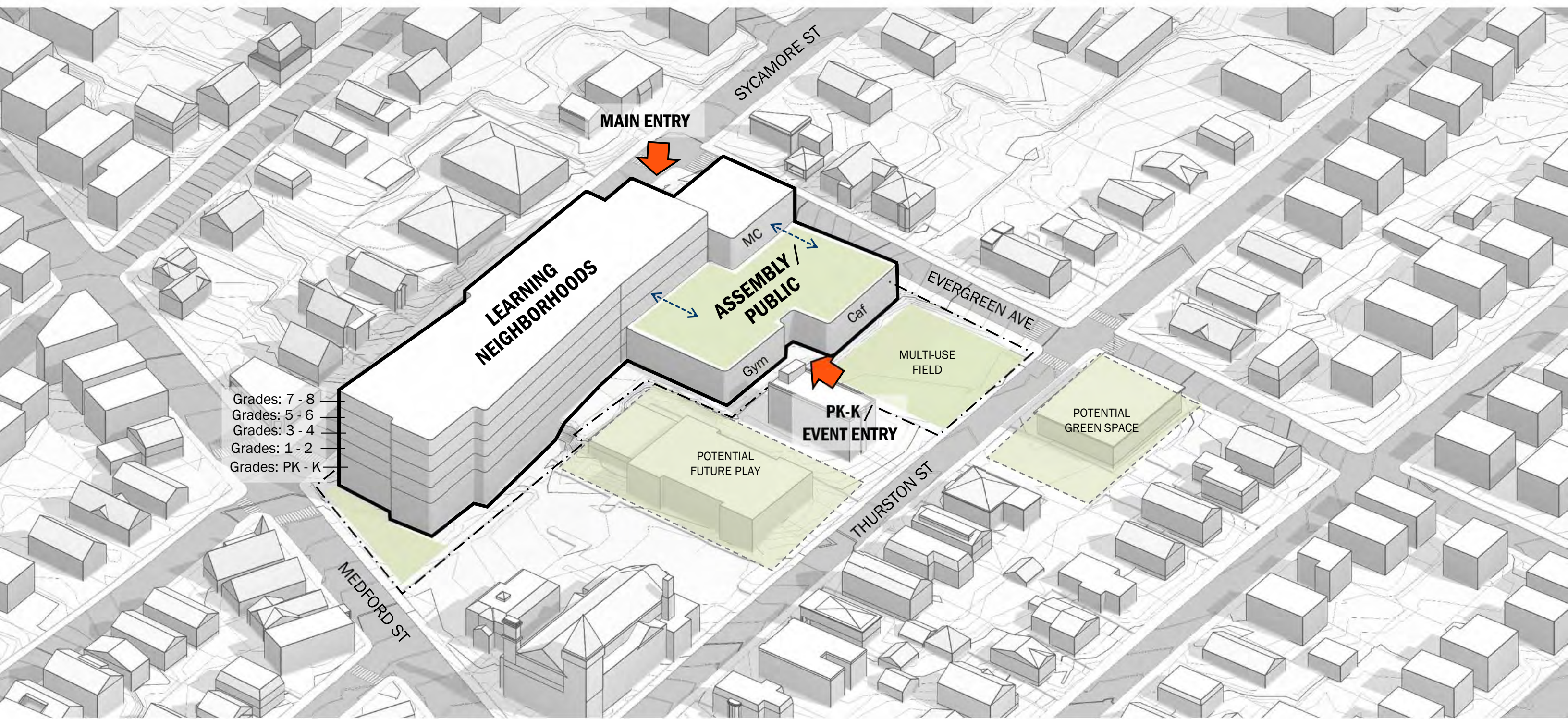
# NEW CONSTRUCTION - OPTION 3A

## AT 115 SYCAMORE STREET FOR 690





**NEW CONSTRUCTION – OPTION 3B**  
**AT 115 SYCAMORE STREET FOR 925**



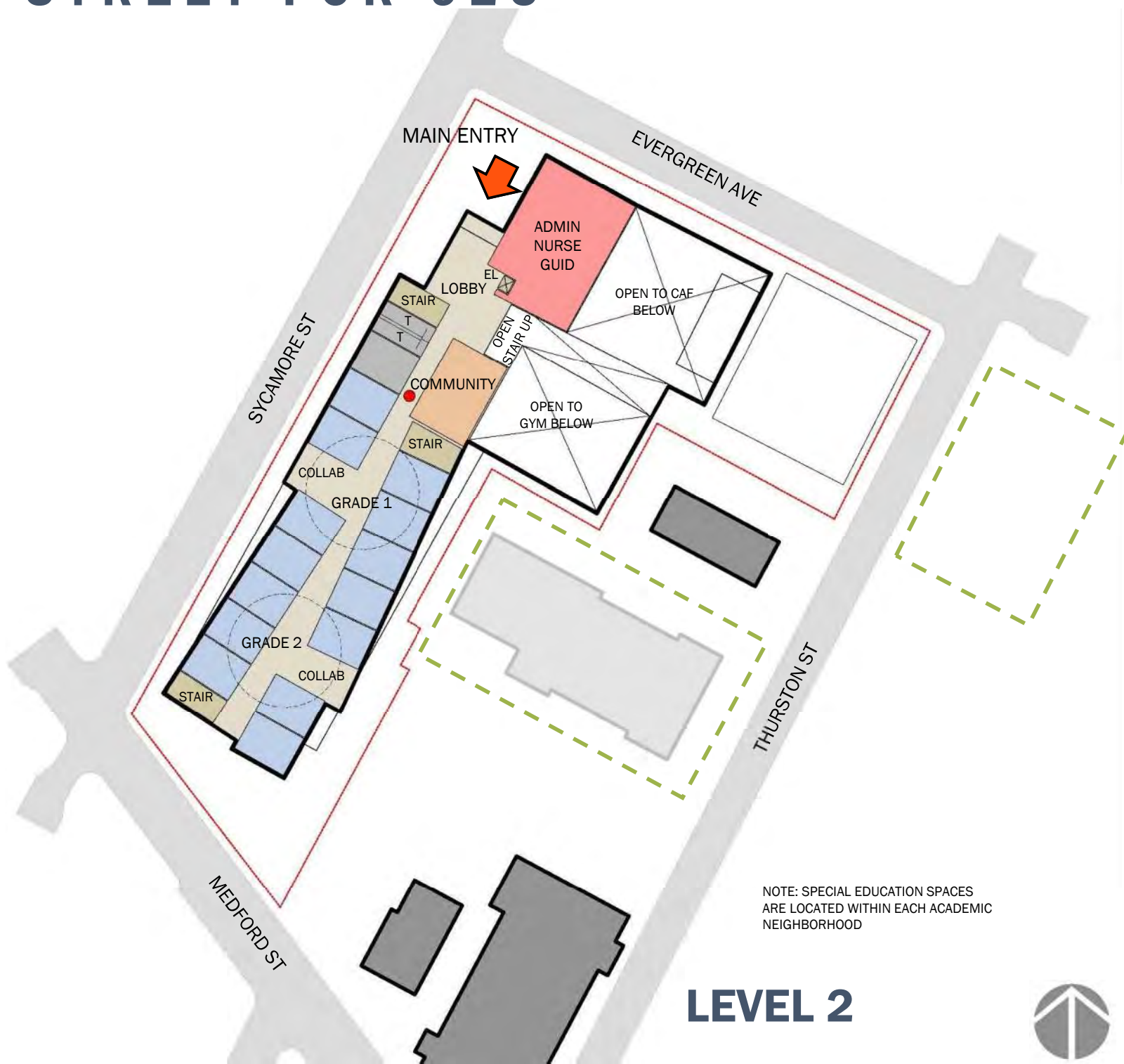


# NEW CONSTRUCTION - OPTION 3B

## AT 115 SYCAMORE STREET FOR 925



**LEVEL 1**



**LEVEL 2**

NOTE: SPECIAL EDUCATION SPACES  
ARE LOCATED WITHIN EACH ACADEMIC  
NEIGHBORHOOD





# NEW CONSTRUCTION – OPTION 3B

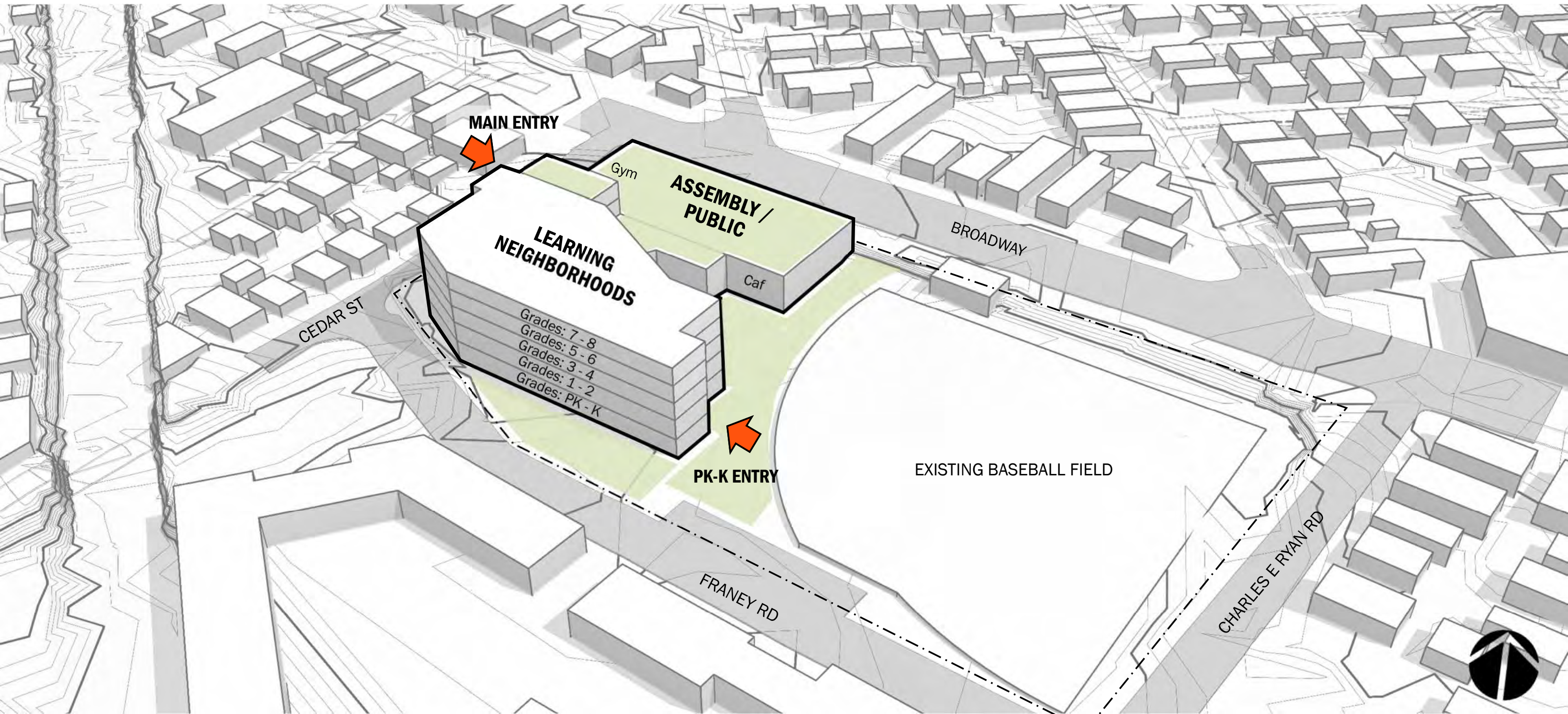
## AT 115 SYCAMORE STREET FOR 925





# NEW CONSTRUCTION - OPTION 4A

## AT TRUM FIELD FOR 690





# NEW CONSTRUCTION - OPTION 4A

## AT TRUM FIELD FOR 690

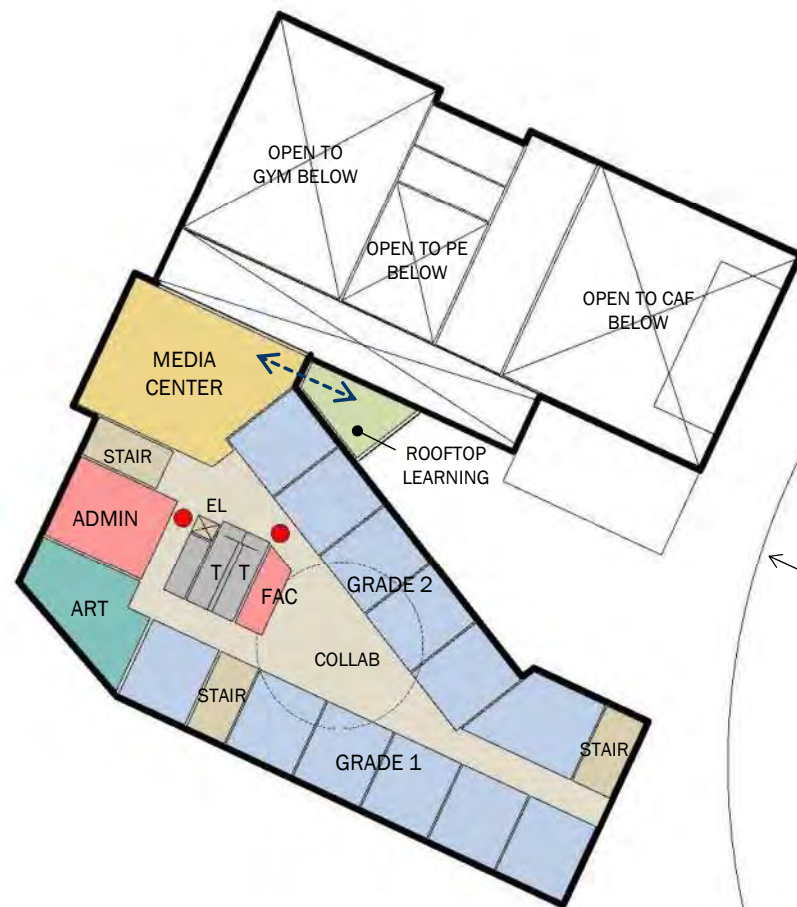


LEVEL 1



# NEW CONSTRUCTION – OPTION 4A

## AT TRUM FIELD FOR 690



LEVEL 2



LEVEL 3

NOTE: SPECIAL EDUCATION SPACES  
ARE LOCATED WITHIN EACH ACADEMIC  
NEIGHBORHOOD





# NEW CONSTRUCTION – OPTION 4A

## AT TRUM FIELD FOR 690



LEVEL 4



LEVEL 5

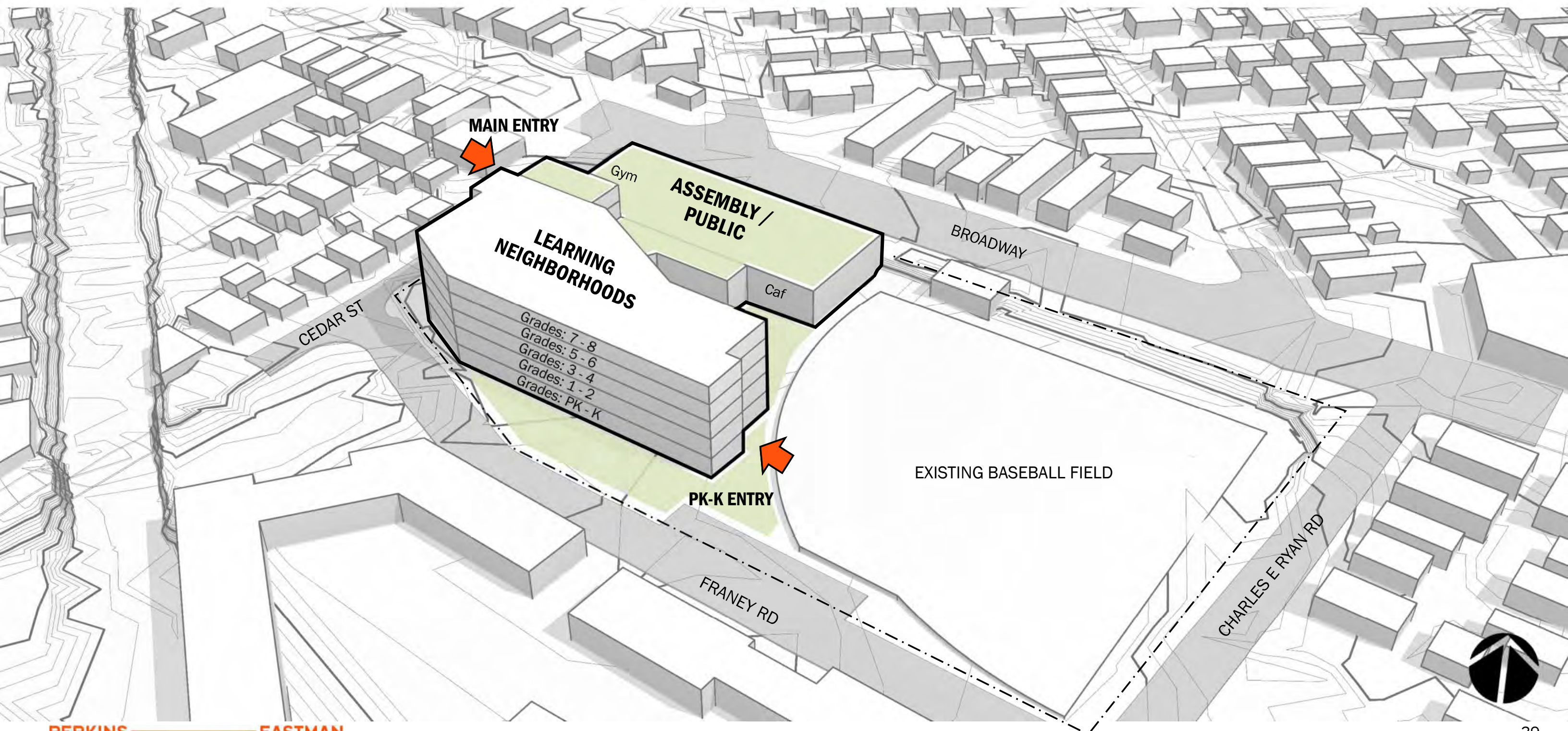
NOTE: SPECIAL EDUCATION SPACES  
ARE LOCATED WITHIN EACH ACADEMIC  
NEIGHBORHOOD





# NEW CONSTRUCTION - OPTION 4B

## AT TRUM FIELD FOR 925





# NEW CONSTRUCTION – OPTION 4B

## AT TRUM FIELD FOR 925



LEVEL 1





# NEW CONSTRUCTION – OPTION 4B

## AT TRUM FIELD FOR 925



LEVEL 2



LEVEL 3

NOTE: SPECIAL EDUCATION SPACES  
ARE LOCATED WITHIN EACH ACADEMIC  
NEIGHBORHOOD





**NEW CONSTRUCTION – OPTION 4B**  
**AT TRUM FIELD FOR 925**



**LEVEL 4**



**LEVEL 5**

NOTE: SPECIAL EDUCATION SPACES  
ARE LOCATED WITHIN EACH ACADEMIC  
NEIGHBORHOOD





# EVALUATION CRITERIA

Winter Hill Community Innovation School	Base Repair (Not an Option)	Additon/Renovation 690	Additon/Renovation 925	115 Sycamore 690	115 Sycamore 925	115 Sycamore 690	115 Sycamore 925	Trum Field 690	Trum Field 925	115 Sycamore 925 Expansion at 50 Thurston St.	115 Sycamore 925 Expansion to City Annex
Evaluation Criteria		Option 1A	Option 1B	Option 2A	Option 2B	Option 3A	Option 3B	Option 4A	Option 4B		
<b>Stakeholder and community sentiment</b> <i>Supports viewpoints and judgment of stakeholders</i>											
<b>Cost/finance implications</b> <i>Meets project budget and financial requirements of the City</i>											
<b>Walkshed impacts</b> <i>Provides pedestrian access</i>											
<b>City Wide Green Space</b> <i>Protect and expand open space</i>											
<b>Neighborhood Fit/Feel</b> <i>Supports civic identity within neighborhood context</i>											
<b>Educational considerations</b> <i>Enhances educational vision and program</i>											
<b>Health &amp; Safety impacts</b> <i>Enhances security &amp; safety, physical, mental &amp; social well-being</i>											
<b>Future expansion</b> <i>Allows for future growth</i>											
<b>District Swing Space Use</b> <i>Limits neighborhood and school district disruption</i>											
<b>Timeline</b> <i>Supports accelerated construction schedule</i>											
<b>Disruption impacts</b> <i>Limits neighborhood and school district disruption</i>											
<b>Environmental Performance</b> <i>Reflect and support City's goal to support biodiversity, conserve resources, and provide healthy learning environment</i>											
<b>Orientation</b> <i>Placement of the building to maximize daylight and limit glare</i>											
<b>Operation costs/Maintenance</b> <i>Limits expenses for building operations and repairs</i>											
<b>Traffic</b> <i>Limits traffic impacts</i>											
<b>Permitting Complexity</b> <i>Provides advantages for ease, timing, and cost of permitting.</i>											



<b>Stakeholder and community sentiment</b> <i>Supports viewpoints and judgment of stakeholders</i>
<b>Cost/finance implications</b> <i>Meets project budget and financial requirements of the City</i>
<b>Walkshed impacts</b> <i>Provides pedestrian access</i>
<b>City Wide Green Space</b> <i>Protect and expand open space</i>
<b>Neighborhood Fit/Feel</b> <i>Supports civic identity within neighborhood context</i>
<b>Educational considerations</b> <i>Enhances educational vision and program</i>
<b>Health &amp; Safety impacts</b> <i>Enhances security &amp; safety, physical, mental &amp; social well-being</i>
<b>Future expansion</b> <i>Allows for future growth</i>

<b>District Swing Space Use</b> <i>Limits neighborhood and school district disruption</i>
<b>Timeline</b> <i>Supports accelerated construction schedule</i>
<b>Disruption impacts</b> <i>Limits neighborhood and school district disruption</i>
<b>Environmental Performance</b> <i>Reflect and support City's goal to support biodiversity, conserve resources, and provide healthy learning environment</i>
<b>Orientation</b> <i>Placement of the building to maximize daylight and limit glare</i>
<b>Operation costs/Maintenance</b> <i>Limits expenses for building operations and repairs</i>
<b>Traffic</b> <i>Limits traffic impacts</i>
<b>Permitting Complexity</b> <i>Provides advantages for ease, timing, and cost of permitting,</i>

## NEXT STEPS

- Refined Options & Evaluation Criteria
- Present Space Summary and Education Program





Thank you!