

WARNING POST KIT

Ground Mount • 48"x 7" • 4-sided

P/N: CC4008V-KIT-DL



CAR COMING Post Description

The CAR COMING Post is Warning Sign and Control System that warns pedestrians of vehicles exiting parking garages or other blind spots. When a vehicle is detected, the CAR COMING POST activates a Visual Flashing Alert and a Voice Message stating "Attention, vehicles exiting. Watch for vehicles!"

How the CAR COMING Post works

A sensor detects a vehicle about to leave the parking garage it sends a signal to the PASS Signs Controller. The Controller activates the flashing circuit of the post and the audio device for a set time on the controller.

CAR COMING Post Kit Versions with Part Numbers

CC4807V-KIT

- Sign enclosure
- PASS Controller (PSC) with audio board
- Speaker
- Power supply

CC4807V-KIT-MO

- Sign enclosure
- PASS Controller (PSC) with audio board
- Speaker
- Power supply
- Basic motion detector

CC4807V-KIT-DL

- Sign enclosure
- PASS Controller (PSC) with audio board
- Speaker
- Power supply
- Intelligent Directional Logic motion

CAR COMING Post Specifications

Purpose
Dimensions
Mounting
Finish
Material
Datasheet
A&E Spec
Install guide
Install video

Warn pedestrians of a car exiting the parking garage with Flashing Visual and Voice Alerts
48" x 7" x 7"
Ground-mounted

Hammered copper textured powder coating
14AWG Steel Anti-Vandal Severe Weather
[Car Coming Warning Post Datasheet](#)
Coming Soon
[Car Coming Warning Post Installation Guide](#)
Coming Soon

VEHICULAR TRAFFIC
WARNING POST
LOCATION



PROJECT NAME

44 WHITE STREET
RESIDENCES

PROJECT ADDRESS

44 WHITE STREET,
SOMERVILLE, MA

CLIENT

JACOB SIMMONS

ARCHITECT



KHALSA DESIGN, INC.
17 IVALOO STREET SUITE 400
SOMERVILLE, MA 02143

TELEPHONE: 617-591-8682

CONSULTANTS:

COPYRIGHT KDI © 2025
THESE DRAWINGS ARE NOW AND DO
REMAIN THE SOLE PROPERTY OF KHALSA
DESIGN INC. USE OF THESE PLANS OR ANY
FORM OF REPRODUCTION OF THIS DESIGN
IN WHOLE OR IN PART WITHOUT EXPRESS
WRITTEN CONSENT IS PROHIBITED AND
SHALL RESULT IN THE FULLEST EXTENT
OF PROSECUTION UNDER LAW

REGISTRATION

Project number 24025
Date 12/08/2025
Drawn by NB_RR
Checked by TMC
Scale 3/16" = 1'-0"

REVISIONS

No.	Description	Date

CAR WARNING
POST

A-020.1

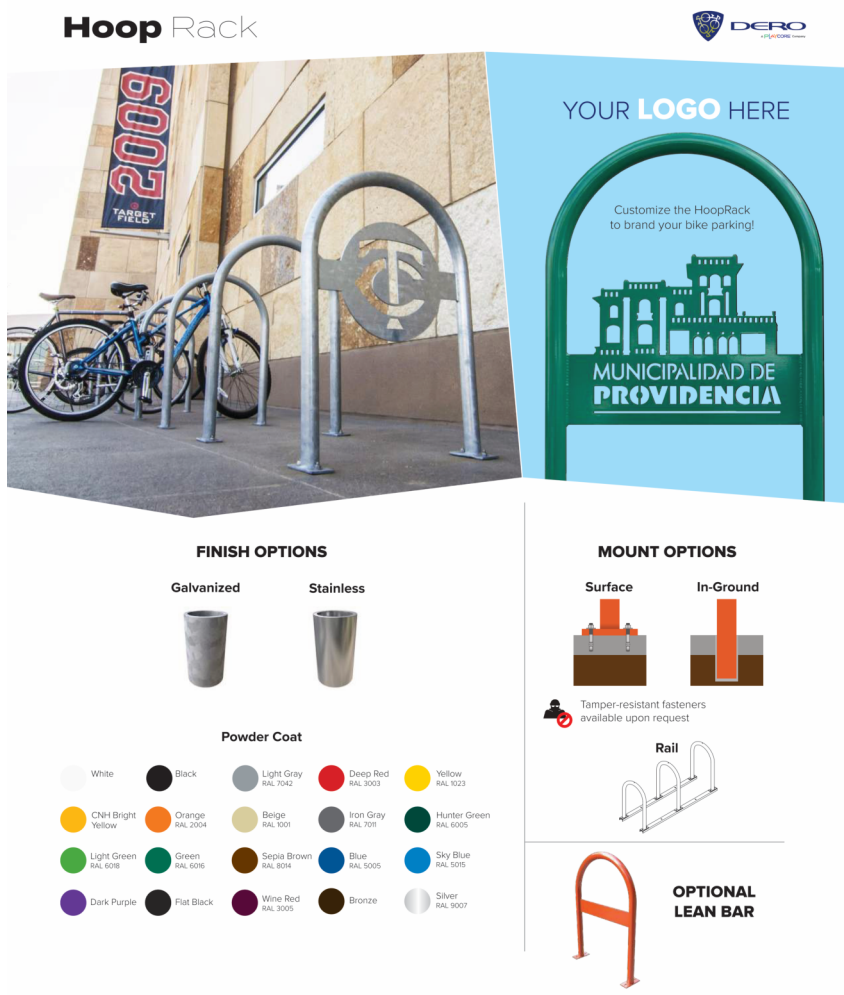
44 WHITE STREET RESIDENCES

TYPE 1



Hoop Rack

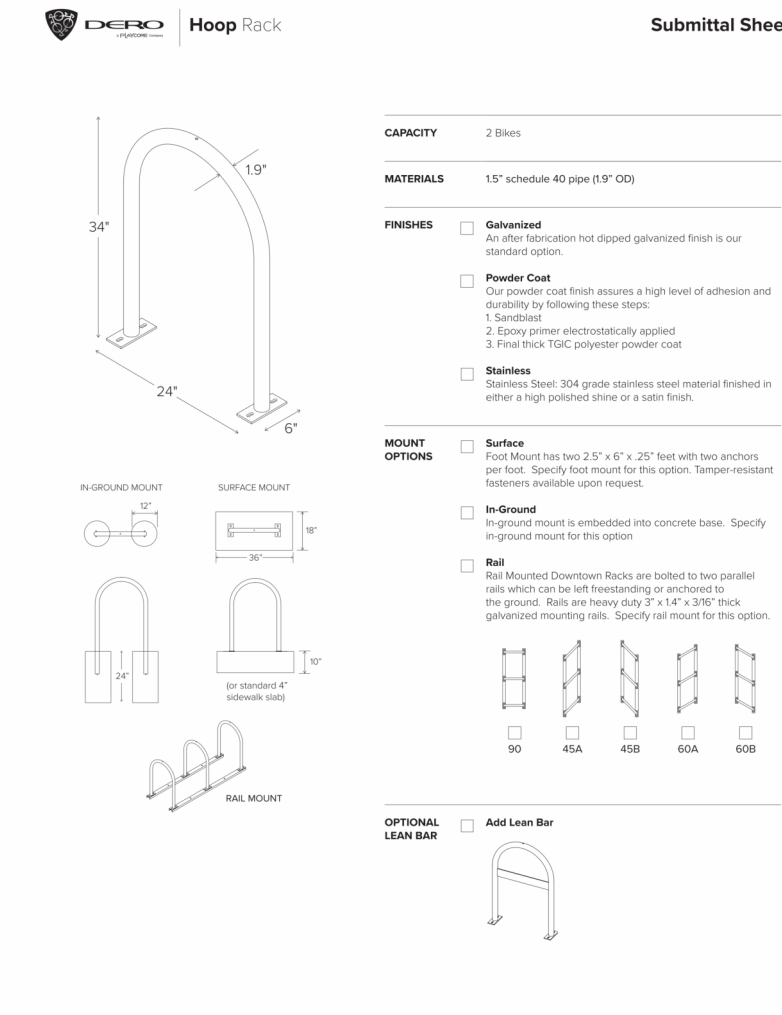
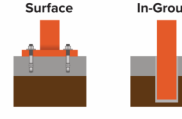
The Hoop Rack is a proven design that provides high security and easy bike parking. The Hoop Rack uses thick pipe construction and the full radius of the hoop makes the Hoop an attractive and functional bike rack. The Hoop Rack can also be put on rails for mobility and a popular indoor choice.



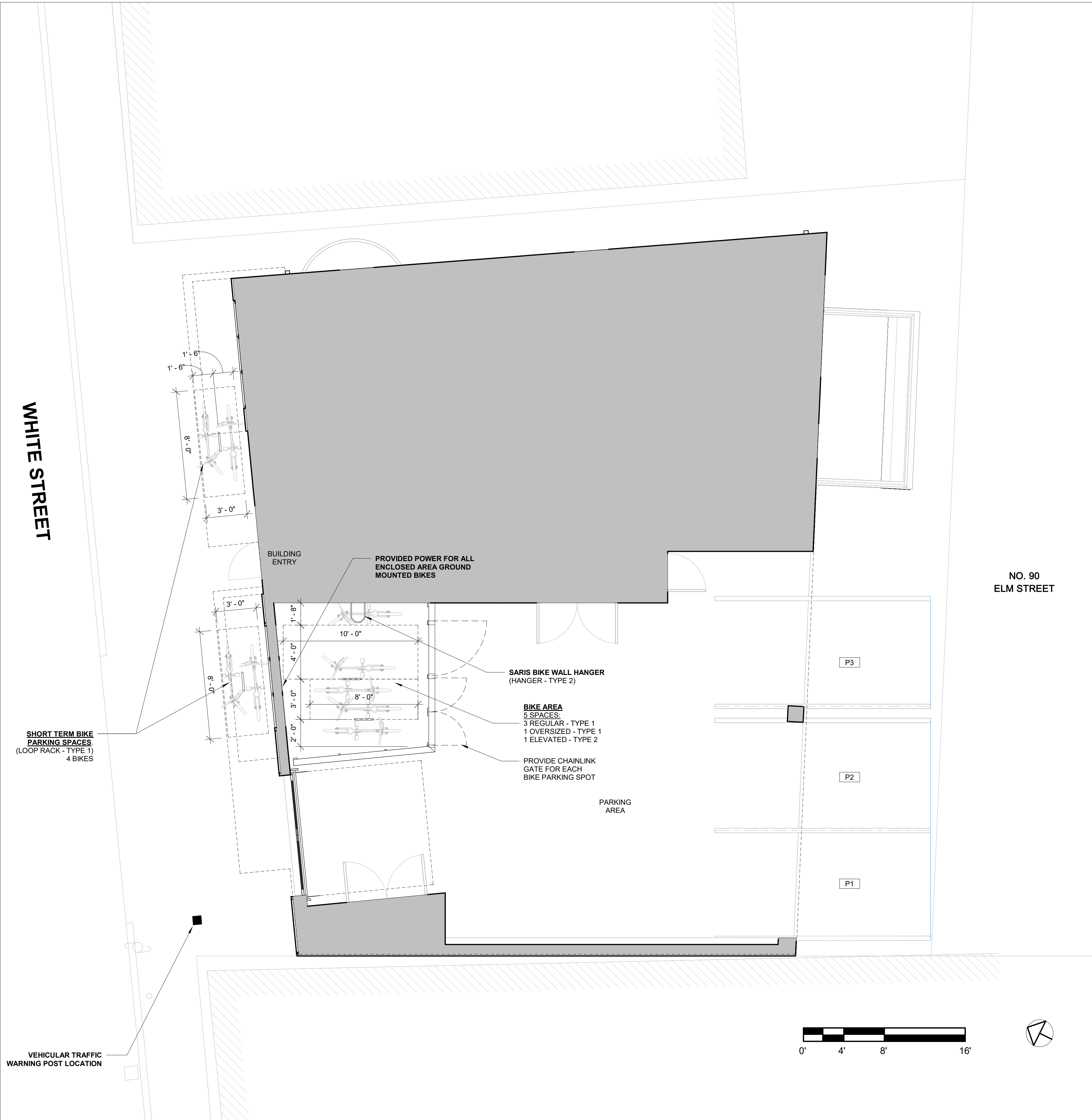
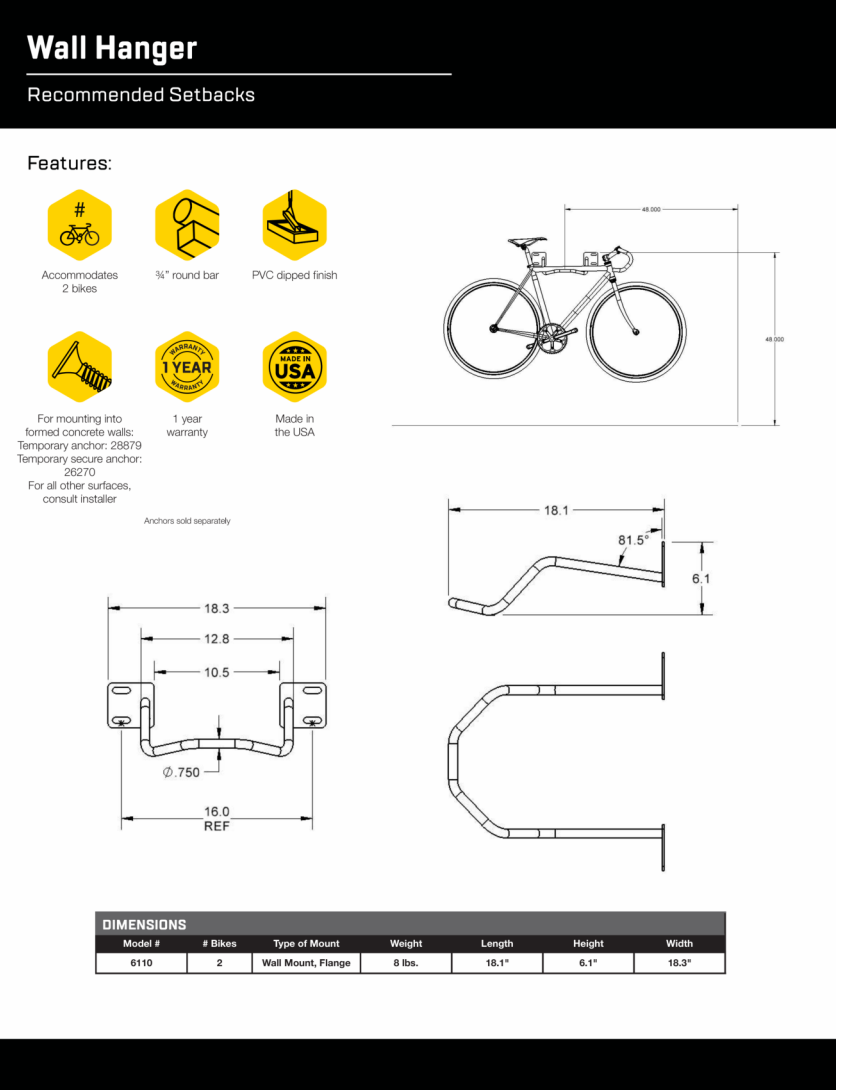
FINISH OPTIONS



MOUNT OPTIONS



TYPE 2



1 PROPOSED SITE PLAN - BIKE PARKING
1/4" = 1'-0"

PROJECT NAME

**44 WHITE STREET
RESIDENCES**

PROJECT ADDRESS

**44 WHITE STREET,
SOMERVILLE, MA**

CLIENT

JACOB SIMMONS

ARCHITECT



ARCHITECTURE

KHALSA DESIGN, INC.
17 IVALOO STREET SUITE 400
SOMERVILLE, MA 02143

TELEPHONE: 617-591-8882

CONSULTANTS:

COPYRIGHT KDI © 2025
THESE DRAWINGS ARE NOW AND DO
REMAIN THE SOLE PROPERTY OF KHALSA
DESIGN INC. USE OF THESE PLANS OR ANY
FORM OF REPRODUCTION OF THIS DESIGN
IN WHOLE OR IN PART WITHOUT EXPRESS
WRITTEN CONSENT IS PROHIBITED AND
SHALL RESULT IN THE FULLEST EXTENT
OF PROSECUTION UNDER LAW

REGISTRATION

Project number	24025
Date	12/08/2025
Drawn by	NB_RR
Checked by	TMC
Scale	1/4" = 1'-0"

REVISIONS

No.	Description	Date

**BIKE PARKING
PLAN**

A-020.2

44 WHITE STREET RESIDENCES