

Middlesex Ave Quick-Build Protected Bike Lanes

Traffic Commission Proposal

September 18, 2025

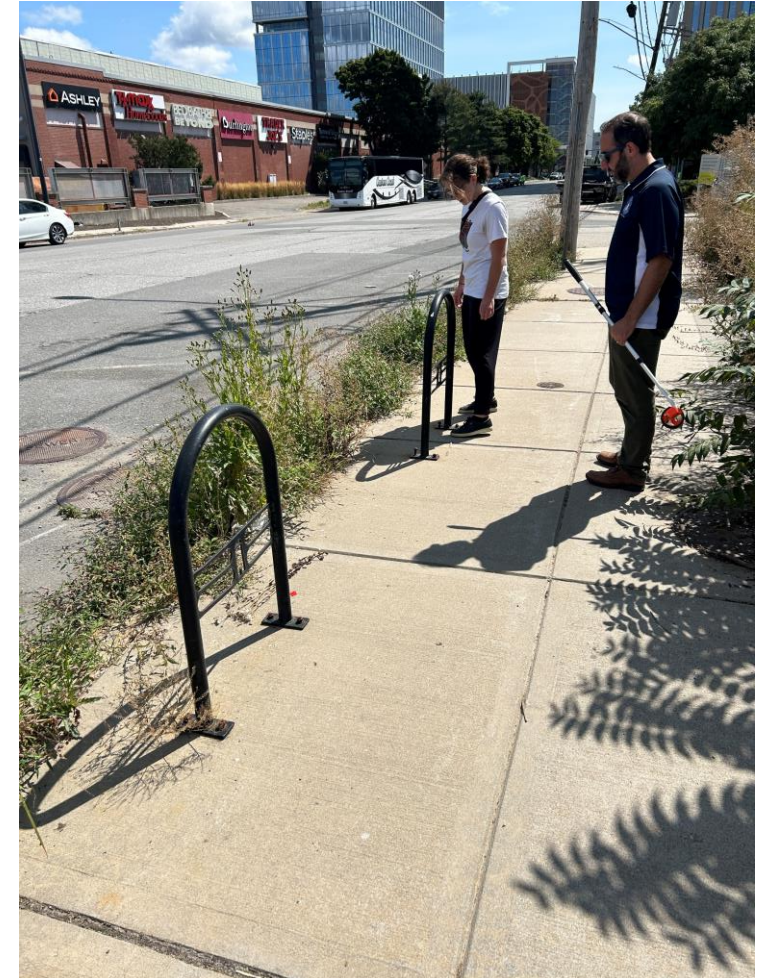
Project Overview



- The City has received funding through the participatory budget process to implement protected bike lanes on corridors that are not on the city's priority bike network. Middlesex Ave is a good candidate for redesign, not only because it is a wide street with frequent speeding and minimal striping or parking regulations, but because development continues to take place along Middlesex and it is important to make sure that the street meets the demands of the shifting land uses
- This project is quick-build, meaning that it will be done with only signs, paint, and flex posts. The primary goals are to add protected bike lanes in both directions and narrow travel lanes and intersections along the corridor to reduce speeding behavior and improve safety for all users. Changes will also be made to the traffic signal at Middlesex and Foley to improve the experience and hopefully decrease delay for all users

Coordination, Outreach, and Next Steps

- Mobility has led the project design effort with feedback and support from SFD, DPW, Parking, and Engineering. We've also shared these plans with and received feedback from both the Somerville Bicycle Advisory Committee and the Pedestrian and Transit Advisory Committee. Draft plans were released in July on a dedicated project page (<https://voice.somervillema.gov/middlesexavenue>) and promoted through the Mobility Division's monthly newsletter
- Pending Traffic Commission approval, flyers will be posted on sign posts and utility poles the week of 9/22 to raise awareness for those that walk along the corridor. The Mobility Division also aims to connect with the Assembly TMA, East Somerville Main Streets, Somerville District Court, and Mama Ana Latin-Brazilian Cuisine prior to the start of implementation. A city alert will also be sent out to the immediate surrounding area prior to start of implementation



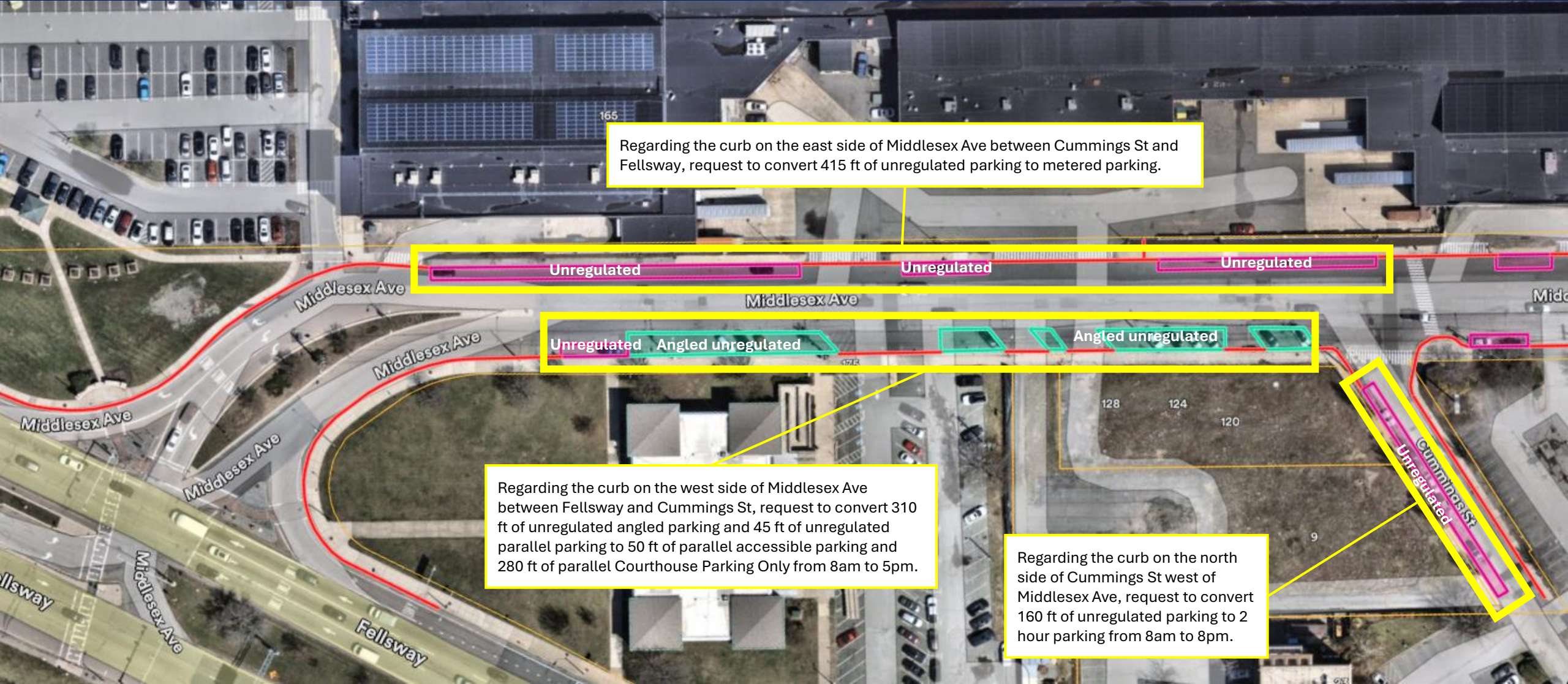
On-Street Parking Impacts

- While we intend to retain on-street parking on both sides of the street, there will be a minor impact on the total number of available spaces. However, most of the parking that exists today is unregulated and we will be adding standard city regulations to better meet the needs of the surrounding land uses
- In addition to the changes on Middlesex Ave, 8 unregulated spaces on Cummings St and 9 two hour except by permit spaces on McGrath Hwy are proposed to be converted to 2 hour parking from 8 AM to 8 PM

Middlesex Ave On-Street Parking	Existing	Proposed
Unregulated Parallel	38	0
Unregulated Angled	23	0
Metered	17	44
Accessible	1	3
Loading Zone	2	2
Courthouse Parking Only (8am to 5pm)	0	15
Fire Department Parking Only	0	4
Total	81	68

Middlesex Avenue – Fellsway to Cummings St

Existing Condition and Requested Changes



Regarding the curb on the east side of Middlesex Ave between Cummings St and Fellsway, request to convert 415 ft of unregulated parking to metered parking.

Unregulated

Unregulated

Unregulated

Unregulated

Angled unregulated

Angled unregulated

Regarding the curb on the west side of Middlesex Ave between Fellsway and Cummings St, request to convert 310 ft of unregulated angled parking and 45 ft of unregulated parallel parking to 50 ft of parallel accessible parking and 280 ft of parallel Courthouse Parking Only from 8am to 5pm.

Regarding the curb on the north side of Cummings St west of Middlesex Ave, request to convert 160 ft of unregulated parking to 2 hour parking from 8am to 8pm.

Unregulated

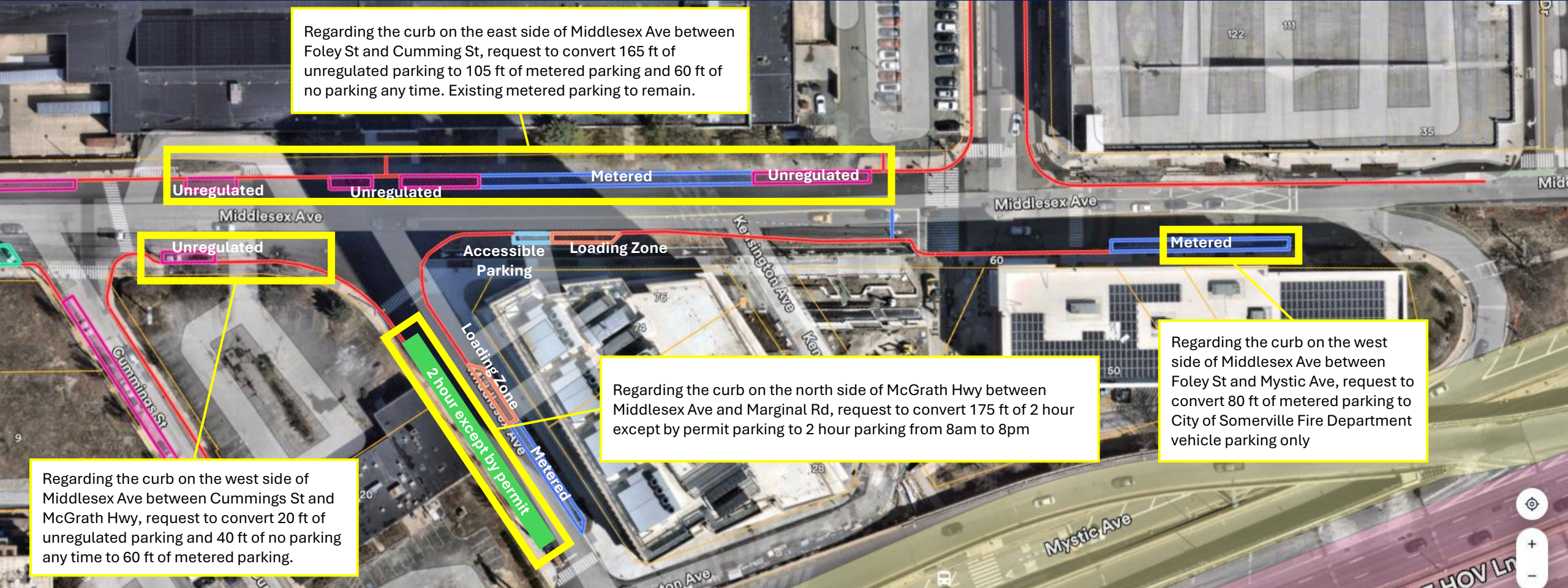
Middlesex Avenue – Fellsway to Cummings St

Proposed Condition



Middlesex Avenue – Cummings St to Mystic Ave

Existing Condition and Requested Changes



Middlesex Avenue – Cummings St to Mystic Ave

Proposed Condition



Middlesex Avenue Agenda Language

- Regarding the curb on the west side of Middlesex Ave between Fellsway and Cummings St, request to convert 310 ft of unregulated angled parking and 45 ft of unregulated parallel parking to 50 ft of parallel accessible parking and 280 ft of parallel Courthouse Parking Only from 8am to 5pm.
- Regarding the curb on the north side of Cummings St west of Middlesex Ave, request to convert 160 ft of unregulated parking to 2 hour parking from 8am to 8pm.
- Regarding the curb on the east side of Middlesex Ave between Cummings St and Fellsway, request to convert 415 ft of unregulated parking to metered parking.
- Regarding the curb on the west side of Middlesex Ave between Cummings St and McGrath Hwy, request to convert 20 ft of unregulated parking and 40 ft of no parking any time to 60 ft of metered parking.
- Regarding the curb on the north side of McGrath Hwy between Middlesex Ave and Marginal Rd, request to convert 175 ft of 2 hour parking except by permit to 2 hour parking from 8am to 8pm.
- Regarding the curb on the west side of Middlesex Ave between Foley St and Mystic Ave, request to convert 80 ft of metered parking to City of Somerville Fire Department vehicle parking only.
- Regarding the curb on the east side of Middlesex Ave between Foley St and Cumming St, request to convert 165 ft of unregulated parking to 105 ft of metered parking and 60 ft of no parking any time. Existing metered parking to remain.