

Somerville Ave @ Union
Square Bus Stop

Somerville Ave @ Union Square Bus Stop

Background

- The existing MBTA bus stop #2510 Somerville Ave @ Union Square is located inside a signalized intersection with Warren Ave.
- MBTA's Service Planning department has received complaints from Bus Operations regarding the safety and operations of this stop.
 - Operators cannot see the traffic signal when at the bus stop.
 - The bus stop is not long enough to reach the curb and accessibly load/unload passengers while leaving enough room to pull out.
 - The bus stop is not long enough to shift left approximately 25 feet after stopping, across a bike lane, buffer, and travel lane to reach the left lane while approaching the signalized intersection with Somerville Ave less than 150' feet ahead.
 - Buses often are required to stop on crosswalks while they have a walk signal in order to adequately service the stop.

Somerville Ave @ Union Square Bus Stop

Background



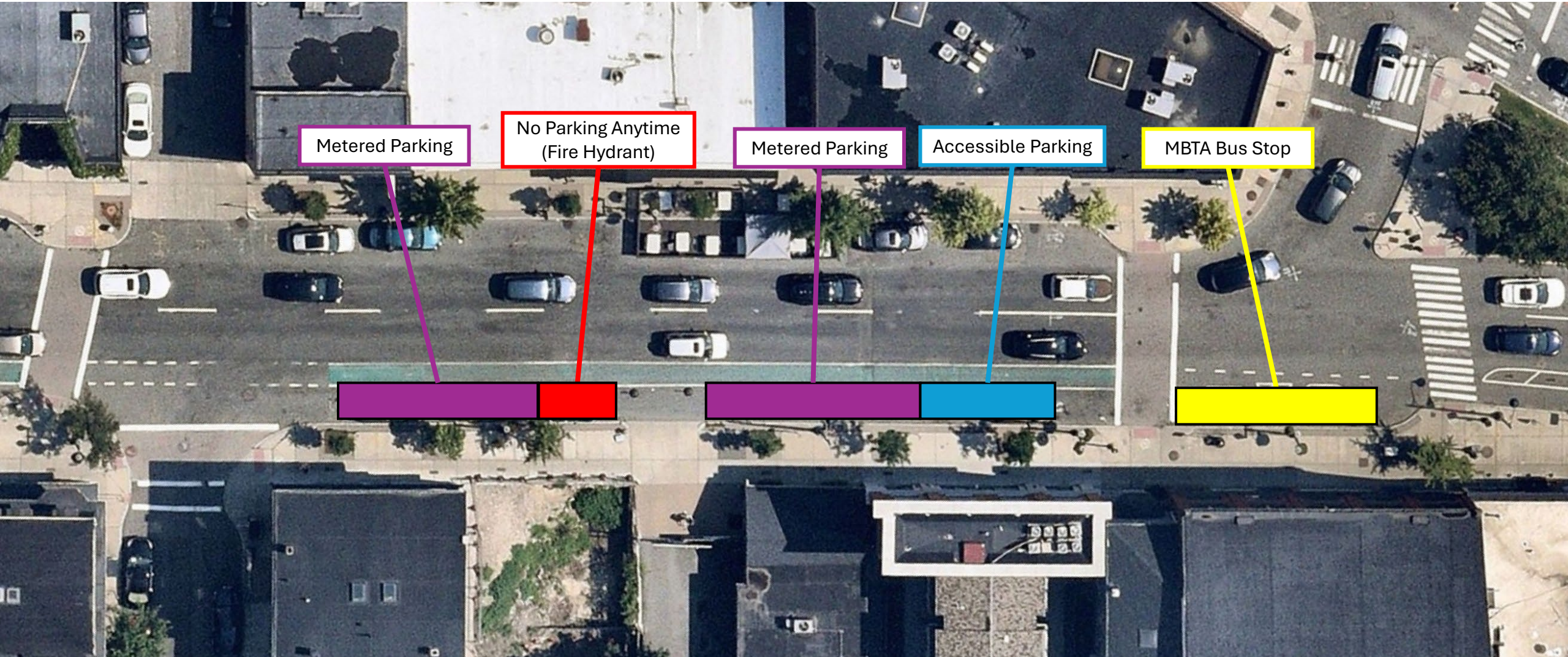
Somerville Ave @ Union Square Bus Stop

Background

- In June of 2025, MBTA Service Planning formally requested the stop be relocated behind the stop line.
- The new stop location that meet's MBTA guidelines with the fewest impacts on existing parking areas is on the far side of Hawkins Street, replacing two parking meter spaces.
- This change is proposed to address an immediate safety issue. However, the Mobility Division is undertaking a [quick-build project of Somerville Ave](#) further west, and will be evaluating bus stops along Somerville Ave to consider bus stop spacing, length, and potential consolidation.

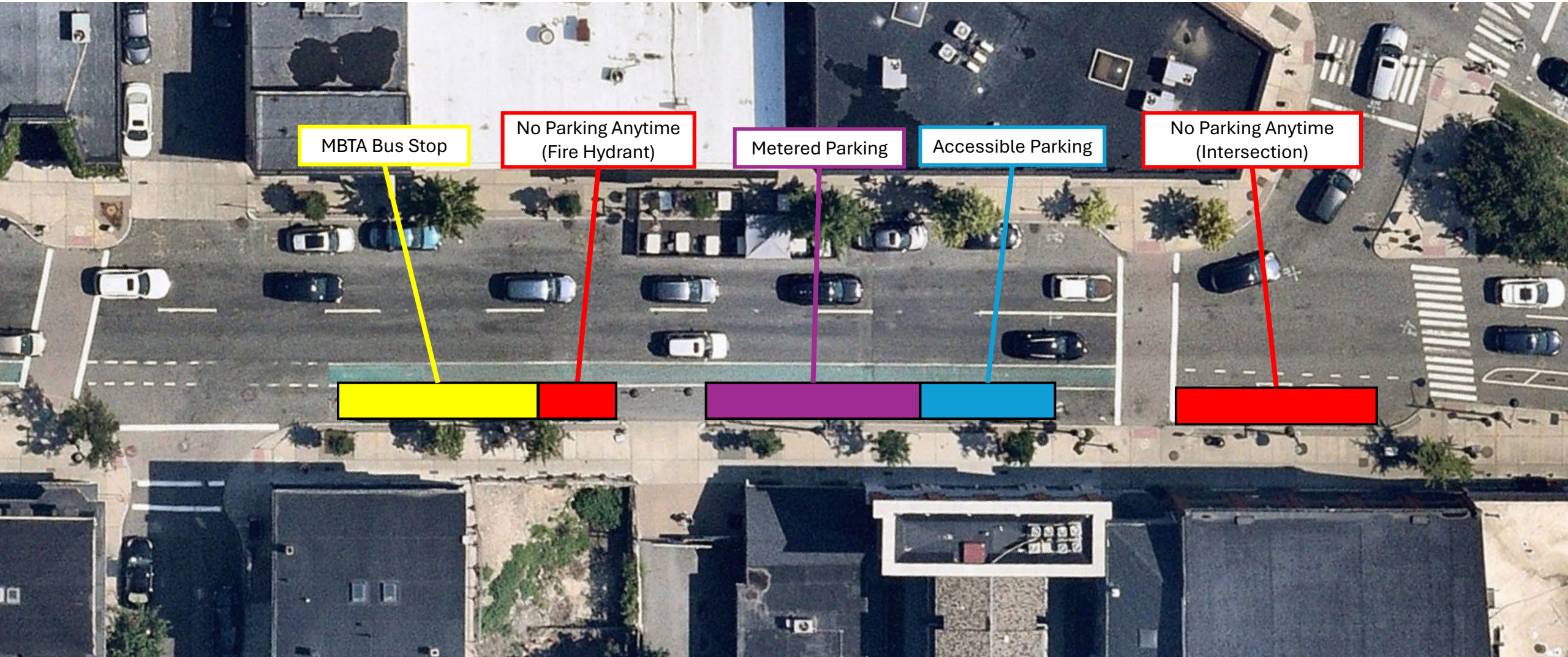
Somerville Ave @ Union Square Bus Stop

Existing Regulations – Somerville Ave east of Hawkins St



Somerville Ave @ Union Square Bus Stop

Proposed Regulations – Somerville Ave east of Hawkins St



Somerville Ave @ Union Square Bus Stop

Agenda Language

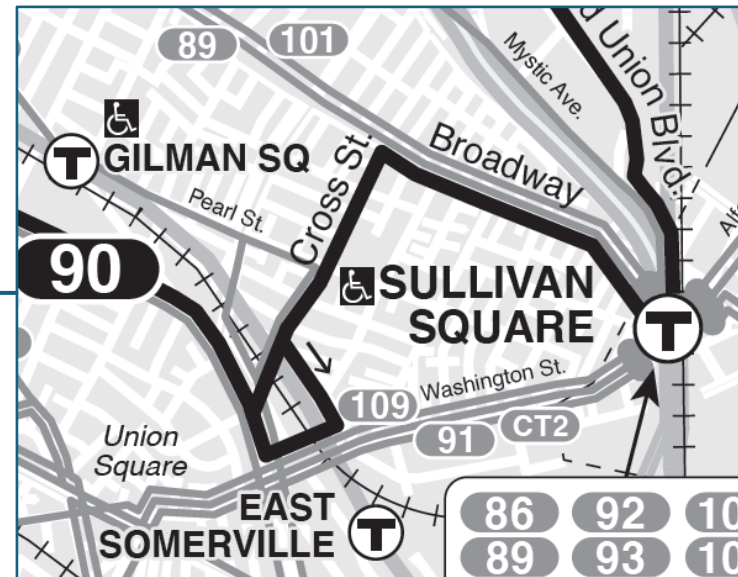
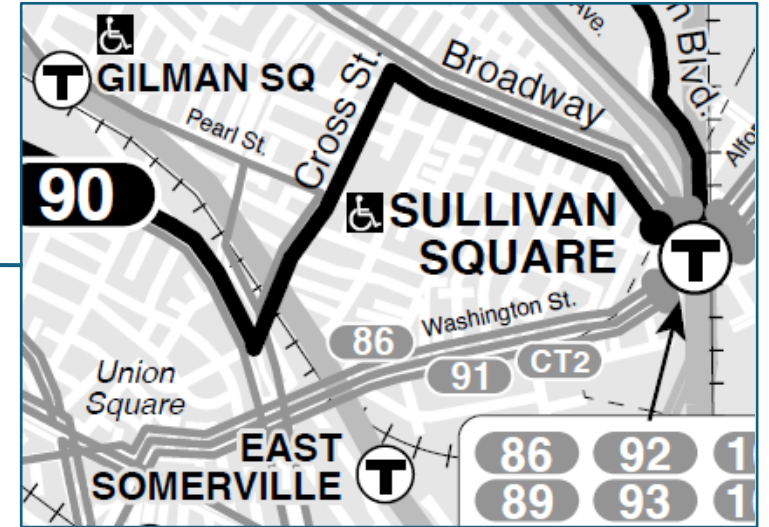
- Regarding the curb on the south side of Somerville Ave between Hawkins St and Warren Ave, request to convert approximately 45 feet of Metered Parking to No Parking Anytime for a Bus Stop.

Cross Street @ Broadway Bus Stops

Cross Street @ Broadway Bus Stops

MBTA Route 90 Background

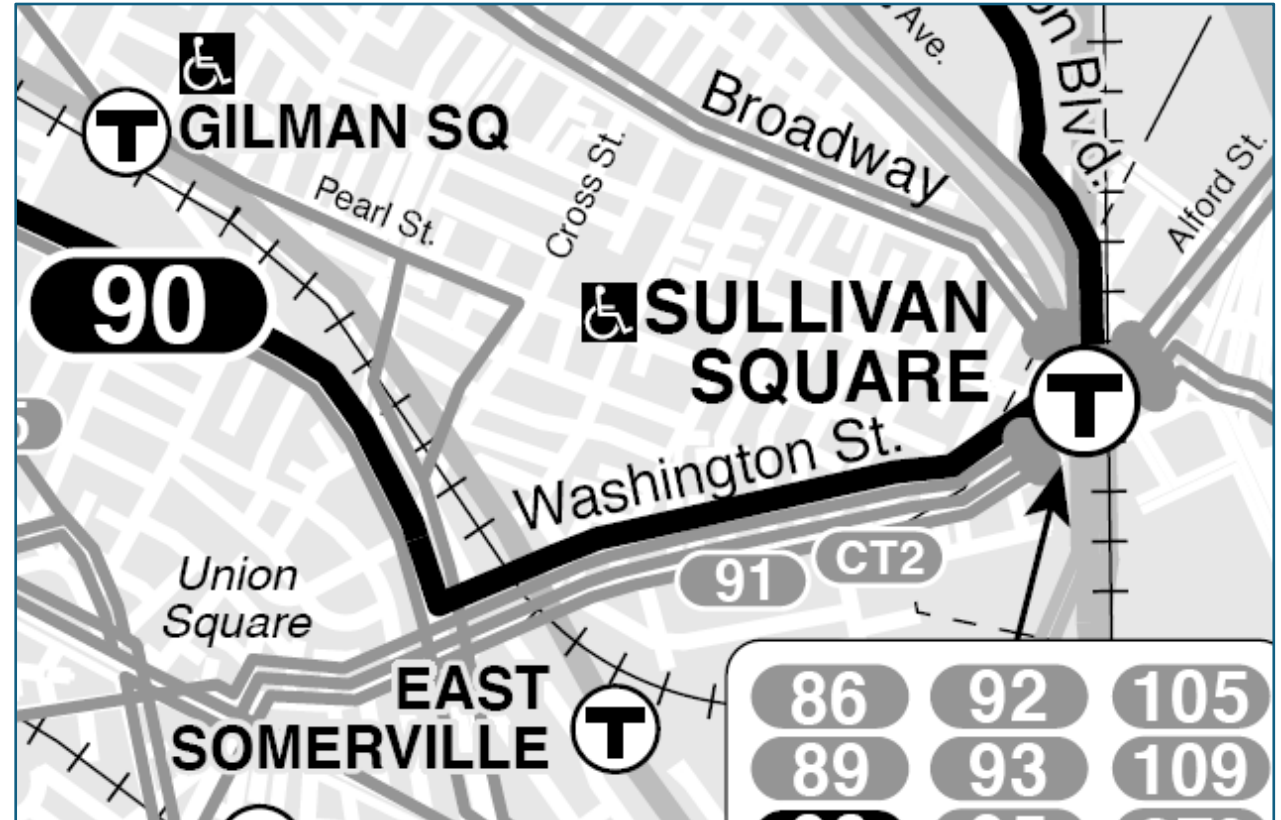
- MBTA route 90 originally ran down the full length of Cross St
- From Fall 2023 – Spring 2025 the outbound 90 was relocated to travel down Tufts St to make a closer connection to the East Somerville Green Line Station (McGrath @ Allston St)



Cross Street @ Broadway Bus Stops

MBTA Route 90 Background

- In Summer 2025 the 90 was changed to omit Cross St and Tufts St due to a redesigned Tufts St that can no longer support bus travel as well as challenges navigating Cross St.
- The 90 bus instead traveled down Wahington St and was able to connect closer to the East Somerville Green Line Station.



Cross Street @ Broadway Bus Stops

MBTA Route 90 Background

- The MBTA and the City received substantial community advocacy against to this change and its impacts on the East Somerville Community School and Winter Hill School (@ Edgerly) communities as well as the East Broadway business district.
- Somerville's Pedestrian & Transit Advisory Committee discussed the 90 Bus changes at their May and June monthly meetings and on June 15, 2025 [wrote to the city and the MBTA](#) to advocate for restoring service on Cross St, highlighting the impacts to school communities and the adjacent Environmental Justice communities.



June 15, 2025

MBTA Better Bus Project & Service Planning Teams
10 Park Plaza
Boston, MA 02116

Dear MBTA Better Bus Project and Service Planning Teams,

Thank you for the opportunity to provide feedback on the changes to bus route 90 in East Somerville, scheduled to go into effect today. These changes will eliminate bus service along Broadway, Cross St, and Tufts St, routing the 90 instead down Washington St. This change, which has been confusingly attributed to the [Tufts St Reconstruction](#) and less confusingly to operational difficulties on Cross St, will negatively affect East Somerville residents and school communities. The latter of these groups has already endured significant hardship with the closure of the Winter Hill Community Innovation School in 2023, which has displaced students to the Edgerly Education Center until at least 2031. Given these hardships, PTAC recommends that the MBTA bring the 90 back to Cross St and Broadway in the next schedule update in order to restore vital service to these portions of East Somerville in time for the 2025-26 school year.

Relationship between Bus Route 90, Tufts St, and Cross St

The MBTA has attributed the rerouting of the 90 bus to the design of planned enhancements on Tufts St, in keeping with the designation of Tufts St as a Neighborway in the Priority Network of the [Somerville Bicycle Network Plan](#). The Tufts St design process began in 2022 and construction will begin later this summer. In

Cross Street @ Broadway Bus Stops

MBTA Route 90 Background

- On June 13th 2025 Mayor Ballantyne, MBTA GM Phillip Eng, and staff from the city and MBTA staff walked Tufts St, Cross St, and Broadway to discuss these concerns.
- Following community and City advocacy, the MBTA agreed to return service to Cross St provided that Somerville improve travel conditions for the bus on Cross St, especially at the intersection with Broadway.



Cross Street @ Broadway Bus Stops

MBTA Route 90 Background

- Over the summer, staff have:
 - Added flex posts to no parking areas at intersections
 - Made pavement marking changes to Cross St at Broadway
 - Relocated stop bar
 - Added a painted median to provide more turning space
 - Lengthened bus stops to meet MBTA standards, impacting four parking spaces.
- On August 24th the 90 bus returned to Cross St.



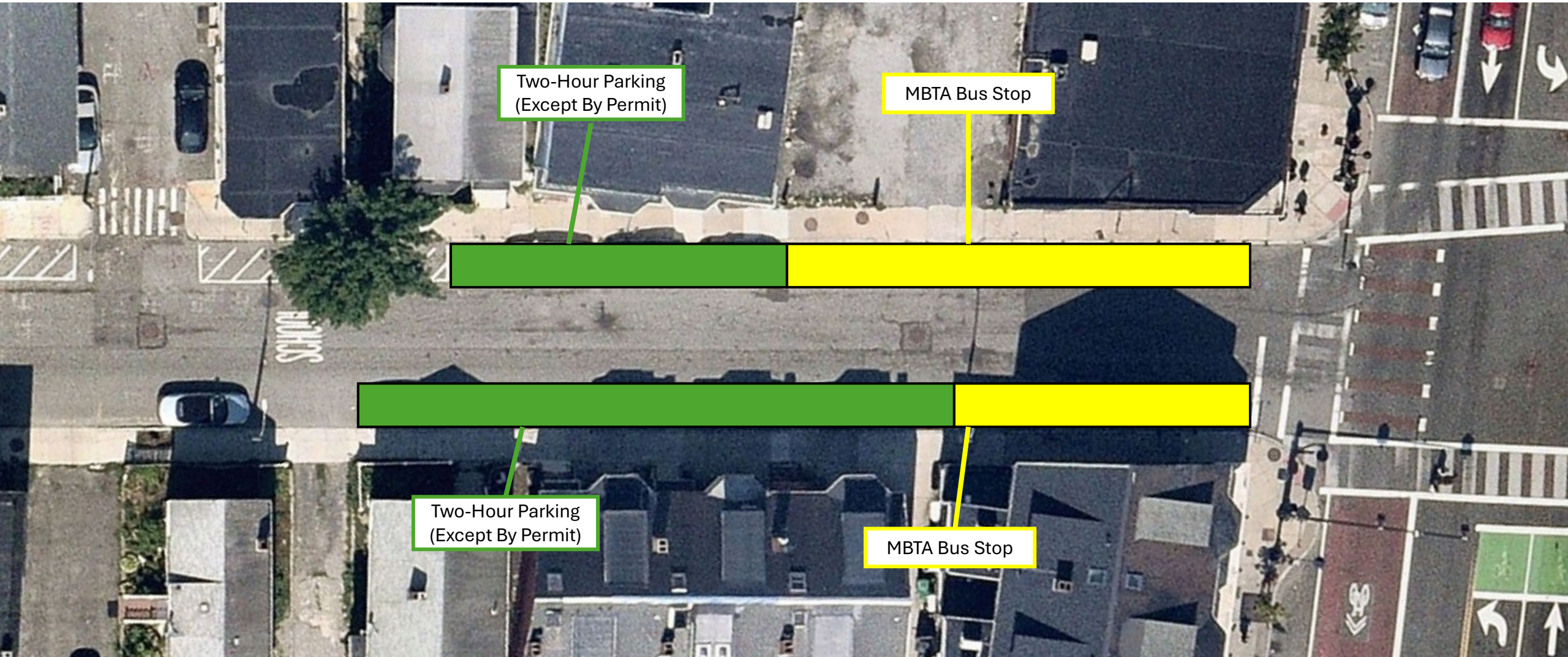
Cross Street @ Broadway Bus Stops

MBTA Route 90 Background

- This change is not the end of the conversation about the 90 bus routing.
- The Bus Network Redesign proposes combining the Routes 88 and 90 to reduce duplication and increase connectivity east-west across Somerville. The new routing follows the 90 bus existing routing to Assembly.
- The MBTA will require an accessible connection to the Green Line in Somerville to replace the existing 88 bus connection to Lechmere. This connection can no longer be to East Somerville Station via Tufts St and street slopes along Highland Ave do not support a connection to Gilman Square Station.
- MBTA has committed to additional conversations with riders and the public about future changes to 90 and 88 bus service before making moving forward with the proposed consolidation.

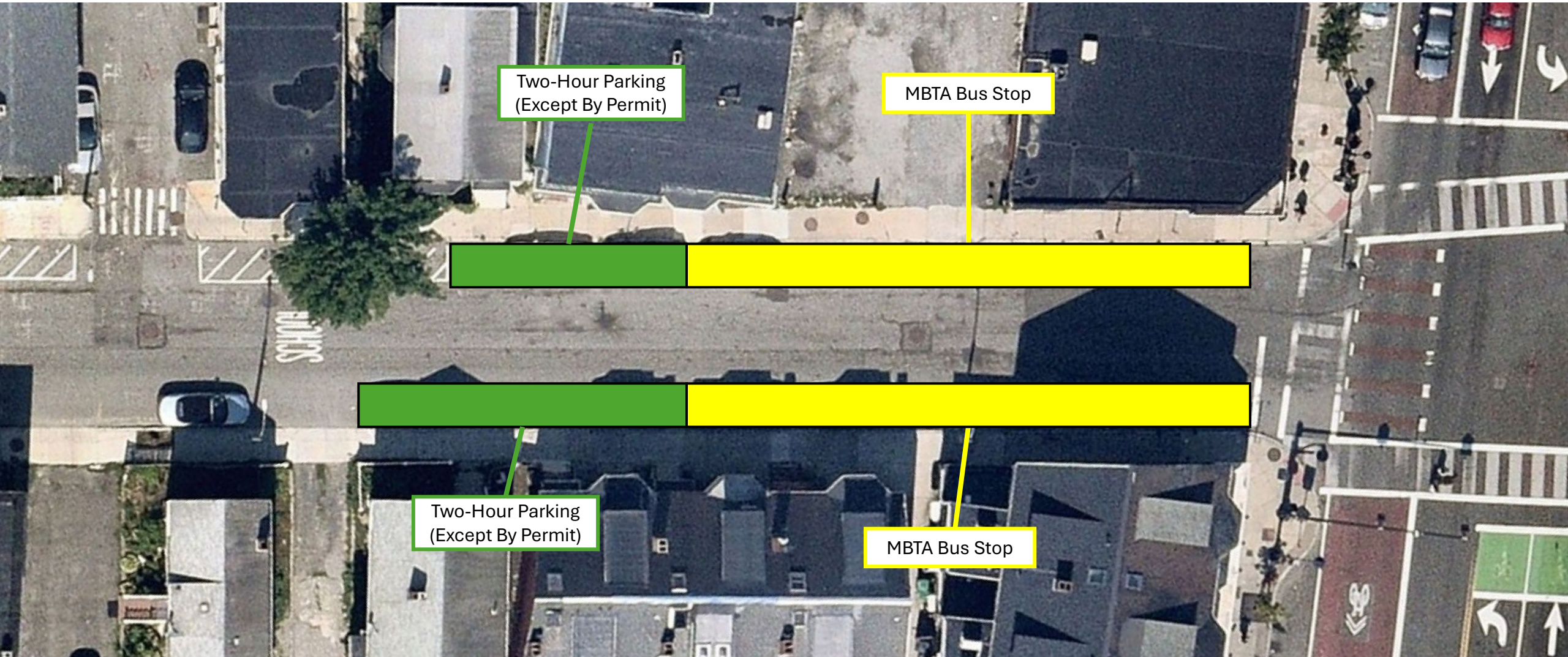
Cross Street @ Broadway Bus Stops

Existing Regulations – Cross St south of Broadway



Cross Street @ Broadway Bus Stops

Proposed Regulations – Cross St south of Broadway



Cross Street @ Broadway Bus Stops

Agenda Language

- Regarding the curb on the west side of Cross St between Broadway and Randolph Pl, request to convert approximately 20 feet of Two-Hour Parking (Except by Permit) to No Parking Anytime for a Bus Stop.
- Regarding the curb on the east side of Cross St between Broadway and Brook St, request to convert approximately 50 feet of Two-Hour Parking (Except by Permit) to No Parking Anytime for a Bus Stop.

Maffa Way/Mystic Avenue Bridge Superstructure Replacements Project

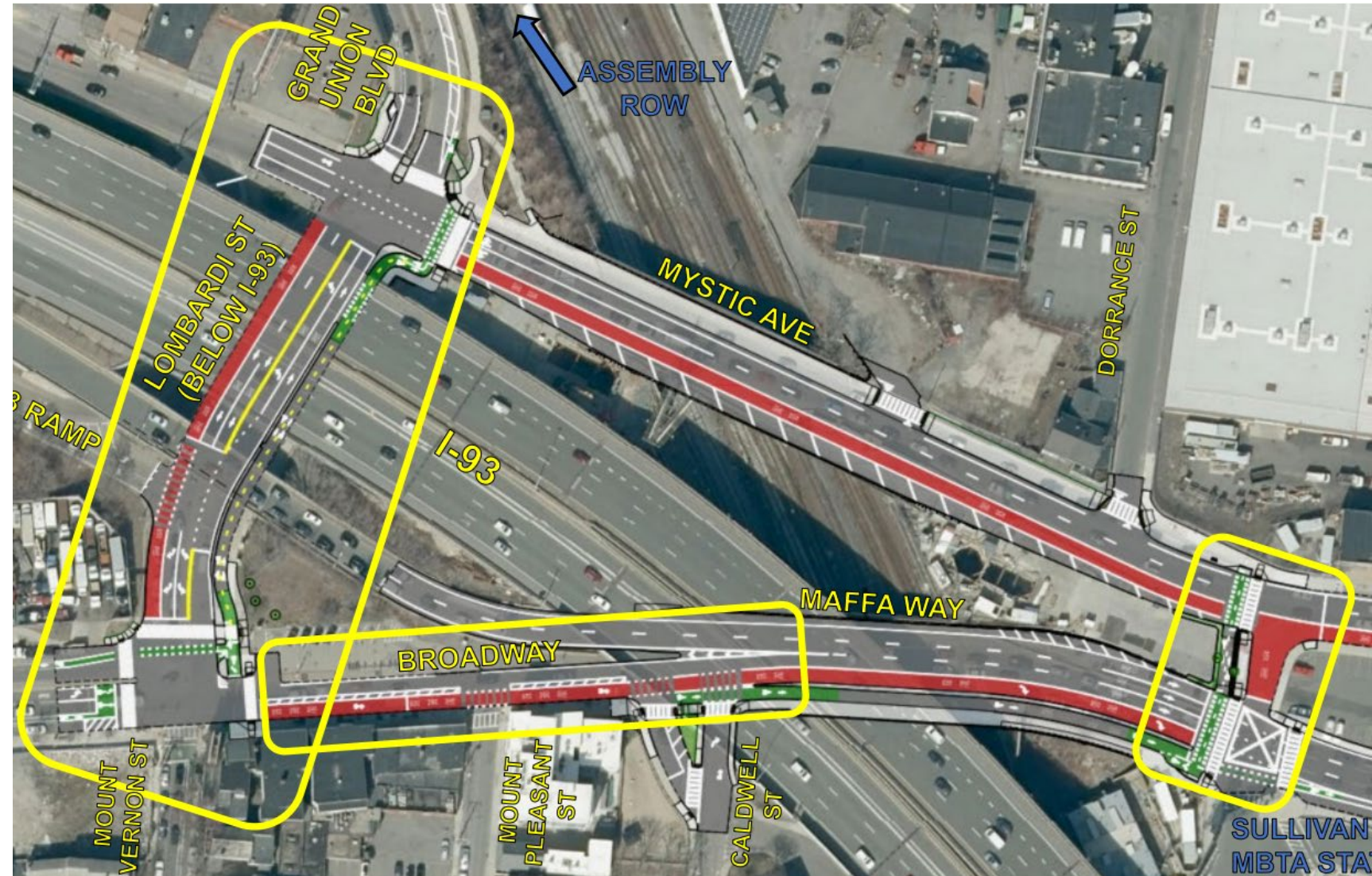
Maffa Way/Mystic Avenue Bridge Superstructure Replacements Project Overview

- The Maffa Way Bridge & Mystic Avenue Bridge carry vehicle, bicycle, pedestrian, and transit traffic over the MBTA's Orange Line and Commuter Rail in Boston and Somerville.
- MassDOT is replacing both bridge structures and improving bicycle, pedestrian, and transit facilities.



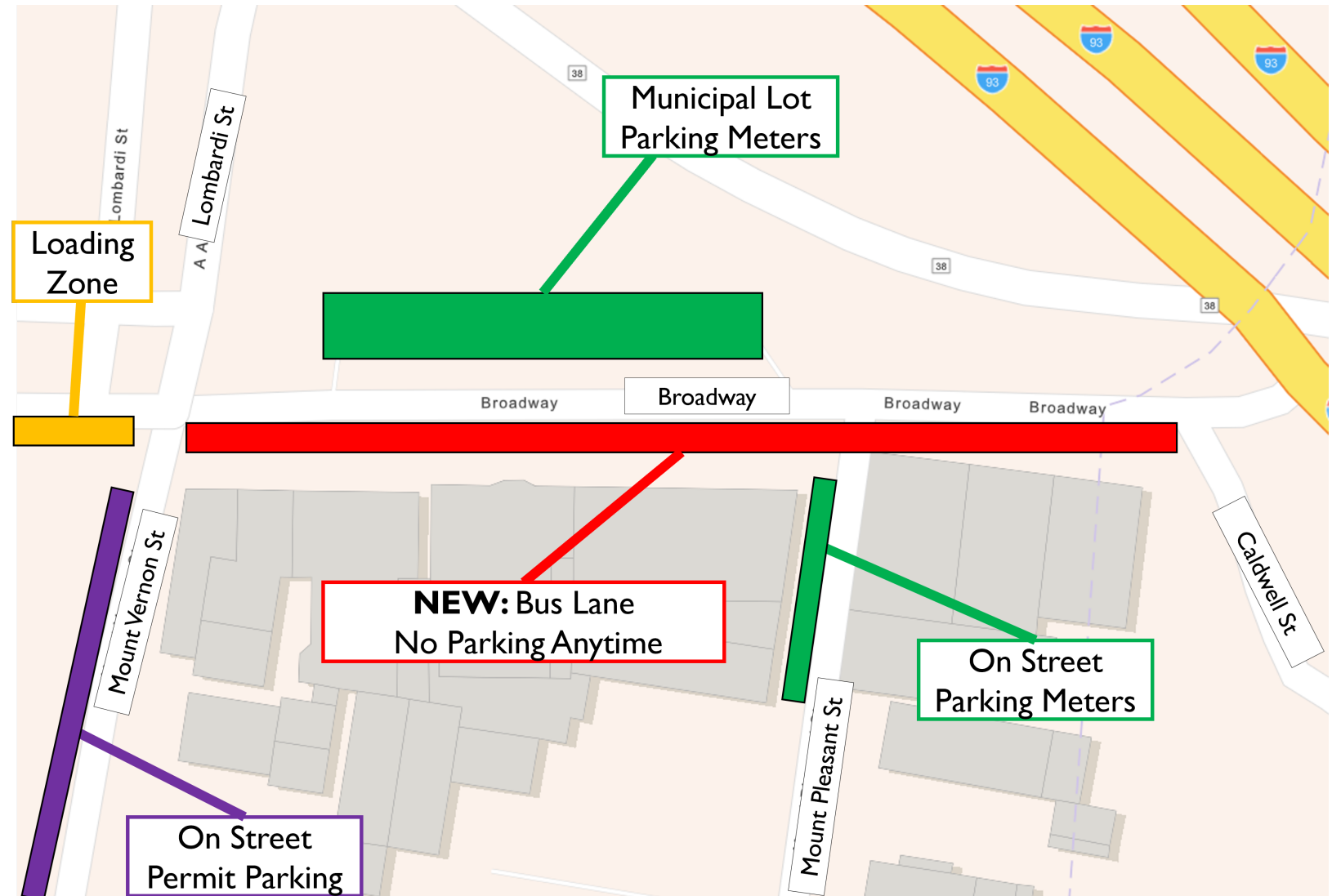
Maffa Way/Mystic Avenue Bridge Superstructure Replacements Project Overview

- Improved transit, pedestrian, and bicycle connections were incorporated into this bridge project at this key connection between Somerville and Boston.
- MassDOT developed circulation concept that includes bus lanes on Broadway/Maffa Way, Mystic Ave, and Lombardi St.



Maffa Way/Mystic Avenue Bridge Superstructure Replacements Project Overview


- Bus lanes are proposed to replace nine parking spaces on Broadway from Mount Vernon St to Caldwell St.
- This bus lane will improve the speed, reliability, and efficiency of the route 89, 90, 95, and 101 buses accessing Sullivan Square.
- This bus lane will also accommodate a future fifth bus route and higher frequencies on multiple routes as part of the MBTA's Bus Network Redesign project.



Maffa Way/Mystic Avenue Bridge Superstructure Replacements Project


Summary of Community Engagement

- March 2022 – MassDOT Design Public Hearing
- January 2025 – MassDOT Public Information Meeting
- February 2025 – MassDOT Public Information Meeting
- February 2025 – Somerville Pedestrian & Transit Advisory Committee Presentation
- May 2025 – MassDOT Public Information Meeting
- August 2025 – MassDOT project team flyers homes and businesses
- August 2025 – Somerville Mobility Business Block Walking
- September 25, 2025 - Somerville Mobility Division to attend ESMS Monthly Business Meeting




The City of Somerville
Mayor Katjana Ballantyne
Office of Strategic Planning & Community Development

East Broadway Bus Improvements and Parking Changes coming Fall 2025/ Spring 2026



Learn more about the design and anticipated construction by visiting mass.gov/maffa-waymystic-avenue-bridge-superstructure-replacements



What changes are coming?

The Massachusetts Department of Transportation (MassDOT) is replacing the Broadway/Maffa Way Bridge and the Mystic Avenue Bridge that carry vehicle, bicycle, pedestrian, and transit traffic over the MBTA's Orange Line and Commuter Rail into and out of Sullivan Square Station.


As a part of this project, a loop of bus lanes is being created on Broadway, Lombardi Street, and Mystic Avenue.

The bus lane will replace on-street parking on Broadway from Mt. Vernon Street to Caldwell Street.

What is the purpose?

- To improve the speed, reliability, and efficiency of the route 89, 90, 95, and 101 buses accessing Sullivan Square.
- To accommodate a future fifth bus route and higher frequencies as part of the MBTA's Bus Network Redesign project.

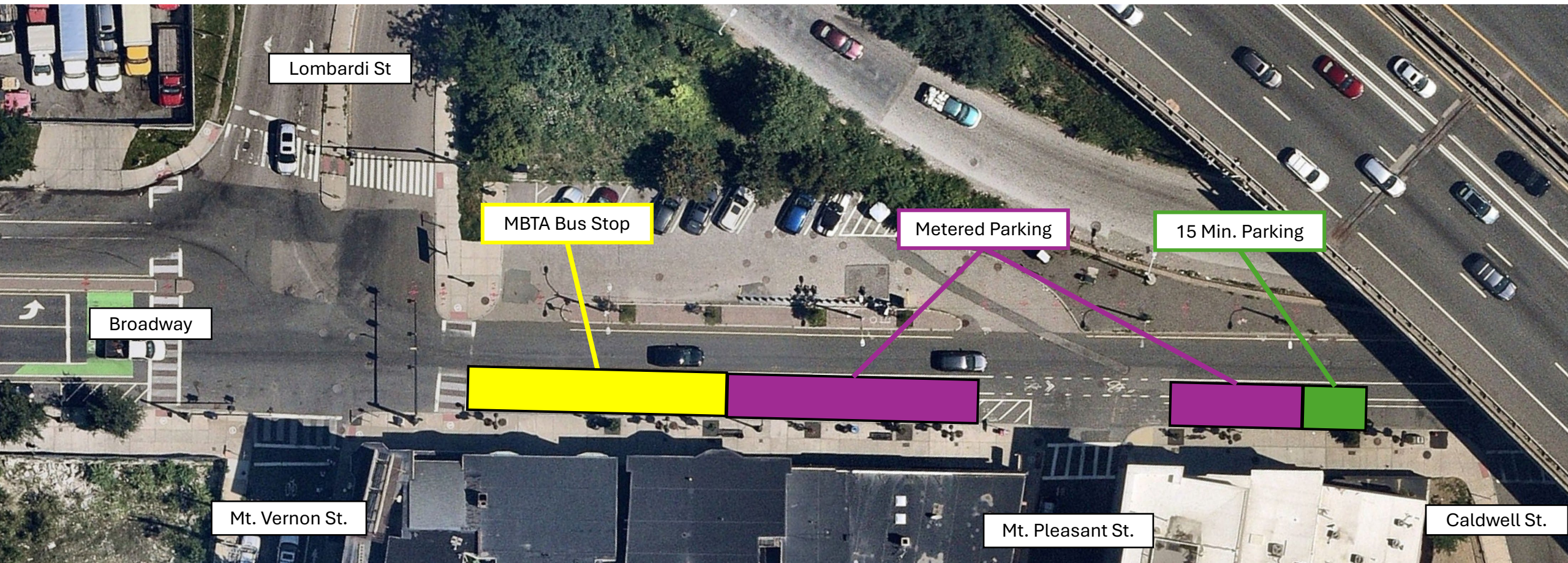
If you have any questions, email transportation@somervillema.gov or call 311 (617-666-3311).



Persons with disabilities who need ADA accommodations to access this information, please contact 311 (617-666-3311). To request this information in another language, please contact somerviva@somervillema.gov or call 311 (617-666-3311).

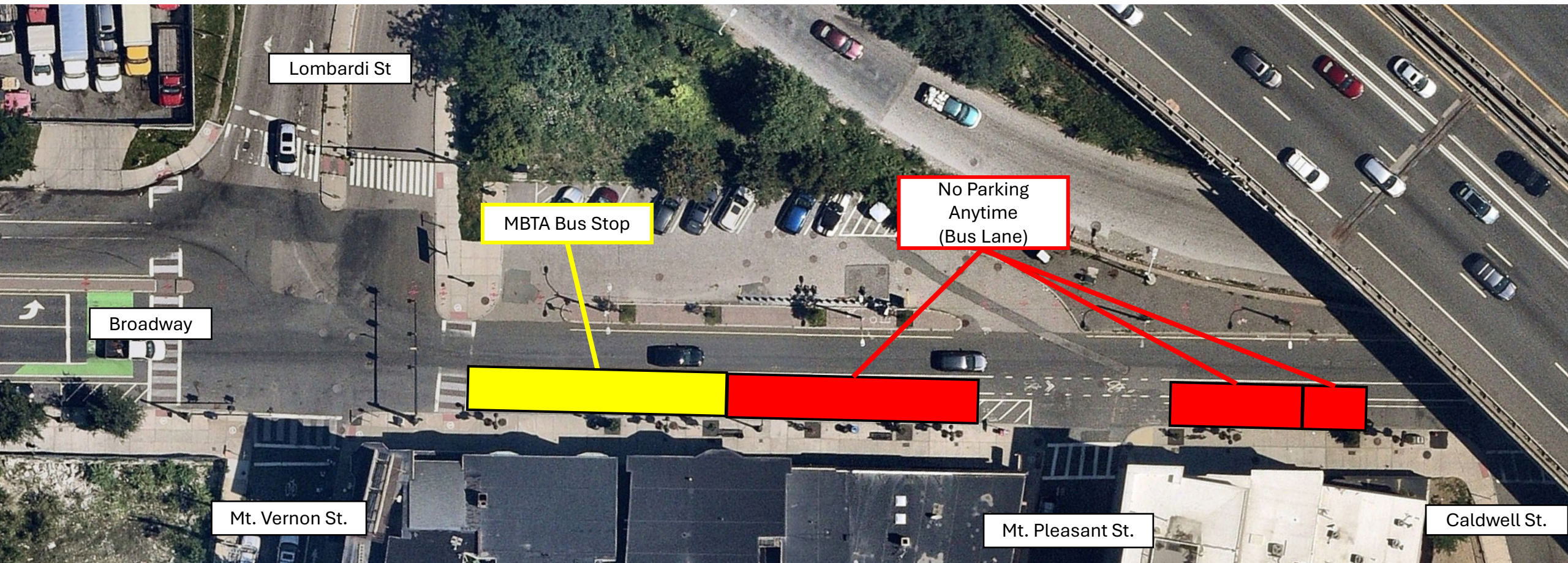
Maffa Way/Mystic Avenue Bridge Superstructure Replacements Project

Existing Regulations – Broadway from Mt. Vernon St to Caldwell St



Maffa Way/Mystic Avenue Bridge Superstructure Replacements Project

Proposed Regulations – Broadway from Mt. Vernon St to Caldwell St



Maffa Way/Mystic Avenue Bridge Superstructure Replacements Project

Agenda Language

- Regarding the curb on the south side of Broadway between Mt. Vernon St and Mt. Pleasant St, request to convert approximately 115 feet of Metered Parking to No Parking Anytime.
- Regarding the curb on the south side of Broadway, east of Mt. Pleasant St, request to convert approximately 40 feet of Metered Parking and 20 feet of 15-Minute Parking to No Parking Anytime.