



## City Update July 2025 PTAC Meeting



# Agenda

- Route 90 Update
- Transit/Pedestrian focused construction updates
- Middlesex Avenue Quick-Build Protected Bike Lanes



*Above: A commuter rail locomotive headed inbound as seen from Walnut Street.*



# MBTA Route 90 Update

- **Thank you for your efforts advocating for route 90 bus riders in the City.**
- Last month the Mayor met with MBTA leadership to share our community members' concerns and describe the impact these changes will have on residents, particularly students and their families from the Winter Hill at Edgerly, East Somerville Community School, Capuano Early Childhood Center, Somerville High School and Prospect Hill Academy.
- **We are excited to share that the MBTA Route 90 will be returning to Cross Street this fall in time for the new school year.**
- To improve the bus experience on Cross Street, the City is committed to making changes that help bus operations. This could include items adjusting signage and pavement markings, adding flex posts in no parking zone, and removing a small number of parking spaces near Broadway to make sure the bus can turn more easily onto Cross St.
- The City aims to implement these interventions in time for the Fall 2025 bus schedule.
- **The 90 bus will no longer travel on Tufts Street and will utilize McGrath Highway for routing to and from Highland Avenue.**

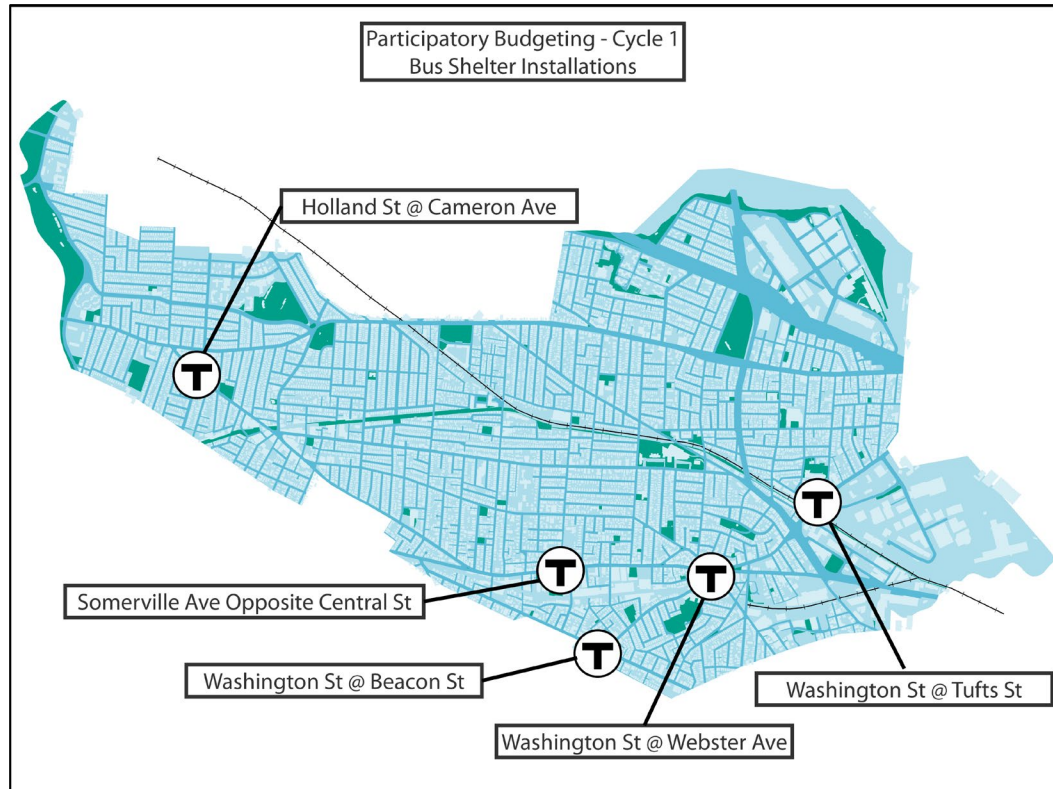


*Above: Mayor Ballantyne and Director of Mobility Brad Rawson walk Cross St with MBTA leadership.*



# Participatory Budgeting Funded Bus Shelters

- Shelter installations began this month, starting with the Washington Street at Webster Avenue bus stop. Shelters will continue to be installed on a rolling basis over the summer and fall
- Shelters include benches and lighting



*At left: PB Funded Shelter Locations*

*Above: New bus shelter on Washington Street west of Webster Avenue*



# MBTA Funded Bus Shelters

- In addition to shelters funded by Participatory budgeting, the MBTA has a small number of shelter installations and replacements being completed in Somerville
- This work includes one new shelter in Somerville Ave in Union Square, opposite of the existing shelter on Union Square Plaza.
- This work also includes two replacement shelters: (1) at 299 Broadway and (2) on westbound Highland Avenue at Walnut Street in front of Falkner Towers.
- The new shelter on Highland Ave eliminates the sidewalk pinch point due to the light pole and all shelters include lighting for people waiting at the bus stop.



*Above: A new shelter installed in Union Square*



# Pedestrian Improvements

- The City continues to reconstruct sidewalks and add missing curb ramps/tactile warning pads across the City primarily through the **Pavement and Sidewalk Management program**.
- So far in 2025, contractors have reconstructed sidewalks on the following streets:
  - Holland Street between Claremon Street and Teele Square
  - Holland Street between Simpson Avenue and Davis Square
  - College Avenue between Park Avenue and Davis Square
  - Meacham Road between Buena Vista and the Cambridge City Line
  - Gorham Street between Holland Street and Howard Street
  - Osgood Park
  - Oak & Houghton Raised Intersection
  - Hanson & Sheehan Raised Intersection
- We wanted to highlight this new tree bump out on Walnut Street at Boston Street completed through DPW. We had heard frequent feedback about this accessibility issue over the years.



*Above: Tree bump out on Walnut Street at Boston Street.*



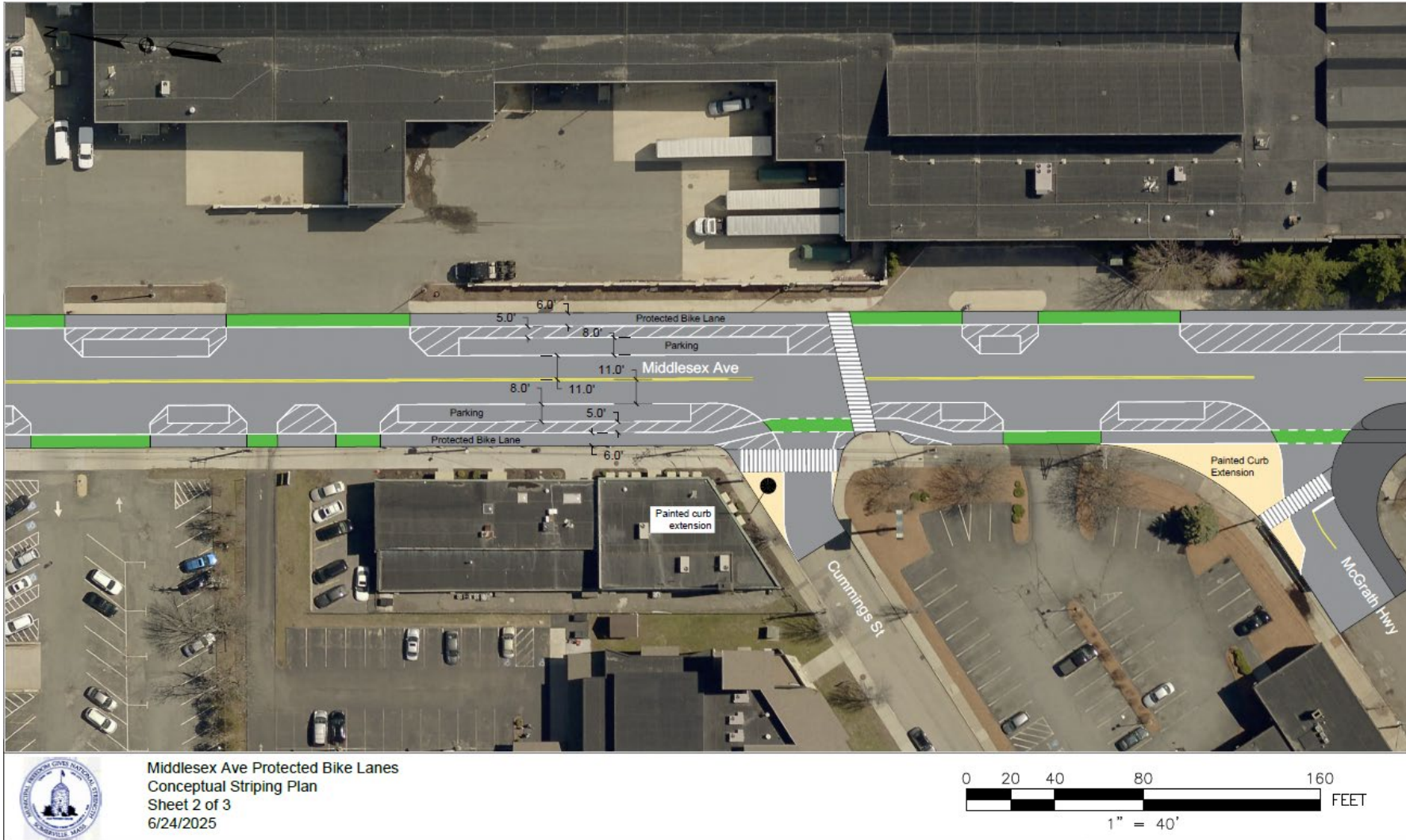
# Pedestrian Improvements

- Also, so far in 2025, contractors have completed two new raised intersections at Oak Street at Houghton Street, and Hanson Street and Skeehan Street.
- Contractors have constructed accessible curb ramps at the following locations:
  - 68 Glen Street
  - Benedict Avenue at Broadway
  - Clark Street Newton Street
  - Franklin Street and Oliver Street
  - Glen Street and Fountain Avenue
  - Glen Street and Webster Street
  - Highland Road Boston Avenue
  - Rogers Avenue at Boston Avenue
  - Weston Avenue at Clarendon Avenue
  - Princeton Street at Alpine Street
  - Community Path at Thorndike Street



*Above: Raised intersection at Oak Street and Houghton Street.*

# Middlesex Avenue Quick-Build Protected Bike Lanes

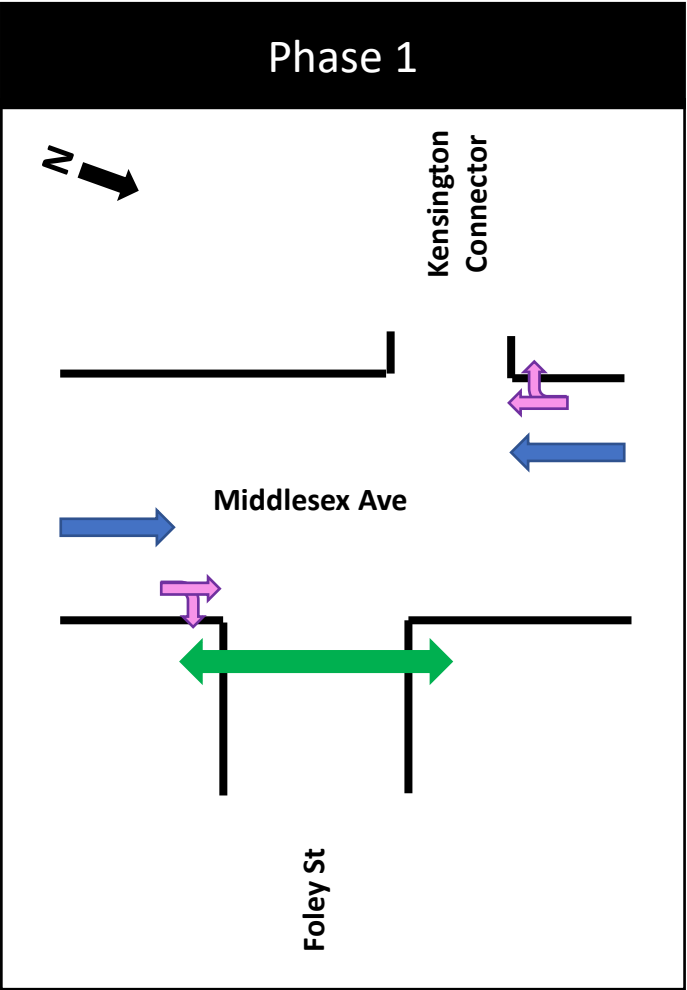


- The current pavement markings on Middlesex Avenue between Foley Street and Great River Road are extremely faded.
- Under our pavement markings maintenance contract, we can redo the pavement markings to increase safety for vulnerable road users.
- We the new design, we aim to clarify motor vehicle movements, install parking lanes, refresh crosswalks with clear corners and implement parking protected bike lanes to travel to and from Assembly Square.
- We also aim to adjust the traffic signal timing and phasing at the intersection of Foley Street to increase safety for people biking.
- Please share any feedback to Mobility through [transportation@somervillema.gov](mailto:transportation@somervillema.gov).



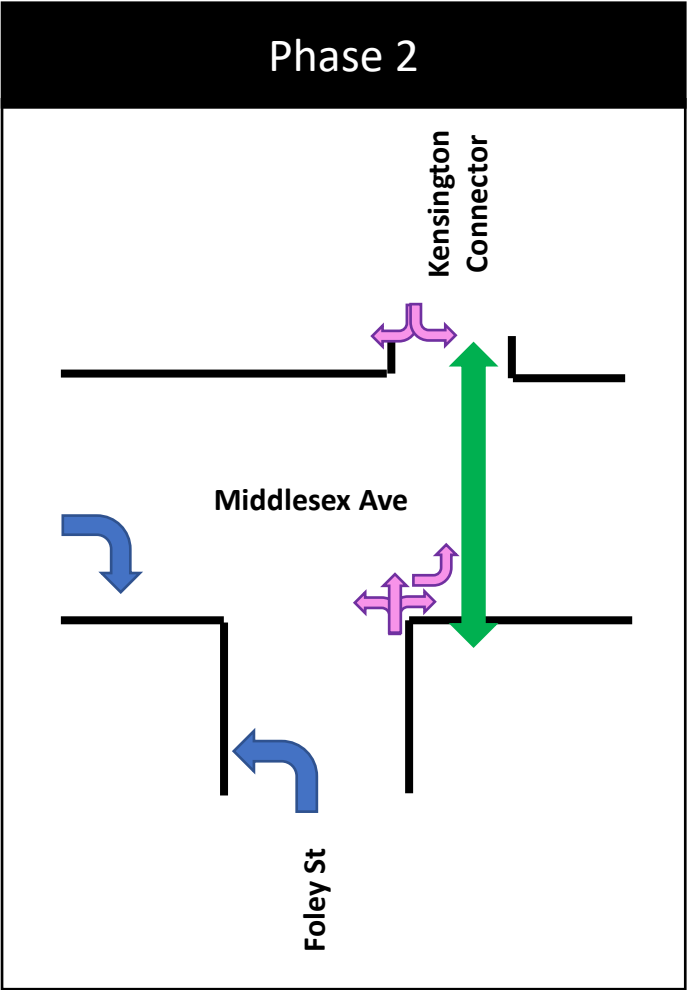
# Middlesex Ave at Foley St – Signal Phasing Proposal

Phase 1



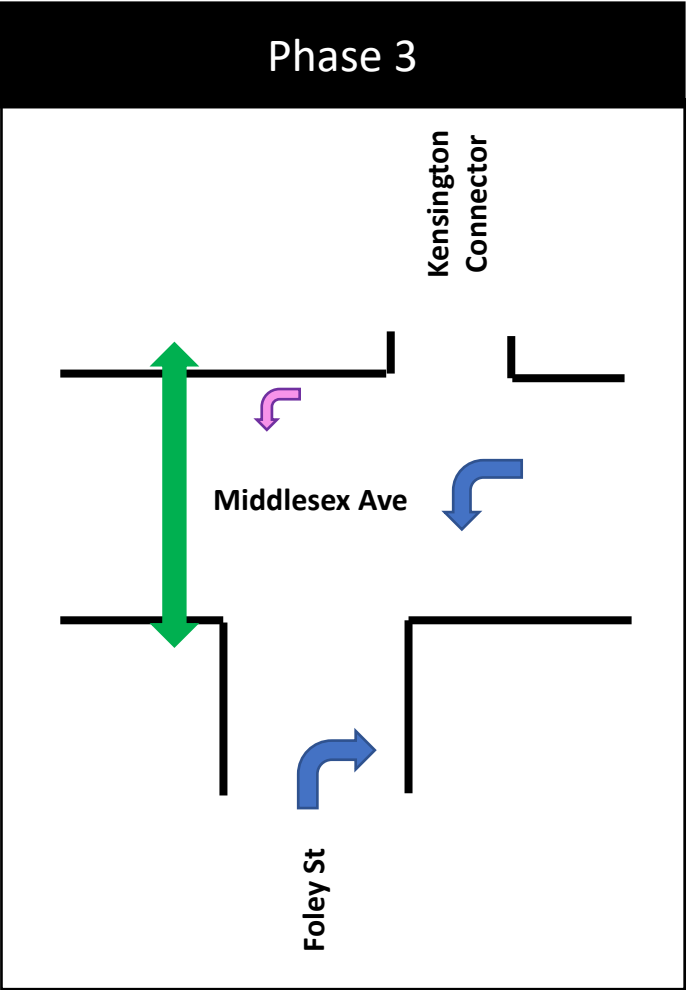
30 to 40 seconds

Phase 2



30 to 40 seconds

Phase 3



30 to 40 seconds

