

Central Hill Parking Zone Pilot



TRAFFIC COMMISSION 6/12/2025

Request to Extend until June 30, 2026

Request to extend the Central Hill curbside management pilot, originally approved at the November 18, 2021 Traffic Commission meeting, until June 30, 2026.

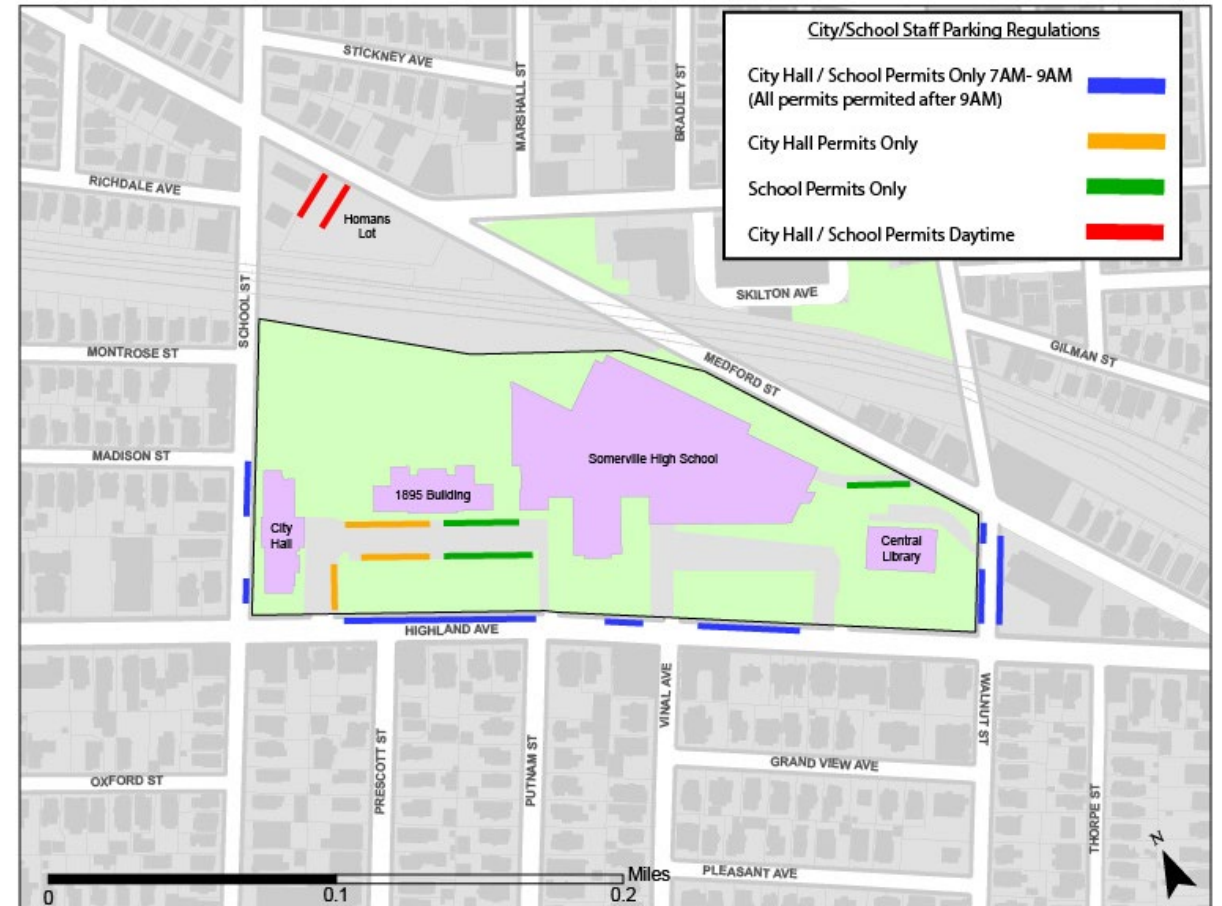
In June 2024, the Traffic Commission voted to extend the pilot until June 30, 2025.

Background & Pilot Regulations

With construction of the new Somerville High School and Central Hill campus, a majority of the on-site surface parking on the campus was replaced with public open space and recreation space.

“City Hall or School Permit” Parking Only

- 7am-9am only on school days
- Highland Ave (north side)
- School St (east side)
- Walnut St (both sides)



Pilot Objectives

Respond to concerns that curb management around Central Hill had become unpredictable and unpleasant for all users – residents, workforce, visitors.

Determine whether parking conflicts could be reduced by providing time-limited, priority parking on arterial streets for municipal / school workforce.

Collect data on changing curb use patterns in weekday and overnight time periods.

Data Collection and Analysis

Data Collection Methodologies

On five occasions between 2022-2024, Mobility Division staff have conducted morning parking inventories within the pilot zone and surrounding streets.



Study Findings Summary

Pilot regulations are being used utilized.

- Utilization of SPS staff designated parking spaces peaked between 87-94% of capacity.

Resident parking is available overnight.

- Before 7:00 AM, highest resident parking utilization observed was 82%. (Does not include pilot regulated spaces.)
- Overnight resident parking available on all streets observed in studies, including Highland Ave, School St, Walnut St, Medford St, and more.

SPS Staff Parking Utilization

Includes: SHS concourse, Homans Lot, 7-9am pilot spaces

	School Staff Designated Parking		
	6:30-7:00am	7:30-8:00am	8:30-9:00am
June 2022	33%	78%	90%
October 2022	46%	82%	89%
April 2023	33%	79%	87%
November 2023	24%	82%	94%
November 2024	43%	88%	92%

Resident Parking Utilization

Includes: RPP, 2-hour except by permit

	Resident Parking		
	6:30-7:00am	7:30-8:00am	8:30-9:00am
June 2022	75%	80%	82%
October 2022	82%	91%	83%
April 2023	77%	83%	87%
November 2023	71%	75%	74%
November 2024	71%	82%	86%

Efforts to Reduce Parking Demand

Workforce Transit Pass Program

- Free monthly MBTA subway and bus passes available to all City and SPS staff.

Student Transit Pass Program

- Free MBTA subway and bus passes available to all SPS students Grade 7-12 during September-June.

Free annual Bluebikes bike share membership available to all City and SPS staff

- Bluebikes stations are located at City Hall and Somerville High School

Continue to Study Pilot Conditions

The Mobility Division will continue to study the Central Hill curbside management pilot and collect data and feedback.

Changes to curb regulations around Central Hill are possible in the coming years; Highland Ave and School St are designated for protected bike lanes by 2030 as part of the Priority Network of the City's Bicycle Network Plan.