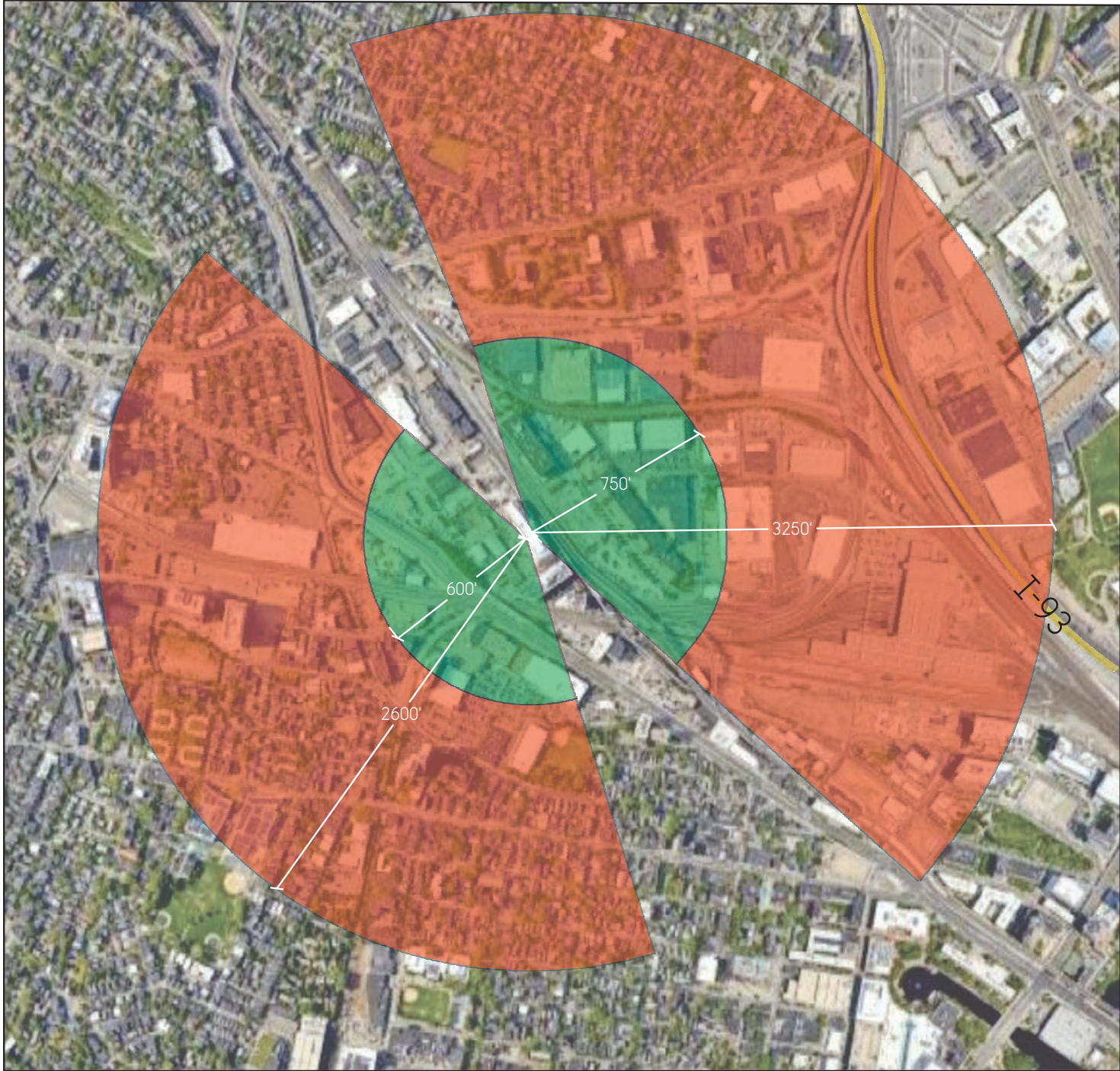


READABILITY STUDY

INDICATES IDEAL READABILITY DISTANCE

INDICATES MAX RECOGNIZABILITY DISTANCE



 SITE LOCATION: 100 CHESTNUT ST
LOCATION PLAN VIEW NTS



DESIGN COMMUNICATIONS LTD.

85 Bodwell Street phone 617.542.9620
Avon, MA 02322 fax 617.951.0777

ADA Forsyth
Institute

Somerville, MA

TITLE	Readability Study
-------	-------------------

ISSUE	For Approval 16 AUG 24 13 SEP 24
-------	--

DRAWN BY	SML
----------	-----

scale: full	
-------------	--

Graphic Layout 18005 -	1
---------------------------	---



● SITE LOCATION: 100 CHESTNUT ST - WEST SIDE
3-D GRAPHIC RENDERING



DESIGN COMMUNICATIONS LTD.

85 Bodwell Street phone 617.542.9620
Avon, MA 02322 fax 617.951.0777

ADA Forsyth
Institute
Somerville, MA

TITLE	Graphic Rendering
-------	-------------------

ISSUE	For Approval 16 AUG 24 13 SEP 24
-------	--

DRAWN BY	SML
----------	-----

scale: full

Graphic Layout 18005 -	2
---------------------------	---



● SITE LOCATION: 100 CHESTNUT ST - WEST SIDE
3-D GRAPHIC RENDERING - NIGHT



DESIGN COMMUNICATIONS LTD.

85 Bodwell Street phone 617.542.9620
Avon, MA 02322 fax 617.951.0777

ADA Forsyth
Institute

Somerville, MA

TITLE	Graphic Rendering
-------	-------------------

ISSUE	For Approval 16 AUG 24 13 SEP 24
-------	--

DRAWN BY	SML
----------	-----

scale: full

Graphic Layout 18005 -	3
---------------------------	---



● SITE LOCATION: 100 CHESTNUT ST - WEST SIDE
3-D GRAPHIC RENDERING



DESIGN COMMUNICATIONS LTD.

85 Bodwell Street phone 617.542.9620
Avon, MA 02322 fax 617.951.0777

ADA Forsyth
Institute
Somerville, MA

TITLE	Graphic Rendering
-------	-------------------

ISSUE	For Approval 16 AUG 24 13 SEP 24
-------	--

DRAWN BY	SML
----------	-----

scale: full

Graphic Layout 18005 -	4
---------------------------	---

NOTE: PLEASE SEE SHOP DWGS
FOR FABRICATION & MTD DETAILS



DESIGN COMMUNICATIONS LTD.

85 Bodwell Street phone 617.542.9620
Avon, MA 02322 fax 617.951.0777

ADA Forsyth
Institute

Somerville, MA

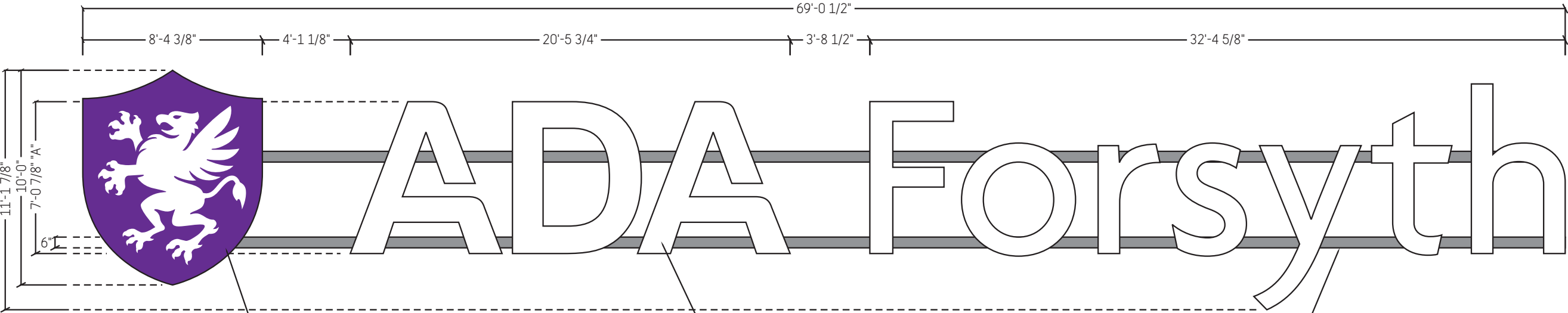
TITLE	Sign Type 1: 10" Shield
ISSUE	For Approval 16 AUG 24 13 SEP 24

DRAWN BY SML

scale: 3/16" = 1' - 0"

Graphic Layout
18005 -

9



12" DEEP INTERNALLY LED ILLUMINATED CHANNEL
W/ FABRICATED ALUMINUM BODY STRUCTURE & POLYCARBONATE FACE
RETURNS TO BE PAINTED: PMS 268 C
W/ FIRST SURFACE DIGITALLY PRINTED BACKLIT FLEX FACE
COLOR TO MATCH: PMS 268 C & WHITE
MOUNTED TO RACEWAYS

12" DEEP INTERNALLY LED ILLUMINATED CHANNEL LETTERS
W/ FABRICATED ALUMINUM BODY STRUCTURE & POLYCARBONATE FACE
RETURNS TO BE PAINTED: PMS 268 C
MOUNTED TO RACEWAYS

PAINTED RACEWAYS & MOUNTING HARDWARE
PAINTED TO MATCH: **EXISTING BUILDING FACADE**
MOUNTED TO EXISTING STRUCTURE
BEYOND METAL PANELS

● SIGN TYPE: 2 WEST BUILDING ID
DETAIL VIEW



● SIGN TYPE: 2 WEST BUILDING ID
PLAN VIEW

REQUEST FOR INFORMATION
- CONFIRM FINISHES

(S.T. TOTAL: 1)
SQ FOOTAGE:770.18



DESIGN COMMUNICATIONS LTD.

85 Bodwell Street phone 617.542.9620
Avon, MA 02322 fax 617.951.0777

ADA Forsyth
Institute

Somerville, MA

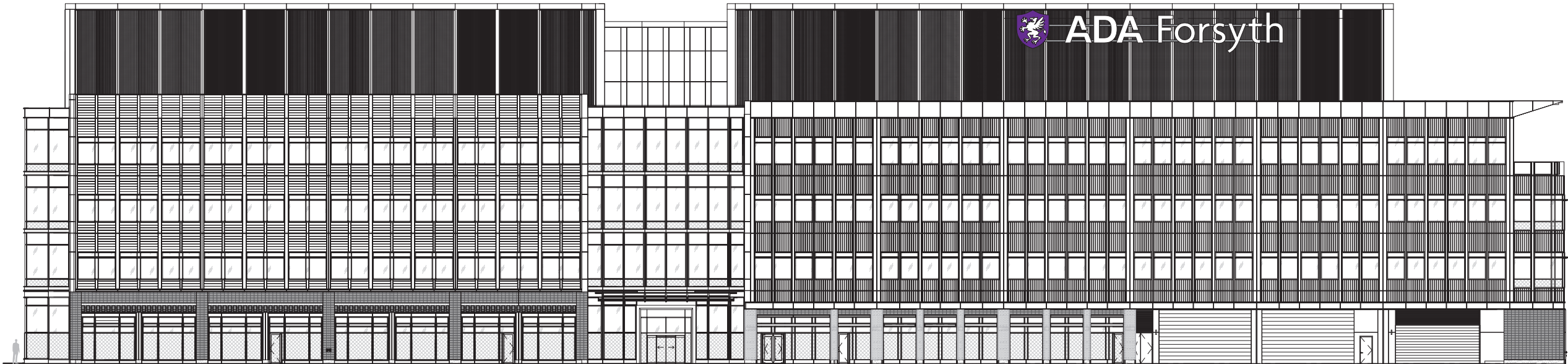
TITLE	Sign Type 1: 10' Shield
ISSUE	For Approval 16 AUG 24 13 SEP 24

DRAWN BY SML

scale: 3/16" = 1' - 0"

Graphic Layout
18005 -

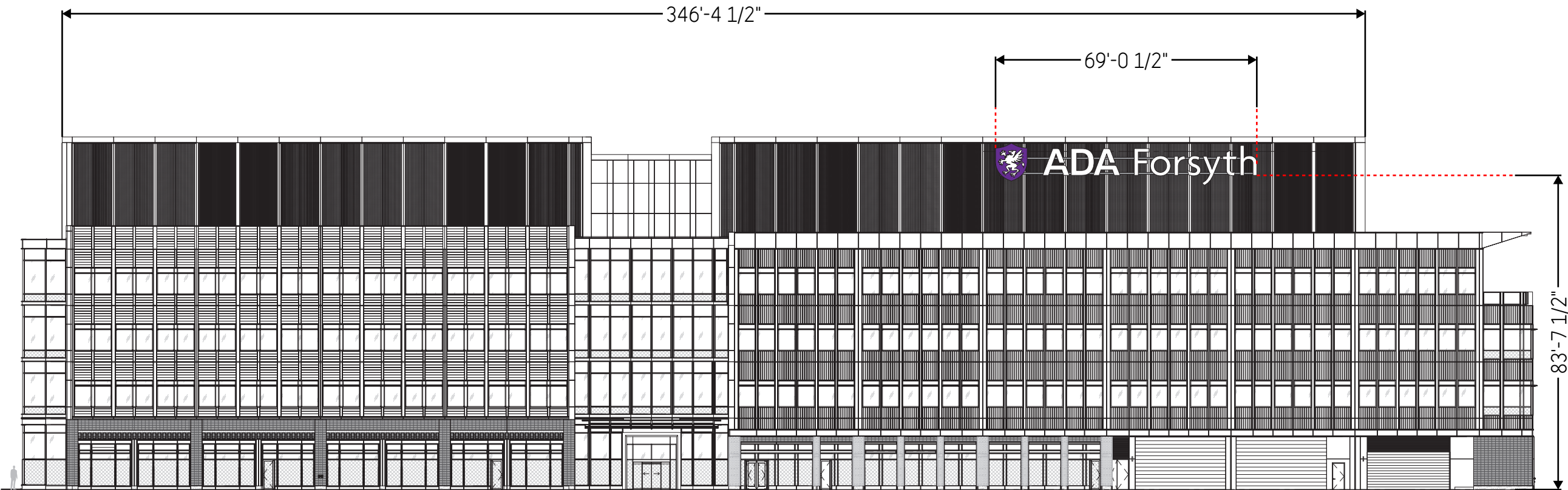
9a



SIGN TYPE: 2 WEST BUILDING ID
ELEVATION VIEW - NTS



DESIGN COMMUNICATIONS LTD.



85 Bodwell Street phone 617.542.9620
Avon, MA 02322 fax 617.951.0777

ADA Forsyth
Institute

Somerville, MA

TITLE	Sign Type 2: West - Building ID
ISSUE	For Approval 24 JAN 25

DRAWN BY	SML
----------	-----

scale: 3/16" = 1' - 0"

Graphic Layout
18005 -

9a

SIGN TYPE: 2 WEST BUILDING ID
ELEVATION VIEW - NTS