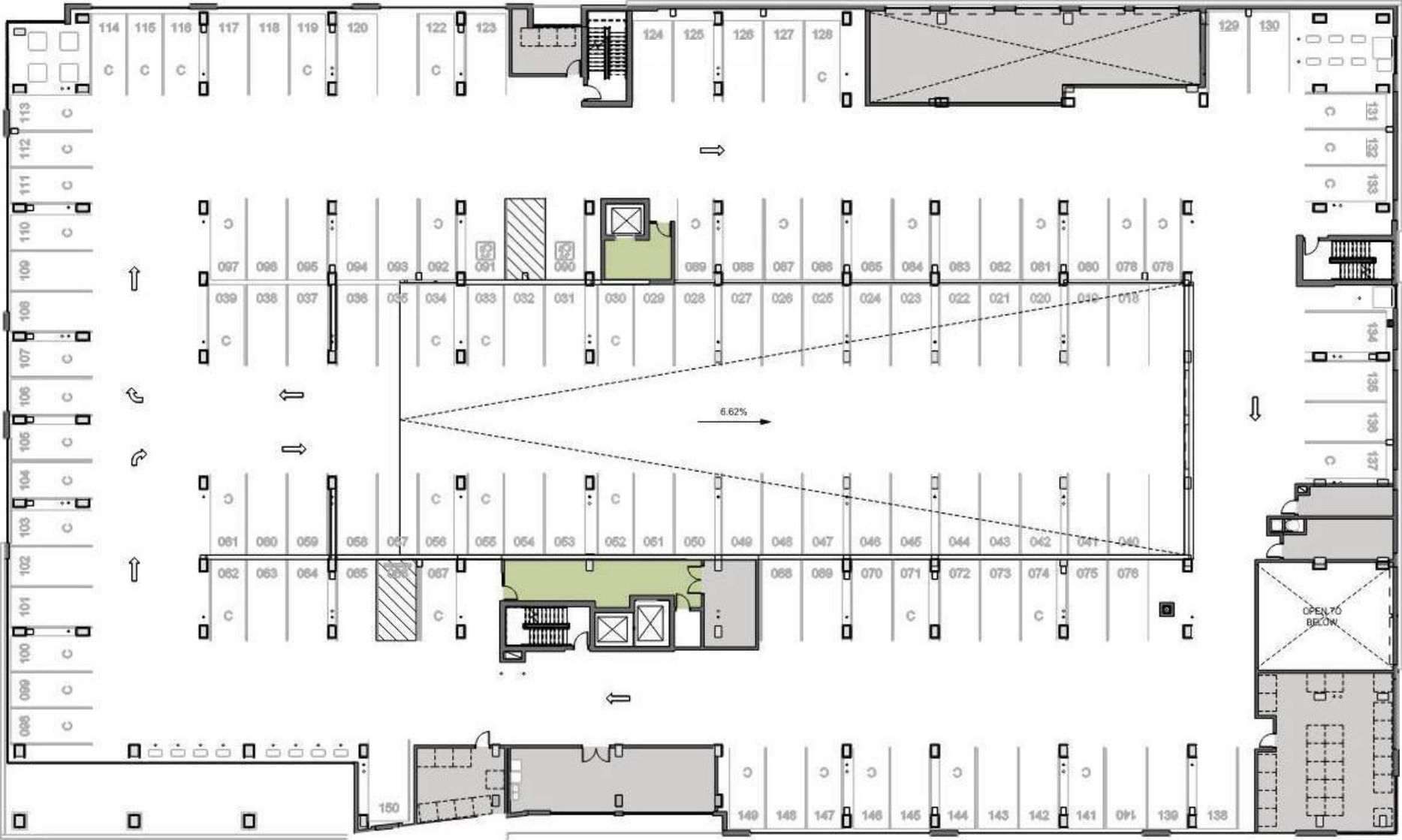


GRAND UNION BLVD

FOLEY STREET



AUTO WORKERS WAY

HAROLD COHEN WAY

GRAND UNION BLVD

FOLEY STREET

AUTO WORKERS WAY

HAROLD COHEN WAY

GRAND UNION BLVD

FOLEY STREET

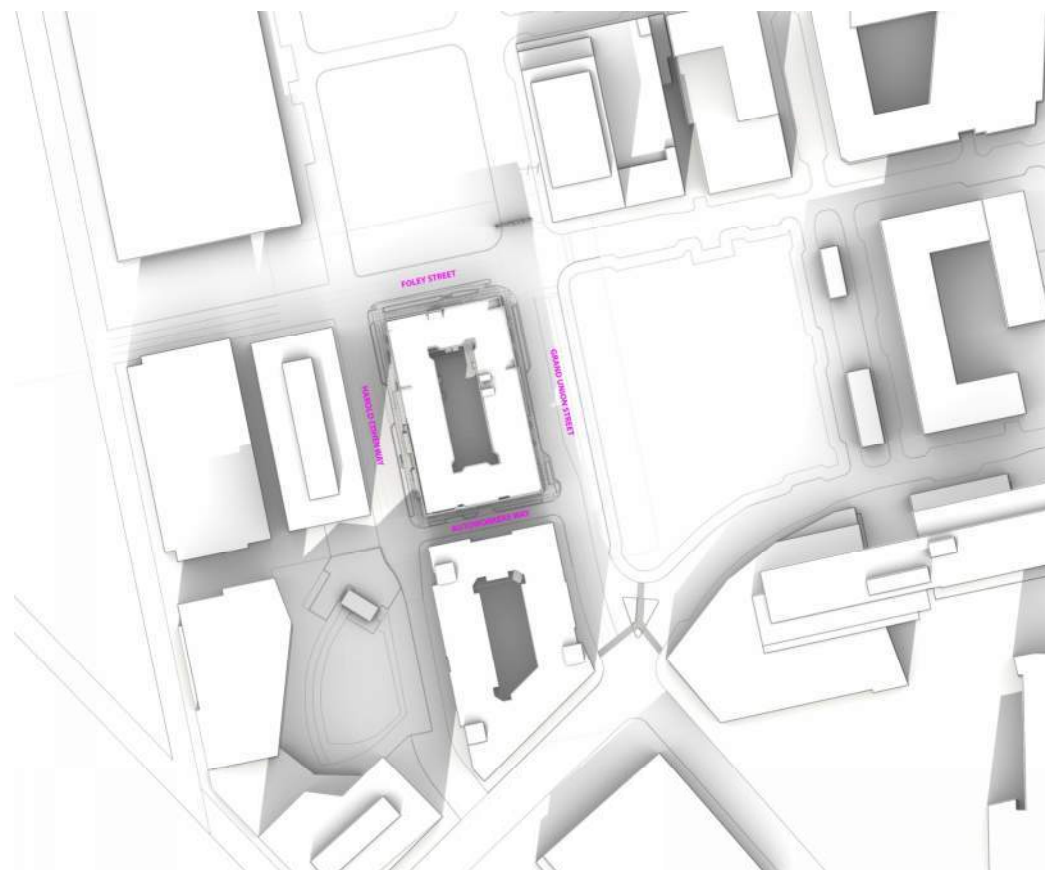
AUTO WORKERS WAY

HAROLD COHEN WAY





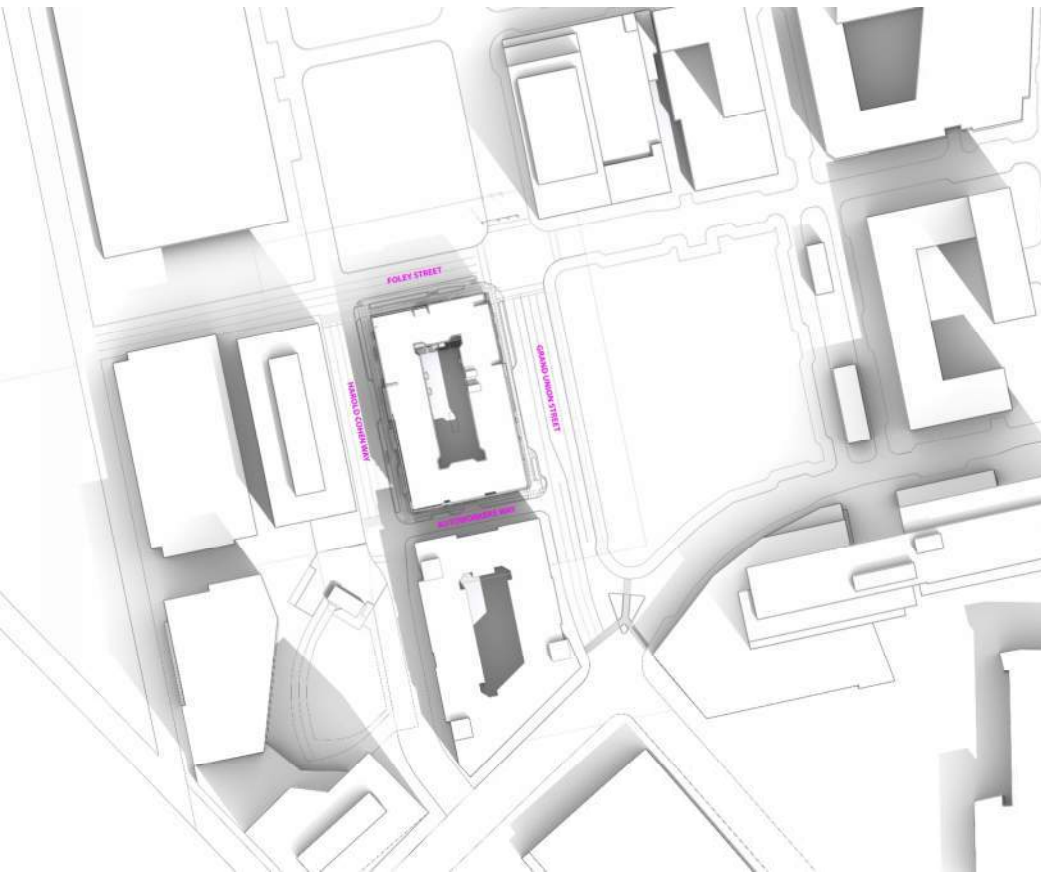
DECEMBER 21 | 9AM



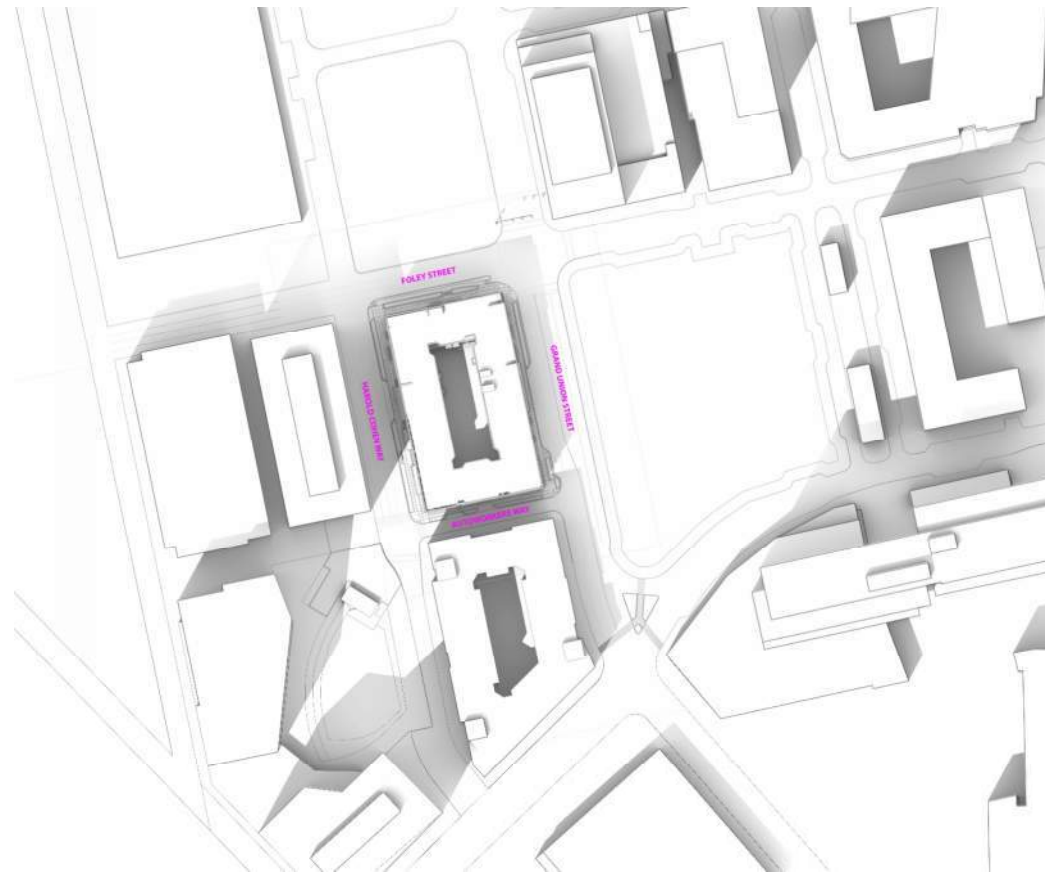
DECEMBER 21 | 12PM



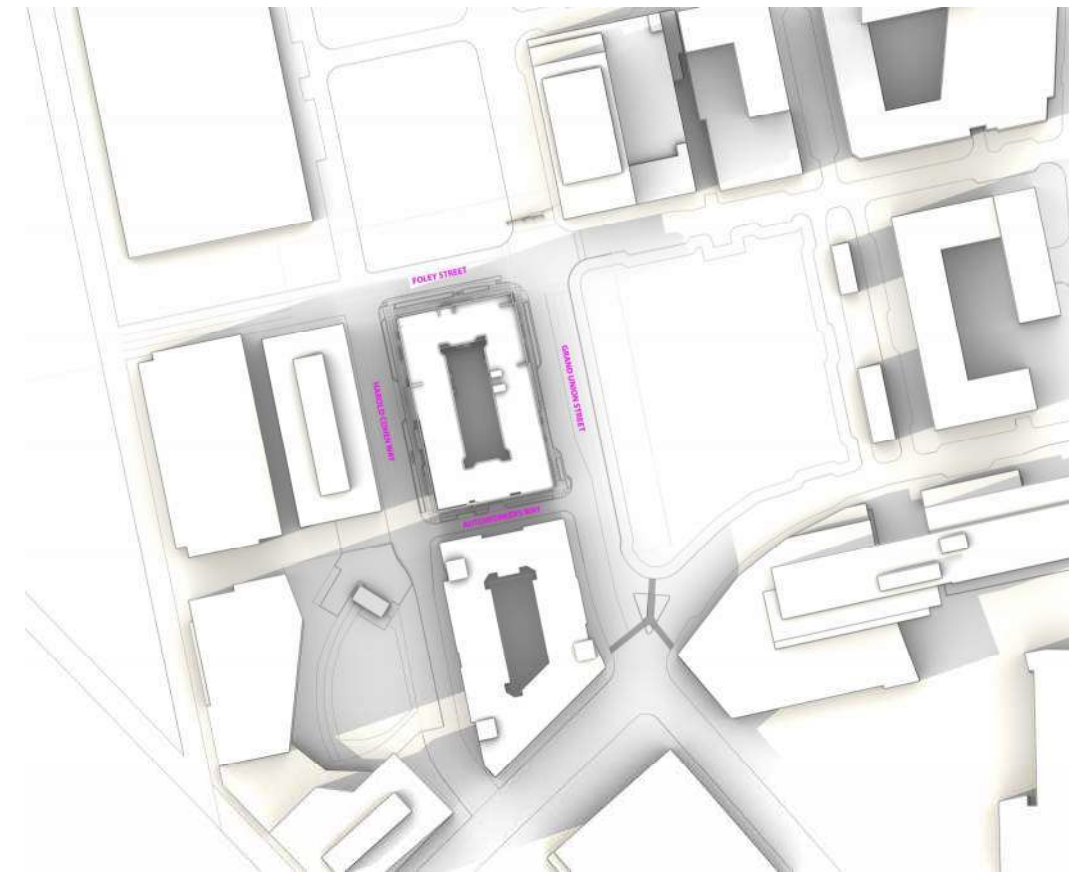
DECEMBER 21 | 3PM



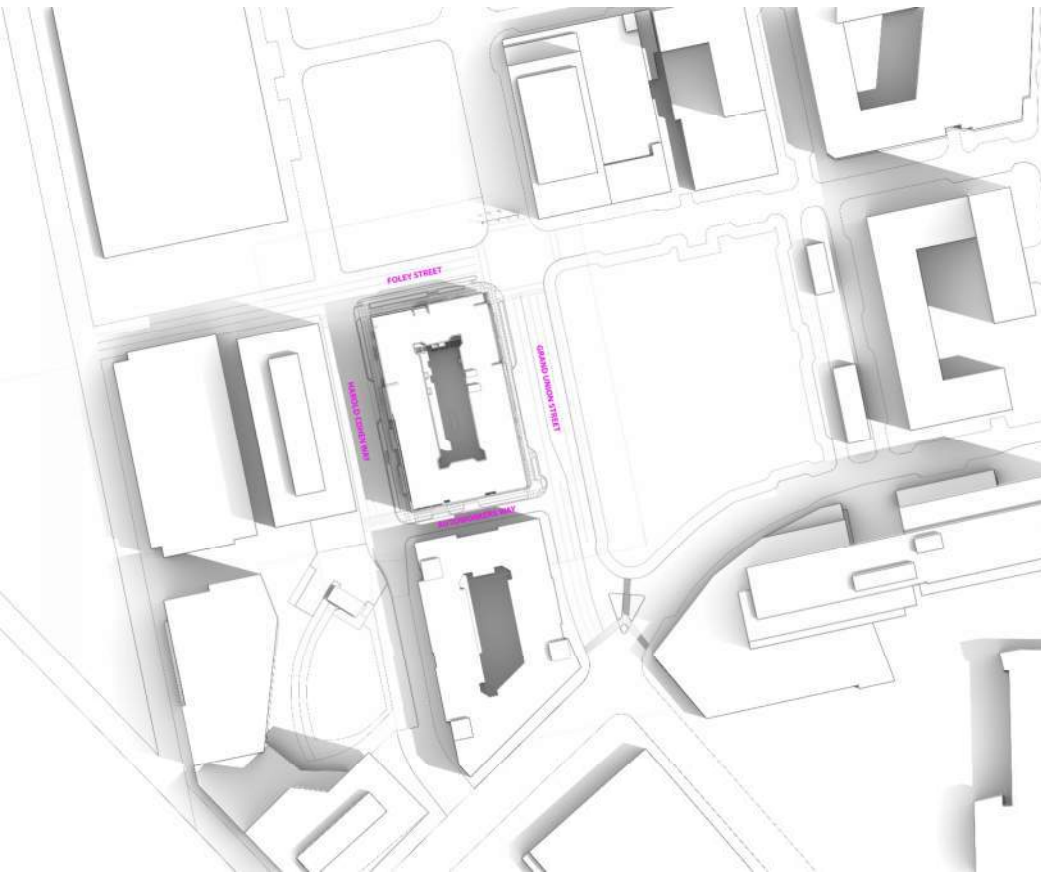
MARCH 21 | 9AM



MARCH 21 | 12PM



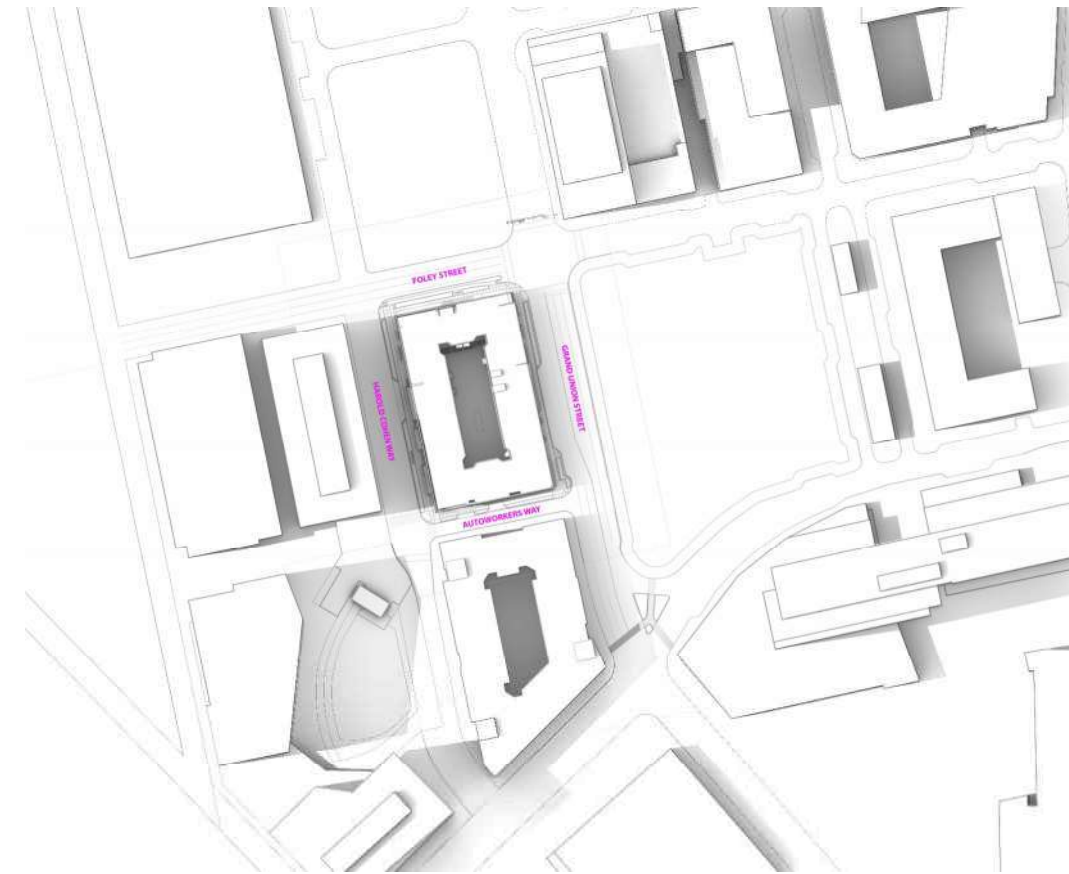
MARCH 21 | 3PM



JUNE 21 | 9AM



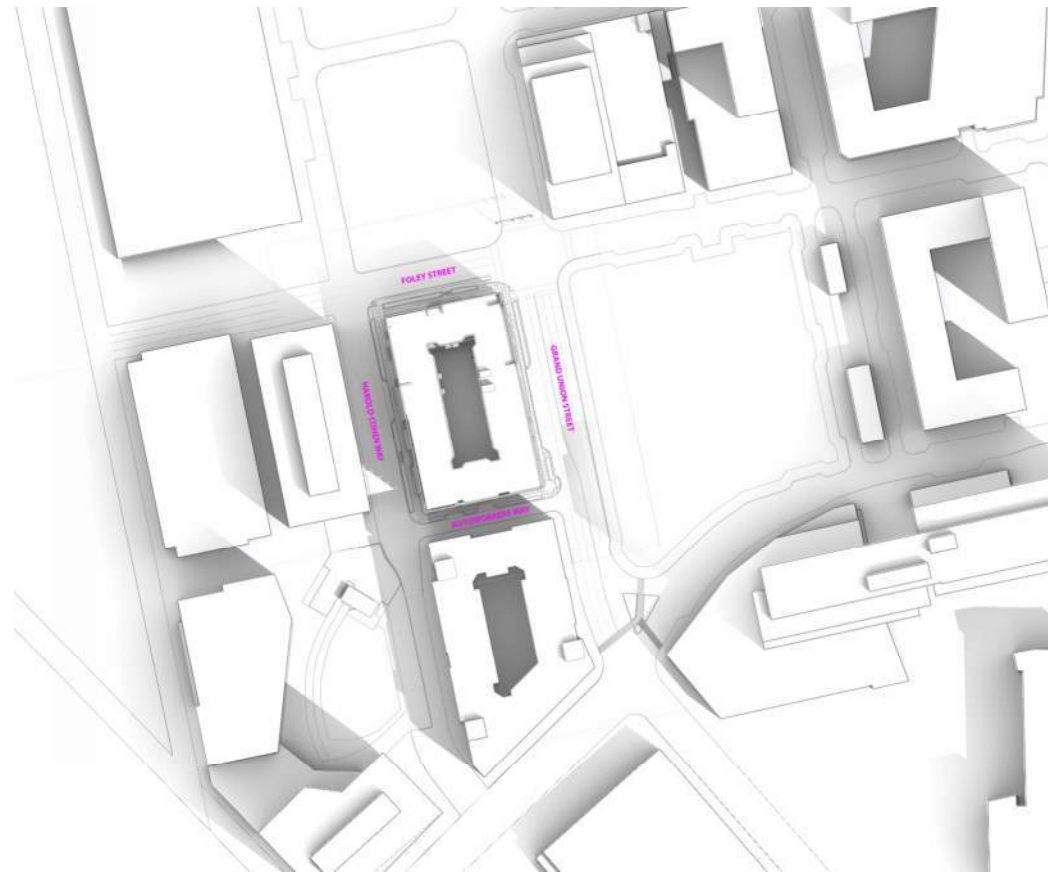
JUNE 21 | 12PM



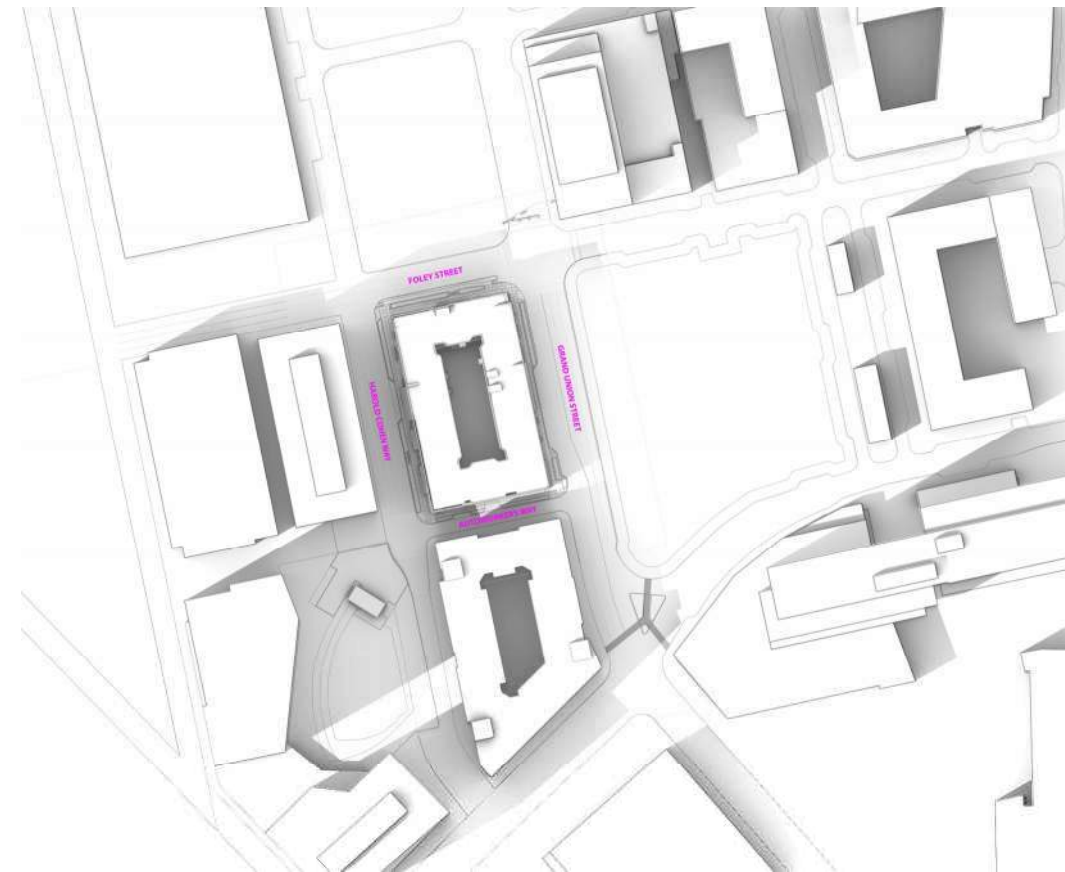
JUNE 21 | 3PM



SEPTEMBER 21 | 9AM

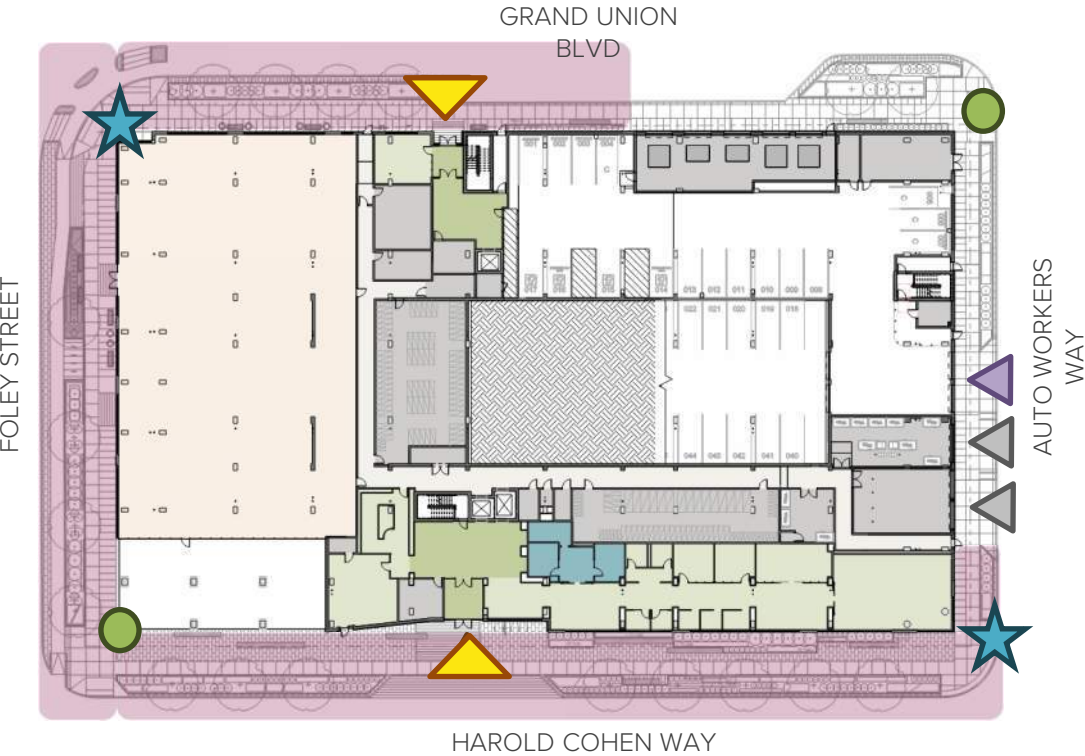


SEPTEMBER 21 | 12PM



SEPTEMBER 21 | 3PM

# BLOCK 9: Multi-Family Development



PLAN LEGEND

Significant Corner

Secondary Corner

Active Street Frontage

Lobby Entrance

Vehicular Access

Loading/Service Access



ISOMETRICS LEGEND

Significant Corner

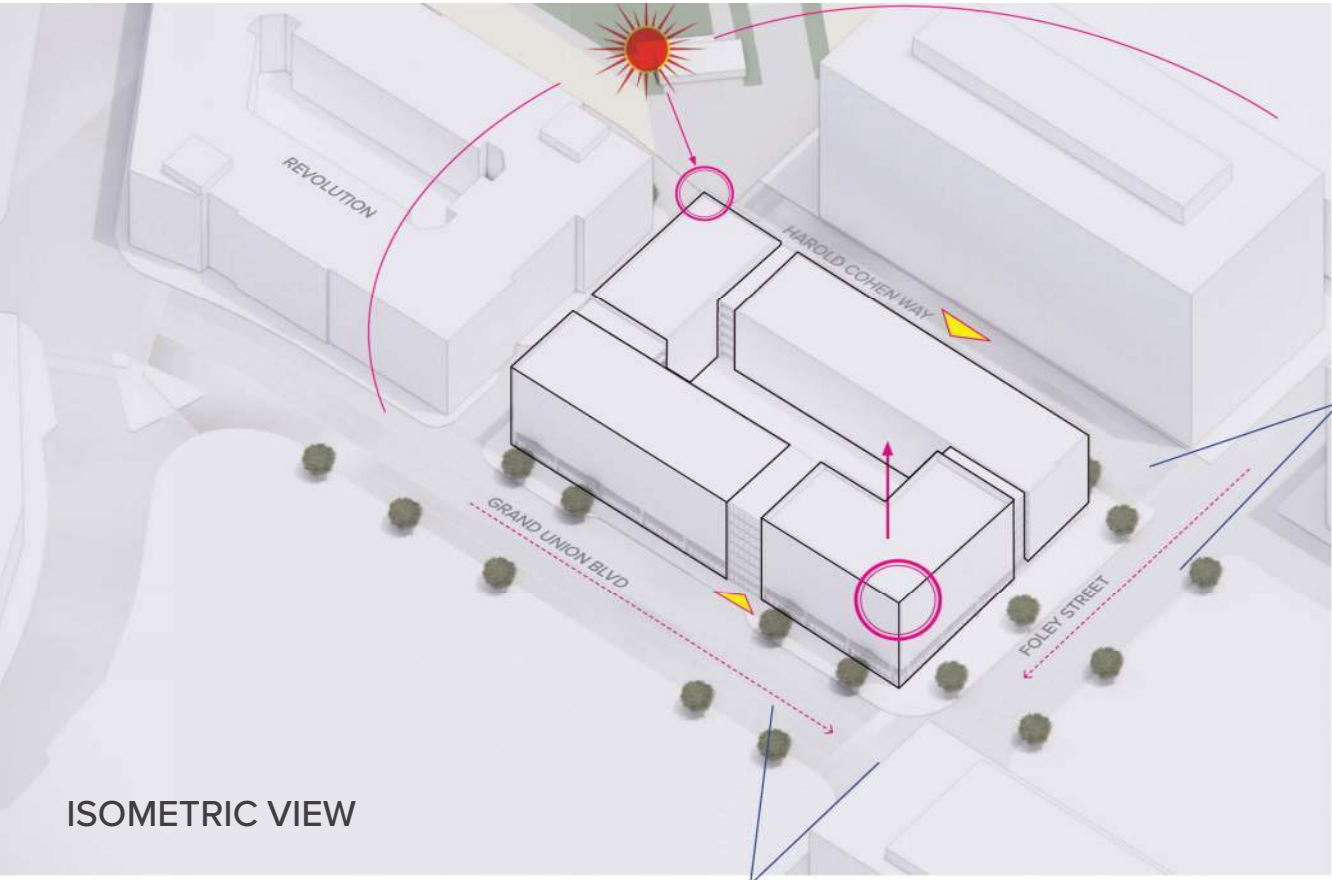
Lobby Entrance

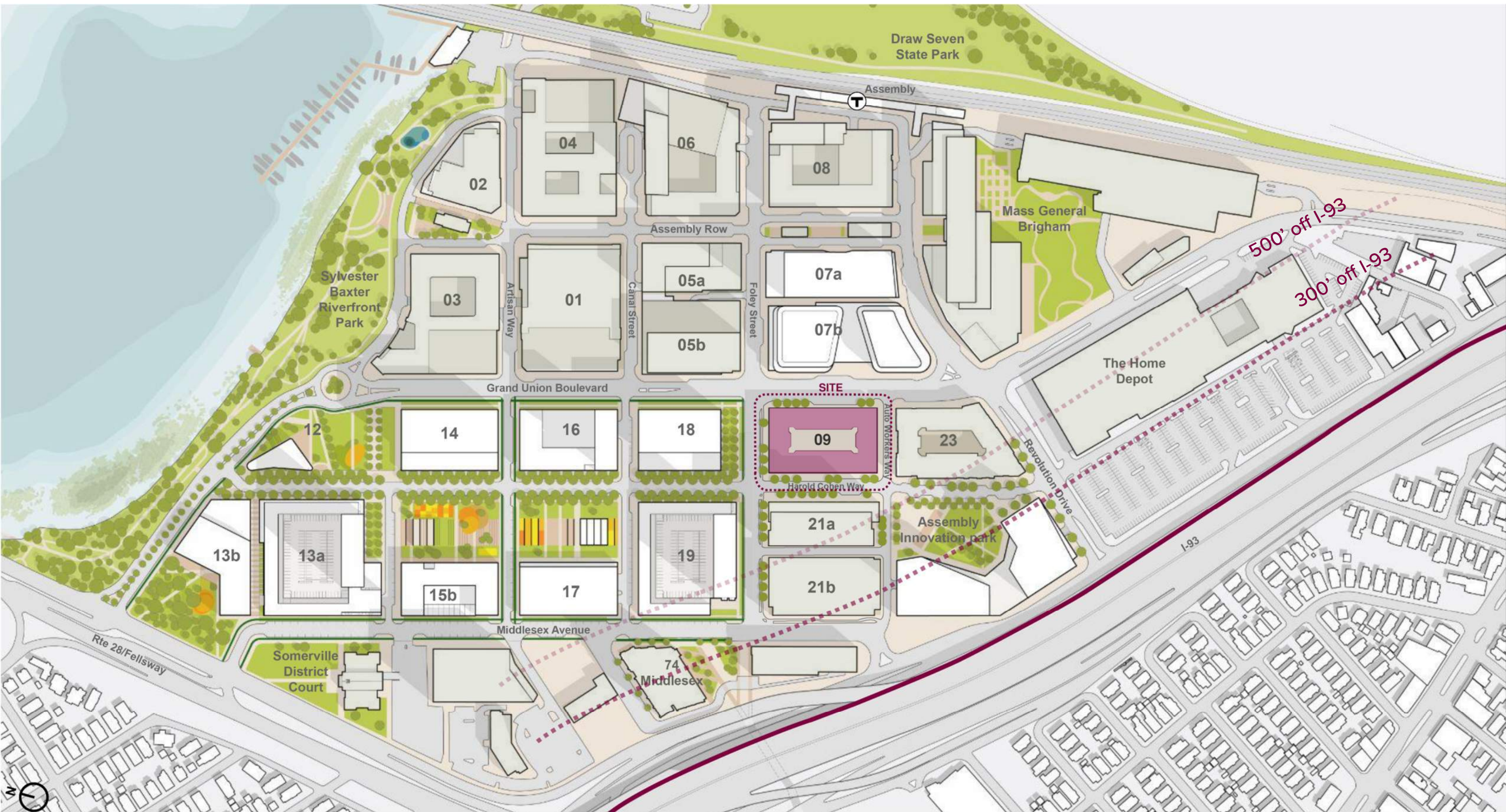
Connection to Park

Connection to Transport

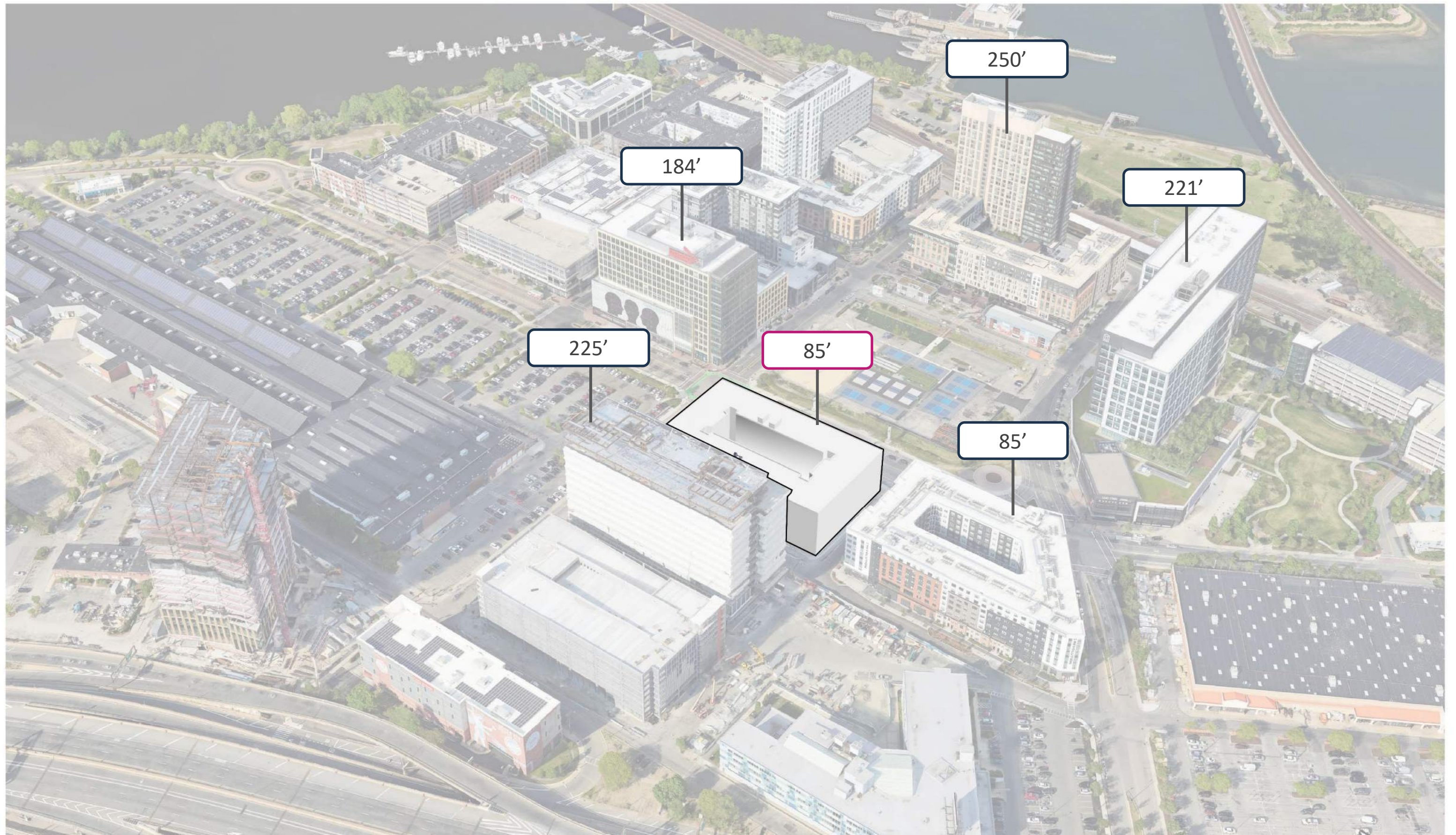
## Key Connections:

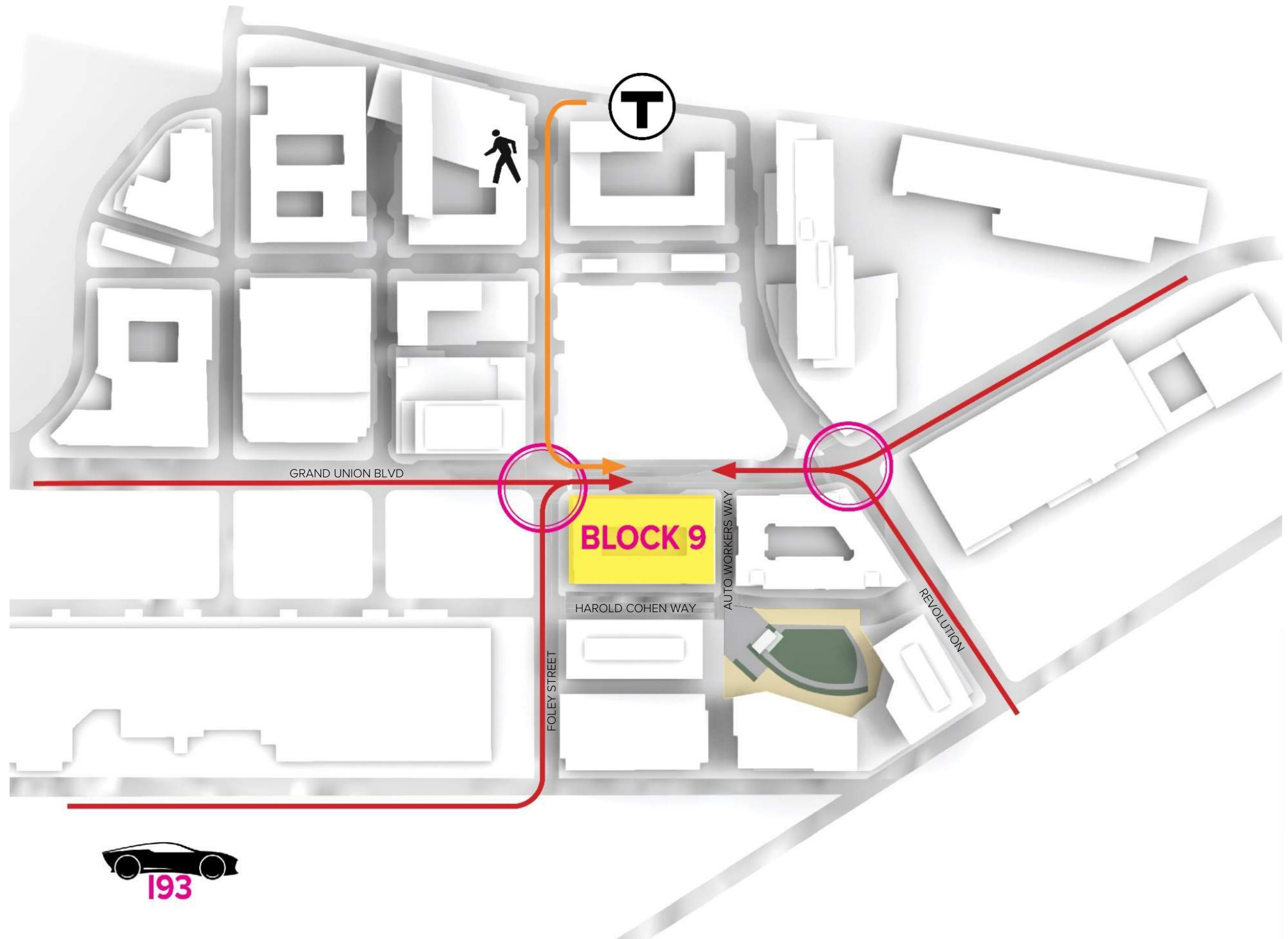
- Main entrance to be located on Harold Cohen Way to support city’s long-term vision for the neighborhood.
- Second entrance to be located closer to the existing T-Station and bus stop to support transportation access.
- Active storefronts on the ground level to be located on Foley Street and wrap corners.
- Designated significant corners to exhibit differentiation of materials and character, responding to natural hub at corner of Foley Street and Grand Union Boulevard and at the planned future park at the corner of Harold Cohen Way and Auto Workers Way.
- Vehicle ingress and egress for parking and access for service and loading to be located along the utilitarian corridor of Auto Workers Way.

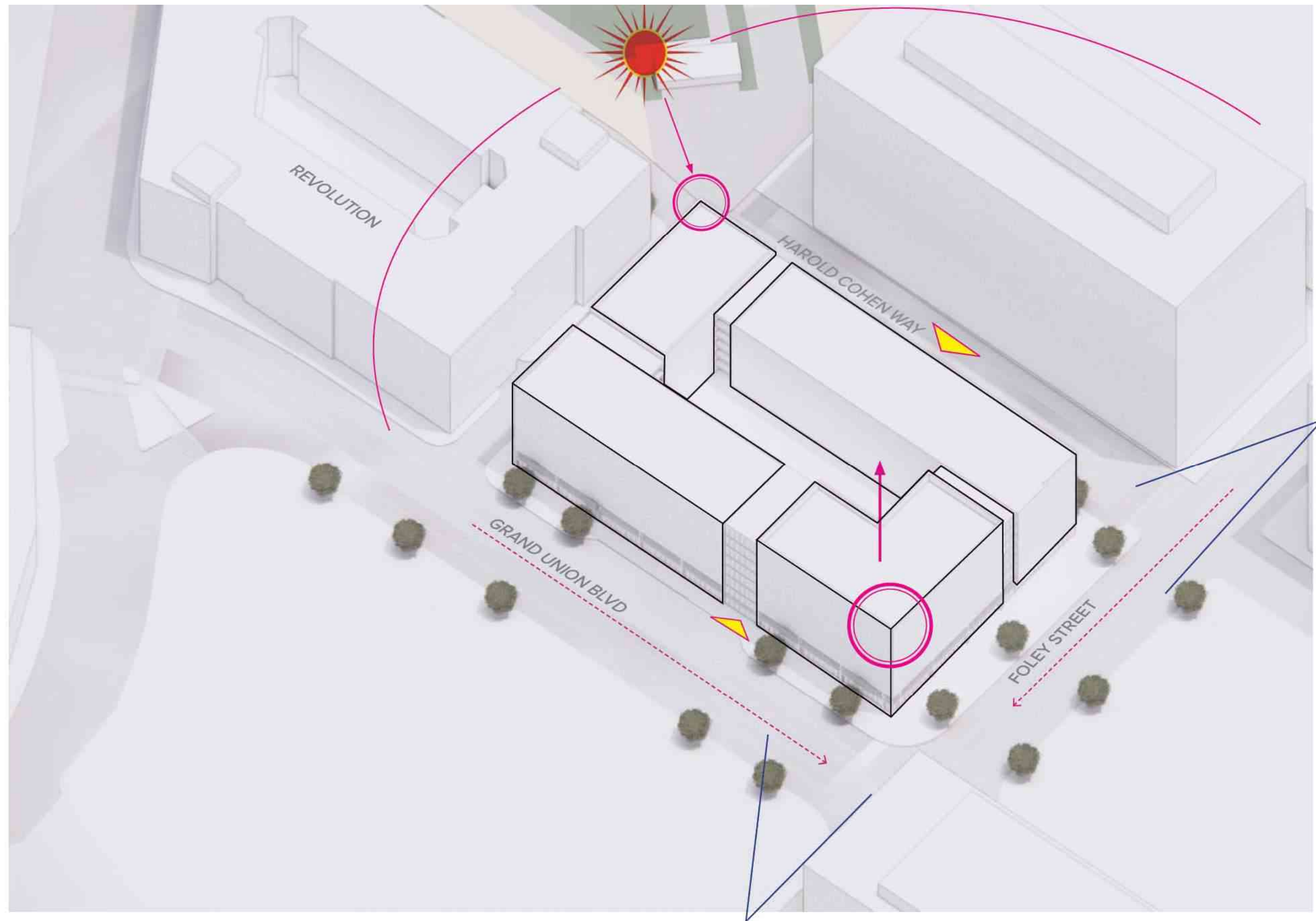




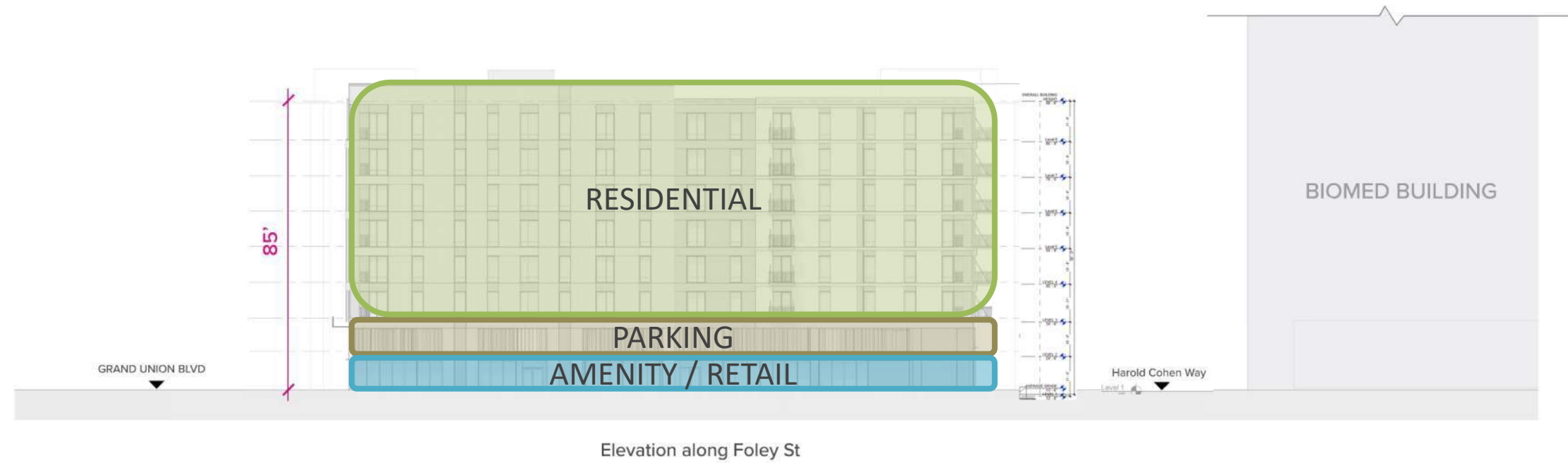
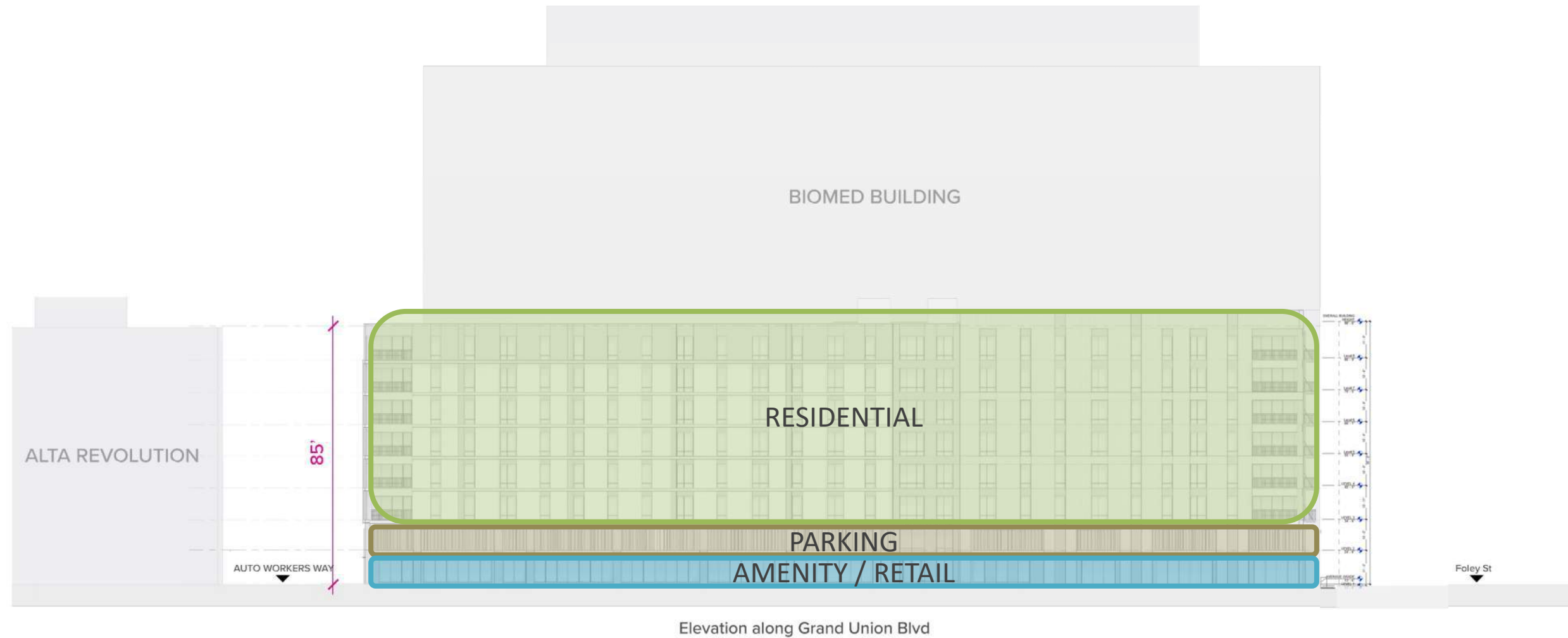


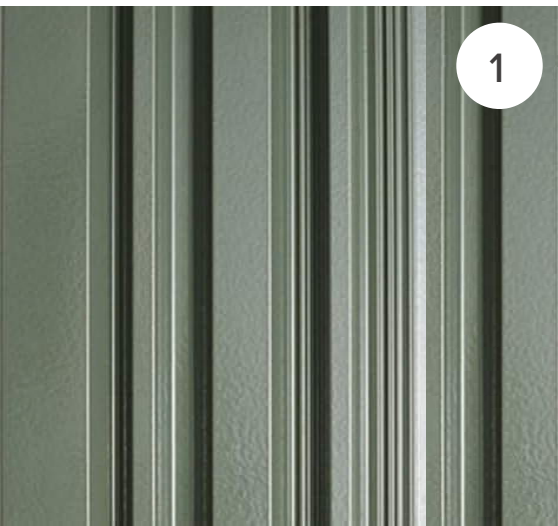




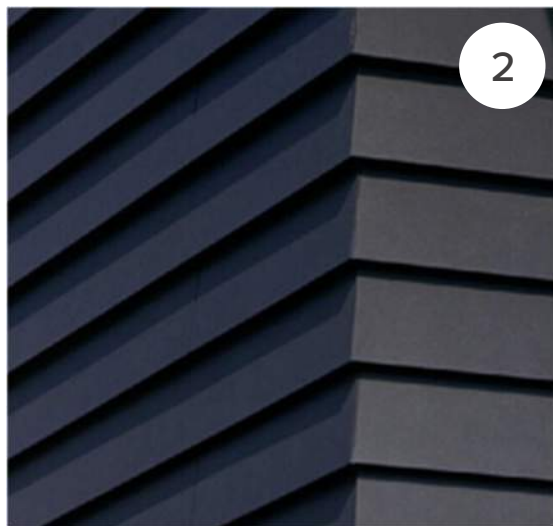




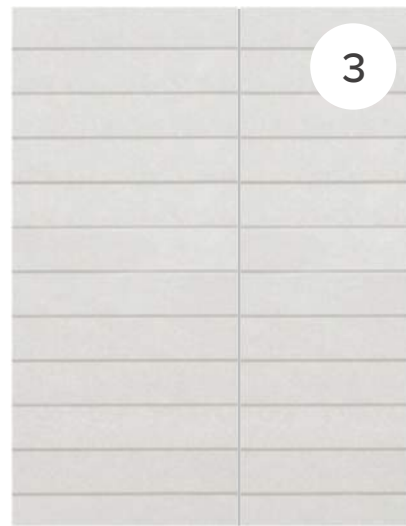




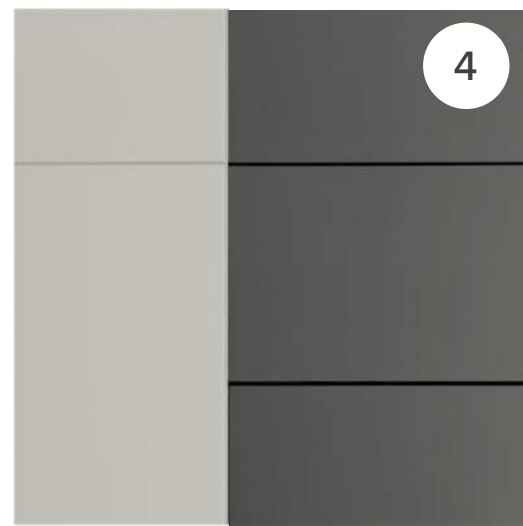
RIBBED CEMENTITIOUS PANELS



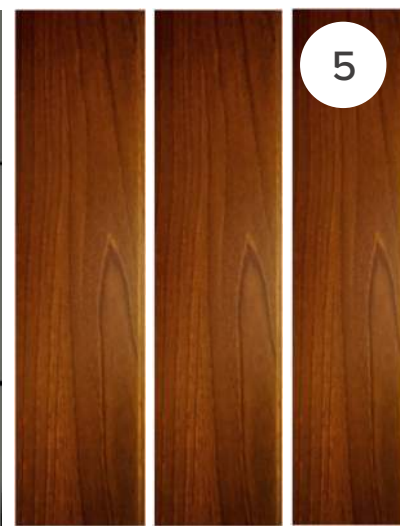
LAP CEMENTITIOUS SIDING



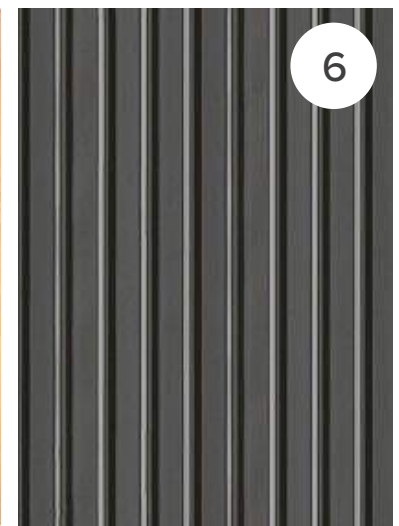
FLAT CEMENTITIOUS PANELS



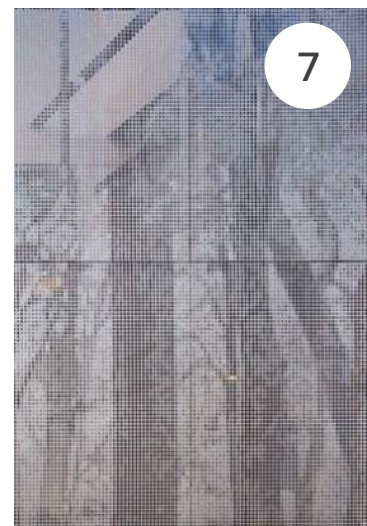
METAL PANEL



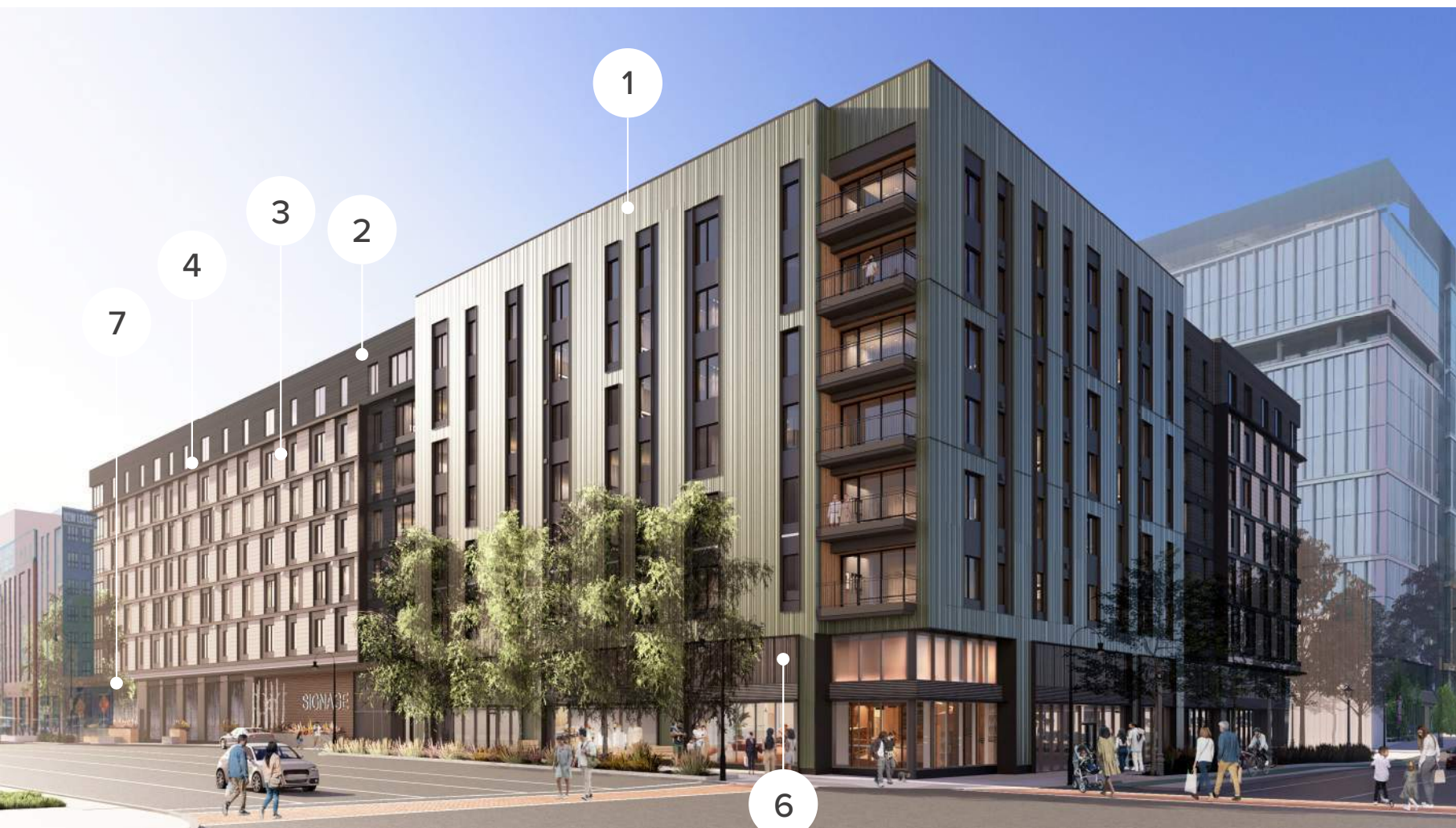
WOOD PATTERN SIDING



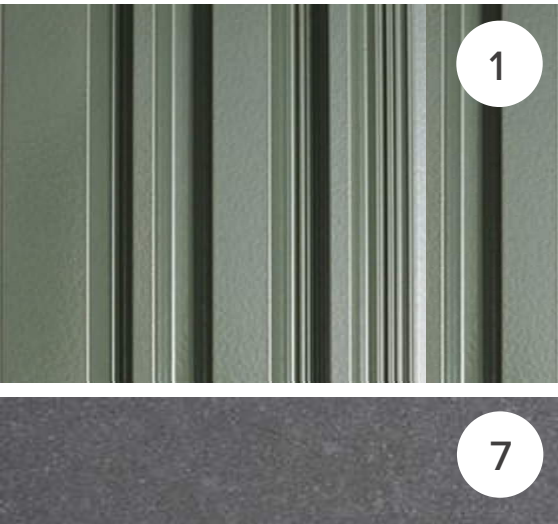
FORMED METAL PANEL



GRAPHIC METAL PANEL



RIBBED CEMENTITIOUS PANELS



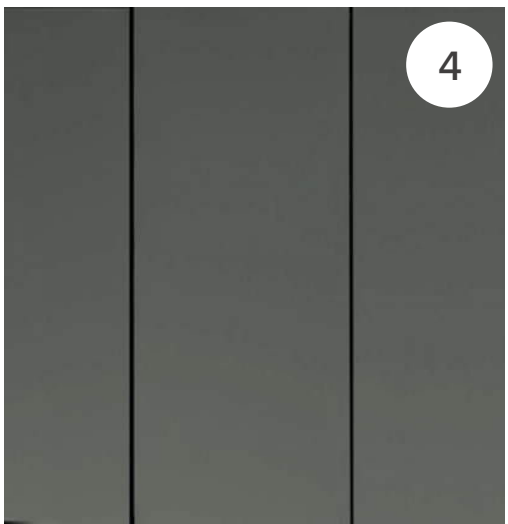
STONE BASE



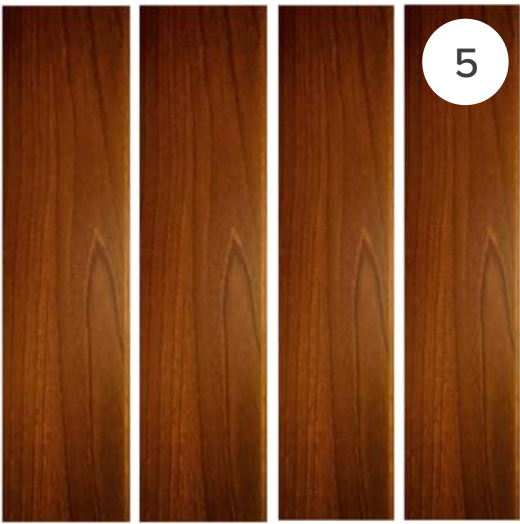
STOREFRONT FRAME AND GLASS



LOUVERS



METAL PANEL



WOOD PATTERN SIDING



FORMED METAL PANEL



Applied Adornments

Overall façade length	308'-6"	100%
Canopy length	80'-0"	25%
Arcade / Storefront length	189'-0"	61%
Total adornments	269'-0"	86%

Visual Access

Entry / Storefront length	233'-0"	86% (of total adornments)
---------------------------	---------	---------------------------





HAROLD COHEN WAY | BUILDING MAIN ENTRY



AUTOWORKERS WAY



GRAND UNION BLVD | BUILDING SECONDARY ENTRY