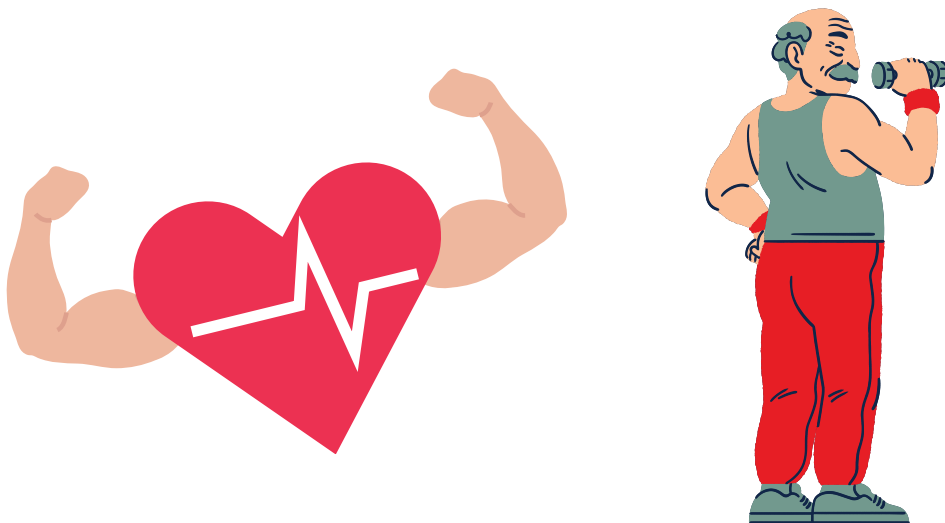
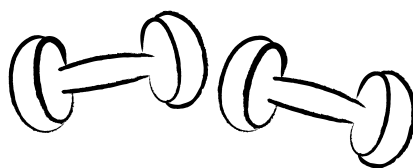




General Exercise at the Ralph and Jenny Center



Monday February 3rd and 10th at 3:00pm



**For more information contact Michelle
at 617-625-6600 x2315**



Persons with disabilities who need ADA accommodations to access this program, please contact Adrienne Pomeroy in advance at 617-625-6600 x 2059 or apomeroy@somervillema.gov.

The City of Somerville can provide you with an interpreter in your language for free. To request an interpreter, please contact us at somerviva@somervillema.gov or call 311 (617-666-3311) at least 7 days in advance of this event.