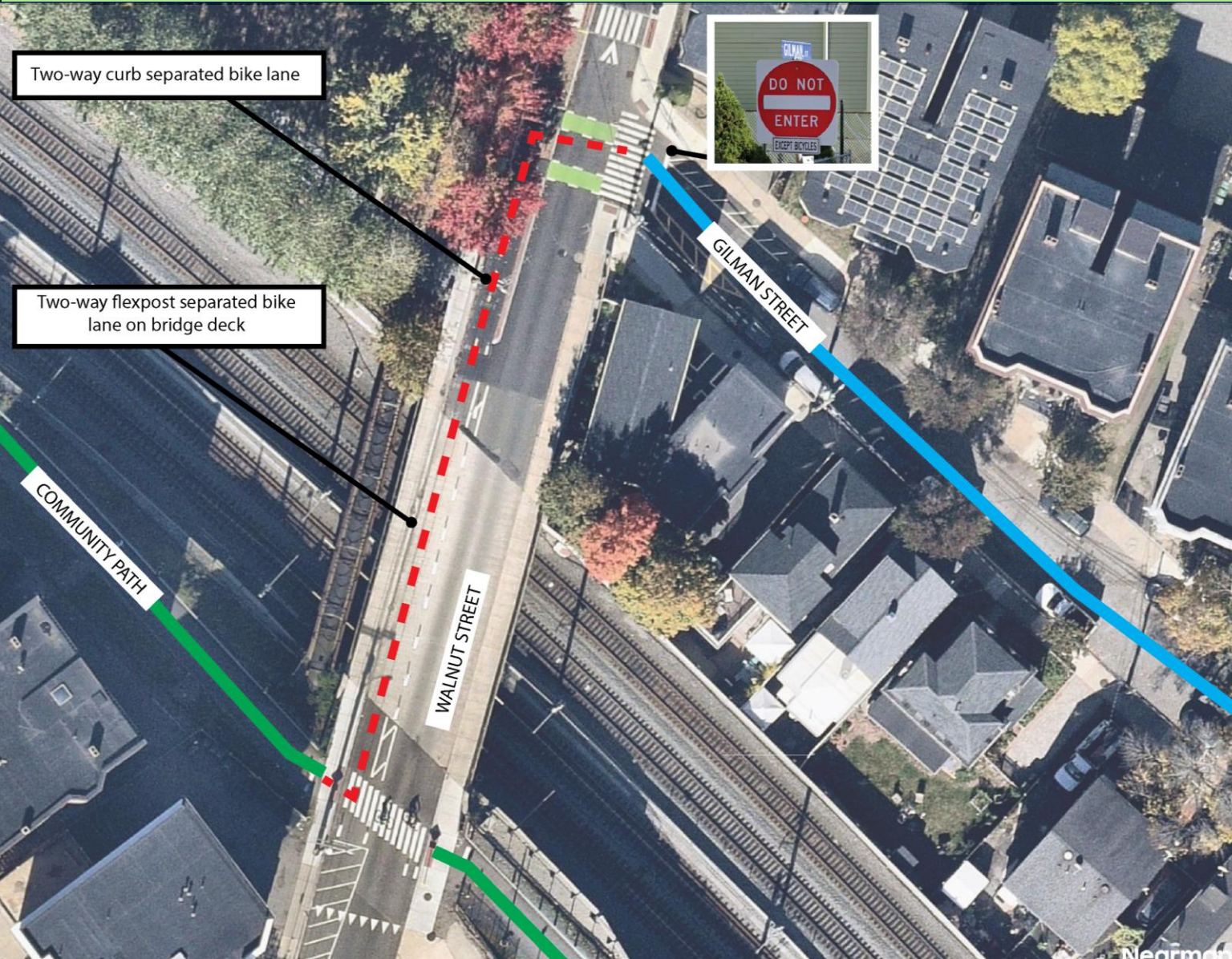
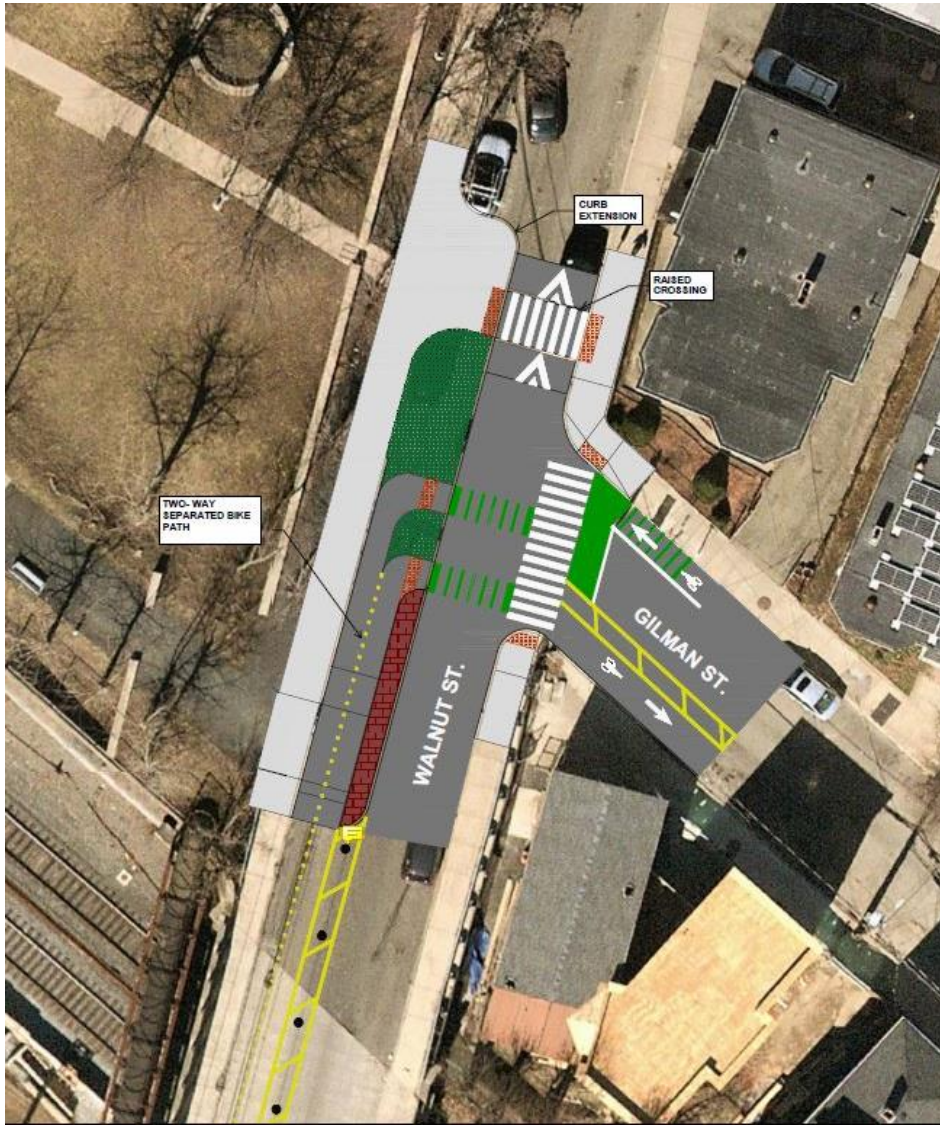


## Item #4: Request to allow two-way travel for people riding bicycles on Walnut Street between Gilman Street and the Community Path



- Housekeeping item to formalize contraflow
- Existing facility completed in summer 2024 connecting the Community Path with existing Gilman Street Neighborway (two-way bike travel)
- Engineering plans, including contraflow, shown at the June 2022 Traffic Commission meeting in support of related parking restrictions (Items #27-32 of the June 2022 Agenda - *approved*)





Concept plan from design documents



Existing Conditions – November 2024