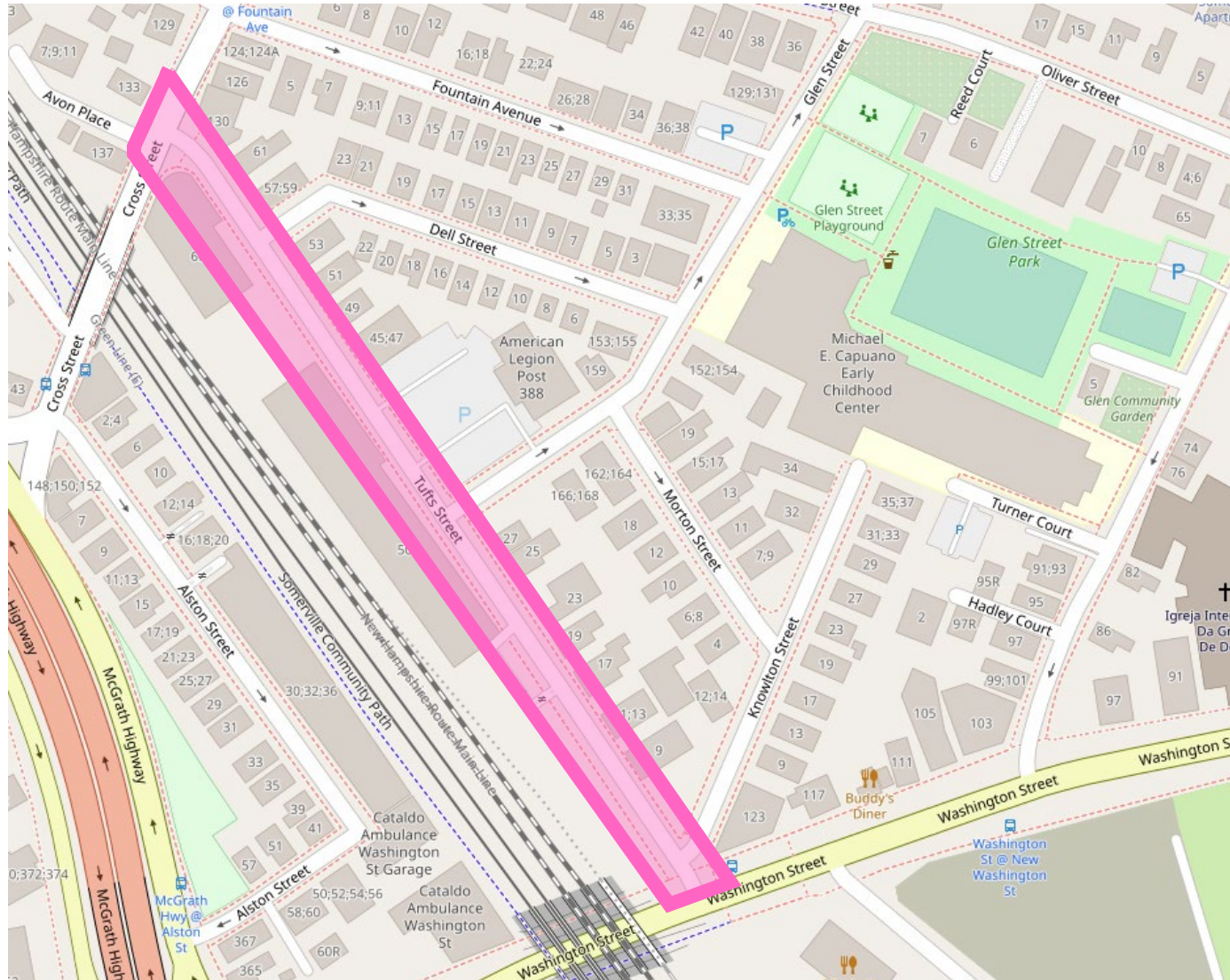


Item #6 – Tufts Street Reconstruction Project Information

Project description and Parking Strategy



- In 2023 Mobility and Engineering started the design and community outreach process for Tufts Street Reconstruction
- Why Tufts Street
 - Was on the 5 year Sidewalk and Pavement Program
 - Is dedicated as a Neighborway on the Bicycle Network plan
 - Is a main access route for East Somerville residents and visitors to get to and from the East Somerville Green Line station

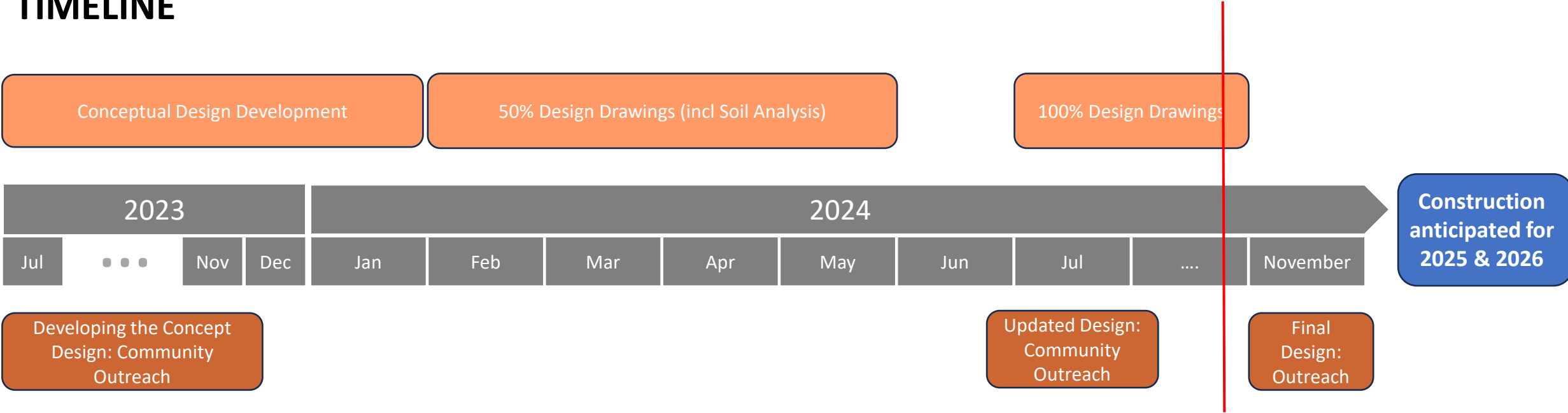


Existing pavement and sidewalk condition

Item #6 – Tufts Street Reconstruction Project Information

Project description and Parking Strategy

TIMELINE

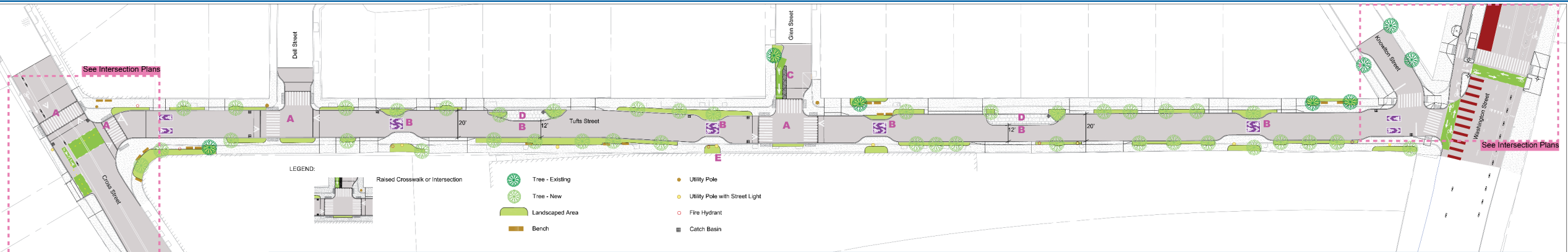


Item #6 – Tufts Street Reconstruction Project Information

Project description and Parking Strategy

80% PROPOSED DESIGN

Two-Way Street with Pinch Points (NTS)



A - RAISED INTERSECTIONS CROSSWALKS

- Crosswalks continue on sidewalk level
- Enables people using wheelchairs, other mobility devices, and strollers to cross more easily and make drivers slow down and increases visibility when people cross streets

B - PINCH POINTS

- Road narrows to only let one car through
- Slows cars
- Wider sidewalk

C - NEIGHBORWAY TREATMENTS

- Gateways create safer intersection for people walking, biking, driving
- Neighborhood pavement symbols and Neighborhood signs indicate a slower street where pedestrians and people riding bicycles have priority

D - MULTIPURPOSE PARKING OPTIONS

- Different types of parking throughout the day
- For example, loading zones (20 minute commercial delivery and 5 minute passenger pickup or delivery) in the daytime and longer-term parking overnight

E - WALL MURAL

- Art placed on the blank white wall

LANDSCAPED AREAS AND WIDER SIDEWALKS

- ADA compliant sidewalks
- Landscaped areas with trees and native plants

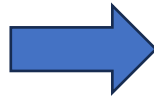
Item #6 – Tufts Street Reconstruction Project Information

Project description and parking strategy

PARKING

PRIOR TO GLX CONSTRUCTION
- BEFORE 2019

26 Parking spaces on one side
of Tufts Street



FOR GLX CONSTRUCTION
2019

Parking removed on Tufts Street



POST GLX CONSTRUCTION
May 2022

Traffic Commission approved
permanent removal of parking on
Tufts St



TUFTS STREET RECONSTRUCTION PROJECT – 2025/2026

Reintroduce 4 Parking spaces

- Final regulation still to be determined, most likely loading during the day and residential parking overnight
- Expect formal request to the Traffic Commission – November or December of this year
- 2 spaces between Dell Street and Glen Street and 2 spaces between Glen Street and Knowlton Street

