



West Broadway Reconstruction Project

Conceptual Design Presentation

April 16, 2023

Project website: somervillema.gov/westbroadway

Mayor Katjana Ballantyne
City of Somerville, Office of Strategic Planning & Community Development
Councilor Judy Pineda Neufeld



Agenda

- Who are we and what do we do?
- What is the project?
- What have we learned so far?
- What design is being proposed?
- What comes next?

Who are we and
what do we do?



City - Project Team

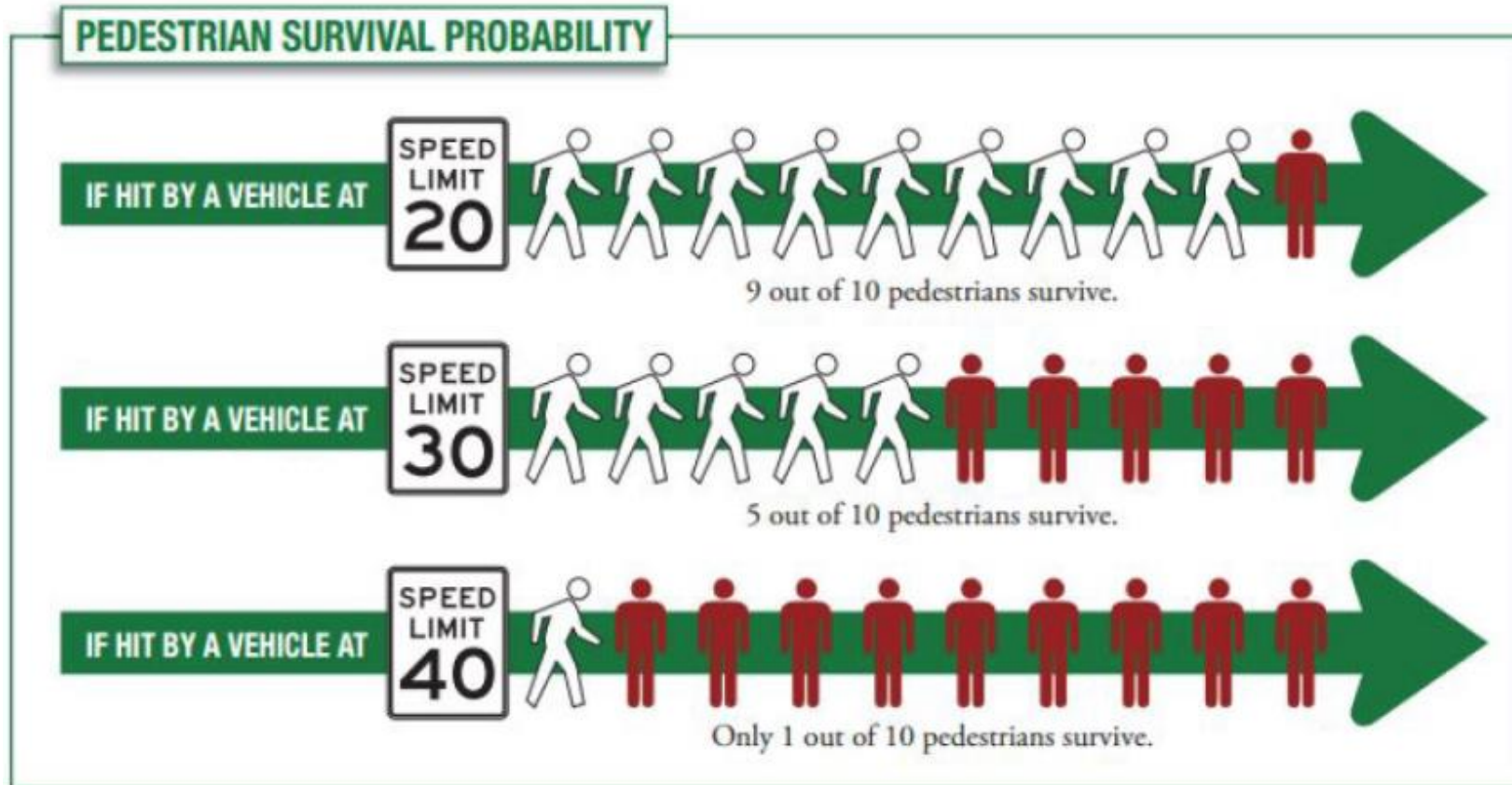
- Mobility Division, Office of Strategic Planning and Community Development (OSPCD)
 - Greg Hanafin, Transportation Planner
 - Adam Polinski, Senior Planner
 - Kate White, Outreach & Engagement Planner
- Engineering Division, Office of Infrastructure and Asset Management (IAM)
 - Rebecca Wright, Senior Project Manager - Streetscapes

For any questions throughout the project, reach out to transportation@somervillema.gov.

Vision Zero



- Vision Zero Action Plan is a commitment by the City to eliminate traffic deaths and serious injuries



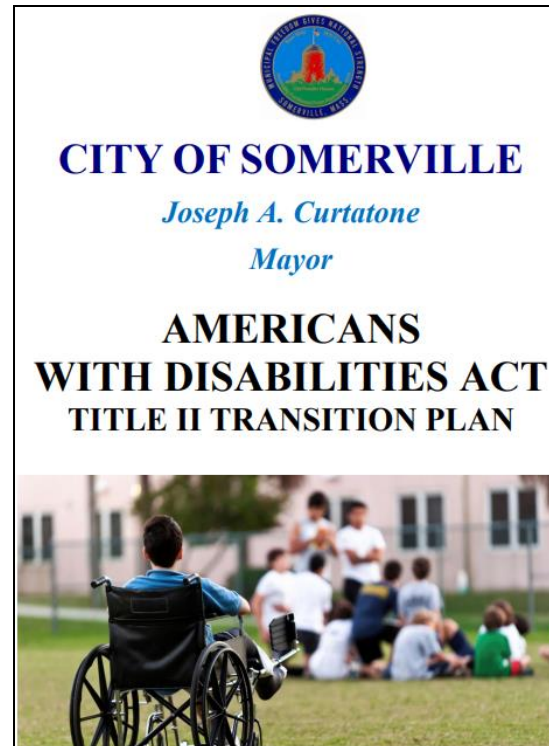
Citywide – Safe Streets Policies & Plans

Long-Range Guiding Plans



SOMERVISION2040

Sustainability • Diversity • Opportunity • Connectivity • Community



ARTICLE VII. - COMPLETE STREETS ORDINANCE

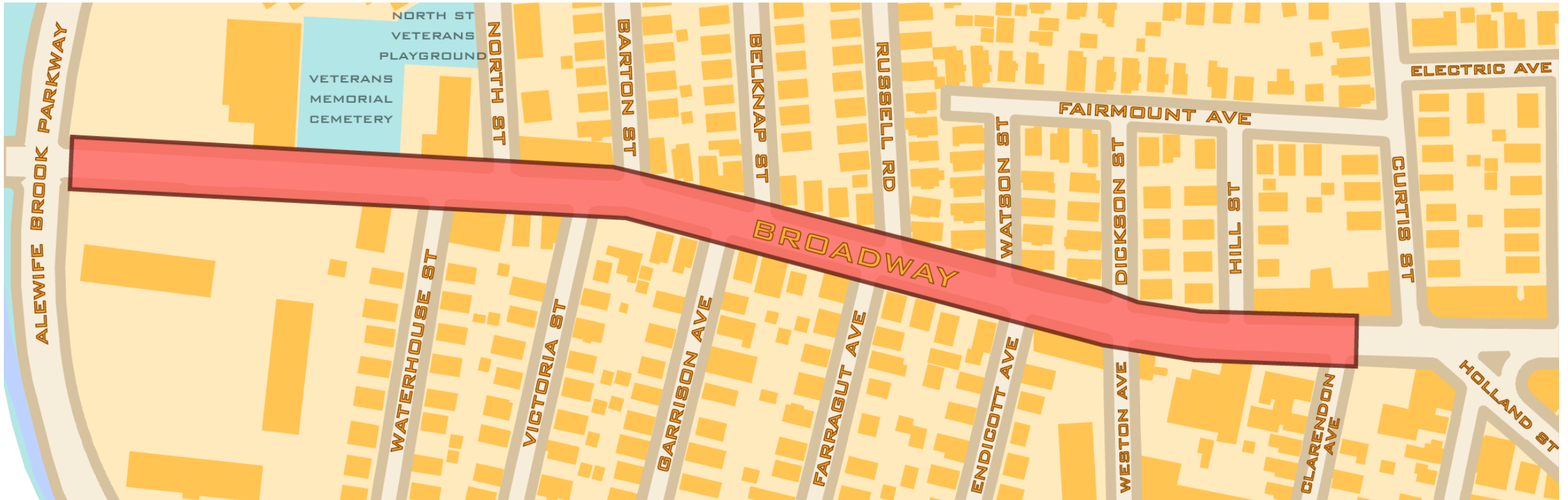
Sec. 12-116. - Complete streets ordinance.



What is the project?



Limit of Work



Broadway from Clarendon Ave to Alewife Brook Pkwy (Route 16).

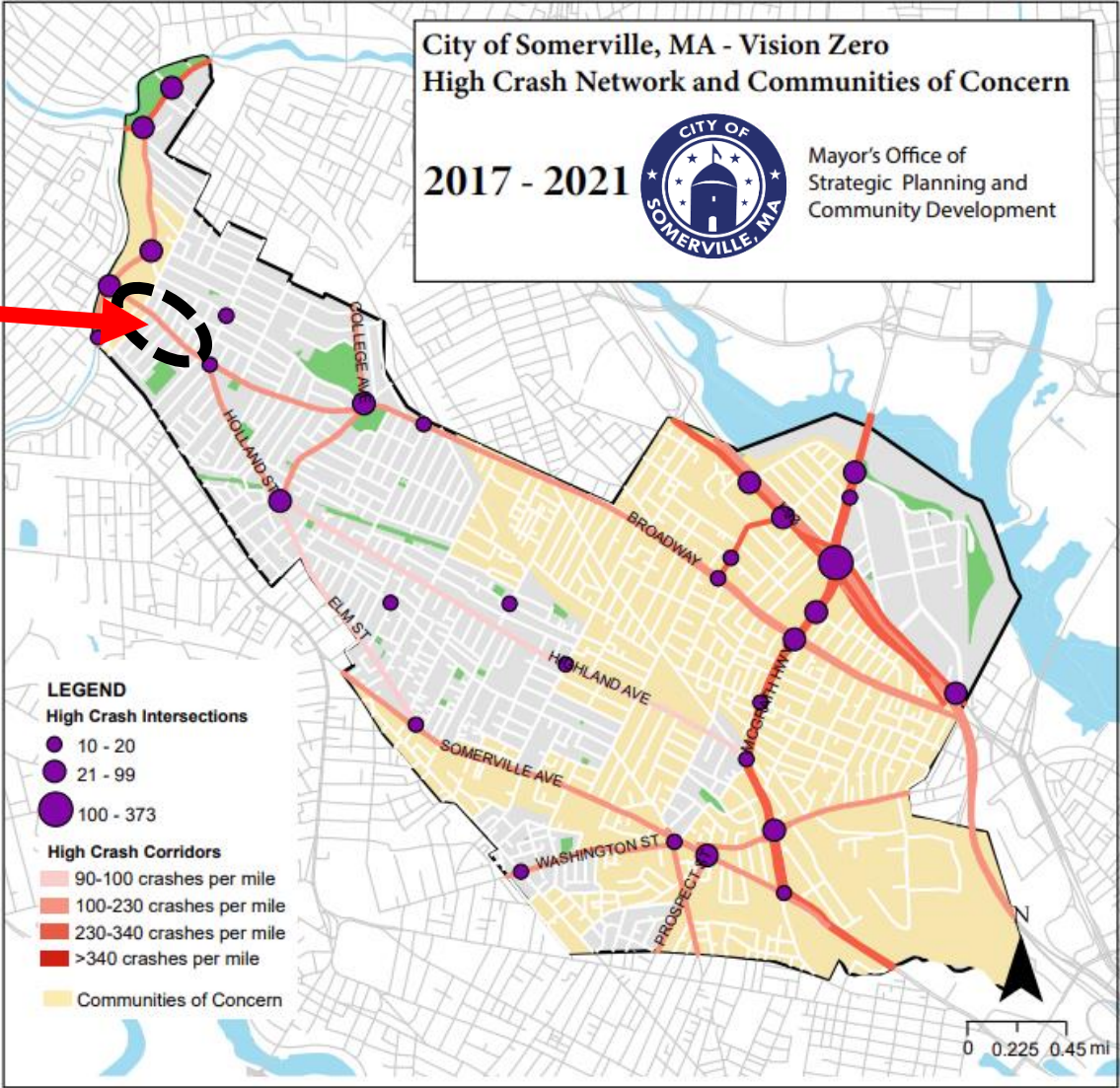
Pavement and Sidewalk Management Program

- City's program to manage the upkeep of roads and sidewalks.
- Roads are selected to either be partially paved or be reconstructed as Complete Streets.
- Complete Streets will incorporate additional safety improvements.
- West Broadway is on the list to be reconstructed as a Complete Street.



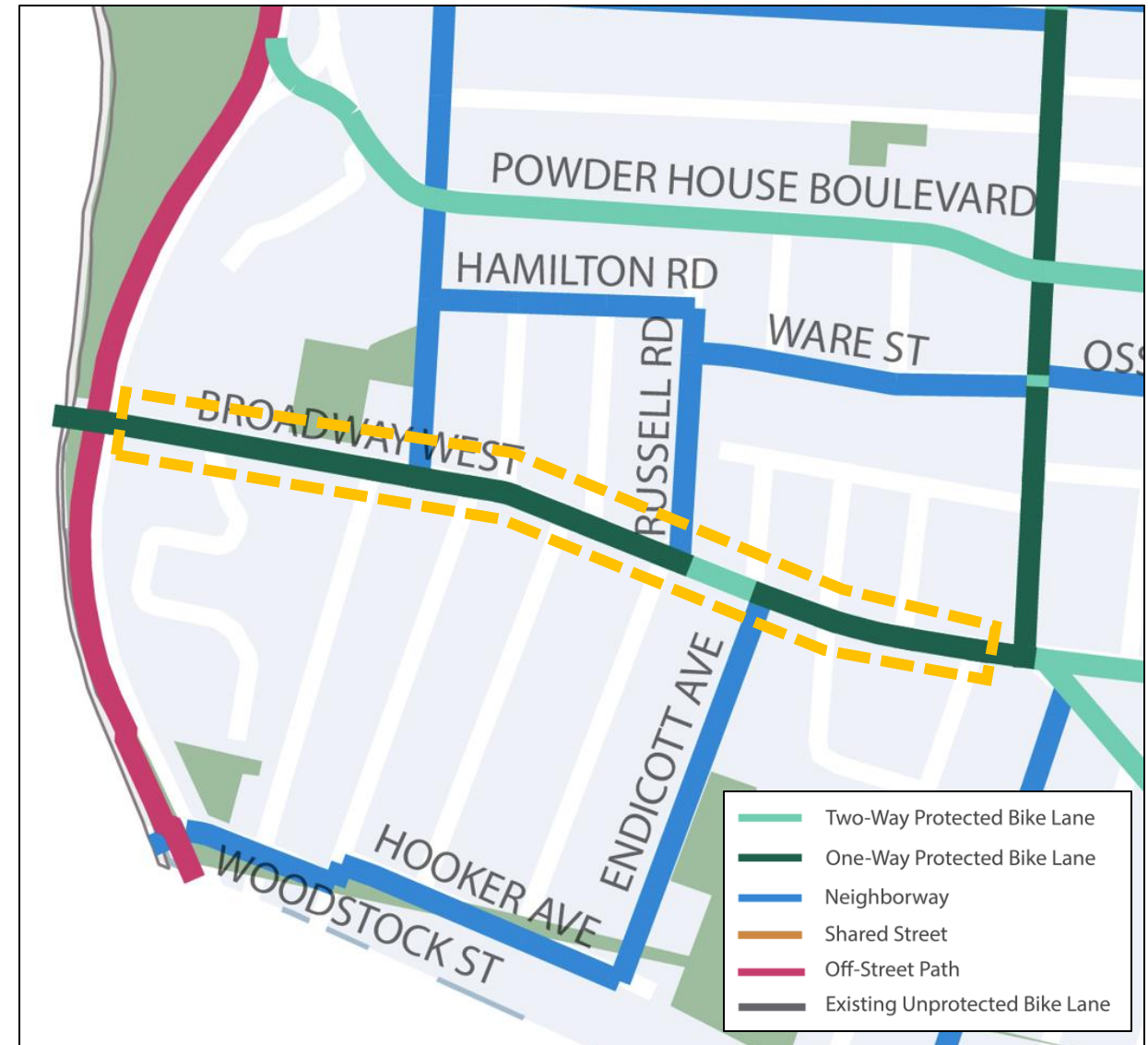
High Crash Corridor

West Broadway



Broadway on the Bicycle Network Plan

- Most of Broadway is designated for at least one direction of protected bicycle lane in the Somerville Bicycle Network Plan.
- One block between Endicott Ave and Russell Rd is designated for protected bicycle lanes in both directions.
 - This is critical for connecting the Neighborways on Endicott Ave and Russell Rd.
- Neighborways are low stress, low vehicle volume and slow speed streets prioritizing people walking, wheeling and biking. People biking can use the full street. If Neighborways are one-way for vehicles, bikes are still able to go in both directions.
- Learn more about the plan at www.somervillema.gov/bikenetwork



What is included?

Definitely



Reconstruction of sidewalks and curb ramps



Repaving of street from curb to curb



New tree plantings



Improved crosswalks



Designated bike facilities



Changes to parking regulations

Could be



Landscaping zones



Traffic calming



New crosswalks



Bus stop changes



Change of width of sidewalks and travel lanes



Traffic signal control



Green stormwater infrastructure

No



Substantial utility work

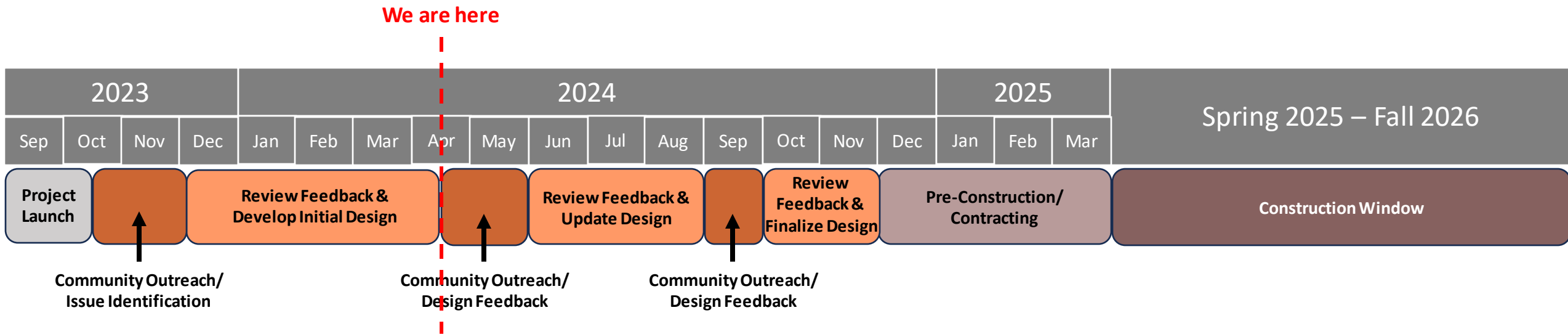


Street lighting



Network redesign (one-waying of streets)

Anticipated Project Timeline

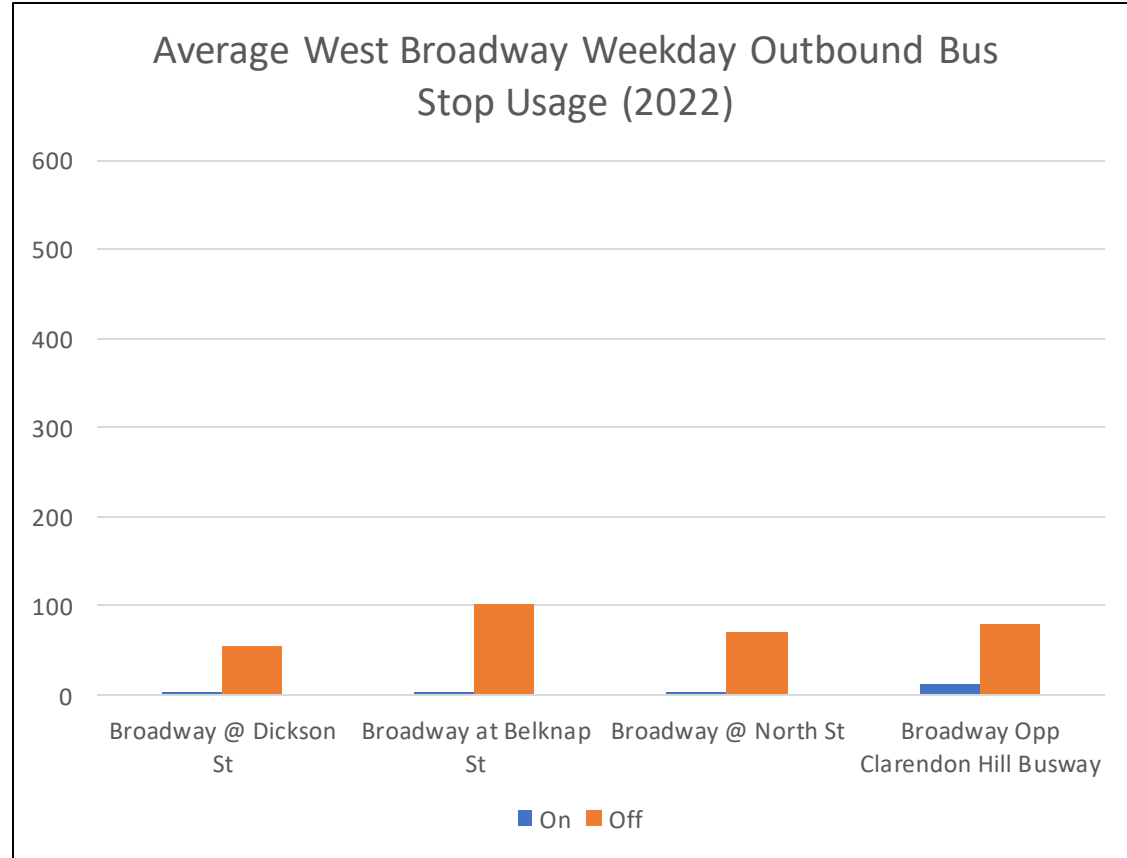
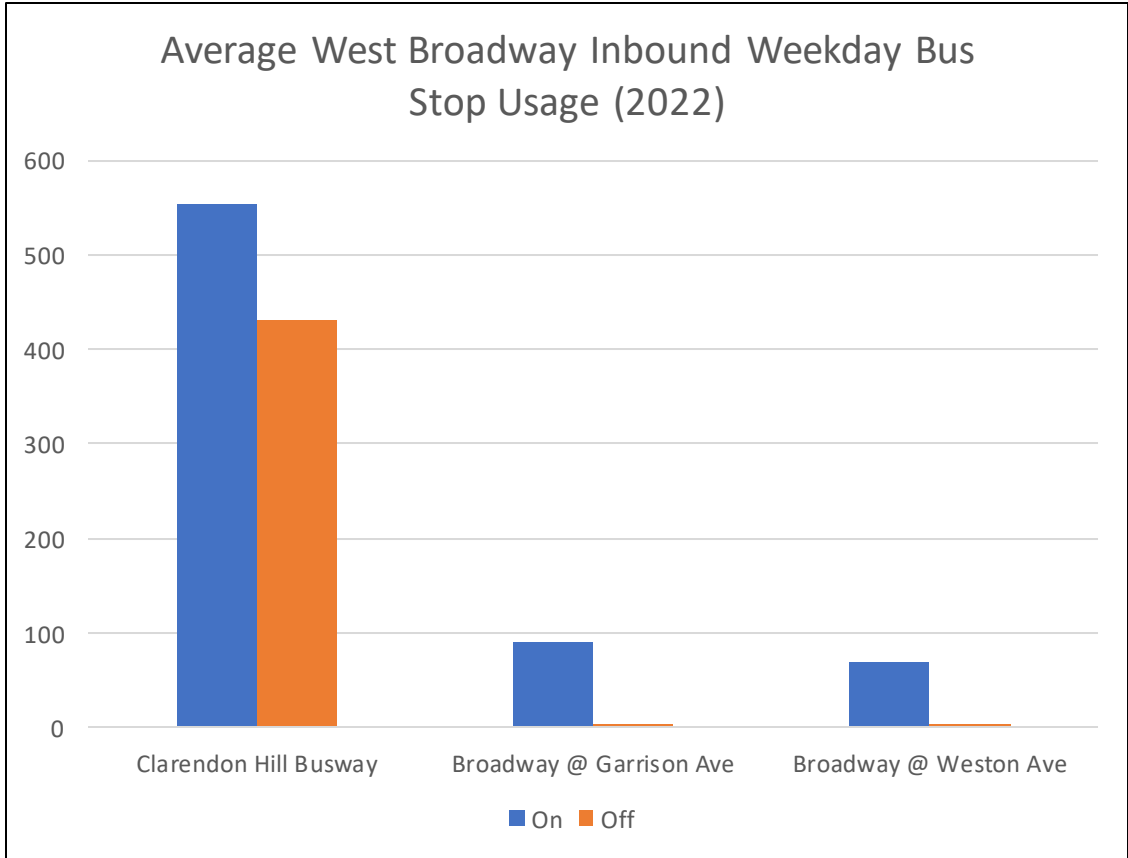


What have we learned so far?



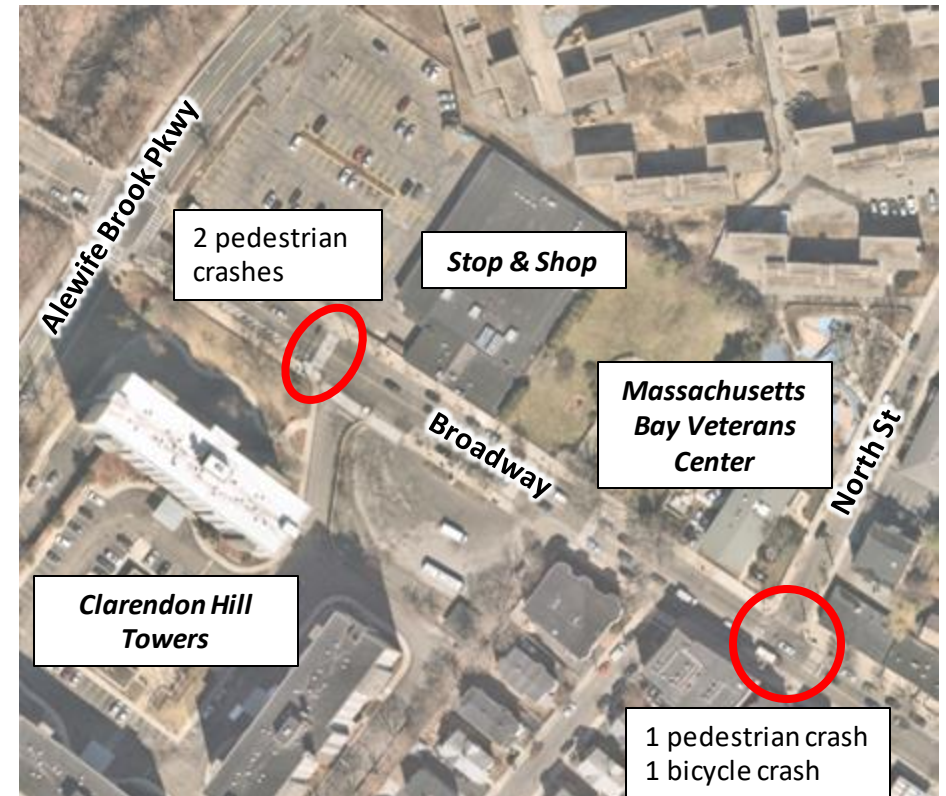
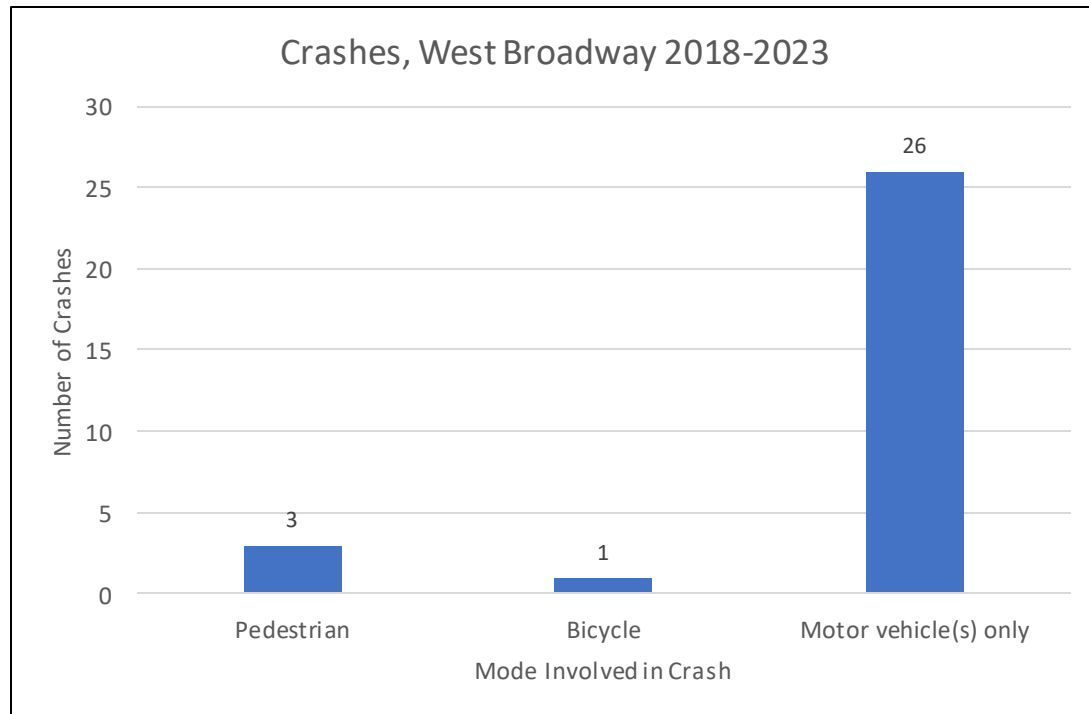
Bus Ridership

- On an average weekday in Fall 2022, about **1500** bus rider trips started or ended on West Broadway over three bus routes (87, 88, 89).



Crashes

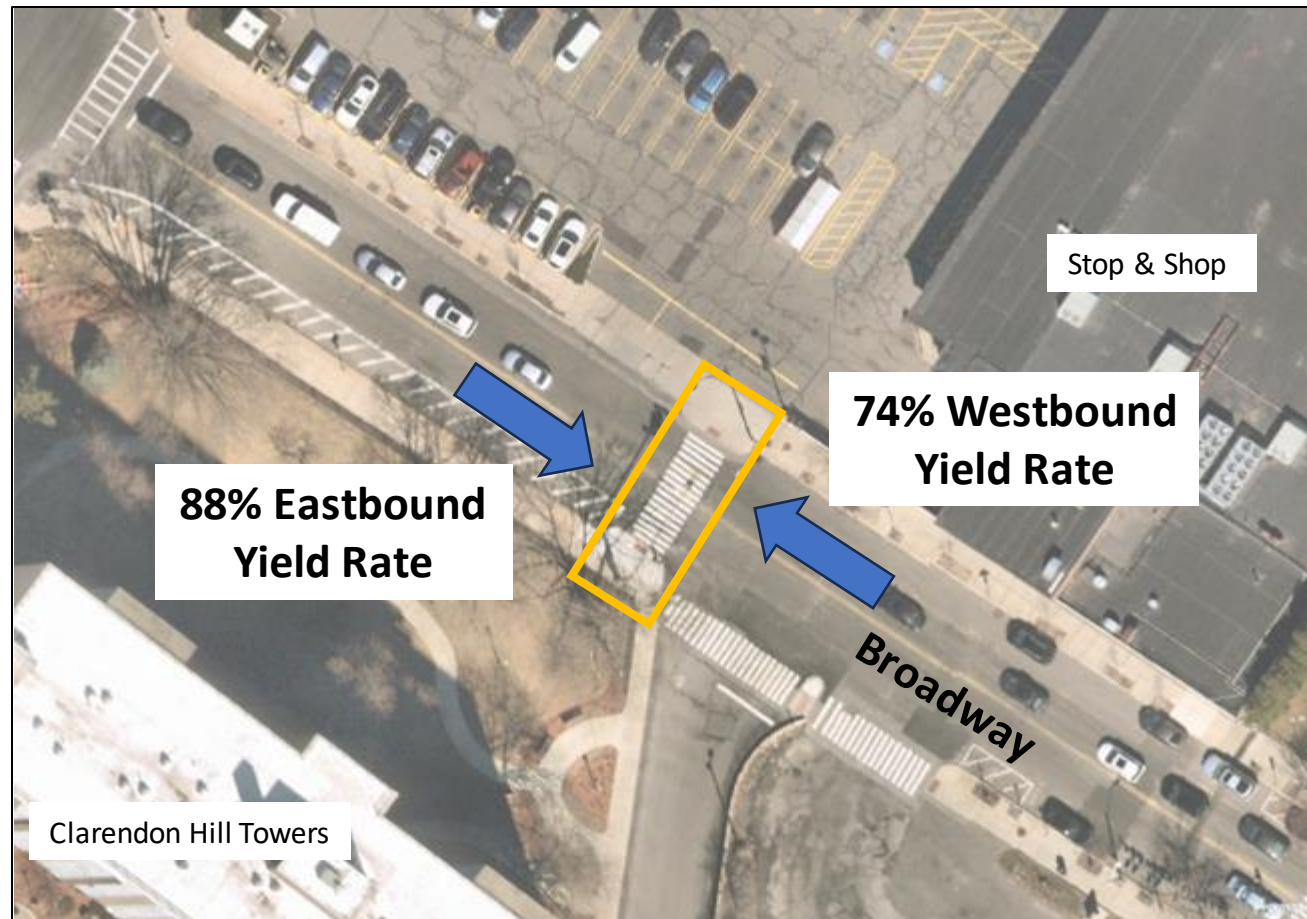
There were 30 reported crashes on West Broadway between January 2018 and October 2023 within the project scope. **Four** of these involved a person walking, rolling, or biking.



Crosswalk Compliance

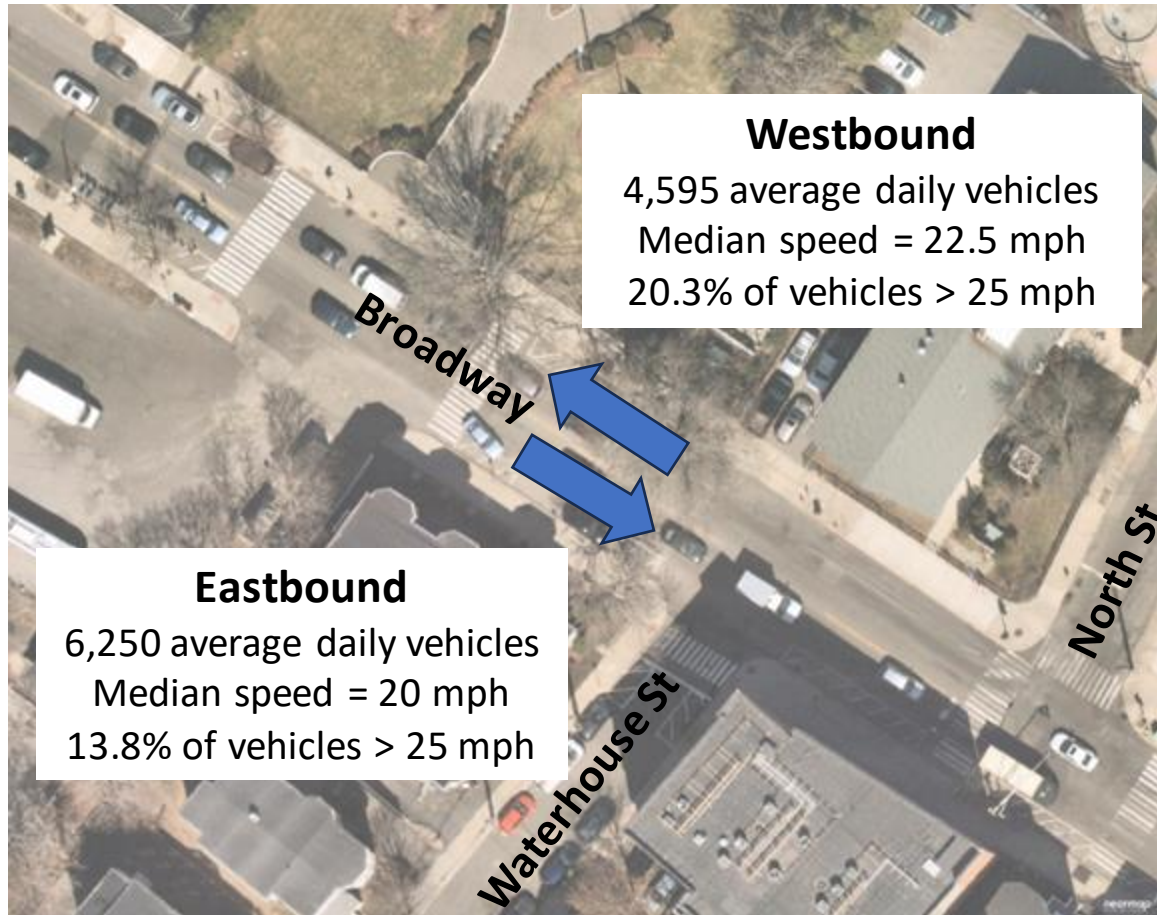
Yield Rate = Percent of time a vehicle stopped for a pedestrian in the crosswalk

Broadway @ Clarendon Hill Towers/Stop & Shop

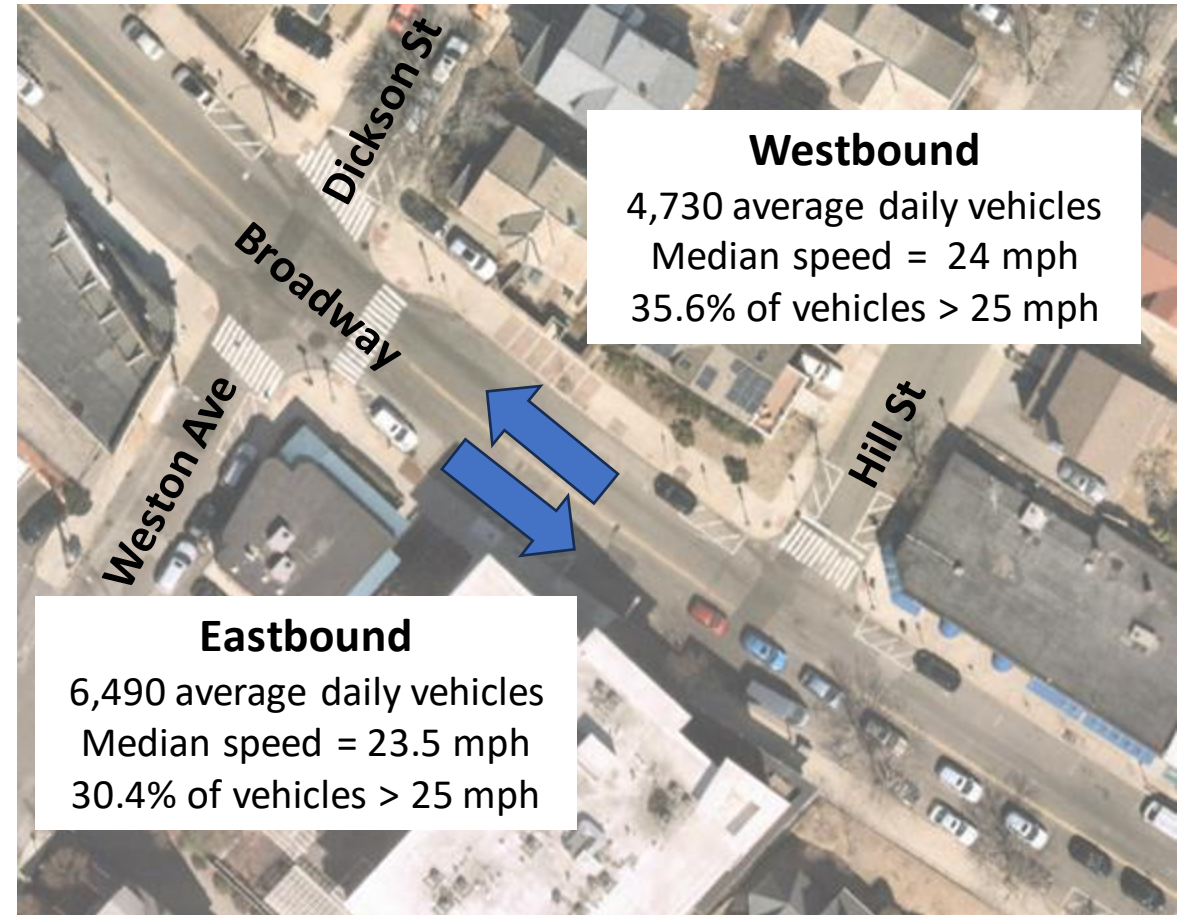


Vehicle Speeding & Volume

Broadway west of Waterhouse Street



Broadway between Dickson Street and Hill Street



Existing Parking Regulations

- Two-hour except by permit
- Meter
- Accessible
- Resident permit only
- Unregulated
- Loading zone



Parking Utilization – November 2023

Weekday
12 PM

Parking Availability*

- 0 spaces
- 1 space
- 2 spaces
- 3 or more spaces



* Accessible spaces and loading zones are not include in the parking utilization analysis

Parking Utilization – November 2023

Weekday
6 PM

Parking Availability*

- 0 spaces
- 1 space
- 2 spaces
- 3 or more spaces



* Accessible spaces and loading zones are not include in the parking utilization analysis

Parking Utilization – November 2023

Weekday
9 PM

Parking Availability*

- 0 spaces
- 1 space
- 2 spaces
- 3 or more spaces



* Accessible spaces and loading zones are not include in the parking utilization analysis

Pre-Concept Design Community Engagement

					
<p>Virtual Community Meeting</p> <ul style="list-style-type: none">•October 23•Announced meeting on project & city website on September 19•Posted flyers for meeting on October 12	<p>Online Feedback Survey & Public Input Map</p> <ul style="list-style-type: none">•October 13 to November 30	<p>Street Outreach Pop-Ups</p> <ul style="list-style-type: none">•Intersection of Endicott Street and Broadway, December 2	<p>Clarendon Hill Engagement</p> <ul style="list-style-type: none">•Mobile Market Outreach, October 12•In-person Meeting in Community Room, November 9	<p>Committee & Commission Meetings</p> <ul style="list-style-type: none">•PTAC, November 16•SBAC, October 5•Commission for Persons with Disabilities Officers, November 28	<p>Business Block Walking</p> <ul style="list-style-type: none">•October 19
<p>49 participants</p>	<p>230 participants</p>	<p>Over 100 participants</p>	<p>Over 55 participants</p>	<p>Over 18 participants</p>	<p>16 businesses & organizations</p>
<p>September 19, 2023</p>			<p>December 6, 2023</p>		

What did we hear from community members?

• Transit

- Bus lanes – Peak hour, shared with bikes
- Transit Signal Priority
- Prioritizing buses, especially for connectivity for the Clarendon Hill community
- More benches and bus shelters at bus stops

• Biking

- Safe facilities in both directions
- More bike parking near businesses
- Floating bus stops to remove conflict with bikes
- Negative impact to people with disabilities and older adults who rely on driving and walking
- Feel unsafe due to poor pavement quality and vehicle speeding

• Sidewalks

- Damaged panels
- Wider sidewalks
- Continuous sidewalks at driveways and small intersections
- Accessible curb ramps

• Speeding, unsafe driving, and other safety issues

- Turning conflicts at gas station
- More signage
- Flashing lights to encourage people driving to slow down
- Congestion prevents speeding but then see behaviors like red light running and low crosswalk compliance

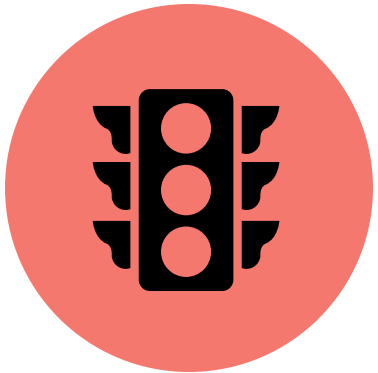


What did we hear from community members?



- Pavement condition
 - Ensure pavement durability for buses and trucks
 - Poor quality make it unsafe to drive and bike
 - Add traffic calming after repaving to prevent speeding

- Traffic management, signals, and pavement markings
 - Signal timing causing high congestion at peak times
 - Left turn concerns at signalized intersections
 - Severe congestion in Teele Square holds up the bus
 - High volumes come in and out of Somerville at Alewife Brook Parkway



- Amenities/Operations
 - More trash cans near North Street
 - More parking enforcement



- Parking
 - Necessary for business operations but walking and biking infrastructure could be critical for small business access
 - Curbside access critical for picking up food or unloading product
 - Businesses loading and customer parking needs
 - Electric vehicle charging



- Environment and greenery
 - More green space to sit with benches and shade coverage
 - More plantings in wide sidewalk
 - No trees in some segments of Broadway

What did we hear from community members?

- Crosswalks and intersections

- Many comments, questions, and concerns that we heard focused on intersections and crosswalks along the street.
- People driving often fail to yield to people waiting to cross and speed through when the street is not congested.
- Many advocated for flashing crosswalk signs, crossing islands, and other features to make intersections safer.
- Some requested that more of the side street crosswalks be moved closer to Broadway rather than set back to make pedestrians more visible to turning vehicles.
- Some shared that new protected bike lanes make visibility at crosswalks worse.



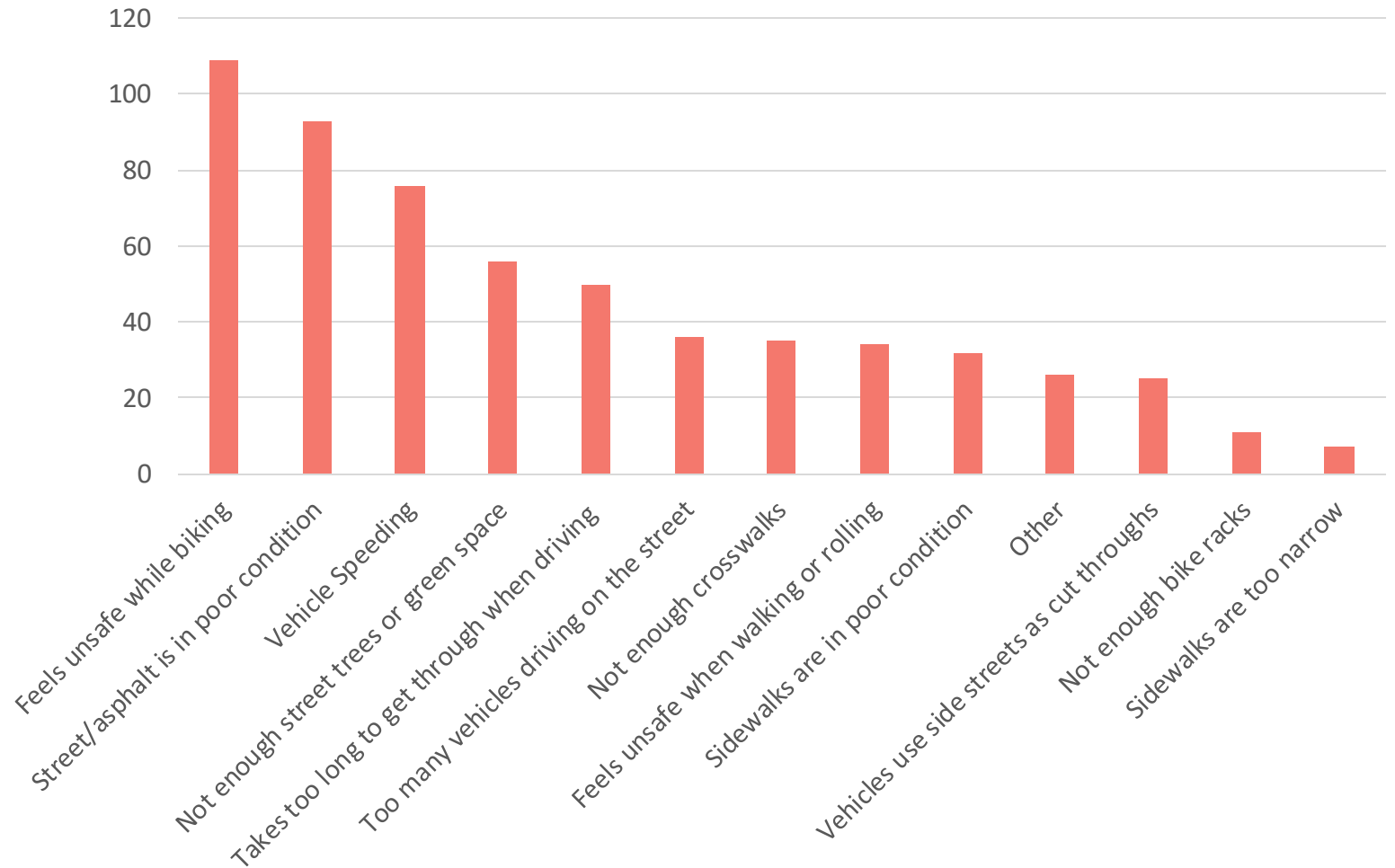
Most Mentioned Intersections

- Clarendon Hill Towers at Stop & Shop
 - Lack of safety at crossing
 - Speeding from Alewife Brook Parkway
 - Critical for Clarendon Towers residents
 - Pavement degradation makes it challenging for people with disabilities
 - Request traffic signal and prioritizing this crossing
- Clarendon Avenue
 - High volumes and lack of signal at this specific intersection causes congestion and drivers to quickly take a left from the westbound direction ignoring pedestrians in the crosswalk.
 - Turn often blocked by vehicles trying to travel into Teele Square causing backups in the westbound direction.
- Alewife Brook Parkway
 - Vehicles make left and right turns during dedicated pedestrian phases causing safety issues for people crossing
 - Lack of safe connections to Alewife Brook Greenway
 - Congestion at intersection encourages erratic and unsafe behavior

Online Survey Highlights

- Who did we reach?
 - Total: 226 survey responders
 - **13.1% identified as living on West Broadway**
 - **55.3% identified living within a 5-minute walk.**
- How do you use Tufts Street? Most selected...
 - 77.8% shared that they go to a business or businesses
 - 68.9% use it to get to Route 16
 - 58.7% use it to go to Davis Square
 - 58.7% use it to go to Stop & Shop,
 - and 44.4% shared that it's their primary way to leave and get to their home.
- When asked how important it was for the City to address a series of transportation related items, the most selected as very important were...
 - Improving safety at existing crosswalks
 - Vehicle speeding

What are your top 3 transportation related concerns?



Concept Design Community Engagement (Spring 2024)



Virtual Office Hours

Thursday, April 25, 5:30 p.m. – 7:30 p.m.

- Join anytime on zoom to talk to members of the project team, ask your questions, or provide comments on the concept design.

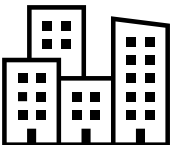


Concept Design Survey

Available from April 13 to May 31

- Take the online survey to share your reactions to the concept design.
- If you need help taking the survey, call us at 311.

Flyering & Small Business Engagement



April and May

- Members of the project team flyer homes on Broadway to share information about upcoming community meetings and survey opportunities.
- The project team also block walk to local businesses to talk directly to business owners/managers about the project.



Community Events & Street Outreach

Concept Design Open House, April 13, 1:00 p.m. – 4:00 p.m.

- Showcase concept design

North Street Outreach Pop-Up, May 14, 4:30 p.m. – 6:30 p.m.

- Connect with community members walking by to share information about the project and concept design

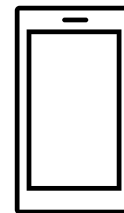
Clarendon Courtyard Outreach

- Connect with Clarendon Towers residents to share information about the project design and discuss Clarendon crossing options

Weston Manor Tenants Outreach

- Connect with Weston Manor Tenants to share information about the project design and discuss the Neighborways options

Communications



- Mobility Monthly Newsletter
- Direct email to meeting attendees
- City Weekly Newsletter
- City social media channels

What design is being proposed?



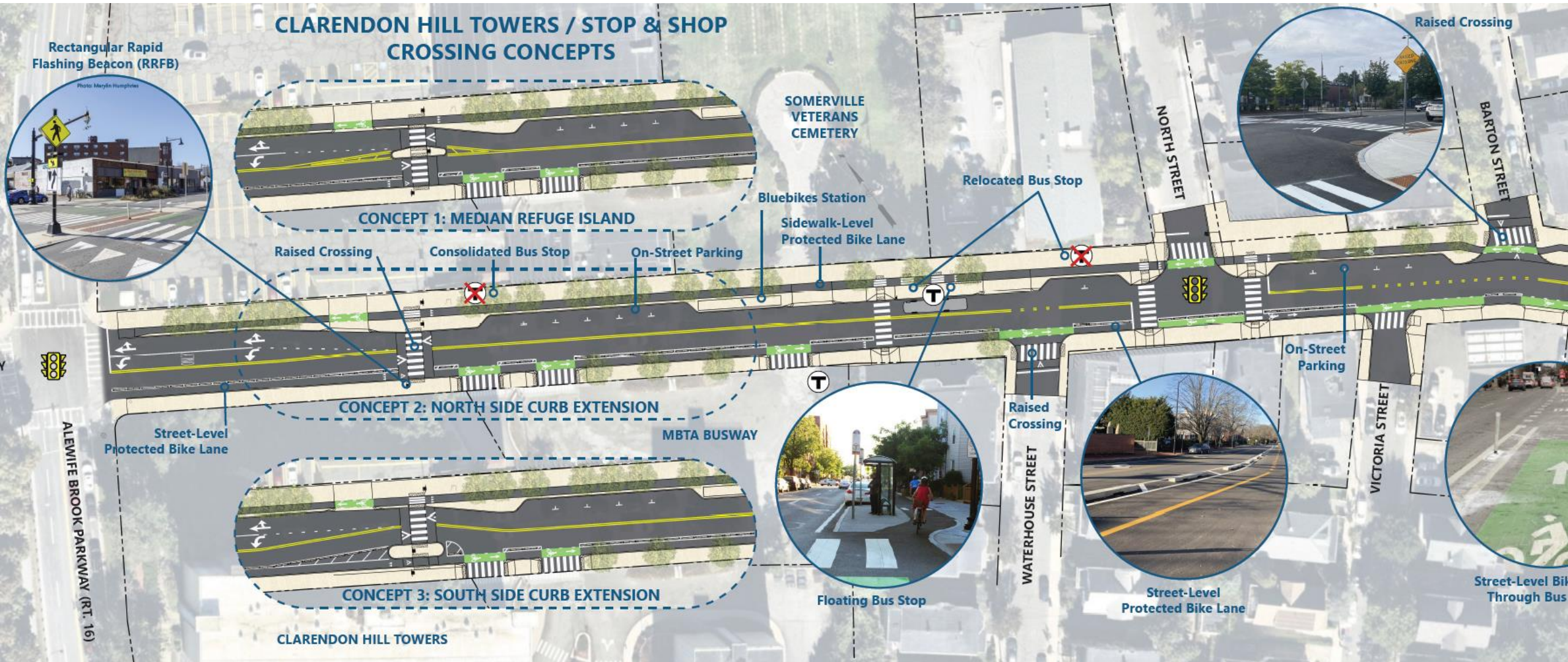
Big Picture

- Safer crossings and intersections
 - Shortened crossing distances
 - Raised many crossings to sidewalk level
 - Added new crossings to connect future neighborways
- Enhanced bus rider experience and operations
 - New floating bus stops
 - Space for new shelters and benches
 - Optimized stop spacing
- Protected bike lanes (PBLs) in both directions
 - Mix of sidewalk and street level PBLs
 - Pre-cast concrete curb protection for street level PBLs
- One side of on-street parking
 - Prioritized preserving parking and loading near businesses
 - Next step: Evaluate parking regulations
- New space for street beautification and amenities

Alewife Brook Parkway to Barton Street – Existing



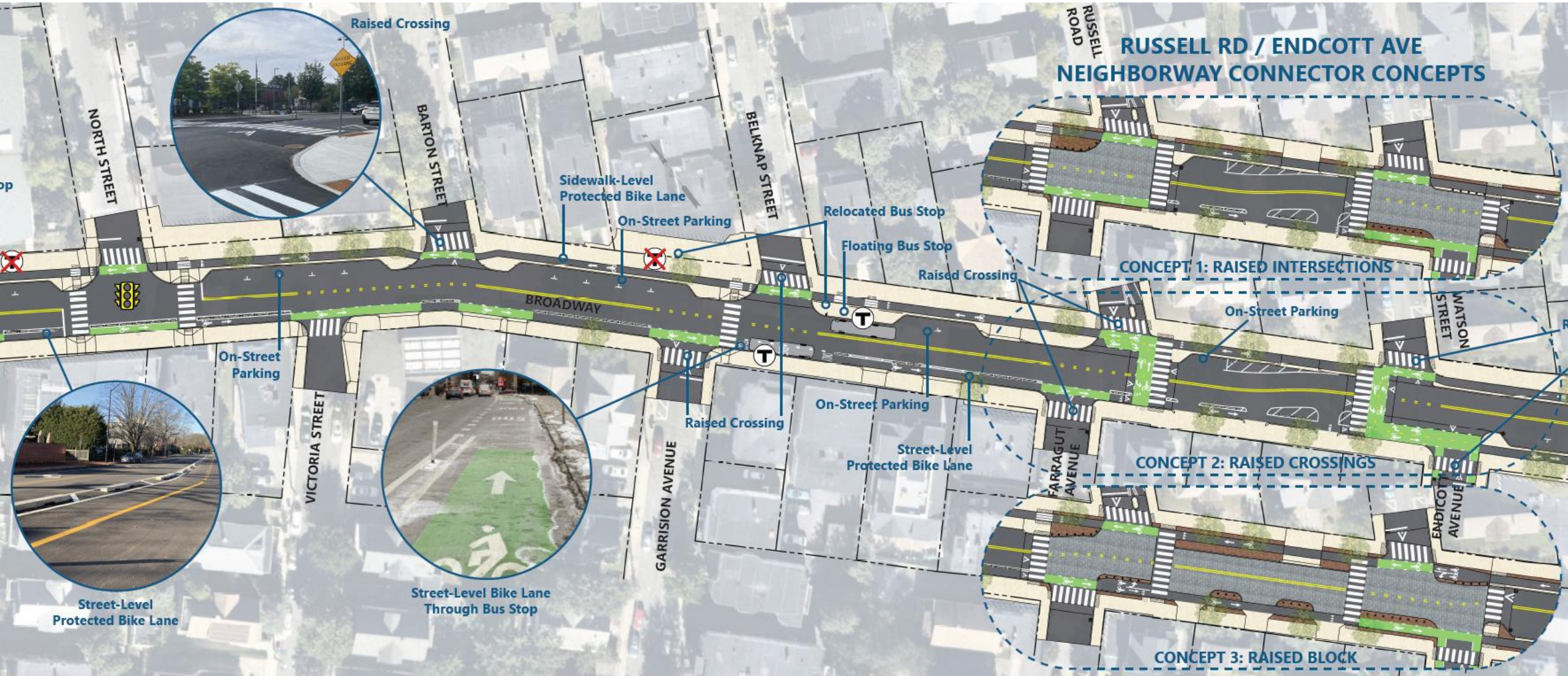
Alewife Brook Parkway to Barton Street – Proposed



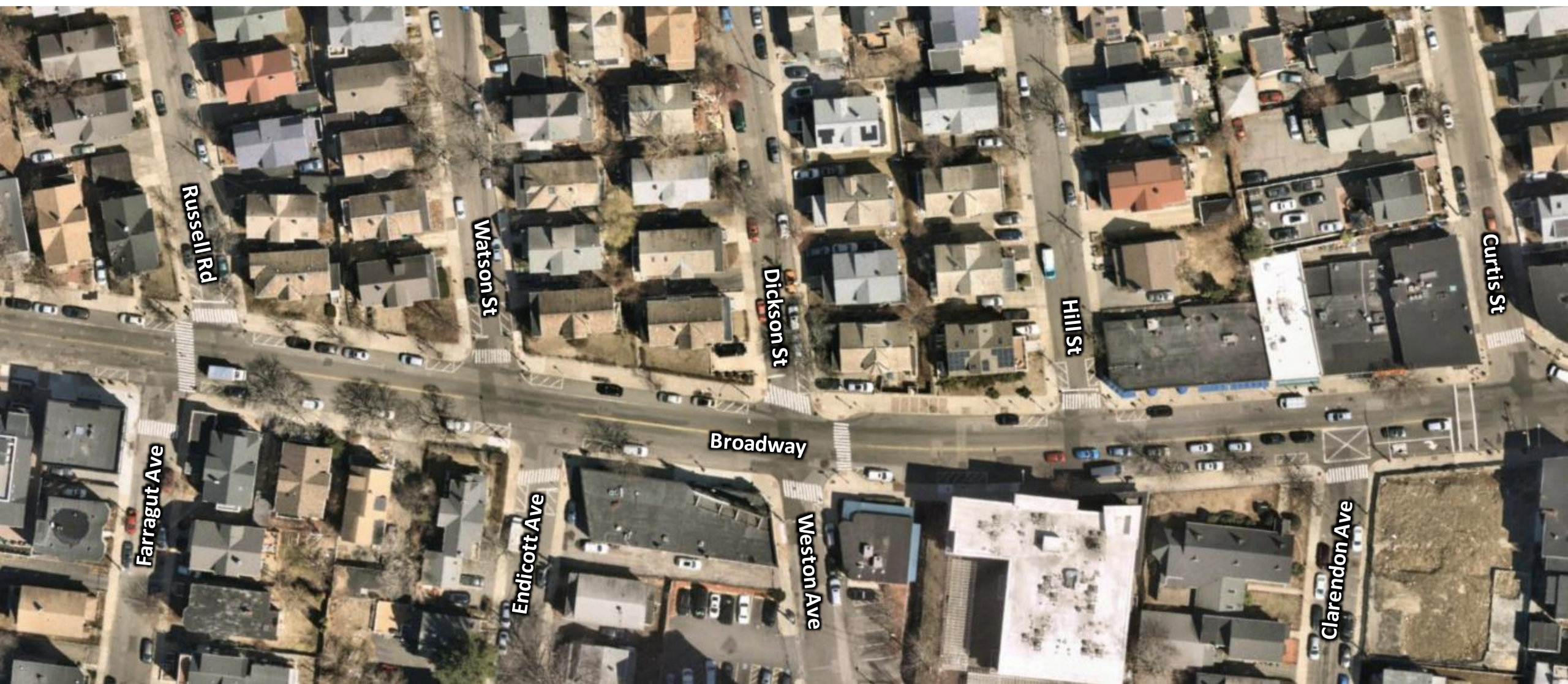
North Street to Endicott Avenue – Existing



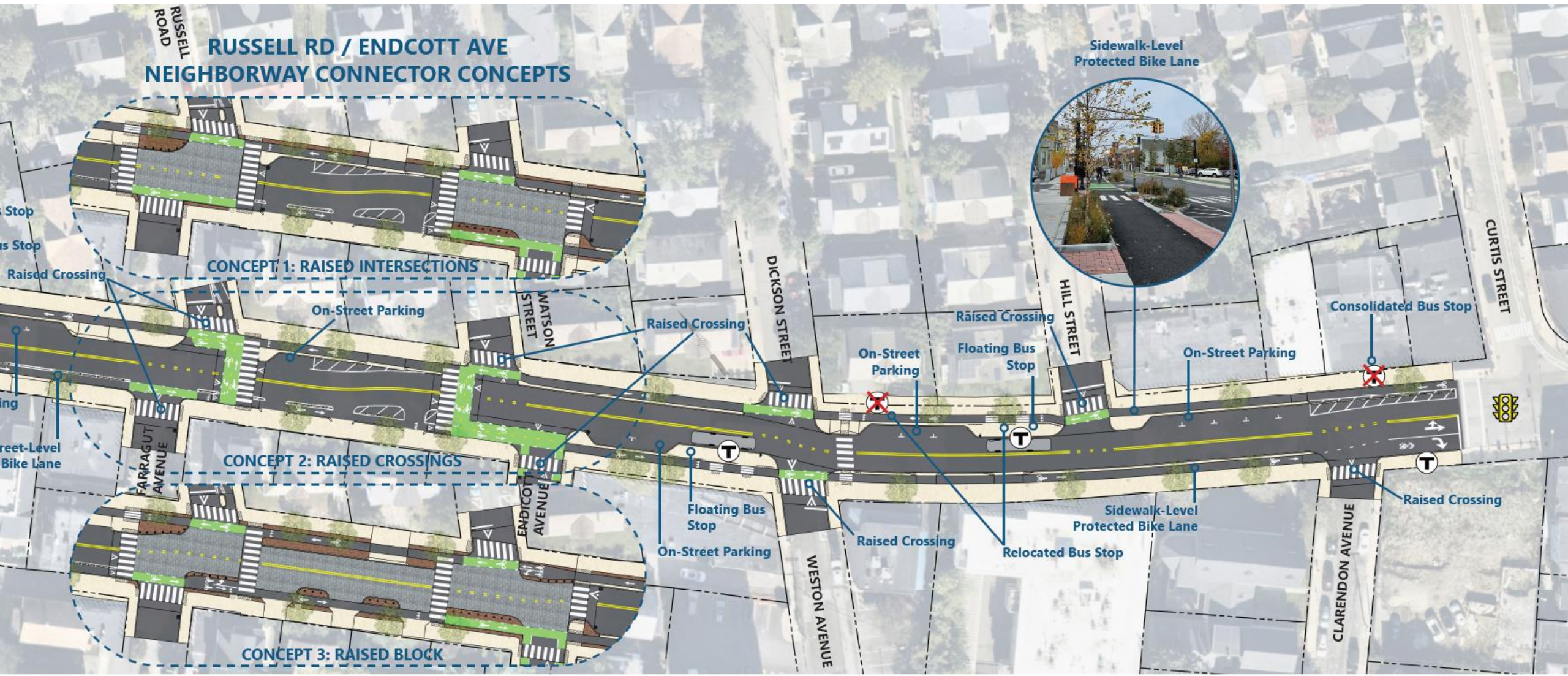
North Street to Endicott Avenue – Proposed



Farragut Avenue to Clarendon Avenue – Existing



Farragut Avenue to Clarendon Avenue – Proposed



Sample Street View

Clarendon Hill Busway Looking East



What comes next?



How will feedback shape the next stage of design?

We want to understand what design elements make people feel the most safe and comfortable as they travel the street.

We hope to gather preferences for crossing options at Clarendon Towers and for the Neighborways intersections.

We are looking for feedback on

- Locations of crosswalks
- Bus stop design and location changes
- Proposed bicycle facilities
- Potential parking regulation changes
- Opportunities for green space

We will take all the feedback, incorporate it with our internal reviews and produce a more developed design to share in the coming months.

Other ways to engage at this stage



- Take the *West Broadway Concept Design Survey*.
- Subscribe to the Mobility Monthly Newsletter for project updates.
- Join us at our street outreach events.
- Share your ideas via email to transportation@somervillema.gov or call us at 311 (617-666-3311).
- Find all information at www.somervillema.gov/westbroadway

THANK YOU!