



CITY HALL

Community Meetings

Information • Access • Community

Ward 4

OCTOBER 10, 2023

MAYOR KATJANA BALLANTYNE

COUNCILOR JESSE CLINGAN

Agenda

- **Quick City Updates**
 - Victoria MacGregor, Community Engagement Specialist
- **Our City, Our Climate, Our Time to Act**
 - Mayor Katjana Ballantyne
- **Engineering Update**
 - Brian Postlewaite, Director of Engineering
- **Inspectional Services: Rodent Control**
 - Colin Zeigler, Environmental Health Manager
- **Somerville Police Department**
 - Chief Charles Femino & Captain James Donovan
- **Digital Bridge Initiative**
 - Blair Wong, Project Specialist & Luis Quizhpe, Strategic Planning & Equity Manager

Have a Follow Up Question or Comment?

Email us at **cm@somervillema.gov**



*Watch after 11/2/23 at **YouTube.com/SomervilleGovTV***

Voting is open for the first-ever Participatory Budgeting cycle – spend \$1 million in your city!



Sidewalks?
Compost bins?
Green space?
Arts education?

- Anyone 12 and older can vote now!
- Funded projects announced after voting period closes on Friday, October 13

VOTE

www.somervillema.gov/PB



2023 Election & Voting Information



Use a Blue Ballot Box for all Election Items

•Locations:

City Hall concourse, 93 Highland Ave.

East Somerville Community School, across from 68 Glen St.

In front of the Argenziano School, 290 Washington St.

In front of the Somerville Community Baptist Church at 31 College Ave.

In front of the West Somerville Neighborhood School at 177 Powder House Blvd.

Date	Event/Deadline
Friday, October 27 by 5 p.m.	Register to Vote or Change Address for November Election in Elections Office <ul style="list-style-type: none">- Register by midnight on Oct. 28 by going online to www.registertovoteme.com
Tuesday, October 31 by 5 p.m.	Submit 'Vote by Mail' Application for November Election
November 1 -3	Early Voting at City Hall Council Chambers (93 Highland Ave.) <ul style="list-style-type: none">- Nov. 1 (8:30 a.m. to 4:30 p.m.)- Nov. 2 (8:30 a.m. to 7:30 p.m.)- Nov. 3 (8:30 a.m. to 12:30 p.m.)
Tuesday, November 7	City Election

Visit somervillema.gov/elections for more information.

Ward 4 Polling Place Updates

PRECINCTS 4-2 & 4-2A

- **Moved to:** Pearl Street Park Building (240 Pearl St.)

PRECINCT 4-3

- **Moved to:** Brazilian Presbyterian Church (212 School St.)

Find your polling place at somerillema.gov/pollingplaces

Somerville Teen Programs & Spaces

- Free for all Somerville teens
- Geared towards ages 12 to 18

Follow the Teen
Centers on Instagram:
@somerville_teencenters

Teen Center Membership

- Access to all Parks & Rec Teen programs including open gyms, clubs, activities, etc.

Apply for FREE Membership:



somervillema.myrec.com

Powderhouse Teen Center Membership (850 Broadway)

Hours:

Mondays: 6 to 8 p.m.
Wednesdays: 6 to 8 p.m.
Fridays: 3 to 6 p.m.

Apply for FREE Membership:



bit.ly/48Cu38j

The Teen Room – Central Library (79 Highland Avenue)

Hours:

Monday-Thursday: 9 a.m. to 9 p.m.
Friday: 9 a.m. to 6 p.m.
Saturday: 9 a.m. to 5 p.m.
Sunday: 1 p.m. to 5 p.m.*

somervillepubliclibrary.org/teens

Somerville Center for Adult Learning Experiences (SCALE)

**IF YOU ARE
INTERESTED IN
A CAREER IN
HEALTHCARE**

**THIS
CLASS IS
FOR YOU!**

REGISTER NOW



SCAN ME



**WANT TO EXPLORE THE
COMPUTING WORLD?**

**Join us in Introduction to
the IT Landscape Class**

REGISTER NOW!



FREE for Somerville residents
12 Week Commitment (Oct. 3 through Dec. 21)
Morning Classes: 9 a.m. to 12 p.m.
Evening Classes: 6 p.m. to 9 p.m.

Docent Tours & Volunteer Opportunities

- Docent tours run weekly through October. Locations at locations including: Milk Row Cemetery, Prospect Hill Tower & Old Powder House
- **Volunteer for Somerville's Docent Program!** Email Brandon at bwilson@somervillema.gov
- Find upcoming tours at somervillema.gov/calendar
- Follow the Somerville Historic Preservation Commission on Facebook (fb.com/somervillehpc)



Upcoming Events

MAYOR KATJANA BALLANTYNE

UNION SQUARE WALKING TOUR

FREE!

To RSVP (ideally): call/email
Brandon at 617-776-3938
or bwilson@somervillema.gov




**SUNDAY,
OCTOBER
15TH**

WITH
ARCHITECTURAL
HISTORIAN
**EDWARD
GORDON**

**START AT
DUNKIN DONUTS
282 SOMERVILLE AVE
UNION SQUARE**

2 - 4:30 PM

**FINISH AT
LOCAL EATERY (TBD)**



Health and Human Services – Program Updates & Expansions

FREE* Flu Vaccine Clinics

- **October 12 & 26**
 - Council on Aging (167 Holland St.)
- **October 19**
 - Clarendon Hill Towers Mobile Farmers Market (1372 Broadway)
- **November 8**
 - West Somerville Neighborhood School (177 Powder House Blvd.)
- **November 16**
 - East Somerville Community School (50 Cross St.)

Register at
somervillema.gov/vaccines

We continue to provide and improve our services

The Council on Aging hosts engagement events including the Somerville Senior Picnic

Prevention Services supports our communities and distributes Narcan and first aid supplies



NEW HHS Initiatives!

Community Health Workers

The first Advisory Council meeting was held last month with the goal of deploy three CHWs to support our communities in 2024

Mental Health Services

Our new Mental Health Services manager has begun assessing how we can expand and improve our mental health services for vulnerable populations.

Housing Division Updates

AFFORDABLE UNITS CREATED - CITY-WIDE

- Over the last 2+ years (since August 2021), the Housing Division has helped fund or has administered creation of 265 units of affordable housing (249 Inclusionary units and 16 'purpose-built' units).
- Of the 265 total units:
 - 242 units are rental housing
 - 23 units are homeownership units

FOR MORE INFORMATION

Want to get notified of upcoming opportunities?

Go to the link below, or just go to the City website and search for 'Somerville Inclusionary Housing Program. You can sign up to be notified of new housing opportunities, either by email or regular U.S. mail.

Here's the link:

<https://www.somervillema.gov/departments/programs/inclusionary-housing-program>

Upcoming City Events

somervillema.gov/calendar

SomerStreets: Monster Mash
Sunday, October 22



Truck O' Treat
Thursday, October 26



Stay in Touch With Us

**Subscribe to
City Mailing Lists &
Newsletters**

somervillema.gov/subscribe



**Contact 311 by phone,
email, online, or app**

somervillema.gov/311



Follow Us on Social Media



[Fb.com/SomervilleCity](https://fb.com/SomervilleCity)



@somervillecity



@somervillecity



Our City, Our Climate, Our Time to Act

MAYOR KATJANA BALLANTYNE

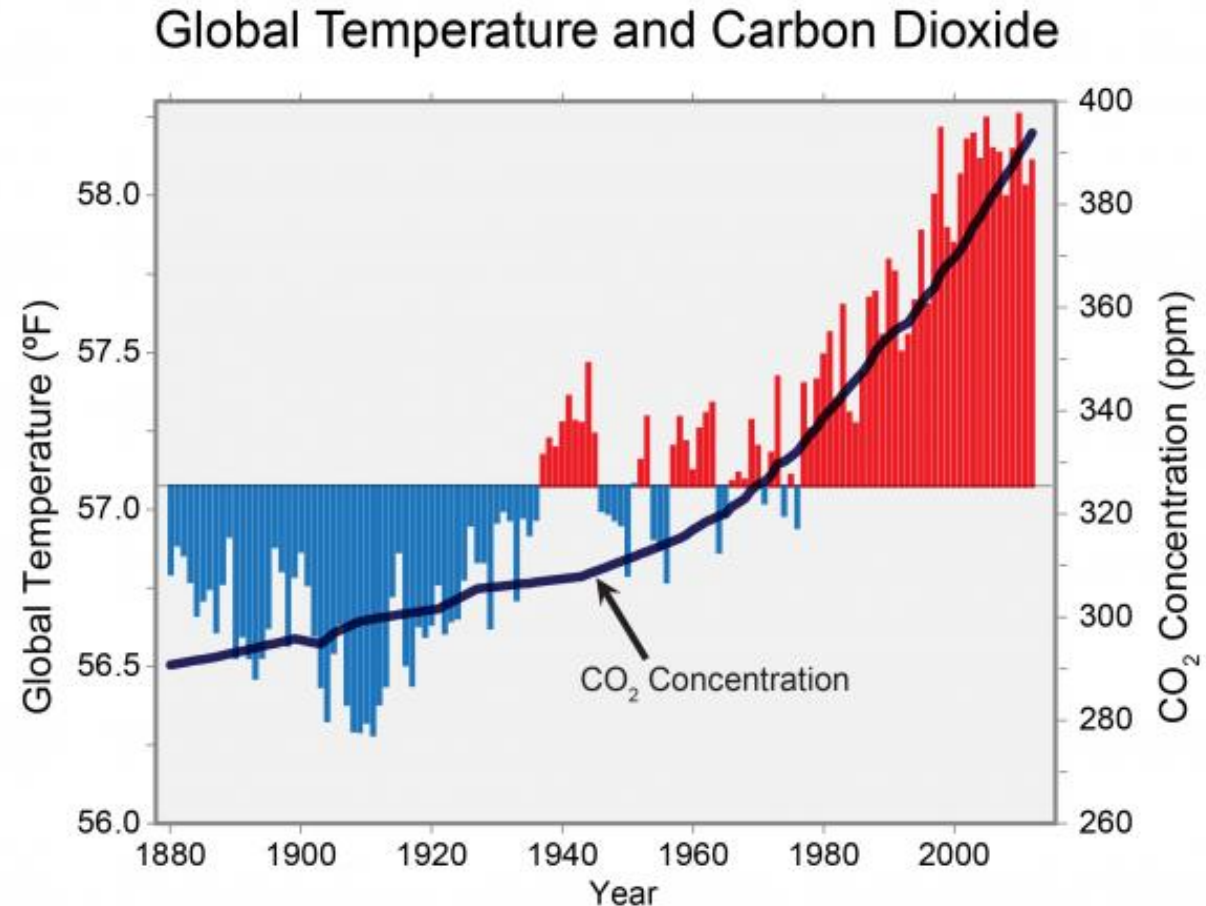


First, two questions

What is climate change?

- Long-term shifts in temperatures and weather patterns.
- Since the 1800s, humans have been the main drivers of climate change.
- Burning fossil fuels generates greenhouse gas emissions that trap the sun's heat and raise temperatures.
- Warmer temperatures contribute to extreme weather.
- If we act now, we can still limit the impacts of climate change.

Source: www.un.org/en/climatechange/what-is-climate-change



Updated from Karl et al. 2009. www.globalchange.gov/browse/multimedia/global-temperature-and-carbon-dioxide

Abstract Risks Can Bring Real Impacts





Water & Sewer



Inspectional Services



Operational Change & Impacts



Public Works



Emergency
Communications

Operational Change & Impacts

ClimateForward

1

Carbon Net Negative

Reduce Somerville's contribution to climate change and work towards carbon net negative

2

Resilient

Prepare Somerville for the unavoidable impacts of climate change

3

Equitable

Fairly distribute climate action opportunities; work to alleviate unequal climate impacts

Climate Forward



**BUILDINGS
& ENERGY**



**TRANSPORTATION
& MOBILITY**



ENVIRONMENT



**COMMUNITY
HEALTH &
RESILIENCY**



LEADERSHIP

Carbon Net Negative

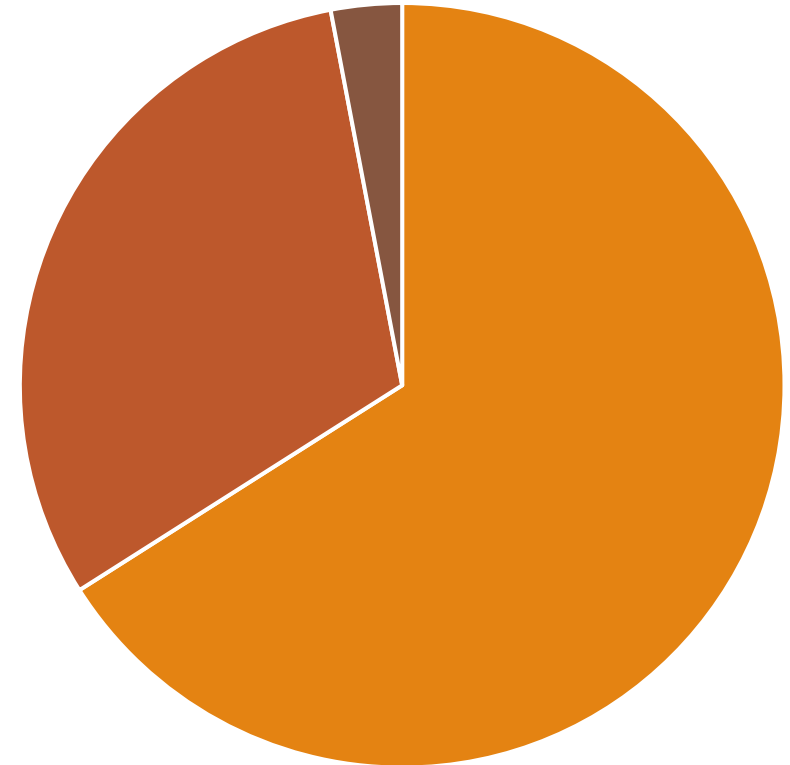
Resilient

Equitable

Somerville's Carbon Emissions

Somerville 2018 Greenhouse Gas Inventory

- 63% from buildings
- 33% from transportation
- 4% from waste



■ Buildings ■ Transportation ■ Waste



Lowering Building Carbon Emissions

City Buildings

- Reducing energy use
- Adding solar arrays
- Shifting from gas and oil to electric
- City signed an agreement to purchase over 30% of municipal electricity from a local solar farm.
- Added Building Systems Manager position added to manage weather.

Private Homes & Property

- Community Choice Electricity Program. You can sign up any time!
- Home energy saving programs
- 22 properties are developing Phius (net zero passive house) units delivering more than 760 units including more than 161 affordable units.
- New position created to grow Somerville's residential building decarbonization efforts.

Construction/Zoning

- One of the first four communities in MA to adopt and enact the Specialized Energy Code.
- Somerville Green Score established for high-performance landscapes.
- 50 certifiable LEED Gold and Platinum buildings are in development.



Equitable Low-Carbon Mobility

**Public Transit
Growth**

**Bicycle
Network
Expansion**

**Pedestrian
Improvements**

**Safe Routes to
School**

**Electric
Vehicle
Charging**

Vision Zero



GLX Grand Opening Photo: MBTA



Environment & Infrastructure

Stormwater
Management

Expanded Tree
Canopy
& Green Space

Biodiversity
Preservation

Green
Infrastructure

Reduced
Consumption
and Waste

Coastal
Flooding
Mitigation



Simplified pollinator plant palette,
planted in large masses



Reducing Flood Impacts Improving Water Quality

Targeted Drainage Projects

- Washington Street Bridge
- Cedar Street relief drain
- Somerville Bike Path drainage
- New Mystic Outfall
- Morrison Ave. Tank

Major Sewer System Upgrades

- Somerville Avenue
- Poplar Street Pump
- CSO Combined Sewer Overflow Sewer Separation Plan
- Spring Hill Sewer Separation

Coastal Flooding Mitigation

- \$23M raised to start
- \$150M target
- Draw 7 Park redesign with substantive resiliency features
- Dam Raising
- Island End River protections

High Exposure Areas

2070 100-year Storm Event



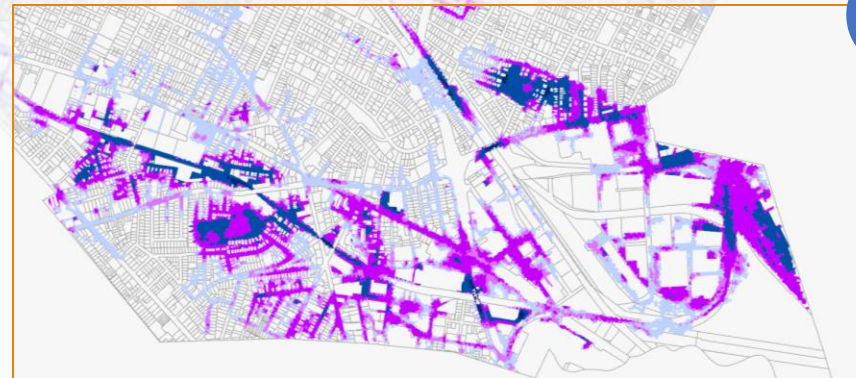
1

Assembly Square



2

Union Square



3

Davis Square



City of Boston, City of Cambridge, Esri, HERE, Garmin, SafeGraph, GeoTechnologies, Inc, METI/NASA, USGS, EPA, NPS, US Census Bureau, USDA

somer villema.gov/ose

Resilient Mystic Collaborative Takes on Coastal Flooding

Amelia Earhart Dam and Draw Seven Park

The Amelia
Earhart Dam

Draw 7 Park

The Island
End River



Photo: Via MyWRA by David Mussina



Community Health & Resiliency

- Resiliency programs
- Warming and Cooling centers
- Educational and Preparedness Outreach
- Climate Ambassadors
- Somerville Youth Climate Crew
- SustainaVille Week
- Emergency Displacement Fund
- Air conditioner and fan distribution



Somerville Young Tree Training Program



Leadership



**City Government
Leading by Example**



**Regional
Collaboration**



**State Advocacy for
Carbon Neutrality**

You're invited!

Moving Somerville ClimateForward

Updating the Climate Forward Plan



Scan to RSVP!

October 11, 2023

Doors open at 6:30 p.m.

Event from 7 - 8:30 p.m.

Refreshments available



Arts at the Armory

**191 Highland Ave
Somerville, MA**

**Mayor
Katjana
Ballantyne**
Featured Speaker



Help Somerville Go *Climate Forward*

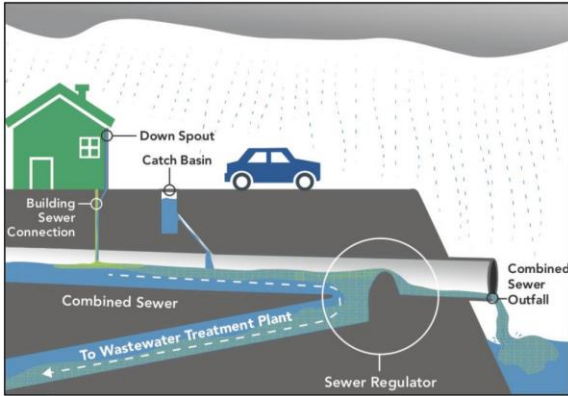
- Visit [**somerillema.gov/climateforward2023**](https://somerillema.gov/climateforward2023)
- Take the Community Survey
- Join a focus group
- Share info with friends & family
- Follow **@green_somerville** on Instagram and Facebook
- Visit [**somerillema.gov/sustainaville**](https://somerillema.gov/sustainaville) for more tips and info



Engineering Update

BRIAN POSTLEWAITE, DIRECTOR OF ENGINEERING

Engineering Update



Combined Sewer Overflow Planning

Update Meeting #3 November 15, 6pm

<https://voice.somervillema.gov/joint-cso-planning>



Adopt-a-Drain Program

Help keep the waterways
clean and your neighborhood dry.

somervillema.gov/stormwater



Central Broadway Water Update

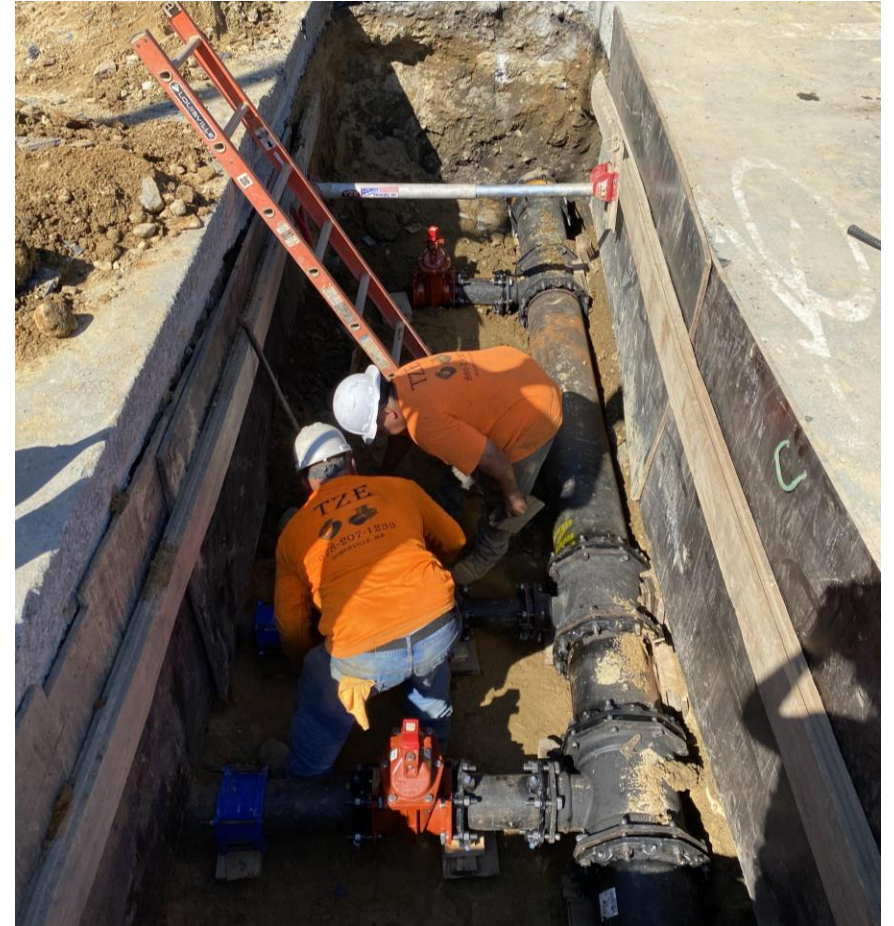
Project Update

Phase 1a, Central to Main/Edgar: Complete

Bypass Removal: End of October

Phase 1b/c & 2: Spring – Fall 2024

Permanent Pavement Restoration: Fall 2024



Construction & Accessibility Resources



Citywide ADA Transition Plan

Get involved with updating our citywide plan

<https://www.somervillema.gov/accessibility>



Citywide Construction Updates

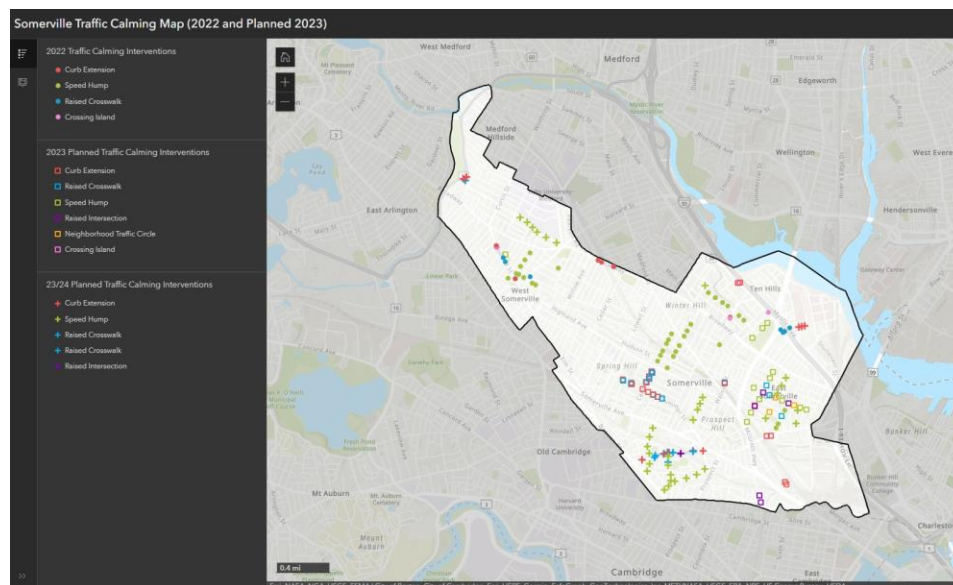
Keep up to date on construction throughout the City

<https://www.somervillema.gov/construction>



Additional Mobility Resources

Interactive Map of Traffic Calming Sites



View online

bit.ly/3NgqPz5



Newsletter Sign Up & Archive

City of Somerville
Office of Strategic Planning and Community Development (OSPCD)

September 2023 Mobility Division Update

Here is your September 2023 Mobility Division update:

1. Join us for the [Second Tufts Street Reconstruction Community Meeting](#).
2. Learn about the [Glen Street and Otis Street Quick-Build Neighborhoods](#).
3. Join us for the [First West Broadway Reconstruction Community Meeting](#).
4. Volunteer to help with Annual [Bicycle](#) and [Pedestrian](#) Counts.

bit.ly/3LzZk2x

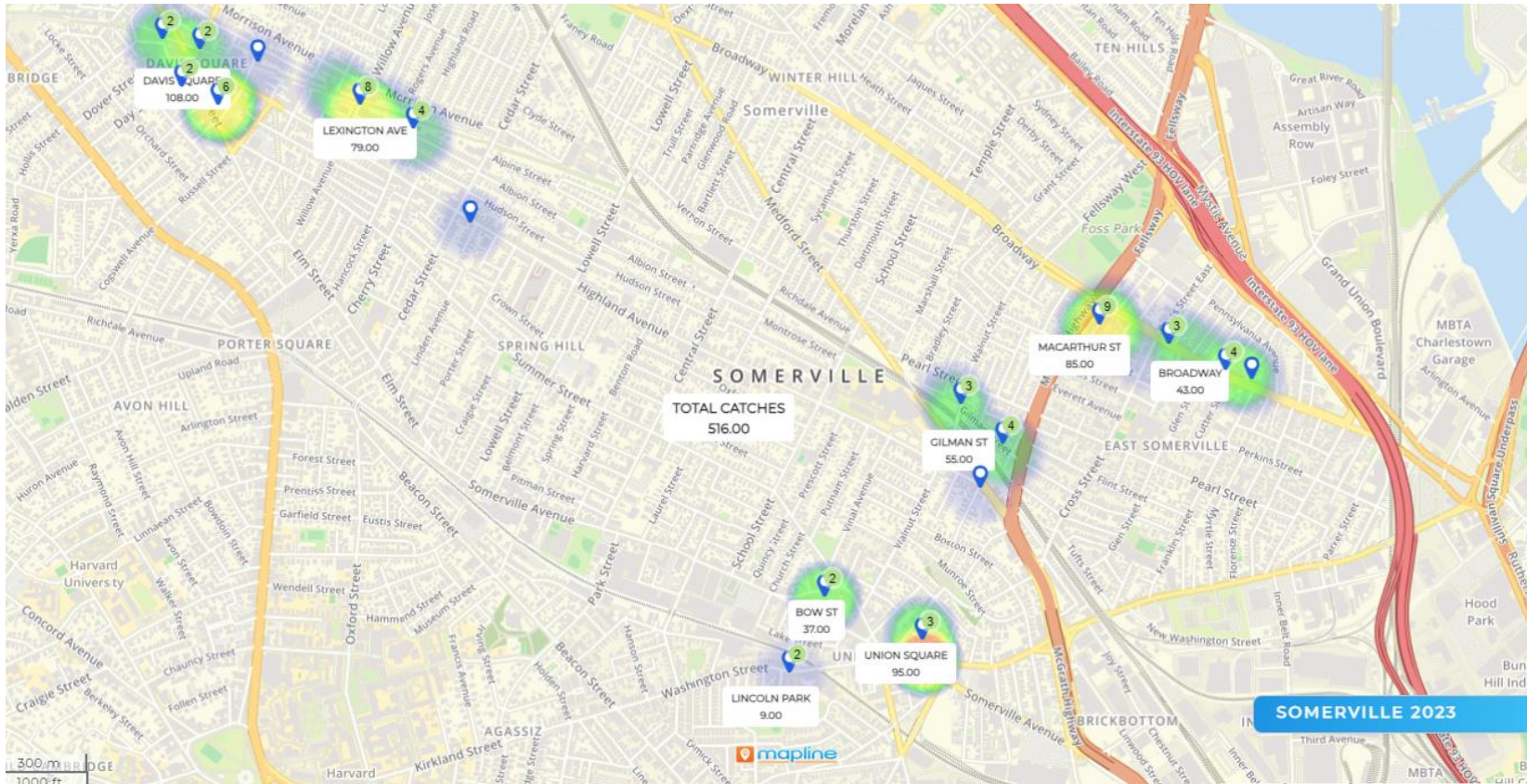


Inspectional Services: Rodent Control

COLIN ZEIGLER, ENVIRONMENTAL HEALTH MANAGER



SMART Update

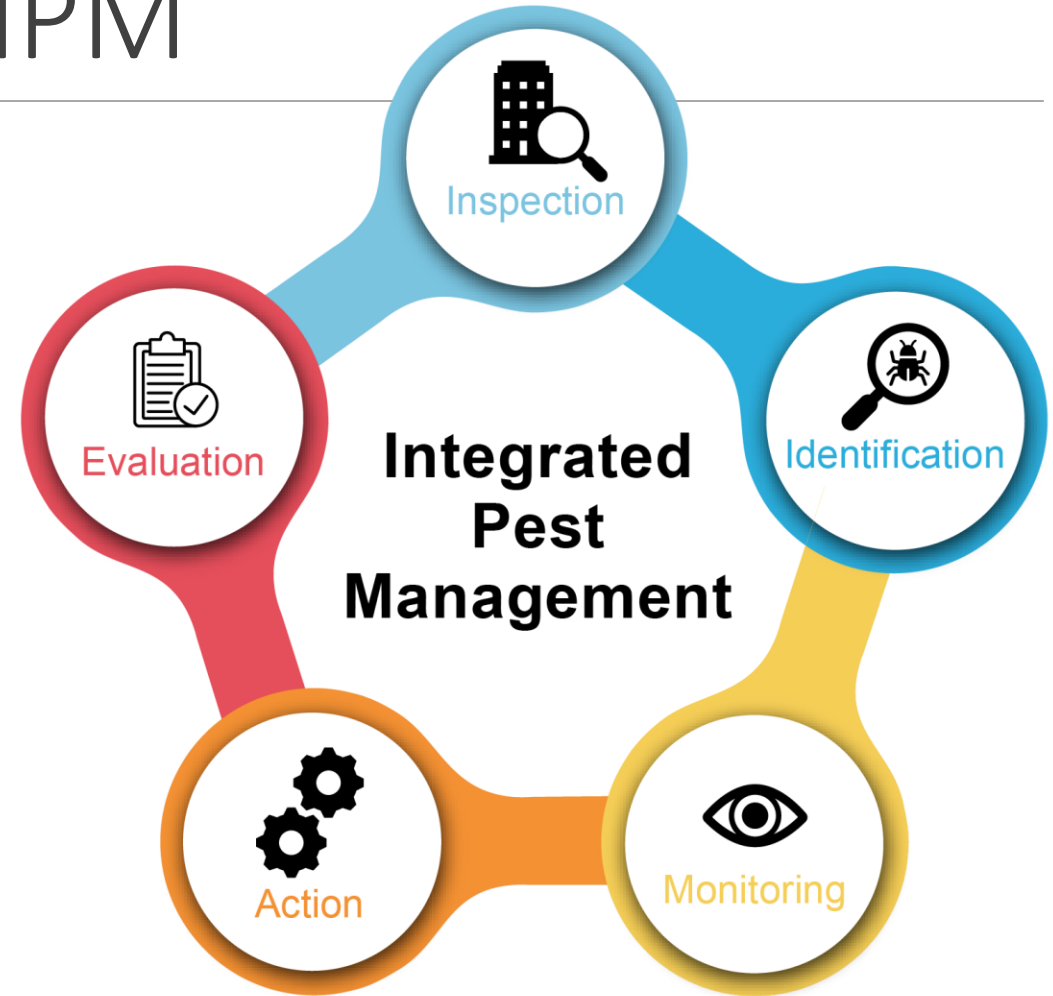


- In 2023 we have recorded 516 captures. A sharp reduction in comparison to 2022 where we had 1078.
- We can see reductions in activity in both residential and commercial spaces.
- This can be attributed, in part, to the communication with residents and businesses to reduce rodent-causing vectors.

Enhancing the City's IPM

In 2019 the City implemented an Integrated Pest Management Plan to coordinate rodent control measures at the Public, Residential, and Commercial levels to improve Enforcement, Education, and Abatement policies and procedures.

Now it is time to enhance it!



Want to help reduce rodent activity near your home?

The City actively works to reduce rodent activity in our community. When residents help near their homes, together we can make an even bigger difference.

Here's what you can do!

Remove Food Sources

1. Keep trash and recycling carts closed and tightly sealed.
2. Patch any holes in carts, and call 311 to replace when damaged.
3. Compost properly: No meat, dairy, grease, or strong-smelling items.
4. Report ANY trash overflows to 311.
5. Do not feed wildlife. Pick up vegetable garden waste.



overflowing-recycling-bins.jpg

Prevent Water Supply

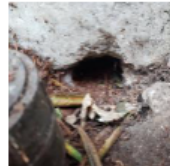
1. Remove sources of standing water: dog bowls, birdbaths, or plant saucers.
2. Inspect and repair any leaks from faucets, hoses, rain catchers, or AC units.
3. Remove standing water like puddles by draining or sweeping away.
4. Clear away or empty containers that gather rainwater: buckets, toys, or other items.
5. Empty watering cans when not using.



water-spigot.jpg

Reduce Shelter Access

1. Landscape and declutter regularly.
2. Remove low-lying vegetation, and trim all plants away from structures.
3. Inspect the outside of your home for potential rodent entry points. Rats can fit through holes as small as ½ inch wide.
4. Check around pipes, vents, door sweeps, windows, or cable entry points.
5. Fill entry points with steel wool, rodent-proof spray foam, steel mesh, or hardware cloth.



rodent-burrow-hole.jpg

Report all rodent issues and sightings to 311 (617-666-3311) somervillema.gov/311

Learn more at somervillema.gov/RodentControl

New Web Resource

- Contains information on the steps you can take on your property to reduce rodent activity.
- Translated into six languages
- Share with your neighbors and friends!

www.somervillema.gov/rodentsaway

Somerville Police Department

CHIEF CHARLES FEMINO

CAPTAIN JAMES DONOVAN



Somerville Crime

Citywide

- Citywide Part I Crime **increased 8%** over 1 year
 - Increases: Burglary, MV theft and car breaks
 - Decreases: Robbery and larceny

SPD Action

- Area cars deployed based on patterns, hotspots, repeat incidents and feedback from the community.
- Increase residents' awareness of crime prevention methods
- Prioritize suspect identification in violent crimes
- SPD engages with at-risk youth in the community (Jr. Police Academy)

Ward 4

- Part I crime in Ward 6 has **increased 2%** over 1 year
 - Increases: Robbery, Residential Burglary and MV Theft
 - Decreases: Aggravated Assault and Larceny

2023 Junior Police Academy

SPD, in collaboration with Parks and Recreations Department, held a Junior Police Academy August 7 – 11, 2023. There were 22 graduates between the ages of 10 to 14.



Crime Prevention

MV Theft

- Do not leave keys or key fobs inside your vehicle or leave your vehicle running unattended.
- Do not leave valuables in plain sight, or in your car at all.
- Additional security measures, such as vehicle tracking system/ GPS, vehicle security systems, and a steering wheel/column lock also can be effective deterrents.
- Some Kia/Hyundai vehicles are eligible for a free anti-theft software update. Contact Hyundai (toll-free at 800-633-5151) or Kia (toll-free at 800-333-4542)



Burglary

- Always keep all doors and windows locked (including patio, basement, garage, and shed doors). In the past 2 months, 70% of residential breaks required no force.
- Register your electronic devices. High-value electronics, such as laptops, frequently have options for registration & tracking.
- Have adequate exterior lighting. A motion-sensitive light is recommended for backyards. Light is one of the best crime deterrents.



Traffic Enforcement

- Traffic Citations are concentrated on high volume streets and intersections.
- Community feedback is considered by the Traffic Bureau in determining enforcement areas.
- Municipal Road Safety Grant (April – September 15th)
 - Areas of enforcement:
 - Distracted Driving
 - Click it or Ticket
 - Speed
 - Impaired Driving
 - Pedestrian and Cyclist Safety
- 1,681 citations were issued in total (1,340 motorized vehicles; 341 bicyclists). 96% were written warnings.
- 3 additional speed signs will be placed in areas with a high rate of infractions.

SUPPPORT FOR:

Substance
Misuse

Mental Health

Domestic
Violence

Sexual Assault

	Contact Name	Service	Contact Info.
Substance Misuse	MA Substance Use Hotline	Treatment program info	800-321-5050
	Cambridge Health Alliance	Walk-ins Tue. 11:30; MA Health accepted	617-591-6051
	Baycove First Step Outreach - Wet shelter & Community Outreach Van	Assist in accessing detox.	617-661-0600
	Riverside Community Care	Outpatient; MA Health accepted	617-623-3278
	North Charles	Maintenance therapy; MA Health only	617-661-5700
	BayView	Counseling, medication assisted treatment	(866) 934-7450
	Learn 2 Cope https://learn2cope.org/events/month/?tribe_city%5B0%5D	Family support; every other Mon. 7 PM	1575 Cambridge St, CAM
	Family Anonymous	Family support; Tue. 7 PM	121 Washington St, MEF
	SPD, COHR Unit Therapeutic Supports, Jail Diversion	Theraputic Supports; Jail Diversion	617-625-6600 ext. 7281
Mental Health	Cambridge Health Alliance	Community Behavioral Health Center 7days/week	833-222-2030
	MCI North Suffolk	24/7 Psychiatric emergency services	888-309-1989
	Riverside - Child Guidance Center	Juvenile / family services	617-354-2275
	Neighborhood Counseling & Community Services	Counseling, skill & strength-based strategies	781-600-6074
	SPD, COHR Unit Therapeutic Supports, Jail Diversion	Theraputic supports; Jail diversion	617-625-6600 ext. 7345
	Somerville Health Department	Supportive services	www.somervillema.gov/support
	Psychology Today provider finder	Find a provider	www.psychologytoday.org
	INTERFACE Referral Service	Find a provider; Monday- Friday 9-5pm	888-244-6843 https://interface.williamjames.edu/
Domestic Violence	RESPOND	Shelter, crisis hotline, services, education	Hotline: 617-623-5900, Services: 617-440-7267
	Maureen DiPaolo, SPD Family Services	Victim Witness Advocacy	617-625-1600 x 7279
Sexual Assault	BARCC (Boston Area Rape Crisis Center)	Free legal consultation, counseling, and education for survivors and family members of survivors	Hotline: 800-841-8371 https://barcc.org
Additional	De Novo	Free civil legal assistance and psychological counseling specializing in work with immigrants and refugees, services based on income eligibility	617-661-1010 Denovo.org

Contact SPD (non-emergency)

To report a crime / file a police report:

- Call **617-625-1212** (non-emergency)

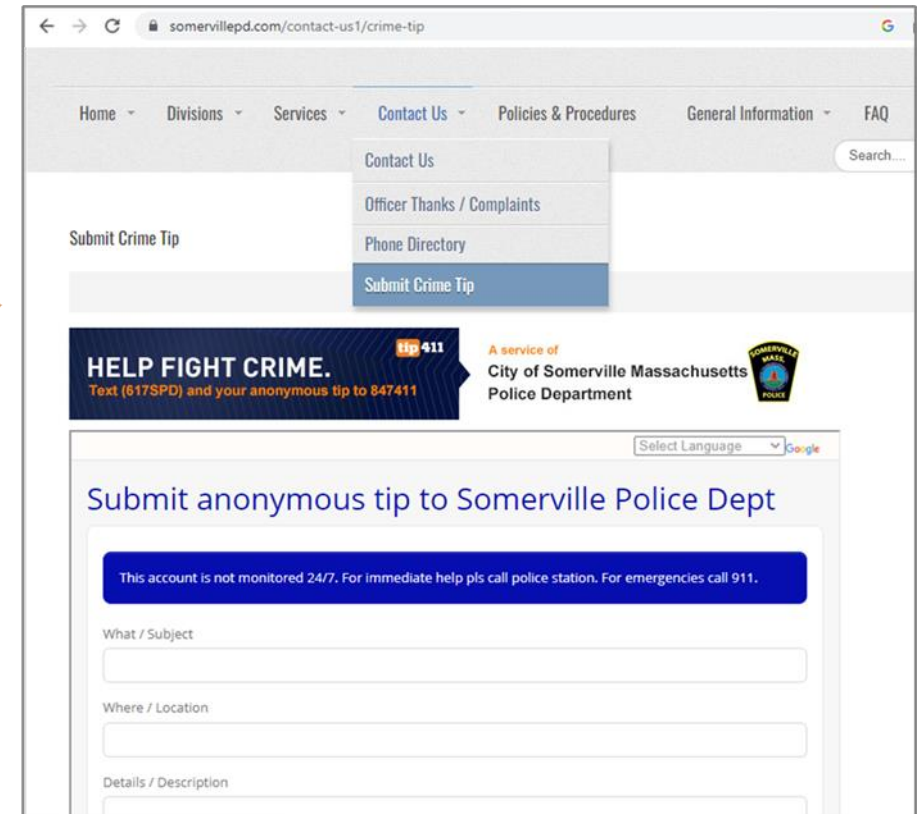
Submit an anonymous crime tip:

- <https://somerlevillepd.com/contact-us1/crime-tip>
- Note: This is for anonymous tips only and does not constitute a police report.

Questions or concerns:

- Police@police.Somerville.ma.us

In case of emergency call 911.



The screenshot shows the website somervillepd.com/contact-us1/crime-tip. The navigation menu includes Home, Divisions, Services, Contact Us, Policies & Procedures, General Information, and FAQ. The 'Contact Us' dropdown menu is open, showing options: Contact Us, Officer Thanks / Complaints, Phone Directory, and Submit Crime Tip. The 'Submit Crime Tip' link is highlighted. Below the menu, there is a 'Submit Crime Tip' button. A banner for 'HELP FIGHT CRIME.' with 'Tip 411' and 'Text (617SPD) and your anonymous tip to 847411' is visible. The page title is 'Submit anonymous tip to Somerville Police Dept'. A disclaimer states: 'This account is not monitored 24/7. For immediate help pls call police station. For emergencies call 911.' The form fields are: 'What / Subject', 'Where / Location', and 'Details / Description'.

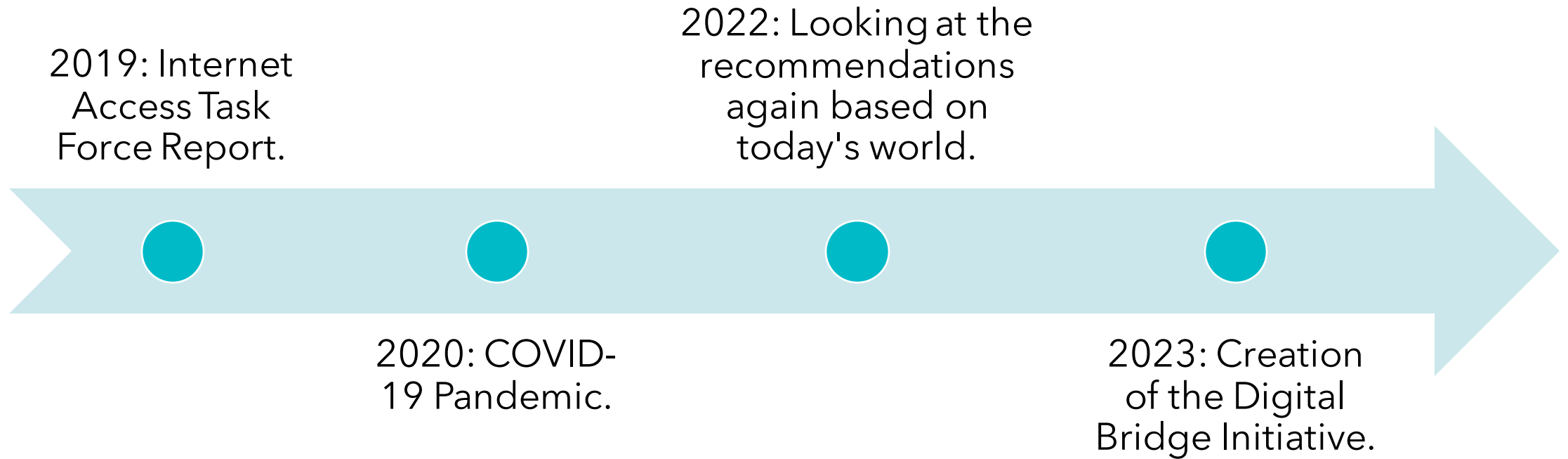
The Digital Bridge Initiative

BLAIR WONG, PROJECT SPECIALIST

LUIS QUIZHPE, STRATEGIC PLANNING & EQUITY MANAGER



Project Background



The Digital Divide

It is the gap between those who can afford and know how to use the internet and those who cannot.

People who experience the digital divide do not have the same opportunities in life.

It especially harms people of color, low-income households, people with disabilities, and older people.



Digital Equity

Digital equity means that **all people have the technical skills to use the internet.**

It will allow people to take part in society, democracy, and the economy.

It also means **acknowledging and removing the barriers that disadvantaged groups face.**

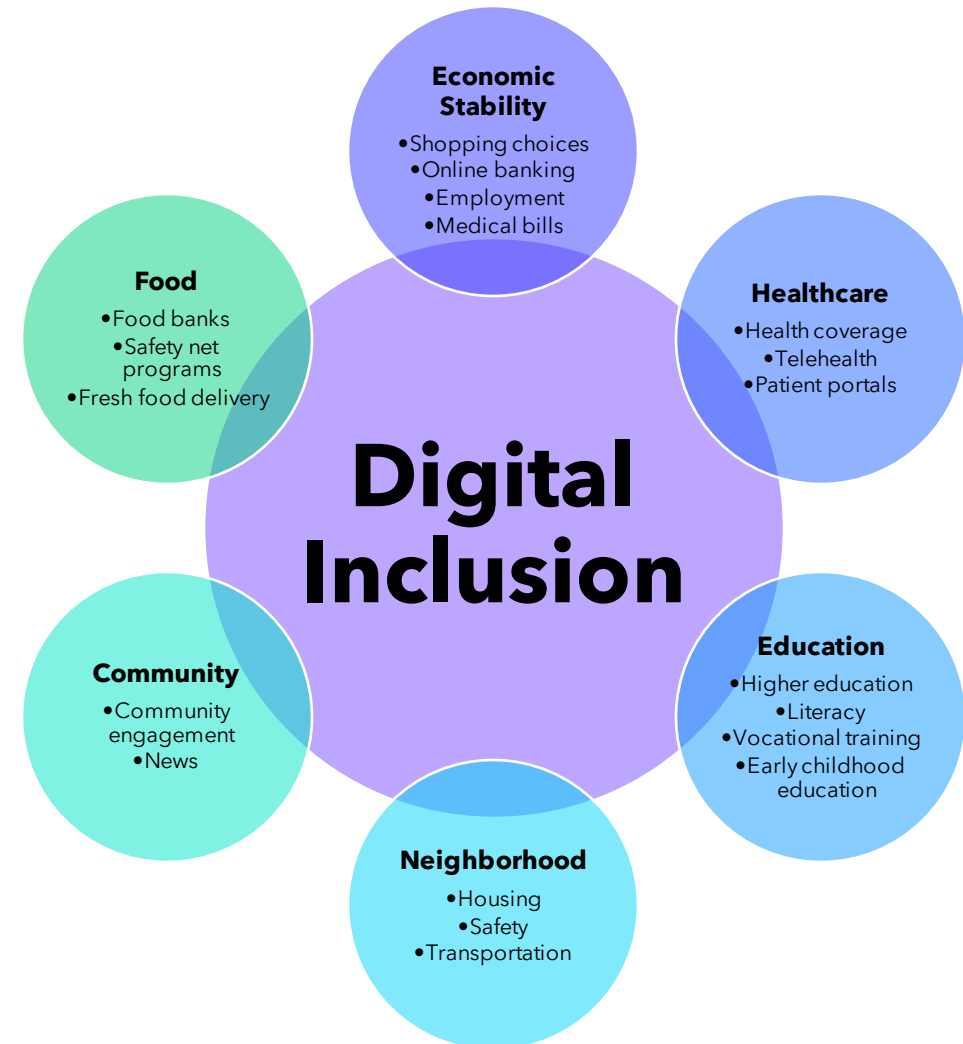


Digital Inclusion

Digital inclusion is **the work required to make sure that everyone has access to the internet.**

It is also **making sure that all people know how to use the internet.**

The **digital divide** is the issue.
Digital equity is the goal.
Digital inclusion is the work.



Our Vision

We want Somerville to be one of the first U.S. cities where everyone can use the internet with ease. We want to be a city that has invested in helping those who need it most. This means they can use the internet to chase their dreams, move up in life, and stay healthy.



We aim to:

Break Down Barriers:

We want to remove any obstacles that make it hard for people to do things online.

Make Internet Affordable: We want to make sure the internet isn't too expensive, and we want to keep it that way.

Connect Public Places:

We want public spaces such as schools, libraries, and parks to have reliable internet too.

Help Everyone Use Tech: We want to help people use technology in their everyday lives and for their future aspirations.

Our Goals

Connect Everyone

- We want to make sure that everyone in our community can get on the internet. Nobody should be left behind because they can't afford it.

Get the Right Tools

- We want to make sure that people have the right devices to use the internet, especially those who might not have them right now.

Teach Digital Skills

- We're going to work with different organizations to help people learn how to use the internet, making our community stronger and healthier.

If you'd like to learn more...

Visit

<https://bit.ly/SomervilleDBI>

Scan



Email

Blair Wong

Project Specialist
bwong@somervillema.gov

Luis Quizhpe

Strategic Planning & Equity Manager
lquizhpe@somervillema.gov

Jennifer Mancia

Workforce Development Senior
Planner
jdutra@somervillema.gov

Questions?

Email any remaining questions to cm@somervillema.gov