

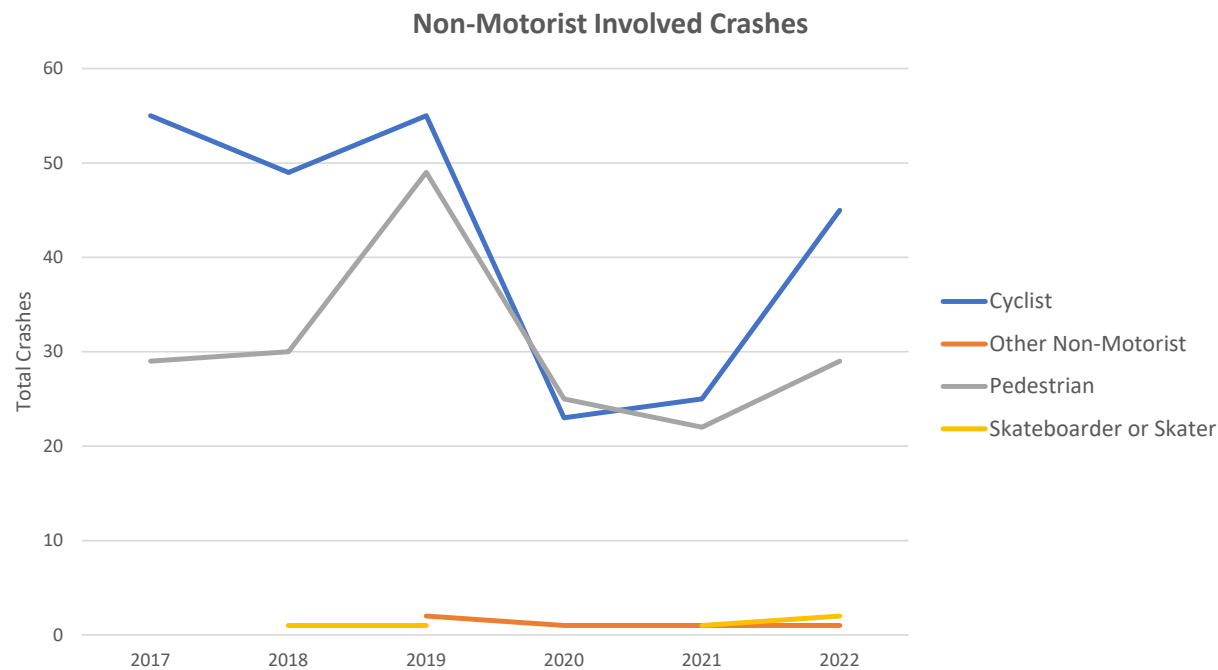
Traffic Safety Trends

Somerville Police Department



Crashes

Non-Motorist involved crashes increased in 2022 but still trend downwards long-term

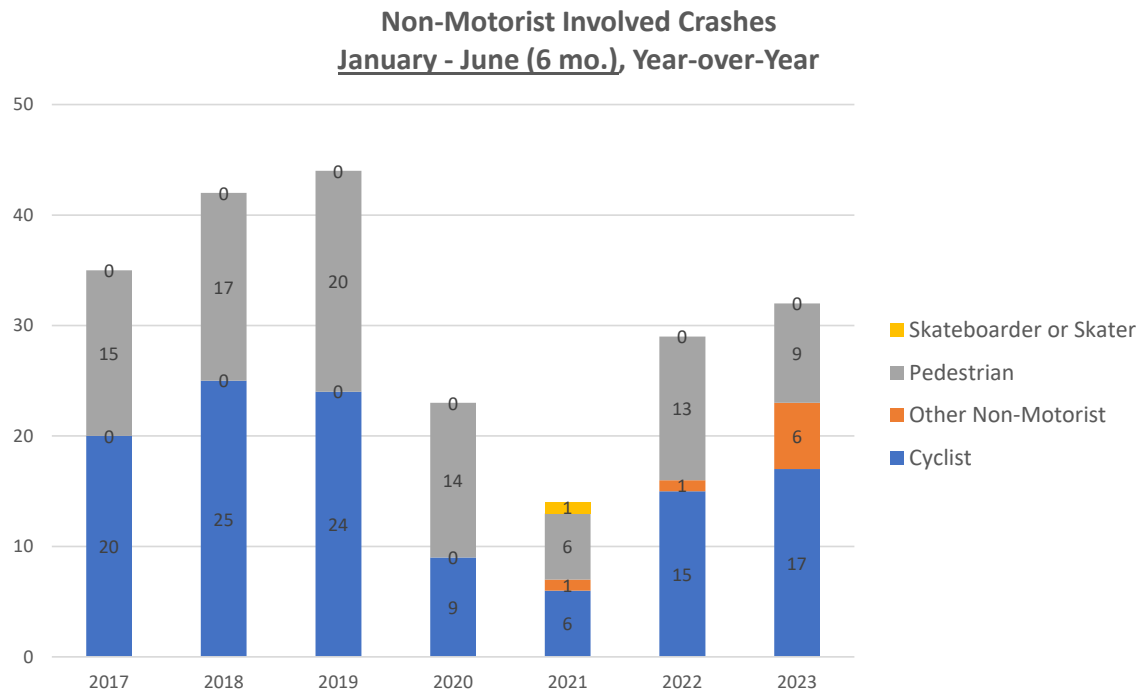


In 2023, there were 77 non-motorist crashes, an increase compared to 2020 and 2021. However, totals remain lower than 2017 – 2019.

Recent increases are seen in all non-motorist types, particularly cyclist and pedestrian.

“Other Non-Motorists” are primarily scooters.

The first 6 months of 2023 (year-over-year) mimic annual trends.

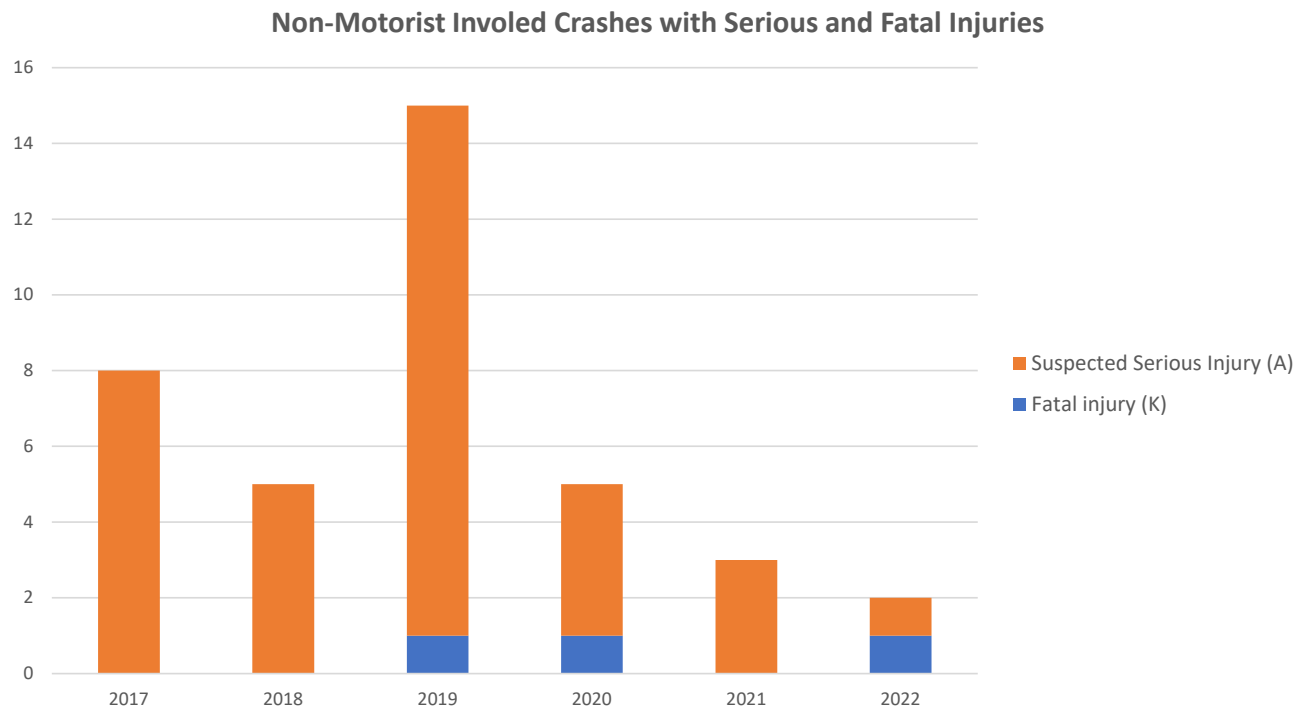


The first six months of 2023 exhibited the same trends when compared year-over-year.

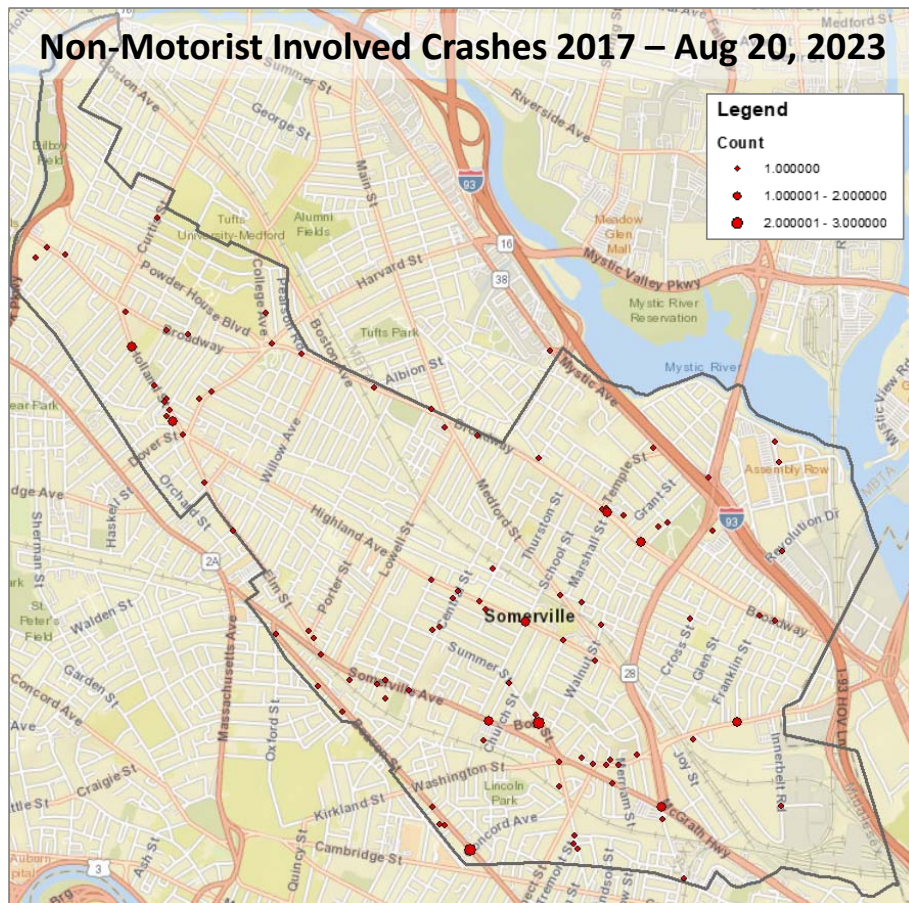
However, “Other Non-Motorists”, which almost entirely represents scooters, increased to six incidents.

Non-motorist serious injury incidents are trending downwards...

However, there have been three fatalities in the past five years.



Crashes in Somerville tend to be concentrated in specific high-volume areas

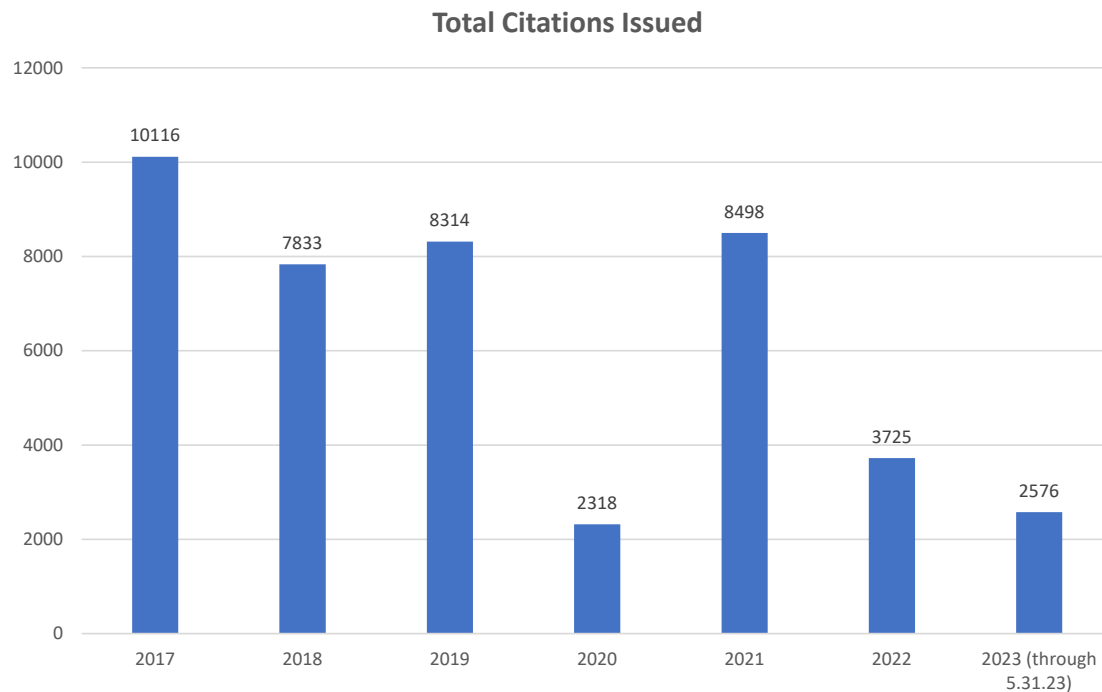


Areas of higher volume crashes:

- Somerville Ave Corridor
- Holland St north of Davis Square
- Highland Ave b/w McGrath Hwy & Lowell St
- Washington St b/w McGrath Hwy & Union Square
- Broadway between McGrath Hwy & Temple St

Traffic Citations

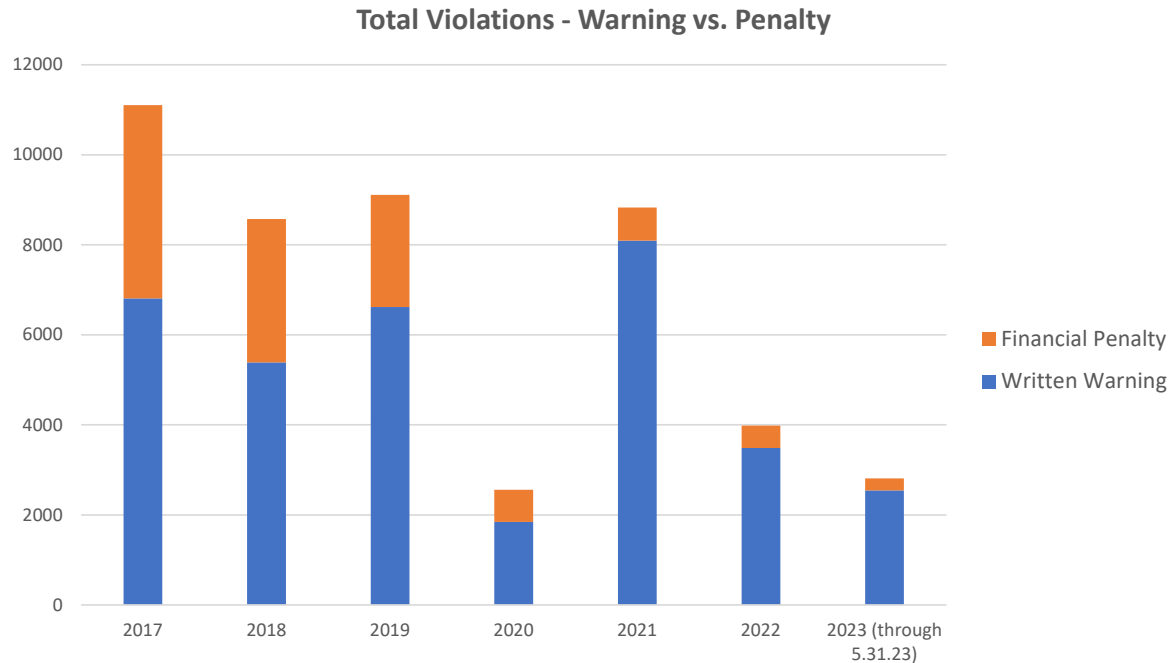
Total citations have fluctuated based on external factors



Citations plummeted during the height of the pandemic, rebounded with renewed efforts in 2021 and then dropped with staffing shortages.

- The top five violations in 2023 have been:
 - Stop/Yield, Fail to
 - No Inspection Sticker
 - Electronic Message Operator Send/Read (texting and driving)
 - Speeding in Violation Special Regulation
 - Improper Operation of Motor Vehicle
- In 2023, there have been increases in Crosswalk Violations, Texting and Driving, and Bike violations.

The majority of citations are written warnings



Each citation can include one or more violations. Each violation can be issued as a written warning or as a financial penalty.

In 2022, written warnings represented 88% of all citations.

Traffic Citations
tend to be
concentrated on
high-volume
streets

