



## February 2023 PTAC Meeting

# Agenda

---

- ❖ Mobility Annual Planning Process: 2022 Review and 2023 Projects (30 Minutes)

- ❖ Presentation by Mobility team followed by Committee discussion

- ❖ GLX Stations: Pedestrian Safety & Accessibility (30 Minutes)

- ❖ Presentation by Mobility team followed by Committee discussion



# Mobility & Safety in Somerville: 2022 Key Performance Indicators



**MAYOR KATJANA BALLANTYNE**  
**OFFICE OF STRATEGIC PLANNING &  
COMMUNITY DEVELOPMENT**

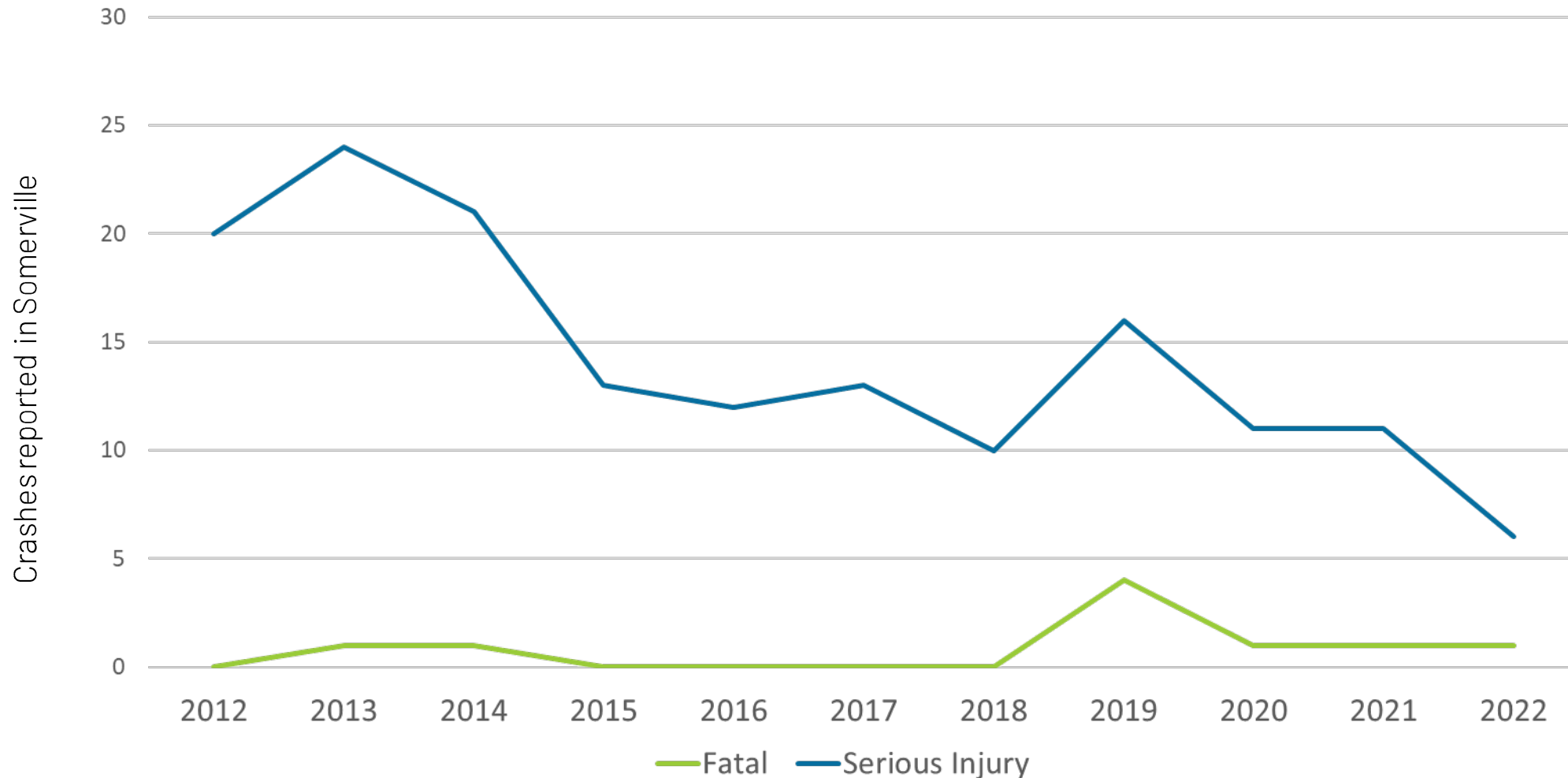
[Transportation@somervillema.gov](mailto:Transportation@somervillema.gov)  
[www.somervillema.gov/visionzero](http://www.somervillema.gov/visionzero)

# SAFETY TRENDS



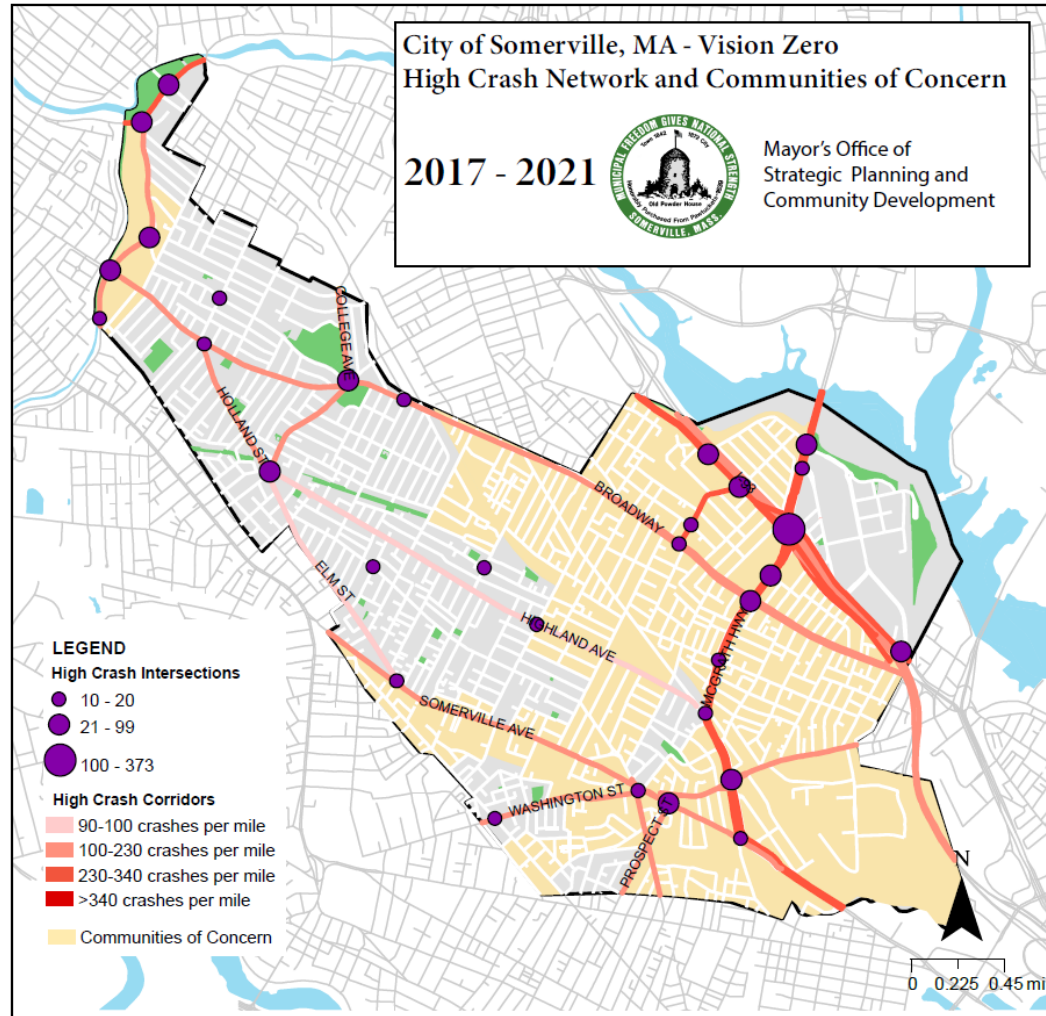
# Severe crashes have been trending downward over the past decade but Somerville has experienced fatal crashes for four consecutive years

Source: MassDOT Impact Crash Portal, 01/30/2023



# Crashes in Somerville tend to be concentrated on few streets including high-volume local streets and multi-lane state highways

Source: MassDOT Impact Crash Portal



## State Roads (on High Crash Network)

Route 28 (McGrath)  
Route 38 (Mystic)  
Route 16 (Alewife Brook)  
I-93

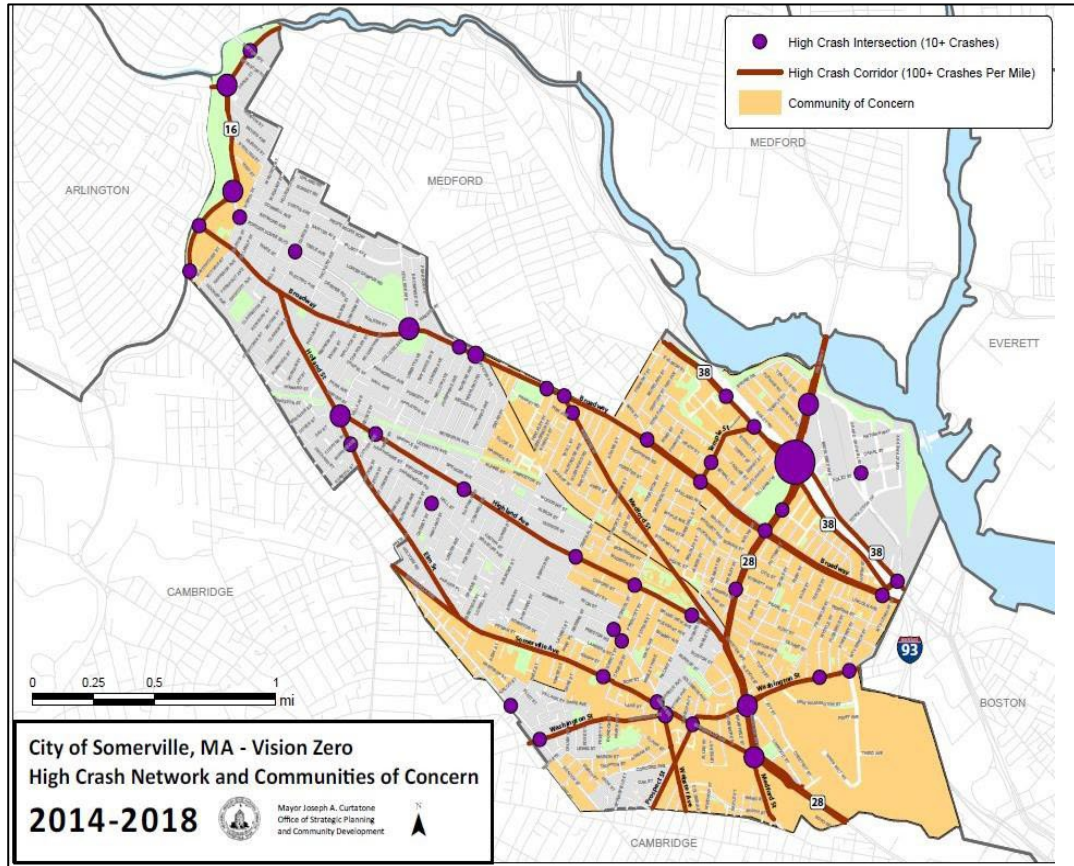
## City Streets (on High Crash Network)

Broadway  
College  
Holland  
Elm  
Highland  
Somerville  
Washington  
Prospect  
Webster  
Temple



# Crashes in Somerville have dropped 12% compared with the 2014-2018 "High Crash Map"

Source: MassDOT Impact Crash Portal

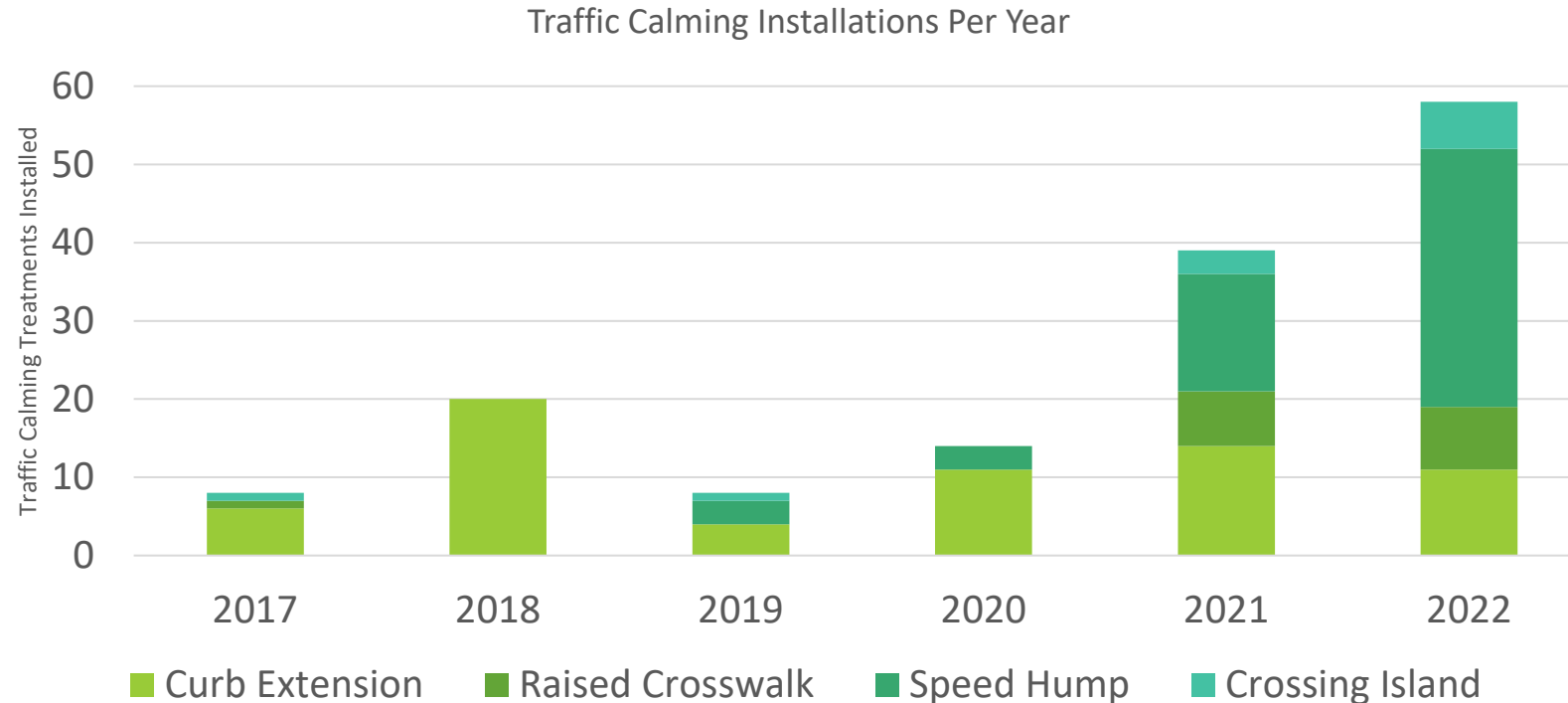


- 12% drop in reported crashes
- 21% drop in injury related crashes
- 15% drop in crashes involving non-motorists
- 14 less intersections qualify as High Crash

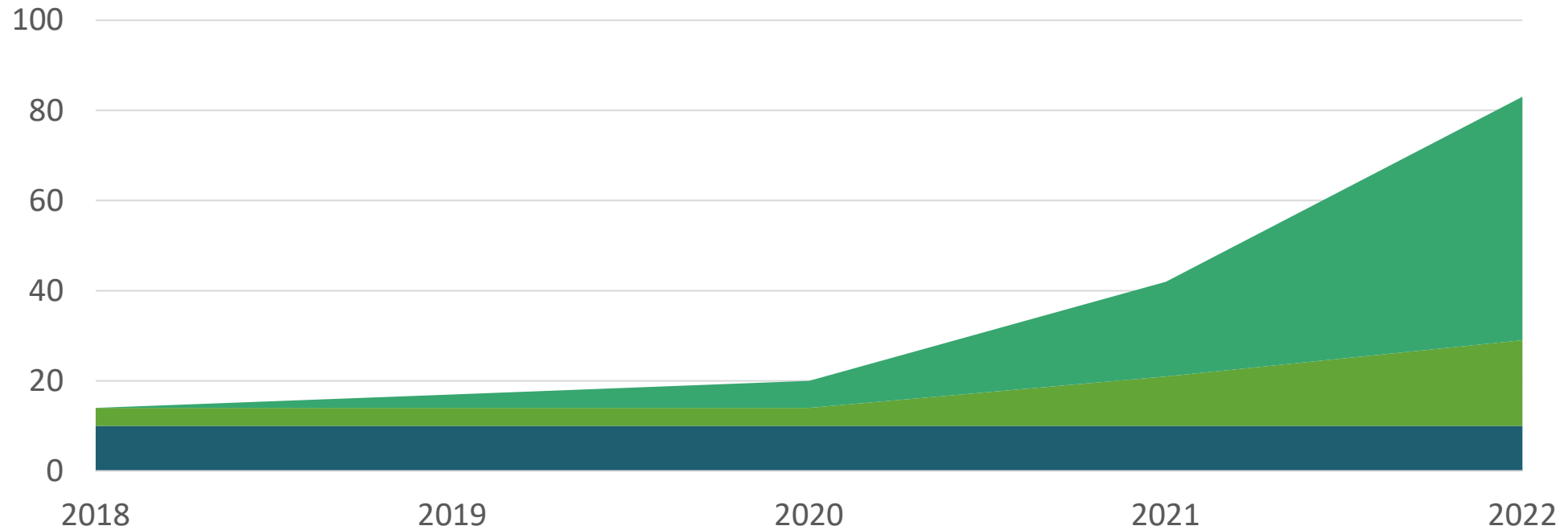
# **PROJECT AND PROGRAM TRENDS**



# Somerville has transformed our traffic calming program in order to save lives and respond to resident feedback



# The total number of raised traffic calming interventions in Somerville has increased 6-fold since 2018



■ Raised Intersections

■ Raised Crosswalks

■ Speed Humps



# Somerville's speed hump program is improving safety; pre/post installation data show major reductions in speeding behavior

Source: Automatic traffic recorder data

Central at Willoughby



% of vehicles > 25mph

Pre **39%**  
Post **9%**

Sycamore at Jerome



% of vehicles > 25mph

Pre **50%**  
Post **4%**

Lowell at Alpine



% of vehicles > 25mph

Pre **42%**  
Post **7%**

Morrison at Pearson



% of vehicles > 25mph

Pre **33%**  
Post **6%**

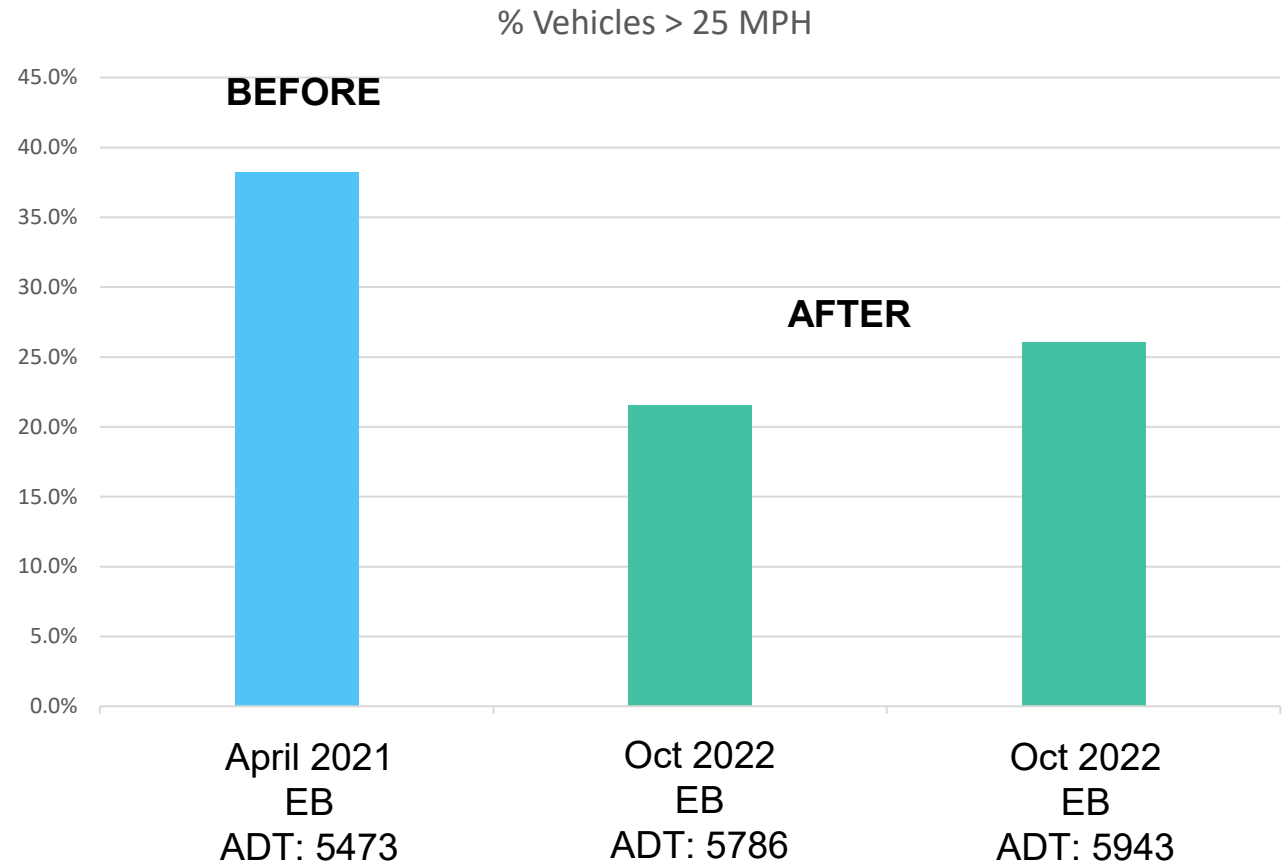


# Curb extensions and crossing islands are reducing vehicle speeds and improving safety for people crossing the street

Source: Automatic traffic recorder data



Location: Broadway at Winchester





# Somerville's new "intersection daylighting" program began in 2022, improving visibility at 32 intersections totaling 51 crosswalks



Location: Broadway at Belknap



Location: Broadway at Chandler



# Somerville is modifying traffic signals to prioritize pedestrians, in 2022 we increased crossing time at 24 intersections

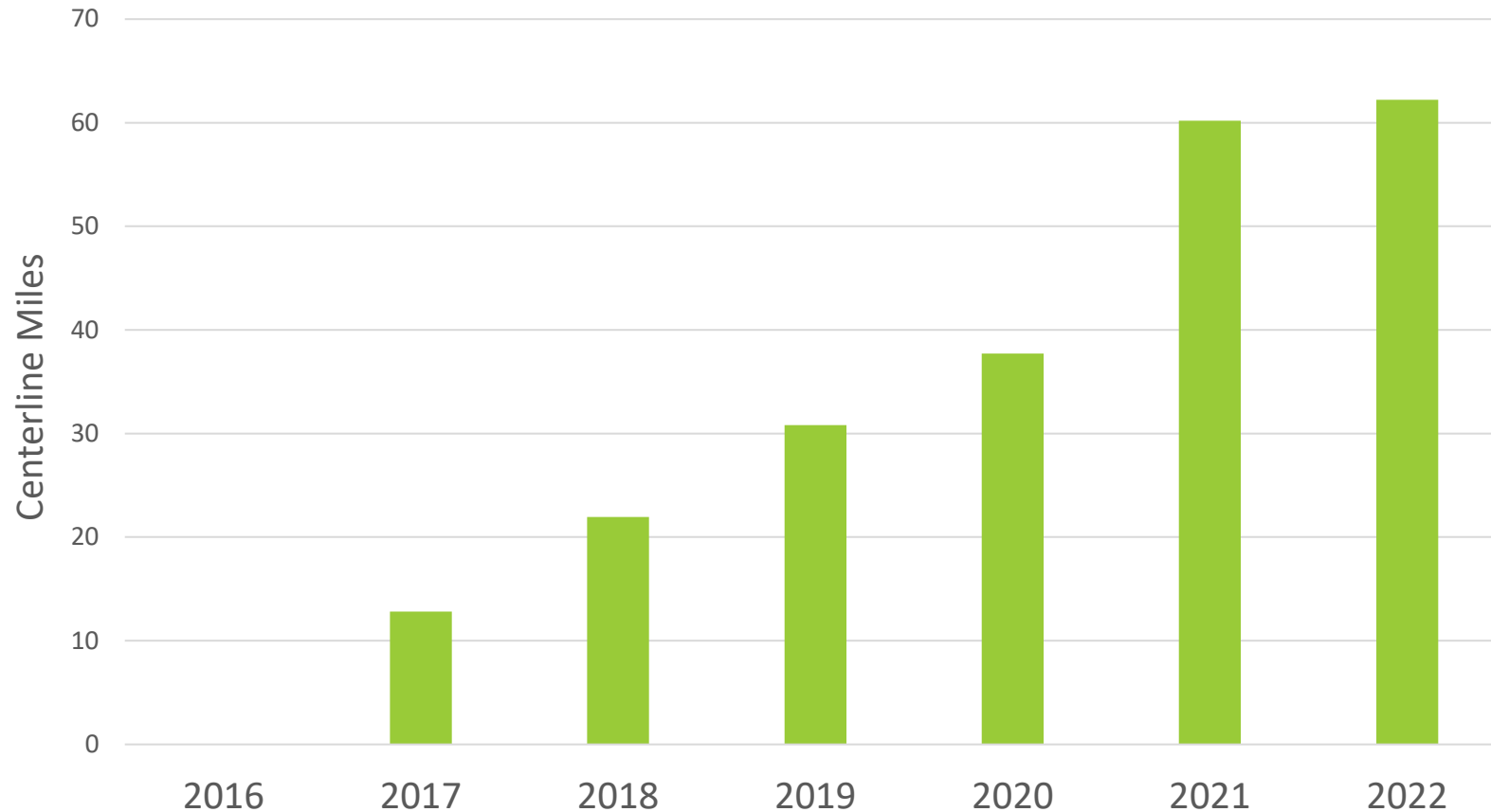


Location: Broadway at Willow

# Somerville has systematically reduced posted speed limits citywide; 20 mph is now the default speed limit for residential neighborhoods

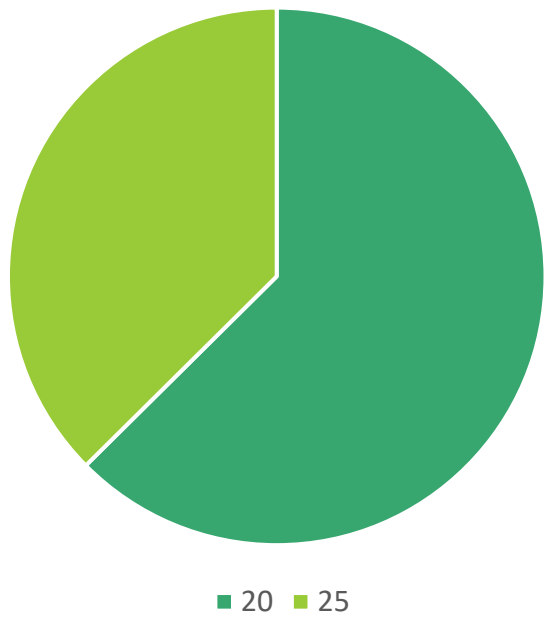
## Expansion of 20mph "Safety Zone" speed limits

Source: Somerville Traffic Regulations and MassDOT Centerline Database



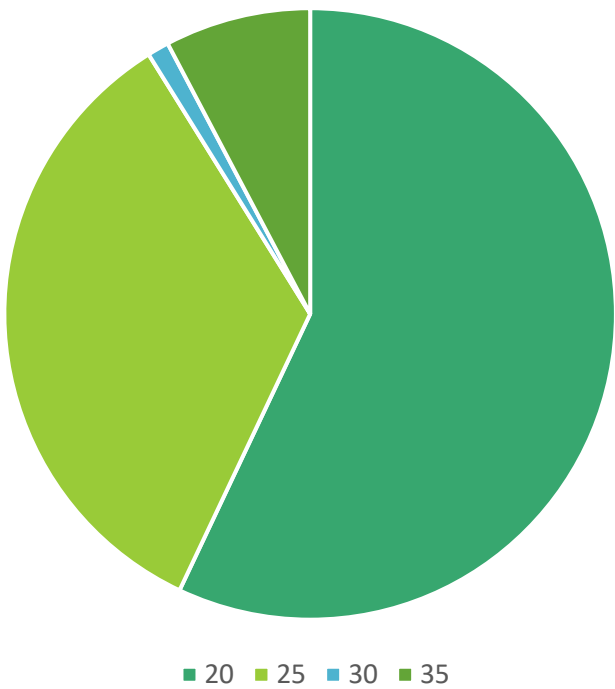
# The majority of streets in Somerville use 20mph speed limits; 25mph is used on some arterial streets and state-owned roads

Road Miles Owned by Somerville by Speed Limit



Total Miles: 100

Road Miles in Somerville by Speed Limit



Total Miles: 109

*Includes state-owned roads such as Route 16, Route 28 and Route 38 (but not Interstate 93)*



# Mobility 2023 Workplan

---

# Workplan Process

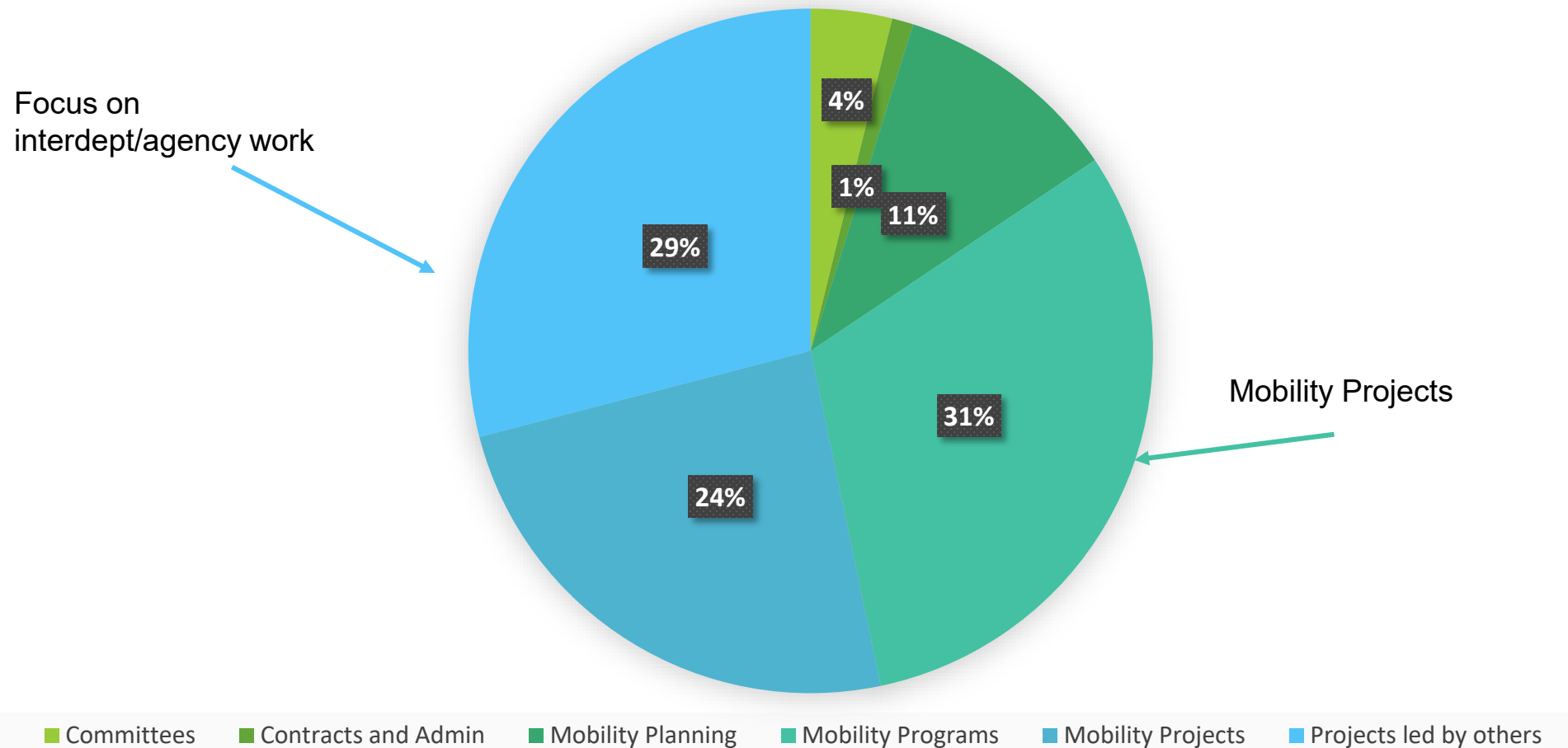
---

- Review 2022 Workplan
  - Where did we do well, where did we fall short?
  - For each item: Continuing, complete, on-hold
- New Proposals
- Individual priorities
- Resourcing Review
  - Forecast 12,000 staff hours spread across each season
    - Program 75% of capacity
    - Leave 25% for admin, coordination meetings, and unexpected work
  - Forecast other resource needs for budget planning
- **118 active projects**

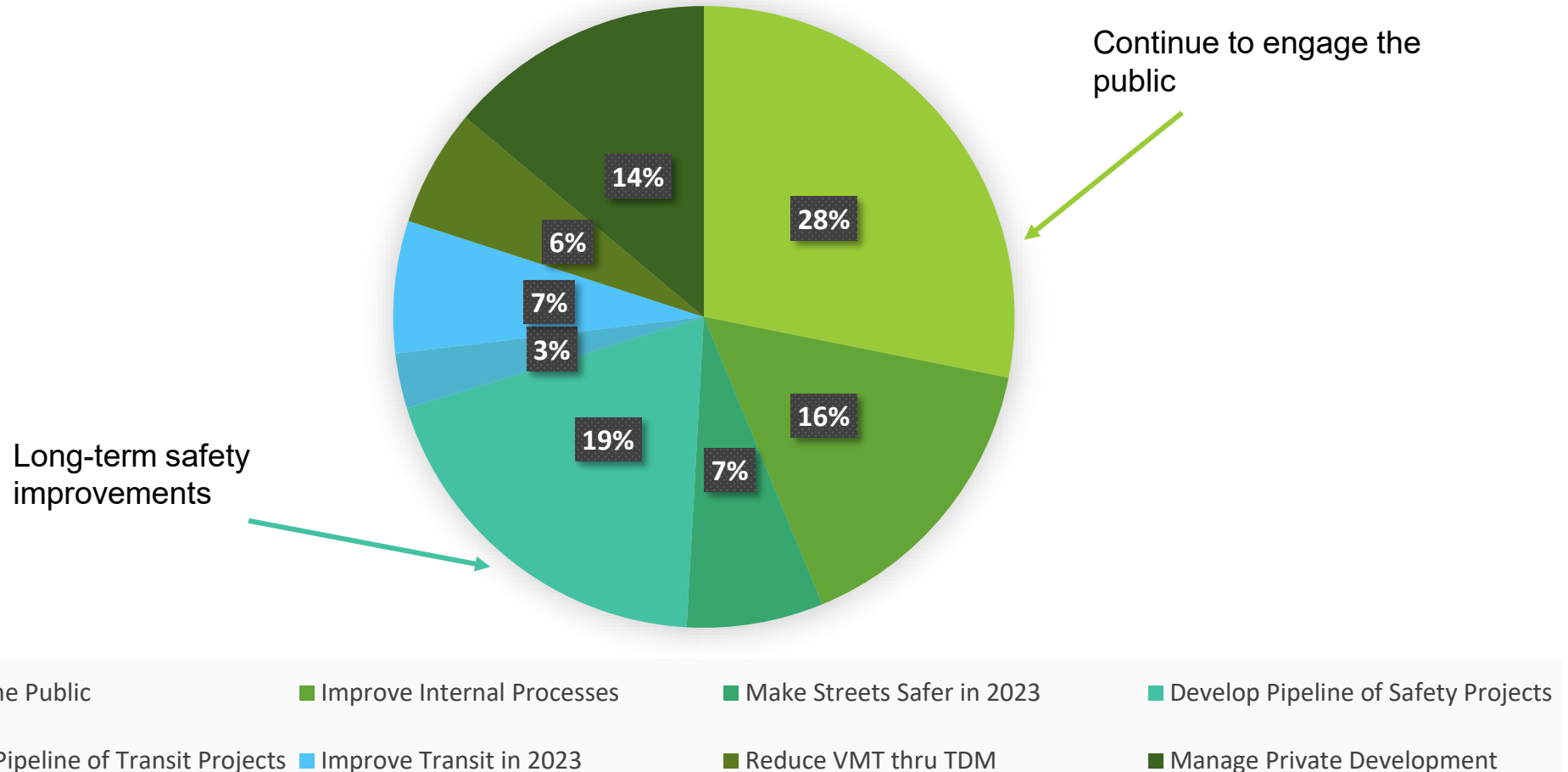


# Staff Hours by Category

---



# Staff Hours by Goal (Draft)





# Highlighted Projects

---

## Mobility Engagement Strategic Plan and SOPs

### Construction-based Safety Projects

- Streets Package- Western Washington and Pearl +6
- Intersections: Mystic @ Shore, Somerville Ave, Mossland , Elm
- Speed humps

### Quick Build Safety Projects

- Grand Union, Middlesex Ave, Wellington Bridge
- West Broadway Quick Build and Data Collection
- Neighborways Implementation

### Vision Zero programs

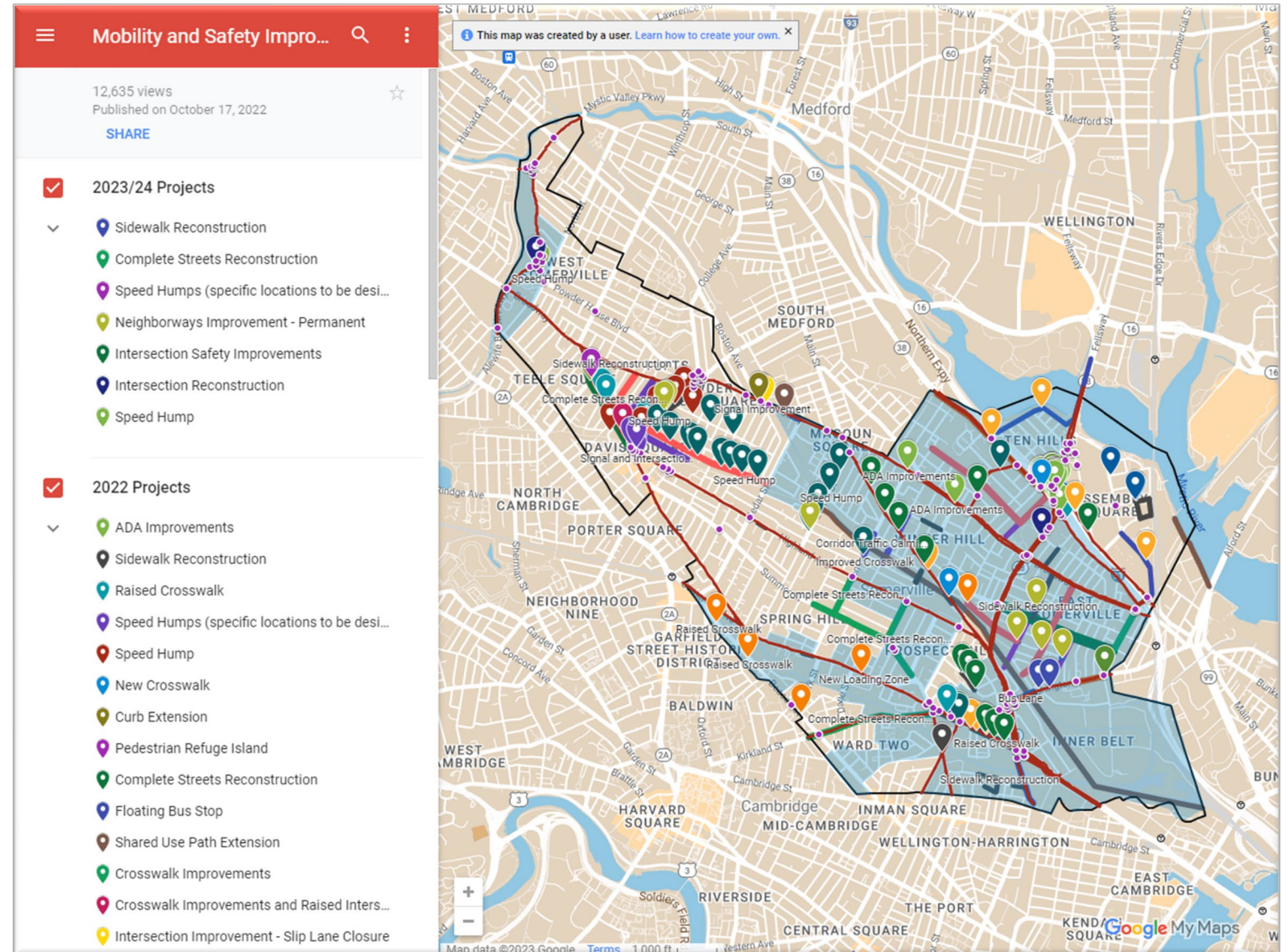
- Safe Routes to School
- Accessibility and safety survey of transit stops

### Transit Priority and Bus Lanes

- East Broadway Extension, Mystic Ave review, Washington St
- Transit Pass Program
- Davis Square Transit Priority Improvements

# Next Steps

- Publish 2022 "indicators" presentation
- Update to Vision Zero Improvements Map



# GLX Stations: Pedestrian Safety & Accessibility Overview



# GLX – Ball Square Station

Crosswalk  
Shortened and realigned  
with Station Entrance  
(CoS-Completed)

Protected Bike  
Lanes -Flex posts  
(CoS Summer)

Crosswalk  
(CoS-Completed)

ADA Sidewalk  
Improvements/  
Slip lane removal/  
Curb Extension  
(GLX-C Spring)

Curb Extensions  
(CoS-Completed)

Crosswalk with  
Pedestrian Refuge  
Island  
(CoS-Completed)

Protected Bike Lanes  
(CoS-Completed)



Accessible Pathway



Entrance

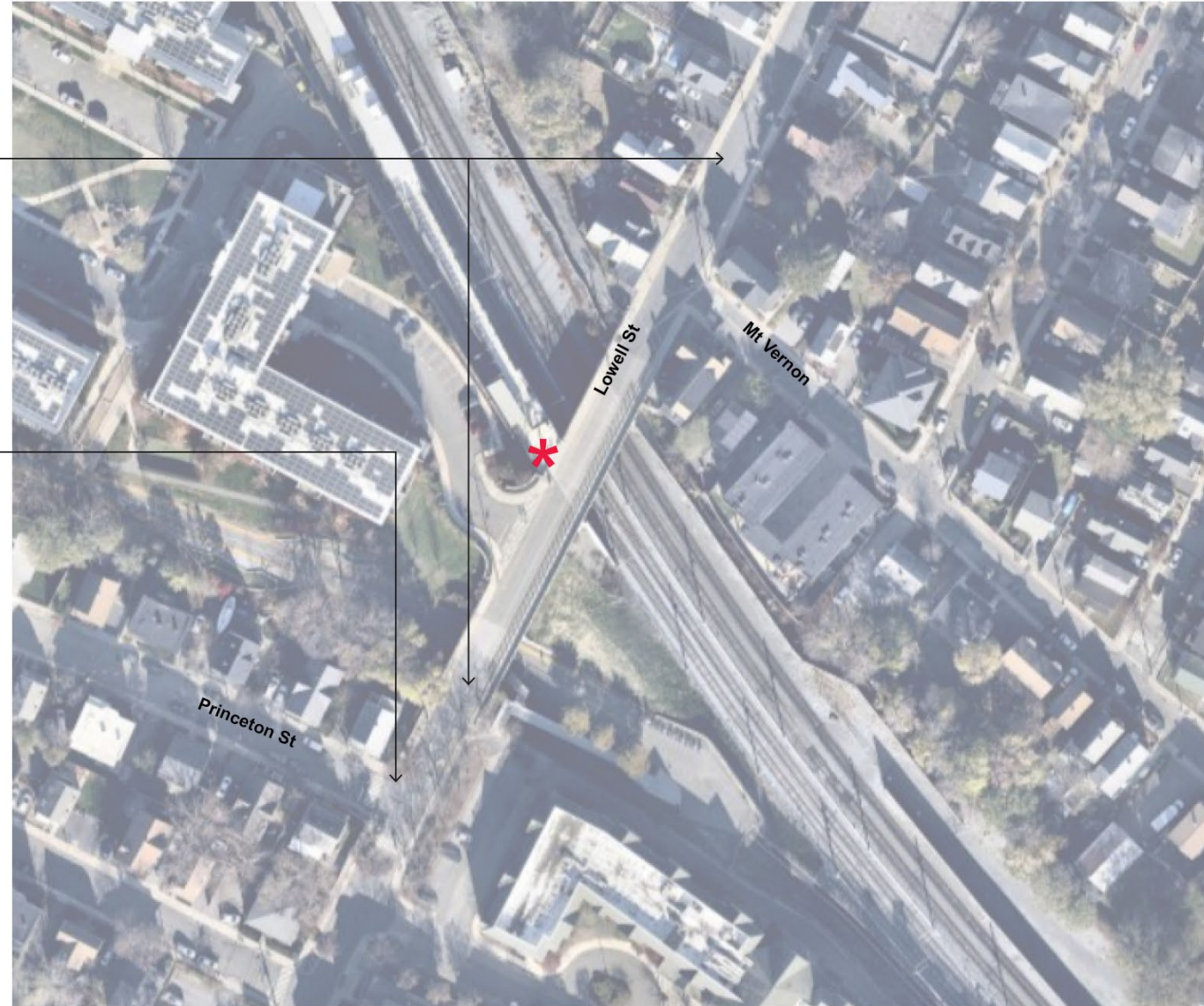
# GLX – Magoun Sq Station

Speed Bumps  
(CoS - Completed)

ADA Sidewalk  
Improvements,  
Raised Crosswalk  
(CoS - Spring)



Entrance





# GLX – Gilman Square Station

Detour  
(CoS - Due to SHS construction,  
Finish: TBD)

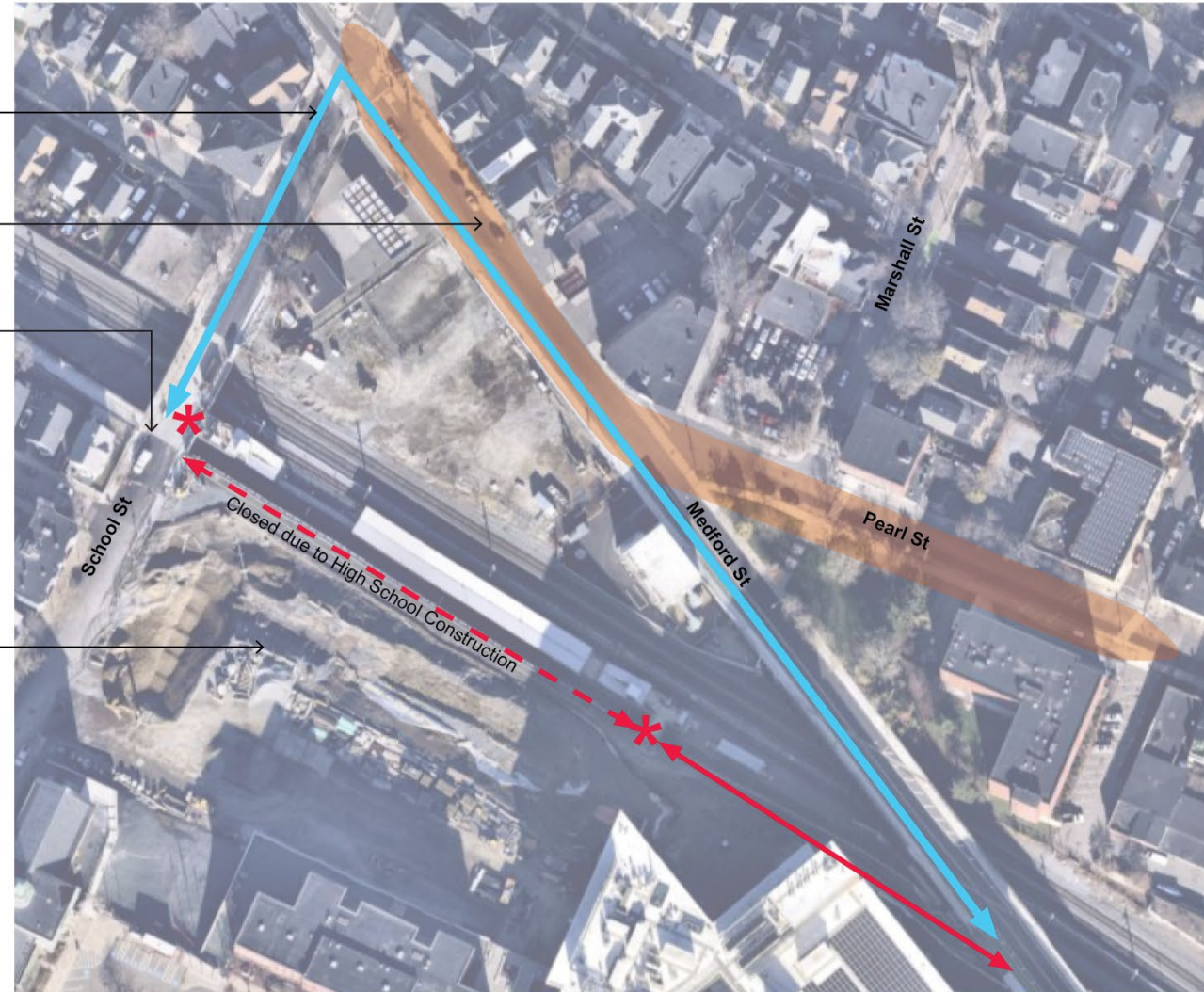
Gilman Square  
Streetscape  
(CoS 60% Design Completed)

Crosswalk  
(CoS - Completed)

High School  
Fields  
(CoS Under Construction)

↔ Accessible Pathway  
(on Community Path)

\* Entrance





# GLX – East Somerville Station

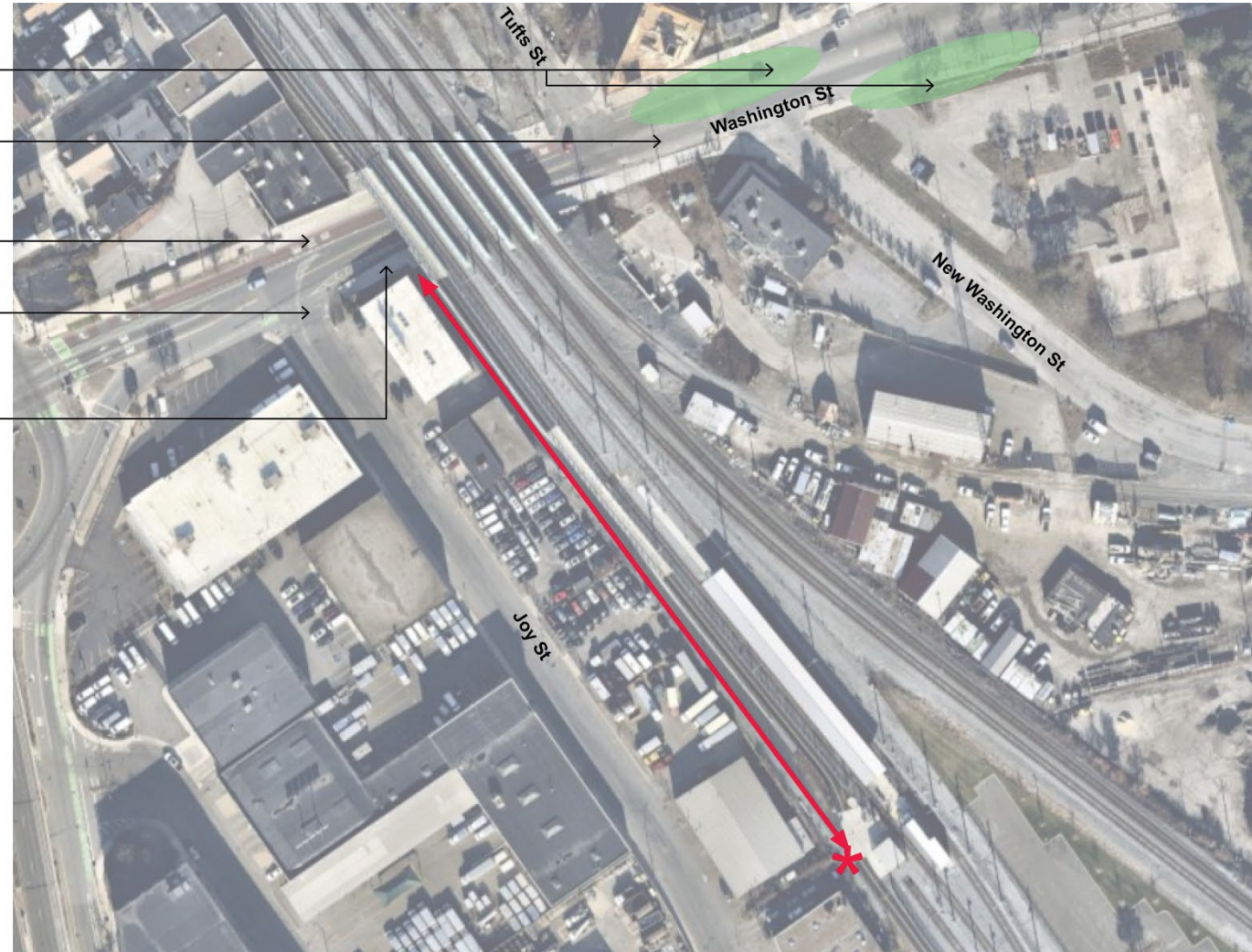
Floating Bus Stops  
(GLX-C Spring/Summer)

Crosswalk/Rapid Flashing  
Beacon  
(GLX-C Spring  
Temporary one right now)

Bus/Bike Lanes  
(Completed)

Crosswalk  
(GLX-C Spring/Summer)

Shared Sidewalk  
(Completed)



↔ Accessible Pathway  
(on Community Path)



Entrance



# GLX – Union Square Station

Union Square Streetscape - 25%  
(CoS - TBD)

Somerville Avenue Utilities and Streetscape Upgrades  
(CoS - Almost Completed)

Widened Accessible Sidewalk  
(CoS - Completed)



Accessible Pathway



Entrance



# Next Month's Committee Meeting

- Guest Jessica Bellow, Engineering Division Traffic Engineer
- Topics to discuss:
  - "No Turn on Red"
  - Traffic Regulations
  - Signal Improvements
  - Send us topics/questions
    - Flex post use for 'clear corners'
    - Ped detours during construction