



City Update

July 2022 PTAC Meeting

Agenda

- Q3 Milestones and Priorities
- Construction updates
- Bike Network Plan
- Route 28/38 Intersection update
- Parking and Curb Use Study

Q3 Milestones and Priorities

Resurfacing Projects

Holland / College Mobility Improvements

Task	Status
Complete striping of College Ave	Ongoing
Complete reconstruction of Holland St sidewalks (Claremon St to Simpson Ave & at Winter St)	Ongoing
Repave Holland St (Claremon St to Simpson Ave & at Winter St)	Exact timing TBD

Pearl St & Six Intersection Mobility Improvements

Task	Status
Begin reconstruction of Pearl St sidewalks	Estimated to begin in Aug
Install raised crosswalk on Cross St at Everett Ave	Estimated to begin in Aug

Western Washington St Mobility Improvements

Task	Status
Develop a conceptual design based on community feedback	Ongoing
Community meeting #2	Currently targeting Sept
Second round of targeted outreach	Will occur after community meeting #2

Quick-Build or Signals Projects

Eastern Washington Rapid Response Bus Improvements

Task	Status
Add red paint to bus lanes	Ongoing
Continue to explore alternative signal timing options	Ongoing

Webster Ave at Washington St Signal Improvements

Task	Status
Implement signal changes	Exact timing TBD

Davis Square Signal Improvements

Task	Status
MBTA signal contractor scheduling underway	Ongoing

Q3 Milestones and Priorities

Quick-Build or Signals Projects

New - East Broadway Bus Lane Extension

Task	Status
Work with MassDOT to complete sign and pavement markings plan	Ongoing
Establish estimated project cost, funding source, and contract vehicle	Ongoing

New - Grand Union Blvd PBLs

Task	Status
Develop sign and pavement markings plan	Ongoing

New - Somerville Ave Improvements at Beacon/Mossland

Task	Status
Assess existing conditions, identify opportunities for improvement	Ongoing
Develop project plan (scope, timeline, funding, etc.)	Ongoing

New – Vertical Separation Pilot (??)

Task	Status
Identify a preferred detail/specification and establish a procurement/installation pathway	Ongoing

Q3 Milestones and Priorities

Capital Projects

Spring Hill Phase 1 Streetscape

Task	Status
Continue sewer, drainage, and water work on Summer St, Central St, and Avon St	Ongoing

Gilman Square Redesign

60% Design Plan Completed Q2

Highland Ave Redesign

Task	Status
Continue to collect feedback and existing conditions data	Ongoing

Clarendon Hill

Task	Status
Bid construction services	Ongoing; to be finished end of July
Construction outreach, tabling and resident meetings	Early Aug.

State Projects

Mystic Ave at Shore Dr Intersection Improvements

Task	Status
Complete design and permitting	Ongoing
Plan/coordinate construction with Eversource	Ongoing

Route 28/38 Intersection Early Action

Task	Status
Complete construction of raised crosswalks	Ongoing

Long-Range Plans

Bike Network Plan

Task	Status
Publish draft network & solicit feedback	Ongoing

Parking and Curb Use Study

Task	Status
Community meetings in late June	Complete
Finalize recommended strategies	Ongoing

Construction Updates

Holland Street and College Avenue

- Pedestrian refuge islands and floating bus stop at Holland and Cameron
- Curb extensions at Hodgkins-Curtin Park, Paulina St., and Winter St.
- Raised crosswalk at College and Morrison
- Speed humps on Wallace St. and Winslow Ave.

Broadway at Winchester

- Pedestrian refuge island
- Buffered/parking-protected bike lane
- Repaving and pavement markings complete

Mystic Avenue at McGrath

- Pedestrian refuge island at Mystic Ave. SB and the I-93 on-ramp/Kensington Connector
- Raised crosswalk at Kensington Connector crossing on Mystic Ave. NB **[scheduled to be completed 7/22]**

Construction Updates

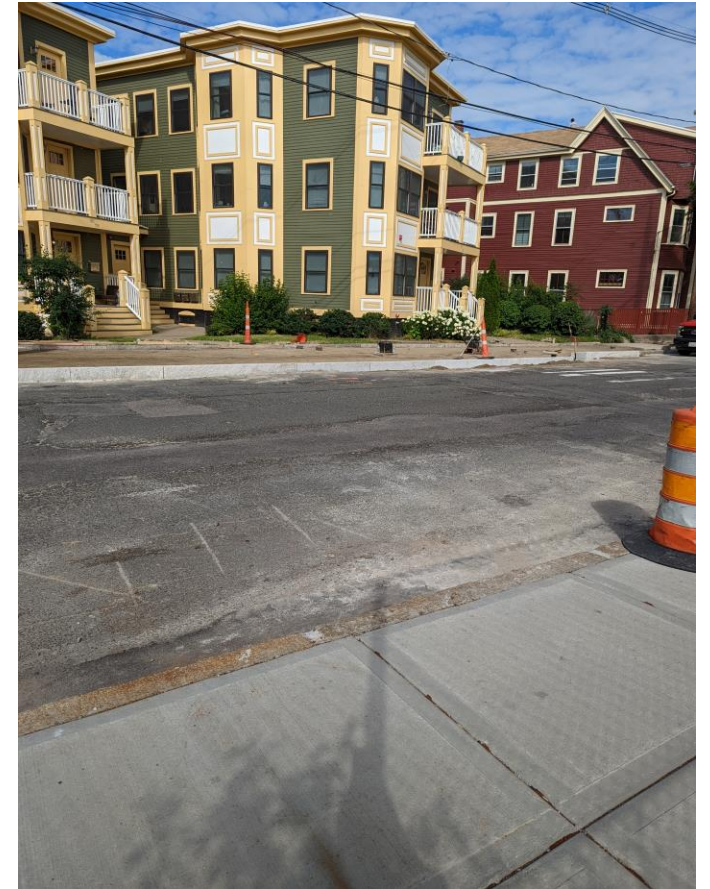
Broadway at Winchester



Holland at Cameron



Holland at Hodgkins-Curtin Park



Construction Updates

Mystic Ave. SB at Stop and Shop and I-93



Citywide Bicycle Network Plan

City of Somerville Draft Bike Network Vision

- Protected Bike Lane
- One-Way Protected Bike Lane
- Neighborway
- Shared Street
- Off-Street Path
- Existing Bike Lane



Citywide Bicycle Network Plan

**Winter
2021/2022**

**Spring
2022**

**Summer
2022**

**Fall
2022**

Community Engagement

Network Draft

Plan Document

**Bicycle
Network Plan**

Citywide Bicycle Network Plan

- We have published our draft network vision and would love to hear your feedback on the network
 - Email your comments to transportation@somervillema.gov
 - Directly add your comments to our Public Input Map: somervillema.gov/bikenetwork
 - Join us at one of our upcoming pop-ups or community events:
 - July 12, 4:30pm - 6:30pm, Community Path and Cedar Street Crossing
 - July 16, 11:00am - 5:00pm, [ArtBeat Festival](#)
 - July 21, 4:30pm - 6:30pm, Foss Park near Broadway
 - July 26, 3:30pm - 5:30pm, Assembly Square on Great River Road
- If you have any questions, please don't hesitate to reach out to us at transportation@somervillema.gov.



MassDOT Projects in the Area

Bridge Substructure Repairs (# 606528)

- Public meeting held June 9, 2022

Route 28 / Route 38 Intersection (# 608562)

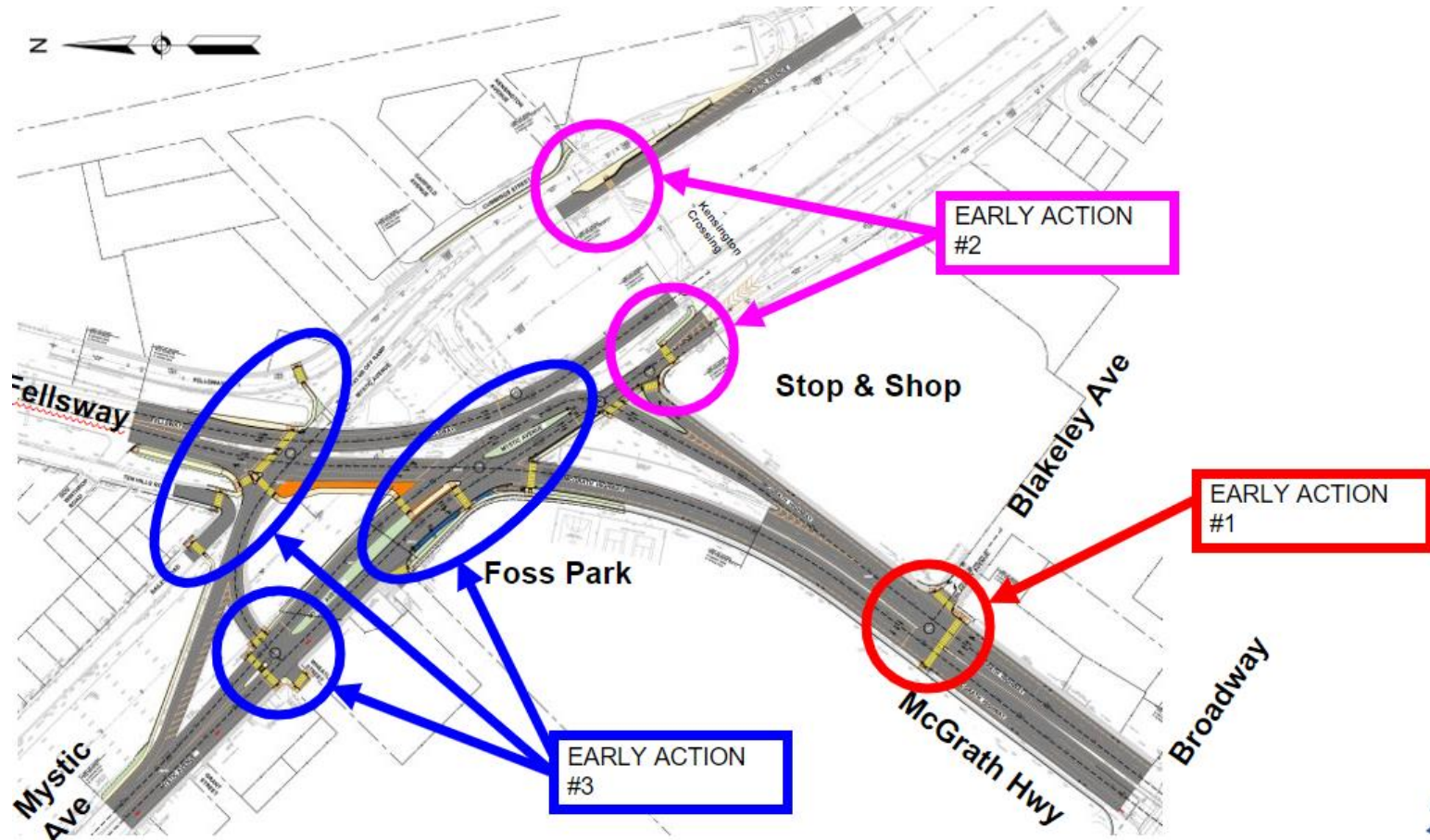
- Design in progress

McGrath Highway Resurfacing (# 608482)

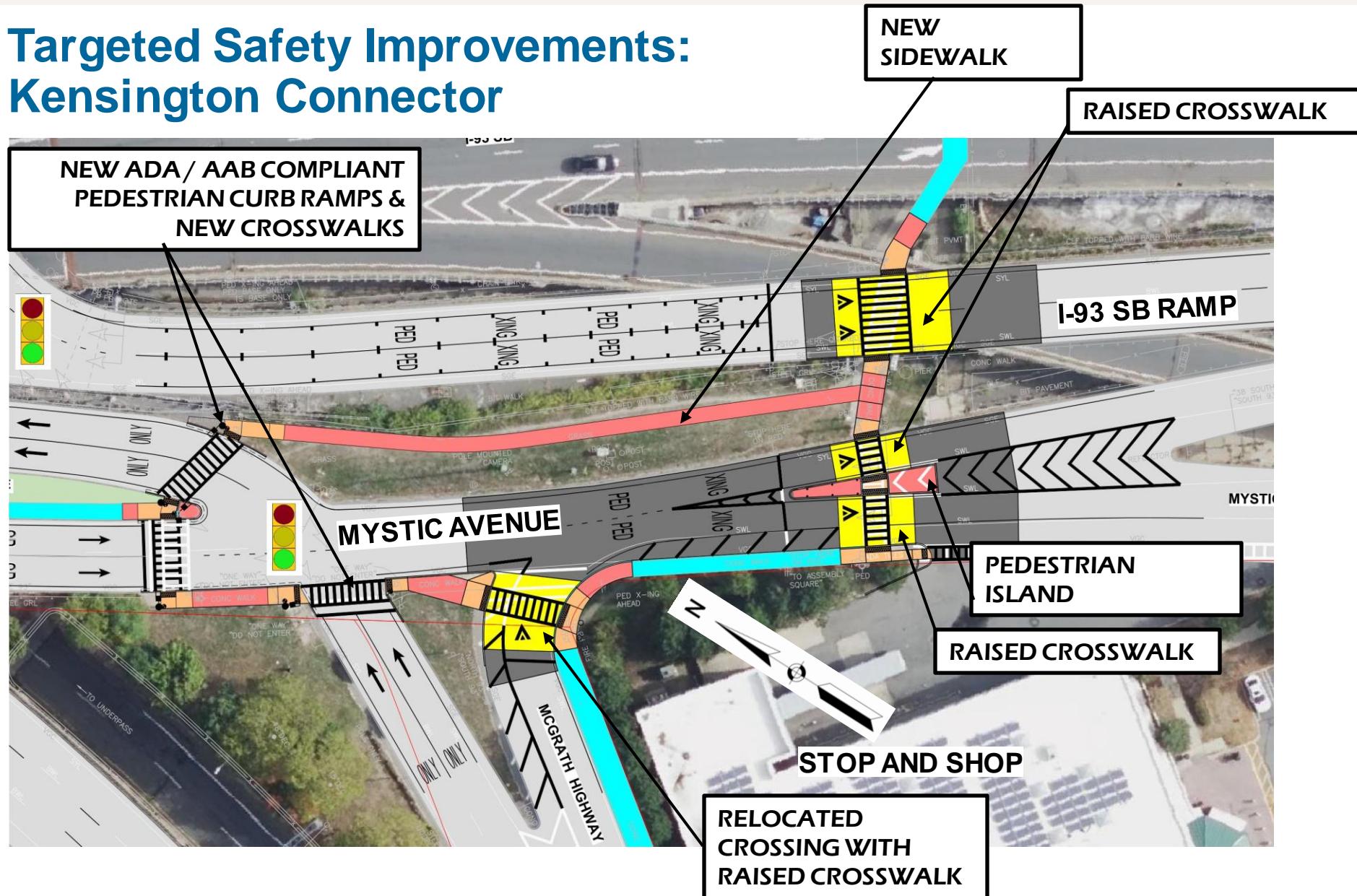
- Under construction

Route 28/Route 38 Intersection Improvements

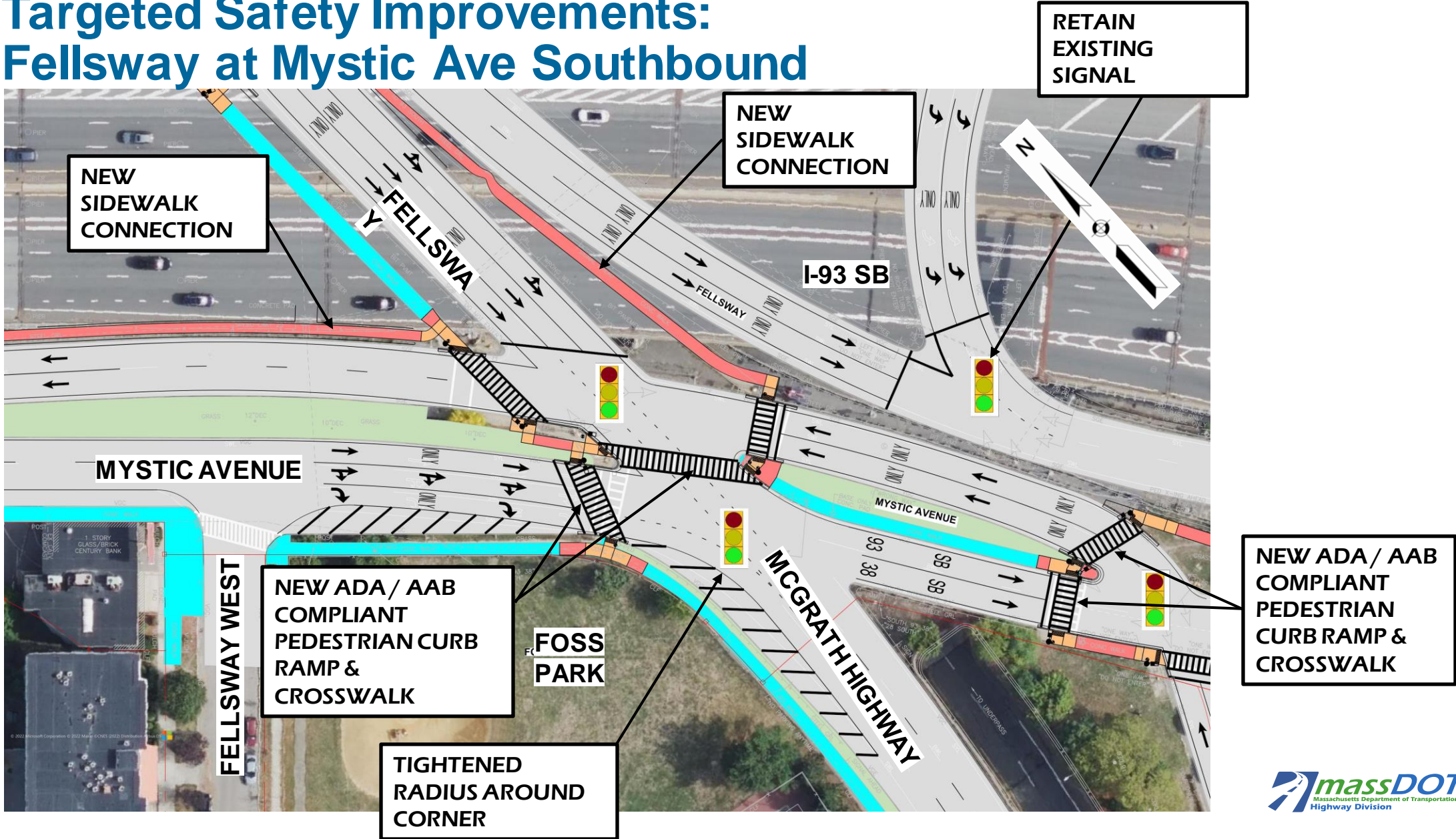
- Two phases of improvements - '**early action**' pedestrian safety and accessibility improvements; and, **longer-term** full intersection reconstruction.
- 'Early Action' Improvements are ongoing; MassDOT coordinating with the City on progress, temporary roadway closures.
- Long-term full reconstruction project is at draft 25% design; MassDOT coordinating with the City on design review.



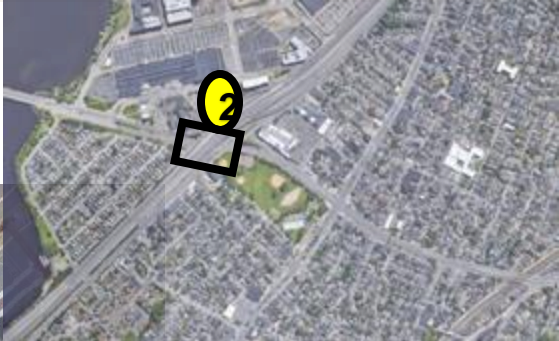
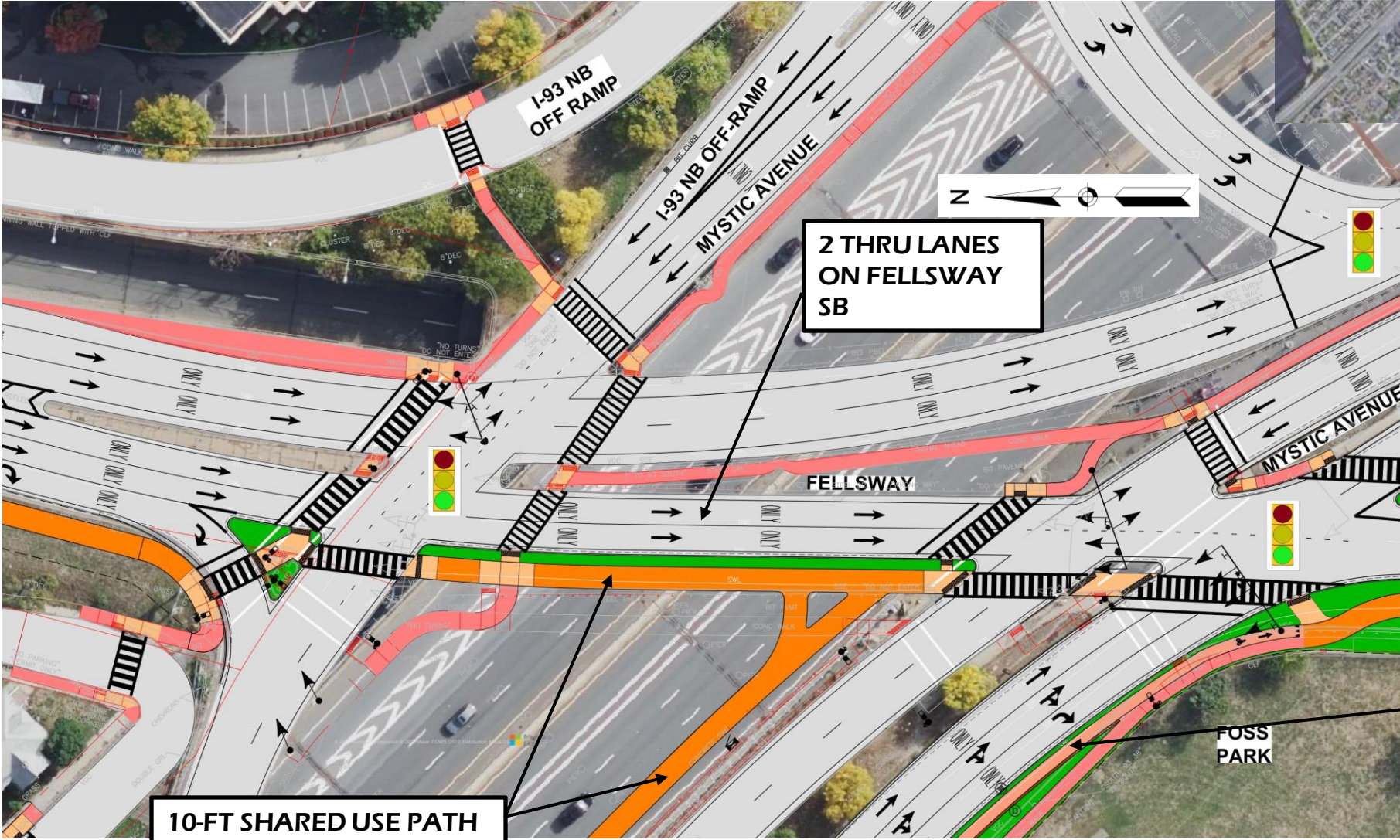
Targeted Safety Improvements: Kensington Connector



Targeted Safety Improvements: Fellsway at Mystic Ave Southbound



2 - Fellsway SB under I-93



Route 28/Route 38 Project Update

Next steps

- Continued construction of early-action improvements
- Review conceptual design and send comments
- Fall 2022: Design Public Hearing
- Fall 2023: Final Design
- Spring 2024: Anticipated construction start

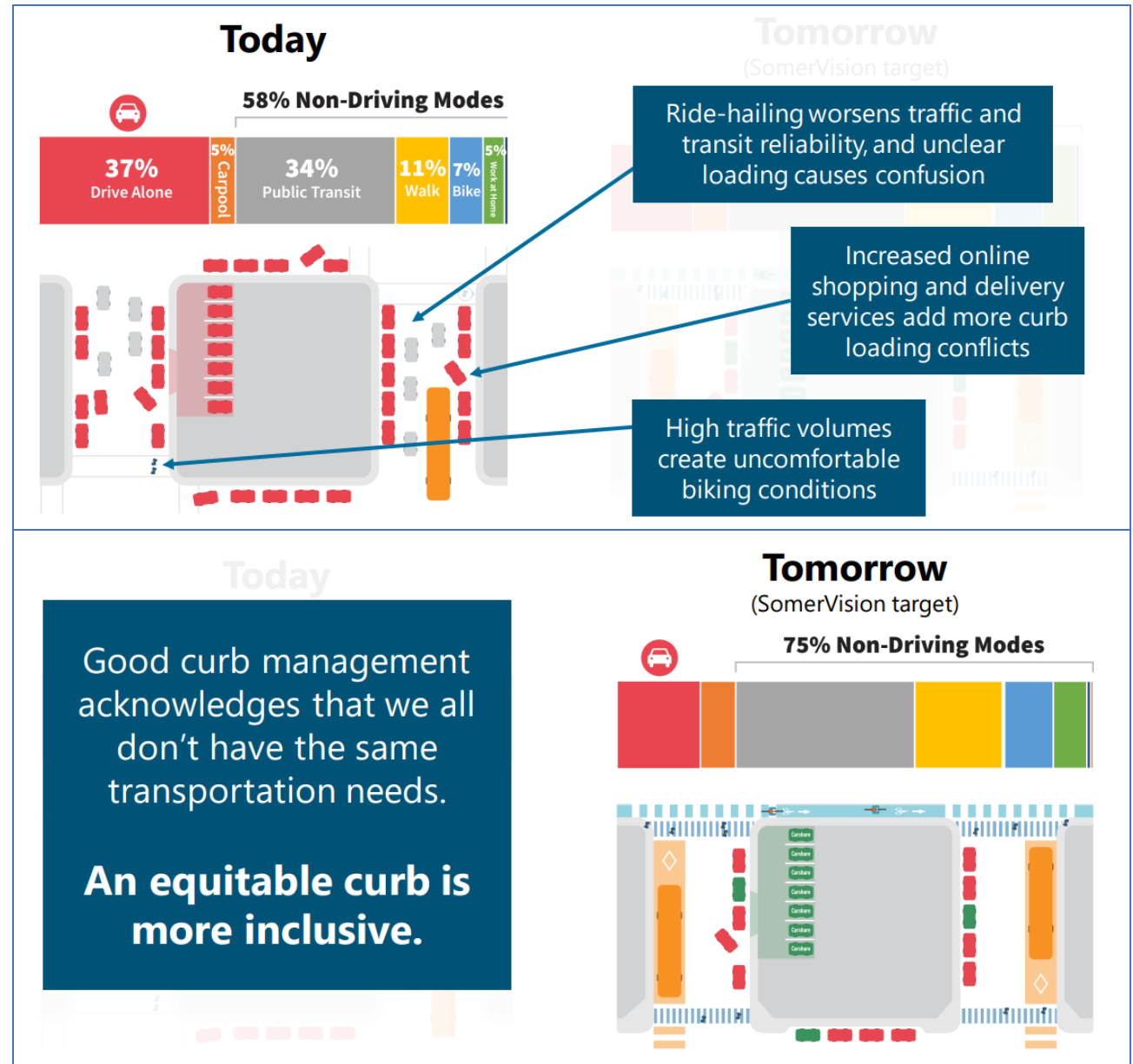
How to stay involved

- Email MassDOT @ MassDOTProjectManagement@dot.state.ma.us
- MassDOT Design Public Hearing website: [Somerville - Signal and Intersection Improvements at McGrath Highway \(Route 28\) / Mystic Avenue \(Route 38\) project | Mass.gov](https://www.mass.gov/info-details/somerville-signal-and-intersection-improvements-at-mcgrath-highway-route-28-mystic-avenue-route-38-project)
- City of Somerville Mobility web page 'State Highways' section
- Follow @SomervilleInfr1 on Twitter for construction and road closure updates

Citywide Parking and Curb Use Study Update

Goal:

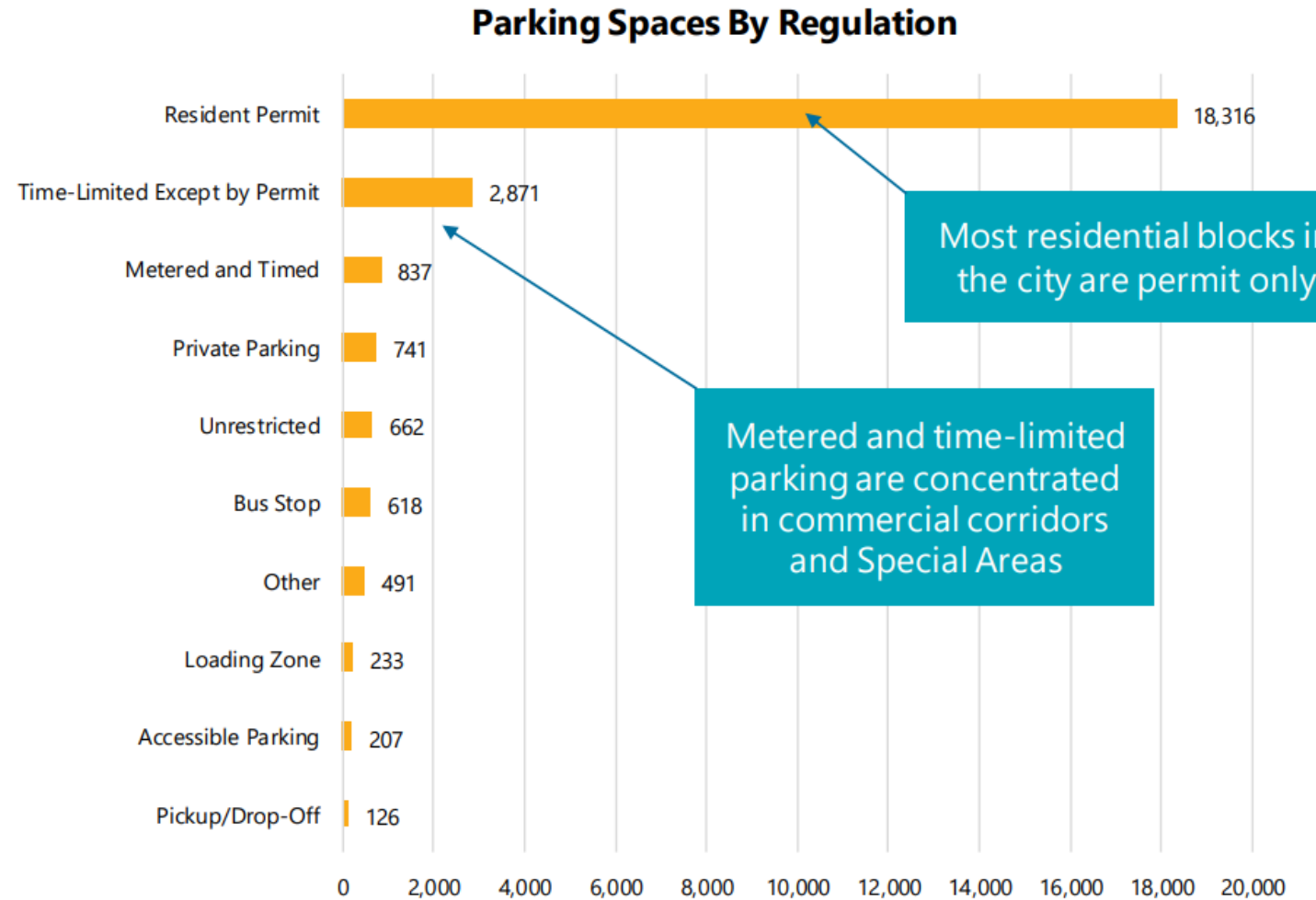
Comprehensively understand parking in Somerville; make recommendations to guide the City in bringing parking policies in alignment with City goals, community values, and future needs.



Citywide Parking and Curb Use Study Update

Process

- Existing conditions data collection and curb profile
- Parking study task force meetings
- Community meetings
- Draft recommendations
- Continued outreach and engagement:
<https://voice.somervillema.gov/parking-study> [new survey and comment tool]
- Final report anticipated in Fall 2022



Citywide Parking and Curb Use Study Update

Curb Prioritization Framework

- Defines a prioritization of curb uses based on surrounding context
- Not 'if this than that', but a way to compare community goals with the status quo.

CURB
TYPE

CURB USE PRIORITY

HIGH

LOW

**Commercial/
Mixed Use**



Mobility



People &
Goods



Activated



Transportation
Services



Green



Storage

Residential



Mobility



People &
Goods



Transportation
Services



Storage



Green



Activated

Citywide Parking and Curb Use Study Update

Draft Recommendations

Strengthen parking administration and operations

- Enhance enforcement and add staff capacity
- Invest in License Plate Reader (LPR) technology and virtual permits
- Formalize and improve communications processes, including website.

Reallocate curb space to support community goals

- Implement curb prioritization framework
- Increase accessible parking
- Expand EV charging as well as bus and bike infrastructure

Adjust regulations to better manage parking demand

- Set meter pricing based on demand
- Implement flexible loading zones
- Add meters at popular two-hour parking areas to encourage turnover

Revise the permit program to meet community goals

- Enforce permits based on zones and consider a cap on permits by zone in needed
- Increase the base permit price
- Revise the price structure to charge more for additional permits or for users who have off street parking



Parking and Curb Use Study Update

Discussion