

Special September 2022 Traffic Commission Meeting

Holland Street Draft Safety Proposal

Curtis St Pre-Construction Regulations

Electric Ave to Teele Square



Curb Use Type	Number of parking spaces	
	Pre-Construction	New Proposal
Permit Parking Only	7	
Metered Parking	0	
Loading Zone	0	
Total	7	

Curtis St Draft Safety Proposal

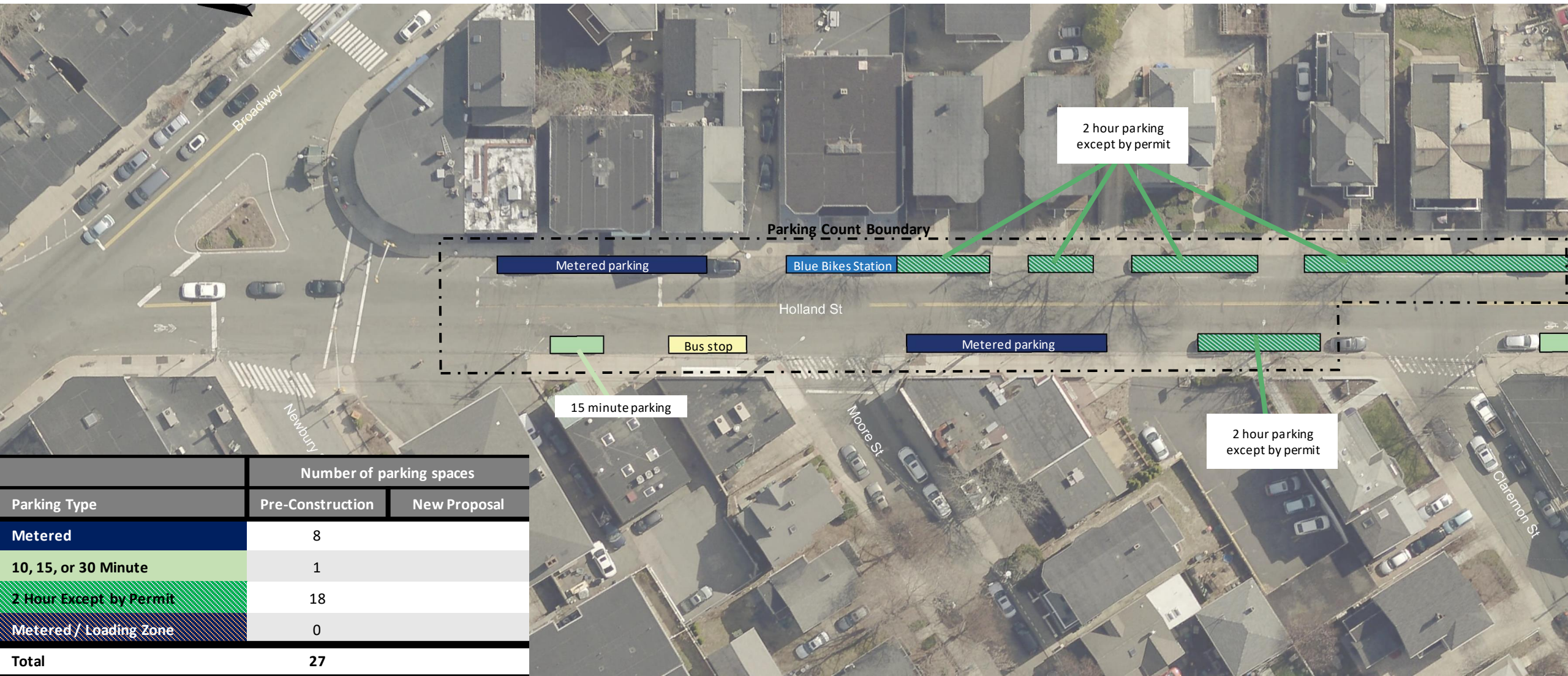
Electric Ave to Teele Square



Curb Use Type	Number of parking spaces	
	Pre-Construction	New Proposal
Permit Parking Only	7	5
Metered Parking	0	2
Loading Zone	0	2
Total	7	9

Holland Street Pre-Construction Regulations

Teele Square to Claremon St



Parking Type	Number of parking spaces	
	Pre-Construction	New Proposal
Metered	8	
10, 15, or 30 Minute	1	
2 Hour Except by Permit	18	
Metered / Loading Zone	0	
Total	27	

Holland Street Draft Safety Plan

Teele Square to Claremon St

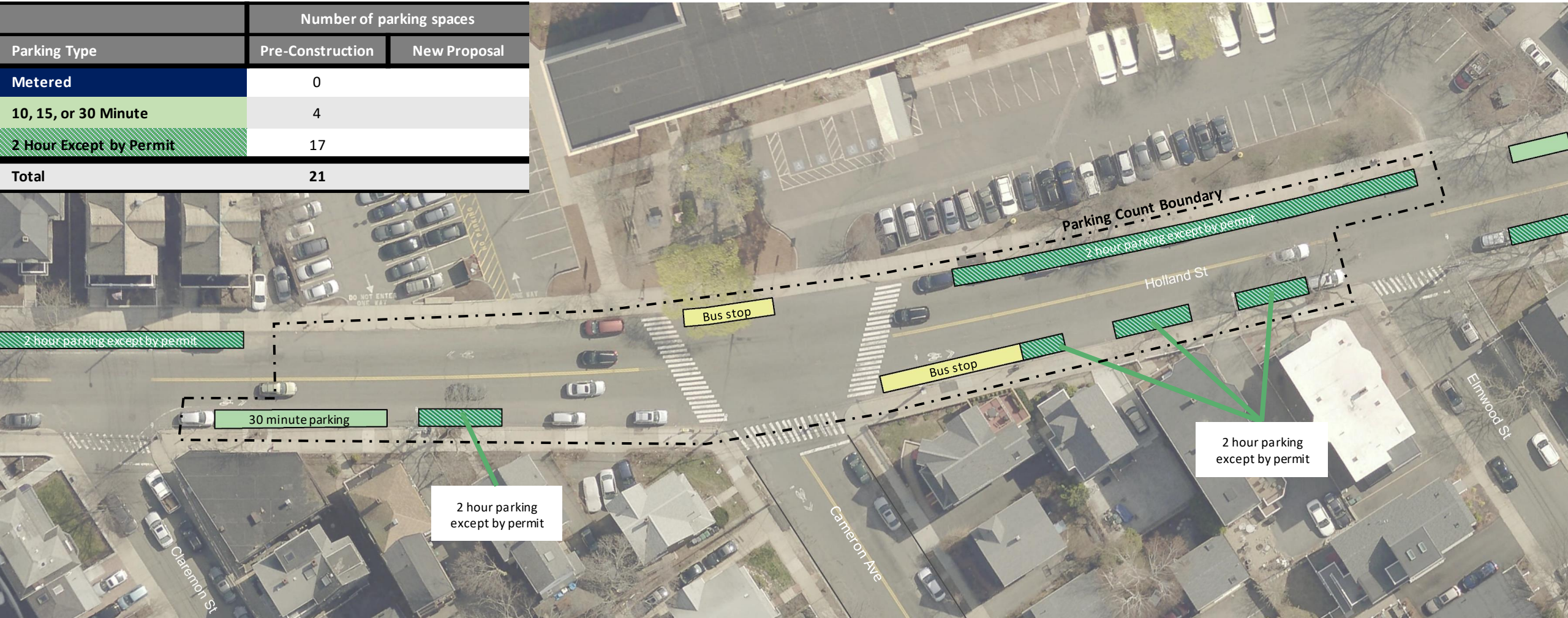


Parking Type	Number of parking spaces	
	Pre-Construction	New Proposal
Metered	8	16
10, 15, or 30 Minute	1	0
2 Hour Except by Permit	18	0
Metered / Loading Zone	0	3
Total	27	19

Holland Street Pre-Construction Regulations

Claremon St to Elmwood St

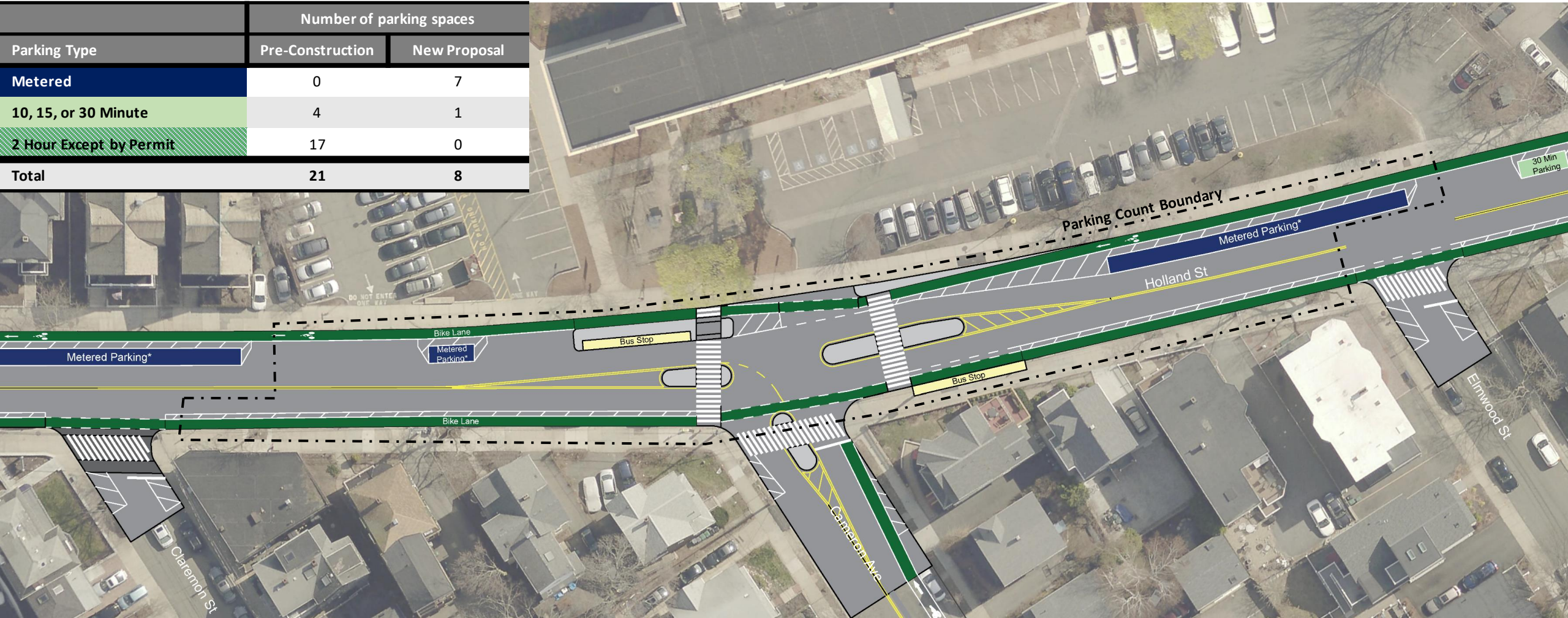
Parking Type	Number of parking spaces	
	Pre-Construction	New Proposal
Metered	0	
10, 15, or 30 Minute	4	
2 Hour Except by Permit	17	
Total	21	



Holland Street Draft Safety Proposal

Claremon St to Elmwood St

	Number of parking spaces	
Parking Type	Pre-Construction	New Proposal
Metered	0	7
10, 15, or 30 Minute	4	1
2 Hour Except by Permit	17	0
Total	21	8



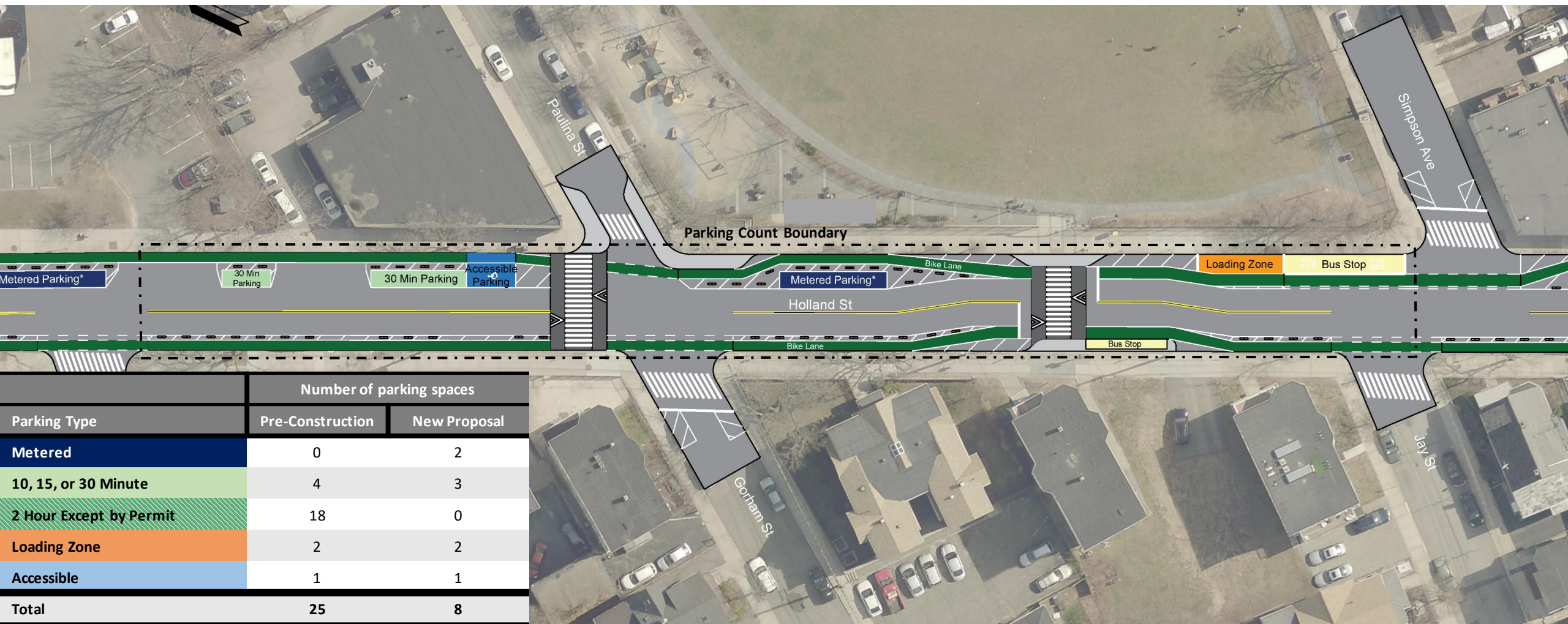
Holland Street Pre-Construction Regulations

Elmwood St to Simpson Ave



Holland Street Draft Safety Proposal

Elmwood St to Simpson Ave



Parking Type	Number of parking spaces	
	Pre-Construction	New Proposal
Metered	0	2
10, 15, or 30 Minute	4	3
2 Hour Except by Permit	18	0
Loading Zone	2	2
Accessible	1	1
Total	25	8

Holland Street Pre-Construction Regulations

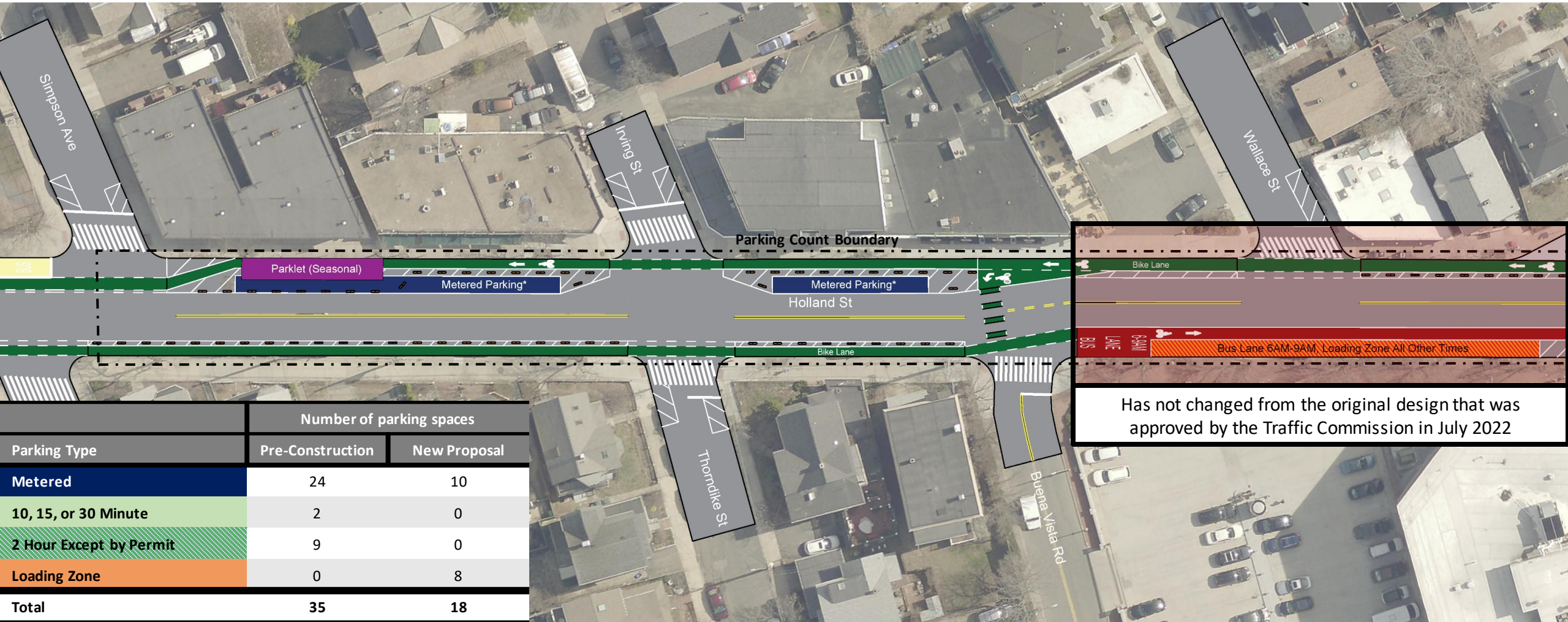
Simpson Ave to Winter St



Parking Type	Number of parking spaces	
	Pre-Construction	New Proposal
Metered	24	
10, 15, or 30 Minute	2	
2 Hour Except by Permit	9	
Loading Zone	0	
Total	35	

Holland Street Draft Safety Proposal

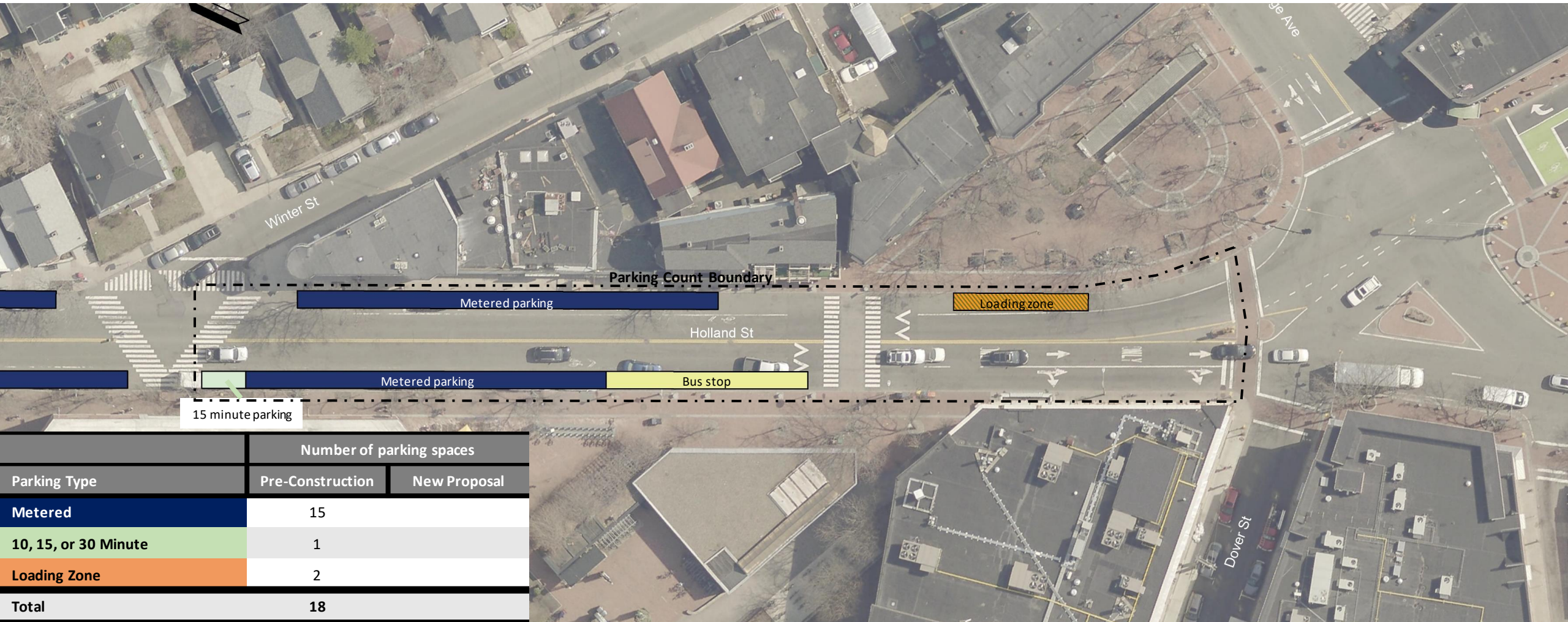
Simpson Ave to Winter St



Parking Type	Number of parking spaces	
	Pre-Construction	New Proposal
Metered	24	10
10, 15, or 30 Minute	2	0
2 Hour Except by Permit	9	0
Loading Zone	0	8
Total	35	18

Holland Street Pre-Construction Regulations

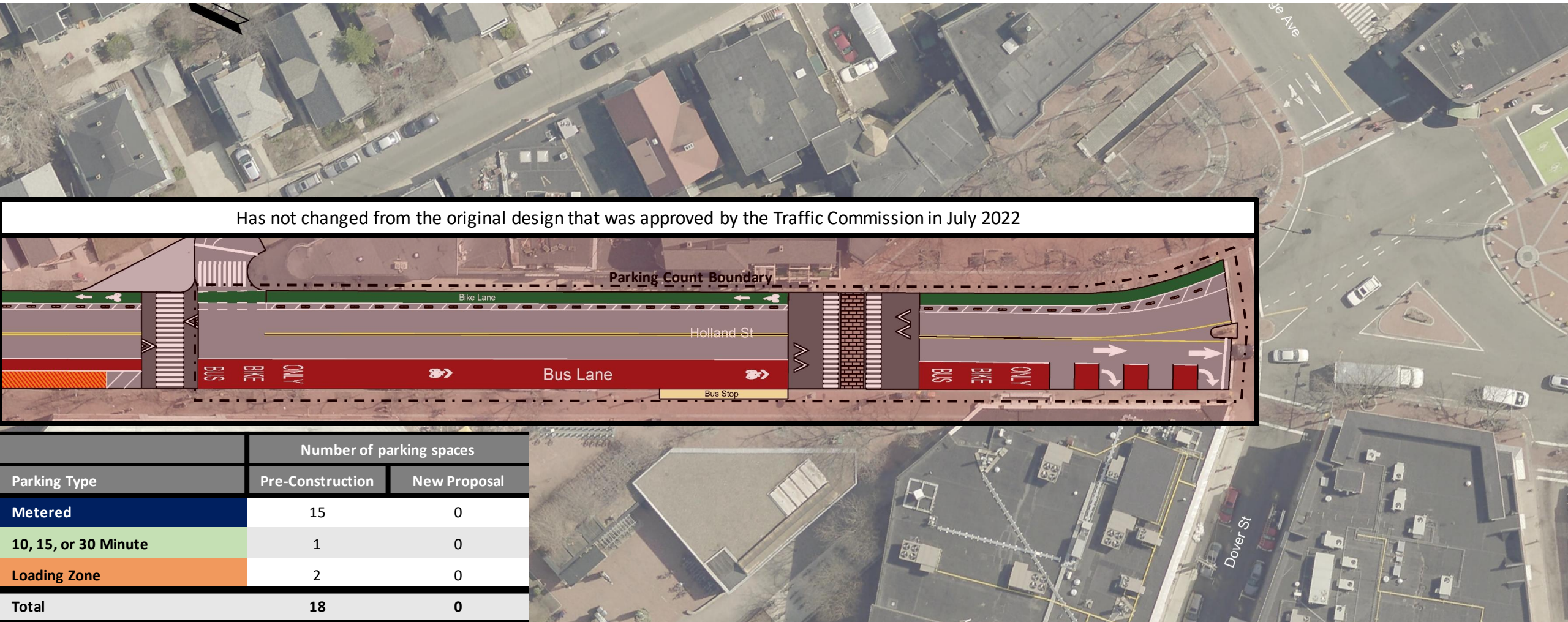
Winter St to Davis Square



Parking Type	Number of parking spaces	
	Pre-Construction	New Proposal
Metered	15	
10, 15, or 30 Minute	1	
Loading Zone	2	
Total	18	

Holland Street Draft Safety Proposal

Winter St to Davis Square



Has not changed from the original design that was approved by the Traffic Commission in July 2022

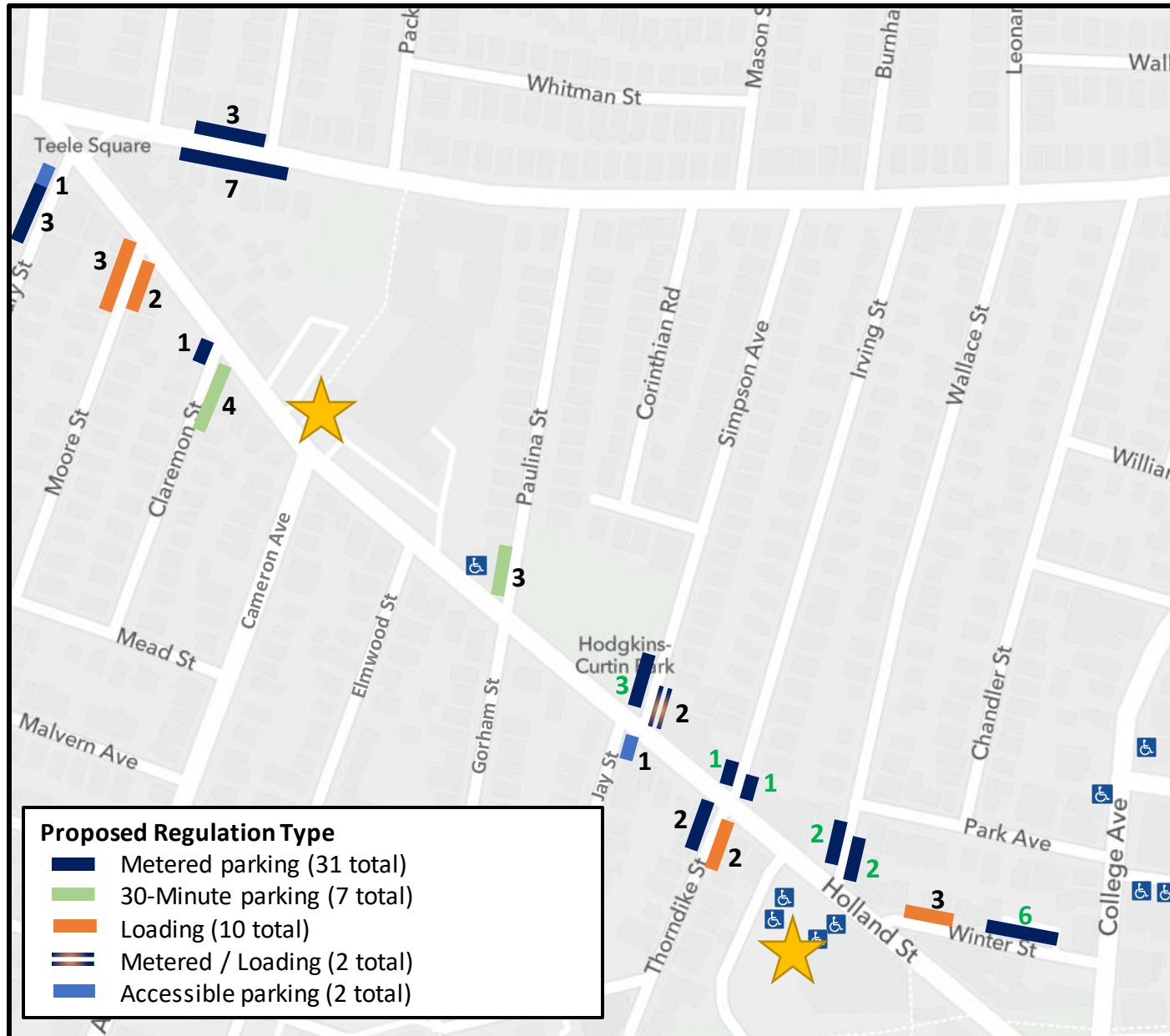
Parking Type	Number of parking spaces	
	Pre-Construction	New Proposal
Metered	15	0
10, 15, or 30 Minute	1	0
Loading Zone	2	0
Total	18	0

Holland St Safety Proposal Parking Change

Newbury St to Buena Vista Rd

	Number of parking spaces	
Parking Type	Pre-Construction	New Proposal
Metered	21	32
10, 15, or 30 Minute	11	7
2 Hour Except by Permit	62	0
Loading Zone	2	2
Metered / Loading Zone	0	3
Accessible	1	1
Total	97	45

Proposed Side Street Parking Regulation Changes



- All proposed regulations become residential permit parking overnight
- Any numbers shown in **green** have already been approved by the Traffic Commission

★ Off-street paid parking available to the public

Public Comment

Zoom Instructions for Public Comment

- To participate, please select the “raise hand” function
- Find this by either clicking on the "Reactions" button in your toolbar, and a window will pop up with a "Raise Hand" button. In some Zoom versions, you can find it directly on your toolbar or through the "Participants" window.
- We will call on you when it is your turn and unmute your microphone.
- We will share the queue of raised hands so that everyone in the zoom session has an idea of who is up next
- If you are on the phone, you can press *9 to raise your hand
- If you would have any technical difficulties at any time, please reach out to Kate White by email at kwhite@somervillema.gov or by phone at 617-366-7293.

Written Public Comment

- Written comments can be sent by email to the Traffic Commission at trafficcommission@somervillema.gov
- (Please CC: transportation@somervillema.gov)
- Or by mail to: Parking Department, ATTN: Traffic Commission, 133 Holland St, Somerville, MA 02144
- Written comments will be accepted until 4:00 pm on the day of the next meeting

Appendix

Explanation of Regulations

- **Metered Parking:** Any vehicle, regardless of permit status, may park at a rate of \$0.25 per 12 minutes for a maximum of 2 hours from 8am to 8pm. Typically becomes residential permit parking only from 8pm to 8am.
- **10, 15, or 30 Minute Parking:** Any vehicle, regardless of permit status, may park for the specified amount of time. Typically becomes residential permit parking only from 6pm to 8am.
- **2 Hour Parking Except by Permit:** With a parking permit, may park for any desired amount of time at any time of day. From 8am to 2:30am, non-permit holders may also park for up to 2 hours.
- **Loading Zone:** Any vehicle with a commercial plate may park for up to 20 minutes, and any vehicle with a passenger plate may park for up to 5 minutes
- **Accessible Parking:** Any vehicle with a registered accessible parking placard may park for any desired amount of time at any time of day.