



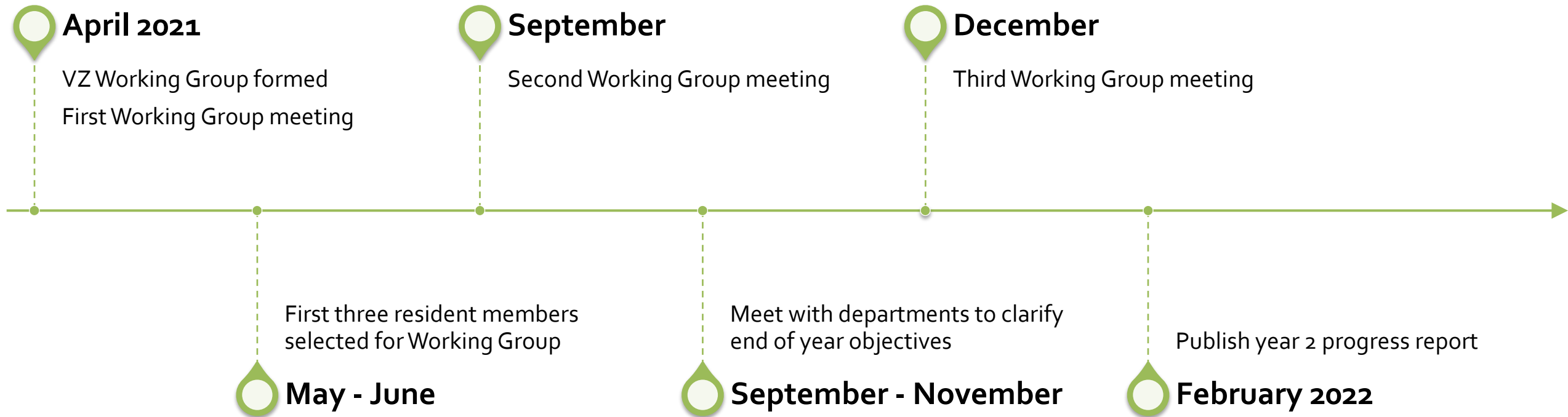
September 2021 PTAC Meeting: City Update

Agenda

- Vision Zero
- Pearl Street
- GLX Update
- 311 Introduction
- Open call for new PTAC members
- Project/Planning Updates

Reminder: Comments on Alewife Brook Pkwy and Powder House Blvd intersection 60% design due this week

Vision Zero Update: Working Group



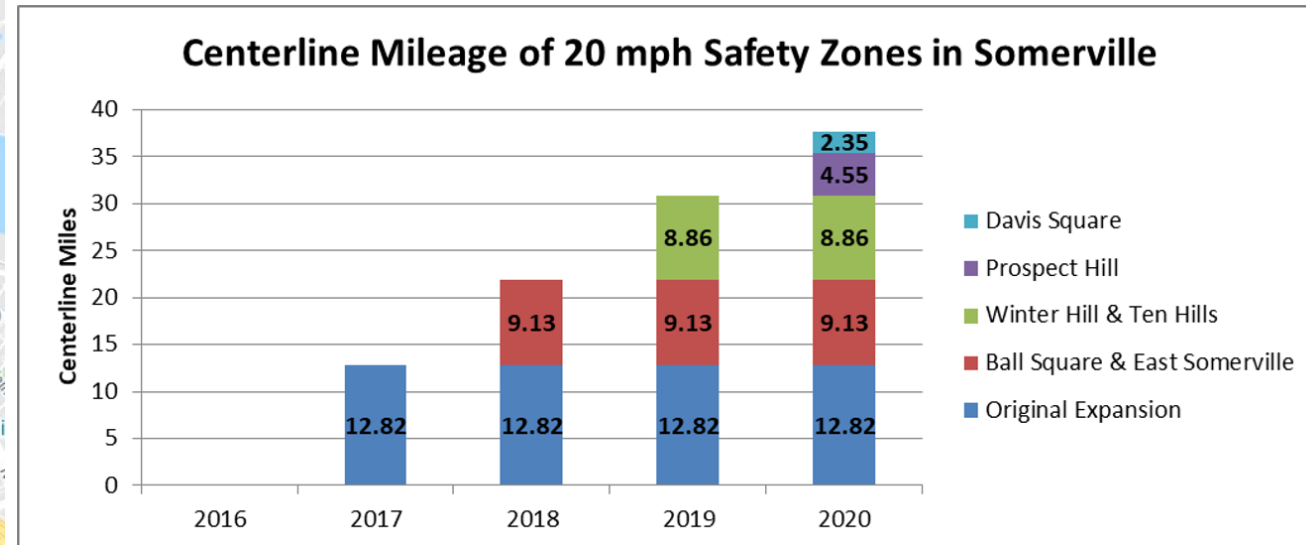
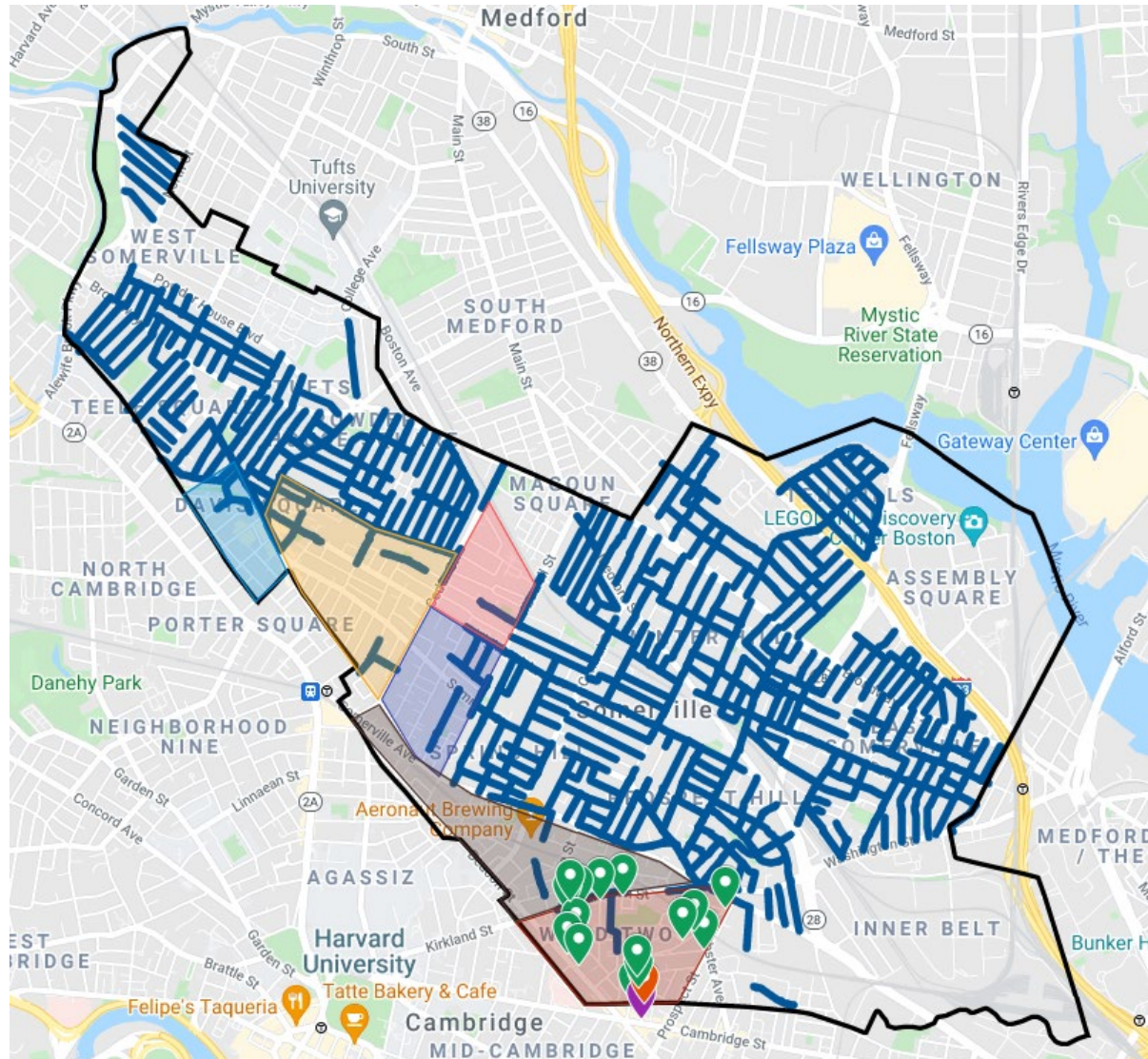
Vision Zero Update: Working Group

The Vision Zero Working Group has been focused on:

- Getting everyone up-to-speed with VZ language and actions
- Building relationships between City Departments and resident members
- Discussions of the structure/organization of the Working Group and its meetings

Vision Zero Update: Safety Zones

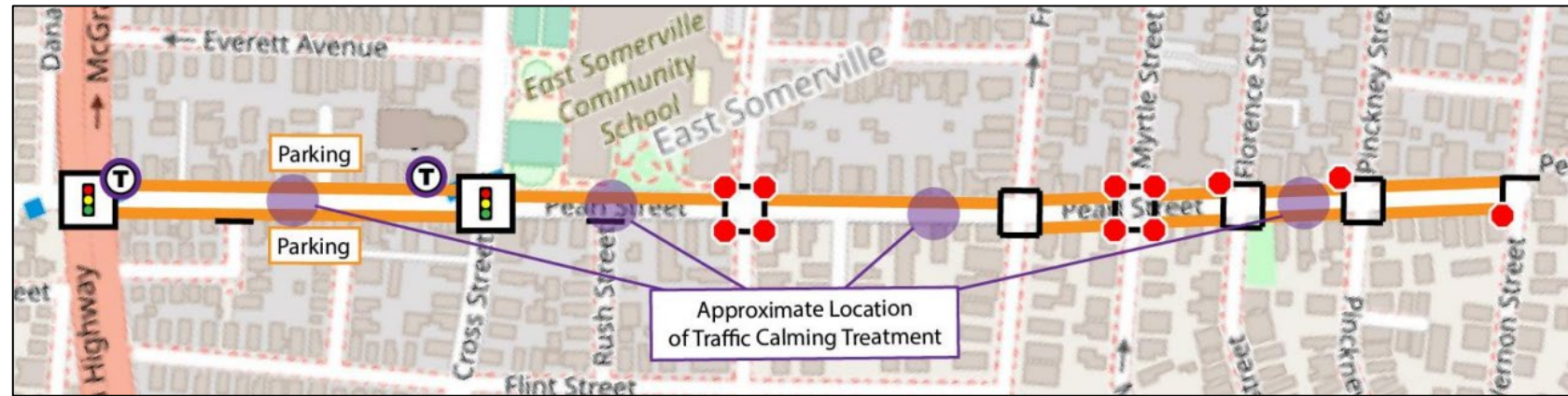
- Traffic Commission approving 1-2 new Safety Zones every month or two
- 8 new safety zone neighborhoods approved in 2021
- Mobility working with Parking to install signage in 6 new safety zone neighborhoods
- Aiming to cover remainder of City by end of 2021



Pearl Street Update

- Received a lot of useful feedback to date from SBAC, PTAC, SCPD, and through the community meeting and project website – 370 survey responses
- Survey analysis ongoing, but general support for bike and ped improvements along corridor.
- Focusing on traffic calming at mid-block crosswalks and priority intersections between Cross St. And Mt. Vernon St.
- More substantial update on design direction expected later this fall.

Mid-block traffic calming locations



Priority intersections for traffic calming



GLX Update

- School Street Bridge
 - Open for pedestrians
 - Open for emergency vehicles beginning of October
 - Final opening coordinated with High School construction
- Medford Street Bridge
 - Schedule for full opening in October '21
- Service
 - Lechmere, Union Square stations scheduled to open December '21
 - Medford branch stations schedules to open May '22
- Community Path
 - Scheduled to open when Medford branch stations open



311 Introduction

Location

Details

Contact Info

Type of Issue *

Sidewalk repair

Request for sidewalk repair. An initial assessment will be completed by the Department of Public Works within three business days to address any immediate safety concerns. Sidewalk repairs cannot be worked on during winter months (typically, November-March) except to address safety concerns and temporary patches.

1 related knowledge base articles


Is there a panel raised

Is it crumbling

Is it cracked

Comments *

Describe the issue

 Add Photos or Files

Upload up to 5 photos or files. Drag and drop here to upload.

311 requests made online, email, or through the call center are **routed to appropriate department or division**

- Sidewalk repair requests: routed to DPW
- Crosswalk and other pavement markings requests: routed to Engineering
- Traffic calming and other new infrastructure: routed to Mobility

Immediate sidewalk safety issues are addressed within 3 business days

New traffic calming interventions or crosswalks involve design, new materials, restricting parking (Traffic Commission approval) and can take longer

Submitting feedback through 311 is important because it routes feedback to the appropriate department, creates a log of constituent feedback, allows tracking/mapping of concerns, helps City understand how requests are being responded to

Call for New PTAC Members

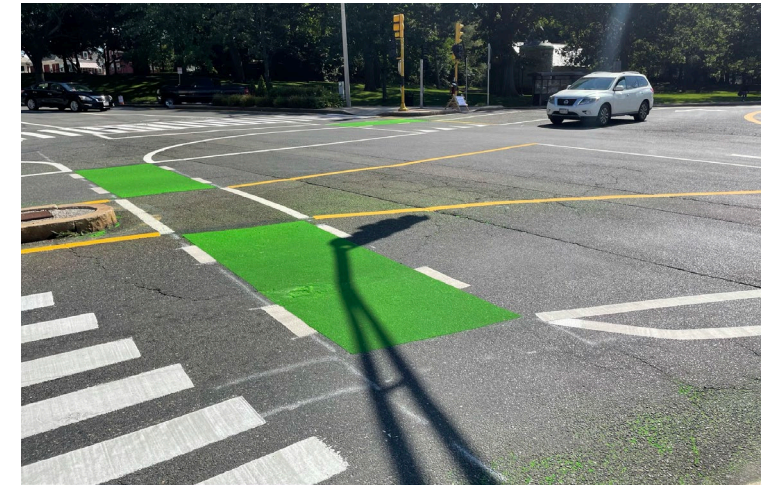
- Open call for new members ends tomorrow 9/17 at noon
- Received 10 applications so far – tentative plan is to interview all applicants pending final count.
- Plan is to have two Mobility staff and one officer (as available) serve on the interview committee.
Pending time slots for 30 minute interviews:
 - Friday 9/24 @ 2-3:30pm
 - Monday 9/27 @ 4:30-6pm
 - Wednesday 9/29 @ 3-5pm
 - More to come as needed
- Looking for as much diversity as possible, in all forms – demographic, travel modes, age, geographic distribution around Somerville
- We will report back to the committee on members to be recommended to the Mayor for appointment.

Project/Planning Updates

- College Ave
 - Main sidewalk resurfacing is continuing, nearing completion
 - Traffic Commission decision has been appealed – public hearing expected this fall
- Powder House Circle
 - Thermoplastic lines are largely complete, ruby lake green complete, tan in progress
 - Bus stop and parking sign installation; traffic sign installation underway
 - Traffic signals are on flash – working with DPW to bag signals soon
 - Flex posts are next major milestone – schedule TBD
- Highland Ave Reconstruction
 - Reminder: Highland Ave Street scape was pulled out of Spring Hill Phase 1 scope
 - Customer intercept surveys and individual business outreach ongoing
 - Community engagement process details coming soon this Fall
- Parking Study Task Force Meeting Tues 9/14
- All 1,400 Somerville High School students are receiving pre-loaded M-7 cards for unlimited travel on subway, bus, & Commuter Rail zones 1A-2 this school year.
- Bluebikes memberships are being piloted at no cost for city and school employees (MassDOT Workforce Transportation Grant)
- **Coming Soon:** Fall Bike & Ped Counts, volunteers needed!



College Ave in progress



Powder House Circle in progress