

Michael E. Capuano Field & East Somerville Community School Turf Renovation Projects



Mayor Joseph A. Curtatone
Councilor Matthew McLaughlin

Informational Meeting: June 12, 2019

Warner Larson Landscape Architects

David Warner, Principal

Josh Millonig, Project Manager

Jill Lathan

Director, Parks & Recreation

Ben Waldrip,

Director of Operations, Parks and Recreation

Contact: Luisa Oliveira, ASLA

Senior Planner for Landscape Design

LOliveira@Somervillema.gov

(617) 625-6600 x 2529

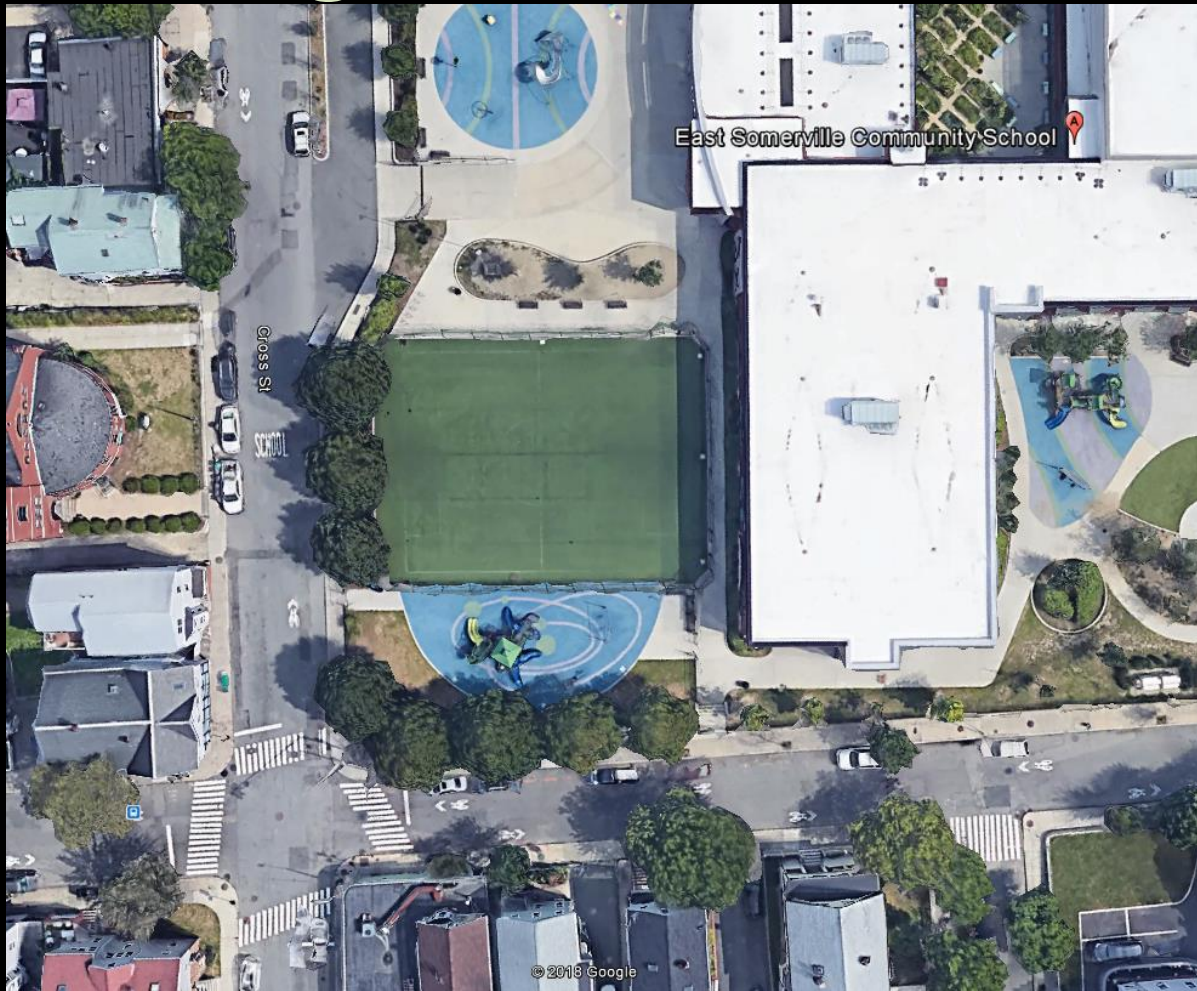
Overview

- Existing Conditions of the Fields
- Field Design
- Materials
- Schedule

Existing Conditions

- Field surfaces in poor condition
- Safety concerns
- Drainage issues
- Lighting

Existing Conditions ESCS



Aerial view

Existing Conditions ESCS



Surfaces in poor condition

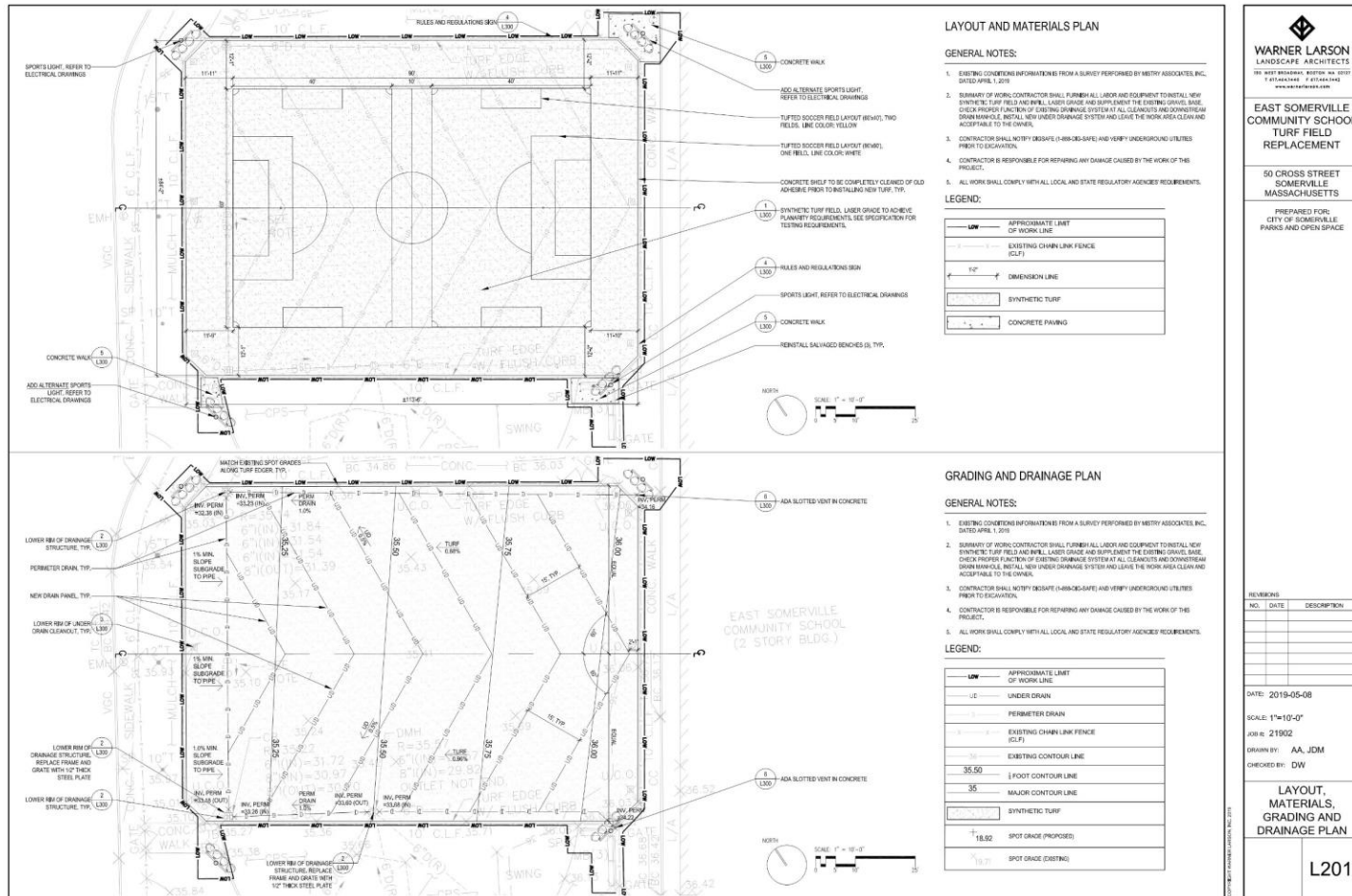


Safety issues



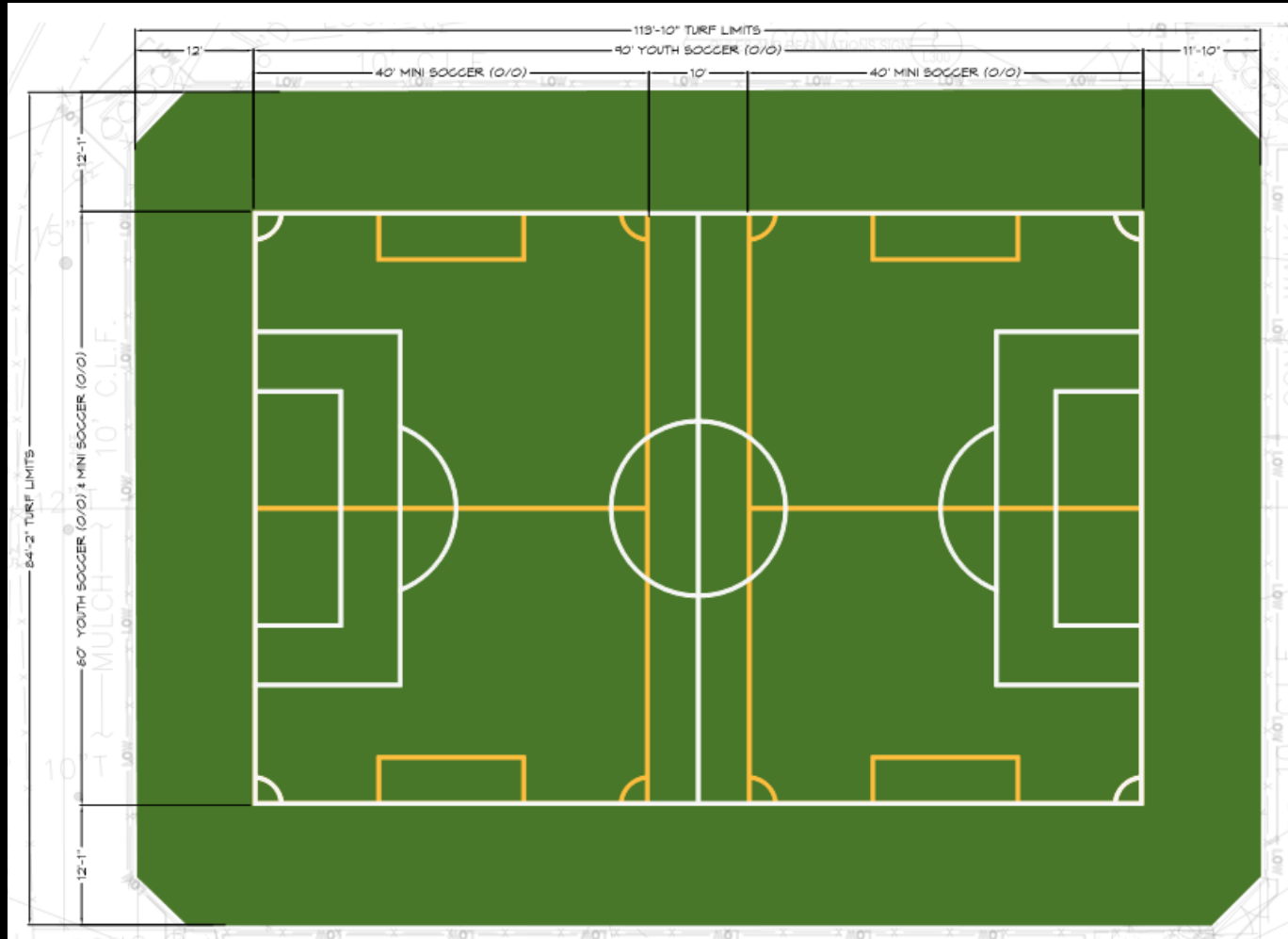
Drainage issues

ESCS Field Design



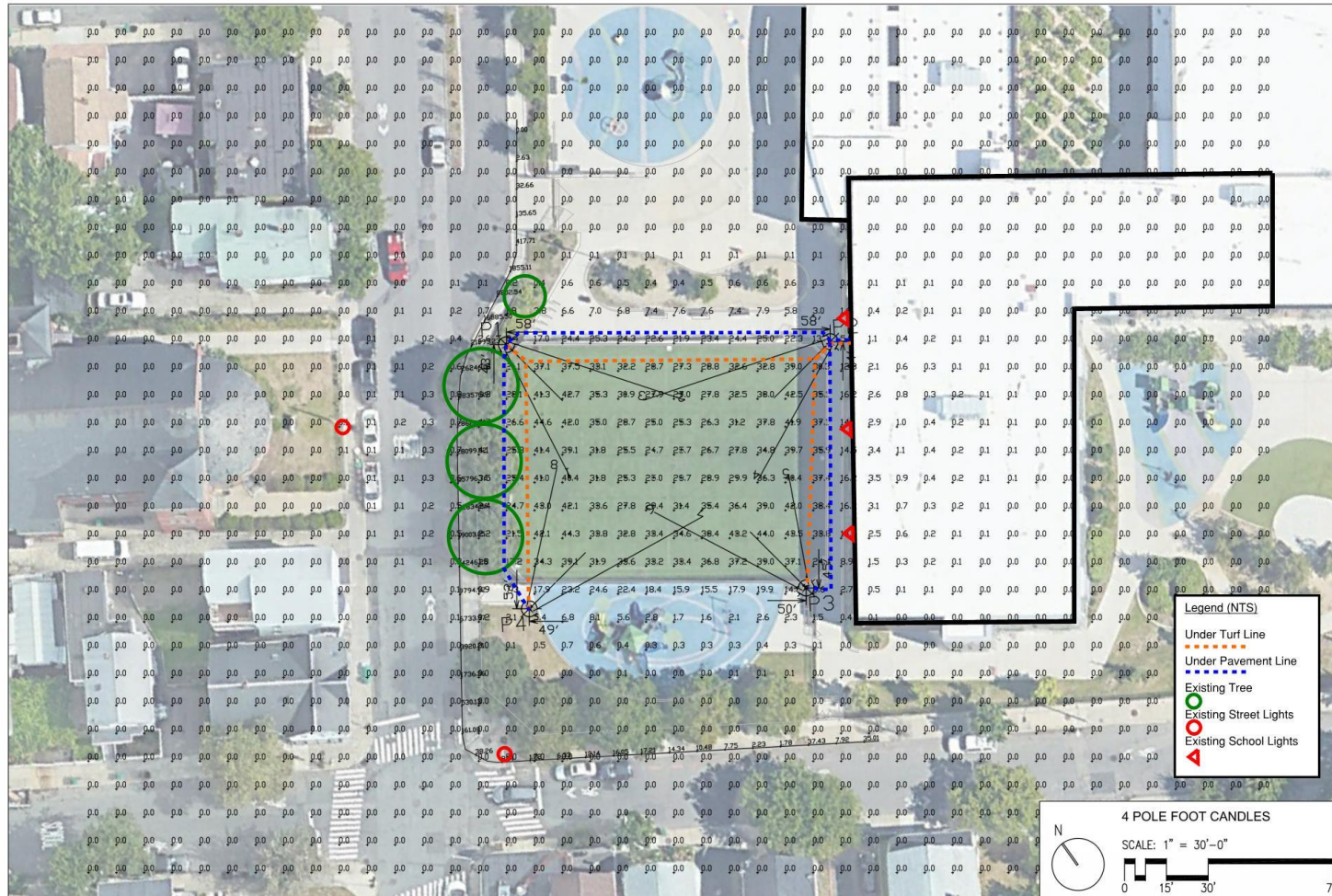
Athletic field layout

ESCS Field Design



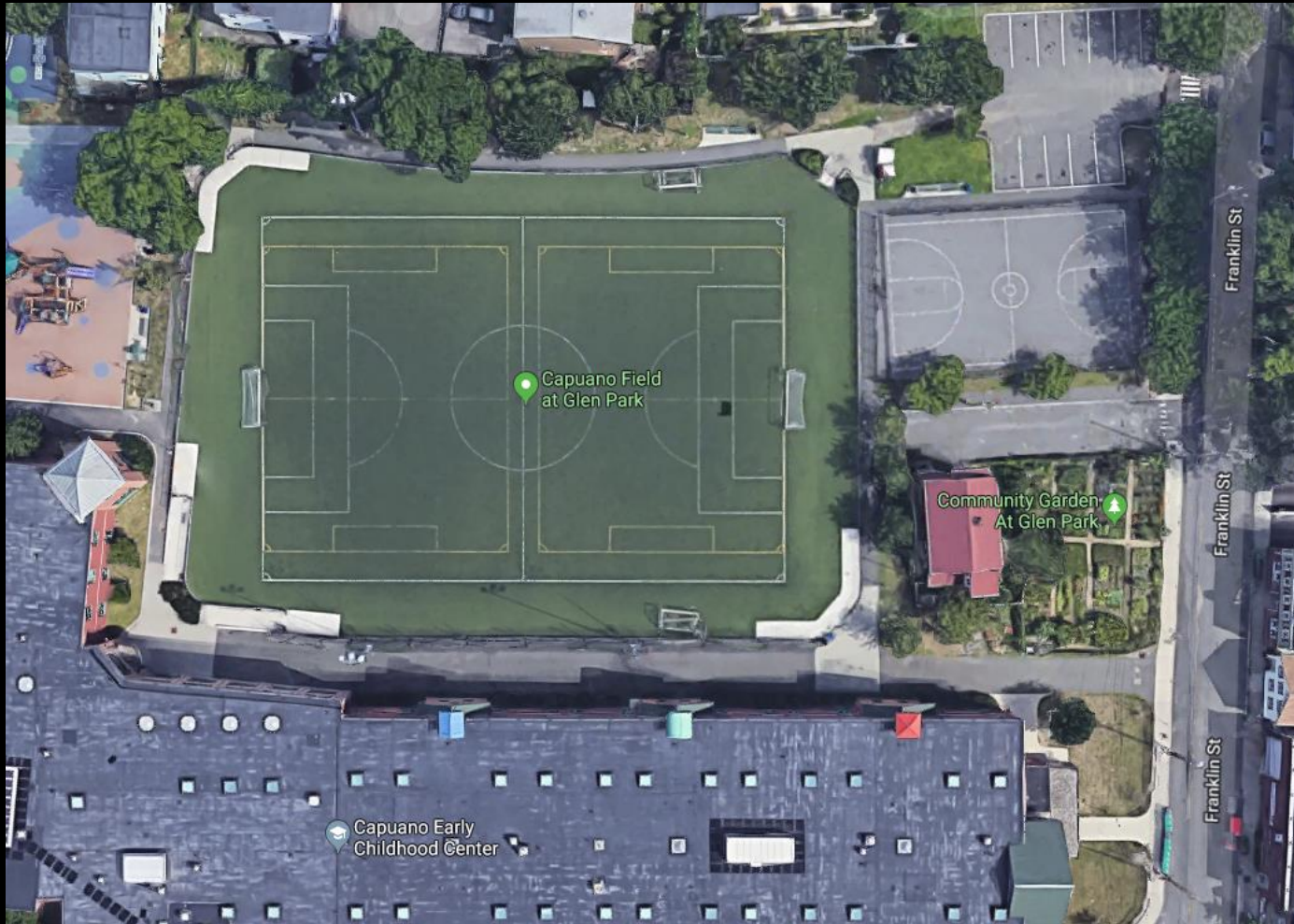
Athletic field layout and striping

ESCS Field Design



Athletic field lighting layout

Existing Conditions Capuano Field



Aerial view

Existing Conditions Capuano Field



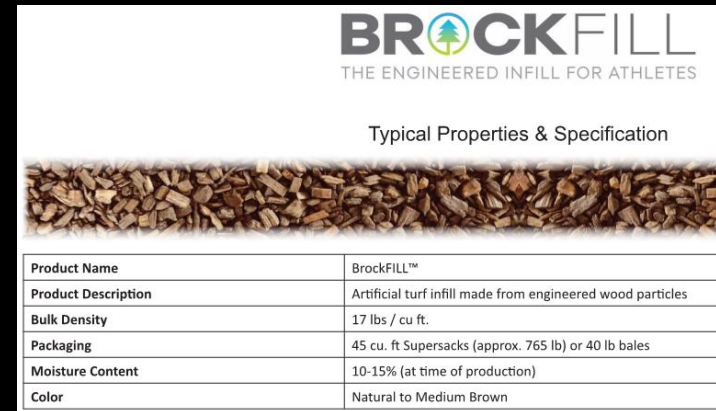
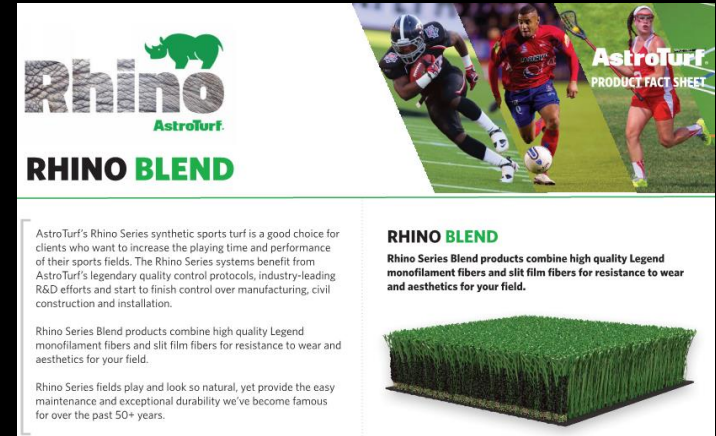
Surfaces in poor condition

[illegible]

Athletic field layout & striping layout

Materials

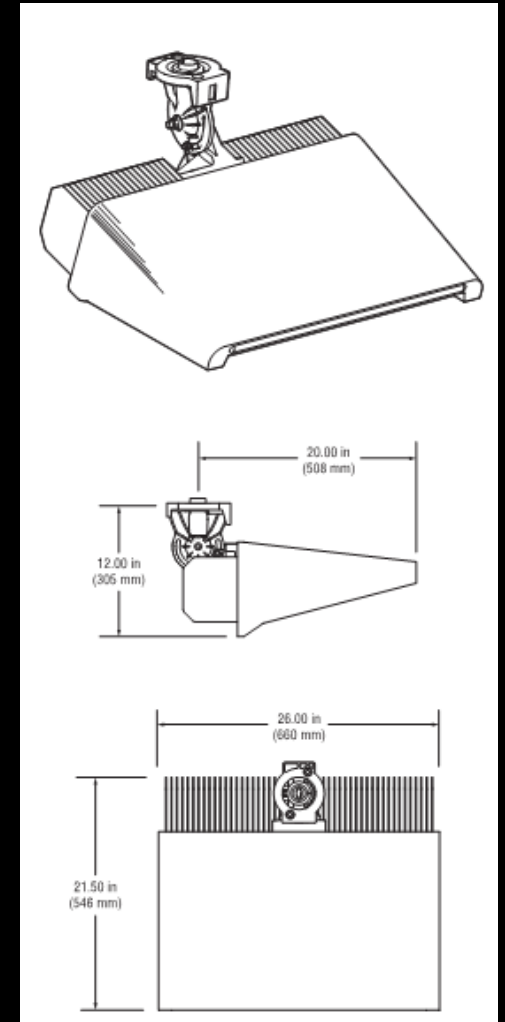
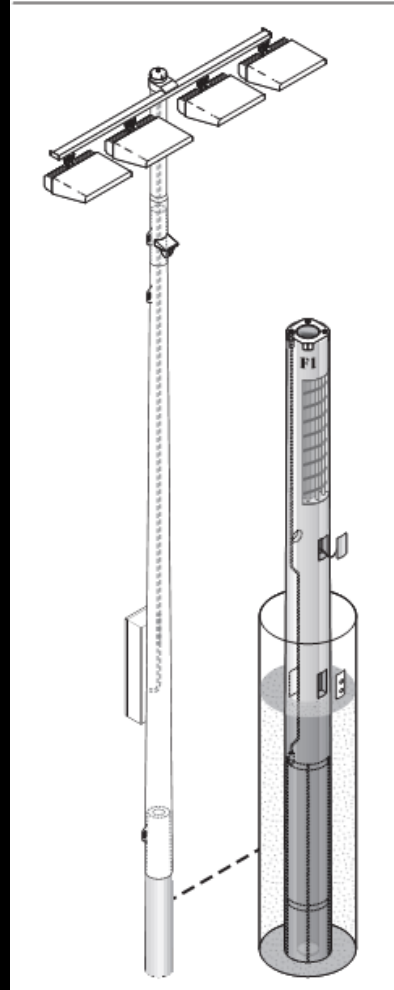
- Synthetic Turf Carpet
 - AstroTurf – Rhino Blend
 - Dual fiber turf
- Synthetic Turf Infill
 - Plant based infill material
 - Sand
- Synthetic Turf Shock Pad
 - 17mm
 - Expanded polypropylene



Materials

- Athletic Field Lighting (Only at ESCS)
 - LED fixtures
 - 40' Pole height

TLC for LED® – Precast Concrete Base



Materials

- Athletic Field Lighting at Winter Hill



Schedule

- June 19 fields closed/construction begins
- August 29 construction complete/fields open

Questions?

Contact: Luisa Oliveira, ASLA
Senior Planner for Landscape Design
LOliveira@Somervillema.gov
(617) 625-6600 x 2529