

FILE LOCATION: p:112100\_wasatch integrated112169\_lf extraction system update 2022 - drawings.dwg 0 - drawings.dwg 0 - project.lf extraction system update 2022 (review set #4).dwg



LEGEND

OPEN DISPOSAL AREA

CLOSED DISPOSAL AREA

DISPOSAL BOUNDARY

PROPERTY BOUNDARY

DESIGNED: XX

DRAWN: XX

CHECKED: XX

DATE: 10-5-22

NO.

DATE

REVISION

0

1/2

1

DRAWING IS NOT TO SCALE IF BAR DOES NOT MEASURE 1/2 INCH

OPEN / CLOSED DISPOSAL AREAS

DAVIS LANDFILL FACILITY

WASATCH INTEGRATED WASTE MANAGEMENT DISTRICT

LAYTON, UT

ADVANCED ENVIRONMENTAL ENGINEERING

789 EAST 80 NORTH, KAYSVILLE, UTAH 84037

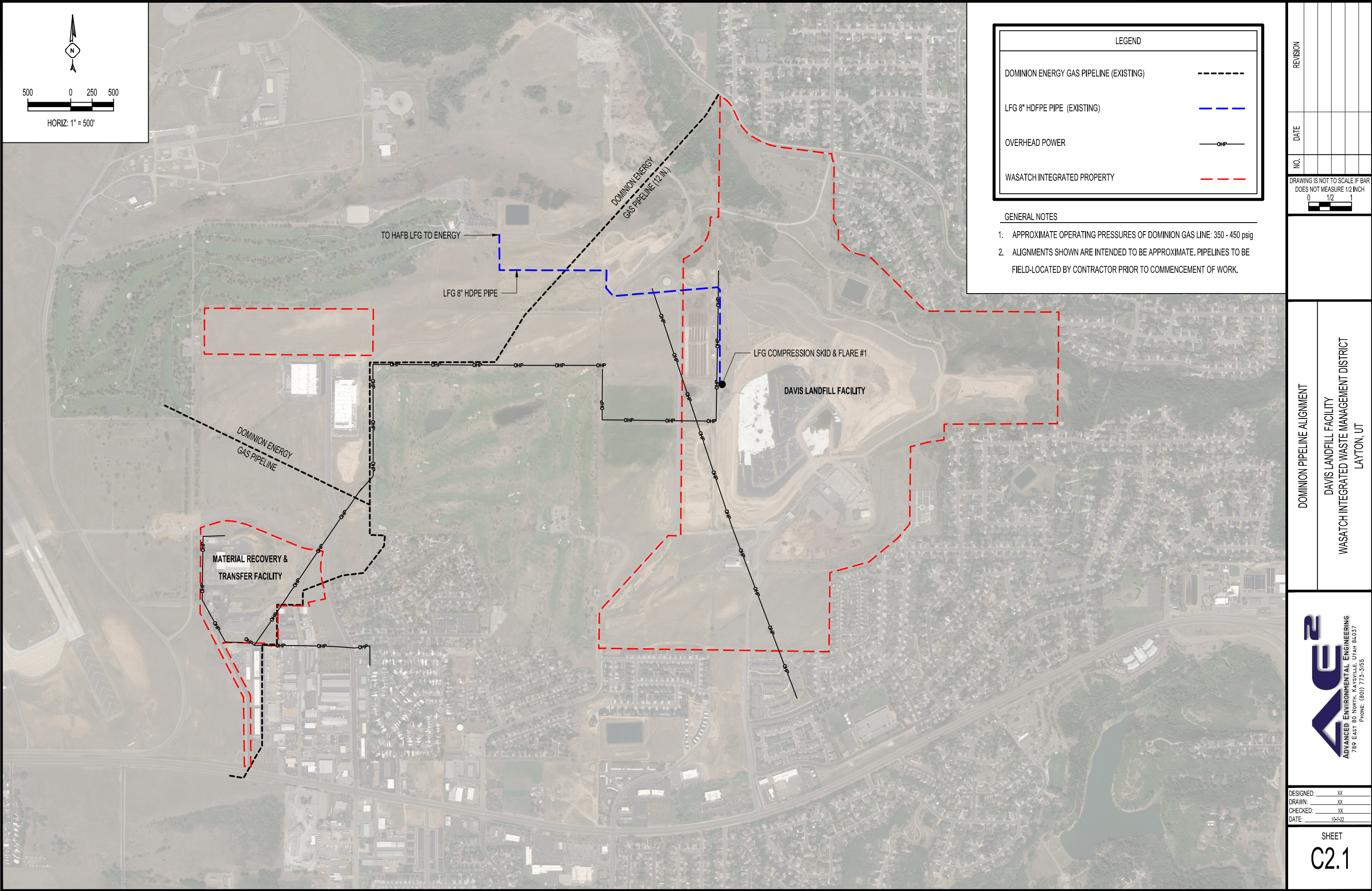
PHONE: (801) 773-5155

SHEET

C1.3



FILE LOCATION: p:12100\_wasatch integrated112169 lfg extraction system update 2022 - drawings\dwg0 - drawings\dwg0 - project\lfg extraction system update 2022 (review set #4).dwg



LEGEND

DOMINION ENERGY GAS PIPELINE (EXISTING)

---

LFG 8" HDPE PIPE (EXISTING)

---

OVERHEAD POWER

—OHP—

WASATCH INTEGRATED PROPERTY

---

- GENERAL NOTES
1. APPROXIMATE OPERATING PRESSURES OF DOMINION GAS LINE: 350 - 450 psig

2. ALIGNMENTS SHOWN ARE INTENDED TO BE APPROXIMATE. PIPELINES TO BE FIELD-LOCATED BY CONTRACTOR PRIOR TO COMMENCEMENT OF WORK.

REVISION	NO.	DATE	

DRAWING IS NOT TO SCALE IF BAR DOES NOT MEASURE 1/2 INCH

0

1/2

1

DOMINION PIPELINE ALIGNMENT

DAVIS LANDFILL FACILITY

WASATCH INTEGRATED WASTE MANAGEMENT DISTRICT

LAYTON, UT

2

AE

ADVANCED ENVIRONMENTAL ENGINEERING

789 EAST 80 NORTH, KAYSVILLE, UTAH 84037

PHONE: (801) 773-3155

DESIGNED: XX

DRAWN: XX

CHECKED: XX

DATE: 10-5-22

SHEET

C2.1