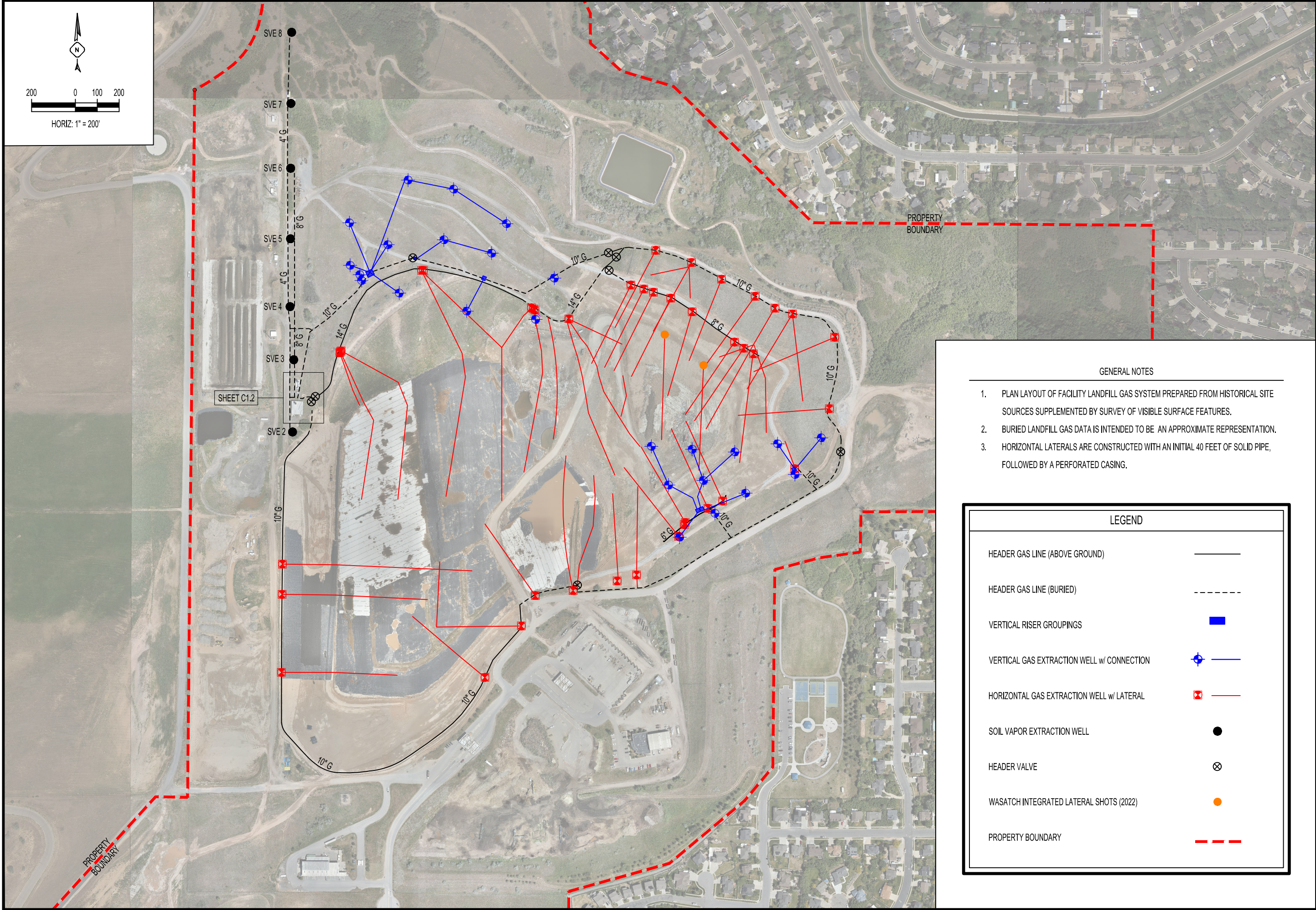


FILE LOCATION: p:12100\_wasatch integrated112169\_lfg extraction system update 2022 - drawings.dwg0 - project\lfg extraction system update 2022 (review set #4).dwg



GENERAL NOTES

1. PLAN LAYOUT OF FACILITY LANDFILL GAS SYSTEM PREPARED FROM HISTORICAL SITE SOURCES SUPPLEMENTED BY SURVEY OF VISIBLE SURFACE FEATURES.
2. BURIED LANDFILL GAS DATA IS INTENDED TO BE AN APPROXIMATE REPRESENTATION.
3. HORIZONTAL LATERALS ARE CONSTRUCTED WITH AN INITIAL 40 FEET OF SOLID PIPE, FOLLOWED BY A PERFORATED CASING.

LEGEND

- HEADER GAS LINE (ABOVE GROUND) —————
- HEADER GAS LINE (BURIED) - - - - -
- VERTICAL RISER GROUPINGS ■
- VERTICAL GAS EXTRACTION WELL w/ CONNECTION ⊕
- HORIZONTAL GAS EXTRACTION WELL w/ LATERAL ⊠
- SOIL VAPOR EXTRACTION WELL ●
- HEADER VALVE ⊗
- WASATCH INTEGRATED LATERAL SHOTS (2022) ●
- PROPERTY BOUNDARY - - - - -

LANDFILL GAS EXTRACTION SYSTEM		NO.	DATE	REVISION
DAVIS LANDFILL FACILITY WASATCH INTEGRATED WASTE MANAGEMENT DISTRICT LAYTON, UT		DRAWING IS NOT TO SCALE IF BAR DOES NOT MEASURE 1/2 INCH 0 1/2 1		
DESIGNED: XX DRAWN: XX CHECKED: XX DATE: 10-5-22		ADVANCED ENVIRONMENTAL ENGINEERING 789 EAST 80 NORTH, KAYSVILLE, UTAH 84037 PHONE: (801) 773-5155		
SHEET C1.1				



FILE LOCATION: p:112100\_wasatch integrated112169\_lfg extraction system update 20222 - drawings.dwg0 - project\lfg extraction system update 2022 (review set #4).dwg

