



www.CentralMichiganApartments.com

CENTRAL LIVING

2025/2026



Table of Contents

- 6, 7 AMG Houses
- 6, 8 Casa Loma Apartments/AMG
- 4, 5 CMU Division of University Engagement & Student Affairs
- 25 CMU University Recreation
- 31 iRIDE Shuttle Routes
- 6, 11 Lexington Ridge Apartments/AMG
- 6, 13 M4 Property Management
- 9, 14 Marshall's College Rentals
- 12, 18 Olivieri Management
- 12, 19 Park Place Apts
- 6, 21 Partlo Property Management
- 9, 22 Quality Apartments
- 10, 15 The Edge @ 1815
- 9, 32 Tallgrass Apartments
- 15, 27 Timber Creek Apts
- 3, 15, 16, 17 United Apartments
- 15, 24 United Houses
- 12, 28 Village at Bluegrass



All advertising in this guide is subject to the Federal Housing Act of 1968 which makes it illegal to advertise "any preference, limitation or discrimination based on race, color, religion, sex, or national origin or any intention to make any such preference, limitation or discrimination."

CM LIFE will not knowingly accept any advertising which is in violation of the law. Our readers are hereby informed all dwellings advertised in this guide are available on an equal opportunity basis.





**FREE
GYM &
WIFI**



**LEASING
NOW!**



FIRE UP!

**For Amenities You Deserve,
LEASE RATES YOU
WILL LOVE!**

1-6

BEDROOMS

**APARTMENTS &
TOWNHOMES**

- Emerald Village
- Hickory Lane
- Jamestown
- Polo Village
- Southpoint Village
- Union Square
- Washington Village
- West Campus Village
- Western Islands
- Westpoint Village
- Yorkshire Commons



CMUAPTS.COM



989.772.2222



Health & Wellness



STUDENT HEALTH

CMU Health provides care and specialty services for CMU students while they are away from home. Our professional medical staff can also work hand-in-hand with your primary care doctor or specialist to manage ongoing treatments and services while you are attending CMU.

Our student health clinics offer routine care, physicals, acute and chronic fitness management, immunizations, allergy injections, gynecological and birth control services, psychiatry services, treatment for sports-related injuries and travel health.

There are two clinic locations for students: Foust Hall Clinic, open year-round (Room 200) and the walk-in only Troutman Hall clinic in the Towers Residence Hall, open during the academic semesters.

For a full list of services and other helpful information, please visit the CMU Health website, www.cmuhealth.org.



CMU COUNSELING CENTER

The CMU Counseling Center supports students with personal concerns that can negatively impact their academic success, interpersonal relationships, health or safety. There is no charge for services.

Services include individual short-term counseling, support groups, workshops and long-term referrals.

To schedule an appointment or learn more information regarding all our services, visit the CMU Counseling Center website, www.counsel.cmich.edu.



CMU FOOD PANTRY

The CMU Student Food Pantry is here to support students who need a little extra help, so they can focus on their academic success. The Food Pantry is open five days per week during the academic year and twice per week during the summer and is located at 1 Algonquin Court, Mt Pleasant, Michigan.

Products include shelf-stable foods, fresh foods, hygiene, cleaning, and some kitchen and school supplies.

For hours and additional information about visiting the Food Pantry, please visit www.cmich.edu/foodresources.



Welcome to Campus



CMU DIVISION OF UNIVERSITY ENGAGEMENT AND STUDENT AFFAIRS: SUPPORTING YOUR SUCCESS

We embrace self-discovery and strive to create a welcoming and safe community where all students can be their authentic selves. Our programs and services cover areas including health and wellness, empowerment and psychological safety, leadership, and engagement as well as holistic development and exploration by creating spaces where every voice matters. We give students the opportunities

to engage in advocacy, cultural enrichment, and perspective-taking through programs and events that celebrate community, such as signature programs like the Klymyshyn Symposium, Conversations that matter, and the Soup and Substance series — all designed to foster connection, conversation, and understanding. Students have many ways to connect with others who share their goals, attitudes and interests. Explore, connect, and build community while you are here:



JOIN A GROUP



**FIND YOUR
HANGOUT SPACES**



**EXPLORE YOUR
IDENTITIES**



**GET TO KNOW
YOUR CAMPUS**



CARE ADVOCATE PROGRAM

Care Advocates are licensed mental health professionals who work in each of the three residential communities. The Care Advocate Program is designed to provide resources, crisis intervention, and proactive prevention efforts to address mental health issues and to act as a bridge to partner office (e.g. Student Disability Services, Counseling Center, Academic Advising).

Additional services include workshops designed to address common challenges for students including stress management, communication, loneliness, and resiliency.

All Care Advocate programs and services are free to CMU students.



CMU CARES

At CMU, we take care of each other. When someone is concerned for a student's health, well-being, and/or academic success, they can submit a Care Report online at: www.cmich.edu/CMUCARES.

When a report is submitted, it is reviewed by a multidisciplinary team of representatives from across campus. Upon review of the report, the team initiates outreach to offer resource information to the student. Care reports are reviewed Monday through Friday from 8 AM to 4:30 PM. **If you are concerned about an immediate safety issue, please call 911 or CMU police at: 989-774-3081 immediately.**



**Partlo Property
Management
WEBSITE**

Partlo Property Management

UNIQUE HOMES: LIKE YOU! We at Partlo Property Management are all about finding you the perfect place to live. Because each person is individually unique, their place of residence should be just as unique to them - and you should love where you live! That's why Partlo Property Management provides reasonable accommodations, a variety of rental options displaying the rent amount, pet-friendly policies, and more! Many of our locations are within walking distance from campus, and we oversee a variety of locations that offer unique choices and competitive pricing. Different amenities are offered across all properties. We offer options such as free internet, on-site laundry, air conditioning, spacious living, etc.

CONNECT with us and let us help you find the PERFECT place to live!

Scan to go to our website!

(989)779-9886

www.partloproperty.com

Apartment Management Group

Casa Loma Apartments

Casa Loma Apartments were built with students in mind. We are within walking distance of the CMU campus, so don't worry about being late for class! We know that as college students, money is tight, so we provide competitive rent plans with our units. Washers, dryers, and dishwashers are available within the units, so you don't have to worry about leaving your apartment to do the laundry or hand-washing every glass you use. Casa Loma offers furnished or unfurnished apartments. What's more, experience large living rooms and walk-in closets! (Psst, we also offer private entrances.) Give us a call or visit during our business hours with any questions you may have!



**AMG
Housing
WEBSITE**

Lexington Ridge Apartments

Enjoy an athletic experience at Lexington Ridge, with a full-size basketball court and sand volleyball. Our apartments are right near the Student Activity Center, so you can always remain fit and active with your friends. University Park is also nearby, so you can go for a hike or bike ride. We offer a variety of apartments ranging from 2 to 6 bedrooms. Furnished apartments and plenty of closet space are available for residents, and we also offer free parking, Wi-Fi, and laundry. For all of you who have a fuzzy friend, Lexington Ridge is also pet friendly. Our features also include water and trash coverage. With free shuttle bus services to campus and custom leases, this apartment was truly made with students in mind. Pay us a visit sometime or give us a call during our business hours, and we will help you with any questions you may have.

(989)773-3890

www.amghousing.com

M4 Property Management



**M4 Property
Management
WEBSITE**

At M4 Property Management, we're dedicated to finding houses, apartments and townhomes to call home and suit your lifestyle. Specializing in off-campus rental housing for Central Michigan University and MidMichigan College students. We offer a wide range of options to accommodate all budgets and preferences.

With over 150 rental properties located near CMU and downtown, M4 Property Management provides diverse options to cater to your needs. From cozy apartments to spacious houses, our selection ensures there's something for everyone. Our team of expert leasing agents and knowledgeable maintenance staff is committed to addressing all your housing needs promptly and professionally. We prioritize the well-being of our residents and the upkeep of our properties, ensuring you experience comfort, security and peace of mind throughout your stay. Welcome home, where you'll truly "love where you live"!

Contact us today

Call (989) 817-4935, (989) 817-4918 or Text (989) 264-1034

www.rentCMU.net

HOUSE + FRIENDS =

Best Memories

NORTH CAMPUS HOUSES

Enjoy college living with your friends in our North Campus rentals. Whether it is 1 person or 10 people, we have the perfect place for you and all your friends. Just tell us what you are looking for - we've got the place to make the best memories!



MEMORY-MAKING COLLEGE LIVING



EMAIL: INFO@AMGHOUSING.COM

CALL 989.773.3890

TEXT 989.244.4336



AMGHOUSING.COM



CasaLoma

BEST VALUE ON THE EDGE OF CAMPUS

- Custom Leases Available
- FREE WIFI
- 24-Hour Maintenance
- Full-size Washers/Dryers
- Large Living Rooms
- Furnished/Unfurnished
- Updated Units Available
- WALK TO CAMPUS

STARTING AT
\$260
MO.

2, 3, 4, 5, OR 6
BEDROOM
APARTMENTS
& TOWNHOMES



EMAIL: INFO@AMGHOUSING.COM

CALL 989.773.3890

TEXT 989.244.4336

AMGHOUSING.COM





**Marshall's
College Rentals
WEBSITE**

Marshall's College Rentals

Marshall's College Rentals takes pride in providing homes that are safe, comfortable, clean and efficient. All of our locations are conveniently located within 2 blocks of campus, right in the heart of off-campus living. We are a responsive and caring team that will go the extra mile to make sure our tenants' needs are met. All units have in-unit laundry, air conditioning, dishwashers and free high-speed Wi-Fi. Flexible, budget-friendly payment plans available. We love our community of students and have been family owned and operated for almost 50 years. Visit our website for pictures and videos of all of the places we have to offer! Leasing for the 2026/2027 school year will start in October 2025!

989-289-7889

www.marshallscollegerentals.com

Tallgrass Apartments

Located just minutes from campus, Tallgrass Apartments offers free internet, pet-friendly policies, in-unit laundry, and 1-4 person accommodations, which includes roommate matching. Feel at home in any of the 2-bedroom apartments or 4-bedroom townhouses that offer 24-hour emergency maintenance. Tallgrass strives to take care of their residents by offering a convenient, comfortable, and affordable experience.

Tallgrass Apartments has a sand volleyball court and a basketball court where you can get competitive with your friends. Connected to the basketball court is a 24/7 fitness center, so you can stay fit and healthy during your college experience. Tallgrass offers a free shuttle to and from campus, eliminating the worry of getting to school. Also provided is free internet and central air conditioning for those hot summer days.

Please reach out with any questions you may have, and our friendly staff will be more than happy to help you. 989-779-7900 or info@tallgrassapts.com



**Tallgrass
Apartments
WEBSITE**



**Quality
Apartments
WEBSITE**

Quality Apartments

"Quality is never an accident, it is always the result of high intention, sincere effort, intelligent direction and skillful execution. It represents the wise choice of many alternatives."

LOCATION, LOCATION, LOCATION!

Located mainly between campus and downtown with the majority on Main Street, Washington Street and University Avenue, Quality Apartments is locally owned and managed by CMU alumni (Fire Up Chips!).

We are a family-owned business in our 45th year in the Mount Pleasant community and are dedicated to providing clean, quality housing. We are a proven and reputable business in the area. Offering 21 units (houses, duplexes and apartments) that are licensed and inspected annually with the city of Mount Pleasant ... one-person to five- person units and our record speaks for itself.

NO hidden fees and NO application fee!

You can't not look! Modern, custom décor for your next home.

989-772-3894

www.qualityapts.com



The Edge at 1815

WHERE CONVENIENCE MEETS COMFORT!

**Your Apartment
Search is Over!**



**Short walk
to campus!**



Pet Friendly!



Free parking!



**All Utilities included
except electric!**

Apply online!

WWW.THEEDGEAT1815.COM





GREAT RATES CLOSE TO CAMPUS

2, 3, 4, 5, OR 6 BEDROOM APARTMENTS & TOWNHOMES

- FREE Laundry
- FREE WIFI
- Free shuttle to campus
- Plenty of closet space
- 24-hour maintenance
- Furnished/Unfurnished
- Semester/Custom leases
- Basketball &
Sand volleyball courts



EMAIL: INFO@AMGHOUSING.COM
CALL 989.773.3890
TEXT 989.244.4336
AMGHOUSING.COM



Olivieri Management

On the search for a comfortable and convenient place to live next year?

Check out all that Olivieri Management has to offer!

Locally owned and operated, Olivieri properties include spacious apartments and houses that range from 2 to 12 bedrooms. Whether you want a living space that's close to campus, near the action downtown or somewhere that's more quiet and secluded, Olivieri has what you need. Amenities vary from place to place, so visit www.om-housing.com to check out layouts, features and an interactive location map. Most Olivieri units are pet-friendly, so bring along your best buds, too!

Have more questions, they are happy to help!

989-773-2333

www.om-housing.com



**Olivieri
Management
WEBSITE**

Park Place Apartments

Park Place offers a location that is both close to campus and downtown at an affordable price. Located on Bellows Street, all Park Place Apartments come with free heat, air conditioning, electricity, gas and water.

The apartments also have a dishwasher, garbage disposal and an on-site laundry service. Are you a cat person? If so, you are in luck, because the complex is feline-friendly!

Park Place also has a 24-hour maintenance staff that makes you a priority. Consider Park Place Apartments when looking for a comfortable, convenient location and high-quality service.

989-772-4032

<https://princetonmanagement.com/communities/park-place-cmu-apartments/>



**Park Place
Apartments
WEBSITE**

Village At Bluegrass

Village at Bluegrass has everything you need when it comes to apartment life. Our goal is to accommodate the various lifestyles of all students by offering a wide range of accommodations. From 2-bedroom/2-bath all the way to 4-bedroom/4-bath, Village at Bluegrass can accommodate you and your roommates comfortably while giving you your desired privacy.

It is amazing how much is included in your rent!

We are a pet-friendly community that offers a 24-hour fitness center, indoor ½ basketball court, free tanning, computer lab and 24-hour maintenance.

To set up a tour or sign your lease:
989-897-0102



**Village At
Bluegrass
WEBSITE**



Houses, duplexes and apartments for rent

- 150+ Properties close to campus
- 1-12 Bedroom Units
- Full-size washer/dryer
- 24-Hour emergency maintenance
- Lawn Care
- Most Units Are Pet Friendly
- Trash Removal
- Flexible Lease Terms
- Snow Removal At Select Units



RENTCMU.NET

 989.817.4935

 989.264.1034



LIVE WELL TODAY

while creating your tomorrow!

- Live on Main Street
- Free Wifi
- Air Conditioning
- In-Unit Laundry
- Ample Parking
- Safe, Clean and Efficient
- Budget-friendly Payment Plans
- Student-friendly Landlord
- Family-owned and operated for nearly 50 years



TEXT OR CALL MICHELLE TODAY! (989) 289-7889



www.MarshallsCollegeRentals.com



**The Edge
at 1815
WEBSITE**

The Edge at 1815

Here at The Edge, we value your comfort. With a property manager on site, a study area for those late-night study sessions, a fitness center, and a controlled access door for extra security, we want to ensure that your stay is luxurious, stress-free and affordable. We are pet friendly with a maximum 2-animal policy.

The Edge is right near Deerfield Nature Park, Downtown Mount Pleasant, Soaring Eagle Casino and Waterpark, and is located within walking distance of Central Michigan University. With so many activities nearby, you'll always find something to do on a Friday night.

You can select from 1-6 bedroom apartments with competitive, budget-friendly pricing. Please give us a call today with any questions.

(989)203-2203
www.theedgeat1815.com

United Apartments

Choosing the right apartment as a college student can be overwhelming, but United Apartments simplifies the process. Offering 1-6 bedroom apartments, townhomes, and houses near campus, United has options for every preference and budget. Whether you prefer a short walk to campus, a spot in the heart of town, or a peaceful retreat on the outskirts of Mount Pleasant, United has you covered. Explore their website for video tours, floor plans, and pricing. All residents enjoy free gym memberships to Morey Courts and McLaren, with free Wi-Fi in select units.

Getting to class is easy with United's free shuttle service from farther complexes, while many locations are within walking distance. Leasing is hassle-free with online applications and electronic lease signing, letting you handle everything remotely. Discover the amenities you want and affordable rates at United Apartments.

Contact: 989-772-2222
Website: www.livewithunited.com



**United
Apartments
WEBSITE**



**Timber Creek
Apartments
WEBSITE**

Timber Creek Apartments

If you're looking for a place to house you and your furry friend, Timber Creek Apartments has got you covered! Timber Creek Apartments is a pet-friendly complex located just minutes away from CMU's campus. Timber Creek offers 1, 2 and 3-bedroom apartments. Amenities include: dishwashers, walk-in closets, high-speed internet access and much more.

Looking for a sense of community? Timber Creek features a basketball court, volleyball court, fitness room, game room and an indoor heated pool so you'll always have the opportunity to relax and meet new people.

Did we mention your rent includes heat, electric, water and trash? If you come in and sign today they'll also cover your application fee.

989-773-3300
<https://princetonmanagement.com/communities/timber-creek-apartments/>

**1-6
BEDROOMS**

Apartments, Townh

AMENITIES YOU DESERVE, LI



PET
FRIENDLY

989.772.2222

Homes and Houses

EASE RATES YOU'LL LOVE!

PICKARD

BROADWAY

M20/HIGH STREET

ISABELLA

11

12

BROOMFIELD

13

14

BLUEGRASS

DEERFIELD



HICKORY LANE

714 S. Oak Street



1019 S. DOUGLAS ST.



888 MISSION ST.



MAIN ST. APARTMENTS

908 S. Main Street



PLEASANT STREET

812 Pleasant & 816 Douglas



POLO VILLAGE

900 S. Douglas Street



WASHINGTON VILLAGE

1020 S. Washington Street



WEST CAMPUS VILLAGE

1116 West Campus Drive



WESTPOINT VILLAGE

2222 S. Crawford Road



WESTERN ISLANDS

1522 S. Mission Road



EMERALD VILLAGE

925 Appian Way



YORKSHIRE COMMONS

1251 E. Broomfield Road



SOUTHPOINT VILLAGE

916 E. Broomfield Road



UNION SQUARE

4175 E. Bluegrass Road



JAMESTOWN APARTMENTS

4075 S. Isabella Road



**FREE
GYM
MEMBERSHIP**



CMUAPTS.COM



APARTMENTS, HOUSES & DUPLEXES!

Live Close to Campus!

Main, Lansing, Franklin, Washington, University & Broomfield

**4 Bedrooms
2 Baths**



805 Main Street

**5 Bedrooms
2 Baths**



1015 Franklin Street

**As low as
\$295 pp**



Heritage Square Apts.

**4 Bedrooms
2 Baths**



809 S. Main Street

**4 Bedrooms
Private Baths**



Pleasant St. Townhomes

- Prices begin at \$275 person/month
- \$0 Security Deposit
- Complexes include trash, water and internet!
- No parking passes!
- Friendly-staff.



**SOME
Utilities Included**



**24 Hr.
Maintenance**



Washer/Dryer



**2-6 Person
Units**

Quality living at affordable prices!



**OLIVIERI
HOMES**

989.773.2333



WWW.OM-HOUSING.COM



WELCOME TO COMFORT

- One bill for Rent, Electric, Gas, Heat, AC, Water & Trash
- Walking distance to campus
- Free tanning and gym membership



1401 E Bellows St.
Mt. Pleasant, MI
(989) 772- 4032





Living OFF-CAMPUS

➤ Be A Good Neighbor

The City of Mt. Pleasant is proud to be home to the students of Central Michigan University and Mid Michigan College. Along with bringing diversity and a unique perspective to our community, college students are a key part of the growth and economic development of Mt. Pleasant. You are not just students, you are residents as well.

Check out this guide to find useful information regarding parking rules, parties, things to do, trash and recycling, and more. We are happy to have you meet here.

➤➤ Parking

Overnight street parking is allowed throughout the city year-round, except for the Downtown area. Downtown street parking is prohibited from 4-6 a.m. year-round. When a snow emergency is declared, all cars must be removed from the streets.

➤➤ Property Appearance

When renting in the City of Mt. Pleasant, the tenant is responsible for the maintenance of the house and yard, including trash disposal, and letting the Fire Department and owner know in writing of any unsafe, unhealthy or illegal conditions. Follow these tips and check with your landlord or rental company to help make your Mt. Pleasant renting experience a positive one.

Inoperative Vehicles

- Inoperative vehicles may be stored in enclosed buildings such as garages. However, outside storage on private property exceeding ten days of any vehicle that doesn't have a running engine, a functioning battery and accessories, and/or is not licensed or insured is prohibited by city ordinance. Covering the vehicle with a tarp is also an unacceptable form of storage.

Yard Maintenance

- Grass and weeds must be kept shorter than 12" during the growing season. Lawns taller than 12" may be cut without notice by the city contractor.
- Check with your landlord or rental company for further guidance on sidewalk maintenance.

Sidewalk Maintenance

- For residential properties, snow should be removed, at the owners expense, as soon as practical after inclement weather.
- All commercial properties are required to keep sidewalks clear.
- Check with your landlord or rental company for further guidance on sidewalk maintenance.

Furniture

- Indoor furniture should not be placed anywhere outdoors. Only outdoor furniture is allowed.

Animals

- A maximum of three dogs or cats over the age of four months are allowed in any city residence.
- Dogs older than six months must be licensed annually in the City of Mt. Pleasant, even if they are already licensed in a different city.
- It is the responsibility of the pet owner to keep their yard and house area free of animal waste.
- It is the responsibility of the pet owner to immediately clean up any animal waste on public property.
- Dogs must be leashed at all times unless in a fenced yard.



CITY CODE ENFORCEMENT PAGE

Seeking the UNIQUE?

We can will help you find
the perfect place to reflect
your personality! !

- Apartments, condos, duplexes and houses
- Multi-family units
- 1-6 bedrooms
- Pet-friendly options
- Great locations



Schedule your tour today!
Scan QR code to visit our website!



PartloProperty.com

(989) 779-9886

306 E. Broadway Suite 2



10 MAIN STREET UNITS



HOUSES DUPLEXES & APARTMENTS



- DIGITAL CABLE & CATEGORY 5 OUTLETS IN EVERY BEDROOM
- WASHERS, DRYERS, AND DISHWASHERS

- 1-5 PERSON UNITS
- 10 MONTH LEASES
- CLEAN, SPACIOUS
- CLOSE TO CAMPUS

- CENTRAL AIR IN SELECT UNITS
- REDUCED RATES IN SUMMER
- VIEW INTERIOR PICTURES ONLINE

WWW.QUALITYAPTS.COM 

600 SOUTH UNIVERSITY, MT. PLEASANT 989.772.3894 NANCY@QUALITYAPTS.COM



Living OFF-CAMPUS

➤ Party Smart

Hosting a party is a big responsibility. If you do decide to host a party in Mt. Pleasant, here are a few things you should know to avoid conflicts with neighbors and police.

Things to Avoid

- Open intoxicants are not permitted on public streets, sidewalks, alleys, vehicles on public roads or vehicles in parking lots, regardless of your age.
- You can be cited or arrested for attending or hosting a nuisance party.
- It is illegal to possess, sell or furnish alcohol if you are under the age of 21.
- It is illegal to furnish alcohol to an individual under the age of 21.
- Use or possession of any drugs.
- Public urination or defecation.
- Fighting or assaultive behavior is not tolerated.
- Knowingly crossing a police line or police zone after being requested to leave is a misdemeanor.
- Loud music and/or noise, which can be heard 50 feet from the property line or from inside a neighboring building.
- Pedestrian or vehicle traffic which obstructs free flow of traffic, including emergency vehicles.
- Violation of the fire code for over occupancy or overcrowding.
- Do not drink and drive. (Uber, Lyft and cab services are available.)

Tips for the host

- Designate a sober contact person to oversee the party and assist police if they come to the door.
- Notify neighbors beforehand with an accurate number of people attending, as well as a contact name and number.
- Contact police and advise them of contact person's name and number.
- Keep people inside of the house or apartment.
- Tent(s) with a square footage in excess of 200 square feet (10' x 20') requires a permit from the City at least (five) days prior to the event.
- The host is responsible for guests during the party may be held liable when they leave.
- Pick up all trash immediately following the party.

➤➤ Fire Safety

Avoid these common housing violations to increase your safety and reduce the risk of fire:

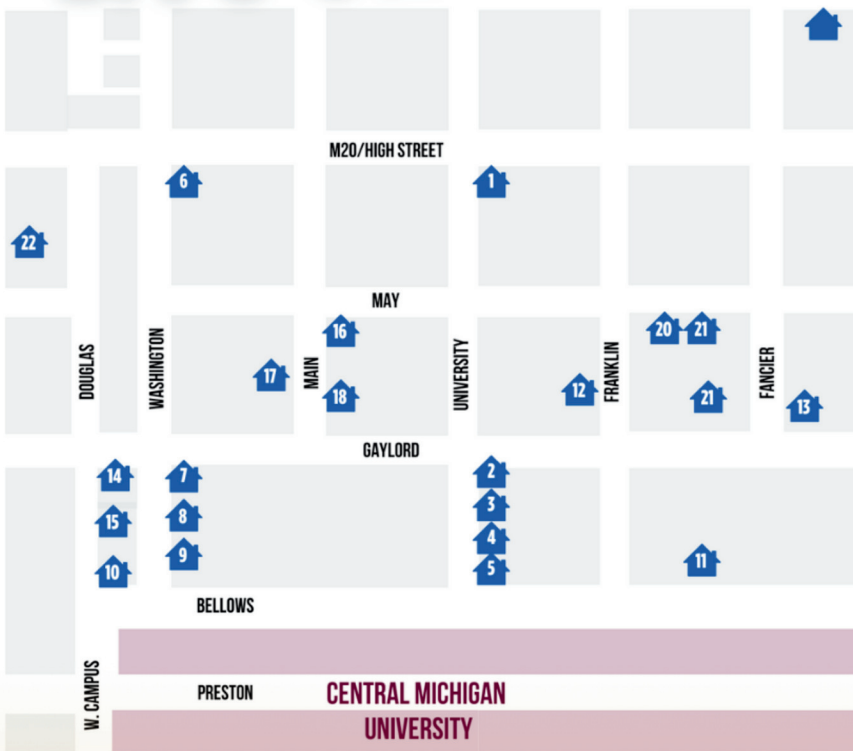
- Loft beds must be installed with 30 inches between the top of the sleeping surface and the ceiling.
- If you have a loft or bunk bed, a smoke alarm must also be present in the room.
- Rooms with no second way out, like those in basements, will be discontinued in use in accordance with the housing code.
- It is not permitted to have combustible material, like trash, accumulate in or outside of building.
- Extension cords may not be affixed to structures, extended through walls, ceilings or floors and may not be used as a substitute for permanent wiring.
- You will be asked to adjust or remove all improperly installed holiday lights.
- Avoid use of hasp locks, as doors must be readily operable without the need for keys.
- The interior must be kept in a sanitary and structurally sound condition.
- Flags, posters and tapestries hung on ceilings are prohibited by the Mt. Pleasant Fire Department.





**2-6
BEDROOM
HOUSES**

Live On The Edge Of Campus



- 1 808 S. University
- 2 1005 S. University
- 3 1007 S. University
- 4 1024 S. University
- 5 1026 S. University
- 6 808 S. Washington
- 7 1002 S. Washington
- 8 1008 S. Washington
- 9 1010 S. Washington
- 10 210 W. Bellows St.
- 11 431 E. Bellows St.
- 12 1004 S. Franklin
- 13 1041 S. Fancier St.

- 14 221 Clayton St.
- 15 1005 S. Douglas
- 16 801 S. Main St
- 17 1018 S. Main St.
- 18 1023 S. Main St.
- 19 1035 S. Lansing St.
- 20 316 W. May St.
- 21 318 W. May St.
- 22 811 Pleasant St.

Call today for next year! The best places go fast!



LIVewithUNITED.COM



989-775-6789





**UNIVERSITY
RECREATION**

CENTRAL MICHIGAN UNIVERSITY

**WELCOME BACK
TO THE SAC!**



**FOLLOW US ON SOCIAL MEDIA FOR UPCOMING
EVENTS, PROGRAMS, HOURS AND MORE!**



Living OFF-CAMPUS

➤ Personal Safety

While on Foot

- Move confidently and be aware of your surroundings at all times.
- Try not to travel alone.
- Plan your route and avoid vacant lots, alleys and deserted areas.
- Switch streets, direction or head to a lighted area if you believe someone is following you.
- Keep your purse and personal belongings close to your body.
- Have your car or house key in your hand before you reach the door.
- Carry only what you need.
- Get to know your neighborhood before walking at night or alone.

While in the Car

- Always lock your car and take your keys with you.
- Check inside and outside of your car prior to getting in the vehicle.
- Keep your gas tank at least $\frac{1}{4}$ full.
- Keep your doors locked while driving.
- After dark, park in a well-lit area.
- Avoid isolated areas.
- Never pick up hitchhikers.

While at Home

- Remain aware of your surroundings at all times and trust your intuition.
- Get to know your neighbors, they can play an essential role in keeping you and your home safe.
- Keep your doors and windows locked at all times, even when you are there.
- Do not answer the door for strangers and confirm legitimacy of police and repair personnel before letting them into your home.
- Make sure your house number is visible from the street to assist fire and police personnel in emergencies.
- No occupant shall access, nor permit access by others, to the rooftop of any structure. Exception: access by property maintenance personnel shall be permitted for necessary repairs.
- Leave a light on when you are away to help prevent burglary.
- Test your fire and carbon monoxide alarms in your home.
- Keep a list of emergency numbers in your home.
- If you feel unsafe or to report suspicious behavior, call Central Dispatch at 989-773-1000.
- Call 911 in case of emergency.

➤➤ Utility Set Up

Set up a new rental account, make changes to an existing account and pay your City utility bills online.

- Scan the QR code to the right to learn how to establish a new rental account or make changes to an existing account. Make sure to talk to your landlord or rental company before setting up your account. Your landlords know what electric and gas companies service their apartment complexes.



MT. PLEASANT
UTILITY SET UP



RELAX MORE. STRESS LESS.

EVERYTHING IS INCLUDED IN YOUR RENT HERE:

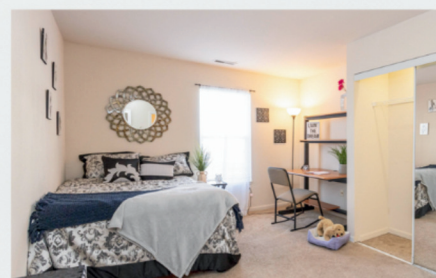
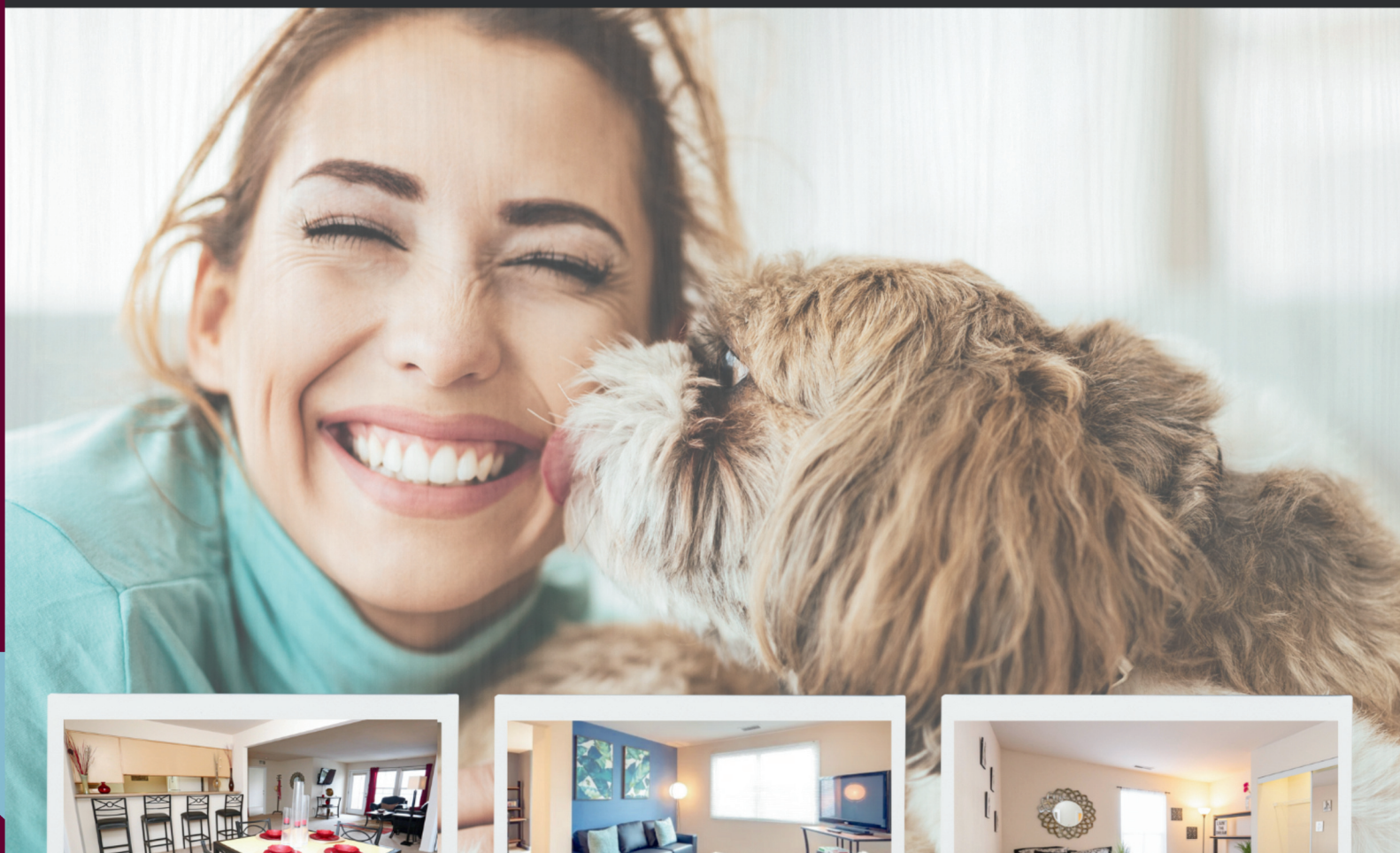
- GAS
- ELECTRIC
- HEAT

- A/C
- TRASH
- WATER
- GYM

**PETS
WELCOME**

**3300 E. DEERFIELD RD,
MT. PLEASANT**





LIVE HERE. LIVE WELL.

- ✓ FREE PARKING
- ✓ PET FRIENDLY
- ✓ CENTRAL AIR

- ✓ CLUBHOUSE
- ✓ FITNESS CENTER

- ✓ IN UNIT LAUNDRY
- ✓ STUDY LOUNGE

- ✓ FREE WIFI
- ✓ INDOOR BASKETBALL COURT

VILLAGE AT BLUEGRASS



Scan
Me

PRINCETON
MANAGEMENT

4300 COLLEGIATE WAY

989-897-0102





Living OFF-CAMPUS

➤ Refuse & Recycling

Refuse and recycling must be placed in the designated pick-up area no earlier than 5 p.m. the day before collection day, and removed by midnight on collection day.

Refuse Guidelines:

- Residents of single family dwellings, duplexes and triplexes are required to use the City's bag/tag system for refuse collection.
- Qualifying multi-family properties may choose to use City refuse carts.
- Residents of rooming houses, multi-unit apartment complexes, or qualifying multi-family properties must make collection arrangements with, and use refuse carts or dumpsters from a licensed waste hauler who is authorized to operate within the City limits.
- City bags and tags may be purchased at City Hall, GreenTree Grocery, Meijer and Ric's.
- Place one tag on each generic trash bag, or on the handle of a 34-gallon or less trash can.
- Trash cans cannot weigh more than 50 pounds and trash may not exceed the top rim of the can.
- There is no limit on the number of City refuse bags or tagged trash cans you may use at

Recycling Guidelines:

- Residents of single-family homes and some rental units are eligible for curbside recycling. A blue City recycling bin is required. These bins can be purchased from the Utility Billing Department located at City Hall.
- Residents of rooming houses and multi-family dwellings may also participate. To find out if you qualify for this service, please contact the Public Works office at (989) 779-5401.
- The current charge for curbside recycling is \$2.50 and is listed as a separate item on your water and sewer bill.
- If your recyclable materials will not fit inside the blue City bin, you may use additional bins or a laundry basket. Do not use cardboard boxes.
- On windy days, place a brick or rock in the bin to prevent it from blowing away.
- **Items not accepted for recycling:** Dog and cat food bags, pizza boxes, or any cardboard which food has had contact, wax or plastic-coated cardboard/boxboard (milk and juice cartons), laundry soap boxes, tape, staples, cellophane envelope windows, disposable plastic gloves, plastic shopping bags, non-transparent glass.

Large Item Pick-Up:

- Non-refundable stickers must be purchased from City Hall and affixed to each item prior to collection.
- Large items must be placed at your trash collection site by 7:30 a.m. on your scheduled trash pick-up day.
- Questions? Call (989) 779-5401

Leaf Collection and Yard Waste:

- The City offers no fee leaf collection services in the Fall. (Late October, November.)
- Rake leaves into low piles into the gutter, do NOT cover storm basins.
- If you live on a boulevard, do not place leaves in the median, place them in front of your home.
- On High and Pickard Streets, where high traffic volume prohibits leaves in the gutter, leaves should be raked onto the rights-of-way, between the curb and sidewalk.
- All other yard waste which includes; grass clippings, garden debris, shrubbery, brush, tree trimmings, and leaves (outside of the Fall leaf collection) should be taken to the Material Recovery Center (MRF) at 4208 E. River Road. (989) 773-9631

Household Hazardous Waste Collection:

- Please contact the Isabella Conservation District at (989) 772-5927, ext. 3 for information regarding household hazardous waste and electronic waste collection services.



MT. PLEASANT REFUSE & RECYCLING
GUIDE and CITY TRASH
COLLECTION DAYS

GREAT OPTIONS. GREATER LIVING.

- NEW LISTINGS DAILY
- SIMPLE NAVIGATION
- FILTERED SEARCHES
- VIRTUAL TOURS
- LOCATION MAP



CentralMichiganApartments.com

OFF-CAMPUS Apartment Stops

EVERY 1/2 HOUR 

to CMU



SCAN & SAVE
TO YOUR PHONE!



MAROON ROUTE

Village@Bluegrass	:21	:51	EVERY 1/2 HOUR
University Meadows	:25	:55	EVERY 1/2 HOUR
Union Square	:29	:59	EVERY 1/2 HOUR
Target			UPON REQUEST
Music Building Lot #33	:42	:12	EVERY 1/2 HOUR
Washington/Ojibway	:44	:14	EVERY 1/2 HOUR
Anspach/Pearce	:45	:15	EVERY 1/2 HOUR
Ronan/Grawn	:47	:17	EVERY 1/2 HOUR
Main St./Gaylord	:48	:18	EVERY 1/2 HOUR
MMC/Doan Center			UPON REQUEST
Washington/Clayton	:05	:35	EVERY 1/2 HOUR
Larzalere	:06	:36	EVERY 1/2 HOUR
Wightman	:07	:37	EVERY 1/2 HOUR
Park Library	:08	:38	EVERY 1/2 HOUR
Music Building Lot #33	:12	:42	EVERY 1/2 HOUR

GOLD ROUTE

SAC/Indian Trails	:13	:43	EVERY 1/2 HOUR
Stadium Mall			UPON REQUEST
TJMaxx			UPON REQUEST
Walmart			UPON REQUEST
Copper Beech	:26	:56	EVERY 1/2 HOUR
The Reserve	:28	:58	EVERY 1/2 HOUR
Jamestown Apts.	:30	:00	EVERY 1/2 HOUR
Broomfield Mall			UPON REQUEST
Music Building Lot #33	:42	:12	EVERY 1/2 HOUR

DEERFIELD

Towers	:15	:45	EVERY 1/2 HOUR
Deming/Edgewood	:16	:46	EVERY 1/2 HOUR
Westpoint Village	:18	:48	EVERY 1/2 HOUR
Lexington Ridge	:25	:55	EVERY 1/2 HOUR
Theunissen Lot#70	:27	:57	EVERY 1/2 HOUR
Commuter Lot #75	:29	:59	EVERY 1/2 HOUR
SAC/Indian Trails	:30	:00	EVERY 1/2 HOUR
Music Building Lot #33	:42	:12	EVERY 1/2 HOUR



989-772-9441



ictbus.com



WELCOME HOME

COMFORTABLE,
AFFORDABLE LIVING IN
CENTRAL MICHIGAN

- Short and Long Term Leasing Options
- 1-4 Bedroom Options
- Upgraded Kitchens & Dining Rooms
- Fully Equipped Workout Facility
- 10,000 SF Indoor Basketball Court
- FREE Shuttle to CMU Campus
- Sand Volleyball Court
- On-site Leasing Office
- On-site Maintenance

PROPERTY FEATURES



1 - 4 Bedrooms



1 - 3.5
Bathrooms

FOLLOW US!

 tallgrassapartments

ADD US!

 tallgrassapartments

 tallgrassapts



989.779.7900

 **TALLGRASS
APARTMENTS**

1240 E. BROOMFIELD St.,
MT. PLEASANT, MI

WWW.TALLGRASSAPTS.COM