

SEATTLE
NORTH COUNTRY

TRUE  PNW



VISITOR GUIDE—2019/20



FUTURE OF FLIGHT



Take the World-Renowned **BOEING TOUR**

800.464.1476 | 8415 Paine Field Blvd, Mukilteo, WA

futureofflight.org





6



12



16

FEATURES

5 GET OUTSIDE

Modern Whale Watching. Puget Sound Express helps us protect and enjoy marine wildlife.

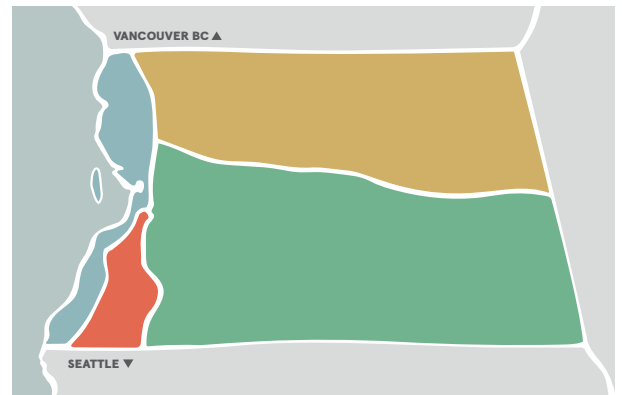
Index—The Gem of the Forest. Launch a whitewater adventure from a tiny historic mining town.

12 ART & HISTORY

Releasing the Forms Within. Tulalip artist James Madison reflects on learning to listen to the wood.

16 FOOD & DRINK

Dining in Urban Basecamp. Strip malls reveal hidden gems—some of the best dining in the region.



REGIONS

21 COASTAL COMMUNITIES

31 URBAN BASECAMP

39 SKYKOMISH—SNOHOMISH RIVER VALLEYS

45 STILLAGUAMISH—SAUK RIVER VALLEYS

RESOURCES

52 HOTELS

58 B&BS & CABINS

61 PARKS & CAMPGROUNDS

62 GETTING HERE

64 AREA MAP

65 VISITOR INFORMATION CENTERS

66 FERRY SCHEDULES

SEATTLE NORTHCOUNTRY

TRUE  PNW

WELCOME,

Tucked between the Cascade Mountains and the Salish Sea, just a few miles north of Seattle, you'll find Seattle NorthCountry. Originally home to the Coast Salish Peoples, the region is steeped in history. From the splash of salmon moving from river to sea, to the silence at the center of an alpine lake to the hustle of seaside cities, Seattle NorthCountry is full of stories.

We're excited you're here, but we do ask one thing—that you be a responsible guest and carefully consider your impact on this place. The Coast Salish people teach us an important lesson—that anytime we make a decision, we should consider how it will impact future generations. How will the choice I make right now affect the people who live on this land hundreds of years from now? While you're with us, we ask that you think in this way.

In that spirit, you'll find a series of notes throughout this guide with tips on being a responsible guest. Please take the time to read and consider those. Thank you for visiting!

- The Seattle NorthCountry Team

Visitor Information Center at Boeing Future of Flight

425-438-8100 x246
8415 Paine Field Blvd.
(I-5 Exit 189 West)
Mukilteo, WA 98275

More visitor centers on page 65

Snohomish County Tourism Bureau

888-338-0976 / 425-348-5802
6705 Puget Park Drive, Snohomish, WA 98296
www.SeattleNorthCountry.com

Made possible by assistance from the Snohomish County
Hotel-Motel Tax Fund

©2019 Milltown Creative Co.
Ad Sales: Visitors Guide Publications

Cover illustration by Sierra Rozario.



CONTRIBUTORS

Richard Porter is an author, copywriter, and freelancer based in Everett, Washington. He has written for regional publications like 1889, the Live in Everett blog, and Scenic WA. Richard enjoys riding his bike and old architecture. He lives in the Snohomish River Delta with his wife and three daughters.

Krista Quinby is a freelance writer and artist with an abiding love of the verdant PNW. Her family skis in the winter, camps in the summer, and explores throughout the months between. Her humorous ramblings about kids, cats, and growing up, can be found on her blog, www.milkandwhiskey.com.

Jake Campbell is a freelance photographer, videographer, and web designer based in the PNW. He photographs weddings, events, and creates digital content for businesses throughout the Seattle region. Jake really loves pizza and vinyl records. You can view his portfolio at www.jakecampbellphoto.com.

Sierra Rozario is an illustrator, graphic designer, and musician based in Everett, WA. She creates hand-drawn and digital artwork for a variety of clients and platforms throughout the Seattle area, and is heavily influenced by vintage cartoons, indie comics, and absurdist humor. In her free time, Sierra enjoys making zines, rollerskating, and playing music. Learn more at sierrarozario.cool.

Get Outside



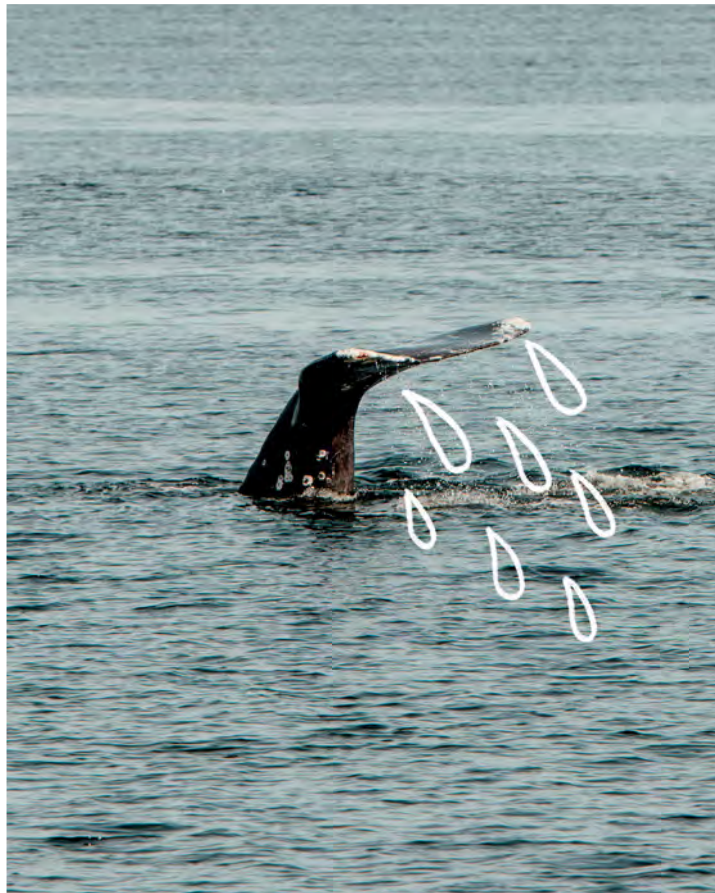


Modern Whale Watching

Mindfulness Meets Science on NorthCountry Whale Watching Tours.

by: RICHARD PORTER

Edmonds, WA. Puget Sound Express is a family whale watching company sailing out of several PNW locations, including Edmonds. For 34 years and three generations, the Hanke family has offered guided tours of the Salish Sea, giving their passengers an up-close view of wild cetaceans: a bucket list experience. To see a gray whale rolling in a placid bay, exposing a fluke is to understand, like sailors of yesteryear, the power of leviathans.



ALL THE DETAILS

When to Visit

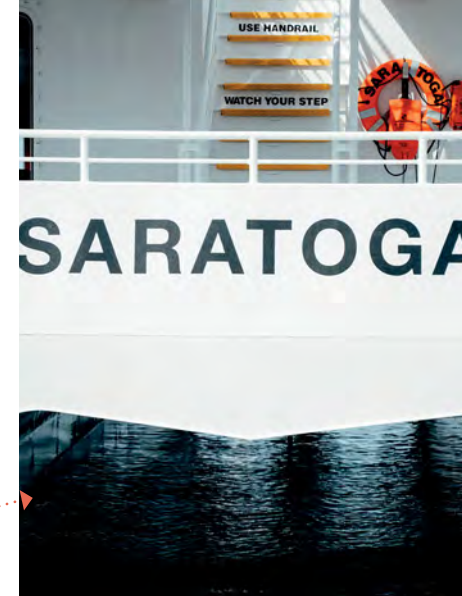
Tours run from February to November.

Tour Length

Tours leaving Edmonds last about 2.5 hours.

Where to Stay

The Best Western Plus Edmonds Harbor Inn is located minutes from the Edmonds Ferry Terminal, and downtown Edmonds (where great food and drink abounds).



The Boats

Puget Sound Express has two sleek hydrofoil boats powered by jet propulsion. The Saratoga and the Chilkat Express (both catamarans) quietly cruise Puget Sound at relatively high speeds (approx. 40 knots), taking passengers on half-day tours. The boats travel as far north as Victoria or the San Juan Islands and return to the Edmonds Marina within a three-hour time window. Their daily route varies, depending on whale migration patterns, but passengers can expect to see Whidbey, Gedney, and Camano Islands, the Cascade and Olympic Mountains, as well as various inlets and waterways.

Whale Sightings Guaranteed

Puget Sound Express has a “guaranteed whale watching” policy—meaning if you don’t see a whale on your journey (it’s rare not to see a whale), they’ll offer you free, no-expiration-date tickets to come back and cruise another time.



Puget Sound Express' boats travel relatively quickly—up to 40 knots. Don't miss the famous homemade blueberry buckle, a family recipe.

Protecting Marine Wildlife

Puget Sound Express painstakingly meets and exceeds regulations on how much space to give to whales. Their posture is that of stewards of nature. They observe “go slow” zones and quietly idle or shut off their engines when a whale is in sight.

“We’re the eyes on the water,” says Sarah Hanke, third-generation whale watcher. The tour boats help to track pod behavior, migration, and feeding habits. A network of scientists and researchers use this information to study whale populations. For example, they’ve been observing a gray whale named “Patch” since 1991. Patch returns to

the same place at the mouth of the Snohomish River in Possession Sound. During the tour, the guides make note of which whales are doing what and where.

This compiled data helps scientists to understand whale behavior. It also empowers whale watching tourists to appreciate just what they’re looking at.

Naturalists on board The Saratoga and the Chilkat act as docents, interpreting what passengers are viewing. These experts break down the difference between resident and transient orcas. They can also tell you about the dining habits of minke, humpback, gray whale species and a variety of porpoises.



SUSTAINABLE NORTH COUNTRY

To help protect our aquatic friends, reduce your use of single-use plastics and always **pack out what you pack in**. Trash ends up in the sea where it can be swallowed by marine life.

When You Go

Besides whales, you’re likely to witness some other variety of abundant Salish Sea marine life: seals, sea lions, or otters. But you may just see a resident orca toss an octopus into the air. Or you may see a humpback calf breaching. Grab a pair of complimentary binoculars and go out on the deck. Expect to keep your eyes peeled for surprises. That’s part of what makes whale-watching with Puget Sound Express great: every trip brings something unexpected. ■

Puget Sound Express

500 Admiral Way, Edmonds
pugetsoundexpress.com
(360) 385-5288

Get Outside

INDEX: THE GEM OF THE FOREST

Deep in the Cascade Mountains, you'll find a tiny mining town where you can escape the city and find some room to breathe.

by: RICHARD PORTER



The first thing you hear when you visit Index is, startlingly, nothing.

Or, more accurately, all you can hear is the soothing sound of white noise.

When you cross the old suspension bridge into town and park your car next to an enormous rusty saw blade—a nod to the town’s history of timber and mining extraction—and step out of your car, there’s nothing to hear. No traffic. No ambient street noise. Nothing except the sound of wind blowing in the trees on the side of Heybrook Ridge and the running water of the North Fork of the Skykomish River.

Then you see the towering wall of granite on the north end of town, a sheer cliff face. The Index Town Wall. It’s then that you get the scope of outdoor recreation on tap here. The hiking on the forested ridges, the kayaking and rafting on the Skykomish River, the rock climbing and bouldering on the Town Wall.

You get why locals describe Index as “the gem of the forest.”

The Past Informs the Future

Index, Washington is a riverside hamlet located on a square quarter mile in a small mountain valley a mile north of Highway 2. Its proximity to the mineral-rich Central Cascades helps explain its existence—120 years ago the town was booming with miners. Photographs from 100 years ago show regional hikers at the top of forested hillocks. Mt. Persis, Mt. Index, and the Heybrook Ridge rise in the back of these photos.

What’s striking, when viewing these historic photos today, is how little of the natural beauty has changed during the intervening century. The construction

cranes and high rises of Seattle, though only an hour away, feel far removed from the quiet forest of the Upper Skykomish River Valley. There are still groves of virgin old growth timber in the canyons that surround Index—a rarity in a region originally populated by loggers.

Today, the economy of Index is based around tourism. Visitors can stay at one of a half dozen BnBs like **A Cabin on the Sky** and walk, bike, or hike to nearby photogenic locations like the **Heybrook Lookout**, **Eagle Falls**, or **Bridal Veil Falls**. They can pitch a tent at **Troublesome Creek** or the **San Juan Campgrounds** and access the nearby Alpine Lakes.

The Corsons

Maybe nobody knows local recreation better than The Corson family of Index. They guide visitors down scenic Skykomish River with their **Outdoor Adventure Center** touring company. The Corsons are active investors in the community of about 200 people, buying and lovingly refurbishing historic properties. **The River House** is the “command center” of Outdoor Adventures. The 1902 chalet-style lodge was in disrepair when Bill Corson bought it in 2007. Now it’s a cozy place to warm up after a day spent on the Skykomish River rapids, with a small bistro, a selection of local cider and





beer, and a fireplace. The lodge decor is mostly vintage recreation gear—a nod to the town's long-standing love of everything outdoors.

Bill's son Blair Corson is restoring the **Bush House Inn** on the north end of town. Blair and his family have been working on the old property since 2011 and should have the place completely remodeled by the Inn's 120th anniversary, later this year. Remodeling a 117-year-old 3-story building is an act of dedicated love, requiring a new foundation, new windows, new siding, and drywall.

The past meets the future with care, investment, and some elbow grease.

The Gem of the Forest

All that quiet. All that history. Such natural beauty and centuries-old stories deserve protection and stewardship. Index and its surrounding environs regularly make "top destination" listicles on social media travel channels. New media attention attracts recreators by the droves, and not everyone who comes to enjoy the area recreates mindfully.

All About Index

INDIGENOUS PEOPLES

Before Western settlement, Index was home to the Skykomish Native American Tribe. They spoke a language called Lushootseed and fished in the Skykomish River.



STRIKING GOLD

A gold rush at nearby Monte Cristo in the late 1800s spurred a population boom and filled Index with hotels housing miners.



HEYBROOK LOOKOUT

Just across the bridge, you'll find a hike that leads to a historic fire lookout with unforgettable views of mountains and valley.



MUSIC

Legendary Pacific Northwest musicians like The Walkabouts and Jerry Cantrell have recorded albums in Index.



ROCK CLIMBING

Rock climbers come from around the world to climb at Index. Details at SeattleNorthCountry.com.

In recent years the Corsons have led efforts to blast graffiti off the rocks at **Eagle Falls**—a place that can best be described as stupidly gorgeous. For years, ATV enthusiasts tore up land at nearby **Reiter Pit**, before the town and local agencies created structured trails and stringent guidelines for ATV use. The message is clear: come here to enjoy the area, but do so mindfully.

The Corsons and the people of Index are invested in protecting this "gem of the forest," keeping it as it appeared a century ago. They view themselves as the stewards of the area. Bill Corson mentions that the North Fork of the Skykomish River draws kayakers from international destinations, and they often remark on the Yosemite-like beauty of the towering town wall.

The beauty here is both a blessing and a moral imperative—Index, the "gem of the forest," is for enjoying, but also for stewarding. The sound of Index always will likely always be quiet wind and water—a beacon of tranquility for tech-raddled masses and travelers looking for respite in grandeur.

Plan Your Trip

Book a rafting tour with Outdoor Adventure Center at: outdooradventurecenter.com. Or call: (425) 883-9039.

Driving directions to Index from Seattle:

Drive N on Interstate 5. Take Exit 194, headed E toward Snohomish/Wenatchee. Stay on HWY 2 until you see the exit on the left for Index, Wa. The exit is at approx. mile marker 35.

For lodging and other info please visit SeattleNorthCountry.com ■



Releasing the Forms Within

James Madison, Storyteller and Craftsman

Master carver James Madison carries a chainsaw through his shop on a weekday morning. He's wearing a Tulalip Red Hawks hooded sweatshirt and leather work boots dusted in curled wood shavings. He's headed to a shed to put a motorized cutting chain to a 998-year-old reclaimed Western Red Cedar.

Inside the studio, long ribbons of cedar shavings are piled on the gravel floor next to a Shop-Vac. Rusty chains are piled in the corner, and a level hangs from a nail on the wall.

This is a place where spirit meets materiality.

Often James Madison works with cedar. But really, he works with almost any artistic material — yellow cedar, glass, stone, bronze, and fabricated metal — honing each medium to accommodate his cultural and aesthetic intuitions. He's one of those rare artists who can hop from media to media effortlessly. Indeed, right now he's working on three pieces in three different locations, simultaneously. Each tells a story.

One definition of genius — being able to hold multiple ideas in your mind at one time.

In the shop, he's honed the old cedar into the shape of a thirteen-foot orca dorsal fin. The "fin" rests on a half-dozen sawhorses underneath scaffold-ing and fluorescent lights.

"The wood is like a spirit or a ghost," Madison says. "It speaks to me. My grandfather used to tell me to listen to the wood." A knot or a warp in the trunk isn't a mistake: it's a form yet to be realized.

At night Madison dreams of what the cedar wants to be, what spirits are in the material trying to be let out.

The next morning he goes to the shed, selects his tools from a leather holster and starts working. I watch him thunk-thunk-thunk with a custom-made adze, slowly defining the domed crest of a sasquatch scalp. Madison is releasing the forms within the material.

He approaches each piece of artwork with a message, even if he only understands that message intuitively at the outset of the project.

"I basically see something and I let Mother Nature take over; I let it tell me what it's supposed to be. It's the way my culture is, the way I was raised."

The spirit of the piece that James is working on in the carving shed today is that of a grandfather Bigfoot. The muscular sasquatch is depicted walking to a river with his two sons. The old Bigfoot teaching them how to catch salmon.

In the cultural tradition of Madison's family, Sasquatch isn't a scared animal running from a video camera. Instead, he's a brother to man, a helper, a conduit of the old ways.

James Madison's cultural heritage is that of the Tulalip peoples. The Tulalip Tribes are comprised of thirteen Northwest Coast indigenous families. The Tribes and their ancestors are a land and wa-

ter-based people, part of a larger group of aboriginal Tribes and First Nations known as the Coast Salish peoples, who live around the Salish Sea in what is now Washington State and the Canadian Province of British Columbia. After the signing of the Treaty at Point Elliot in 1855, the US Government relocated these families to a reservation, north of present-day, Everett, Washington for "education" and assimilation

"The wood is like a spirit or a ghost," Madison says. "It speaks to me. My grandfather used to tell me to listen to the wood."

into white culture. Today, the Tulalip Tribes are a self-governed entity of about 4,000 members.

Almost always personal to some degree, James Madison's stories are most often Tulalip stories, specifically the lore of the Coast Salish/Tlingit Nation.

Growing up, James wanted to be a football player. After a failed attempt to play college ball, James moved back to the Tulalip Reservation. He was unsure what he wanted to do.

He decided to study visual art and media, first at Everett Community College, then at the University of Washington. His main focuses were bronze casting and jewelry classes.

He became absorbed in his studies. To hear James describe it, what he felt was something like a calling. He was supposed to be an artist.

"[I was attracted to] Cubism at school... surrealism, Dali. Van Gogh influenced me the most out of European artists. I was fascinated with Cubism, abstraction, and Van Gogh's colors.

These modern and Western influences add a unique "flavor" to Madison's carvings and sculptures, in which the viewer can pick up elements of cubism and the assemblage of Picasso.

"I studied a lot of different media at the university, [especially] metal fabrication. I cut things out of metal, then welded them together, creating sculptures."

Today, Madison works at a variety of studios and workshops, depending on which project he's working on. Sometimes he works with a chainsaw or adze in a carving shed. Sometimes he "pops up" at regional glass studios. Metal fabrication, bronze casting, and stonework each require different venues and processes for creation.

Madison is widely recognized both regionally and in the art community. He's commissioned to custom-make pieces: carved canoe paddles, maps,

giant sculptures, and story poles for private residences.

"I feel very fortunate," he says of his career. "It's a dream job, a dream occupation. I got a lot of support from my tribe, my people, the county, the city of Everett. I've been very very appreciated and loved. I'm very grateful."

Madison has been on the Snohomish County Art Commission. He's an art advocate, lobbying for sculpture parks, raising money for arts programs. His work can be seen in public sculpture parks, downtown

**"Everything I do
has a story to it,
has information
about my culture,
historical stories,
stories passed
down from my
grandfather to
my father, to me.
Stories so far back
we can't remember
how far back."**

urban sidewalks, and at the Tulalip Hibulb Cultural Center.

But in the end, his efforts are in the service of relaying invaluable truth. He sees himself as a conduit. "Everything I do has a story to it, has information about my culture, historical stories, stories passed down from my grandfather to my father, to me. Stories so far back we can't remember how far back."

His are tales that need to be told. His are forms that need to be released. ■



James Madison Driving Tour

"Mother Earth."

18' driftwood sculpture portrait located on the spot where the Point Elliott Treaty was signed.

*Lighthouse Park,
609 Front St, Mukilteo*

"Kia."

Totemic 135' portrait of Madison's great grandmother, carved from a 998-year-old tree.

*Hibulb Cultural Center &
Natural History Preserve,
6410 23rd Ave NE, Tulalip*

"Diving rock."

Totemic image of a man grappling with an octopus, representing "water power." *Tulalip Tribes Admin. Building
6406 Marine Dr, Tulalip Bay*

"Tulalip People."

Cubed metal sculpture featuring salmon climbing a fish ladder. *Kayak Point Regional Park,
15711 Marine Dr, Stanwood*

"Raven Captures the Sun."

Fabricated metal cube with Tlingit and Salish design motifs. *Centennial Trail, Fifth Street, Arlington*



Madison's depiction of a Snoqualmie tale about how the world was made.



All The Places To Eat

When you're in Urban Basecamp

by: KRISTA QUINBY

For savvy travelers, the smart money stays in Seattle NorthCountry, where less expensive hotel options and a central locale mean more time and money for excursions and for eating out. Those staying in the Urban Basecamp will find an area flush with international epicurean delights waiting to be discovered. Nowhere does the diversity of Seattle NorthCountry show more, or find more appreciation, than in the restaurants we love. Here are **seven secret favorites** that will take your tastebuds around the world, even if you never leave Snohomish County.

1 Casa El Dorado

Washington State is liberally sprinkled with the brightly-muralled, family-friendly Mexican restaurants most folks frequent. For those more interested in the food on their plate than the art on the walls, Casa El Dorado holds a place of reverence. Known formally as Casa El Dorado Mexican Handcrafts and Tortillas, or more casually among locals as “the tortilla factory,” they can be found in an unassuming strip mall on Casino Rd, just off Evergreen Way and Hwy 526. This no-frills spot offers just a few cafeteria-simple tables and chairs, with soccer on the TV providing the only ambiance most diners need. The menu is limited to about a dozen plates and a few soups, but those in search of authentic Mexican staples and a full belly will be well rewarded. First and foremost, Casa El Dorado is a tortilleria, and their flour tortillas are special enough to draw Seattleites into the NorthCountry. For those seeking a fast, fresh and authentic Mexican fill-up, Casa El Dorado is the place to be. Look for the large “Tortilleria” sign in the Casino Square strip mall, and then loosen your belt a few pegs. **205 E Casino Rd Ste B12, Everett**

2 Curries

Spice lovers will find a little slice of heaven in Curries; **a family-run Indian restaurant** tucked away in a tiny strip mall.

Once a mere hole-in-the-wall a few miles from the current location, they quickly grew a reputation for uniquely wonderful dishes and service, and were able to expand into their upgraded space. While a slow, sit-down dinner is a good way to enjoy the famously friendly service, the best deal is the **lunch buffet**. For a reasonable price, you can experience the full range of traditional Indian flavors and fill your belly to bursting. Parking is free but the small lot fills up quickly during the lunch hour at this popular spot. The Curries lunch buffet remains a favorite among those who appreciate perfect naan bread and creamy palak paneer. Food this good will always have a strong following. **7318 Evergreen Way, Everett**

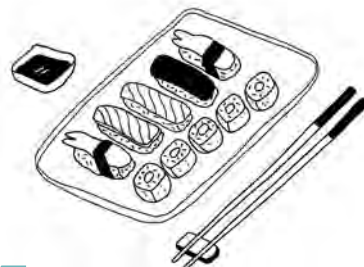


3 Bantaba African Restaurant

A short walk from the Lynnwood Convention Center, but miles away from ordinary, you'll find this **West African restaurant** tucked into a strip mall.

It would be an easy spot to miss if you didn't know what you were looking for, and that would be a shame. While East African restaurants are often easy to find in many larger urban centers, discovering a West African hot spot is a rare treat. The inside of Bantaba is unassuming, with warm colors and a few subtle decorations to give a sense of place. Over the counter, you'll find a large menu with colorful photos to help guide first timers who might not know what they're in for. Bantaba is a delight for meat lovers, who will revel in the Afra Lamb. Don't pass up the black-eyed pea slaw as a side; this salad has a fresh brightness that pairs perfectly with the rich, main dishes. Those seeking the authentic flavors of West Africa should also try the Benachin, an iconic, tomato-soaked rice also known as Jollof rice in other areas, where fierce competitions rage over whose region (or mother) makes the very best. If your NorthCountry travels take you near the Lynnwood Convention Center, don't miss the opportunity to taste a unique style of cuisine you won't often come across. Bantaba is a hidden gem worth seeking out.

19417 36th Ave W, Lynnwood



4 Oshima Sushi

Sushi could be considered a **local staple** in the Pacific Northwest, with our easy access to **exceptional fresh seafood**.

Of course, that doesn't mean all sushi restaurants are created equal. It's easy enough to find good sushi in our urban centers if you're willing to spend an arm and a leg. The true prize, however, lies in finding the secret spot with above par dishes at below average prices and a dedicated, knowledgeable chef. Locals, and quite a few visitors, will tell you that Oshima is just such a place. Oshima is conveniently located in a strip mall off Hwy 99 and boasts plenty of free parking. The space is small, decorated with bamboo and murals of verdant Japanese hillsides. They offer a bevy of staples beyond sushi, including a range of noodle options to make even picky eaters in your party happy. However, Oshima truly shines for devotees of sashimi, who will be pleasantly surprised by the selections as well as the portions. If you luck into this restaurant on a slow evening and you're feeling adventurous, order Omakase and give Oshima the opportunity to dazzle you.

11108 Evergreen Way, Everett

You Should Also Go To The Spa



Lynnwood boasts two Korean Spas that are famous among locals.

Q Sauna and Spa is open to people of all genders. For a pretty low daily fee, you can soak in the sauna all day. Or, sign up for a massage or facial.

Olympus Spa is female-only with a (similar) daily fee model. Note: clothing is not allowed in saunas or hot tubs.

Or, make it yourself



Cooking your own dinner? Shop our top markets:

H MART
Imported packaged goods and ready-to-serve pan-Asian fare.

RANCHO GRANDE MARKET
Latin American essentials, fresh corn tortillas.

IMRANS MARKET
Everything you need to create delicious Middle Eastern meals.

A close-up photograph of a person's hands holding a black bowl of King Noodle House soup. The person is wearing a green jacket over a pink shirt with a yellow pattern. The soup contains white noodles, green vegetables, and a piece of shrimp. The background is dark and out of focus.

5 King Noodle House

Easy to find on the always busy Evergreen Way, nestled beside Evergreen Asian Grocery, King Noodle House is a different kind of Chinese restaurant. A Maneki Neko cat will greet you at the door, but this is not your usual family-style establishment. King Noodle sets themselves apart with a very specific type of cuisine. As the name implies, King Noodle specializes in noodles. Theirs are made on site, hand pulled by the chefs; you can watch them work, pulling and twisting dough into great lengths of fresh noodle for a variety of dishes and made-to-order soups. Design your own soup with the order card at your table, specifying protein, vegetable, broth and, of course, noodle choice. I recommend the vibrant, green spinach noodles. On a cold afternoon when the rain is coming down sideways, there isn't much that satisfies like a giant bowl of steaming-hot noodle soup. While Seattle NorthCountry is richly steeped in Pho restaurants, King Noodle house offers a satisfying, and delicious alternative.

7815 Evergreen Way, Everett



6 Sam Oh Jung Restaurant

Visitors seeking to warm up from the inside out are invited to visit Sam Oh Jung for fresh, gloriously spicy **Korean cuisine**.

Easy to find, sandwiched between Northwest Motor-sport and a QFC right on Hwy 99, with ample free parking, Sam Oh Jung is ideal for a small group lunch or dinner. **Be prepared to share**, as the table will fill with the traditional small plates (Banchan) to delight your senses, and serving sizes are designed to satisfy. Regular diners recommend trying the seafood pancake, or pajeon, which is perfectly crispy and large enough to share between a few friends. And, of course, on a cold, rainy PNW day, you can't go wrong with Bibimbap served sizzling in a hot stone bowl with your choice of protein. The space is cozy and casual, but it can get busy around dinnertime as it's a favorite with locals in the know. Still, service is always prompt and cheerful, with a big red button stationed at every table so you'll never have to seek out your server even on the busiest Friday night! **17425 Hwy 99, Lynnwood**



Take it to the Park.

When the sun shines, eat outside.

Lake Stickney Park has nice picnic tables, a play area, and an off-leash dog park. **13521 Manor Way, Lynnwood**

Forest Park 197 acres of wooded trails, picnic areas, a swim center, a playground & an animal farm. **205 Park Rd, Everett**

7 Rila Bakery Cafe

There's nothing quite like a **perfectly turned out pastry** paired with fresh coffee.

Rila Bakery Cafe offers a fresh twist with an East Asia meets Paris take, bringing unexpected flavor profiles and imaginative combinations. Matcha tea and red bean find their way into cakes here, and bubble tea can be purchased alongside espresso. Located in a strip mall off WA 524, it would be easy to drive right past this slice of pastry heaven. The outside bears a simple, black and white sign, a subtle nod to the minimalist elegance within. With reclaimed wood walls and chalkboard styled menus, Rila would not look out of place on a busy street in Paris or New York. While you can pick up your sweets for the road, and their packaging is as darling and well-designed as the establishment, Rila is a lovely spot to sit and relax while you savor the carefully crafted selections.

7600 196th St SW, Lynnwood ■



SALISH SEA COASTAL COMMUNITIES

Soak in the salty smell of the air while you kayak to a tiny sandy island. Explore rocky beaches, tuck into a cozy coffee shop, and catch your own Dungeness Crab. Wander bustling seaside towns where you can try your hand at glassblowing or create a custom Funko Pop! Visit the Hibulb Cultural Center and learn about the history of the first people to care for this land. Everything in the Coastal Communities is inspired and informed by the Salish Sea—the atmospheric visual art, the fresh-from-the-boat salmon dinners, and the sweeping views of the Olympic Mountains.

VANCOUVER BC ▲

SEATTLE ▼

CITIES & TOWNS



1 EDMONDS

A beachy arts town centered around a community fountain, Edmonds is adorned with murals and is home to a walk-on ferry terminal and underwater diving park. Enjoy cafes, seafood restaurants, and more art galleries and supply stores than you can shake a paintbrush at.

2 MUKILTEO

A seaside city with a historic lighthouse, public waterfront park, and a ferry terminal, Mukilteo is the place to take in island views, grab fish and chips from a walk-up counter or a craft beer at a brewpub.

3 DOWNTOWN EVERETT

Home to toymaker Funko, Jetty Island, and world-famous Narrative Coffee, Everett is an arts-forward community with old working-class mill town grit that is appealing for visitors seeking authenticity.

4 MARYSVILLE

Famous for strawberries, river delta kayaking and a historic downtown, Marysville is worth a visit to sample goods from the charming Third Street merchants and wander along the beautiful Ebey Waterfront Trail that runs along the Qwuloolt Estuary.

5 TULALIP

Home of the indigenous Tulalip Tribes, Tulalip has two casinos (one of which is a four-diamond resort), the Hibulb Cultural Center, and the Seattle Premium Outlet Malls.

6 STANWOOD

Stanwood is a small downtown known for glass-blowing and visual arts and accessible by Amtrak. Kayak Point—a beachfront camping spot—is a popular visitor destination. The Stanwood Hotel, built over a century ago, is a living piece of history.



COASTAL ROAD TRIP

The Seaside Road Trip

The Salish Sea is a dream world, a place where islands float in mirrored water.

It's the perfect place to "unplug" from your workday reality.

Outdoor recreation in the PNW requires access to a waterproof windbreaker and a sense of humor—regardless of the time of year. Both will prove to be important on any trip along the coast.

EDMONDS

Start in Edmonds—an arts community just north of Seattle. Located along the beach, it's good for watching ferries, catching a coastal train, or sipping on a microbrew. But the real attraction is its walkability. The beach town is laid out on a nice scale for pedestrians who want to explore.

SALT & IRON (321 Main St) is a restaurant serving American Northwest comfort cuisine. Here, you'll find cloth napkins, fresh flowers, and the option to dine al fresco on the patio. You can taste the sea here in the fresh air and shellfish.

Try the oysters au gratin, avocado toast with egg sunny side up, and Moscow Mules. Salt & Iron's blackboard lists their oyster farmers—they're not joking around when it comes to fresh bivalves.

Next, you should head to the art galleries. **DRIFTWOOD MODERN** (403 1/2 Main St) is a small gallery filled with curated mid-century modern furniture and art—teak credenzas, watercolors, and walnut coffee tables for your inner Don Draper.

THE COLE ART STUDIO (107 5th Ave S), also a gallery, curates mostly fine local art at a higher price point. "Local art" as in sculpture and paintings by artists who live down the street.

WHAT TO PACK

SEA KAYAK/ CANOE

If you have one and can bring it along, you'll find great places to get out on the water along the way. In Everett, head to the 10th street boat launch and boat to **Jetty Island**—a tiny humanmade island off the coast.

Accessible to the public by a small ferry July–August only, visitors who reach the island via personal watercraft will often have it to themselves during the rest of the year.

ALL-WEATHER GEAR

Even in high summer, wind and rain can appear with little warning along the coast. Be sure to pack a raincoat and warm sweater. If you're headed out on the water, don't forget to pack sun protection.

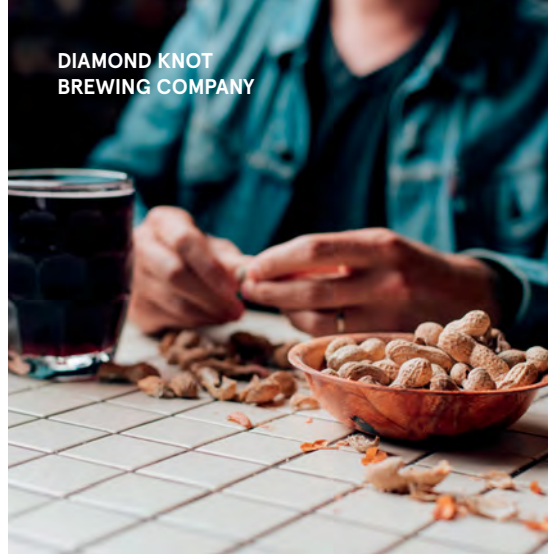
The water reflects the sun's rays and can give you a nasty sunburn when you least expect it.



SALT & IRON



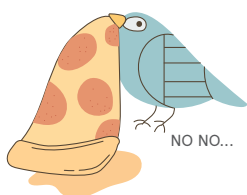
MUKILTEO FERRY



DIAMOND KNOT
BREWING COMPANY



TOGGLE'S
BOTTLE SHOP



SUSTAINABLE NORTHCOUNTRY

To help protect the creatures we share this land with **please do not feed or touch the wildlife.** Human food can harm our furry and feathered friends.

MUKILTEO

Next, head north to the small lighthouse city of Mukilteo. Mukilteo is one of the oldest cities on this side of the Salish Sea, desirable for its deepwater port. The city is best known for its walkable beach park where you can build bonfires, fly kites, or simply sit on driftwood and stare out at the islands of Whidbey and Camano. The lighthouse still works. You can climb a tower to see the lantern up close and get a panoramic view of the stormy Salish Sea.

From the shoreline, you can watch the Washington State Ferries pull out of the docks of Mukilteo. If a ferry ride is on your bucket list, consider walking on the ferry and grabbing coffee on the other side (try the popular **HONEYMOON BAY COFFEE**, located right next to the ferry terminal).

Back in Mukilteo, you'll find **IVAR'S FISH HOUSE** (710 Front St) next to the ferry terminal. Locals appreciate Ivar's as a local treasure; their restaurants have been in the Seattle area for over 80 years.

The walk up counter is good for fish and chips and soft serve ice cream to-go. Luckily the highly walkable and photogenic Mukilteo Beach is a five-minute jaunt away.

In the mood for a beer? Swing into **DIAMOND KNOT BREWING COMPANY** (621 Front St), a gastropub next to the ferry terminal. The Diamond Knot was named after a ship that was wrecked in the Mukilteo Harbor. The shipwreck still lies out there, below the waves.

Try the blackberry cider or mango IPA. The place offers patrons bowls full of complimentary peanuts that they can crack and drop right on the floor.

EVERETT

Everett, a quick trek up the coast, is a former mill city-done-good. Modern culture is taking to the postindustrial downtown like seagulls to french fries.

Downtown is walkable, full of small businesses, restaurants, and historic buildings.

THREE SPOTS FOR WATERFRONT DINING IN EVERETT

1 LOMBARDI'S ITALIAN

An upscale Italian restaurant with a great happy hour and wine selection, and stunning views of the sun setting over the Salish Sea.
1620 W Marine View Dr, Everett

2 BLUEWATER ORGANIC DISTILLING

Classic PNW fare, like grilled salmon, chowder, and fish tacos. Spirits are distilled on-site, and the cocktails are fantastic.
1205 Craftsman Way #109, Everett

3 SCUTTLEBUTT BREWERY

Everett's hometown brewery with a great beer selection alongside burgers, wraps, and the best fish & chips around.
1205 Craftsman Way #101, Everett

BLUEWATER ORGANIC DISTILLING

LOMBARDI'S
italian restaurant & wine bar
Everett Marina - Mill Creek



Comfort Food, Italian Style

**Lunch & Dinner
Happy Hour
Catering & Private Dining**

Everett Marina 425-252-1886
Mill Creek 425-892-2931

lombardisitalian.com

Applebee's
GRILL • BAR

**HAPPY HOUR
EARLY OR LATE**
3PM-6PM & 9PM-CLOSE
FEATURING
**1/2 PRICE
SELECT APPS**

Eatin' Good in the Neighborhood

MARYSVILLE
3702 88th St. NE
360-651-6600

LYNNWOOD
4626 196th St. SW
425-672-2626

Drink Responsibly
Drive Responsibly

Ivar's Mukilteo Landing



Overlooking scenic Possession Sound, enjoy fresh award-winning Northwest seafood in a comfortable, casual setting.

710 Front Street, Mukilteo
425-742-6180

Ivars.com

businesses, restaurants, and historic buildings.

Grab a six-pack of watermelon kolsch at **TOGGLE'S BOTTLE SHOP** (1420 Hewitt Ave). Toggle's has coolers full of over 600 craft beer and ciders. You can fill growlers here, or crowlers (tallboy cans) to go.

For camping grub (or any type of grub, actually) try the **SNO-ISLE NATURAL FOODS CO-OP** (2804 Grand Ave). It's a truly local market that sells produce, cheese, beer and more from local producers.

STANWOOD

Thirty minutes north of Everett is **KAYAK POINT** (15610 Marine Dr), a saltwater park on the edge of the Salish Sea, next to an inlet called Port Susan.

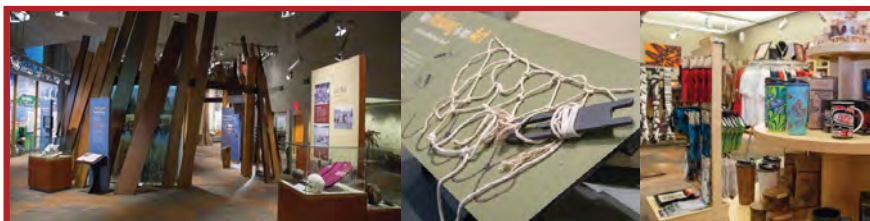
Here you'll find easy access to the majestic Puget Sound. Smell the pungent low tides and see piles of driftwood jumbled up into tangled pyres like abstract sculptures.

For the full rustic seaside experience, spend the night in a yurt. Yurts come furnished with bunk beds, a futon, a coffee table, and electric outlets as well as a fire pit and deck outside. Indoor plumbing and warm showers are nearby.

Hike to the beach down a path filled with fragrant cedar trees. The old growth forest is beautiful—filled with emerald light. Emerge from the treeline and look out over the waves to islands beyond.

If you're ready to head back into civilization, wander north and find Stanwood, a small coastal town that was originally home to indigenous Coast Salish peoples.

Here, you'll find a walkable downtown with locally-owned restaurants and bars. If it's breakfast time, try the **DUCK IN CAFE** (8801 WA-532). For a fancy dinner, head to **CROW ISLAND FARMS** (27008 102nd Ave NW), a rustic fine dining restaurant serving a seasonal menu



Discover the history and culture of the Tulalip Tribes at the *Hibulb Cultural Center and Natural History Preserve* featuring:

- Interactive Exhibits
- Artist Demonstrations
- Rental Spaces
- Group Tours
- Rotating Gallery
- Gift Shop



VISIT US

Hibulb Cultural Center



& Natural History Preserve

TUE-FRI

10AM-5PM

SAT-SUN

12PM-5PM

MON

Closed

HibulbCulturalCenter.org

360-716-2600

6410 23rd Ave NE
Tulalip, WA 98271

PORT OF EDMONDS

Your Homeport Advantage & Choice Destination



Quality • Service • Value • Convenience

425.775.4588 • portofedmonds.org • VHF Ch. 69
336 Admiral Way Edmonds, WA 98020 • info@portofedmonds.org



A YURT AT KAYAK POINT

featuring local farm-to-table goods, seafood and wild game.

Next, head to the **PORT SUSAN BAY PRESERVE**, where you can wander tidepools and find thousands of birds, several species of salmon, smelt, English sole and clams.

WHEN YOU GO

If you're planning to stay at Kayak Point, be sure to reserve your yurt well in advance, during high season they can be difficult to come by.



BEST WESTERN NAVIGATOR

Near Naval Station Everett and Boeing, this aviation-inspired theme hotel with full kitchens was named the No. 1 upper-mid-price hotel brand by Business Travel News readers.

10210 Evergreen Way, Everett
425-347-2555
navigatorsuites.com



STAYBRIDGE SUITES

At the epicenter of Boeing and Washington's northern aerospace industry, this all-suite hotel is designed for extended-stay and leisure travelers who want a lodge-like retreat.

9600 Harbour Place, Mukilteo
425-493-9500
ihg.com/staybridge/hotels/us/en/mukilteo/paemu/hoteldetail



EVERETT AQUASOX

The Everett AquaSox are the Minor League affiliate of the Seattle Mariners located in Everett, Washington.

Hop in for summer fun!
3802 Broadway, Everett, WA 98201
425-258-3673
aquasox.com



VISIT CREATIVE EDMONDS

Designated Washington's first Creative District, downtown Edmonds offers an array of arts to explore—from galleries, museums and art centers to boutiques, culinary delights, festivals, outdoor concerts and third Thursday art walks.

For more information, go to:
www.visitedmonds.com/artsandculture



EXPLORE HISTORIC EVERETT

Tour Everett's historic places including the annual Home Tour and colorful Cemetery tour. Discover self-guided tours of downtown and neighborhoods.

2112 Rucker Avenue #8, Everett, WA
425-293-2767
HistoricEverett.com/events



IMAGINE CHILDREN'S MUSEUM

Where FUN begins and LEARNING never ends! Hands-on indoor and outdoor exhibits for kids (ages 12 months to 12 years) and adults.

Open Tuesday - Sunday, hours vary.
1502 Wall Street, Everett, Washington, 98201
425-258-1006
imaginecm.org



SCHACK ART CENTER

Featuring locally made glass, pottery, jewelry and handmade gifts of art. Open 7 days a week. Admission free.

Hours: M-F 10-6, Sa 10-5, Su 12-5
2921 Hoyt Avenue, Everett, WA 98201
425-259-5050
Schack.org



SCUTTLEBUTT BREWING CO.

Microbrewery with family-friendly restaurant offering steaks, fried fish & homemade root beer on the Everett waterfront.

Restaurant/Pub:
1205 Craftsman Way #101, Everett
Taproom:
3310 Cedar St., Everett
425-257-9316
scuttlebuttbrewing.com



SEATTLE PREMIUM OUTLETS

PREMIUM STYLE. PREMIUM SAVINGS. Exceptional Brands up to 65% Off

Over 125 retailers including:
Banana Republic Factory Store | Burberry | Kate Spade New York | Lululemon | The North Face

Exit 200, Off Interstate 5
10600 Quil Ceda Blvd. Tulalip, WA 98271
premiumoutlets.com/seattle



McMENAMINS ANDERSON SCHOOL

Bothell's first junior high school has been transformed. Sleep in class, drink in the Principal's Office and swim in the Lagoon.

Explore*Discover*Imbibe.

18607 Bothell Way NE
Bothell, WA 98011
425-398-0122
www.mcmnamins.com/anderson-school

COASTAL BUCKET LIST



Seven things you must experience when you visit the Coastal Communities.

❑ **GO WHALE WATCHING** It's easy to get absorbed into the island scenery on a whale watching tour, but keep your eyes on the water for signs of a telltale fluke or waterspout. Guided tour boats whisk you around the photo-perfect Salish Sea—up to the San Juans and back—in search of humpback, orca, and gray whales.

❑ **VISIT THE HIBULB CULTURAL CENTER** The indigenous families that comprise the Tulalip Tribes have lived on the shorelines and waterways of Snohomish County for millennia. They celebrate their heritage at the Hibulb Cultural Center on the Tulalip Reservation. On public display are totem poles old and new, woven cedar artifacts, hand-carved canoes, and interactive exhibits that tell the story of a people and their relationship to the land and sea.

❑ **PUT YOUR FEET IN THE SAND ON TINY JETTY ISLAND** A two-mile stretch of sand, Jetty Island is a manmade breakwater just off the coast of Everett. Open seasonally, and accessible only by civic ferry, the warm waters of "Jetty" are beloved by kiteboarders, beach bathers, birdwatchers, and stand-up paddlers. Be sure to pack sunscreen, shade, and a snack—you'll want to linger all day. Check the summer ferry schedule at www.everettwa.gov/jettyisland

❑ **EXPERIENCE FUNKO** Experience the place where international pop culture phenom Funko makes magic. Their new flagship building in Downtown Everett is located in a converted department store and features larger-than-life action figures, interactive art installations, and more pop culture swag than you can shake a Hogwarts jersey at.

❑ **SHOP AT SEATTLE PREMIUM OUTLETS** Seek luxury goods like designer handbags, sunglasses, name-brand shoes, and accessories—all at reduced prices. An "al fresco" shopping experience makes browsing 130 stores a pleasurable treasure hunt. Refuel with a small meal at one of SPO's bistros, cafes, and lunch spots.

❑ **TAKE A FERRY RIDE** In the Pacific Northwest, even a trip on public transportation warrants bringing a nice camera. View the Salish Sea's islands and waterways



JETTY ISLAND



EDMONDS FERRY

from the deck of our iconic green-and-white ferry boats. On tap: fresh sea air, hot Ivar's clam chowder, local beer, and a classic Washington State photo op.

❑ **WANDER THE COASTLINE AT KAYAK POINT** Recreators rejoice—there's no wrong way to enjoy Kayak Point. This county park's forested seaside ambiance is made for yurt-goers, families, RV campers, casual hikers, and anyone who appreciates an evening barbecue bonfire. Drop in for a day or make a camping reservation in advance at snohomishcountywa.gov/Facilities. For more things to do in the Coastal Communities, visit SeattleNorthCountry.com/salish-sea ■

Everett Farmers Market "Serving Everett and Community for 26 Years"

Sundays 11am – 4pm
May 12 – October 6
615 13th St. Boxcar Park, Port of Everett
Wednesdays 3pm – 7pm
June 5 – August 28
Everett Station, 2333 32nd St.
Local Produce, Fresh Flowers, Baked Goods,
Artistry & Live Entertainment
425-422-5656 everettfarmersmarket.com



VISIT
Everett

EST.  1893

Vancouver

● **EVERETT**

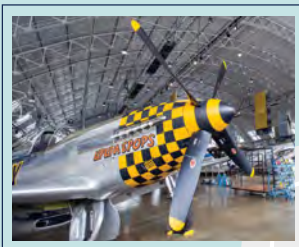
○ Seattle



Sandy beaches for
summer adventures

A walkable
downtown with
good food and
great drinks

Beautiful parks &
open spaces with
amenities for the
whole family



Future of Flight
Aviation Center
and the
world-famous
Boeing tour

ADVENTURE
in *every* direction

▶ **VISIT *EVERETT*.COM** ▶

DISCOVER MUKILTEO

play, stay, dine



Japanese Gulch Trail



Harbour Pointe Golf Club



Four Aviation Museums

hotel discounts at discovermukilteo.org

Visit Edmonds

Treat yourself to art galleries and performance halls, downtown shopping, and scuba diving. Discover whale watching and craft distilling.

Treat Yourself to Edmonds!
VisitEdmonds.com



VISIT
Everett
EST.  1893

○ Vancouver

● **EVERETT**

○ Seattle



Premium
outlet
shopping



Sailing &
swimming

ADVENTURE
in *every* direction



Camping
& hiking



Seattle
day trips



— VISITEVERETT.COM —

URBAN

BASECAMP

Tucked between the Cascade Mountains and the Salish Sea, this urban center is where the world's best airplanes are made. Here, you can take in the magnitude of flight at the Boeing Tour, learn about the night witches at the Flying Heritage and Combat Armor Museum, or see what it feels like to fly at High Trek Adventures. Wander international markets and sample a spectrum of cuisine: tortas, fresh tortillas, rice noodles, sushi and Korean barbecue. Take day trips to the mountains or the sea, soak away sore muscles in a Korean spa or treat yourself to some retail therapy. Urban Basecamp is a hub for adventure in any direction.



CITIES & TOWNS



1 MOUNTLAKE TERRACE

A close-knit, friendly community that boasts over 260 acres of recreational attractions including parks, trails, playfields, golf, fishing, boating, Olympic-sized ice rink and public open space. The Town Center has two breweries and the iconic Double DD Meats, Seattle's premier meat market and specialty foods. The Recreation Pavilion and community center houses an indoor swimming pool, playground, racquetball courts, spa, sauna, espresso stand, rental facilities and more.

2 BOTHELL

Wander riverside trails, and visit a historic downtown for bakeries and boutiques. Bothell

is the place to get a lazy weekend morning coffee at a relaxed pace. Hop onto a bicycle to zip to nearby wine country or spend the day strolling the Sammamish River.

3 LYNNWOOD

A hotspot for shopping and international dining, fifteen minutes north of Seattle. Home to comfortable accommodations and spas within striking distance of the Salish Sea and the Cascade Mountains. Lynnwood is a place you can stay comfortably, with all needed amenities within a tight radius of your lodging.

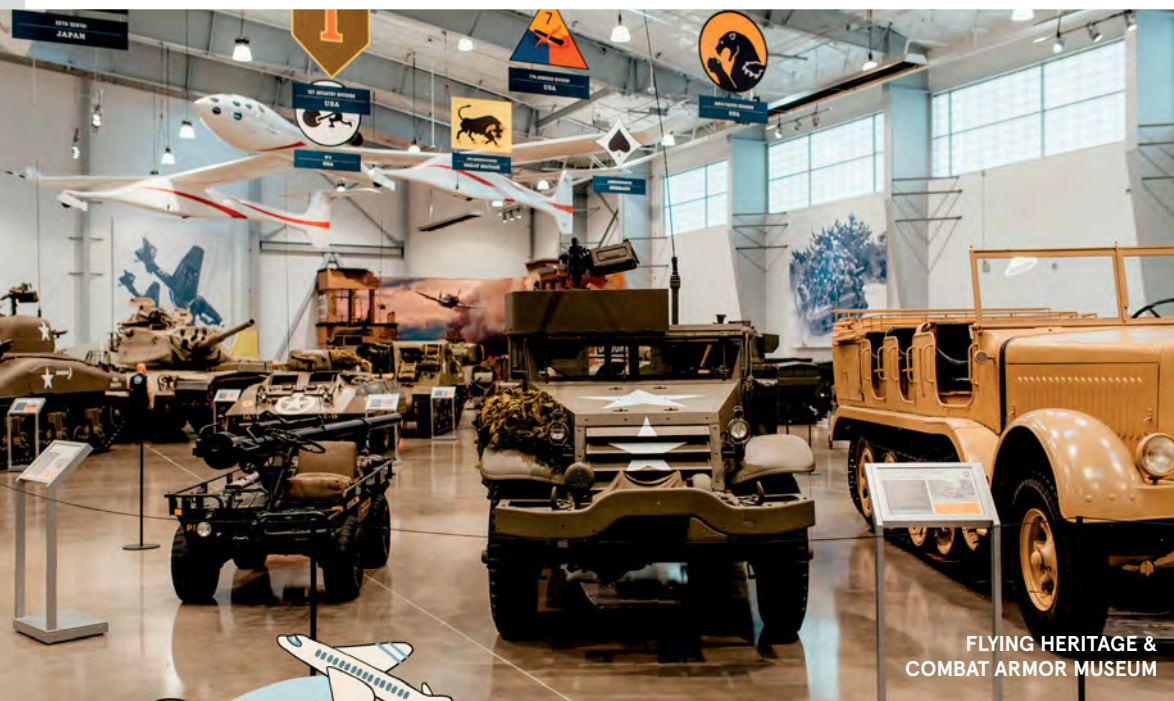
4 MILL CREEK

The Mill Creek Town Center and accompanying nature trails make for a day

of walkable shopping or an evening of fine dining. Wine shops, health food stores, and the University of Washington Bookstore invite visitors in for relaxed exploration. Nearby Arena Sports offers family-friendly recreation in the form of bouncy houses, laser tag, and pizza.

5 SOUTH EVERETT

A culturally-diverse place to get strip mall dim sum, authentic gyros, or handmade noodles. Shop at the Everett Mall or visit the Aviation District for a glimpse into the region's storied aviation history. South Everett is home to the tour of the world's largest building—Boeing's assembly plant.



FLYING HERITAGE & COMBAT ARMOR MUSEUM



BASECAMP ROAD TRIP

The Aviation Loop

Adapted from a story by Lara Dunning.

In Urban Basecamp, you can visit five world-class aviation attractions in a single weekend.

DAY 1

FLYING HERITAGE & COMBAT ARMOR MUSEUM

3407 109th St. SW, Everett
flyingheritage.org

Your first stop is the Flying Heritage and Combat Armor Museum. As you tour the

world's largest collection of vintage aircraft and tanks at Flying Heritage & Combat Armor Museum, marvel at their historically detailed restoration. Almost all of the 24 airplanes and 25 vehicles are rebuilt to working condition, and "ready to fly" and "ready to roll." The collection, acquired by the late Paul G. Allen, is housed in two large buildings and rotates, so you might see something new each time you visit.

Be sure to check out the planes with a unique story—like the Polikarpov U-2/Po-2 flown by Russian women nicknamed the "Night Witches" who frequently conducted night raids on German soldiers during WWII. Designed as a crop duster, they made daring night raids during bombing runs and gave the Germans many sleepless nights. The Focke-Wulf Fw 190 A-5, a German plane known for its speed and lightness. In 1954, the plane crashed in a Russian wetland and remained hidden for over 30 years. Today, it is the only one of its kind with an original engine. Another is the de Havilland D.H. 98 Mosquito T.Mk III, which is made primarily of wood and became one of the fastest and most versatile aircraft in WWII. This artifact made an appearance in the 1964 British film 633 Squadron.

Another highlight is the "Why War: The

WHERE TO EAT

LUNCH

Take advantage of the lunch menu at

DIAMOND KNOT BREWERY & ALEHOUSE.

Try the Thai Chicken salad, cinnamon ginger beignets, a giant tater tot stuffed with bacon and cheese, and a blonde beer.

Other tasty items include a BLT, Porter pork sliders, and beer-battered cod.

Afterward, visit

MUKILTEO CHOCOLATE

for ice cream or handcrafted chocolates like their award-winning lavender cheesecake truffles.

DINNER

In the summer, grab a seat on the outside patio at **THE SCOTSMAN**

BISTRO, a cozy restaurant with Scotch flights and a Scottish owner that warmly greets everyone. The menu is a mix of comfort foods and includes yummy Scottish dishes and a very popular enchilada.



BOEING FUTURE OF FLIGHT

SUSTAINABLE NORTHCOUNTRY

Pets are welcome at many places in Seattle NorthCountry, but **please be sure to pick up after your dog.** Don't ruin someone else's day.



Cause and Conflict" exhibit. Here, you can practice your political savvy at the conflict simulators and be confronted with the sobering tragedies of war at the full-scale replicas of the atomic bombs dropped on Hiroshima.

"The "Why War" exhibit was designed not to tell people why wars happened, but to let them figure it out for themselves," said Michelle Donoghue, Marketing & Events Coordinator. "This gives visitors a more interactive and fun way to experience history rather than reading about past events from a textbook."

This is not a museum to rush through, as there are plenty of fascinating artifacts alongside the displays, like a flag flown on D-Day, an Enigma machine, and a replica of SpaceShipOne. Docents are often there to answer questions, and some have even manned these mighty machines.

BOEING FUTURE OF FLIGHT

8415 Paine Field Blvd., Mukilteo
futureofflight.org

Next on the list—Urban Basecamp's premier aviation attraction, Boeing Future of Flight. Here, you'll get to join the 320,000 annual visitors who experience the 90-minute Boeing Tour and see Boeing 747, 767, 777, and the 787 Dreamliners as they're being assembled in the factory. *Tip: Required height for youth is four feet. The tour is hands-free, and no cameras or phones are allowed.*

The factory building is the largest in the world (by volume). It is so big that Disneyland could fit inside it and still have 12 acres left over for parking! With 35,000 employees this location operates like a mini-city. It has its own fire department, security service, and bank, multiple cafeterias, day care services, shuttle service and tricycles to ride around the massive complex.

WHERE TO STAY

The **Hilton Garden Inn North Seattle** is located right next to Boeing Future of Flight.

The modern hotel has plenty of amenities including a pool, fitness room, free WiFi, and complimentary hot buffet breakfast in the morning.



HIGH TREK ADVENTURES & ZIPLINES

The first four doors are the size of a football field, and the last two doors also include the end zones. As you tour the building, you'll gaze down at the planes in various stage of assembly.

Coming soon: Boeing Future of Flight will open a new gallery in summer 2019. For details, visit futureofflight.org.

DAY 2

MUSEUM OF FLIGHT RESTORATION CENTER & RESERVE COLLECTION

2909 100th St. SW, Everett
www.museumofflight.org

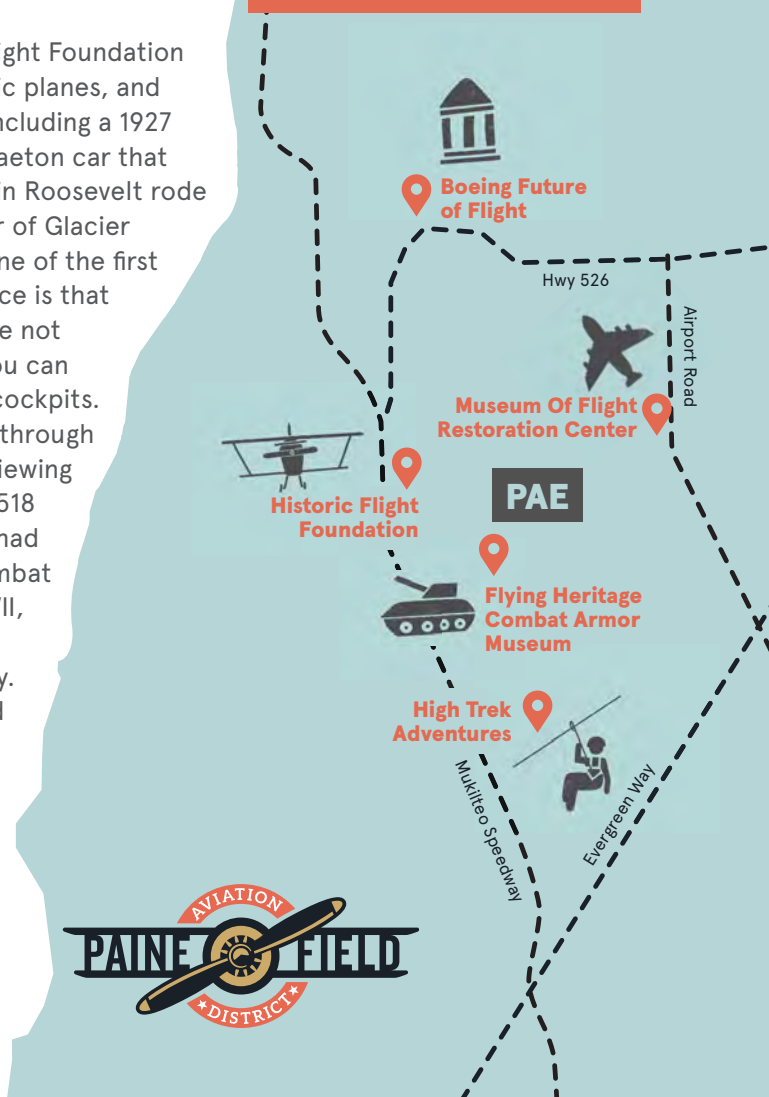
Plane restoration includes many working parts, and at the Museum of Flight Restoration Center & Reserve Collection, visitors get a glimpse into that process. The museum has around 30 dedicated volunteers who restore aircraft to be static exhibits at The Museum of Flight in Seattle. On the Restoration Tour, you'll learn about their projects, like the Havilland D.H. 106 Comet, Mexicana Airlines first jet airliner, a Piasecki H-21B Workhorse, a rescue helicopter nicknamed a "flying banana" from Elmendorf Air Force Base in Anchorage, Alaska, the Link Trainer, a simulator for training pilots, used heavily during WWII.

HISTORIC FLIGHT FOUNDATION

10719 Bernie Webber Drive,
Mukilteo
historicflight.org

The Historic Flight Foundation houses 13 historic planes, and a few vehicles, including a 1927 Cadillac Tour Phaeton car that President Franklin Roosevelt rode in during his tour of Glacier National Park. One of the first things you'll notice is that their artifacts are not roped off and you can peer inside the cockpits. Weave your way through the collection, viewing plans like the P-51 Mustang, which had 700 hours of combat flying during WWII, including four attacks on D-Day. Then hop aboard the Douglas DC-3, a Pan American plane that delivered supplies in China and later became a VIP aircraft for Johnson & Johnson.

PAINE FIELD AVIATION DISTRICT



During the summer, the museum has monthly fly days with flying presentations, ride flights, a BBQ, and a drawing to win a ride in a vintage aircraft. And, for those who want more flight time, certain membership levels include a flight on one of the historic planes.

HIGH TREK ADVENTURES & ZIPLINES

11928 Beverly Park Road, Everett
hightrekeverett.com

At the end of your journey, take to the skies, but not on a plane. Instead, wobble on rope bridges and brave balancing 50 feet off the ground at High Trek Adventures & Ziplines. This ropes course has over 60 challenges, three levels of difficulty, and the course is completely self-guided. For those who don't love heights, try the 18-hole miniature golf course or get a group together and play laser tag. ■

LYNNWOOD

WASHINGTON

Stay here. Play here. Shop here



Just 16 Miles North of Seattle and Minutes from
 Beaches, Mountains, Wine Tasting, Casinos and More

- **Legendary Shopping at Alderwood**
- **Lodging 40% less than Seattle** • **Free Parking**



Start here
 LYNNWOOD WASHINGTON

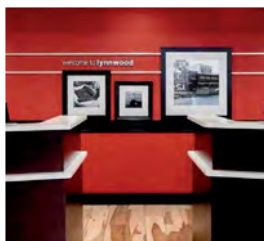
LynnwoodTourism.com Or Call (800) 662-2044



McMENAMINS ANDERSON SCHOOL

Order drinks in the Principal's Office, eat burgers in The Woodshop, feast on farm-to-table specialties at The Tavern on the Square. Indoor/outdoor seating available.

18607 Bothell Way NE
 Bothell, WA 98011
 425-398-0122
mcmenamins.com/anderson-school



HAMPTON INN & SUITES BY HILTON

Located at the intersection of I-5 and I-405, Hampton Inn & Suites offers newly renovated accommodations including apartment-style suites and fully-equipped kitchens.

19324 Alderwood Mall Parkway, Lynnwood
 425-771-1888
hamptonseattlenorth.com/en-us



TRAXX RACING - MUKILTEO

Traxx features fast indoor go-karts for ages 11 - adult; and offers an upstairs track for kids age 3-10, who drive our specially-designed kids karts.

4329 Chennault Beach Road
 Mukilteo, WA 98275
 425-493-8729
www.traxxracing.com



WYNDHAM GARDEN HOTEL

Located I-5, Exit #206 in Smokey Point-Arlington, you will discover an upscale property designed with today's business and leisure travelers in mind.

16710 Smokey Point Blvd, Arlington
 Reservations: 360-657-0500
 Fax: 360-657-0555
wyndhamgardenarlington.com



HOTEL NEXUS - NORTH SEATTLE

Whether for business or leisure, Hotel Nexus boasts affordable rates and an expansive list of amenities. Its north Seattle location provides easy access to I-5, universities, and medical facilities.

2140 N. Northgate Way, Seattle
 800-435-0754
hotelnexusseattle.com



FLOWER WORLD, INC.

Flower World is a gardener's paradise with our freshly grown crops of blooming annuals, perennials and flowering shrubs that are displayed everywhere you look! Located in Maltby, six miles south of Snohomish. Open all year round.
 9322 196th St SE, Snohomish (Located In Maltby)
 360-668-9575 or 425-481-7565
flowerworld.com



Basecamp Bucket List

Our top seven things to do when you visit Urban Basecamp

✓ **VISIT THE AVIATION ATTRACTIONS** Seattle North-Country is home to some of the best aviation museums and attractions in the world. Visit the largest building in the world (by volume) at Boeing Future of Flight, see refurbished vintage war vehicles at the Flying Heritage & Combat Armor Museum, and so much more. For full details, see our Aviation Road Trip, starting on page 33.

✓ **SHOP AT ALDERWOOD** Fifteen minutes north of Seattle in Lynnwood, Alderwood beckons shoppers with 152 retailers, and dozens of restaurants. This spacious shopping center with fountains, skylights, and tile offers visitors everything from outdoor recreational supplies to designer clothes and luxury soaps in an airy, walkable atmosphere.

✓ **WANDER HISTORIC DOWNTOWN BOTHELL** It's easy to see why pioneers settled on the north side of the Sammamish River. Today the muraled brick buildings that line Main Street in Bothell contain bakeries, cute cafes, wine bars, and little boutiques. Feel free to explore with a cup of coffee in hand. Your best bets are Cafe Ladro, McMenamin's Anderson School, the Bothell Landing, and Hillcrest Bakery. Woodinville's famous wineries are only a bicycle ride away.

✓ **VISIT MILL CREEK TOWN CENTER** Eighty merchants fit into this bustling yet walkable urban shopping and dining center. Visitors can enjoy froyo, Indian food, and shopping for gourmet dog treats before walking on the forested North Creek Trail. Local favorites include Central Market for delicious foodie snacks, Spotted Cow Coffee for affogato, and the Tapas & Tablas Restaurant for shareable small plates.

✓ **LEARN ABOUT SALMON AT THE NORTHWEST STREAM CENTER** Salmon are the lifeblood of our region—an invaluable food chain asset and a significant cultural symbol. Salmon and stream health are celebrated at the Northwest Stream Center. And, frankly, it's a beautiful preserve—stroll an elevated boardwalk through a tranquil forest and peer through clear tanks into the very heart of a northwest stream.

✓ **RELAX AT Q AND OLYMPUS SPAS** It's time for a mung



bean facial and a recharging morning in a salt rock room. Align your chakras, destress your body, and get your cucumber eyes on. Skin care, facials, herbal dry sauna, steam baths, and a reading room help you to detox and recharge your brain. Visit these saunas in Lynnwood and Mill Creek and come back renewed.

Q Spa - Mill Creek and Lynnwood. Men and women.

Olympus Spa - Lynnwood. Women only.

✓ **VISIT MOUNTLAKE TERRACE** Known for its arts community, the annual Arts of Terrace is one of the best art shows in the region featuring works by top local and regional artists. Focusing on all community members, the city devotes over 260 acres to recreation, including its popular aquatic center, nine neighborhood parks, three sports complexes, and 14 sports fields. Every summer, the city hosts Tour de Terrace, a Seafair festival that attracts thousands of people from all over the region.

For more things to do in Urban Basecamp, visit SeattleNorthCountry.com/urban-basecamp ■

**VISIT THE
HEART
OF THE
PNW**

SEATTLE
NORTHCOUNTRY
TRUE  PNW

FLY HERE




*Experience History
in Motion*

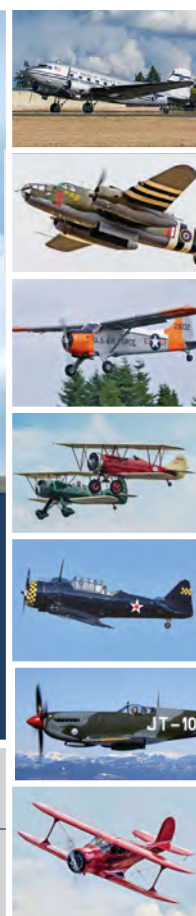
 Follow us

HISTORIC FLIGHT



HistoricFlight.org
visitorservices@historicflight.org
(425) 348-3200

Historic Flight features a collection of the most important aircraft produced between 1927 and 1957, all restored and airborne again. We offer vintage flight experiences in many of our aircraft including the B-25 Mitchell, Douglas DC-3 and North American T-6.



SEATTLE
NORTHCOUNTRY
TRUE  PNW

Made possible in part by assistance from
the Snohomish County Hotel-Motel Tax Fund.

**\$2 OFF
ADMISSION**

ONE COUPON PER PERSON
DOES NOT EXPIRE

10719 Bernie Webber Dr.
Mukilteo, WA 98275

SKYKOMISH

— RIVER VALLEYS —

SNOHOMISH

Visiting the towns of the Skykomish—Snohomish River Valleys feels like a trip back in time. Here, you can linger in bakeries, boutiques, and vintage shops, sip local coffee alongside some of the friendliest folks around, and hop from farmstand to farmstand, feasting on berries in the summer and picking pumpkins in the fall. Relax in small-town diners after a day of skiing, hiking, or rock climbing. Launch a white-water rafting trip from a historic mining village, then take in the lush river landscapes and rural vistas from a hot air balloon.

VANCOUVER BC ▲

SEATTLE ▼

CITIES & TOWNS

1 LAKE STEVENS

Home to the largest recreational lake in Snohomish County, Lake Stevens is an aquatic dream for watersports enthusiasts. Swim, kayak, paddleboard, or wakeboard with stunning views of Pilchuck Mountain.

2 SNOHOMISH

Antiques and boutiques define the bohemian-chic Snohomish vibe. Savor old things and new in charming combinations of upcycled goods and fresh-baked bread. Take a river stroll here for a cozy, small-town feel of an old American “main street.” Dive out of an airplane or soar above the treeline with hot air balloons at Harvey Field.

3 MONROE

Located at the confluence of two rivers and the intersection of

two highways, seemingly every route in the region leads to the small city of Monroe. River recreation, and a cute downtown can’t be missed. Every year thousands of swifts flock to the Frank Wagner Elementary School in Monroe. The Evergreen State Fair offers small-town summer fun as well as weekend NASCAR races.

4 SULTAN

Sultan is a great place to stop off on Highway 2 as you’re headed to the Cascade Mountains or Stevens Pass. Get a beer or a coffee and stretch your legs next to the Skykomish River. Be sure to try the regionally-famous Sultan Bakery for tasty baked goods.

5 STARTUP

Stop off at a roadside farmstand for honey, fresh pumpkins, or

tomatoes grown in nearby fields. This tiny city is adorned with sweeping views of the foothills of the Cascades.

6 GOLD BAR

Named for precious ore found in the Skykomish River, Gold Bar is a little city where you can buy beef jerky from a roadside stand or get a stack of flapjacks before hitting the mountains for the day.

7 INDEX

This tiny town is situated underneath towering granite cliffs and next to the Upper Fork of the Skykomish River—both of these features make it an ideal setting for kayaking, climbing, bouldering or offroading with an ATV. Stay in one of the town’s many comfortable B&Bs and use it as a basecamp for day adventures in the Cascade Mountains.



WHAT'S IN A NAME?

Skykomish
“Skykomish” comes from the Northern Lushootseed word meaning “upriver people.”

Snohomish
“Snohomish” means “lowland people” according to the last chief of the Snohomish tribe, Chief William Shelton.



SKYKOMISH-SNOHOMISH ROAD TRIP

Sea to Sky

This is the story of a road trip to the Sky.

“Sky” here meaning both “the Skykomish River Valley” and the actual sky-sky. Because if you drive far enough into the mountains of Seattle NorthCountry, something strange happens.

Land, clouds, rain, snow, and rocks get all mixed up. Rivers become fog. Clouds fill the trees. Waterfalls gush from cliffs. You realize that the mighty Cascade Mountains are permanently engulfed in never-ending cycles of condensation.

This is the reason they call Washington the Evergreen State.

Your trip starts at a low elevation. Begin in the coastal community of Everett, traveling east on Highway 2 to the county line in the sky.

SNOHOMISH

Snohomish is an appealing mix of old and new. The town prides itself on its non-commercialized and walkable downtown filled with antique shops and boutiques—next to the placid Snohomish River. You can’t go wrong with a day filled with upcycled vintage fashion, hand-thrown pottery, or fresh-baked croissants in this adorable old-school town.

Stop for lunch at **ANDY’S FISH HOUSE** (1229 1st St, Snohomish), a riverfront spot known for seafood (don’t miss the clam chowder), before spending a day antique hunting along the river.

MONROE

From Highway 2, Monroe looks like a few chain stores, but venture a minute or two off the highway and you’ll find a walkable historic downtown. For a great picnic spot, swing by the beautiful 90-acre **AL BORLIN PARK** (561 South Lewis St) where you’ll find waterfront access, picnic tables and barbeque pits.

THE REPTILE ZOO

A few miles down the road, you’ll find **THE REPTILE ZOO** (22715 US-2), a barn filled with scaly crawling oddities like gila monsters, a mexican crocodile, and king cobras. It’s a trip to see these exotic creatures crawling and slithering in a barn in the wilderness.

WHAT TO PACK

SNOWBOARD/ SNOW SKIS

If you’re visiting in the winter, you can extend your trip by a few miles and end up at Steven’s Pass—a popular spot for winter sports.

HIKING GEAR

The valley boasts great hikes with stunning views. Pack your hiking gear and head to Heybrook Lookout, Lake Dorothy, or Bridal Veil Falls.



SUSTAINABLE NORTHCOUNTRY

Please be
mindful to
navigate around
all woody debris
in rivers.

Downed trees are
vital for salmon
habitat, but trap
kayaks and rafts.



WAYSIDE CHAPEL

The Wayside Chapel is a tiny roadside micro-church with four pews on the edge of a grassy field. Stop in for a moment of rest and meditation.

ZEKES DRIVE-IN

ZEKE'S DRIVE-IN (43918 US-2) is the very last stop for greasy roadside fare before getting deep into the mountains. It's located on a turn-off area past Gold Bar. You can order fish and chips, fried mushrooms, burgers, shakes, and fries. Zeke's also has an indoor seating area to keep you dry. The fish and chips here are crispy on the outside and the shakes are so thick you can stand a straw in them.

INDEX

To find Index, drive to the middle of nowhere and take a left. Then you're still a mile out of town. If you're looking for an adorable and remote Northwest town, this is it.



The tiny community of Index is located at the base of a craggy mountain face next to a river. Mining and fishing are what brought early pioneers here. The sheer rock cliffs and the North Fork of the Skykomish River continue to draw people to this remote location—it's the perfect town for climbers and kayakers.

Visit the **OUTDOOR ADVENTURE CENTER** (444 Ave A), an A-frame lodge that used to be the town tavern. It's right next to the river, and an ideal place to rent a kayak or a raft to float down the North Fork of the Skykomish. The Outdoor Adventure Center has wetsuits, helmets, and paddles for rent.

After rafting, stop at the lodge for hot scones. The interior of the place is filled with vintage camping gear, a roaring fire (you'll want to warm up), and coolers fully stocked with Washington cider and beer. Try the cider from Tieton Cider Works, a brewery in Yakima.

BIGFOOT

Two miles past Index on Highway 2 you will see the iconic hairy guy: bigfoot. There are two large big-foot statues on the south side of the road.

This is **ESPRESSO CHALET**, a small Airstream-style trailer converted into a roadside stand. Kitsch is king here. They sell ice cream and serve coffee, and also have a bathroom. Most importantly, they offer the bigfoot statue photo op and other memorabilia like mini bigfoot figurines, t-shirts, and magnets.

THEN BACK

The beauty of the Sea to Sky road trip is that you can go out to the edge of nowhere, raft on wild rivers, get a hot meal, and be back to a city for a warm hotel bed and cocktails before sundown. This is the beauty of the Pacific Northwest, a place that hasn't been completely tamed. ■



Sultan-Sky Valley Information Center

Let us help you plan your Sky Valley adventure!

US Forest Trailhead Passes • Discover Pass • Fishing/Hunting Licenses •
Hiking • Fishing • Rafting • Winter Sports • Historical Transportation Exhibit



320 Main Street, Sultan • (360) 793-0983 • www.skyvalleychamber.com

Download our free Sky Valley Insider travel app

THE ADVENTURE STARTS HERE.

EAT, PLAY, STAY, SHOP.



Choose MONROE

Partial Funding Provided by the City of Monroe Lodging Taxes

Learn more about
Monroe, Washington at
choosemonroe.com

Skykomish— Snohomish Bucket List



Seven things not to miss when you visit the Skykomish-Snohomish River Valleys

✓ **TAKE A HOT AIR BALLOON RIDE** Floating above the treelines. Seeing the sunset paint the farm fields of the Skykomish River Valley and the redbrick buildings of Snohomish. The feeling of being aloft and soaring. The view of a curved horizon from 1,000 feet in the air. Hot air balloon rides that depart from Harvey Field in Snohomish provide an aerial experience that you'll remember the rest of your life.

✓ **VISIT THE REPTILE ZOO** Come face to face with an albino alligator and peep at a king cobra from behind protective glass. If it's scaly, shelled, or slithering, odds are you'll find it swimming or basking under a heat lamp here. This roadside reptile zoo will bring out the wonder in visitors with the magic of a two-headed turtle, or an iguana trained to say "hello" on command.

✓ **LAUNCH A RAFTING ADVENTURE** The town of Index is a gateway to world-class rafting. The town is bordered on the south by the North Fork of the Skykomish River. Rent kayaks or rafts and take a guided tour of the river with the expert tour guides of the **Outdoor Adventure Center**. After a day on class-five rapids, return to the OAC's River House in Index to warm up with a cozy fire and a local cider.

✓ **HIKE TO HEYBROOK LOOKOUT** Glamp above the treeline at 1,700 feet. This 1930s fire lookout fell into disrepair for decades before a team of dedicated volunteers lovingly restored it into a luxurious cabin that you can rent by the night. Enjoy morning coffee with panoramic views of the Cascade Mountains. The hike to the top of the ridge is worth every 900 feet of the journey.

✓ **SOAK IN THE MIST AT BRIDAL VEIL FALLS** Witness a mist-wreathed wonder: Lake Serene spills 1,328 feet from a mountain face directly into the South Fork of the Skykomish River. This perennial wonder of water is called Bridal Veil Falls for its gauzy, ghostly aesthetic. The mist is good for cooling off in the summer or for a spectral hike in the winter.

✓ **GO ROCK CLIMBING IN INDEX** The Index Town Wall is comprised of 1,300-foot granite cliffs. The Wall is a favorite of adventurous climbers and bouldering



OUTDOOR ADVENTURE CENTER



BRIDAL VEIL FALLS

experts. Post up overnight and travel locally to enjoy other bouldering destinations along the Skykomish River Valley.

✓ **VISIT LAKE STEVENS** A huge draw year round, with lots of activity, Lake Stevens is home to the largest lake in Seattle NorthCountry (1,000 acres and 8 miles of shoreline), a historic downtown situated at the north end of the lake and was built on the former Rucker Mill site. With public and private shore lands, sandy public beaches and public boat launches, Lake Stevens happily recruits visitors toting canoes, jet skis, sailboats, wakeboards and other water gear.

For more things to do in the Coastal Communities, visit SeattleNorthCountry.com/sky-sno-valleys ■

STILLAGUAMISH — SAUK — RIVER VALLEYS

The Stillaguamish—Sauk River Valleys are the doorstep of the Central Cascades. Here, you can hike to glaciers that pool into alpine lakes, take in the night sky from a fire lookout, camp in the woods at a music festival, and explore the history of lumber & farming towns set in the shadow of towering snow-topped mountains. This verdant valley is a destination for river rafters, hikers, van campers, mountain bikers, and anyone else who likes to roam places that are still truly wild.

VANCOUVER BC ▲

SEATTLE ▼

CITIES & TOWNS



1 SILVANA

A charming, blink-and-you-miss-it town. Silvana is comprised of a roadside cluster of diners, grain silos, berry farms, and dairies. A must-stop route for bicyclists exploring the agrarian side roads of Seattle NorthCountry. Also perfect for a small cool-off dip in the Stillaguamish River.

2 ARLINGTON

Farmland at the base of the Cascades: Arlington is still home to old farming co-op/hardware stores as well as more modern kombucha breweries and river rafting. Bicyclists prize this small downtown as a stop-off for refueling as they pedal east toward the photogenic “walking valley”—so-called by the indigenous peoples for the shifting geography, due to glacial melt and changing river flows.

3 OSO

Oso prides itself on its tight-knit feel—a community predicated on outdoor recreation, mountain biking, and horses. Visit Rhodes River Ranch for dinner next to a horse arena. The Whitehorse Trail goes through Oso and takes walkers, equestrians and bicyclists to next-door Arlington or Darrington.

4 GRANITE FALLS

A one-stoplight town on the cusp of a literal northwest wilderness. “Granite” as it’s known locally, is home to an actual waterfall that spills over rock faces. The gateway to the Mountain Loop Highway—a scenic mountainous and river-fed region, perfect for camping.

5 VERLOT

Verlot Visitor Center was the home and office of the Forest Service

Ranger from the 1930s until the early 1980s. The Verlot Campground, across the street, was the site of a Civilian Conservation Corps camp. Today it is a perfect place to camp over the weekend. It has several campsites for rent and it’s right next to the South Fork of the Stillaguamish River, with peekaboo views of Mount Pilchuck.

6 DARRINGTON

A historic lumber town with a small-town vibe, in the shadow of Whitehorse Mountain and on the scenic Mountain Loop Highway. Though lumber still plays a role, Darrington also has access to the best music festivals (Bluegrass Festival and Summer Meltown), downhill mountain biking, wilderness trails, whitewater rafting and kayaking in Seattle NorthCountry.

STILLAGUAMISH—SAUK ROAD TRIP

The Mountain Loop

The Mountain Loop Highway is a real trip “out there”—a self-contained cycle, a circuit that takes you out to the wild woods before returning you to your urban origins.

This is about as “far out” into the PNW wilderness as you can get on four wheels. A car camping dream spot. Expect to see breathtaking beauty.

This route is also known as the Mountain Loop Scenic Byway. Byway as in, you don’t really need to go there. And maybe that’s the whole point: it’s out there just to be enjoyed. Here’s a guided tour of the best places to visit when you go.

GRANITE FALLS

Granite Falls is an old lumber town at the base of Mount Pilchuck.

“Granite,” as the locals call it, is the jumping off point to the Mountain Loop. Stop at **GRANITE FALLS HARDWARE** (108 S Granite Ave) to pick up firewood, hatchets, and other camping supplies. The **IGA GROCERY STORE** (115 N Granite Ave) has ice and food for your trip.

WHAT’S IN A NAME?

Stillaguamish

The Stillaguamish people are descendants of the Stoluck-wamish River Tribe, who lived along the Stillaguamish River in the 1850s.

Sauk

The Sauk people historically lived along the banks of the Sauk, Suiattle, Cascade, Stillaguamish, and Skagit rivers.



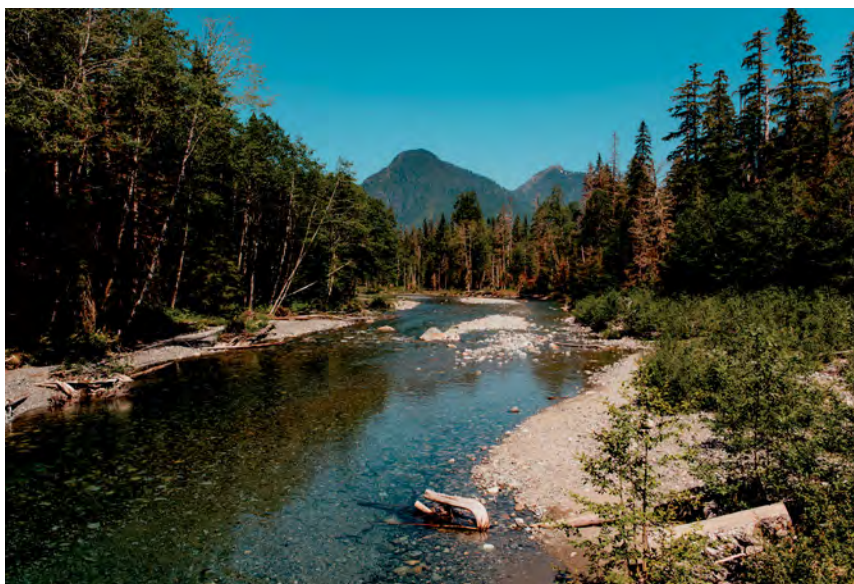
On your way out of Granite Falls, look for the town’s namesake: a giant waterfall pouring over boulders. It’s a short hike from the roadside turnoff.

VERLOT

One of the most accessible and camper friendly parts of the Loop is Verlot. Located just a few miles out of Granite Falls, it’s a **FORESTED CAMPING AREA** next to the Stillaguamish River. Camping spots here are only \$12 a night for one vehicle, tax included. Most sites at Verlot come with picnic tables and fire rings.

The Stillaguamish River, or the “Stilly” is shallow enough here in the summer to wade or swim in. Across the river is the peak of Mount Pilchuck.

Verlot is not deep wilderness, which makes it ideal for the casual outdoors person. If you want to see more, then continue out on the Mountain Loop.



WHAT TO PACK

CAMPING GEAR

The Stillaguamish—Sauk River Valleys are home to some of the best camping in the region. If you’re up for it, you can backpack to Goat Lake and spend the night under the stars (though spaces are limited, so be sure to have a plan B). You’ll also find a lot of car campgrounds in the area.

THE TEN ESSENTIALS

Considering taking a hike in wilderness areas? Be sure to bring along the following:

Map and Compass

Sun Protection

Extra Clothing

Matches or Fire Starter

Headlamp or Flashlight

First Aid Supplies

Pocketknife

Extra Food

Extra Water

Emergency Shelter (such as a space blanket)

THE BIG FOUR ICE CAVES

A short drive from Verlot are the spectacular **BIG FOUR ICE CAVES**. They make for a fail-proof hike. The ice caves are a one mile trek each way from the trailheads; easy to get to along a cleared path that has a low gain in elevation.

The Big Four Mountain has a microclimate on its north face that sustains ice year-round. The mountainside is marbled with veins of frozen water and patches of snow. Majestic.

There are two paths leading from the trailhead that meet up at the base of Big Four. We recommend the boardwalk route through the wetlands. The trail leads through four unique ecosystems, meadow, marsh, forest and alpine.

A major word of warning: never go in, near, or climb on top of the ice caves. They collapse without warning and have killed people.

DEEP LOOP

Far out on the 'Loop, past the trailhead for the ghost town of **MONTE CRISTO** (which is definitely worth a trip), the Scenic Byway turns into an unpaved road. The route here is steep, and the road is made of compact dirt and gravel.

This is where things get really "off the grid." Here you're guaranteed stunning panoramic views. The timber-carpeted slopes and waterfalls might actually take your breath away. Turn off on the White Chuck Overlook and keep an eye out for mountain goats.

DARRINGTON

Coming out of the wilderness, you'll drive into the small town of Darrington.

Darrington's cozy little downtown has some of the best views in the county of Whitehorse Mountain. Spend an afternoon in Darrington and you'll never quite adjust to the seemingly-distorted perspective of a giant mountain looming over the city.

Darrington is a "jumping off point" if you're headed on the 'Loop in the other direction. Check out one of Darrington's best hikes, **THE WHITEHORSE TRAIL**.



ARLINGTON

Past Darrington is **SQUIRE CREEK** (41415 State Rte 530 NE), a wonderful campground for car/tent camping. Beautiful, quiet and rural. It's close to lots of hiking, equestrian, biking, and rafting opportunities.

Between Darrington and Arlington is the **RHODES RIVER RANCH** (22016 Entsminger Rd). This ranch is exactly what you don't expect to find in a Northwest wilderness. Is it a giant luxurious horse-training arena? Is it a classy place for steak dinners and whiskey? Yes to all of the above.

That's right: the roadside restaurant is built around an equestrian arena. Stop by for dinner and a show.

WHEN YOU GO

It's possible to see the Mountain Loop in one day. But it might be better as a two-day trip: camp overnight, come back the next day.

No matter your plans for tackling the route, you simply can't go wrong with the views on this scenic byway. Don't forget your camera.

SUSTAINABLE NORTH COUNTRY

Feel free to take selfies, but please do so without harming yourself. Do not get close to cliff edges, waterfalls, or wildlife. While you're at it, please protect wild places by leaving location tags off of your social media posts. Fragile wild areas can get trampled when they become Insta-famous.



A woman with long brown hair, wearing a light blue long-sleeved shirt and blue jeans, is hiking down a set of wooden steps. She has a baby in a red carrier on her back. Two young girls are also hiking down the steps. The girl in the foreground has blonde hair and is wearing a dark blue denim dress over a teal shirt. The girl behind her has brown hair and is wearing a red shirt and blue overalls. The ground is covered in dry, brown leaves, and there are trees and bushes in the background.

TWO HIKE, PERFECT FOR THE WHOLE FAM

1

BOULDER RIVER WATERFALL Arlington

This 2.5-mile roundtrip jaunt is easy enough for the little ones, but still delivers beautiful old-growth forests and a spectacular waterfall. Just past the waterfall, you'll find a great place to stop for lunch.

2

BEAVER LAKE Darrington

At 2.6 miles roundtrip and just 100 feet of elevation gain, Beaver Lake is a great family-friendly hike. The hike comfortably follows an old logging road and is a perfect place to observe wildlife, especially birds.



GOAT LAKE



BIG FOUR ICE CAVES

Stillaguamish— Sauk Bucket List

Five ways to experience the Stillaguamish-Sauk River Valleys

❑ **NORTH MOUNTAIN BIKE PARK** See the rugged northwest from two wheels. 4.6 miles of low-elevation trails take you into the foothills of the North Cascades at this bike park. The trails are ranked by difficulty, ranging from beginner-level novice slaloms to steep-grade “experts only” skills areas. The bike park trails intersect with the Whitehorse Trail—take a short bike ride to the lumber town of Darrington for lunch and a beer.

❑ **THE BLUEGRASS FESTIVAL** If you’re in town at the right time, don’t miss the PNW’s longest-running bluegrass festival. It’s not just for acoustic pluckin’, strummin’, and stomping. Visitors can enjoy hiking on the Whitehorse Trail, camping, river swimming, and 24-hour campfire jams, food and craft vendors. The festival is held at an outdoor amphitheatre with commanding views of snowy Whitehorse Mountain. Another summer music festival—Summer Meltdown, is held at the same location. Be sure to check SeattleNorthCountry.com for festival dates and times.

❑ **GOAT LAKE** Rest your feet in the shallows of this glacial lake on the furthest reaches of the Mountain Loop Highway. This popular trail in the North Cascades offers day-use and overnight camping. Be sure to visit if you like mirrored reflections of stunning Foggy Peak, mountainous waterfalls

and the pristine beauty of an old-growth forest.

❑ **BIG FOUR ICE CAVES** The north side of Big Four Mountain has a unique ecosystem that creates year-round ice caves. The hike to the caves is accessible from the stunning Mountain Loop Highway. The easy hiking route takes you on boardwalks, over wetlands, and onto a gently-sloping forested path. **The caves are for observing only from a distance—they have been known to collapse without warning. Never venture near the caves.**

❑ **GREEN MOUNTAIN LOOKOUT** One of Washington State’s all-time best hikes, Green Mountain Lookout is definitely worth the 8.5-mile round-trip. The historic lookout at the top was originally built in 1933 and is on the National Register of Historic Places, but it’s the view that you won’t forget: Glacier Peak, Buckindy, Dome Peak and more loom in the distance. In the winter, you’ll likely find snow near the top, in the fall the colors are stunning. If you’re hiking in the summer, be sure to pack plenty of water and sun protection—much of the hike is exposed.

For more to do in the Stillaguamish—Sauk Region, visit SeattleNorthCountry.com/stilly-sauk-valleys ■

SEATTLE
NORTHCOUNTRY
TRUE  PNW

RESOURCES



HOTELS

Amenities Key

- Accessible
- Meeting Rooms
- Restaurant/Lounge
- Breakfast
- Wifi
- Pool/Spa
- Laundry
- Kitchenette Units
- Pet-Friendly
- Fitness Center
- Week/Long-term rates
- Spa

AMENITIES ARE
SUBJECT TO CHANGE

	Units		Units
Urban Basecamp		Bothell Inn & Suites	84
Americas Best Value Inn	46	3850 Monte Villa Pkwy, Bothell (425) 398-9700 bothellsuites.com 	
4117 196th St SW Lynnwood 425-775-8030 americasbestvalueinn.com 		Spacious studio rooms.	
Close to Lynnwood Convention Center, large vehicle parking.		Comfort Inn & Suites Seattle North	61
Best Lynnwood Inn	37	1414 228th St SE, Bothell 425-402-0900 / 800-424-6423 comfortinn.com 	
18109 Highway 99, Lynnwood 425-582-8556 lynnwoodmotel.com 		Business center, Indoor pool.	
Free WiFi, Free Parking		Courtyard by Marriott Lynnwood	156
Best Western Alderwood	141	4220 Alderwood Mall Blvd, Lynnwood 425-670-0500 800-321-2211 marriott.com/sealn 	
19332 36th Ave W, Lynnwood 425-775-7600 800-780-7234 bestwestern.com 		Indoor pool, newly renovated, suites available, full service bar.	
Close to Alderwood Mall and next door to Lynnwood Convention Center.		Days Inn Everett	76
Best Western Plus Navigator Inn & Suites	102	1602 SE Everett Mall Way, Everett 425-953-1596 wyndhamhotels.com/days-inn-everett 	
10210 Evergreen Way, Everett 425-347-2555 877-488-0510 navigatorsuites.com 		Truck/Bus parking, Next to Everett Mall.	
Tubs for 2, evening reception M-TH, Indoor pool.			

	Units		Units		Units
Econo Lodge-Everett Mall 9602 19th Ave SE, Everett 425-337-9090 800-434-9204 www.econolodge.com AAA Great rates for clean, quiet rooms, convenient location, seasonal pool.	116	Hampton Inn and Suites - Lynnwood 19324 Alderwood Mall Pkwy, Lynnwood 425-771-1888 800-771-8555 hamptonseattlenorth.com AAA Free shuttle service within 10mi radius.	152	Hotel International 5621 196th St SE, Lynnwood 425-771-1777 800-626-5750 lynnwoodhotelinternational.co Close to shopping and restaurants.	53
Embassy Suites Hotel 20610 44th Ave W, Lynnwood 425-775-2500 800-628-0611 embassysuiteslynnwood.com AAA Minutes from Seattle. Flexible meeting and event space. Newly renovated.	240	Hilton Garden Inn - Bothell 22600 Bothell Everett Highway, Bothell 425-486-0400 800-STAY-HGI seattlebothell.hgi.com Full service restaurant. Canyon Park area.	128	La Quinta Inn - Everett 12619 4th Ave W, Everett 425-347-9099 www.lq.com AAA Full service business center.	73
Extended Stay America - Bothell West 923 228th St SE, Bothell 425-402-4252 800-EXT-STAY www.extendedstayhotels.com AAA Economy studios.	101	Hilton Garden Inn - Lynnwood 3801 Alderwood Mall Boulevard Lynnwood 800-STAY-HGI Opening 2020. Next to Lynnwood Convention Center.	155	La Quinta Inn - Lynnwood 4300 Alderwood Mall Blvd, Lynnwood 425-775-7447 800-775-0805 www.lq.com AAA Walking distance to shopping and restaurants. Indoor pool and spa.	101
Extended Stay America - Canyon Park 22122 17th Ave SE, Bothell 425-482-2900 800-EXT-STAY extendedstayhotels.com AAA Canyon Park area. Shuttle.	123	Hilton Garden Inn - Mukilteo/ North Everett 8401 Paine Field Blvd, Mukilteo 425-423-9000 877-STAY-HGI hiltongardeninn3.hilton.com AAA Adjacent to PAE Terminal & Future of Flight.	102	Marriott TownePlace Suites 8521 Mukilteo Speedway, Mukilteo, 425-551-5900 800-257-3000 www.marriott.com/SEATS AAA AAA Diamond. Close to Boeing and Future of Flight museum.	128
Extended Stay America - Everett North 8410 Broadway, Everett 425-355-1923 800-EXT-STAY extendedstayhotels.com AAA Full kitchen in all rooms. 24-hour guest laundry.	104	Holiday Inn Express- Bothell 22922 15th Ave SE, Bothell 425-483-8100 800-465-4329 hiexpress.com/bothellwa AAA Business Center. Indoor pool.	62	Motel 6 Everett North 10006 Evergreen Way, Everett 425-347-2060 800-466-8356 www.motel6.com AAA Walking distance to area restaurants.	117
Extended Stay America - Lynnwood 3021 196th St SW, Lynnwood 425-670-2520 800-EXT-STAY extendedstayhotels.com AAA Fully equipped kitchens.	109	Holiday Inn Express Hotel & Suites - Everett 131 128th St SW, Everett 425-609-4000 800-465-4329 hiexpress.com/everettwa AAA Near Boeing, business center, indoor pool.	99	Motel 6 Everett South 224 128th St SW, Everett 425-353-8120 800-466-8356 www.motel6.com AAA Off I-5, next to Denny's, stores. Some rooms with microwave and fridge.	99
Extended Stay America - Silverlake 1431 112th St. SE, Everett 425-337-1341 800-EXT-STAY extendedstayhotels.com AAA Silver Lake area. Near Future of Flight and Harbour Pointe Golf.	88	Holiday Inn Express Hotel & Suites - Lynnwood 2519 196th Street SW, Lynnwood 425-672-1234 800-261-9168 hiexpress.com/lynnwoodwa AAA Close to Alderwood Mall and Lynnwood Convention Center.	80	Quality Inn & Suites 101 128th St SE, Everett 425-609-4550 800-499-2093 www.hoteleverett.com AAA Near Boeing center.	82
Far West Motel 6030 Evergreen Way, Everett 425-355-3007 AAA	20	Homewood Suites by Hilton 18123 Alderwood Mall Parkway Lynnwood 425-670-8943 homewoodsuites3.hilton.com AAA Indoor pool. Near Alderwood Mall and Everett Boeing.	165	Residence Inn by Marriott 18200 Alderwood Mall Pkwy, Lynnwood 425-771-1100 800-331-3131 www.marriott.com/SEALW AAA All Suite hotel w/ fully equipped kitchens, adjacent to Alderwood Mall.	120

Amenities Key

- Accessible
- Meeting Rooms
- Restaurant/Lounge
- Breakfast
- Wifi
- Pool/Spa
- Laundry
- Kitchenette Units
- Pet-Friendly
- Fitness Center
- Week/Long-term rates
- Spa

AMENITIES ARE
SUBJECT TO CHANGE

	Units		Units
Rodeo Inn 20707 Hwy 99, Lynnwood 425-774-7700 	52	Best Western Cascadia Inn 2800 Pacific Ave, Everett 425-258-4141 800-822-5876 bestwestern.com AAA Near Angel of the Winds Arena. Business services.	134
Studio 6 6017 244th St SW, Mountlake Terrace 425-771-3139 staystudio6.com Fully furnished studios. Kids stay free.	119	Best Western Plus Edmonds Harbor Inn 130 W Dayton St, Edmonds 425-771-5021 800-441-8033 www.bwedmondsharborinn.com AAA Situated 1.5 blocks from the waterfront in the heart of Edmonds.	91
Sunrise Motor Inn 8421 Evergreen Way, Everett 425-347-1100 sunrise-inn-everett.booked.net AAA Located close to Interstate 5 and Boeing facilities.	60	City Center Motel 810 State Ave, Marysville 360-659-2424 	21
WoodSpring Suites Seattle Everett 7510 Broadway, Everett 425-645-9260 844-974-6835 woodspring.com/extended-stay-hotels An Extended Stay hotel. Weekly/Monthly rates. Minutes from Boeing and downtown Everett.	122	Courtyard by Marriott Everett Downtown 3003 Colby Avenue, Everett 425-259-2200 www.marriott.com Near Boeing & Angel of the Winds Arena. Great views. Five meeting spaces.	156
Coastal Communities		Delta by Marriott- Downtown Everett 3105 Pine Street, Everett 425-339-2000 marriott.com AAA Near downtown Everett & I-5. Free parking. Full-service restaurant.	232
Americas Best Value Inn - Edmonds 22127 Highway 99, Edmonds 425-776-0200 888-315-2378 www.americasbestvalueinn.com 16 & under stay free.	54	Extended Stay America - Mukilteo 3917 Harbour Point Blvd SW, Mukilteo 425-493-1561 800-EXT-STAY extendedstayhotels.com AAA Economy Studios.	107
Andy's Motel 22201 Highway 99, Edmonds 425-776-6080 Large parking lot for big trucks.	50	Golden West Motel 23916 Highway 99, Edmonds 425-771-3447 	25
		Hampton Inn and Suites - Everett Downtown 2931 West Marine View Drive, Everett 425-349-4466 hamptoninn3.hilton.com AAA Beautiful hotel in downtown Everett boasting waterfront views.	122
		Holiday Inn Express Hotel & Suites Marysville 8606 36th Ave NE, Marysville 360-530-1234 800-664-9491 www.hiexpress.com/marysvillewa AAA One mile from Tulalip Resort Casino and Spa and Seattle Premium Outlets.	100
		Hotel Indigo 1205 Craftsman Way, Everett columbiahospitality.com/hotel_indigo OPENING 2019	142
		Home2 Suites by Hilton - Marysville 4070 116th Street NE, Marysville 360-658-2900 home2suites3.hilton.com AAA	90
		Inn at Port Gardner 1700 W Marine View Dr, Everett 425-252-6779 888-252-6779 innatportgardner.com AAA Boutique-style Inn located on the Everett Marina, next to fine dining.	33
		K & E Motor Inn 23921 Highway 99, Edmonds 425-778-2181 800-787-2181 kandemotorinnmotel.com AAA Walk to shopping & restaurants.	32
		Motel Express 2301 Broadway, Everett 425-259-6131 motelexpress.webs.com Near Boeing, Everett Marina and mall.	33
		Navy Gateway Inns & Suites 13918 45th Avenue NE, Marysville 425-304-3000 800-628-9466 www.cnic.navy.mil/everett Open to Active Duty Military, Reservist, Retirees, Dependent/s with valid I.d. Card. Close to Everett Naval Base.	72
		Quality Inn Marysville 6311 33rd Ave NE, Tulalip 360-658-1339 800-4-CHOICE www.choicehotels.com/hotel/wa166 AAA Near Tulalip Casino, Angel of the Winds Arena Everett and Boeing Everett.	60
		Red Lion Inn & Suites Everett 1122 Broadway, Everett 425-405-3607 844-248-7467 www.redlion.com/everett Free parking; military discount.	44

	Units		Units		Units
Silver Cloud Inn 718 Front St, Mukilteo 425-423-8600 800-311-1461 www.silvercloud.com/mukilteo.htm 🏠 🚗 📶 AAA 🍷 🍷 🚿 🛏 <i>Boutique style hotel located on the Mukilteo waterfront. Passes to local health club.</i>	70	Welcome Motor Inn 1205 Broadway, Everett 425-252-8828 📶 🍷 🚗 🚿 🛏 <i>Near Naval base.</i>	42	Stillaguamish—Sauk	
St Frances Motel 23905 Highway 99, Edmonds 425-775-0496 🍷 🍷 🛏	27	Best Western Sky Valley Inn 19233 Hwy 2, Monroe 360-794-3111 800-528-1234 www.bestwestern.com/prop_48118 🏠 🚗 🚗 📶 AAA 🍷 🍷 🚗 🚗 🚿 🛏 <i>Close to Evergreen State Fairgrounds. Business Center.</i>	58	Angel of the Winds Casino & Hotel 3438 Stoluckquamish Lane, Arlington 360-474-9740 angelofthewinds.com/hotel 🏠 🚗 📶 AAA 🚿 <i>Hotel is adjacent to casino with restaurants, entertainment, brewery.</i>	125
Staybridge Suites 9600 Harbour Place, Mukilteo 425-493-9500 800-261-9168 www.staymukilteo.com 🏠 🚗 🚗 📶 AAA 🍷 🍷 🚗 🚗 🚿 🛏 <i>Near PAE Terminal, Future of Flight and Boeing. Close to Mukilteo ferry.</i>	134	Dutch Cup Motel 819 Main St, Sultan 360-793-2215 800-844-0488 www.dutchcup.com 📶 AAA 🚗 🛏 <i>Environmentally respectful.</i>	20	Arlington Motor Inn 2214 SR 530 NE, Arlington 360-652-9595 🚗 📶 AAA 🍷 🚗 🚿 🛏	42
Travelodge - Seattle North/Edmonds 23825 Highway 99, Edmonds 425-771-8008 travelodge.com 🏠 🚗 📶 AAA 🍷 🚗 🚗 🚿 🛏 <i>Close to downtown Edmonds, 12 miles from downtown Seattle.</i>	58	Evergreen Inn & Suites 19103 Highway 2, Monroe 360-863-1900 hotelinmonroewa.com 🏠 🚗 🚗 📶 AAA 🍷 🍷 🚗 🚗 🚿 🛏 <i>Indoor pool and spa, Business center.</i>	66	Best Western Plus Arlington/Marysville 3721 172nd Street NE, Arlington 360-363-4321 bestwestern.com 🏠 🚗 🚗 📶 AAA 🍷 🚗 🍷 🚗 🚿 🛏	100
Travelodge- Everett City Center 3030 Broadway, Everett 425-259-6141 800-578-7878 www.travelodge.com 🚗 📶 AAA 🚗 🚿 🛏 <i>Close to Angel of the Winds Arena Everett.</i>	28	Fairground Inn Motel 18950 Hwy 2 360-794-5401 fairgroundinn.net 🚗 📶 AAA 🍷 🍷 🚗 🚗 🚿 🛏 <i>Walk to Evergreen State Fairgrounds.</i>	60	Darrington Motor Inn 1100 Seeman St, Darrington 360-436-1776 darringtonmotorinn.com 🏠 📶 🍷 🍷 🚗 🚗 🚿 🛏 <i>View of Whitehorse Mountain.</i>	16
Tulalip Resort Casino & Spa 10200 Quil Ceda Blvd., Tulalip 360-716-6000 888-716-7162 www.tulalipresort.com 🏠 🚗 🚗 🚗 🚗 📶 🍷 🚗 🚿 🛏 <i>Four-star hotel and spa. Next door to Tulalip Casino and Seattle Premium Outlets.</i>	370	Inn at Snohomish 323 Second St, Snohomish 360-568-2208 800-548-9993 www.snohomishinn.com 📶 AAA 🚗 🚿 🛏 <i>In-room coffee, microwave and fridge. Free access to Aquatic Center.</i>	26	Quality Inn Arlington 5200 172nd St NE, Arlington 360-403-7222 866-966-7829 qualityinn.com/hotel/wa179 🏠 🚗 📶 AAA 🍷 🍷 🚗 🚗 🚿 🛏 <i>Near Seattle Premium Outlets.</i>	51
Village Inn & Suites 235 Beach Avenue, Marysville 360-659-0005 800-659-0005 www.villageinnsuite.com 🚗 🚗 📶 AAA 🚿 🛏 <i>Affordable, royal hospitality.</i>	47	Monroe Motel 20310 Old Owen Rd, Monroe 360-794-6751 🏠 🍷 🚗 🚿 🛏 <i>Quiet, on 3 acres, near fairgrounds.</i>	21	Smokey Point Motor Inn 17329 Smokey Point Dr, Arlington 360-659-8561 smokeypointmotorinn.com 🏠 🚗 📶 AAA 🍷 🚗 🚿 🛏 <i>Next to I-5. Quiet. 24 hour on duty.</i>	58
Waits Motel 1301 Lombard Ave, Everett 425-252-3166 everettdowntownmotel.com AAA 🍷 🚿 🛏	25	Stevens Pass Motel 809 Croft Avenue, Gold Bar 360-793-6633 stevenspassmotel.net 🏠 🍷 🍷 🚗 🚗 🚿 🛏 <i>Rustic cabin style, mountain view.</i>	18	The Stanwood Hotel 26926 102nd Avenue NW, Stanwood 360-629-2888 stanwoodhotelsaloon.com 🚗 🚗 📶 <i>Renovated 1890 hotel & saloon.</i>	7
		Wallace Falls Lodge 14424 Wallace Lake Rd, Gold Bar 360-793-8784 888-337-7492 www.wallacefallsldodge.com 🏠 📶 <i>Log Lodge on 10 acres. Perfect for retreats or weddings.</i>	10	Wyndham Garden Hotel Arlington/Marysville 16710 Smokey Point Blvd, Arlington 360-657-0500 www.wyndhamgardenarlington.com 🏠 🚗 🚗 📶 AAA 🍷 🍷 🚗 🚗 🚿 🛏 <i>Indoor pool. Garden Bistro and Lounge. Minutes from Outlets and Casinos.</i>	97



Simple made perfect

Stay at the newest hotel in Everett, where we've embraced the best elements of the Pacific Northwest in our progressive style and design. As one of Marriott International's newest brands, guests and meeting planners at Delta Hotels enjoy all the benefits of Marriott Rewards.

Offering an overwhelming value within a short drive to Downtown Seattle, enjoy perks such as complimentary overnight & event parking, free Internet, complimentary bottled water daily, flexible event space, and well-appointed rooms that work.

Our outstanding amenities include Venture Kitchen & Bar with a private dining room, Grab & Go Marketplace, state-of-the-art fitness center, and indoor pool. Our guests enjoy access to our exclusive high-tech guest Library with plush seating, media center, free Internet, and modern boardroom table & chairs.

With our 232 total guest rooms, 14,000 sq ft of flexible event space, 7,000 sq ft ballroom, and 15 breakouts, you now have a reason to host your next event at Delta Hotels by Marriott Seattle Everett!

from \$129/night

**To reserve your room call 800.MARRIOTT
or visit marriott.com/SEAVT.**


The Delta Hotel by Marriott® Seattle Everett

3105 Pine Street
Everett, WA 98201
425.339.2000



[f DeltaHotels](#)
[i DeltaHotels](#)
[t DeltaHotelsLTD](#)

Rates vary and are subject to availability and restrictions. Group rates for 10 rooms or more are available through the hotel sales office, inquire at 425.339.2000. Individual room rates available online or call 800.MARRIOTT.




Tulalip • Marysville

Close to **The New Tulalip Casino**, **Seattle Premium Outlet Mall** and across the street from **The QC Casino and Night Club**.
Just 30 miles North of **Seattle** and 90 miles South of **Vancouver, BC**.

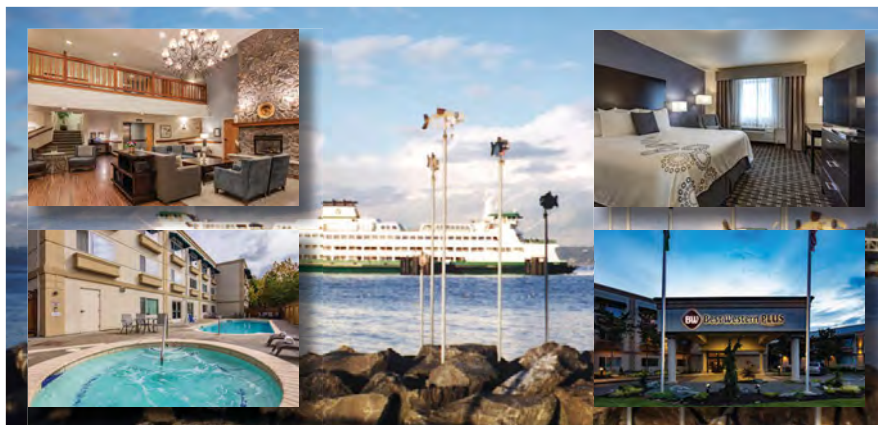
Complimentary Tulalip Casino Shuttle 24 Hours!

Enjoy a **Hot Breakfast Buffet** on us
Guests have full access to our **Fitness Center** and **High Speed Internet**
Guest Laundry and **Premier Jacuzzi Suites** available

* Shuttle to the Tulalip Casino available from the QC Casino and Night Club located just across the street from our hotel



(360) 658-1339
6311 33rd Ave NE Tulalip, WA
1-5 Exit 199




Best Western PLUS

- ◆ 5 minutes to beaches, ferry, restaurants, fishing and shopping
- ◆ Complimentary expanded continental breakfast, WiFi and parking
- ◆ 20 minutes north of Seattle
- ◆ Seasonal pool
- ◆ 100% non-smoking
- ◆ Meeting space
- ◆ Fitness room

Reservations: 1.800.441.8033 or 425.771.5021
www.bwedmondsharborinn.com


Each Best Western® branded hotel is independently owned and operated



EMBASSY SUITES

by HILTON™

Seattle North Lynnwood



Spacious 2-room suites

Complimentary full buffet breakfast with made-to-order Omelette Station and Evening Reception

Complimentary High Speed Internet Access

Indoor pool and exercise facility

Full-service Cascades restaurant, room service and lounge

13,000 sf of meeting space



*Conveniently located off I-5 near Alderwood Mall –
12 miles from Seattle and 90 minutes from Canada*

**Embassy Suites by Hilton
Seattle North Lynnwood**

I-5 Exit 181A
20610 44th Ave. W • Lynnwood

425-775-2500

embassysuiteslynnwood.com



B&Bs & CABINS

ARLINGTON'S RIVER ROCK INN

BED & BREAKFASTS

Coastal Communities

Bayside B&B

1897 historical mansion in downtown Everett. 4 guestrooms.

425-252-2201

2201 Rucker Avenue, Everett

baysidebnb.com

Hogland House B&B, The

2 rooms. Hearty country breakfast, 1906 Craftsman home, view of Puget Sound. Vintage 1 bedroom cabin on grounds also available.

425-742-7639 or 800-480-9570

917 Webster St., Mukilteo

hoglandhouse.com

Dayton B&B, The

2 rooms. Deluxe continental breakfast (extra charge), kitchenette, view of the bay and mountains, private apartment.

425-778-3611 | 522 Dayton, Edmonds.

Skykomish—Snohomish

A Stone's Throw B&B

Decorated in the style that fits the early 1900's era (with updates of electrical and plumbing of course), the B & B accommodates two people. You have privacy, your own sitting room, a coffee maker, microwave, and a refrigerator filled with goodies for your breakfast essentials. Beautiful garden area and awe-inspiring views.

360-793-0100

406 Index Ave, Index

acabinonthesky.com/astonesthrow

Aunt Kathryn's B&B

Aunt Kathryn's Bed & Breakfast is a labor of love. We remodeled and restored a 100+ year old farmhouse into a comfortable and charming destination. Relax in a rural setting while just a few miles from the heart of historic downtown Snohomish. A comfortable room with private bathroom. You'll love the views, location, ambiance, and outdoors space.

360-863-7722

7110 60 St. SE, Snohomish

facebook.com/AuntKathrynBnB

Cadyville Carriage House

1 room. Separate quarters, continental breakfast, complete kitchen, hot tub in garden. Located in historic district.

360-568-5390

304 Avenue A, Snohomish

cadyvillecarriage.com

Hagen White House

Hagen White House is a 2 story, 2000 sq. ft. home with 3 bedrooms, 1 bathroom, laundry room, wood fireplace and fully furnished kitchen. Guest will be provided meals. Enjoy beautiful mountain and Snohomish valley views. Also available a 2 bedroom farmhouse. Call for details.

425-293-4786

6904 E Lowell Larimer Road, Snohomish

hagenfamilyfarms.com

Hummingbird's Nest, The

Private cottage in the city of Snohomish. Separate 1 bedroom, 1-1/2 bath apartment (upstairs over storage garage) provides all of the comforts of home. Located on 2 acres of homeowner's estate (owners live in separate house next door), this spacious 700 sq. foot apartment perches above the Snohomish valley overlooking the Cascade Mountain range and the Snohomish River.

206-226-4903

Connelly Rd., Snohomish

www.vrbo.com/608638

Mansion Inn Lake Stevens B&B

5 private rooms. Breakfast. Beautiful mansion with luxurious rooms, all with lake views.

425-610-4746

1513 Mitchell Drive, Lake Stevens

mansioninnlakestevens.com

Stillaguamish—Sauk

Arlington's River Rock Inn

5 rooms. Northwest lodge-style B&B & Spa with native trails, locally sourced hot breakfast, fireplaces and tubs for two in each room.

360-403-7014

15425 133rd Ave NE, Arlington

riverrockinnbnb.com

Ellerie's River Cottages on the Stillaguamish

Spend a day, a weekend or a week on the banks of the Stillaguamish River in

one of Ellerie's comfortable cottages. All cottages have private access to the river. Two bedrooms, one bath, sleeps up to five (5). Large river view deck. Wood-burning fireplace. Ellerie supplies all the food you need for a full fresh breakfast and you cook it how you like and when you like.

206-362-9200

31420 365th Dr NE, Arlington

ellerierivercottages.com

Lil'Norski B&B

A deluxe breakfast and a beautiful secluded scene on the Stillaguamish River, makes this getaway a sweet place to stay. Sleeps 4, 2 bedrooms. No smoking/no pets.

360-435-9636

Arlington

lilnorski.com

Mountain Loop B&B

3 rooms. Full breakfast included. Covered outdoor dog kennels.

360-691-4760

30528 Mt. Loop Highway, Granite Falls

www.mlnbnb.com

Mystic Mountain B&B

Mystic Mountain Bed & Breakfast is in a restored 1922 Dairy Barn, which offers "The Loft" with two private rooms and an open shared living space and shared full bath. The country themed living room offers a pellet stove for warmth, comfortable seating, a television to watch movies and the ambiance of the old west.

360-435-5888

29909 Oso Loop Rd., Arlington

www.mysticmountainbnb.com

CABINS AND VACATION RENTALS

Coastal Communities

Kayak Kottage

Kayak County Park offers a unique 3-bedroom Craftsman-style vacation house on a bluff overlooking Puget Sound. Max. 7 people.

Snohomish County Parks: 425-388-6600

15610 Marine Drive, Stanwood

snohomishcountywa.gov/Facilities

Lake Goodwin Resort Cabins

All of our cabins have microwave ovens and outdoor barbecue grills. The main cabin has 1 bedroom, 1 bathroom, and 2 hideaway beds. The kitchen has a stove and a refrigerator. 3 smaller cabins have 1 living room and 1 bathroom.

360-652-8169

4726 Lakewood Road, Stanwood
lakegoodwinresort.com

Yurt Village at Kayak Point County Park

Camping in modern style dome tents that can accommodate up to five campers.

425-388-6600

15610 Marine Drive, Stanwood
snohomishcountywa.gov/Facilities

Skykomish—Snohomish

A Cabin On the Sky

On the Skykomish River in Index. Sleeps up to four people. Hot tub, free wifi, fire bowl on deck.

360-793-0100

800 Ave., A, Index
acabinonthesky.com

A River Runs Through It

Off Highway 2 near Index on Index Creek in Baring. Hot tub, fire pit. Sleeps up to four people.

360-569-2799 or 877-325-5881 | Baring
greatcabins.com/riverruns/

A Riverside Retreat

This 2 bedroom vacation rental property stretches over 5 city lots, and is perfectly perched along the crystal clear waters of the Skykomish River. Hot tub, covered porch. Sleeps four.

206-429-5210

207 Avenue A, Index
www.ariversideretreat.com

Bonny Sky Lodge

One hour NE of Seattle in Index. Wonderfully private location, surrounded by trees. Hot tub, internet. Accommodates a small group/family, max. of 10 people. 3 Bedrooms, 2 Bathrooms

509-996-2148 or 800-422-3048 | Index
centralreservations.net/lodging/bonnysky

Cabins at Flowing Lake County Park

Escape to a cozy cabin in the woods. Each cabin comes furnished with a futon and/or bunk bed which sleep 5, table and 4 chairs. Snohomish County Parks.

425-388-6600

17900 48th St. SE, Snohomish
www.snohomishcountywa.gov/Facilities

Evergreen Mountain Lookout

The Evergreen Lookout is available July through October weather permitting. Availability is limited to weekdays through the first week of October. Reservations are awarded on a first come first serve basis. Cost is \$50 per night plus deposit. Make reservations with www.recreation.gov or after September 17 at the Skykomish Ranger District.

360-677-2414 | Snohomish

www.fs.usda.gov/recarea/mbs/recreation/recarea/?recid=18042

Maggie's Cabins

Beautiful knotty pine cabin on 100 feet of scenic Skykomish River, in the Mt. Index Valley, 25 miles from Stevens. Covered porch, hot tub, 2 bedrooms, 1 bath. Maximum occupancy is four. Also available nearby is another 2 bedroom cabin and a small lodge.

360-223-0392 | Baring

www.thecabinatbaring.com

Wallace Falls Cabins

Wallace Falls State Park. Five cabins in Wallace Falls State Park near trails & lake. Sleeps up to five people per cabin.

888-CAMPOUT or 888-226-7688

14503 Wallace Falls Rd., Gold Bar
washington.goingtocamp.com

Wild Sky Ranch

The Wild Sky Ranch sits on a 6-acre property on the Skykomish River, in Index, Washington. Once a Llama Farm, it has been lovingly remodeled to include three rustic cabins and a small conference center. The property also has a volleyball/badminton court, a pickleball court, a lookout with a barbeque, and multiple fire pits. The cabins can be rented individually or as a group. The property would

be wonderful to host a small group/families for a memorable weekend. The accommodations sleep a total of 10 guests, more could camp on the property.

425-785-5983

20125 Inter Mountain Park Rd., Index
wildskyranch.com

Stillaguamish—Sauk

Cabin at Mount Pilchuck

Off the Mountain Loop Hwy in the Mt. Baker Snoqualmie Nat'l Forest. Cabin overlooks the river. Great area for family reunions, and more. Sleeps six.

425-754-5111

9829 353rd Dr NE, Granite Falls
www.mountpilchuck.com

Paca Pride Guest Ranch

Camping/retreat experience with rustic resort comfort; from spaces for tent camping to completely furnished accommodations in a guest room at the main lodge to a decked out yurt.

360-691-3395

28311 Mountain Loop Highway, Granite Falls
www.pacapride.com

VACATION RENTAL WEBSITES

Airbnb

Various locations

airbnb.com/s/Snohomish-County

Home Away (AKA- VRBO)

Many of Snohomish County rental cabins and homes are listed on this site. Over 100 beautiful rentals in all price ranges.

www.homeaway.com

www.vrbo.com

Vacation Rental Cabins

Over 15 rental cabins available within Snohomish County. Includes a Farm house, cottages, waterfront cabins, with amenities such as hot tubs, fire pits, pet-friendly and beautiful views. Sleeping availability from 1 up to 14 people.

206-219-6427 | Various locations
vacationrentalcabins.com



PARKS & CAMPGROUNDS

RIVER MEADOWS PARK

PARKS AND CAMPGROUNDS

For more information, contact:
425-388-6600
snohomishcountywa.gov/1082/campgrounds

Coastal Communities

Wenberg County Park, Stanwood
425-388-6600

Kayak Point County Park, Stanwood
425-388-6600

Skykomish—Snohomish

Wallace Falls State Park, Gold Bar
360-793-8784 / 888-226-7688
parks.wa.gov/289/Wallace-Falls

Flowing Lake County Park, Snohomish
425-388-6600

Stillaguamish—Sauk

Mount Baker—Snoqualmie National Forest
877-833-6777

fs.usda.gov/recmain/mbs/recreation

River Meadows County Park, Arlington
425-388-6600

Squire Creek, Arlington
425-388-6600

RV PARKS

Urban Basecamp

Lake Pleasant RV Park, Bothell
425-487-1785

goodsamcamping.com.s3.amazonaws.com/gsparks/LakePleasant/LakePleasant

Lakeside RV Park, Everett
425-347-2970 or 800-468-7275
lakesidervpark.net

Maple Grove RV Resort, Everett
425-423-9608 or 866-793-2200
maplegrovervresort.com

Twin Cedars RV Park, Lynnwood
425-742-5540
twincedarsrvpark.business.site

Coastal Communities

Cedar Grove Shores RV Park, Stanwood
360-652-7083 or 866-342-4981
cgsrvpark.com

Harbour Pointe RV Park, Everett
425-789-1169
harbourpointervpark.com

Lake Goodwin Resort, Stanwood
360-652-8169 or 800-242-8169
lakegoodwinresort.com/rv-camping-areas

Skykomish—Snohomish

Evergreen State Fairgrounds, Monroe
360-805-6727 or 425-388-6600
evergreenfair.org/142/RV-Park

Snohomish RV & Mobile Home Park
360-568-9433
rvparking.com/wa/snohomish/snohomish-mobile-home-and-rv-park

Stillaguamish—Sauk

Cascade Kamloops Trout Farm & RV Park, Darrington

360-436-1003
cascadekamloops.com

Emerald Springs RV Park, Arlington
360-688-3642
emeraldspringsrv.com

Lake Ki RV Resort, Arlington
360-652-0619
lakekiresort.com

Smokey Point Mobile Home/RV Park, Arlington
360-387-0199
smokeypointrv.com/Home.html



GETTING HERE

PAINE FIELD AIRPORT TERMINAL

By Air

Paine Field Airport Terminal (PAE) started commercial service with Alaska and United Airlines in spring 2019. Offering 24 daily non-stop flights from major cities in the western United States, Paine Field is a quick and easy way to fly into the Seattle area.

Sea-Tac International Airport (SEA) is located approximately 27 miles south of Seattle NorthCountry.

By Car

Interstate 5 provides access from the north and south; Interstates 90 and 405 access I-5 from the southeast. State Highway 2 provides access from the northeast.

By Train or Bus

Served by Amtrak, Northwest Trailways and Greyhound Bus Lines. All local and regional buses have bike racks.

By Ferry

Two ferry terminals serve Whidbey Island and the Kitsap Peninsula. Washington State ferries now takes reservations for some routes including San Juan Islands at wsdot.wa.gov/ferries or call 888-808-7977.

The Paine Field Experience

Seattle NorthCountry's new design-forward terminal offers visitors a different kind of travel experience. With design features like individual bathrooms with full-length mirrors and Bose speakers with acoustic ceilings custom-designed by Swiss sound engineers, every detail has been considered in this modern terminal.



Get from your ride to your gate in minutes



30 Hotels within 10 miles



Seattle's Caffe Vita coffee



Beecher's "World's Best" Mac and Cheese



Beecher's Pike Place grilled-to-order sandwiches



Upper Case Wine Bar



Covered jet bridges



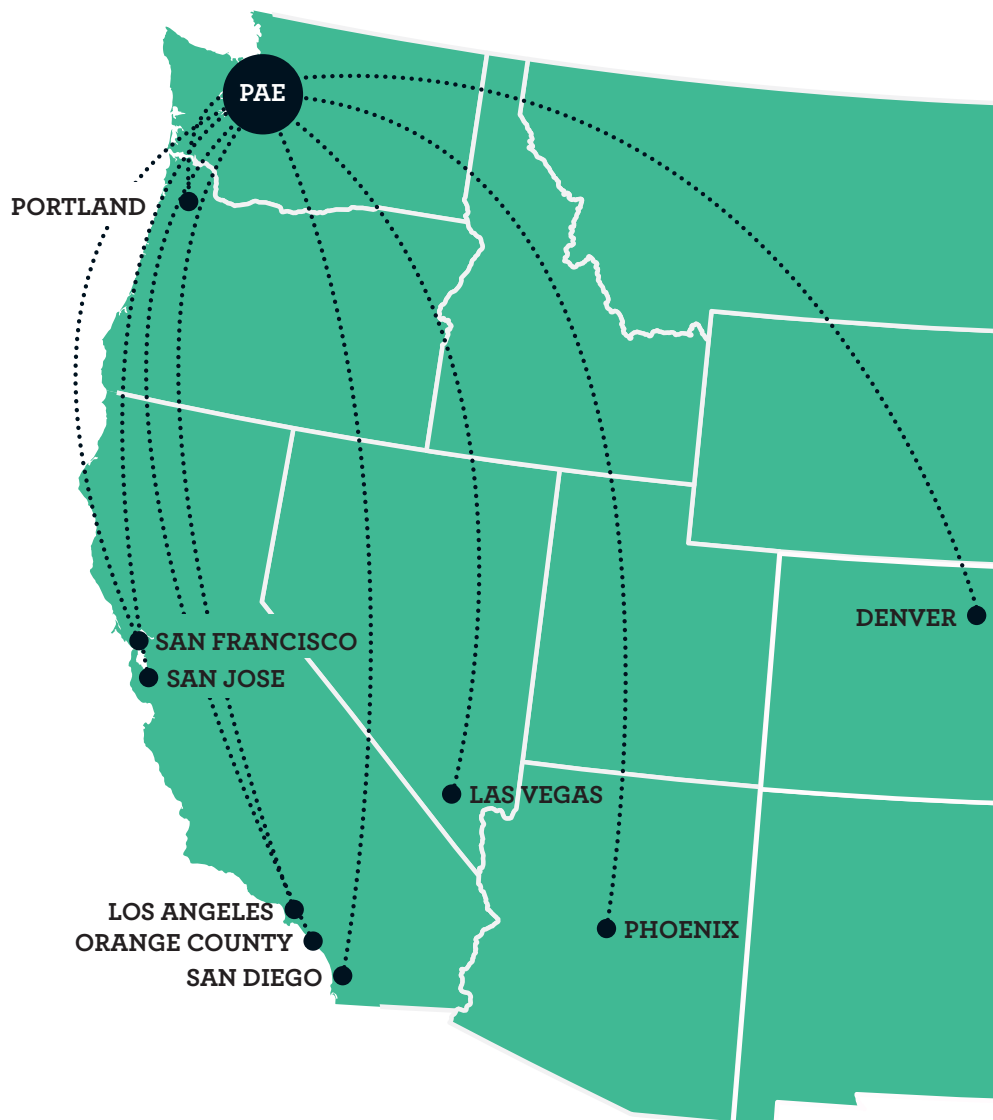
Valet parking and pay-by-phone parking options

24 Daily Non-Stop Flights

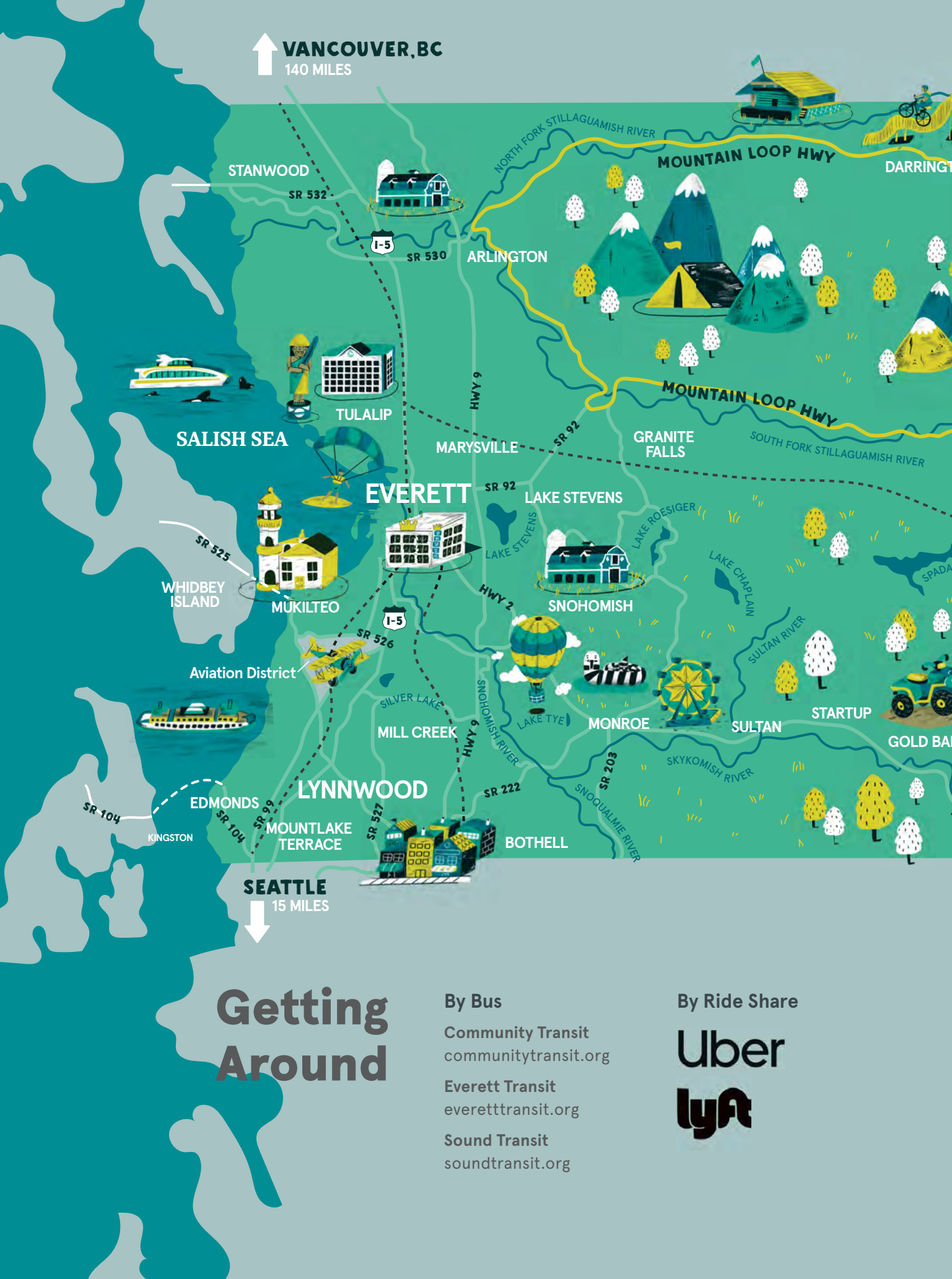
Paine Field currently offers service to nine locations, including Portland (PDX), San Francisco (SFO), San Jose (SJC), Las Vegas (LAS), Los Angeles (LAX), Orange County (SNA), San Diego (SAN), Phoenix (PHX) and Denver (DEN). Served by Alaska and United.

MILES FROM EVERETT

Bellevue	28
Bellingham	61
Olympia	87
Seattle	25
Sea Tac Airport	49
Spokane	279
Stevens Pass	65
Tacoma	60
Vancouver, B.C.	129
Portland, OR	200



VANCOUVER, BC
140 MILES



Getting Around

By Bus

Community Transit
communitytransit.org

Everett Transit
everetttransit.org

Sound Transit
soundtransit.org

By Ride Share

Uber
lyft



TRANSPORTATION INFORMATION

Amtrak	800-USA-RAIL
Community Transit	800-562-1375
Paine Field - Snohomish County Airport paineairport.com	425-353-2110
PAE Airport Terminal flypaineairport.com	425-622-9040
Port Of Edmonds Portofedmonds.org	425-775-4588
Seaview Airport Service Seaviewairport.com	888-743-8390
Shuttle Express Shuttleexpress.com	800-487-7433
Washington State Ferries Wsdot.wa.gov/Ferries	888-808-7977

NATIONAL FOREST & WASHINGTON STATE PARKS INFORMATION

Mt. Baker-Snoqualmie National Forest	425-783-6000 800-627-0062
Washington State Parks Information	360-902-8844

CHAMBERS OF COMMERCE/ VISITOR INFORMATION CENTERS

Bothell Kenmore Chamber & VIC	425-485-4353
Darrington City Hall	360-436-1131
Economic Alliance Snohomish County	425-743-4567
Edmonds Visitor Center	425-776-6711
Edmonds Chamber	425-670-1496
Gold Bar City Hall	360-793-1101
Granite Falls Chamber	360-302-3051
Index Town Hall	360-793-2488
Lake Stevens Chamber	425-334-0433
Lynnwood Chamber	425-563-7505
Marysville Tulalip Visitors Center and Chamber	360-659-7700
Monroe Chamber	360-794-5488
Mukilteo Chamber and VIC	425-347-1456
Sky Valley Visitors Center and Chamber (Index, Sultan)	360-793-0983
Snohomish Chamber	360-568-2526
Stanwood Chamber	360-629-0562
Stanwood Visitors Center	360-629-3888
Stilly Valley Chamber & Visitor Center	360-659-5453
Snohomish County Visitor Information Center at Boeing Future of Flight	425-438-8100 x.246



HOW TO HAVE A

Northwest Ferry Adventure

by: HENRY YARSINSKE JR

New York City has the subway, London has the double-decker bus, and Seattle NorthCountry has the ferry.

For over 65 years, ferries have been used to shuttle people from the island counties to the mainland. But these giant boats aren't just for the work crowd. Some of the best adventures start at ferry terminals and the towns around them. Come with us on two public boat trips that showcase Seattle NorthCountry beauty. From Mukilteo, tour pastoral and charming Whidbey Island, or after strolling through downtown Edmonds, grab the ferry to visit the Kitsap Peninsula and Olympic Peninsula.

FERRY 101 - WHAT TO KNOW BEFORE YOU RIDE

Ferry waits can be incredibly long during peak travel times. Washington State Ferries have cameras on their website, which is extremely helpful as you're planning your trip in route to Mukilteo. Walking on is the cheapest way to experience the ferry. Walk on prices for both the Mukilteo - Clinton and Edmonds - Kingston rides are just \$8.35 for a round-trip adult ticket.

Driving? The price for a roundtrip ticket for Mukilteo-Clinton starts at \$17.90 for car and driver (and an additional \$5.10 per adult passenger) for the 20 minute crossing, while Edmonds - Kingston will cost \$30.00 (and an additional \$8.50 per adult passenger) for the 30 minute crossing. You can pay either at the gate or online via Wave2Go. Keep your stub for your return trip.

Some ferry regulars choose to stay in their cars, but head above-deck to take in the view during the ride. You can even get a bite to eat and a beverage onboard. Pair a beer with a sausage, or maybe some Beecher's Mac n Cheese—a Seattle NorthCountry staple.

MUKILTEO - CLINTON FERRY

Before boarding, grab a quick bite to eat at Ivar's at the Mukilteo ferry terminal. The legendary Seattle-based fish and chips spot that's been in business for over 80 years. And since both the walk-up and the more upscale Ivar's at Mukilteo Landing are next door to each other, eating there was a no-brainer. If you're driving, as you leave Clinton, head to Langley, which is just ten minutes away. Langley is home to quaint shops and little cafes. It's the perfect spot to take in the island life.

EDMONDS - KINGSTON

Take a day trip to Kingston by way of the Edmonds ferry terminal. The city of Edmonds is filled with local shops and tasty spots to eat. Grab some breakfast in Edmonds before walking on to the ferry. The 30-minute ride to Kingston, another sleepy port town across the Salish Sea, will bring you to the walkable, historic downtown. Grab some ice cream or a steaming cup of coffee and enjoy the scenic views on your way back to Seattle NorthCountry.

For sailing schedules and fare information, contact www.wsdot.wa.gov/ferries or call 888-808-7977. ■

SEATTLE WHALE WATCHING TOURS

Experience the Thrill of Seeing **WHALES** in the Wild



34th
Anniversary
Family Business



Go whale watching in Seattle! The metro area now has its first-ever, half-day whale watching tour. See killer whales, humpback whales, and all the majestic wildlife throughout the Salish Sea on our new tour out of downtown Edmonds – just a few minutes north of Seattle. Give us 4 1/2 hours – we guarantee you'll see whales!



Reserve Online

PugetSoundExpress.com • 360-385-5288

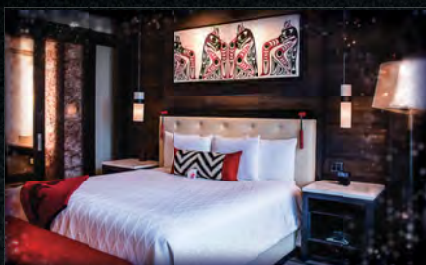
Port of Edmonds, Parking Area 9



ESCAPE

TO A DESTINATION OF PREMIUM LUXURY

Indulge in Washington's premier AAA Four-Diamond resort with eight restaurants, a luxurious spa and world-class shopping.



30 MINUTES NORTH OF SEATTLE
888.272.1111 | TULALIPCASINO.COM

