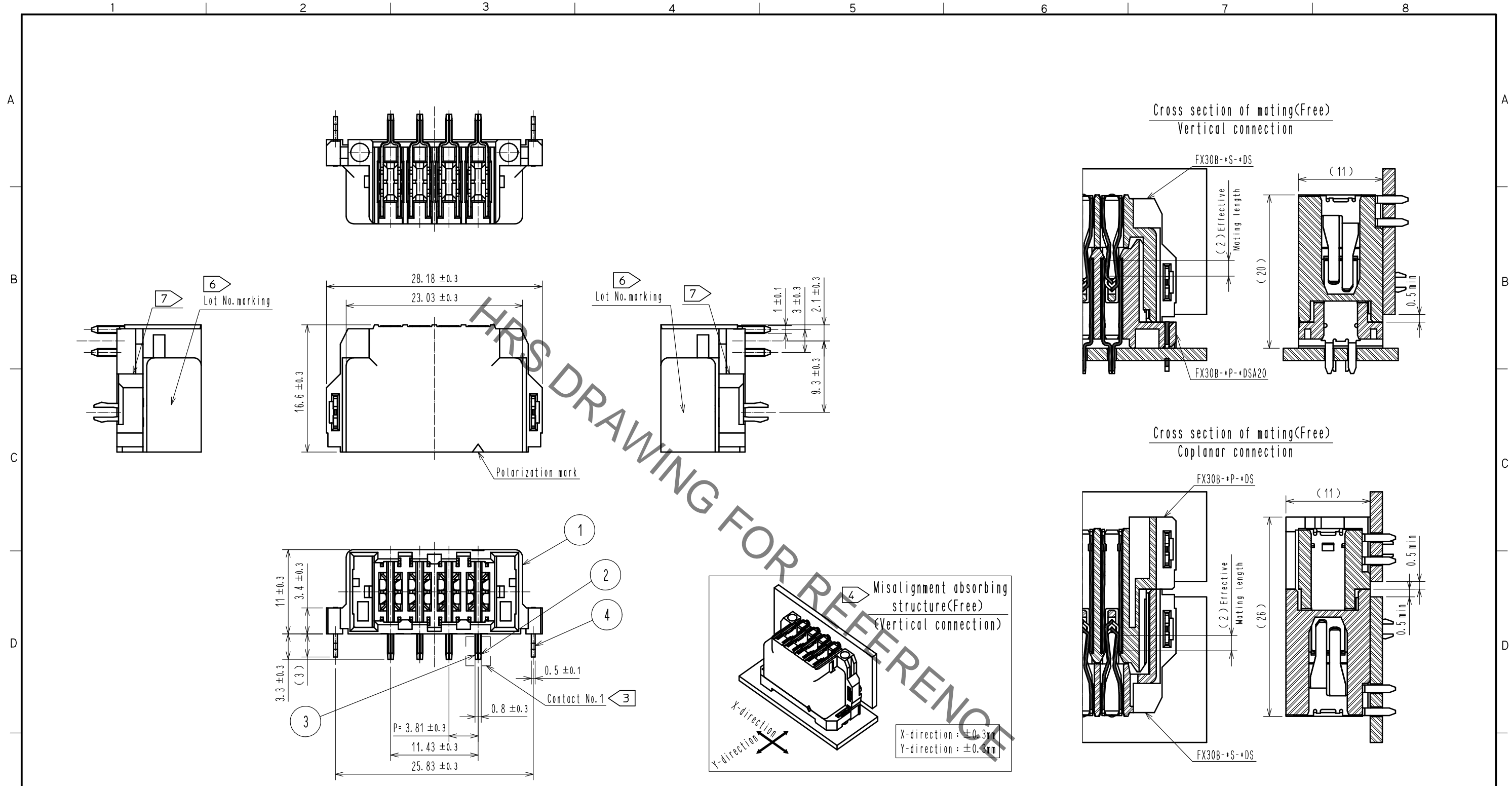


Jan.1.2021 Copyright 2021 HIROSE ELECTRIC CO., LTD. All Rights Reserved.
In case of consideration for using Automotive equipment / device which demand high reliability, kindly contact our sales window correspondents.



- Note
- 1 This product is packaged in tray. (30pcs/tray)
 - 2 Blemish and hit mark can be occurred through out the manufacturing process which doesn't affect quality level. Also, black spot could be observed on the surface of housing.
 - 3 For the contact No., adjacent two pairs of leads placed back-to-back (4 leads in total) compose one line.
 - 4 Misalignment absorbing range: $\pm 0.3 \text{ mm}$ max.
 - 5 The dimension in parentheses are for references.
 - 6 Lot No. is indicated at either one of the position as shown.
 - 7 Possible short shot and/or burr at the indicated area does not affect the product quality.
 - 8 UL (File No. E52653)
C-UL (File No. E52653)
TUV (Certificate No. R50275872) authorization article.

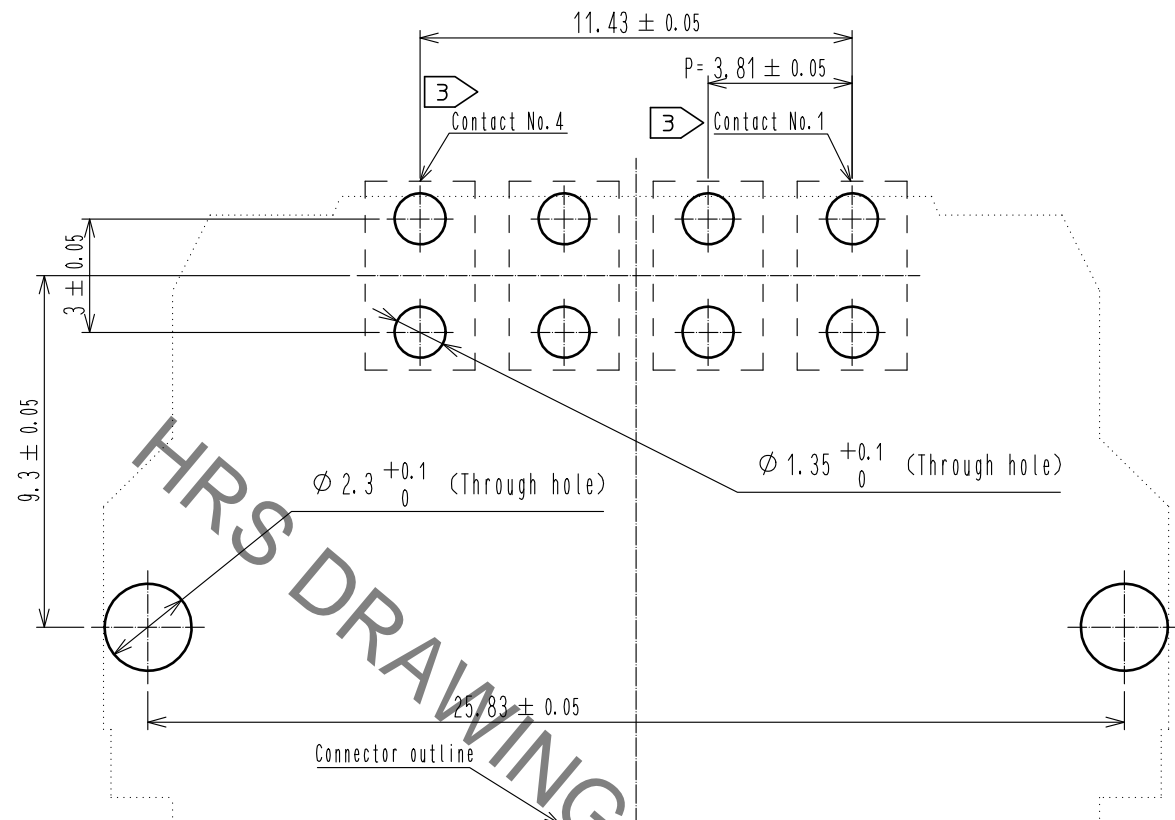


NO.	MATERIAL	FINISH . REMARKS	NO.	MATERIAL	FINISH . REMARKS
2	COPPER ALLOY	CONTACT AREA:GOLD-PLATING $0.1 \mu\text{m}$ LEAD AREA:TIN-PLATING $1.0 \mu\text{m}$ UNDER PLATING:NICKEL $1.0 \mu\text{m}$	4	PHOSPHOR BRONZE	TIN-PLATING $3.0 \mu\text{m}$ UNDER PLATING:NICKEL $1.0 \mu\text{m}$
1	POLYAMIDE	BLACK UL94V-0	3	COPPER ALLOY	CONTACT AREA:GOLD-PLATING $0.1 \mu\text{m}$ LEAD AREA:TIN-PLATING $1.0 \mu\text{m}$ UNDER PLATING:NICKEL $1.0 \mu\text{m}$
5			5	POLYSTYRENE	

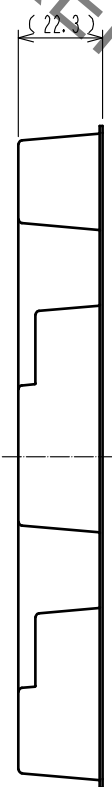
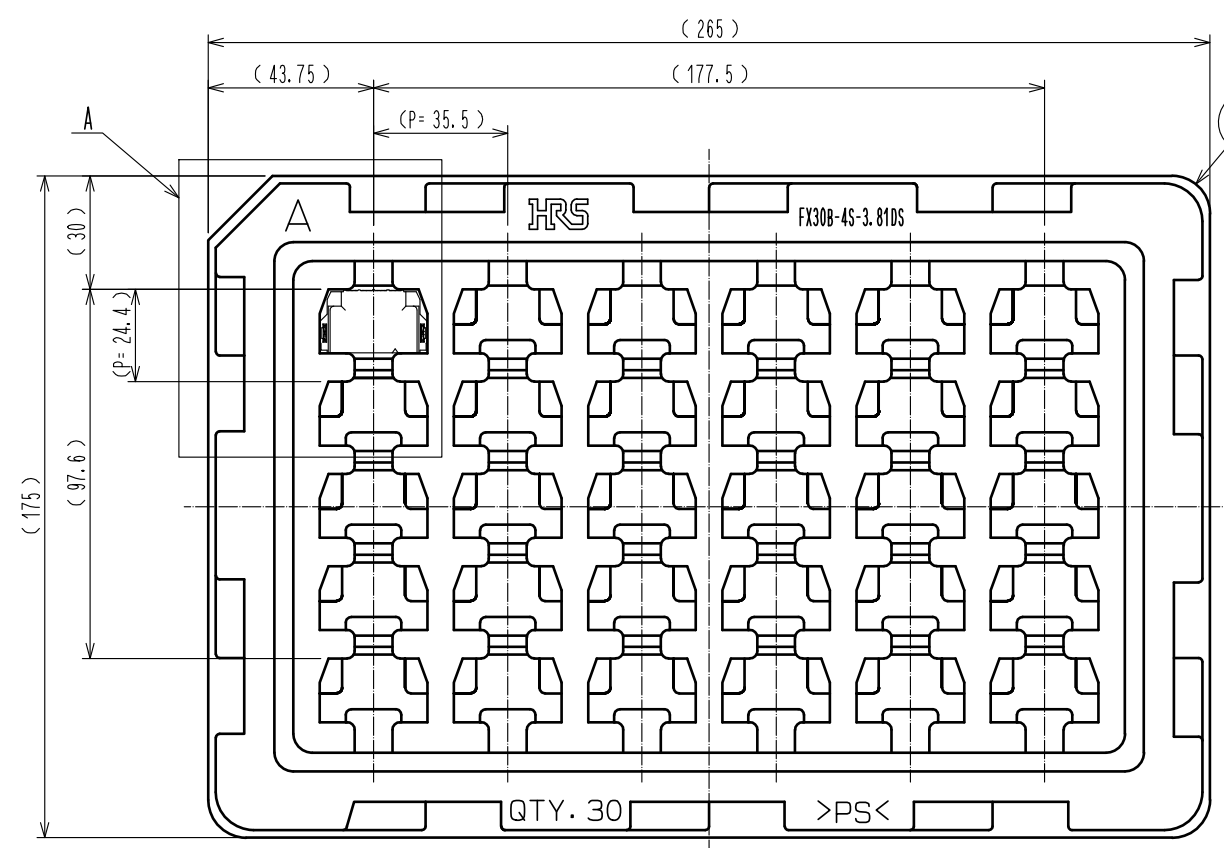
UNITS	SCALE	COUNT	DESCRIPTION OF REVISIONS	DESIGNED	CHECKED	DATE
mm	2 : 1	1	DIS-F-00006019	AK. IWAHORI	HT. YAMAGUCHI	20200406
APPROVED : HS. OKAWA			20130313	DRAWING NO. EDC3-347278-00		
CHECKED : KI. HIROKAWA			20130312	PART NO. FX30B-4S-3.81DS		
DESIGNED : DK. AIMOTO			20130311	CODE NO. CL570-3602-1-00		
DRAWN : DK. AIMOTO			20130311	1/2		

Jan.1.2021 Copyright 2021 HIROSE ELECTRIC CO., LTD. All Rights Reserved.
 In case of consideration for using Automotive equipment / device which demand high reliability, kindly contact our sales window correspondents.

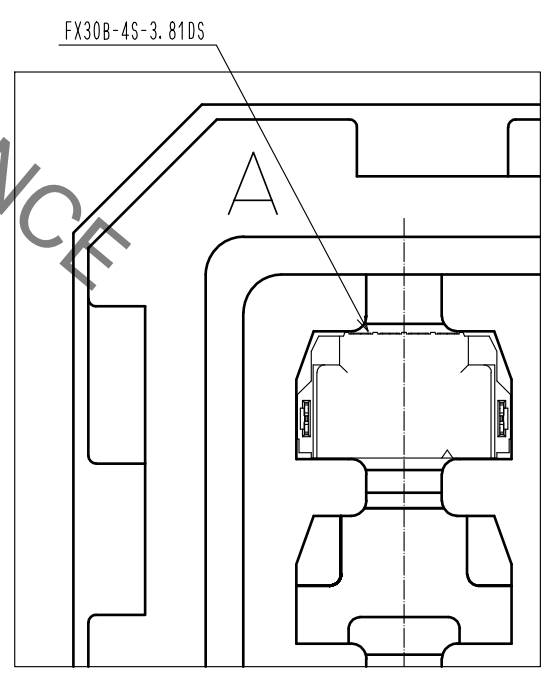
Recommended hole pattern dimension of PCB(5:1)
 (Connector mounting side, PCB thickness:t=1.6mm)



1 Drawing for packaging(1:2)



A(1:1)



HRS	DRAWING NO.	EDC3-347278-00	2/2
	PART NO.	FX30B-4S-3.81DS	
	CODE NO.	CL570-3602-1-00	