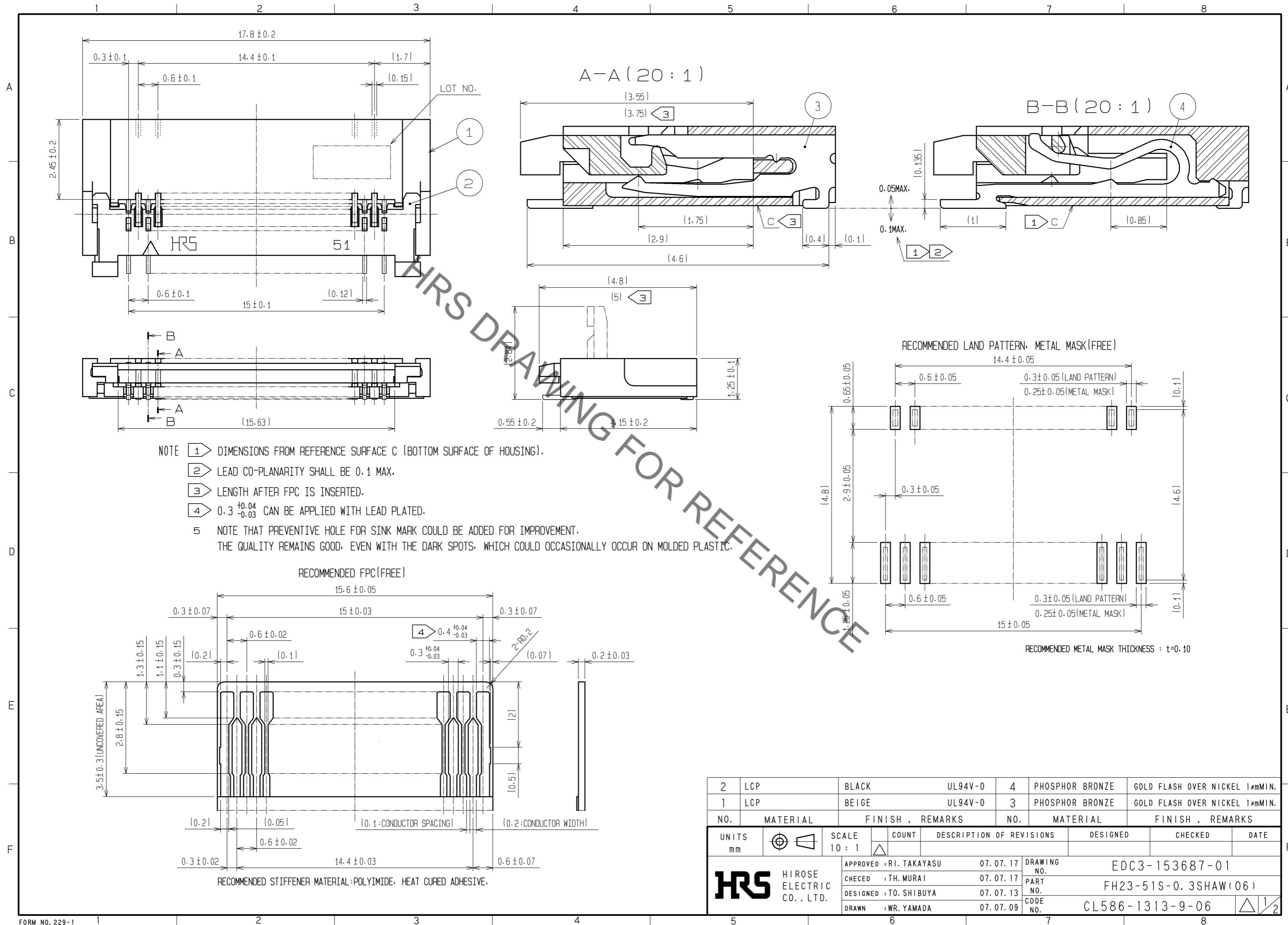
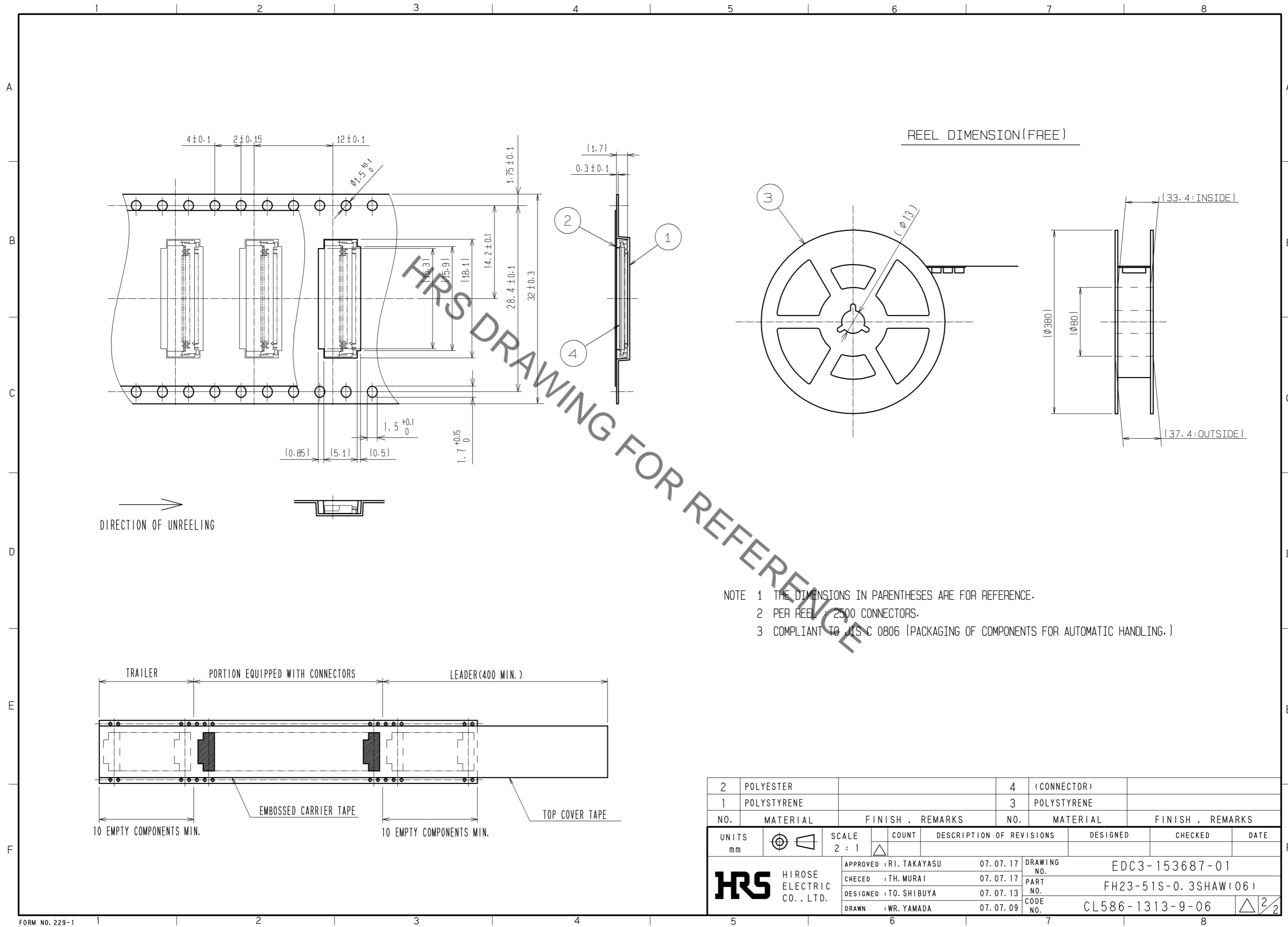


Jan.1.2021 Copyright 2021 HIROSE ELECTRIC CO., LTD. All Rights Reserved.  
 In case of consideration for using Automotive equipment / device which demand high reliability, kindly contact our sales window correspondents.



2	LCP	BLACK	UL94V-0	4	PHOSPHOR BRONZE	GOLD FLASH OVER NICKEL 1μmMIN.		
1	LCP	BEIGE	UL94V-0	3	PHOSPHOR BRONZE	GOLD FLASH OVER NICKEL 1μmMIN.		
NO.	MATERIAL	FINISH	REMARKS	NO.	MATERIAL	FINISH . REMARKS		
UNITS mm		SCALE 10 : 1	COUNT 	DESCRIPTION OF REVISIONS		DESIGNED	CHECKED	DATE
<b>HRS</b> HIROSE ELECTRIC CO., LTD.				APPROVED : RI. TAKAYASU	07.07.17	DRAWING NO. EDC3-153687-01		
				CHECED : TH. MURAI	07.07.17	PART NO. FH23-51S-0.3SHAW(06)		
				DESIGNED : TO. SHIBUYA	07.07.13	CODE NO. CL586-1313-9-06		
				DRAWN : WR. YAMADA	07.07.09	1/2		

Jan.1.2021 Copyright 2021 HIROSE ELECTRIC CO., LTD. All Rights Reserved.  
 In case of consideration for using Automotive equipment / device which demand high reliability, kindly contact our sales window correspondents.



NOTE 1 THE DIMENSIONS IN PARENTHESES ARE FOR REFERENCE.  
 2 PER REEL : 2500 CONNECTORS.  
 3 COMPLIANT TO JIS C 0806 (PACKAGING OF COMPONENTS FOR AUTOMATIC HANDLING.)

2	POLYESTER		4	(CONNECTOR)	
1	POLYSTYRENE		3	POLYSTYRENE	
NO.	MATERIAL	FINISH . REMARKS	NO.	MATERIAL	FINISH . REMARKS
UNITS	mm	SCALE	2 : 1	COUNT	△
APPROVED : RI. TAKAYASU		07.07.17	DRAWING NO. EDC3-153687-01		
CHECKED : TH. MURAI		07.07.17	PART NO. FH23-51S-0.3SHAW(06)		
DESIGNED : TO. SHIBUYA		07.07.13	CODE NO. CL586-1313-9-06		
DRAWN : WR. YAMADA		07.07.09	△ 2/2		