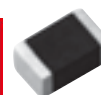


Multilayer Power Inductors

Type: **ELGTEA**



This series is not a recommended product.
Not recommended for new design.



Features

- Superior DC current bias characteristics by the original laminating process technology
- Magnetic shielded structure
- Small and thin structure (2.0×1.25×1.0mm max.)
- RoHS compliant

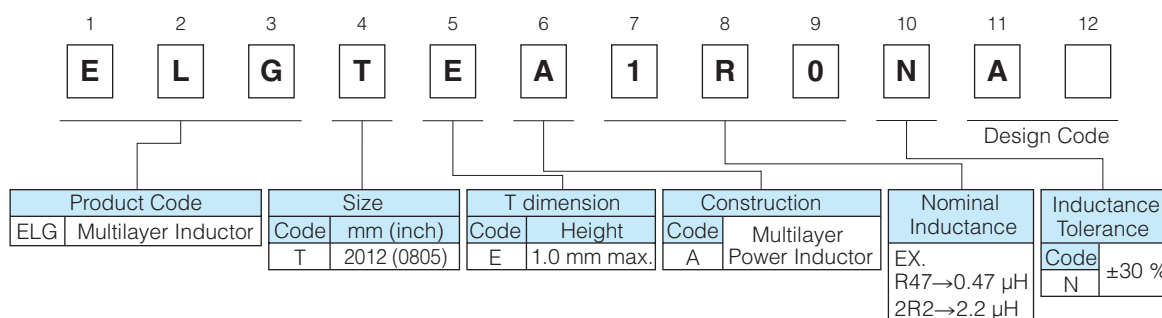
Recommended Applications

- DC/DC converter circuit use of the small portable device
Smart phone, mobile phone, DSC .

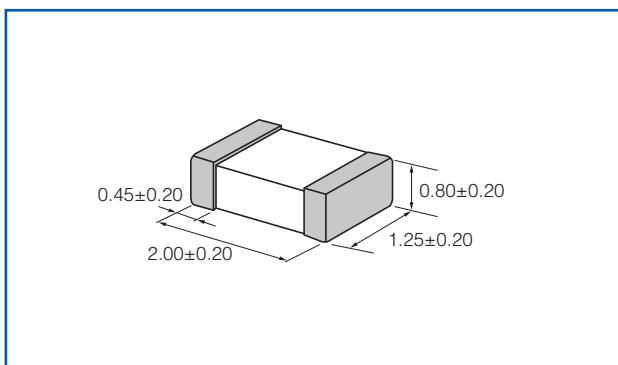
Standard Packing Quantity

- 4000 pcs./Reel

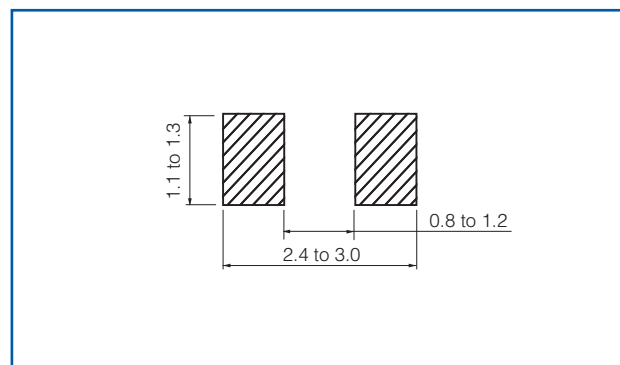
Explanation of Part Numbers



Dimensions in mm (not to scale)



Recommended Land Pattern in mm (not to scale)



Ratings and Characteristics

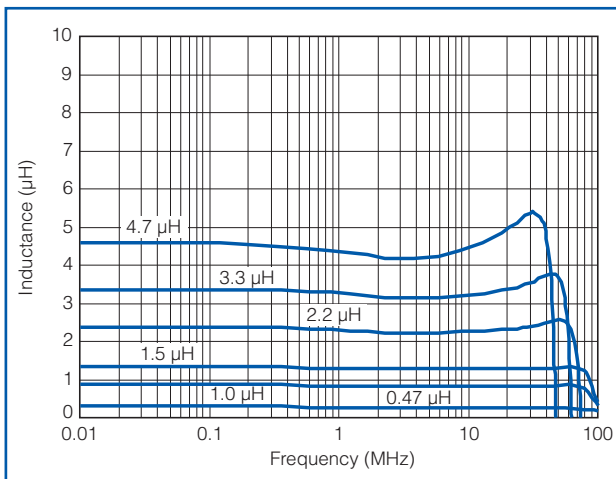
Part Number	Inductance at 1 MHz		DC Resistance at 20 °C (Ω) max.	Rated Current* ¹ (A)	Self-resonant Frequency* ² (MHz)
	(μH)	Tol.			
ELGTEAR47NA	0.47	±30 %	0.10	1.2	126
ELGTEA1R0NA	1.0	±30 %	0.15	1.0	80
ELGTEA1R5NA	1.5	±30 %	0.18	1.0	80
ELGTEA2R2NA	2.2	±30 %	0.20	0.8	55
ELGTEA3R3NA	3.3	±30 %	0.25	0.8	50
ELGTEA4R7NA	4.7	±30 %	0.30	0.8	33

● Operating Temperature Range : -40 to 125 °C (Including self-temperature rise)

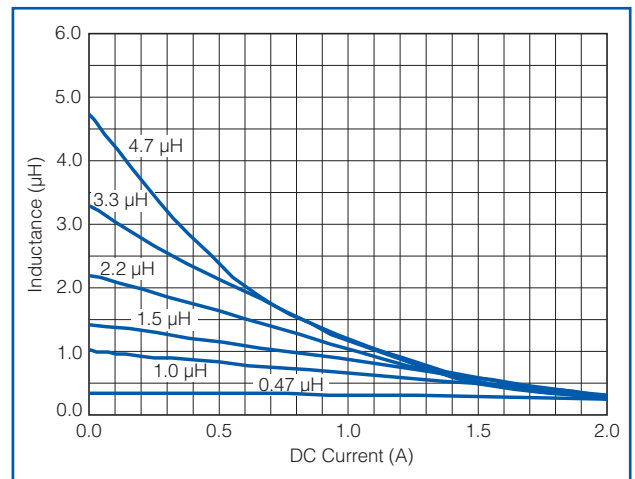
*¹ This indicates the value of current when temperature rise dt/t=40 °C (at 20 °C).

*² Reference data

Inductance frequency characteristics

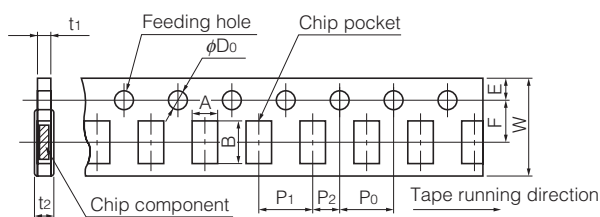


DC current bias characteristics



Packaging Methods (Taping)

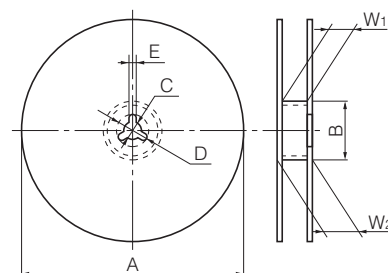
● Punched Carrier Taping (Pitch 4mm)



(Unit : mm)

Symbol	A	B	W	F	E	P ₁	P ₂	P ₀	φD ₀	t ₁	t ₂
Dim (mm)	1.65 ±0.20	2.4 ±0.2	8.0 ±0.2	3.50 ±0.05	1.75 ±0.10	4.0 ±0.1	2.00 ±0.05	4.0 ±0.1	1.5 +0.1/0	1.2 max.	1.4 max.

● Taping Reel

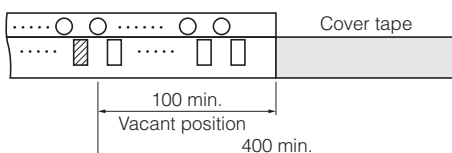


(Unit : mm)

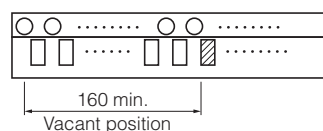
Symbol	φA	φB	C	D	E	W ₁	W ₂
Dim (mm)	180 ⁰ / ₋₃	60.0 ^{+1.0} / ₀	13.0±0.5	21.0±0.8	2.0±0.5	9.0 ^{+1.0} / ₀	11.4±1.0

● Leader Part and Taped End

Leader part



Tape end



(Unit : mm)