

PCB terminal block - PTQ 0,3/ 2-2,5 THR R32 - 1702610

Please be informed that the data shown in this PDF Document is generated from our Online Catalog. Please find the complete data in the user's documentation. Our General Terms of Use for Downloads are valid (<http://phoenixcontact.com/download>)




PCB terminal block, nominal current: 4 A, nom. voltage: 160 V, pitch: 2.5 mm, number of positions: 2, connection method: Displacement connection, mounting: THR soldering, conductor/PCB connection direction: 0°, color: black

Why buy this product

- ✓ Connection without conductor pretreatment for huge time savings
- ✓ Finger-operated QUICKON insulation displacement connection enables repeated conductor connection
- ✓ Designed for integration into the SMT soldering process
- ✓ Supplied in tape-on-reel packing according to IEC 60286-3 for automated mounting
- ✓ Anti-rotation pin supports positioning on the PCB



Key Commercial Data

Packing unit	250 STK
Minimum order quantity	250 STK
GTIN	 4 046356 599498
GTIN	4046356599498

Technical data

Dimensions

Length [l]	17.55 mm
Pitch	2.5 mm
Dimension a	2.5 mm
Width [w]	7 mm
Constructional height	8 mm
Height [h]	8 mm
Solder pin [P]	2 mm
Pin dimensions	0,9 x 0,4
Pin spacing	2.5 mm
Hole diameter	1.1 mm

PCB terminal block - PTQ 0,3/ 2-2,5 THR R32 - 1702610

Technical data

General

Range of articles	PTQ 0,3/...-THR
Insulating material group	IIIa
Rated surge voltage (III/3)	2.5 kV
Rated surge voltage (III/2)	2.5 kV
Rated surge voltage (II/2)	2.5 kV
Rated voltage (III/3)	160 V
Rated voltage (III/2)	160 V
Rated voltage (II/2)	200 V
Nominal current I _N	4 A
Nominal cross section	0.34 mm ²
Maximum load current	4 A
Insulating material	LCP
Flammability rating according to UL 94	V0
Number of positions	2

Connection data

Conductor cross section solid min.	0.14 mm ²
Conductor cross section solid max.	0.34 mm ²
Conductor cross section flexible min.	0.14 mm ²
Conductor cross section flexible max.	0.34 mm ²
Conductor cross section AWG min.	26
Conductor cross section AWG max.	22
Wire diameter incl. insulation	1.6 mm (Terminal block is tested with PVC insulation - other insulation materials available on request)

Standards and Regulations

Connection in acc. with standard	CUL
Flammability rating according to UL 94	V0

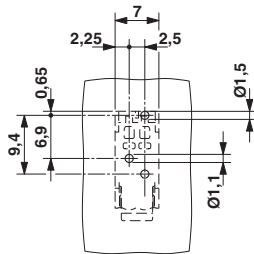
Environmental Product Compliance

China RoHS	Environmentally friendly use period: unlimited = EFUP-e
	No hazardous substances above threshold values

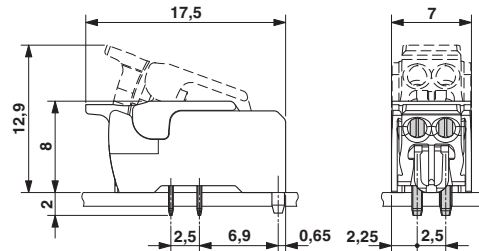
Drawings

PCB terminal block - PTQ 0,3/ 2-2,5 THR R32 - 1702610

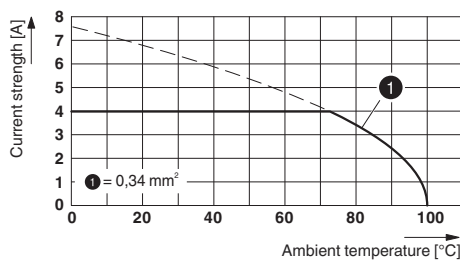
Drilling diagram



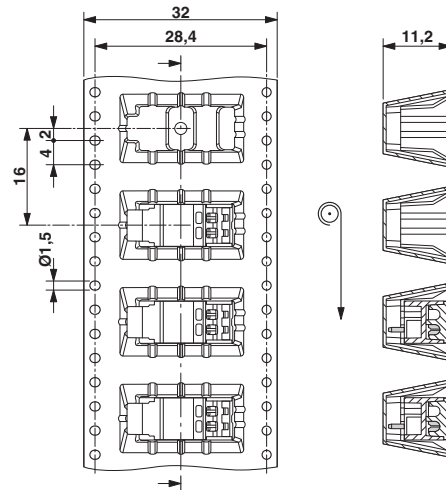
Dimensional drawing



Diagram



Dimensional drawing



Type: PTQ 0,3/...-2,5(-L) THR R32

Approvals

Approvals

Approvals

VDE Gutachten mit Fertigungsüberwachung / CCA / EAC / cULus Recognized

Ex Approvals

Approval details

VDE Gutachten mit Fertigungsüberwachung		http://www2.vde.com/de/Institut/Online-Service/ VDE-gepruefteProdukte/Seiten/Online-Suche.aspx	40034315
mm²/AWG/kcmil	0.2		


PCB terminal block - PTQ 0,3/ 2-2,5 THR R32 - 1702610

Approvals

Nominal current IN	4 A
Nominal voltage UN	130 V

CCA	CCA/ DE1 34151
mm ² /AWG/kcmil	0.2
Nominal current IN	4 A
Nominal voltage UN	130 V

EAC		B.01742
-----	---	---------

cULus Recognized		http://database.ul.com/cgi-bin/XYV/template/LISEXT/1FRAME/index.htm	E60425-20110108
		B	
mm ² /AWG/kcmil		24	
Nominal current IN		2 A	
Nominal voltage UN		150 V	

Phoenix Contact 2018 © - all rights reserved
<http://www.phoenixcontact.com>

PHOENIX CONTACT GmbH & Co. KG
Flachsmarktstr. 8
32825 Blomberg
Germany
Tel. +49 5235 300
Fax +49 5235 3 41200
<http://www.phoenixcontact.com>