

THIS DRAWING IS UNPUBLISHED.

RELEASED FOR PUBLICATION

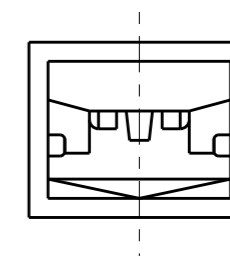
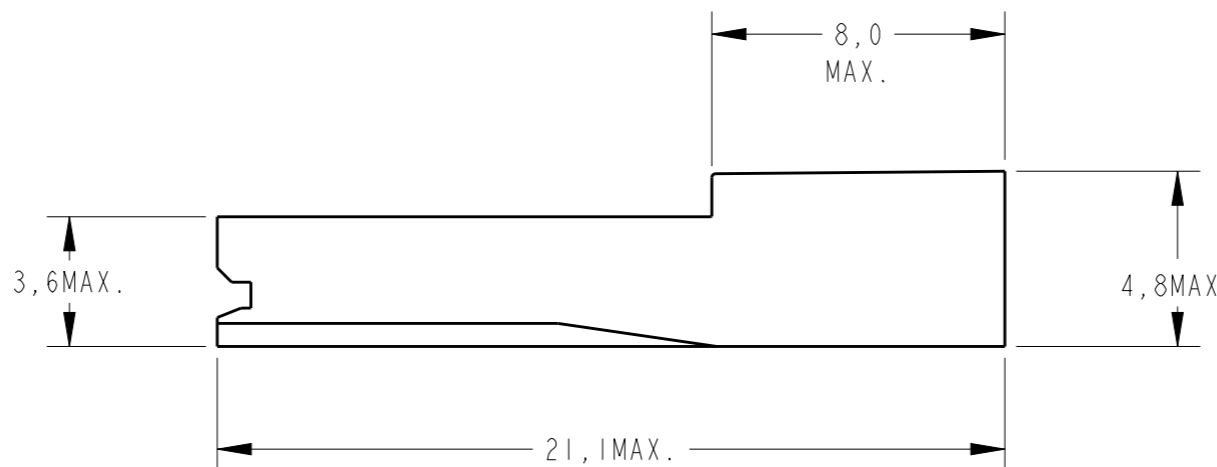
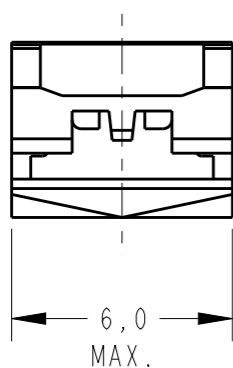
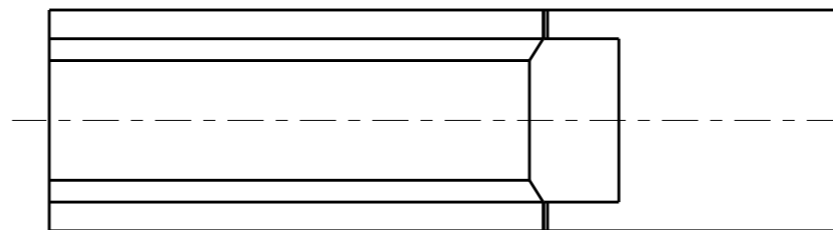
20

© COPYRIGHT 20 BY -

ALL RIGHTS RESERVED.

REVISIONS

P	LTR	DESCRIPTION	DATE	DWN	APVD
F1		REV. BY ECO 16-003733	11MAR2016	HC	WLS
F2		REV. BY ECO 18-012656	12AUG2018	HC	WLS
G		REVISED PER ECO-19-015171	08OCT2019	WLS	WLS



△ - MATÉRIA PRIMA CONFORME ESPECIFICAÇÃO IEC 60335-1, GWT 750°, SEM CHAMA.
 RAW MATERIAL ACC. TO SPEC IEC 60335-1, GWT 750°C, WITHOUT FLAME.

FINISH	MATERIAL	PART NUMBER
NATURAL	△ - PA 6.6 V-0	141628-5
PRETO / BLACK	PBT - TEMPERATURE RESISTANT	141628-4
OBSOLETE	AMARELO / YELLOW	PA 6.6 94 V2
		141628-3
	NATURAL	PA 6.6 94 V2
		141628-2
OBSOLETE	NATURAL	PA 6.6 94 V1
		141628-1

THIS DRAWING IS A CONTROLLED DOCUMENT.		DWN H.C. CANTER 29 JAN 2016	TE Connectivity	
DIMENSIONS: mm		CHK W.L. STEFANI 29 JAN 2016		
TOLERANCES UNLESS OTHERWISE SPECIFIED:		APVD - 29 JAN 2016	NAME FASTON REC. HSG. .110 SERIES	
0 PLC ±-	1 PLC ±0,3	PRODUCT SPEC 108-37094	SIZE A3	CAGE CODE -
2 PLC ±-	3 PLC ±-	APPLICATION SPEC -	DRAWING NO C-141628	RESTRICTED TO -
4 PLC ±-	ANGLES ±-	WEIGHT -	SCALE 5:1	
MATERIAL -	FINISH -	CUSTOMER DRAWING	SHEET 1	OF 1
			REV G	

Mouser Electronics

Authorized Distributor

Click to View Pricing, Inventory, Delivery & Lifecycle Information:

[TE Connectivity:](#)

[141628-2](#)