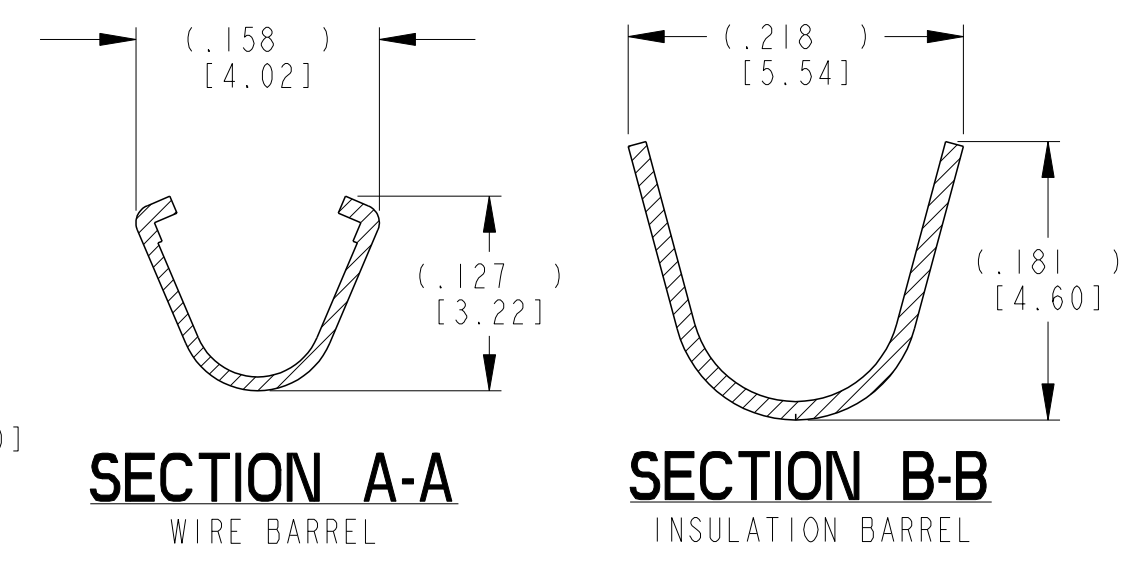
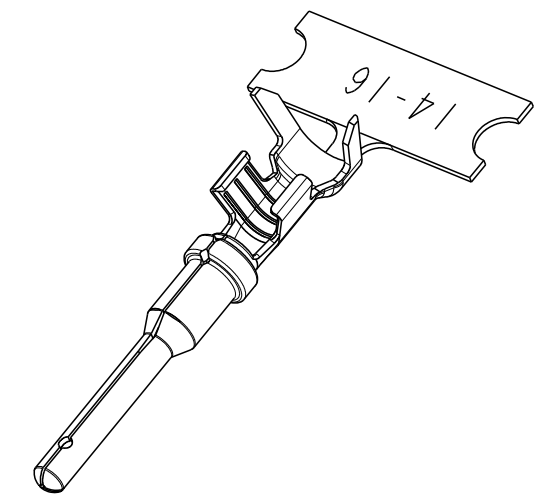
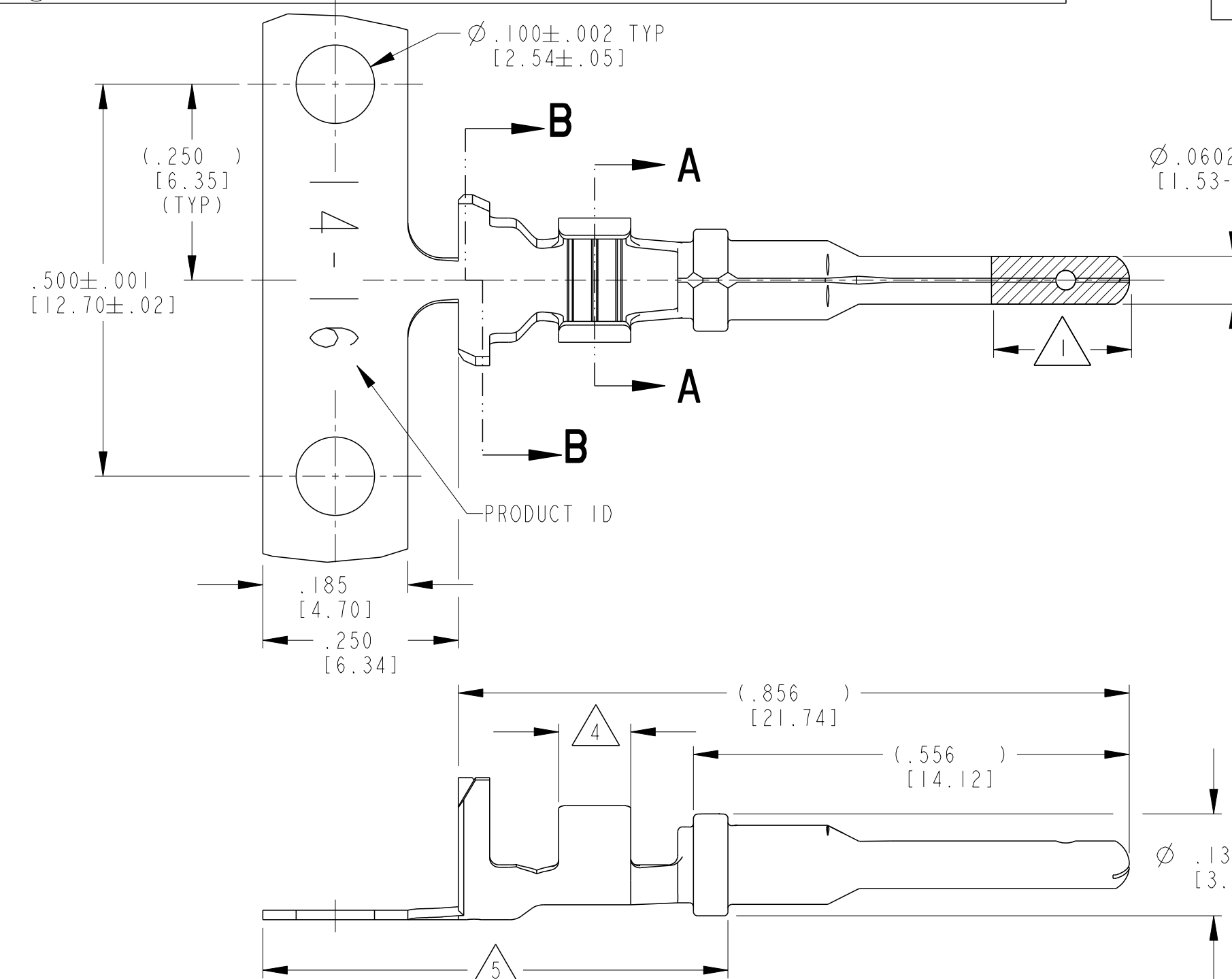


LOC	DIST	REVISIONS					
		P	LTR	DESCRIPTION	DATE	DWN	APVD
			F	REVISED PER ECO-15-007761	28MAY2015	RL	DM
			G	REVISED PER PCN E-20-008101	12JUN2020	DM	DM



- 5 TIN PLATING MAY BE IN THIS REGION.
  - 4 TIN PLATED REGION.
  - 3 MATERIAL: .012 [0.30] THICK COPPER ALLOY
  - 2. WIRE RANGE: 18 AWG TO 14 AWG [0.75-2.0 mm<sup>2</sup>]  
 INSULATION RANGE: Ø.095-.150 [Ø2.41-3.81]
  - 1 GOLD PLATED REGION.
- NOTES: UNLESS OTHERWISE SPECIFIED

TE INTERNAL PN	DEUTSCH PN	PLATING
1060-14-0122	1060-14-0122	Ni/Cu overall, Sn/Ni/Cu Wire Barrel
1060-14-0144	1060-14-0144	Selective Au, Ni/Cu overall, Sn/Ni/Cu Wire Barrel
1060-14-0177	1060-14-0177	Sn/Ni/Cu overall

THIS DRAWING IS A CONTROLLED DOCUMENT.

DIMENSIONS: INCHES [mm]	TOLERANCES UNLESS OTHERWISE SPECIFIED: 0 PLC ± 1 PLC ± 2 PLC ± 3 PLC ±.025 [0.64] 4 PLC ± ANGLES ±	DWN MICHAEL BLOOM 04NOV1999	TE Connectivity
		CHK VLADIMIR TOMSA 04DEC2000	
	APVD ROBIN REED 08DEC2000	NAME STAMPED CONTACT PIN SIZE 16	
	PRODUCT SPEC 108-151000 APPLICATION SPEC 114-151000	SIZE A3 CAGE CODE 4AFU8 DRAWING NO C=1060-14-01XX RESTRICTED TO -	
MATERIAL 3	FINISH SEE TABLE	WEIGHT 0.34 g	SCALE 6:1 SHEET 1 OF 1 REV G

Customer Drawing

# Mouser Electronics

Authorized Distributor

Click to View Pricing, Inventory, Delivery & Lifecycle Information:

[TE Connectivity:](#)

[1060-14-0122](#)