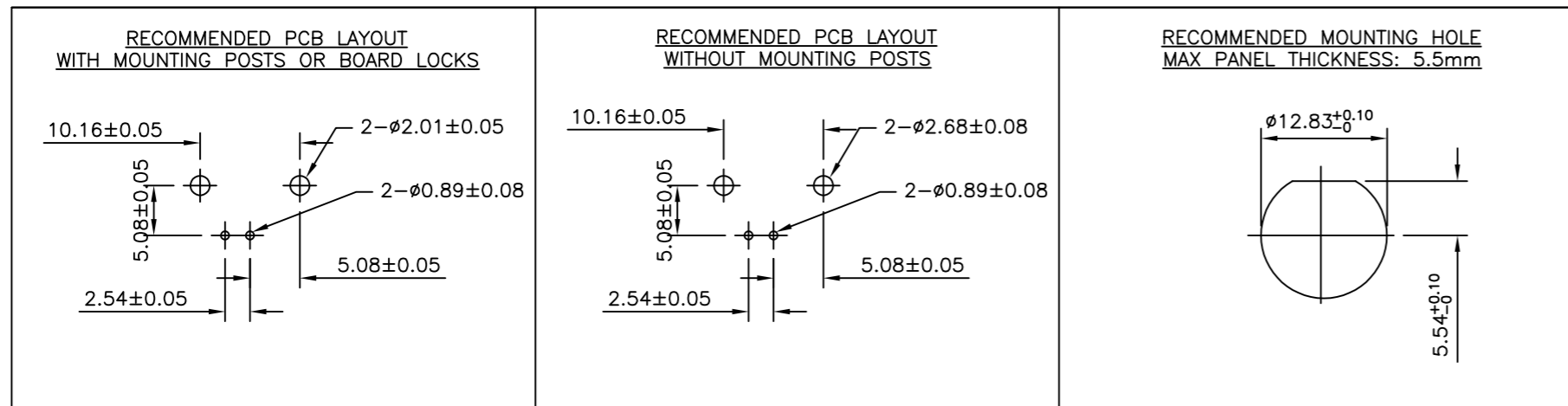
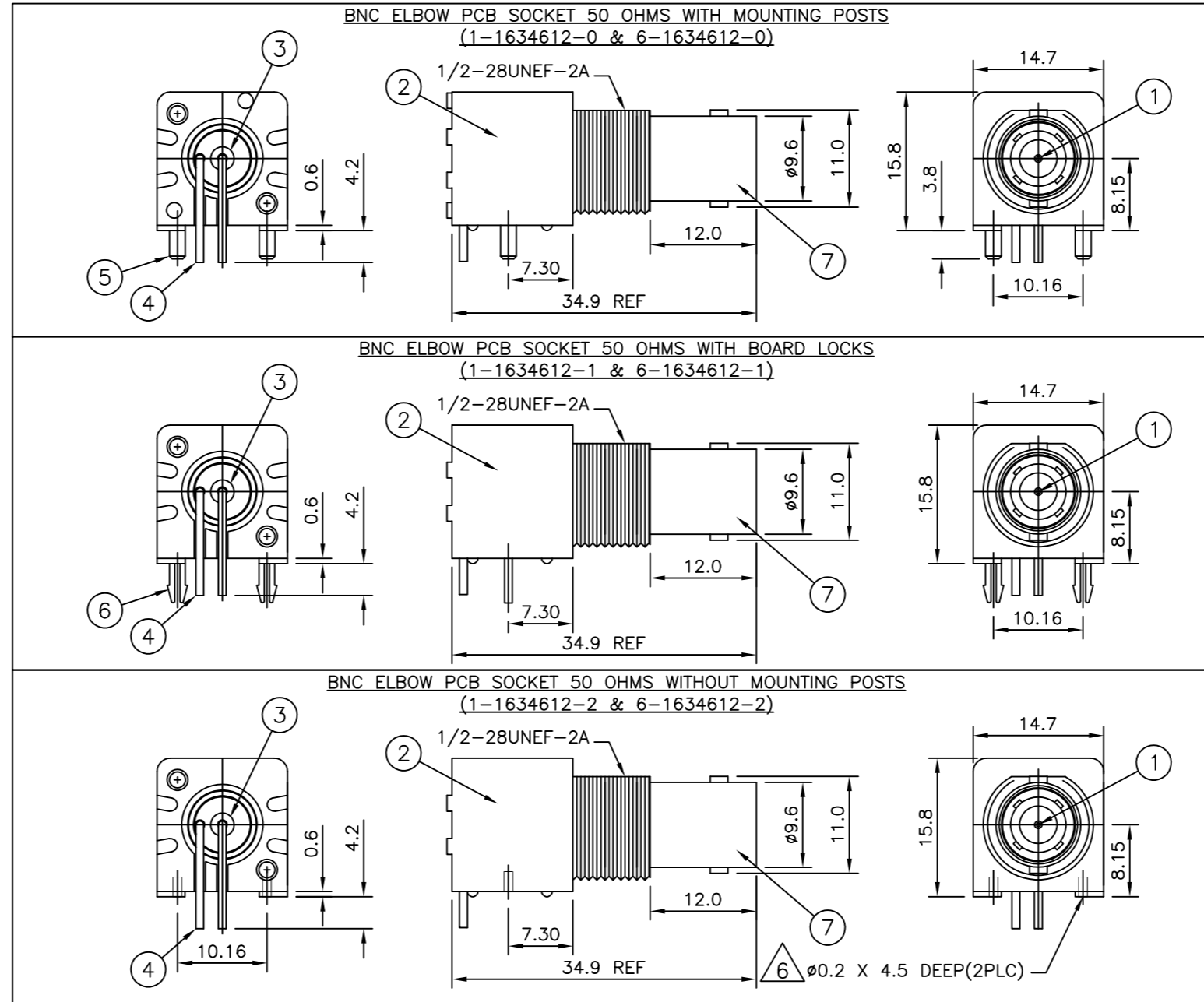


THIS DRAWING IS UNPUBLISHED. RELEASED FOR PUBLICATION AUGUST, 2005.  
 © COPYRIGHT 2005 By - ALL RIGHTS RESERVED.

LOC	DIST	REVISIONS					
		P	LTR	DESCRIPTION	DATE	DWN	APVD
E	B		C1	REVISED PER ECO-11-005033	31MAR11	RK	HMR
			D	ECO-12-014680	20Aug2012	TITAN	MARTIN
			E	ECO-12-018113	27DEC2012	TITAN	MARTIN

NOTES:

- 1. SINGLE PACK IN ACCORDANCE WITH AMP SPEC 107-3275
- 2. 50 TRAY PACK IN ACCORDANCE WITH AMP SPEC 107-3275
- 3. Au PLATING OVER Ni PLATING OVER Cu PLATING
- 4. Ni PLATING OVER Cu PLATING
- 5. TIN PLATING
- 6. RECOMMENDED SELF-TAPPING SCREW 221108-4
- 7. RECOMMENDED MOUNT NUT 1-1634816-0
- 8. RECOMMENDED LOCKWASHER 1-1634817-0
- 9. FOR TECHNICAL DATA REFER TO YOUR LOCAL TE CONNECTIVITY SALES OFFICE
- 10. ALL DIMENSIONS ARE NOMINAL FOR REFERENCE ONLY UNLESS OTHERWISE STATED



Obsolete	Obsolete	Obsolete	Obsolete	Obsolete								
1	1	1	1	1	1	ZINC DIECAST	△	BODY	7			
-	-	2	2	-	-	BRASS	△	BOARD LOCK	6			
-	-	-	-	2	2	BRASS	△	MOUNTING POST	5			
1	1	1	1	1	1	BRASS	△	SOLDER TAIL	4			
1	1	1	1	1	1	PE-606		INSULATOR	3			
1	1	1	1	1	1	PBT BLACK		HOUSING	2			
1	1	1	1	1	1	BRASS	△	CONTACT	1			
6--2	1--2	6--1	1--1	6--0	1--0	MATERIAL		DESCRIPTION	ITEM			
△	△	△	△	△	△	QUANTITY PER ASSY		PARTS LIST				

THIS DRAWING IS A CONTROLLED DOCUMENT.		DWN	14 Feb 09			TE Connectivity			
DIMENSIONS: mm		CHK	14 Feb 09			NAME		BNC HIGH PROFILE R/A INSULATED PCB SOCKET 50 OHM BLACK	
TOLERANCES UNLESS OTHERWISE SPECIFIED:		ANSON MA				PRODUCT SPEC		108-112000	
0 PLC ± 0.5		APVD	14 Feb 09			APPLICATION SPEC		-	
1 PLC ± 0.3		BOB ZHAO		SIZE	CAGE CODE	DRAWING NO	RESTRICTED TO		
2 PLC ± 0.2		-		WEIGHT	A2	00779	C=1634612		
3 PLC ± -		-		CUSTOMER DRAWING		SCALE	NTS		
4 PLC ± -		-		-		SHEET	1 of 1		
ANGLES ± -		-		-		REV	E		
FINISH		SEE TABLE		-		-			

# Mouser Electronics

Authorized Distributor

Click to View Pricing, Inventory, Delivery & Lifecycle Information:

[TE Connectivity:](#)

[1-1634612-0](#)