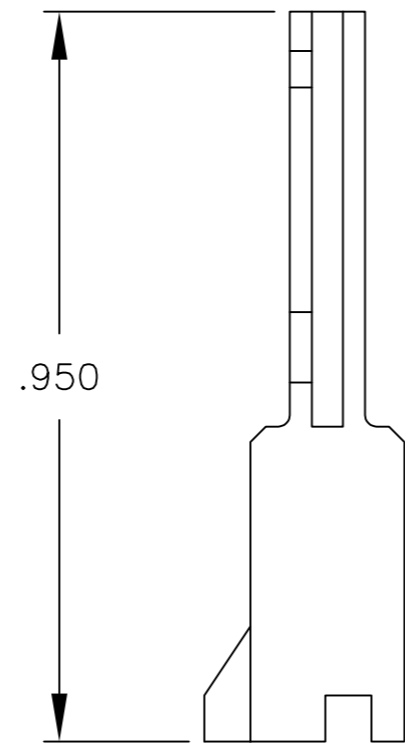
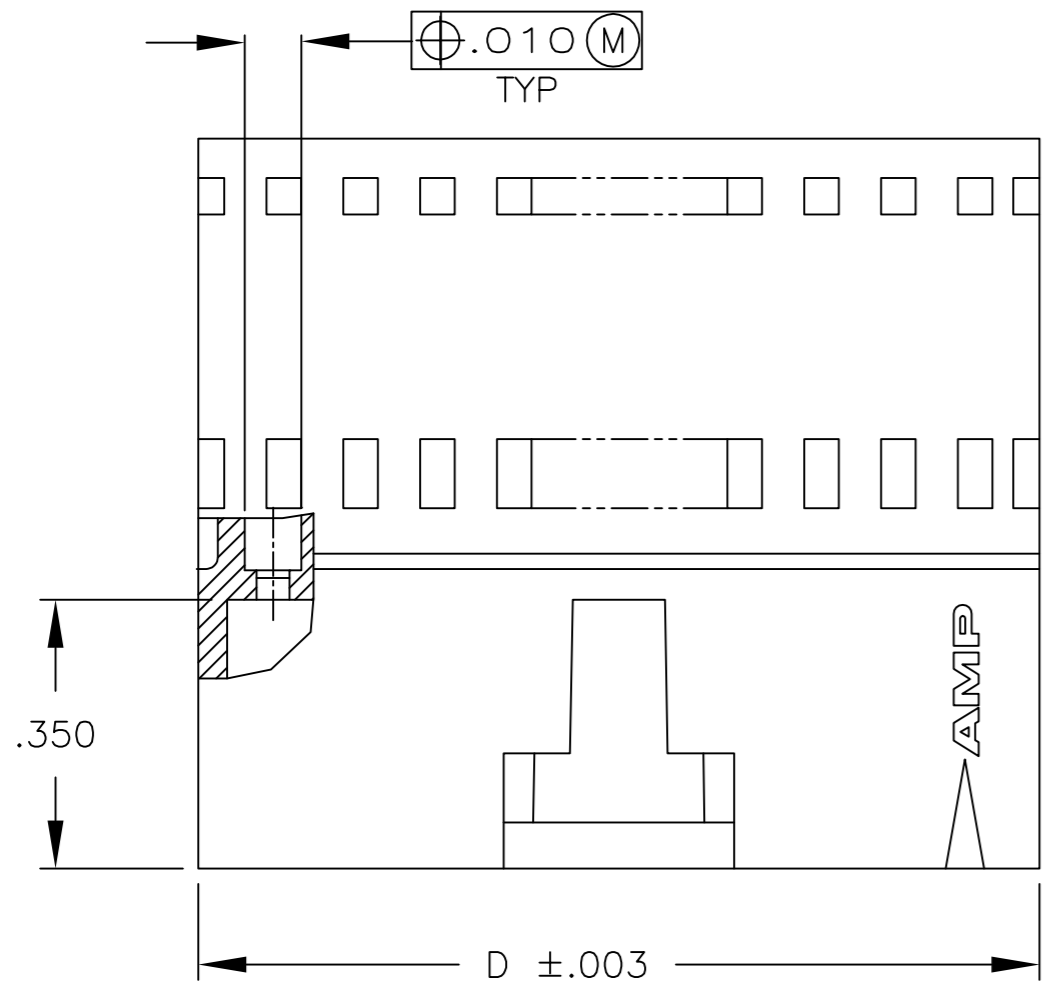
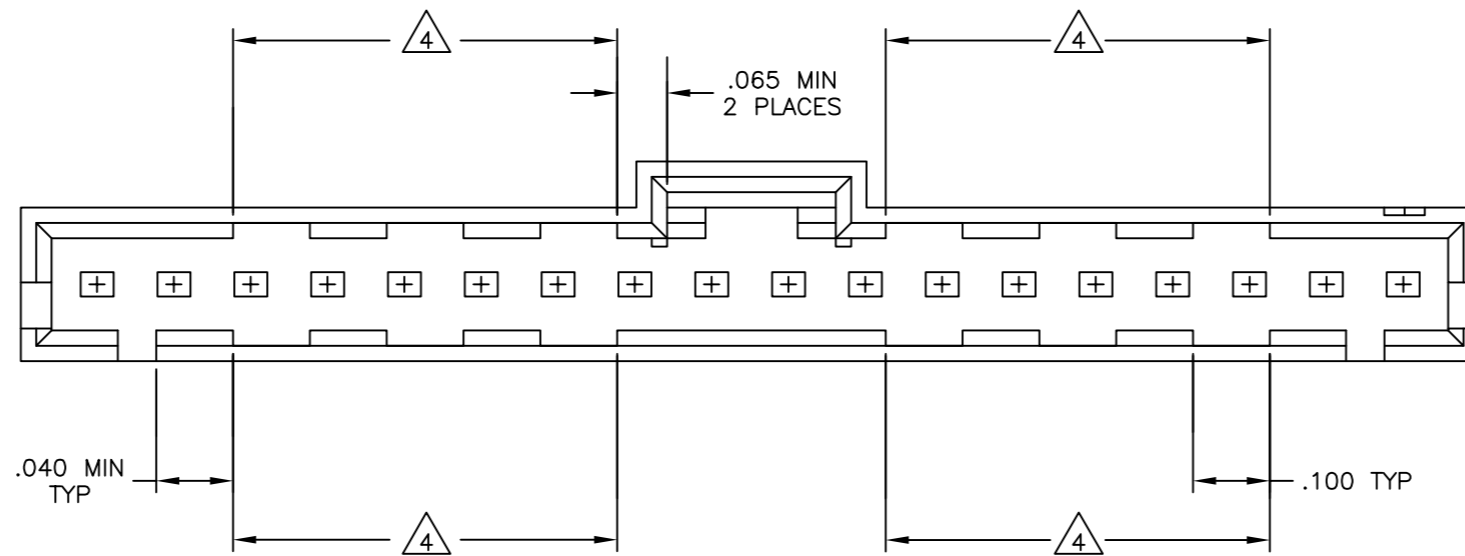
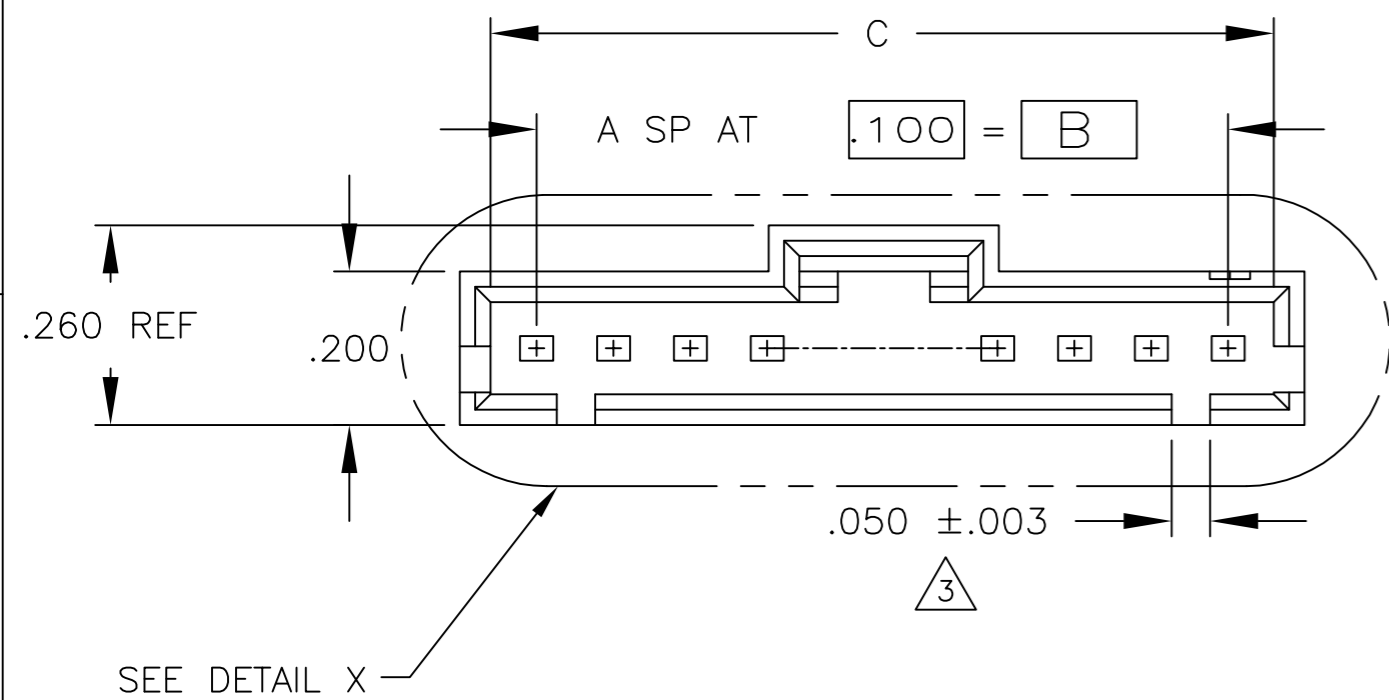


THIS DRAWING IS UNPUBLISHED. RELEASED FOR PUBLICATION  
 © COPYRIGHT - By - ALL RIGHTS RESERVED.

REVISIONS					
P	LTR	DESCRIPTION	DATE	DWN	APVD
P2		REVISED PER ECO-11-010839	25MAY11	RK	HMR
R		REVISED PER ECO-17-007805	31MAY2017	RS	MM

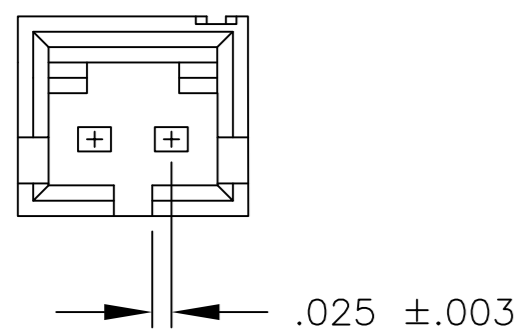


- 1 PBT.
- 2 LCP.
- 3 TOLERANCE IS  $+.007/-0.003$  FOR 6 POSITION AND SMALLER SIZES.
- 4 VOID CORING IN THIS AREA OPTIONAL FOR MOLDING IMPROVEMENT.

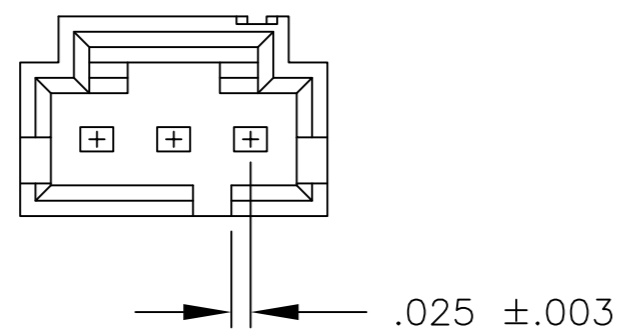


DETAIL X  
 SCALE 6:1  
 (18 POSN SHOWN FOR CLARITY)

	D	C	B	A	NO OF POSN	PART NUMBER
2	2.595	2.520	2.400	24	25	2-103653-4
2	2.495	2.420	2.300	23	24	2-103653-3
2	2.395	2.320	2.200	22	23	2-103653-2
2	2.295	2.220	2.100	21	22	2-103653-1
2	2.195	2.120	2.000	20	21	2-103653-0
2	2.095	2.020	1.900	19	20	1-103653-9
2	1.995	1.920	1.800	18	19	1-103653-8
2	1.895	1.820	1.700	17	18	1-103653-7
2	1.795	1.720	1.600	16	17	1-103653-6
2	1.695	1.620	1.500	15	16	1-103653-5
2	1.595	1.520	1.400	14	15	1-103653-4
2	1.495	1.420	1.300	13	14	1-103653-3
2	1.395	1.320	1.200	12	13	1-103653-2
2	1.295	1.220	1.100	11	12	1-103653-1
2	1.195	1.120	1.000	10	11	1-103653-0
2	1.095	1.020	.900	9	10	103653-9
2	.995	.920	.800	8	9	103653-8
2	.895	.820	.700	7	8	103653-7
2	.795	.720	.600	6	7	103653-6
1	.695	.620	.500	5	6	103653-5
1	.595	.520	.400	4	5	103653-4
1	.495	.420	.300	3	4	103653-3
1	.395	.320	.200	2	3	103653-2
1	.295	.220	.100	1	2	103653-1
MATERIAL COLOR-BLACK	D	C	B	A	NO OF POSN	PART NUMBER



DETAIL FOR -1 ONLY  
 (2 POSITION)



DETAIL FOR -2 ONLY  
 (3 POSITION)

THIS DRAWING IS A CONTROLLED DOCUMENT.

DWN R BROWN 28JUL00	 TE Connectivity PIN HOUSING, AMPMODU MTE, SINGLE ROW, .100 CL POLARIZED WITH LATCH
CHK K WRIGHT 28JUL00	
APVD K WRIGHT 28JUL00	
PRODUCT SPEC 108-25034	
MATERIAL SEE TABLE	SIZE A2 CAGE CODE 00779 DRAWING NO C=103653 RESTRICTED TO -
TOLERANCES UNLESS OTHERWISE SPECIFIED: 0 PLC ± - 1 PLC ± - 2 PLC ± - 3 PLC ± .005 4 PLC ± - ANGLES ± - FINISH -	APPLICATION SPEC 114-25026 WEIGHT - CUSTOMER DRAWING
SCALE 4:1 SHEET 1 of 1 REV R	

# Mouser Electronics

Authorized Distributor

Click to View Pricing, Inventory, Delivery & Lifecycle Information:

[TE Connectivity:](#)

[1-103653-1](#)