

**KitchenAid®**  
HOME APPLIANCES

**KitchenAid® Food Processor**  
**Intended for Professional Service Technician Only**  
**Service/Repair Manual**

KFP1333, KFP1322, KFP1344, KFP1330, KFP1335,  
KFP1356, (13 Cup)



**(Includes International model)**

5KFP1333 (3.1L)



# KitchenAid®

## Food Processor Service/Repair Manual

### Intended for Professional Service Technician Only

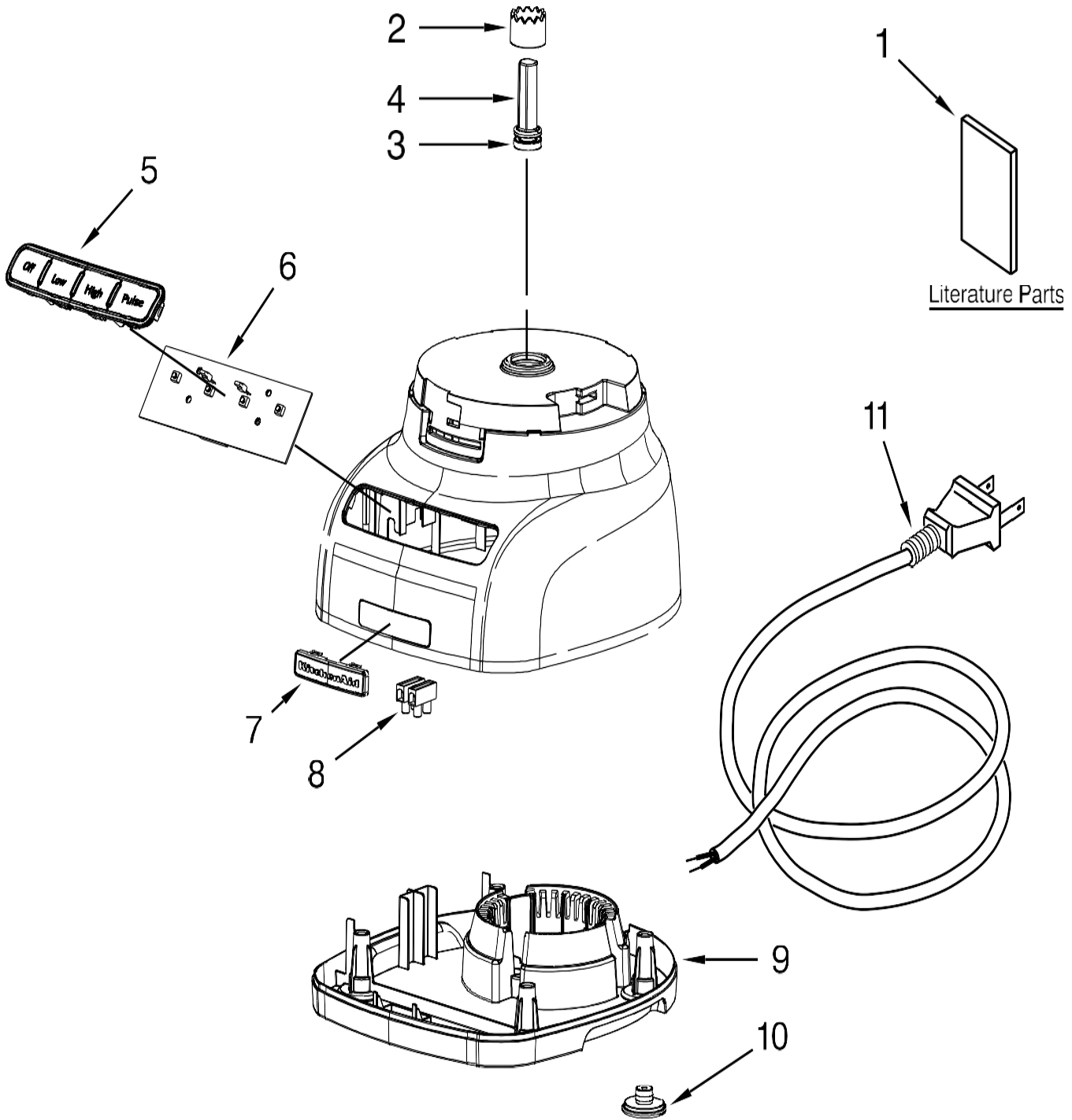
© 2016 KitchenAid®

- Covers Domestic Model – 13-cup: KFP1322ER, KFP1333WH, KFP1333OB, KFP1333ER, KFP1333CU, KFP1333BD, KFP1333GC, KFP1333QG, KFP1333ACS, KFP1344CA, KFP1344ES, KFP1344MS, KFP1344ACS, KFP1344ACS, KFP1344AES, KFP1344ACA, KFP1344AFPO, KFP130CU, KFP1330SPO, KFP1355WH, KFP1355OB, KFP1355ER, KFP1355BU, KFP1355CU, KFP1355GC, KFP1356BU, KFP1356CU, KFP1356ER, KFP1356GA, KFP1356WH, KFP1356TG, KFP1356OB
- International Model – 3.1L 5KFP1333GER

## Table of Contents

<b>Subject</b>	<b>Page(s)</b>
Important Service Workplace Safety Recommendations .....	1
Service Environment .....	2
Personal Protection .....	2
Electrical Considerations .....	2
Electrical Requirements .....	3
Important Safeguards .....	3
List of Tools Required .....	4
Testing the Food Processor .....	4
Service Procedures: .....	6
Component Access (Housing Base Removal) .....	6
Remove Power Cord .....	8
Remove Slicing Disc Adjusting Knob .....	9
Remove Motor .....	10
Remove Control Board .....	11
Re-Assembly of the Unit .....	11
Motor Replacement .....	12
Control Board Replacement .....	12
Cord Replacement .....	13
Clean and Test Unit .....	14

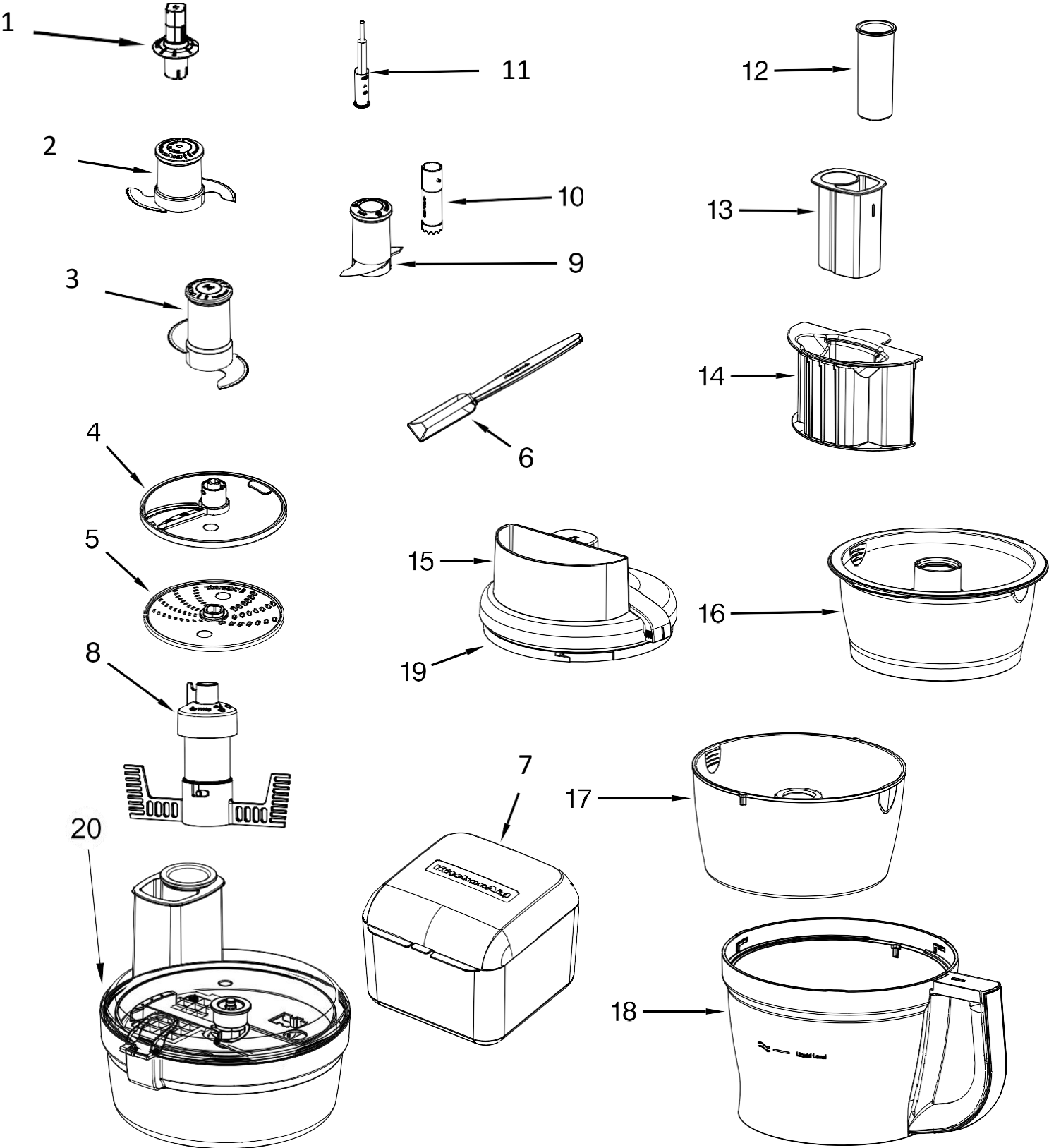
<b>Appendix</b>	<b>Subject</b>	<b>Page(s)</b>
A	Tools Required for Food Processor Service .....	15
B	Problem Guide .....	16
C	13-cup Food Processor Screw Torques .....	17



# Motor And Housing Unit Parts

<u>Illus. No.</u>	<u>Part No.</u>	<u>Description</u>
1	W10407578	Use and Care Guide
2	W10451327	Bearing Support
3	W10451328	Ball Bearing
4	W10451326	Motor Adaptor
5	W10451325	Control Panel
6	W10451324	PCB Assembly
7	W10451323	Nameplate
8	W10451322	Terminal Block
9	W10451321	120V Housing Base
10	W10451320	Foot
11	W10451329	Power Cord (2 Prong)
	W10451331	Power Cord (3 Prong)

# Attachment Parts



# Attachment Parts List

<u>Illus. No.</u>	<u>Part Number</u>	<u>Description</u>
1	W10451497	Shredding Adaptor
2	W10451487	Mini Blade
3	W10451463	Multi Purpose Blade
4	W10451466	Slicing Disc
5	W10451465	Shredding Disc
6	W10461927	Spatula
7	W10451494	Large Accessory Box
	W10625740	Small Accessory Box
8	W10451493	Egg Whip
9	W10451489	Dough Blade
10	W10451495	Slicing Shaft Adapter
11	W10461962	Common Adaptor
12	W10461924	Round Pusher
13	W10461925	Regular Pusher
14	W10451469	Wide Mouth Pusher
15	W10451468	13 Cup Lid
16	W10451470	Mini Bowl
17	W10461926	Chef Bowl
18	W10451467	13 Cup Bowl Onyx Black
19	W10480168	Lid Gasket
20	W10761311	Dicing Kit used on KFP1355 & KFP1356
Not Pictured	W10799255	Julienne Disc

## Introduction

All KitchenAid Products are well designed. Normally they will give continual use year after year without service attention. Records have been maintained to determine and correct, through improved design, any troubles that might possibly develop. An effort has been made in preparation of this manual to cover them all.

### Your safety and the safety of others are very important.

We have provided many important safety messages in this manual and on your appliance. Always read and obey all safety messages.



This is the safety alert symbol.

This symbol alerts you to potential hazards that can kill or hurt you and others.

All safety messages will follow the safety alert symbol and either the word "DANGER" or "WARNING."

These words mean:

**⚠ DANGER**

You can be killed or seriously injured if you don't immediately follow instructions.

**⚠ WARNING**

You can be killed or seriously injured if you don't follow instructions.

All safety messages will tell you what the potential hazard is, tell you how to reduce the chance of injury, and tell you what can happen if the instructions are not followed.

## IMPORTANT SERVICE WORKPLACE SAFETY RECOMMENDATIONS

**⚠ WARNING**



### Electrical Shock Hazard

**Disconnect power before servicing.**

**Replace all parts and panels before operating.**

**Failure to do so can result in death or electrical shock.**

The purpose of this manual is to familiarize the professional house wares technician with the techniques required to repair the following:

- Domestic 13-cup Food Processor  
Model KFP1333
- International 3.1L Food Processor  
Model 5KFP1333

## **SERVICE ENVIRONMENT**

The following Safety Guidelines should be adhered to when servicing this product.

- The workplace should be dry and sanitary at all times and all units should be inspected for cleanliness before any work is started.
- Visually inspect the unit requiring service in a well illuminated area.
- A mild, non-abrasive dishwashing soap solution and clean towel can be used to wash any unit requiring attention.
- The hands of the service technician should be clean at all times during the service procedure.

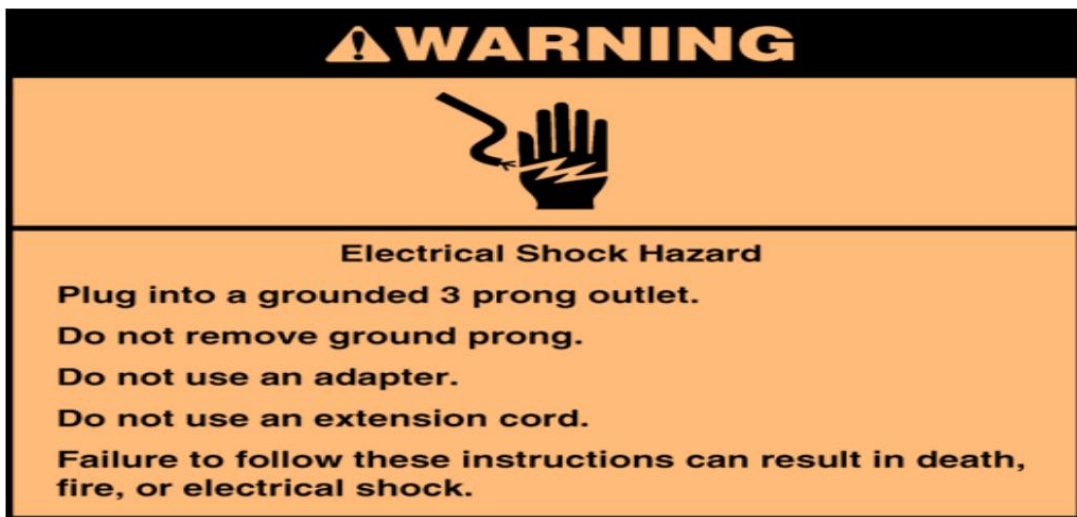
## **PERSONAL PROTECTION**

- The Service Technician should wear Protective Eyewear at all times when conducting a repair on the unit.
- Loose fitting sweaters, shirt sleeves or bracelets should not be worn while servicing any product with rotating parts.

## **ELECTRICAL CONSIDERATIONS**

- The workplace for the food processor should have properly grounded AC outlets that adhere to all Local Electrical Codes that are applicable at the time of repair.
- The food processor Power Cord should always be inspected first before plugging the unit into an energized power outlet.
- Do Not run the food processor if the Power Cord is damaged - replace it.
- ESD (Electro Static Discharge) protection should be provided when servicing the electronic components.
- All disassembly and assembly procedures discussed in this manual should be conducted with the unit disconnected from the AC power source.
- Do Not leave the unit unattended while running it for inspection or for any other checks.
- Do Not remove the work bowl cover from the work bowl or remove the work bowl from the processor base while it is running.
- Always unplug the food processor immediately after concluding all electrical tests.

## Electrical Requirements



This food processor is designed for use with 120 VAC, 60 Hz (240 VAC, 50 Hz International) only. It has a grounded plug and should not be modified in any way. Do not use an extension cord or an adapter with this food processor.

A short power supply cord is provided to reduce the risks resulting from becoming entangled in or tripping over a longer cord. If the power supply cord is too short, have a qualified electrician or service technician install an outlet near the area where the food processor will be used.

## Important Safeguards

Ensure the KitchenAid<sup>®</sup> service technician is aware of the operating safeguards recommended to the customer:

1. Read all instructions in the KitchenAid<sup>®</sup> Food Processor Service Guide to Professional Results booklet.
2. Close supervision is necessary when any food processor is used by or near children.
3. The food processor has been U listed for household and commercial use.
4. To protect against electrical shock, do not immerse cord, plugs, or food processor housing in water or other liquid.
5. Do not operate any food processor with a damaged cord or plug or after the food processor has malfunctioned or has been damaged in any manner.
6. Unplug the food processor from the outlet before cleaning.
7. Do not let the cord hang over the edge of a table or counter or touch hot surfaces.
8. Do not use an extension cord.
9. The use of accessories not recommended by KitchenAid<sup>®</sup> may result in fire, shock, or injury to persons.
10. Do not use the food processor outdoors.
11. Do not place the food processor on or near a hot gas or electric burner or on a heated oven.
12. Do not use the food processor for other than its intended use.
13. Do not use the food processor without the work bowl cover in place while in operation.
14. Do not clean the work bowl/cover with harsh cleaners, steel wool pads or other abrasive material.

## List of Tools Required

The following tools are necessary to service the KitchenAid® Food Processor.

- Dead Blow Hammer
- Phillips Screw Driver
- Large Flat Head Screw Driver
- Small Flat Head Screw Driver
- Soft Work Surface (soft towel or foam matting)
- Volt/Ohm Meter or Digital Multi-meter

**NOTE:** Power drivers are not recommended for servicing the KitchenAid® Food Processor.

The following equipment will greatly assist the technician in servicing the KitchenAid® Food Processor:

- Low pressure compressed air to remove debris from food processor/components.
- Clean rags/shop towels
- Cushion the service area to keep from scratching the food processor or damaging the controls. A clean shop towel or a folded paper towel will usually work well for this purpose.

## Testing the Food Processor

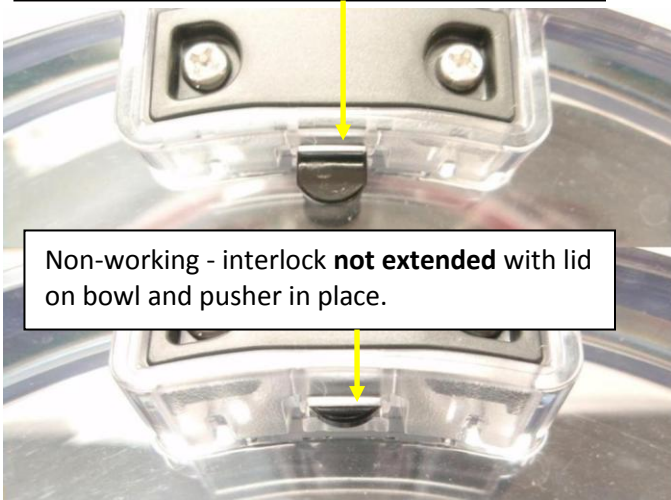
The service technician will have to test the performance of the food processor to identify and diagnose the problem. Normal electrical testing techniques, using a volt/ohm meter, are sufficient to test the food processor electrical components.

**NOTE:** Refer to the PROBLEM GUIDE in this manual while performing any test.

- Review any documentation accompanying the faulty food processor.
- Perform a ground continuity test and a hi-pot test prior to plugging the food processor into an electrical outlet.
- Prior to disassembling the food processor, plug it into an electrical outlet and perform a function test. Test the switches, speed selections, etc. for proper operation and to troubleshoot for the problem.
- If the unit does not run when plugged in, make sure that the work bowl and lid are properly installed and that the pusher is in place. Proper installation of the work bowl, lid and pusher are essential for the safety switch interlock system to function. The work bowl interlock can be verified by assembly of the bowl, lid and pusher while off of the base unit.

Check the bottom of the work bowl handle for interlock action. Proper interlock operation can be determined as shown below.

Working - Interlock **extended** with lid on bowl and pusher fully seated.



Non-working - interlock **not extended** with lid on bowl and pusher in place.

Working and non-working bowl safety interlock

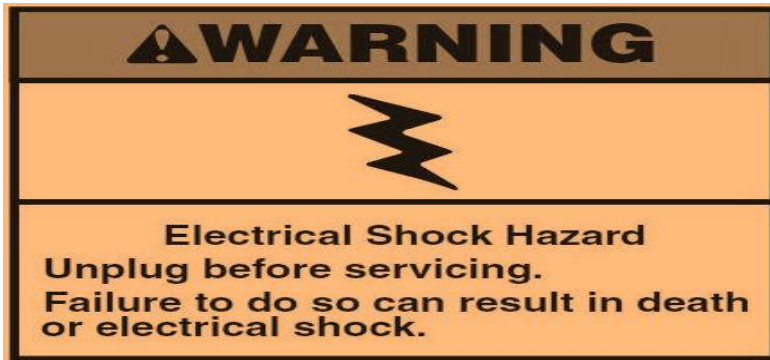
- After it is determined that the work bowl interlock is working properly, the safety switch can be tested by the following procedures:
  - Lock the work bowl to the base of the unit.
  - Put the lid with the pusher on the work bowl and lock it into place.
  - With the unit unplugged, turn the power switch to the “ON” position.
  - Refer to Fig. 2 and measure the resistance across the power plug (L1 & Neutral for 115~120v. domestic units or L1 & L2 for 230~240v international units).
    - If the switch is good, the resistance will be very low (typically less than 10 $\Omega$ ).
    - If the switch is not working (bad), the resistance will be very high (higher than 1.5 M $\Omega$ ).



Safety Switch test measurement.

- After troubleshooting, use the SERVICE PROCEDURES to replace any faulty component.

## Service Procedures



This manual is written as a step-by-step guide to disassemble and reassemble the KitchenAid® Food Processor to gain access to the systems within the unit that are in need of repair. For models covered in this manual, refer to the index page.

Most of the KitchenAid® Food Processor components are contained within the food processor motor housing. Perform the Component Access Procedure (below) to gain access to the food processor components.

**NOTE:** When removing self-tapping screws from any plastic or metal housing, the filings created will be scattered onto adjoining components. Prior to performing any reassembly procedure, make sure to remove all the filings using clean rags, low-pressure compressed air, etc.

Use of the Troubleshooting Quick Reference Guide (Appendix B) will aid in determining what steps are necessary for repairing the unit. Not all steps will be needed for some of the repairs so it is important to consult the Troubleshooting Quick Reference Guide first.

Appendix C lists all of the KitchenAid® Food Processor screw torques required for proper reassembly of the unit.

### Component Access (Housing Base Removal)

Most replacement procedures will require access to the inside of the food processor. To gain access to the food processor components:

1. Unplug the power cord.
2. Remove the work bowl and using a screw driver or a hammer lay across the top of the housing. Use a large flat head Screw Driver to pry the slicing disc sleeve off.(Fig. 1)



**Fig. 1) Remove slicing disc sleeve**

3. Place the work bowl back on the unit with the lid removed, turn the food processor upside-down on a cushioned surface (a soft towel is recommended)

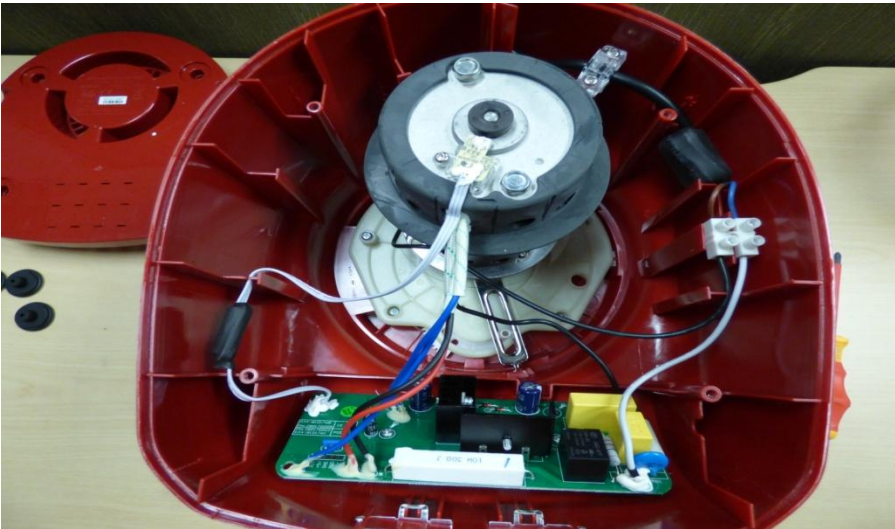
4. Remove the (4) feet indicated in (Fig. 2) from the base of the unit by pulling on them.



**Fig. 2)** Remove these (4) feet to get to the screws.

5. Using a Medium Philips screw driver, remove the four (4) screws securing the housing base to the motor housing.

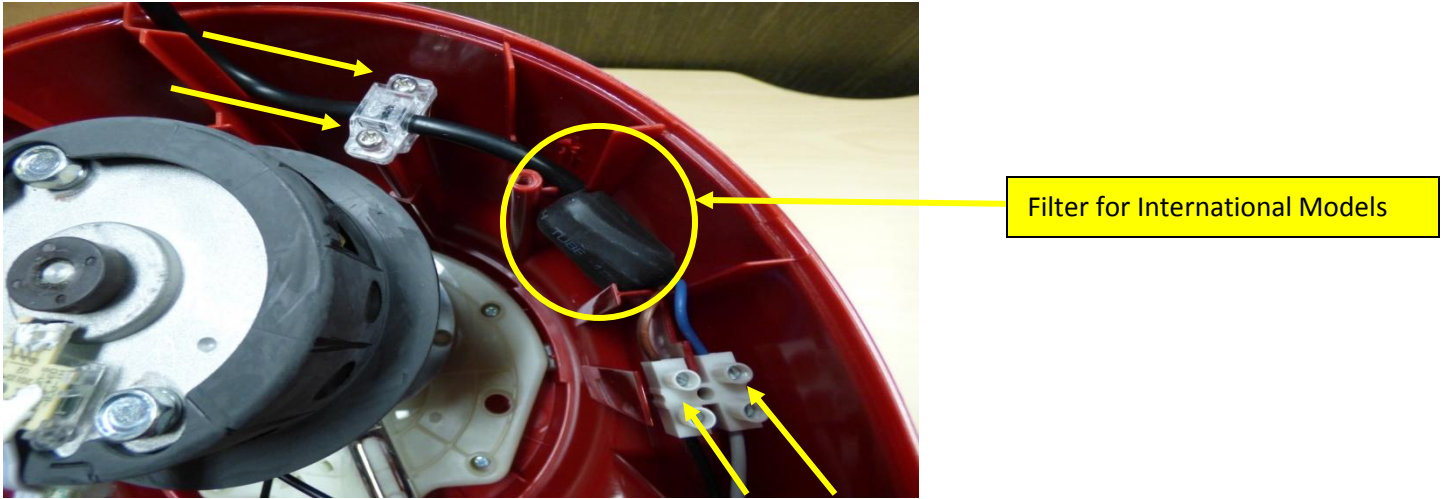
6. Remove the housing base from the motor housing.(Fig. 3)



**Fig. 3)** Remove the housing base and set to the side.

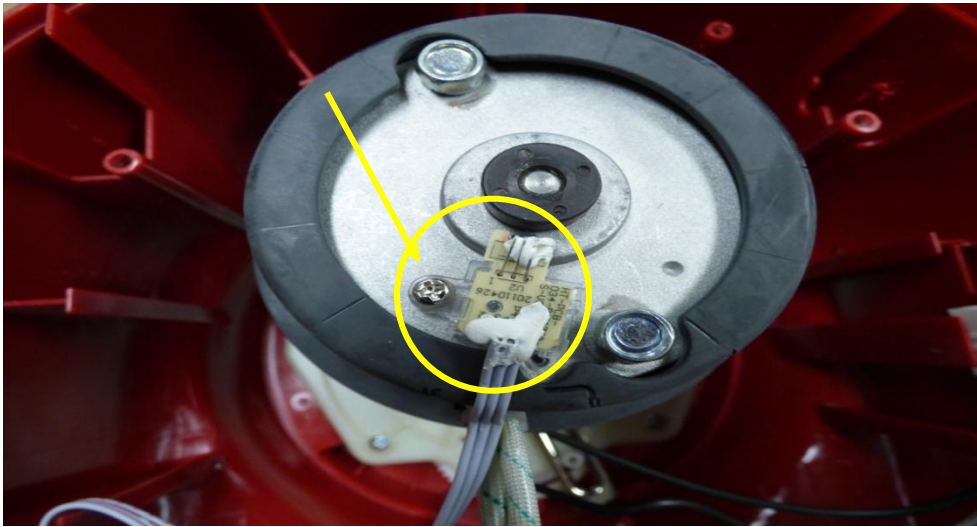
\*\*\*Do not operate the food processor if the power cord is damaged. Replace the damaged cord with a new power cord assembly immediately.

7. Remove the 2 Phillips Screws in the cord cleat.(Fig. 4)
8. Loosen the 2 flat head screws that hold the white and black power wires (blue and brown power wires on International).(Fig. 4)



**Fig. 4) Remove Cord**

9. Remove the 1 Phillips head screw for the speed sensor and remove it from the motor.(Fig. 5)

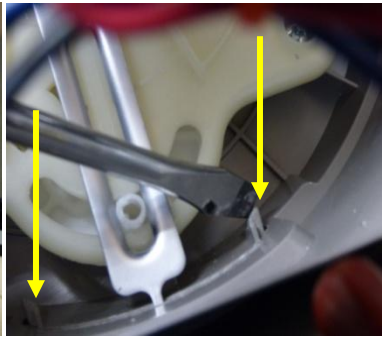


**Fig. 5) Remove the speed sensor**

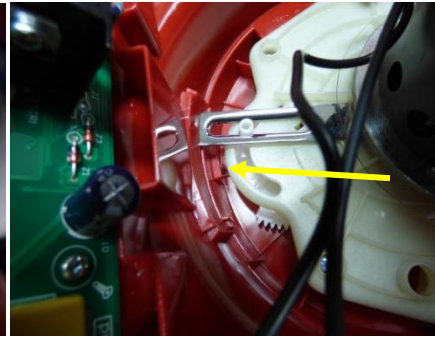
10. Remove the filler panel by the slicing adjustment knob.(Fig. 6) There is a clip on each side(Fig. 7), and a 3<sup>rd</sup> one in the middle on the bottom use a flat screwdriver and release both clips(Fig. 8)



**Fig. 6) Filler Panel**

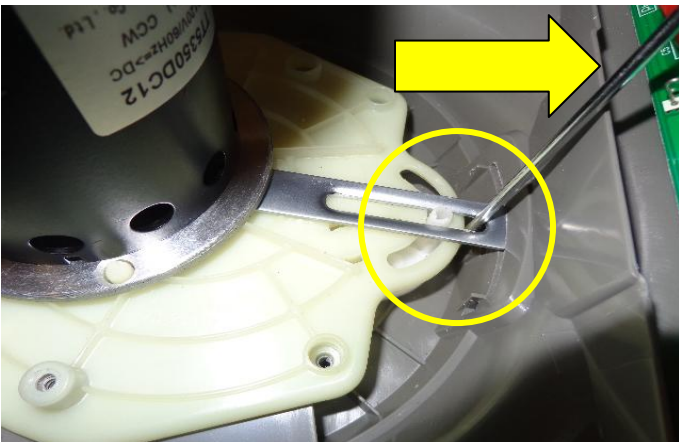


**Fig. 7) 2 Clips**



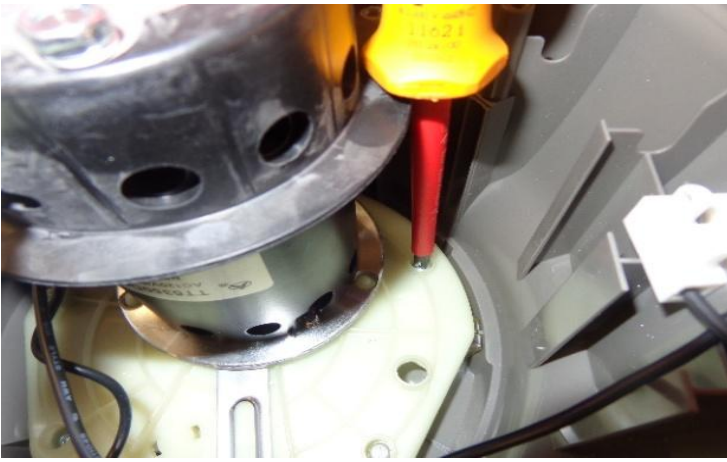
**Fig. 8) 3<sup>rd</sup> Clip**

11. Remove the slicing disc adjustment knob by using a small flat screw driver and pry outward between the plastic and the metal from the adjustment knob.(Fig. 9) \*Be careful not to break the clips You must remove the work bowl before removing the knob and filler.



**Fig. 9) Remove all at the same time.**

12. Remove the 6 screws from the motor to the lower housing.(Fig. 10)



**Fig. 10 Remove motor screws**

13. Remove the 4 small Phillips Screws that holds the PCB in place.(Fig. 11)



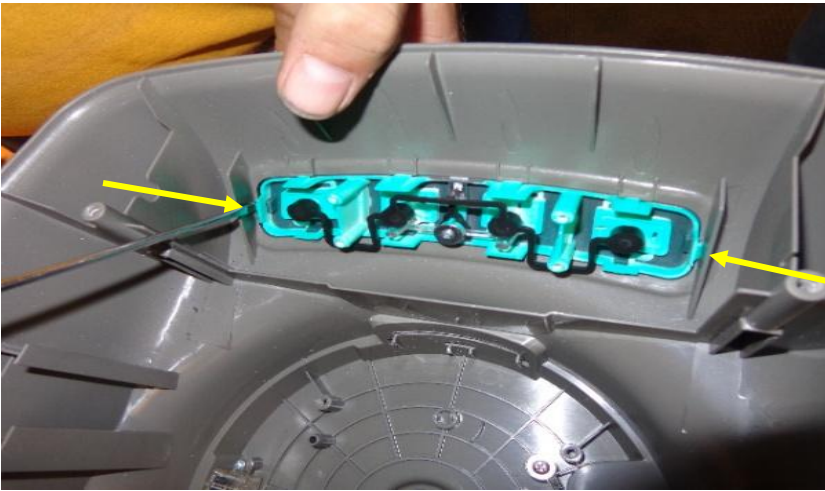
**Fig. 11 Remove control board screws**

14. The motor and control board come out all in one piece.(Fig. 12)



**Fig. 12) Remove motor and control board together**

15. Remove the control panel by pushing in on the clips around the panel. (Fig. 13)



**Fig. 13 Remove Control Panel**

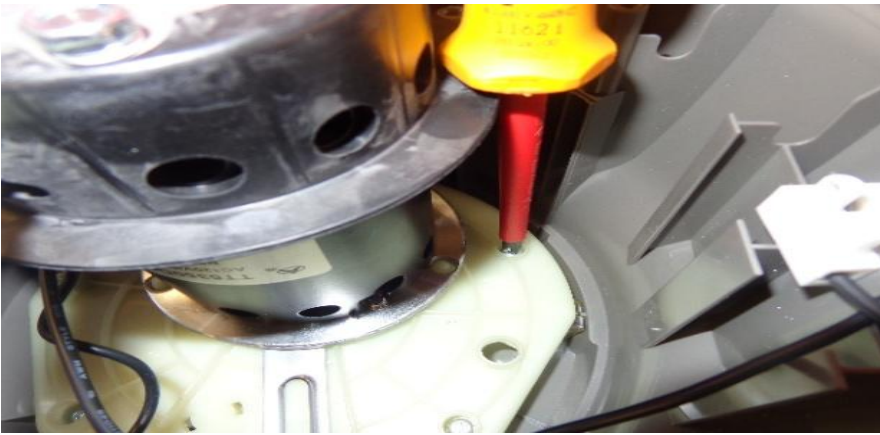
## Reassembly of Food Processor

16. Line up the gears and lower motor and control board in and Watch wires do not get pinched.(Fig. 14)



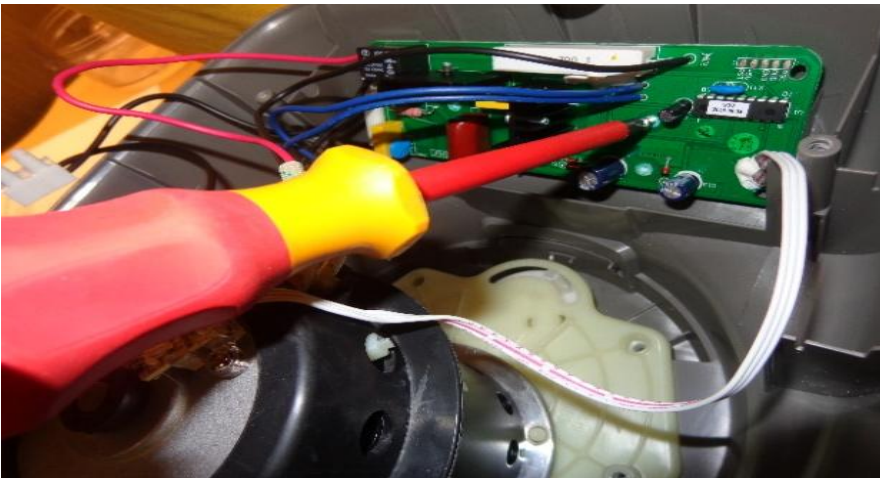
**Fig. 14 Reassemble motor**

17. Replace 6 motor screws.(Fig. 15)



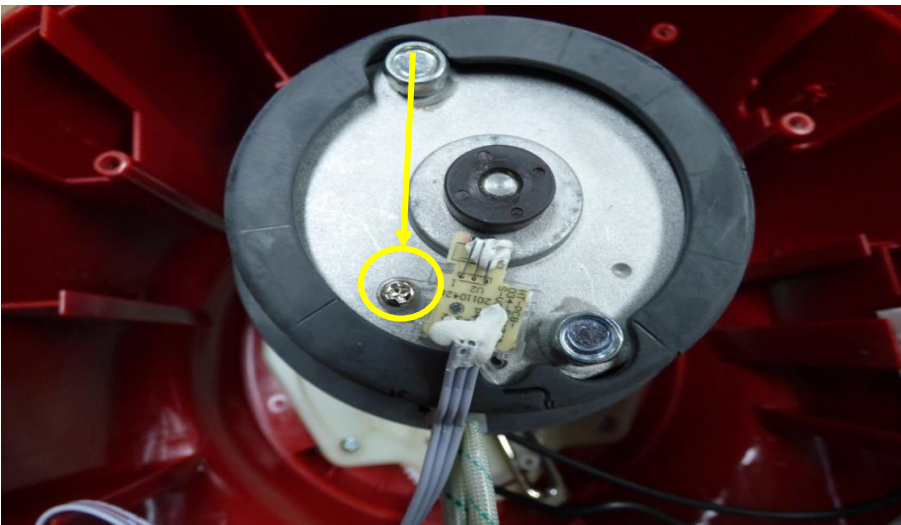
**Fig. 15) Motor Screws**

18. Move the control board into place and replace the 4 screws and tighten.(Fig. 16)



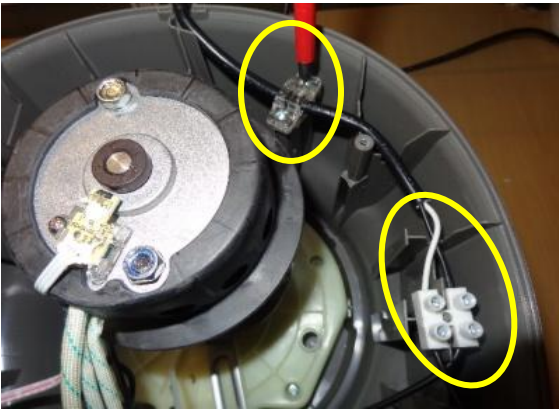
**Fig. 16) Replace Control Board**

19. Place speed control back on top of the motor and tighten screw.(Fig. 17)

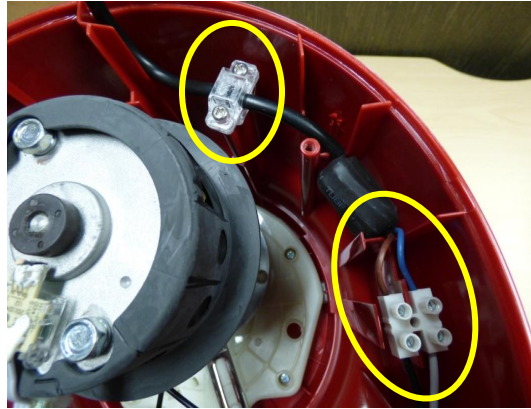


**Fig. 17) Speed Sensor**

20. Route the cord wires and Hook them up black to black and white to white. (International will be brown to black and blue to white) tighten the screws in the connector and the cord holder.(Fig.18)(Fig. 19)

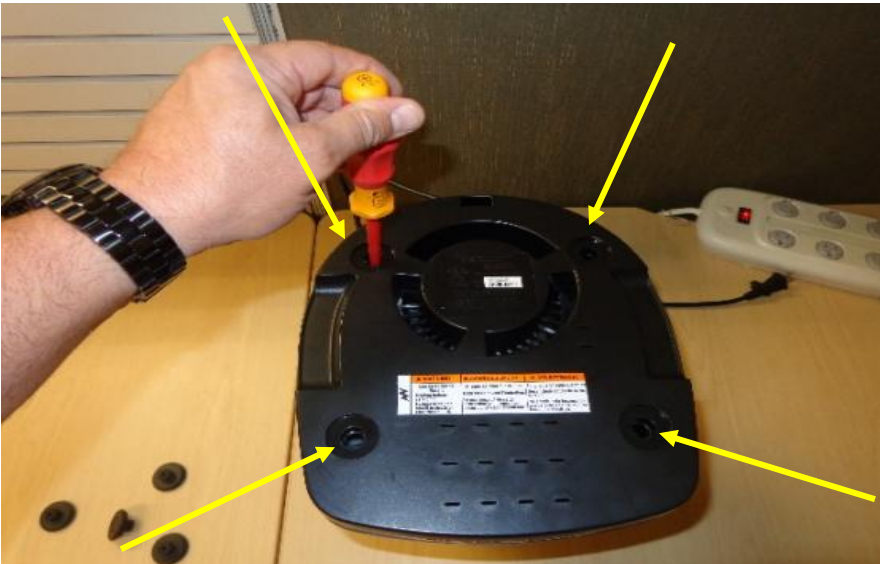


**Fig. 18) Domestic**



**Fig, 19) International**

21. Replace the lower to the housing, replace the 4 Phillips head screws.(Fig. 20)



**Fig. 20) Replace lower**

22. Replace the 4 feet on the lower, by pressing them into place by hand.(Fig. 21)



**Fig. 21) Replace the feet.**

23. Turn the unit right side up and replace the slicing disc sleeve by pressing it onto the motor shaft. Using a towel to help protect your fingers and press it into place. (Fig. 22)



**Fig. 22) Replace Slicing Disc Sleeve**

24. Replace the bowl and Lid  
25. Test Dielectric and Hi-Pot to check for pinched wires.(Fig. 23) After it passes, Plug the unit in and turn the unit on high and loosen the bowl and the unit should shut off. Also check the lid the same way to make sure the safety switches are all working.(Fig. 24)



**Fig. 23) Hi-Pot Test**



**Fig. 24) Test Safety Switches**

## Appendix A

### Tools Required for Food Processor Service



Fig. 25) Hand Tools required for repair of the 16qt. KitchenAid Food Processor.

#### Tool List:

1. Dead Blow Hammer
2. Phillips Screw Driver
3. Large Flat Head Screw Driver
4. Small Flat Head Screw Driver
5. Volt/Ohm Meter
6. Soft work surface (soft towel or foam matting)

## Appendix B Problem Guide

Problem	Cause	Solution
Work bowl cover will not close	slicing disc or drive adapter	Make sure the disc is installed correctly and is positioned properly on the drive adapter.
Food Processor does not run.	Unit not plugged in	Plug into a grounded 3 prong outlet.
	Faulty Power Receptacle (outlet)	Check the power supply receptacle to make sure it's "hot." Check receptacle breaker and/or receptacle wiring.
	Damaged power cord	Replace power cord.
	Faulty ON/OFF/PULSE switch Assembly.	Replace ON/OFF/PULSE switch.
	Work bowl, Lid or large feed tube not installed properly	Make sure the bowl and lid are properly in place and that the large feed tube is in place. If using the large feed tube opening, make sure that the food is not above the Max. fill line.
	Faulty Interlock Safety Switch system	Test the Interlock Safety Switch system. Replace parts as necessary (see "Testing the Food Processor – pg. 5)
Food processor runs intermittently.	Disconnected or broken wires	Check wire connections. Repair if necessary.
	Faulty motor.	Check motor. If faulty, remove and replace.
	Faulty Power Cord or ON/OFF/PULSE Switch Assembly.	Check Power Cord and/or Switch Assembly. If faulty, remove and replace.
Food processor does not run at some selections.	Faulty ON/OFF/PULSE switch Assembly.	Remove and replace the Switch Assembly.
Food Processor does not shred, slice or dice properly.	Slicing/shredding disc or dicing attachment installation	Make sure the raised-blade side of the slicing disc is facing up. If using the adjustable blade, make sure it is set to the correct thickness. Make sure the ingredients are suitable for slicing, shredding or dicing. Check for un-processed food jamming the dicing kit
Food processor does not seat firmly on work surface.	Worn or damaged Foot and/or Feet.	Replace worn or damaged Base Foot/Feet.

# Appendix C

## 13-cup Food Processor Screw Torques

The screw torque values used in the assembly of the food processor are as follows:

kgf.cm                  in.lb.

- Base to Motor Housing screws (x4) .....
- Power Cord Lock screws (x2) .....
- Power Cord Ground screw (x1) .....
- Control Switch mounting screws (x2) .....
- Motor/Gearbox mounting screws (x4) .....
- Gearbox to Motor screws (x3) .....
- Gear Enclosure screws (x4) .....
- Safety Switch Insulation Housing screws (x2) .....
- Switch Lever/Torsion Spring screw (x1) .....
- Trim Band retaining screw (x1) .....