

## DoubleCheck Live Software Platform

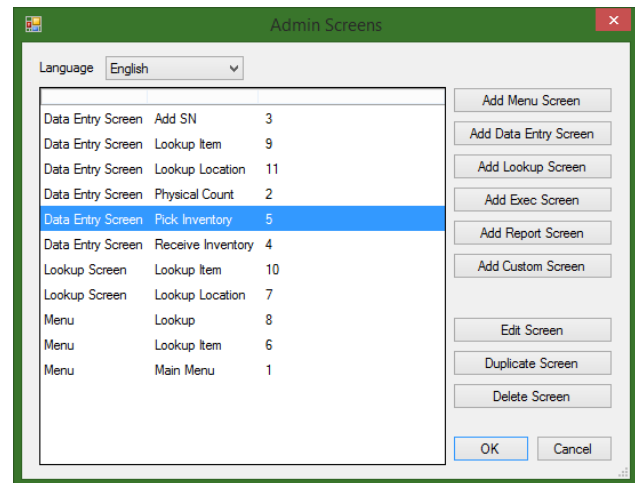
DoubleCheck Live is a software platform developed by DeltaOne Software for real-time mobile wireless data collection. It is a rapid development tool that we use to customize a solution based upon your specific needs.

### Application Development

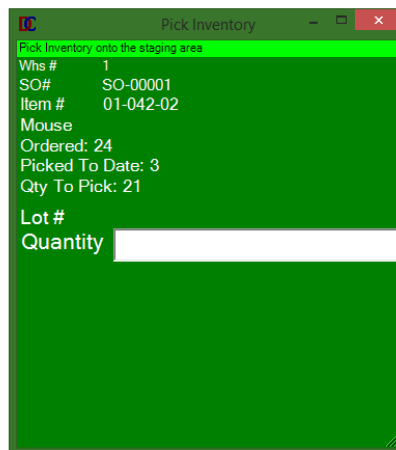
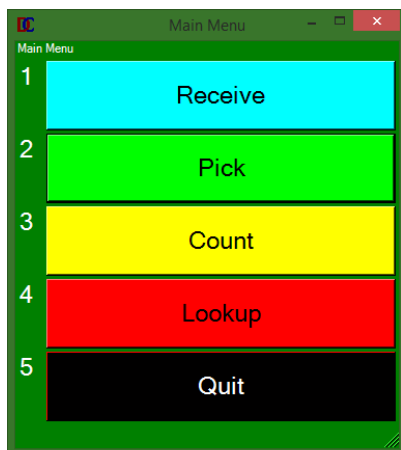
The DoubleCheck Live development platform uses a (free) Microsoft SQL Server database. Your business logic is created in SQL stored procedures.

DeltaOne Software engineers will analyze your processes and tailor the application to your workflow.

You own all your data and can create your own reports and new functions as needed. The Admin Tool (right) makes this process quick and easy, and only basic SQL knowledge is needed.



The DCL platform makes deployments fast, with no downtime required.



### Why DoubleCheck Live?

- Real-Time Communication
- Fast Deployments
- No Downtime
- Customizable
- Easy-to-Use Admin Tool for adding additional functions
- Scalable
- Own your data
- Minimal server requirements
- Connects with most Accounting or ERP packages

## Solutions

DoubleCheck Live can be used to automate a wide range of business processes:

- Production
- Warehouse Management
- Asset Tracking
- Merchandizing
- Measurable data: accuracy, productivity, etc.
- Manufacturing
- Direct Store Delivery
- Catch-Weight Processing
- Compliance Applications

Each transaction is matched to your workflow – with DoubleCheck Live, we build the system to fit your needs rather than requiring you to conform to our software.

## Data Capture



Use DoubleCheck Live with most data capture devices:

- PC's and Tablets
- Forklift-Mounted Terminals
- RFID Scanners and Portals
- Mobile Barcode Scanners
- Wrist and Finger Scanners
- Mobile Devices
- In-Counter and Hands-Free Scanners

## Integration

DoubleCheck Live can be used either as a standalone system or integrated with your own accounting, WMS, or ERP system.

- SAP
- SAP Business One
- Dynamics AX (Axapta)
- Dynamics GP (Great Plains)
- Dynamics NAV (Navision)
- Syspro
- Home-Grown Systems ... and many more!
- Sage MAS 90 and MAS 200
- Sage 300 / Accpac
- QuickBooks
- Access and SQL Databases
- Aspen
- Process Pro

Call us today for more details and a demo!

 **DeltaOne**  
**Software**  
**Solutions** barcode rfid voice inventory mobility

2841-G Saturn St., Brea, CA 92821

714-528-7226(scan) 714-528-7236(fax) [www.D1SW.com](http://www.D1SW.com)