



COATINGS SYSTEMS

INDUSTRIAL GRADE
PROFESSIONAL USE ONLY
FX2: THE ALTERNATIVE TO ACID STAINS
NANO-TECH WATERBASE STAIN

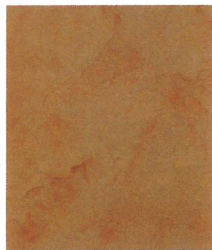
So. Cal. VOC Compliant
VOC < 1 g/l



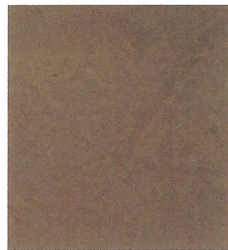
MED GRAY
FX217



AGED LEATHER
FX206



FLAGSTONE
FX203



DARK CHESTNUT
FX207



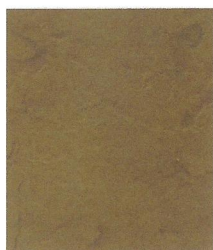
NEW FAWN
FX201



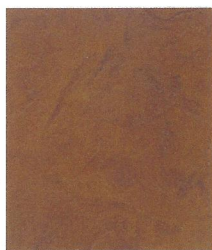
COCOA
FX221



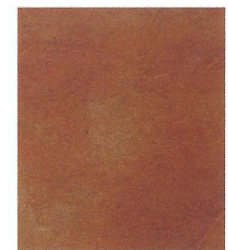
DARK GRAY
FX219



MAPLE
FX215



TERRACOTTA CLAY
FX205



FIRE BRICK
FX211



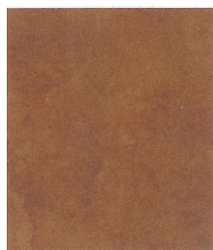
BROWNSTONE
FX220



BRONZE
FX208



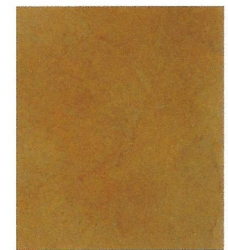
EBONY
FX209



RUSTIC BROWN
FX214



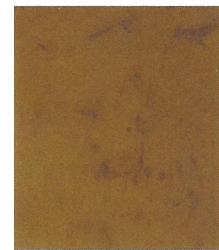
DARK WALNUT
FX202



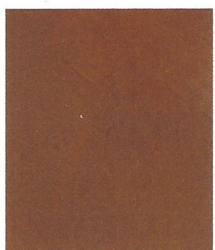
RAW HONEY
FX212



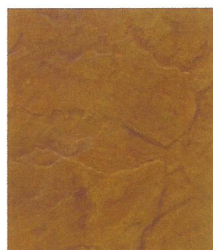
WORN SADDLE
FX216



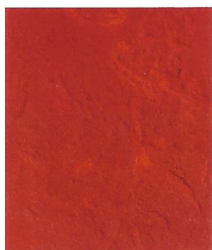
MISSION TAN
FX210



OLD MISSION
FX218



ANTIQUE AMBER
FX204



MERLOT
FXS225



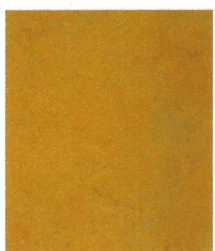
CHEVY BROWN
FXS222



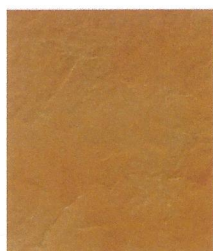
BURNT SIENNA
FXS224



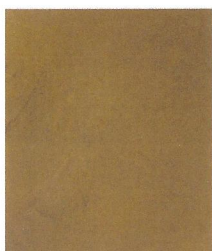
WHITE CLOUD
FXS234



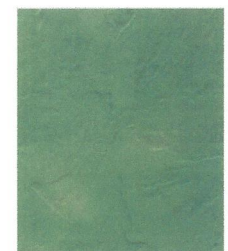
GOLD RUSH
FXS226



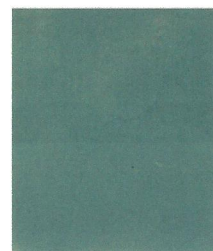
SPANISH GOLD
FXS230



SADDLE BROWN
FXS223



PARADISE GREEN
FXS232



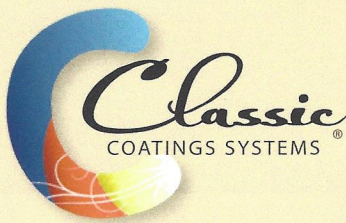
SEA FOAM
FXS233



PACIFIC BLUE
FXS231

SPECIAL ORDER ITEMS • 3 DAY MINIMUM

This color chart is to be use as a reference guide only. Actual color results will vary depending on surface conditions and other variables.

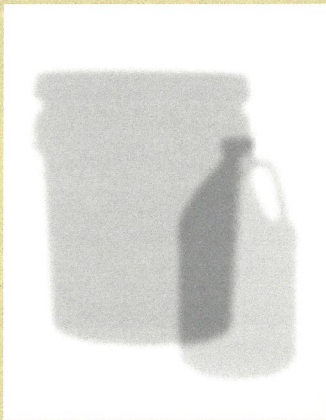


FX2 Concrete Armor WB Stain Industrial Grade

A PENETRATING SOLVENT FREE ACRYLIC BLEND STAIN

DESCRIPTION

Classic Coatings FX2 Armor Nano Industrial Grade is a single component acrylic polymer blend penetrating water base stain. FX2 provides excellent penetration, UV stability and it won't crack, peel or yellow. It can be applied over cementitious toppings, concrete, masonry, pavers, drive ways and polished concrete surfaces up to 400. FX2 is environmentally safe with no need to neutralize and no fumes or cleanup of hazardous chemicals with VOC<1 and is semi-transparent. FX2 colors reach their full potential within minutes of application and can be built up without the worry of damaging the concrete like an acid stain does. Note that a Classic Sealer must be applied and will make the color more vibrant. For both indoor and outdoor use. Available in 1, 5 and 55 gallon drums. We HIGHLY recommend testing on a sample area first since results can vary from different surfaces. **New concrete must cure for 28 days before sealer is applied.**



COVERAGE:

1 gallon (3.8 Liters) covers approximately 200sq. ft. to 400sq.ft.
Note: Can be diluted by 50% soft water for a lighter finish. One light coat will yield greater results.

PACKAGING: Available in 1 gallon jugs, 5 gallon pails and 55 gallon drums.

STORAGE:

- 1. Store in a cool, dry location.**
- 2. Store out of direct sunlight.**
- 3. Protect pails and jugs** from weather and other damage.
4. Store at a temperature between 40°F (4°C) and 90°F (32°C).

SHELF LIFE:

2 years
(Unopened Container)

COLOR:

Varies

Visit us online:
ClassicCoatingSystems.com

See Our Website Gallery
to Get Inspired and
View How-to Videos & SDS

ADVANTAGES

Excellent adhesion and durability Nano technology with voc<1 and low odor
UV Stable and fast drying Low cost, easy installation and low maintenance
Water-base Polymer blend, no fumes or chemical reactions
No hot tire pick up
Reduces surface glare and variegated color
Looks like an acid stain without having to deal with the residue clean up
Must be sealed after 2-3 hours with a Classic water-based, polyurethane, epoxy or solvent sealer

LIMITATIONS

Application surface temperature should be between 55°F and 110°F
Must be installed over a clean and dry surface. Do not apply over any water base stain or sealer
Will reflect working crack in substrate
If efflorescence is pressing, use Classic Multi-Densifier
Do not freeze. Keep container closed when not in use and out of sun
FX2 must stay dry. If it gets wet before sealing it will leave a white ring.

TYPICAL USAGE

Classic FX2 Nano Stain can be used anywhere architectural concrete is desired. Both interior and exterior, on almost any cementitious surface, whether it be gray or color harden concrete, stamped or textured concrete, micro-toppings or overlays. It can be used as an entire surface colorant or just as an accent border or detail. It may be used on new and existing substrates and also on polished concrete up to a 400. Typically used as flooring in restaurants and food service areas, bars, hotels, warehouses, casinos, retail stores, malls, art studios, movie theaters, museums, pool decks, automobile showrooms, residential flooring and more.

Note: In some cases if a reaction cannot be achieved the substrate may need to be resurfaced with a cementitious topping such as Classic Micro Topping and Classic Stampable Overlay. The benefit to resurfacing is to provide a virgin canvas without the effect of patches, repairs, existing stains, mastics, glues, oils, etc. Liquid color does not reflect drying color result.