



SIMS  
METAL  
MANAGEMENT

# TRUCK SAFETY



# TRUCK SAFETY

- **When you are in our facilities the safety of you and our employee's is our primary concern**
- **Safety is a personal commitment for everyone. To keep everyone safe at our facilities the following safety rules must be adhered to**
- **Sims Metal Management reserves the right to ban anyone who doesn't follow our rules**





# ENTRY TO THE FACILITY

- **All drivers are not to use cell phones while operating vehicles or equipment in our facilities**
- **All loads must be uncovered prior to entering the scale**
- **All vehicles must cross the scales when entering or exiting our facilities**



# ENTERING YARD



- **STOP AT GUARD SHACK (if applicable)**
- **Read posted signage**
- **Yield to all pedestrian traffic**
- **Do not remove any chains until you are at the receiving area**
- **Children are not allowed in the facility**
- **No animals are allowed in our facility**



**SIMS  
METAL  
MANAGEMENT**



# SPEED LIMIT

- The posted speed limit for all yards is
- **5 MPH**
- To enter ,traveling inside and exiting the facility
- Yield to all pedestrian and mobile equipment traffic when driving in the yard



**SIMS**  
METAL  
MANAGEMENT

# SPEED LIMIT



- Come to complete stop before you proceed to drive on the scale
- Drive on the scale slowly and when exiting be aware of pedestrians





LIEBHERR

SPI

WATER TOWER



# TRAVELING THROUGH THE YARD

- Turn on 4 way flashers upon entering yard
- Backup alarms are required in the yard and must be operational while backing up
- Outbound traffic has the right of way on all single access scales
- Yield to all pedestrians and any SMM mobile equipment movement



**SIMS**  
METAL  
MANAGEMENT



# PERSONAL PROTECTIVE EQUIPMENT

- **Hard hats are required when exiting vehicle**



**SIMS**  
METAL  
MANAGEMENT

# PERSONAL PROTECTIVE EQUIPMENT

- **Hard hats are required when exiting vehicle**
- **Safety glasses are required when entering our facilities**
- **High visibility /reflective clothing**
- **Steel toed shoes are required to be worn in our facilities at all times**
- **Appropriate gloves if applicable**
- **Long pants and at least short sleeves shirts are required**
- **No tank tops, cutoffs or hooded clothing**



**SIMS  
METAL  
MANAGEMENT**



# Secure your Vehicle

- Remember when exiting your equipment to secure it
- Brakes Set
- Engine shut down. No equipment should be left Idling, IT'S THE LAW.
- Safety devices set out if applicable.



**SIMS**  
METAL  
MANAGEMENT

# ROLL-OFF AND TRAILER DOORS



**SIMS**  
METAL  
MANAGEMENT



# Procedure for opening a side hinged barn style doors

- G.O.A.L. (Get Out And Look)
- Check for people, equipment, and uneven slopes or grades in the area where door will be opened.
- After the area has been checked, stand to the side of the trailer or roll-off and release safety chain.



**SIMS**  
METAL  
MANAGEMENT

- Open the locking mechanism, checking for tension on the door and handle.(ALWAYS standing to the side of the trailer or roll-off) Beware of the handle striking you as it may be under pressure.



- Open the locking mechanism, checking for tension on the door and handle.(ALWAYS standing to the side of the trailer or roll-off) Beware of the handle striking you as it may be under pressure.
- Pull door open by pulling the chain, staying clear of possible falling material. Make sure you have an escape route before opening door
- Secure door to the side of the trailer or container with the safety chain.

- Return to cab of truck from the same side the door is secured. Never walk directly behind an open trailer or container when is loaded.
- Dump load, pull truck forward allowing enough room to close and secure the door without obstruction.
- **Beware of pinch points (hinges, latches, doors and any moving parts)**



- **Never Walk Under Trailer at Any Time**
- Stay within 6 feet of the vehicle at all times. Do not scavenge for material or wander away.
- **Never travel through facility without door being properly closed and secured.**

# LOADING AND UNLOADING

- Drivers must be outside the vehicle and in clear view of the equipment operator while being loaded or unloaded and away from the swing radius of the crane and stockpiles
- When outside of the vehicle, driver must be in view of the operator at all times.
- When dumping, drivers are required to maintain a safe distance between them and other equipment in the yard
- NEVER DUMP SIDE BY SIDE
- Trucks are to be positioned at a safe distance from scrap piles prior to opening or closing doors
- Trucks are to stop at all railroad crossings within the facility and never park on the tracks for any reason





# LOADING AND UNLOADING

- Before dumping, driver must make sure that ground where the axles rest is even.
- Be cautious during windstorms while untarping and dumping.
- Driver must also be aware of material staying stuck inside of dumper. If this happens, ask for crane assistance.











# LOADING AND UNLOADING



- Drivers are to unchain loads in a safe area away from pedestrian walkways. Make sure the load is stable and has not shifted before taking chains off
- Drivers are to stand away from loaders while unloading trailers and never position themselves in any blind spots. Must remain in operators view at all times
- Drivers are not to clean trailers until the trailer is entirely empty and in the proper area



# LOADING AND UNLOADING

- When dumping trailer loads the driver is to be in the cab with the door closed, window up and seatbelt on
- When dumping the driver is to be aware of the tip over hazard at all times. If the trailer is showing a tendency to tip after 8ft the trailer is to be dropped down and ask for assistance to unload
- Drivers are to be aware that during cold weather conditions the load could be frozen
- Drivers are not to close trailer tailgates until the trailer has been fully lowered
- It is prohibited to travel thru the yard with the tailgate open
- Do not travel through the yard until bodies are fully lowered.

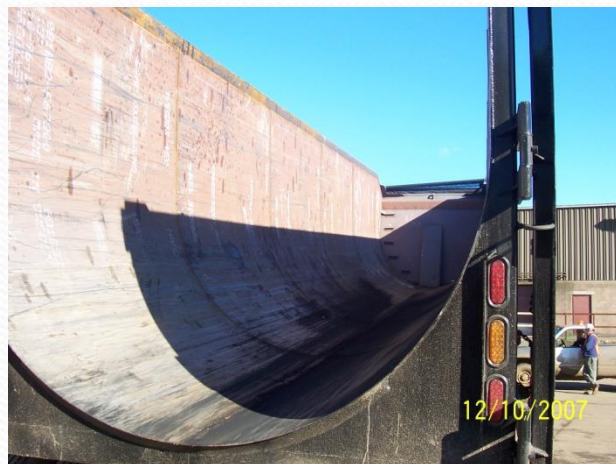


# Dumping In Yard

- Drivers are to be patient and follow directions from yard personal
- **ABSOLUTLY NO cell phones are to be used while operating equipment in our yards**
- Allow adequate space between vehicles while as directed by yard personal
- If load gets stuck, lower trailer immediately all the way down and ask for assistance













# LOADING AND UNLOADING HAZARDOUS AREAS



# Cargo Securement

- All loads must be secured to protect against, bouncing, shifting, or dislodging cargo
- Tarps must be used on all required loads
- Cars must be secured following the appropriate FMCSA regulations
- Roll off containers must be firmly secured to chassis holding both rails tight to truck



SIMS  
METAL  
MANAGEMENT





# VEHICLE INSPECTION

- Drivers are to follow DOT rules for truck and trailer inspection
- Never operate a vehicle that is not safe
- Report any damage to equipment immediately after it occurs
- Perform a visual safety inspection after being loaded or unloaded
- Be aware of the height of your load and any restrictions on roads to be traveled.





# ROLLOVER PRECAUTIONS



- **Shifting material**
- **Proper Securement of the load**
- **Proper loading of trailers –top heavy**
- **Obey speed limit**
- **Judge turns accordingly**
- **Take sharp turns -30% less than the posted speed limit**



















# *Safe Driving*



- **TAKE CARE OF YOURSELF!**

The most important part of a moving truck is the driver! Get plenty of rest before getting behind the wheel. Eat well and stay fit.

Remember, hours of service violations are serious and can threaten your livelihood or even your life. Stay healthy and well rested, or don't drive!

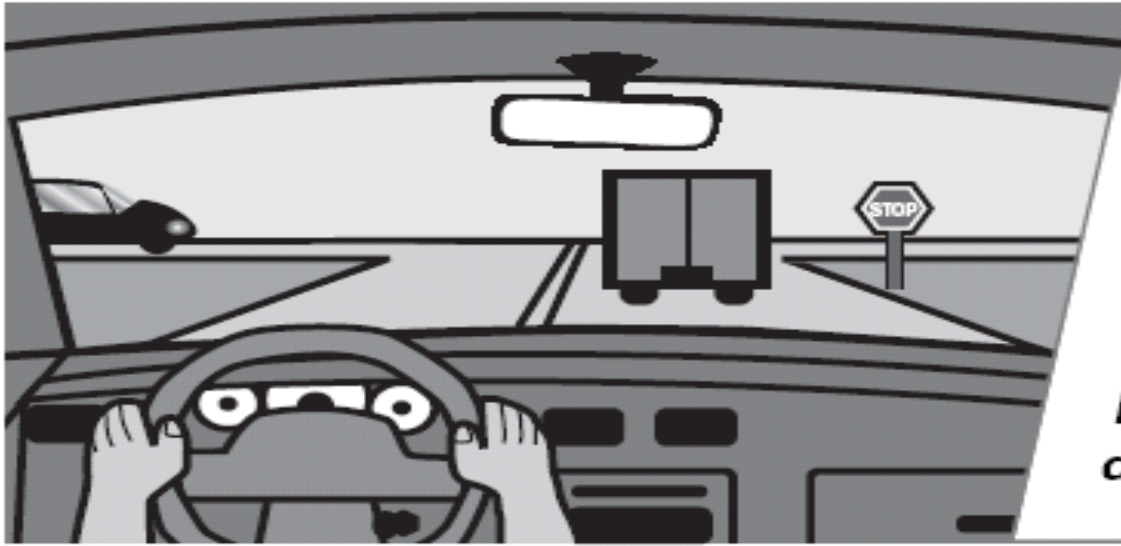






- **FASTEN YOUR SEAT BELT**

Buckle up for safety and control. If you are in a crash, a seat belt can save your life and those around you. It will keep you in your seat and allow you to maintain control of your truck. A major cause of truck driver fatalities involves being ejected from the vehicle. Wearing seat belts, is still the single most effective thing all drivers can do to save lives and reduce injuries on our roadways.



*Scanning ahead for potential road hazards and obstacles is an essential part of driving defensively.*

- **ALWAYS DRIVE DEFENSIVELY**

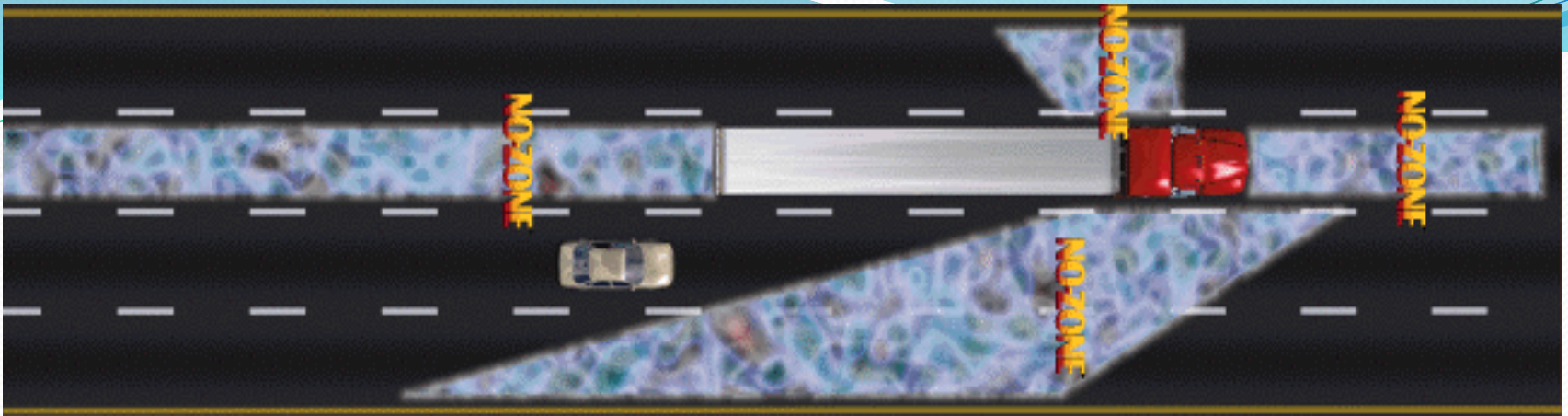
Avoid aggressive drivers! Keep your distance and maintain a safe speed. The only thing speed will increase is your chance for a crash.





- **ALWAYS MAINTAIN YOUR VEHICLE**

Inspect your vehicle before each trip and check your brakes regularly. Learn how to inspect your brakes, identify safety defects, and get them repaired before risking your life and others on the highway.



- **BE AWARE OF YOUR "NO-ZONE"**  
Other drivers may not be aware of the size of your truck's blind spots. Be vigilant in watching out for vehicles in the No-Zone. The No-Zone represents the danger areas, or blind spots, around trucks where crashes are more likely to occur.



**SIMS**  
METAL  
MANAGEMENT





- **ALWAYS KEEP YOUR DISTANCE**

Always leave enough space between you and the vehicle in front of you. If you hit someone from behind, you are typically considered "at fault," regardless of the situation. Large trucks require more stopping distances than other vehicles. Take advantage of your driving height, and anticipate braking situations.



- **SLOW DOWN IN WORK ZONES**

Watch out for highway construction. Stay alert. Work zone crashes are more likely to happen during the day. Take your time going through work zones and give yourself plenty of room. Expect the unexpected!



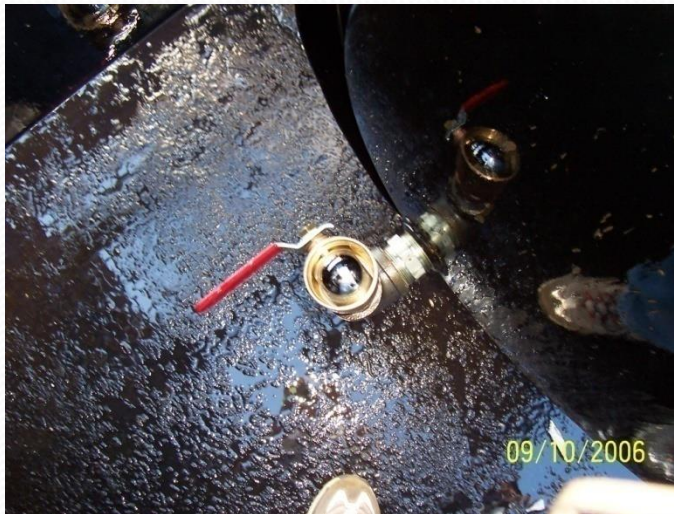
# Spill Controls

- Spill kits should be in all vehicles
- If a spill occurs use the following steps
  - 1) Secure Vehicle
  - 2) Shut off PTO and any valve to stop fluid
  - 3) Contain Spill using proper absorbent material
  - 4) Notify Yard personnel and Supervisor immediately



**SIMS**  
METAL  
MANAGEMENT







# Customer Service

- While at a customer or supplier, you are a representative of Sims Metal Management
- Obey all of the rules and procedures of both SMM and the facility you are at
- Be courteous and professional
- If an issue arises call SMM immediately Do Not approach customers yourself.



# Discipline

- First offense, pending on severity, driver and owner of the company will get a documented warning.



# Discipline

- First offense, pending on severity, driver and owner of the company will get a documented warning.
- Second offense, driver will be suspended from all SMM facilities for 1 week, pending on severity, and owner will be notified.

# Discipline


- First offense, pending on severity, driver and owner of the company will get a documented warning.
- Second offense, driver will be suspended from all SMM facilities for 1 week, pending on severity, and owner will be notified.
- Third offense trucking company will be suspended from all SMM facilities for 1 week or indefinitely depending on severity.



# Discipline

- First offense, pending on severity, driver and owner of the company will get a documented warning.
- Second offense, driver will be suspended from all SMM facilities for 1 week, pending on severity, and owner will be notified.
- Third offense trucking company will be suspended from all SMM facilities for 1 week or indefinitely pending on severity.
- Forth offense trucking company will be suspended from all SMM facilities indefinitely.

# Record of violation



## Truck & Driver Safety Policy

Record of Violation SIMS Metal Management			
NAME OF COMPANY:			
NAME OF DRIVER:		TRAILER NO. (IF APPLICABLE)	
DATE OF VIOLATION:	TIME OF VIOLATION:	LICENSE PLATE:	
PARTICULARS (Check all that apply)		VIOLATION	
		YES	NO
1. Disobeying instruction/s from Yard Supervisor (specify below)			
2. Failed to wear required Personal Protective Equipment (PPE) - Hard Hat, Safety Shoes, Safety glasses			
3. Driving/Speeding more than 5 MPH			
4. Failed to close box gates before exiting weigh scale			
5. Unauthorized cutting in front of other vehicles			
6. Performed unsafe "side by side" dumping with another trailer or truck			
7. Failed to secure at least one (1) cable on each end (front and rear) of car bodies			
8. Failed to exit truck's cab while being unloaded (flat beds & mag-off only)			
9. Failed to provide appropriate blocks on flat bed (Flat Beds Only)			
10. Using cell/mobile phone while in the yard			
11. Cleaning and spilling materials outside the T1 Yard			
12. Scavenging/picking materials from pile/s			
13. No audible backing horn			
14. Driver wearing short pant			
15. Others (Specify)			
Name of Supervisor/Person Filing Report:		Signature:	Date:
Reviewed By:		Signature:	Date:
Remarks/Action Taken:			
Driver notified of violation/s:		Yes	No

Copies to:    Truck Driver – Sent ☐  
                   Truck Owner – Sent ☐  
                   Company Hiring Truck to Deliver Scrap – Sent ☐  
                   Buyer Responsible for Customer – Sent ☐  
                   Plant/Department Division Manager – Sent ☐

Last Revision: February 2006
Page 1 of 1



# conclusion

- **Do it safe**
- **Do it with pride**
- **Or don't do it at all**



**SIMS  
METAL  
MANAGEMENT**