



FACE

Transformation

ROADMAP

The School District of Philadelphia's
FACE Office Reorganization Journey



SPEAKERS

The School District of Philadelphia
Office of Family & Community Engagement



Jenna Monley
Deputy Chief



Yolonda Edwards
Director of Operations

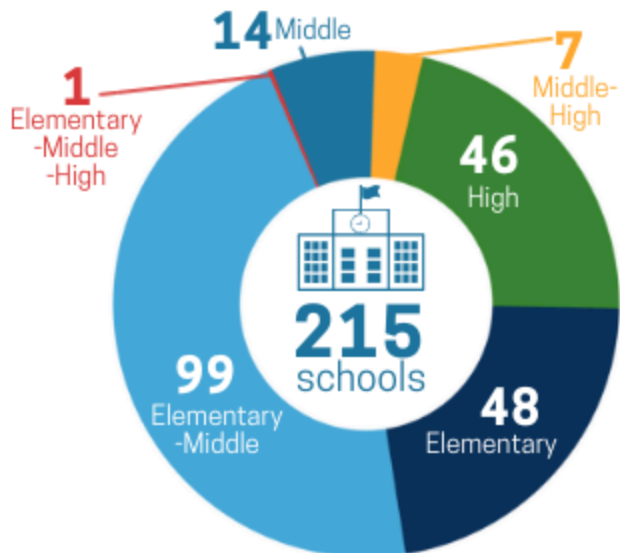


@sdpFACE



Who is

THE SCHOOL DISTRICT OF PHILADELPHIA?



126,994
Total Enrollment



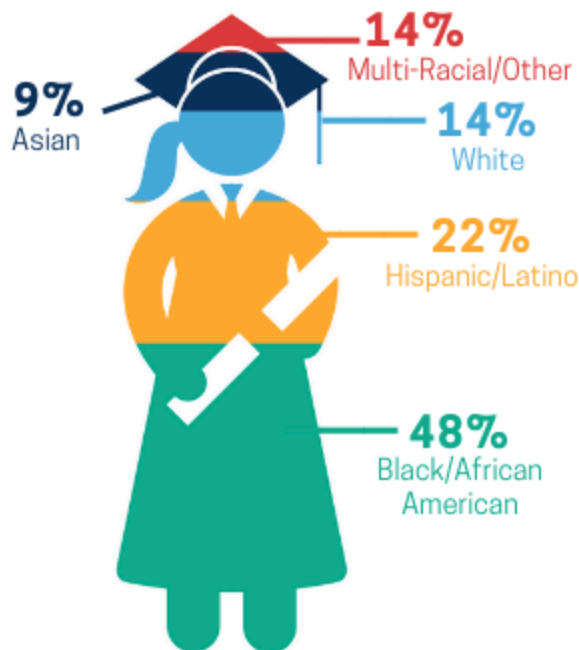
Students & Families come from

Students & Families come from **130+** countries and speak **100+** languages!

Khmer
French
Bengali
Uzbek
Albanian
Nepali

Pashto
Malayalam
Ukrainian
Tajik
Mandingo
Swahili

Portuguese
Mandarin
Arabic
Spanish
Vietnamese
French Creole
Russian



Economically Disadvantaged Students



English Language Learners



Special Education Students



THE SCHOOL DISTRICT OF PHILADELPHIA

THE PROBLEM

Before 2016...



Reactive &
Problem-
Focused



Lack of
School
Services



Limited
Number of
Staff



No
Policy



Partnerships
Nonexistent



@sdpFACE



OFFICE OF FAMILY AND
COMMUNITY ENGAGEMENT
The School District of Philadelphia



School Year
2016-2017

YEAR ZERO

BUILDING
FROM THE
GROUND UP

The 7 shifts



of the Office of
Family &
Community
Engagement

THE 7 SHIFTS

The **PROBLEM**

Lack of written
policies and
procedures.



The **STRATEGY**

Developed
district-wide
policies that
promote
effective
Family-school-
community
partnerships.



[SHIFT #1]



@sdpFACE

FACE

OFFICE OF FAMILY AND
COMMUNITY ENGAGEMENT
The School District of Philadelphia

Developed district-wide policies that promote effective family-school-community partnerships.



THE 7 SHIFTS

The **PROBLEM**

Lack of shared vision among stakeholders about family engagement.



The **STRATEGY**

Agreed-upon shared vision.



[SHIFT #2]



@sdpFACE

FACE
OFFICE OF FAMILY AND
COMMUNITY ENGAGEMENT
The School District of Philadelphia

Developed district-wide policies that promote effective family-school-community partnerships.



THE 7 SHIFTS

Agreed-upon shared vision.



The **PROBLEM**

Limited program staff and structures to support families and schools.



The **STRATEGY**

Hired 30 new Family Engagement Staff.



[**SHIFT #3**]



@sdpFACE

FACE
OFFICE OF FAMILY AND
COMMUNITY ENGAGEMENT
The School District of Philadelphia

Developed district-wide policies that promote effective family- school-community partnerships.



THE 7 SHIFTS

Agreed-upon shared vision.



Hired 30
new
Family
Engagement
Staff.



The **PROBLEM**

Lack of
opportunities
for families to
be involved in
decision
making
processes.



The **STRATEGY**

Creating
opportunities
to engage
families
in a range of
services.



[**SHIFT #4**]



@sdpFACE

FACE
OFFICE OF FAMILY AND
COMMUNITY ENGAGEMENT
The School District of Philadelphia

Developed district-wide policies that promote effective family-school-community partnerships.



THE 7 SHIFTS

Agreed-upon shared vision.



Creating opportunities to engage families in a range of services.



The **PROBLEM**

Lack of training opportunities to build capacity among educators to partner with families.

The **STRATEGY**

Developed series to enhance educators' knowledge and skills in collaborating with families



Hired 30 new Family Engagement Staff.



[SHIFT #5]



FACE
OFFICE OF FAMILY AND
COMMUNITY ENGAGEMENT
The School District of Philadelphia

Developed district-wide policies that promote effective family-school-community partnerships.



THE 7 SHIFTS

Agreed-upon shared vision.



Creating opportunities to engage families in a range of services.



Hired 30 new Family Engagement Staff.



The **PROBLEM**

Limited training opportunities for parents to build capacity to support their child's education.



The **STRATEGY**

Recurring trainings to boost confidence, build leadership, and support learning.



Developed series to enhance educators' knowledge and skills in collaborating with families



[SHIFT #6]



 
@sdpFACE

FACE
OFFICE OF FAMILY AND
COMMUNITY ENGAGEMENT
The School District of Philadelphia

Developed district-wide policies that promote effective family-school-community partnerships.



THE 7 SHIFTS

Agreed-upon shared vision.



Creating opportunities to engage families in a range of services.



Recurring trainings to boost confidence, build leadership, and support learning.



The
PROBLEM

The
STRATEGY

Lack of effective communication.

Provide regular communication, with multiple methods for information sharing



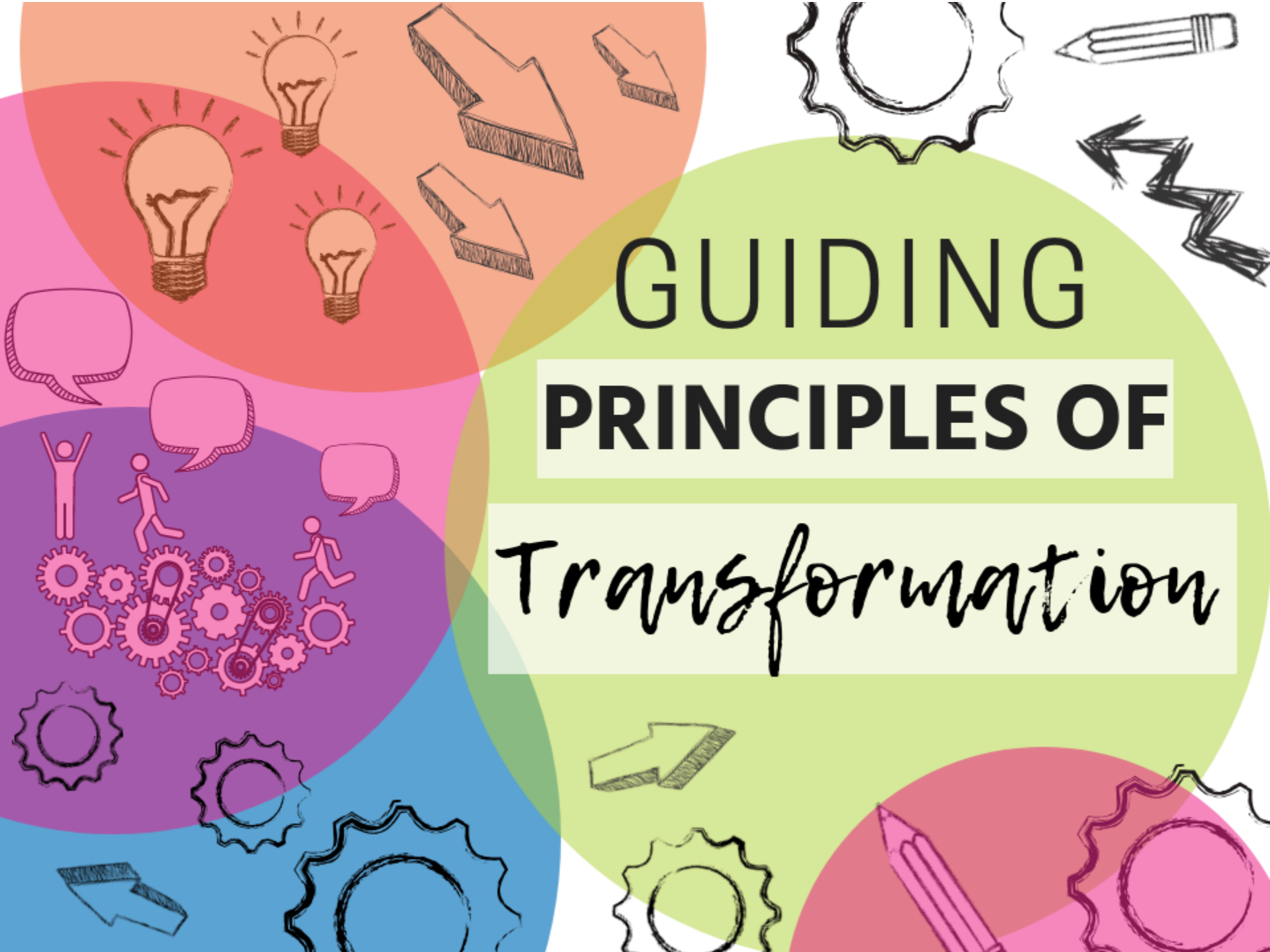
Developed series to enhance educators' knowledge and skills in collaborating with families



[SHIFT #7]



FACE
OFFICE OF FAMILY AND
COMMUNITY ENGAGEMENT
The School District of Philadelphia



GUIDING PRINCIPLES OF

Transformation

ESSA + FAMILY ENGAGEMENT

What does the Every Student Succeeds Act say about family engagement?

CONDUCT
OUTREACH

PRACTICE
MEANINGFUL
INVOLVEMENT

ADDRESS
BARRIERS

PRACTICE
TWO-WAY
COMMUNICATION

BUILD
CAPACITY

COORDINATE
& INTEGRATE
SERVICES

PROMOTE
ACCESSIBILITY

DEVELOP
EVIDENCE-BASED
STRATEGIES



@sdpFACE

FACE

OFFICE OF FAMILY AND
COMMUNITY ENGAGEMENT
The School District of Philadelphia

ESSA + FAMILY ENGAGEMENT

How does your family engagement program currently align with ESSA's parent and family engagement guidelines?

AFFINITY MAPPING ACTIVITY

#1

3 Minutes In Silence - Brainstorm by writing programs/services on post-it notes.

#2

2 Minutes In Silence - Categorize your post-it notes by placing them in the relevant ESSA buckets on your table.

#3

5 minutes - Discuss your categorizations as a table group.



@sdpFACE

FACE

OFFICE OF FAMILY AND
COMMUNITY ENGAGEMENT
The School District of Philadelphia

ESSA/FACE ALIGNMENT



THE POWER OF PARTNERSHIPS

Building Relationships

Engage key stakeholders to understand the current landscape and invite their participation.

Conduct Outreach
Practice meaningful involvement
Practice two-way communication
Coordinate and integrate services



THE POWER OF STRATEGY

VMOSA: Vision, Mission, Objectives, Action Plan

Develop a strategic action plan and framework to guide the work.

Build capacity
Coordinate and integrate services



THE POWER OF COMMUNICATION

Adopt Marketing Mindset

Promote the importance of family engagement in education.

Conduct Outreach
Practice two-way communication
Promote accessibility



THE POWER OF INNOVATION

Imagine, Invent, Implement

Design and implement new promising strategies, programs, and initiatives.

Practice meaningful involvement
Promote accessibility
Develop evidence-based strategies



THE POWER OF CAPACITY-BUILDING SUPPORT

Cultivating a Culture of FACE Learning

Establish a training program for educators and families.

Address barriers
Build capacity



THE POWER OF DATA & ANALYTICS

Measure, Act, Refine

Build systems to collect data and monitor progress.

Address barriers
Coordinate and integrate services
Develop evidence-based strategies



@sdpFACE

FACE

OFFICE OF FAMILY AND
COMMUNITY ENGAGEMENT
The School District of Philadelphia

ESSA/FACE ALIGNMENT

CROSSWALK TOOL



	CONDUCT OUTREACH	PRACTICE MEANINGFUL INVOLVEMENT	ADDRESS BARRIERS	PRACTICE TWO-WAY COMM.	BUILD CAPACITY	COORDINATE & INTEGRATE SERVICES	PROMOTE ACCESSIBILITY	DEVELOP EVIDENCE-BASED STRATEGIES
THE POWER OF PARTNERSHIPS	✓	✓		✓		✓		
THE POWER OF STRATEGY					✓	✓		
THE POWER OF COMMUNICATION	✓			✓			✓	
THE POWER OF INNOVATION		✓					✓	✓
THE POWER OF CAPACITY-BUILDING SUPPORT			✓		✓			
THE POWER OF DATA & ANALYTICS			✓			✓		✓

THE POWER OF PARTNERSHIPS

Partnered with other Central Office departments:

- Grant Compliance and Fiscal Services
- Research & Evaluation Office
- Office of Management and Budget
- Early Childhood Education
- Assistant Superintendents

OFFICE OF FAMILY AND COMMUNITY ENGAGEMENT GETTING TO KNOW YOU SURVEY		
NAME: _____	POSITION: _____	
WORK EXTENSION: _____	CELL: _____	EMAIL: _____
KEY RESPONSIBILITIES		
ACCOMPLISHMENTS		
1. What five words would you use to describe yourself?		
2. What are your areas of strength?		
3. Which areas do you need to refine or continue to develop?		
4. What are your goals?		
5. How could your manager support your work more effectively?		
6. Write your belief(s) about parent engagement and learning I believe...		



COORDINATE & INTEGRATE SERVICES



@sdpFACE



THE POWER OF PARTNERSHIPS



Went through
strategic
re-branding and
re-organization

Solicited stakeholders'
feedback in our
re-branding process



CONDUCT OUTREACH



THE POWER OF PARTNERSHIPS

Parent & Family Engagement Policy

POLICY DEVELOPMENT

Annually, the District conducts an evaluation of the content and effectiveness of the district-wide parent and family engagement policy, activities, and programs.



Family and community members are invited via **robo-call, social media, email newsletters, and flyers** to participate in the input process.



The Office of Family and Community Engagement holds **focus groups** to explain the policy and listen to feedback from stakeholders.



All stakeholders can also share their input, questions, and feedback via an **online survey**.



PRACTICE MEANINGFUL INVOLVEMENT & TWO-WAY COMMUNICATION

THE POWER OF PARTNERSHIPS

Parent & Family Engagement Policy

No. 918

SECTION: 900 COMMUNITY ENGAGEMENT
TITLE: District-wide Parent & Family Engagement Policy
ADOPTED: August 24, 2017
REVISED: August 17, 2018

THE SCHOOL DISTRICT OF PHILADELPHIA

918. DISTRICT-WIDE PARENT & FAMILY ENGAGEMENT POLICY

Purpose

The School District of Philadelphia (the District) recognizes that a child's education is a responsibility shared by parents, families, schools, and the community during the child's time in school. Creating positive, home, school, and community partnerships is essential to carrying out the shared responsibility necessary to improve school performance and the importance of academic achievement.

The Parent and Family Engagement Policy is being adopted in order to:

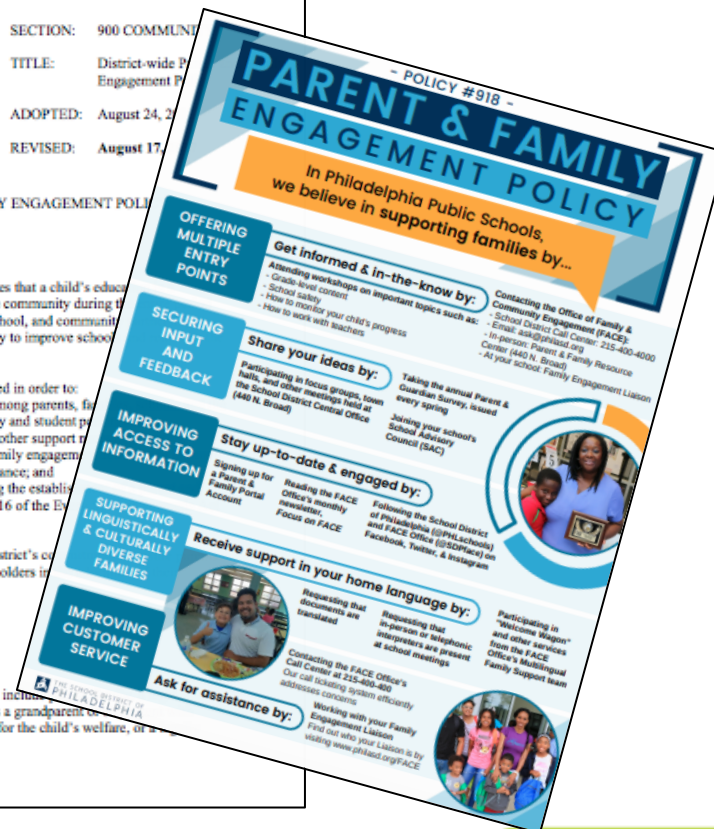
1. Support and secure strong effective partnerships among parents, families, and the community that serves to improve academic quality and student performance;
2. Provide the coordination, technical assistance and other support to schools in planning and implementing effective family engagement strategies to improve student academic achievement and school performance; and
3. Comply with Title I, Part A requirements regarding the establishment of a family engagement policy according to Section 1116 of the Elementary and Secondary Education Act (ESSA).

This policy shall serve as written documentation of the District's commitment to ensure that all families are welcomed, engaged, and valued as stakeholders in their children's education.

Definitions

District - refers to the School District of Philadelphia.

Caregiver - these terms are used interchangeably and shall include a parent, guardian or other person standing in loco parentis (such as a grandparent or other family member with whom the child lives, a person who is legally responsible for the child's welfare, or a person appointed Education Decision Maker).



PRACTICE MEANINGFUL INVOLVEMENT & TWO-WAY COMMUNICATION



THE POWER OF STRATEGY

New FACE Vision & Mission

MISSION

The Office of Family and Community Engagement will build capacity, and develop programs and strategies to support meaningful district-wide engagement and partnership among schools, families, and communities that results in shared responsibility in the creation of thriving schools where every child succeeds.

VISION

Through full partnership, all schools embrace a collaborative culture for students, families, staff and community that sustains quality family engagement and promotes school improvement and the social, emotional, and academic success of every child.



COORDINATE AND INTEGRATE SERVICES



@sdpFACE



THE POWER OF **STRATEGY**

New Theory of Change: The 3 E's of Action

ENGAGE

EDUCATE

EMPOWER

...then we will achieve a partnership based on trust, respect, and a focus on student learning between families, schools and the community.



COORDINATE AND INTEGRATE SERVICES



FACE
OFFICE OF FAMILY AND
COMMUNITY ENGAGEMENT
The School District of Philadelphia

THE POWER OF STRATEGY

Delineated the scope of the FACE Office's work

DISTRICT-WIDE PROGRAMS & INITIATIVES INCLUDE:



Offering Multiple Entry Points

School District Call Center: 215-400-4000

Parent & Family Resource Center at 440 N. Broad

Family Engagement Liaisons at school-level



Improving Access to Information

Keeping philasd.org up-to-date with information and resources

Utilizing social media platforms

Increasing usage of Parent & Family Portal



Securing Input and Feedback

Strengthening family and community involvement in school-based decision making through the District-wide implementation of the School Advisory Councils (SAC)



Supporting Linguistically and Culturally Diverse Families

Translation & Interpretation Unit: Providing translation of school-wide documents; telephonic & in-person interpretation

Multilingual Family Support Services: Helping families establish connection with school



Improving Customer Service

Soliciting feedback through the annual Parent & Guardian Survey

Utilizing a call ticketing system to address concerns



COORDINATE AND INTEGRATE SERVICES



@sdpFACE



Delineated the scope of the FACE Office's work

OFFICE OF FAMILY & COMMUNITY ENGAGEMENT

PROGRAMS AND INITIATIVES



Building families' ability to support learning at home



Family Academy: Courses & Training

Offering free workshops to families to support individual & student learning



FACE Outreach Team

School-level support for families:
- Family Engagement Liaisons
- Bilingual Counseling Assistants



Focus on FACE Newsletter

Providing resources, tools, and best practice stories for families to learn how to partner with schools



Parent & Family Portal

Allowing parents to view students' academic history, test scores, attendance, and more



Welcome Wagons

Providing resources and workshops to immigrant, refugee, & Limited English Proficient families



Developing staff members' family engagement capacity



Tune-up Tuesdays

Equipping teachers with tools and strategies for effectively partnering with families



Principal Professional Development Trainings

Providing information and resources to principals to support a family partnership culture at their school



New Teacher Induction

Giving new teachers an introduction to family engagement in Philadelphia



Welcoming Schools Training

Providing training to staff district-wide on creating safe and friendly spaces for immigrants, refugees, and asylum seekers



Supporting Family-Community-School Partnerships



School Advisory Councils

Bringing all stakeholders together to improve learning outcomes



Academic Parent-Teacher Teams

Bringing families and teachers together to help students learn



Parent & Guardian Survey

Gauging parents' perception of the school so that improvements can be collaboratively made



Special Events:

- Back-to-School Event
- Roadmap to Navigating the District Conference
- End-of-Year Celebration

THE POWER OF STRATEGY

**New action plan
and budget
proposal for
each unit
within FACE**

Funding Options	Number of Days per Year a School Can Receive Services	Family Engagement Staff to Schools Ratio	Value Added Plan: The Office of Family and Community Engagement (FACE) is undergoing a strategic reorganization to increase direct support to schools. The request for a major strategic investment in the support of family and community engagement at the school level is being requested to increase the number of Family and Community Engagement staff. This means that liaisons work with an average of 8 schools (compared to about 30 schools previously), allowing them to support each individual school community more effectively in a range of functions. The goal of this plan is to address that need.			
Option 1: 20 Family Engagement Liaisons	22 to 23 Days	1 Staff Serves 8 Schools				
Option 2: 10 Family Engagement Liaisons	14 Days	1 Staff Serves 13 Schools				
Current: 7 Staff	0 to 5 Days	1 Staff Serves 31 Schools				
Funding Option 1: 20 Family Engagement Liaisons	Per Staff Salary	Per Staff Benefits (85%)	Per Staff Salary and Benefits	Total Additional Cost of Salaries	Title I Fund (40%)	Operating Fund (60%)
	\$35,000	\$29,750	\$64,750	\$1,295,000	\$518,000	\$777,000
Funding Option 2: 10 Family Engagement Liaisons	Per Staff Salary	Per Staff Benefits (85%)	Per Staff Salary and Benefits	Total Additional Cost of Salaries	Title I Fund (40%)	Operating Fund (60%)
	\$35,000	\$29,750	\$64,750	\$647,500	\$259,000	\$388,500



COORDINATE AND INTEGRATE SERVICES



@sdpFACE

FACE
OFFICE OF FAMILY AND
COMMUNITY ENGAGEMENT
The School District of Philadelphia

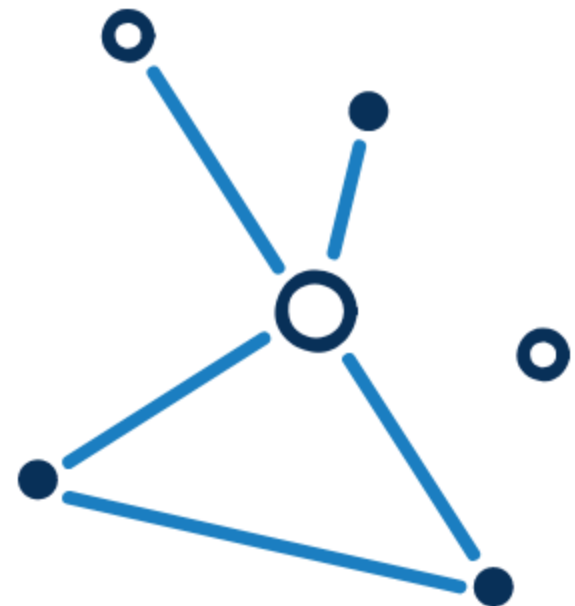
THE POWER OF STRATEGY

Reorganization of FACE Staffing Structure

Centralized



VS.



De-Centralized



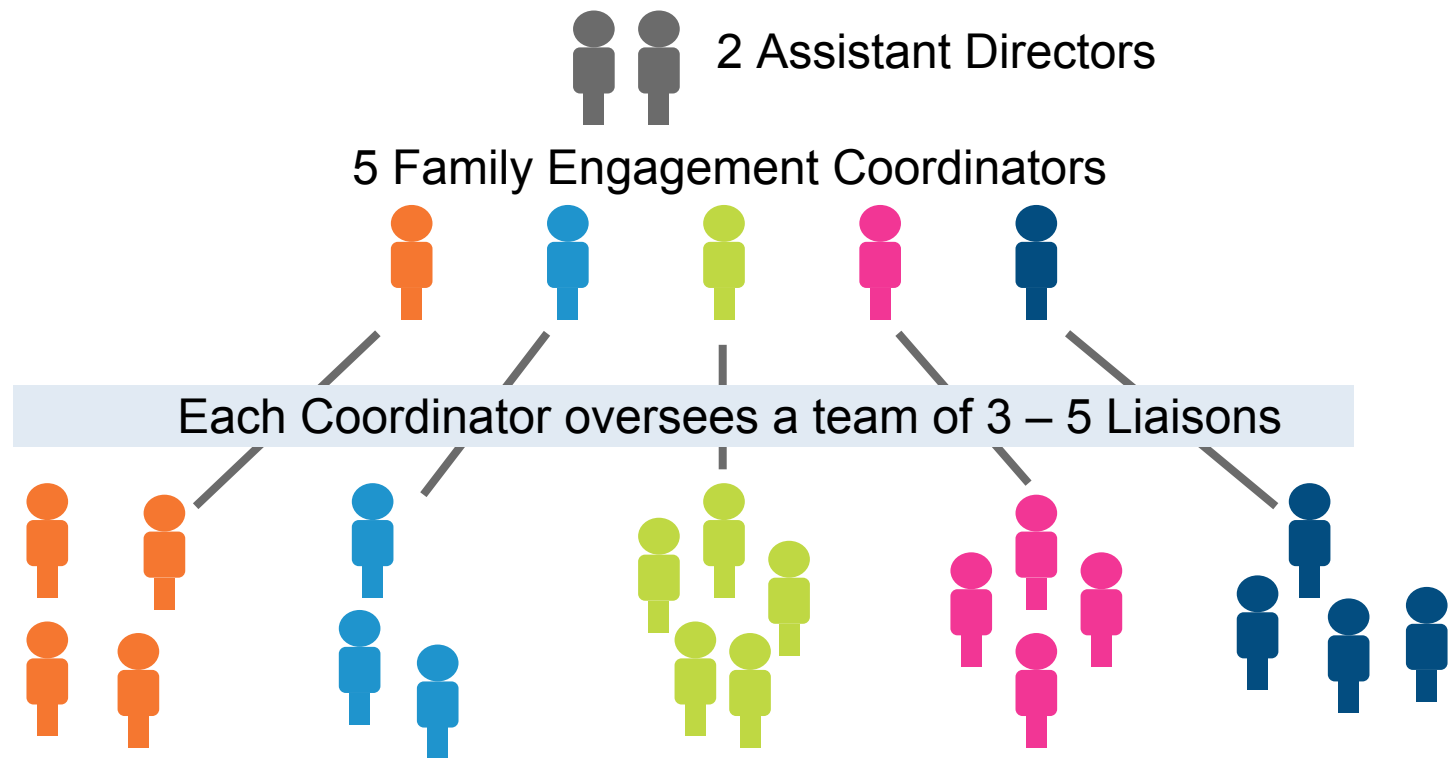
BUILD CAPACITY



FACE
OFFICE OF FAMILY AND
COMMUNITY ENGAGEMENT
The School District of Philadelphia

THE POWER OF STRATEGY

Reorganization of FACE Staffing Structure



BUILD CAPACITY



@sdpFACE

FACE
OFFICE OF FAMILY AND
COMMUNITY ENGAGEMENT
The School District of Philadelphia

THE POWER OF STRATEGY

Refined scope of work for field staff



Assist schools in development and implementation of an effective family engagement strategy at the school level.



Educates teachers and staff on how to communicate and work effectively with parents as equal partners.



Host parent workshops and meetings members to inform, educate and share techniques to assist with improved academic growth.



Helps parents understand and navigate the educational system so they can become better advocates for their children's education.



Provide information and resources that can help parents to support their children's learning at home.



Work with school and district staff to address and resolve specific family concerns.



Providing technical assistance, monitoring schools progress and keeping parents informed and involved in ESSA activities.



Implement programs at schools to increase family engagement and link to learning.



BUILD CAPACITY

THE POWER OF STRATEGY

Created new
office
framework
with Title I
compliance
alignment

Use our guide below to help you plan your calendar of family engagement events & meetings!

Your Family Engagement Calendar: SY 2018-19

Family engagement happens in all seasons!

This guide will help you align your programming with FACE and Federal requirements.

FALL

3 Fall Activities:

- 1. BACK-TO-SCHOOL NIGHT**

When do I schedule? Between September 2 - September 28, 2018

What is it? Welcome families; review school rules and culture; teacher meet-and-greet for families.
- 2. FALL TITLE I FAMILY ENGAGEMENT MEETING**

When do I schedule? Between September 2 - October 26, 2018

What is it? In-person meeting with families to communicate the required Title I and ESSA information as well as gain families' support in implementing the school's family engagement programs.
- 3. FALL SCHOOL ADVISORY COUNCIL MEETING(S)**

When do I schedule? Between September 2 - November 30, 2018

What is it? Should include families, community members, staff, and students (grades 7-12) to discuss ways to collectively and collaboratively improve the school.

FACE'S TIP You may consider combining your Fall Annual Title I Meeting with your Fall SAC meeting, as long as ALL families are invited (not just SAC members). You may also choose to hold your Fall Annual Title I Meeting, Fall SAC Meeting, AND your Back-to-School Night on the same date. However, the SAC meeting must occur separately from the Back-to-School Night, as SAC meetings are meant to be strategic, discussion-based meetings vs. the "meet-and-greet"/info session style of Back-to-School Nights.

WINTER

2 Winter Activities:

- 1. WINTER TITLE I FAMILY ENGAGEMENT MEETING**

When do I schedule? Between December 1, 2018 - February 8, 2019

What is it? Parental input is given into the Schoolwide Plan and the School Budget.
- 2. WINTER SAC MEETING(S)**

When do I schedule? Between December 1, 2018 - February 28, 2019

What is it? Should include families, community members, staff, and students (grades 7-12) to discuss ways to collectively and collaboratively improve the school.

FACE'S TIP It is best practice to combine your Winter Title I Parental Input Meeting with one of your Winter SAC meetings. The FACE Office recommends combining these meetings, but please be aware that ALL families must have the opportunity to provide input, not just SAC families.

Note on SAC Meetings...
At minimum, schools are required to have 4 School Advisory Council (SAC) meetings during the school year. FACE recommends that you schedule 2 SAC meetings during the Fall, 1 SAC meeting during the Winter, and 1 SAC meeting during the Spring.

SPRING

2 Spring Activities:

- 1. SPRING TITLE I FAMILY ENGAGEMENT MEETING**

When do I schedule? Between March 4 - April 12, 2019

What is it? Parental input is given into the School-Parent Compact and Parent and Family Engagement Policy.
- 2. SPRING SAC MEETING(S)**

When do I schedule? Between March 4 - May 31, 2019

What is it? Should include families, community members, staff, and students (grades 7-12) to discuss ways to collectively and collaboratively improve the school.

FACE'S TIP It is best practice to combine your Spring Title I Parental Input Meeting with one of your Spring SAC meetings. The FACE Office recommends combining these meetings, but please be aware that ALL families must have the opportunity to provide input, not just SAC families.

Directions

Please fill out the FACE Family Engagement Calendar Survey to let us know about your family engagement programming for the 2018-2019 school year.

Priority 1 Schools should pick dates that their Family Engagement Liaison will be scheduled at their school.



COORDINATE AND INTEGRATE SERVICES



@sdpFACE



School Family Engagement Framework



THE POWER OF COMMUNICATION

MULTIPLE MODES OF COMMUNICATION



PRINT

- Flyers
- Brochures
- Palm Cards
- Post Cards



DIGITAL

- Website
- Videos
- E-Newsletter
- Email Marketing
- Robo-calls/texts



SOCIAL MEDIA

- Facebook
- Twitter
- Instagram



CONDUCT OUTREACH & PRACTICE TWO-WAY COMMUNICATION



@sdpFACE



THE POWER OF COMMUNICATION

Utilizing creative tools to create polished materials



Constant Contact

Newsletters
Announcements
Direct Email Marketing



Canva

Social Media Posts
Flyers
Logos
Presentations



PowToon

Videos
Presentations
Slideshows



Piktochart

Reports
Graphs
Infographics



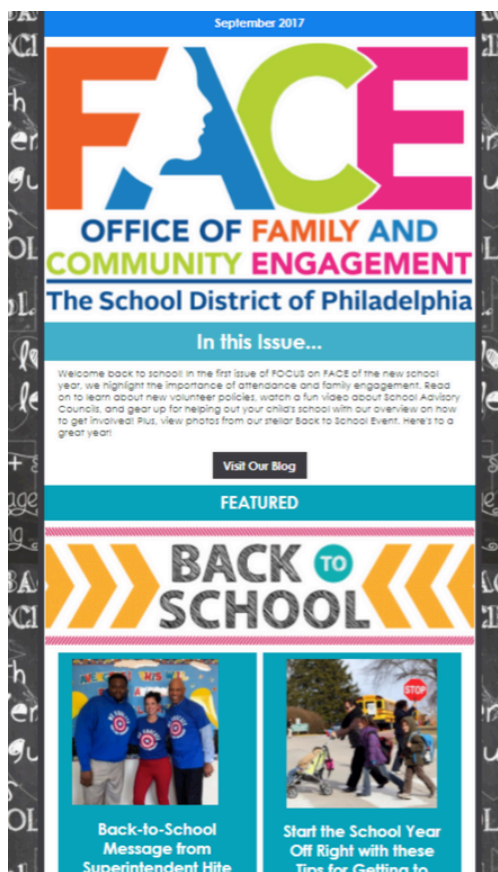
CONDUCT OUTREACH



THE POWER OF COMMUNICATION

Focus on FACE Email Newsletter

- Best practices in family engagement
- Family Leaders spotlight
- Interviews with staff members and principals
- Helpful resources and information
- District announcements
- Community events and programs



FAMILY SPOTLIGHT

From the Parent's Desk: Joey McAteer on the Importance of Public Education and Being Engaged

"Without good, quality education, communities fall apart," Joey McAteer, a parent of two students at Adaire School, says. "It's a real shame that we as Americans do not value what can be learned in our schools. So often we hear people and politicians railing against teachers, but they do so little to help..."

MULTILINGUAL FAMILY SPOTLIGHT

Spanish Speakers participate in Volunteer Orientation at Central Office

On Thursday, November 9, Language Access Coordinators from the FACE Office's Translation and Interpretation unit delivered a Volunteer Orientation entirely in Spanish!

SCHOOL SPOTLIGHT

CHECKLIST: Is Your School 'Family-Friendly' and Welcoming to All?

"Imagine walking into a school where the signs are unfamiliar to you and no one offers to show you around," notes Robin Hamby, a family services specialist in Virginia's Fairfax County schools. "Maybe you had a bad school experience yourself or come from a country where school participation is discouraged. Parents bring with them all sorts of baggage that can hinder the process of creating a strong bond with the school." Read on to learn more!

[Read More](#)

[Download the Checklist](#)



PRACTICE TWO-WAY COMMUNICATION



THE POWER OF COMMUNICATION

SUKSESI NË MOSHËN PESË VJECARE

DO TE JETE FEMIJA JUAJ 5 VJEC
DERI NE 1 SHTATOR, 2019?

NËQOFTËSE PO,
REGJISTRIMI PËR
KOPËSHT FILLON NGA
22 JANAR, 2018 DERI
NË 31 MAJ, 2019

OPEN HOUSE DAY
PËR KOPËSHT
5 MARS, 2019

KOPËSHT PËR OPEN
HOUSE JAVËN
MAJ 6-10, 2019



PESE FAZAT PER TE REGJISTRUAR

- 1 Shkoni në faqen e internetit të Regjistrimit të Kopësht: www.philasd.org/kregistration
- 2 Gjeni shkollën tuaj: www.philasd.org/schoolfinder/sq
- 3 Mbledhni dokumentet tuaja të regjistrimit
- 4 Shkoni në shkollën tuaj të lagjes për të regjistruar fëmijën tuaj
- 5 Filloni me fillimin tuaj për kopëshin

 THE SCHOOL DISTRICT OF
PHILADELPHIA

PESE DOKUMENTA PËR TË REGJISTRUAR

- ☒ Kartë identifikuese: prind / kujdestar
- ☒ Dëshmi për moshën e fëmijës
- ☒ Rekordet e fundit të imunizimit të fëmijës
- ☒ > 2 dokumente që tregojnë vendbanimin

Telefononi Zyrtë e Regjistrimit dhe
Vendosjes së nxënësve në 215-400-4290
për ndihmë.

www.PhilaSD.org/kregistration (ALBANIAN)

Making meetings and materials accessible in multiple languages

Providing interpreters and/or
translating documents into the
major languages of the District:


- Spanish
- Chinese
- Arabic
- French
- Vietnamese
- Khmer
- Russian
- Albanian

 PROMOTE ACCESSIBILITY

THE POWER OF INNOVATION

New events and programs to reinvigorate culture of family engagement across the district and city

Family Engagement Month



Promoting Family and Community Engagement in Education

A Conversation With
Hill Harper
Award-Winning Actor, Author, and Philanthropist




ACHIEVING SUCCESS FOR ALL STUDENTS.

Join us for this memorable experience as Harper shares his views on parental engagement in education, the importance of community involvement, and academic learning as a top priority, and a necessary tool for student success.

Continental Breakfast and Interpretation Services will be provided.

Friday, October 13, 2017
10am - 12pm
School District of Philadelphia: 440 N. Broad Street

RSVP
www.philasd.org/face/events
(215) 400-4180 option 5

Presented by:
  

#MapMyEducation #FamilyEngagementMonth



A Roadmap to NAVIGATING
the School District of Philadelphia

FAMILY ENGAGEMENT CONFERENCE

Join us for...
WORKSHOPS • VENDORS
SCHOOL SUPPLIES
WINTER COATS • GIVEAWAYS
UNIFORM VOUCHERS
LUNCH • CHILD CARE

REGISTER:
WWW.PHILASD.ORG/FACE/EVENTS
215-400-4180, OPTION #5



PRACTICE MEANINGFUL INVOLVEMENT



FACE
OFFICE OF FAMILY AND
COMMUNITY ENGAGEMENT
The School District of Philadelphia

THE POWER OF INNOVATION

New events and programs to reinvigorate culture of family engagement across the district and city

Family Engagement Awards



✓ PRACTICE MEANINGFUL INVOLVEMENT

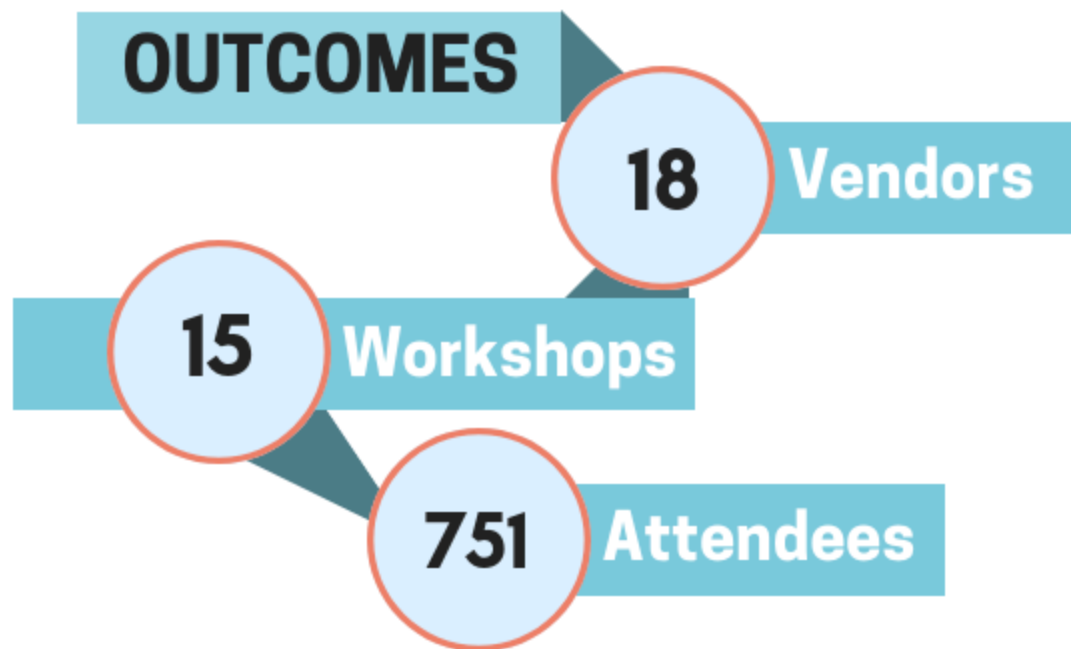


FACE
OFFICE OF FAMILY AND
COMMUNITY ENGAGEMENT
The School District of Philadelphia

THE POWER OF INNOVATION

New events and programs to reinvigorate culture of family engagement across the district and city

"Roadmap to Navigating the School District" Conference



PRACTICE MEANINGFUL INVOLVEMENT



@sdpFACE



THE POWER OF INNOVATION

New events and programs to reinvigorate culture of family engagement across the district and city

2015-2016

18%
of schools
have a SAC

2016-2017

63%
of schools
have a SAC

2017-2018

94%
of schools
have a SAC

**School
Advisory
Councils
(SACs)**



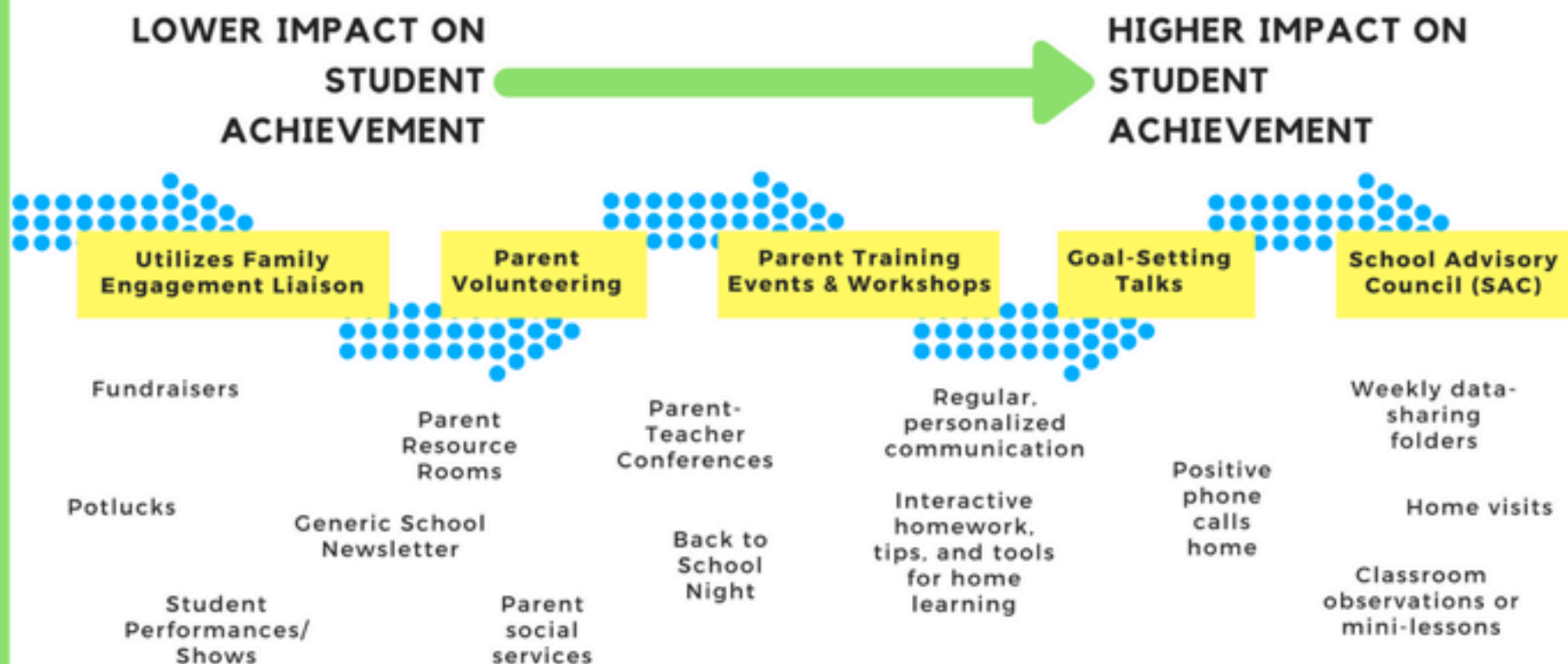
PRACTICE MEANINGFUL INVOLVEMENT



@sdpFACE



WHERE DOES YOUR SCHOOL FALL ON THE SPECTRUM OF FAMILY ENGAGEMENT?



Growing Pains

Work Must be Contextual

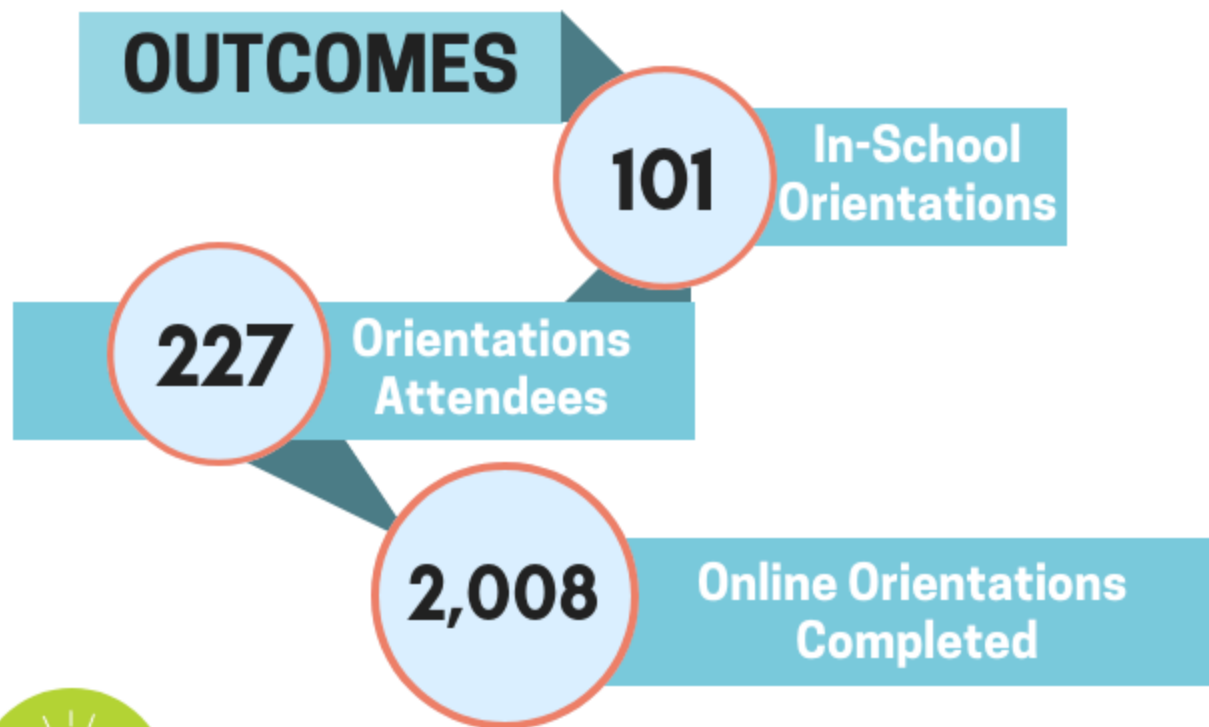
Silver Bullet

Adapted from: Harvard Family Research Project. Achieving Excellence and Innovation in Family, School, and Community Engagement Webinar Series. Building Strategic Partnerships to Foster Community Engagement in Education.

THE POWER OF INNOVATION

Addressing challenges in creative ways

**New
Volunteer
Policy**



PROMOTE ACCESSIBILITY



@sdpFACE



THE POWER OF INNOVATION

Using evidence-based approaches

Academic Parent-Teacher Teams (APTT)

IT'S TIME TO
**TEAM
UP**
FOR
Student Success!

Our classroom is trying something new this year!
We are bringing families and staff together
through **Academic Parent-Teacher Teams (APTT)**,
where families and teachers team up to help
students learn and succeed in school!

THE SCHOOL CITY OF PHILADELPHIA **FACE**

McClure School
**Join Our Academic
Parent-Teacher Team!**

APTT Meeting Schedule

MEETING	DATE	TIME
Fall Meeting	Thursday, October 25	4:00-5:15 PM
Winter Meeting	Thursday, January 31	1:00-2:15 PM
Spring Meeting	Thursday, April 4	1:00-2:15 PM

THE SCHOOL CITY OF PHILADELPHIA **FACE**



DEVELOP EVIDENCE-BASED STRATEGIES



@sdpFACE



THE POWER OF INNOVATION

Using evidence-based approaches



Promoting Wellbeing



Getting Involved



Raising Your Child

FACT

FAMILY ACADEMY COURSES & TRAINING



Supporting Student Success



Maximizing Potential



New Americans

**Family trainings
that are linked
to learning**

Family Academy:
Courses & Training
(FACT)



DEVELOP EVIDENCE-BASED STRATEGIES



@sdpFACE



THE POWER OF CAPACITY-BUILDING SUPPORT

Dual capacity-building model of Professional Development

Family Academy: Courses & Training (FACT)

WHAT IS FACT?

Family Academy: Courses & Training (FACT) provides FREE classes and workshops to families and the community.

Do you need tips for supporting your child's learning? Need help understanding the school district? Want to improve your own skills? Our courses can help you accomplish your goals and support your child's growth. #GetTheFACTs at www.philasd.org/face/FACT.

SIX LEARNING STRANDS:

- Raising Your Child
Effective Parenting
- Getting Involved
Leadership & Advocacy
- Promoting Wellbeing
Health & Wellness
- Supporting Student Success
Navigating the School System
- Maximizing Potential
Personal Growth & Development
- New Americans
Connecting with non-English Speaking Families

FACT takes place in 12 locations across Philadelphia!

Go to philasd.org/face/FACT to view all FACT locations

HOW DO I SIGN UP?

Family Resource Center @

LEARN where you LIVE with Family Academy: Courses & Training

Learn More & Register: www.philasd.org/face/FACT

FACE
OFFICE OF FAMILY AND COMMUNITY ENGAGEMENT
The School District of Philadelphia



BUILD CAPACITY

THE POWER OF CAPACITY-BUILDING SUPPORT

Dual capacity-building model of Professional Development

Professional Development trainings for FACE staff:

- Overview of policies and procedures
- Family engagement best practices
- Partnering with principals

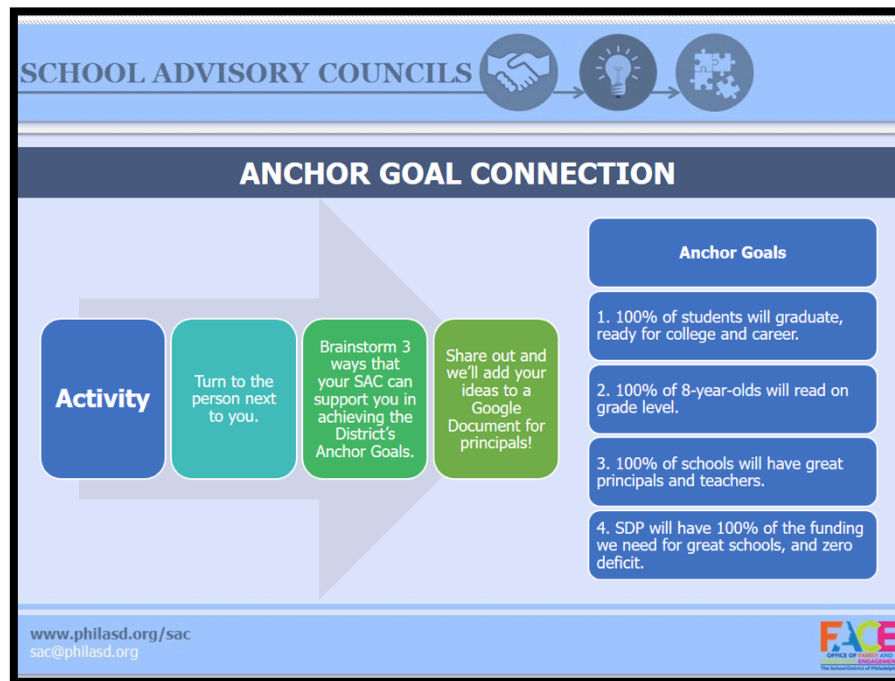


BUILD CAPACITY



THE POWER OF CAPACITY-BUILDING SUPPORT

Dual capacity-building model of Professional Development



Professional Development trainings for Principals:

- Understanding Policies and Best Practice
- Making family engagement program seen as value add vs. an “add on”
- Choosing projects that align with principal’s goals for the school



BUILD CAPACITY & ADDRESS BARRIERS



@sdpFACE



THE POWER OF CAPACITY-BUILDING SUPPORT

Dual capacity-building model of Professional Development

Professional Development trainings for Teachers:

FACE 101:

Introduction to
Successful
Family School
Partnerships

How to Talk to Parents:

Communicating
with Parents
during Sensitive
or Difficult
Conversations

Making Your
Classroom
Parent-Friendly
to **Families of
English
Learners**

Talking to
Parents About
**School and
Student Data**

**Effective
Two-Way
Communication**
between
Schools and
Families



BUILD CAPACITY & ADDRESS BARRIERS

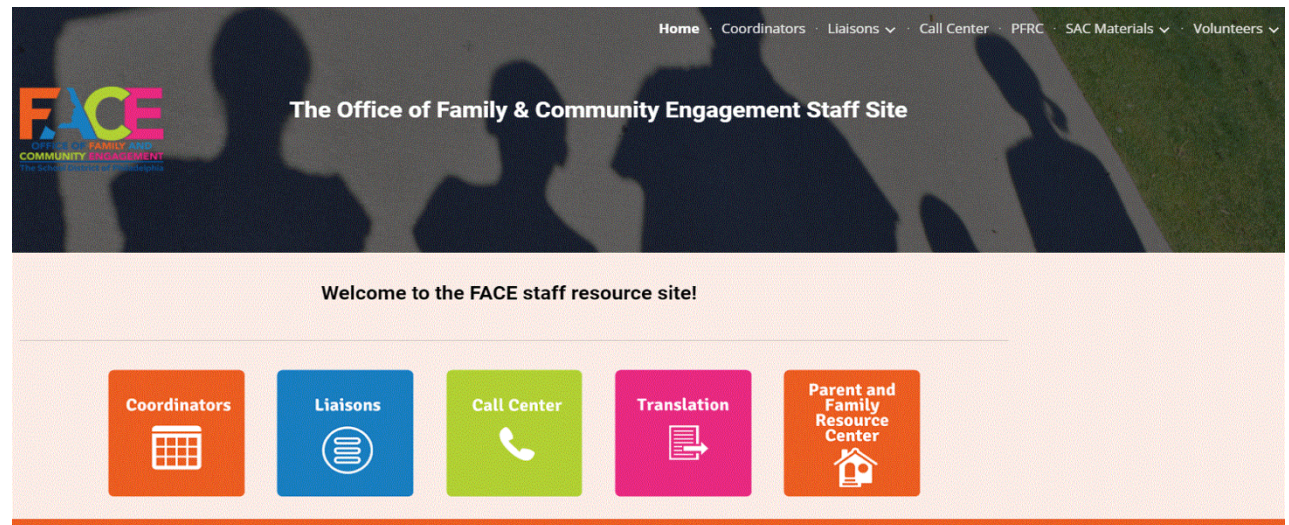


@sdpFACE



THE POWER OF DATA & ANALYTICS

FACE Staff Website



COORDINATE AND INTEGRATE SERVICES



THE POWER OF DATA & ANALYTICS

Progress Monitoring Tools & Dashboards

OFFICE OF

Family & Community Engagement

YOU ARE HERE > Family & Community Engagement > Private: FACE Launchpad

  215-400-4180 Portal: A Suite: 114

[Home](#)

[About](#) ▾

[Programs & Services](#) ▾

[Family Resources](#) ▾

[Volunteers](#) ▾

[Family Academy](#)

[Focus on FACE](#) ▾

[Contact](#)

Staff Site



The Family Concern System



Document Collection System



Family Engagement Dates
Collection



The SAC Status and Member
Dashboards



Translation Request Fulfilment



Interpretation Request
Fulfilment



FACE Data Directory



COORDINATE AND INTEGRATE SERVICES



@sdpFACE



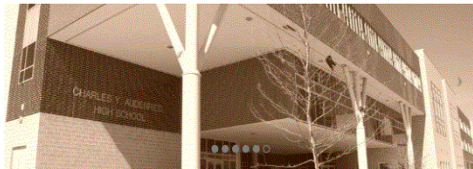
THE POWER OF DATA & ANALYTICS

OFFICE OF Family & Community Engagement

215-400-4180 Portal: A Suite: 114

Home About Programs & Services Family Resources Volunteers Family Academy

Private: Family Concern System



Send a FACE Notification

Notifications will generally begin from the call center, but will also be used by Liaisons when a concern is about the unresponsiveness of an SEL.

Open a New Family Concern Case (Open)

This form is necessary to open new Family Concern Cases.

Family Co Referral (Close)

Close your case by the case to its doc

Edit this entry.

Last modified: August 29, 2017



© The School District of Philadelphia
440 N. Broad Street, Philadelphia, PA 19130
215-400-4000

Terms of Use Privacy



Family Concerns

Category Break-Down

Network

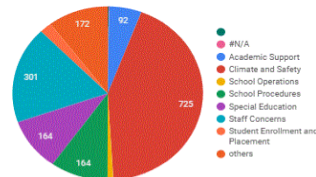
*Each page must be filtered independently. To filter, select a network above. To view all, unselect your selection.

Family Concerns Per School

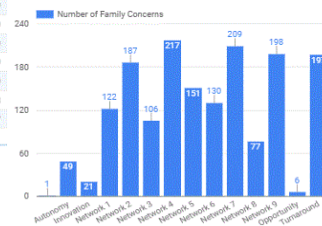
School Name	Count	Category
Heaton, Edward - 4309	33	
Carnell, Laura H. - 7220	32	
Gideon, Edward - 4530	29	
Forrest, Edwin - 8250	29	
Webster, John - 5590	27	
McKinley, William - 5350	24	
Wagner, General Louis - 7130	24	
Lamberton, Robert - 4320	24	
Hamilton, Andrew - 1290	21	
Cassidy, Lewis C. - 4240	21	
Franklin, Benjamin Elementary - ...	21	
Steel, Edward - 6390	21	
Roosevelt, Theodore - 6360	20	
Overbrook High School - 4020	19	
Meade, General George G. - 4570	19	
Bethune, Mary M. - 7510	19	
Harrington, Avery D. - 1300	19	
Brown, Henry A. - 5210	19	
Powell, Samuel - 1390	18	
Diston, Hamilton - 8240	17	

Number of Concerns Addressed: 1,671

Family Concerns By Category



Family Concerns By Network (Year-To-Date)



Concern Report 2017-2018

FACE Operations

Family Concerns System

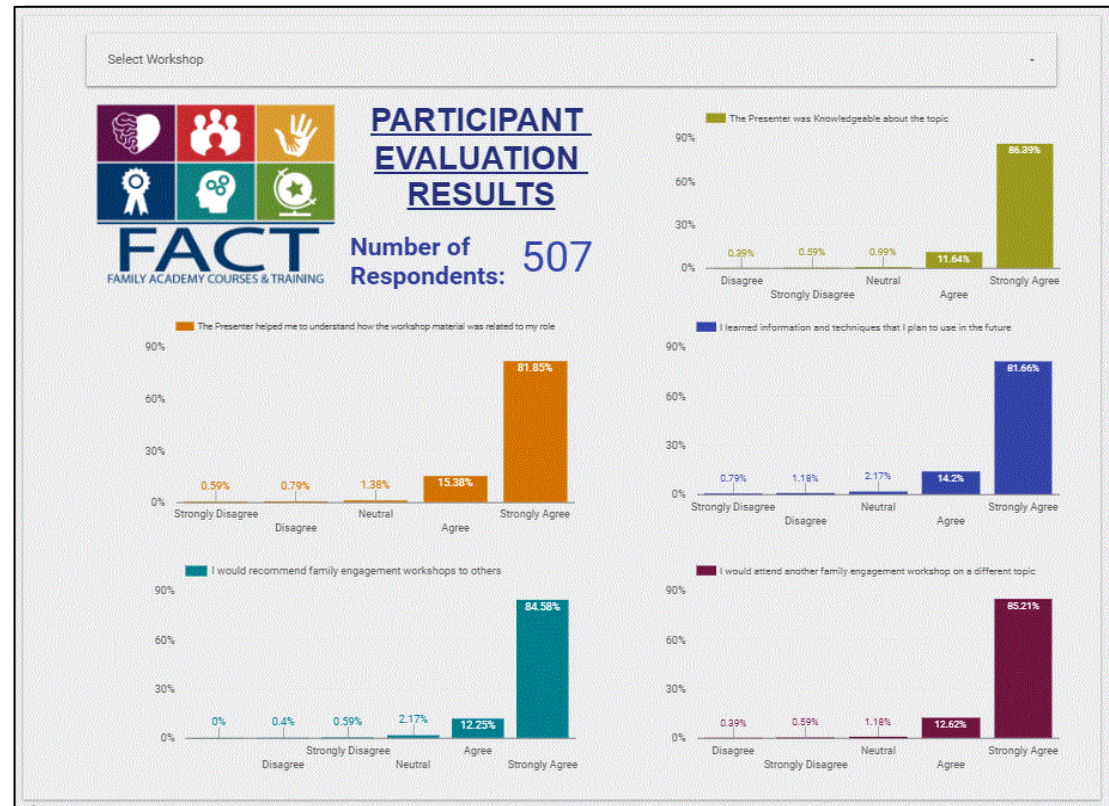


COORDINATE AND INTEGRATE SERVICES & ADDRESS BARRIERS



THE POWER OF DATA & ANALYTICS

FACT Attendance & Evaluation Results

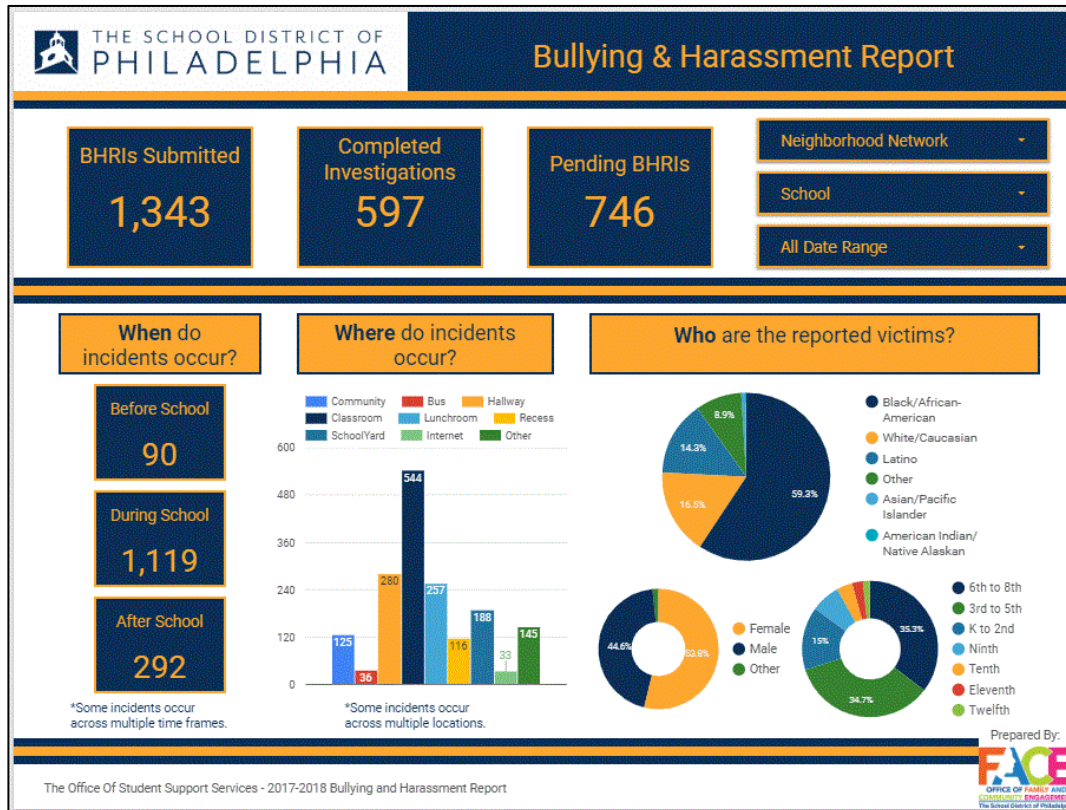


DEVELOP EVIDENCE-BASED STRATEGIES



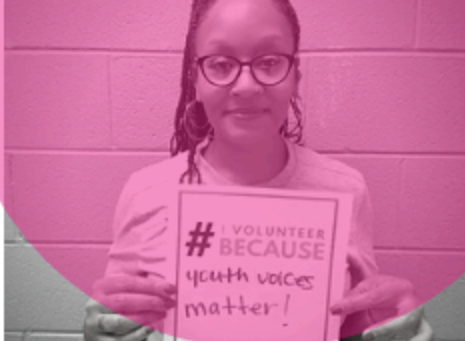
THE POWER OF DATA & ANALYTICS

Bullying & Harassment System



COORDINATE AND INTEGRATE SERVICES & ADDRESS BARRIERS





THANK YOU!

FOLLOW OUR JOURNEY:



Social: @sdpFACE



Web: www.philasd.org/FACE



Subscribe: <http://bit.ly/2sv9NTr>



FACE
OFFICE OF FAMILY AND
COMMUNITY ENGAGEMENT
The School District of Philadelphia