



2020-21 Standings -- As of Mon., Mar. 1

	MISSOURI VALLEY				OVERALL				
	Record	Pct.	PF	PA	Record	Pct.	PF	PA	NET
#19/23 Missouri State	14-0	1.000	67.9	57.6	18-2	.900	69.4	57.5	22
Drake	11-5	.688	76.7	62.5	13-10	.565	77.3	68.4	46
Illinois State	10-6	.625	63.1	58.2	13-6	.684	70.1	59.8	63
Northern Iowa	9-7	.563	72.4	65.4	12-11	.522	71.5	67.8	76
Valparaiso	7-7	.500	63.0	63.1	11-10	.524	64.3	64.3	124
Bradley	8-8	.500	68.6	65.3	12-11	.522	70.1	66.0	87
Loyola	8-8	.500	56.2	56.9	10-10	.500	59.0	58.9	138
Southern Illinois	5-11	.313	59.1	62.9	8-13	.381	60.0	63.0	154
Indiana State	2-10	.167	57.7	75.8	5-12	.294	61.9	74.1	271
Evansville	2-14	.125	47.1	67.3	6-15	.286	55.3	69.8	298

• • MVC Home: 39-37 • • Non-Conference: 32-24 • Home: 20-7 • Away: 11-16 • Neutral: 1-1 • Top-25: 2-2 • •

Recent Results/ Upcoming Schedule

Wednesday, February 24

Evansville at Indiana StateINS, 85-69
 Drake at UNIDU, 77-56
 #19 Missouri State at Southern Illinois ..MSU, 67-55
 Valparaiso at LoyolaVU, 57-55

Thursday, February 25

Illinois State at BradleyILS, 79-59

Saturday, February 27

Evansville at UNIUNI, 67-31
 Valparaiso at Southern IllinoisVU, 75-64
 Loyola at #19 Missouri StateMSU, 64-50

Sunday, February 28

Evansville at UNIUNI, 96-48
 Valparaiso at Southern Illinois.....VU, 70-63 (OT)
 Loyola at #23 Missouri StateMSU, 59-45

Friday, March 5

Illinois State at Loyola (ESPN+)3 PM
 UNI at Southern Illinois (ESPN3)4 PM
 Valparaiso at Drake (ESPN3+).....5 PM
 Missouri State at Evansville (ESPN3+)6 PM
 Indiana State at Bradley (ESPN3+)6 PM

Saturday, March 6

Illinois State at Loyola (ESPN+)3 PM
 Valparaiso at Drake (ESPN3+).....3 PM
 Indiana State at Bradley (ESPN3+)4 PM
 UNI at Southern Illinois (ESPN3)4 PM
 Missouri State at Evansville (ESPN3+)6 PM

END OF REGULAR SEASON
ALL TIMES CENTRAL



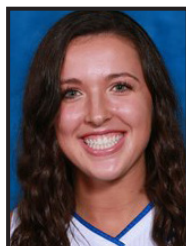
MVC Player of the Week

Jasmine Franklin, Jr., F, Missouri State

Jasmine Franklin averaged 17 points and 12.3 rebounds in Missouri State's three wins, shooting 54 percent overall and 79 percent at the foul line with six steals and two blocks. Franklin collected career-high 17 rebounds in Sunday's game against Loyola, the most at MSU since 2009 and tying for the No. 7 single-game total in school history. She added three steals and 12 points for her eighth double-double of the season, all in MVC play. Saturday against the Ramblers, Franklin scored a career-high 25 points on 11-for-

13 shooting to go with 11 boards and two steals. Wednesday at Southern Illinois, Franklin totaled 14 points, nine boards, two blocks and a steal.

Other Notable Performances: Gabi Haack (BU); Grace Berg (DU); Abby Feit (UE); Mary Crompton (ILS); Adrian Folks (INS); Allison Day (LUC); Kam Finley (UNI); Makenzie Silvey (SIU); Shay Frederick (VU)



MVC Newcomer of the Week

Grace Berg, RSo., F, Drake

Grace Berg scored a game-high 18 points in Drake's win at UNI in the team's lone contest last week. Berg started hot with eight points in the first five minutes of the game. She has scored double figures in 20 games this season. Berg finished 7-of-14 from the floor with one three and went 3-of-3 from the free throw line and added six rebounds and two assists in 25 minutes. Berg is second in the MVC in scoring at 16.7 points per game while leading the league in shooting at 54.2 percent and

free throw percentage at 84.0 percent.

Other Notable Performances: TeTe Danso (BU); Rylie Stephens (UE); Terrion Moore (ILS); Sitori Tanin (LUC); Kayba Laube (UNI); Lauren Gunn (VU)

NOTEWORTHY

In addition to the league's Player and Newcomer of the Week selections, several conference players had notable performances, including:

Gabi Haack (BRAD) - Haack scored a game-high 23 points on 8-of-12 shooting as she connected on 5-of-8 from beyond the arc to pace Bradley against Illinois State Thursday. She also pulled down six rebounds and dished out three assists without a turnover as she became the first player in MVC history to hit 60 or more three-pointers in four different seasons. Haack, who turned in her 14th career performance in which she made five or more three-pointers, climbed three spots on the MVC career three-point field goal list into fifth and also scored 20 or more in a game for the 25th time in her career.

Abby Feit (UE) - In a pair of contests against UNI this weekend, Sophomore Abby Feit was able to get the job done in multiples ways. Scoring just six points on Saturday, Feit dominated the boards, recording 13 rebounds to lead the Aces. Feit got back to scoring on Sunday, tying for the team high with 14 points.

Mary Crompton (ILS) - Redshirt sophomore Mary Crompton finished with a team-high 14 points in ISU's 79-59 win over Bradley on Thursday, helping the 'Birds sweep the Braves for the first time since the 2011-12 season. The guard shot 4-of-6 (66.7%) from three and went a perfect 2-of-2 from the charity stripe as she surpassed the 500-point mark, now with 513 career points in just 52 games played. The 8th-best three-point shooter in the nation in terms of percentage (46.2%), Crompton has now made 48 triples on the year, just five threes shy of the ISU sophomore three-point record, after having set the freshman record during the 2019-20 campaign.

Adrain Folks (INS) - Adrian Folks had a career evening on Wednesday night to help lead the Sycamores to a senior night victory over Evansville. The sophomore recorded a career-best 23 points and 13 rebounds to go along with two steals and a block. In addition to her impressive stat line, Folks ended the night 7-of-8 from the free throw line and is now averaging a team-best 10.3 points per game. Her 6.3 rebounds per game are now seventh in the Valley.

Allison Day (LUC) - Loyola junior forward Allison Day averaged team-high marks in both points (10.3 ppg) and rebounds (6.3 rpg) in Loyola's three matchups last week. After finishing with four points (2-10 FGs) and seven rebounds in Wednesday's home tilt with Valparaiso, the Russellville, Ohio native led the Ramblers in both of their clashes with No. 23/19 Missouri State. Day added 13 points (6-12 FGs, 1-2 3FGs) and eight rebounds in Saturday's clash before besting that on Sunday, closing the weekend with a 14-point (5-9 FGs, 4-6 FTs), four-rebound showing. Day, who leads the Maroon & Gold in scoring (11.1 ppg), enters the final week of the regular season ranked second in the MVC in field goal percentage, operating at a 54.1 percent clip from the field.

Kam Finley (UNI) - Kam Finley recorded nine points, three rebounds and three assists on Saturday against the Aces. On Sunday, Finley recorded a game-high 17 points, went 5-8 from the three-point line, 100.0% from the free-throw line and was overall 50.0% from the field. Finley scored the 17th three-pointer that claimed the newest MVC record and UNI women's basketball record for 3-Pt Field Goals Made. The Panthers ended the game with 21 total three-pointers, five of which her Finley's.

Makenzie Silvey (SIU) - Makenzie Silvey averaged 17.5 points, 8.0 rebounds, 3.0 assists and 1.5 steals in 40.1 minutes per game against Valpo over the weekend. The senior guard went for 16 points and snagged six rebounds in Saturday night's game and followed with the first double-double of her career on Sunday night. The Glen Carbon, Ill. native finished with 19 points and 10 boards.

Shay Frederick (VALPO) - Wednesday, a game-winning basket. Saturday, a career-best point total and a program-record shooting performance. Sunday, another 20-point game and a late basket to force OT. Frederick stood out in all three games last week to help extend Valpo's win streak to four straight games, its longest within conference play since 2007. The junior hit the game-winning layup in Valpo's victory at Loyola in mid-week action with 5.2 seconds to play on just her third shot attempt of the game. Then, at SIU this weekend, Frederick kicked things off with a career-best 28 points and six assists. She went 6-for-6 from behind the arc, setting a program record for most 3's made without a miss and leading the way as Valpo matched the best 3-point shooting performance by a D-I team since 2011. Sunday, Frederick led all players with 20 points, matched her career high with nine rebounds and handed out a game-best six assists. Her basket with 11.7 seconds remaining in regulation forced OT, and she then scored five of Valpo's 13 points in the extra period to secure the win.

TeTe Danso (BRAD) - Danso made her first career start in last week's game against Illinois State, pulling down a team-best seven rebounds in just 15 minutes of action. She also had two points, two assists, one block and one steal against the Redbirds.

Rylie Stephens (UE) - In a weekend road trip to UNI, freshman Rylie Stephens averaged 7.5 points and five boards per contest, including eight points in Sunday's series finale. Heading into the final weekend, Stephens is third on the team in scoring, averaging 6.6 points per game.

Terrion Moore (ILS) - Junior Terrion Moore recorded eight points and a game-best eight rebounds while also defending Valley leading scorer Lasha Petree, limiting her to just nine fourth-quarter points on 4-of-13 (30.8%) shooting in ISU's 79-59 win over Bradley on Thursday in Peoria, Ill. Moore put in a game-high 38 minutes on the court, adding an assist, a block and a steal in the contest. The Kansas City, Kan. native is averaging 11.0 points in her debut season as a Redbird, also ranking fourth in the MVC with 1.9 steals per game.

Sitori Tanin (LUC) - Loyola freshman forward Sitori Tanin was dominant on the defensive end of the floor in Loyola's three games last week, averaging a staggering 2.7 blocks per game in addition to 7.0 points and 4.0 rebounds. In Wednesday's home matchup with Valparaiso, Tanin scored 11 points (4-7 FGs, 3-5 FTs), grabbed six rebounds, and recorded three blocks. Tanin went back to work inside in Saturday's series opener with No. 23/19 Missouri State, swatting a season-high four shots to go along with eight points (2-2 FGs, 4-4 FTs). She added another rejection in Sunday's meeting with the Lady Bears, also adding two points (1-4 FGs) and six rebounds. Since the start of MVC play, Tanin ranks second in The Valley in blocked shots per game (1.3 bpg).

Kayba Laube (UNI) - Kayba Laube scored eight three-pointers throughout the recent series against Evansville. On Feb. 27, Laube scored nine total points, all being three-pointers and on Feb. 28, she tied her career-high five three-pointers and created a new career-high 15 points. She scored a clutch buzzer beat from beyond the arc against Evansville on Sunday and also grabbed three steals, three assists, three rebounds and one block over the weekend.

Lauren Gunn (VALPO) - Gunn averaged 5.3 points/game over Valpo's three wins last week. The freshman handed out a season-best three assists in its mid-week win at Loyola, and then scored seven points in both of Valpo's victories at SIU, shooting 5-of-7 from the floor over the two games, including 3-of-3 from 3-point range. Her 3-pointer early in overtime in Sunday's win gave Valpo its first lead since the first quarter, a lead it would not relinquish.

PLAYERS OF THE WEEK

DATE	PLAYER	SCHOOL
N30	Brice Calip	Missouri State
D7	Grace White	Valparaiso
D14	Lasha Petree	Bradley
D21	Abby Feit	Evansville
D30	Maggie Bair	Drake
J4	Bre Gunnels	UNI
J11	Lasha Petree	Bradley
J19	Brice Calip	Missouri State
J25	Brice Calip	Missouri State
F1	Brice Calip	Missouri State
F8	Gabi Haack	Bradley
F15	Jasmine Franklin	Missouri State
F22	Makenzie Silvey	Southern Illinois
M1	Jasmine Franklin	Missouri State
M8		

NEWCOMERS OF THE WEEK

DATE	PLAYER	SCHOOL
N30	Grace Berg	Drake
D7	Grace Berg	Drake
D14	Essy Latu	Indiana State
D21	Grace Berg	Drake
D30	Bre Hampton-Bey	Loyola
J4	Adrianna Katcher	Southern Illinois
J11	Grace Berg	Drake
J19	Grace Berg	Drake
J25	Maya McDermott	UNI
F1	Terrion Moore	Illinois State
F8	Grace Berg	Drake
F15	Sitori Tanin	Loyola
F22	Terrion Moore	Illinois State
M1	Grace Berg	Drake
M8		

MVC Players and Newcomers of the Week are selected each week during the women's basketball season. The players are announced on Monday afternoon and appear in a weekly press release. Nominees are provided by each school's sports information contact and voted on by a panel appointed by the league office.

Still Perfect

Missouri State is now 14-0 in MVC play for the first time in school history. The Lady Bears join UConn (17-0), Florida Gulf Coast (14-0), UC Davis (8-0), Bucknell (8-0), SFA (12-0), South Dakota State (14-0), and Cal Baptist (12-0) as the only remaining teams perfect in league play.

Perfect Seasons

Only four times in the history of The Valley/Gateway has a team finished league play unbeaten. Southern Illinois did it in back-to-back seasons in 1985-86 and 1986-87, while Drake did it in 2016-17 and 2017-18. Three of the four teams went on to win the league tournament (no tourney in 1986).

Record	Team	Year	MVC Finish	MVC Tourney
18-0	DU	2017-18	1st	Champs
18-0	DU	2016-17	1st	Champs
18-0	SIU	1986-87	1st	Champs
18-0	SIU	1985-86	1st	N/A

Home Stretch

Seeding for Hoops in the Heartland is up for grabs this week as the final games of the MVC regular season will be played on Friday and Saturday.

To date, the league has played 76 games of the Conference's 90-game regular-season schedule and is currently scheduled to play 86 of the 90.

The Bracket will be released following the conclusion of the regular season games on Saturday, March 6.

Elite NCAA Resume

Missouri State is once again putting together an elite NCAA Tournament resume. The Lady Bears are one of six teams with 11+ Top 100 NET wins (as of Feb. 28). Missouri State is 11-2 vs. the Top 100. Only Stanford, Louisville, South Carolina, Texas A&M, Georgia Tech and Missouri State have 11+ wins vs. the Top 100.

The Lady Bears are also one of only three teams with 6+ Top 100 road wins, joining Stanford and Texas A&M.

Missouri State has held every opponent to 73 points or less, including top 25 scoring offenses in Maryland (1st), FGCU (5th) and Drake (25th).

Rise of The Valley

The 2019-20 season tied the highest RPI ranking the MVC has recorded in its history showcasing how The Valley is becoming one of the best mid-major leagues in the country. The league also saw five teams in the Top 100 of the RPI for the first time since the 1998-99 season. In 2018-19, the league posted a top-15 RPI for the first time since 2012-13 a year after seeing the league's worst RPI in 2017-18 (24). The Valley is looking to match or surpass last year's record numbers in 2020-21.

Year	MVC RPI	Top 100 RPI Teams
2020-21	7 (NET)	5 (NET)
2019-20	8	5
2018-19	14	3
2017-18	24	2

Conference NET

The Valley ranks 7th nationally in the conference NET report. The Valley sits behind the SEC, ACC, Big 12, Pac-12, Big Ten and Big East entering this week.

NET Update

The latest installment of the NCAA NET Report (Mar. 1) has five Valley teams that rank in the top-90, including eight in the Top 155. Missouri State leads the way at No. 21 with Drake (46), Illinois State (63), UNI (76), and Bradley (87), rounding out the schools in the Top 90.

The Valley joins the ACC, Big 12, Big East, Big Ten, Pac-12 and SEC as the only leagues nationally with five teams in the NET Top 90.

The Valley joins only the Power Five leagues in having eight teams ranking in the Top 155.

BU: Dynamic Duo

Senior Gabi Haack and junior Lasha Petree continue to fill it up for the Braves with the pair combining for 34.1 points per game or roughly 49 percent of Bradley's scoring. Averaging a league-best 17.7 points per game, Petree is trying to become the first player not from Drake to lead the league in scoring since UNI's Jacqui Kalin in 2012-13 and join Shelli Braud (1987-88) as the only Bradley players to pace the Valley in scoring. Haack is second in the MVC in scoring in league games at 16.5 points per outing and became the first player in league history to hit 60 or more three-pointers in four different seasons last week. Since Bradley joined the MVC in 1983-84 the Braves have had only one other duo both average better than 15.0 points per game in the same season with Carrie Coffman (17.6 ppg) and Michelle Nason (16.6 ppg) doing so in 1994-95.

DU: Assist U

Drake recorded 27 assists – tied for their second-most of the year—on 30 field goals in the win over UNI. The Bulldogs, who led the nation in assists with 481 after the victory, have handed out 20 or more assists in 12 games this season.

UE: Climbing the Record Books

Less than 50 games into her career, Abby Feit is already moving up the record books. Feit's 66 blocks place her in eighth in Evansville program history in the statistical category.

ILS: Rivalry Sweep

ISU had five players score 11+ points en route to completing the season sweep of I-74 rival Bradley on Thursday, 79-59. It was the first time the Redbirds have swept the Braves in the regular season since the 2011-12 season. Both wins also came by double digits, marking the first time ISU has swept Bradley with a pair of double figure wins since the 2008-09 season.

INS: Double Double

Adrian Folks and Marie Hunter put up strong numbers on Wednesday evening to help propel Indiana State to a senior night victory over Evansville, 85-69. Both athletes put up double-doubles, including 23 points and 13 rebounds from Folks and 17 points and 10 rebounds from Hunter. Wednesday's performance marked Hunter's first career double-double and the first time two Sycamores recorded a double-double in the same game since Jamyra McChristine and LeAndra Echi accomplished the feat against CSUN on Nov. 30, 2019.

LUC: Plenty to Build On

Despite dropping both of its matchups with Missouri State, Loyola gave the No. 23/19 Lady Bears a pair of tests, keeping both games in doubt well into the fourth quarter on both nights. The Ramblers limited a vaunted Missouri State offense to an average of just 61.5 points across the two-game set, nearly a full nine points below its season average in scoring. In Saturday's series finale, the Maroon & Gold held the Lady Bears to just 59 points, tied for their second lowest total in a game this season.

MSU: Historic Defense

Missouri State is allowing 57.6 points per game this season, on pace for second-best defensive average in school history behind the 1973-74 team that yielded 45.9 points per contest. Only six times previously have the Lady Bears given up fewer than 60 points on average, most recently in the 2003-04 season.

UNI: New Valley Record

UNI made 21 three-pointers Sunday against Evansville for the best single-game total by any Missouri Valley Conference basketball team in league history (women's & men's). The Panthers were efficient in their record-setting performance by knocking down treys on a season-best 56.8% clip. Drake held the previous mark of 20 set on Feb. 9, 2018 at Evansville. UNI's 21 three-pointers are tied for the fourth-best single-game total in NCAA DI history and the most of any team in a game where it also held the opponent without any three-pointers.

SIU: Moving On Up

Makenzie Silvey averaged 17.5 points over the weekend to continue to move up SIU's all-time scoring list. She passed Dyana Pierre for seventh on Saturday and now sits just 15 points shy of passing Petra Jackson for sixth on Southern's all-time list. Silvey could become the first player in program history to amass at least 1,400 career points/400 rebounds/250 assists/200 three-pointers/150 steals in a career. The Glen Carbon, Ill. native needs seven boards and four steals to accomplish the feat.

VALPO: On A Roll

Valpo's series sweep at SIU - its first sweep in conference play this year - extended its winning streak to four consecutive games, its longest winning streak within conference play since joining the MVC. In fact, the last time Valpo won four straight conference games came to close out the 2006-07 regular season in its final season as a member of the Mid-Con. Valpo has also now won three consecutive road conference games, the first time since January 2007 it has won three straight road games in conference play.

Historic From Deep

Valpo finished 15-for-20 from 3-point range in Saturday's win at SIU. The 75% clip Valpo hit at from deep matches a program record. It previously hit 75% at Western Michigan on Dec. 19, 2012, but that mark was achieved on just 9-of-12 shooting. The 75% mark is the best this year by a DI women's team attempting at least 20 triples, bettering the 68.2% clip (15-for-22) Maryland hit at against Iowa just four days ago. Going back even further, a few other teams in the past decade have matched Valpo's 15-for-20 mark in a single game, but none have shot better on at least 20 attempts since Tennessee went 16-for-21 from downtown on March 6, 2011.

Climbing the Chart

Bradley senior Gabi Haack moved up to No. 5 in MVC history with 267 career triples after adding five to her total in Thursday's loss to Illinois State. Haack enters the week five away from moving into 4th on the all-time list.

MVC Career Three-Pointers

1. 294 - Dayna Finch, Creighton.....2001-04
2. 277 - Rishonda Napier, Southern Illinois.....2014-17
3. 276 - Brittany Schoen, Indiana State.....2008-12
4. 271 - Kari Koch, Missouri State.....2002-06
5. 267 - Gabi Haack, Bradley.....2017-present

1,000-Point Club

The Valley has seven active players in the 1,000-point club.

Current MVC Players in 1,000-Point Club

- 1,539 - Gabi Haack, Bradley
- 1,461 - Makenzie Silvey, Southern Illinois
- 1,340 - Karli Rucker, UNI
- 1,282 - Lasha Petree, Bradley
- 1,265 - Brice Calip, Missouri State
- 1,066 - Megan Maahs, UNI
- 1,057 - Abby Brockmeyer, Southern Illinois

Baranczyk Sets Drake Mark

Drake head coach Jennie Baranczyk surpassed Lisa Bluder for the most Valley wins in Drake history with a 75-46 win at Loyola. She passed UNI's Tony DiCecco and into sixth place on The Valley chart with a 68-64 win over the Ramblers.

MOST COACHING WINS (MVC GAMES)

Name, School (Years)	No.
Cheryl Burnett, Missouri State (1988-02)	201
Cindy Scott, Southern Illinois (1983-98)	199
Jill Hutchison, Illinois State (1983-99)	170
Tanya Warren, UNI (2008-present)	162
Jim Flanery, Creighton (2003-13)	131
Jennie Baranczyk, Drake (2013-present)	121
Tony DiCecco, UNI (1996-07)	117
Lisa Bluder, Drake (1991-00)	116

Warren Joins Elite Club

Tanya Warren claimed her 250th career win as UNI's head coach with a win over Indiana State. Warren became the fourth coach in conference women's basketball history to join the league's official 250-Win Club.

Coach, School, Years	Wins
Cindy Scott, Southern Illinois (1983-98)	353
Cheryl Burnett, Missouri State (1988-02)	319
Jill Hutchison, Illinois State (1983-99)	277
Tanya Warren, UNI (2008-present)	255

Top Five Finishes

UNI is the only Valley team to have finished in the top-five of the league standings for the past 11 seasons. Below is a list of top-five finishes over the last 11 seasons.

UNI will finish .500 or better for a 13th season in a row to extend the best active streak by any MVC basketball program (women's & men's).

Top-Five MVC Finishes, Last 10 Seasons

- UNI - 11 (10, 11, 12, 13, 14, 15, 16, 17, 18, 19, 20)
- MSU - 9 (10, 11, 12, 15, 16, 17, 18, 19, 20)
- Drake - 8 (12, 14, 15, 16, 17, 18, 19, 20)
- Illinois State - 6 (10, 11, 12, 13, 19, 20)
- Southern Illinois - 4 (15, 16, 17, 18)
- Bradley - 3 (10, 19, 20)
- Indiana State - 3 (13, 14, 18)
- Loyola - 1 (16)
- Evansville - 1 (14)

Power Five Wins

The MVC secured five wins over Power Five programs during the shortened non-conference schedule. The Valley registered a 5-9 vs. Power Five teams after going 9-12 in 2019-20. The Valley went 4-4 vs. the Big Ten, 1-1 vs. the SEC, 0-3 vs. the Big 12 and 0-1 vs. the ACC. Missouri State and Valpo each had two wins, while Drake had the other.

Polling

Missouri State remained No. 23 in this week's AP Top 25 Poll. MSU moved up to No. 19 in the USA Today Coaches Top 25 poll (Feb. 23), marking its 31st-straight appearance in the poll.

Top 25 Success

The Valley finished non-conference play 2-2 vs. AP Top 25 Teams this season, with Missouri State beating #12 Maryland in the season opener and UNI besting #22 South Dakota State.

The last time The Valley had a pair of AP Top 25 wins during the non-conference portion of the season was back in 2002 when Drake beat No. 18 Iowa State and UNI beat No. 24 Iowa State.

Postseason League

The MVC has seen an average of four league teams participate in postseason play in the last 21 seasons where postseason action took place, including three teams reaching postseason play in 2018-19. Before the 2019-20 season was cut short due to COVID-19, the MVC was in position to send 5 or 6 teams to postseason play. The Valley has earned multiple NCAA Tournament bids in 12 different seasons, including two out of the last three seasons (not counting 2019-20).

Streaks in League Play

Missouri State ran its win streak vs. Loyola to 16-straight over the weekend, establishing the longest active streak in the MVC. The Ramblers last win over the Lady Bears was on Jan. 12, 2014 (63-61).

UNI stretched its streak vs. Evansville to 15-straight with a pair of wins over the weekend. The Aces last win vs. UNI was on Jan. 8, 2014 (59-50)

Below is a look at the longest winning streaks against an MVC opponent:

Longest Winning Streaks vs. MVC Opponent

- 27 - Southern Illinois over Bradley (1983-95)
- 25 - Missouri State over UNI (1989-00)
- 21 - Illinois State over UNI (1984-94)*
- 20 - UNI over Wichita State (2000-09)
- 20 - Drake over Southern Illinois (1997-05)
- 19 - Drake over Bradley (1996-04)
- 19 - Missouri State over Southern Illinois (1997-06)
- 19 - Missouri State over Wichita State (1988-97)
- 17 - Drake over UNI (1987-95)
- 17 - Southern Illinois over UNI (1984-92)
- 16 - UNI over Bradley (2012-20)
- 16 - Missouri State over Bradley (1992-97)
- 16 - Missouri State over Loyola (2014-present)
- 15 - Illinois State over Bradley (2006-13)
- 15 - Drake over Illinois State (2014-21)
- 15 - Drake over Loyola (2014-present)
- 15 - UNI over Evansville (2015-present)

*ILS won 22-straight in the series

Longest Current Winning Streaks vs. MVC Opponent

- 16 - Missouri State over Loyola (2014-present)
- 15 - Drake over Loyola (2014-present)
- 15 - UNI over Evansville (2015-present)
- 14 - Missouri State over Indiana State (2015-present)

Hoops in the Heartland

The Missouri Valley Conference will conduct its 14th neutral site postseason women's basketball tournament when the event takes the hardwood at TaxSlayer Center in the Quad Cities, on Thursday-Sunday, March 11-14, 2021. The MVC Tournament, also known uniquely as "Hoops in the Heartland" to Valley fans, will be played at TaxSlayer Center in the Quad Cities for the sixth-straight year, despite last year's event being cancelled due to COVID-19.

All nine games of the 2021 MVC Women's Basketball Tournament will be available live on ESPN+ via the ESPN app. Launched in April 2018, ESPN+ has grown to more than 10.3 million subscribers. Fans subscribe to ESPN+ for just \$5.99 a month (or \$49.99 per year) at ESPN.com, ESPNplus.com or on the ESPN App (mobile and connected devices).



2020-21 Missouri Valley Conference
CONFERENCE BASKETBALL STATISTICS
Through games of Feb 28, 2021 (All games)



SCORING OFFENSE	G	W-L	Pts	Avg/G
1. Drake	23	13-10	1779	77.3
2. Northern Iowa	23	12-11	1645	71.5
3. Illinois State	18	13-6	1262	70.1
4. Bradley	23	12-11	1612	70.1
5. Missouri State	20	18-2	1388	69.4
6. Valparaiso	21	11-10	1350	64.3
7. Indiana State	17	5-12	1052	61.9
8. Southern Illinois	21	8-13	1259	60.0
9. Loyola	20	10-10	1180	59.0
10. Evansville	20	6-15	1107	55.3

SCORING DEFENSE	G	Pts	Avg/G
1. Missouri State	20	1151	57.5
2. Loyola	20	1178	58.9
3. Illinois State	18	1077	59.8
4. Southern Illinois	21	1323	63.0
5. Valparaiso	21	1350	64.3
6. Bradley	23	1518	66.0
7. Northern Iowa	23	1560	67.8
8. Drake	23	1573	68.4
9. Evansville	20	1395	69.8
10. Indiana State	17	1259	74.1

SCORING MARGIN	G	Offense	Defense	Margin
1. Missouri State	20	69.4	57.5	+11.9
2. Illinois State	18	70.1	59.8	+10.3
3. Drake	23	77.3	68.4	+9.0
4. Bradley	23	70.1	66.0	+4.1
5. Northern Iowa	23	71.5	67.8	+3.7
6. Loyola	20	59.0	58.9	+0.1
7. Valparaiso	21	64.3	64.3	+0.0
8. Southern Illinois	21	60.0	63.0	-3.0
9. Indiana State	17	61.9	74.1	-12.2
10. Evansville	20	55.3	69.8	-14.4

FREE THROW PCT	G	FTM	FTA	Pct.
1. Northern Iowa	23	325	428	.759
2. Drake	23	260	353	.737
3. Bradley	23	270	372	.726
4. Loyola	20	220	305	.721
5. Missouri State	20	241	341	.707
6. Valparaiso	21	253	359	.705
7. Illinois State	18	260	369	.705
8. Evansville	20	264	396	.667
9. Indiana State	17	190	288	.660
10. Southern Illinois	21	182	284	.641

FIELD GOAL PERCENTAGE	G	FGM	FGA	Pct.
1. Drake	23	662	1377	.481
2. Illinois State	18	440	992	.444
3. Bradley	23	586	1393	.421
4. Missouri State	20	522	1252	.417
5. Northern Iowa	23	557	1367	.407
6. Southern Illinois	21	473	1183	.400
7. Loyola	20	432	1091	.396
8. Valparaiso	21	454	1160	.391
9. Indiana State	17	388	1032	.376
10. Evansville	20	379	1036	.366

FIELD GOAL PCT DEFENSE	G	FGM	FGA	Pct.
1. Illinois State	18	377	1014	.372
2. Missouri State	20	407	1071	.380
3. Evansville	20	498	1299	.383
4. Bradley	23	520	1352	.385
5. Loyola	20	434	1113	.390
6. Valparaiso	21	473	1202	.394
7. Drake	23	576	1450	.397
8. Northern Iowa	23	576	1394	.413
9. Southern Illinois	21	483	1060	.456
10. Indiana State	17	451	981	.460

3-POINT FG PCT	G	3FGM	3FGA	Pct.
1. Drake	23	195	518	.376
2. Illinois State	18	122	325	.375
3. Bradley	23	170	502	.339
4. Northern Iowa	23	206	619	.333
5. Valparaiso	21	189	596	.317
6. Missouri State	20	103	336	.307
7. Southern Illinois	21	131	435	.301
8. Loyola	20	96	322	.298
9. Indiana State	17	86	304	.283
10. Evansville	20	85	312	.272

3-POINT FG PCT DEFENSE	G	3FGM	3FGA	Pct.
1. Loyola	20	110	410	.268
2. Valparaiso	21	108	382	.283
3. Missouri State	20	110	385	.286
4. Illinois State	18	114	382	.298
5. Evansville	20	194	635	.306
6. Drake	23	163	518	.315
7. Northern Iowa	23	111	351	.316
8. Bradley	23	172	514	.335
9. Indiana State	17	125	354	.353
10. Southern Illinois	21	115	321	.358

REBOUNDING OFFENSE	G	Rebounds	Avg/G
1. Missouri State	20	822	41.1
2. Drake	23	898	39.0
3. Bradley	23	891	38.7
4. Northern Iowa	23	850	37.0
5. Indiana State	17	625	36.8
6. Illinois State	18	655	36.4
7. Evansville	20	721	36.0
8. Loyola	20	721	36.0
9. Southern Illinois	21	718	34.2
10. Valparaiso	21	667	31.8

REBOUNDING DEFENSE	G	Rebounds	Avg/G
1. Missouri State	20	634	31.7
2. Southern Illinois	21	674	32.1
3. Illinois State	18	601	33.4
4. Drake	23	783	34.0
5. Loyola	20	697	34.8
6. Bradley	23	849	36.9
7. Northern Iowa	23	857	37.3
8. Indiana State	17	638	37.5
9. Valparaiso	21	858	40.9
10. Evansville	20	827	41.3



2020-21 Missouri Valley Conference
CONFERENCE BASKETBALL STATISTICS
Through games of Feb 28, 2021 (All games)



REBOUNDING MARGIN	G	Team	Avg.	Opp.	Avg.	Margin
1. Missouri State	20	822	41.1	634	31.7	+9.4
2. Drake	23	898	39.0	783	34.0	+5.0
3. Illinois State	18	655	36.4	601	33.4	+3.0
4. Southern Illinois	21	718	34.2	674	32.1	+2.1
5. Bradley	23	891	38.7	849	36.9	+1.8
6. Loyola	20	721	36.0	697	34.8	+1.2
7. Northern Iowa	23	850	37.0	857	37.3	-0.3
8. Indiana State	17	625	36.8	638	37.5	-0.8
9. Evansville	20	721	36.0	827	41.3	-5.3
10. Valparaiso	21	667	31.8	858	40.9	-9.1

ASSISTS	G	No.	Avg/G
1. Drake	23	481	20.9
2. Missouri State	20	308	15.4
3. Northern Iowa	23	341	14.8
4. Southern Illinois	21	301	14.3
5. Bradley	23	319	13.9
6. Indiana State	17	212	12.5
7. Valparaiso	21	260	12.4
8. Loyola	20	227	11.4
9. Illinois State	18	200	11.1
10. Evansville	20	205	10.3

TURNOVER MARGIN	G	Team	Avg.	Opp.	Avg.	Margin
1. Missouri State	20	265	13.3	335	16.8	+3.5
2. Valparaiso	21	322	15.3	374	17.8	+2.5
3. Illinois State	18	272	15.1	298	16.6	+1.4
4. Bradley	23	299	13.0	316	13.7	+0.7
5. Northern Iowa	23	358	15.6	371	16.1	+0.6
6. Southern Illinois	21	295	14.0	300	14.3	+0.2
7. Indiana State	17	261	15.4	253	14.9	-0.5
8. Loyola	20	314	15.7	295	14.8	-0.9
9. Drake	23	424	18.4	357	15.5	-2.9
10. Evansville	20	393	19.7	282	14.1	-5.6

OFFENSIVE REBOUNDS	G	No.	Avg/G
1. Missouri State	20	275	13.8
2. Indiana State	17	219	12.9
3. Southern Illinois	21	252	12.0
4. Bradley	23	253	11.0
5. Northern Iowa	23	251	10.9
6. Drake	23	243	10.6
7. Loyola	20	205	10.3
8. Evansville	20	167	8.4
9. Illinois State	18	143	7.9
10. Valparaiso	21	149	7.1

DEFENSIVE REB PCT.	G	D-Reb	Opp. OR	D-Reb%
1. Missouri State	20	547	144	.792
2. Illinois State	18	512	155	.768
3. Southern Illinois	21	466	163	.741
4. Loyola	20	516	202	.719
5. Bradley	23	638	251	.718
6. Drake	23	655	270	.708
7. Indiana State	17	406	172	.702
8. Northern Iowa	23	599	262	.696
9. Valparaiso	21	518	259	.667
10. Evansville	20	554	278	.666

BLOCKED SHOTS	G	No.	Avg/G
1. Bradley	23	114	5.0
2. Drake	23	98	4.3
3. Missouri State	20	81	4.1
4. Northern Iowa	23	87	3.8
5. Valparaiso	21	68	3.2
6. Illinois State	18	58	3.2
7. Loyola	20	60	3.0
8. Evansville	20	57	2.9
9. Indiana State	17	41	2.4
10. Southern Illinois	21	37	1.8

STEALS	G	No.	Avg/G
1. Missouri State	20	197	9.9
2. Valparaiso	21	191	9.1
3. Indiana State	17	140	8.2
4. Drake	23	187	8.1
5. Illinois State	18	142	7.9
6. Northern Iowa	23	175	7.6
7. Southern Illinois	21	153	7.3
8. Evansville	20	136	6.8
9. Loyola	20	135	6.8
10. Bradley	23	153	6.7

ASSIST/TURNOVER RATIO	G	Ast.	Avg.	T/O	Avg.	Ratio
1. Missouri State	20	308	15.4	265	13.3	1.2
2. Drake	23	481	20.9	424	18.4	1.1
3. Bradley	23	319	13.9	299	13.0	1.1
4. Southern Illinois	21	301	14.3	295	14.0	1.0
5. Northern Iowa	23	341	14.8	358	15.6	1.0
6. Indiana State	17	212	12.5	261	15.4	0.8
7. Valparaiso	21	260	12.4	322	15.3	0.8
8. Illinois State	18	200	11.1	272	15.1	0.7
9. Loyola	20	227	11.4	314	15.7	0.7
10. Evansville	20	205	10.3	393	19.7	0.5

DEFENSIVE REBOUNDS	G	No.	Avg/G
1. Drake	23	655	28.5
2. Illinois State	18	512	28.4
3. Bradley	23	638	27.7
4. Evansville	20	554	27.7
5. Missouri State	20	547	27.4
6. Northern Iowa	23	599	26.0
7. Loyola	20	516	25.8
8. Valparaiso	21	518	24.7
9. Indiana State	17	406	23.9
10. Southern Illinois	21	466	22.2

OFFENSIVE REB PCT.	G	O-Reb	Opp. DR	O-Reb%
1. Missouri State	20	275	490	.359
2. Southern Illinois	21	252	511	.330
3. Drake	23	243	513	.321
4. Indiana State	17	219	466	.320
5. Bradley	23	253	598	.297
6. Northern Iowa	23	251	595	.297
7. Loyola	20	205	495	.293
8. Illinois State	18	143	446	.243
9. Evansville	20	167	549	.233
10. Valparaiso	21	149	599	.199



2020-21 Missouri Valley Conference
CONFERENCE BASKETBALL STATISTICS
Through games of Feb 28, 2021 (All games)



3-POINT FG MADE	G	No.	Avg/G
1. Valparaiso	21	189	9.0
2. Northern Iowa	23	206	9.0
3. Drake	23	195	8.5
4. Bradley	23	170	7.4
5. Illinois State	18	122	6.8
6. Southern Illinois	21	131	6.2
7. Missouri State	20	103	5.2
8. Indiana State	17	86	5.1
9. Loyola	20	96	4.8
10. Evansville	20	85	4.3



2020-21 Missouri Valley Conference
CONFERENCE BASKETBALL STATISTICS
Through games of Feb 28, 2021 (All games)



Team	Conference	Pct.	PF	PA	Overall	Pct.	PF	PA	Current unbeaten streak
Missouri State	14-0	1.000	67.9	57.6	18-2	.900	69.4	57.5	Missouri State -- 14
Drake	11-5	.688	76.7	62.5	13-10	.565	77.3	68.4	Valparaiso -- 4
Illinois State	10-6	.625	63.1	58.2	13-6	.684	70.1	59.8	Illinois State -- 3
Northern Iowa	9-7	.562	72.4	65.4	12-11	.522	71.5	67.8	Northern Iowa -- 2
Valparaiso	7-7	.500	63.0	63.1	11-10	.524	64.3	64.3	Drake -- 1
Bradley	8-8	.500	68.6	65.3	12-11	.522	70.1	66.0	Indiana State -- 1
Loyola	8-8	.500	56.2	56.9	10-10	.500	59.0	58.9	
Southern Illinois	5-11	.312	59.1	62.9	8-13	.381	60.0	63.0	
Indiana State	2-10	.167	57.7	75.8	5-12	.294	61.9	74.1	
Evansville	2-14	.125	47.1	67.3	6-15	.286	55.3	69.8	

TEAM SUMMARIES	G	PF-PA	Avg score	Margin	FG-FGA	Pct.	3FG-FGA	Pct.	FT-FTA	Pct.	RebF	RebA	Margin
Bradley	23	1612-1518	70.1-66.0	+4.1	586-1393	.421	170-502	.339	270-372	.726	891	849	+1.8
Drake	23	1779-1573	77.3-68.4	+9.0	662-1377	.481	195-518	.376	260-353	.737	898	783	+5.0
Evansville	20	1107-1395	55.3-69.8	-14.4	379-1036	.366	85-312	.272	264-396	.667	721	827	-5.3
Illinois State	18	1262-1077	70.1-59.8	+10.3	440-992	.444	122-325	.375	260-369	.705	655	601	+3.0
Indiana State	17	1052-1259	61.9-74.1	-12.2	388-1032	.376	86-304	.283	190-288	.660	625	638	-0.8
Loyola	20	1180-1178	59.0-58.9	+0.1	432-1091	.396	96-322	.298	220-305	.721	721	697	+1.2
Missouri State	20	1388-1151	69.4-57.5	+11.9	522-1252	.417	103-336	.307	241-341	.707	822	634	+9.4
Northern Iowa	23	1645-1560	71.5-67.8	+3.7	557-1367	.407	206-619	.333	325-428	.759	850	857	-0.3
Southern Illinois	21	1259-1323	60.0-63.0	-3.0	473-1183	.400	131-435	.301	182-284	.641	718	674	+2.1
Valparaiso	21	1350-1350	64.3-64.3	+0.0	454-1160	.391	189-596	.317	253-359	.705	667	858	-9.1

ATTENDANCE	Home	Average	Away	Average	Neutral	Average	Total	Average
Bradley	12-0	0	11-3514	319	0-0	0	23-3514	153
Drake	8-2119	265	15-6090	406	0-0	0	23-8209	357
Evansville	11-0	0	9-1421	158	0-0	0	20-1421	71
Illinois State	10-0	0	8-1170	146	0-0	0	18-1170	65
Indiana State	9-690	77	8-906	113	0-0	0	17-1596	94
Loyola	9-0	0	11-3597	327	0-0	0	20-3597	180
Missouri State	9-11915	1324	9-2899	322	2-0	0	20-14814	741
Northern Iowa	12-4833	403	11-1306	119	0-0	0	23-6139	267
Southern Illinois	11-50	5	10-3432	343	0-0	0	21-3482	166
Valparaiso	11-847	77	10-468	47	0-0	0	21-1315	63
Totals	102-20454	201	102-24803	243	2-0	0	206-45257	220



2020-21 Missouri Valley Conference
INDIVIDUAL BASKETBALL STATISTICS
Through games of Feb 28, 2021 (All games)



To be ranked, a player must appear in at least 75.0% of their team's games.

SCORING								REBOUNDING							
	Cl	G	FG	3FG	FT	Pts	Avg/G		Cl	G	Off	Def	Total	Avg/G	
1. Petree, Lasha-BRAD	Jr	23	140	44	83	407	17.7	1. Franklin,Jasmine-MSU	Jr	20	56	137	193	9.7	
2. Berg,Grace-DU	So	23	150	15	68	383	16.7	2. Feit, Abby-UE	So	20	21	139	160	8.0	
3. Haack, Gabi-BRAD	Sr	23	123	61	71	378	16.4	3. McChristine,Jamyra-INS	Sr	17	60	59	119	7.0	
4. Feit, Abby-UE	So	20	101	24	69	295	14.8	4. Haack, Gabi-BRAD	Sr	23	39	116	155	6.7	
5. Silvey, Makenzie-SIU	Sr	19	113	33	17	276	14.5	5. Day, Allison-LUC	Jr	20	44	84	128	6.4	
6. Frederick, Shay-Valpo	Jr	21	89	44	75	297	14.1	6. Redmond, Juliunn-ILS	Sr	18	20	94	114	6.3	
7. Redmond, Juliunn-ILS	Sr	18	93	19	47	252	14.0	7. Folks,Adrian-INS	So	17	38	69	107	6.3	
8. Weinman, Carie-Valpo	Jr	21	105	38	41	289	13.8	8. White, Grace-Valpo	Sr	18	30	83	113	6.3	
9. RUCKER, Karli-UNI	Sr	23	116	32	49	313	13.6	9. Bair,Maggie-DU	So	18	21	89	110	6.1	
10. Calip,Brice-MSU	Sr	20	84	20	83	271	13.6	10. GUNNELS, Bre-UNI	Sr	23	39	100	139	6.0	
11. Collier,Kierra-DU	Jr	19	87	31	25	230	12.1	11. Burich,Monica-DU	Sr	23	39	99	138	6.0	
12. Monahan,Maddie-DU	Sr	20	83	34	39	239	12.0	12. Wilson, DeAnna-ILS	So	17	28	71	99	5.8	
13. Franklin,Jasmine-MSU	Jr	20	91	0	55	237	11.9	13. White, Nyjah-BRAD	Sr	22	30	85	115	5.2	
14. Crompton,Mary-ILS	So	18	68	48	28	212	11.8	14. Thurwalker, Sydney-UE	So	18	30	61	91	5.1	
15. White, Grace-Valpo	Sr	18	69	18	51	207	11.5	15. Wooldridge,Allie-DU	Jr	23	26	89	115	5.0	
16. Day, Allison-LUC	Jr	20	85	4	47	221	11.1	Marsh, Emily-BRAD	Sr	19	25	70	95	5.0	
17. Moore,Terrion-ILS	Jr	18	71	21	35	198	11.0	17. Rice, Ellie-LUC	Sr	20	14	85	99	5.0	
18. White, Nyjah-BRAD	Sr	22	102	0	35	239	10.9	18. Hipp,Abby-MSU	Sr	19	44	50	94	4.9	
19. Folks,Adrian-INS	So	17	71	1	32	175	10.3	19. Berg,Grace-DU	So	23	35	78	113	4.9	
20. Rice, Ellie-LUC	Sr	20	76	27	24	203	10.2	20. Wolf, Cynthia-UNI	Jr	23	38	74	112	4.9	
21. Anderson,Caitlin-INS	So	16	56	0	47	159	9.9								
22. Hipp,Abby-MSU	Sr	19	82	3	19	186	9.8								
23. Walker, Gabby-SIU	Sr	20	73	0	48	194	9.7								
24. McChristine,Jamyra-INS	Sr	17	65	0	31	161	9.5								
25. McCallister, Payton-SIU	Jr	21	64	38	23	189	9.0								
26. Morrison, Caitlin-Valpo	Sr	21	69	32	17	187	8.9								
27. Griffin, A'Niah-UE	Jr	16	51	10	28	140	8.8								
28. FINLEY, Kam-UNI	Jr	22	65	31	29	190	8.6								
29. Ruffridge,Elle-MSU	Sr	20	62	32	13	169	8.5								
30. Hunter,Marie-INS	Sr	14	46	9	16	117	8.4								

FIELD GOAL PCT						ASSISTS			
	Cl	G	FGM	FGA	Pct.		Cl	G	No. Avg/G
1. Berg,Grace-DU	So	23	150	277	.542	1. Frederick, Shay-Valpo	Jr	21	98 4.7
2. Day, Allison-LUC	Jr	20	85	157	.541	2. Calip,Brice-MSU	Sr	20	86 4.3
3. Burich,Monica-DU	Sr	23	71	137	.518	3. Collier,Kierra-DU	Jr	19	79 4.2
4. Walker, Gabby-SIU	Sr	20	73	144	.507	4. RUCKER, Karli-UNI	Sr	23	95 4.1
5. Hipp,Abby-MSU	Sr	19	82	162	.506	5. Monahan,Maddie-DU	Sr	20	82 4.1
6. Franklin,Jasmine-MSU	Jr	20	91	182	.500	6. Newman, Anna-UE	Jr	17	63 3.7
7. Monahan,Maddie-DU	Sr	20	83	168	.494	7. White, Nyjah-BRAD	Sr	22	76 3.5
8. Haack, Gabi-BRAD	Sr	23	123	255	.482	8. Wooldridge,Allie-DU	Jr	23	69 3.0
9. Moore,Terrion-ILS	Jr	18	71	154	.461	White, Grace-Valpo	Sr	18	54 3.0
Folks,Adrian-INS	So	17	71	154	.461	10. Saylor,Paige-ILS	Sr	18	53 2.9
11. McChristine,Jamyra-INS	Sr	17	65	142	.458	11. Koenig, Tatum-BRAD	Jr	23	66 2.9
12. Redmond, Juliunn-ILS	Sr	18	93	205	.454	12. Silvey, Makenzie-SIU	Sr	19	54 2.8
13. Anderson,Caitlin-INS	So	16	56	124	.452	13. Redmond, Juliunn-ILS	Sr	18	48 2.7
14. Weinman, Carie-Valpo	Jr	21	105	237	.443	14. Galanopoulos, Sam-LUC	So	20	52 2.6
15. Collier,Kierra-DU	Jr	19	87	198	.439	15. Hunter,Marie-INS	Sr	14	36 2.6



2020-21 Missouri Valley Conference
INDIVIDUAL BASKETBALL STATISTICS
Through games of Feb 28, 2021 (All games)



FREE THROW PCT	Cl	G	FTM	FTA	Pct.
1. Berg, Grace-DU	So	23	68	81	.840
2. Calip, Brice-MSU	Sr	20	83	99	.838
3. MAAHS, Megan-UNI	Sr	23	57	68	.838
4. Petree, Lasha-BRAD	Jr	23	83	100	.830
5. Wong, Maya-ILS	Fr	17	34	42	.810
6. RUCKER, Karli-UNI	Sr	23	49	61	.803
7. Day, Allison-LUC	Jr	20	47	59	.797
8. GUNNELS, Bre-UNI	Sr	23	76	96	.792
9. Haack, Gabi-BRAD	Sr	23	71	90	.789
10. Redmond, Juliunn-ILS	Sr	18	47	60	.783
11. Newman, Anna-UE	Jr	17	51	66	.773
12. White, Grace-Valpo	Sr	18	51	67	.761
13. Frederick, Shay-Valpo	Jr	21	75	99	.758
14. Feit, Abby-UE	So	20	69	92	.750
15. Anderson, Caitlin-INS	So	16	47	65	.723

3-POINT FG PCT	Cl	G	3FG	FGA	Pct.
1. Crompton, Mary-ILS	So	18	48	104	.462
2. Gueldner, Sarah Beth-DU	So	23	42	96	.438
3. Monahan, Maddie-DU	Sr	20	34	84	.405
4. Frederick, Shay-Valpo	Jr	21	44	109	.404
5. Haack, Gabi-BRAD	Sr	23	61	152	.401
6. LAUBE, Kayba-UNI	Fr	18	26	66	.394
7. Collier, Kierra-DU	Jr	19	31	79	.392
8. Weinman, Carie-Valpo	Jr	21	38	100	.380
9. Koenig, Tatum-BRAD	Jr	23	33	88	.375
10. KROEGER, Nicole-UNI	Sr	23	31	84	.369
11. Moore, Terrion-ILS	Jr	18	21	58	.362
12. Brown, Anna-LUC	So	20	23	64	.359
13. Latu, Essy-INS	Jr	14	24	67	.358
14. RUCKER, Karli-UNI	Sr	23	32	90	.356
15. Redmond, Juliunn-ILS	Sr	18	19	56	.339

BLOCKED SHOTS	Cl	G	No.	Avg/G
1. Petree, Lasha-BRAD	Jr	23	51	2.2
2. Bair, Maggie-DU	So	18	32	1.8
3. Tanin, Sitori-LUC	Fr	20	24	1.2
Feit, Abby-UE	So	20	24	1.2
5. Morrison, Caitlin-Valpo	Sr	21	23	1.1
6. Jackson, Abigayle-MSU	Sr	20	20	1.0
7. Franklin, Jasmine-MSU	Jr	20	19	1.0
8. White, Grace-Valpo	Sr	18	17	0.9
9. Bullman, Kate-ILS	Fr	18	16	0.9
10. Wolf, Cynthia-UNI	Jr	23	20	0.9
GUNNELS, Bre-UNI	Sr	23	20	0.9
12. Marsh, Emily-BRAD	Sr	19	16	0.8
13. Poland, Jada-UE	Sr	20	15	0.8
14. Burich, Monica-DU	Sr	23	17	0.7
15. McChristine, Jamyra-INS	Sr	17	12	0.7

STEALS	Cl	G	No.	Avg/G
1. Weinman, Carie-Valpo	Jr	21	56	2.7
2. Franklin, Jasmine-MSU	Jr	20	48	2.4
3. Calip, Brice-MSU	Sr	20	47	2.4
4. Moore, Terrion-ILS	Jr	18	35	1.9
5. White, Grace-Valpo	Sr	18	34	1.9
6. Anderson, Caitlin-INS	So	16	27	1.7
7. McChristine, Jamyra-INS	Sr	17	27	1.6
8. McCallister, Payton-SIU	Jr	21	33	1.6
9. Feit, Abby-UE	So	20	31	1.6
10. Berg, Grace-DU	So	23	33	1.4
Petree, Lasha-BRAD	Jr	23	33	1.4
12. Redmond, Juliunn-ILS	Sr	18	25	1.4
13. FINLEY, Kam-UNI	Jr	22	30	1.4
White, Nyjah-BRAD	Sr	22	30	1.4
15. Frederick, Shay-Valpo	Jr	21	28	1.3

3-POINT FG MADE	Cl	G	3FG	Avg/G
1. Crompton, Mary-ILS	So	18	48	2.7
2. Haack, Gabi-BRAD	Sr	23	61	2.7
3. Frederick, Shay-Valpo	Jr	21	44	2.1
4. Petree, Lasha-BRAD	Jr	23	44	1.9
5. Gueldner, Sarah Beth-DU	So	23	42	1.8
6. Weinman, Carie-Valpo	Jr	21	38	1.8
McCallister, Payton-SIU	Jr	21	38	1.8
8. Silvey, Makenzie-SIU	Sr	19	33	1.7
9. Latu, Essy-INS	Jr	14	24	1.7
10. Monahan, Maddie-DU	Sr	20	34	1.7
11. Collier, Kierra-DU	Jr	19	31	1.6
12. Ruffridge, Elle-MSU	Sr	20	32	1.6
13. Morrison, Caitlin-Valpo	Sr	21	32	1.5
14. LAUBE, Kayba-UNI	Fr	18	26	1.4
15. Koenig, Tatum-BRAD	Jr	23	33	1.4

ASSIST/TURNOVER RATIO	Cl	G	Ast.	T/O	Ratio
1. Calip, Brice-MSU	Sr	20	86	30	2.9
2. Monahan, Maddie-DU	Sr	20	82	45	1.8
3. RUCKER, Karli-UNI	Sr	23	95	65	1.5
4. Frederick, Shay-Valpo	Jr	21	98	73	1.3
5. White, Nyjah-BRAD	Sr	22	76	59	1.3
6. Wooldridge, Allie-DU	Jr	23	69	55	1.3
7. Collier, Kierra-DU	Jr	19	79	63	1.3
8. Newman, Anna-UE	Jr	17	63	57	1.1
9. White, Grace-Valpo	Sr	18	54	58	0.9



2020-21 Missouri Valley Conference
INDIVIDUAL BASKETBALL STATISTICS
Through games of Feb 28, 2021 (All games)



OFFENSIVE REBOUNDS	Cl	G	No.	Avg/G
1. McChristine, Jamyra-INS	Sr	17	60	3.5
2. Franklin, Jasmine-MSU	Jr	20	56	2.8
3. Hipp, Abby-MSU	Sr	19	44	2.3
4. Folks, Adrian-INS	So	17	38	2.2
5. Day, Allison-LUC	Jr	20	44	2.2
Walker, Gabby-SIU	Sr	20	44	2.2
7. Wilson, Sydney-MSU	Jr	20	42	2.1
8. GUNNELS, Bre-UNI	Sr	23	39	1.7
Burich, Monica-DU	Sr	23	39	1.7
Haack, Gabi-BRAD	Sr	23	39	1.7
11. White, Grace-Valpo	Sr	18	30	1.7
Thurwalker, Sydney-UE	So	18	30	1.7
13. Wolf, Cynthia-UNI	Jr	23	38	1.7
14. Wilson, DeAnna-ILS	So	17	28	1.6
15. Tanin, Sitori-LUC	Fr	20	32	1.6

DEFENSIVE REBOUNDS	Cl	G	No.	Avg/G
1. Feit, Abby-UE	So	20	139	7.0
2. Franklin, Jasmine-MSU	Jr	20	137	6.9
3. Redmond, Juliunn-ILS	Sr	18	94	5.2
4. Haack, Gabi-BRAD	Sr	23	116	5.0
5. Bair, Maggie-DU	So	18	89	4.9
6. White, Grace-Valpo	Sr	18	83	4.6
7. GUNNELS, Bre-UNI	Sr	23	100	4.3
8. Burich, Monica-DU	Sr	23	99	4.3
9. Rice, Ellie-LUC	Sr	20	85	4.3
10. Day, Allison-LUC	Jr	20	84	4.2
11. Wilson, DeAnna-ILS	So	17	71	4.2
12. Folks, Adrian-INS	So	17	69	4.1
13. Wooldridge, Allie-DU	Jr	23	89	3.9
14. White, Nyjah-BRAD	Sr	22	85	3.9
15. Moore, Terrion-ILS	Jr	18	68	3.8

MINUTES PLAYED	Cl	G	No.	Avg/G
1. Frederick, Shay-Valpo	Jr	21	745	35.5
2. Feit, Abby-UE	So	20	691	34.5
3. Haack, Gabi-BRAD	Sr	23	785	34.1
4. Weinman, Carrie-Valpo	Jr	21	705	33.6
5. Silvey, Makenzie-SIU	Sr	19	631	33.2
6. Koenig, Tatum-BRAD	Jr	23	760	33.0
7. McCallister, Payton-SIU	Jr	21	682	32.5
8. Rice, Ellie-LUC	Sr	20	649	32.5
9. White, Grace-Valpo	Sr	18	577	32.1
10. Calip, Brice-MSU	Sr	20	637	31.9
11. Newman, Anna-UE	Jr	17	538	31.6
12. Saylor, Paige-ILS	Sr	18	565	31.4
13. Petree, Lasha-BRAD	Jr	23	718	31.2
14. Crompton, Mary-ILS	So	18	558	31.0
15. Redmond, Juliunn-ILS	Sr	18	556	30.9
16. Wilson, Sydney-MSU	Jr	20	600	30.0
17. RUCKER, Karli-UNI	Sr	23	676	29.4
18. Moore, Terrion-ILS	Jr	18	517	28.7
19. Galanopoulos, Sam-LUC	So	20	574	28.7
20. Link, Caitlin-SIU	Jr	21	595	28.3
21. Folks, Adrian-INS	So	17	476	28.0
22. Berg, Grace-DU	So	23	637	27.7
23. Pitzer, Sommer-INS	So	15	411	27.4
24. Day, Allison-LUC	Jr	20	544	27.2
25. White, Nyjah-BRAD	Sr	22	594	27.0
26. Monahan, Maddie-DU	Sr	20	537	26.9
27. Poland, Jada-UE	Sr	20	532	26.6
28. Collier, Kierra-DU	Jr	19	494	26.0
29. Chandler, Maya-LUC	Fr	20	518	25.9
30. Ruffridge, Elle-MSU	Sr	20	516	25.8



2020-21 Missouri Valley Conference
INDIVIDUAL BASKETBALL STATISTICS
Through games of Feb 28, 2021 (All games)



TEAM IDENTIFICATION	Team ID
Bradley	BRAD
Drake	DU
Evansville	UE
Illinois State	ILS
Indiana State	INS
Loyola	LUC
Missouri State	MSU
Northern Iowa	UNI
Southern Illinois	SIU
Valparaiso	VALPO



2020-21 Missouri Valley Conference
CONFERENCE BASKETBALL STATISTICS
Through games of Feb 28, 2021 (Conference games only)



SCORING OFFENSE	G	W-L	Pts	Avg/G
1. Drake	16	11-5	1227	76.7
2. Northern Iowa	16	9-7	1159	72.4
3. Bradley	16	8-8	1097	68.6
4. Missouri State	14	14-0	950	67.9
5. Illinois State	15	10-6	1010	67.3
6. Valparaiso	14	7-7	882	63.0
7. Southern Illinois	16	5-11	946	59.1
8. Indiana State	12	2-10	692	57.7
9. Loyola	16	8-8	899	56.2
10. Evansville	15	2-14	754	50.3

SCORING DEFENSE	G	Pts	Avg/G
1. Loyola	16	911	56.9
2. Missouri State	14	806	57.6
3. Illinois State	15	931	62.1
4. Drake	16	1000	62.5
5. Southern Illinois	16	1006	62.9
6. Valparaiso	14	884	63.1
7. Bradley	16	1045	65.3
8. Northern Iowa	16	1047	65.4
9. Evansville	15	1077	71.8
10. Indiana State	12	909	75.8

SCORING MARGIN	G	Offense	Defense	Margin
1. Drake	16	76.7	62.5	+14.2
2. Missouri State	14	67.9	57.6	+10.3
3. Northern Iowa	16	72.4	65.4	+7.0
4. Illinois State	15	67.3	62.1	+5.3
5. Bradley	16	68.6	65.3	+3.2
6. Valparaiso	14	63.0	63.1	-0.1
7. Loyola	16	56.2	56.9	-0.8
8. Southern Illinois	16	59.1	62.9	-3.8
9. Indiana State	12	57.7	75.8	-18.1
10. Evansville	15	50.3	71.8	-21.5

FREE THROW PCT	G	FTM	FTA	Pct.
1. Northern Iowa	16	219	279	.785
2. Missouri State	14	169	231	.732
3. Bradley	16	176	242	.727
4. Illinois State	15	207	286	.724
5. Drake	16	181	252	.718
6. Valparaiso	14	166	232	.716
7. Loyola	16	162	235	.689
8. Evansville	15	184	270	.681
9. Indiana State	12	136	208	.654
10. Southern Illinois	16	127	200	.635

FIELD GOAL PERCENTAGE	G	FGM	FGA	Pct.
1. Drake	16	456	912	.500
2. Illinois State	15	356	820	.434
3. Missouri State	14	356	850	.419
4. Bradley	16	403	963	.418
5. Northern Iowa	16	394	949	.415
6. Southern Illinois	16	358	883	.405
7. Valparaiso	14	294	764	.385
8. Loyola	16	330	860	.384
9. Indiana State	12	252	715	.352
10. Evansville	15	260	784	.332

FIELD GOAL PCT DEFENSE	G	FGM	FGA	Pct.
1. Drake	16	367	1000	.367
2. Illinois State	15	323	836	.386
3. Loyola	16	335	854	.392
4. Evansville	15	382	958	.399
5. Missouri State	14	292	730	.400
6. Bradley	16	363	907	.400
7. Valparaiso	14	312	779	.401
8. Northern Iowa	16	393	960	.409
9. Southern Illinois	16	362	791	.458
10. Indiana State	12	330	685	.482

3-POINT FG PCT	G	3FGM	3FGA	Pct.
1. Drake	16	134	338	.396
2. Illinois State	15	91	261	.349
3. Bradley	16	115	342	.336
4. Northern Iowa	16	152	456	.333
5. Southern Illinois	16	103	320	.322
6. Valparaiso	14	128	399	.321
7. Missouri State	14	69	223	.309
8. Loyola	16	77	253	.304
9. Indiana State	12	52	207	.251
10. Evansville	15	50	237	.211

3-POINT FG PCT DEFENSE	G	3FGM	3FGA	Pct.
1. Loyola	16	84	309	.272
2. Drake	16	105	364	.288
3. Valparaiso	14	75	253	.296
4. Missouri State	14	79	253	.312
5. Illinois State	15	98	313	.313
6. Northern Iowa	16	75	234	.321
7. Evansville	15	154	460	.335
8. Bradley	16	120	346	.347
9. Southern Illinois	16	89	248	.359
10. Indiana State	12	92	256	.359

REBOUNDING OFFENSE	G	Rebounds	Avg/G
1. Drake	16	636	39.8
2. Missouri State	14	543	38.8
3. Northern Iowa	16	599	37.4
4. Bradley	16	590	36.9
5. Evansville	15	525	35.0
6. Loyola	16	555	34.7
7. Illinois State	15	517	34.5
8. Indiana State	12	413	34.4
9. Southern Illinois	16	530	33.1
10. Valparaiso	14	437	31.2

REBOUNDING DEFENSE	G	Rebounds	Avg/G
1. Missouri State	14	433	30.9
2. Southern Illinois	16	498	31.1
3. Drake	16	522	32.6
4. Illinois State	15	512	34.1
5. Loyola	16	561	35.1
6. Northern Iowa	16	573	35.8
7. Bradley	16	575	35.9
8. Indiana State	12	465	38.8
9. Valparaiso	14	562	40.1
10. Evansville	15	644	42.9



2020-21 Missouri Valley Conference
CONFERENCE BASKETBALL STATISTICS
Through games of Feb 28, 2021 (Conference games only)



REBOUNDING MARGIN	G	Team	Avg.	Opp.	Avg.	Margin
1. Missouri State	14	543	38.8	433	30.9	+7.9
2. Drake	16	636	39.8	522	32.6	+7.1
3. Southern Illinois	16	530	33.1	498	31.1	+2.0
4. Northern Iowa	16	599	37.4	573	35.8	+1.6
5. Bradley	16	590	36.9	575	35.9	+0.9
6. Illinois State	15	517	34.5	512	34.1	+0.3
7. Loyola	16	555	34.7	561	35.1	-0.4
8. Indiana State	12	413	34.4	465	38.8	-4.3
9. Evansville	15	525	35.0	644	42.9	-7.9
10. Valparaiso	14	437	31.2	562	40.1	-8.9

BLOCKED SHOTS	G	No.	Avg/G
1. Bradley	16	78	4.9
2. Drake	16	74	4.6
3. Missouri State	14	57	4.1
4. Northern Iowa	16	61	3.8
5. Loyola	16	49	3.1
6. Valparaiso	14	38	2.7
7. Illinois State	15	37	2.5
8. Evansville	15	36	2.4
9. Indiana State	12	21	1.8
10. Southern Illinois	16	22	1.4

ASSISTS	G	No.	Avg/G
1. Drake	16	338	21.1
2. Northern Iowa	16	254	15.9
3. Missouri State	14	214	15.3
4. Southern Illinois	16	224	14.0
5. Bradley	16	218	13.6
6. Valparaiso	14	176	12.6
7. Indiana State	12	138	11.5
8. Loyola	16	172	10.8
9. Illinois State	15	150	10.0
10. Evansville	15	132	8.8

STEALS	G	No.	Avg/G
1. Missouri State	14	143	10.2
2. Valparaiso	14	127	9.1
3. Indiana State	12	101	8.4
4. Drake	16	132	8.3
5. Northern Iowa	16	121	7.6
6. Illinois State	15	112	7.5
7. Southern Illinois	16	117	7.3
8. Loyola	16	116	7.3
9. Bradley	16	112	7.0
10. Evansville	15	97	6.5

TURNOVER MARGIN	G	Team	Avg.	Opp.	Avg.	Margin
1. Missouri State	14	176	12.6	232	16.6	+4.0
2. Valparaiso	14	201	14.4	247	17.6	+3.3
3. Bradley	16	213	13.3	235	14.7	+1.4
4. Illinois State	15	222	14.8	235	15.7	+0.9
5. Indiana State	12	170	14.2	174	14.5	+0.3
6. Northern Iowa	16	249	15.6	254	15.9	+0.3
7. Loyola	16	246	15.4	249	15.6	+0.2
8. Southern Illinois	16	227	14.2	224	14.0	-0.2
9. Drake	16	300	18.8	241	15.1	-3.7
10. Evansville	15	289	19.3	202	13.5	-5.8

ASSIST/TURNOVER RATIO	G	Ast.	Avg.	T/O	Avg.	Ratio
1. Missouri State	14	214	15.3	176	12.6	1.2
2. Drake	16	338	21.1	300	18.8	1.1
3. Bradley	16	218	13.6	213	13.3	1.0
4. Northern Iowa	16	254	15.9	249	15.6	1.0
5. Southern Illinois	16	224	14.0	227	14.2	1.0
6. Valparaiso	14	176	12.6	201	14.4	0.9
7. Indiana State	12	138	11.5	170	14.2	0.8
8. Loyola	16	172	10.8	246	15.4	0.7
9. Illinois State	15	150	10.0	222	14.8	0.7
10. Evansville	15	132	8.8	289	19.3	0.5

OFFENSIVE REBOUNDS	G	No.	Avg/G
1. Missouri State	14	182	13.0
2. Indiana State	12	144	12.0
3. Southern Illinois	16	181	11.3
4. Northern Iowa	16	176	11.0
5. Bradley	16	169	10.6
6. Loyola	16	161	10.1
7. Drake	16	160	10.0
8. Evansville	15	124	8.3
9. Illinois State	15	110	7.3
10. Valparaiso	14	101	7.2

DEFENSIVE REBOUNDS	G	No.	Avg/G
1. Drake	16	476	29.8
2. Illinois State	15	407	27.1
3. Evansville	15	401	26.7
4. Northern Iowa	16	423	26.4
5. Bradley	16	421	26.3
6. Missouri State	14	361	25.8
7. Loyola	16	394	24.6
8. Valparaiso	14	336	24.0
9. Indiana State	12	269	22.4
10. Southern Illinois	16	349	21.8

DEFENSIVE REB PCT.	G	D-Reb	Opp. OR	D-Reb%
1. Missouri State	14	361	97	.788
2. Illinois State	15	407	131	.757
3. Southern Illinois	16	349	118	.747
4. Bradley	16	421	158	.727
5. Loyola	16	394	156	.716
6. Drake	16	476	194	.710
7. Northern Iowa	16	423	174	.709
8. Indiana State	12	269	116	.699
9. Valparaiso	14	336	163	.673
10. Evansville	15	401	201	.666

OFFENSIVE REB PCT.	G	O-Reb	Opp. DR	O-Reb%
1. Missouri State	14	182	336	.351
2. Drake	16	160	328	.328
3. Southern Illinois	16	181	380	.323
4. Northern Iowa	16	176	399	.306
5. Indiana State	12	144	349	.292
6. Bradley	16	169	417	.288
7. Loyola	16	161	405	.284
8. Illinois State	15	110	381	.224
9. Evansville	15	124	443	.219
10. Valparaiso	14	101	399	.202



2020-21 Missouri Valley Conference
CONFERENCE BASKETBALL STATISTICS
Through games of Feb 28, 2021 (Conference games only)



3-POINT FG MADE	G	No.	Avg/G
1. Northern Iowa	16	152	9.5
2. Valparaiso	14	128	9.1
3. Drake	16	134	8.4
4. Bradley	16	115	7.2
5. Southern Illinois	16	103	6.4
6. Illinois State	15	91	6.1
7. Missouri State	14	69	4.9
8. Loyola	16	77	4.8
9. Indiana State	12	52	4.3
10. Evansville	15	50	3.3



2020-21 Missouri Valley Conference
CONFERENCE BASKETBALL STATISTICS
Through games of Feb 28, 2021 (Conference games only)



Team	Conference	Pct.	PF	PA	Overall	Pct.	PF	PA	Current unbeaten streak
Missouri State	14-0	1.000	67.9	57.6	14-0	1.000	67.9	57.6	Missouri State -- 14
Drake	11-5	.688	76.7	62.5	11-5	.688	76.7	62.5	Valparaiso -- 4
Illinois State	10-6	.625	63.1	58.2	10-6	.625	67.3	62.1	Illinois State -- 3
Northern Iowa	9-7	.562	72.4	65.4	9-7	.562	72.4	65.4	Northern Iowa -- 2
Bradley	8-8	.500	68.6	65.3	8-8	.500	68.6	65.3	Drake -- 1
Loyola	8-8	.500	56.2	56.9	8-8	.500	56.2	56.9	Indiana State -- 1
Valparaiso	7-7	.500	63.0	63.1	7-7	.500	63.0	63.1	
Southern Illinois	5-11	.312	59.1	62.9	5-11	.312	59.1	62.9	
Indiana State	2-10	.167	57.7	75.8	2-10	.167	57.7	75.8	
Evansville	2-14	.125	47.1	67.3	2-14	.125	50.3	71.8	

TEAM SUMMARIES	G	PF-PA	Avg score	Margin	FG-FGA	Pct.	3FG-FGA	Pct.	FT-FTA	Pct.	RebF	RebA	Margin
Bradley	16	1097-1045	68.6-65.3	+3.3	403-963	.418	115-342	.336	176-242	.727	590	575	+0.9
Drake	16	1227-1000	76.7-62.5	+14.2	456-912	.500	134-338	.396	181-252	.718	636	522	+7.1
Evansville	15	754-1077	50.3-71.8	-21.5	260-784	.332	50-237	.211	184-270	.681	525	644	-7.9
Illinois State	15	1010-931	67.3-62.1	+5.3	356-820	.434	91-261	.349	207-286	.724	517	512	+0.3
Indiana State	12	692-909	57.7-75.8	-18.1	252-715	.352	52-207	.251	136-208	.654	413	465	-4.3
Loyola	16	899-911	56.2-56.9	-0.7	330-860	.384	77-253	.304	162-235	.689	555	561	-0.4
Missouri State	14	950-806	67.9-57.6	+10.3	356-850	.419	69-223	.309	169-231	.732	543	433	+7.9
Northern Iowa	16	1159-1047	72.4-65.4	+7.0	394-949	.415	152-456	.333	219-279	.785	599	573	+1.6
Southern Illinois	16	946-1006	59.1-62.9	-3.7	358-883	.405	103-320	.322	127-200	.635	530	498	+2.0
Valparaiso	14	882-884	63.0-63.1	-0.1	294-764	.385	128-399	.321	166-232	.716	437	562	-8.9

ATTENDANCE	Home	Average	Away	Average	Neutral	Average	Total	Average
Bradley	7-0	0	9-3464	385	0-0	0	16-3464	216
Drake	7-2003	286	9-3512	390	0-0	0	16-5515	345
Evansville	7-0	0	8-1220	152	0-0	0	15-1220	81
Illinois State	8-0	0	7-1170	167	0-0	0	15-1170	78
Indiana State	7-530	76	5-503	101	0-0	0	12-1033	86
Loyola	7-0	0	9-3597	400	0-0	0	16-3597	225
Missouri State	7-9547	1364	7-1156	165	0-0	0	14-10703	764
Northern Iowa	9-4118	458	7-655	94	0-0	0	16-4773	298
Southern Illinois	7-50	7	9-1675	186	0-0	0	16-1725	108
Valparaiso	9-704	78	5-0	0	0-0	0	14-704	50
Totals	75-16952	226	75-16952	226	0-0	0	150-33904	226



2020-21 Missouri Valley Conference
INDIVIDUAL BASKETBALL STATISTICS
Through games of Feb 28, 2021 (Conference games only)



To be ranked, a player must appear in at least 75.0% of their team's games.

SCORING								REBOUNDING							
	Cl	G	FG	3FG	FT	Pts	Avg/G		Cl	G	Off	Def	Total	Avg/G	
1. Berg,Grace-DU	So	16	105	9	48	267	16.7	1. Franklin,Jasmine-MSU	Jr	14	43	101	144	10.3	
2. Haack, Gabi-BRAD	Sr	16	89	39	47	264	16.5	2. Feit, Abby-UE	So	15	12	100	112	7.5	
3. Petree, Lasha-BRAD	Jr	16	90	30	50	260	16.3	3. Folks,Adrian-INS	So	12	27	54	81	6.8	
4. Frederick, Shay-Valpo	Jr	14	62	29	64	217	15.5	4. Redmond, Juliunn-ILS	Sr	15	18	83	101	6.7	
5. Silvey, Makenzie-SIU	Sr	14	86	25	10	207	14.8	5. Burich,Monica-DU	Sr	16	26	80	106	6.6	
6. Redmond, Juliunn-ILS	Sr	15	81	16	43	221	14.7	6. Haack, Gabi-BRAD	Sr	16	26	78	104	6.5	
7. RUCKER, Karli-UNI	Sr	16	89	24	32	234	14.6	7. GUNNELS, Bre-UNI	Sr	16	29	72	101	6.3	
8. Franklin,Jasmine-MSU	Jr	14	71	0	48	190	13.6	8. Day, Allison-LUC	Jr	16	35	65	100	6.3	
9. Weinman, Carie-Valpo	Jr	14	69	23	28	189	13.5	McChristine,Jamyra-INS	Sr	12	37	38	75	6.3	
10. Calip,Brice-MSU	Sr	14	58	12	54	182	13.0	10. White, Grace-Valpo	Sr	12	17	55	72	6.0	
11. Feit, Abby-UE	So	15	67	11	47	192	12.8	11. Wilson, DeAnna-ILS	So	15	25	64	89	5.9	
12. Folks,Adrian-INS	So	12	59	1	26	145	12.1	12. Thurwalker, Sydney-UE	So	15	26	56	82	5.5	
13. Crompton,Mary-ILS	So	15	54	36	23	167	11.1	13. MAAHS, Megan-UNI	Sr	16	25	56	81	5.1	
14. White, Nyjah-BRAD	Sr	16	76	0	25	177	11.1	14. White, Nyjah-BRAD	Sr	16	22	58	80	5.0	
15. Moore,Terrion-ILS	Jr	15	58	16	30	162	10.8	Marsh, Emily-BRAD	Sr	16	16	64	80	5.0	
16. Day, Allison-LUC	Jr	16	65	2	37	169	10.6	Hipp,Abby-MSU	Sr	14	32	38	70	5.0	
17. Rice, Ellie-LUC	Sr	16	59	22	22	162	10.1	17. Wooldridge,Allie-DU	Jr	16	16	61	77	4.8	
18. Collier,Kierra-DU	Jr	12	46	15	14	121	10.1	Berg,Grace-DU	So	16	25	52	77	4.8	
19. McCallister, Payton-SIU	Jr	16	54	30	22	160	10.0	19. Silvey, Makenzie-SIU	Sr	14	12	53	65	4.6	
20. Hipp,Abby-MSU	Sr	14	61	2	15	139	9.9	20. Wolf, Cynthia-UNI	Jr	16	23	51	74	4.6	
21. White, Grace-Valpo	Sr	12	40	13	24	117	9.8								
22. Monahan,Maddie-DU	Sr	13	40	21	24	125	9.6								
23. Hunter,Marie-INS	Sr	9	34	6	11	85	9.4								
24. Anderson,Caitlin-INS	So	11	32	0	37	101	9.2								
25. Walker, Gabby-SIU	Sr	15	54	0	29	137	9.1								
26. Hampton-Bey, Bre-LUC	Sr	12	35	1	38	109	9.1								
27. Gueldner,Sarah Beth-DU	So	16	52	37	3	144	9.0								
28. McChristine,Jamyra-INS	Sr	12	41	0	22	104	8.7								
29. Morrison, Caitlin-Valpo	Sr	14	44	26	7	121	8.6								
30. Ruffridge,Elle-MSU	Sr	14	43	24	8	118	8.4								

FIELD GOAL PCT						ASSISTS			
	Cl	G	FGM	FGA	Pct.		Cl	G	No. Avg/G
1. Wolf, Cynthia-UNI	Jr	16	48	82	.585	1. Calip,Brice-MSU	Sr	14	69 4.9
2. Berg,Grace-DU	So	16	105	186	.565	2. Frederick, Shay-Valpo	Jr	14	64 4.6
3. Burich,Monica-DU	Sr	16	52	98	.531	3. RUCKER, Karli-UNI	Sr	16	73 4.6
4. Hipp,Abby-MSU	Sr	14	61	117	.521	4. Monahan,Maddie-DU	Sr	13	56 4.3
5. Day, Allison-LUC	Jr	16	65	127	.512	5. White, Nyjah-BRAD	Sr	16	61 3.8
6. Gueldner,Sarah Beth-DU	So	16	52	102	.510	6. Collier,Kierra-DU	Jr	12	40 3.3
7. Walker, Gabby-SIU	Sr	15	54	106	.509	7. Wooldridge,Allie-DU	Jr	16	48 3.0
8. Franklin,Jasmine-MSU	Jr	14	71	142	.500	8. Link, Caitlin-SIU	Jr	16	46 2.9
9. Haack, Gabi-BRAD	Sr	16	89	180	.494	9. Berg,Grace-DU	So	16	44 2.8
10. Folks,Adrian-INS	So	12	59	123	.480	10. Galanopoulos, Sam-LUC	So	16	43 2.7
11. Moore,Terrion-ILS	Jr	15	58	126	.460	11. White, Grace-Valpo	Sr	12	32 2.7
12. Monahan,Maddie-DU	Sr	13	40	88	.455	12. Silvey, Makenzie-SIU	Sr	14	37 2.6
13. Weinman, Carie-Valpo	Jr	14	69	153	.451	13. Newman, Anna-UE	Jr	13	34 2.6
14. Silvey, Makenzie-SIU	Sr	14	86	191	.450	14. Wilson,Sydney-MSU	Jr	14	36 2.6
15. Redmond, Juliunn-ILS	Sr	15	81	180	.450	15. Saylor,Paige-ILS	Sr	15	38 2.5



2020-21 Missouri Valley Conference
INDIVIDUAL BASKETBALL STATISTICS
Through games of Feb 28, 2021 (Conference games only)



FREE THROW PCT		Cl	G	FTM	FTA	Pct.
1.	MAAHS, Megan-UNI	Sr	16	42	46	.913
2.	Calip,Brice-MSU	Sr	14	54	62	.871
3.	Petree, Lasha-BRAD	Jr	16	50	60	.833
4.	RUCKER, Karli-UNI	Sr	16	32	39	.821
5.	Berg,Grace-DU	So	16	48	59	.814
6.	Haack, Gabi-BRAD	Sr	16	47	58	.810
7.	GUNNELS, Bre-UNI	Sr	16	45	56	.804
8.	Frederick, Shay-Valpo	Jr	14	64	80	.800
	Weinman, Carie-Valpo	Jr	14	28	35	.800
10.	Feit, Abby-UE	So	15	47	59	.797
11.	Redmond, Juliunn-ILS	Sr	15	43	54	.796
12.	Day, Allison-LUC	Jr	16	37	48	.771
13.	Newman, Anna-UE	Jr	13	32	42	.762
14.	Anderson,Caitlin-INS	So	11	37	49	.755
15.	White, Grace-Valpo	Sr	12	24	33	.727

3-POINT FG PCT		Cl	G	3FG	FGA	Pct.
1.	Gueldner,Sarah Beth-DU	So	16	37	78	.474
2.	Monahan,Maddie-DU	Sr	13	21	48	.438
3.	Crompton,Mary-ILS	So	15	36	86	.419
4.	Frederick, Shay-Valpo	Jr	14	29	72	.403
5.	Koenig, Tatum-BRAD	Jr	16	26	66	.394
6.	Haack, Gabi-BRAD	Sr	16	39	103	.379
7.	LAUBE, Kayba-UNI	Fr	16	24	64	.375
8.	Weinman, Carie-Valpo	Jr	14	23	62	.371
9.	RUCKER, Karli-UNI	Sr	16	24	65	.369
10.	Morrison, Caitlin-Valpo	Sr	14	26	71	.366
11.	Collier,Kierra-DU	Jr	12	15	41	.366
12.	KROEGER, Nicole-UNI	Sr	16	22	61	.361
13.	Brown, Anna-LUC	So	16	17	48	.354
14.	Link, Caitlin-SIU	Jr	16	18	51	.353
15.	Ruffridge,Elle-MSU	Sr	14	24	70	.343

BLOCKED SHOTS		Cl	G	No.	Avg/G
1.	Petree, Lasha-BRAD	Jr	16	35	2.2
2.	Tanin, Sitori-LUC	Fr	16	20	1.3
3.	Morrison, Caitlin-Valpo	Sr	14	15	1.1
4.	GUNNELS, Bre-UNI	Sr	16	17	1.1
5.	Franklin,Jasmine-MSU	Jr	14	14	1.0
6.	Feit, Abby-UE	So	15	14	0.9
7.	Jackson,Abigayle-MSU	Sr	14	13	0.9
8.	Burich,Monica-DU	Sr	16	14	0.9
9.	Wolf, Cynthia-UNI	Jr	16	13	0.8
10.	Berg,Grace-DU	So	16	12	0.8
	White, Grace-Valpo	Sr	12	9	0.8
12.	Poland, Jada-UE	Sr	15	11	0.7
13.	Marsh, Emily-BRAD	Sr	16	11	0.7
	MAAHS, Megan-UNI	Sr	16	11	0.7
15.	Wooldridge,Allie-DU	Jr	16	10	0.6

STEALS		Cl	G	No.	Avg/G
1.	Franklin,Jasmine-MSU	Jr	14	38	2.7
2.	Calip,Brice-MSU	Sr	14	37	2.6
3.	Weinman, Carie-Valpo	Jr	14	36	2.6
4.	White, Grace-Valpo	Sr	12	22	1.8
5.	Moore,Terrion-ILS	Jr	15	26	1.7
6.	McCallister, Payton-SIU	Jr	16	27	1.7
7.	Berg,Grace-DU	So	16	25	1.6
8.	Anderson,Caitlin-INS	So	11	17	1.5
9.	Petree, Lasha-BRAD	Jr	16	23	1.4
	White, Nyjah-BRAD	Sr	16	23	1.4
11.	Frederick, Shay-Valpo	Jr	14	20	1.4
12.	Redmond, Juliunn-ILS	Sr	15	21	1.4
13.	Williams,Del'Janae-INS	So	11	15	1.4
14.	McChristine,Jamyra-INS	Sr	12	16	1.3
15.	Hunter,Marie-INS	Sr	9	11	1.2

3-POINT FG MADE		Cl	G	3FG	Avg/G
1.	Haack, Gabi-BRAD	Sr	16	39	2.4
2.	Crompton,Mary-ILS	So	15	36	2.4
3.	Gueldner,Sarah Beth-DU	So	16	37	2.3
4.	Frederick, Shay-Valpo	Jr	14	29	2.1
5.	McCallister, Payton-SIU	Jr	16	30	1.9
	Petree, Lasha-BRAD	Jr	16	30	1.9
7.	Morrison, Caitlin-Valpo	Sr	14	26	1.9
8.	Silvey, Makenzie-SIU	Sr	14	25	1.8
9.	Ruffridge,Elle-MSU	Sr	14	24	1.7
10.	Weinman, Carie-Valpo	Jr	14	23	1.6
11.	Koenig, Tatum-BRAD	Jr	16	26	1.6
12.	Monahan,Maddie-DU	Sr	13	21	1.6
13.	FINLEY, Kam-UNI	Jr	15	23	1.5
14.	LAUBE, Kayba-UNI	Fr	16	24	1.5
	RUCKER, Karli-UNI	Sr	16	24	1.5

ASSIST/TURNOVER RATIO		Cl	G	Ast.	T/O	Ratio
1.	Calip,Brice-MSU	Sr	14	69	22	3.1
2.	RUCKER, Karli-UNI	Sr	16	73	41	1.8
3.	Monahan,Maddie-DU	Sr	13	56	33	1.7
4.	White, Nyjah-BRAD	Sr	16	61	45	1.4
5.	Wooldridge,Allie-DU	Jr	16	48	39	1.2
6.	Frederick, Shay-Valpo	Jr	14	64	54	1.2
7.	Collier,Kierra-DU	Jr	12	40	40	1.0



2020-21 Missouri Valley Conference
INDIVIDUAL BASKETBALL STATISTICS
Through games of Feb 28, 2021 (Conference games only)



OFFENSIVE REBOUNDS	Cl	G	No.	Avg/G
1. McChristine, Jamyra-INS	Sr	12	37	3.1
2. Franklin, Jasmine-MSU	Jr	14	43	3.1
3. Hipp, Abby-MSU	Sr	14	32	2.3
4. Folks, Adrian-INS	So	12	27	2.3
5. Day, Allison-LUC	Jr	16	35	2.2
6. Wilson, Sydney-MSU	Jr	14	30	2.1
7. Walker, Gabby-SIU	Sr	15	31	2.1
8. Hampton-Bey, Bre-LUC	Sr	12	22	1.8
9. GUNNELS, Bre-UNI	Sr	16	29	1.8
10. Thurwalker, Sydney-UE	So	15	26	1.7
11. Wilson, DeAnna-ILS	So	15	25	1.7
12. Burich, Monica-DU	Sr	16	26	1.6
Tanin, Sitori-LUC	Fr	16	26	1.6
Haack, Gabi-BRAD	Sr	16	26	1.6
15. MAAHS, Megan-UNI	Sr	16	25	1.6
Becker, Courtney-DU	Fr	16	25	1.6
Berg, Grace-DU	So	16	25	1.6

DEFENSIVE REBOUNDS	Cl	G	No.	Avg/G
1. Franklin, Jasmine-MSU	Jr	14	101	7.2
2. Feit, Abby-UE	So	15	100	6.7
3. Redmond, Juliunn-ILS	Sr	15	83	5.5
4. Burich, Monica-DU	Sr	16	80	5.0
5. Haack, Gabi-BRAD	Sr	16	78	4.9
6. White, Grace-Valpo	Sr	12	55	4.6
7. GUNNELS, Bre-UNI	Sr	16	72	4.5
Folks, Adrian-INS	So	12	54	4.5
9. Wilson, DeAnna-ILS	So	15	64	4.3
10. Day, Allison-LUC	Jr	16	65	4.1
11. Marsh, Emily-BRAD	Sr	16	64	4.0
12. Moore, Terrion-ILS	Jr	15	59	3.9
13. Wooldridge, Allie-DU	Jr	16	61	3.8
Rice, Ellie-LUC	Sr	16	61	3.8
15. Silvey, Makenzie-SIU	Sr	14	53	3.8

MINUTES PLAYED	Cl	G	No.	Avg/G
1. Frederick, Shay-Valpo	Jr	14	497	35.5
2. Feit, Abby-UE	So	15	527	35.1
3. Haack, Gabi-BRAD	Sr	16	557	34.8
4. Weinman, Carrie-Valpo	Jr	14	475	33.9
5. McCallister, Payton-SIU	Jr	16	542	33.9
6. Koenig, Tatum-BRAD	Jr	16	540	33.8
7. Silvey, Makenzie-SIU	Sr	14	468	33.4
8. Calip, Brice-MSU	Sr	14	464	33.1
9. Rice, Ellie-LUC	Sr	16	522	32.6
10. Redmond, Juliunn-ILS	Sr	15	487	32.5
11. Crompton, Mary-ILS	So	15	484	32.3
12. Wilson, Sydney-MSU	Jr	14	450	32.1
13. Saylor, Paige-ILS	Sr	15	480	32.0
14. Petree, Lasha-BRAD	Jr	16	504	31.5
15. White, Grace-Valpo	Sr	12	376	31.3
16. Newman, Anna-UE	Jr	13	398	30.6
17. Folks, Adrian-INS	So	12	367	30.6
18. Link, Caitlin-SIU	Jr	16	485	30.3
19. RUCKER, Karli-UNI	Sr	16	474	29.6
20. Moore, Terrion-ILS	Jr	15	437	29.1
21. Galanopoulos, Sam-LUC	So	16	458	28.6
22. Day, Allison-LUC	Jr	16	448	28.0
23. Berg, Grace-DU	So	16	447	27.9
24. Ruffridge, Elle-MSU	Sr	14	387	27.6
25. Franklin, Jasmine-MSU	Jr	14	381	27.2
26. White, Nyjah-BRAD	Sr	16	432	27.0
Poland, Jada-UE	Sr	15	405	27.0
Pitzer, Sommer-INS	So	10	270	27.0
29. Chandler, Maya-LUC	Fr	16	424	26.5
30. Hunter, Marie-INS	Sr	9	236	26.2



2020-21 Missouri Valley Conference
INDIVIDUAL BASKETBALL STATISTICS
Through games of Feb 28, 2021 (Conference games only)



TEAM IDENTIFICATION	Team ID
Bradley	BRAD
Drake	DU
Evansville	UE
Illinois State	ILS
Indiana State	INS
Loyola	LUC
Missouri State	MSU
Northern Iowa	UNI
Southern Illinois	SIU
Valparaiso	VALPO