



2020-21 Standings -- As of Mon., Feb. 22

	MISSOURI VALLEY				OVERALL				
	Record	Pct.	PF	PA	Record	Pct.	PF	PA	NET
#20/23 Missouri State	11-0	1.000	69.1	59.6	15-2	.882	70.5	58.9	24
Drake	10-5	.667	76.7	62.9	12-10	.545	77.4	69.0	50
Loyola	8-5	.615	57.6	56.2	10-7	.588	60.6	58.7	134
Illinois State	9-6	.600	62.1	58.1	12-6	.667	69.6	59.9	69
Northern Iowa	7-6	.538	72.3	68.5	10-10	.500	71.3	70.2	76
Bradley	8-7	.533	69.2	64.4	12-10	.545	70.6	65.4	81
Southern Illinois	5-8	.385	58.8	61.1	8-10	.444	59.8	61.7	148
Valparaiso	4-7	.364	61.8	63.8	8-10	.444	63.8	64.9	132
Evansville	2-11	.154	46.6	63.8	6-12	.333	56.4	67.5	292
Indiana State	1-10	.091	55.2	76.4	4-12	.250	60.4	74.4	273

• • MVC Home: 34-31 • • Non-Conference: 32-24 • Home: 20-7 • Away: 11-16 • Neutral: 1-1 • Top-25: 2-2 • •

Recent Results/ Upcoming Schedule

Friday, February 19

Drake at Illinois State ILS, 76-68
Southern Illinois at Indiana State.....SIU, 84-69
Evansville at Valparaiso UE, 57-43
Loyola at UNI UNI, 78-51
Bradley at #20/25 Missouri State.....MSU, 62-56

Saturday, February 20

Southern Illinois at Indiana State..... SIU, 76-52
Loyola at UNI LUC, 66-64 (OT)
Drake at Illinois State ILS, 81-71
Evansville at Valparaiso VU, 71-56
Bradley at #20/25 Missouri State.....MSU, 75-62

Wednesday, February 24

Evansville at Indiana State (ESPN3)5 PM
Drake at UNI (ESPN3)6 PM
#23 Missouri State at Southern Illinois (ESPN3)6 PM
Valparaiso at Loyola (ESPN3)6 PM

Thursday, February 25

Illinois State at Bradley (ESPN3)6 PM

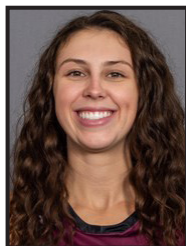
Saturday, February 27

Evansville at UNI (ESPN3)1 PM
Valparaiso at Southern Illinois (ESPN3)4 PM
Loyola at #23 Missouri State (ESPN+)5 PM

Sunday, February 28

Evansville at UNI (ESPN3) 12 PM
Valparaiso at Southern Illinois (ESPN3)4 PM
Loyola at #23 Missouri State (ESPN+)5 PM

ALL TIMES CENTRAL



MVC Player of the Week

Makenzie Silvey, Sr., G, Southern Illinois

Makenzie Silvey led the Salukis to a sweep of the Indiana State Sycamores over the weekend. The senior from Glen Carbon, Ill. had her way with the Sycamores all weekend, as she averaged a robust 23.5 points on 55.6-percent (20-of-36) shooting, which including 50-percent (7-of-14) from behind the arc. The two-time All-MVC selection also added 5.5 rebounds and 4.5 assists in 32.1 minutes per game. Silvey went for a game-high 26 points on an efficient 11-of-18 from the field and added six boards, six assists and steal in 29 minutes of work in SIU's 84-69 win on Friday. She followed with 21 points on 9-of-18 shooting in Southern's 76-52 win on Saturday.

Other Notable Performances: Gabi Haack (BU); Grace Berg (DU); Anna Newman (UE); Terrion Moore (ILS); Caitlin Anderson (INS); Allison Day (LUC); Jasmine Franklin (MSU); Nicole Kroeger (UNI); Carie Weinman (VU)



MVC Newcomer of the Week

Terrion Moore, Jr., G, Illinois State

Junior Terrion Moore averaged 14.0 points, 4.5 rebounds and 3.0 steals in Illinois State's sweep of Drake over the weekend, helping the Redbirds snap the Bulldogs' 15-game winning streak in the series that dated back to 2014. Moore posted 10 points in Friday's 76-68 win over Drake, grabbing five boards, picking up three steals and recording a game-best +14 plus/minus. The junior then paced the Redbirds in Saturday's rematch, going off for a team-high 18 points, shooting 50% (4-of-8) from behind the arc while also adding four rebounds, three steals and two assists. Moore's +17 plus/minus in Saturday's victory was again a game high. In her debut season with ISU, Moore is currently ranked fifth in the Valley with 2.0 steals per contest, and 15th in scoring with 11.2 points per game.

Other Notable Performances: Grace Berg (DU); Rylie Stephens (UE); Bre Hampton-Bey (LUC); Abi Jackson (MSU); Molly Sheehan (VU)

NOTEWORTHY

In addition to the league's Player and Newcomer of the Week selections, several conference players had notable performances, including:

Gabi Haack (BRAD) - Haack averaged 17.0 points, 4.0 rebounds, 2.0 assists and 1.0 steals in the weekend series at Missouri State. Making the 101st consecutive start of her career, she had 10 points, five boards, three assists and one steal in the series opener Friday. Haack followed that up with a game-high 24 points on 7-for-11 shooting in Saturday's contest. Scoring her 1,500th career point Saturday, Haack broke into the top 10 in MVC history in career three-point field goals by shooting 3-of-5 from beyond the arc in Saturday's outing and is now tied for eighth in league history with 262 career triples. She also moved into third in Bradley history in career made free throws during Saturday's series finale, going a combined 11-for-13 from the charity stripe in the series.

Grace Berg (DU) - Grace Berg averaged 19.0 points, 4.5 rebounds, 2.0 assists and 1.5 steals while shooting 65.2 percent (15-of-23) from the floor, including 2-of-4 (50.0 percent) from three and making 6-of-7 (85.7 percent) at the free throw line against Illinois State. Berg had a team-high 16 points in the first game against the Redbirds and closed with another team-high of 22 points and added seven rebounds, four assists and two steals in the finale. In her first season, Berg leads the MVC in shooting at 54.4 percent and ranks second in scoring at 16.6 points per game and second in free throw percentage at 83.3.

Anna Newman (UE) - Back-to-back stellar performances for junior guard Anna Newman helped the Aces earn a weekend split with Valparaiso. In Evansville's 57-43 win over Valpo on Friday night, Newman set an Evansville program record with 15 made free-throws, tied for sixth-most in the nation in game this season. Newman tied her career high with 17 points, adding six rebounds and three assists. On Saturday, Newman again had a major part in the Aces' offense, dishing-out 11 assists, while scoring six points and grabbing three boards. On the season, Newman sits fourth in The Valley, averaging 4.1 assists per contest.

Caitlin Anderson (INS) - Caitlin Anderson was the leader on the court for Indiana State during their series with Southern Illinois. The sophomore averaged 16.5 points, 3.5 rebounds, 3.0 assists and 1.5 steals per game over the weekend, including a season-best 22 points on 8-of-11 shooting on Friday evening to go along with five assists and three rebounds. She followed that performance up with 11 points and four rebounds on Saturday.

Allison Day (LUC) - Loyola junior forward Allison Day operated at a scintillating 73.7 percent (14-for-19) from the field and averaged a team-high 19.0 points and 8.0 rebounds as the Ramblers earned a road split against UNI over the weekend. In Friday's series opener, Day paced the Maroon & Gold with 16 points (6-10 FGs, 4-4 FTs), seven rebounds, two assists, and a steal. The Russellville, Ohio product saved her best for Saturday's 66-64 overtime win, pouring in a career-high 22 points (8-9 FGs, 1-1 3FGs, 5-5 FTs), nine rebounds, an assist, and steal to help lead Loyola to its first win in Cedar Falls, Iowa since joining the MVC. Day, who is currently averaging a team-high 11.2 points on the year, is operating at a Valley-best 57.1 percent clip from the field.

Jasmine Franklin (MSU) - Jasmine Franklin averaged a double-double in Missouri State's weekend sweep of Bradley, shooting 53 percent from the floor with 10.5 points, 10.5 rebounds and 4.5 steals per game. Friday, Franklin matched a career high with six steals, tying the most for an MVC player this season, and had 11 points and 12 rebounds for her sixth double-double in league play. Franklin shot 4-for-5 in Saturday's win, finishing with 10 points, nine rebounds and three more steals, and the junior had a blocked shot in each game.

Nicole Kroeger (UNI) - Nicole Kroeger averaged double figures in a split weekend for the Panthers. She score 11 points in UNI's 78-51 win over Loyola Friday before scoring 10 in the Panther's overtime loss Saturday. She was 8-16 (50%) from the field on the weekend, including 5-12 from the three-point line. She had two steals Friday and Saturday.

Carie Weinman (VU) - Weinman had a standout effort on both ends of the court to help Valpo rebound to earn a series split with Evansville. In Saturday's win, the junior scored a game-high 21 points - her fifth 20-point game of the year - on 8-of-11 shooting and matched her career high on the defensive end, recording her third career six-steal game. The junior currently leads the conference in steals/game, attempting to pace the MVC in the category for a second straight year, and is in the top-five in 3-pointers/game and 3-point percentage.

Rylie Stephens (UE) - Freshman Rylie Stephens recorded back-to-back strong efforts for the Aces in a split with Valparaiso. On Friday in a 57-43 Evansville win, Stephens scored four points and tied a season high with seven rebounds in just 15 minutes of action. In Saturday's game, Stephens returned to double-figures for the first time since Jan. 15, scoring 11 points on an efficient 4-of-5 shooting night.

Bre Hampton-Bey (LUC) - Loyola senior forward Bre Hampton-Bey averaged 10.0 points, 5.5 rebounds, and 2.0 assists in the Ramblers' weekend road series at UNI. Hampton-Bey, who returned from injury in Friday's matchup, came off the bench to chip in 10 points (2-4 FGs, 6-8 FTs), four rebounds, a block, and a steal in the series opener. She was back in double figures in Saturday's thrilling 66-64 overtime victory, contributing 10 points (3-10 FGs, 4-8 FTs), seven rebounds, a team-high four assists, and a steal. Hampton-Bey has averaged 9.8 points across her 11 appearances this season, good enough for third on the Rambler roster.

Abi Jackson (MSU) - Abi Jackson averaged 5.5 points, 2.5 rebounds and 2.0 blocks in Missouri State's two victories against Bradley. Jackson had seven points, three boards and three blocks on Saturday, and four points, two rebounds and a stuff on Friday. The senior now ranks fifth in the MVC in blocked shots with 20 on the season.

Emerson Green (UNI) - Emerson Green scored a team-high 13 points Saturday and scored four in UNI's win Friday. She was 5-9 from the field for the weekend and 5-6 from the free throw line.

Molly Sheehan (VU) - A mid-year enrollee, Sheehan made her collegiate debut on Friday with seven fourth-quarter minutes, scoring four points and registering a rebound and a steal. Sheehan became the youngest active D-I player, debuting at 17 years, 39 days old. She then saw 10 minutes of action in Saturday's win, including key minutes in the first half, finishing with a 3-pointer and a rebound.

PLAYERS OF THE WEEK

DATE	PLAYER	SCHOOL
N30	Brice Calip	Missouri State
D7	Grace White	Valparaiso
D14	Lasha Petree	Bradley
D21	Abby Feit	Evansville
D30	Maggie Bair	Drake
J4	Bre Gunnels	UNI
J11	Lasha Petree	Bradley
J19	Brice Calip	Missouri State
J25	Brice Calip	Missouri State
F1	Brice Calip	Missouri State
F8	Gabi Haack	Bradley
F15	Jasmine Franklin	Missouri State
F22	Makenzie Silvey	Southern Illinois
M1		
M8		

NEWCOMERS OF THE WEEK

DATE	PLAYER	SCHOOL
N30	Grace Berg	Drake
D7	Grace Berg	Drake
D14	Essy Latu	Indiana State
D21	Grace Berg	Drake
D30	Bre Hampton-Bey	Loyola
J4	Adrianna Katcher	Southern Illinois
J11	Grace Berg	Drake
J19	Grace Berg	Drake
J25	Maya McDermott	UNI
F1	Terrior Moore	Illinois State
F8	Grace Berg	Drake
F15	Sitori Tanin	Loyola
F22	Terrior Moore	Illinois State
M1		
M8		

MVC Players and Newcomers of the Week are selected each week during the women's basketball season. The players are announced on Monday afternoon and appear in a weekly press release. Nominees are provided by each school's sports information contact and voted on by a panel appointed by the league office.

League Race

Missouri State continues to sit at the top of the standings at 11-0 after sweeping Bradley in Springfield over the weekend. The Lady Bears can lock up the regular season title with one more win to get to 12 league victories. The worst MSU could finish would be 12-4 (.750) in league play (series with Indiana State was cancelled due to COVID-19).

Drake remained in second place despite a pair of losses at Illinois State. The Bulldogs currently sit two games ahead of third place Loyola in the win column as the Ramblers earned a split at UNI.

Illinois State climbed up to fourth following its two wins over Drake. The Redbirds hold a two-game lead over UNI in the win column entering this week.

Bradley fell to sixth in the standings at 8-7, following its two losses at Missouri State. Southern Illinois, Valparaiso, Evansville and Indiana State round out the standings.

To date, the league has played 65 games of the Conference's 90-game regular-season schedule and is currently scheduled to play 86 of the 90.

Still Perfect

Missouri State is now 11-0 in MVC play for the third time in school history. The Lady Bears got to 11-0 in 2004 and 12-0 in 1996. Missouri State is currently one of nine teams nationally still sitting perfect in league play this season.

Elite NCAA Resume

Missouri State is once again putting together an elite NCAA Tournament resume. The Lady Bears are one of 14 teams with at least five Quad 1 wins this season (as of Feb. 22). Missouri State is 11-2 vs. Quad 1 and 2 combined. Only Stanford, Louisville, South Carolina, Texas A&M, Georgia Tech and Missouri State have 11+ wins vs. Q1&2.

The Lady Bears have played the 8th toughest schedule in the nation and joins Stanford as the only teams nationally with at least 8 road Quad 1/2 wins.

Rise of The Valley

The 2019-20 season tied the highest RPI ranking the MVC has recorded in its history showcasing how The Valley is becoming one of the best mid-major leagues in the country. The league also saw five teams in the Top 100 of the RPI for the first time since the 1998-99 season. In 2018-19, the league posted a top-15 RPI for the first time since 2012-13 a year after seeing the league's worst RPI in 2017-18 (24). The Valley is looking to match or surpass last year's record numbers in 2020-21.

Year	MVC RPI	Top 100 RPI Teams
2020-21	7 (NET)	5 (NET)
2019-20	8	5
2018-19	14	3
2017-18	24	2

Conference NET

The Valley ranks 7th nationally in the conference NET report. The Valley sits behind the SEC, ACC, Big 12, Pac-12, Big Ten and Big East entering this week.

NET Update

The latest installment of the NCAA NET Report (Feb. 22) has five Valley teams that rank in the top-90, including eight in the Top 150. Missouri State leads the way at No. 24 with Drake (50), Illinois State (69), UNI (76), and Bradley (81), rounding out the schools in the Top 90.

The Valley joins the ACC, Big 12, Big East, Big Ten, Pac-12 and SEC as the only leagues nationally with five teams in the NET Top 90.

The Valley joins only the Power Five leagues in having eight teams ranking in the Top 150.

BU: Model of Consistency

Senior Gabi Haack scored her 1,500th career point Saturday at Missouri State in what was her 102nd consecutive start. One of just six players in Bradley history with 100 career starts, Haack's streak is second in school history behind Heather Best's (1995-99) record of 107 consecutive starts. Haack is now second in school history in career minutes played (3561) and also ranks second in BU history with 83 outings with 10 or more points. The Bradley record for career double-digit scoring efforts is 85 held by Connie Griffith (1977-81). In addition, Haack broke into the top 10 in MVC history in career three-pointers over the weekend and is currently tied for eighth in league history (262) along with taking over third in Bradley history in career made free throws (324).

DU: Streak Snapped

Drake had its 15-game winning streak over Illinois State snapped. The Bulldogs' impressive streak was the longest current winning streak in the Valley over an MVC opponent. Drake will look to bounce back from the pair of the losses to the Redbirds on Wednesday at UNI in its final road game of the season.

UE: Newman Sets Record

Junior Anna Newman set a new program record in Friday's 57-43 win over Valparaiso. Newman hit 15 free-throws, breaking the previous record of 14, which was set by Latasha Austin twice, most recently against UNI on Feb. 23, 200. The 15 free throws were six more than Newman had ever hit prior to Friday night.

ILS: Showing Depth

The Illinois State bench went a combined 6-for-6 from three-point range and 9-for-16 (60%) from the floor in ISU's lasting outing, a 81-71 victory over Drake. The Redbird bench outscored the Bulldog bench, 30-20, with freshman Kate Bullman finishing with 10 points and redshirt freshman Maya Wong and junior Kayel Newland each chipping in nine.

INS: Taking Care of the Glass

The Sycamores find themselves at second in the conference in offensive rebounds per game, pulling down 13.0, partially thanks to Jamyra McChristine's Valley-leading 3.6 offensive boards per game which is also 31st in the nation. McChristine is third in the Valley in total rebounds per game at 7.1.

LUC: Party Like It's 1984

Loyola secured a crucial road split at UNI this past weekend, winning a thrilling 66-64 overtime contest on Saturday afternoon inside the McLeod Center. Allison Day scored a career-high 22 points in the win, while Ellie Rice's bucket with five seconds remaining proved to be the difference. The victory, which snapped a 10-game skid to the Panthers, marked Loyola's first on the road over UNI since joining the Missouri Valley Conference and the program's first road win in Cedar Falls since an 80-62 triumph back on December 22, 1984.

MSU: Winning Seniors

Missouri State's senior class is proving to be one of the winningest in school history, with four players appearing in at least 85 victories so far in their MSU careers. Brice Calip played in her 89th victory on Sunday to move into 10th place on the school's all-time list, while Emily Gartner (87), Elle Ruffridge (87) and Abby Hipp (85) are all close behind on the winning games played chart.

UNI: Double Duty

Cynthia Wolf recorded her second collegiate double-double within UNI's 78-51 win over Loyola. Wolf scored all of her 13 points within the first half on near-perfect shooting (6-of-7) and finished the game with 12 rebounds.

SIU: Sycamore Sweep

The Salukis swept the Indiana State Sycamores over the weekend and have now won eight-straight games at the Hulman Center. Southern did so in stellar fashion as it shot over 50-percent from the field in each of its two wins. It marked the first time since Jan. 4-6, 2007 that SIU has made over half of its shots in back-to-back games. Southern also set season-bests in three-pointers made (10), three-point field goal percentage (52.6%), assists (24) and points (84) during its two wins.

VALPO: Knocking Down Triples

Valpo rebounded from Friday's loss to Evansville with a 15-point win on Saturday, thanks in large part to connecting on 14 triples in the victory. Valpo has now connected on 14 or more 3-pointers in a game 17 times in program history, eight of which have come in the three-year tenure of head coach Mary Evans.

Climbing the Chart

Bradley senior Gabi Haack moved up to No. 8 in MVC history with 262 career triples after adding three to her total over the weekend. Haack passed Creighton's Kelsey Woodard and UNI's Jacqui Kalin and now sits alongside Missouri State's Jaleshia Roberson. Haack enters the week five away from the league's Top 5.

MVC Career Three-Pointers

- 294 - Dayna Finch, Creighton.....2001-04
- 277 - Rishonda Napier, Southern Illinois.....2014-17
- 276 - Brittany Schoen, Indiana State.....2008-12
- 271 - Kari Koch, Missouri State.....2002-06
- 266 - Lindsay Whorton, Drake.....2004-08
- 265 - Jenni Lingor, Missouri State.....2002-05
- 263 - Kelsey Luna, Indiana State.....2006-10
- 262 - Jaleshia Roberson, Missouri State.....2008-12
- 262 - Gabi Haack, Bradley.....2017-present**
- 261 - Kelsey Woodard, Creighton.....2007-11
- 261 - Jacqui Kalin, UNI.....2007-10; 2012-13

1,000-Point Club

The Valley has seven active players in the 1,000-point club.

Current MVC Players in 1,000-Point Club

1,516 - Gabi Haack, Bradley
1,412 - Makenzie Silvey, Southern Illinois
1,295 - Karli Rucker, UNI
1,273 - Lasha Petree, Bradley
1,241 - Brice Calip, Missouri State
1,057 - Abby Brockmeyer, Southern Illinois
1,054 - Megan Maahs, UNI

Baranczyk Sets Drake Mark

Drake head coach Jennie Baranczyk surpassed Lisa Bluder for the most Valley wins in Drake history with a 75-46 win at Loyola. She passed UNI's Tony DiCecco and into sixth place on The Valley chart with a 68-64 win over the Ramblers.

MOST COACHING WINS (MVC GAMES)

Name, School (Years)	No.
Cheryl Burnett, Missouri State (1988-02)	201
Cindy Scott, Southern Illinois (1983-98)	199
Jill Hutchison, Illinois State (1983-99)	170
Tanya Warren, UNI (2008-present)	160
Jim Flanery, Creighton (2003-13)	131
Jennie Baranczyk, Drake (2013-present)	120
Tony DiCecco, UNI (1996-07)	117
Lisa Bluder, Drake (1991-00)	116

Warren Joins Elite Club

Tanya Warren claimed her 250th career win as UNI's head coach with a win over Indiana State. Warren became the fourth coach in conference women's basketball history to join the league's official 250-Win Club.

Coch, School, Years	Wins
Cindy Scott, Southern Illinois (1983-98)	353
Cheryl Burnett, Missouri State (1988-02)	319
Jill Hutchison, Illinois State (1983-99)	277
Tanya Warren, UNI (2008-present)	253

Top Five Finishes

UNI is the only Valley team to have finished in the top-five of the league standings for the past 11 seasons. Below is a list of top-five finishes over the last 11 seasons.

Top-Five MVC Finishes, Last 10 Seasons

UNI - 11 (10, 11, 12, 13, 14, 15, 16, 17, 18, 19, 20)
MSU - 9 (10, 11, 12, 15, 16, 17, 18, 19, 20)
Drake - 8 (12, 14, 15, 16, 17, 18, 19, 20)
Illinois State - 6 (10, 11, 12, 13, 19, 20)
Southern Illinois - 4 (15, 16, 17, 18)
Bradley - 3 (10, 19, 20)
Indiana State - 3 (13, 14, 18)
Loyola - 1 (16)
Evansville - 1 (14)

Power Five Wins

The MVC secured five wins over Power Five programs during the shortened non-conference schedule. The Valley registered a 5-9 vs. Power Five teams after going 9-12 in 2019-20. The Valley went 4-4 vs. the Big Ten, 1-1 vs. the SEC, 0-3 vs. the Big 12 and 0-1 vs. the ACC. Missouri State and Valpo each had two wins, while Drake had the other.

Polling

Missouri State moved up to No. 23 in this week's AP Top 25 Poll. MSU moved up to No. 20 in the USA Today Coaches Top 25 poll (Feb. 16), marking its 30th-straight appearance in the poll.

Top 25 Success

The Valley finished non-conference play 2-2 vs. AP Top 25 Teams this season, with Missouri State beating #12 Maryland in the season opener and UNI besting #22 South Dakota State.

The last time The Valley had a pair of AP Top 25 wins during the non-conference portion of the season was back in 2002 when Drake beat No. 18 Iowa State and UNI beat No. 24 Iowa State.

Naismith Award Watch List

Bradley junior guard Lasha Petree has been named to the 2021 Women's Jersey Mike's Naismith Trophy Watch List according to an announcement by the Atlanta Tipoff Club. The preseason Watch List included 50 individuals from 11 conferences with Petree the lone representative from the MVC. The midseason 30 team will be announced in early February. The competition will be narrowed down to 10 national semifinalists on March 2, 2021, and four finalists will be named on March 19, 2021. The winner of the 2021 Jersey Mike's Naismith Trophy for Women's Player of the Year will be announced on April 3, 2021.

Hammond Award Watch List

Missouri State junior forward Jasmine Franklin was named to the preseason watch list for the 2021 Becky Hammon Mid-Major Player of the Year Award presented by Her Hoop Stats. The second player in school history to reach 500 career rebounds as a sophomore, the Fayetteville, Ark., native had the 11th-highest defensive rebounding rate in the nation last season and ranked in the top 10% nationally in steals and blocks according to advanced metrics provided by Her Hoop Stats. In January, 15 players will be named to the midseason watch list.

Title Town

The league has had nine different regular-season champions in the past 14 seasons (SIU-2007, DU/UE/ILS-2008, ILS-2009, ILS-2010, UNI-2011; MSU-2012; WSU/CU-2013; INS/WSU-2014; WSU-2015; UNI-2016; DU-2017; DU-2018; DU-2019; MSU-2020). Bradley, Loyola and Valparaiso are the only league teams not to have won a regular-season MVC championship.

Postseason League

The MVC has seen an average of four league teams participate in postseason play in the last 21 seasons where postseason action took place, including three teams reaching postseason play in 2018-19. Before the 2019-20 season was cut short due to COVID-19, the MVC was in position to send 5 or 6 teams to postseason play. The Valley has earned multiple NCAA Tournament bids in 12 different seasons, including two out of the last three seasons (not counting 2019-20).

Hoops in the Heartland

The Missouri Valley Conference will conduct its 14th neutral site postseason women's basketball tournament when the event takes the hardwood at TaxSlayer Center in the Quad Cities, on Thursday-Sunday, March 11-14, 2021. The MVC Tournament, also known uniquely as "Hoops in the Heartland" to Valley fans, will be played at TaxSlayer Center in the Quad Cities for the sixth-straight year, despite last year's event being cancelled due to COVID-19.

All nine games of the 2021 MVC Women's Basketball Tournament will be available live on ESPN+ via the ESPN app. Launched in April 2018, ESPN+ has grown to more than 10.3 million subscribers. Fans subscribe to ESPN+ for just \$5.99 a month (or \$49.99 per year) at ESPN.com, ESPNplus.com or on the ESPN App (mobile and connected devices).

Streaks in League Play

Missouri State will put its 14 game win streak vs. Loyola on the line this weekend as the Lady Bears host the Ramblers. The Ramblers last win over the Lady Bears was on Jan. 12, 2014 (63-61).

UNI will put its 13 game win streak vs. Evansville on the line this weekend as well. The Aces last win vs. UNI was on Jan. 8, 2014 (59-50)

Below is a look at the longest winning streaks against an MVC opponent:

Longest Winning Streaks vs. MVC Opponent

27 - Southern Illinois over Bradley (1983-95)
25 - Missouri State over UNI (1989-00)
21 - Illinois State over UNI (1984-94)*
20 - UNI over Wichita State (2000-09)
20 - Drake over Southern Illinois (1997-05)
19 - Drake over Bradley (1996-04)
19 - Missouri State over Southern Illinois (1997-06)
19 - Missouri State over Wichita State (1988-97)
17 - Drake over UNI (1987-95)
17 - Southern Illinois over UNI (1984-92)
16 - UNI over Bradley (2012-20)
16 - Missouri State over Bradley (1992-97)
15 - Illinois State over Bradley (2006-13)
15 - Drake over Illinois State (2014-21)
15 - Drake over Loyola (2014-present)
*ILS won 22-straight in the series

Longest Current Winning Streaks vs. MVC Opponent

15 - Drake over Loyola (2014-present)
14 - Missouri State over Loyola (2014-present)
14 - Missouri State over Indiana State (2015-present)
13 - UNI over Evansville (2015-present)
13 - Drake over Evansville (2016-present)

#THEVALLEYRUNSDEEP



2020-21 Missouri Valley Conference
CONFERENCE BASKETBALL STATISTICS
Through games of Feb 22, 2021 (All games)



SCORING OFFENSE	G	W-L	Pts	Avg/G
1. Drake	22	12-10	1702	77.4
2. Northern Iowa	20	10-10	1426	71.3
3. Bradley	22	12-10	1553	70.6
4. Missouri State	17	15-2	1198	70.5
5. Illinois State	17	12-6	1183	69.6
6. Valparaiso	18	8-10	1148	63.8
7. Loyola	17	10-7	1030	60.6
8. Indiana State	16	4-12	967	60.4
9. Southern Illinois	18	8-10	1077	59.8
10. Evansville	17	6-12	959	56.4

SCORING DEFENSE	G	Pts	Avg/G
1. Loyola	17	998	58.7
2. Missouri State	17	1001	58.9
3. Illinois State	17	1018	59.9
4. Southern Illinois	18	1111	61.7
5. Valparaiso	18	1168	64.9
6. Bradley	22	1439	65.4
7. Evansville	17	1147	67.5
8. Drake	22	1517	69.0
9. Northern Iowa	20	1404	70.2
10. Indiana State	16	1190	74.4

SCORING MARGIN	G	Offense	Defense	Margin
1. Missouri State	17	70.5	58.9	+11.6
2. Illinois State	17	69.6	59.9	+9.7
3. Drake	22	77.4	69.0	+8.4
4. Bradley	22	70.6	65.4	+5.2
5. Loyola	17	60.6	58.7	+1.9
6. Northern Iowa	20	71.3	70.2	+1.1
7. Valparaiso	18	63.8	64.9	-1.1
8. Southern Illinois	18	59.8	61.7	-1.9
9. Evansville	17	56.4	67.5	-11.1
10. Indiana State	16	60.4	74.4	-13.9

FREE THROW PCT	G	FTM	FTA	Pct.
1. Northern Iowa	20	294	387	.760
2. Drake	22	251	342	.734
3. Loyola	17	201	276	.728
4. Bradley	22	257	356	.722
5. Valparaiso	18	217	302	.719
6. Illinois State	17	251	358	.701
7. Missouri State	17	205	295	.695
8. Evansville	17	231	348	.664
9. Southern Illinois	18	157	242	.649
10. Indiana State	16	169	263	.643

FIELD GOAL PERCENTAGE	G	FGM	FGA	Pct.
1. Drake	22	632	1316	.480
2. Illinois State	17	410	936	.438
3. Bradley	22	567	1337	.424
4. Northern Iowa	20	485	1163	.417
5. Missouri State	17	451	1083	.416
6. Southern Illinois	18	404	1013	.399
7. Loyola	17	373	942	.396
8. Valparaiso	18	385	1021	.377
9. Evansville	17	325	865	.376
10. Indiana State	16	360	963	.374

FIELD GOAL PCT DEFENSE	G	FGM	FGA	Pct.
1. Illinois State	17	358	958	.374
2. Missouri State	17	347	926	.375
3. Bradley	22	490	1296	.378
4. Evansville	17	416	1097	.379
5. Loyola	17	364	944	.386
6. Valparaiso	18	405	1028	.394
7. Drake	22	558	1379	.405
8. Northern Iowa	20	513	1226	.418
9. Southern Illinois	18	413	921	.448
10. Indiana State	16	430	917	.469

3-POINT FG PCT	G	3FGM	3FGA	Pct.
1. Drake	22	187	498	.376
2. Illinois State	17	112	301	.372
3. Bradley	22	162	483	.335
4. Northern Iowa	20	162	492	.329
5. Missouri State	17	91	300	.303
6. Valparaiso	18	161	531	.303
7. Southern Illinois	18	112	373	.300
8. Loyola	17	83	283	.293
9. Evansville	17	78	275	.284
10. Indiana State	16	78	279	.280

3-POINT FG PCT DEFENSE	G	3FGM	3FGA	Pct.
1. Loyola	17	98	366	.268
2. Valparaiso	18	88	318	.277
3. Missouri State	17	98	348	.282
4. Evansville	17	149	523	.285
5. Illinois State	17	106	363	.292
6. Northern Iowa	20	101	313	.323
7. Drake	22	156	478	.326
8. Southern Illinois	18	87	264	.330
9. Bradley	22	162	490	.331
10. Indiana State	16	120	335	.358

REBOUNDING OFFENSE	G	Rebounds	Avg/G
1. Missouri State	17	712	41.9
2. Bradley	22	858	39.0
3. Drake	22	848	38.5
4. Loyola	17	630	37.1
5. Illinois State	17	624	36.7
6. Northern Iowa	20	722	36.1
7. Evansville	17	613	36.1
8. Indiana State	16	576	36.0
9. Southern Illinois	18	623	34.6
10. Valparaiso	18	581	32.3

REBOUNDING DEFENSE	G	Rebounds	Avg/G
1. Southern Illinois	18	584	32.4
2. Missouri State	17	556	32.7
3. Illinois State	17	568	33.4
4. Drake	22	745	33.9
5. Loyola	17	591	34.8
6. Northern Iowa	20	739	37.0
7. Bradley	22	818	37.2
8. Indiana State	16	598	37.4
9. Evansville	17	688	40.5
10. Valparaiso	18	750	41.7



2020-21 Missouri Valley Conference
CONFERENCE BASKETBALL STATISTICS
Through games of Feb 22, 2021 (All games)



REBOUNDING MARGIN	G	Team	Avg.	Opp.	Avg. Margin
1. Missouri State	17	712	41.9	556	32.7 +9.2
2. Drake	22	848	38.5	745	33.9 +4.7
3. Illinois State	17	624	36.7	568	33.4 +3.3
4. Loyola	17	630	37.1	591	34.8 +2.3
5. Southern Illinois	18	623	34.6	584	32.4 +2.2
6. Bradley	22	858	39.0	818	37.2 +1.8
7. Northern Iowa	20	722	36.1	739	37.0 -0.9
8. Indiana State	16	576	36.0	598	37.4 -1.4
9. Evansville	17	613	36.1	688	40.5 -4.4
10. Valparaiso	18	581	32.3	750	41.7 -9.4

ASSISTS	G	No.	Avg/G
1. Drake	22	454	20.6
2. Missouri State	17	259	15.2
3. Northern Iowa	20	285	14.3
4. Southern Illinois	18	252	14.0
5. Bradley	22	306	13.9
6. Valparaiso	18	220	12.2
7. Indiana State	16	194	12.1
8. Loyola	17	196	11.5
9. Illinois State	17	186	10.9
10. Evansville	17	183	10.8

TURNOVER MARGIN	G	Team	Avg.	Opp.	Avg. Margin
1. Missouri State	17	232	13.6	290	17.1 +3.4
2. Valparaiso	18	279	15.5	328	18.2 +2.7
3. Illinois State	17	260	15.3	284	16.7 +1.4
4. Bradley	22	285	13.0	304	13.8 +0.9
5. Southern Illinois	18	252	14.0	258	14.3 +0.3
6. Loyola	17	266	15.6	261	15.4 -0.3
7. Northern Iowa	20	317	15.9	308	15.4 -0.5
8. Indiana State	16	254	15.9	245	15.3 -0.6
9. Drake	22	404	18.4	345	15.7 -2.7
10. Evansville	17	342	20.1	246	14.5 -5.6

OFFENSIVE REBOUNDS	G	No.	Avg/G
1. Missouri State	17	239	14.1
2. Indiana State	16	208	13.0
3. Southern Illinois	18	221	12.3
4. Bradley	22	242	11.0
5. Loyola	17	182	10.7
6. Drake	22	232	10.5
7. Northern Iowa	20	206	10.3
8. Evansville	17	141	8.3
9. Illinois State	17	138	8.1
10. Valparaiso	18	138	7.7

DEFENSIVE REB PCT.	G	D-Reb	Opp. OR	D-Reb%
1. Missouri State	17	473	128	.787
2. Illinois State	17	486	144	.771
3. Southern Illinois	18	402	150	.728
4. Loyola	17	448	168	.727
5. Bradley	22	616	246	.715
6. Drake	22	616	254	.708
7. Indiana State	16	368	163	.693
8. Northern Iowa	20	516	234	.688
9. Valparaiso	18	443	221	.667
10. Evansville	17	472	238	.665

BLOCKED SHOTS	G	No.	Avg/G
1. Bradley	22	110	5.0
2. Missouri State	17	77	4.5
3. Drake	22	93	4.2
4. Northern Iowa	20	71	3.6
5. Valparaiso	18	61	3.4
6. Illinois State	17	55	3.2
7. Evansville	17	51	3.0
8. Loyola	17	47	2.8
9. Indiana State	16	36	2.3
10. Southern Illinois	18	36	2.0

STEALS	G	No.	Avg/G
1. Missouri State	17	165	9.7
2. Valparaiso	18	169	9.4
3. Indiana State	16	133	8.3
4. Drake	22	181	8.2
5. Illinois State	17	136	8.0
6. Northern Iowa	20	145	7.3
7. Southern Illinois	18	130	7.2
8. Loyola	17	120	7.1
9. Evansville	17	115	6.8
10. Bradley	22	148	6.7

ASSIST/TURNOVER RATIO	G	Ast.	Avg.	T/O	Avg.	Ratio
1. Drake	22	454	20.6	404	18.4	1.1
2. Missouri State	17	259	15.2	232	13.6	1.1
3. Bradley	22	306	13.9	285	13.0	1.1
4. Southern Illinois	18	252	14.0	252	14.0	1.0
5. Northern Iowa	20	285	14.3	317	15.9	0.9
6. Valparaiso	18	220	12.2	279	15.5	0.8
7. Indiana State	16	194	12.1	254	15.9	0.8
8. Loyola	17	196	11.5	266	15.6	0.7
9. Illinois State	17	186	10.9	260	15.3	0.7
10. Evansville	17	183	10.8	342	20.1	0.5

DEFENSIVE REBOUNDS	G	No.	Avg/G
1. Illinois State	17	486	28.6
2. Bradley	22	616	28.0
Drake	22	616	28.0
4. Missouri State	17	473	27.8
5. Evansville	17	472	27.8
6. Loyola	17	448	26.4
7. Northern Iowa	20	516	25.8
8. Valparaiso	18	443	24.6
9. Indiana State	16	368	23.0
10. Southern Illinois	18	402	22.3

OFFENSIVE REB PCT.	G	O-Reb	Opp. DR	O-Reb%
1. Missouri State	17	239	428	.358
2. Southern Illinois	18	221	434	.337
3. Indiana State	16	208	435	.323
4. Drake	22	232	491	.321
5. Loyola	17	182	423	.301
6. Bradley	22	242	572	.297
7. Northern Iowa	20	206	505	.290
8. Illinois State	17	138	424	.246
9. Evansville	17	141	450	.239
10. Valparaiso	18	138	529	.207



2020-21 Missouri Valley Conference
CONFERENCE BASKETBALL STATISTICS
Through games of Feb 22, 2021 (All games)



3-POINT FG MADE	G	No.	Avg/G
1. Valparaiso	18	161	8.9
2. Drake	22	187	8.5
3. Northern Iowa	20	162	8.1
4. Bradley	22	162	7.4
5. Illinois State	17	112	6.6
6. Southern Illinois	18	112	6.2
7. Missouri State	17	91	5.4
8. Loyola	17	83	4.9
9. Indiana State	16	78	4.9
10. Evansville	17	78	4.6



2020-21 Missouri Valley Conference
CONFERENCE BASKETBALL STATISTICS
Through games of Feb 22, 2021 (All games)



Team	Conference	Pct.	PF	PA	Overall	Pct.	PF	PA	Current unbeaten streak
Missouri State	11-0	1.000	69.1	59.6	15-2	.882	70.5	58.9	Missouri State -- 11
Drake	10-5	.667	76.7	62.9	12-10	.545	77.4	69.0	Illinois State -- 2
Loyola	8-5	.615	57.6	56.2	10-7	.588	60.6	58.7	Southern Illinois -- 2
Illinois State	9-6	.600	62.1	58.1	12-6	.667	69.6	59.9	Loyola -- 1
Northern Iowa	7-6	.538	72.3	68.5	10-10	.500	71.3	70.2	Valparaiso -- 1
Bradley	8-7	.533	69.2	64.4	12-10	.545	70.6	65.4	
Southern Illinois	5-8	.385	58.8	61.1	8-10	.444	59.8	61.7	
Valparaiso	4-7	.364	61.8	63.8	8-10	.444	63.8	64.9	
Evansville	2-11	.154	46.6	63.8	6-12	.333	56.4	67.5	
Indiana State	1-10	.091	55.2	76.4	4-12	.250	60.4	74.4	

TEAM SUMMARIES	G	PF-PA	Avg score	Margin	FG-FGA	Pct.	3FG-FGA	Pct.	FT-FTA	Pct.	RebF	RebA	Margin
Bradley	22	1553-1439	70.6-65.4	+5.2	567-1337	.424	162-483	.335	257-356	.722	858	818	+1.8
Drake	22	1702-1517	77.4-69.0	+8.4	632-1316	.480	187-498	.376	251-342	.734	848	745	+4.7
Evansville	17	959-1147	56.4-67.5	-11.1	325-865	.376	78-275	.284	231-348	.664	613	688	-4.4
Illinois State	17	1183-1018	69.6-59.9	+9.7	410-936	.438	112-301	.372	251-358	.701	624	568	+3.3
Indiana State	16	967-1190	60.4-74.4	-13.9	360-963	.374	78-279	.280	169-263	.643	576	598	-1.4
Loyola	17	1030-998	60.6-58.7	+1.9	373-942	.396	83-283	.293	201-276	.728	630	591	+2.3
Missouri State	17	1198-1001	70.5-58.9	+11.6	451-1083	.416	91-300	.303	205-295	.695	712	556	+9.2
Northern Iowa	20	1426-1404	71.3-70.2	+1.1	485-1163	.417	162-492	.329	294-387	.760	722	739	-0.9
Southern Illinois	18	1077-1111	59.8-61.7	-1.9	404-1013	.399	112-373	.300	157-242	.649	623	584	+2.2
Valparaiso	18	1148-1168	63.8-64.9	-1.1	385-1021	.377	161-531	.303	217-302	.719	581	750	-9.4

ATTENDANCE	Home	Average	Away	Average	Neutral	Average	Total	Average
Bradley	11-0	0	11-3514	319	0-0	0	22-3514	160
Drake	8-2119	265	14-5741	410	0-0	0	22-7860	357
Evansville	11-0	0	6-379	63	0-0	0	17-379	22
Illinois State	10-0	0	7-1170	167	0-0	0	17-1170	69
Indiana State	8-615	77	8-906	113	0-0	0	16-1521	95
Loyola	8-0	0	9-930	103	0-0	0	17-930	55
Missouri State	7-9248	1321	8-2849	356	2-0	0	17-12097	712
Northern Iowa	9-3517	391	11-1306	119	0-0	0	20-4823	241
Southern Illinois	8-0	0	10-3432	343	0-0	0	18-3432	191
Valparaiso	11-847	77	7-468	67	0-0	0	18-1315	73
Totals	91-16346	180	91-20695	227	2-0	0	184-37041	201



2020-21 Missouri Valley Conference
INDIVIDUAL BASKETBALL STATISTICS
Through games of Feb 22, 2021 (All games)



To be ranked, a player must appear in at least 75.0% of their team's games.

SCORING								REBOUNDING							
	Cl	G	FG	3FG	FT	Pts	Avg/G		Cl	G	Off	Def	Total	Avg/G	
1. Petree, Lasha-BRAD	Jr	22	136	43	83	398	18.1	1. Franklin,Jasmine-MSU	Jr	17	47	109	156	9.2	
2. Berg,Grace-DU	So	22	143	14	65	365	16.6	2. Feit, Abby-UE	So	17	17	113	130	7.6	
3. Haack, Gabi-BRAD	Sr	22	115	56	69	355	16.1	3. McChristine,Jamyra-INS	Sr	16	58	56	114	7.1	
4. Calip,Brice-MSU	Sr	17	76	15	80	247	14.5	4. Haack, Gabi-BRAD	Sr	22	37	112	149	6.8	
5. Feit, Abby-UE	So	17	81	23	61	246	14.5	5. Day, Allison-LUC	Jr	17	41	68	109	6.4	
6. Silvey, Makenzie-SIU	Sr	16	92	29	14	227	14.2	6. Redmond, Juliunn-ILS	Sr	17	20	88	108	6.4	
7. Redmond, Juliunn-ILS	Sr	17	88	18	45	239	14.1	7. Burich,Monica-DU	Sr	22	38	95	133	6.0	
8. Weinman, Carie-Valpo	Jr	18	91	34	34	250	13.9	8. White, Grace-Valpo	Sr	15	28	62	90	6.0	
9. Frederick, Shay-Valpo	Jr	18	73	37	60	243	13.5	9. GUNNELS, Bre-UNI	Sr	20	28	91	119	6.0	
10. RUCKER, Karli-UNI	Sr	20	99	23	47	268	13.4	10. Bair,Maggie-DU	So	17	21	79	100	5.9	
11. Monahan,Maddie-DU	Sr	19	81	32	39	233	12.3	11. Folks,Adrian-INS	So	16	34	60	94	5.9	
12. Collier,Kierra-DU	Jr	18	81	29	23	214	11.9	Wilson, DeAnna-ILS	So	16	28	66	94	5.9	
13. Crompton,Mary-ILS	So	17	64	44	26	198	11.6	13. White, Nyjah-BRAD	Sr	21	30	83	113	5.4	
14. Moore,Terrion-ILS	Jr	17	68	20	34	190	11.2	14. Thurwalker, Sydney-UE	So	15	25	54	79	5.3	
Day, Allison-LUC	Jr	17	72	3	43	190	11.2	15. Hipp,Abby-MSU	Sr	16	38	45	83	5.2	
16. White, Nyjah-BRAD	Sr	21	101	0	32	234	11.1	16. Katcher, Adrianna-SIU	Fr	18	33	60	93	5.2	
17. White, Grace-Valpo	Sr	15	54	15	43	166	11.1	17. Marsh, Emily-BRAD	Sr	18	24	68	92	5.1	
18. Franklin,Jasmine-MSU	Jr	17	71	0	44	186	10.9	18. Wooldridge,Allie-DU	Jr	22	26	86	112	5.1	
19. Rice, Ellie-LUC	Sr	17	65	26	19	175	10.3	19. Rice, Ellie-LUC	Sr	17	11	74	85	5.0	
20. Anderson,Caitlin-INS	So	15	52	0	44	148	9.9	20. Berg,Grace-DU	So	22	33	74	107	4.9	
21. Hipp,Abby-MSU	Sr	16	68	3	15	154	9.6								
22. McChristine,Jamyra-INS	Sr	16	62	0	29	153	9.6								
23. Folks,Adrian-INS	So	16	63	1	25	152	9.5								
24. Morrison, Caitlin-Valpo	Sr	18	61	25	16	163	9.1								
25. Griffin, A'Niah-UE	Jr	13	43	9	21	116	8.9								
26. Ruffridge,Elle-MSU	Sr	17	56	29	10	151	8.9								
27. Walker, Gabby-SIU	Sr	17	57	0	35	149	8.8								
28. McCallister, Payton-SIU	Jr	18	52	30	23	157	8.7								
29. Chandler, Maya-LUC	Fr	17	50	15	33	148	8.7								
30. MAAHS, Megan-UNI	Sr	20	57	9	49	172	8.6								

FIELD GOAL PCT						ASSISTS			
	Cl	G	FGM	FGA	Pct.		Cl	G	No. Avg/G
1. Day, Allison-LUC	Jr	17	72	126	.571	1. Frederick, Shay-Valpo	Jr	18	82 4.6
2. Berg,Grace-DU	So	22	143	263	.544	2. Calip,Brice-MSU	Sr	17	75 4.4
3. Hipp,Abby-MSU	Sr	16	68	132	.515	3. Collier,Kierra-DU	Jr	18	76 4.2
4. Burich,Monica-DU	Sr	22	66	129	.512	4. Newman, Anna-UE	Jr	14	57 4.1
5. Monahan,Maddie-DU	Sr	19	81	163	.497	5. Monahan,Maddie-DU	Sr	19	77 4.1
6. Walker, Gabby-SIU	Sr	17	57	115	.496	6. RUCKER, Karli-UNI	Sr	20	79 4.0
7. Franklin,Jasmine-MSU	Jr	17	71	145	.490	7. White, Nyjah-BRAD	Sr	21	72 3.4
8. Haack, Gabi-BRAD	Sr	22	115	243	.473	8. White, Grace-Valpo	Sr	15	47 3.1
9. Moore,Terrion-ILS	Jr	17	68	146	.466	9. Koenig, Tatum-BRAD	Jr	22	66 3.0
10. Folks,Adrian-INS	So	16	63	138	.457	Saylor,Paige-ILS	Sr	17	51 3.0
11. Anderson,Caitlin-INS	So	15	52	114	.456	11. Wooldridge,Allie-DU	Jr	22	64 2.9
12. Redmond, Juliunn-ILS	Sr	17	88	193	.456	12. Silvey, Makenzie-SIU	Sr	16	44 2.8
13. McChristine,Jamyra-INS	Sr	16	62	137	.453	13. McCallister, Payton-SIU	Jr	18	48 2.7
14. Weinman, Carie-Valpo	Jr	18	91	210	.433	14. Hunter,Marie-INS	Sr	13	34 2.6
15. White, Nyjah-BRAD	Sr	21	101	234	.432	15. Berg,Grace-DU	So	22	55 2.5



2020-21 Missouri Valley Conference
INDIVIDUAL BASKETBALL STATISTICS
Through games of Feb 22, 2021 (All games)



FREE THROW PCT	Cl	G	FTM	FTA	Pct.
1. Monahan, Maddie-DU	Sr	19	39	44	.886
2. MAAHS, Megan-UNI	Sr	20	49	58	.845
3. Calip, Brice-MSU	Sr	17	80	95	.842
4. Berg, Grace-DU	So	22	65	78	.833
5. Petree, Lasha-BRAD	Jr	22	83	100	.830
6. White, Grace-Valpo	Sr	15	43	53	.811
Day, Allison-LUC	Jr	17	43	53	.811
8. RUCKER, Karli-UNI	Sr	20	47	58	.810
9. Wong, Maya-ILS	Fr	16	34	42	.810
10. GUNNELS, Bre-UNI	Sr	20	71	88	.807
11. Redmond, Juliunn-ILS	Sr	17	45	57	.789
12. Haack, Gabi-BRAD	Sr	22	69	88	.784
13. Newman, Anna-UE	Jr	14	47	61	.770
14. Frederick, Shay-Valpo	Jr	18	60	80	.750
15. Feit, Abby-UE	So	17	61	83	.735

3-POINT FG PCT	Cl	G	3FG	FGA	Pct.
1. Crompton, Mary-ILS	So	17	44	98	.449
2. Gueldner, Sarah Beth-DU	So	22	41	94	.436
3. Monahan, Maddie-DU	Sr	19	32	79	.405
4. Haack, Gabi-BRAD	Sr	22	56	144	.389
5. Weinman, Carie-Valpo	Jr	18	34	89	.382
6. KROEGER, Nicole-UNI	Sr	20	27	71	.380
7. Brown, Anna-LUC	So	17	19	50	.380
8. Koenig, Tatum-BRAD	Jr	22	31	82	.378
9. Collier, Kierra-DU	Jr	18	29	77	.377
10. Moore, Terrion-ILS	Jr	17	20	54	.370
11. Frederick, Shay-Valpo	Jr	18	37	100	.370
12. Latu, Essy-INS	Jr	14	24	67	.358
13. Redmond, Juliunn-ILS	Sr	17	18	51	.353
14. Silvey, Makenzie-SIU	Sr	16	29	83	.349
15. Rice, Ellie-LUC	Sr	17	26	76	.342

BLOCKED SHOTS	Cl	G	No.	Avg/G
1. Petree, Lasha-BRAD	Jr	22	50	2.3
2. Bair, Maggie-DU	So	17	31	1.8
3. Feit, Abby-UE	So	17	23	1.4
4. Morrison, Caitlin-Valpo	Sr	18	22	1.2
5. Jackson, Abigayle-MSU	Sr	17	20	1.2
6. White, Grace-Valpo	Sr	15	16	1.1
7. Franklin, Jasmine-MSU	Jr	17	17	1.0
8. Bullman, Kate-ILS	Fr	17	16	0.9
Tanin, Sitori-LUC	Fr	17	16	0.9
10. Marsh, Emily-BRAD	Sr	18	16	0.9
11. GUNNELS, Bre-UNI	Sr	20	15	0.8
Wolf, Cynthia-UNI	Jr	20	15	0.8
13. Burich, Monica-DU	Sr	22	16	0.7
14. Poland, Jada-UE	Sr	17	12	0.7
15. MAAHS, Megan-UNI	Sr	20	14	0.7

STEALS	Cl	G	No.	Avg/G
1. Weinman, Carie-Valpo	Jr	18	48	2.7
2. Franklin, Jasmine-MSU	Jr	17	42	2.5
3. Calip, Brice-MSU	Sr	17	41	2.4
4. White, Grace-Valpo	Sr	15	31	2.1
5. Moore, Terrion-ILS	Jr	17	34	2.0
6. McChristine, Jamyra-INS	Sr	16	26	1.6
7. McCallister, Payton-SIU	Jr	18	29	1.6
8. Anderson, Caitlin-INS	So	15	24	1.6
9. Berg, Grace-DU	So	22	33	1.5
10. Feit, Abby-UE	So	17	25	1.5
11. Petree, Lasha-BRAD	Jr	22	32	1.5
12. White, Nyjah-BRAD	Sr	21	30	1.4
13. Redmond, Juliunn-ILS	Sr	17	23	1.4
14. Frederick, Shay-Valpo	Jr	18	24	1.3
15. Hunter, Marie-INS	Sr	13	17	1.3

3-POINT FG MADE	Cl	G	3FG	Avg/G
1. Crompton, Mary-ILS	So	17	44	2.6
2. Haack, Gabi-BRAD	Sr	22	56	2.5
3. Frederick, Shay-Valpo	Jr	18	37	2.1
4. Petree, Lasha-BRAD	Jr	22	43	2.0
5. Weinman, Carie-Valpo	Jr	18	34	1.9
6. Gueldner, Sarah Beth-DU	So	22	41	1.9
7. Silvey, Makenzie-SIU	Sr	16	29	1.8
8. Latu, Essy-INS	Jr	14	24	1.7
9. Ruffridge, Elle-MSU	Sr	17	29	1.7
10. Monahan, Maddie-DU	Sr	19	32	1.7
11. McCallister, Payton-SIU	Jr	18	30	1.7
12. Collier, Kierra-DU	Jr	18	29	1.6
13. Rice, Ellie-LUC	Sr	17	26	1.5
14. Pitzer, Sommer-INS	So	14	20	1.4
15. Koenig, Tatum-BRAD	Jr	22	31	1.4

ASSIST/TURNOVER RATIO	Cl	G	Ast.	T/O	Ratio
1. Calip, Brice-MSU	Sr	17	75	26	2.9
2. Koenig, Tatum-BRAD	Jr	22	66	29	2.3
3. Monahan, Maddie-DU	Sr	19	77	42	1.8
4. Saylor, Paige-ILS	Sr	17	51	29	1.8
5. Frederick, Shay-Valpo	Jr	18	82	61	1.3
6. RUCKER, Karli-UNI	Sr	20	79	60	1.3
7. Collier, Kierra-DU	Jr	18	76	59	1.3
8. White, Nyjah-BRAD	Sr	21	72	56	1.3
9. Newman, Anna-UE	Jr	14	57	49	1.2
10. White, Grace-Valpo	Sr	15	47	54	0.9



2020-21 Missouri Valley Conference
INDIVIDUAL BASKETBALL STATISTICS
Through games of Feb 22, 2021 (All games)



OFFENSIVE REBOUNDS	Cl	G	No.	Avg/G
1. McChristine, Jamyra-INS	Sr	16	58	3.6
2. Franklin, Jasmine-MSU	Jr	17	47	2.8
3. Day, Allison-LUC	Jr	17	41	2.4
4. Hipp, Abby-MSU	Sr	16	38	2.4
5. Wilson, Sydney-MSU	Jr	17	38	2.2
6. Folks, Adrian-INS	So	16	34	2.1
7. Walker, Gabby-SIU	Sr	17	35	2.1
8. White, Grace-Valpo	Sr	15	28	1.9
9. Katcher, Adrianna-SIU	Fr	18	33	1.8
10. Wilson, DeAnna-ILS	So	16	28	1.8
11. Burich, Monica-DU	Sr	22	38	1.7
12. Haack, Gabi-BRAD	Sr	22	37	1.7
13. Thurwalker, Sydney-UE	So	15	25	1.7
14. Glanton, Mya-INS	Fr	14	22	1.6
15. Wolf, Cynthia-UNI	Jr	20	31	1.6

DEFENSIVE REBOUNDS	Cl	G	No.	Avg/G
1. Feit, Abby-UE	So	17	113	6.6
2. Franklin, Jasmine-MSU	Jr	17	109	6.4
3. Redmond, Juliunn-ILS	Sr	17	88	5.2
4. Haack, Gabi-BRAD	Sr	22	112	5.1
5. Bair, Maggie-DU	So	17	79	4.6
6. GUNNELS, Bre-UNI	Sr	20	91	4.6
7. Rice, Ellie-LUC	Sr	17	74	4.4
8. Burich, Monica-DU	Sr	22	95	4.3
9. White, Grace-Valpo	Sr	15	62	4.1
10. Wilson, DeAnna-ILS	So	16	66	4.1
11. Day, Allison-LUC	Jr	17	68	4.0
12. White, Nyjah-BRAD	Sr	21	83	4.0
13. Wooldridge, Allie-DU	Jr	22	86	3.9
14. Calip, Brice-MSU	Sr	17	65	3.8
15. Marsh, Emily-BRAD	Sr	18	68	3.8

MINUTES PLAYED	Cl	G	No.	Avg/G
1. Frederick, Shay-Valpo	Jr	18	640	35.6
2. Feit, Abby-UE	So	17	579	34.1
3. Haack, Gabi-BRAD	Sr	22	749	34.0
4. Weinman, Carrie-Valpo	Jr	18	602	33.4
5. Koenig, Tatum-BRAD	Jr	22	731	33.2
6. McCallister, Payton-SIU	Jr	18	588	32.7
7. Calip, Brice-MSU	Sr	17	546	32.1
8. Silvey, Makenzie-SIU	Sr	16	513	32.1
9. White, Grace-Valpo	Sr	15	479	31.9
10. Rice, Ellie-LUC	Sr	17	540	31.8
11. Saylor, Paige-ILS	Sr	17	533	31.4
12. Petree, Lasha-BRAD	Jr	22	688	31.3
13. Crompton, Mary-ILS	So	17	531	31.2
14. Newman, Anna-UE	Jr	14	436	31.1
15. Redmond, Juliunn-ILS	Sr	17	523	30.8
16. RUCKER, Karli-UNI	Sr	20	608	30.4
17. Wilson, Sydney-MSU	Jr	17	508	29.9
18. Moore, Terrion-ILS	Jr	17	479	28.2
19. Pitzer, Sommer-INS	So	14	390	27.9
20. Berg, Grace-DU	So	22	612	27.8
21. Galanopoulos, Sam-LUC	So	17	472	27.8
22. Folks, Adrian-INS	So	16	441	27.6
23. White, Nyjah-BRAD	Sr	21	571	27.2
24. Monahan, Maddie-DU	Sr	19	511	26.9
25. Day, Allison-LUC	Jr	17	457	26.9
26. Chandler, Maya-LUC	Fr	17	453	26.6
27. Link, Caitlin-SIU	Jr	18	477	26.5
28. Poland, Jada-UE	Sr	17	450	26.5
29. Collier, Kierra-DU	Jr	18	469	26.1
30. KROEGER, Nicole-UNI	Sr	20	521	26.1



2020-21 Missouri Valley Conference
INDIVIDUAL BASKETBALL STATISTICS
Through games of Feb 22, 2021 (All games)



TEAM IDENTIFICATION	Team ID
Bradley	BRAD
Drake	DU
Evansville	UE
Illinois State	ILS
Indiana State	INS
Loyola	LUC
Missouri State	MSU
Northern Iowa	UNI
Southern Illinois	SIU
Valparaiso	VALPO



2020-21 Missouri Valley Conference
CONFERENCE BASKETBALL STATISTICS
Through games of Feb 22, 2021 (Conference games only)



SCORING OFFENSE	G	W-L	Pts	Avg/G
1. Drake	15	10-5	1150	76.7
2. Northern Iowa	13	7-6	940	72.3
3. Bradley	15	8-7	1038	69.2
4. Missouri State	11	11-0	760	69.1
5. Illinois State	14	9-6	931	66.5
6. Valparaiso	11	4-7	680	61.8
7. Southern Illinois	13	5-8	764	58.8
8. Loyola	13	8-5	749	57.6
9. Indiana State	11	1-10	607	55.2
10. Evansville	12	2-11	606	50.5

SCORING DEFENSE	G	Pts	Avg/G
1. Loyola	13	731	56.2
2. Missouri State	11	656	59.6
3. Southern Illinois	13	794	61.1
4. Illinois State	14	872	62.3
5. Drake	15	944	62.9
6. Valparaiso	11	702	63.8
7. Bradley	15	966	64.4
8. Northern Iowa	13	891	68.5
9. Evansville	12	829	69.1
10. Indiana State	11	840	76.4

SCORING MARGIN	G	Offense	Defense	Margin
1. Drake	15	76.7	62.9	+13.7
2. Missouri State	11	69.1	59.6	+9.5
3. Bradley	15	69.2	64.4	+4.8
4. Illinois State	14	66.5	62.3	+4.2
5. Northern Iowa	13	72.3	68.5	+3.8
6. Loyola	13	57.6	56.2	+1.4
7. Valparaiso	11	61.8	63.8	-2.0
8. Southern Illinois	13	58.8	61.1	-2.3
9. Evansville	12	50.5	69.1	-18.6
10. Indiana State	11	55.2	76.4	-21.2

FREE THROW PCT	G	FTM	FTA	Pct.
1. Northern Iowa	13	188	238	.790
2. Valparaiso	11	130	175	.743
3. Bradley	15	163	226	.721
4. Illinois State	14	198	275	.720
5. Missouri State	11	133	185	.719
6. Drake	15	172	241	.714
7. Loyola	13	143	206	.694
8. Evansville	12	151	222	.680
9. Southern Illinois	13	102	158	.646
10. Indiana State	11	115	183	.628

FIELD GOAL PERCENTAGE	G	FGM	FGA	Pct.
1. Drake	15	426	851	.501
2. Northern Iowa	13	322	745	.432
3. Illinois State	14	326	764	.427
4. Bradley	15	384	907	.423
5. Missouri State	11	285	681	.419
6. Southern Illinois	13	289	713	.405
7. Loyola	13	271	711	.381
8. Valparaiso	11	225	625	.360
9. Indiana State	11	224	646	.347
10. Evansville	12	206	613	.336

FIELD GOAL PCT DEFENSE	G	FGM	FGA	Pct.
1. Drake	15	349	929	.376
2. Loyola	13	265	685	.387
3. Illinois State	14	304	780	.390
4. Bradley	15	333	851	.391
5. Missouri State	11	232	585	.397
6. Evansville	12	300	756	.397
7. Valparaiso	11	244	605	.403
8. Northern Iowa	13	330	792	.417
9. Southern Illinois	13	292	652	.448
10. Indiana State	11	309	621	.498

3-POINT FG PCT	G	3FGM	3FGA	Pct.
1. Drake	15	126	318	.396
2. Illinois State	14	81	237	.342
3. Bradley	15	107	323	.331
4. Northern Iowa	13	108	329	.328
5. Southern Illinois	13	84	258	.326
6. Missouri State	11	57	187	.305
7. Valparaiso	11	100	334	.299
8. Loyola	13	64	214	.299
9. Indiana State	11	44	182	.242
10. Evansville	12	43	200	.215

3-POINT FG PCT DEFENSE	G	3FGM	3FGA	Pct.
1. Loyola	13	72	265	.272
2. Valparaiso	11	55	189	.291
3. Drake	15	98	324	.302
4. Illinois State	14	90	294	.306
5. Missouri State	11	67	216	.310
6. Evansville	12	109	348	.313
7. Southern Illinois	13	61	191	.319
8. Northern Iowa	13	65	196	.332
9. Bradley	15	110	322	.342
10. Indiana State	11	87	237	.367

REBOUNDING OFFENSE	G	Rebounds	Avg/G
1. Missouri State	11	433	39.4
2. Drake	15	586	39.1
3. Bradley	15	557	37.1
4. Northern Iowa	13	471	36.2
5. Loyola	13	464	35.7
6. Evansville	12	417	34.8
7. Illinois State	14	486	34.7
8. Southern Illinois	13	435	33.5
9. Indiana State	11	364	33.1
10. Valparaiso	11	351	31.9

REBOUNDING DEFENSE	G	Rebounds	Avg/G
1. Southern Illinois	13	408	31.4
2. Drake	15	484	32.3
3. Missouri State	11	355	32.3
4. Illinois State	14	479	34.2
5. Northern Iowa	13	455	35.0
Loyola	13	455	35.0
7. Bradley	15	544	36.3
8. Indiana State	11	425	38.6
9. Valparaiso	11	454	41.3
10. Evansville	12	505	42.1



2020-21 Missouri Valley Conference
CONFERENCE BASKETBALL STATISTICS
Through games of Feb 22, 2021 (Conference games only)



REBOUNDING MARGIN	G	Team	Avg.	Opp.	Avg.	Margin
1. Missouri State	11	433	39.4	355	32.3	+7.1
2. Drake	15	586	39.1	484	32.3	+6.8
3. Southern Illinois	13	435	33.5	408	31.4	+2.1
4. Northern Iowa	13	471	36.2	455	35.0	+1.2
5. Bradley	15	557	37.1	544	36.3	+0.9
6. Loyola	13	464	35.7	455	35.0	+0.7
7. Illinois State	14	486	34.7	479	34.2	+0.5
8. Indiana State	11	364	33.1	425	38.6	-5.5
9. Evansville	12	417	34.8	505	42.1	-7.3
10. Valparaiso	11	351	31.9	454	41.3	-9.4

ASSISTS	G	No.	Avg/G
1. Drake	15	311	20.7
2. Northern Iowa	13	198	15.2
3. Missouri State	11	165	15.0
4. Bradley	15	205	13.7
5. Southern Illinois	13	175	13.5
6. Valparaiso	11	136	12.4
7. Indiana State	11	120	10.9
8. Loyola	13	141	10.8
9. Illinois State	14	136	9.7
10. Evansville	12	110	9.2

TURNOVER MARGIN	G	Team	Avg.	Opp.	Avg.	Margin
1. Missouri State	11	143	13.0	187	17.0	+4.0
2. Valparaiso	11	158	14.4	201	18.3	+3.9
3. Bradley	15	199	13.3	223	14.9	+1.6
4. Loyola	13	198	15.2	215	16.5	+1.3
5. Illinois State	14	210	15.0	221	15.8	+0.8
6. Indiana State	11	163	14.8	166	15.1	+0.3
7. Southern Illinois	13	184	14.2	182	14.0	-0.2
8. Northern Iowa	13	208	16.0	191	14.7	-1.3
9. Drake	15	280	18.7	229	15.3	-3.4
10. Evansville	12	238	19.8	166	13.8	-6.0

OFFENSIVE REBOUNDS	G	No.	Avg/G
1. Missouri State	11	146	13.3
2. Indiana State	11	133	12.1
3. Southern Illinois	13	150	11.5
4. Loyola	13	138	10.6
5. Bradley	15	158	10.5
6. Northern Iowa	13	131	10.1
7. Drake	15	149	9.9
8. Valparaiso	11	90	8.2
9. Evansville	12	98	8.2
10. Illinois State	14	105	7.5

DEFENSIVE REB PCT.	G	D-Reb	Opp. OR	D-Reb%
1. Missouri State	11	287	81	.780
2. Illinois State	14	381	120	.760
3. Southern Illinois	13	285	105	.731
4. Loyola	13	326	122	.728
5. Bradley	15	399	153	.723
6. Drake	15	437	178	.711
7. Northern Iowa	13	340	146	.700
8. Indiana State	11	231	107	.683
9. Valparaiso	11	261	125	.676
10. Evansville	12	319	161	.665

BLOCKED SHOTS	G	No.	Avg/G
1. Bradley	15	74	4.9
2. Missouri State	11	53	4.8
3. Drake	15	69	4.6
4. Northern Iowa	13	45	3.5
5. Valparaiso	11	31	2.8
6. Loyola	13	36	2.8
7. Evansville	12	30	2.5
8. Illinois State	14	34	2.4
9. Southern Illinois	13	21	1.6
10. Indiana State	11	16	1.5

STEALS	G	No.	Avg/G
1. Missouri State	11	111	10.1
2. Valparaiso	11	105	9.5
3. Indiana State	11	94	8.5
4. Drake	15	126	8.4
5. Loyola	13	101	7.8
6. Illinois State	14	106	7.6
7. Southern Illinois	13	94	7.2
8. Bradley	15	107	7.1
9. Northern Iowa	13	91	7.0
10. Evansville	12	76	6.3

ASSIST/TURNOVER RATIO	G	Ast.	Avg.	T/O	Avg.	Ratio
1. Missouri State	11	165	15.0	143	13.0	1.2
2. Drake	15	311	20.7	280	18.7	1.1
3. Bradley	15	205	13.7	199	13.3	1.0
4. Northern Iowa	13	198	15.2	208	16.0	1.0
5. Southern Illinois	13	175	13.5	184	14.2	1.0
6. Valparaiso	11	136	12.4	158	14.4	0.9
7. Indiana State	11	120	10.9	163	14.8	0.7
8. Loyola	13	141	10.8	198	15.2	0.7
9. Illinois State	14	136	9.7	210	15.0	0.6
10. Evansville	12	110	9.2	238	19.8	0.5

DEFENSIVE REBOUNDS	G	No.	Avg/G
1. Drake	15	437	29.1
2. Illinois State	14	381	27.2
3. Bradley	15	399	26.6
4. Evansville	12	319	26.6
5. Northern Iowa	13	340	26.2
6. Missouri State	11	287	26.1
7. Loyola	13	326	25.1
8. Valparaiso	11	261	23.7
9. Southern Illinois	13	285	21.9
10. Indiana State	11	231	21.0

OFFENSIVE REB PCT.	G	O-Reb	Opp. DR	O-Reb%
1. Missouri State	11	146	274	.348
2. Southern Illinois	13	150	303	.331
3. Drake	15	149	306	.327
4. Northern Iowa	13	131	309	.298
5. Indiana State	11	133	318	.295
6. Loyola	13	138	333	.293
7. Bradley	15	158	391	.288
8. Illinois State	14	105	359	.226
9. Evansville	12	98	344	.222
10. Valparaiso	11	90	329	.215



2020-21 Missouri Valley Conference
CONFERENCE BASKETBALL STATISTICS
Through games of Feb 22, 2021 (Conference games only)



3-POINT FG MADE	G	No.	Avg/G
1. Valparaiso	11	100	9.1
2. Drake	15	126	8.4
3. Northern Iowa	13	108	8.3
4. Bradley	15	107	7.1
5. Southern Illinois	13	84	6.5
6. Illinois State	14	81	5.8
7. Missouri State	11	57	5.2
8. Loyola	13	64	4.9
9. Indiana State	11	44	4.0
10. Evansville	12	43	3.6



2020-21 Missouri Valley Conference
CONFERENCE BASKETBALL STATISTICS
Through games of Feb 22, 2021 (Conference games only)



Team	Conference	Pct.	PF	PA	Overall	Pct.	PF	PA	Current unbeaten streak
Missouri State	11-0	1.000	69.1	59.6	11-0	1.000	69.1	59.6	Missouri State -- 11
Drake	10-5	.667	76.7	62.9	10-5	.667	76.7	62.9	Illinois State -- 2
Loyola	8-5	.615	57.6	56.2	8-5	.615	57.6	56.2	Southern Illinois -- 2
Illinois State	9-6	.600	62.1	58.1	9-6	.600	66.5	62.3	Loyola -- 1
Northern Iowa	7-6	.538	72.3	68.5	7-6	.538	72.3	68.5	Valparaiso -- 1
Bradley	8-7	.533	69.2	64.4	8-7	.533	69.2	64.4	
Southern Illinois	5-8	.385	58.8	61.1	5-8	.385	58.8	61.1	
Valparaiso	4-7	.364	61.8	63.8	4-7	.364	61.8	63.8	
Evansville	2-11	.154	46.6	63.8	2-11	.154	50.5	69.1	
Indiana State	1-10	.091	55.2	76.4	1-10	.091	55.2	76.4	

TEAM SUMMARIES	G	PF-PA	Avg score	Margin	FG-FGA	Pct.	3FG-FGA	Pct.	FT-FTA	Pct.	RebF	RebA	Margin
Bradley	15	1038-966	69.2-64.4	+4.8	384-907	.423	107-323	.331	163-226	.721	557	544	+0.9
Drake	15	1150-944	76.7-62.9	+13.7	426-851	.501	126-318	.396	172-241	.714	586	484	+6.8
Evansville	12	606-829	50.5-69.1	-18.6	206-613	.336	43-200	.215	151-222	.680	417	505	-7.3
Illinois State	14	931-872	66.5-62.3	+4.2	326-764	.427	81-237	.342	198-275	.720	486	479	+0.5
Indiana State	11	607-840	55.2-76.4	-21.2	224-646	.347	44-182	.242	115-183	.628	364	425	-5.5
Loyola	13	749-731	57.6-56.2	+1.4	271-711	.381	64-214	.299	143-206	.694	464	455	+0.7
Missouri State	11	760-656	69.1-59.6	+9.5	285-681	.419	57-187	.305	133-185	.719	433	355	+7.1
Northern Iowa	13	940-891	72.3-68.5	+3.8	322-745	.432	108-329	.328	188-238	.790	471	455	+1.2
Southern Illinois	13	764-794	58.8-61.1	-2.3	289-713	.405	84-258	.326	102-158	.646	435	408	+2.1
Valparaiso	11	680-702	61.8-63.8	-2.0	225-625	.360	100-334	.299	130-175	.743	351	454	-9.4

ATTENDANCE	Home	Average	Away	Average	Neutral	Average	Total	Average
Bradley	6-0	0	9-3464	385	0-0	0	15-3464	231
Drake	7-2003	286	8-3163	395	0-0	0	15-5166	344
Evansville	7-0	0	5-178	36	0-0	0	12-178	15
Illinois State	8-0	0	6-1170	195	0-0	0	14-1170	84
Indiana State	6-455	76	5-503	101	0-0	0	11-958	87
Loyola	6-0	0	7-930	133	0-0	0	13-930	72
Missouri State	5-6880	1376	6-1106	184	0-0	0	11-7986	726
Northern Iowa	6-2802	467	7-655	94	0-0	0	13-3457	266
Southern Illinois	4-0	0	9-1675	186	0-0	0	13-1675	129
Valparaiso	9-704	78	2-0	0	0-0	0	11-704	64
Totals	64-12844	201	64-12844	201	0-0	0	128-25688	201



2020-21 Missouri Valley Conference
INDIVIDUAL BASKETBALL STATISTICS
Through games of Feb 22, 2021 (Conference games only)



To be ranked, a player must appear in at least 75.0% of their team's games.

SCORING								REBOUNDING							
	Cl	G	FG	3FG	FT	Pts	Avg/G		Cl	G	Off	Def	Total	Avg/G	
1. Petree, Lasha-BRAD	Jr	15	86	29	50	251	16.7	1. Franklin,Jasmine-MSU	Jr	11	34	73	107	9.7	
2. Berg,Grace-DU	So	15	98	8	45	249	16.6	2. Feit, Abby-UE	So	12	8	74	82	6.8	
3. Haack, Gabi-BRAD	Sr	15	81	34	45	241	16.1	3. Redmond, Juliunn-ILS	Sr	14	18	77	95	6.8	
4. Redmond, Juliunn-ILS	Sr	14	76	15	41	208	14.9	4. Burich,Monica-DU	Sr	15	25	76	101	6.7	
5. Frederick, Shay-Valpo	Jr	11	46	22	49	163	14.8	5. Haack, Gabi-BRAD	Sr	15	24	74	98	6.5	
6. RUCKER, Karli-UNI	Sr	13	72	15	30	189	14.5	6. McChristine,Jamyra-INS	Sr	11	35	35	70	6.4	
7. Calip,Brice-MSU	Sr	11	50	7	51	158	14.4	7. Day, Allison-LUC	Jr	13	32	49	81	6.2	
8. Silvey, Makenzie-SIU	Sr	11	65	21	7	158	14.4	8. GUNNELS, Bre-UNI	Sr	13	18	63	81	6.2	
9. Weinman, Carie-Valpo	Jr	11	55	19	21	150	13.6	9. Folks,Adrian-INS	So	11	23	45	68	6.2	
10. Franklin,Jasmine-MSU	Jr	11	51	0	37	139	12.6	10. Wilson, DeAnna-ILS	So	14	25	59	84	6.0	
11. Feit, Abby-UE	So	12	47	10	39	143	11.9	11. Thurwalker, Sydney-UE	So	12	21	49	70	5.8	
12. White, Nyjah-BRAD	Sr	15	75	0	22	172	11.5	12. White, Grace-Valpo	Sr	9	15	34	49	5.4	
13. Folks,Adrian-INS	So	11	51	1	19	122	11.1	13. Hipp,Abby-MSU	Sr	11	26	33	59	5.4	
14. Moore,Terrion-ILS	Jr	14	55	15	29	154	11.0	14. White, Nyjah-BRAD	Sr	15	22	56	78	5.2	
15. Crompton,Mary-ILS	So	14	50	32	21	153	10.9	15. Marsh, Emily-BRAD	Sr	15	15	62	77	5.1	
16. Day, Allison-LUC	Jr	13	52	1	33	138	10.6	16. Wilson,Sydney-MSU	Jr	11	26	30	56	5.1	
17. Rice, Ellie-LUC	Sr	13	48	21	17	134	10.3	17. MAAHS, Megan-UNI	Sr	13	17	49	66	5.1	
18. Monahan,Maddie-DU	Sr	12	38	19	24	119	9.9	18. Wooldridge,Allie-DU	Jr	15	16	58	74	4.9	
19. McCallister, Payton-SIU	Jr	13	42	22	22	128	9.8	19. Poland, Jada-UE	Sr	12	11	46	57	4.8	
20. Hipp,Abby-MSU	Sr	11	47	2	11	107	9.7	20. Berg,Grace-DU	So	15	23	48	71	4.7	
21. Gueldner,Sarah Beth-DU	So	15	51	36	3	141	9.4								
22. Ruffridge,Elle-MSU	Sr	11	37	21	5	100	9.1								
23. Anderson,Caitlin-INS	So	10	28	0	34	90	9.0								
24. Morrison, Caitlin-Valpo	Sr	11	36	19	6	97	8.8								
25. McChristine,Jamyra-INS	Sr	11	38	0	20	96	8.7								
26. Wolf, Cynthia-UNI	Jr	13	44	10	13	111	8.5								
27. White, Grace-Valpo	Sr	9	25	10	16	76	8.4								
28. Koenig, Tatum-BRAD	Jr	15	41	24	18	124	8.3								
29. GUNNELS, Bre-UNI	Sr	13	29	8	40	106	8.2								
30. Burich,Monica-DU	Sr	15	47	9	16	119	7.9								

FIELD GOAL PCT						ASSISTS			
	Cl	G	FGM	FGA	Pct.		Cl	G	No. Avg/G
1. Wolf, Cynthia-UNI	Jr	13	44	68	.647	1. Calip,Brice-MSU	Sr	11	58 5.3
2. Berg,Grace-DU	So	15	98	172	.570	2. RUCKER, Karli-UNI	Sr	13	57 4.4
3. Day, Allison-LUC	Jr	13	52	96	.542	3. Frederick, Shay-Valpo	Jr	11	48 4.4
4. Hipp,Abby-MSU	Sr	11	47	87	.540	4. Monahan,Maddie-DU	Sr	12	51 4.3
5. Burich,Monica-DU	Sr	15	47	90	.522	5. White, Nyjah-BRAD	Sr	15	57 3.8
6. Gueldner,Sarah Beth-DU	So	15	51	99	.515	6. Wooldridge,Allie-DU	Jr	15	43 2.9
7. Walker, Gabby-SIU	Sr	12	38	77	.494	7. Berg,Grace-DU	So	15	42 2.8
8. Franklin,Jasmine-MSU	Jr	11	51	105	.486	8. Newman, Anna-UE	Jr	10	28 2.8
9. Haack, Gabi-BRAD	Sr	15	81	168	.482	9. White, Grace-Valpo	Sr	9	25 2.8
10. Folks,Adrian-INS	So	11	51	107	.477	10. Saylor,Paige-ILS	Sr	14	36 2.6
11. Silvey, Makenzie-SIU	Sr	11	65	139	.468	11. Wilson,Sydney-MSU	Jr	11	28 2.5
12. Moore,Terrion-ILS	Jr	14	55	118	.466	12. Link, Caitlin-SIU	Jr	13	33 2.5
13. Monahan,Maddie-DU	Sr	12	38	83	.458	13. Galanopoulos, Sam-LUC	So	13	32 2.5
14. Redmond, Juliunn-ILS	Sr	14	76	168	.452	14. Silvey, Makenzie-SIU	Sr	11	27 2.5
15. RUCKER, Karli-UNI	Sr	13	72	164	.439	15. Koeniq, Tatum-BRAD	Jr	15	36 2.4



2020-21 Missouri Valley Conference
INDIVIDUAL BASKETBALL STATISTICS
Through games of Feb 22, 2021 (Conference games only)



FREE THROW PCT		Cl	G	FTM	FTA	Pct.
1.	MAAHS, Megan-UNI	Sr	13	34	36	.944
2.	Monahan, Maddie-DU	Sr	12	24	27	.889
3.	Calip, Brice-MSU	Sr	11	51	58	.879
4.	Petree, Lasha-BRAD	Jr	15	50	60	.833
	GUNNELS, Bre-UNI	Sr	13	40	48	.833
	RUCKER, Karli-UNI	Sr	13	30	36	.833
7.	Redmond, Juliunn-ILS	Sr	14	41	51	.804
8.	Haack, Gabi-BRAD	Sr	15	45	56	.804
	Berg, Grace-DU	So	15	45	56	.804
10.	Frederick, Shay-Valpo	Jr	11	49	61	.803
11.	Day, Allison-LUC	Jr	13	33	42	.786
12.	Feit, Abby-UE	So	12	39	50	.780
13.	Newman, Anna-UE	Jr	10	28	37	.757
14.	Anderson, Caitlin-INS	So	10	34	45	.756
15.	Moore, Terrion-ILS	Jr	14	29	40	.725

STEALS		Cl	G	No.	Avg/G
1.	Franklin, Jasmine-MSU	Jr	11	32	2.9
2.	Calip, Brice-MSU	Sr	11	31	2.8
3.	Weinman, Carrie-Valpo	Jr	11	28	2.5
4.	White, Grace-Valpo	Sr	9	19	2.1
5.	Moore, Terrion-ILS	Jr	14	25	1.8
6.	McCallister, Payton-SIU	Jr	13	23	1.8
7.	Berg, Grace-DU	So	15	25	1.7
8.	White, Nyjah-BRAD	Sr	15	23	1.5
9.	Williams, Del'Janae-INS	So	10	15	1.5
10.	Petree, Lasha-BRAD	Jr	15	22	1.5
11.	Frederick, Shay-Valpo	Jr	11	16	1.5
12.	Anderson, Caitlin-INS	So	10	14	1.4
13.	McChristine, Jamyra-INS	Sr	11	15	1.4
14.	Redmond, Juliunn-ILS	Sr	14	19	1.4
15.	Day, Allison-LUC	Jr	13	16	1.2
	Tanin, Sitori-LUC	Fr	13	16	1.2

3-POINT FG PCT		Cl	G	3FG	FGA	Pct.
1.	Gueldner, Sarah Beth-DU	So	15	36	76	.474
2.	Monahan, Maddie-DU	Sr	12	19	43	.442
3.	Silvey, Makenzie-SIU	Sr	11	21	52	.404
4.	Crompton, Mary-ILS	So	14	32	80	.400
	Koenig, Tatum-BRAD	Jr	15	24	60	.400
6.	Brown, Anna-LUC	So	13	13	34	.382
7.	KROEGER, Nicole-UNI	Sr	13	18	48	.375
8.	Weinman, Carrie-Valpo	Jr	11	19	51	.373
9.	Morrison, Caitlin-Valpo	Sr	11	19	52	.365
10.	Haack, Gabi-BRAD	Sr	15	34	95	.358
11.	Redmond, Juliunn-ILS	Sr	14	15	42	.357
12.	Ruffridge, Elle-MSU	Sr	11	21	60	.350
13.	Frederick, Shay-Valpo	Jr	11	22	63	.349
14.	Rice, Ellie-LUC	Sr	13	21	61	.344
15.	RUCKER, Karli-UNI	Sr	13	15	45	.333
	Moore, Terrion-ILS	Jr	14	15	45	.333

3-POINT FG MADE		Cl	G	3FG	Avg/G
1.	Gueldner, Sarah Beth-DU	So	15	36	2.4
2.	Crompton, Mary-ILS	So	14	32	2.3
3.	Haack, Gabi-BRAD	Sr	15	34	2.3
4.	Frederick, Shay-Valpo	Jr	11	22	2.0
5.	Petree, Lasha-BRAD	Jr	15	29	1.9
6.	Silvey, Makenzie-SIU	Sr	11	21	1.9
	Ruffridge, Elle-MSU	Sr	11	21	1.9
8.	Morrison, Caitlin-Valpo	Sr	11	19	1.7
	Weinman, Carrie-Valpo	Jr	11	19	1.7
10.	McCallister, Payton-SIU	Jr	13	22	1.7
11.	Rice, Ellie-LUC	Sr	13	21	1.6
12.	Koenig, Tatum-BRAD	Jr	15	24	1.6
13.	Monahan, Maddie-DU	Sr	12	19	1.6
14.	KROEGER, Nicole-UNI	Sr	13	18	1.4
15.	Pitzer, Sommer-INS	So	9	11	1.2

BLOCKED SHOTS		Cl	G	No.	Avg/G
1.	Petree, Lasha-BRAD	Jr	15	34	2.3
2.	Morrison, Caitlin-Valpo	Sr	11	14	1.3
3.	Jackson, Abigail-MSU	Sr	11	13	1.2
4.	Franklin, Jasmine-MSU	Jr	11	12	1.1
5.	Feit, Abby-UE	So	12	13	1.1
6.	Tanin, Sitori-LUC	Fr	13	12	0.9
	GUNNELS, Bre-UNI	Sr	13	12	0.9
8.	White, Grace-Valpo	Sr	9	8	0.9
9.	Burich, Monica-DU	Sr	15	13	0.9
10.	Berg, Grace-DU	So	15	12	0.8
11.	Marsh, Emily-BRAD	Sr	15	11	0.7
12.	Calip, Brice-MSU	Sr	11	8	0.7
13.	MAAHS, Megan-UNI	Sr	13	9	0.7
14.	Wooldridge, Allie-DU	Jr	15	10	0.7
	Poland, Jada-UE	Sr	12	8	0.7

ASSIST/TURNOVER RATIO		Cl	G	Ast.	T/O	Ratio
1.	Calip, Brice-MSU	Sr	11	58	18	3.2
2.	Monahan, Maddie-DU	Sr	12	51	30	1.7
3.	RUCKER, Karli-UNI	Sr	13	57	36	1.6
4.	White, Nyjah-BRAD	Sr	15	57	42	1.4
5.	Frederick, Shay-Valpo	Jr	11	48	42	1.1



2020-21 Missouri Valley Conference
INDIVIDUAL BASKETBALL STATISTICS
Through games of Feb 22, 2021 (Conference games only)



OFFENSIVE REBOUNDS	Cl	G	No.	Avg/G
1. McChristine, Jamyra-INS	Sr	11	35	3.2
2. Franklin, Jasmine-MSU	Jr	11	34	3.1
3. Day, Allison-LUC	Jr	13	32	2.5
4. Hipp, Abby-MSU	Sr	11	26	2.4
Wilson, Sydney-MSU	Jr	11	26	2.4
6. Folks, Adrian-INS	So	11	23	2.1
7. Walker, Gabby-SIU	Sr	12	22	1.8
8. Wilson, DeAnna-ILS	So	14	25	1.8
9. Katcher, Adrianna-SIU	Fr	13	23	1.8
10. Thurwalker, Sydney-UE	So	12	21	1.8
11. Burich, Monica-DU	Sr	15	25	1.7
White, Grace-Valpo	Sr	9	15	1.7
13. Haack, Gabi-BRAD	Sr	15	24	1.6
14. Tanin, Sitori-LUC	Fr	13	20	1.5
15. Berg, Grace-DU	So	15	23	1.5

DEFENSIVE REBOUNDS	Cl	G	No.	Avg/G
1. Franklin, Jasmine-MSU	Jr	11	73	6.6
2. Feit, Abby-UE	So	12	74	6.2
3. Redmond, Juliunn-ILS	Sr	14	77	5.5
4. Burich, Monica-DU	Sr	15	76	5.1
5. Haack, Gabi-BRAD	Sr	15	74	4.9
6. GUNNELS, Bre-UNI	Sr	13	63	4.8
7. Wilson, DeAnna-ILS	So	14	59	4.2
8. Marsh, Emily-BRAD	Sr	15	62	4.1
9. Folks, Adrian-INS	So	11	45	4.1
10. Thurwalker, Sydney-UE	So	12	49	4.1
11. Wooldridge, Allie-DU	Jr	15	58	3.9
12. Rice, Ellie-LUC	Sr	13	50	3.8
13. Poland, Jada-UE	Sr	12	46	3.8
14. Calip, Brice-MSU	Sr	11	42	3.8
15. Moore, Terrion-ILS	Jr	14	53	3.8

MINUTES PLAYED	Cl	G	No.	Avg/G
1. Frederick, Shay-Valpo	Jr	11	392	35.6
2. Haack, Gabi-BRAD	Sr	15	521	34.7
3. Feit, Abby-UE	So	12	415	34.6
4. McCallister, Payton-SIU	Jr	13	448	34.5
5. Koenig, Tatum-BRAD	Jr	15	511	34.1
6. Calip, Brice-MSU	Sr	11	373	33.9
7. Weinman, Carrie-Valpo	Jr	11	372	33.8
8. Crompton, Mary-ILS	So	14	457	32.6
9. Wilson, Sydney-MSU	Jr	11	358	32.5
10. Redmond, Juliunn-ILS	Sr	14	454	32.4
11. Saylor, Paige-ILS	Sr	14	448	32.0
12. Silvey, Makenzie-SIU	Sr	11	350	31.8
13. Rice, Ellie-LUC	Sr	13	413	31.8
14. Petree, Lasha-BRAD	Jr	15	474	31.6
15. RUCKER, Karli-UNI	Sr	13	406	31.2
16. White, Grace-Valpo	Sr	9	278	30.9
17. Folks, Adrian-INS	So	11	332	30.2
18. Newman, Anna-UE	Jr	10	296	29.6
19. Moore, Terrion-ILS	Jr	14	399	28.5
20. Link, Caitlin-SIU	Jr	13	367	28.2
21. Berg, Grace-DU	So	15	422	28.1
22. Ruffridge, Elle-MSU	Sr	11	307	27.9
23. Day, Allison-LUC	Jr	13	361	27.8
24. Pitzer, Sommer-INS	So	9	249	27.7
25. Chandler, Maya-LUC	Fr	13	359	27.6
26. Galanopoulos, Sam-LUC	So	13	356	27.4
27. White, Nyjah-BRAD	Sr	15	409	27.3
28. Franklin, Jasmine-MSU	Jr	11	297	27.0
29. Poland, Jada-UE	Sr	12	323	26.9
30. KROEGER, Nicole-UNI	Sr	13	345	26.5



2020-21 Missouri Valley Conference
INDIVIDUAL BASKETBALL STATISTICS
Through games of Feb 22, 2021 (Conference games only)



TEAM IDENTIFICATION	Team ID
Bradley	BRAD
Drake	DU
Evansville	UE
Illinois State	ILS
Indiana State	INS
Loyola	LUC
Missouri State	MSU
Northern Iowa	UNI
Southern Illinois	SIU
Valparaiso	VALPO