



### 2020-21 Standings -- As of Monday, Dec. 14

	MISSOURI VALLEY				OVERALL			
	Record	Pct.	PF	PA	Record	Pct.	PF	PA
Illinois State	0-0	.000	0.0	0.0	2-0	1.000	91.5	54.0
#20/22 Missouri State	0-0	.000	0.0	0.0	3-1	.750	78.5	56.8
Indiana State	0-0	.000	0.0	0.0	3-1	.750	73.8	69.5
Southern Illinois	0-0	.000	0.0	0.0	2-1	.667	63.7	56.7
Northern Iowa	0-0	.000	0.0	0.0	3-2	.600	72.4	74.4
Bradley	0-0	.000	0.0	0.0	3-2	.600	68.6	67.2
Valparaiso	0-0	.000	0.0	0.0	3-2	.600	59.6	58.8
Drake	0-0	.000	0.0	0.0	2-2	.500	83.0	75.0
Loyola	0-0	.000	0.0	0.0	1-1	.500	68.5	66.5
Evansville	0-0	.000	0.0	0.0	1-1	.500	65.5	72.0

• • MVC Home: 0-0 • • Non-Conference: 23-13 • Home: 12-3 • Away: 10-9 • Neutral: 1-1 • Top-25: 2-1 • •

### Recent Results/ Upcoming Schedule

#### Monday, December 7

Western Illinois at Indiana State ..... W, 78-51  
Lincoln at #21 Missouri State ..... W, 100-38

#### Tuesday, December 8

Valparaiso at Miami (OH) ..... L, 67-49

#### Saturday, December 12

Western Michigan at Valparaiso ..... W, 75-51  
#22 South Dakota State at UNI ..... W, 65-48  
Austin Peay at Southern Illinois ..... W, 72-54

#### Sunday, December 13

SEMO at Southern Illinois ..... W, 67-51  
Northern Illinois at Bradley ..... W, 79-71  
Illinois State at Western Illinois ..... W, 85-55  
Loyola at #24 DePaul ..... L, 76-67

#### Monday, December 14

Indiana State at Xavier (FloHoops) ..... 6 PM  
#20 Missouri State at Missouri (SECN+) ..... 7 PM

#### Tuesday, December 15

Southern Illinois at UT-Martin (ESPN+) ..... 5 PM  
Drake at South Dakota State (ESPN3) ..... 6 PM  
Iowa State at UNI (ESPN+) ..... 6:30 PM

#### Wednesday, December 16

Xavier at Valparaiso (ESPN+) ..... 1 PM  
Oakland City at Evansville (ESPN3) ..... 6 PM

#### Thursday, December 17

South Dakota at Bradley (ESPN3) ..... 1 PM  
Omaha at Illinois State (ESPN+) ..... 2 PM  
Kansas City at Southern Illinois (ESPN3) ..... 6 PM

#### Friday, December 18

Purdue Northwest at Loyola (ESPN3) ..... 7 PM

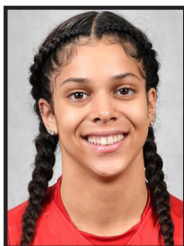
#### Saturday, December 19

South Dakota State at #20 Missouri State (ESPN3) ..... 1 PM  
Miami (OH) at Evansville (ESPN+) ..... 1 PM  
Lewis at Drake (ESPN+) ..... 4 PM

#### Sunday, December 20

Indiana State at Dayton ..... 1 PM  
Valparaiso at Wisconsin (BTN+) ..... 2 PM

ALL TIMES CENTRAL



### MVC Player of the Week

#### Lasha Petree, Jr., G, Bradley

Petree sparked a Bradley comeback, scoring 26 of her season-best 30 points in the second half (including 17 points in the fourth quarter) as she helped the Braves erase a 10-point second half deficit in a 79-71 win over Northern Illinois Sunday. Petree also added three rebounds, one assist, two blocks and a steal in her 32 minutes. Limited to just four points in the first half due to foul trouble, she took over down the stretch; scoring 22 of Bradley's final 35 points. In fact, with Bradley trailing by five to start the fourth quarter she outscored NIU on her own (17-15) in the final period. Petree hit a game-tying three-pointer with just under six minutes to play and scored nine points during a 13-3 run that put Bradley in front. With Bradley holding a three-point lead in the final minute, Petree had a steal and three-point play to help seal the victory.

**Other Notable Performances:** Mary Crompton (ILS); Maya Chandler (LUC); Sydney Wilson (MSU); Karli Rucker (UNI); Abby Brockmeyer (SIU); Carrie Weinman (VALPO)



### MVC Newcomer of the Week

#### Essy Latu, Jr., G/F, Indiana State

Indiana State's Essy Latu continued her hot shooting on Monday against Western Illinois to help the Sycamore claim their third-straight victory. The junior finished with 18 points on 6-of-9 from deep, tied for the second most triples by a Sycamore in Hulman Center history and her 66.7% from behind the line is the eighth-best in arena history. Latu is currently 18th in the nation in three-point field goals made per game (3.75) and 19th in total made threes at 15. She is shooting a blistering 45.5% from deep on the year.

**Other Notable Performances:** DeAnna Wilson (ILS); Maya Chandler (LUC); Abi Jackson (MSU); Emerson Green (UNI); Quierra Love (SIU)



## NOTEWORTHY

In addition to the league's Player and Newcomer of the Week selections, several conference players had notable performances, including:

**Mary Crompton (ILS)** - Redshirt sophomore Mary Crompton led the Redbirds in scoring for the second-straight game, totaling 14 points in ISU's 85-55 victory over Western Illinois on Sunday afternoon. Crompton shot 3-of-5 (60%) from deep and 5-of-7 (71.4%) from the charity stripe.

**Maya Chandler (LUC)** - For the second time in as many career outings, Loyola freshman guard Maya Chandler reached double figures in scoring as Loyola dropped a hard-fought 76-67 contest to No. 24/23 DePaul on Sunday afternoon at Wintrust Arena. Out of Martinsville, Ind., Chandler finished with a team-high 14 points (5-10 FGs, 4-4 FTs) in addition to grabbing two rebounds and dishing out an assist. The 5-foot-7 guard currently ranks 10th overall in the MVC in scoring, averaging 14.0 points, a mark that leads all Valley freshmen.

**Sydney Wilson (MSU)** - Sydney Wilson scored a career-high 21 points on 8-of-10 shooting Monday against Lincoln, adding two steals and two rebounds in just 16 minutes of action. Wilson made both of her 3-point attempts and was 3-for-3 from the foul line.

**Karli Rucker (UNI)** - Karli Rucker scored a season-high 18 points and added three assists and two steals to lead UNI to a 65-48 win over No. 21 South Dakota State. She was 6-12 from the field and 4-4 from the free throw line in the win. She is now 17th on the UNI all-time scoring list and just two points shy of No. 16 Jessie Biggs.

**Abby Brockmeyer (SIU)** - Abby Brockmeyer averaged a double-double in leading the Salukis to back-to-back wins over the weekend. The senior forward from Raymond, Ill. averaged 13.0 points, 10.5 rebounds, two assists, 1.5 blocks and 1.5 steals in 30.4 minutes. Brockmeyer finished a rebound shy of a double-double in SIU's win over Austin Peay, as she tallied 14 points, nine rebounds, three steals and three assists. She followed with her 20th career double-double in the victory over the Redhawks, as she finished with 12 points, 12 rebounds and two blocks. Brockmeyer currently leads the conference in rebounds per game (9.7) and has scored in double figures in all three of SIU's contests this season.

**Carie Weinman (VALPO)** - Weinman led Valpo in scoring in both of its games last week. She opened the week with a 16-point performance at Miami and followed with a career-high 24 points in just 24 minutes in Valpo's rout of Western Michigan. Weinman scored 16 of her points against the Broncos in the first 12 minutes of the game, helping Valpo jump out to a 17-point lead in that stretch. An MVC All-Defensive Team selection and the conference leader in steals last year, Weinman also tallied four steals in both games last week and has recorded four steals in four of the season's first five games.

**DeAnna Wilson (ILS)** - Sophomore forward DeAnna Wilson made an immediate impact in her Redbird debut, finishing tied for the team-high with 14 points, also grabbing five rebounds and recording a game-high three steals. Wilson went 5-of-7 (71.4%) from the field and a perfect 4-of-4 from the free throw line, also taking three charges in the paint.

**Abi Jackson (MSU)** - Abi Jackson had 12 points, seven rebounds, three steals and four blocked shots in 25 minutes during Monday's 100-38 victory against Lincoln. Jackson shot 6-of-12 from the field, while her career-high four stuffs helped MSU post the second-best single-game block total in school history with 13.

**Emmerson Green (UNI)** - Emerson Green tallied eight points, including a pair of three-pointers and three assists in just 18 minutes of playing time as UNI defeated No. 21 SDSU 65-48. More than her offensive prowess, Green's defense helped hold SDSU to their 61-48 loss to Creighton on Nov. 12, 2019.

**Quierra Love (SIU)** - Quierra Love averaged 10.5 points, 3.5 assists, 2.5 rebounds and 1.5 steals in a pair of Saluki wins over the weekend. The freshman from Glen Carbon, Ill. finished with a career-high 14 points on 5-of-6 shooting to go along with four assists and three steals in Southern's win over Austin Peay in what was just her second collegiate game. She followed with seven points, four boards and three assists in a team-best 33 minutes of work in SIU's win over the defending OVC Tournament Champion Redhawks on Sunday.

## PLAYERS OF THE WEEK

DATE	PLAYER	SCHOOL
N30	Brice Calip	Missouri State
D7	Grace White	Valparaiso
D14	Lasha Petree	Bradley
D21		
D30		
J4		
J11		
J18		
J25		
F1		
F8		
F15		
F22		
M1		
M8		

## NEWCOMERS OF THE WEEK

DATE	PLAYER	SCHOOL
N30	Grace Berg	Drake
D7	Grace Berg	Drake
D14	Essy Latu	Indiana State
D21		
D30		
J4		
J11		
J18		
J25		
F1		
F8		
F15		
F22		
M1		
M8		

MVC Players and Newcomers of the Week are selected each week during the women's basketball season. The players are announced on Monday afternoon and appear in a weekly press release. Nominees are provided by each school's sports information contact and voted on by a panel appointed by the league office.

### High Level Week

This week's Valley schedule is filled with marquee non-conference opportunities. Eight of the 16 games will feature teams from the Big East, Big 12, Big 10 and SEC as well as games vs. South Dakota and South Dakota State.

The Valley currently sits 4-3 vs. the Big Ten, 0-1 vs. the ACC and 2-1 vs. the Big East entering this week's schedule.

**Big East:** Indiana State at Xavier (Monday)

Xavier at Valparaiso (Wednesday)

**Big 12:** Iowa State at UNI (Tuesday)

**Big Ten:** Valparaiso at Wisconsin (Sunday)

**SEC:** Missouri State at Missouri (Monday)

Last season, the MVC earned nine wins over members of Power Five conferences during the regular season.

### Only B1G Non-Con Road Wins

Big Ten women's basketball teams are 29-3 in home non-conference games this year. All three of those losses have come via Valley women's basketball programs. Valpo claimed wins at Illinois and Purdue, while Drake won at Minnesota. Valpo can add another B1G road win at Wisconsin on Sunday.

### UNI's Dominant Top 25 Win

UNI was impressive in a 65-48 win over No. 22 South Dakota State. The win was the Panthers' fourth Top 25 win in non-conference play in program history and first since beating No. 24 Kansas State in 2016. The defensive effort, allowing only 48 points is the best defensive mark in any of the 51 total games played versus ranked foes in program history.

### Top 25 Success

The Valley is 2-1 vs. AP Top 25 Teams this season, with Missouri State's win over #12 Maryland and UNI's over #22 South Dakota State.

The last time The Valley had a pair of AP Top 25 wins during the non-conference portion of the season was back in 2002 when Drake beat No. 18 Iowa State and UNI beat No. 24 Iowa State.

### Red Hot Valley

Since Saturday, December 5, Valley women's basketball teams have won 14 of their last 17 contests, improving to 23-13 overall in non-conference action this season. All 10 programs sit at .500 or better on the season entering this week's action.

### Home Cooking

Currently MVC teams are 12-3 at home this season, going a perfect 7-0 at home last week. Last year, The Valley posted an impressive 39-9 (.813) record at home during non-conference play. This week's schedule has nine games currently on the schedule.

### DU: Back and Forth Rivalry

Tuesday's game at South Dakota State will be the fifth all-time meeting between the two schools in the series that is tied. Drake won last season's game that started the 2019-20 season while South Dakota State took the two prior contests. The first game against the two happened in 2005, shortly after SDSU transitioned from Division II.

### ILS: Plethora of Points

The Redbirds have combined to score 183 points in the first two games of the season. The 'Birds scored 98 points in the win over Saint Xavier and 85 points in Sunday's victory at Western Illinois. The last time ISU scored at least 183 points in back-to-back games was in November 2008 (94-82 W vs. Robert Morris on 11/22/08, 91-68 W at Western Illinois on 11/25/08).

### SIU: Perfect Week

The Salukis disposed of a pair of Ohio Valley Conference programs in back-to-back wins over the weekend. The Salukis used a 23-3 run in the fourth quarter to sink Austin Peay, 72-54 on Saturday and followed with a 67-51 win over the defending OVC Tournament Champion SEMO Redhawks on Sunday.

### INS: Offense Rising

With their 78-51 victory over Western Illinois on Monday, the Sycamores have put together 246 points over three games. Their total is the highest scoring output for the Blue & White over a three-game stretch since scoring 294 in games against Drake (84), Creighton (89) and Evansville (91) from Dec. 29, 2006-Jan. 4, 2007. After averaging only 59.8 points per game a year ago, the Trees are fourth in the Valley averaging 73.8 points per game.

### UE: Improving the Efficiency

Through two games, the Aces have already proven to be a much more efficient team in 2020-21 than in past seasons. Evansville has shot 40.9% from three this season, putting the Aces 21st in the nation in the stat. Evansville is also 86th in the NCAA Division I in field-goal percentage (43.7%) and 103rd in free-throw percentage (71.1%).

### VALPO: A Runaway Win

Valpo's lead reached as many as 26 points in the first half as it cruised to a 75-51 victory over Western Michigan Saturday. The 24-point margin of victory was the program's largest over a MAC team in nearly a quarter-century, as you have to go back to an 88-54 win over WMU in December 1996 to find a larger margin of victory against a MAC opponent.

### MSU: Dominating the Glass

Missouri State has won the rebounding battle all four games this year and 30 of the last 34, with a plus-17.0 margin this season ahead of the school-record pace (+9.9) and the .805 defensive rebounding percentage better than last season's NCAA-leading .773 mark.

### BU: Hot Hand

Bradley junior Lasha Petree scored 26 of her season-best 30 points in the second half of Sunday's victory over Northern Illinois to help Bradley rally from a 10-point second-half deficit. Petree, who collected her third career 30-point performance, turned in the highest scoring half for a Brave (26 points) since Genry Mueller had 26 in the second half of a home win over Indiana State on March 6, 2004. In addition, the 30-point effort moved Petree up three spots on Bradley's career scoring list into a tie with head coach Andrea Gorski for 21st at 980 career points. Petree needs 20 points to become the 21st Bradley player to reach 1,000 career points.

### Moving Up

Owning 220 career three-pointers, Bradley's Gabi Haack currently sits one three-pointer from catching Jackie Stiles for 25th in MVC history in three-point makes.

#### MVC Career Three-Pointers

Rank	Name (Years)	3FGM
23.	Kristi Cirone, ILS (2005-09)	229
24.	Katie Broadway, ILS (2008-12)	225
25.	Jackie Stiles, MSU (1998-01)	221

Gabi Haack, Bradley (2017-present) 220

### LUC: Oh So Close

Loyola came within minutes of picking up only its third win over a ranked team in program history on Sunday, ultimately dropping a 76-67 decision to No. 24/23 DePaul. Loyola, which led for long stretches of the second half, took a six-point lead into the fourth quarter, but fell victim to a 15-0 Blue Demon run that proved to be the difference. Maya Chandler continued her fast start to the season, scoring 14 points for the second time in as many outings to pace a trio of Ramblers in double figures.

### Polling

Missouri State appears No. 20 in this week's AP Top 25 Poll and No. 22 in the latest USA Today Coaches Top 25 poll (Dec. 8). Last week's ranking in the coaches poll marks MSU's 20th consecutive appearance, establishing a school record. The next coaches poll will be announced Tuesday.

### Mid-Major Top-25 Poll

The December 8th edition of the CollegeInsider.com Mid-Major Top 25 has Missouri State still at the top with 25 of the 31 1st place votes, while Drake moves up to No. 10. Bradley, UNI and Valparaiso are each receiving votes in the poll this week.

### 1,000-Point Club

The Valley has four active players in the 1,000-point club. Brice Calip became the 29th member of Missouri State's 1,000-point club in the season opener against Florida Gulf Coast.

#### Current MVC Players in 1,000-Point Club

1,239	- Gabi Haack, Bradley
1,225	- Makenzie Silvey, Southern Illinois
1,091	- Karli Rucker, UNI
1,053	- Brice Calip, Missouri State

#### Approaching 1,000-Point Club

980	- Lasha Petree, Bradley
927	- Abby Brockmeyer, Southern Illinois



## Rise of The Valley

The 2019-20 season tied the highest RPI ranking the Missouri Valley Conference has recorded in its history showcasing how The Valley is becoming one of the best mid-major leagues in the country. The league posted a top-15 RPI for the first time since 2012-13 during the 2018-19 season and increased to 8th last year, including five teams in the Top 100 of the RPI for the first time since the 1998-99 season.

Year	MVC RPI	Top 100 RPI Teams
2019-20	8	5
2018-19	14	5
2017-18	24	5
2016-17	17	5
2015-16	21	11
2014-15	21	11
2013-14	19	1

## Naismith Award Watch List

Bradley junior guard Lasha Petree has been named to the 2021 Women's Jersey Mike's Naismith Trophy Watch List according to an announcement by the Atlanta Tipoff Club. The preseason Watch List included 50 individuals from 11 conferences with Petree the lone representative from the MVC. The midseason 30 team will be announced in early February. The competition will be narrowed down to 10 national semifinalists on March 2, 2021, and four finalists will be named on March 19, 2021. The winner of the 2021 Jersey Mike's Naismith Trophy for Women's Player of the Year will be announced on April 3, 2021.

## Hammond Award Watch List

Missouri State junior forward Jasmine Franklin was named to the preseason watch list for the 2021 Becky Hammon Mid-Major Player of the Year Award presented by Her Hoop Stats. The second player in school history to reach 500 career rebounds as a sophomore, the Fayetteville, Ark., native had the 11th-highest defensive rebounding rate in the nation last season and ranked in the top 10% nationally in steals and blocks according to advanced metrics provided by Her Hoop Stats. In January, 15 players will be named to the midseason watch list.

## Lady Bears Favored

Missouri State was tabbed as the preseason favorite in the MVC Women's Basketball race in the annual survey of the league's coaches, SIDs and media.

### 2020-21 MVC WBB Preseason Poll

Rank	Team (1st-place votes)	Points
1.	Missouri State (33)	360
2.	Bradley (7)	328
3.	UNI	288
4.	Drake	282
5.	Illinois State	223
6.	Southern Illinois	201
7.	Valparaiso	176
8.	Loyola	133
9.	Indiana State	129
10.	Evansville	80

### MVC WBB Preseason All-Conference

PLAYER	TEAM	POS.	CL.
Brice Calip	Missouri State	G	Sr.
Jasmine Franklin	Missouri State	F	Jr.
Gabi Haack	Bradley	G	Sr.
*Lasha Petree	Bradley	G	Jr.

## New Schedule Format

The Missouri Valley Conference has adopted a new scheduling format for men's and women's basketball Conference games (the women's schedule is attached in multiple formats.) The Conference will continue to play an 18-game format in which most MVC teams will face one another in a two-game series on back-to-back days at the same site. Each institution will play four road series and four home series and will also face their designated 'travel partner' in a single-game, home-and-home series.

The new format significantly reduces travel and places an emphasis on the health and safety of student-athletes, coaches and staff. Rescheduling windows (Jan 30-31; Feb 27-28), plus reduced risk with less travel and fewer cross-team interactions should provide the league the best chance to play the most games. Additionally, the league's COVID-19 Working Group has worked tirelessly to develop testing and operational standards, and the league has employed KINEXON SafeZone technology to aid in contact tracing.

KINEXON SafeZone technology utilizes lightweight, wearable devices, called SafeTags, which will be used conference-wide by basketball student-athletes, coaches and select staff during practices and games. SafeTags can accurately calculate the proximity between individuals by distance and length of time in order to perform quick and accurate contact tracing. The devices will also be used by officials during all Conference basketball games.

## Starters Returning

The Missouri Valley Conference will see 34 of 50 starters return (68%) for the 2020-21 season. The league will return five of its top 10 in scoring, five of its top 10 in rebounding and two of its top five in assists. The Valley will also have five of its first-team All-MVC players return and three honorable mention selections.

## Postseason League

The MVC has seen an average of four league teams participate in postseason play in the last 21 seasons where postseason action took place, including three teams reaching postseason play in 2018-19. Before the 2019-20 season was cut short due to COVID-19, the MVC was in position to send 5 or 6 teams to postseason play. The Valley has earned multiple NCAA Tournament bids in 12 different seasons, including two out of the last three seasons (not counting 2019-20).

## Hoops In the Heartland

The 2021 Missouri Valley Conference Women's Basketball Tournament will return to the TaxSlayer Center in Moline, Ill., for the sixth-straight year.

Affectionately coined "Hoops in the Heartland," the four-day event (Mar. 11-14) will showcase all 10 Missouri Valley Conference schools as they compete for the Valley's automatic berth into the NCAA Tournament.

The 2021 tournament will mark the 14th-consecutive season in its 39-year history that the event will take place at a neutral site. However last year's event was cancelled due to COVID-19.

The Missouri Valley Conference is one of only seven conferences (out of 32 nationally) where the women's basketball tournament is played at a neutral site, separate from the men's championship (AAC, ACC, Big Ten, Big 12, MVC,

# #THEVALLEYRUNSDEEP



2020-21 Missouri Valley Conference  
CONFERENCE BASKETBALL STATISTICS  
Through games of Dec 13, 2020 (All games)



SCORING OFFENSE	G	W-L	Pts	Avg/G
1. Illinois State	2	2-0	183	91.5
2. Drake	4	2-2	332	83.0
3. Missouri State	4	3-1	314	78.5
4. Indiana State	4	3-1	295	73.8
5. Northern Iowa	5	3-2	362	72.4
6. Bradley	5	3-2	343	68.6
7. Loyola	2	1-1	137	68.5
8. Evansville	2	1-1	131	65.5
9. Southern Illinois	3	2-1	191	63.7
10. Valparaiso	5	3-2	298	59.6

SCORING DEFENSE	G	Pts	Avg/G
1. Illinois State	2	108	54.0
2. Southern Illinois	3	170	56.7
3. Missouri State	4	227	56.8
4. Valparaiso	5	294	58.8
5. Loyola	2	133	66.5
6. Bradley	5	336	67.2
7. Indiana State	4	278	69.5
8. Evansville	2	144	72.0
9. Northern Iowa	5	372	74.4
10. Drake	4	300	75.0

SCORING MARGIN	G	Offense	Defense	Margin
1. Illinois State	2	91.5	54.0	+37.5
2. Missouri State	4	78.5	56.8	+21.8
3. Drake	4	83.0	75.0	+8.0
4. Southern Illinois	3	63.7	56.7	+7.0
5. Indiana State	4	73.8	69.5	+4.2
6. Loyola	2	68.5	66.5	+2.0
7. Bradley	5	68.6	67.2	+1.4
8. Valparaiso	5	59.6	58.8	+0.8
9. Northern Iowa	5	72.4	74.4	-2.0
10. Evansville	2	65.5	72.0	-6.5

FREE THROW PCT	G	FTM	FTA	Pct.
1. Loyola	2	28	33	.848
2. Drake	4	49	59	.831
3. Bradley	5	75	104	.721
4. Evansville	2	32	45	.711
5. Northern Iowa	5	72	103	.699
6. Southern Illinois	3	32	47	.681
7. Illinois State	2	40	59	.678
8. Indiana State	4	38	59	.644
9. Valparaiso	5	47	73	.644
10. Missouri State	4	46	75	.613

FIELD GOAL PERCENTAGE	G	FGM	FGA	Pct.
1. Illinois State	2	62	125	.496
2. Drake	4	122	268	.455
3. Loyola	2	50	111	.450
4. Indiana State	4	114	254	.449
5. Evansville	2	45	103	.437
6. Missouri State	4	123	283	.435
7. Northern Iowa	5	124	306	.405
8. Southern Illinois	3	70	178	.393
9. Bradley	5	117	300	.390
10. Valparaiso	5	106	280	.379

FIELD GOAL PCT DEFENSE	G	FGM	FGA	Pct.
1. Missouri State	4	75	236	.318
2. Illinois State	2	41	125	.328
3. Valparaiso	5	99	294	.337
4. Bradley	5	111	323	.344
5. Evansville	2	54	147	.367
6. Loyola	2	50	133	.376
7. Southern Illinois	3	66	171	.386
8. Indiana State	4	92	235	.391
9. Northern Iowa	5	135	316	.427
10. Drake	4	109	251	.434

3-POINT FG PCT	G	3FGM	3FGA	Pct.
1. Illinois State	2	19	41	.463
2. Evansville	2	9	22	.409
3. Indiana State	4	29	78	.372
4. Drake	4	39	110	.355
5. Northern Iowa	5	42	128	.328
6. Bradley	5	34	107	.318
7. Missouri State	4	22	72	.306
8. Loyola	2	9	31	.290
9. Valparaiso	5	39	137	.285
10. Southern Illinois	3	19	70	.271

3-POINT FG PCT DEFENSE	G	3FGM	3FGA	Pct.
1. Valparaiso	5	19	97	.196
2. Loyola	2	11	52	.212
3. Illinois State	2	11	48	.229
4. Evansville	2	18	76	.237
5. Missouri State	4	24	100	.240
6. Southern Illinois	3	11	42	.262
7. Bradley	5	35	125	.280
8. Drake	4	29	90	.322
9. Indiana State	4	31	87	.356
10. Northern Iowa	5	27	74	.365

REBOUNDING OFFENSE	G	Rebounds	Avg/G
1. Missouri State	4	201	50.2
2. Illinois State	2	100	50.0
3. Bradley	5	219	43.8
4. Southern Illinois	3	126	42.0
5. Indiana State	4	167	41.8
6. Loyola	2	83	41.5
7. Drake	4	161	40.2
8. Evansville	2	79	39.5
9. Northern Iowa	5	175	35.0
10. Valparaiso	5	170	34.0

REBOUNDING DEFENSE	G	Rebounds	Avg/G
1. Illinois State	2	59	29.5
2. Missouri State	4	133	33.2
3. Loyola	2	67	33.5
4. Indiana State	4	139	34.8
5. Drake	4	140	35.0
6. Southern Illinois	3	107	35.7
7. Evansville	2	80	40.0
8. Northern Iowa	5	207	41.4
Bradley	5	207	41.4
10. Valparaiso	5	222	44.4



2020-21 Missouri Valley Conference  
CONFERENCE BASKETBALL STATISTICS  
Through games of Dec 13, 2020 (All games)



REBOUNDING MARGIN	G	Team	Avg.	Opp.	Avg.	Margin
1. Illinois State	2	100	50.0	59	29.5	+20.5
2. Missouri State	4	201	50.2	133	33.2	+17.0
3. Loyola	2	83	41.5	67	33.5	+8.0
4. Indiana State	4	167	41.8	139	34.8	+7.0
5. Southern Illinois	3	126	42.0	107	35.7	+6.3
6. Drake	4	161	40.2	140	35.0	+5.2
7. Bradley	5	219	43.8	207	41.4	+2.4
8. Evansville	2	79	39.5	80	40.0	-0.5
9. Northern Iowa	5	175	35.0	207	41.4	-6.4
10. Valparaiso	5	170	34.0	222	44.4	-10.4

ASSISTS	G	No.	Avg/G
1. Drake	4	92	23.0
2. Missouri State	4	71	17.8
3. Illinois State	2	35	17.5
4. Southern Illinois	3	48	16.0
5. Indiana State	4	63	15.8
6. Loyola	2	31	15.5
7. Northern Iowa	5	67	13.4
8. Bradley	5	63	12.6
9. Valparaiso	5	55	11.0
10. Evansville	2	21	10.5

TURNOVER MARGIN	G	Team	Avg.	Opp.	Avg.	Margin
1. Illinois State	2	34	17.0	43	21.5	+4.5
2. Missouri State	4	60	15.0	75	18.8	+3.8
3. Northern Iowa	5	74	14.8	88	17.6	+2.8
4. Valparaiso	5	87	17.4	94	18.8	+1.4
5. Drake	4	69	17.3	66	16.5	-0.8
6. Indiana State	4	70	17.5	65	16.3	-1.2
7. Bradley	5	68	13.6	61	12.2	-1.4
8. Southern Illinois	3	44	14.7	38	12.7	-2.0
9. Evansville	2	41	20.5	26	13.0	-7.5
10. Loyola	2	42	21.0	24	12.0	-9.0

OFFENSIVE REBOUNDS	G	No.	Avg/G
1. Missouri State	4	69	17.3
2. Southern Illinois	3	41	13.7
3. Indiana State	4	54	13.5
4. Drake	4	53	13.3
5. Bradley	5	61	12.2
6. Loyola	2	23	11.5
7. Illinois State	2	22	11.0
8. Northern Iowa	5	54	10.8
9. Evansville	2	15	7.5
10. Valparaiso	5	32	6.4

DEFENSIVE REB PCT.	G	D-Reb	Opp. OR	D-Reb%
1. Illinois State	2	78	13	.857
2. Missouri State	4	132	32	.805
3. Southern Illinois	3	85	31	.733
4. Drake	4	108	41	.725
5. Indiana State	4	113	43	.724
6. Loyola	2	60	25	.706
7. Bradley	5	158	71	.690
8. Evansville	2	64	32	.667
9. Valparaiso	5	138	71	.660
10. Northern Iowa	5	121	68	.640

BLOCKED SHOTS	G	No.	Avg/G
1. Bradley	5	25	5.0
Evansville	2	10	5.0
3. Missouri State	4	19	4.8
4. Illinois State	2	9	4.5
5. Valparaiso	5	21	4.2
6. Southern Illinois	3	12	4.0
7. Northern Iowa	5	19	3.8
8. Indiana State	4	15	3.8
9. Drake	4	10	2.5
10. Loyola	2	3	1.5

STEALS	G	No.	Avg/G
1. Illinois State	2	22	11.0
2. Missouri State	4	41	10.3
3. Valparaiso	5	50	10.0
4. Indiana State	4	32	8.0
5. Drake	4	31	7.8
6. Northern Iowa	5	38	7.6
7. Bradley	5	30	6.0
8. Evansville	2	11	5.5
Loyola	2	11	5.5
10. Southern Illinois	3	16	5.3

ASSIST/TURNOVER RATIO	G	Ast.	Avg.	T/O	Avg.	Ratio
1. Drake	4	92	23.0	69	17.3	1.3
2. Missouri State	4	71	17.8	60	15.0	1.2
3. Southern Illinois	3	48	16.0	44	14.7	1.1
4. Illinois State	2	35	17.5	34	17.0	1.0
5. Bradley	5	63	12.6	68	13.6	0.9
6. Northern Iowa	5	67	13.4	74	14.8	0.9
7. Indiana State	4	63	15.8	70	17.5	0.9
8. Loyola	2	31	15.5	42	21.0	0.7
9. Valparaiso	5	55	11.0	87	17.4	0.6
10. Evansville	2	21	10.5	41	20.5	0.5

DEFENSIVE REBOUNDS	G	No.	Avg/G
1. Illinois State	2	78	39.0
2. Missouri State	4	132	33.0
3. Evansville	2	64	32.0
4. Bradley	5	158	31.6
5. Loyola	2	60	30.0
6. Southern Illinois	3	85	28.3
7. Indiana State	4	113	28.3
8. Valparaiso	5	138	27.6
9. Drake	4	108	27.0
10. Northern Iowa	5	121	24.2

OFFENSIVE REB PCT.	G	O-Reb	Opp. DR	O-Reb%
1. Missouri State	4	69	101	.406
2. Indiana State	4	54	96	.360
3. Loyola	2	23	42	.354
4. Southern Illinois	3	41	76	.350
5. Drake	4	53	99	.349
6. Illinois State	2	22	46	.324
7. Bradley	5	61	136	.310
8. Northern Iowa	5	54	139	.280
9. Evansville	2	15	48	.238
10. Valparaiso	5	32	151	.175



2020-21 Missouri Valley Conference  
CONFERENCE BASKETBALL STATISTICS  
Through games of Dec 13, 2020 (All games)



3-POINT FG MADE	G	No.	Avg/G
1. Drake	4	39	9.8
2. Illinois State	2	19	9.5
3. Northern Iowa	5	42	8.4
4. Valparaiso	5	39	7.8
5. Indiana State	4	29	7.3
6. Bradley	5	34	6.8
7. Southern Illinois	3	19	6.3
8. Missouri State	4	22	5.5
9. Loyola	2	9	4.5
Evansville	2	9	4.5



2020-21 Missouri Valley Conference  
CONFERENCE BASKETBALL STATISTICS  
Through games of Dec 13, 2020 (All games)



Team	Conference	Pct.	PF	PA	Overall	Pct.	PF	PA	Current unbeaten streak
Illinois State	0-0	.000	0.0	0.0	2-0	1.000	91.5	54.0	Indiana State -- 3
Missouri State	0-0	.000	0.0	0.0	3-1	.750	78.5	56.8	Southern Illinois -- 2
Indiana State	0-0	.000	0.0	0.0	3-1	.750	73.8	69.5	Illinois State -- 2
Southern Illinois	0-0	.000	0.0	0.0	2-1	.667	63.7	56.7	Northern Iowa -- 2
Northern Iowa	0-0	.000	0.0	0.0	3-2	.600	72.4	74.4	Evansville -- 1
Bradley	0-0	.000	0.0	0.0	3-2	.600	68.6	67.2	Drake -- 1
Valparaiso	0-0	.000	0.0	0.0	3-2	.600	59.6	58.8	Valparaiso -- 1
Drake	0-0	.000	0.0	0.0	2-2	.500	83.0	75.0	Missouri State -- 1
Loyola	0-0	.000	0.0	0.0	1-1	.500	68.5	66.5	Bradley -- 1
Evansville	0-0	.000	0.0	0.0	1-1	.500	65.5	72.0	

TEAM SUMMARIES	G	PF-PA	Avg score	Margin	FG-FGA	Pct.	3FG-FGA	Pct.	FT-FTA	Pct.	RebF	RebA	Margin
Bradley	5	343-336	68.6-67.2	+1.4	117-300	.390	34-107	.318	75-104	.721	219	207	+2.4
Drake	4	332-300	83.0-75.0	+8.0	122-268	.455	39-110	.355	49-59	.831	161	140	+5.2
Evansville	2	131-144	65.5-72.0	-6.5	45-103	.437	9-22	.409	32-45	.711	79	80	-0.5
Illinois State	2	183-108	91.5-54.0	+37.5	62-125	.496	19-41	.463	40-59	.678	100	59	+20.5
Indiana State	4	295-278	73.8-69.5	+4.3	114-254	.449	29-78	.372	38-59	.644	167	139	+7.0
Loyola	2	137-133	68.5-66.5	+2.0	50-111	.450	9-31	.290	28-33	.848	83	67	+8.0
Missouri State	4	314-227	78.5-56.8	+21.8	123-283	.435	22-72	.306	46-75	.613	201	133	+17.0
Northern Iowa	5	362-372	72.4-74.4	-2.0	124-306	.405	42-128	.328	72-103	.699	175	207	-6.4
Southern Illinois	3	191-170	63.7-56.7	+7.0	70-178	.393	19-70	.271	32-47	.681	126	107	+6.3
Valparaiso	5	298-294	59.6-58.8	+0.8	106-280	.379	39-137	.285	47-73	.644	170	222	-10.4

ATTENDANCE	Home	Average	Away	Average	Neutral	Average	Total	Average
Bradley	3-0	0	2-50	25	0-0	0	5-50	10
Drake	1-116	116	3-159	53	0-0	0	4-275	69
Evansville	1-0	0	1-201	201	0-0	0	2-201	100
Illinois State	1-0	0	1-0	0	0-0	0	2-0	0
Indiana State	2-160	80	2-103	52	0-0	0	4-263	66
Loyola	0-0	0	2-0	0	0-0	0	2-0	0
Missouri State	1-1006	1006	1-0	0	2-0	0	4-1006	252
Northern Iowa	2-465	232	3-416	139	0-0	0	5-881	176
Southern Illinois	3-0	0	0-0	0	0-0	0	3-0	0
Valparaiso	1-79	79	4-468	117	0-0	0	5-547	109
Totals	15-1826	122	19-1397	74	2-0	0	36-3223	90





2020-21 Missouri Valley Conference  
INDIVIDUAL BASKETBALL STATISTICS  
Through games of Dec 13, 2020 (All games)



To be ranked, a player must appear in at least 75.0% of their team's games.

SCORING								REBOUNDING							
	Cl	G	FG	3FG	FT	Pts	Avg/G		Cl	G	Off	Def	Total	Avg/G	
1. Petree, Lasha-BRAD	Jr	5	34	10	27	105	21.0	1. Brockmeyer, Abby-SIU	Sr	3	8	21	29	9.7	
2. Berg, Grace-DU	So	4	30	3	9	72	18.0	2. Rice, Ellie-LUC	Sr	2	2	15	17	8.5	
3. Collier, Kierra-DU	Jr	4	25	14	7	71	17.8	3. Franklin, Jasmine-MSU	Jr	4	11	22	33	8.3	
4. Crompton, Mary-ILS	So	2	10	9	5	34	17.0	4. McChristine, Jamyra-INS	Sr	4	17	15	32	8.0	
5. Monahan, Maddie-DU	Sr	4	23	7	11	64	16.0	Day, Allison-LUC	Jr	2	5	11	16	8.0	
6. Haack, Gabi-BRAD	Sr	5	22	14	20	78	15.6	Feit, Abby-UE	So	2	4	12	16	8.0	
7. Feit, Abby-UE	So	2	11	4	4	30	15.0	7. Haack, Gabi-BRAD	Sr	5	8	31	39	7.8	
8. Calip, Brice-MSU	Sr	4	20	5	14	59	14.8	8. Katcher, Adrianna-SIU	Fr	3	5	18	23	7.7	
9. Weinman, Carrie-Valpo	Jr	5	27	12	5	71	14.2	9. Bullman, Kate-ILS	Fr	2	7	8	15	7.5	
10. Chandler, Maya-LUC	Fr	2	9	0	10	28	14.0	10. White, Nyjah-BRAD	Sr	4	7	21	28	7.0	
11. Latu, Essy-INS	Jr	4	18	15	3	54	13.5	Stephens, Rylie-UE	Fr	2	3	11	14	7.0	
White, Grace-Valpo	Sr	4	21	4	8	54	13.5	12. White, Grace-Valpo	Sr	4	8	19	27	6.8	
13. Silvey, Makenzie-SIU	Sr	3	16	6	2	40	13.3	Burich, Monica-DU	Sr	4	10	17	27	6.8	
14. White, Nyjah-BRAD	Sr	4	21	0	10	52	13.0	14. Hipp, Abby-MSU	Sr	3	10	9	19	6.3	
15. RUCKER, Karli-UNI	Sr	5	22	6	14	64	12.8	15. Petree, Mahri-BRAD	So	5	7	24	31	6.2	
16. Brockmeyer, Abby-SIU	Sr	3	14	1	9	38	12.7	GUNNELS, Bre-UNI	Sr	5	10	21	31	6.2	
17. Griffin, A'Niah-UE	Jr	2	10	1	4	25	12.5	17. Griffin, A'Niah-UE	Jr	2	0	12	12	6.0	
Moore, Terrion-ILS	Jr	2	9	2	5	25	12.5	Koudelka, Lexy-ILS	Jr	2	2	10	12	6.0	
19. Anderson, Caitlin-INS	So	4	20	0	9	49	12.3	19. Berg, Grace-DU	So	4	8	15	23	5.8	
20. Walker, Gabby-SIU	Sr	3	12	0	12	36	12.0	Westerfeld, Hattie-INS	So	4	6	17	23	5.8	
Rice, Ellie-LUC	Sr	2	11	2	0	24	12.0								
22. MAAHS, Megan-UNI	Sr	5	23	3	10	59	11.8								
23. Hipp, Abby-MSU	Sr	3	16	1	2	35	11.7								
24. Wilson, Sydney-MSU	Jr	4	16	2	12	46	11.5								
25. Redmond, Juliunn-ILS	Sr	2	8	2	4	22	11.0								
26. FINLEY, Kam-UNI	Jr	5	19	5	7	50	10.0								
27. McChristine, Jamyra-INS	Sr	4	17	0	5	39	9.8								
28. GREEN, Emerson-UNI	Fr	5	16	9	7	48	9.6								
29. Pitzer, Sommer-INS	So	4	13	7	5	38	9.5								
30. Frederick, Shay-Valpo	Jr	5	14	7	11	46	9.2								

FIELD GOAL PCT						ASSISTS				
	Cl	G	FGM	FGA	Pct.		Cl	G	No. Avg/G	
1. Crompton, Mary-ILS	So	2	10	15	.667	1. Collier, Kierra-DU	Jr	4	27 6.8	
Tanin, Sitori-LUC	Fr	2	6	9	.667	2. Saylor, Paige-ILS	Sr	2	13 6.5	
3. Griffin, A'Niah-UE	Jr	2	10	16	.625	3. Rice, Ellie-LUC	Sr	2	11 5.5	
4. Love, Quierra-SIU	Fr	3	10	17	.588	Redmond, Juliunn-ILS	Sr	2	11 5.5	
5. Koudelka, Lexy-ILS	Jr	2	7	12	.583	5. Koenig, Tatum-BRAD	Jr	5	26 5.2	
6. Stephens, Rylie-UE	Fr	2	8	14	.571	6. Newman, Anna-UE	Jr	2	9 4.5	
7. Feit, Abby-UE	So	2	11	20	.550	7. Frederick, Shay-Valpo	Jr	5	22 4.4	
8. MAAHS, Megan-UNI	Sr	5	23	42	.548	8. Monahan, Maddie-DU	Sr	4	17 4.3	
9. Anderson, Caitlin-INS	So	4	20	38	.526	9. Bhinhar, Mya-MSU	Jr	4	16 4.0	
10. Rice, Ellie-LUC	Sr	2	11	21	.524	10. Hunter, Marie-INS	Sr	4	15 3.8	
11. Franklin, Jasmine-MSU	Jr	4	15	29	.517	11. Silvey, Makenzie-SIU	Sr	3	11 3.7	
12. Wilson, Sydney-MSU	Jr	4	16	31	.516	12. RUCKER, Karli-UNI	Sr	5	18 3.6	
Hipp, Abby-MSU	Sr	3	16	31	.516	13. McCallister, Payton-SIU	Jr	3	10 3.3	
14. Monahan, Maddie-DU	Sr	4	23	45	.511	14. Pitzer, Sommer-INS	So	4	13 3.3	
15. Berg, Grace-DU	So	4	30	60	.500	Calip, Brice-MSU	Sr	4	13 3.3	
McChristine, Jamyra-INS	Sr	4	17	34	.500					
Day, Allison-LUC	Jr	2	7	14	.500					



2020-21 Missouri Valley Conference  
INDIVIDUAL BASKETBALL STATISTICS  
Through games of Dec 13, 2020 (All games)



FREE THROW PCT					
	Cl	G	FTM	FTA	Pct.
1. Monahan, Maddie-DU	Sr	4	11	11	1.000
Chandler, Maya-LUC	Fr	2	10	10	1.000
3. Berg, Grace-DU	So	4	9	10	.900
4. Wilson, Sydney-MSU	Jr	4	12	15	.800
Griffin, A'Niah-UE	Jr	2	4	5	.800
Meyer, Alexis-LUC	Sr	2	4	5	.800
Saylor, Paige-ILS	Sr	2	4	5	.800
8. Petree, Lasha-BRAD	Jr	5	27	34	.794
9. Newman, Anna-UE	Jr	2	11	14	.786
10. GUNNELS, Bre-UNI	Sr	5	25	32	.781
11. RUCKER, Karli-UNI	Sr	5	14	18	.778
12. Haack, Gabi-BRAD	Sr	5	20	26	.769
13. White, Grace-Valpo	Sr	4	8	11	.727
14. Crompton, Mary-ILS	So	2	5	7	.714
Moore, Terrion-ILS	Jr	2	5	7	.714

STEALS		Cl	G	No.	Avg/G
1.	Weinman, Carie-Valpo	Jr	5	18	3.6
2.	Moore,Terrion-ILS	Jr	2	5	2.5
3.	Anderson,Caitlin-INS	So	4	9	2.3
4.	Collier,Kierra-DU	Jr	4	8	2.0
	McChristine,Jamyra-INS	Sr	4	8	2.0
6.	FINLEY, Kam-UNI	Jr	5	9	1.8
7.	Franklin,Jasmine-MSU	Jr	4	7	1.8
	White, Grace-Valpo	Sr	4	7	1.8
	Wilson,Sydney-MSU	Jr	4	7	1.8
10.	Calip,Brice-MSU	Sr	4	6	1.5
	Hunter,Marie-INS	Sr	4	6	1.5
	Tanin, Sitori-LUC	Fr	2	3	1.5
	Feit, Abby-UE	So	2	3	1.5
	Redmond, Juliunn-ILS	Sr	2	3	1.5
	Call, Cameron-ILS	So	2	3	1.5
	Saylor,Paige-ILS	Sr	2	3	1.5
	Rice, Ellie-LUC	Sr	2	3	1.5

3-POINT FG PCT					
	Cl	G	3FG	FGA	Pct.
1. Crompton, Mary-ILS	So	2	9	12	.750
2. Stephens, Rylie-UE	Fr	2	2	3	.667
3. Feit, Abby-UE	So	2	4	7	.571
4. Collier, Kierra-DU	Jr	4	14	26	.538
5. Brown, Anna-LUC	So	2	4	8	.500
6. Latu, Essy-INS	Jr	4	15	33	.455
7. Weinman, Carie-Valpo	Jr	5	12	27	.444
Lalic, Natalia-INS	Jr	3	4	9	.444
9. Call, Cameron-ILS	So	2	3	7	.429
10. Love, Quierra-SIU	Fr	3	5	12	.417
11. KROEGER, Nicole-UNI	Sr	5	9	22	.409
12. Haack, Gabi-BRAD	Sr	5	14	35	.400
Moore, Terrion-ILS	Jr	2	2	5	.400
14. GREEN, Emerson-UNI	Fr	5	9	23	.391
15. McCallister, Payton-SIU	Jr	3	5	13	.385
Calip, Brice-MSU	Sr	4	5	13	.385

3-POINT FG MADE		Cl	G	3FG	Avg/G
1.	Crompton,Mary-ILS	So	2	9	4.5
2.	Latu,Essy-INS	Jr	4	15	3.8
3.	Collier,Kierra-DU	Jr	4	14	3.5
4.	Haack, Gabi-BRAD	Sr	5	14	2.8
5.	Weinman, Carie-Valpo	Jr	5	12	2.4
6.	Petree, Lasha-BRAD	Jr	5	10	2.0
	Silvey, Makenzie-SIU	Sr	3	6	2.0
	Feit, Abby-UE	So	2	4	2.0
	Brown, Anna-LUC	So	2	4	2.0
10.	KROEGER, Nicole-UNI	Sr	5	9	1.8
	GREEN, Emerson-UNI	Fr	5	9	1.8
12.	Monahan,Maddie-DU	Sr	4	7	1.8
	Pitzer,Sommer-INS	So	4	7	1.8
14.	McCallister, Payton-SIU	Jr	3	5	1.7
	Love, Quierra-SIU	Fr	3	5	1.7

BLOCKED SHOTS				
	Cl	G	No.	Avg/G
1. Feit, Abby-UE	So	2	5	2.5
2. Petree, Lasha-BRAD	Jr	5	11	2.2
3. Bullman, Kate-ILS	Fr	2	4	2.0
4. Brockmeyer, Abby-SIU	Sr	3	5	1.7
5. White, Grace-Valpo	Sr	4	5	1.3
Jackson, Abigayle-MSU	Sr	4	5	1.3
7. Wolf, Cynthia-UNI	Jr	5	6	1.2
Morrison, Caitlin-Valpo	Sr	5	6	1.2
9. Franklin, Jasmine-MSU	Jr	4	4	1.0
Westerfeld, Hattie-INS	So	4	4	1.0
Bair, Maggie-DU	So	4	4	1.0
Gartner, Emily-MSU	Sr	4	4	1.0
Katcher, Adrianna-SIU	Fr	3	3	1.0
Glanton, Mya-INS	Fr	3	3	1.0
Day, Allison-LUC	Jr	2	2	1.0
Saylor, Paige-ILS	Sr	2	2	1.0
Poland, Jada-UE	Sr	2	2	1.0
Gietzel, Ally-ILS	So	2	2	1.0
Partee, Nataya-UE	Jr	2	2	1.0

ASSIST/TURNOVER RATIO				
	Cl	G	Ast.	T/O Ratio
1. Redmond, Juliunn-ILS	Sr	2	11	3 3.7
2. McCallister, Payton-SIU	Jr	3	10	3 3.3
3. Koenig, Tatum-BRAD	Jr	5	26	8 3.3
4. Collier, Kierra-DU	Jr	4	27	10 2.7
5. Calip, Brice-MSU	Sr	4	13	5 2.6
6. Monahan, Maddie-DU	Sr	4	17	7 2.4
7. Anderson, Caitlin-INS	So	4	12	6 2.0
8. Bhinhar, Mya-MSU	Jr	4	16	9 1.8
9. Saylor, Paige-ILS	Sr	2	13	8 1.6
10. Silvey, Makenzie-SIU	Sr	3	11	7 1.6
11. Frederick, Shay-Valpo	Jr	5	22	15 1.5
12. Pitzer, Sommer-INS	So	4	13	9 1.4
13. Rice, Ellie-LUC	Sr	2	11	8 1.4
14. Manning, Sydney-MSU	Jr	4	12	9 1.3
15. RUCKER, Karli-UNI	Sr	5	18	16 1.1
Love, Quierra-SIU	Fr	3	9	8 1.1
Newman, Anna-UE	Jr	2	9	8 1.1



2020-21 Missouri Valley Conference  
INDIVIDUAL BASKETBALL STATISTICS  
Through games of Dec 13, 2020 (All games)



OFFENSIVE REBOUNDS	Cl	G	No.	Avg/G
1. McChristine, Jamyra-INS	Sr	4	17	4.3
2. Bullman, Kate-ILS	Fr	2	7	3.5
3. Hipp, Abby-MSU	Sr	3	10	3.3
4. Franklin, Jasmine-MSU	Jr	4	11	2.8
5. Brockmeyer, Abby-SIU	Sr	3	8	2.7
6. Burich, Monica-DU	Sr	4	10	2.5
Tanin, Sitori-LUC	Fr	2	5	2.5
Day, Allison-LUC	Jr	2	5	2.5
9. Glanton, Mya-INS	Fr	3	7	2.3
Walker, Gabby-SIU	Sr	3	7	2.3
11. GUNNELS, Bre-UNI	Sr	5	10	2.0
Wolf, Cynthia-UNI	Jr	5	10	2.0
Folks, Adrian-INS	So	4	8	2.0
Berg, Grace-DU	So	4	8	2.0
White, Grace-Valpo	Sr	4	8	2.0
Feit, Abby-UE	So	2	4	2.0

DEFENSIVE REBOUNDS	Cl	G	No.	Avg/G
1. Rice, Ellie-LUC	Sr	2	15	7.5
2. Brockmeyer, Abby-SIU	Sr	3	21	7.0
3. Haack, Gabi-BRAD	Sr	5	31	6.2
4. Katcher, Adrianna-SIU	Fr	3	18	6.0
Feit, Abby-UE	So	2	12	6.0
Griffin, A'Niah-UE	Jr	2	12	6.0
7. Franklin, Jasmine-MSU	Jr	4	22	5.5
Stephens, Rylie-UE	Fr	2	11	5.5
Day, Allison-LUC	Jr	2	11	5.5
10. White, Nyjah-BRAD	Sr	4	21	5.3
11. Morrison, Caitlin-Valpo	Sr	5	26	5.2
12. Koudelka, Lexy-ILS	Jr	2	10	5.0
13. Petree, Mahri-BRAD	So	5	24	4.8
14. White, Grace-Valpo	Sr	4	19	4.8
15. Newman, Anna-UE	Jr	2	9	4.5
Redmond, Juliunn-ILS	Sr	2	9	4.5

MINUTES PLAYED	Cl	G	No.	Avg/G
1. Haack, Gabi-BRAD	Sr	5	181	36.2
2. Rice, Ellie-LUC	Sr	2	70	35.0
3. Koenig, Tatum-BRAD	Jr	5	173	34.6
4. Frederick, Shay-Valpo	Jr	5	168	33.6
5. Newman, Anna-UE	Jr	2	65	32.5
6. Petree, Lasha-BRAD	Jr	5	162	32.4
7. Silvey, Makenzie-SIU	Sr	3	97	32.3
8. Weinman, Carrie-Valpo	Jr	5	161	32.2
9. White, Grace-Valpo	Sr	4	128	32.0
10. Monahan, Maddie-DU	Sr	4	121	30.3
11. RUCKER, Karli-UNI	Sr	5	150	30.0
White, Nyjah-BRAD	Sr	4	120	30.0
Berg, Grace-DU	So	4	120	30.0
14. Saylor, Paige-ILS	Sr	2	59	29.5
15. Collier, Kierra-DU	Jr	4	117	29.3
16. Galanopoulos, Sam-LUC	So	2	58	29.0
Griffin, A'Niah-UE	Jr	2	58	29.0
18. Brockmeyer, Abby-SIU	Sr	3	86	28.7
19. FINLEY, Kam-UNI	Jr	5	141	28.2
20. Anderson, Caitlin-INS	So	4	112	28.0
Love, Quierra-SIU	Fr	3	84	28.0
22. KROEGER, Nicole-UNI	Sr	5	138	27.6
23. Feit, Abby-UE	So	2	55	27.5
24. Pitzer, Sommer-INS	So	4	109	27.3
25. Calip, Brice-MSU	Sr	4	107	26.8
26. VanKempfen, Cara-Valpo	So	5	133	26.6
27. Moore, Terrion-ILS	Jr	2	53	26.5
28. MAAHS, Megan-UNI	Sr	5	132	26.4
29. Poland, Jada-UE	Sr	2	52	26.0
Chandler, Maya-LUC	Fr	2	52	26.0



2020-21 Missouri Valley Conference  
INDIVIDUAL BASKETBALL STATISTICS  
Through games of Dec 13, 2020 (All games)



TEAM IDENTIFICATION	Team ID
Bradley	BRAD
Drake	DU
Evansville	UE
Illinois State	ILS
Indiana State	INS
Loyola	LUC
Missouri State	MSU
Northern Iowa	UNI
Southern Illinois	SIU
Valparaiso	VALPO