



2019-20 Standings -- As of Mon., Jan. 13

	MISSOURI VALLEY				OVERALL			
	Record	Pct.	PF	PA	Record	Pct.	PF	PA
#17/19 Missouri State	4-0	1.000	76.0	68.2	14-2	.875	77.2	65.6
Bradley	3-0	1.000	83.0	62.3	12-2	.857	74.5	60.6
Loyola Chicago	3-1	.750	63.0	58.8	12-3	.800	71.9	61.7
Illinois State	2-1	.667	75.0	67.7	10-4	.714	70.6	61.5
Drake	2-1	.667	81.3	73.7	10-5	.667	80.4	69.9
Valparaiso	2-2	.500	70.5	67.5	10-5	.667	68.1	63.6
Northern Iowa	1-2	.333	71.0	80.3	9-5	.643	70.9	65.1
Southern Illinois	1-3	.250	59.5	58.8	9-6	.600	71.8	63.7
Evansville	0-4	.000	59.0	80.5	3-12	.200	61.9	72.3
Indiana State	0-4	.000	62.8	76.8	2-14	.125	61.7	69.7

• MVC Home: 9-9 • Non-Conference: 73-40 • Home: 39-9 • Away: 28-25 • Neutral: 6-6 • Top-25: 1-4 • •

Recent Results/ Upcoming Schedule

Friday, January 10

Valparaiso at Indiana State VU, 75-56*
 UNI at Southern Illinois UNI, 60-57*
 Loyola at Evansville LUC, 71-61*
 Drake at #18 Missouri State MSU, 69-67*
 Illinois State at Bradley BRAD, 76-61*

Sunday, January 12

Loyola at Indiana State LUC, 58-51*
 Valparaiso at Evansville VU, 88-66*
 UNI at #18 Missouri State MSU, 80-66*
 Drake at Southern Illinois DU, 73-65*

Friday, January 17

Bradley at Loyola (ESPN+) 3 PM*
 #17 Missouri State at So. Illinois (ESPN+) 6 PM*
 Illinois State at Valparaiso (ESPN+) 6 PM*
 Indiana State at Drake (ESPN+) 6 PM*
 Evansville at UNI (ESPN3) 6:30 PM*

Sunday, January 19

Bradley at Valparaiso (ESPN+) 1 PM*
 Illinois State at Loyola (ESPN+) 1 PM*
 Indiana State at UNI (ESPN+) 2 PM*
 Evansville at Drake (ESPN+) 2 PM*

ALL TIMES CENTRAL
 * MVC Contest



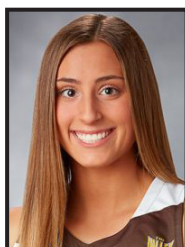
MVC Player of the Week

Lasha Petree, So., G, Bradley

Petree scored a game-high 24 points and also collected four rebounds, two assists, two steals and a career-high six blocked shots to help Bradley to a 76-61 victory over I-74 rival Illinois State Friday. She scored 15 of her game-high 24 points in the second half, including 10 points over the final 12 minutes to help Bradley outscore the Redbirds 26-8 during that stretch. Her six blocks tied for the highest total in the MVC this season and also matched the fourth-best single game total

in Bradley history. Petree was the first Bradley player with six or more blocks in a game since December 2015. She was 5-for-7 from the field in the second half as she helped Bradley to its school record 13th straight home victory and ninth consecutive MVC home win.

Other Notable Performances: Becca Hittner (DU); CeCe Mayo (INS); Abby O'Connor (LUC); Sydney Manning (MSU); Nicole Martin (SIU); Shay Frederick (VALPO)



MVC Newcomer of the Week

Carie Weinman, R-So., G, Valparaiso

Valpo's Carie Weinman averaged 14 points on 64.7% shooting, 3.5 rebounds and 4.0 steals per game in Valpo's pair of MVC wins last weekend, helping the Crusaders earn their first two-game sweep of an MVC weekend. She started the weekend with nine points on 4-of-6 shooting and four rebounds in the win at Indiana State, and then led the way against Evansville with 19 points on 7-of-11 shooting, including four three-pointers. Weinman also set a career best with six steals in the win

over the Purple Aces.

Other Notable Performances: Kierra Collier (DU); Abby Feit (UE); JuJu Redmond (ILS); CeCe Mayo (INS)

NOTEWORTHY

In addition to the league's Player and Newcomer of the Week selections, several conference players had notable performances, including:

Becca Hittner (DU) - Senior Becca Hittner helped Drake split its first weekend of Missouri Valley Conference road action. Hittner averaged 18.0 points, 4.5 rebounds and 4.0 assists while shooting 41.2 percent (7-of-17) from the floor and an impressive 95.2 percent (20-of-21) at the free throw line. In the Bulldogs' win at SIU, Hittner scored a game-high 20 points, including making 8-of-8 from the free throw line, and added five rebounds and handed out three assists. Against No. 20/18 Missouri State, she scored 16 points, including making 12-of-13 free throws and added a season-high five assists with four rebounds, two blocks and one steal. Hittner is averaging 17.5 points per game.

CeCe Mayo (INS) - CeCe Mayo put together her best string of games in a Sycamore uniform over the weekend against Valparaiso and Loyola. The junior moved into a starting role and averaged 14 points, six rebounds and 2.5 steals per game over the course of the two games. During Friday's effort against Valparaiso, Mayo tallied 13 points to go along with four boards and four steals. Sunday's game was even better as she recorded a career-high 15 points and eight rebounds while also dishing out two assists. She also averaged her season-best 25.5 minutes per game.

Abby O'Connor (LUC) - Loyola junior guard/forward Abby O'Connor averaged a double-double (15.0 points, 10.5 rebounds) as the Maroon & Gold swept a pair of games in The Hoosier State over the weekend. In Friday's 71-61 win at Evansville, O'Connor turned in a dominant second-half performance, erupting for 19 of her game-high 21 points (7-13 FGs, 3-5 3FGs, 4-5 FTs). She also collected 12 rebounds against the Purple Aces, in addition to two assists, a block, and a steal, en route to her team-best fourth double-double of the season. The South Bend, Ind. product narrowly missed out on repeating the feat two days later against Indiana State, finishing with nine points (3-11 FGs, 1-6 3FGs, 2-4 FTs) and nine rebounds in a 58-51 victory over the Sycamores. O'Connor, who enters the week just seven points shy of 1,000 for her career, currently ranks eighth in the MVC in scoring (15.0 ppg) and is averaging 9.8 rebounds since the start of league play, a mark that is tied for The Valley lead.

Sydney Manning (MSU) - Sydney Manning hit a buzzer-beating 3-pointer Friday to hand the Lady Bears a 69-67 win over Drake, and averaged a team-high 11 points, 4.5 rebounds, 3.0 assists, 1.5 steals and 1.0 blocks per game in a pair of MSU wins. Manning scored a career-high 16 points against the Bulldogs, shooting 5-for-10 overall and 4-for-8 from beyond the arc, adding six boards, three assists, two steals and a block in 24 minutes. In Sunday's win against UNI, Manning hit two more treys to finish with six points, three boards and three assists in a career-high 27 minutes. She shot 50 percent from beyond the arc on the weekend, including Friday's game-winner that landed in the No. 7 spot on Sportscenter's Top 10 that night.

Nicole Martin (SIU) - Nicole Martin averaged 14.0 points, 7.5 rebounds and 1.5 steals in SIU's two home games last weekend. The two-time All-MVC first team selection finished with nine points and a season-best 11 rebounds against the UNI Panthers on Friday night and followed with a team-best 19 points, four boards and three steals against the Drake Bulldogs on Sunday. Martin moved into 13th place on SIU's all-time scorers list with her 19 points against Drake.

Shay Frederick (VALPO) - Frederick averaged a team-best 15.5 points/game on 60% shooting and a team-high 5 assists/game, helping to lead Valpo to its first two-game sweep of an MVC weekend since joining the conference. The sophomore posted 13 points and five assists in Friday's win at Indiana State, and then tallied 18 points - her second-highest output of the season - and five assists in Sunday's win at Evansville. Frederick also matched her career high with six steals against the Purple Aces, which led to 11 points.

Kierra Collier (DU) - Kierra Collier averaged 8.0 points, 2.0 assists and 1.5 rebounds while shooting 54.5 percent from the field in her first MVC road games. In the SIU win, she scored 11 points with seven coming after halftime as the Bulldogs completed the comeback for their first league road win.

Abby Feit (UE) - In a pair of conference contests, freshman Abby Feit put together two more impressive performances. On the weekend, Feit averaged 13.5 points and 8.5 boards, while adding 2 assists, 2 blocks, and 2.5 steals per game. Against Loyola, Feit scored 13 points and pulled down 4 rebounds as the Aces battled, but fell to the Ramblers. On Sunday, Feit scored 14 points, while recording a game-high 13 rebounds as Evansville fell to Valpo. The freshman currently leads the Aces in scoring, rebounding, blocks, and minutes played.

JuJu Redmond (ILS) - Illinois State's JuJu Redmond led the 'Birds at Bradley on Friday, coming off the bench to record 20 points, while grabbing four boards and adding an assist. It was the third time this season Redmond led the team in total points, as the junior shot 7-of-12 (.583) from the floor and 3-of-4 (.750) from behind the three-point line. Redmond is averaging 8.5 points and 5.0 rebounds per game in her debut season for the Redbirds.

PLAYERS OF THE WEEK

DATE	PLAYER	SCHOOL
N11	Sara Rhine	Drake
N18	Alexa Willard	Missouri State
N25	Gabi Haack	Bradley
D2	Jasmine Franklin	Missouri State
D9	Lasha Petree	Bradley
D16	Jasmine Franklin	Missouri State
D23	Lexi Wallen	Illinois State
J6	Lasha Petree	Bradley
J13	Lasha Petree	Bradley
J20		
J27		
F3		
F10		
F17		
F24		
M2		
M9		

NEWCOMERS OF THE WEEK

DATE	PLAYER	SCHOOL
N11	Abby Feit	Evansville
N18	Kristina Cavey	UNI
N25	Sam Galanopoulos	Loyola Chicago
D2	Carie Weinman	Valparaiso
D9	Jamyra McChristine	Indiana State
D16	Lola Bracy	Evansville
D23	Kristina Cavey	UNI
J6	Mary Crompton	Illinois State
J13	Carie Weinman	Valparaiso
J20		
J27		
F3		
F10		
F17		
F24		
M2		
M9		

MVC Players and Newcomers of the Week are selected each week during the women's basketball season. The players are announced on Monday afternoon and appear in a weekly press release. Nominees are provided by each school's sports information contact and voted on by a panel appointed by the league office.

Top of the Heap

Missouri State and Bradley are the only two remaining teams perfect in MVC action. The Lady Bears sit 4-0 in league play, while the Braves are off to a 3-0 league start. Missouri State will travel to Southern Illinois Friday, while Bradley will travel to Loyola and Valpo.

Best Starts in MVC?

Below is a look at the best league starts for Missouri State and Bradley (includes each school's top performance only):

Rec. Team (Year)	Loss	Final
12-0 Missouri St. (95-96)	at ILS	1st (16-2)
4-0 Bradley (08-09)	at UNI	4th (11-7)

Lady Bears No. 1

Missouri State ascended to the top spot in the NCAA RPI the morning of Jan. 11, becoming the first MVC team on record to be ranked No. 1 in the metric. The Lady Bears own road wins over Oklahoma (39th), South Dakota (40th), Minnesota (57th) and Boise State (94th), as well as home victories against Drake (23rd) and UNI (34th) as of the Jan. 13 ratings. MSU's two losses on the season were on the road at Oregon State (5th) and Gonzaga (7th).

Quadrant 1 Wins

Missouri State enters the week with four Q1 wins on the season, ranking 8th nationally. The Lady Bears join UConn, Gonzaga, Creighton and DePaul as the only non-Power Five teams with at least four Q1 wins.

RPI Update

The latest weekly installment of the NCAA RPI Report (Jan. 13) has five Valley teams that rank in the top-100, including three in the top 35, five in the Top 100 and eight in the Top 175. Missouri State moved to No. 1 in the RPI over the weekend. Drake comes in at No. 23 and UNI No. 34. Illinois State (83), Southern Illinois (92), Bradley (106), Loyola Chicago (117) and Valparaiso (173) also appear in the Top 175.

The Valley joins the Power Five leagues and the Big East as the only leagues to have three Top 35 teams.

Team	RPI
Missouri State	1
Drake	23
UNI	34
Illinois State	83
Southern Illinois	92
Bradley	106
Loyola Chicago	117
Valparaiso	173
Indiana State	274
Evansville	327

Historic Conference RPI

The Valley ranks seventh nationally in the NCAA's conference RPI report (Jan. 13). The Valley sits behind the Pac-12, Big Ten, ACC, SEC, Big 12 and Big East entering this week.

The Valley record for RPI in a season is 8th (2008 & 2011).

Conference RPI

1.	Pac-12
2.	Big Ten
3.	ACC
4.	Big 12
5.	SEC
6.	Big East
7.	Missouri Valley
8.	Ivy League
9.	American
10.	MAC

Home Sweet Home

Five MVC teams are unbeaten at home entering the week: Bradley (7-0), Drake (6-0), Illinois State (8-0), Missouri State (8-0) and UNI (4-0) have unblemished records on their home courts this season.

The Valley currently has three teams with a home win streak of 12 or more. Bradley has won a program-record 13-straight at home and is tied for the fifth-longest streak nationally. Drake and Illinois State each have a 12-game win streak at home, tied for 11th nationally.

Ramblin' on the Road

Loyola Chicago leads the nation with a perfect 8-0 road record this season, following wins at Evansville and Indiana State over the weekend. UConn is second with a mark of 7-0. The Ramblers are one of just 11 teams in the nation to remain perfect on the road (UConn, South Carolina, UCLA, Mississippi State, Northwestern, Texas A&M, Tulane, West Virginia, Baylor and Texas Tech).

Power Five Wins

The MVC secured nine wins over Power Five programs during the non-conference schedule. The Valley went 9-12 vs. Power Five teams, tripling last season's win total of three. The Valley has a winning record against the Big 12 (3-2) and SEC (3-1) and sits 3-7 vs. the Big Ten and 0-2 vs. the Pac-12. The average margin of victory in the nine wins is 8.7 points per game. Missouri State and UNI each had three, Drake two, and Illinois State one.

MVC's Wins Over Power Five Teams

Iowa State at Drake, W - 86-81
Missouri State at Oklahoma, W - 96-90
Illinois State at Illinois, W - 74-58
Iowa at UNI, W - 88-66
Missouri State at Minnesota, W - 77-69
UNI at Missouri, W - 78-73
Drake vs. Auburn, W - 83-82
Missouri at Missouri State, W - 79-72
UNI at Iowa State, W - 71-63

New Non-Con Record

Valley women's basketball reached 73 wins in non-conference play. Only five times previously since the 1992-93 season has the MVC claimed 60+ non-league wins in a season. This year's 73 wins sets a new league record for most non-con wins, surpassing 66 wins in 2009-10. This season marks the second-best non-conference win percentage in league history, trailing only the 1994-95 season.

MVC Top Non-Conference Records (by Winning %)

1.	1994-95	54-28 (.659)
2.	2019-20	73-40 (.646)
3.	1998-99	55-31 (.640)
4.	2009-10	66-38 (.635)
5.	1993-94	62-37 (.626)
6.	1997-98	50-30 (.625)
7.	1996-97	49-32 (.598)
8.	2002-03	52-39 (.571)
9.	2001-02	51-39 (.567)
10.	2004-05	52-40 (.565)

Strength of Schedule

Two Valley teams have a SOS ranking in the Top 15 according to the NCAA (Jan. 13). Drake leads The Valley with a SOS of No. 10 with Missouri State's schedule coming in this week ranked No. 12.

Poll Position

Missouri State moved up to No. 19 in this week's AP Top 25 Poll, following this weekend's wins over Drake and UNI.

The Lady Bears sit 17th in the USA Today Coaches Top 25 Poll.

The Lady Bears' seven straight weeks in the AP poll is the longest such stretch by a MVC team since MSU was ranked 18-straight weeks in 2000-01 (reached Final Four).

Mid-Major Top-25 Poll

Drake, Missouri State and UNI all appear in the latest CollegeInsider.com Mid-Major Top 25 (Jan. 7). The Lady Bears sit second in the poll behind Gonzaga, while Drake sits eighth and UNI No. 18. Loyola, Bradley and Illinois State are receiving votes this week.

Against the Field

The MVC held a winning record against 15 leagues in non-conference play, including the American (2-1), America East (2-0), A10 (3-2), Big 12 (3-2), Big Sky (1-0), Horizon (6-2), Ivy (1-0), MAC (8-2), Mountain West (1-0), Ohio Valley (11-9), SEC (3-1) Southland (1-0), Summit (10-4), SWAC (2-0) and WAC (5-0). The MVC held a .500 mark against Conference USA (1-1) and the West Coast (2-2). The MVC had a losing record vs. the Atlantic Sun (0-1), Big East (1-3), Big Ten (3-7), Big West (0-1) and Pac-12 (0-2).

Sharing the Rock

Drake enters the weekend averaging 21.3 assists per game, which ranks third nationally. Drake is the only team in the country to rank in the top three of Assists Per Game each of the previous three seasons.

Assists Per Game

1.	Baylor	23.2
2.	Oregon	21.4
3.	Drake	21.3
4.	Iowa	20.9
5.	DePaul	20.1

High Percentage

Drake enters this weekend ranking 4th nationally in Field Goal Percentage (48.4%). Drake finished 10th in FG% last year, 5th in 2017-18, and 2nd in 2016-17. UConn is the only other school to finish in the top 10 in the last three seasons. The Huskies currently sit ninth nationally.

Field Goal Percentage

1.	Baylor	51.5%
2.	Oregon	50.1%
3.	Abilene Christian	49.3%
4.	Drake	48.4%
5.	South Dakota	48.4%

Drake's Sara Rhine enters the week ranking 4th nationally in field goal percentage (67.4%).

Climbing Valley Charts

Drake seniors Sara Rhine and Becca Hittner are climbing their way up the Missouri Valley Conference career scoring list. Rhine has scored 1,929 career points entering this weekend and currently sits 13th on the MVC list. Hittner currently ranks 18th with 1,827 points.

Career Points (MVC History)

1.	3,393 - Jackie Stiles, Missouri State	1998-01
2.	2,636 - Wanda Ford, Drake	1982-86
3.	2,551 - Lizzy Wendell, Drake	2014-17
4.	2,271 - Casey Garrison, Missouri State	2008-12
5.	2,139 - Kristi Cirone, Illinois State	2005-09
6.	2,099 - Sara Dickey, Evansville	2014-17
7.	2,073 - Kari Koch, Missouri State	2003-06
8.	2,054 - Jacqui Kalin, UNI	2012-13
9.	1,996 - Jan Jensen, Drake	1987-91
10.	1,944 - Amy Hile, Indiana State	1983-87
	1,944 - Melody Howard, Missouri State	1991-94
12.	1,930 - Carla Bennett, Drake	1999-03
13.	1,929 - Sara Rhine, Drake..... 2015-pres.	
14.	1,928 - Jill Martin, Drake	2003-08
15.	1,884 - Jenni Lingor, Missouri State	2002-05
16.	1,851 - Amy Swisher, UNI	2000-04
17.	1,843 - Kourtney Mennen, Indiana State	1999-03
18.	1,827 - Becca Hittner, Drake..... 2016-pres.	
19.	1,800 - Melanie Boeglin, Indiana State	2002-06
20.	1,779 - Cartaesha Macklin, Southern Illinois	2012-16

Drake senior Sara Rhine is also climbing her way up the Missouri Valley Conference career field goal list. Rhine has made 731 career field goals (ranks 4th nationally) entering this weekend and currently sits 7th on the MVC list.

Career Field Goals Made (MVC History)

1.	1,160 - Jackie Stiles, Missouri State	1998-01
2.	1,132 - Wanda Ford, Drake	1982-86
3.	933 - Lizzy Wendell, Drake	2014-17
4.	840 - Jan Jensen, Drake	1987-91
5.	792 - Casey Garrison, Missouri State	2008-12
6.	790 - Carla Bennett, Drake	1999-03
7.	731 - Sara Rhine, Drake..... 2015-pres.	

Drake seniors Sara Rhine and Becca Hittner are climbing their way up the Missouri Valley Conference career free throw list. Hittner has made 422 career free throws entering this weekend and currently sits 16th on the MVC list. Rhine currently ranks 18th with 414.

Career Free Throws Made (MVC History)

1.	852 - Jackie Stiles, Missouri State.....	1998-01
2.	582 - Carrie Welle, Creighton.....	1995-98
3.	576 - Melanie Boeglin, Indiana State.....	2002-06
4.	558 - Casey Garrison, Missouri State.....	2008-12
5.	525 - Tricia Wakely, Drake.....	1993-96
6.	520 - Amy Hile, Indiana State.....	1983-87
7.	512 - Kristi Cirone, Illinois State.....	2005-09
8.	495 - Tyonna Snow, Missouri State.....	2013-16
9.	477 - Jacqui Kalin, UNI.....	2007-10; 2012-13
10.	465 - Cartaesha Macklin, Southern Illinois.....	2012-16
11.	457 - Angela Buckner, Wichita State.....	2000-04
12.	455 - Lizzy Wendell, Drake.....	2014-17
13.	436 - Lisa Davies, Missouri State.....	1995-98
14.	425 - Jill Martin, Drake.....	2003-08
15.	423 - Julie Lein, Indiana State.....	1987-91
16.	422 - Becca Hittner, Drake..... 2016-pres.	
17.	420 - Lorri Bauman, Drake.....	1983-84
18.	414 - Sara Rhine, Drake..... 2015-pres.	

1,000 Point Club

The Valley has five active players in the 1,000 point club. Sara Rhine sits fourth on the NCAA career scoring chart, while Hittner sits ninth. The duo is the second highest teammate scoring tandem in the country behind Oregon's Sabrina Ionescu and Ruthy Hebard.

Current MVC Players in 1,000 Point Club

1,929 - Sara Rhine, Drake
1,827 - Becca Hittner, Drake
1,303 - Alexa Willard, Missouri State
1,239 - Nicole Martin, Southern Illinois
1,005 - Makenzie Silvey, Southern Illinois

Current MVC Players approaching 1,000

993 - Abby O'Connor, Loyola Chicago

Quick Starts Crucial

Since 1982-83, just three teams (Missouri State, champions in 1998-99, 1994-95 and 1990-91; Drake, champions in 1996-97 and co-champions in 1987-88; and Evansville, a 2007-08 co-champion) have won at least a share of the regular-season title without winning its regular-season opener. In fact, 14 of the last 19 regular-season champs (or co-champs) have opened 2-0 or better in MVC play, with Evansville in 2007-08, Missouri State in 2004-05, UNI in 2010-11, Missouri State in 2011-12 and UNI in 2015-16 serving as the only five exceptions.

Title Town

The league has had nine different regular-season champions in the past 13 seasons (SIU-2007, DU/UE/ILS-2008, ILS-2009, ILS-2010, UNI-2011; MSU-2012; WSU/CU-2013; INS/WSU-2014; WSU-2015; UNI-2016; DU-2017; DU-2018; DU-2019). Bradley, Loyola and Valparaiso are the only league teams not to have won a regular-season MVC championship.

Rhine on McClain Watch List

The Naismith Memorial Basketball Hall of Fame and the WBCA announced that Drake senior Sara Rhine is one of 20 watch list candidates for the 2020 Katrina McClain Award. Named after the two-time All-American and 1987 National Player of the Year, the annual award in its third year recognizes the top power forwards in women's NCAA Division I college basketball. By mid-February, the watch list of 20 players for the 2020 award will be narrowed to just 10.

Hittner on Drysdale Watch List

The Naismith Memorial Basketball Hall of Fame and the WBCA announced that Drake senior Becca Hittner is one of 20 watch list candidates for the 2020 Ann Meyers Drysdale Award. Named after the first player, male or female, selected to the All-America Team in four-straight college seasons, the annual Drysdale award is in its third year and recognizes the top shooting guard in NCAA Division I women's college basketball. By mid-February, the watch list of 20 players for the 2020 award will be narrowed to just 10.

Wade Award Watch List

Drake's Becca Hittner and Sara Rhine have each been selected to the "Wade Watch" list of candidates for the 2020 Wade Trophy presented to the best player in college women's basketball, the WBCA announced Thursday. Drake joins Oregon, Stanford, UConn and Oregon State as the only schools with multiple players on the list.

Wooden Award Watch List

Drake senior Becca Hittner has been named to the John R. Wooden Award® presented by Wendy's® Women's Preseason Top 30 Watch List. The preseason list represents nine conferences: the Pac-12 leads all conferences with nine selections, followed by the SEC with six, the ACC and Big 12 with four apiece, the American and Big Ten with two each, and Conference USA, Ivy League, and Missouri Valley with one selection apiece.

Bulldogs Favored

Drake was tabbed as the preseason favorite in the MVC Women's Basketball race in the annual survey of the league's coaches, SIDs and media.

2019-20 MVC WBB Preseason Poll

Rank	Team (1st-place votes)	Points
1.	Drake (31).....	359
2.	Missouri State (8).....	329
3.	UNI (1).....	297
4.	Bradley.....	255
5.	Southern Illinois.....	235
6.	Illinois State.....	212
7.	Loyola.....	188
8.	Valparaiso.....	126
9.	Indiana State.....	111
10.	Evansville.....	88

MVC WBB Preseason All-Conference

PLAYER, TEAM	POS.	CL.
*Becca Hittner, Drake	G	Sr.
Nicole Martin, Southern Illinois	F	Sr.
TeTe Maggett, Illinois State	G	Sr.
Sara Rhine, Drake	F	RSr.
Karli Rucker, UNI	G	Jr.

*Preseason Player of the Year

Hoops In the Heartland

The 2020 Missouri Valley Conference Women's Basketball Tournament will return to the TaxSlayer Center in Moline, Ill., for the fifth-straight season.

Affectionately coined "Hoops in the Heartland," the four-day event (Mar. 12-15) will showcase all 10 Missouri Valley Conference schools as they compete for the Valley's automatic berth into the NCAA Tournament.

The MVC's agreement with Visit Quad Cities will keep the MVC Women's Basketball Championship in TaxSlayer Center through at least 2021.

The 2020 tournament will mark the 13th-consecutive season in its 38-year history that the event will take place at a neutral site.

The Missouri Valley Conference is one of only seven conferences (out of 32 nationally) where the women's basketball tournament is played at a neutral site, separate from the men's championship (AAC, ACC, Big Ten, Big 12, MVC, Pac-12 and SEC are the others).

Starters Returning

The Missouri Valley Conference will see 30 of 50 starters return (60%) for the 2019-20 season. The league will return nine of its top 10 in scoring, seven of its top 10 in rebounding and four of its top five in assists. The Valley will also have eight of its 11 All-MVC players return and five of its six honorable mention selections.



Postseason League

The MVC has seen an average of four league teams participate in postseason play in the last 21 seasons, including three teams reaching postseason play in 2018-19. Missouri State reached the Sweet Sixteen for the fourth time in program history, while Drake fell to Missouri in the First Round of the NCAA Tournament. UNI received a bid to the WNIT for the second-straight season. The Valley has earned multiple NCAA Tournament bids in 12 different seasons, including two out of the last three seasons.

Coaches Teleconferences

Teleconferences with The Valley head coaches will be conducted twice throughout the season. The conferences begin at 11:45 a.m. (CST). To participate in the conference calls, call (877) 417-8778. Coaches call (877) 417-8756.

Media will be allowed to ask questions directly of the coaches. The session dates for 2019-20 are Tuesday, January 7 and Tuesday, March 10.

Time	Women's Head Coach, School
11:45 p.m.	Jennie Baranczyk, Drake
11:50 a.m.	Amaka Agugua-Hamilton, Missouri State
11:55 a.m.	Andrea Gorski, Bradley
12:00 p.m.	Kate Achter, Loyola
12:05 p.m.	Mary Evans, Valparaiso
12:10 p.m.	Matt Ruffing, Evansville
12:15 p.m.	Kristen Gillespie, Illinois State
12:20 p.m.	Vicki Hall, Indiana State
12:25 p.m.	Tanya Warren, UNI
12:30 p.m.	Cindy Stein, Southern Illinois

WOMEN'S BASKETBALL



FINAL FOUR
MISSOURI STATE - 1992, 2001



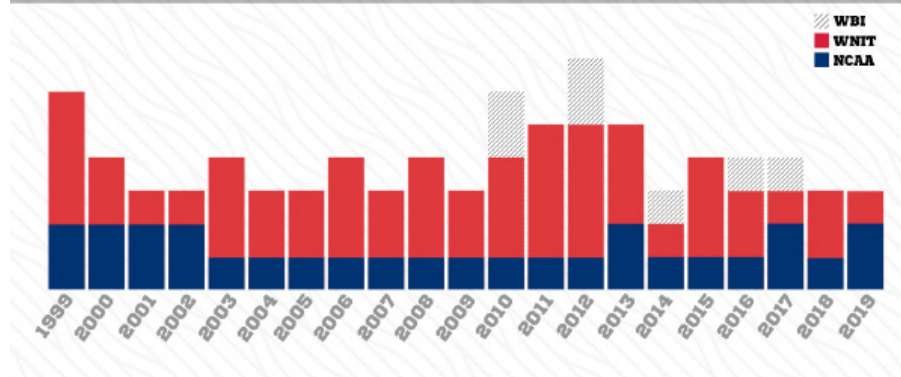
ELITE EIGHT
MISSOURI STATE - 1992, 2001
DRAKE - 1982



SWEET SIXTEEN
MISSOURI STATE - 1992, 1993, 2001, 2019
DRAKE - 1982, 2002
SOUTHERN ILLINOIS - 1987



**MVC TEAMS ON AVERAGE HAVE
COMPETED IN THE POSTSEASON
EACH YEAR SINCE 1999.**



#THEVALLEYRUNSDEEP

Missouri Valley Conference vs. Non-Conference Opponents (73-40, .646)

Overall: 73-40 (.646)
Home: 39-9 • **Away:** 28-25 • **Neut:** 6-6 • **Top-25:** 1-4

American Athletic	2-1 (H: 1-1; A: 1-0)
Memphis.....	0-1
at Southern Illinois.....	L, 70-66
Wichita State.....	2-0
at Missouri State.....	W, 68-55
UNI.....	W, 61-50

America East	2-0 (H: 1-0; N: 1-0)
Maine.....	2-0
vs. Drake.....	W, 94-62
Vermont.....	1-0
at Loyola.....	W, 78-76

Atlantic Sun	0-1 (N: 0-1)
Liberty.....	0-1
vs. Bradley.....	L, 75-63

Atlantic-10	3-2 (H: 1-0; A: 0-2; N: 2-0)
George Mason.....	1-0
vs. Bradley.....	W, 61-59
Richmond.....	1-0
vs. Bradley.....	W, 61-57
Saint Louis.....	1-2
Illinois State.....	L, 61-56
at Indiana State.....	L, 55-53
at Southern Illinois.....	W, 61-53

Big 12	3-2 (H: 1-0; A: 2-2)
Iowa State.....	2-0
at Drake.....	W, 86-81
UNI.....	W, 71-63
Kansas.....	0-1
Indiana State.....	L, 84-72
Oklahoma.....	1-1
Drake.....	L, 93-84
Missouri State.....	W, 96-90

Big East	1-3 (H: 1-1; A: 0-2)
Creighton.....	1-1
at Drake.....	W, 63-53
UNI.....	L, 57-54
DePaul.....	0-1
at Loyola.....	L, 83-76
Marquette.....	0-1
Illinois State.....	L, 58-41

Big Ten	3-7 (H: 1-0; A: 2-4; N: 0-3)
Illinois.....	1-1
Evansville.....	L, 59-44
Illinois State.....	W, 74-58
Iowa.....	1-1
Drake.....	L, 79-67
at UNI.....	W, 88-66
Michigan.....	0-1
Bradley.....	L, 77-57
Minnesota.....	1-0
Missouri State.....	W, 77-69
Northwestern.....	0-1
Valparaiso.....	L, 69-48
Ohio State.....	0-2
vs. UNI.....	L, 64-46
vs. Valparaiso.....	L, 89-38
Purdue.....	0-1
vs. Drake.....	L, 67-47

Big Sky	1-0 (N: 1-0)
Eastern Washington.....	1-0
vs. Bradley.....	W, 66-46

Big West	0-1 (N: 0-1)
Cal State Northridge.....	0-1
vs. Indiana State.....	L, 67-59

Conference USA	1-1 (H: 1-1)
Marshall.....	1-1
at Evansville.....	W, 66-62 (OT)
at Indiana State.....	L, 72-60

Horizon	6-2 (H: 2-1; A: 4-1)
Detroit Mercy.....	2-0
Loyola.....	W, 89-60
Valparaiso.....	W, 77-58
IUPUI.....	1-1
at UNI.....	W, 51-50
Southern Illinois.....	L, 81-78
UIC.....	2-0
Indiana State.....	W, 61-40
at Valparaiso.....	W, 63-37
Northern Kentucky.....	0-1
at Indiana State.....	L, 70-68
Oakland.....	1-0
Bradley.....	W, 74-58

Ivy League	1-0 (H: 1-0)
Dartmouth.....	1-0
at Loyola.....	W, 61-40

Mid-American	8-2 (H: 4-1; A: 4-1)
Bowling Green.....	2-0
at Loyola.....	W, 84-76
at Valparaiso.....	W, 95-90 (OT)
Eastern Michigan.....	1-0
Southern Illinois.....	W, 85-54
Northern Illinois.....	3-0
Drake.....	W, 73-49
at Illinois State.....	W, 69-66
Southern Illinois.....	W, 80-61
Miami (OH).....	1-1
at Bradley.....	W, 79-68
Evansville.....	L, 72-64
Toledo.....	1-0
Valparaiso.....	W, 61-54
Western Michigan.....	0-1
at Loyola.....	L, 70-60

Mountain West	1-0 (A: 1-0)
Boise State.....	1-0
Missouri State.....	W, 72-69

Ohio Valley	11-9 (H: 6-3; A: 5-6)
Austin Peay.....	0-2
Evansville.....	L, 80-64
Illinois State.....	L, 77-72 (OT)
Eastern Illinois.....	3-1
at Evansville.....	L, 90-44
Indiana State.....	W, 59-57
Loyola.....	W, 67-51
Valparaiso.....	W, 78-66
Morehead State.....	1-0
at Valparaiso.....	W, 55-53
Murray State.....	1-2
at Evansville.....	L, 61-59
Indiana State.....	L, 70-62
at Southern Illinois.....	W, 76-66
SEMO.....	0-3
Evansville.....	L, 83-60
at Indiana State.....	L, 68-58
Southern Illinois.....	L, 79-65
SIUE.....	3-1
Evansville.....	L, 85-74
at Illinois State.....	W, 74-53
Loyola.....	W, 63-50
Southern Illinois.....	W, 103-67
UT-Martin.....	2-0
at Illinois State.....	W, 70-47
at Southern Illinois.....	W, 70-59
Tennessee Tech.....	1-0
at Southern Illinois.....	W, 76-65

PAC-12	0-2 (A: 0-2)
Colorado.....	0-1
Indiana State.....	L, 59-46
Oregon State.....	0-1
Missouri State.....	L, 80-69

SEC	3-1 (H: 1-0; A: 1-0; N: 1-1)
Alabama.....	0-1
vs. UNI.....	L, 87-77
Auburn.....	1-0
vs. Drake.....	W, 83-82
Missouri.....	2-0
at Missouri State.....	W, 79-72
UNI.....	W, 78-73

Southland	1-0 (H: 1-0)
Texas A&M-CC.....	1-0
at Missouri State.....	W, 79-51

Summit	10-4 (H: 4-0; A: 5-4; N: 1-0)
North Dakota.....	1-1
Illinois State.....	W, 66-58
Valparaiso.....	L, 65-63
North Dakota State.....	3-0
at Bradley.....	W, 70-64
at UNI.....	W, 95-63
Valparaiso.....	W, 66-54
Omaha.....	1-0
UNI.....	W, 81-45

Purdue Fort Wayne.....	0-1
Evansville.....	L, 67-64
South Dakota.....	1-1
Drake.....	L, 102-94 (OT)
Missouri State.....	W, 74-66
South Dakota State.....	1-0
at Drake.....	W, 74-67
Western Illinois.....	4-1
Bradley.....	W, 84-49
at Drake.....	W, 94-75
at Illinois State.....	W, 78-65
Indiana State.....	L, 83-72
vs. Southern Illinois.....	W, 79-65

SWAC	2-0 (H: 2-0)
Jackson State.....	2-0
at Bradley.....	W, 78-69
at Illinois State.....	W, 77-55

West Coast	2-2 (H: 1-0; A: 1-2)
Gonzaga.....	0-1
Missouri State.....	L, 64-52
Pacific.....	0-1
Indiana State.....	L, 83-66
Portland.....	1-0
Loyola.....	W, 78-64 (OT)
Santa Clara.....	1-0
at Missouri State.....	W, 71-64

WAC	5-0 (H: 3-0; A: 2-0)
Chicago State.....	3-0
at Evansville.....	W, 76-42
Loyola.....	W, 98-53
at Valparaiso.....	W, 95-49
UMKC.....	2-0
Loyola.....	W, 72-67 (OT)
at Missouri State.....	W, 83-58

Non-Division I	6-0 (H: 6-0)
Brescia (Ky.).....	1-0
at Evansville.....	W, 77-61
Eureka.....	1-0
at Bradley.....	W, 101-39
Northwest Missouri State.....	1-0
at UNI.....	W, 78-53
Truman State.....	1-0
at Illinois State.....	W, 87-60
Waldorf.....	1-0
at Drake.....	W, 103-18
William Jewell.....	1-0
at Missouri State.....	W, 111-39

AP Top-25	1-4 (H: 0-1; A: 1-3)
#7 Oregon State.....	0-1
Missouri State.....	L, 80-69
#16 DePaul.....	0-1
at Loyola.....	L, 83-76
#17 Gonzaga.....	0-1
Missouri State.....	L, 64-52
#23 Minnesota.....	1-0
Missouri State.....	W, 77-69
#25 Michigan.....	0-1
Bradley.....	L, 77-57

2019 NCAA Teams	7-7 (H: 4-1; A: 3-6)
DePaul.....	0-1
at Loyola.....	L, 83-76
Gonzaga.....	0-1
Missouri State.....	L, 64-52
Iowa.....	1-1
Drake.....	L, 79-67
at UNI.....	W, 88-66
Iowa State.....	2-0
at Drake.....	W, 86-81
UNI.....	W, 71-63
Marquette.....	0-1
Illinois State.....	L, 58-41
Michigan.....	0-1
Bradley.....	L, 77-57
Missouri.....	2-0
at Missouri State.....	W, 79-72
UNI.....	W, 78-73
Oregon State.....	0-1
Missouri State.....	L, 80-69
South Dakota.....	1-1
Drake.....	L, 102-94 (OT)
Missouri State.....	W, 74-66
South Dakota State.....	1-0
at Drake.....	W, 74-67

114 NON-CONFERENCE OPPONENTS

49 ROAD

50 HOME

15 NEUTRAL

13 GAMES AGAINST TOURNAMENT TEAMS

8 GAMES AGAINST TEAMS FINISHING IN TOP 25

7 TOURNAMENTS

18 GAMES AGAINST POWER 5 OPPONENTS

10 BIG

4 XII

3 SEC

1

BRADLEY (12-2, 3-0)

Hitting the Road

Bradley has played a league-low three true road games heading into the first Missouri Valley Conference road swing of the 2019-20 season. Despite playing at least three fewer road games than any other Valley squad, the Braves have five wins away from home (three neutral site wins) this season, which is tied for fourth most in the league behind Loyola (8), Missouri State (6) and Valparaiso (6). Sporting a 2-1 record in true road contests, Bradley will be playing on an opponent's home floor for the first time since the Nov. 20 win at Western Illinois and only two teams in the country (Baylor & Miami [Fla.]) have played fewer true road games than the Braves through Jan. 12.



20/20 Vision

Sophomore Lasha Petree is averaging 28.0 points per game in MVC play and has scored 24 or more points in each of the first three league games. The first Bradley player to have three consecutive 20-point performances since Michelle Young did so in the first three games of the 2013-14 season, Petree has six 20-point outings through 14 contests in 2019-20 to match her season total from her freshman year. In fact, she is the Brave with 24 points or more in three straight games dating back to three consecutive 30-point games by Shelli Braud during the 1987-88 campaign. Braud is the only Bradley player to lead the MVC scoring, doing so during her senior year of 1987-88.

Block Party

In addition to scoring in bunches, sophomore Lasha Petree has been making her presence felt on the defensive end and is averaging an impressive 4.3 blocks per game in MVC action. Petree, who had a career-high six blocks in Friday's win over Illinois State in addition to scoring a game-high 24 points, tied for the most blocks in a game in the MVC this season and her total tied the fourth-highest single-game block total in Bradley history. She is the only player in the nation with 40 or more three-pointers and at least 25 blocked shots through games of Jan. 12. Bradley is second in the MVC in blocked shots per game (4.71), which would be the team's best season average since 2009-10 (5.03 per game).

Date	Opponent	Location	TV	Time
N8	at Oakland	W, 74-58		1-0
N10	at #25 Michigan	L, 77-57		1-1
N16	Eureka	W, 101-39		2-1
N20	at Western Illinois	W, 84-49		3-1
N23	Miami (OH)	W, 79-68		4-1

Coastal Carolina Tournament

N29	vs. George Mason	W, 61-59		5-1
-----	------------------	----------	--	-----

D1	vs. Richmond	W, 61-57		6-1
----	--------------	----------	--	-----

D5	North Dakota St.	W, 70-64		7-1
D10	Jackson State	W, 78-69		8-1

UMKC Tournament

D20	vs. Liberty	L, 75-63		8-2
D21	vs. Eastern Washington	W, 66-46		9-2

J3	*Evansville	W, 82-51		10-2, 1-0
J5	*Indiana State	W, 91-75		11-2, 2-0
J10	*Illinois State	W, 76-61		12-2, 3-0

J17	*at Loyola	Chicago, Ill.	(ESPN+)	3 PM
J19	*at Valparaiso	Valparaiso, Ind.	(ESPN+)	1 PM

J24	*UNI	Peoria, Ill.	(ESPN+)	7 PM
J26	*Drake	Peoria, Ill.	(ESPN3)	2 PM
J31	*at Missouri State	Springfield, Mo.	(ESPN+)	7 PM

F2	*at So. Illinois	Carbondale, Ill.	(ESPN+)	2 PM
F7	*at Illinois State	Normal, Ill.	(ESPN+)	7 PM
F14	*Valparaiso	Peoria, Ill.	(ESPN+)	7 PM
F16	*Loyola	Peoria, Ill.	(ESPN3)	2 PM
F20	*at Drake	Des Moines, Iowa	(ESPN+)	6 PM
F22	*at UNI	Cedar Falls, Iowa	(ESPN3)	2 PM
F27	*So. Illinois	Peoria, Ill.	(ESPN+)	7 PM

M1	*Missouri State	Peoria, Ill.	(ESPN+)	2 PM
M5	*at Indiana State	Terre Haute, Ind.	(ESPN+)	6 PM
M7	*at Evansville	Evansville, Ind.	(ESPN+)	1 PM

MVC Tournament

M12-15	Moline, Ill.	ESPN+
--------	--------------	-------

*MVC Games; Times are CST (unless noted) and subject to change

DRAKE (10-5, 2-1)

Road Steak Snapped

Drake had its impressive 29-game Missouri Valley Conference road winning streak stopped at No. 20/18 Missouri State. The Lady Bears' Sydney Manning made a three-pointer as time expired to escape with a 69-67 win. However, the Bulldogs did bounce back Sunday beating SIU, 73-65. Drake hasn't lost back-to-back MVC games since the 2015-16 season when it lost at Indiana State and UNI.



Charity Stripe Success

Senior Becca Hittner continued her impressive stretch of free throw shooting over the weekend making 20-of-21 for a blistering 95.2 percent. Her career average is now 84.4, which currently ranks No. 2 all-time at Drake and tied for 14th in MVC history. This season her 87.8 percent clip is No. 2 in the MVC.

Chart Climbers

The top scoring duo of Becca Hittner and Sara Rhine in the MVC one year ago are posting impressive scoring clips again this season. This season Rhine and Hittner currently rank No. 2 and 3, respectively, in the Valley at 18.3 and 17.5 points, respectively. Rhine, who leads the Valley at 18.3 points per game, has 1,929 career points. Her 10 points at SIU moved her past Jill Martin (1,928) to No. 7 all-time at Drake while Hittner with 1,827 points holds at No. 10. Rhine needs two points to move past Carla Bennett (1,930) for sixth all-time while Hittner is 20 away from taking over Jan Krieger (1,846) in ninth. The duo is vying to become the first-ever Drake and MVC teammates to reach the impressive 2,000 points club.

Date	Opponent	Location	TV	Time
N8	S. Dakota State	W, 74-67		1-0
N10	Iowa State	W, 86-81		2-0
N13	at South Dakota	L, 102-94 (OT)		2-1
N16	Creighton	W, 63-53		3-1
N24	Western Illinois	W, 94-75		4-1

Gulf Coast Showcase

N29	vs. Purdue	L, 67-47		4-2
N30	vs. Maine	W, 94-62		5-2

D1	vs. Auburn	W, 83-82		6-2
D5	Waldorf	W, 103-18		7-2
D17	at Oklahoma	L, 93-84		7-3
D21	at Iowa	L, 79-67		7-4
D29	at Northern Illinois	W, 73-49		8-4

J3	*UNI	W, 104-87		9-4, 1-0
J10	*at #18 Missouri State	L, 69-67		9-5, 1-1
J12	*at So. Illinois	W, 73-65		10-5, 2-1

J17	*Indiana State	Des Moines, Iowa	(ESPN+)	6 PM
J19	*Evansville	Des Moines, Iowa	(ESPN+)	2 PM

J24	*at Illinois State	Normal, Ill.	(ESPN3)	7 PM
J26	*at Bradley	Peoria, Ill.	(ESPN3)	2 PM
J31	*Valparaiso	Des Moines, Iowa	(ESPN+)	6 PM

F2	*Loyola	Des Moines, Iowa	(ESPN3)	2 PM
F7	*So. Illinois	Des Moines, Iowa	(ESPN+)	6 PM
F9	*Missouri State	Des Moines, Iowa	(ESPN+)	2 PM
F13	*at Evansville	Evansville, Ind.	(ESPN3)	6 PM
F15	*at Indiana State	Terre Haute, Ind.	(ESPN3)	1 PM
F20	*Bradley	Des Moines, Iowa	(ESPN+)	6 PM
F22	*Illinois State	Des Moines, Iowa	(ESPN3)	2 PM
F28	*at Loyola	Chicago, Ill.	(ESPN+)	7 PM

M1	*at Valparaiso	Valparaiso, Ind.	(ESPN+)	1 PM
M6	*at UNI	Cedar Falls, Iowa	(ESPN+)	6:30 PM

MVC Tournament

M12-15	Moline, Ill.	ESPN+
--------	--------------	-------

*MVC Games; Times are CST (unless noted) and subject to change

EVANSVILLE (3-12, 0-4)

Wallace Excelling

Since conference play began on Jan. 3, sophomore Makayla Wallace has stepped up her game. Sitting sixth on the team in scoring across all 15 games, Wallace has the third-best scoring average on the team in MVC action, averaging 9.5 points per game.



Feit Leads the Aces

Freshman Abby Feit has been no stranger to playing a high amount of minutes this season. Averaging 37 minutes per game, Feit has played a total of 555 minutes this season. No other Ace has played more than 400 minutes.

Causing Opponents Headaches

Evansville has shown a propensity to create turnovers this season. Aces' opponents rank in the top third in the nation in turnover rate, turning the ball over on 20.9% of its possessions.

Date	Opponent	Location	TV	Time
N5	Brescia (Ky.)	W, 77-61		1-0
N10	at SEMO	L, 83-60		1-1
N13	at SIUE	L, 85-74		1-2
N19	Eastern Illinois	L, 90-44		1-3
N21	at Austin Peay	L, 80-64		1-4
N24	Marshall	W, 66-62 (OT)		2-4
D3	Murray State	L, 61-59		2-5
D13	at Purdue Ft. Wayne	L, 67-64		2-6
D15	at Illinois	L, 59-44		2-7
D18	Chicago State	W, 76-42		3-7
D22	at Miami (OH)	L, 72-64		3-8
J3	*at Bradley	L, 82-51		3-9, 0-1
J5	*at Illinois State	L, 81-58		3-10, 0-2
J10	*Loyola	L, 71-61		3-11, 0-3
J12	*Valparaiso	L, 88-66		3-12, 0-4

J17	*at UNI	Cedar Falls, Iowa	(ESPN+)	6:30 PM
J19	*at Drake	Des Moines, Iowa	(ESPN+)	2 PM

J24	*So. Illinois	Evansville, Ind.	(ESPN3)	6 PM
J26	*Missouri State	Evansville, Ind.	(ESPN+)	1 PM
J31	*at Indiana State	Terre Haute, Ind.	(ESPN3)	6 PM

F6	*at Valparaiso	Valparaiso, Ind.	(ESPN+)	6 PM
F8	*at Loyola	Chicago, Ill.	(ESPN3)	2 PM
F13	*Drake	Evansville, Ind.	(ESPN3)	6 PM
F15	*UNI	Evansville, Ind.	(ESPN3)	1 PM
F21	*at Missouri State	Springfield, Mo.	(ESPN+)	7 PM
F23	*at So. Illinois	Carbondale, Ill.	(ESPN+)	2 PM
F28	*Indiana State	Evansville, Ind.	(ESPN+)	6 PM

M5	*Illinois State	Evansville, Ind.	(ESPN+)	6 PM
M7	*Bradley	Evansville, Ind.	(ESPN+)	1 PM

MVC Tournament

M12-15	Moline, Ill.	ESPN+
--------	--------------	-------

*MVC Games; Times are CST (unless noted) and subject to change

ILLINOIS STATE (10-4, 2-1)

Effortlessly Efficient

Fifth-year senior Lexi Wallen is averaging 16.7 points per game with a 57.3 field goal percentage. The former NCAA volleyball player who joined the team in December last season has made 89-of-150 attempts this season, ranking second in the Valley and 19th nationally in field goal percentage.



Adding Depth

With much of the attention on senior duo Lexi Wallen and TeTe Maggett (who combine to average 32.9 points per game), several other players have stepped up this year as scoring options for the 'Birds. Illinois State has had at least three Redbirds in double figures in nine of 14 games this season, with Valley newcomers Mary Crompton and JuJu Redmond averaging 8.6 and 8.5 points per game, respectively.

Road Trip Continues

Illinois State continues its three-game Valley road trip, heading north to take on Valparaiso on Friday and Loyola Chicago on Sunday. The 'Birds swept Valpo and split the series with Loyola during the 2018-19 season.

Date	Opponent	Location	TV	Time
N5	Truman State	W, 87-60		1-0
N10	at Marquette	L, 58-41		1-1
N16	at Illinois	W, 74-58		2-1
N20	Northern Illinois	W, 69-66		3-1
N24	at North Dakota	W, 66-58		4-1
N30	UT-Martin	W, 70-47		5-1
D4	Western Illinois	W, 78-65		6-1
D8	at Saint Louis	L, 61-56		6-2
D16	SIUE	W, 74-53		7-2
D19	Jackson State	W, 77-55		8-2
D29	at Austin Peay	L, 77-72 (OT)		8-3

J3	*Indiana State	W, 83-69		9-3, 1-0
J5	*Evansville	W, 81-58		10-3, 2-0
J10	*at Bradley	L, 76-61		10-4, 2-1

J17	*at Valparaiso	Valparaiso, Ind.	(ESPN+)	6 PM
J19	*at Loyola	Chicago, Ill.	(ESPN+)	1 PM

J24	*Drake	Normal, Ill.	(ESPN3)	7 PM
J26	*UNI	Normal, Ill.	(ESPN+)	2 PM
J31	*at So. Illinois	Carbondale, Ill.	(ESPN3)	6 PM

F2	*at Missouri State	Springfield, Mo.	(ESPN+)	2 PM
F7	*Bradley	Normal, Ill.	(ESPN+)	7 PM
F14	*Loyola	Normal, Ill.	(ESPN+)	7 PM
F16	*Valparaiso	Normal, Ill.	(ESPN+)	2 PM
F20	*at UNI	Cedar Falls, Iowa	(ESPN+)	6:30 PM
F22	*at Drake	Des Moines, Iowa	(ESPN3)	2 PM
F27	*Missouri State	Normal, Ill.	(ESPN+)	7:30 PM

M1	*So. Illinois	Normal, Ill.	(ESPN+)	2 PM
M5	*at Evansville	Evansville, Ind.	(ESPN+)	6 PM
M7	*at Indiana State	Terre Haute, Ind.	(ESPN+)	1 PM

MVC Tournament

M12-15	Moline, Ill.	ESPN+
--------	--------------	-------

*MVC Games; Times are CST (unless noted) and subject to change

INDIANA STATE (2-14, 0-4)

Tall Task Ahead

The Sycamores hit the road this weekend to take-on Drake and Northern Iowa, a road trip that hasn't been kind to the Trees in the past. Indiana State holds a combined 21-53 at DU/UNI, including 5-33 at Drake and 16-20 at Northern Iowa. The Sycamores haven't won on the road at Drake since a 73-71 victory on Mar. 6, 2014 and at UNI since an 85-72 win on Mar. 8, 2014.



An Increasing Roll

Sycamore junior CeCe Mayo was moved into the starting lineup for home games against Valparaiso and Loyola over the weekend, and she didn't disappoint. Mayo averaged 14 points and six rebounds between the two games, including a career-high 15 point and eight rebound performance against Loyola on Sunday. In addition to moving into the starting role, the junior also averaged her season-best in minutes at 25.5 per game over the weekend.

Terre Haute's Team

Despite the tough start to the season, the fanbase around Indiana State women's basketball continues to be one of the best in the Missouri Valley Conference. ISU averages an attendance of 1,265 during their six home games, trailing only Drake, Missouri State and Northern Iowa in the conference.

Date	Opponent	Location	TV	Time
N7	at Kansas	L, 84-72		0-1
N10	at Eastern Illinois	W, 59-57		1-1
N14	at Western Illinois	L, 83-72		1-2
N19	at UIC	W, 61-40		2-2
N26	at Colorado	L, 59-46		2-3
Pacific Tournament				
N29	at Pacific	L, 83-66		2-4
N30	vs. CSUN	L, 67-59		2-5
D3	Marshall	L, 72-60		2-6
D7	at Murray State	L, 70-62		2-7
D16	Northern Kentucky	L, 70-68		2-8
D21	SEMO	L, 68-58		2-9
D30	Saint Louis	L, 55-53		2-10
J3	*at Illinois State	L, 83-69		2-11, 0-1
J5	*at Bradley	L, 91-75		2-12, 0-2
J10	*Valparaiso	L, 75-56		2-13, 0-3
J12	*Loyola	L, 58-51		2-14, 0-4
J17	*at Drake	Des Moines, Iowa	(ESPN+)	6 PM
J19	*at UNI	Cedar Falls, Iowa	(ESPN+)	2 PM
J24	*Missouri State	Terre Haute, Ind.	(ESPN3)	6 PM
J26	*So. Illinois	Terre Haute, Ind.	(ESPN+)	1 PM
J31	*Evansville	Terre Haute, Ind.	(ESPN3)	6 PM
F6	*at Loyola	Chicago, Ill.	(ESPN3)	7 PM
F8	*at Valparaiso	Valparaiso, Ind.	(ESPN3)	1 PM
F13	*UNI	Terre Haute, Ind.	(ESPN+)	6 PM
F15	*Drake	Terre Haute, Ind.	(ESPN3)	1 PM
F21	*at So. Illinois	Carbondale, Ill.	(ESPN+)	6 PM
F23	*at Missouri State	Springfield, Mo.	(ESPN+)	2 PM
F28	*at Evansville	Evansville, Ind.	(ESPN+)	6 PM
M5	*Bradley	Terre Haute, Ind.	(ESPN+)	6 PM
M7	*Illinois State	Terre Haute, Ind.	(ESPN+)	1 PM

MVC Tournament

M12-15 Moline, Ill. ESPN+

*MVC Games; Times are CST (unless noted) and subject to change

LOYOLA (12-3, 3-1)

Expert Travelers

Loyola became the first team in all of Division I to reach 8-0 on the road after sweeping a pair of games in The Hoosier State this past weekend, defeating Evansville, 71-61, and Indiana State, 58-51. In this season alone, the Ramblers have already surpassed their total for road wins from the past three seasons combined.



This is 40

In both of its aforementioned victories over the weekend, Loyola held its two opponents under 40% shooting from the field. The Maroon & Gold are a perfect 10-0 (1.000) this season and 30-18 overall (.625) during head coach Kate Achter's tenure when limiting opponents to less than 40% efficiency.

History at Home?

As Loyola returns home this coming weekend to welcome Bradley and Illinois State to Rogers Park, Loyola junior guard/forward Abby O'Connor finds herself just seven points shy of becoming the 25th member of Loyola's 1,000-point club. The South Bend, Ind. native is in the midst of another standout campaign, averaging 15.0 points and 8.3 rebounds. O'Connor has upped her game since the start of Missouri Valley Conference play, adding 15.8 points and 9.8 rebounds across the Ramblers' first four league contests.

Date	Opponent	Location	TV	Time
N5	at Detroit Mercy	W, 89-60		1-0
N8	Vermont	W, 78-76		2-0
N13	at Eastern Illinois	W, 67-51		3-0
N19	at Chicago State	W, 98-53		4-0
N22	at Kansas City	W, 72-67 (2OT)		5-0
D1	at Portland	W, 78-64 (OT)		6-0
D4	Dartmouth	W, 61-40		7-0
D8	at SIUE	W, 63-50		8-0
D16	Bowling Green	W, 84-76		9-0
D20	#16 DePaul	L, 83-76		9-1
D30	Western Michigan	L, 70-60		9-2
J3	*#17 Missouri State	L, 74-72 (OT)		9-3, 0-1
J5	*So. Illinois	W, 51-49		10-3, 1-1
J10	*at Evansville	W, 71-61		11-3, 2-1
J12	*at Indiana State	W, 58-51		12-3, 3-1
J17	*Bradley	Chicago, Ill.	(ESPN+)	3 PM
J19	*Illinois State	Chicago, Ill.	(ESPN+)	1 PM
J24	*at Valparaiso	Valparaiso, Ind.	(ESPN3)	6 PM
J31	*at UNI	Cedar Falls, Iowa	(ESPN3)	6:30 PM
F2	*at Drake	Des Moines, Iowa	(ESPN3)	2 PM
F6	*Indiana State	Chicago, Ill.	(ESPN3)	7 PM
F8	*Evansville	Chicago, Ill.	(ESPN3)	2 PM
F14	*at Illinois State	Normal, Ill.	(ESPN+)	7 PM
F16	*at Bradley	Peoria, Ill.	(ESPN3)	2 PM
F22	*Valparaiso	Chicago, Ill.	(ESPN3)	2 PM
F28	*Drake	Chicago, Ill.	(ESPN+)	7 PM
M1	*UNI	Chicago, Ill.	(ESPN+)	1 PM
M5	*at So. Illinois	Carbondale, Ill.	(ESPN3)	6 PM
M7	*at Missouri State	Springfield, Mo.	(ESPN+)	2 PM

MVC Tournament

M12-15 Moline, Ill. ESPN+

*MVC Games; Times are CST (unless noted) and subject to change

#17/19 MISSOURI STATE (14-2, 4-0)

Lady Bears No. 1

Missouri State ascended to the top spot in the NCAA RPI the morning of Jan. 11, becoming the first MVC team on record to be ranked No. 1 in the metric. The Lady Bears own road wins over Oklahoma (39th), South Dakota (40th), Minnesota (57th) and Boise State (94th), as well as home victories against Drake (23rd) and UNI (34th) as of the Jan. 13 ratings. MSU's two losses on the season were on the road at Oregon State (5th) and Gonzaga (7th).



Balanced Bears

Missouri State continued to display its offensive versatility last week, with Sydney Manning (16) and Abby Hipp (15) coming off the bench to establish career scoring highs in the two wins. At least eight players have scored in 12 of 16 games this year, 11 different players have a double-figure scoring game, nine have scored 15 or more at least once, and six have a 19-point game on their resume.

Iowa Sweep Again

Last season, Missouri State became the first team to earn road wins at Drake and UNI in the same weekend since 2014, and the Lady Bears made history again by beating those two clubs at home last week. MSU is the first team to beat both Drake and UNI at home in the same weekend since both the Lady Bears and Wichita State did it on Feb. 27 and March 1, 2015.

Date	Opponent	Location	TV	Time
N5	at #23 Minnesota	W, 77-69		1-0
Preseason WNIT				
N8	Texas A&M-CC	W, 79-51		2-0
N10	at Boise State	W, 72-69		3-0
N14	at Oklahoma	W, 96-90		4-0
N17	at #7 Oregon State	L, 80-69		4-1
N22	Santa Clara	W, 71-64		5-1
N25	at South Dakota	W, 74-66		6-1
D1	Kansas City	W, 83-58		7-1
D4	Wichita State	W, 68-55		8-1
D15	Missouri	W, 79-72		9-1
D20	at #17 Gonzaga	L, 64-52		9-2
D31	William Jewel	W, 111-39		10-2
J3	*at Loyola	W, 74-72 (OT)		11-2, 1-0
J5	*at Valparaiso	W, 81-68		12-2, 2-0
J10	*Drake	W, 69-67		13-2, 3-0
J12	*UNI	W, 80-66		14-2, 4-0
J17	*at So. Illinois	Carbondale, Ill.	(ESPN+)	6 PM
J24	*at Indiana State	Terre Haute, Ind.	(ESPN3)	6 PM
J26	*at Evansville	Evansville, Ind.	(ESPN+)	1 PM
J31	*Bradley	Springfield, Mo.	(ESPN+)	7 PM
F2	*Illinois State	Springfield, Mo.	(ESPN+)	2 PM
F7	*at UNI	Cedar Falls, Iowa	(ESPN3)	6:30 PM
F9	*at Drake	Des Moines, Iowa	(ESPN+)	2 PM
F15	*So. Illinois	Springfield, Mo.	(ESPN3)	3 PM
F21	*Evansville	Springfield, Mo.	(ESPN+)	7 PM
F23	*Indiana State	Springfield, Mo.	(ESPN+)	2 PM
F27	*at Illinois State	Normal, Ill.	(ESPN+)	7:30 PM
M1	*at Bradley	Peoria, Ill.	(ESPN+)	2 PM
M5	*Valparaiso	Springfield, Mo.	(ESPN+)	7 PM
M7	*Loyola	Springfield, Mo.	(ESPN+)	2 PM

MVC Tournament

M12-15 Moline, Ill. ESPN+

*MVC Games; Times are CST (unless noted) and subject to change

UNI (9-5, 1-2)

Efficient at the Line

UNI is currently ranked sixth in the NCAA for team free throw percentage at 78.5%. Six Panther are shooting better than 80% from the line, led by Abby Gerrits who is currently shooting 12-13 (92.3%) and Megan Maahs who is shooting 28-32 (87.5%).



Live By the Three

The Panthers are ranked 19th in the NCAA for three-pointers made in a game. UNI makes 8.6 threes per game and is shooting at 34.7% from the three-point line. Nicole Kroeger leads the way shooting 26-61 (42.6%) from the three-point line.

Back Home

The Panthers return home for the first time in over a month. UNI is undefeated at home so far this season, but has played just one home game since late November. The Panthers are the only Valley team to open with three consecutive road games.

Date	Opponent	Location	TV	Time
N6	N. Dakota State	W, 95-63		1-0
N9	at Wichita State	W, 61-50		2-0
N13	at Missouri	W, 78-73		3-0
N17	Iowa	W, 88-66		4-0
N24	NW Missouri St.	W, 78-53		5-0
South Point Shootout				
N29	vs. Alabama	L, 87-77		5-1
N30	vs. Ohio State	L, 64-46		5-2
D8	at Creighton	L, 57-54		5-3
D10	at Omaha	W, 81-45		6-3
D15	IUPUI	W, 51-50		7-3
D22	at Iowa State	W, 71-63		8-3
J3	*at Drake	L, 104-87		8-4, 0-1
J10	*at So. Illinois	W, 60-57		9-4, 1-1
J12	*at #18 Missouri State	L, 80-66		9-5, 1-2
J17	*Evansville	Cedar Falls, Iowa	(ESPN+)	6:30 PM
J19	*Indiana State	Cedar Falls, Iowa	(ESPN+)	2 PM
J24	*at Bradley	Peoria, Ill.	(ESPN+)	7 PM
J26	*at Illinois State	Normal, Ill.	(ESPN+)	2 PM
J31	*Loyola	Cedar Falls, Iowa	(ESPN3)	6:30 PM
F2	*Valparaiso	Cedar Falls, Iowa	(ESPN+)	2 PM
F7	*Missouri State	Cedar Falls, Iowa	(ESPN3)	6:30 PM
F9	*So. Illinois	Cedar Falls, Iowa	(ESPN+)	2 PM
F13	*at Indiana State	Terre Haute, Ind.	(ESPN+)	6 PM
F15	*at Evansville	Evansville, Ind.	(ESPN3)	1 PM
F20	*Illinois State	Cedar Falls, Iowa	(ESPN+)	6:30 PM
F22	*Bradley	Cedar Falls, Iowa	(ESPN3)	2 PM
F28	*at Valparaiso	Valparaiso, Ind.	(ESPN+)	6 PM
M1	*at Loyola	Chicago, Ill.	(ESPN+)	1 PM
M6	*Drake	Cedar Falls, Iowa	(ESPN+)	6:30 PM

MVC Tournament

M12-15 Moline, Ill. ESPN+

*MVC Games; Times are CST (unless noted) and subject to change

SOUTHERN ILLINOIS (9-6, 1-3)

1,000 Point Club

Makenzie Silvey scored her 1,000th career point against Drake on Sunday. The junior guard is the 27th player in program history to reach the milestone, and the 10th to do so as a junior. It took the Glen Carbon, Ill. native 76 career games to accomplish the feat- the sixth-fastest to reach 1,000 career points in terms of games played in school history.



Stepping Into Passing Lanes

Southern's defensive effort was outstanding against Drake on Sunday. SIU forced 27 turnovers, which were the most for the Bulldogs in a game since March 13, 2015. The Salukis also finished with a season-best 16 steals- which are their most in a game since the 2009-10 season (1/2/10; vs. Evansville).

Climbing Up the Charts

Nicole Martin scored 19 points against the Drake Bulldogs to move up to 12th on SIU's all-time scoring list. Martin's 1,239 points are 33 points shy of cracking the top-10 in program history.

Date	Opponent	Location	TV	Time
N8	at SIUE	W, 103-67		1-0
N12	at IUPUI	L, 81-78		1-1
N16	Tennessee Tech	W, 76-65		2-1
N20	Memphis	L, 70-66		2-2
N23	at E. Michigan	W, 85-54		3-2
N27	Saint Louis	W, 61-53		4-2

D3	UT-Martin	W, 70-59		5-2
D7	at SEMO	L, 79-65		5-3
D15	Murray State	W, 76-66		6-3

Compass Challenge

D19	vs. Western Illinois	W, 79-65		7-3
D20	at Northern Illinois	W, 80-61		8-3

J3	*at Valparaiso	W, 67-51		9-3, 1-0
J5	*at Loyola	L, 51-49		9-4, 1-1
J10	*UNI	L, 60-57		9-5, 1-2
J12	*Drake	L, 73-65		9-6, 1-3

J17	*#17 Missouri St.	Carbondale, Ill.	(ESPN+)	6 PM
-----	-------------------	------------------	---------	------

J24	*at Evansville	Evansville, Ind.	(ESPN3)	6 PM
J26	*at Indiana State	Terre Haute, Ind.	(ESPN+)	1 PM
J31	*Illinois State	Carbondale, Ill.	(ESPN3)	6 PM

F2	*Bradley	Carbondale, Ill.	(ESPN+)	2 PM
F7	*at Drake	Des Moines, Iowa	(ESPN+)	6 PM
F9	*at UNI	Cedar Falls, Iowa	(ESPN+)	2 PM
F15	*at Missouri State	Springfield, Mo.	(ESPN3)	3 PM
F21	*Indiana State	Carbondale, Ill.	(ESPN+)	6 PM
F23	*Evansville	Carbondale, Ill.	(ESPN+)	2 PM
F27	*at Bradley	Peoria, Ill.	(ESPN+)	7 PM

M1	*at Illinois State	Normal, Ill.	(ESPN+)	2 PM
M5	*Loyola	Carbondale, Ill.	(ESPN+)	6 PM
M7	*Valparaiso	Carbondale, Ill.	(ESPN+)	2 PM

MVC Tournament

M12-15	Moline, Ill.	ESPN+
--------	--------------	-------

*MVC Games; Times are CST (unless noted) and subject to change

VALPARAISO (10-5, 2-2)

A Perfect Weekend

The wins over Indiana State and Evansville gave Valpo its first two-game sweep of an MVC weekend since the Crusaders joined the conference. In fact, it is Valpo's first two-game sweep of a league weekend of any sort since beating Cleveland State and Youngstown State in January 2016, and it marks Valpo's first two-game sweep of a league road weekend since winning at CSU and at YSU Feb. 28 and March 1, 2008.



Securing Many Steals

Valpo continued its high output in the steals column in last weekend's wins. The Crusaders racked up 10 steals in their win at Indiana State Friday, but that was just an appetizer for Sunday's main course at Evansville. The win over the Purple Aces featured 21 steals, a season best and tied for 10th-most in a single game in program history. The 21 thefts tied the most in a single game by a Valpo team since 1995. The 2002-03 team racked up 21 steals in a win over Southern Utah on Jan. 20, 2003. It is also the most steals this season by an MVC school against a Division I opponent.

From Way Downtown

On the offensive end, it's been Valpo's consistency with the 3-point shot that has been the highlight to start MVC play. In the Indiana State win, Valpo hit at a 43.8% (7-of-16) clip from the arc, and then against Evansville, the Crusaders were 14-for-29 (48.3%) from 3-point range - the second time in the last three games they have hit 14 3-pointers to tie for the sixth-most triples in a game in program history. Valpo has now connected at 40% or better from the 3-point line in five of its last six games, and is shooting 48.8% from deep within MVC play so far.

Date	Opponent	Location	TV	Time
N10	vs. Ohio State	L, 89-38		0-1
N15	at N. Dakota St.	W, 66-54		1-1
N17	at North Dakota	L, 65-63		1-2
N21	at Northwestern	L, 69-48		1-3
N24	Bowling Green	W, 95-90 (OT)		2-3
N27	at Toledo	W, 61-54		3-3

D5	at Detroit	W, 77-58		4-3
D15	UIC	W, 63-37		5-3
D17	Morehead State	W, 55-53		6-3
D28	Chicago State	W, 95-49		7-3
D30	at Eastern Illinois	W, 78-66		8-3

J3	*So. Illinois	L, 67-51		8-4, 0-1
J5	*Missouri State	L, 81-68		8-5, 0-2
J10	*at Indiana State	W, 75-56		9-5, 1-2
J12	*at Evansville	W, 88-66		10-5, 2-2

J17	*Illinois State	Valparaiso, Ind.	(ESPN+)	6 PM
J19	*Bradley	Valparaiso, Ind.	(ESPN+)	1 PM

J24	*Loyola	Valparaiso, Ind.	(ESPN3)	6 PM
J31	*at Drake	Des Moines, Iowa	(ESPN+)	6 PM

F2	*at UNI	Cedar Falls, Iowa	(ESPN+)	2 PM
F6	*Evansville	Valparaiso, Ind.	(ESPN+)	6 PM
F8	*Indiana State	Valparaiso, Ind.	(ESPN3)	1 PM
F14	*at Bradley	Peoria, Ill.	(ESPN+)	7 PM
F16	*at Illinois State	Normal, Ill.	(ESPN+)	2 PM
F22	*at Loyola	Chicago, Ill.	(ESPN3)	2 PM
F28	*UNI	Valparaiso, Ind.	(ESPN+)	6 PM

M1	*Drake	Valparaiso, Ind.	(ESPN+)	1 PM
M5	*at Missouri State	Springfield, Mo.	(ESPN+)	7 PM
M7	*at So. Illinois	Carbondale, Ill.	(ESPN+)	2 PM

MVC Tournament

M12-15	Moline, Ill.	ESPN+
--------	--------------	-------

*MVC Games; Times are CST (unless noted) and subject to change



2019-20 Missouri Valley Conference
CONFERENCE BASKETBALL STATISTICS
Through games of Jan 13, 2020 (All games)



SCORING OFFENSE	G	W-L	Pts	Avg/G
1. Drake	15	10-5	1206	80.4
2. Missouri State	16	14-2	1235	77.2
3. Bradley	14	12-2	1043	74.5
4. Loyola Chicago	15	12-3	1078	71.9
5. Southern Illinois	15	9-6	1077	71.8
6. Northern Iowa	14	9-5	993	70.9
7. Illinois State	14	10-4	989	70.6
8. Valparaiso	15	10-5	1021	68.1
9. Evansville	15	3-12	928	61.9
10. Indiana State	16	2-14	987	61.7

SCORING DEFENSE	G	Pts	Avg/G
1. Bradley	14	848	60.6
2. Illinois State	14	861	61.5
3. Loyola Chicago	15	925	61.7
4. Valparaiso	15	954	63.6
5. Southern Illinois	15	955	63.7
6. Northern Iowa	14	912	65.1
7. Missouri State	16	1050	65.6
8. Indiana State	16	1115	69.7
9. Drake	15	1049	69.9
10. Evansville	15	1084	72.3

SCORING MARGIN	G	Offense	Defense	Margin
1. Bradley	14	74.5	60.6	+13.9
2. Missouri State	16	77.2	65.6	+11.6
3. Drake	15	80.4	69.9	+10.5
4. Loyola Chicago	15	71.9	61.7	+10.2
5. Illinois State	14	70.6	61.5	+9.1
6. Southern Illinois	15	71.8	63.7	+8.1
7. Northern Iowa	14	70.9	65.1	+5.8
8. Valparaiso	15	68.1	63.6	+4.5
9. Indiana State	16	61.7	69.7	-8.0
10. Evansville	15	61.9	72.3	-10.4

FREE THROW PCT	G	FTM	FTA	Pct.
1. Northern Iowa	14	208	265	.785
2. Drake	15	189	245	.771
3. Valparaiso	15	207	271	.764
4. Missouri State	16	261	343	.761
5. Bradley	14	189	261	.724
6. Illinois State	14	183	260	.704
7. Loyola Chicago	15	178	258	.690
8. Southern Illinois	15	179	271	.661
9. Evansville	15	175	268	.653
10. Indiana State	16	201	326	.617

FIELD GOAL PERCENTAGE	G	FGM	FGA	Pct.
1. Drake	15	450	929	.484
2. Missouri State	16	440	986	.446
3. Southern Illinois	15	400	909	.440
4. Illinois State	14	360	822	.438
5. Bradley	14	368	845	.436
6. Loyola Chicago	15	402	937	.429
7. Valparaiso	15	342	803	.426
8. Northern Iowa	14	332	817	.406
9. Indiana State	16	355	921	.385
10. Evansville	15	325	869	.374

FIELD GOAL PCT DEFENSE	G	FGM	FGA	Pct.
1. Bradley	14	317	896	.354
2. Valparaiso	15	324	858	.378
3. Illinois State	14	316	817	.387
4. Loyola Chicago	15	347	894	.388
5. Northern Iowa	14	329	831	.396
6. Drake	15	378	954	.396
7. Missouri State	16	383	948	.404
8. Southern Illinois	15	343	844	.406
9. Evansville	15	386	934	.413
10. Indiana State	16	386	923	.418

3-POINT FG PCT	G	3FGM	3FGA	Pct.
1. Missouri State	16	94	239	.393
2. Bradley	14	118	328	.360
3. Illinois State	14	86	245	.351
4. Loyola Chicago	15	96	275	.349
5. Northern Iowa	14	121	349	.347
6. Southern Illinois	15	98	285	.344
7. Valparaiso	15	130	382	.340
8. Drake	15	117	355	.330
9. Indiana State	16	76	268	.284
10. Evansville	15	103	368	.280

3-POINT FG PCT DEFENSE	G	3FGM	3FGA	Pct.
1. Valparaiso	15	74	296	.250
2. Bradley	14	79	280	.282
3. Southern Illinois	15	65	211	.308
4. Northern Iowa	14	80	253	.316
5. Indiana State	16	94	295	.319
6. Illinois State	14	86	267	.322
7. Loyola Chicago	15	97	301	.322
8. Drake	15	131	387	.339
9. Evansville	15	122	355	.344
10. Missouri State	16	117	304	.385

REBOUNDING OFFENSE	G	Rebounds	Avg/G
1. Bradley	14	604	43.1
2. Loyola Chicago	15	644	42.9
3. Missouri State	16	649	40.6
4. Illinois State	14	560	40.0
5. Drake	15	583	38.9
6. Indiana State	16	607	37.9
7. Southern Illinois	15	566	37.7
8. Northern Iowa	14	515	36.8
9. Evansville	15	530	35.3
10. Valparaiso	15	458	30.5

REBOUNDING DEFENSE	G	Rebounds	Avg/G
1. Missouri State	16	498	31.1
2. Drake	15	473	31.5
3. Loyola Chicago	15	493	32.9
4. Illinois State	14	469	33.5
5. Southern Illinois	15	527	35.1
6. Bradley	14	509	36.4
7. Northern Iowa	14	511	36.5
8. Indiana State	16	610	38.1
9. Valparaiso	15	589	39.3
10. Evansville	15	643	42.9



2019-20 Missouri Valley Conference
CONFERENCE BASKETBALL STATISTICS
Through games of Jan 13, 2020 (All games)



REBOUNDING MARGIN	G	Team	Avg.	Opp.	Avg.	Margin
1. Loyola Chicago	15	644	42.9	493	32.9	+10.1
2. Missouri State	16	649	40.6	498	31.1	+9.4
3. Drake	15	583	38.9	473	31.5	+7.3
4. Bradley	14	604	43.1	509	36.4	+6.8
5. Illinois State	14	560	40.0	469	33.5	+6.5
6. Southern Illinois	15	566	37.7	527	35.1	+2.6
7. Northern Iowa	14	515	36.8	511	36.5	+0.3
8. Indiana State	16	607	37.9	610	38.1	-0.2
9. Evansville	15	530	35.3	643	42.9	-7.5
10. Valparaiso	15	458	30.5	589	39.3	-8.7

ASSISTS	G	No.	Avg/G
1. Drake	15	319	21.3
2. Loyola Chicago	15	241	16.1
3. Missouri State	16	249	15.6
4. Southern Illinois	15	231	15.4
5. Bradley	14	213	15.2
6. Illinois State	14	196	14.0
7. Valparaiso	15	203	13.5
8. Evansville	15	186	12.4
9. Northern Iowa	14	172	12.3
10. Indiana State	16	166	10.4

TURNOVER MARGIN	G	Team	Avg.	Opp.	Avg.	Margin
1. Valparaiso	15	259	17.3	291	19.4	+2.1
2. Missouri State	16	255	15.9	277	17.3	+1.4
3. Northern Iowa	14	212	15.1	227	16.2	+1.1
4. Southern Illinois	15	233	15.5	248	16.5	+1.0
5. Loyola Chicago	15	223	14.9	232	15.5	+0.6
6. Illinois State	14	230	16.4	238	17.0	+0.6
7. Evansville	15	304	20.3	290	19.3	-0.9
8. Drake	15	270	18.0	254	16.9	-1.1
9. Bradley	14	222	15.9	205	14.6	-1.2
10. Indiana State	16	280	17.5	236	14.8	-2.8

OFFENSIVE REBOUNDS	G	No.	Avg/G
1. Loyola Chicago	15	198	13.2
2. Indiana State	16	205	12.8
3. Missouri State	16	202	12.6
4. Southern Illinois	15	189	12.6
5. Illinois State	14	172	12.3
6. Bradley	14	165	11.8
7. Drake	15	174	11.6
8. Northern Iowa	14	150	10.7
9. Evansville	15	155	10.3
10. Valparaiso	15	109	7.3

DEFENSIVE REB PCT.	G	D-Reb	Opp. OR	D-Reb%
1. Loyola Chicago	15	446	132	.772
2. Missouri State	16	447	137	.765
3. Illinois State	14	388	143	.731
4. Bradley	14	439	163	.729
5. Drake	15	409	172	.704
6. Southern Illinois	15	377	160	.702
7. Northern Iowa	14	365	156	.701
8. Indiana State	16	402	195	.673
9. Evansville	15	375	216	.635
10. Valparaiso	15	349	219	.614

BLOCKED SHOTS	G	No.	Avg/G
1. Missouri State	16	79	4.9
2. Bradley	14	66	4.7
3. Valparaiso	15	59	3.9
4. Drake	15	58	3.9
5. Northern Iowa	14	53	3.8
6. Indiana State	16	57	3.6
7. Southern Illinois	15	53	3.5
8. Evansville	15	52	3.5
9. Loyola Chicago	15	38	2.5
10. Illinois State	14	25	1.8

STEALS	G	No.	Avg/G
1. Valparaiso	15	163	10.9
2. Drake	15	146	9.7
3. Evansville	15	138	9.2
4. Missouri State	16	140	8.8
5. Indiana State	16	139	8.7
6. Southern Illinois	15	120	8.0
7. Illinois State	14	110	7.9
8. Northern Iowa	14	101	7.2
Bradley	14	101	7.2
10. Loyola Chicago	15	96	6.4

ASSIST/TURNOVER RATIO	G	Ast.	Avg.	T/O	Avg.	Ratio
1. Drake	15	319	21.3	270	18.0	1.2
2. Loyola Chicago	15	241	16.1	223	14.9	1.1
3. Southern Illinois	15	231	15.4	233	15.5	1.0
4. Missouri State	16	249	15.6	255	15.9	1.0
5. Bradley	14	213	15.2	222	15.9	1.0
6. Illinois State	14	196	14.0	230	16.4	0.9
7. Northern Iowa	14	172	12.3	212	15.1	0.8
8. Valparaiso	15	203	13.5	259	17.3	0.8
9. Evansville	15	186	12.4	304	20.3	0.6
10. Indiana State	16	166	10.4	280	17.5	0.6

DEFENSIVE REBOUNDS	G	No.	Avg/G
1. Bradley	14	439	31.4
2. Loyola Chicago	15	446	29.7
3. Missouri State	16	447	27.9
4. Illinois State	14	388	27.7
5. Drake	15	409	27.3
6. Northern Iowa	14	365	26.1
7. Southern Illinois	15	377	25.1
8. Indiana State	16	402	25.1
9. Evansville	15	375	25.0
10. Valparaiso	15	349	23.3

OFFENSIVE REB PCT.	G	O-Reb	Opp. DR	O-Reb%
1. Drake	15	174	301	.366
2. Missouri State	16	202	361	.359
3. Loyola Chicago	15	198	361	.354
4. Illinois State	14	172	326	.345
5. Southern Illinois	15	189	367	.340
6. Indiana State	16	205	415	.331
7. Bradley	14	165	346	.323
8. Northern Iowa	14	150	355	.297
9. Evansville	15	155	427	.266
10. Valparaiso	15	109	370	.228



2019-20 Missouri Valley Conference
CONFERENCE BASKETBALL STATISTICS
Through games of Jan 13, 2020 (All games)



3-POINT FG MADE	G	No.	Avg/G
1. Valparaiso	15	130	8.7
2. Northern Iowa	14	121	8.6
3. Bradley	14	118	8.4
4. Drake	15	117	7.8
5. Evansville	15	103	6.9
6. Southern Illinois	15	98	6.5
7. Loyola Chicago	15	96	6.4
8. Illinois State	14	86	6.1
9. Missouri State	16	94	5.9
10. Indiana State	16	76	4.8



2019-20 Missouri Valley Conference
CONFERENCE BASKETBALL STATISTICS
Through games of Jan 13, 2020 (All games)



Team	Conference	Pct.	PF	PA	Overall	Pct.	PF	PA	Current unbeaten streak
Missouri State	4-0	1.000	76.0	68.2	14-2	.875	77.2	65.6	Missouri State -- 5
Bradley	3-0	1.000	83.0	62.3	12-2	.857	74.5	60.6	Bradley -- 4
Loyola Chicago	3-1	.750	63.0	58.8	12-3	.800	71.9	61.7	Loyola Chicago -- 3
Illinois State	2-1	.667	75.0	67.7	10-4	.714	70.6	61.5	Valparaiso -- 2
Drake	2-1	.667	81.3	73.7	10-5	.667	80.4	69.9	Drake -- 1
Valparaiso	2-2	.500	70.5	67.5	10-5	.667	68.1	63.6	
Northern Iowa	1-2	.333	71.0	80.3	9-5	.643	70.9	65.1	
Southern Illinois	1-3	.250	59.5	58.8	9-6	.600	71.8	63.7	
Evansville	0-4	.000	59.0	80.5	3-12	.200	61.9	72.3	
Indiana State	0-4	.000	62.8	76.8	2-14	.125	61.7	69.7	

TEAM SUMMARIES	G	PF-PA	Avg score	Margin	FG-FGA	Pct.	3FG-FGA	Pct.	FT-FTA	Pct.	RebF	RebA	Margin
Bradley	14	1043-848	74.5-60.6	+13.9	368-845	.436	118-328	.360	189-261	.724	604	509	+6.8
Drake	15	1206-1049	80.4-69.9	+10.5	450-929	.484	117-355	.330	189-245	.771	583	473	+7.3
Evansville	15	928-1084	61.9-72.3	-10.4	325-869	.374	103-368	.280	175-268	.653	530	643	-7.5
Illinois State	14	989-861	70.6-61.5	+9.1	360-822	.438	86-245	.351	183-260	.704	560	469	+6.5
Indiana State	16	987-1115	61.7-69.7	-8.0	355-921	.385	76-268	.284	201-326	.617	607	610	-0.2
Loyola Chicago	15	1078-925	71.9-61.7	+10.2	402-937	.429	96-275	.349	178-258	.690	644	493	+10.1
Missouri State	16	1235-1050	77.2-65.6	+11.6	440-986	.446	94-239	.393	261-343	.761	649	498	+9.4
Northern Iowa	14	993-912	70.9-65.1	+5.8	332-817	.406	121-349	.347	208-265	.785	515	511	+0.3
Southern Illinois	15	1077-955	71.8-63.7	+8.1	400-909	.440	98-285	.344	179-271	.661	566	527	+2.6
Valparaiso	15	1021-954	68.1-63.6	+4.5	342-803	.426	130-382	.340	207-271	.764	458	589	-8.7

ATTENDANCE	Home	Average	Away	Average	Neutral	Average	Total	Average
Bradley	7-7740	1106	3-4184	1395	4-647	162	14-12571	898
Drake	6-23497	3916	6-15498	2583	3-2012	671	15-41007	2734
Evansville	7-3506	501	8-5265	658	0-0	0	15-8771	585
Illinois State	8-8233	1029	6-6271	1045	0-0	0	14-14504	1036
Indiana State	6-7594	1266	9-6760	751	1-0	0	16-14354	897
Loyola Chicago	7-6161	880	8-6171	771	0-0	0	15-12332	822
Missouri State	8-20419	2552	8-18773	2347	0-0	0	16-39192	2450
Northern Iowa	4-7288	1822	8-22670	2834	2-250	125	14-30208	2158
Southern Illinois	7-6229	890	7-3301	472	1-151	151	15-9681	645
Valparaiso	6-2068	345	8-12990	1624	1-1857	1857	15-16915	1128
Totals	66-92735	1405	71-101883	1435	12-4917	410	149-199535	1339



2019-20 Missouri Valley Conference
CONFERENCE BASKETBALL STATISTICS
Through games of Jan 13, 2020 (Conference games only)



SCORING OFFENSE	G	W-L	Pts	Avg/G
1. Bradley	3	3-0	249	83.0
2. Drake	3	2-1	244	81.3
3. Missouri State	4	4-0	304	76.0
4. Illinois State	3	2-1	225	75.0
5. Northern Iowa	3	1-2	213	71.0
6. Valparaiso	4	2-2	282	70.5
7. Loyola Chicago	4	3-1	252	63.0
8. Indiana State	4	0-4	251	62.8
9. Southern Illinois	4	1-3	238	59.5
10. Evansville	4	0-4	236	59.0

SCORING DEFENSE	G	Pts	Avg/G
1. Southern Illinois	4	235	58.8
Loyola Chicago	4	235	58.8
3. Bradley	3	187	62.3
4. Valparaiso	4	270	67.5
5. Illinois State	3	203	67.7
6. Missouri State	4	273	68.2
7. Drake	3	221	73.7
8. Indiana State	4	307	76.8
9. Northern Iowa	3	241	80.3
10. Evansville	4	322	80.5

SCORING MARGIN	G	Offense	Defense	Margin
1. Bradley	3	83.0	62.3	+20.7
2. Missouri State	4	76.0	68.2	+7.8
3. Drake	3	81.3	73.7	+7.7
4. Illinois State	3	75.0	67.7	+7.3
5. Loyola Chicago	4	63.0	58.8	+4.2
6. Valparaiso	4	70.5	67.5	+3.0
7. Southern Illinois	4	59.5	58.8	+0.8
8. Northern Iowa	3	71.0	80.3	-9.3
9. Indiana State	4	62.8	76.8	-14.0
10. Evansville	4	59.0	80.5	-21.5

FREE THROW PCT	G	FTM	FTA	Pct.
1. Drake	3	56	65	.862
2. Missouri State	4	82	109	.752
3. Valparaiso	4	45	60	.750
4. Northern Iowa	3	40	56	.714
5. Illinois State	3	50	74	.676
6. Bradley	3	35	52	.673
7. Loyola Chicago	4	45	70	.643
8. Indiana State	4	48	78	.615
9. Southern Illinois	4	46	80	.575
10. Evansville	4	47	84	.560

FIELD GOAL PERCENTAGE	G	FGM	FGA	Pct.
1. Drake	3	87	161	.540
2. Bradley	3	95	182	.522
3. Valparaiso	4	98	203	.483
4. Illinois State	3	76	179	.425
5. Loyola Chicago	4	94	223	.422
6. Indiana State	4	92	227	.405
7. Missouri State	4	102	253	.403
8. Northern Iowa	3	71	184	.386
9. Southern Illinois	4	85	230	.370
10. Evansville	4	82	236	.347

FIELD GOAL PCT DEFENSE	G	FGM	FGA	Pct.
1. Drake	3	75	196	.383
2. Bradley	3	66	170	.388
3. Loyola Chicago	4	91	234	.389
4. Valparaiso	4	84	214	.393
5. Illinois State	3	76	185	.411
6. Missouri State	4	94	224	.420
7. Southern Illinois	4	83	194	.428
8. Northern Iowa	3	85	195	.436
9. Evansville	4	117	240	.488
10. Indiana State	4	111	226	.491

3-POINT FG PCT	G	3FGM	3FGA	Pct.
1. Valparaiso	4	41	84	.488
2. Illinois State	3	23	56	.411
3. Bradley	3	24	61	.393
4. Northern Iowa	3	31	83	.373
5. Missouri State	4	18	54	.333
6. Indiana State	4	19	61	.311
7. Drake	3	14	45	.311
8. Loyola Chicago	4	19	65	.292
9. Evansville	4	25	93	.269
10. Southern Illinois	4	22	83	.265

3-POINT FG PCT DEFENSE	G	3FGM	3FGA	Pct.
1. Valparaiso	4	19	75	.253
2. Illinois State	3	17	64	.266
3. Loyola Chicago	4	21	68	.309
4. Southern Illinois	4	19	60	.317
5. Drake	3	24	71	.338
6. Northern Iowa	3	18	53	.340
7. Bradley	3	17	45	.378
8. Missouri State	4	32	81	.395
9. Evansville	4	41	100	.410
10. Indiana State	4	28	68	.412

REBOUNDING OFFENSE	G	Rebounds	Avg/G
1. Illinois State	3	128	42.7
2. Loyola Chicago	4	167	41.8
3. Missouri State	4	157	39.2
4. Northern Iowa	3	111	37.0
5. Drake	3	108	36.0
6. Bradley	3	105	35.0
Southern Illinois	4	140	35.0
8. Indiana State	4	138	34.5
9. Evansville	4	135	33.8
10. Valparaiso	4	105	26.3

REBOUNDING DEFENSE	G	Rebounds	Avg/G
1. Drake	3	90	30.0
2. Missouri State	4	123	30.8
3. Loyola Chicago	4	134	33.5
4. Bradley	3	103	34.3
5. Indiana State	4	139	34.8
6. Southern Illinois	4	142	35.5
7. Valparaiso	4	145	36.2
8. Illinois State	3	111	37.0
9. Northern Iowa	3	129	43.0
10. Evansville	4	178	44.5



2019-20 Missouri Valley Conference
CONFERENCE BASKETBALL STATISTICS
Through games of Jan 13, 2020 (Conference games only)



REBOUNDING MARGIN	G	Team	Avg.	Opp.	Avg.	Margin
1. Missouri State	4	157	39.2	123	30.8	+8.5
2. Loyola Chicago	4	167	41.8	134	33.5	+8.2
3. Drake	3	108	36.0	90	30.0	+6.0
4. Illinois State	3	128	42.7	111	37.0	+5.7
5. Bradley	3	105	35.0	103	34.3	+0.7
6. Indiana State	4	138	34.5	139	34.8	-0.2
7. Southern Illinois	4	140	35.0	142	35.5	-0.5
8. Northern Iowa	3	111	37.0	129	43.0	-6.0
9. Valparaiso	4	105	26.3	145	36.2	-10.0
10. Evansville	4	135	33.8	178	44.5	-10.8

ASSISTS	G	No.	Avg/G
1. Drake	3	58	19.3
2. Bradley	3	52	17.3
3. Valparaiso	4	59	14.8
4. Missouri State	4	55	13.8
5. Illinois State	3	40	13.3
6. Northern Iowa	3	37	12.3
7. Southern Illinois	4	49	12.3
8. Loyola Chicago	4	45	11.3
9. Indiana State	4	44	11.0
10. Evansville	4	37	9.3

TURNOVER MARGIN	G	Team	Avg.	Opp.	Avg.	Margin
1. Bradley	3	33	11.0	50	16.7	+5.7
2. Missouri State	4	54	13.5	73	18.3	+4.8
3. Southern Illinois	4	66	16.5	80	20.0	+3.5
4. Valparaiso	4	79	19.8	82	20.5	+0.8
5. Illinois State	3	38	12.7	37	12.3	-0.3
6. Evansville	4	69	17.3	66	16.5	-0.8
7. Loyola Chicago	4	64	16.0	58	14.5	-1.5
8. Indiana State	4	66	16.5	53	13.3	-3.3
9. Northern Iowa	3	51	17.0	37	12.3	-4.7
10. Drake	3	62	20.7	46	15.3	-5.3

OFFENSIVE REBOUNDS	G	No.	Avg/G
1. Missouri State	4	55	13.8
2. Southern Illinois	4	52	13.0
3. Illinois State	3	37	12.3
4. Indiana State	4	43	10.8
5. Evansville	4	43	10.8
6. Loyola Chicago	4	40	10.0
7. Northern Iowa	3	28	9.3
8. Drake	3	27	9.0
9. Bradley	3	25	8.3
10. Valparaiso	4	22	5.5

DEFENSIVE REB PCT.	G	D-Reb	Opp. OR	D-Reb%
1. Missouri State	4	102	28	.785
2. Loyola Chicago	4	127	36	.779
3. Illinois State	3	91	30	.752
4. Southern Illinois	4	88	31	.739
5. Indiana State	4	95	35	.731
6. Bradley	3	80	30	.727
7. Northern Iowa	3	83	34	.709
8. Evansville	4	92	47	.662
9. Drake	3	81	44	.648
10. Valparaiso	4	83	57	.593

BLOCKED SHOTS	G	No.	Avg/G
1. Bradley	3	23	7.7
2. Missouri State	4	23	5.8
3. Southern Illinois	4	21	5.3
4. Drake	3	15	5.0
5. Valparaiso	4	14	3.5
6. Northern Iowa	3	10	3.3
7. Evansville	4	12	3.0
8. Loyola Chicago	4	11	2.8
9. Indiana State	4	8	2.0
10. Illinois State	3	4	1.3

STEALS	G	No.	Avg/G
1. Valparaiso	4	54	13.5
2. Southern Illinois	4	40	10.0
3. Missouri State	4	40	10.0
4. Evansville	4	30	7.5
5. Bradley	3	22	7.3
6. Drake	3	22	7.3
7. Loyola Chicago	4	28	7.0
8. Indiana State	4	27	6.8
9. Illinois State	3	19	6.3
10. Northern Iowa	3	13	4.3

ASSIST/TURNOVER RATIO	G	Ast.	Avg.	T/O	Avg.	Ratio
1. Bradley	3	52	17.3	33	11.0	1.6
2. Illinois State	3	40	13.3	38	12.7	1.1
3. Missouri State	4	55	13.8	54	13.5	1.0
4. Drake	3	58	19.3	62	20.7	0.9
5. Valparaiso	4	59	14.8	79	19.8	0.7
6. Southern Illinois	4	49	12.3	66	16.5	0.7
7. Northern Iowa	3	37	12.3	51	17.0	0.7
8. Loyola Chicago	4	45	11.3	64	16.0	0.7
9. Indiana State	4	44	11.0	66	16.5	0.7
10. Evansville	4	37	9.3	69	17.3	0.5

DEFENSIVE REBOUNDS	G	No.	Avg/G
1. Loyola Chicago	4	127	31.8
2. Illinois State	3	91	30.3
3. Northern Iowa	3	83	27.7
4. Drake	3	81	27.0
5. Bradley	3	80	26.7
6. Missouri State	4	102	25.5
7. Indiana State	4	95	23.8
8. Evansville	4	92	23.0
9. Southern Illinois	4	88	22.0
10. Valparaiso	4	83	20.8

OFFENSIVE REB PCT.	G	O-Reb	Opp. DR	O-Reb%
1. Drake	3	27	46	.370
2. Missouri State	4	55	95	.367
3. Southern Illinois	4	52	111	.319
4. Illinois State	3	37	81	.314
5. Indiana State	4	43	104	.293
6. Loyola Chicago	4	40	98	.290
7. Bradley	3	25	73	.255
8. Evansville	4	43	131	.247
9. Northern Iowa	3	28	95	.228
10. Valparaiso	4	22	88	.200



2019-20 Missouri Valley Conference
CONFERENCE BASKETBALL STATISTICS
Through games of Jan 13, 2020 (Conference games only)



3-POINT FG MADE	G	No.	Avg/G
1. Northern Iowa	3	31	10.3
2. Valparaiso	4	41	10.3
3. Bradley	3	24	8.0
4. Illinois State	3	23	7.7
5. Evansville	4	25	6.3
6. Southern Illinois	4	22	5.5
7. Indiana State	4	19	4.8
Loyola Chicago	4	19	4.8
9. Drake	3	14	4.7
10. Missouri State	4	18	4.5



2019-20 Missouri Valley Conference
CONFERENCE BASKETBALL STATISTICS
Through games of Jan 13, 2020 (Conference games only)



Team	Conference	Pct.	PF	PA	Overall	Pct.	PF	PA	Current unbeaten streak
Missouri State	4-0	1.000	76.0	68.2	4-0	1.000	76.0	68.2	Missouri State -- 4
Bradley	3-0	1.000	83.0	62.3	3-0	1.000	83.0	62.3	Bradley -- 3
Loyola Chicago	3-1	.750	63.0	58.8	3-1	.750	63.0	58.8	Loyola Chicago -- 3
Drake	2-1	.667	81.3	73.7	2-1	.667	81.3	73.7	Valparaiso -- 2
Illinois State	2-1	.667	75.0	67.7	2-1	.667	75.0	67.7	Drake -- 1
Valparaiso	2-2	.500	70.5	67.5	2-2	.500	70.5	67.5	
Northern Iowa	1-2	.333	71.0	80.3	1-2	.333	71.0	80.3	
Southern Illinois	1-3	.250	59.5	58.8	1-3	.250	59.5	58.8	
Indiana State	0-4	.000	62.8	76.8	0-4	.000	62.8	76.8	
Evansville	0-4	.000	59.0	80.5	0-4	.000	59.0	80.5	

TEAM SUMMARIES	G	PF-PA	Avg score	Margin	FG-FGA	Pct.	3FG-FGA	Pct.	FT-FTA	Pct.	RebF	RebA	Margin
Bradley	3	249-187	83.0-62.3	+20.7	95-182	.522	24-61	.393	35-52	.673	105	103	+0.7
Drake	3	244-221	81.3-73.7	+7.7	87-161	.540	14-45	.311	56-65	.862	108	90	+6.0
Evansville	4	236-322	59.0-80.5	-21.5	82-236	.347	25-93	.269	47-84	.560	135	178	-10.8
Illinois State	3	225-203	75.0-67.7	+7.3	76-179	.425	23-56	.411	50-74	.676	128	111	+5.7
Indiana State	4	251-307	62.8-76.8	-14.0	92-227	.405	19-61	.311	48-78	.615	138	139	-0.2
Loyola Chicago	4	252-235	63.0-58.8	+4.3	94-223	.422	19-65	.292	45-70	.643	167	134	+8.2
Missouri State	4	304-273	76.0-68.2	+7.8	102-253	.403	18-54	.333	82-109	.752	157	123	+8.5
Northern Iowa	3	213-241	71.0-80.3	-9.3	71-184	.386	31-83	.373	40-56	.714	111	129	-6.0
Southern Illinois	4	238-235	59.5-58.8	+0.8	85-230	.370	22-83	.265	46-80	.575	140	142	-0.5
Valparaiso	4	282-270	70.5-67.5	+3.0	98-203	.483	41-84	.488	45-60	.750	105	145	-10.0

ATTENDANCE	Home	Average	Away	Average	Neutral	Average	Total	Average
Bradley	3-2479	826	0-0	0	0-0	0	3-2479	826
Drake	1-3712	3712	2-3462	1731	0-0	0	3-7174	2391
Evansville	2-609	304	2-1568	784	0-0	0	4-2177	544
Illinois State	2-1637	818	1-1058	1058	0-0	0	3-2695	898
Indiana State	2-2678	1339	2-1490	745	0-0	0	4-4168	1042
Loyola Chicago	2-719	360	2-1667	834	0-0	0	4-2386	596
Missouri State	2-5375	2688	2-733	366	0-0	0	4-6108	1527
Northern Iowa	0-0	0	3-6413	2138	0-0	0	3-6413	2138
Southern Illinois	2-788	394	2-823	412	0-0	0	4-1611	403
Valparaiso	2-837	418	2-1620	810	0-0	0	4-2457	614
Totals	18-18834	1046	18-18834	1046	0-0	0	36-37668	1046



2019-20 Missouri Valley Conference
INDIVIDUAL BASKETBALL STATISTICS
Through games of Jan 13, 2020 (All games)



To be ranked, a player must appear in at least 75.0% of their team's games.

SCORING								REBOUNDING							
	Cl	G	FG	3FG	FT	Pts	Avg/G		Cl	G	Off	Def	Total	Avg/G	
1. Petree, Lasha-BRAD	So	14	92	41	41	266	19.0	1. Franklin, Jasmine-MSU	So	16	38	110	148	9.3	
2. Rhine, Sara-DU	Sr	15	116	7	36	275	18.3	2. Feit, Abby-UE	Fr	15	25	108	133	8.9	
3. Hittner, Becca-DU	Sr	15	77	29	79	262	17.5	3. Brackmann, Chelsea-BRAD	Sr	13	25	89	114	8.8	
4. Willard, Alexa-MSU	Sr	16	105	26	35	271	16.9	4. O'Connor, Abby-LUC	Jr	15	30	94	124	8.3	
5. Wallen, Lexi-ILS	Sr	14	89	2	54	234	16.7	5. Brockmeyer, Abby-SIU	Jr	15	44	71	115	7.7	
6. Silvey, Makenzie-SIU	Jr	15	99	36	16	250	16.7	6. Rhine, Sara-DU	Sr	15	25	77	102	6.8	
7. Maggett, TeTe-ILS	Sr	12	73	16	32	194	16.2	7. Haack, Gabi-BRAD	Jr	14	34	58	92	6.6	
8. O'Connor, Abby-LUC	Jr	15	81	25	38	225	15.0	Wallen, Lexi-ILS	Sr	14	38	54	92	6.6	
9. Feit, Abby-UE	Fr	15	79	22	36	216	14.4	9. Gartner, Emily-MSU	Jr	16	30	73	103	6.4	
10. Martin, Nicole-SIU	Sr	15	77	2	46	202	13.5	10. Maggett, TeTe-ILS	Sr	12	14	62	76	6.3	
11. Haack, Gabi-BRAD	Jr	14	60	37	31	188	13.4	11. Poland, Jada-UE	Jr	15	35	59	94	6.3	
12. Day, Allison-LUC	So	15	85	0	24	194	12.9	12. Martin, Nicole-SIU	Sr	15	32	59	91	6.1	
Calip, Brice-MSU	Jr	15	53	12	76	194	12.9	13. McChristine, Jamyra-INS	Jr	16	44	53	97	6.1	
14. Rucker, Karli-UNI	Jr	14	62	23	34	181	12.9	14. Rice, Ellie-LUC	Jr	15	25	62	87	5.8	
15. Hales, Grace-Valpo	Sr	15	62	27	36	187	12.5	15. Gunnels, Bre-UNI	Jr	14	12	68	80	5.7	
16. Finley, Kam-UNI	So	14	52	23	32	159	11.4	16. Day, Allison-LUC	So	15	32	53	85	5.7	
17. Stoller, Addison-Valpo	Jr	15	50	16	54	170	11.3	17. Talbot, Megan-ILS	Sr	14	20	57	77	5.5	
18. Franklin, Jasmine-MSU	So	16	68	1	39	176	11.0	18. Stoller, Addison-Valpo	Jr	15	32	49	81	5.4	
19. Brockmeyer, Abby-SIU	Jr	15	53	9	40	155	10.3	19. Hittner, Becca-DU	Sr	15	13	66	79	5.3	
20. Gonzales, Janae-LUC	So	15	52	42	3	149	9.9	20. Burich, Monica-DU	Sr	14	28	43	71	5.1	
21. Poland, Jada-UE	Jr	15	61	9	15	146	9.7								
22. Brackmann, Chelsea-BRAD	Sr	13	47	0	31	125	9.6								
23. White, Nyjah-BRAD	Jr	14	56	0	22	134	9.6								
24. Cavey, Kristina-UNI	Jr	14	44	10	33	131	9.4								
25. McChristine, Jamyra-INS	Jr	16	64	0	18	146	9.1								
26. Weinman, Carrie-Valpo	So	15	50	26	6	132	8.8								
Collier, Kierra-DU	So	15	53	9	17	132	8.8								
28. Maahs, Megan-UNI	Jr	12	36	5	28	105	8.8								
29. Pitzer, Sommer-INS	Fr	15	41	21	28	131	8.7								
30. Crompton, Mary-ILS	Fr	14	40	33	8	121	8.6								

FIELD GOAL PCT						ASSISTS			
	Cl	G	FGM	FGA	Pct.		Cl	G	No. Avg/G
1. Rhine, Sara-DU	Sr	15	116	172	.674	1. Rose, Brenni-DU	Sr	15	77 5.1
2. Wallen, Lexi-ILS	Sr	14	89	150	.593	2. Wallace, Tiara-LUC	Sr	15	71 4.7
3. Franklin, Jasmine-MSU	So	16	68	117	.581	3. Maggett, TeTe-ILS	Sr	12	54 4.5
4. McChristine, Jamyra-INS	Jr	16	64	114	.561	4. Patrick, Brittney-SIU	Sr	15	63 4.2
5. Poland, Jada-UE	Jr	15	61	110	.555	5. Frederick, Shay-Valpo	So	15	60 4.0
6. Day, Allison-LUC	So	15	85	156	.545	6. Koenig, Tatum-BRAD	So	14	53 3.8
7. Cavey, Kristina-UNI	Jr	14	44	83	.530	7. Newman, Anna-UE	So	15	53 3.5
8. Hales, Grace-Valpo	Sr	15	62	120	.517	8. Rucker, Karli-UNI	Jr	14	48 3.4
9. Brackmann, Chelsea-BRAD	Sr	13	47	92	.511	9. Calip, Brice-MSU	Jr	15	51 3.4
10. Collier, Kierra-DU	So	15	53	107	.495	10. Nelson, Kristen-SIU	Sr	15	50 3.3
11. Rose, Brenni-DU	Sr	15	49	99	.495	11. Collier, Kierra-DU	So	15	48 3.2
12. White, Nyjah-BRAD	Jr	14	56	115	.487	12. Bhinhar, Mya-MSU	So	16	51 3.2
13. Willard, Alexa-MSU	Sr	16	105	218	.482	13. Monahan, Maddie-DU	Jr	15	46 3.1
14. Martin, Nicole-SIU	Sr	15	77	161	.478	14. O'Connor, Abby-LUC	Jr	15	41 2.7
15. Maahs, Megan-UNI	Jr	12	36	76	.474	Wallace, Makayla-UE	So	15	41 2.7



2019-20 Missouri Valley Conference
INDIVIDUAL BASKETBALL STATISTICS
Through games of Jan 13, 2020 (All games)



FREE THROW PCT	Cl	G	FTM	FTA	Pct.
1. Hales, Grace-Valpo	Sr	15	36	40	.900
2. Willard, Alexa-MSU	Sr	16	35	39	.897
3. O'Connor, Abby-LUC	Jr	15	38	43	.884
4. Hittner, Becca-DU	Sr	15	79	90	.878
5. Maahs, Megan-UNI	Jr	12	28	32	.875
6. Gunnels, Bre-UNI	Jr	14	30	36	.833
7. Petree, Lasha-BRAD	So	14	41	50	.820
8. Rhine, Sara-DU	Sr	15	36	44	.818
9. Rucker, Karli-UNI	Jr	14	34	42	.810
10. Maggett, TeTe-ILS	Sr	12	32	40	.800
11. Stoller, Addison-Valpo	Jr	15	54	68	.794
12. Calip, Brice-MSU	Jr	15	76	96	.792
13. Koenig, Tatum-BRAD	So	14	28	36	.778
14. Haack, Gabi-BRAD	Jr	14	31	40	.775
15. Cavey, Kristina-UNI	Jr	14	33	43	.767

STEALS	Cl	G	No.	Avg/G
1. Wallace, Makayla-UE	So	15	36	2.4
2. Frederick, Shay-Valpo	So	15	29	1.9
3. Maggett, TeTe-ILS	Sr	12	22	1.8
4. Bhinhar, Mya-MSU	So	16	29	1.8
5. Weinman, Carie-Valpo	So	15	27	1.8
6. Wallace, Tiara-LUC	Sr	15	26	1.7
7. Stoller, Addison-Valpo	Jr	15	25	1.7
8. Williams, Del'Janae-INS	Fr	15	24	1.6
9. Petree, Lasha-BRAD	So	14	22	1.6
10. Franklin, Jasmine-MSU	So	16	25	1.6
11. Silvey, Makenzie-SIU	Jr	15	23	1.5
12. Calip, Brice-MSU	Jr	15	22	1.5
Monahan, Maddie-DU	Jr	15	22	1.5
Nelson, Kristen-SIU	Sr	15	22	1.5
Feit, Abby-UE	Fr	15	22	1.5

3-POINT FG PCT	Cl	G	3FG	FGA	Pct.
1. Willard, Alexa-MSU	Sr	16	26	55	.473
2. Stoller, Addison-Valpo	Jr	15	16	37	.432
3. Gonzales, Janae-LUC	So	15	42	98	.429
Monahan, Maddie-DU	Jr	15	18	42	.429
5. Kroeger, Nicole-UNI	Jr	14	26	61	.426
6. Hales, Grace-Valpo	Sr	15	27	67	.403
7. Crompton, Mary-ILS	Fr	14	33	83	.398
8. Koenig, Tatum-BRAD	So	14	15	38	.395
9. Petree, Lasha-BRAD	So	14	41	109	.376
10. Negaard, Maggie-DU	So	15	15	40	.375
11. Silvey, Makenzie-SIU	Jr	15	36	99	.364
12. Haack, Gabi-BRAD	Jr	14	37	103	.359
13. Gueldner, Sarah Beth-DU	Fr	13	14	39	.359
14. Ruffridge, Elle-MSU	Jr	16	20	56	.357
15. Weinman, Carie-Valpo	So	15	26	73	.356

3-POINT FG MADE	Cl	G	3FG	Avg/G
1. Petree, Lasha-BRAD	So	14	41	2.9
2. Gonzales, Janae-LUC	So	15	42	2.8
3. Haack, Gabi-BRAD	Jr	14	37	2.6
4. Silvey, Makenzie-SIU	Jr	15	36	2.4
5. Crompton, Mary-ILS	Fr	14	33	2.4
6. Hittner, Becca-DU	Sr	15	29	1.9
7. Kroeger, Nicole-UNI	Jr	14	26	1.9
8. Hales, Grace-Valpo	Sr	15	27	1.8
9. Weinman, Carie-Valpo	So	15	26	1.7
10. O'Connor, Abby-LUC	Jr	15	25	1.7
11. Rucker, Karli-UNI	Jr	14	23	1.6
Finley, Kam-UNI	So	14	23	1.6
13. Willard, Alexa-MSU	Sr	16	26	1.6
14. Feit, Abby-UE	Fr	15	22	1.5
15. Williams, Del'Janae-INS	Fr	15	21	1.4
Pitzer, Sommer-INS	Fr	15	21	1.4

BLOCKED SHOTS	Cl	G	No.	Avg/G
1. Petree, Lasha-BRAD	So	14	25	1.8
2. Feit, Abby-UE	Fr	15	25	1.7
3. Franklin, Jasmine-MSU	So	16	21	1.3
4. Morrison, Caitlin-Valpo	Jr	15	17	1.1
5. Gartner, Emily-MSU	Jr	16	15	0.9
6. Gunnels, Bre-UNI	Jr	14	13	0.9
7. Maahs, Megan-UNI	Jr	12	11	0.9
8. O'Connor, Abby-LUC	Jr	15	12	0.8
White, Grace-Valpo	Jr	15	12	0.8
10. Williams, Del'Janae-INS	Fr	15	11	0.7
Rhine, Sara-DU	Sr	15	11	0.7
12. Wolf, Cynthia-UNI	So	14	10	0.7
White, Nyjah-BRAD	Jr	14	10	0.7
14. Brackmann, Chelsea-BRAD	Sr	13	9	0.7
15. McChristine, Jamyra-INS	Jr	16	11	0.7

ASSIST/TURNOVER RATIO	Cl	G	Ast.	T/O	Ratio
1. Nelson, Kristen-SIU	Sr	15	50	24	2.1
2. Calip, Brice-MSU	Jr	15	51	28	1.8
3. Rose, Brenni-DU	Sr	15	77	47	1.6
4. Monahan, Maddie-DU	Jr	15	46	29	1.6
5. Frederick, Shay-Valpo	So	15	60	38	1.6
6. Koenig, Tatum-BRAD	So	14	53	34	1.6
7. Collier, Kierra-DU	So	15	48	33	1.5
8. Newman, Anna-UE	So	15	53	41	1.3
9. Wallace, Tiara-LUC	Sr	15	71	55	1.3
10. Patrick, Brittney-SIU	Sr	15	63	51	1.2
11. Rucker, Karli-UNI	Jr	14	48	39	1.2
12. Maggett, TeTe-ILS	Sr	12	54	48	1.1
13. Bhinhar, Mya-MSU	So	16	51	46	1.1



2019-20 Missouri Valley Conference
INDIVIDUAL BASKETBALL STATISTICS
Through games of Jan 13, 2020 (All games)



OFFENSIVE REBOUNDS	Cl	G	No.	Avg/G
1. Brockmeyer, Abby-SIU	Jr	15	44	2.9
2. McChristine, Janyra-INS	Jr	16	44	2.8
3. Wallen, Lexi-ILS	Sr	14	38	2.7
4. Haack, Gabi-BRAD	Jr	14	34	2.4
5. Franklin, Jasmine-MSU	So	16	38	2.4
6. Poland, Jada-UE	Jr	15	35	2.3
7. Martin, Nicole-SIU	Sr	15	32	2.1
Stoller, Addison-Valpo	Jr	15	32	2.1
Day, Allison-LUC	So	15	32	2.1
10. O'Connor, Abby-LUC	Jr	15	30	2.0
Burich, Monica-DU	Sr	14	28	2.0
12. Brackmann, Chelsea-BRAD	Sr	13	25	1.9
13. Gartner, Emily-MSU	Jr	16	30	1.9
14. Cavey, Kristina-UNI	Jr	14	25	1.8
15. Rhine, Sara-DU	Sr	15	25	1.7
Rice, Ellie-LUC	Jr	15	25	1.7
Feit, Abby-UE	Fr	15	25	1.7

DEFENSIVE REBOUNDS	Cl	G	No.	Avg/G
1. Feit, Abby-UE	Fr	15	108	7.2
2. Franklin, Jasmine-MSU	So	16	110	6.9
3. Brackmann, Chelsea-BRAD	Sr	13	89	6.8
4. O'Connor, Abby-LUC	Jr	15	94	6.3
5. Maggett, TeTe-ILS	Sr	12	62	5.2
6. Rhine, Sara-DU	Sr	15	77	5.1
7. Gunnels, Bre-UNI	Jr	14	68	4.9
8. Brockmeyer, Abby-SIU	Jr	15	71	4.7
9. Gartner, Emily-MSU	Jr	16	73	4.6
10. Hittner, Becca-DU	Sr	15	66	4.4
11. Haack, Gabi-BRAD	Jr	14	58	4.1
12. Rice, Ellie-LUC	Jr	15	62	4.1
13. Talbot, Megan-ILS	Sr	14	57	4.1
14. Poland, Jada-UE	Jr	15	59	3.9
Martin, Nicole-SIU	Sr	15	59	3.9

MINUTES PLAYED	Cl	G	No.	Avg/G
1. Feit, Abby-UE	Fr	15	555	37.0
2. O'Connor, Abby-LUC	Jr	15	502	33.5
3. Koenig, Tatum-BRAD	So	14	447	31.9
4. Silvey, Makenzie-SIU	Jr	15	478	31.9
5. Maggett, TeTe-ILS	Sr	12	379	31.6
6. Wallace, Tiara-LUC	Sr	15	473	31.5
7. Petree, Lasha-BRAD	So	14	440	31.4
8. Haack, Gabi-BRAD	Jr	14	435	31.1
9. Calip, Brice-MSU	Jr	15	466	31.1
10. Willard, Alexa-MSU	Sr	16	495	30.9
11. Patrick, Brittney-SIU	Sr	15	454	30.3
12. Hales, Grace-Valpo	Sr	15	452	30.1
13. Williams, Del'Janae-INS	Fr	15	441	29.4
14. Nelson, Kristen-SIU	Sr	15	439	29.3
15. Pitzer, Sommer-INS	Fr	15	436	29.1
16. Weinman, Carie-Valpo	So	15	429	28.6
17. Frederick, Shay-Valpo	So	15	427	28.5
Rice, Ellie-LUC	Jr	15	427	28.5
19. Stoller, Addison-Valpo	Jr	15	425	28.3
20. Gonzales, Janae-LUC	So	15	418	27.9
21. Saylor, Paige-ILS	Jr	14	389	27.8
22. Franklin, Jasmine-MSU	So	16	434	27.1
23. Wallen, Lexi-ILS	Sr	14	375	26.8
24. Rucker, Karli-UNI	Jr	14	374	26.7
25. Brockmeyer, Abby-SIU	Jr	15	400	26.7
26. Bhinhar, Mya-MSU	So	16	412	25.8
27. Hunter, Marie-INS	Jr	16	411	25.7
28. Hittner, Becca-DU	Sr	15	381	25.4
29. Rhine, Sara-DU	Sr	15	380	25.3
30. Redmond, Juliann-ILS	Jr	14	353	25.2



2019-20 Missouri Valley Conference
INDIVIDUAL BASKETBALL STATISTICS
Through games of Jan 13, 2020 (All games)



TEAM IDENTIFICATION	Team ID
Bradley	BRAD
Drake	DU
Evansville	UE
Illinois State	ILS
Indiana State	INS
Loyola Chicago	LUC
Missouri State	MSU
Northern Iowa	UNI
Southern Illinois	SIU
Valparaiso	VALPO



2019-20 Missouri Valley Conference
INDIVIDUAL BASKETBALL STATISTICS
Through games of Jan 13, 2020 (Conference games only)



To be ranked, a player must appear in at least 75.0% of their team's games.

SCORING								REBOUNDING							
	Cl	G	FG	3FG	FT	Pts	Avg/G		Cl	G	Off	Def	Total	Avg/G	
1. Petree, Lasha-BRAD	So	3	32	10	10	84	28.0	1. Feit, Abby-UE	Fr	4	5	34	39	9.8	
2. Hittner, Becca-DU	Sr	3	15	5	38	73	24.3	O'Connor, Abby-LUC	Jr	4	8	31	39	9.8	
3. Wallen, Lexi-ILS	Sr	3	18	0	15	51	17.0	3. Franklin, Jasmine-MSU	So	4	12	23	35	8.8	
4. Willard, Alexa-MSU	Sr	4	24	4	14	66	16.5	4. Rhine, Sara-DU	Sr	3	4	21	25	8.3	
5. Rhine, Sara-DU	Sr	3	23	1	2	49	16.3	5. Brockmeyer, Abby-SIU	Jr	4	17	15	32	8.0	
6. O'Connor, Abby-LUC	Jr	4	21	6	15	63	15.8	Redmond, Juliunn-ILS	Jr	3	8	16	24	8.0	
7. Maggett, TeTe-ILS	Sr	3	16	6	7	45	15.0	7. Rice, Ellie-LUC	Jr	4	5	24	29	7.3	
8. Redmond, Juliunn-ILS	Jr	3	15	5	8	43	14.3	8. Haack, Gabi-BRAD	Jr	3	9	12	21	7.0	
9. White, Nyjah-BRAD	Jr	3	18	0	5	41	13.7	Talbot, Megan-ILS	Sr	3	5	16	21	7.0	
10. Rucker, Karli-UNI	Jr	3	12	5	11	40	13.3	10. Martin, Nicole-SIU	Sr	4	8	19	27	6.8	
11. Hales, Grace-Valpo	Sr	4	18	12	4	52	13.0	11. Day, Allison-LUC	So	4	7	19	26	6.5	
12. Feit, Abby-UE	Fr	4	17	7	10	51	12.8	McChristine, Jamyra-INS	Jr	4	6	20	26	6.5	
13. Brackmann, Chelsea-BRAD	Sr	3	15	0	8	38	12.7	13. Wallen, Lexi-ILS	Sr	3	7	12	19	6.3	
14. Calip, Brice-MSU	Jr	4	10	1	29	50	12.5	14. Maggett, TeTe-ILS	Sr	3	5	13	18	6.0	
Stoller, Addison-Valpo	Jr	4	14	4	18	50	12.5	Brackmann, Chelsea-BRAD	Sr	3	1	17	18	6.0	
16. Silvey, Makenzie-SIU	Jr	4	19	6	5	49	12.3	16. Gartner, Emily-MSU	Jr	4	11	12	23	5.8	
17. Mayo, CeCe-INS	Jr	4	15	3	14	47	11.8	17. Gunnels, Bre-UNI	Jr	3	2	15	17	5.7	
Bracy, Lola-UE		4	17	5	8	47	11.8	18. Hittner, Becca-DU	Sr	3	1	15	16	5.3	
19. Martin, Nicole-SIU	Sr	4	17	1	11	46	11.5	19. Simon-Ressler, Rose-UNI	Sr	3	3	12	15	5.0	
20. Frederick, Shay-Valpo	So	4	16	5	6	43	10.8	20. Poland, Jada-UE	Jr	4	11	8	19	4.8	
21. Finley, Kam-UNI	So	3	11	5	5	32	10.7	Stoller, Addison-Valpo	Jr	4	4	15	19	4.8	
22. Haack, Gabi-BRAD	Jr	3	11	7	2	31	10.3								
23. Weinman, Carie-Valpo	So	4	17	6	1	41	10.3								
24. Gonzales, Janae-LUC	So	4	14	10	2	40	10.0								
Franklin, Jasmine-MSU	So	4	15	0	10	40	10.0								
26. Cavey, Kristina-UNI	Jr	3	10	3	6	29	9.7								
27. Wallace, Makayla-UE	So	4	10	5	13	38	9.5								
McChristine, Jamyra-INS	Jr	4	17	0	4	38	9.5								
29. Day, Allison-LUC	So	4	16	0	5	37	9.3								
30. Burich, Monica-DU	Sr	3	13	1	0	27	9.0								
Kroeger, Nicole-UNI	Jr	3	9	9	0	27	9.0								
Collier, Kierra-DU	So	3	11	1	4	27	9.0								



2019-20 Missouri Valley Conference
INDIVIDUAL BASKETBALL STATISTICS
Through games of Jan 13, 2020 (Conference games only)



FREE THROW PCT		Cl	G	FTM	FTA	Pct.
1.	Cavey, Kristina-UNI	Jr	3	6	6	1.000
2.	Hittner, Becca-DU	Sr	3	38	39	.974
3.	Stoller, Addison-Valpo	Jr	4	18	20	.900
4.	Willard, Alexa-MSU	Sr	4	14	16	.875
5.	Rucker, Karli-UNI	Jr	3	11	13	.846
6.	O'Connor, Abby-LUC	Jr	4	15	18	.833
	Petree, Lasha-BRAD	So	3	10	12	.833
	Felt, Abby-UE	Fr	4	10	12	.833
9.	Calip, Brice-MSU	Jr	4	29	36	.806
10.	Bracy, Lola-UE		4	8	10	.800
	Redmond, Juliunn-ILS	Jr	3	8	10	.800
12.	Wallen, Lexi-ILS	Sr	3	15	19	.789
13.	Maggett, TeTe-ILS	Sr	3	7	9	.778
14.	Patrick, Brittney-SIU	Sr	4	9	12	.750
	Saylor, Paige-ILS	Jr	3	6	8	.750

STEALS		Cl	G	No.	Avg/G
1.	Frederick, Shay-Valpo	So	4	13	3.3
2.	Weinman, Carie-Valpo	So	4	11	2.8
3.	Bhinhar,Mya-MSU	So	4	10	2.5
	Stoller, Addison-Valpo	Jr	4	10	2.5
5.	Maggett, TeTe-ILS	Sr	3	7	2.3
6.	Calip,Brice-MSU	Jr	4	8	2.0
	Hittner,Becca-DU	Sr	3	6	2.0
8.	Wallace, Tiara-LUC	Sr	4	7	1.8
	Nelson,Kristen-SIU	Sr	4	7	1.8
	Feit,Abby-UE	Fr	4	7	1.8
	Rice, Ellie-LUC	Jr	4	7	1.8
12.	Rose,Brenni-DU	Sr	3	5	1.7
	Brackmann, Chelsea-BRAD	Sr	3	5	1.7
14.	Franklin,Jasmine-MSU	So	4	6	1.5
	Silvey,Makenzie-SIU	Jr	4	6	1.5
	Mayo,CeCe-INS	Jr	4	6	1.5
	Martin,Nicole-SIU	Sr	4	6	1.5
	Newman,Anna-UE	So	4	6	1.5

3-POINT FG PCT		Cl	G	3FG	FGA	Pct.
1.	Redmond, Juliunn-ILS	Jr	3	5	7	.714
2.	Hales, Grace-Valpo	Sr	4	12	17	.706
3.	Stoller, Addison-Valpo	Jr	4	4	6	.667
4.	Weinman, Carie-Valpo	So	4	6	11	.545
5.	Kroeger, Nicole-UNI	Jr	3	9	17	.529
6.	Gonzales, Janae-LUC	So	4	10	20	.500
	Maggett, TeTe-ILS	Sr	3	6	12	.500
	Wilkins, Ryan-BRAD	Sr	3	3	6	.500
9.	Haack, Gabi-BRAD	Jr	3	7	15	.467
10.	Manning, Sydney-MSU	So	4	6	14	.429
11.	Willard, Alexa-MSU	Sr	4	4	10	.400
12.	Petree, Lasha-BRAD	So	3	10	26	.385
	Frederick, Shay-Valpo	So	4	5	13	.385
	Wallace, Makayla-UE	So	4	5	13	.385
15.	Elder, Jasmine-INS	Fr	4	4	11	.364

3-POINT FG MADE		Cl	G	3FG	Avg/G
1.	Petree, Lasha-BRAD	So	3	10	3.3
2.	Hales, Grace-Valpo	Sr	4	12	3.0
	Kroeger,Nicole-UNI	Jr	3	9	3.0
4.	Gonzales, Janae-LUC	So	4	10	2.5
5.	Haack, Gabi-BRAD	Jr	3	7	2.3
6.	Maggett, TeTe-ILS	Sr	3	6	2.0
7.	Feit,Abby-UE	Fr	4	7	1.8
8.	Redmond, Juliunn-ILS	Jr	3	5	1.7
	Rucker,Karli-UNI	Jr	3	5	1.7
	Finley,Kam-UNI	So	3	5	1.7
	Crompton, Mary-ILS	Fr	3	5	1.7
	Hittner,Becca-DU	Sr	3	5	1.7
13.	Weinman, Carrie-Valpo	So	4	6	1.5
	Pitzer,Sommer-INS	Fr	4	6	1.5
	Silvey,Makenzie-SIU	Jr	4	6	1.5
	O'Connor, Abby-LUC	Jr	4	6	1.5
	Manning,Sydney-MSU	So	4	6	1.5

BLOCKED SHOTS		Cl	G	No.	Avg/G
1.	Petree, Lasha-BRAD	So	3	13	4.3
2.	Burich,Monica-DU	Sr	3	5	1.7
3.	Feit,Abby-UE	Fr	4	6	1.5
4.	Wolf,Cynthia-UNI	So	3	4	1.3
	Rhine,Sara-DU	Sr	3	4	1.3
6.	Franklin,Jasmine-MSU	So	4	5	1.3
7.	Calip,Brice-MSU	Jr	4	4	1.0
	Gartner,Emily-MSU	Jr	4	4	1.0
	Brockmeyer,Abby-SIU	Jr	4	4	1.0
	O'Connor, Abby-LUC	Jr	4	4	1.0
	White, Grace-Valpo	Jr	4	4	1.0
	Nelson,Kristen-SIU	Sr	4	4	1.0
	Ealy,Shameka-MSU	Sr	3	3	1.0
14.	Patrick,Brittney-SIU	Sr	4	3	0.8
	Weinman, Carrie-Valpo	So	4	3	0.8
	Martin,Nicole-SIU	Sr	4	3	0.8
	Keita,Awa-SIU	Jr	4	3	0.8
	McChristine,Jamyra-INS	Jr	4	3	0.8
	Nolan, Kat-LUC	Jr	4	3	0.8

ASSIST/TURNOVER RATIO		Cl	G	Ast.	T/O	Ratio
1.	Maggett, TeTe-ILS	Sr	3	14	5	2.8
2.	Koenig, Tatum-BRAD	So	3	16	7	2.3
3.	Rucker,Karli-UNI	Jr	3	15	7	2.1
4.	Saylor, Paige-ILS	Jr	3	9	5	1.8
5.	Calip,Brice-MSU	Jr	4	14	8	1.8
6.	Wallace, Tiara-LUC	Sr	4	22	16	1.4
7.	Frederick, Shay-Valpo	So	4	16	12	1.3
	Nelson,Kristen-SIU	Sr	4	12	9	1.3
9.	White, Nyjah-BRAD	Jr	3	9	7	1.3
10.	Rose,Brenni-DU	Sr	3	12	10	1.2
11.	Collier,Kierra-DU	So	3	12	11	1.1
12.	Hittner,Becca-DU	Sr	3	10	10	1.0
13.	Patrick,Brittney-SIU	Sr	4	14	16	0.9
14.	Williams,Del'Janae-INS	Fr	4	12	14	0.9



2019-20 Missouri Valley Conference
INDIVIDUAL BASKETBALL STATISTICS
Through games of Jan 13, 2020 (Conference games only)



OFFENSIVE REBOUNDS	Cl	G	No.	Avg/G
1. Brockmeyer, Abby-SIU	Jr	4	17	4.3
2. Franklin, Jasmine-MSU	So	4	12	3.0
Haack, Gabi-BRAD	Jr	3	9	3.0
4. Gartner, Emily-MSU	Jr	4	11	2.8
Poland, Jada-UE	Jr	4	11	2.8
6. Redmond, Juliunn-ILS	Jr	3	8	2.7
7. Hipp, Abby-MSU	Jr	4	10	2.5
8. Wallen, Lexi-ILS	Sr	3	7	2.3
9. O'Connor, Abby-LUC	Jr	4	8	2.0
Martin, Nicole-SIU	Sr	4	8	2.0
Burich, Monica-DU	Sr	3	6	2.0
12. Day, Allison-LUC	So	4	7	1.8
13. Maggett, TeTe-ILS	Sr	3	5	1.7
Talbot, Megan-ILS	Sr	3	5	1.7
Cavey, Kristina-UNI	Jr	3	5	1.7

DEFENSIVE REBOUNDS	Cl	G	No.	Avg/G
1. Feit, Abby-UE	Fr	4	34	8.5
2. O'Connor, Abby-LUC	Jr	4	31	7.8
3. Rhine, Sara-DU	Sr	3	21	7.0
4. Rice, Ellie-LUC	Jr	4	24	6.0
5. Franklin, Jasmine-MSU	So	4	23	5.8
6. Brackmann, Chelsea-BRAD	Sr	3	17	5.7
7. Talbot, Megan-ILS	Sr	3	16	5.3
Redmond, Juliunn-ILS	Jr	3	16	5.3
9. McChristine, Janyra-INS	Jr	4	20	5.0
Hittner, Becca-DU	Sr	3	15	5.0
Gunnels, Bre-UNI	Jr	3	15	5.0
12. Martin, Nicole-SIU	Sr	4	19	4.8
Day, Allison-LUC	So	4	19	4.8
14. Maggett, TeTe-ILS	Sr	3	13	4.3
15. Haack, Gabi-BRAD	Jr	3	12	4.0
Simon-Ressler, Rose-UNI	Sr	3	12	4.0
Wallen, Lexi-ILS	Sr	3	12	4.0

MINUTES PLAYED	Cl	G	No.	Avg/G
1. O'Connor, Abby-LUC	Jr	4	149	37.2
2. Feit, Abby-UE	Fr	4	148	37.0
3. Rice, Ellie-LUC	Jr	4	138	34.5
Wallace, Tiara-LUC	Sr	4	138	34.5
5. Koenig, Tatum-BRAD	So	3	103	34.3
6. Silvey, Makenzie-SIU	Jr	4	132	33.0
Petree, Lasha-BRAD	So	3	99	33.0
8. Willard, Alexa-MSU	Sr	4	130	32.5
9. Pitzer, Sommer-INS	Fr	4	128	32.0
Rucker, Karli-UNI	Jr	3	96	32.0
11. Weinman, Carrie-Valpo	So	4	127	31.8
12. Calip, Brice-MSU	Jr	4	126	31.5
13. Patrick, Brittney-SIU	Sr	4	124	31.0
14. Gonzales, Janae-LUC	So	4	120	30.0
15. Maggett, TeTe-ILS	Sr	3	88	29.3
Haack, Gabi-BRAD	Jr	3	88	29.3
17. Hales, Grace-Valpo	Sr	4	117	29.3
18. Bracy, Lola-UE		4	115	28.8
19. Nelson, Kristen-SIU	Sr	4	113	28.3
20. Newman, Anna-UE	So	4	112	28.0
21. Frederick, Shay-Valpo	So	4	111	27.8
22. Williams, Del'Janae-INS	Fr	4	110	27.5
Stoller, Addison-Valpo	Jr	4	110	27.5
24. Hunter, Marie-INS	Jr	4	108	27.0
Rhine, Sara-DU	Sr	3	81	27.0
26. Monahan, Maddie-DU	Jr	3	80	26.7
Hittner, Becca-DU	Sr	3	80	26.7
Saylor, Paige-ILS	Jr	3	80	26.7
29. Franklin, Jasmine-MSU	So	4	105	26.3
30. Talbot, Megan-ILS	Sr	3	78	26.0



2019-20 Missouri Valley Conference
INDIVIDUAL BASKETBALL STATISTICS
Through games of Jan 13, 2020 (Conference games only)



TEAM IDENTIFICATION	Team ID
Bradley	BRAD
Drake	DU
Evansville	UE
Illinois State	ILS
Indiana State	INS
Loyola Chicago	LUC
Missouri State	MSU
Northern Iowa	UNI
Southern Illinois	SIU
Valparaiso	VALPO



2019-20 Missouri Valley Conference
Conference Team Highs
Through games of Jan 13, 2020 (All games)



TEAM HIGHS (highest totals made by)

Points	111	Missouri State vs William Jewell (12-31-19)
	104	Drake vs Northern Iowa (01-03-20)
	103	Southern Illinois at SIUE (11-08-19)
	103	Drake vs Waldorf (12-05-19)
	101	Bradley vs Eureka (11-16-19)
Margin	85 (103-18)	Drake vs Waldorf (12-05-19)
	72 (111-39)	Missouri State vs William Jewell (12-31-19)
	62 (101-39)	Bradley vs Eureka (11-16-19)
	46 (95-49)	Valparaiso vs Chicago State (12-28-19)
	45 (98-53)	Loyola Chicago at Chicago State (11-19-19)
Field goals made	41	Bradley vs Eureka (11-16-19)
	41	Drake vs Waldorf (12-05-19)
	41	Missouri State vs William Jewell (12-31-19)
	37	Drake at South Dakota (11-13-19)
	37	Missouri State at Oklahoma (11-14-19)
	37	Loyola Chicago at Chicago State (11-19-19)
	37	Drake vs Northern Iowa (01-03-20)
Field goal attempts	82	Evansville vs Brescia (11-05-19)
	77	Drake at South Dakota (11-13-19)
	75	Bradley vs Eureka (11-16-19)
	73	Illinois State vs Truman State (11-05-19)
	73	Drake vs Waldorf (12-05-19)
Field goal percentage	.639 (23-36)	Evansville at Austin Peay (11-21-19)
	.621 (41-66)	Missouri State vs William Jewell (12-31-19)
	.600 (27-45)	Drake at Southern Illinois (01-12-20)
	.577 (30-52)	Valparaiso at Evansville (01-12-20)
	.576 (34-59)	Bradley vs Indiana State (01-05-20)
3-Pt FG made	15	Drake vs Iowa State (11-10-19)
	15	Northern Iowa at Missouri (11-13-19)
	14	Bradley vs Eureka (11-16-19)
	14	Northern Iowa at Drake (01-03-20)
	14	Valparaiso vs Missouri State (01-05-20)
	14	Valparaiso at Evansville (01-12-20)
3-Pt FG attempts	42	Northern Iowa at Missouri (11-13-19)
	40	Evansville vs Brescia (11-05-19)
	36	Evansville at SIUE (11-13-19)
	35	Valparaiso vs UIC (12-15-19)
	35	Northern Iowa at Drake (01-03-20)
3-Pt percentage	.700 (7-10)	Evansville at Austin Peay (11-21-19)
	.636 (14-22)	Valparaiso vs Missouri State (01-05-20)
	.588 (10-17)	Northern Iowa vs North Dakota State (11-06-19)
	.579 (11-19)	Illinois State vs Jackson State (12-19-19)
	.571 (8-14)	Illinois State vs SIUE (12-16-19)
Free throws made	29	Bradley vs Miami (OH) (11-23-19)
	28	Missouri State at Valparaiso (01-05-20)
	27	Northern Iowa vs North Dakota State (11-06-19)
	27	Valparaiso vs Bowling Green (11-24-19)
	24	Illinois State vs Indiana State (01-03-20)
Free throw attempts	38	Bradley vs Miami (OH) (11-23-19)
	36	Missouri State at Valparaiso (01-05-20)
	33	Indiana State vs SEMO (12-21-19)
	33	Illinois State vs Indiana State (01-03-20)
	32	Northern Iowa vs North Dakota State (11-06-19)
	32	Valparaiso vs Bowling Green (11-24-19)
Free throw percentage	1.000 (17-17)	Missouri State at Minnesota (11-05-19)

	1.000	(11-11)	Drake vs Waldorf (12-05-19)
	.944	(17-18)	Northern Iowa at Iowa State (12-22-19)
	.923	(12-13)	Bradley at Michigan (11-10-19)
	.923	(12-13)	Drake vs Auburn (12-01-19)
	.923	(12-13)	Northern Iowa at Missouri State (01-12-20)
Rebounds	63		Bradley vs Eureka (11-16-19)
	59		Bradley at Western Illinois (11-20-19)
	57		Drake at Northern Illinois (12-29-19)
	56		Loyola Chicago at Detroit Mercy (11-05-19)
	56		Loyola Chicago at Kansas City (11-22-19)
	56		Missouri State vs William Jewell (12-31-19)
Assists	33		Drake vs Waldorf (12-05-19)
	32		Bradley vs Eureka (11-16-19)
	31		Loyola Chicago at Chicago State (11-19-19)
	27		Illinois State vs Jackson State (12-19-19)
	26		Drake vs Western Illinois (11-24-19)
	26		Drake vs Northern Iowa (01-03-20)
Steals	25		Drake vs Waldorf (12-05-19)
	21		Valparaiso at Evansville (01-12-20)
	18		Valparaiso vs UIC (12-15-19)
	16		Evansville vs Brescia (11-05-19)
	16		Southern Illinois vs Drake (01-12-20)
Blocked shots	15		Missouri State vs William Jewell (12-31-19)
	12		Drake vs Waldorf (12-05-19)
	10		Indiana State vs Northern Kentucky (12-16-19)
	9		Indiana State at UIC (11-19-19)
	9		Northern Iowa at Omaha (12-10-19)
	9		Valparaiso vs Chicago State (12-28-19)
	9		Bradley vs Evansville (01-03-20)
	9		Southern Illinois vs Northern Iowa (01-10-20)
Turnovers	33		Evansville at Austin Peay (11-21-19)
	31		Evansville vs Eastern Illinois (11-19-19)
	28		Loyola Chicago vs DePaul (12-20-19)
	27		Northern Iowa at Wichita State (11-09-19)
	27		Drake at Southern Illinois (01-12-20)
	27		Evansville vs Valparaiso (01-12-20)
Fouls	35		Indiana State at Western Illinois (11-14-19)
	33		Indiana State at Kansas (11-07-19)
	32		Evansville at SEMO (11-10-19)
	31		Drake at South Dakota (11-13-19)
	31		Valparaiso vs Bowling Green (11-24-19)



2019-20 Missouri Valley Conference
Conference Individual Highs
Through games of Jan 13, 2020 (All games)



INDIVIDUAL PLAYER GAME HIGHS

Points	37	Hittner,Becca (Drake) vs Northern Iowa (01-03-20)
	36	Petree, Lasha (Bradley) vs Indiana State (01-05-20)
	33	Maggett, TeTe (Illinois State) vs Western Illinois (12-04-19)
	30	Willard,Alexa (Missouri State) vs Texas A&M-CC (11-08-19)
	30	Hittner,Becca (Drake) vs Maine (11-30-19)
Field goals made	30	Petree, Lasha (Bradley) vs North Dakota State (12-05-19)
	13	Feit,Abby (Evansville) vs Brescia (11-05-19)
	13	Petree, Lasha (Bradley) vs Indiana State (01-05-20)
	12	Willard,Alexa (Missouri State) vs Texas A&M-CC (11-08-19)
	12	Willard,Alexa (Missouri State) at Oklahoma (11-14-19)
Field goal attempts	12	Maggett, TeTe (Illinois State) vs Western Illinois (12-04-19)
	23	Feit,Abby (Evansville) vs Brescia (11-05-19)
	22	Maggett, TeTe (Illinois State) vs Truman State (11-05-19)
	22	Petree, Lasha (Bradley) vs George Mason (11-29-19)
	21	Willard,Alexa (Missouri State) at Oklahoma (11-14-19)
Field goal percentage	21	Silvey,Makenzie (Southern Illinois) vs Memphis (11-20-19)
	21	Maggett, TeTe (Illinois State) vs Western Illinois (12-04-19)
	21	Petree, Lasha (Bradley) vs North Dakota State (12-05-19)
	1.000 (8-8)	Rhine,Sara (Drake) vs Northern Iowa (01-03-20)
	.917 (11-12)	Franklin,Jasmine (Missouri State) vs Kansas City (12-01-19)
3-Pt FG made	.800 (8-10)	Koenig, Tatum (Bradley) vs Jackson State (12-10-19)
	.769 (10-13)	Rhine,Sara (Drake) vs Iowa State (11-10-19)
	.750 (9-12)	Hittner,Becca (Drake) vs Maine (11-30-19)
	9	Gonzales, Janae (Loyola Chicago) at Detroit Mercy (11-05-19)
	7	Gonzales, Janae (Loyola Chicago) at Eastern Illinois (11-13-19)
3-Pt FG attempts	6	Ruffridge,Elle (Missouri State) vs Texas A&M-CC (11-08-19)
	6	Silvey,Makenzie (Southern Illinois) at SIUE (11-08-19)
	6	Rucker,Karli (Northern Iowa) at Missouri (11-13-19)
	6	Weinman, Carie (Valparaiso) at Toledo (11-27-19)
	6	Petree, Lasha (Bradley) vs North Dakota State (12-05-19)
3-Pt percentage	15	Petree, Lasha (Bradley) vs George Mason (11-29-19)
	14	Petree, Lasha (Bradley) vs North Dakota State (12-05-19)
	13	Gonzales, Janae (Loyola Chicago) at Detroit Mercy (11-05-19)
	12	Haack, Gabi (Bradley) at Michigan (11-10-19)
	12	Gonzales, Janae (Loyola Chicago) at Eastern Illinois (11-13-19)
Free throws made	12	Griffin,A'Niah (Evansville) at SIUE (11-13-19)
	12	Williams,Del'Janae (Indiana State) at UIC (11-19-19)
	12	Haack, Gabi (Bradley) vs Jackson State (12-10-19)
	.692 (9-13)	Gonzales, Janae (Loyola Chicago) at Detroit Mercy (11-05-19)
	18	Hittner,Becca (Drake) vs Northern Iowa (01-03-20)
Free throw attempts	13	Frederick, Shay (Valparaiso) vs Bowling Green (11-24-19)
	12	Hittner,Becca (Drake) at Missouri State (01-10-20)
	11	Rice, Ellie (Loyola Chicago) at Portland (12-01-19)
	11	Calip,Brice (Missouri State) at Valparaiso (01-05-20)
	18	Hittner,Becca (Drake) vs Northern Iowa (01-03-20)
Free throw percentage	15	Rice, Ellie (Loyola Chicago) at Portland (12-01-19)
	14	Frederick, Shay (Valparaiso) vs Bowling Green (11-24-19)
	14	Calip,Brice (Missouri State) at Valparaiso (01-05-20)
	13	Feit,Abby (Evansville) vs Murray State (12-03-19)
	13	Wallen, Lexi (Illinois State) vs Indiana State (01-03-20)
	13	Hittner,Becca (Drake) at Missouri State (01-10-20)
	1.000 (18-18)	Hittner,Becca (Drake) vs Northern Iowa (01-03-20)
	1.000 (10-10)	Cavey,Kristina (Northern Iowa) at Iowa State (12-22-19)
	1.000 (8-8)	Bhinhar,Mya (Missouri State) at Oklahoma (11-14-19)
	1.000 (8-8)	Hittner,Becca (Drake) vs Western Illinois (11-24-19)

	1.000	(8-8)	Hittner,Becca (Drake) at Southern Illinois (01-12-20)
Rebounds	18		Feit,Abby (Evansville) vs Brescia (11-05-19)
	18		Brackmann, Chelsea (Bradley) vs Miami (OH) (11-23-19)
	14		O'Connor, Abby (Loyola Chicago) at Detroit Mercy (11-05-19)
	14		McChristine,Jamyra (Indiana State) at Murray State (12-07-19)
	14		Feit,Abby (Evansville) at Illinois State (01-05-20)
Assists	10		Rose,Brenni (Drake) at South Dakota (11-13-19)
	10		Verano, Violeta (Bradley) vs Eureka (11-16-19)
	9		Rose,Brenni (Drake) vs South Dakota St. (11-08-19)
	9		Maggett, TeTe (Illinois State) vs UT-Martin (11-30-19)
	9		Wallace, Tiara (Loyola Chicago) vs DePaul (12-20-19)
Steals	7		Williams,Del'Janae (Indiana State) at UIC (11-19-19)
	7		Wallace,Makayla (Evansville) vs Murray State (12-03-19)
	6		Frederick, Shay (Valparaiso) at Evansville (01-12-20)
	6		Weinman, Carie (Valparaiso) at Evansville (01-12-20)
	5		Calip,Brice (Missouri State) at Minnesota (11-05-19)
	5		Fuller,Hannah (Drake) vs Waldorf (12-05-19)
	5		Pitts, Ilysse (Valparaiso) vs UIC (12-15-19)
	5		Patrick,Brittney (Southern Illinois) at Northern Illinois (12-20-19)
	5		Frederick, Shay (Valparaiso) vs Missouri State (01-05-20)
Blocked shots	6		Echi,LeAndra (Indiana State) at UIC (11-19-19)
	6		Mertz,Mya (Drake) vs Waldorf (12-05-19)
	6		Morrison, Caitlin (Valparaiso) vs Chicago State (12-28-19)
	6		Petree, Lasha (Bradley) vs Illinois State (01-10-20)
	4		Franklin,Jasmine (Missouri State) vs Santa Clara (11-22-19)
	4		Feit,Abby (Evansville) vs Murray State (12-03-19)
	4		Franklin,Jasmine (Missouri State) vs Wichita State (12-04-19)
	4		Petree, Lasha (Bradley) vs Evansville (01-03-20)
Turnovers	8		Petree, Lasha (Bradley) vs Eureka (11-16-19)
	8		Maggett, TeTe (Illinois State) at Illinois (11-16-19)
	8		Bhinhar,Mya (Missouri State) at Gonzaga (12-20-19)
	8		Bracy, Lola (Evansville) at Bradley (01-03-20)
	7		Maggett, TeTe (Illinois State) at Marquette (11-10-19)
	7		Newman,Anna (Evansville) at SIUE (11-13-19)
	7		Maggett, TeTe (Illinois State) vs Northern Illinois (11-20-19)
	7		Wallace, Tiara (Loyola Chicago) at Kansas City (11-22-19)
	7		Petree, Lasha (Bradley) vs Miami (OH) (11-23-19)
	7		Echi,LeAndra (Indiana State) vs CSUN (11-30-19)
	7		Lola Bracy (Evansville) vs Chicago State (12-18-19)
	7		Martin,Nicole (Southern Illinois) vs Western Illinois (12-19-19)
	7		White, Nyjah (Bradley) vs Liberty (12-20-19)
	7		Wallace, Tiara (Loyola Chicago) vs Southern Illinois (01-05-20)