

2015-16 LIU BROOKLYN MEN'S BASKETBALL GAME NOTES



Media Contact: Dan Lobacz • daniel.lobacz@liu.edu • Office: 718-488-1420 • Cell: 607-237-5849

2015-16 SCHEDULE

NOVEMBER

16	at Loyola (Md.)	W, 71-68
19	MAINE	W, 84-79
22	NORTH CAROLINA CENTRAL ¹	W, 78-77
25	at Florida International	L, 72-80
29	at Dartmouth	L, 56-79

DECEMBER

3	UMASS LOWELL	W, 84-72
8	at Fordham	L, 84-89 (OT)
12	at Niagara	W, 80-79 (OT)
18	SAM HOUSTON STATE	L, 69-75
22	INCARNATE WORD ¹	W, 66-59
29	at UMass	L, 79-83

JANUARY

2	at Mount St. Mary's*	L, 63-79
4	at Central Connecticut* (MSG)	W, 76-67
7	ROBERT MORRIS*	L, 60-70
9	SAINT FRANCIS U.*	L, 65-72
14	at Wagner*	W, 71-70
16	at Bryant*	W, 79-61
21	at Fairleigh Dickinson*	L, 95-101
23	ST. FRANCIS BROOKLYN* (ESPN3)	L, 49-64
27	SACRED HEART* (MSG)	W, 92-84
30	FAIRLEIGH DICKINSON*	L, 85-88

FEBRUARY

4	MOUNT ST. MARY'S*	W, 77-74
6	at Sacred Heart*	L, 90-98
11	WAGNER*	W, 82-69
15	at St. Francis Brooklyn* (ESPNU)	1:00 p.m.
18	at Robert Morris*	7:00 p.m.
20	at Saint Francis U.*	1:00 p.m.
25	CENTRAL CONNECTICUT*	7:00 p.m.
27	BRYANT*	4:30 p.m.

MARCH

2	NEC Tournament Quarterfinals
5	NEC Tournament Semifinals
8	NEC Tournament Finals

* Northeast Conference game

All Times Eastern

Home games in **BOLD**

1 – Game played at Barclays Center (Brooklyn, N.Y.)

GAME 25: ST. FRANCIS BROOKLYN



Monday, Feb. 15 • Brooklyn, N.Y. • Pope Center • 1:00 p.m.

THE MATCHUP

LIU BROOKLYN	TEAMS	ST. FRANCIS BROOKLYN
12-12, 6-7 NEC	W-L	11-15, 7-6 NEC
75.3	PPG	65.0
76.5	Opp. PPG	66.8
-1.2	Margin	-1.8
.421	FG%	.391
.447	FG% Def.	.434
.302	3PT%	.315
.368	3PT% Def.	.342
.717	FT%	.654
37.7	RPG	36.3
38.4	Opp. RPG	36.3
-0.7	Margin	+0.0
13.3	Assists/Game	11.6
14.5	Turnovers/Game	13.7
3.1	Blocks/Game	4.8
7.9	Steals/Game	6.2

QUICK HITTERS

- The LIU Brooklyn men's basketball team will seek revenge on its arch rival St. Francis Brooklyn on Monday afternoon in Brooklyn.
- The Blackbirds will be looking to avenge a 64-49 loss to the Terriers on January 23, their lowest point total of the season.
- LIU is coming off a decisive 82-69 victory over Wagner on Thursday evening, completing a season sweep of the Seahawks.
- Junior Jerome Frink had a monster game, registering 26 points to go along with 14 rebounds, three assists, three steals and three blocked shots.
- Frink is just the fourth player in college basketball this season to score at least 25 points and put up the numbers in the other three statistical categories. The others are UNC's Brice Johnson, LSU's Ben Simmons and Gonzaga's Domantas Sabonis.
- The game also marked a milestone for the 6-7 forward, as his three-pointer with under four minutes remaining gave him 1,000 points for his collegiate career (including 587 from two years at FIU).
- Sophomore Martin Hermannsson had his string of 20-point scoring games snapped at four, but did continue his all-league level play with 17 points, 11 rebounds and five assists.
- Redshirt sophomore Nura Zanna started hot for LIU Brooklyn, scoring 11 points in the first nine minutes of the game and finished with a season-best 16 points.
- St. Francis Brooklyn is coming off a come-from-behind win over Central Connecticut, 74-67, on Thursday.
- The Terriers trailed by as many as 16 points in the first half but hit seven three-pointers in the second period to help them improve to 11-15 overall and 7-6 in NEC play.
- Yunus Hopkinson had 27 points while Antonio Jenifer added 22 points and 15 rebounds in the win.

2015-16 LIU BROOKLYN MEN'S BASKETBALL • PROBABLE STARTERS/RESERVES

No.	Name	Cl.	Pos.	Ht.	Wt.	PPG	RPG	APG	Player Notes
11	Joel Hernandez	Jr.	G	6-3	180	11.3	5.8	1.1	Career-high 27 pts., 10 rebs. at FDU; GW 3-pt. as time expired in season opener vs. Loyola
13	Nura Zanna	R-So.	F	6-7	240	6.0	5.8	0.5 stl	Career-best 14 rebs. at CCSU; Season-high 16 pts. (7-11 FG) vs. Wagner
15	Martin Hermannsson	So.	G	6-3	170	15.7	4.1	4.4	Two-time NEC Player of the Week (12/28, 2/1); First career double-double vs. Wagner
20	Aakim Saintil	Jr.	G	6-0	165	13.6	4.8 ast	1.6 stl	NEC Player of the Week (1/18); Career-high 27 pts. at Wagner; 23 pts., 11 asts. at SHU
33	Jerome Frink	Jr.	F	6-7	230	17.3	9.1	1.5 blk	Two-time NEC Player of the Week (11/23, 12/13); Scored in double figures in 19 straight gms
0	Kwe Askew	Fr.	F	6-7	205	---	---	---	Second Team All-State selection as a senior at Stamford (Conn.) HS
2	Trevon Woods	So.	G/F	6-6	200	2.5	1.9	0.3 blk	Career-high 11 pts., GW layup in OT win at Niagara; Out with ankle injury
3	Iverson Fleming	Jr.	G	6-1	160	3.9	1.5	1.3	Played in 75 games over his first two-plus seasons; Season-best 17 pts. vs. UMass Lowell
4	Trevin Woods	So.	G/F	6-6	205	4.2	3.0	0.6 stl	Career-high 20 pts. at Bryant; 6-10 3-pt. FG vs. Bulldogs; 17 pts. vs. FDU on 1/30
12	Mitchell McMullen	Fr.	G	5-8	165	---	---	---	Walk-on from Texas; Played for Samuel Clemens HS, who appeared in two Texas Final Fours
14	Mark Parisi	So.	G	5-11	165	---	---	---	Walk-on from Archbishop Molloy HS in Queens; Played in three games in '14-15
22	Raul Frias	Fr.	G	6-1	165	0.3	0.7	0.2	Third Team All-State selection in Florida; Averaged 19.1 ppg as senior at Mater Academy
23	Glenn Feidanga	Jr.	F/C	6-8	240	1.9	1.8	0.1 stl	Played in only 17 games last year due to injury; Key rebound and steal at Wagner
24	Raiquan Clark	Fr.	G/F	6-4	170	0.0	0.0	1.0	Walk-on from New Haven, Conn.; Played post-grad year at Trinity-Pawling in New York
44	Ganlandou Cisse	Fr.	F/C	6-9	215	0.6	0.1	0.0	Played two years of HS basketball at Roselle Catholic; Helped Lions to NJ State TOC title
53	Julius van Sauers	Fr.	F/G	6-8	210	2.4	1.6	0.4	Played for Netherlands U18 & U20 National teams; Out with ankle injury

2015-16 LIU BROOKLYN MEN'S BASKETBALL ROSTER

No.	Name	Pos.	Ht.	Wt.	Cl.	Hometown/Previous School
0	Kwe Askew	F	6-7	205	Fr.	Stamford, Conn./Stamford
2	Trevon Woods	G/F	6-6	200	So.	Houston, Texas/Fort Bend Austin
3	Iverson Fleming	G	6-1	160	Jr.	North Brunswick, N.J./North Brunswick
4	Trevin Woods	G/F	6-6	205	So.	Houston, Texas/Fort Bend Austin
11	Joel Hernandez	G	6-3	180	Jr.	Teaneck, N.J./Teaneck
12	Mitchell McMullen	G	5-8	165	Fr.	Schertz, Texas/Samuel Clemens
13	Nura Zanna	F	6-7	240	R-So.	Kaduna, Nigeria/Coral Springs (Fla.) Christian
14	Mark Parisi	G	5-11	165	So.	Queens, N.Y./Archbishop Molloy
15	Martin Hermannsson	G	6-3	170	So.	Reykjavik, Iceland/Reykjavik
20	Aakim Saintil	G	6-0	165	Jr.	West Orange, N.J./Williston State C.C.
22	Raul Frias	G	6-1	165	Fr.	Miami, Fla./Mater Academy
23	Glenn Feidanga	F/C	6-8	240	Jr.	Bangui, Central African Republic/The Rock School (Fla.)
24	Raiquan Clark	G	6-4	170	Fr.	New Haven, Conn./Hillhouse
33	Jerome Frink	F	6-7	230	R-Jr.	Jersey City, N.J./Florida International
44	Ganlandou Cisse	F/C	6-9	215	Fr.	Dakar, Senegal/Roselle Catholic (N.J.)
53	Julius van Sauers	F/G	6-8	210	Fr.	Amsterdam, Netherlands/Apollo Amsterdam

Head Coach: Jack Perri (Bentley '98), Fourth Year

Assistant Coaches: Kenyon Spears (First Year), Chuck Bridge (Fourth Year), Jim Mack (Second Year)

Director of Basketball Operations: Alvin Vivican (First Year)

QUICK FACTS

Founded	1926
Enrollment	8,527
Nickname.....	Blackbirds
Colors	Black and Silver
Conference.....	Northeast
Home Court	Steinberg Wellness Center
Capacity.....	2,000
Athletics Web Site	www.liuathletics.com
President	Dr. Kimberly Cline
Provost	Gale Stevens Haynes
Director of Athletics.....	Brad Cohen
Deputy AD/SWA	Margaret Alaimo
Head Athletic Trainer	Courtney Civitano

COACHING STAFF

Head Coach.....	Jack Perri
Alma Mater, Year	Bentley, 1998
Career Record	61-61 (Four seasons)
Record at LIU	41-52 (Three seasons)
Assistant Coach.....	Kenyon Spears
Assistant Coach.....	Chuck Bridge
Assistant Coach.....	Jim Mack
Dir. of Basketball Operations	Alvin Vivican
Basketball Office Phone	(718) 488-3499
Basketball Office Fax.....	(718) 488-1669

TEAM INFORMATION

2014-15 Overall Record	12-18
2014-15 NEC Record/Finish.....	8-10/8th
Starters Returning/Lost.....	3/2
Letterwinners Returning/Lost.....	8/6
Newcomers.....	8

HISTORY

First Season of Basketball.....	1928-29
All-Time Record	1204-902-2
NCAA Appearances (Last).....	6 (2013)
NIT Appearances (Last).....	10 (1998)
NIT Championships	1939, 1941

MEDIA INFORMATION

Assistant AD/Men's Basketball Contact.....	Dan Lobacz
Office Phone	(718) 488-1420
Home/Cell Phone.....	(607) 237-5849
Fax	(718) 780-3302
E-mail	daniel.lobacz@liu.edu
Assistant Director.....	Casey Snedecor
Media Relations Assistants.....	Taylor Duncan, Jamie Froning
Website	www.liuathletics.com

MEDIA WORKROOM: The LIU Brooklyn office of media relations and gameday media workroom is located in the southwest corner of the Steinberg Wellness Center on the second floor adjacent to the arena floor. Programs, game notes and media guides are available in the media room and halftime and final box scores will be distributed along press row.

PRACTICE & INTERVIEW POLICY: LIU practices are open to the media IF accompanied by a member of the LIU media relations staff. Please contact Dan Lobacz to determine the status of practice and gain access for interviews. Practices generally begin at either 9:00 a.m., 12:00 p.m. or 3:00 p.m. during the week. Please make requests at least 24 hours in advance. Media are asked not to contact players or coaches directly to request interviews. All requests must be made through the media relations staff.

CREDENTIALS: Requests for media and photography credentials to cover LIU home basketball games should be e-mailed to Dan Lobacz at daniel.lobacz@liu.edu. Requests should be received at least two days prior to the game. Space is available along each baseline for photographers.

POSTGAME: The LIU locker room is closed to the media. Postgame interviews with players and coaches are conducted in the media room located adjacent to the court. Please give player and coach interview requests to Dan Lobacz or a member of the media relations staff prior to the final media timeout of the game.

2015-16 NORTHEAST CONFERENCE PRESEASON COACHES POLL

1. Mount St. Mary's (6)
 2. Robert Morris (3)
 3. Bryant (1)
 4. LIU Brooklyn
 5. St. Francis Brooklyn
 6. Wagner
 7. Sacred Heart
 8. Saint Francis U
 9. Fairleigh Dickinson
 10. Central Connecticut
- () First place votes

2015-16 NORTHEAST CONFERENCE PRESEASON ALL-CONFERENCE TEAM

Name	Cl.	Pos.	Ht.	Wt.	School
BK Ashe	Jr.	G	6-1	170	MSM
Cane Broome	So.	G	6-0	160	SHU
Dan Garvin	Jr.	F	6-6	215	BRY
Gregory Graves	Sr.	F	6-7	235	MSM
Rodney Pryor	Sr.	G	6-5	205	RMU

CONNECT WITH LIU BROOKLYN MEN'S BASKETBALL VIA SOCIAL MEDIA!



@LIUBASKETBALL



@LIUBASKETBALL

FRINK REACHES 1,000

- Junior Jerome Frink has had an immediate impact for LIU Brooklyn for the 2015-16 season, after sitting out last year following a transfer from Florida International.
- Frink has been named NEC Player of the Week twice this season, and most recently scored the honor on Dec. 14 after averaging 21.0 points and 10.0 rebounds over two games.
- The St. Anthony (N.J.) product scored a career-high 30 points against Fordham on Dec. 8 and has registered double-digit points in 14 straight contests.
- Including his two-year total at FIU, Frink has scored 1,002 points in his collegiate career after scoring 26 against Wagner on Feb. 11.
- The Jersey City, N.J., native had 587 points during his career at Florida International and is actually on pace to break 1,000 points in his LIU career if he scores at his current clip for the remainder of this season and next.
- Frink ranks third in the NEC in scoring (17.3), second in rebounding (9.1), and is among the NEC leaders in field-goal percentage (.508), steals (1.5) and blocked shots (1.5).

MARTIN ON THE MARK

- Sophomore Martin Hermannsson put together one of the top all-around performances in college basketball this season on Jan. 27 against Sacred Heart.
- The Iceland native became just the third player this season to have at least 20 points, seven rebounds, seven assists and five steals in a game.
- The other two players are former McDonald's All-American and All-America point guard Kris Dunn of Providence, and another McDonald's All-American and the consensus number one freshman in the country this season, LSU's Ben Simmons.
- Hermannsson also became the first player in college basketball since at least 2010-11 to accomplish all of those marks without committing a turnover.
- The 6-3 guard, who was named NEC Co-Player of the Week on Feb. 1 for the second time this season, finished the game with 22 points, eight rebounds, seven assists and five steals in 35 minutes.
- In his last eight outings, Hermannsson has totalled 43 assists (5.4/gm.) and is averaging 17.5 ppg over that stretch.

HERNANDEZ PUTS ON FOR HOME CROWD

- Junior Joel Hernandez had a career night against Fairleigh Dickinson on Jan. 21.
- The Teaneck, N.J., native, who was playing in front of family and friends that made the short trip to Hackensack, scored 27 points on 9-of-16 shooting while also grabbing 10 boards in 36 minutes of action.
- Hernandez registered career highs in field goals made, three-pointers made (4) and also notched his third career double-double.
- The junior forward recorded his second straight double-double with 11 points and 11 boards against St. Francis Brooklyn on Jan. 30, and has eclipsed double figures in points in each of his last seven games (15.1 ppg, 52.1 FG% over span).

TREYS FOR TREVIN

- Sophomore Trevin Woods entered the game at Bryant with just three three-pointers all year, but eclipsed that mark in the first half.
- Woods knocked down three of his four first-half trifectas in a span of 1:46 to turn a 19-19 deadlock into a nine-point LIU lead.
- The 6-6 Texan connected on another with 3:11 remaining in the period to put the score at 38-23, and hit two more in the second half for good measure.
- Woods finished with a career-high 20 points, besting his prior mark of 13 set last season at Robert Morris.
- The following game against FDU, the 6-6 wing continued his red-hot shooting with a 5-of-7 performance from beyond the arc. Woods finished the game against the Knights with 17 points, and matched that total in LIU's second matchup with FDU on Jan. 30.

WILD AND CRAZY GAMES

- LIU Brooklyn has had its fair share of exciting finishes and close games to start the 2015-16 season.
- The season opener against Loyola (Md.), the contest against North Carolina Central at Barclays Center, a road win at Niagara and most recently the win at Wagner have all gone down to the final possession.
- In addition, the game against Fordham went to overtime while the final margin for the Blackbirds against UMass and Maine was four and five points, respectively.

- Against Loyola (Md.), Jerome Frink ignited a last-second play that was highlighted on ESPN's SportsCenter, and was named the No. 1 play on the program's Top 10 Plays segment.
- In LIU's win vs. N.C. Central, Frink blocked two attempts over the final 8.7 seconds to preserve a one-point lead.
- Against Niagara, sophomore Trevon Woods hit the game-winning hoop with 2.6 seconds remaining in overtime to help the Blackbirds defeat the Purple Eagles, 80-79.
- The Wagner game featured a 17-point comeback and free-throw miscues over the final minute from both teams, with the Blackbirds sweating out two tip-in misses in the final moments en route to a 71-70 win.

GETTING TO THE LINE

- LIU Brooklyn has been very successful this season when it has gotten to the free-throw line at a high rate.
- The Blackbirds have a 11-3 record in games that they have gone to the free-throw line more than their opponent. Against Mount on Feb. 4, LIU went to the line 42 times, one shy of its season record of 43 set against N.C. Central.
- During those 14 games, LIU has attempted 431 free throws (30.8 per game) compared to its opponents 281 (20.0).
- In the other 10 contests of the season, the Blackbirds are 1-9 and have been outattempted at the charity stripe, 292-188.

AAK ATTACK!

- Junior transfer Aakim Saintil has been an instant impact addition to the LIU Brooklyn men's basketball team.
- The lightning-quick guard registered a career-high 27 points, including 20 in the second half of a 71-70 win at Wagner.
- Saintil followed that up with a 16-point performance in a victory at Bryant and was named NEC Player of the Week.
- Earlier this year, Saintil tallied 23 points and added eight assists in an overtime loss at Fordham, and had 22 points and seven assists at FDU on Jan. 21.
- Against Sacred Heart on Feb. 6, Saintil had 23 points and 11 assists in a 98-90 loss, the first double-double of his career.
- The 6-0 point guard played his first season of collegiate basketball at South Alabama, as did former Blackbird standout and 2013 NEC Tournament MVP C.J. Garner.

INTERNATIONAL MEN OF MYSTERY

- A trio of LIU Brooklyn men's basketball players saw action this summer for their respective countries.
- Junior Glenn Feidanga competed for Central African Republic in FIBA's Afrobasket Tournament in Tunisia. Feidanga played in three games for his native country, including 12 minutes against runner up Tunisia.
- Sophomore Martin Hermannsson also played for his native Iceland's National Team at the FIBA Eurobasket Tournament.
- Hermannsson played in all five games for Iceland, averaging 4.6 points, 1.8 rebounds and 1.2 assists per game while shooting 43.5 percent from the floor.
- The 6-3 guard scored six points and handed out three assists in 11 minutes off the bench in a narrow loss to Turkey.
- The final member of LIU's team to compete internationally this summer was freshman Julius van Sauers.
- van Sauers played for the Netherlands U20 National Team and had a major impact, averaging 11.1 points and 5.0 rebounds per game.
- The 6-8 forward/guard shot 50.0 percent from three-point range and 54.3 percent from the floor while averaging 24.7 minutes per game. He has missed the last two months due to injury.

BLACKBIRDS BASKETBALL HISTORY

- LIU has over 1,100 wins with 10 NIT and six NCAA Tournament appearances.
- The Blackbirds won NIT titles in 1939 and 1941.
- Clair Bee spent 18 years at LIU and owns the NCAA's highest career winning percentage (.826).
- The Blackbirds went undefeated in 1935-36 (25-0) and 1938-39 (24-0). They won 43 straight in 1935-37, the sixth-longest streak in NCAA history.
- LIU boasts nine All-Americans in its history, including the late Ossie Schectman who scored the first basket in NBA history while playing for the Knicks.
- Charles Jones won back-to-back national scoring titles in 1996-97 (30.1 ppg) and 1997-98 (29.0 ppg). Carey Scurry was the NCAA's leading rebounder in 1984-85 with 14.1 boards per game, and Jason Brickman was the national leader in assists in both 2012-13 & 2013-14.

WHY THE BLACKBIRDS?

- According to Dr. Elliott S.M. Gatner, an early historian of LIU, the first student-athletes representing the university in

intercollegiate competition in the late 1920's and early 1930's were known as the Blue Devils. The teams earned the moniker because of blue in their uniforms.

- In LIU's earliest days, the basketball players were called "Beemen," after their legendary coach, Clair F. Bee, a member of the Naismith Basketball Hall of Fame.
- Sometime between February and October of 1935, the uniform color was changed to black and the Blue Devils became the Blackbirds. A reporter for the borough's famed Brooklyn Eagle observed the players in their black uniforms running down the court dribbling the basketball, reminded him of blackbirds back home, bobbing up and down as they fed in the cornfields.
- In filing his story of the game, the writer who came to New York from the Midwest used "Blackbirds" and it has stuck ever since.

LIU BROOKLYN AT A GLANCE

- Founded in 1926, LIU Brooklyn has over 11,000 students studying in undergraduate, graduate and doctoral degree programs and certificates.
- The school awards the nationally-renowned George Polk Awards in journalism. Past winners include Studs Terkel, Walter Cronkite, Edward R. Murrow, Jim McKay, Diane Sawyer, Jimmy Breslin, David Halberstam and Christiane Amanpour.
- The Arnold & Marie Schwartz College of Pharmacy & Health Sciences is the oldest unit of LIU (1886).
- Notable alumni include: Charles M. Zegar '72, Co-Founder of Bloomberg LP; Ray Ramirez '86 Head Athletic Trainer, New York Mets; Darline Jean '93, CEO of About.com; Velma Scantlebury White '77, First African-American female transplant surgeon; Terry Semel '64, CEO of Yahoo; Danny Simmons '85, Co-Founder of Def Poetry Jam (HBO Series); Dr. Howard Murad Ph '62, Founder of Murad Skincare; Michael Gutnick, SVP of Finance, Memorial Sloan Kettering; Ian Ginsberg Ph '85, Ownder of C.O. Bigelow.

LIU AMONG NEC LEADERS

TEAM RANKINGS (THRU FEB. 12)

Scoring Offense	2nd	75.3
Scoring Defense	7th	76.5
Scoring Margin	4th	-1.2
Free Throw %	1st	.717
Field Goal %	5th	.421
Field Goal % Defense	5th	.447
3-Pt. FG %	9th	.302
3-Pt. FG % Defense	9th	.368
Rebounding Offense	2nd	37.7
Rebounding Defense	7th	38.4
Rebounding Margin	4th	-0.7
Blocked Shots Per Game	6th	3.13
Assists Per Game	2nd	13.33
Steals Per Game	3rd	7.92
Turnover Margin	4th	+0.96
Assist/TO Ratio	4th	0.92
Offensive Rebounds	3rd	12.42
Defensive Rebounds	2nd	25.29

INDIVIDUAL RANKINGS

Jerome Frink		
Scoring	3rd	17.3
Rebounding	2nd	9.1
Field Goal %	8th	.508
Steals	8th	1.46
3-Pt. FG %	14th	.361
Blocked Shots	4th	1.50
Minutes Played	7th	33.12
Martin Hermannsson		
Scoring	4th	15.7
Assists	4th	4.42
Free Throw %	2nd	.879
Steals	3rd	1.75
3-Pt. FG %	5th	.390
Assist/Turnover Ratio	2nd	1.93
Minutes Played	3rd	36.00
Joel Hernandez		
Scoring	24th	11.3
Rebounding	12th	5.8
Aakim Saintil		
Scoring	9th	13.6
Assists	2nd	4.75
Free Throw %	7th	.808
Steals	T-5th	1.63
Assist/Turnover Ratio	4th	1.61
Nura Zanna		
Rebounding	13th	5.8

THE LAST TIME...

Team Scoring

LIU scored 100+ pointsvs. Sacred Heart, 2/16/12 (103-91, W OT)
 An opponent scored 100+ points.....at Fairleigh Dickinson, 1/21/16 (101-95, L)
 LIU scored fewer than 50 points..... vs. St. Francis Brooklyn, 1/23/16 (49-64, L)
 An opponent scored fewer than 50 pointsvs. NJIT, 12/14/14 (65-49, W)
 LIU won by 20+ points.....vs. Mount St. Mary's, 3/12/13 (91-70)
 LIU won by 30+ points..... vs. Wagner, 1/15/11 (84-54)

Field Goals Made

LIU made fewer than 20 field goals vs. St. Francis Brooklyn, 1/23/16 (15)
 An opponent made fewer than 20 field goals vs. St. Francis Brooklyn, 2/26/15 (17)
 LIU shot 50% or better..... vs. Sacred Heart, 1/27/16 (.500)
 LIU shot 60% or better.....at Sam Houston State, 12/28/13 (.632)
 LIU shot below 30%..... vs. St. Francis Brooklyn, 1/23/16 (.217)

Three-Point Field Goals

LIU failed to make a three-pointervs. St. Francis Brooklyn, 1/6/90 (766 games)
 LIU made fewer than five three-pointersvs. Wagner, 2/11/16 (3)
 LIU made more than 10 three-pointers..... at Fairleigh Dickinson, 1/21/16 (11)
 LIU made more than 20 three-pointers..... at Robert Morris, 2/3/97 (21)
 LIU attempted at least 30 three-pointers vs. St. Francis Brooklyn, 1/23/16 (31)
 LIU attempted fewer than 10 three-pointersvs. Mount St. Mary's, 3/12/13 (9)
 LIU shot 50% or better on three-pointers vs. Fairleigh Dickinson, 1/30/16 (.500)

Free Throws

LIU attempted fewer than 10 free throwsat Central Connecticut, 1/15/15 (8)
 LIU attempted more than 40 free throws at Sacred Heart, 2/6/16 (42)
 LIU made fewer than five free throws..... vs. Central Connecticut, 1/29/15 (4)
 LIU shot 90% or over at the line vs. Stony Brook, 11/27/14 (.923)
 LIU shot below 50% at the linevs. Central Connecticut, 1/29/15 (.400, 4-10)

Individual Scoring

An LIU player scored 50+ pointsAntawn Dobie (53), at St. Francis (N.Y.), 2/22/03
 An LIU player scored 40+ pointsAntawn Dobie (53), at St. Francis (N.Y.), 2/22/03
 An LIU player scored 30+ pointsJerome Frink (30), at Fordham, 12/8/15
 An LIU player scored 20+ pointsJerome Frink (26), vs. Wagner, 2/11/16
 An opponent scored 30+ points.....Cane Broome (38), Sacred Heart, 1/27/16
 An opponent scored 20+ points..... Jordan Allen (20), Sacred Heart, 2/6/16

LIU had five or more double-digit scorers.....5 vs. Fairleigh Dickinson, 1/30/16
 . Trevin Woods (17), A. Saintil (12), J. Hernandez (11), J. Frink (12), M. Hermannsson (21)
 Had two players score 30+ points in same game..... vs. Quinnipiac, 3/2/13
 Jamal Olasewere (33), C.J. Garner (30)
 LIU did not have a double-digit scorervs. Wagner, 2/21/15

Assists

LIU had fewer than 10 assists vs. St. Francis Brooklyn, 1/23/16 (7)
 LIU had 25+ assists.....vs. Quinnipiac, 2/18/12 (26)
 An LIU player had 10+ assists.....Aakim Saintil, at Sacred Heart, 2/6/16 (11)
 An LIU player had 15+ assists..... Jason Brickman, vs. Quinnipiac, 2/18/12 (16)

Rebounding

LIU had fewer than 20 rebounds vs. Central Connecticut, 1/19/04 (15)
 An LIU player had 15+ rebounds.....Jerome Frink, vs. Robert Morris, 1/7/16 (15)
 An LIU player had 20+ rebounds..... Julian Boyd, at Fairleigh Dickinson, 2/23/12 (20)
 Had two players with 10+ rebounds in the same game..... vs. Wagner, 2/11/16
Jerome Frink (14), Martin Hermannsson (11)

Double-Doubles

An LIU player had a double-double (pts-rebs)..... vs. Wagner, 2/11/16
Jerome Frink (26 points, 14 rebounds); Martin Hermannsson (17 points, 11 rebounds)
 An LIU player had a double-double (points-assists)..... at Sacred Heart, 2/6/16
 Aakim Saintil (23 points, 11 assists)
 Two LIU players had a double-double in the same game vs. Wagner, 2/11/16
Jerome Frink (26 points, 14 rebounds); Martin Hermannsson (17 points, 11 rebounds)
 Three LIU players had a double-double in the same game..... 3 vs. CCSU, 2/27/14
 Hernandez (17 pts., 12 rebs.), Reed (14 pts., 10 rebs.), Brickman (12 pts., 10 assts.)

Blocks

LIU had 10+ blocks..... at Wagner, 1/14/10 (10)
 LIU did not block a shot..... vs. St. Francis Brooklyn, 1/23/16
 An LIU player had 5+ blocks E.J. Reed at Sacred Heart, 2/25/14 (5)
 An LIU player had 10+ blocksCheikh Fall, vs. Towson, 12/4/00 (10)

Steals

An LIU player had 9+ steals Dave Masciale vs. Seton Hall, 12/2/94 (9)
 An LIU player had 5+ steals Martin Hermannsson vs. Sacred Heart, 1/27/16 (5)

Turnovers

LIU had fewer than 10 turnovers at Wagner, 1/14/16 (9)
 LIU had 25+ turnovers vs. St. Francis Brooklyn, 2/26/15 (27)
 An opponent had 25+ turnovers vs. CCNY, 12/22/05 (26)

2015-16 NORTHEAST CONFERENCE STANDINGS

(As of Feb. 12)

Team	NEC	Pct.	Overall	Pct.	Streak	Home	Away	Neutral
1. Fairleigh Dickinson	9-4	.692	13-11	.542	W1	7-3	6-8	0-0
Saint Francis U.	9-4	.692	13-11	.542	W4	8-3	5-7	0-0
3. Wagner	8-5	.615	15-9	.625	L1	9-3	6-6	0-0
Mount St. Mary's	8-5	.615	11-15	.423	W1	8-2	3-12	0-1
5. St. Francis Brooklyn	7-6	.538	11-15	.423	W2	7-3	4-10	0-2
Sacred Heart	7-6	.538	8-16	.333	L1	4-3	3-13	1-0
7. LIU Brooklyn	6-7	.462	12-12	.500	W1	7-5	5-7	0-0
8. Robert Morris	5-8	.385	7-19	.269	L1	3-7	3-12	1-0
9. Bryant	4-9	.308	7-19	.269	L8	4-7	3-12	0-0
10. Central Connecticut	2-11	.154	3-21	.125	L2	2-9	1-12	0-0

UPCOMING SCHEDULE

Saturday, Feb. 13

Saint Francis U. at Mount St. Mary's - 3:00 p.m.
 Central Connecticut at Sacred Heart - 3:30 p.m.
 Wagner at Bryant - 4:00 p.m.
 Robert Morris at Fairleigh Dickinson - 6:00 p.m.

Monday, Feb. 15

LIU Brooklyn at St. Francis Brooklyn - 1:00 p.m.

Thursday, Feb. 18

LIU Brooklyn at Robert Morris - 7:00 p.m.
 Sacred Heart at Bryant - 7:00 p.m.
 St. Francis Brooklyn at Saint Francis U. - 7:00 p.m.
 Mount St. Mary's - Central Connecticut - 7:00 p.m.
 Wagner at Fairleigh Dickinson - 7:00 p.m.

Saturday, Feb. 20

Wagner at Central Connecticut - 1:00 p.m.
LIU Brooklyn at Saint Francis U. - 1:00 p.m.
 St. Francis Brooklyn at Robert Morris - 4:00 p.m.
 Mount St. Mary's at Bryant - 4:00 p.m.
 Sacred Heart at Fairleigh Dickinson - 7:00 p.m.

Thursday, Feb. 25

Robert Morris at Sacred Heart - 7:00 p.m.
 Bryant at St. Francis Brooklyn - 7:00 p.m.
 Fairleigh Dickinson at Mount St. Mary's - 7:00 p.m.
 Saint Francis U. at Wagner - 7:00 p.m.
 Central Connecticut at LIU Brooklyn 7:00 p.m.

RECORD WHEN LEADING TEAM IN SCORING

Player	Season	Record	Career	Record
Jerome Frink	11	5-6	11	5-6
Martin Hermannsson	6	2-4	12	4-8
Aakim Saintil	4	3-1	4	3-1
Joel Hernandez	3	1-2	5	1-4
Iverson Fleming	1	1-0	4	2-2
Trevin Woods	1	1-0	1	1-0
Nura Zanna	--	--	5	2-3
Glenn Feidanga	--	--	2	1-1

RECORD WHEN LEADING TEAM IN REBOUNDS

Player	Season	Record	Career	Record
Jerome Frink	16	9-7	16	9-7
Nura Zanna	6	4-2	23	10-13
Joel Hernandez	5	3-2	7	4-3
Martin Hermannsson	2	1-1	6	4-2
Glenn Feidanga	--	--	11	7-4
Trevin Woods	--	--	4	1-3

RECORD WHEN LEADING TEAM IN ASSISTS

Player	Season	Record	Career	Record
Martin Hermannsson	15	9-6	30	16-14
Aakim Saintil	11	5-6	11	5-6
Joel Hernandez	1	0-1	4	1-3
Jerome Frink	1	0-1	1	0-1
Iverson Fleming	--	--	1	1-0
Nura Zanna	--	--	1	0-1

MISCELLANEOUS

Double-Digit Scoring

Player	Season	Streak	Career
Martin Hermannsson	22	8	39
Jerome Frink	22	19	22
Aakim Saintil	16	--	16
Joel Hernandez	16	--	28
Trevin Woods	4	--	7
Nura Zanna	3	1	15
Iverson Fleming	2	--	9
Trevon Woods	1	--	1
Glenn Feidanga	--	--	2

20+ Point Games

Player	Season	Streak	Career
Jerome Frink	7	1	7
Martin Hermannsson	5	--	6
Aakim Saintil	5	--	5
Joel Hernandez	1	--	1
Trevin Woods	1	--	1
Iverson Fleming	--	--	1

30+ Point Games

Player	Season	Streak	Career
Jerome Frink	1	--	1

7+ Rebound Games

Player	Season	Streak	Career
Jerome Frink	22	11	22
Joel Hernandez	8	1	13
Nura Zanna	7	--	20
Martin Hermannsson	6	1	10
Trevin Woods	2	--	7
Glenn Feidanga	--	--	7
Iverson Fleming	--	--	1

10+ Rebound Games

Player	Season	Streak	Career
Jerome Frink	8	1	8
Nura Zanna	4	--	6
Joel Hernandez	2	--	3
Martin Hermannsson	1	1	1
Trevin Woods	1	--	1

5+ Assist Games

Player	Season	Streak	Career
Martin Hermannsson	12	1	19
Aakim Saintil	11	--	11
Iverson Fleming	1	--	1

Double-Doubles

Player	Season	Streak	Career
Jerome Frink	7	--	7
Joel Hernandez	2	--	4
Martin Hermannsson	1	1	1
Aakim Saintil	1	--	1

BLACKBIRD TRENDS

When playing at home	7-5
When playing on the road	5-7
When playing at a neutral site	0-0
When LIU scores first	9-3
When opponent scores first	3-9
When LIU wins the opening tip	8-5
When opponent wins the opening tip	4-7
In overtime contests	1-1
When leading at the half	7-6
When trailing at the half	5-5
When tied at the half	0-1
In November	3-2
In December	3-3
In January	4-6
In February	2-1
In March	0-0
On Mondays	2-0
On Tuesdays	1-2
On Wednesdays	1-1
On Thursdays	5-2
On Fridays	0-1
On Saturdays	2-5
On Sundays	1-1
In games decided by 5 points or less	6-3
In games decided by 6-10 points	3-6
In games decided by 11-15 points	2-1
In games decided by 16 points or more	1-2
Leading with 5:00 remaining	9-0
Tied with 5:00 remaining	1-1
Trailing with 5:00 remaining	2-11
Shooting 40% or better from the field	9-8
Shooting less than 40% from the field	3-4
When opponents shoot 40% or better from the field	8-11
When opponents shoot less than 40% from the field	4-1
Shooting 40% or better from three-point range	2-3
Shooting less than 40% from three-point range	10-9
When opponents shoot 40% or better from three-point range	4-7
When opponents shoot less than 40% from three-point range	8-5
Outrebounding opponent	5-3
Opponent outrebounds LIU	7-7
Rebounding is equal	0-2
Committing fewer turnovers than opponent	10-6
Committing more turnovers than opponent	2-6
Turnovers are equal	0-0
Attempting more free throws than opponent	11-3
Attempting fewer free throws than opponent	1-9
Free throw attempts are equal	0-0
Scoring 80+ points	5-4
Scoring 70-79 points	6-2
Scoring 60-69 points	1-4
Scoring under 60 points	0-2
Opponent scores 80+ points	1-5
Opponent scores 70-79 points	6-6
Opponent scores 60-69	4-1
Opponents are held under 60 points	1-0
Five or more players score in double-figures	3-2
Four players score in double-figures	4-2
Three players score in double-figures	4-7

Starting Lineups

Frink, Hermannsson, Hernandez, Saintil, Zanna	7-9
Fleming, Frink, Hermannsson, Hernandez, Zanna	4-2
Fleming, Frink, Hermannsson, Saintil, Zanna	1-0
Fleming, Frink, Hermannsson, Hernandez, Saintil	0-1



HEAD COACH JACK PERRI

Fourth Season at LIU Brooklyn • Bentley '98

Jack Perri returns for his fourth season as head men's basketball coach at LIU Brooklyn in 2015-16. Perri, who helped the Blackbirds make history in his first season as head coach, took over as head man in April 2012 after spending seven seasons as an assistant coach at the downtown Brooklyn campus.

In his first season at the helm, Perri guided the Blackbirds to an unprecedented third straight Northeast Conference Tournament title in 2013 and became just the second recipient of the Joe B. Hall National Coach of the Year award, handed out annually to the top first-year head coach at the NCAA Division I level.

In 2012-13, Perri led the Blackbirds to their third consecutive 20-win season and another trip to the NCAA Tournament. The three-straight years of 20 victories marked the first time the LIU program had accomplished the feat since 1981-84.

Sixteen of the 20 triumphs came following the loss of 2012 Northeast Conference Player of the Year Julian Boyd to a season-ending injury just eight games into the year. Perri restructured the high-powered LIU offense following the

midseason loss and boosted the unit into the top five nationally in scoring (fifth at 79.5 ppg). The Blackbirds registered 90 or more points on eight times during the season, and failed to hit the 70-point plateau just three times.

The Manalapan, N.J. native mentored the 2012-13 NEC Player of the Year Jamal Olasewere to career highs in scoring and rebounding, as well as junior point guard Jason Brickman to a LIU single-season record in assists. Brickman led all NCAA Division I players in assists per game (8.5).

His second season was undercut by a slew of injuries that limited the team to just eight available scholarship players at times, but did include a near-upset victory over defending Big Ten champion Indiana at Assembly Hall. LIU Brooklyn led for much of the game and had a pair of shots to take the lead in the closing moments but fell just short.

Playing in a friendly offense designed by Perri that utilizes ball screens and ball movement, Brickman once again led the nation in assists at a remarkable 10.0 per game, becoming just the second player in NCAA history to average double-figures in the category for an entire season.

Since joining the Blackbirds, Perri has helped the team steadily move up the ladder in the NEC. With Perri serving as associate head coach in 2011-12, LIU went 25-9 this season en route to a second appearance in the NCAA Tournament Second Round.

The Blackbirds matched their 16-2 league mark from the year before to set an NEC record for two-year conference winning percentage (32-4, .889) and won at least 25 games in back-to-back seasons for the first time since 1941-42.

The Blackbirds ranked second in the country in scoring (81.4 ppg) and compiled the nation's second-longest active home winning streak at 27 games. Junior Julian Boyd became the fourth player in LIU history to be named NEC Player of the Year and was joined on the all-conference teams by junior Jamal Olasewere and sophomore Jason Brickman.

The 2010-11 season saw LIU compile a 27-6 record and an appearance in the NCAA Tournament for the first time since 1997. The Blackbirds recorded their most overall wins since the 1936-37 team coached by Hall of Famer Clair Bee and set a program-record with a 16-2 mark in the NEC.

The team ranked fourth in the nation in scoring (82.7 ppg) and set a program record for conference wins (16). The Blackbirds also led the nation in road wins (13), entered the NCAA Tournament with a country's best 13 straight wins. LIU's 13-win improvement over the previous season was also the best in the nation.

In his time at LIU, Perri has seen 10 players earn All-NEC honors, including Boyd, who was named conference player of the year in 2011-12 after earning rookie of the year accolades in 2008-09. For his efforts, Perri was tabbed as the top assistant in the NEC by Jeff Goodman's FoxSports.com blog prior to the 2010-11 season.

Before joining Jim Ferry's staff at LIU, Perri served as the head men's basketball coach at Division III Rhode Island College in 2004-05. In his lone season at Rhode Island College, Perri took the Anchoermen to the final of the Eastern College Athletic Conference Tournament after posting a 20-9 record. Under Perri's direction, Rhode Island College captured the program's first Little East Conference co-regular season championship and he was named the league's coach of the year in his first season at the helm.

Following his graduation from Bentley College, the Manalapan, N.J., native moved to the sidelines as the top assistant coach at his alma mater. As the top assistant from 1998 to 2004, he was responsible for all aspects of recruiting and helped build a squad that went on to earn the No. 1 national ranking in 2004-05 and a No. 2 ranking in 2006-07. During his time on the staff with the Falcons, he helped the team return to the NCAA Tournament for the first time in eight seasons in 2002.

A 1998 graduate of Bentley, Perri was a two-year captain and helped the Falcons post four winning seasons while playing in 99 career games. He was recruited to Bentley by Ferry, whom he subsequently replaced as assistant coach upon his graduation.

Perri and his wife, Julie, currently reside in Manalapan, N.J., with their three children, Sean Patrick, Jackson Richard, and Charlotte Taylor.

THE PERRI FILE

1998-99	Bentley	Assistant Coach
1999-00	Bentley	Assistant Coach
2000-01	Bentley	Assistant Coach
2001-02	Bentley	Assistant Coach
2002-03	Bentley	Assistant Coach
2003-04	Bentley	Assistant Coach
2004-05	Rhode Island Col. ^{1,2}	20-9	10-4 Little East
2005-06	LIU Brooklyn	Assistant Coach
2006-07	LIU Brooklyn	Assistant Coach
2007-08	LIU Brooklyn	Associate Head Coach
2008-09	LIU Brooklyn	Associate Head Coach
2009-10	LIU Brooklyn	Associate Head Coach
2010-11	LIU Brooklyn ^{3,4,5}	Associate Head Coach
2011-12	LIU Brooklyn ^{3,4,5}	Associate Head Coach
2012-13	LIU Brooklyn ^{4,5,6}	20-14	12-6 NEC
2013-14	LIU Brooklyn	9-20	4-12 NEC
2014-15	LIU Brooklyn	12-18	8-10 NEC
2015-16	LIU Brooklyn	12-12	6-7 NEC
Totals (4+ seasons)			73-73
			40-39

- 1 Little East Conference Champions
- 2 Little East Coach of the Year
- 3 Northeast Conference Regular Season Champions
- 4 Northeast Conference Tournament Champions
- 5 NCAA Tournament Appearance
- 6 Joe B. Hall National Coach of the Year

2015-16 LIU BROOKLYN MEN'S BASKETBALL TV/RADIO ROSTER



#0 KWE ASKEW
Freshman • Forward
6-7 • 205
Stamford, Conn.



#2 TREVON WOODS
Sophomore • Guard/Forward
6-6 • 200
Houston, Texas



#3 IVERSON FLEMING
Junior • Guard
6-1 • 160
North Brunswick, N.J.



#4 TREVIN WOODS
Sophomore • Guard/Forward
6-6 • 205
Houston, Texas



#11 JOEL HERNANDEZ
Junior • Guard
6-3 • 180
Teaneck, N.J.



#12 MITCHELL MCMULLEN
Freshman • Guard
5-8 • 165
Schertz, Texas



#13 NURA ZANNA
R-Sophomore • Forward
6-7 • 240
Kaduna, Nigeria



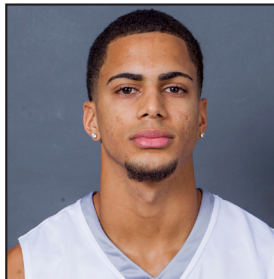
#14 MARK PARISI
Sophomore • Guard
5-11 • 165
Queens, N.Y.



#15 MARTIN HERMANNSSON
Sophomore • Guard
6-3 • 170
Reykjavik, Iceland



#20 AAKIM SAINTIL
Junior • Guard
6-0 • 165
West Orange, N.J.



#22 RAUL FRIAS
Freshman • Guard
6-1 • 165
Miami, Fla.



#23 GLENN FEIDANGA
Junior • Forward/Center
6-8 • 240
Bangui, Central African Republic



#24 RAIQUAN CLARK
Freshman • Guard
6-4 • 170
New Haven, Conn.



#33 JEROME FRINK
R-Junior • Forward
6-7 • 230
Jersey City, N.J.



#44 GANLANDOU CISSE
Freshman • Forward/Center
6-9 • 215
Dakar, Senegal



#53 JULIUS VAN SAUERS
Freshman • Forward/Guard
6-8 • 210
Amsterdam, Netherlands



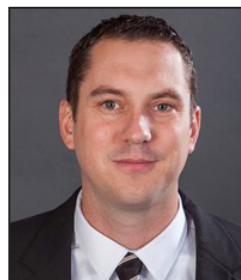
JACK PERRI
Head Coach



KENYON SPEARS
Assistant Coach



CHUCK BRIDGE
Assistant Coach



JIM MACK
Assistant Coach



ALVIN VIVICAN
Director of Basketball Ops.

2015-16 LIU BROOKLYN MEN'S BASKETBALL SEASON STATISTICS

RECORD:	OVERALL	HOME	AWAY	NEUTRAL
ALL GAMES	12-12	7-5	5-7	0-0
CONFERENCE	6-7	3-4	3-3	0-0
NON-CONFERENCE	6-5	4-1	2-4	0-0

#	Player	gp-gs	min	avg	Total		3-Point		F-Throw		Rebounds			pf	dq	a	to	blk	stl	pts	avg			
					fg-fga	fg%	3fg-fga	3fg%	ft-fa	ft%	off	def	tot											
33	FRINK, Jerome	24-24	795	33.1	160-315	.508	26-72	.361	69-106	.651	77	141	218	9.1	75	2	29	69	36	36	415	17.3		
15	HERMANSSON, Mart	24-24	864	36.0	112-250	.448	30-77	.390	123-140	.879	20	80	100	4.2	55	1	106	55	7	42	377	15.7		
20	SAINTIL, Aakim	24-18	714	29.8	90-241	.373	28-106	.264	118-146	.808	10	45	55	2.3	82	3	114	71	1	39	326	13.6		
11	HERNANDEZ, Joel	24-23	720	30.0	100-230	.435	19-60	.317	53-86	.616	40	100	140	5.8	60	3	26	40	6	19	272	11.3		
13	ZANNA, Nura	24-23	472	19.7	52-108	.481	0-0	.000	39-70	.557	60	79	139	5.8	79	4	6	43	5	13	143	6.0		
04	WOODS, Trevin	22-0	345	15.7	30-91	.330	20-67	.299	13-19	.684	20	46	66	3.0	46	1	4	15	8	13	93	4.2		
03	FLEMING, Iverson	20-8	409	20.5	29-98	.296	9-41	.220	10-18	.556	6	24	30	1.5	32	0	25	20	3	19	77	3.9		
05	WOODS, Trevon	15-0	180	12.0	14-53	.264	9-38	.237	1-5	.200	12	17	29	1.9	31	0	3	10	5	4	38	2.5		
53	van SAUERS, Julius	5-0	55	11.0	3-12	.250	2-8	.250	4-4	1.000	3	5	8	1.6	2	0	2	5	1	1	12	2.4		
23	FEIDANGA, Glenn	22-0	195	8.9	14-32	.438	0-1	.000	14-25	.560	15	24	39	1.8	49	1	2	11	1	1	42	1.9		
44	CISSE, Ganlandou	7-0	12	1.7	2-2	1.000	0-0	.000	0-0	.000	0	1	1	0.1	2	0	0	0	0	0	4	0.6		
22	FRIAS, Raul	16-0	85	5.3	3-16	.188	2-10	.200	0-0	.000	5	6	11	0.7	10	0	3	6	2	3	8	0.5		
24	CLARK, Raiquan	1-0	2	2.0	0-0	.000	0-0	.000	0-0	.000	0	0	0	0.0	0	0	1	0	0	0	0	0.0		
Team											30	39	69											
Total.....		24	4848		609-1448	.421	145-480	.302	444-619	.717	298	607	905	37.7	523	15	321	348	75	190	1807	75.3		
Opponents.....		24	4850		638-1427	.447	161-438	.368	400-573	.698	283	639	922	38.4	542	-	349	371	77	149	1837	76.5		

TEAM STATISTICS

	LIU	OPP
SCORING	1807	1837
Points per game	75.3	76.5
Scoring margin	-1.2	-
FIELD GOALS-ATT	609-1448	638-1427
Field goal pct	.421	.447
3 POINT FG-ATT	145-480	161-438
3-point FG pct	.302	.368
3-pt FG made per game	6.0	6.7
FREE THROWS-ATT	444-619	400-573
Free throw pct	.717	.698
F-Throws made per game	18.5	16.7
REBOUNDS	905	922
Rebounds per game	37.7	38.4
Rebounding margin	-0.7	-
ASSISTS	321	349
Assists per game	13.4	14.5
TURNOVERS	348	371
Turnovers per game	14.5	15.5
Turnover margin	+1.0	-
Assist/turnover ratio	0.9	0.9
STEALS	190	149
Steals per game	7.9	6.2
BLOCKS	75	77
Blocks per game	3.1	3.2
ATTENDANCE	13518	13628
Home games-Avg/Game	12-1126	12-1136
Neutral site-Avg/Game	-	0-0

Date	Opponent		Score	Att.
11/16/15	at Loyola Maryland	W	71-68	512
11/19/15	UNIVERSITY OF MAINE	W	84-79	1345
11/22/15	N.C. CENTRAL	W	78-77	1274
11/25/15	at FIU	L	72-80	869
11/29/15	at Dartmouth	L	56-79	777
12/03/15	UMASS LOWELL	W	84-72	1114
12/08/15	at Fordham	Lot	84-89	1595
12/12/15	at Niagara University	Wot	80-79	1077
12/18/15	SAM HOUSTON STATE	L	69-75	1231
12/22/15	INCARNATE WORD	W	66-59	791
12/29/15	at Massachusetts	L	79-83	3019
* 01/02/16	at Mount St. Mary's	L	63-79	2315
* 01/04/16	at Central Connecticut	W	76-67	1067
* 01/07/16	ROBERT MORRIS	L	60-70	1003
* 01/09/16	SAINT FRANCIS U.	L	65-72	1174
* 01/14/16	at WAGNER	W	71-70	1304
* 01/16/16	at Bryant	W	79-61	82
* 01/21/16	at Fairleigh Dickinson	L	95-101	379
* 01/23/16	ST. FRANCIS BROOKLYN	L	49-64	417
* 01/27/16	SACRED HEART	W	92-84	1176
* 01/30/16	FAIRLEIGH DICKINSON	L	85-88	1375
* 02/04/16	MOUNT ST. MARY'S	W	77-74	1143
* 02/06/16	at Sacred Heart	L	90-98	632
* 02/11/16	WAGNER	W	82-69	1475

* - Conference game

Score by Periods	1st	2nd	OT	Totals
LIU Brooklyn	827	958	22	1807
Opponents	814	997	26	1837

2015-16 LIU BROOKLYN MEN'S BASKETBALL CONFERENCE ONLY STATISTICS

RECORD:	OVERALL	HOME	AWAY	NEUTRAL
ALL GAMES	6-7	3-4	3-3	0-0
CONFERENCE	6-7	3-4	3-3	0-0
NON-CONFERENCE	0-0	0-0	0-0	0-0

#	Player	gp-gs	min	avg	Total		3-Point		F-Throw		Rebounds				pf	dq	a	to	blk	stl	pts	avg
					fg-fga	fg%	3fg-fga	3fg%	ft-fta	ft%	off	def	tot	avg								
33	FRINK, Jerome	13-13	447	34.4	89-183	.486	15-42	.357	38-58	.655	38	80	118	9.1	37	1	19	36	19	21	231	17.8
15	HERMANSSON, Mart	13-13	471	36.2	60-131	.458	16-41	.390	74-82	.902	12	47	59	4.5	34	1	64	30	3	25	210	16.2
20	SAINTIL, Aakim	13-13	413	31.8	50-138	.362	11-53	.208	61-76	.803	6	22	28	2.2	38	1	61	36	0	16	172	13.2
11	HERNANDEZ, Joel	13-13	421	32.4	59-134	.440	10-37	.270	38-53	.717	21	58	79	6.1	31	2	14	25	3	10	166	12.8
04	WOODS, Trevin	13-0	245	18.8	26-69	.377	19-51	.373	11-15	.733	15	33	48	3.7	31	1	2	11	6	9	82	6.3
13	ZANNA, Nura	13-13	234	18.0	28-56	.500	0-0	.000	17-37	.459	35	36	71	5.5	42	2	2	20	2	8	73	5.6
03	FLEMING, Iverson	9-0	136	15.1	6-22	.273	2-7	.286	6-10	.600	1	7	8	0.9	11	0	8	9	1	9	20	2.2
23	FEIDANGA, Glenn	13-0	130	10.0	7-18	.389	0-1	.000	11-18	.611	11	17	28	2.2	36	1	1	11	1	1	25	1.9
22	FRIAS, Raul	10-0	60	6.0	2-11	.182	1-6	.167	0-0	.000	4	3	7	0.7	6	0	2	3	1	3	5	0.5
44	CISSE, Ganlandou	3-0	3	1.0	0-0	.000	0-0	.000	0-0	.000	0	0	0	0.0	1	0	0	0	0	0	0	0.0
02	WOODS, Trevon	4-0	38	9.5	0-10	.000	0-7	.000	0-0	.000	1	1	2	0.5	3	0	1	2	1	2	0	0.0
Team											15	19	34					3				
Total.....		13	2598		327-772	.424	74-245	.302	256-349	.734	159	323	482	37.1	270	9	174	186	37	104	984	75.7
Opponents.....		13	2600		350-787	.445	96-257	.374	201-282	.713	160	338	498	38.3	290	-	190	196	39	80	997	76.7

TEAM STATISTICS

	LIU	OPP	Date	Opponent	Score	Att.
SCORING	984	997	* 01/02/16	at Mount St. Mary's	L 63-79	2315
Points per game	75.7	76.7	* 01/04/16	at Central Connecticut	W 76-67	1067
Scoring margin	-1.0	-	* 01/07/16	ROBERT MORRIS	L 60-70	1003
FIELD GOALS-ATT	327-772	350-787	* 01/09/16	SAINT FRANCIS U.	L 65-72	1174
Field goal pct	.424	.445	* 01/14/16	at WAGNER	W 71-70	1304
3 POINT FG-ATT	74-245	96-257	* 01/16/16	at Bryant	W 79-61	82
3-point FG pct	.302	.374	* 01/21/16	at Fairleigh Dickinson	L 95-101	379
3-pt FG made per game	5.7	7.4	* 01/23/16	ST. FRANCIS BROOKLYN	L 49-64	417
FREE THROWS-ATT	256-349	201-282	* 01/27/16	SACRED HEART	W 92-84	1176
Free throw pct	.734	.713	* 01/30/16	FAIRLEIGH DICKINSON	L 85-88	1375
F-Throws made per game	19.7	15.5	* 02/04/16	MOUNT ST. MARY'S	W 77-74	1143
REBOUNDS	482	498	* 02/06/16	at Sacred Heart	L 90-98	632
Rebounds per game	37.1	38.3	* 02/11/16	WAGNER	W 82-69	1475
Rebounding margin	-1.2	-				
ASSISTS	174	190				
Assists per game	13.4	14.6	* - Conference game			
TURNOVERS	186	196				
Turnovers per game	14.3	15.1				
Turnover margin	+0.8	-				
Assist/turnover ratio	0.9	1.0				
STEALS	104	80				
Steals per game	8.0	6.2				
BLOCKS	37	39				
Blocks per game	2.8	3.0				
ATTENDANCE	7763	5779				
Home games-Avg/Game	7-1109	6-963				
Neutral site-Avg/Game	-	0-0				

Score by Periods	1st	2nd	Totals
LIU Brooklyn	466	518	984
Opponents	444	553	997

GAME 25 • ST. FRANCIS BROOKLYN • MONDAY, FEB. 15 • POPE CENTER • 1:00 P.M.

GAME 1 • LOYOLA (MD) • NOV. 16, 2015

LIU Brooklyn 71 • 1-0

#	Player	Total			3-Ptr			Rebounds			PF	TP	A	TO	Blk	Stl	Min
		FG-FGA	FG-FGA	FT-FTA	FG-FGA	FG-FGA	FT-FTA	Off	Def	Tot							
13	ZANNA, Nura	1	2-4	0-0	2-4	4	4	8	5	6	0	3	2	1	20		
33	FRINK, Jerome	1	4-12	0-2	0-0	3	4	7	4	8	1	1	3	0	23		
02	FLEMING, Iverson	g	2-6	1-3	2-2	0	0	0	2	7	0	1	0	1	26		
11	HERNANDEZ, Joel	g	6-16	1-4	2-4	3	6	9	0	15	1	1	0	0	30		
15	HERMANNSSON, Martin	g	5-10	2-6	2-2	3	2	5	2	14	7	3	0	2	34		
05	WOODS, Trevon	g	0-1	0-1	0-0	2	1	3	3	0	0	0	0	0	10		
20	SAINTIL, Aakim	g	5-10	1-3	4-4	1	2	3	4	15	3	1	1	3	25		
23	FEIDANGA, Glenn	g	0-1	0-0	0-0	0	2	2	2	0	1	0	0	0	15		
53	van SAUERS, Julius	g	2-4	2-3	0-0	1	1	2	0	6	1	3	0	0	17		
Team						0	1	1									
Totals			26-64	7-22	12-16	17	23	40	22	71	14	13	6	7	200		

FG % 1st Half: 12-36 33.3% 2nd half: 14-28 50.0% Game: 26-64 40.6% Deadball Rebounds 2.2
 3FG % 1st Half: 3-13 23.1% 2nd half: 4-9 44.4% Game: 7-22 31.8%
 FT % 1st Half: 4-6 66.7% 2nd half: 8-10 80.0% Game: 12-16 75.0%

Loyola Maryland 68 • 0-2

#	Player	Total			3-Ptr			Rebounds			PF	TP	A	TO	Blk	Stl	Min
		FG-FGA	FG-FGA	FT-FTA	FG-FGA	FG-FGA	FT-FTA	Off	Def	Tot							
13	Rassman, Franz	1	4-5	0-0	4-6	1	1	2	2	12	0	1	1	0	26		
21	Jones, Jarred	1	8-15	0-0	2-2	4	10	14	2	18	1	3	1	1	30		
02	Walker, Andre	g	3-11	0-3	6-9	1	2	3	4	12	7	5	0	2	37		
05	Laster, Eric	g	3-9	0-3	2-4	3	3	6	1	8	3	2	0	1	24		
23	Hubbard, Tyler	g	3-8	3-7	0-0	0	1	1	3	9	1	0	0	0	33		
04	Provo, Nevell	g	0-0	0-0	0-0	0	0	0	0	0	0	0	0	0	5		
20	Staubli, Matt	g	1-1	0-0	0-0	0	0	0	0	2	0	0	0	0	5		
22	Gregory, Cam	g	3-3	0-0	0-0	2	0	2	2	6	0	1	0	1	14		
25	Fives, James	g	0-1	0-1	1-2	0	2	2	3	1	1	0	0	0	15		
35	Barnard, Chancellor	g	0-2	0-0	0-0	0	2	2	1	0	0	2	0	0	11		
Team						0	1	1									
Totals			25-55	3-14	15-23	11	22	33	18	68	13	14	2	5	200		

FG % 1st Half: 11-25 44.0% 2nd half: 14-30 46.7% Game: 25-55 45.5% Deadball Rebounds 2.1
 3FG % 1st Half: 1-6 16.7% 2nd half: 2-8 25.0% Game: 3-14 21.4%
 FT % 1st Half: 6-10 60.0% 2nd half: 9-13 69.2% Game: 15-23 65.2%

Officials: Earl Walton, Michael Kelly, Lionel Butler
 Technical fouls: LIU Brooklyn-None, Loyola Maryland-None.
 Attendance: 512

Score by periods	1st	2nd	Total
LIU Brooklyn	31	40	71
Loyola Maryland	29	39	68

Last FG - LIU 2nd-00:01, LOYOLA 2nd-02:01.
 Largest lead - LIU by 13 2nd-10:13, LOYOLA by 5 1st-13:21.
 LIU led for 26:01. LOYOLA led for 09:57. Game was tied for 04:02.

Points	In	Off	2nd	Fast	Bench
	Paint	T/O	Chance	Break	
LIU	36	15	14	14	21
LOYOLA	43	8	11	13	9

Score tied - 6 times.
Lead changed - 7 times.

GAME 2 • MAINE • NOV. 19, 2015

University of Maine 79 • 0-2

#	Player	Total			3-Ptr			Rebounds			PF	TP	A	TO	Blk	Stl	Min
		FG-FGA	FG-FGA	FT-FTA	FG-FGA	FG-FGA	FT-FTA	Off	Def	Tot							
11	Stojijkovic, Ilija	1	1-2	0-0	0-2	1	1	2	2	2	1	3	0	2	15		
23	Vann, Issac	1	3-5	2-2	3-5	2	7	9	4	11	0	5	1	1	28		
25	Gloger, Till	1	4-11	0-0	0-0	4	1	5	2	8	0	1	0	0	26		
02	Little, Kevin	g	6-21	3-7	0-0	0	3	3	5	15	5	3	0	1	31		
55	Beal, Garet	g	3-5	0-2	3-4	1	1	2	4	9	3	1	0	0	23		
00	Harewood, Lavar	g	0-0	0-0	2-2	0	1	1	2	0	1	0	0	0	4		
01	Calixte, Aaron	g	7-9	2-3	2-3	0	1	1	3	18	1	5	0	2	28		
03	Bernstein, Ryan	g	0-1	0-0	0-0	0	0	0	0	2	0	0	0	0	4		
05	Eke, Devine	g	7-9	0-0	0-3	4	8	12	1	14	2	2	3	2	24		
31	Reid-Knight, Troy	g	0-4	0-3	0-1	1	2	3	3	0	1	2	0	1	17		
Team						0	1	1									
Totals			31-67	7-17	10-20	13	26	39	27	79	13	24	4	9	200		

FG % 1st Half: 16-32 50.0% 2nd half: 15-35 42.9% Game: 31-67 46.3% Deadball Rebounds 4
 3FG % 1st Half: 3-7 42.9% 2nd half: 4-10 40.0% Game: 7-17 41.2%
 FT % 1st Half: 6-9 66.7% 2nd half: 4-11 36.4% Game: 10-20 50.0%

LIU Brooklyn 84 • 2-0

#	Player	Total			3-Ptr			Rebounds			PF	TP	A	TO	Blk	Stl	Min
		FG-FGA	FG-FGA	FT-FTA	FG-FGA	FG-FGA	FT-FTA	Off	Def	Tot							
13	ZANNA, Nura	1	4-6	0-0	0-0	4	7	11	3	8	2	3	0	0	16		
33	FRINK, Jerome	1	9-11	1-2	6-11	3	6	9	2	25	0	3	0	1	28		
03	FLEMING, Iverson	g	2-10	1-5	0-0	0	1	1	0	5	3	0	0	1	25		
11	HERNANDEZ, Joel	g	2-7	0-2	0-0	1	1	2	3	4	2	3	0	1	25		
15	HERMANNSSON, Martin	g	7-14	0-4	9-11	1	1	2	2	23	1	2	0	2	35		
02	WOODS, Trevon	g	1-3	0-2	0-0	2	4	6	4	2	0	2	3	0	13		
20	SAINTIL, Aakim	g	4-9	1-4	3-4	1	3	4	4	12	4	7	0	4	26		
22	FRIAS, Raul	g	0-0	0-0	0-0	0	0	0	0	0	0	0	0	0	1		
23	FEIDANGA, Glenn	g	0-0	0-0	1-3	0	1	1	2	1	0	0	0	0	11		
44	CISSE, Ganlandou	g	0-0	0-0	0-0	0	0	0	0	1	0	0	0	0	1		
53	van SAUERS, Julius	g	0-3	0-1	4-4	2	2	4	1	4	1	1	1	1	19		
Team						0	3	3									
Totals			29-63	3-20	23-33	14	29	43	22	84	13	21	4	10	200		

FG % 1st Half: 14-30 46.7% 2nd half: 15-33 45.5% Game: 29-63 46.0% Deadball Rebounds 4
 3FG % 1st Half: 1-8 12.5% 2nd half: 2-12 16.7% Game: 3-20 15.0%
 FT % 1st Half: 10-15 66.7% 2nd half: 13-18 72.2% Game: 23-33 69.7%

Officials: Ed Corbett, Ed Corbett Jr., John Corso
 Technical fouls: University of Maine-None, LIU Brooklyn-None.
 Attendance: 1345

Score by periods	1st	2nd	Total
University of Maine	41	38	79
LIU Brooklyn	39	45	84

Last FG - MAINE 2nd-00:01, LIU 2nd-00:47.
 Largest lead - MAINE by 5 1st-16:41, LIU by 8 2nd-07:28.
 MAINE led for 15:34. LIU led for 22:49. Game was tied for 01:37.

Points	In	Off	2nd	Fast	Bench
	Paint	T/O	Chance	Break	
MAINE	42	23	22	7	34
LIU	42	26	18	4	19

Score tied - 4 times.
Lead changed - 18 times.

GAME 3 • N.C. CENTRAL • NOV. 22, 2015

N.C. Central 77 • 1-2

#	Player	Total			3-Ptr			Rebounds			PF	TP	A	TO	Blk	Stl	Min
		FG-FGA	FG-FGA	FT-FTA	FG-FGA	FG-FGA	FT-FTA	Off	Def	Tot							
01	COPELAND, J.	1	3-3	0-0	2-2	1	3	4	8	0	1	0	0	0	17		
02	LYNCH, A.J.	g	1-4	0-2	1-2	0	2	2	1	3	1	1	0	2	8		
12	INGRAM, J.	g	3-9	0-0	3-5	2	4	6	3	9	3	2	0	1	23		
20	FERGUSON, J.	g	4-7	0-0	3-3	0	0	0	3	11	1	0	1	1	24		
35	GRAF, D.	g	2-5	0-0	1-2	0	5	5	5	3	4	0	0	0	19		
00	HOLMES, D.	g	9-14	4-5	4-4	1	0	1	5	26	1	2	1	1	32		
03	MADISON, R.	g	1-1	1-1	0-0	0	2	2	0	3	0	0	0	0	9		
10	WIGGINS, C.J.	g	0-3	0-0	1-5	1	2	3	2	1	2	1	0	0	22		
13	HOOD, E.	g	2-3	0-0	2-2	1	1	2	4	6	0	0	0	0	8		
21	WORTHEN, J.	g	0-1	0-0	0-0	0	1	1	2	0	2	2	0	0	15		
22	BENTON, K.	g	2-3	0-1	1-2	3	4	7	3	5	2	0	1	0	18		
23	ALLEN, N.	g	0-1	0-0	0-0	0	0	0	0	0	0	0	0	0	5		
Team						3	2	5			1						
Totals			27-54	5-9	18-27	12	26	38	32	77	15	14	3	5	200		

FG % 1st Half: 15-31 48.4% 2nd half: 12-23 52.2% Game: 27-54 50.0% Deadball Rebounds 3
 3FG % 1st Half: 4-7 57.1% 2nd half: 1-2 50.0% Game: 5-9 55.6%
 FT % 1st Half: 4-6 66.7% 2nd half: 14-21 66.7% Game: 18-27 66.7%

LIU Brooklyn 78 • 3-0

#	Player	Total			3-Ptr			Rebounds			PF	TP	A	TO	Blk	Stl	Min
		FG-FGA	FG-FGA	FT-FTA	FG-FGA	FG-FGA	FT-FTA										

GAME 25 • ST. FRANCIS BROOKLYN • MONDAY, FEB. 15 • POPE CENTER • 1:00 P.M.

GAME 5 • DARTMOUTH • NOV. 29, 2015

LIU Brooklyn 56 • 3-2

#	Player	Total			3-Ptr			Rebounds			PF	TP	A	TO	Blk	Stl	Min
		FG-FGA	FG-FGA	FT-FTA	FG-FGA	FG-FGA	FT-FTA	Off	Def	Tot							
13	ZANNA, Nura	1-3	0-0	2-2	3	2	5	2	4	0	2	0	0	0	0	17	
33	FRINK, Jerome	1-3	0-1	0-0	3	2	5	4	6	0	7	2	0	0	0	23	
03	FLEMING, Iverson	6-14	2-7	0-1	2	1	3	2	14	1	2	0	1	0	1	32	
11	HERNANDEZ, Joel	0-5	0-1	0-0	1	4	5	5	0	3	1	0	0	0	17		
15	HERMANNSSON, Martin	5-9	3-3	2-2	0	6	6	1	15	3	1	2	0	0	34		
02	WOODS, Trevon	0-1	0-1	0-0	0	0	0	0	0	0	1	0	0	0	6		
04	WOODS, Trevin	0-5	0-4	0-0	1	4	5	1	0	0	1	1	0	0	24		
20	SAINTIL, Aakim	4-6	3-4	0-1	1	0	1	5	11	2	2	0	2	0	19		
22	FRIAS, Raul	0-1	0-1	0-0	1	2	3	2	0	0	1	0	0	0	11		
23	FEIDANGA, Glenn	2-3	0-0	0-0	1	0	1	1	4	0	0	0	0	0	6		
24	CLARK, Raiquan	0-0	0-0	0-0	0	0	0	0	0	1	0	0	0	0	2		
44	CISSE, Ganlandou	1-1	0-0	0-0	0	0	0	0	2	0	0	0	0	0	2		
53	van SAUERS, Julius	0-1	0-1	0-0	0	0	0	1	0	0	0	0	0	0	7		
Team					0	0	0										
Totals		22-55	8-23	4-6	13	21	34	24	56	10	18	5	3	0	200		
FG % 1st Half: 10-28		35.7%	2nd half: 12-27	44.4%	Game: 22-55		40.0%	Deadball									
3FG % 1st Half: 3-8		37.5%	2nd half: 5-15	33.3%	Game: 8-23		34.8%	Rebounds									
FT % 1st Half: 4-4		100.0%	2nd half: 0-2	0.0%	Game: 4-6		66.7%	0									

Dartmouth 79 • 1-2

#	Player	Total			3-Ptr			Rebounds			PF	TP	A	TO	Blk	Stl	Min
		FG-FGA	FG-FGA	FT-FTA	FG-FGA	FG-FGA	FT-FTA	Off	Def	Tot							
03	Boehm, Connor	1-4	1-2	2-2	7	4	11	2	11	3	1	0	0	0	0	28	
12	Boudreaux, Evan	1-3	0-0	7-9	2	5	7	2	13	2	2	0	1	0	1	29	
04	Johnson, Taylor	0-1	0-0	1-2	0	3	3	1	1	1	1	0	2	0	19		
10	Gill, Malik	1-3	0-0	0-0	0	0	0	4	2	6	1	0	0	0	18		
22	Wright, Miles	13-22	7-9	6-7	2	4	6	2	39	1	2	1	3	0	32		
00	Carpenter, Tommy	1-2	0-0	0-0	0	0	0	0	2	0	0	0	0	0	9		
01	Smith, Cameron	1-1	0-0	3-6	0	0	0	3	5	1	1	0	1	0	9		
05	Rennie, Matt	0-0	0-0	0-0	0	0	0	0	0	0	0	0	0	0	2		
14	Smith, Guillen	0-0	0-0	0-0	0	0	0	0	0	0	0	0	0	0	5		
15	Crescenzi, Kevin	0-5	0-0	0-0	3	3	6	1	0	2	1	1	1	0	28		
20	Fleming, Mike	0-1	0-1	2-2	0	1	1	1	2	0	0	0	0	0	7		
21	Dickinson, Wesley	0-0	0-0	0-2	0	0	0	0	0	0	0	0	0	0	1		
23	Payne, Quinten	0-0	0-0	0-0	0	0	0	0	0	1	0	0	0	0	2		
25	McDonnell, Brandon	1-1	0-0	0-0	0	0	0	0	2	1	1	0	1	0	7		
44	Harrison, Cole	1-2	0-0	0-0	0	2	2	0	2	0	0	0	0	0	4		
Team					1	0	1										
Totals		25-55	8-12	21-30	15	22	37	16	79	18	11	2	9	2	200		
FG % 1st Half: 11-32		34.4%	2nd half: 14-23	60.9%	Game: 25-55		45.5%	Deadball									
3FG % 1st Half: 3-6		50.0%	2nd half: 5-6	83.3%	Game: 8-12		66.7%	Rebounds									
FT % 1st Half: 5-11		45.5%	2nd half: 16-19	84.2%	Game: 21-30		70.0%	3									

Officials: Nathan Farrell, Justin Simon, Tom Curtney
 Technical fouls: LIU Brooklyn-None. Dartmouth-None.

Attendance: 777

Miles Wright tied the Leede Arena record with 39 points.

Score by periods	1st	2nd	Total
LIU Brooklyn	27	29	56
Dartmouth	30	49	79

Last FG - LIU 2nd-01:10, DART 2nd-01:29.
 Largest lead - LIU by 2 1st-19:26, DART by 23 2nd-03:43.
 LIU led for 00:52, DART led for 37:46. Game was tied for 01:22.

	In	Off	2nd	Fast	Bench
Points	21	9	8	7	17
LIU	28	20	21	6	13
DART					

Score tied - 2 times.
 Lead changed - 3 times.

GAME 7 • FORDHAM • DEC. 8, 2015

LIU Brooklyn 84 • 4-3

#	Player	Total			3-Ptr			Rebounds			PF	TP	A	TO	Blk	Stl	Min
		FG-FGA	FG-FGA	FT-FTA	FG-FGA	FG-FGA	FT-FTA	Off	Def	Tot							
33	FRINK, Jerome	1-12	1-8	3-4	2	7	9	4	30	1	5	1	1	0	41		
03	FLEMING, Iverson	2-4	0-2	0-0	0	2	2	3	4	2	1	0	1	0	20		
11	HERNANDEZ, Joel	1-3	0-0	0-0	0	1	1	3	2	1	0	1	0	1	18		
15	HERMANNSSON, Martin	5-10	1-2	4-4	0	2	3	15	5	2	0	1	1	0	43		
20	SAINTIL, Aakim	7-13	1-4	8-9	0	5	5	4	23	8	5	0	2	0	37		
02	WOODS, Trevon	3-8	3-5	0-0	1	2	3	3	9	2	0	0	1	0	25		
04	WOODS, Trevin	0-1	0-1	0-0	0	1	1	3	0	0	2	0	1	0	11		
13	ZANNA, Nura	0-1	0-0	1-2	2	8	10	4	1	0	4	1	0	0	30		
Team					0	3	3										
Totals		30-58	8-20	16-19	5	31	36	27	84	18	20	2	8	2	225		
FG % 1st Half: 11-21		52.4%	2nd half: 16-29	55.2%	OT: 3-8		37.5%	Game: 30-58		51.7%	Deadball						
3FG % 1st Half: 4-9		44.4%	2nd half: 3-7	42.9%	OT: 1-4		25.0%	Game: 8-20		40.0%	Rebounds						
FT % 1st Half: 5-7		71.4%	2nd half: 6-6	100.0%	OT: 5-6		83.3%	Game: 16-19		84.2%	1						

Fordham 89 • 7-1

#	Player	Total			3-Ptr			Rebounds			PF	TP	A	TO	Blk	Stl	Min
		FG-FGA	FG-FGA	FT-FTA	FG-FGA	FG-FGA	FT-FTA	Off	Def	Tot							
30	RHOOMES, Ryan	1-3	0-0	0-2	2	4	6	4	6	0	2	3	0	0	34		
43	SENGELDER, Chris	1-3	1-2	3-4	5	2	7	2	10	1	4	1	2	0	37		
10	SEVERE, Jon	10-15	2-3	4-5	1	2	3	26	3	26	3	1	2	0	35		
12	CHARTOUNY, Joseph	4-11	1-4	7-8	2	8	10	2	16	6	2	0	1	0	38		
23	THOMAS, Mandell	9-21	3-8	7-12	0	5	5	4	28	2	2	0	5	0	40		
03	ZARKOVIC, Nemanja	0-2	0-0	1-2	0	3	3	1	4	1	0	0	0	0	24		
21	BUNTING, Jesse	1-2	0-0	0-0	0	0	0	0	2	0	0	0	0	0	5		
33	PEKAREK, David	0-1	0-1	0-0	0	0	0	1	0	0	1	0	0	0	7		
42	CANTY, Ryan	0-0	0-0	0-0	0	0	0	1	0	0	1	0	0	0	5		
Team					1	1	2										
Totals		30-66	7-18	22-33	11	25	36	20	89	16	13	5	10	2	225		
FG % 1st Half: 10-31		32.3%	2nd half: 17-30	56.7%	OT: 3-5		60.0%	Game: 30-66		45.5%	Deadball						
3FG % 1st Half: 1-7		14.3%	2nd half: 5-10	50.0%	OT: 1-1		100.0%	Game: 7-18		38.9%	Rebounds						
FT % 1st Half: 1-6		16.7%	2nd half: 11-15	73.3%	OT: 10-12		83.3%	Game: 22-33		66.7%	5						

Officials: Tim Comer, Guy Pagano, Matt Potter

Technical fouls: LIU Brooklyn-None. Fordham-None.

Attendance: 1595

Fordham wins seventh straight

Score by periods	1st	2nd	OT	Total
LIU Brooklyn	31	41	12	84
Fordham	22	50	17	89

Last FG - LIU OT-00:26, FOR OT-02:05.
 Largest lead - LIU by 11 2nd-14:48, FOR by 10 1st-17:14.
 LIU led for 24:49, FOR led for 16:32. Game was tied for 03:39.

Score tied - 8 times.
 Lead changed - 4 times.

	In	Off	2nd	Fast	Bench
Points	32	17	5	6	10
LIU	38	19	11	8	3
FOR					

GAME 6 • UMASS LOWELL • DEC. 3, 2015

UMass Lowell 72 • 3-3

#	Player	Total			3-Ptr			Rebounds			PF	TP	A	TO	Blk	Stl	Min
		FG-FGA	FG-FGA	FT-FTA	FG-FGA	FG-FGA	FT-FTA	Off	Def	Tot							
10	THOMAS, Jahad	1-8	0-0	2-4	1	4	5	5	4	2	1	0	0	0	22		
12	GANTZ, Josh	1-6	1-4	0-0	2	2	4	4	3	1	0	0	1	0	18		
04	JONES, Ryan	5-8	0-1	0-0	0	0	0	2	10	0	1	0	0	0	22		
11	WHITE, Isaac	2-4	2-3	4-5	0	4	4	3	10	3	4	0	1	0	29		
22	HARRIS, Matt	2-6	0-1	1-1	0	1	1	1	5	0	0	0	0	0	15		
01	HAYES II, Keith																

GAME 25 • ST. FRANCIS BROOKLYN • MONDAY, FEB. 15 • POPE CENTER • 1:00 P.M.

GAME 9 • SAM HOUSTON STATE • DEC. 18, 2015

Sam Houston State 75 • 5-5

#	Player	Total			3-Ptr			Rebounds			PF	TP	A	TO	Blk	Stl	Min
		FG	FGA	FT	FTA	Off	Def	Off	Def	Tot							
24	Butler, Torry	1	3-12	0-2	2-2	4	8	12	3	8	0	0	1	0	0	26	
13	Majauskas, Aurimas	c	7-10	2-3	5-6	1	2	3	5	21	1	3	0	1	22		
03	Henderson, Dakarai	g	1-10	0-4	2-4	0	3	3	1	4	0	2	0	0	26		
11	Barnes, Jalin	g	1-5	1-4	2-2	0	3	3	3	5	1	4	0	1	27		
20	Williams, Jamal	g	5-8	0-0	5-9	3	3	6	2	15	5	3	0	0	38		
00	Almanza, Albert	g	1-3	1-3	2-2	1	1	2	3	5	0	0	0	0	21		
04	Spivey, Jovante'	g	2-7	1-3	7-9	0	5	5	4	12	2	0	0	3	22		
23	Sands, Andre	g	1-1	0-0	3-4	1	2	3	5	5	0	1	0	0	9		
33	Fortin, Marc	g	0-1	0-0	0-0	0	1	1	1	0	0	0	1	0	9		
Team						2	1	3									
Totals			21-57	5-19	28-38	12	29	41	27	75	9	14	2	5	200		

FG % 1st Half: 11-35 31.4% 2nd half: 10-22 45.5% Game: 21-57 36.8% Deadball Rebounds 4
 3FG % 1st Half: 3-11 27.3% 2nd half: 2-8 25.0% Game: 5-19 26.3%
 FT % 1st Half: 3-4 75.0% 2nd half: 25-34 73.5% Game: 28-38 73.7%

LIU Brooklyn 69 • 5-4

#	Player	Total			3-Ptr			Rebounds			PF	TP	A	TO	Blk	Stl	Min
		FG	FGA	FT	FTA	Off	Def	Off	Def	Tot							
13	ZANNA, Nura	f	3-4	0-0	3-4	1	4	5	3	9	1	2	0	1	21		
33	FRINK, Jerome	f	5-10	0-4	4-6	4	4	8	5	14	0	2	1	0	33		
11	HERNANDEZ, Joel	g	6-13	1-3	3-7	1	5	6	3	16	2	2	0	2	35		
15	HERMANNSSON, Martin	g	2-8	1-3	0-2	1	2	3	3	5	3	4	0	0	35		
20	SAINTIL, Aakim	g	4-10	3-8	5-6	0	2	2	3	16	3	5	0	2	31		
02	WOODS, Trevon	g	1-3	1-1	0-0	1	2	3	4	3	0	2	1	1	13		
03	FLEMING, Iverson	g	1-4	0-2	1-2	0	1	1	1	3	1	0	0	0	15		
04	WOODS, Trevin	g	0-3	0-3	1-2	1	5	6	3	1	1	0	1	1	13		
23	FEIDANGA, Glenn	g	0-0	0-0	0-0	0	0	0	1	0	0	0	0	0	1		
44	CISSE, Ganlandou	g	1-1	0-0	0-0	0	1	1	0	2	0	0	0	0	3		
Team						0	4	4									
Totals			23-56	6-21	17-29	9	30	39	26	69	11	17	3	7	200		

FG % 1st Half: 10-25 40.0% 2nd half: 13-31 41.9% Game: 23-56 41.1% Deadball Rebounds 7
 3FG % 1st Half: 2-8 25.0% 2nd half: 4-13 30.8% Game: 6-21 28.6%
 FT % 1st Half: 10-14 71.4% 2nd half: 7-15 46.7% Game: 17-29 58.6%

Officials: Steve Ruppenthal, John Hughes, Dennis Alocco
 Technical fouls: Sam Houston State-None. LIU Brooklyn-TEAM.
 Attendance: 1231

Score by periods	1st	2nd	Total
Sam Houston State	28	47	75
LIU Brooklyn	32	37	69

Last FG - SHSU 2nd-01:07, LIU 2nd-00:19.
 Largest lead - SHSU by 16 2nd-05:09, LIU by 6 2nd-18:45.
 SHSU led for 20:34. LIU led for 13:18. Game was tied for 06:08.

Points	In	Off	2nd	Fast	Bench
SHSU	Paint	T/O	Chance	Break	
26	18	7	4	22	
LIU	16	7	0	9	

Score tied - 9 times.
 Lead changed - 8 times.

GAME 10 • INCARNATE WORD • DEC. 22, 2015

Incarnate Word 59 • 4-6

#	Player	Total			3-Ptr			Rebounds			PF	TP	A	TO	Blk	Stl	Min
		FG	FGA	FT	FTA	Off	Def	Off	Def	Tot							
01	Green, Derail	f	6-11	2-3	2-2	1	7	8	3	16	0	2	1	1	32		
04	Hittie, Kyle	f	5-12	3-9	2-4	1	5	6	4	15	3	4	0	1	37		
00	Walker, Jontrell	g	3-10	1-5	0-1	0	3	3	5	7	0	5	0	2	18		
02	Badillo, Mitchell	g	2-5	0-0	0-2	0	1	1	4	4	6	6	0	0	33		
41	Johnson, Shawn	*	3-8	1-4	2-5	1	11	12	4	9	4	1	1	1	36		
03	Socks, Simi	g	0-0	0-0	0-1	0	1	1	3	0	0	0	1	0	7		
10	Singleton, Tyler	g	3-6	0-0	0-0	0	2	2	3	6	1	2	0	2	26		
24	Johnson, Phillip	g	0-0	0-0	0-0	0	0	0	1	0	0	0	0	0	3		
32	Kite, Jerred	g	1-3	0-0	0-0	1	1	2	0	2	0	1	0	1	8		
Team						1	3	4									
Totals			23-55	7-21	6-15	5	34	39	27	59	14	21	3	8	200		

FG % 1st Half: 9-27 33.3% 2nd half: 14-28 50.0% Game: 23-55 41.8% Deadball Rebounds 3
 3FG % 1st Half: 3-11 27.3% 2nd half: 4-10 40.0% Game: 7-21 33.3%
 FT % 1st Half: 5-9 55.6% 2nd half: 1-6 16.7% Game: 6-15 40.0%

LIU Brooklyn 66 • 6-4

#	Player	Total			3-Ptr			Rebounds			PF	TP	A	TO	Blk	Stl	Min
		FG	FGA	FT	FTA	Off	Def	Off	Def	Tot							
13	ZANNA, Nura	f	3-8	0-0	1-3	1	5	6	4	7	0	5	0	1	20		
33	FRINK, Jerome	f	6-9	1-2	1-4	3	5	8	4	14	1	2	2	4	30		
11	HERNANDEZ, Joel	g	3-5	1-1	2-7	0	7	7	3	9	1	1	1	0	29		
15	HERMANNSSON, Martin	g	4-11	1-1	9-10	0	8	8	1	18	3	3	0	2	33		
20	SAINTIL, Aakim	g	1-4	1-4	4-4	0	2	2	4	7	3	2	0	1	18		
02	WOODS, Trevon	g	2-9	1-7	1-3	0	2	2	2	6	0	0	0	0	19		
03	FLEMING, Iverson	g	1-6	0-1	1-2	0	1	1	0	3	1	0	0	3	27		
04	WOODS, Trevin	g	0-0	0-0	0-0	0	0	0	1	0	1	1	0	1	10		
22	FRIAS, Raul	g	0-2	0-1	0-0	0	0	0	1	0	2	1	0	7			
23	FEIDANGA, Glenn	g	1-1	0-0	0-0	0	0	0	2	2	0	0	0	0	4		
44	CISSE, Ganlandou	g	0-0	0-0	0-0	0	0	0	0	0	0	0	0	0	3		
Team						3	3	6									
Totals			21-55	5-17	19-33	7	33	40	22	66	10	16	4	12	200		

FG % 1st Half: 11-30 36.7% 2nd half: 10-25 40.0% Game: 21-55 38.2% Deadball Rebounds 7
 3FG % 1st Half: 1-6 16.7% 2nd half: 4-11 36.4% Game: 5-17 29.4%
 FT % 1st Half: 4-9 44.4% 2nd half: 15-24 62.5% Game: 19-33 57.6%

Officials: Chris Boehm, Ed Corbett Jr., Chris Jennings
 Technical fouls: Incarnate Word-None. LIU Brooklyn-None.
 Attendance: 791

Score by periods	1st	2nd	Total
Incarnate Word	26	33	59
LIU Brooklyn	27	39	66

Last FG - UIW 2nd-00:14, LIU 2nd-01:32.
 Largest lead - UIW by 11 1st-12:54, LIU by 11 2nd-04:37.
 UIW led for 00:46. LIU led for 38:50. Game was tied for 00:24.

Score tied - 0 times.
 Lead changed - 2 times.

GAME 11 • UMASS • DEC. 29, 2015

LIU Brooklyn 79 • 6-5

#	Player	Total			3-Ptr			Rebounds			PF	TP	A	TO	Blk	Stl	Min
		FG	FGA	FT	FTA	Off	Def	Off	Def	Tot							
13	ZANNA, Nura	f	1-2	0-0	4-5	2	3	5	2	6	0	3	0	1	22		
33	FRINK, Jerome	f	8-14	1-3	4-6	4	9	13	3	21	1	2	2	1	34		
11	HERNANDEZ, Joel	g	5-10	1-2	2-3	2	4	6	3	13	2	1	0	2	24		
15	HERMANNSSON, Martin	g	6-12	2-4	4-5	0	1	1	1	18	3	2	1	3	35		
20	SAINTIL, Aakim	g	2-12	1-7	3-4	1	0	1	4	8	6	4	0	0	28		
02	WOODS, Trevon	g	2-7	1-5	0-0	3	3	6	2	5	0	0	0	0	16		
03	FLEMING, Iverson	g	0-4	0-2	0-1	1	1	2	4	0	2	1	1	1	23		
04	WOODS, Trevin	g	2-4	0-1	0-0	0	2	2	2	4	0	0	0	0	12		
22	FRIAS, Raul	g	0-1	0-1	0-0	0	0	0	0	0	0	0	0	0	1		
23	FEIDANGA, Glenn	g	2-3	0-0	0-0	0	0	0	0	4	0	0	0	0	5		
Team						0	2	2									
Totals			28-69	6-25	17-24	13	25	38	21	79	14	13	4	8	200		

FG % 1st Half: 13-35 37.1% 2nd half: 15-34 44.1% Game: 28-69 40.6% Deadball Rebounds 3
 3FG % 1st Half: 3-14 21.4% 2nd half: 3-11 27.3% Game: 6-25 24.0%
 FT % 1st Half: 7-10 70.0% 2nd half: 10-14 71.4% Game: 17-24 70.8%

Massachusetts 83 • 7-5

#	Player	Total			3-Ptr			Rebounds			PF	TP	A	TO	Blk	Stl	Min
		FG	FGA	FT	FTA	Off	Def	Off	Def	Tot							
24	BERGER, Seth	f	2-5	0-0	0-0	2	8	10	4	4	0	0	2	0	34		
05	HOLLOWAY, Rashaan	c	0-1	0-0	1-2	0	0	0	2	1	1	1	0	0	4		
00	CLARK, Donte	g	6-16	2-6	7-9	0	6	6	2	21	6	2	0	0	37		
05	HINDS, Jabarie	g	7-15	0-3	3-4	2	2	4	2	17	1	4	0	2	35		
12	DAVIS, Trey	g	7-17	1-3	10-12	0	4	4	2	25	1	3	0	0	30		

GAME 25 • ST. FRANCIS BROOKLYN • MONDAY, FEB. 15 • POPE CENTER • 1:00 P.M.

GAME 13 • CENTRAL CONNECTICUT • JAN. 4, 2016

LIU Brooklyn 76 • 7-6, 1-1 NEC

#	Player	Total			3-Ptr			Rebounds			PF	TP	A	TO	Blk	Stl	Min
		FG-FGA	FG-FGA	FT-FTA	Off	Def	Tot	Off	Def	Tot							
11	HERNANDEZ, Joel	4-9	0-0	3-4	3	2	5	3	11	0	3	0	1	25			
13	ZANNA, Nura	2-5	0-0	2-3	3	11	14	4	6	2	0	0	0	26			
15	HERMANNSSON, Martin	5-8	1-2	6-6	0	1	1	3	17	6	2	0	3	36			
20	SAINTIL, Aakim	4-8	1-4	7-10	0	1	1	0	16	5	2	0	2	33			
33	FRINK, Jerome	9-16	1-3	0-0	1	2	3	2	19	1	1	3	3	32			
02	WOODS, Trevon	0-2	0-1	0-0	1	0	1	1	0	0	1	0	0	10			
03	FLEMING, Iverson	1-3	1-1	0-0	0	1	1	1	3	0	0	0	0	18			
04	WOODS, Trevin	1-3	0-1	2-3	1	3	4	3	4	0	2	0	0	12			
23	FEIDANGA, Glenn	0-1	0-0	0-0	1	0	1	2	0	0	0	0	0	6			
	Team				0	3	3										
	Totals	26-55	4-12	20-26	10	24	34	19	76	12	13	3	9	198			

FG % 1st Half: 13-29 44.8% 2nd half: 13-26 50.0% Game: 26-55 47.3% Deadball Rebounds 3
 3FG % 1st Half: 3-9 33.3% 2nd half: 1-3 33.3% Game: 4-12 33.3%
 FT % 1st Half: 8-9 88.9% 2nd half: 12-17 70.6% Game: 20-26 76.9%

Central Connecticut 67 • 1-12, 0-2 NEC

#	Player	Total			3-Ptr			Rebounds			PF	TP	A	TO	Blk	Stl	Min
		FG-FGA	FG-FGA	FT-FTA	Off	Def	Tot	Off	Def	Tot							
10	NEHLS, Austin	4-7	4-6	2-2	2	5	7	2	14	3	0	0	1	40			
12	CUMBERLANDER, Khale	3-14	2-7	5-8	2	4	6	4	13	5	2	0	0	39			
13	PHOENIX, Evan	3-5	0-0	0-0	2	3	5	2	6	1	3	0	0	17			
24	NAILS, Jahllil	2-2	1-1	0-1	0	0	0	4	5	0	0	0	1	13			
34	PEEL, Brandon	2-6	0-0	0-0	0	2	2	1	4	0	3	1	2	17			
01	SEYMOUR, Kevin	0-2	0-0	0-0	0	1	1	1	0	2	1	0	0	13			
03	JONES, MUSTAFA	6-14	0-0	3-4	2	0	2	2	15	0	1	1	1	26			
05	BOWLES, Eric	0-1	0-0	0-0	0	0	0	4	0	2	2	0	0	15			
11	PIERRE, Tidell	4-5	0-0	2-3	3	3	6	1	10	2	1	0	0	18			
21	TOPPIN, Malik	0-0	0-0	0-0	0	0	0	0	0	0	2	0	0	2			
	Team				2	4	6										
	Totals	24-56	7-14	12-18	13	22	35	21	67	15	16	2	5	200			

FG % 1st Half: 9-23 39.1% 2nd half: 15-33 45.5% Game: 24-56 42.9% Deadball Rebounds 1
 3FG % 1st Half: 3-6 50.0% 2nd half: 4-8 50.0% Game: 7-14 50.0%
 FT % 1st Half: 8-10 80.0% 2nd half: 4-8 50.0% Game: 12-18 66.7%

Officials: Bob Adams, David Walker, Jim Bruno
 Technical fouls: LIU Brooklyn-None. Central Connecticut-None.
 Attendance: 1067

Score by periods	1st	2nd	Total
LIU Brooklyn	37	39	76
Central Connecticut	29	38	67

	In	Off	2nd	Fast	Bench
Points	Paint	T/O	Chance	Break	
LIU	36	26	7	6	7
CCSU	26	11	9	4	25

Last FG - LIU 2nd-02:54, CCSU 2nd-00:19.
 Largest lead - LIU by 17 1st-04:30, CCSU None.
 LIU led for 39:06. CCSU led for 00:00. Game was tied for 00:42.

Score tied - 0 times.
 Lead changed - 0 times.

GAME 14 • ROBERT MORRIS • JAN. 7, 2016

Robert Morris 70 • 3-13, 1-2 NEC

#	Player	Total			3-Ptr			Rebounds			PF	TP	A	TO	Blk	Stl	Min
		FG-FGA	FG-FGA	FT-FTA	Off	Def	Tot	Off	Def	Tot							
01	STILL, Isaiah	4-9	1-4	4-6	2	3	5	3	13	1	2	0	0	31			
20	GILES, Billy	2-5	0-0	1-2	2	2	4	3	5	2	0	0	0	17			
03	STEWART, Kavon	3-11	1-3	2-7	0	4	4	2	9	6	5	0	4	36			
11	PRYOR, Rodney	7-14	2-4	5-6	2	9	11	2	21	2	4	1	1	33			
23	McCONNELL, Matty	2-6	2-6	1-2	0	1	1	1	7	1	0	1	1	30			
02	WHITLEY, Steven	0-1	0-1	0-1	0	1	1	1	0	0	0	0	1	9			
05	MINNIE, Elijah	5-7	3-4	0-0	2	6	8	4	13	1	2	0	0	25			
08	LESTER, Jordan	0-0	0-0	0-0	0	0	0	0	0	0	2	0	0	1			
33	FREDERICK, Andre	1-3	0-0	0-0	2	4	6	1	2	0	0	2	0	18			
	Team				1	2	3										
	Totals	24-56	9-22	13-24	11	32	43	17	70	13	16	4	7	200			

FG % 1st Half: 13-30 43.3% 2nd half: 11-26 42.3% Game: 24-56 42.9% Deadball Rebounds 3
 3FG % 1st Half: 4-11 36.4% 2nd half: 5-11 45.5% Game: 9-22 40.9%
 FT % 1st Half: 1-2 50.0% 2nd half: 12-22 54.5% Game: 13-24 54.2%

LIU Brooklyn 60 • 7-7, 1-2 NEC

#	Player	Total			3-Ptr			Rebounds			PF	TP	A	TO	Blk	Stl	Min
		FG-FGA	FG-FGA	FT-FTA	Off	Def	Tot	Off	Def	Tot							
13	ZANNA, Nura	2-4	0-0	2-4	2	3	5	3	6	0	2	0	0	14			
33	FRINK, Jerome	9-17	0-1	2-3	4	11	15	2	20	2	0	0	1	34			
11	HERNANDEZ, Joel	1-8	0-2	5-8	1	3	4	1	7	1	0	0	0	29			
15	HERMANNSSON, Martin	3-9	1-5	3-3	1	3	4	3	10	6	3	0	2	37			
20	SAINTIL, Aakim	2-10	1-7	0-0	0	1	1	2	5	3	7	0	4	32			
02	WOODS, Trevon	0-1	0-0	0-0	0	1	1	2	0	1	1	0	0	7			
03	FLEMING, Iverson	0-2	0-2	0-0	0	2	2	3	0	2	1	0	0	12			
04	WOODS, Trevin	4-7	2-4	0-0	1	3	4	4	10	0	0	0	2	27			
22	FRIAS, Raul	0-2	0-1	0-0	1	0	1	0	0	0	0	0	0	3			
23	FEIDANGA, Glenn	1-1	0-0	0-0	0	1	1	0	2	0	0	0	0	5			
	Team				0	1	1										
	Totals	22-61	4-22	12-18	10	29	39	20	60	15	14	0	9	200			

FG % 1st Half: 10-29 34.5% 2nd half: 12-32 37.5% Game: 22-61 36.1% Deadball Rebounds 3
 3FG % 1st Half: 1-5 20.0% 2nd half: 3-17 17.6% Game: 4-22 18.2%
 FT % 1st Half: 10-15 66.7% 2nd half: 2-3 66.7% Game: 12-18 66.7%

Officials: Paul Faia, Guy Pagano, Tom Courtney
 Technical fouls: Robert Morris-None. LIU Brooklyn-None.
 Attendance: 1003

Score by periods	1st	2nd	Total
Robert Morris	31	39	70
LIU Brooklyn	31	29	60

GAME 15 • SAINT FRANCIS U. • JAN. 9, 2016

Saint Francis U. 72 • 7-8, 3-1 NEC

#	Player	Total			3-Ptr			Rebounds			PF	TP	A	TO	Blk	Stl	Min
		FG-FGA	FG-FGA	FT-FTA	Off	Def	Tot	Off	Def	Tot							
32	Neba, Josh	3-5	0-0	1-2	2	2	4	4	7	1	1	1	0	21			
40	Drinnon, Ronnie	6-14	0-2	0-0	3	7	10	3	12	0	0	0	0	32			
11	Millaud-Meurier, Ben	4-9	3-7	2-2	0	5	5	0	13	0	0	0	0	32			
12	Brown, Greg	5-11	2-3	2-6	1	0	1	4	14	3	3	0	0	35			
24	Blackmon, Isaiah	4-8	0-1	4-4	3	3	6	2	12	2	3	0	1	33			
03	King, Jamaal	0-1	0-1	0-0	0	0	0	0	0	0	0	0	0	7			
23	Angelou, Georgios	1-1	1-1	0-0	0	1	1	0	3	0	1	0	0	13			
33	Wrencher, Patrick	0-0	0-0	0-0	0	0	0	0	0	0	0	0	0	1			
35	Thompson, Basil	2-4	0-0	7-8	4	5	9	2	11	3	4	0	2	26			
	Team				0	4	4										
	Totals	25-53	6-15	16-22	13	27	40	15	72	13	15	1	3	200			

FG % 1st Half: 14-31 45.2% 2nd half: 11-22 50.0% Game: 25-53 47.2% Deadball Rebounds 2
 3FG % 1st Half: 3-8 37.5% 2nd half: 3-7 42.9% Game: 6-15 40.0%
 FT % 1st Half: 1-4 25.0% 2nd half: 15-18 83.3% Game: 16-22 72.7%

LIU Brooklyn 65 • 7-8, 1-3 NEC

#	Player	Total			3-Ptr			Rebounds			PF	TP	A	TO	Blk	Stl	Min
		FG-FGA	FG-FGA	FT-FTA	Off	Def	Tot	Off	Def	Tot							
13	ZANNA, Nura	3-6	0-0	2-4	6	4	10	4	8	0	1	1	1	25			
33	FRINK, Jerome	6-10	2-3	4-4	1	6	7	4	18	1	2	0	1	37			
11	HERNANDEZ, Joel	6-12	1-4	0-0	2	4	6	5	13	2	4	2	1	29			
15	HERMANNSSON, Martin	5-12	3-5	4-4	1	2	3	2	17	2	0	0	3	39			
20	SAINTIL, Aakim	3-12	0-5	1-1	0	2	2	4	7	6	1	0	1	28			
02	WOODS, Trevon	0-4	0-4	0-0	0	0	0	0	0	0	0	1	2	13			
03	FLEMING, Iverson	1-4	0-1	0-0	0	1	1	0	2	1	0	0	1	16			
04	WOODS, Trevin	0-0	0-0	0-0	0	0	0	0	0	0	1	0	0	2			
22	FRIAS, Raul	0-0	0-0	0-0	0	0	0	0	0	0	1	0	0	5			
23	FEIDANGA, Glenn	0-0	0-0	0-0	0	0	0	3	0	2	0	0	0	5			
44	CISSE, Ganlandou	0-0	0-0	0-0	0	0	0	1	0	0	0	0	0	1			
	Team				0	0	0										
	Totals	24-60	6-22	11-13	10	19	29	23	65	12	12	4	10	200			

FG % 1st Half: 11-26 42.3% 2nd half: 13-34 38.2% Game: 24-60 40.0% Deadball Rebounds 1
 3FG % 1st Half: 3-9 33.3% 2nd half: 3-13 23.1% Game: 6-22 27.3%
 FT % 1st Half: 5-6 83.3% 2nd half: 6-7 85.7% Game: 11-13 84.6%

Officials: Doug Aprahamian, James Grady, Christopher Slattery
 Technical fouls: Saint Francis U.-None. LIU Brooklyn-None.
 Attendance: 1174

Score by periods	1st	2nd	Total
Saint Francis U.	32	40	72
LIU Brooklyn	30	35	65

	In	Off	2nd	Fast	Bench
Points	Paint	T/O	Chance	Break	</

GAME 25 • ST. FRANCIS BROOKLYN • MONDAY, FEB. 15 • POPE CENTER • 1:00 P.M.

GAME 17 • BRYANT • JAN. 16, 2016

LIU Brooklyn 79 • 9-8, 3-3NEC

#	Player	Total			3-Ptr			Rebounds			PF	TP	A	TO	Blk	Stl	Min
		FG-FGA	FG-FGA	FT-FTA	FG-FGA	FG-FGA	FT-FTA	Off	Def	Tot							
11	HERNANDEZ, Joel	5-9	0-2	5-6	2	5	7	1	15	1	1	0	2	34			
13	ZANNA, Nura	1-2	0-0	1-2	3	3	6	4	3	0	1	0	1	16			
15	HERMANNSSON, Martin	3-9	1-3	4-4	1	1	2	1	11	8	4	0	1	36			
20	SAINTIL, Aakim	6-10	2-5	2-2	0	4	4	3	16	4	2	0	1	30			
33	FRINK, Jerome	4-9	1-3	3-4	2	5	7	1	12	3	4	3	3	31			
04	WOODS, Trevin	6-11	6-10	2-2	0	5	5	1	20	0	1	1	1	26			
22	FRIAS, Raul	0-2	0-2	0-0	0	1	1	0	0	1	0	0	1	18			
23	FEIDANGA, Glenn	1-1	0-0	0-0	0	1	1	2	2	0	2	0	0	9			
Team					1	0	1										
Totals		26-53	10-25	17-20	9	25	34	13	79	17	15	4	10	200			

FG % 1st Half: 16-30 53.3% 2nd half: 10-23 43.5% Game: 26-53 49.1% Deadball Rebounds 1
 3FG % 1st Half: 6-13 46.2% 2nd half: 4-12 33.3% Game: 10-25 40.0%
 FT % 1st Half: 6-8 75.0% 2nd half: 11-12 91.7% Game: 17-20 85.0%

Bryant 61 • 7-12, 4-2NEC

#	Player	Total			3-Ptr			Rebounds			PF	TP	A	TO	Blk	Stl	Min
		FG-FGA	FG-FGA	FT-FTA	FG-FGA	FG-FGA	FT-FTA	Off	Def	Tot							
01	WARE, Hunter	4-16	2-5	4-5	1	2	3	3	14	1	2	0	2	38			
02	ZOUZOUA, Nisre	5-13	3-8	0-0	0	3	3	4	13	3	1	0	0	25			
04	McLAUGHLIN, Shane	1-3	1-2	2-2	0	0	0	4	5	4	6	0	3	36			
12	PETTWAY, Marcel	10-14	0-0	0-0	6	4	10	2	20	4	2	1	0	39			
20	RILEY, Gus	0-1	0-1	0-0	0	1	1	0	0	0	0	0	0	21			
03	KOSTUR, Bosko	0-1	0-0	0-0	0	0	0	0	0	0	0	0	0	1			
05	TOE, Terrill	0-0	0-0	0-0	0	0	0	0	0	0	0	0	0	1			
11	BRICKMAN, Justin	0-1	0-1	0-0	0	2	2	0	0	1	1	0	1	4			
22	GARVIN, Dan	3-11	0-0	0-0	7	3	10	4	6	2	2	2	2	20			
34	OAKLEY, Curtis	1-5	1-4	0-0	0	3	3	0	3	2	3	0	0	15			
Team					2	2	4										
Totals		24-65	7-21	6-7	16	20	36	17	61	17	17	3	8	200			

FG % 1st Half: 12-36 33.3% 2nd half: 12-29 41.4% Game: 24-65 36.9% Deadball Rebounds 1
 3FG % 1st Half: 3-10 30.0% 2nd half: 4-11 36.4% Game: 7-21 33.3%
 FT % 1st Half: 1-2 50.0% 2nd half: 5-5 100.0% Game: 6-7 85.7%

Officials: David Niven, Lee Marelli, Darren Moran
 Technical fouls: LIU Brooklyn-None. Bryant-None.
 Attendance: 82

Score by periods	1st	2nd	Total
LIU Brooklyn	44	35	79
Bryant	28	33	61

Last FG - LIU 2nd-04:33, BRY 2nd-00:28.
 Largest lead - LIU by 20 2nd-03:35, BRY by 1 1st-14:11.
 LIU led for 35:00, BRY led for 01:00. Game was tied for 04:00.

	In	Off	2nd	Fast	Bench
Points	Paint	T/O	Chance	Break	
LIU	24	19	14	0	22
BRY	30	13	12	6	9

Score tied - 6 times.
 Lead changed - 2 times.

GAME 18 • FAIRLEIGH DICKINSON • JAN. 21, 2016

LIU Brooklyn 95 • 9-9, 3-4 NEC

#	Player	Total			3-Ptr			Rebounds			PF	TP	A	TO	Blk	Stl	Min
		FG-FGA	FG-FGA	FT-FTA	FG-FGA	FG-FGA	FT-FTA	Off	Def	Tot							
11	HERNANDEZ, Joel	9-16	4-7	5-5	4	6	10	3	27	1	3	0	1	36			
13	ZANNA, Nura	0-1	0-0	0-0	2	1	3	2	0	1	1	0	0	13			
15	HERMANNSSON, Martin	3-6	0-2	6-6	0	4	4	4	12	8	4	0	2	38			
20	SAINTIL, Aakim	8-13	2-5	4-6	0	2	2	2	22	7	5	0	2	35			
33	FRINK, Jerome	7-17	0-2	3-5	4	3	7	4	17	1	5	0	0	31			
04	WOODS, Trevin	5-9	5-7	2-2	2	2	4	3	17	0	0	0	0	29			
22	FRIAS, Raul	0-0	0-0	0-0	0	0	0	2	0	0	1	0	0	6			
23	FEIDANGA, Glenn	0-0	0-0	0-0	0	0	0	2	0	0	0	0	0	12			
Team					0	0	0										
Totals		32-62	11-23	20-24	12	18	30	22	95	18	19	0	5	200			

FG % 1st Half: 17-34 50.0% 2nd half: 15-28 53.6% Game: 32-62 51.6% Deadball Rebounds 1
 3FG % 1st Half: 8-14 57.1% 2nd half: 3-9 33.3% Game: 11-23 47.8%
 FT % 1st Half: 9-11 81.8% 2nd half: 11-13 84.6% Game: 20-24 83.3%

Fairleigh Dickinson 101 • 9-9, 5-2 NEC

#	Player	Total			3-Ptr			Rebounds			PF	TP	A	TO	Blk	Stl	Min
		FG-FGA	FG-FGA	FT-FTA	FG-FGA	FG-FGA	FT-FTA	Off	Def	Tot							
01	JIGGETTS, Stephan	5-8	0-2	10-11	3	3	6	2	20	4	1	0	2	34			
02	ANDERSON, Darian	9-20	3-8	11-12	2	7	9	2	32	0	3	1	5	35			
05	POTTS Jr, Earl	1-3	0-1	0-0	1	1	2	4	2	1	1	0	1	16			
15	TOWNES, Marques	7-10	1-3	0-0	1	2	3	1	15	3	4	0	1	32			
44	HOLLOWAY, Mike	4-6	0-0	2-2	1	1	2	5	10	2	0	1	0	20			
03	CURRY, DaRon	0-0	0-0	0-0	0	0	0	0	0	0	0	0	0	2			
13	O'GARRO, Tyrone	0-0	0-0	1-4	1	2	3	1	3	0	1	3	0	18			
20	RHODES, Dondre	0-0	0-0	0-2	0	2	2	0	0	0	0	1	0	3			
22	EDGE, Darnell	4-6	1-2	1-1	0	0	0	1	10	2	1	0	2	20			
23	NEHME, Ghassan	3-4	3-3	0-0	0	1	1	2	9	1	1	0	1	18			
35	MILLER, Malik	1-1	0-0	0-0	0	0	0	0	2	0	0	0	0	2			
Team					0	2	2										
Totals		34-58	8-19	25-32	9	21	30	20	101	14	14	3	13	200			

FG % 1st Half: 15-24 62.5% 2nd half: 19-34 55.9% Game: 34-58 58.6% Deadball Rebounds 4
 3FG % 1st Half: 2-6 33.3% 2nd half: 6-13 46.2% Game: 8-19 42.1%
 FT % 1st Half: 7-8 87.5% 2nd half: 18-24 75.0% Game: 25-32 78.1%

Officials: Douglas Hooper, Ronnie Tyburski, Dave Fernandez
 Technical fouls: LIU Brooklyn-None. Fairleigh Dickinson-None.
 Attendance: 379

Score by periods	1st	2nd	Total
LIU Brooklyn	51	44	95
Fairleigh Dickinson	39	62	101

Last FG - LIU 2nd-00:21, FDU 2nd-01:00.
 Largest lead - LIU by 14 2nd-16:59, FDU by 7 2nd-01:00.
 LIU led for 27:12, FDU led for 08:54. Game was tied for 03:53.

	In	Off	2nd	Fast	Bench
Points	Paint	T/O	Chance	Break	
LIU	38	20	14	4	17
FDU	44	27	15	12	22

Score tied - 6 times.
 Lead changed - 7 times.

GAME 19 • ST. FRANCIS BROOKLYN • JAN. 23, 2016

St. Francis Brooklyn 64 • 8-13, 4-4 NEC

#	Player	Total			3-Ptr			Rebounds			PF	TP	A	TO	Blk	Stl	Min
		FG-FGA	FG-FGA	FT-FTA	FG-FGA	FG-FGA	FT-FTA	Off	Def	Tot							
03	JENIFER, Antonio	4-6	0-0	3-4	2	9	11	3	11	1	3	0	0	27			
13	WILLIAMS, Keon	2-5	0-2	1-2	2	3	5	0	15	1	2	1	1	39			
32	FALL, Amy	4-6	0-0	3-5	2	11	13	1	11	0	2	4	1	34			
00	JEWELL, Tyreek	4-8	1-2	4-5	1	3	4	3	13	1	2	0	1	26			
02	HOPKINSON, Yunus	1-7	1-6	6-6	0	2	2	3	9	3	4	0	1	27			
12	JONSSON, Dagur	0-4	0-4	0-0	0	1	1	0	0	2	0	0	0	13			
01	ROCKAFELER, Miles	0-0	0-0	0-0	0	0	0	0	0	0	0	0	0	0+			
14	DOSS, Jon	0-4	0-4	0-0	0	2	2	1	0	1	1	0	0	8			
15	HOOPER, Chris	6-8	0-0	3-4	1	3	4	4	15	1	3	0	0	19			
21	ALCINDOR, Marlon	0-3	0-2	0-0	0	1	1	0	0	1	0	0	0	7			
Team					2	3	5										
Totals		21-51	2-20	20-26	10	38	48	16	64	10	19	5	4	200			

FG % 1st Half: 10-27 37.0% 2nd half: 11-24 45.8% Game: 21-51 41.2% Deadball Rebounds 3
 3FG % 1st Half: 1-4 25.0% 2nd half: 1-6 16.7% Game: 2-20 10.0%
 FT % 1st Half: 4-6 66.7% 2nd half: 16-20 80.0% Game: 20-26 76.9%

LIU Brooklyn 49 • 9-10, 3-5 NEC

#	Player	Total			3-Ptr			Rebounds			PF	TP	A	TO	Blk	Stl	Min
		FG-FGA	FG-FGA	FT-FTA	FG-FGA	FG-FGA	FT-FTA	Off	Def	Tot							
13	ZANNA, Nura	0-1	0-0	2-2	2	0	2	4	2	0	3	0	1	10			
33	FRINK, Jerome	4-18	3-7	5-8	3	4	7	3	16	0	3	0	0	36			
11	HERNANDEZ, Joel	4-11	1-4	2-3	2	9	11	2	11	0	2	0	1	37			
15	HERMANNSSON, Martin	4-14	1-4	2-2	4	3	7	1									

GAME 25 • ST. FRANCIS BROOKLYN • MONDAY, FEB. 15 • POPE CENTER • 1:00 P.M.

GAME 21 • FAIRLEIGH DICKINSON • JAN. 30, 2016

Fairleigh Dickinson 88 • 11-10, 7-3 NEC

#	Player	Total		3-Ptr		Rebounds			PF	TP	A	TO	Blk	Stl	Min
		FG-FGA	FG-FGA	FT-FTA	FT-FTA	Off	Def	Tot							
05	POTTS Jr, Earl	f	2-8	1-4	2-2	2	5	7	4	7	0	3	0	1	27
04	HOLLOWAY, Mike	f	6-7	0-0	0-0	1	4	5	4	12	1	2	1	1	28
32	ANDERSON, Darian	g	5-14	2-5	9-9	0	3	3	3	21	7	3	0	1	39
15	TOWNES, Marques	g	8-14	1-3	1-4	0	5	5	1	18	6	1	0	1	33
22	EDGE, Darnell	g	3-6	1-2	0-0	0	2	2	4	7	1	0	0	0	26
03	CURRY, DaRon	g	1-1	0-0	0-0	0	0	0	2	2	2	0	0	1	4
13	O'GARRO, Tyrone	g	1-1	0-0	0-2	1	2	3	2	2	0	2	1	1	17
20	RHODEN, Dondre	g	0-0	0-0	0-0	0	0	0	1	0	0	0	0	0	3
23	HEME, Ghassan	g	4-7	4-7	4-4	0	2	2	2	16	1	0	0	0	18
24	SCHROBACK, Mike	g	1-1	1-1	0-0	0	0	0	2	3	0	1	0	0	5
Team						1	2	3			1				
Totals			31-59	10-22	16-21	5	25	30	25	88	18	13	2	6	200

FG % 1st Half: 15-29 51.7% 2nd half: 16-30 53.3% Game: 31-59 52.5%
 3FG % 1st Half: 6-12 50.0% 2nd half: 4-10 40.0% Game: 10-22 45.5%
 FT % 1st Half: 7-7 100.0 2nd half: 9-14 64.3% Game: 16-21 76.2%

LIU Brooklyn 85 • 10-11, 4-6 NEC

#	Player	Total		3-Ptr		Rebounds			PF	TP	A	TO	Blk	Stl	Min
		FG-FGA	FG-FGA	FT-FTA	FT-FTA	Off	Def	Tot							
13	ZANNA, Nura	f	4-7	0-0	0-0	2	4	6	2	8	0	1	0	0	18
33	FRINK, Jerome	f	5-13	2-2	0-0	2	8	10	2	12	2	5	0	4	30
11	HERNANDEZ, Joel	g	4-7	1-2	2-3	1	4	5	3	11	0	2	0	0	34
15	HERMANSSON, Martin	g	5-9	3-3	8-11	0	3	3	5	21	7	1	1	2	38
20	SAINTIL, Aakim	g	1-9	0-4	10-12	0	1	1	3	12	6	4	0	1	35
04	FLEMING, Iverson	g	0-0	0-0	0-0	0	0	0	0	0	0	0	0	0	4
04	WOODS, Trevin	g	5-10	3-7	4-4	1	2	3	4	17	0	0	1	1	27
22	FRIAS, Raul	g	0-0	0-0	0-0	0	0	0	0	0	0	0	0	1	2
23	FEIDANGA, Glenn	g	1-1	0-0	2-2	1	4	5	4	4	0	1	0	0	12
Team						3	1	4			1				
Totals			25-56	9-18	26-32	10	27	37	23	85	15	15	2	9	200

FG % 1st Half: 10-26 38.5% 2nd half: 15-30 50.0% Game: 25-56 44.6%
 3FG % 1st Half: 4-11 36.4% 2nd half: 5-7 71.4% Game: 9-18 50.0%
 FT % 1st Half: 18-22 81.8% 2nd half: 8-10 80.0% Game: 26-32 81.3%

Officials: Gary Tracy, Greg Quirolo, Mike Pilla
 Technical fouls: Fairleigh Dickinson-TEAM. LIU Brooklyn-None.
 Attendance: 1375

Score by periods	1st	2nd	Total
Fairleigh Dickinson	43	45	88
LIU Brooklyn	42	43	85

	In	Off	2nd	Fast	Bench
Points	34	17	11	6	23
FDU	28	14	9	8	21
LIU	28	14	9	8	21

Last FG - FDU 2nd-00:18, LIU 2nd-02:00.
 Largest lead - FDU by 10 1st-05:18, LIU by 5 2nd-02:00.
 FDU led for 26:49. LIU led for 07:40. Game was tied for 05:31.

Score tied - 11 times.
 Lead changed - 12 times.

GAME 22 • MOUNT ST. MARY'S • FEB. 4, 2016

Mount St. Mary's 74 • 10-14, 7-4 NEC

#	Player	Total		3-Ptr		Rebounds			PF	TP	A	TO	Blk	Stl	Min
		FG-FGA	FG-FGA	FT-FTA	FT-FTA	Off	Def	Tot							
15	GRAVES, Gregory	f	5-12	1-2	6-8	4	1	5	3	17	4	3	2	1	32
02	ASHE, BK	g	8-15	3-7	2-2	0	4	4	4	21	0	1	1	1	26
03	ROBINSON, Junior	g	5-14	2-5	8-9	0	2	2	4	20	2	2	0	0	32
04	NWANDU, Khalid	g	1-1	0-0	2-2	0	5	5	3	4	3	2	1	0	20
13	LONG, Elijah	g	1-7	1-1	0-0	0	3	3	0	3	1	2	0	0	14
05	McMANIMON, Liam	g	0-0	0-0	0-0	0	0	0	2	0	0	0	0	0	1
11	MILLER, Will	g	0-2	0-2	0-0	0	2	2	2	0	0	0	0	0	19
12	GLOVER, Charles	g	1-1	0-0	0-0	0	6	6	5	2	0	2	0	0	28
14	MANNING, Chris	g	0-0	0-0	0-0	0	0	0	0	0	0	0	0	0	0+
22	HENDERSON, Troy	g	0-1	0-0	0-0	1	1	2	2	0	0	0	0	0	11
50	DANAHER, Taylor	g	2-8	0-0	3-4	6	1	7	5	7	0	2	0	0	17
Team						2	2	4							
Totals			23-61	7-17	21-25	13	27	40	30	74	10	14	4	2	200

FG % 1st Half: 12-34 35.3% 2nd half: 11-27 40.7% Game: 23-61 37.7%
 3FG % 1st Half: 3-8 37.5% 2nd half: 4-9 44.4% Game: 7-17 41.2%
 FT % 1st Half: 8-8 100.0 2nd half: 13-17 76.5% Game: 21-25 84.0%

LIU Brooklyn 77 • 11-11, 5-6 NEC

#	Player	Total		3-Ptr		Rebounds			PF	TP	A	TO	Blk	Stl	Min
		FG-FGA	FG-FGA	FT-FTA	FT-FTA	Off	Def	Tot							
13	ZANNA, Nura	f	2-3	0-0	1-7	1	1	2	1	5	0	1	0	1	18
33	FRINK, Jerome	f	7-14	0-3	5-7	5	4	9	4	19	1	2	2	1	37
11	HERNANDEZ, Joel	g	5-9	1-2	3-6	1	5	6	4	14	1	1	0	0	29
15	HERMANSSON, Martin	g	5-11	2-4	9-10	1	6	7	3	21	3	4	0	0	38
20	SAINTIL, Aakim	g	2-7	0-0	4-6	0	5	5	3	8	5	4	0	1	31
03	FLEMING, Iverson	g	1-2	0-0	1-2	0	0	0	2	3	1	1	0	4	16
04	WOODS, Trevin	g	1-5	1-4	1-2	1	0	1	2	4	0	0	2	0	25
23	FEIDANGA, Glenn	g	1-2	0-0	1-2	1	3	4	3	3	0	0	0	0	6
Team						1	2	3							
Totals			24-53	4-13	25-42	11	26	37	22	77	11	13	4	7	200

FG % 1st Half: 12-25 48.0% 2nd half: 12-28 42.9% Game: 24-53 45.3%
 3FG % 1st Half: 2-6 33.3% 2nd half: 2-7 28.6% Game: 4-13 30.8%
 FT % 1st Half: 8-11 72.7% 2nd half: 17-31 54.8% Game: 25-42 59.5%

Officials: Bob Adams, Tom Courtney, Robert Barker
 Technical fouls: Mount St. Mary's-TEAM. LIU Brooklyn-None.
 Attendance: 1143

Score by periods	1st	2nd	Total
Mount St. Mary's	35	39	74
LIU Brooklyn	34	43	77

	In	Off	2nd	Fast	Bench
Points	24	10	6	6	9
MOUNT	32	12	14	4	10
LIU	32	12	14	4	10

Last FG - MOUNT 2nd-00:09, LIU 2nd-00:52.
 Largest lead - MOUNT by 7 1st-10:33, LIU by 8 2nd-12:36.
 MOUNT led for 20:55. LIU led for 18:12. Game was tied for 00:53.

Score tied - 1 time.
 Lead changed - 4 times.

GAME 23 • SACRED HEART • FEB. 6, 2016

LIU Brooklyn 90 • 11-12, 5-7 NEC

#	Player	Total		3-Ptr		Rebounds			PF	TP	A	TO	Blk	Stl	Min
		FG-FGA	FG-FGA	FT-FTA	FT-FTA	Off	Def	Tot							
33	FRINK, Jerome	f	5-13	1-5	4-6	4	4	8	5	15	1	3	0	1	32
11	HERNANDEZ, Joel	g	5-10	1-4	2-4	1	3	4	5	13	3	2	1	0	29
13	ZANNA, Nura	g	1-2	0-0	1-3	1	4	4	3	0	2	1	1	1	12
15	HERMANSSON, Martin	g	7-14	1-5	10-12	0	4	4	1	25	1	2	0	1	32
20	SAINTIL, Aakim	g	7-17	0-4	9-13	2	1	3	1	23	11	2	0	1	39
04	FLEMING, Iverson	g	0-3	0-1	1-2	0	2	2	1	1	1	0	1	1	14
04	WOODS, Trevin	g	1-4	1-3	0-2	3	4	7	5	3	1	1	0	1	27
22	FRIAS, Raul	g	1-1	1-1	0-0	0	0	0	1	3	0	0	0	0	1
23	FEIDANGA, Glenn	g	2-4	0-0	0-0	0	1	1	4	4	0	1	0	0	14
Team						1	0	1							
Totals			29-68	5-23	27-42	14	20	34	27	90	18	13	3	6	200

FG % 1st Half: 20-38 52.6% 2nd half: 9-30 30.0% Game: 29-68 42.6%
 3FG % 1st Half: 6-13 46.2% 2nd half: 3-13 23.1% Game: 9-23 38.7%
 FT % 1st Half: 5-8 62.5% 2nd half: 22-34 64.7% Game: 27-42 64.3%

Sacred Heart 98 • 8-15, 7-5 NEC

#	Player	Total		3-Ptr		Rebounds			PF	TP	A	TO	Blk	Stl	Min
		FG-FGA	FG-FGA	FT-FTA	FT-FTA	Off	Def	Tot							
00	ALLEN, Jordan	f	8-12	0-0	4-4	7	5	12	4	20	6	4	0	0	29
04	FALZON, Tevin	f	4-7	1-2	8-11	4	6	10	4	17	1	3	2	0	27
31	BROOM, Cane	g	6-18	2-7	5-9	0	7	7	5	19	3	3	0	1	35
11	McKNIGHT, Quincy	g	3-4	2-2	0-0	0	1	1	5	8	2	2	0	0	11
22	HOEHN, Sean	g													



#0 KWE ASKEW

Freshman • Forward

6-7 • 205

Stamford, Conn. • Stamford

Notes: Long and athletic frontcourt player who has shown potential... Active on the offensive glass, will provide depth at forward.

Background: Four-year letterwinner at Stamford High School... Named captain as a junior and senior... As a senior, was named First Team All-FCIAC, All-FCIAC Defensive Team and second-team all-state... Averaged 14.0 points, 14.0 rebounds, 5.0 assists and 3.0 blocks per game in his final year as a Black Knight... Named Most Outstanding Male Athlete for winter sports at Stamford... Also named to Hearst Connecticut Media Group Super 15.

Personal: Son of Lorenzo Askew and Belinda Lane... Has two siblings, Tatiana and Knadira... Plans to major in media arts.



#2 TREVON WOODS

Sophomore • Guard/Forward

6-6 • 200

Houston, Texas • Fort Bend Austin

Notes: Perimeter threat who came on strong at the end of the 2014-15 season... Has versatile offensive game... Is expected to be one of the main three-point threats for the Blackbirds this season.

2014-15: Named team's most improved player at the Annual Athletics Awards Banquet... Played in 22 games as a reserve for the Blackbirds... Averaged 2.3 points and 1.5 rebounds per contest... Had at least one field goal make in each of his last 13 contests... Scored season-high seven points at Mount St. Mary's... Connected on a pair of critical three-pointers in road win at Robert Morris... Pulled down season-high five rebounds against Wagner.

Background: Played four years of varsity basketball - one year at Riverside (La.) Academy and three at Stephen F. Austin High School in Texas... Was captain as a senior... Named all-district as a junior and senior... Scored career-high 48 points in a game as a sophomore... Helped Riverside to state title as a freshman... Also played one year of varsity football.

Personal: Son of Harold and Karen Woods... Has four siblings: Trevin, Kayla, Lavon and Kayleesha... Mother played basketball at Florida International... Twin brother, Trevin, is teammate at LIU Brooklyn... Cousin is Geno Smith, quarterback for the New York Jets... Plans to major in media arts with a concentration in graphic design and animation.

Opponent	Date	gs	min	Total		3-Pointers		Free throws		Rebounds				pf	a	t/o	blk	stl	pts	avg
				fg-fga	pct	3fg-fga	pct	ft-fa	pct	off	def	tot	avg							
at Loyola Maryland	11/16/15		10	0-1	.000	0-1	.000	0-0	.000	2	1	3	3.0	3	0	0	0	0	0	0.0
UNIVERSITY OF MAINE	11/19/15		13	1-3	.333	0-2	.000	0-0	.000	2	4	6	4.5	4	0	2	3	0	2	1.0
N.C. CENTRAL	11/22/15		8	1-2	.500	0-1	.000	0-2	.000	1	0	1	3.3	4	0	0	0	0	2	1.3
at FIU	11/25/15		8	0-3	.000	0-3	.000	0-0	.000	0	0	0	2.5	3	0	0	0	0	0	1.0
at Dartmouth	11/29/15		6	0-1	.000	0-1	.000	0-0	.000	0	0	0	2.0	0	0	1	0	0	0	0.8
UMASS LOWELL	12/03/15		4	0-0	.000	0-0	.000	0-0	.000	1	1	2	2.0	2	0	1	0	0	0	0.7
at Fordham	12/08/15		25	3-8	.375	3-5	.600	0-0	.000	1	2	3	2.1	3	2	0	0	1	9	1.9
at Niagara University	12/12/15		20	4-6	.667	3-5	.600	0-0	.000	0	1	1	2.0	1	0	2	0	0	11	3.0
SAM HOUSTON STATE	12/18/15		13	1-3	.333	1-1	1.000	0-0	.000	1	2	3	2.1	4	0	2	1	1	3	3.0
INCARNATE WORD	12/22/15		19	2-9	.222	1-7	.143	1-3	.333	0	2	2	2.1	2	0	0	0	0	6	3.3
at Massachusetts	12/29/15		16	2-7	.286	1-5	.200	0-0	.000	3	3	6	2.5	2	0	0	0	0	5	3.5
at Mount St. Mary's	01/02/16		8	0-3	.000	0-2	.000	0-0	.000	0	0	0	2.3	0	0	0	0	0	0	3.2
at Central Connecticut	01/04/16		10	0-2	.000	0-1	.000	0-0	.000	1	0	1	2.2	1	0	1	0	0	0	2.9
ROBERT MORRIS	01/07/16		7	0-1	.000	0-0	.000	0-0	.000	0	1	1	2.1	2	1	1	0	0	0	2.7
SAINT FRANCIS U.	01/09/16		13	0-4	.000	0-4	.000	0-0	.000	0	0	0	1.9	0	0	0	1	2	0	2.5
at WAGNER	01/14/16		dnp	-	-	-	-	-	-	-	-	-	-	-	-	-	-	-	-	-
at Bryant	01/16/16		dnp	-	-	-	-	-	-	-	-	-	-	-	-	-	-	-	-	-
at Fairleigh Dickinson	01/21/16		dnp	-	-	-	-	-	-	-	-	-	-	-	-	-	-	-	-	-
ST. FRANCIS BROOKLYN	01/23/16		dnp	-	-	-	-	-	-	-	-	-	-	-	-	-	-	-	-	-
SACRED HEART	01/27/16		dnp	-	-	-	-	-	-	-	-	-	-	-	-	-	-	-	-	-
FAIRLEIGH DICKINSON	01/30/16		dnp	-	-	-	-	-	-	-	-	-	-	-	-	-	-	-	-	-
MOUNT ST. MARY'S	02/04/16		dnp	-	-	-	-	-	-	-	-	-	-	-	-	-	-	-	-	-
at Sacred Heart	02/06/16		dnp	-	-	-	-	-	-	-	-	-	-	-	-	-	-	-	-	-
WAGNER	02/11/16		dnp	-	-	-	-	-	-	-	-	-	-	-	-	-	-	-	-	-
Totals		0	180	14-53	.264	9-38	.237	1-5	.200	12	17	29	1.9	31	3	10	5	4	38	2.5

SEASON HIGHS

Pts.....	11 at Niagara (12/12/15)	FTA.....	3 vs. Incarnate Word (12/22/15)
FG.....	4 at Niagara (12/12/15)	Reb.....	6, 2x, last at UMass (12/29/15)
FGA.....	9 vs. Incarnate Word (12/22/15)	Asst.....	2 at Fordham (12/8/15)
3FG.....	3, 2x, last at Niagara (12/12/15)	Block.....	3 vs. Maine (11/19/15)
3FGA.....	7 vs. Incarnate Word (12/22/15)	Steal.....	1, 2x, last vs. Sam Houston State (12/18/15)
FT.....	1 vs. Incarnate Word (12/22/15)	Min.....	25 at Fordham (12/8/15)

CAREER HIGHS

Pts.....	11 at Niagara (12/12/15)	FTA.....	3 vs. Incarnate Word (12/22/15)
FG.....	4 at Niagara (12/12/15)	Reb.....	6, 2x, last at UMass (12/29/15)
FGA.....	9 vs. Incarnate Word (12/22/15)	Asst.....	2 at Fordham (12/8/15)
3FG.....	3, 2x, last at Niagara (12/12/15)	Block.....	3, 2x, last vs. Maine (11/19/15)
3FGA.....	7 vs. Incarnate Word (12/22/15)	Steal.....	1, 3x, last vs. Sam Houston State (12/18/15)
FT.....	2, 3x, last at Sacred Heart (2/28/15)	Min.....	25 at Fordham (12/8/15)

Season	gp-gs	min/avg	Total		3-Point		F-Throws		Rebounds				Scoring							
			fg-fga	pct	fg-fga	pct	ft-fa	pct	off	def	tot	avg	pf	fo	ast	to	blk	stl	pts	avg
2014-15	21-0	147/7.0	16-53	.302	8-30	.267	6-7	.857	10	20	30	1.4	15	0	4	12	3	1	46	2.2
2015-16	15-0	180/12.0	14-53	.264	9-38	.237	1-5	.200	12	17	29	1.9	31	0	3	10	5	4	38	2.5
TOTAL	36-0	327/9.1	30-106	.283	17-68	.250	7-12	.583	22	37	59	1.6	46	0	7	22	8	5	84	2.3



#3 IVERSON FLEMING

Junior • Guard

6-1 • 160

North Brunswick, N.J. • North Brunswick

Notes: Solid player who is expected to challenge for a starting role in the backcourt this season... Is explosive in transition and has a knack for finishing in traffic at the rim.

2014-15: Saw action in all 30 games, including a start against Saint Francis U... Averaged 4.7 points, 1.4 assists and 1.1 rebounds in 18.5 minutes per game... Had four contests in which he registered double-digit points, including 14 points in overtime loss at Saint Joseph's... Also had career-best three steals against the Hawks... Tallied 11 points, including 3-for-3 performance from three-point range, in win at Maine... Scored 13 points against Hofstra... Had 10 points and season-high five rebounds at Bryant... Dished out season-high four assists on two occasions, both victories (vs. FIU, at Robert Morris).

2013-14: Played in 28 games, including four starts, averaging 12.1 minutes per contest... Scored 3.9 points per game as a freshman... Registered first collegiate points with three-point basket against Eastern Washington... Exploded for 22 points on 8-of-11 shooting in road win at NJIT, helping him to Northeast Conference Rookie of the Week honors... Had 18 points, including season-high nine field goals, in narrow road loss at Mount St. Mary's... Tallied 12 points against Fairleigh Dickinson.

Background: Three-year varsity letterwinner at North Brunswick Township High School... Named to All-Greater Middlesex Conference First Team as a senior... Scored over 1,000 points during high school career... Averaged 22.4 points per contest in 2012-13, connecting on 60 three-pointers in 27 games... Scored 32 points in double-overtime win over Old Bridge in first round of NJSIAA Tournament... Named Player to Watch by The Star-Ledger prior to senior season.

Personal: Son of Dennis and Natalie Fleming... Has three siblings - Eugene, Apria and Denis... Majoring in sports science.

Opponent	Date	gs	min	Total		3-Pointers		Free throws		Rebounds					pts	avg					
				fg-fga	pct	3fg-fga	pct	ft-fa	pct	off	def	tot	avg	pf			a	t/o	blk	stl	
at Loyola Maryland	11/16/15	*	26	2-6	.333	1-3	.333	2-2	1.000	0	0	0	0.0	2	0	1	0	1	7	7.0	
UNIVERSITY OF MAINE	11/19/15	*	25	2-10	.200	1-5	.200	0-0	.000	0	1	1	0.5	0	3	0	0	1	5	6.0	
N.C. CENTRAL	11/22/15	*	26	1-7	.143	0-2	.000	0-0	.000	1	2	3	1.3	2	0	1	1	1	2	4.7	
at FIU	11/25/15	*	24	0-5	.000	0-3	.000	0-0	.000	0	4	4	2.0	3	1	1	0	0	0	3.5	
at Dartmouth	11/29/15	*	32	6-14	.429	2-7	.286	0-1	.000	2	1	3	2.2	2	1	2	0	1	14	5.6	
UMASS LOWELL	12/03/15	*	34	7-14	.500	3-7	.429	0-0	.000	0	2	2	2.2	2	5	2	0	1	17	7.5	
at Fordham	12/08/15	*	20	2-4	.500	0-2	.000	0-0	.000	0	2	2	2.1	3	2	1	0	1	4	7.0	
at Niagara University	12/12/15	*	21	1-2	.500	0-0	.000	0-0	.000	1	2	3	2.3	2	1	2	0	0	2	6.4	
SAM HOUSTON STATE	12/18/15		15	1-4	.250	0-2	.000	1-2	.500	0	1	1	2.1	1	1	0	0	0	3	6.0	
INCARNATE WORD	12/22/15		27	1-6	.167	0-1	.000	1-2	.500	0	1	1	2.0	0	1	0	0	3	3	5.7	
at Massachusetts	12/29/15		23	0-4	.000	0-2	.000	0-1	.000	1	1	2	2.0	4	2	1	1	1	0	5.2	
at Mount St. Mary's	01/02/16		29	2-3	.667	0-0	.000	2-2	1.000	1	1	2	2.0	3	1	4	0	3	6	5.3	
at Central Connecticut	01/04/16		18	1-3	.333	1-1	1.000	0-0	.000	0	1	1	1.9	1	0	0	0	0	3	5.1	
ROBERT MORRIS	01/07/16		12	0-2	.000	0-2	.000	0-0	.000	0	2	2	1.9	3	2	1	0	0	0	4.7	
SAINT FRANCIS U.	01/09/16		16	1-4	.250	0-1	.000	0-0	.000	0	1	1	1.9	0	1	0	0	1	2	4.5	
at WAGNER	01/14/16	dnp		-	-	-	-	-	-	-	-	-	-	-	-	-	-	-	-	-	
at Bryant	01/16/16	dnp		-	-	-	-	-	-	-	-	-	-	-	-	-	-	-	-	-	
at Fairleigh Dickinson	01/21/16	dnp		-	-	-	-	-	-	-	-	-	-	-	-	-	-	-	-	-	
ST. FRANCIS BROOKLYN	01/23/16	dnp		-	-	-	-	-	-	-	-	-	-	-	-	-	-	-	-	-	
SACRED HEART	01/27/16		7	0-4	.000	0-1	.000	1-2	.500	0	0	0	1.8	0	0	0	0	0	1	4.3	
FAIRLEIGH DICKINSON	01/30/16		4	0-0	.000	0-0	.000	0-0	.000	0	0	0	1.6	0	0	0	0	0	0	4.1	
MOUNT ST. MARY'S	02/04/16		16	1-2	.500	0-0	.000	1-2	.500	0	0	0	1.6	2	1	1	0	4	3	4.0	
at Sacred Heart	02/06/16		14	0-3	.000	0-1	.000	1-2	.500	0	2	2	1.6	1	1	0	1	1	1	3.8	
WAGNER	02/11/16		20	1-1	1.000	1-1	1.000	1-2	.500	0	0	0	1.5	1	2	3	0	0	4	3.9	
Totals			8	409	29-98	.296	9-41	.220	10-18	.556	6	24	30	1.5	32	25	20	3	19	77	3.9

SEASON HIGHS

Pts.....	17 vs. UMass Lowell (12/3/15)	FTA.....	2, 5x, last vs. Mount St. Mary's (2/4/16)
FG.....	7 vs. UMass Lowell (12/3/15)	Reb.....	4 at FIU (11/25/15)
FGA.....	14, 2x, last vs. UMass Lowell (12/3/15)	Asst.....	5 vs. UMass Lowell (12/3/15)
3FG.....	3 vs. UMass Lowell (12/3/15)	Block.....	1, 3x, last at Sacred Heart (2/6/16)
3FGA.....	7, 2x, last vs. UMass Lowell (12/3/15)	Steal.....	4 vs. Mount St. Mary's (2/4/16)
FT.....	2, 2x, last at Mount St. Mary's (1/2/16)	Min.....	34 vs. UMass Lowell (12/3/15)

CAREER HIGHS

Pts.....	22 at NJIT (12/12/13)	FTA.....	4, 8x, last at St. Francis Brooklyn (3/4/15)
FG.....	9 at Mount St. Mary's (2/1/14)	Reb.....	7 vs. Robert Morris (2/6/14)
FGA.....	14 at Dartmouth (11/29/15)	Asst.....	5, 2x, last vs. UMass Lowell (12/3/15)
3FG.....	3, 3x, last vs. Hofstra (12/28/14)	Block.....	1, 5x, last at Sacred Heart (2/6/16)
3FGA.....	7, 2x, last at Dartmouth (11/29/15)	Steal.....	4 vs. Mount St. Mary's (2/4/16)
FT.....	4, 4x, last at St. Francis Brooklyn (3/4/15)	Min.....	34 vs. UMass Lowell (12/3/15)

Season	gp-gs	min/avg	Total		3-Point		F-Throws		Rebounds				Scoring							
			fg-fga	pct	fg-fga	pct	ft-fa	pct	off	def	tot	avg	pf	fo	ast	to	blk	stl	pts	avg
2013-14	28-4	338/12.1	39-107	.364	13-47	.277	18-27	.667	11	28	39	1.4	22	0	11	16	1	7	109	3.9
2014-15	29-1	534/18.4	44-129	.341	21-66	.318	22-36	.611	5	28	33	1.1	59	1	41	31	1	21	131	4.5
2015-16	20-8	409/20.5	29-98	.296	9-41	.220	10-18	.556	6	24	30	1.5	32	0	25	20	3	19	77	3.9
TOTAL	77-13	1281/16.6	112-334	.335	43-154	.279	50-81	.617	22	80	102	1.3	113	1	77	67	5	47	317	4.1



#4 TREVIN WOODS

Sophomore • Guard/Forward

6-6 • 200

Houston, Texas • Fort Bend Austin

Notes: Long, athletic player who can create mismatch problems with his ability to shoot the ball from the perimeter... Suffered knee injury during summer but is expected back towards the end of November.

2014-15: Played in 29 contests as a freshman, seeing increased action during Northeast Conference play... Averaged 4.2 points and 3.5 rebounds in 14.9 minutes per game... Had seven points and eight rebounds in breakout performance against Saint Joseph's... Recorded first career double-double with 13 points and 12 rebounds in double-overtime win over Sacred Heart... Matched season high with 13 points in road win at Robert Morris... Also had 10 points and seven boards in regular-season finale at Sacred Heart.

Background: Played four years of varsity basketball - one year at Riverside (La.) Academy and three at Stephen F. Austin High School in Texas... Was captain as a senior... Named all-district as a junior... Scored career-high 36 points in a game as a sophomore... Helped Riverside to state title as a freshman.

Personal: Son of Harold and Karen Woods... Has four siblings: Trevon, Kayla, Lavon and Kayleasha... Mother played basketball at Florida International... Twin brother, Trevon, is teammate at LIU Brooklyn... Cousin is Geno Smith, quarterback for the New York Jets... Plans to major in computer science.

Opponent	Date	gs	min	Total		3-Pointers		Free throws		Rebounds					pts	avg				
				fg-fga	pct	3fg-fga	pct	ft-fa	pct	off	def	tot	avg	pf			a	t/o	blk	stl
at Loyola Maryland	11/16/15		dnp	-	-	-	-	-	-	-	-	-	-	-	-	-	-	-	-	
UNIVERSITY OF MAINE	11/19/15		dnp	-	-	-	-	-	-	-	-	-	-	-	-	-	-	-	-	
N.C. CENTRAL	11/22/15	1		0-0	.000	0-0	.000	0-0	.000	0	0	0	0.0	1	0	0	0	0	0	
at FIU	11/25/15	10		1-3	.333	0-2	.000	0-0	.000	0	1	1	0.5	2	0	0	0	0	2	
at Dartmouth	11/29/15	24		0-5	.000	0-4	.000	0-0	.000	1	4	5	2.0	1	0	1	1	0	0	
UMASS LOWELL	12/03/15	14		1-6	.167	1-5	.200	1-2	.500	3	0	3	2.3	1	0	0	0	1	4	
at Fordham	12/08/15	11		0-1	.000	0-1	.000	0-0	.000	0	1	1	2.0	3	0	2	0	1	0	
at Niagara University	12/12/15	5		0-0	.000	0-0	.000	0-0	.000	0	0	0	1.7	1	0	0	0	0	0	
SAM HOUSTON STATE	12/18/15	13		0-3	.000	0-3	.000	1-2	.500	1	5	6	2.3	3	1	0	1	1	1	
INCARNATE WORD	12/22/15	10		0-0	.000	0-0	.000	0-0	.000	0	0	0	2.0	1	1	1	0	1	0	
at Massachusetts	12/29/15	12		2-4	.500	0-1	.000	0-0	.000	0	2	2	2.0	2	0	0	0	0	4	
at Mount St. Mary's	01/02/16	7		0-1	.000	0-1	.000	0-0	.000	0	2	2	2.0	1	0	0	0	0	0	
at Central Connecticut	01/04/16	12		1-3	.333	0-1	.000	2-3	.667	1	3	4	2.2	3	0	2	0	0	4	
ROBERT MORRIS	01/07/16	27		4-7	.571	2-4	.500	0-0	.000	1	3	4	2.3	4	0	0	0	2	10	
SAINT FRANCIS U.	01/09/16	2		0-0	.000	0-0	.000	0-0	.000	0	0	0	2.2	0	0	1	0	0	0	
at WAGNER	01/14/16	5		0-3	.000	0-3	.000	0-0	.000	0	1	1	2.1	1	0	0	0	0	0	
at Bryant	01/16/16	26		6-11	.545	6-10	.600	2-2	1.000	0	5	5	2.3	1	0	1	1	1	20	
at Fairleigh Dickinson	01/21/16	29		5-9	.556	5-7	.714	2-2	1.000	2	2	4	2.4	3	0	0	0	0	17	
ST. FRANCIS BROOKLYN	01/23/16	24		0-8	.000	0-7	.000	0-0	.000	2	1	3	2.4	2	1	1	0	3	0	
SACRED HEART	01/27/16	22		3-5	.600	1-2	.500	0-0	.000	4	6	10	2.8	4	0	3	2	0	7	
FAIRLEIGH DICKINSON	01/30/16	27		5-10	.500	3-7	.429	4-4	1.000	1	2	3	2.8	4	0	0	1	1	17	
MOUNT ST. MARY'S	02/04/16	25		1-5	.200	1-4	.250	1-2	.500	1	0	1	2.8	2	0	0	2	0	4	
at Sacred Heart	02/06/16	27		1-4	.250	1-3	.333	0-2	.000	3	4	7	3.0	5	1	1	0	1	3	
WAGNER	02/11/16	12		0-3	.000	0-2	.000	0-0	.000	0	4	4	3.0	1	0	2	0	1	0	
Totals		0	345	30-91	.330	20-67	.299	13-19	.684	20	46	66	3.0	46	4	15	8	13	93	4.2

SEASON HIGHS

Pts20 at Bryant (1/16/16)	FTA4 vs. Fairleigh Dickinson (1/30/16)
FG6 at Bryant (1/16/16)	Reb10 vs. Sacred Heart (1/27/16)
FGA11 at Bryant (1/16/16)	Asst1, 4x, last at Sacred Heart (2/6/16)
3FG6 at Bryant (1/16/16)	Block2, 2x, last vs. Mount St. Mary's (2/4/16)
3FGA10 at Bryant (1/16/16)	Steal3 vs. St. Francis Brooklyn (1/23/16)
FT4 vs. Fairleigh Dickinson (1/30/16)	Min29 at Fairleigh Dickinson (1/21/16)

CAREER HIGHS

Pts20 at Bryant (1/16/16)	FTA4, 3x, last vs. Fairleigh Dickinson (1/30/16)
FG6 at Bryant (1/16/16)	Reb12 vs. Sacred Heart (1/8/15)
FGA12 vs. Sacred Heart (1/8/15)	Asst2 at Central Connecticut (1/15/15)
3FG6 at Bryant (1/16/16)	Block2, 6x, last vs. Mount St. Mary's (2/4/16)
3FGA10 at Bryant (1/16/16)	Steal3 vs. St. Francis Brooklyn (1/23/16)
FT4, 3x, last vs. Fairleigh Dickinson (1/30/16)	Min29 at Fairleigh Dickinson (1/21/16)

Season	gp-gs	min/avg	Total		3-Point		F-Throws		Rebounds				Scoring							
			fg-fga	pct	fg-fga	pct	ft-fa	pct	off	def	tot	avg	pf	fo	ast	to	blk	stl	pts	avg
2014-15	28-0	417/14.9	43-113	.381	21-64	.328	12-13	.923	35	64	99	3.5	44	1	9	14	18	10	119	4.3
2015-16	22-0	345/15.7	30-91	.330	20-67	.299	13-19	.684	20	46	66	3.0	46	1	4	15	8	13	93	4.2
TOTAL	50-0	762/15.2	73-204	.358	41-131	.313	25-32	.781	55	110	165	3.3	90	2	13	29	26	23	212	4.2



#11 JOEL HERNANDEZ

Junior • Guard

6-3 • 180

Teaneck, N.J. • Teaneck

Notes: Strong, athletic guard who has explosive dribble-drive ability... Creates contact and can finish in the lane or get to the free throw line with regularity... Expected to contend for a starting role as a junior.

2014-15: Played in 29 contests for LIU Brooklyn, starting 14 games during Northeast Conference play... Averaged 8.0 points and 4.0 rebounds per game... Reached double figures in scoring 10 times... Registered career-high 18 points in road loss to Wagner... Outing capped a three-game streak in which he scored 15.7 points per game... Also had 15 points against Fairleigh Dickinson and 14 against Sacred Heart... Totalled team-best 15 points in loss to Stony Brook at Madison Square Garden... Also tallied 23 assists, 22 steals and 12 blocked shots.

2013-14: Injury-plagued first season with the Blackbirds... Saw action in 17 games, seeing increased playing time down the stretch of the year... Scored 14 points and grabbed seven rebounds at home against Saint Francis U... In return trip against the Red Flash, had 12 points and six rebounds in 19 minutes of action... Recorded first double-double of his career with 17 points and 12 rebounds in overtime loss to Central Connecticut... Averaged 10.8 points and 5.5 rebounds over final four games of the season.

Background: Played four seasons at Teaneck High School... Led the Highwaymen to three straight North I Group III titles... Also scored school-record 50 points in contest against Demarest as a senior... Was named Bergen Record Male Athlete of the Week... Bergen Record North New Jersey Player of the Year in 2012-13... Averaged 21.9 points and 11.2 rebounds per game... Scored school-record 1,590 points during his career, bettering mark set by current University of Pittsburgh guard Chris Jones... Played AAU basketball for Team N.J. Playaz.

Personal: Son of Johnny Hernandez and Ramona Tifa... Has one sister, Ivy... Majoring in sports science.

Opponent	Date	gs	min	Total		3-Pointers		Free throws		Rebounds				pf	a	t/o	blk	stl	pts	avg	
				fg-fga	pct	3fg-fga	pct	ft-fa	pct	off	def	tot	avg								
at Loyola Maryland	11/16/15	*	30	6-16	.375	1-4	.250	2-4	.500	3	6	9	9.0	0	1	1	0	0	15	15.0	
UNIVERSITY OF MAINE	11/19/15	*	25	2-7	.286	0-2	.000	0-0	.000	1	1	2	5.5	3	2	3	0	1	4	9.5	
N.C. CENTRAL	11/22/15	*	31	5-7	.714	1-1	1.000	5-8	.625	3	2	5	5.3	4	0	1	1	1	16	11.7	
at FIU	11/25/15	*	33	4-9	.444	2-3	.667	0-0	.000	2	5	7	5.8	4	0	0	1	2	10	11.3	
at Dartmouth	11/29/15	*	17	0-5	.000	0-1	.000	0-0	.000	1	4	5	5.6	5	3	1	0	0	0	9.0	
UMASS LOWELL	12/03/15	*	31	7-10	.700	1-2	.500	1-4	.250	3	5	8	6.0	1	0	3	0	0	16	10.2	
at Fordham	12/08/15	*	18	1-3	.333	0-0	.000	0-0	.000	0	1	1	5.3	3	0	1	0	1	2	9.0	
at Niagara University	12/12/15	*	26	2-11	.182	1-4	.250	0-0	.000	3	2	5	5.3	0	1	1	0	0	5	8.5	
SAM HOUSTON STATE	12/18/15	*	35	6-13	.462	1-3	.333	3-7	.429	1	5	6	5.3	3	2	2	0	2	16	9.3	
INCARNATE WORD	12/22/15	*	29	3-5	.600	1-1	1.000	2-7	.286	0	7	7	5.5	3	1	1	1	0	9	9.3	
at Massachusetts	12/29/15	*	24	5-10	.500	1-2	.500	2-3	.667	2	4	6	5.5	3	2	1	0	2	13	9.6	
at Mount St. Mary's	01/02/16	*	32	4-11	.364	0-2	.000	6-7	.857	2	2	4	5.4	1	0	5	0	2	14	10.0	
at Central Connecticut	01/04/16	*	25	4-9	.444	0-0	.000	3-4	.750	3	2	5	5.4	3	0	3	0	1	11	10.1	
ROBERT MORRIS	01/07/16	*	29	1-8	.125	0-2	.000	5-8	.625	1	3	4	5.3	1	1	0	0	0	7	9.9	
SAINT FRANCIS U.	01/09/16	*	29	6-12	.500	1-4	.250	0-0	.000	2	4	6	5.3	5	2	4	2	1	13	10.1	
at WAGNER	01/14/16	*	37	2-9	.222	0-3	.000	2-3	.667	0	2	2	5.1	1	2	0	0	1	6	9.8	
at Bryant	01/16/16	*	34	5-9	.556	0-2	.000	5-6	.833	2	5	7	5.2	1	1	1	0	2	15	10.1	
at Fairleigh Dickinson	01/21/16	*	36	9-16	.563	4-7	.571	5-5	1.000	4	6	10	5.5	3	1	3	0	1	27	11.1	
ST. FRANCIS BROOKLYN	01/23/16	*	37	4-11	.364	1-4	.250	2-3	.667	2	9	11	5.8	2	0	2	0	1	11	11.1	
SACRED HEART	01/27/16	*	35	6-11	.545	1-3	.333	2-2	1.000	0	6	6	5.8	1	1	2	0	1	15	11.3	
FAIRLEIGH DICKINSON	01/30/16	*	34	4-7	.571	1-2	.500	2-3	.667	1	4	5	5.8	3	0	2	0	0	11	11.2	
MOUNT ST. MARY'S	02/04/16	*	29	5-9	.556	1-2	.500	3-6	.500	1	5	6	5.8	4	1	1	0	0	14	11.4	
at Sacred Heart	02/06/16	*	29	5-10	.500	1-4	.250	2-4	.500	1	3	4	5.7	5	3	2	1	0	13	11.4	
WAGNER	02/11/16	*	35	4-12	.333	0-2	.000	1-2	.500	2	7	9	5.8	1	2	0	0	0	9	11.3	
Totals			23	720	100-230	.435	19-60	.317	53-86	.616	40	100	140	5.8	60	26	40	6	19	272	11.3

SEASON HIGHS

Pts.....27 at Fairleigh Dickinson (1/21/16)	FTA.....8, 2x, last vs. Robert Morris (1/7/16)
FG.....9 at Fairleigh Dickinson (1/21/16)	Reb.....11 vs. St. Francis Brooklyn (1/23/16)
FGA.....16, 2x, last at Fairleigh Dickinson (1/21/16)	Asst.....3, 2x, last at Sacred Heart (2/6/16)
3FG.....4 at Fairleigh Dickinson (1/21/16)	Block.....2 vs. Saint Francis U. (1/9/16)
3FGA.....7 at Fairleigh Dickinson (1/21/16)	Steal.....2, 5x, last at Bryant (1/16/16)
FT.....6 at Mount St. Mary's (1/2/16)	Min.....37, 2x, last vs. St. Francis Brooklyn (1/23/16)

CAREER HIGHS

Pts.....27 at Fairleigh Dickinson (1/21/16)	FTA.....10 at Fairleigh Dickinson (1/24/15)
FG.....9 at Fairleigh Dickinson (1/21/16)	Reb.....12 vs. Central Connecticut (2/27/14)
FGA.....16, 2x, last at Fairleigh Dickinson (1/21/16)	Asst.....6 vs. Central Connecticut (1/29/15)
3FG.....4 at Fairleigh Dickinson (1/21/16)	Block.....2, 3x, last vs. Saint Francis U. (1/9/16)
3FGA.....7 at Fairleigh Dickinson (1/21/16)	Steal.....4 vs. Robert Morris (2/5/15)
FT.....6, 3x, last at Mount St. Mary's (1/2/16)	Min.....37, 2x, last vs. St. Francis Brooklyn (1/23/16)

Season	gp-gs	min/avg	Total		3-Point		F-Throws		Rebounds				Scoring							
			fg-fga	pct	fg-fga	pct	ft-fa	pct	off	def	tot	avg	pf	fo	ast	to	blk	stl	pts	avg
2013-14	17-0	221/13.0	33-80	.413	6-21	.286	10-24	.417	14	31	45	2.6	21	2	8	15	1	4	82	4.8
2014-15	29-14	688/23.7	84-215	.391	10-34	.294	55-106	.519	36	81	117	4.0	63	2	23	47	11	22	233	8.0
2015-16	24-23	720/30.0	100-230	.435	19-60	.317	53-86	.616	40	100	140	5.8	60	3	26	40	6	19	272	11.3
TOTAL	70-37	1629/23.3	217-525	.413	35-115	.304	118-216	.546	90	212	302	4.3	144	7	57	102	18	45	587	8.4



#12 MITCHELL McMULLEN

Freshman • Guard

5-8 • 165

Schertz, Texas • Samuel Clemens

Notes: Preferred walk-on... Has shown ability to knock down perimeter shots in practice.

Background: Three-year letterwinner at Samuel Clemens... Three-time all-district selection... Averaged 11.0 points, 6.0 assists and 3.0 steals per game as a senior... Helped the Bears to two Texas State Final Four appearances.

Personal: Son of Tom and Jacqui McMullen... Has two siblings, Luke and twin brother Grant... Plans to major in sport management.



#13 NURA ZANNA

R-Sophomore • Forward

6-7 • 240

Kaduna, Nigeria • Coral Springs (Fla.) Christian

Notes: Imposing physical specimen who has quick, nimble feet for a big man... One of the top young frontcourt players in the NEC, led all rookies last season in rebounding (6.3/gm).

2014-15: Member of the Northeast Conference All-Rookie Team... Started and played all 30 games in the frontcourt for the Blackbirds... Averaged 8.5 points and team-best 6.3 rebounds in 23.3 minutes per contest... Rebounding total ranked ninth in the league... Reached double figures in scoring 13 times... Shot 47.4 percent from the floor to rank ninth in the NEC... Was named NEC Rookie of the Week after scoring 10 points and pulling down six rebounds against St. John's... Phillips... Had 26 points and 15 boards, including go-ahead three-point play in CSC's win over Sagemont... Helped Crusaders advance to Class 3A state championship for first time in school history... Had 22 points, eight rebounds and four steals in state semifinal win... A McDonald's All-America nominee... Averaged 20.9 points and 9.8 rebounds as a junior... Native of Nigeria, played for Nigerian U-16 basketball team with current St. John's basketball player Chris Obekpa.

2013-14: Earned redshirt after missing entire season due to injury.

Background: Spent three seasons at Coral Springs Christian High School in Florida... Named Sun-Sentinel and Miami Herald Florida Small-Schools Boys Basketball Player of the Year as a senior after averaging 19.0 points and 10.0 rebounds per game... Also named to Florida 3A All-State Team by Florida Association of Basketball Coaches... Scored school-record 40 points and grabbed 14 rebounds against Orlando's Dr. Phillips... Had 26 points and 15 boards, including go-ahead three-point play in CSC's win over Sagemont... Helped Crusaders advance to Class 3A state championship for first time in school history... Had 22 points, eight rebounds and four steals in state semifinal win... A McDonald's All-America nominee... Averaged 20.9 points and 9.8 rebounds as a junior... Native of Nigeria, played for Nigerian U-16 basketball team with current St. John's basketball player Chris Obekpa.

Personal: Has six siblings, including brother Talib who played basketball at Pitt... Majoring in economics.

Opponent	Date	gs	min	Total		3-Pointers		Free throws		Rebounds				pf	a	t/o	blk	stl	pts	avg	
				fg-fga	pct	3fg-fga	pct	ft-fa	pct	off	def	tot	avg								
at Loyola Maryland	11/16/15	*	20	2-4	.500	0-0	.000	2-4	.500	4	4	8	8.0	5	0	3	2	1	6	6.0	
UNIVERSITY OF MAINE	11/19/15	*	16	4-6	.667	0-0	.000	0-0	.000	4	7	11	9.5	3	2	3	0	0	8	7.0	
N.C. CENTRAL	11/22/15	*	18	1-2	.500	0-0	.000	4-7	.571	0	3	3	7.3	4	1	0	0	0	6	6.7	
at FIU	11/25/15	*	19	2-8	.250	0-0	.000	2-2	1.000	2	0	2	6.0	3	0	1	0	0	6	6.5	
at Dartmouth	11/29/15	*	17	1-3	.333	0-0	.000	2-2	1.000	3	2	5	5.8	2	0	2	0	0	4	6.0	
UMASS LOWELL	12/03/15	*	19	2-4	.500	0-0	.000	1-2	.500	2	6	8	6.2	2	0	0	0	0	5	5.8	
at Fordham	12/08/15	*	30	0-1	.000	0-0	.000	1-2	.500	2	8	10	6.7	4	0	4	1	0	1	5.1	
at Niagara University	12/12/15	*	36	5-10	.500	0-0	.000	2-2	1.000	4	1	5	6.5	5	0	0	0	1	12	6.0	
SAM HOUSTON STATE	12/18/15	*	21	3-4	.750	0-0	.000	3-4	.750	1	4	5	6.3	3	1	2	0	1	9	6.3	
INCARNATE WORD	12/22/15	*	20	3-8	.375	0-0	.000	1-3	.333	1	5	6	6.3	4	0	5	0	1	7	6.4	
at Massachusetts	12/29/15	*	22	1-2	.500	0-0	.000	4-5	.800	2	3	5	6.2	2	0	3	0	1	6	6.4	
at Mount St. Mary's	01/02/16	*	11	0-1	.000	0-0	.000	0-2	.000	1	2	3	5.9	0	0	2	0	0	0	5.8	
at Central Connecticut	01/04/16	*	26	2-5	.400	0-0	.000	2-3	.667	3	11	14	6.5	4	0	2	0	0	6	5.8	
ROBERT MORRIS	01/07/16	*	14	2-4	.500	0-0	.000	2-4	.500	2	3	5	6.4	3	0	2	0	0	6	5.9	
SAINT FRANCIS U.	01/09/16	*	25	3-6	.500	0-0	.000	2-4	.500	6	4	10	6.7	4	0	1	1	1	8	6.0	
at WAGNER	01/14/16	*	23	4-6	.667	0-0	.000	4-5	.800	4	3	7	6.7	5	0	1	0	1	12	6.4	
at Bryant	01/16/16	*	16	1-2	.500	0-0	.000	1-2	.500	3	3	6	6.6	4	0	1	0	1	3	6.2	
at Fairleigh Dickinson	01/21/16	*	13	0-1	.000	0-0	.000	0-0	.000	2	1	3	6.4	2	1	1	0	0	0	5.8	
ST. FRANCIS BROOKLYN	01/23/16	*	10	0-1	.000	0-0	.000	2-2	1.000	2	0	2	6.2	4	0	3	0	1	2	5.6	
SACRED HEART	01/27/16	*	25	2-7	.286	0-0	.000	0-2	.000	3	1	4	6.1	5	1	0	0	1	4	5.6	
FAIRLEIGH DICKINSON	01/30/16	*	18	4-7	.571	0-0	.000	0-0	.000	2	4	6	6.1	2	0	1	0	0	8	5.7	
MOUNT ST. MARY'S	02/04/16	*	18	2-3	.667	0-0	.000	1-7	.143	1	1	2	5.9	1	0	1	0	1	5	5.6	
at Sacred Heart	02/06/16	*	12	1-2	.500	0-0	.000	1-3	.333	3	1	4	5.8	4	0	2	1	1	3	5.5	
WAGNER	02/11/16	*	23	7-11	.636	0-0	.000	2-3	.667	3	2	5	5.8	4	0	3	0	1	16	6.0	
Totals			23	472	52-108	.481	0-0	.000	39-70	.557	60	79	139	5.8	79	6	43	5	13	143	6.0

SEASON HIGHS

Pts.....	16 vs. Wagner (2/11/16)	FTA.....	7, 2x, last vs. Mount St. Mary's (2/4/16)
FG.....	7 vs. Wagner (2/11/16)	Reb.....	14 at Central Connecticut (1/4/16)
FGA.....	11 vs. Wagner (2/11/16)	Asst.....	2 vs. Maine (11/19/15)
3FG.....	n/a	Block.....	2 at Loyola (Md.) (11/16/15)
3FGA.....	n/a	Steal.....	1, 12x, last at Sacred Heart (2/6/16)
FT.....	4, 3x, last at Wagner (1/14/16)	Min.....	36 at Niagara (12/12/15)

CAREER HIGHS

Pts.....	17 at Wagner (1/10/15)	FTA.....	14 vs. St. Francis Brooklyn (2/26/15)
FG.....	7, 2x, last vs. Wagner (2/11/16)	Reb.....	14 at Central Connecticut (1/4/16)
FGA.....	12, 2x, last vs. Saint Francis U. (2/7/15)	Asst.....	3 at Mount St. Mary's (2/19/15)
3FG.....	n/a	Block.....	3 vs. Stony Brook (11/27/14)
3FGA.....	1, 2x, last at St. Francis Brooklyn (1/31/15)	Steal.....	3 at Mount St. Mary's (2/19/15)
FT.....	9 vs. Sacred Heart (1/8/15)	Min.....	36 at Niagara (12/12/15)

Season	gp-gs	min/avg	Total		3-Point		F-Throws		Rebounds				Scoring							
			fg-fga	pct	fg-fga	pct	ft-fa	pct	off	def	tot	avg	pf	fo	ast	to	blk	stl	pts	avg
2014-15	29-29	680/23.4	87-184	.473	0-2	.000	73-131	.557	65	116	181	6.2	107	10	13	63	15	15	247	8.5
2015-16	24-23	472/19.7	52-108	.481	0-0	.000	39-70	.557	60	79	139	5.8	79	4	6	43	5	13	143	6.0
TOTAL	53-52	1152/21.7	139-292	.476	0-2	.000	112-201	.557	125	195	320	6.0	186	14	19	106	20	28	390	7.4



#14 MARK PARISI

Sophomore • Guard

5-11 • 165

Queens, N.Y. • Archbishop Molloy

2014-15: Walked on to the team before the start of the season... Played in two games against Mount St. Mary's and Sacred Heart.

Background: Played three seasons at Archbishop Molloy High School under head coach Jack Curran, before transferring to Shenandoah Valley Christian Academy in Stephens City, Va. for his senior year... Averaged 13.0 points, 12.7 assists, 5.3 rebounds and 4.2 steals per game for the Patriots... Named National Christian School Athletic Association Small-School Division First Team All-American... Led the state of Virginia in assists... Scored over 1,000 points during high school career.

Season	gp-gs	min/avg	Total		3-Point		F-Throws		Rebounds				Scoring								
			fg-fga	pct	fg-fga	pct	ft-fa	pct	off	def	tot	avg	pf	fo	ast	to	blk	stl	pts	avg	
2014-15	2-0	4/2.0	0-0	.000	0-0	.000	0-0	.000	0	1	1	0.5	0	0	0	0	0	0	0	0	0.0
TOTAL	2-0	4/2.0	0-0	.000	0-0	.000	0-0	.000	0	1	1	0.5	0	0	0	0	0	0	0	0	0.0



#15 MARTIN HERMANNSSON

Sophomore • Guard

6-3 • 170

Reykjavik, Iceland • Reykjavik

Notes: Had an impressive summer showing at the FIBA EuroBasket Tournament, averaging 4.6 points per game in limited playing time For Iceland... Crafty scorer who can create off the dribble... Unselfish player who is expected to play a big role in 2015-16.

2014-15: Northeast Conference All-Rookie Team selection... Started all 30 games in the backcourt, averaging team-high 31.2 minutes per contest... Ranked second on the team in scoring at 10.1 points per game... Shot team-best 86.4 percent from free-throw line to rank third in the NEC... Handed out 100 assists to rank second on the team and eighth in the league... Also pulled down 3.8 rebounds per game... Reached double figures in scoring 17 times, including 12 occasions during NEC play... Poured in career-high 21 points, including 12-for-15 performance from the free-throw line, and had five steals in road win at Fairleigh Dickinson... Tallied 19 points in home loss to Lehigh... Scored 17 points, nine of which came at the charity stripe, in home win at Robert Morris... Had seven games with at least five assists, including career-best seven in home win at Saint Francis U... Registered five or more rebounds 11 times, including career-best seven on three separate occasions (at New Hampshire, vs. Bryant and vs. Fairleigh Dickinson).

Background: Played four seasons for Reykjavik in Iceland's Dominos League... Had breakout campaign in 2012-13, averaging 14.5 points, 3.9 assists and 3.1 rebounds in 27.2 minutes per game... Registered career highs in points (18.4 ppg), assists (4.4 apg), rebounds (3.4 rpg) and steals (1.9 spg) while helping squad to 21-1 regular season record and a Dominos League championship in 2013-14... For his efforts was named MVP and Young Player of the Year of Dominos League during regular seasons... Member of the five-player Dominos League all-star team in 2014... Was also named Most Outstanding Player in final series against Grindavik, averaging 19.0 points, 3.5 assists, 3.3 rebounds and 2.0 steals over four games... Had 26 points in series-clinching contest to go along with five rebounds and four assists... Has extensive amount of international playing experience... Became member of Iceland's National Team in 2013, and played in all four contests of FIBA EuroBasket qualifying round in 2014... Played for national team in 2015 EuroBasket Tournament, averaging 4.6 points, 1.8 rebounds and 1.2 assists over five games... Scored 22 points to lift Iceland to 83-70 win over Great Britain... Averaged 9.5 points and 3.3 rebounds per game, helping Iceland to country's first EuroBasket berth... Led nation's U18 team in scoring at the 2012 FIBA U18 European Championships, averaging 17.3 points per game... Had five games of 20 points or more, including 26 points in win over Sweden... Named MVP of Nordic Championships with Iceland's U16 National Team in 2010... Named Player of the Game in the finals of the 2012 Nordic Championships as a U18 team member, and was named to the all-star team.

Personal: Son of Hermann Hauksson and Margret Eliasdottir... Father played professional basketball in Belgium... Has two siblings, Arnór Hermannsson and Anna Margret Hermannsdottir... Plans to major in business management.

Opponent	Date	gs	min	Total		3-Pointers		Free throws		Rebounds				pf	a	t/o	blk	stl	pts	avg	
				fg-fga	pct	3fg-fga	pct	ft-fa	pct	off	def	tot	avg								
at Loyola Maryland	11/16/15	*	34	5-10	.500	2-6	.333	2-2	1.000	3	2	5	5.0	2	7	3	0	2	14	14.0	
UNIVERSITY OF MAINE	11/19/15	*	35	7-14	.500	0-4	.000	9-11	.818	1	1	2	3.5	2	1	2	0	2	23	18.5	
N.C. CENTRAL	11/22/15	*	35	3-8	.375	1-2	.500	8-8	1.000	0	1	1	2.7	0	3	1	1	0	15	17.3	
at FIU	11/25/15	*	35	7-12	.583	0-3	.000	3-5	.600	2	5	7	3.8	4	1	2	0	3	17	17.3	
at Dartmouth	11/29/15	*	34	5-9	.556	3-3	1.000	2-2	1.000	0	6	6	4.2	1	3	1	2	0	15	16.8	
UMASS LOWELL	12/03/15	*	31	3-11	.273	2-4	.500	2-2	1.000	0	3	3	4.0	4	6	2	0	2	10	15.7	
at Fordham	12/08/15	*	43	5-10	.500	1-2	.500	4-4	1.000	0	2	2	3.7	3	5	2	0	1	15	15.6	
at Niagara University	12/12/15	*	43	5-14	.357	1-4	.250	6-7	.857	1	2	3	3.6	0	7	3	0	2	17	15.8	
SAM HOUSTON STATE	12/18/15	*	35	2-8	.250	1-3	.333	0-2	.000	1	2	3	3.6	3	3	4	0	0	5	14.6	
INCARNATE WORD	12/22/15	*	33	4-11	.364	1-1	1.000	9-10	.900	0	8	8	4.0	1	3	3	0	2	18	14.9	
at Massachusetts	12/29/15	*	35	6-12	.500	2-4	.500	4-5	.800	0	1	1	3.7	1	3	2	1	3	18	15.2	
at Mount St. Mary's	01/02/16	*	34	5-9	.556	2-2	1.000	5-5	1.000	1	3	4	3.8	2	2	2	0	2	17	15.3	
at Central Connecticut	01/04/16	*	36	5-8	.625	1-2	.500	6-6	1.000	0	1	1	3.5	3	6	2	0	3	17	15.5	
ROBERT MORRIS	01/07/16	*	37	3-9	.333	1-5	.200	3-3	1.000	1	3	4	3.6	3	6	3	0	2	10	15.1	
SAINT FRANCIS U.	01/09/16	*	39	5-12	.417	3-5	.600	4-4	1.000	1	2	3	3.5	2	2	0	0	3	17	15.2	
at WAGNER	01/14/16	*	37	3-5	.600	0-2	.000	3-4	.750	0	1	1	3.4	4	5	2	1	1	9	14.8	
at Bryant	01/16/16	*	36	3-9	.333	1-3	.333	4-4	1.000	1	1	2	3.3	1	8	4	0	1	11	14.6	
at Fairleigh Dickinson	01/21/16	*	38	3-6	.500	0-2	.000	6-6	1.000	0	4	4	3.3	4	8	4	0	2	12	14.4	
ST. FRANCIS BROOKLYN	01/23/16	*	35	4-14	.286	1-4	.250	2-2	1.000	4	3	7	3.5	1	4	4	0	2	11	14.3	
SACRED HEART	01/27/16	*	35	7-14	.500	0-1	.000	8-9	.889	0	8	8	3.8	4	7	0	0	5	22	14.7	
FAIRLEIGH DICKINSON	01/30/16	*	38	5-9	.556	3-3	1.000	8-11	.727	0	3	3	3.7	5	7	1	1	2	21	15.0	
MOUNT ST. MARY'S	02/04/16	*	38	5-11	.455	2-4	.500	9-10	.900	1	6	7	3.9	3	3	4	0	0	21	15.2	
at Sacred Heart	02/06/16	*	32	7-14	.500	1-5	.200	10-12	.833	0	4	4	3.9	1	1	2	0	1	25	15.7	
WAGNER	02/11/16	*	36	5-11	.455	1-3	.333	6-6	1.000	3	8	11	4.2	1	5	2	1	1	17	15.7	
Totals			24	864	112-250	.448	30-77	.390	123-140	.879	20	80	100	4.2	55	106	55	7	42	377	15.7

SEASON HIGHS

Pts25 at Sacred Heart (2/6/16)	FTA12 at Sacred Heart (2/6/16)
FG7, 4x, last at Sacred Heart (2/6/16)	Reb11 vs. Wagner (2/11/16)
FGA14, 5x, last at Sacred Heart (2/6/16)	Asst8, 2x, last at Fairleigh Dickinson (1/21/16)
3FG3, 2x, last vs. Fairleigh Dickinson (1/30/16)	Block2 at Dartmouth (11/29/15)
3FGA6 at Loyola (Md.) (11/16/15)	Steal5 vs. Sacred Heart (1/27/16)
FT10 at Sacred Heart (2/6/16)	Min43, 2x, last at Niagara (12/12/15)

CAREER HIGHS

Pts25 at Sacred Heart (2/6/16)	FTA15 at Fairleigh Dickinson (1/24/15)
FG7, 4x, last at Sacred Heart (2/6/16)	Reb11 vs. Wagner (2/11/16)
FGA14, 5x, last at Sacred Heart (2/6/16)	Asst8, 2x, last at Fairleigh Dickinson (1/21/16)
3FG3, 2x, last vs. Fairleigh Dickinson (1/30/16)	Block2 at Dartmouth (11/29/15)
3FGA6 at Loyola (Md.) (11/16/15)	Steal5, 2x, last vs. Sacred Heart (1/27/16)
FT12 at Fairleigh Dickinson (1/24/15)	Min44 vs. Sacred Heart (1/8/15)

Season	gp-gs	min/avg	Total		3-Point		F-Throws		Rebounds				Scoring							
			fg-fga	pct	fg-fga	pct	ft-fa	pct	off	def	tot	avg	pf	fo	ast	to	blk	stl	pts	avg
2014-15	29-29	907/31.3	88-226	.389	22-80	.275	98-114	.860	18	95	113	3.9	81	2	96	70	5	27	296	10.2
2015-16	24-24	864/36.0	112-250	.448	30-77	.390	123-140	.879	20	80	100	4.2	55	1	106	55	7	42	377	15.7
TOTAL	53-53	1771/33.4	200-476	.420	52-157	.331	221-254	.870	38	175	213	4.0	136	3	202	125	12	69	673	12.7



#20 AAKIM SAINTIL

Junior • Guard

6-0 • 165

West Orange, N.J. • Roselle (N.J.) Catholic (South Alabama/Williston State)

Notes: Becomes second player to transfer to LIU Brooklyn after spending freshman season at South Alabama (C.J. Garner)... Quick off the dribble, has shown ability to knock down perimeter shots.

Background: Played one season at Williston State College in North Dakota... Averaged 12.1 points, 5.3 assists and 3.7 rebounds per game for the Tetons, who went 25-5 in 2014-15... Also played one year at South Alabama, playing in 31 games as a freshman including 10 starts... Averaged 6.2 points and 2.0 rebounds in 22.7 minutes per game... Attended prestigious Roselle Catholic High School... Averaged 14.5 points, 5.5 assists and 4.5 rebounds per contest as a senior... Led the Lions to victory at the New Jersey State Interscholastic Athletic Association Tournament of Champions... Roselle Catholic was named Team of the Year by the Newark Star-Ledger... Earned Second Team All-Union County and Third Team All-State, All-Non-Public and All-Senior honors from the Newark Star-Ledger... Received the Play of the Year award from the Star-Ledger for scoring five points in six seconds in win over No. 1 St. Anthony in the Non-Public B championship game... Named First Team All-Union County and Third Team All-State by NJ Hoops... Presented with the 2013 Chakey Memorial Award, given to the Roselle Catholic basketball player who "best exemplifies the qualities that marked the life of Edward Chakey," who taught at the school from 1959 to 1991.

Personal: Son of Eddy and Nancy Saintil... Has two siblings.

Opponent	Date	gs	min	Total		3-Pointers		Free throws		Rebounds				pf	a	t/o	blk	stl	pts	avg	
				fg-fga	pct	3fg-fga	pct	ft-fa	pct	off	def	tot	avg								
at Loyola Maryland	11/16/15		25	5-10	.500	1-3	.333	4-4	1.000	1	2	3	3.0	4	3	1	1	3	15	15.0	
UNIVERSITY OF MAINE	11/19/15		26	4-9	.444	1-4	.250	3-4	.750	1	3	4	3.5	4	4	7	0	4	12	13.5	
N.C. CENTRAL	11/22/15		28	1-7	.143	1-3	.333	12-14	.857	0	2	2	3.0	3	4	1	0	2	15	14.0	
at FIU	11/25/15		26	3-10	.300	1-4	.250	6-6	1.000	0	0	0	2.3	4	9	2	0	2	13	13.8	
at Dartmouth	11/29/15		19	4-6	.667	3-4	.750	0-1	.000	1	0	1	2.0	5	2	2	0	2	11	13.2	
UMASS LOWELL	12/03/15		29	3-7	.429	2-5	.400	5-8	.625	0	3	3	2.2	4	6	4	0	2	13	13.2	
at Fordham	12/08/15	*	37	7-13	.538	1-4	.250	8-9	.889	0	5	5	2.6	4	8	5	0	2	23	14.6	
at Niagara University	12/12/15	*	34	6-15	.400	2-7	.286	7-10	.700	0	4	4	2.8	5	5	2	0	3	21	15.4	
SAM HOUSTON STATE	12/18/15	*	31	4-10	.400	3-8	.375	5-6	.833	0	2	2	2.7	3	3	5	0	2	16	15.4	
INCARNATE WORD	12/22/15	*	18	1-4	.250	1-4	.250	4-4	1.000	0	2	2	2.6	4	3	2	0	1	7	14.6	
at Massachusetts	12/29/15	*	28	2-12	.167	1-7	.143	3-4	.750	1	0	1	2.5	4	6	4	0	0	8	14.0	
at Mount St. Mary's	01/02/16	*	27	1-11	.091	1-3	.333	4-4	1.000	0	0	0	2.3	3	2	2	0	1	7	13.4	
at Central Connecticut	01/04/16	*	33	4-8	.500	1-4	.250	7-10	.700	0	1	1	2.2	0	5	2	0	2	16	13.6	
ROBERT MORRIS	01/07/16	*	32	2-10	.200	1-7	.143	0-0	.000	0	1	1	2.1	2	3	7	0	4	5	13.0	
SAINT FRANCIS U.	01/09/16	*	28	3-12	.250	0-5	.000	1-1	1.000	0	2	2	2.1	4	6	1	0	1	7	12.6	
at WAGNER	01/14/16	*	39	7-15	.467	3-5	.600	10-11	.909	2	1	3	2.1	4	4	2	0	0	27	13.5	
at Bryant	01/16/16	*	30	6-10	.600	2-5	.400	2-2	1.000	0	4	4	2.2	3	4	2	0	1	16	13.6	
at Fairleigh Dickinson	01/21/16	*	35	8-13	.615	2-5	.400	4-6	.667	0	2	2	2.2	2	7	5	0	2	22	14.1	
ST. FRANCIS BROOKLYN	01/23/16	*	37	3-13	.231	1-7	.143	0-0	.000	1	1	2	2.2	4	2	0	0	2	7	13.7	
SACRED HEART	01/27/16	*	22	5-10	.500	0-3	.000	4-4	1.000	0	0	0	2.1	4	4	4	0	0	14	13.8	
FAIRLEIGH DICKINSON	01/30/16	*	35	1-9	.111	0-4	.000	10-12	.833	0	1	1	2.0	3	6	4	0	1	12	13.7	
MOUNT ST. MARY'S	02/04/16	*	31	2-7	.286	0-0	.000	4-6	.667	0	5	5	2.2	3	5	4	0	1	8	13.4	
at Sacred Heart	02/06/16	*	39	7-17	.412	0-4	.000	9-13	.692	2	1	3	2.2	1	11	2	0	1	23	13.8	
WAGNER	02/11/16	*	25	1-3	.333	0-1	.000	6-7	.857	1	3	4	2.3	5	2	1	0	0	8	13.6	
Totals			18	714	90-241	.373	28-106	.264	118-146	.808	10	45	55	2.3	82	114	71	1	39	326	13.6

SEASON/CAREER HIGHS

Pts	27 at Wagner (1/14/16)	FTA	14 vs. N.C. Central (11/22/15)
FG	8 at Fairleigh Dickinson (1/21/16)	Reb	5, 2x, last vs. Mount St. Mary's (2/4/16)
FGA	17 at Sacred Heart (2/6/16)	Asst	11 at Sacred Heart (2/6/16)
3FG	3, 3x, last at Wagner (1/14/16)	Block	1 at Loyola (Md.) (11/16/15)
3FGA	8 vs. Sam Houston State (12/18/15)	Steal	4, 2x, last vs. Robert Morris (1/7/16)
FT	12 vs. N.C. Central (11/22/15)	Min	39, 2x, last at Sacred Heart (2/6/16)

Season	gp-gs	min/avg	Total		3-Point		F-Throws		Rebounds				Scoring							
			fg-fga	pct	fg-fga	pct	ft-fa	pct	off	def	tot	avg	pf	fo	ast	to	blk	stl	pts	avg
2015-16	24-18	714/29.8	90-241	.373	28-106	.264	118-146	.808	10	45	55	2.3	82	3	114	71	1	39	326	13.6
TOTAL	24-18	714/29.8	90-241	.373	28-106	.264	118-146	.808	10	45	55	2.3	82	3	114	71	1	39	326	13.6



#22 RAUL FRIAS

Freshman • Guard

6-1 • 165

Miami, Fla. • Mater Academy

Notes: Athletic guard who can shoot the basketball... Will provide Blackbirds with quality option off the bench in the backcourt.

Background: Played two seasons at Mater Academy... Named captain as a senior... Was named First Team All-Dade County as a senior after averaging 19.1 points, 6.1 rebounds and 2.3 steals per game... Was also named to the Florida Association of Basketball Coaches and SourceHoops Class 6A Boys All-State Third Team... Also played baseball in high school.

Personal: Son of Raul Frias and Ysis Gomez... Father played baseball in the Dominican Republic... Plans to major in sport management.

Opponent	Date	gs	min	Total		3-Pointers		Free throws		Rebounds				pf	a	t/o	blk	stl	pts	avg
				fg-fga	pct	3fg-fga	pct	ft-fa	pct	off	def	tot	avg							
at Loyola Maryland	11/16/15	dnp		-	-	-	-	-	-	-	-	-	-	-	-	-	-	-	-	-
UNIVERSITY OF MAINE	11/19/15	1		0-0	.000	0-0	.000	0-0	.000	0	0	0	0.0	0	0	0	0	0	0	0.0
N.C. CENTRAL	11/22/15	dnp		-	-	-	-	-	-	-	-	-	-	-	-	-	-	-	-	-
at FIU	11/25/15	2		0-0	.000	0-0	.000	0-0	.000	0	1	1	0.5	0	0	0	0	0	0	0.0
at Dartmouth	11/29/15	11		0-1	.000	0-1	.000	0-0	.000	1	2	3	1.3	2	0	1	0	0	0	0.0
UMASS LOWELL	12/03/15	3		1-1	1.000	1-1	1.000	0-0	.000	0	0	0	1.0	1	1	0	0	0	3	0.8
at Fordham	12/08/15	dnp		-	-	-	-	-	-	-	-	-	-	-	-	-	-	-	-	-
at Niagara University	12/12/15	dnp		-	-	-	-	-	-	-	-	-	-	-	-	-	-	-	-	-
SAM HOUSTON STATE	12/18/15	dnp		-	-	-	-	-	-	-	-	-	-	-	-	-	-	-	-	-
INCARNATE WORD	12/22/15	7		0-2	.000	0-1	.000	0-0	.000	0	0	0	0.8	1	0	2	1	0	0	0.6
at Massachusetts	12/29/15	1		0-1	.000	0-1	.000	0-0	.000	0	0	0	0.7	0	0	0	0	0	0	0.5
at Mount St. Mary's	01/02/16	4		1-1	1.000	0-0	.000	0-0	.000	1	0	1	0.7	0	0	0	0	0	2	0.7
at Central Connecticut	01/04/16	dnp		-	-	-	-	-	-	-	-	-	-	-	-	-	-	-	-	-
ROBERT MORRIS	01/07/16	3		0-2	.000	0-1	.000	0-0	.000	1	0	1	0.8	0	0	0	0	0	0	0.6
SAINT FRANCIS U.	01/09/16	5		0-0	.000	0-0	.000	0-0	.000	0	0	0	0.7	0	0	1	0	0	0	0.6
at WAGNER	01/14/16	2		0-1	.000	0-0	.000	0-0	.000	0	0	0	0.6	1	0	0	0	0	0	0.5
at Bryant	01/16/16	18		0-2	.000	0-2	.000	0-0	.000	0	1	1	0.6	0	1	0	0	1	0	0.5
at Fairleigh Dickinson	01/21/16	6		0-0	.000	0-0	.000	0-0	.000	0	0	0	0.6	2	0	1	0	0	0	0.4
ST. FRANCIS BROOKLYN	01/23/16	10		0-3	.000	0-1	.000	0-0	.000	2	2	4	0.8	2	0	0	0	1	0	0.4
SACRED HEART	01/27/16	9		0-1	.000	0-1	.000	0-0	.000	0	0	0	0.8	0	1	1	1	0	0	0.4
FAIRLEIGH DICKINSON	01/30/16	2		0-0	.000	0-0	.000	0-0	.000	0	0	0	0.7	0	0	0	0	1	0	0.3
MOUNT ST. MARY'S	02/04/16	dnp		-	-	-	-	-	-	-	-	-	-	-	-	-	-	-	-	-
at Sacred Heart	02/06/16	1		1-1	1.000	1-1	1.000	0-0	.000	0	0	0	0.7	1	0	0	0	0	3	0.5
WAGNER	02/11/16	dnp		-	-	-	-	-	-	-	-	-	-	-	-	-	-	-	-	-
Totals		0	85	3-16	.188	2-10	.200	0-0	.000	5	6	11	0.7	10	3	6	2	3	8	0.5

SEASON/CAREER HIGHS

Pts.....	3, 2x, last at Sacred Heart (2/6/16)	FTA.....	n/a
FG.....	1, 3x, last at Sacred Heart (2/6/16)	Reb.....	4 vs. St. Francis Brooklyn (1/23/16)
FGA.....	3 vs. St. Francis Brooklyn (1/23/16)	Asst.....	1, 2x, last vs. Sacred Heart (1/27/16)
3FG.....	1, 2x, last at Sacred Heart (2/6/16)	Block.....	1, 2x, last vs. Sacred Heart (1/27/16)
3FGA.....	2 at Bryant (1/16/16)	Steal.....	1, 3x, last vs. Fairleigh Dickinson (1/30/16)
FT.....	n/a	Min.....	18 at Bryant (1/16/16)

Season	gp-gs	min/avg	Total		3-Point		F-Throws		Rebounds				Scoring							
			fg-fga	pct	fg-fga	pct	ft-fa	pct	off	def	tot	avg	pf	fo	ast	to	blk	stl	pts	avg
2015-16	16-0	85/5.3	3-16	.188	2-10	.200	0-0	.000	5	6	11	0.7	10	0	3	6	2	3	8	0.5
TOTAL	16-0	85/5.3	3-16	.188	2-10	.200	0-0	.000	5	6	11	0.7	10	0	3	6	2	3	8	0.5



#23 GLENN FEIDANGA

Junior • Forward/Center

6-8 • 240

Bangui, Central African Republic • The Rock School (Fla.)

Notes: Another player who had a busy summer, as he played in FIBA's AfroBasket Tournament for his native Central African Republic... Solid frontcourt player who is one of the best positional defenders on the team.

2014-15: Missed the early portion of the season due to injury but returned to play in 17 contests off the bench... Was a consistent contributor, averaging 4.1 points and 3.6 rebounds in 14.4 minutes per game... Shot 40.0 percent from the field and 76.5 percent from the free-throw line... Grabbed 62 rebounds, 32 of which were offensive... Scored season-high nine points and pulled down 10 rebounds (six offensive) in home win over Robert Morris... Had back-to-back games with eight points against Wagner and St. Francis Brooklyn in February.

2013-14: Played in all 29 games for the Blackbirds, starting the final six at a forward spot... Averaged 16.3 minutes, scoring 4.1 points and pulling down 3.8 rebounds per game... Named Northeast Conference Rookie of the Week after scoring 15 points and grabbing 11 rebounds in home win against Mount St. Mary's... Also had double-digit rebounds (10) in road loss to Bryant two days prior... Scored double figures for first time in his career with 10 points at Lehigh... Had nine points and seven rebounds in Battle of Brooklyn victory over St. Francis Brooklyn at Barclays Center.

Background: Four-year letterwinner at The Rock School in Florida... Averaged 11.9 points and 5.6 rebounds per game for the Sunshine Independent Athletic Association state champions... Helped lead Lions to a 33-4 record as a senior... Named Gainesville Sun Second Team All-Area... Scored team-high 23 points in Alchua-Ocala All-Star Game... Played AAU basketball for the Westchester Hawks.

Personal: Native of Central African Republic... Majoring in sports science.

Opponent	Date	gs	min	Total		3-Pointers		Free throws		Rebounds				pf	a	t/o	blk	stl	pts	avg
				fg-fga	pct	3fg-fga	pct	ft-fa	pct	off	def	tot	avg							
at Loyola Maryland	11/16/15	15	15	0-1	.000	0-0	.000	0-0	.000	0	2	2	2.0	2	1	0	0	0	0	0.0
UNIVERSITY OF MAINE	11/19/15	11	11	0-0	.000	0-0	.000	1-3	.333	0	1	1	1.5	2	0	0	0	0	1	0.5
N.C. CENTRAL	11/22/15	8	8	0-2	.000	0-0	.000	2-2	1.000	2	1	3	2.0	2	0	0	0	0	2	1.0
at FIU	11/25/15	9	9	2-4	.500	0-0	.000	0-2	.000	0	2	2	2.0	1	0	0	0	0	4	1.8
at Dartmouth	11/29/15	6	6	2-3	.667	0-0	.000	0-0	.000	1	0	1	1.8	1	0	0	0	0	4	2.2
UMASS LOWELL	12/03/15	6	6	0-0	.000	0-0	.000	0-0	.000	1	1	2	1.8	2	0	0	0	0	0	1.8
at Fordham	12/08/15	dnp	-	-	-	-	-	-	-	-	-	-	-	-	-	-	-	-	-	-
at Niagara University	12/12/15	dnp	-	-	-	-	-	-	-	-	-	-	-	-	-	-	-	-	-	-
SAM HOUSTON STATE	12/18/15	1	1	0-0	.000	0-0	.000	0-0	.000	0	0	0	1.6	1	0	0	0	0	0	1.6
INCARNATE WORD	12/22/15	4	4	1-1	1.000	0-0	.000	0-0	.000	0	0	0	1.4	2	0	0	0	0	2	1.6
at Massachusetts	12/29/15	5	5	2-3	.667	0-0	.000	0-0	.000	0	0	0	1.2	0	0	0	0	0	4	1.9
at Mount St. Mary's	01/02/16	11	11	0-1	.000	0-0	.000	1-2	.500	3	3	6	1.7	4	0	1	0	0	1	1.8
at Central Connecticut	01/04/16	6	6	0-1	.000	0-0	.000	0-0	.000	1	0	1	1.6	2	0	0	0	0	0	1.6
ROBERT MORRIS	01/07/16	5	5	1-1	1.000	0-0	.000	0-0	.000	0	1	1	1.6	0	0	0	0	0	2	1.7
SAINT FRANCIS U.	01/09/16	5	5	0-0	.000	0-0	.000	0-0	.000	0	0	0	1.5	3	0	2	0	0	0	1.5
at WAGNER	01/14/16	17	17	0-1	.000	0-0	.000	0-2	.000	1	1	2	1.5	5	1	1	1	1	0	1.4
at Bryant	01/16/16	9	9	1-1	1.000	0-0	.000	0-0	.000	0	1	1	1.5	2	0	2	0	0	2	1.5
at Fairleigh Dickinson	01/21/16	12	12	0-0	.000	0-0	.000	0-0	.000	0	0	0	1.4	2	0	0	0	0	0	1.4
ST. FRANCIS BROOKLYN	01/23/16	11	11	0-1	.000	0-1	.000	2-2	1.000	1	1	2	1.4	2	0	1	0	0	2	1.4
SACRED HEART	01/27/16	10	10	1-2	.500	0-0	.000	3-6	.500	3	1	4	1.6	4	0	0	0	0	5	1.6
FAIRLEIGH DICKINSON	01/30/16	12	12	1-1	1.000	0-0	.000	2-2	1.000	1	4	5	1.7	4	0	1	0	0	4	1.7
MOUNT ST. MARY'S	02/04/16	6	6	1-2	.500	0-0	.000	1-2	.500	1	3	4	1.9	3	0	0	0	0	3	1.8
at Sacred Heart	02/06/16	14	14	2-4	.500	0-0	.000	0-0	.000	0	1	1	1.8	4	0	1	0	0	4	1.9
WAGNER	02/11/16	12	12	0-3	.000	0-0	.000	2-2	1.000	0	1	1	1.8	1	0	2	0	0	2	1.9
Totals		0	195	14-32	.438	0-1	.000	14-25	.560	15	24	39	1.8	49	2	11	1	1	42	1.9

SEASON HIGHS

Pts.....	5 vs. Sacred Heart (1/27/16)	FTA.....	6 vs. Sacred Heart (1/27/16)
FG.....	2, 4x, last at Sacred Heart (2/6/16)	Reb.....	6 at Mount St. Mary's (1/25/16)
FGA.....	4, 2x, last at Sacred Heart (2/6/16)	Asst.....	1, 2x, last at Wagner (1/14/16)
3FG.....	n/a	Block.....	1 at Wagner (1/14/16)
3FGA.....	1 vs. St. Francis Brooklyn (1/23/16)	Steal.....	1 at Wagner (1/14/16)
FT.....	3 vs. Sacred Heart (1/27/16)	Min.....	17 at Wagner (1/14/16)

CAREER HIGHS

Pts.....	15 vs. Mount St. Mary's (1/25/14)	FTA.....	8 at Fairleigh Dickinson (1/24/15)
FG.....	7 vs. Mount St. Mary's (1/25/14)	Reb.....	11 vs. Mount St. Mary's (1/25/14)
FGA.....	10 vs. Robert Morris (2/5/15)	Asst.....	1, 11x, last at Wagner (1/14/16)
3FG.....	n/a	Block.....	1, 9x, last at Wagner (1/14/16)
3FGA.....	1, 2x, last vs. St. Francis Brooklyn (1/23/16)	Steal.....	1, 9x, last at Wagner (1/14/16)
FT.....	5, 2x, last at Fairleigh Dickinson (1/24/15)	Min.....	25 at UC Irvine (11/22/13)

Season	gp-gs	min/avg	Total		3-Point		F-Throws		Rebounds				Scoring							
			fg-fga	pct	fg-fga	pct	ft-fa	pct	off	def	tot	avg	pf	fo	ast	to	blk	stl	pts	avg
2013-14	29-6	473/16.3	41-94	.436	0-0	.000	36-54	.667	47	62	109	3.8	88	6	7	15	5	5	118	4.1
2014-15	16-0	227/14.2	20-51	.392	0-1	.000	24-32	.750	31	28	59	3.7	41	1	2	5	3	2	64	4.0
2015-16	22-0	195/8.9	14-32	.438	0-1	.000	14-25	.560	15	24	39	1.8	49	1	2	11	1	1	42	1.9
TOTAL	67-6	895/13.4	75-177	.424	0-2	.000	74-111	.667	93	114	207	3.1	178	8	11	31	9	8	224	3.3



#24 RAIQUAN CLARK

Freshman • Guard

6-4 • 170

New Haven, Conn. • Hillhouse

Notes: Athletic preferred walk-on who has shown ability to create havoc in the passing lanes and on the offensive glass in practice.

Background: Played for seasons at James Hillhouse High School before spending a post-graduate year at Trinity-Pawling in New York... Was a captain as a senior at Hillhouse... Helped Academics to 2013 LL State Championship, scoring 26 points and pulling down 12 rebounds in victory over Fairfield Prep... Was named to 53rd Annual JCC Schoolboy Classic roster... Averaged 15.2 points, 7.5 rebounds, 3.0 assists and 3.0 steals per game as a senior... Also helped Hillhouse win a Southern Connecticut Conference (SCC) Hammonasset Division championship... Two-time New Haven Register All-Area selection... All-SCC Hammonasset Division selection.

Opponent	Date	gs	min	Total		3-Pointers		Free throws		Rebounds				pf	a	t/o	blk	stl	pts	avg
				fg-fga	pct	3fg-fga	pct	ft-fta	pct	off	def	tot	avg							
at Loyola Maryland	11/16/15	dnp		-	-	-	-	-	-	-	-	-	-	-	-	-	-	-	-	-
UNIVERSITY OF MAINE	11/19/15	dnp		-	-	-	-	-	-	-	-	-	-	-	-	-	-	-	-	-
N.C. CENTRAL	11/22/15	dnp		-	-	-	-	-	-	-	-	-	-	-	-	-	-	-	-	-
at FIU	11/25/15	dnp		-	-	-	-	-	-	-	-	-	-	-	-	-	-	-	-	-
at Dartmouth	11/29/15	2		0-0	.000	0-0	.000	0-0	.000	0	0	0	0.0	0	1	0	0	0	0	0.0
UMASS LOWELL	12/03/15	dnp		-	-	-	-	-	-	-	-	-	-	-	-	-	-	-	-	-
at Fordham	12/08/15	dnp		-	-	-	-	-	-	-	-	-	-	-	-	-	-	-	-	-
at Niagara University	12/12/15	dnp		-	-	-	-	-	-	-	-	-	-	-	-	-	-	-	-	-
SAM HOUSTON STATE	12/18/15	dnp		-	-	-	-	-	-	-	-	-	-	-	-	-	-	-	-	-
INCARNATE WORD	12/22/15	dnp		-	-	-	-	-	-	-	-	-	-	-	-	-	-	-	-	-
at Massachusetts	12/29/15	dnp		-	-	-	-	-	-	-	-	-	-	-	-	-	-	-	-	-
at Mount St. Mary's	01/02/16	dnp		-	-	-	-	-	-	-	-	-	-	-	-	-	-	-	-	-
at Central Connecticut	01/04/16	dnp		-	-	-	-	-	-	-	-	-	-	-	-	-	-	-	-	-
ROBERT MORRIS	01/07/16	dnp		-	-	-	-	-	-	-	-	-	-	-	-	-	-	-	-	-
SAINT FRANCIS U.	01/09/16	dnp		-	-	-	-	-	-	-	-	-	-	-	-	-	-	-	-	-
at WAGNER	01/14/16	dnp		-	-	-	-	-	-	-	-	-	-	-	-	-	-	-	-	-
at Bryant	01/16/16	dnp		-	-	-	-	-	-	-	-	-	-	-	-	-	-	-	-	-
at Fairleigh Dickinson	01/21/16	dnp		-	-	-	-	-	-	-	-	-	-	-	-	-	-	-	-	-
ST. FRANCIS BROOKLYN	01/23/16	dnp		-	-	-	-	-	-	-	-	-	-	-	-	-	-	-	-	-
SACRED HEART	01/27/16	dnp		-	-	-	-	-	-	-	-	-	-	-	-	-	-	-	-	-
FAIRLEIGH DICKINSON	01/30/16	dnp		-	-	-	-	-	-	-	-	-	-	-	-	-	-	-	-	-
MOUNT ST. MARY'S	02/04/16	dnp		-	-	-	-	-	-	-	-	-	-	-	-	-	-	-	-	-
at Sacred Heart	02/06/16	dnp		-	-	-	-	-	-	-	-	-	-	-	-	-	-	-	-	-
WAGNER	02/11/16	dnp		-	-	-	-	-	-	-	-	-	-	-	-	-	-	-	-	-
Totals		0	2	0-0	.000	0-0	.000	0-0	.000	0	0	0	0.0	0	1	0	0	0	0	0.0

SEASON/CAREER HIGHS

Pts.....	n/a	FTA.....	n/a
FG.....	n/a	Reb.....	n/a
FGA.....	n/a	Asst.....	1 at Dartmouth (11/29/15)
3FG.....	n/a	Block.....	n/a
3FGA.....	n/a	Steal.....	n/a
FT.....	n/a	Min.....	2 at Dartmouth (11/29/15)

Season	gp-gs	min/avg	Total		3-Point		F-Throws		Rebounds				Scoring							
			fg-fga	pct	fg-fga	pct	ft-fta	pct	off	def	tot	avg	pf	fo	ast	to	blk	stl	pts	avg
2015-16	1-0	2/2.0	0-0	.000	0-0	.000	0-0	.000	0	0	0	0.0	0	0	1	0	0	0	0	0.0
TOTAL	1-0	2/2.0	0-0	.000	0-0	.000	0-0	.000	0	0	0	0.0	0	0	1	0	0	0	0	0.0



#33 JEROME FRINK

R-Junior • Forward

6-7 • 230

Jersey City, N.J. • St. Anthony (Florida International)

Notes: Versatile player who will fill a big role for the Blackbirds in 2015-16... Can shoot the ball from the perimeter and also score on the block... Can also provide playmaking ability at the forward position.

2014-15: Did not play due to NCAA transfer rules.

Background: Played two seasons at Florida International... Played in 63 games and started 56 for the Panthers... Averaged 30.0 minutes per game through two years, scoring 587 points and grabbing 336 rebounds while shooting .462 from the floor... Started all 31 games as a sophomore, averaging 8.4 points and 4.4 rebounds... Shot .459 from the field and ranked third on the team with 25 blocked shots... Scored season-high 18 points against Middle Tennessee... Had string of five straight games in which he scored in double figures... Averaged 10.2 points and 6.3 rebounds per game as a freshman... Ranked 10th in the Sun Belt in rebounding... Led team with 81 offensive rebounds... Recorded three 20-point games, including career high 22 points against Boston College... Had four double-doubles... Played high school basketball at storied St. Anthony (N.J.) High School for Hall of Fame coach Bob Hurley... Helped Friars to 65-0 record and

back-to-back NJSIAA Tournament of Champion titles as a junior and senior... Rated as No. 5 player in the state of New Jersey as a senior.

Personal: Son of Jerome and Ingrid Frink... Has two siblings, Alanzo and Nagia... Plans to major in business.

Opponent	Date	gs	min	Total		3-Pointers		Free throws		Rebounds				Other				pts	avg		
				fg-fga	pct	3fg-fga	pct	ft-fa	pct	off	def	tot	avg	pf	a	t/o	blk			stl	
at Loyola Maryland	11/16/15	*	23	4-12	.333	0-2	.000	0-0	.000	3	4	7	7.0	4	1	1	3	0	8	8.0	
UNIVERSITY OF MAINE	11/19/15	*	28	9-11	.818	1-2	.500	6-11	.545	3	6	9	8.0	2	0	3	0	1	25	16.5	
N.C. CENTRAL	11/22/15	*	35	8-15	.533	1-2	.500	1-2	.500	2	5	7	7.7	2	2	3	4	1	18	17.0	
at FIU	11/25/15	*	32	7-16	.438	0-5	.000	6-7	.857	10	5	15	9.5	3	2	4	0	1	20	17.8	
at Dartmouth	11/29/15	*	23	3-6	.500	0-1	.000	0-0	.000	3	2	5	8.6	4	0	7	2	0	6	15.4	
UMASS LOWELL	12/03/15	*	29	5-9	.556	2-2	1.000	4-6	.667	1	7	8	8.5	4	1	2	2	3	16	15.5	
at Fordham	12/08/15	*	41	12-18	.667	3-6	.500	3-4	.750	2	7	9	8.6	4	1	5	1	1	30	17.6	
at Niagara University	12/12/15	*	40	4-12	.333	2-4	.500	2-2	1.000	4	7	11	8.9	3	1	2	0	3	12	16.9	
SAM HOUSTON STATE	12/18/15	*	33	5-10	.500	0-1	.000	4-6	.667	4	4	8	8.8	5	0	2	1	0	14	16.6	
INCARNATE WORD	12/22/15	*	30	6-9	.667	1-2	.500	1-4	.250	3	5	8	8.7	4	1	2	2	4	14	16.3	
at Massachusetts	12/29/15	*	34	8-14	.571	1-3	.333	4-6	.667	4	9	13	9.1	3	1	2	2	1	21	16.7	
at Mount St. Mary's	01/02/16	*	35	7-10	.700	0-2	.000	2-4	.500	2	8	10	9.2	2	3	4	4	1	16	16.7	
at Central Connecticut	01/04/16	*	32	9-16	.563	1-3	.333	0-0	.000	1	2	3	8.7	2	1	1	3	3	19	16.8	
ROBERT MORRIS	01/07/16	*	34	9-17	.529	0-1	.000	2-3	.667	4	11	15	9.1	2	2	0	0	1	20	17.1	
SAINT FRANCIS U.	01/09/16	*	37	6-10	.600	2-3	.667	4-4	1.000	1	6	7	9.0	4	1	2	0	1	18	17.1	
at WAGNER	01/14/16	*	40	6-15	.400	1-3	.333	4-5	.800	0	7	7	8.9	3	0	3	0	2	17	17.1	
at Bryant	01/16/16	*	31	4-9	.444	1-3	.333	3-4	.750	2	5	7	8.8	1	3	4	3	3	12	16.8	
at Fairleigh Dickinson	01/21/16	*	31	7-17	.412	0-2	.000	3-5	.600	4	3	7	8.7	4	1	5	0	0	17	16.8	
ST. FRANCIS BROOKLYN	01/23/16	*	36	4-18	.222	3-7	.429	5-8	.625	3	4	7	8.6	3	0	3	0	0	16	16.8	
SACRED HEART	01/27/16	*	35	10-14	.714	3-5	.600	1-2	.500	5	9	14	8.9	2	1	1	4	1	24	17.2	
FAIRLEIGH DICKINSON	01/30/16	*	30	5-13	.385	2-2	1.000	0-0	.000	2	8	10	8.9	2	2	5	0	4	12	16.9	
MOUNT ST. MARY'S	02/04/16	*	37	7-14	.500	0-3	.000	5-7	.714	5	4	9	8.9	4	1	2	2	1	19	17.0	
at Sacred Heart	02/06/16	*	32	5-13	.385	1-5	.200	4-6	.667	4	4	8	8.9	5	1	3	0	1	15	16.9	
WAGNER	02/11/16	*	37	10-17	.588	1-3	.333	5-10	.500	5	9	14	9.1	3	3	3	3	3	26	17.3	
Totals			24	795	160-315	.508	26-72	.361	69-106	.651	77	141	218	9.1	75	29	69	36	36	415	17.3

SEASON HIGHS

Pts.....30 at Fordham (12/8/15)	FTA.....11 vs. Maine (11/19/15)
FG.....12 at Fordham (12/8/15)	Reb.....15, 2x, last vs. Robert Morris (1/7/16)
FGA.....18, 2x, last vs. St. Francis Brooklyn (1/23/16)	Asst.....3, 3x, last vs. Wagner (2/11/16)
3FG.....3, 2x, last vs. Sacred Heart (1/27/16)	Block.....4, 3x, last vs. Sacred Heart (1/27/16)
3FGA.....7 vs. St. Francis Brooklyn (1/23/16)	Steal.....4, 2x, last vs. Fairleigh Dickinson (1/30/16)
FT.....6, 2x, last at FIU (11/25/15)	Min.....41 at Fordham (12/8/15)

CAREER HIGHS

Pts.....30 at Fordham (12/8/15)	FTA.....14 vs. Louisiana (1/5/13)*
FG.....12 at Fordham (12/8/15)	Reb.....15, 2x, last vs. Robert Morris (1/7/16)
FGA.....18, 2x, last vs. St. Francis Brooklyn (1/23/16)	Asst.....6 vs. Warren Wilson (11/12/13)*
3FG.....3, 2x, last vs. Sacred Heart (1/27/16)	Block.....4, 3x, last vs. Sacred Heart (1/27/16)
3FGA.....7 vs. St. Francis Brooklyn (1/23/16)	Steal.....6 vs. Stephen F. Austin (11/17/12)*
FT.....9 at Boston College (11/11/12)*	Min.....41 at Fordham (12/8/15)

* Denotes accumulated while at Florida International

Season	gp-gs	min/avg	Total		3-Point		F-Throws		Rebounds				Scoring							
			fg-fga	pct	fg-fga	pct	ft-fa	pct	off	def	tot	avg	pf	fo	ast	to	blk	stl	pts	avg
2015-16	24-24	795/33.1	160-315	.508	26-72	.361	69-106	.651	77	141	218	9.1	75	2	29	69	36	36	415	17.3
TOTAL	24-24	795/33.1	160-315	.508	26-72	.361	69-106	.651	77	141	218	9.1	75	2	29	69	36	36	415	17.3



#44 GANLANDOU CISSE

Freshman • Forward/Center

6-9 • 215

Dakar, Senegal • Roselle (N.J.) Catholic

Notes: Tall, long and lanky big man with big upside potential... Has unique ability to block shots with great timing... Improving offensive game.

Background: Played two seasons of high school basketball at New Jersey power Roselle Catholic... Also played at The Phelps School in Pennsylvania as a sophomore... Helped the Lions to a New Jersey State Tournament of Champions title in 2015, pulling down six rebounds and blocking a pair of shots in the championship game against Pope John... As a junior, averaged over a blocked shot per game... High school teammates with Kentucky's Isaiah Briscoe and South Carolina's Chris Silva.

Personal: Son of Mamadou Cisse and Ndeye Fatousow... Has two siblings... Plans to major in sport management.

Opponent	Date	gs	min	Total		3-Pointers		Free throws		Rebounds				pf	a	t/o	blk	stl	pts	avg
				fg-fga	pct	3fg-fga	pct	ft-fta	pct	off	def	tot	avg							
at Loyola Maryland	11/16/15	dnp		-	-	-	-	-	-	-	-	-	-	-	-	-	-	-	-	-
UNIVERSITY OF MAINE	11/19/15	1		0-0	.000	0-0	.000	0-0	.000	0	0	0	0.0	1	0	0	0	0	0	0.0
N.C. CENTRAL	11/22/15	dnp		-	-	-	-	-	-	-	-	-	-	-	-	-	-	-	-	-
at FIU	11/25/15	dnp		-	-	-	-	-	-	-	-	-	-	-	-	-	-	-	-	-
at Dartmouth	11/29/15	2		1-1	1.000	0-0	.000	0-0	.000	0	0	0	0.0	0	0	0	0	0	2	1.0
UMASS LOWELL	12/03/15	dnp		-	-	-	-	-	-	-	-	-	-	-	-	-	-	-	-	-
at Fordham	12/08/15	dnp		-	-	-	-	-	-	-	-	-	-	-	-	-	-	-	-	-
at Niagara University	12/12/15	dnp		-	-	-	-	-	-	-	-	-	-	-	-	-	-	-	-	-
SAM HOUSTON STATE	12/18/15	3		1-1	1.000	0-0	.000	0-0	.000	0	1	1	0.3	0	0	0	0	0	2	1.3
INCARNATE WORD	12/22/15	3		0-0	.000	0-0	.000	0-0	.000	0	0	0	0.3	0	0	0	0	0	0	1.0
at Massachusetts	12/29/15	dnp		-	-	-	-	-	-	-	-	-	-	-	-	-	-	-	-	-
at Mount St. Mary's	01/02/16	2		0-0	.000	0-0	.000	0-0	.000	0	0	0	0.2	0	0	0	0	0	0	0.8
at Central Connecticut	01/04/16	dnp		-	-	-	-	-	-	-	-	-	-	-	-	-	-	-	-	-
ROBERT MORRIS	01/07/16	dnp		-	-	-	-	-	-	-	-	-	-	-	-	-	-	-	-	-
SAINT FRANCIS U.	01/09/16	1		0-0	.000	0-0	.000	0-0	.000	0	0	0	0.2	1	0	0	0	0	0	0.7
at WAGNER	01/14/16	0		0-0	.000	0-0	.000	0-0	.000	0	0	0	0.1	0	0	0	0	0	0	0.6
at Bryant	01/16/16	dnp		-	-	-	-	-	-	-	-	-	-	-	-	-	-	-	-	-
at Fairleigh Dickinson	01/21/16	dnp		-	-	-	-	-	-	-	-	-	-	-	-	-	-	-	-	-
ST. FRANCIS BROOKLYN	01/23/16	dnp		-	-	-	-	-	-	-	-	-	-	-	-	-	-	-	-	-
SACRED HEART	01/27/16	dnp		-	-	-	-	-	-	-	-	-	-	-	-	-	-	-	-	-
FAIRLEIGH DICKINSON	01/30/16	dnp		-	-	-	-	-	-	-	-	-	-	-	-	-	-	-	-	-
MOUNT ST. MARY'S	02/04/16	dnp		-	-	-	-	-	-	-	-	-	-	-	-	-	-	-	-	-
at Sacred Heart	02/06/16	dnp		-	-	-	-	-	-	-	-	-	-	-	-	-	-	-	-	-
WAGNER	02/11/16	dnp		-	-	-	-	-	-	-	-	-	-	-	-	-	-	-	-	-
Totals		0	12	2-2	1.000	0-0	.000	0-0	.000	0	1	1	0.1	2	0	0	0	0	4	0.6

SEASON/CAREER HIGHS

Pts.....	2, 2x, last vs. Sam Houston State (12/18/15)	FTA.....	n/a
FG.....	1, 2x, last vs. Sam Houston State (12/18/15)	Reb.....	1 vs. Sam Houston State (12/18/15)
FGA.....	1, 2x, last vs. Sam Houston State (12/18/15)	Asst.....	n/a
3FG.....	n/a	Block.....	n/a
3FGA.....	n/a	Steal.....	n/a
FT.....	n/a	Min.....	3, 2x, last vs. Incarnate Word (12/22/15)

Season	gp-gs	min/avg	Total		3-Point		F-Throws		Rebounds				Scoring							
			fg-fga	pct	fg-fga	pct	ft-fta	pct	off	def	tot	avg	pf	fo	ast	to	blk	stl	pts	avg
2015-16	7-0	12/1.7	2-2	1.000	0-0	.000	0-0	.000	0	1	1	0.1	2	0	0	0	0	0	4	0.6
TOTAL	7-0	12/1.7	2-2	1.000	0-0	.000	0-0	.000	0	1	1	0.1	2	0	0	0	0	0	4	0.6



#53 JULIUS VAN SAUERS

Freshman • Forward/Guard

6-8 • 210

Amsterdam, Netherlands • Apollo Amsterdam

Notes: Unique talent who can do a little bit of everything... Can shoot, put the ball on the floor, rebound and has the passing ability of a guard.

Background: Attended high school at Amsterdam's Lyceum... Played for Netherlands U18 and U20 National Teams... Averaged 11.1 points per game in 2015 European U20 Championships in Hungary... Scored 19 points in first contest of the competition against Finland... Also had five rebounds and four assists... Scored 15 points in back-to-back games against Macedonia and Belarus... Helped youth teams win U12 and U14 national championships.

Personal: Son of Eric van Sauers and Monique Mynals... Has two siblings, Cassidy and Maddox... Plans to major in marketing.

Opponent	Date	gs	min	Total		3-Pointers		Free throws		Rebounds				pf	a	t/o	blk	stl	pts	avg	
				fg-fga	pct	3fg-fga	pct	ft-fa	pct	off	def	tot	avg								
at Loyola Maryland	11/16/15		17	2-4	.500	2-3	.667	0-0	.000	1	1	2	2.0	0	1	3	0	0	6	6.0	
UNIVERSITY OF MAINE	11/19/15		19	0-3	.000	0-1	.000	4-4	1.000	2	2	4	3.0	1	1	1	1	1	4	5.0	
N.C. CENTRAL	11/22/15		10	1-4	.250	0-3	.000	0-0	.000	0	2	2	2.7	0	0	0	0	0	2	4.0	
at FIU	11/25/15		2	0-0	.000	0-0	.000	0-0	.000	0	0	0	2.0	0	0	1	0	0	0	3.0	
at Dartmouth	11/29/15		7	0-1	.000	0-1	.000	0-0	.000	0	0	0	1.6	1	0	0	0	0	0	2.4	
UMASS LOWELL	12/03/15		dnp	-	-	-	-	-	-	-	-	-	-	-	-	-	-	-	-	-	
at Fordham	12/08/15		dnp	-	-	-	-	-	-	-	-	-	-	-	-	-	-	-	-	-	
at Niagara University	12/12/15		dnp	-	-	-	-	-	-	-	-	-	-	-	-	-	-	-	-	-	
SAM HOUSTON STATE	12/18/15		dnp	-	-	-	-	-	-	-	-	-	-	-	-	-	-	-	-	-	
INCARNATE WORD	12/22/15		dnp	-	-	-	-	-	-	-	-	-	-	-	-	-	-	-	-	-	
at Massachusetts	12/29/15		dnp	-	-	-	-	-	-	-	-	-	-	-	-	-	-	-	-	-	
at Mount St. Mary's	01/02/16		dnp	-	-	-	-	-	-	-	-	-	-	-	-	-	-	-	-	-	
at Central Connecticut	01/04/16		dnp	-	-	-	-	-	-	-	-	-	-	-	-	-	-	-	-	-	
ROBERT MORRIS	01/07/16		dnp	-	-	-	-	-	-	-	-	-	-	-	-	-	-	-	-	-	
SAINT FRANCIS U.	01/09/16		dnp	-	-	-	-	-	-	-	-	-	-	-	-	-	-	-	-	-	
at WAGNER	01/14/16		dnp	-	-	-	-	-	-	-	-	-	-	-	-	-	-	-	-	-	
at Bryant	01/16/16		dnp	-	-	-	-	-	-	-	-	-	-	-	-	-	-	-	-	-	
at Fairleigh Dickinson	01/21/16		dnp	-	-	-	-	-	-	-	-	-	-	-	-	-	-	-	-	-	
ST. FRANCIS BROOKLYN	01/23/16		dnp	-	-	-	-	-	-	-	-	-	-	-	-	-	-	-	-	-	
SACRED HEART	01/27/16		dnp	-	-	-	-	-	-	-	-	-	-	-	-	-	-	-	-	-	
FAIRLEIGH DICKINSON	01/30/16		dnp	-	-	-	-	-	-	-	-	-	-	-	-	-	-	-	-	-	
MOUNT ST. MARY'S	02/04/16		dnp	-	-	-	-	-	-	-	-	-	-	-	-	-	-	-	-	-	
at Sacred Heart	02/06/16		dnp	-	-	-	-	-	-	-	-	-	-	-	-	-	-	-	-	-	
WAGNER	02/11/16		dnp	-	-	-	-	-	-	-	-	-	-	-	-	-	-	-	-	-	
Totals			0	55	3-12	.250	2-8	.250	4-4	1.000	3	5	8	1.6	2	2	5	1	1	12	2.4

SEASON/CAREER HIGHS

Pts	6 at Loyola (Md.) (11/16/15)	FTA	4 vs. Maine (11/19/15)
FG	2 at Loyola (Md.) (11/16/15)	Reb	4 vs. Maine (11/19/15)
FGA	4, 2x, last vs. N.C. Central (11/22/15)	Asst	1, 2x, last vs. Maine (11/19/15)
3FG	2 at Loyola (Md.) (11/16/15)	Block	1 vs. Maine (11/19/15)
3FGA	3, 2x, last vs. N.C. Central (11/22/15)	Steal	1 vs. Maine (11/19/15)
FT	4 vs. Maine (11/19/15)	Min	19 vs. Maine (11/19/15)

Season	gp-gs	min/avg	Total		3-Point		F-Throws		Rebounds				Scoring							
			fg-fga	pct	fg-fga	pct	ft-fa	pct	off	def	tot	avg	pf	fo	ast	to	blk	stl	pts	avg
2015-16	5-0	55/11.0	3-12	.250	2-8	.250	4-4	1.000	3	5	8	1.6	2	0	2	5	1	1	12	2.4
TOTAL	5-0	55/11.0	3-12	.250	2-8	.250	4-4	1.000	3	5	8	1.6	2	0	2	5	1	1	12	2.4